

**LEGEND**

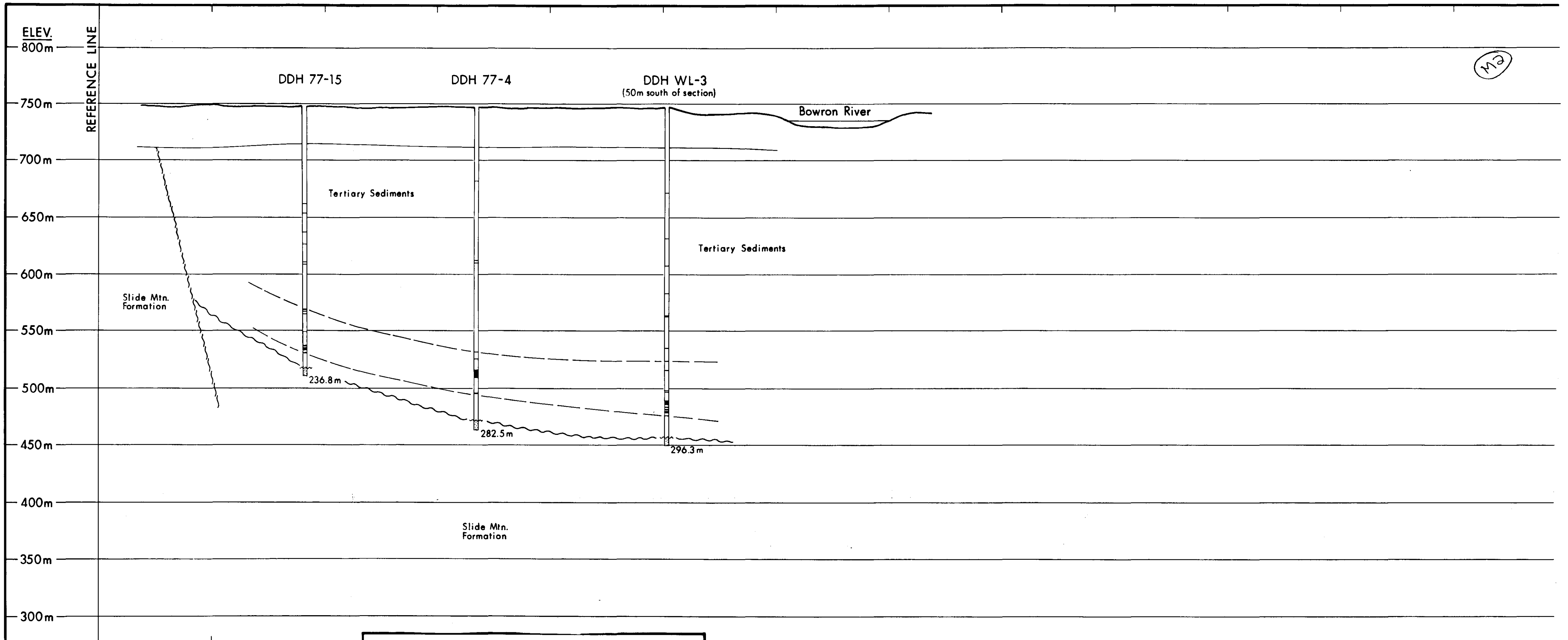
- ⊙ 1971 AND EARLIER DRILLING
- ⊕ 1977 DRILLING
- ⊗ 1980 DRILLING
- ⊖ 1981 DRILLING
- OLD ADITS
- - - TRACTOR ROAD
- C.L. 162 COAL LICENCE NUMBER

0 0.5 1 km

**NORCO RESOURCES LTD. BOWRON COALFIELD**

**DRILLHOLE LOCATIONS 19**  
CENTRAL LICENCE AREA

Consulting Firm: IGNA Engineering & Consulting Ltd.  
 Drawn by: P. Hall  
 N.T.S. Grid: 93H/13(W) FIG. No. 14  
 Scale: 1:10,000  
 Date: 23 June 1981



12

**LEGEND**

**ELEV.**  
250m  
200m  
150m  
100m  
50m  
0

**NORCO RESOURCES LTD.**

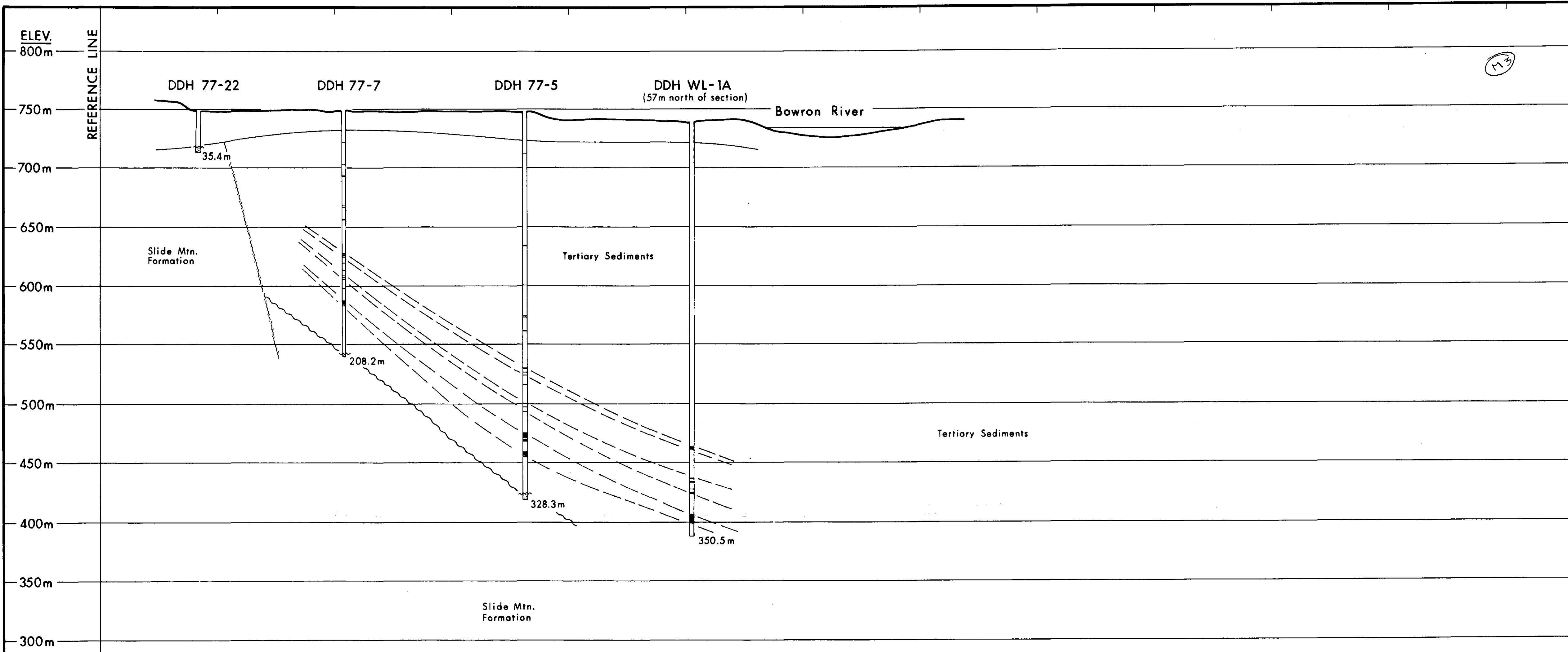
**BOWRON RIVER COAL DEPOSIT**  
PRINCE GEORGE, B.C.

**DIAMOND DRILL SECTION**  
L33 + 00N **19**

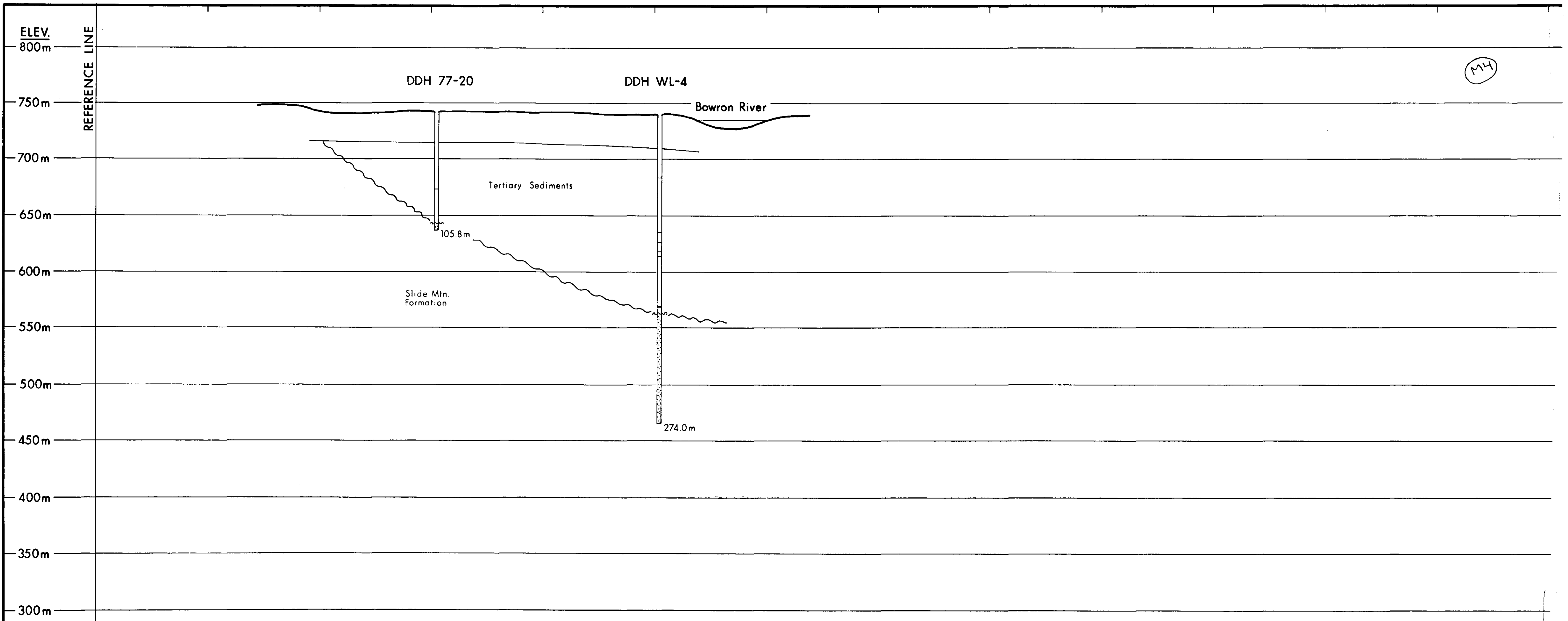
*BW-Bowron River SD(2)A*

**IGNA Engineering & Consulting Ltd.**

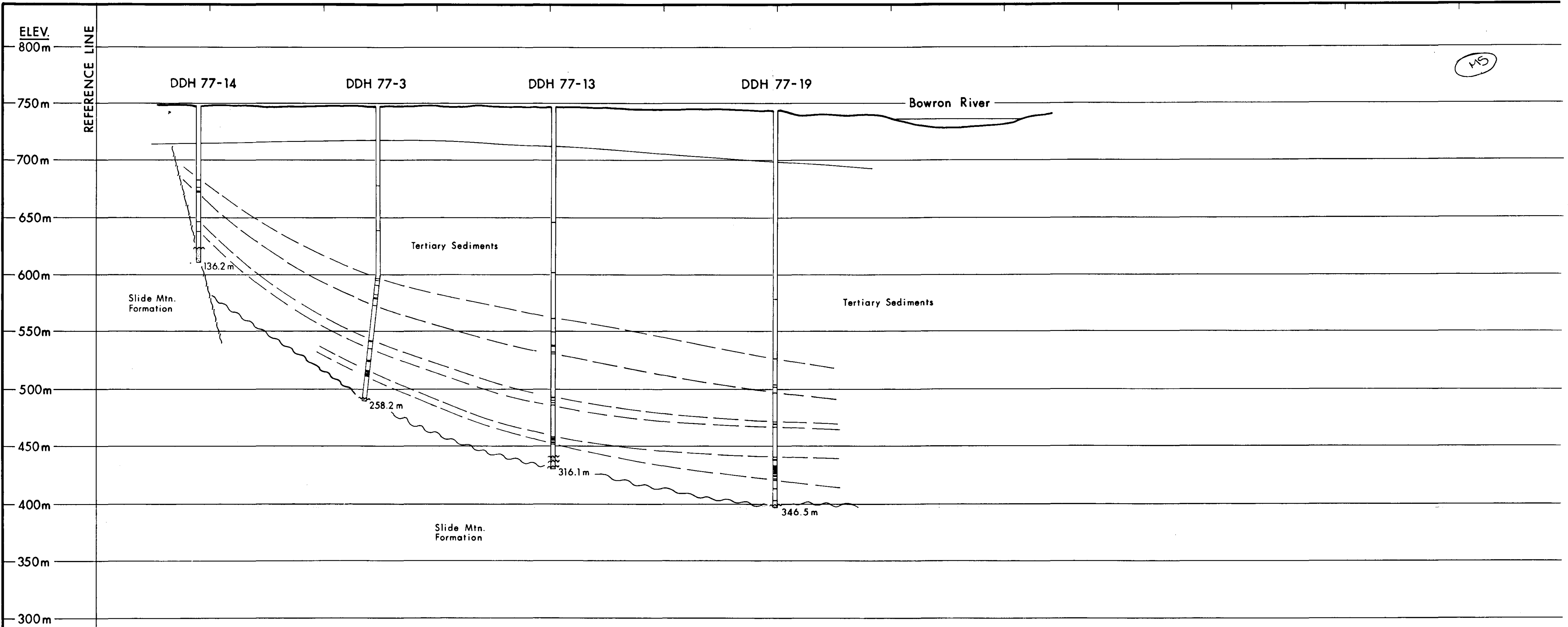
DATE REVISED	DRAFTED BY	APPROVED BY	SCALE
January 1980	P. Hall	I. Borovic	1:2000
			DRAWING NO.



<b>LEGEND</b>	<b>ELEV.</b>	<b>NORCO RESOURCES LTD.</b>		
	250m	<b>BOWRON RIVER COAL DEPOSIT</b>		
	200m	PRINCE GEORGE, B.C.		
	150m	<b>DIAMOND DRILL SECTION</b>		
	100m	<b>L 24 + 00 N 19</b>		
50m	<i>AW-Bowron River 80/23A</i>			
0	<b>IGNA Engineering &amp; Consulting Ltd.</b>			
	<b>DATE REVISED</b>	<b>DRAFTED BY</b>	<b>APPROVED BY</b>	<b>SCALE 1:2000</b>
	January 1980	P. Hall	I. Borovic	<b>DRAWING NO.</b>



<p><b>LEGEND</b></p>	ELEV.	NORCO RESOURCES LTD.		
	250m	BOWRON RIVER COAL DEPOSIT		
	200m	PRINCE GEORGE, B.C.		
	150m	DIAMOND DRILL SECTION		
100m	L 34 + 50N <b>19</b>			
50m	<i>RW-Bowron River 80(2)A</i>			
0	IGNA Engineering & Consulting Ltd.			
	DATE REVISED	DRAFTED BY	APPROVED BY	SCALE 1:2000
	January 1980	P. Hall	I. Borovic	DRAWING NO.



**LEGEND**

---

**ELEV.**  
250m  
200m  
150m  
100m  
50m  
0

**NORCO RESOURCES LTD.**

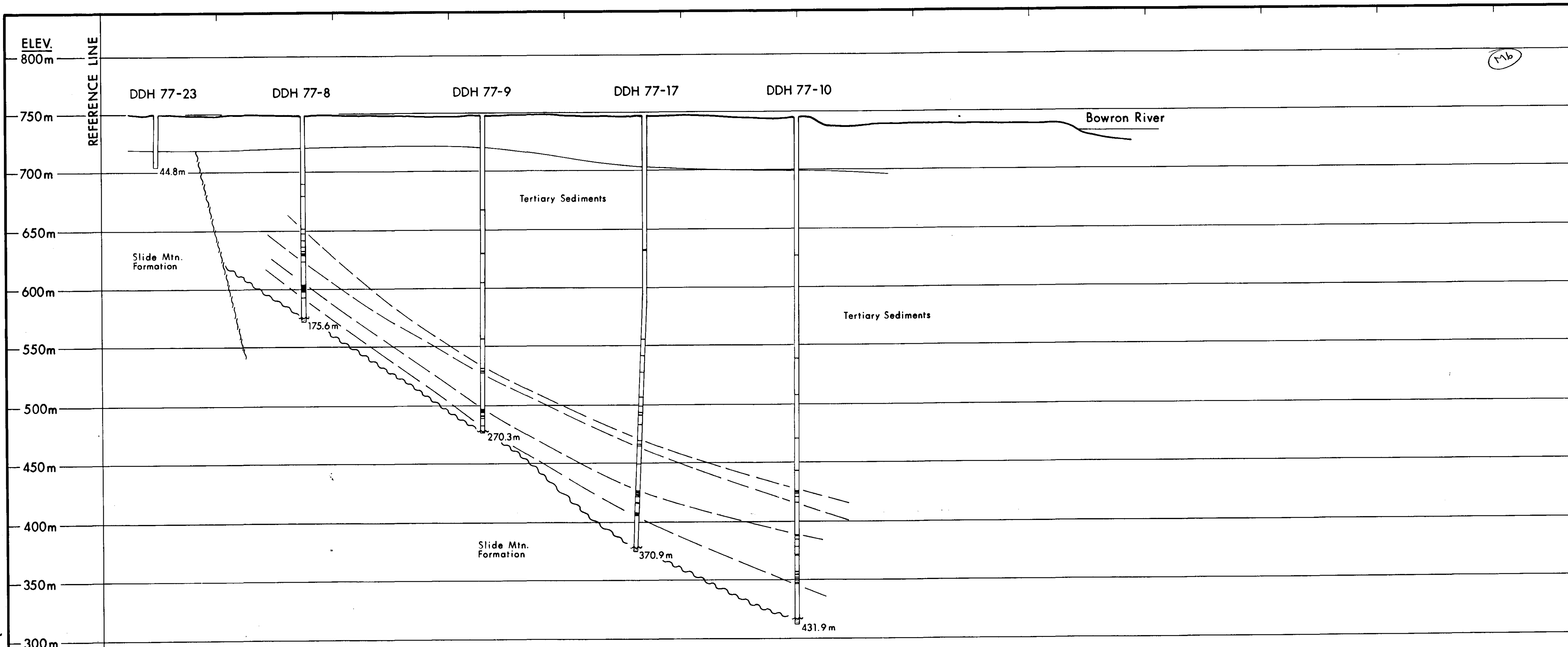
**BOWRON RIVER COAL DEPOSIT**  
PRINCE GEORGE, B.C.

**DIAMOND DRILL SECTION**  
**L31 + 50 N**      **19**

*BW - Bowron River 80(2)A*

**IGNA Engineering & Consulting Ltd.**

<b>DATE REVISED</b> January 1980	<b>DRAFTED BY</b> P. Hall	<b>APPROVED BY</b> I. Borovic	<b>SCALE</b> 1:2000
			<b>DRAWING NO.</b>



11b

**LEGEND**

---

**NORCO RESOURCES LTD.**

**BOWRON RIVER COAL DEPOSIT**  
PRINCE GEORGE, B.C.

**DIAMOND DRILL SECTION**  
**L28 + 50N**

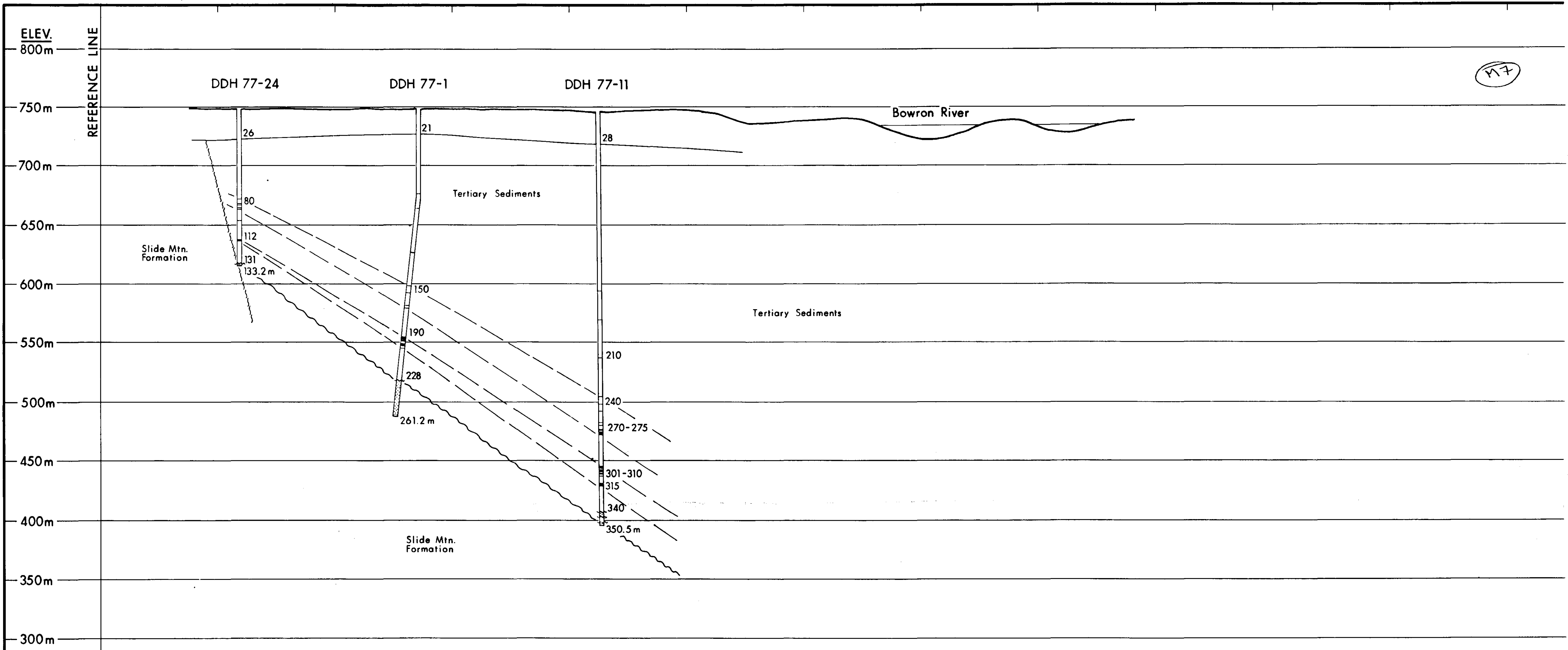
*BW-Bowron River S&L 2/77* **19**

**IGNA Engineering & Consulting Ltd.**

DATE REVISED	DRAFTED BY	APPROVED BY	SCALE
January 1980	P. Hall	I. Borovic	1:2000
			DRAWING NO.

ELEV.  
250m  
200m  
150m  
100m  
50m  
0





17

**LEGEND**

**NORCO RESOURCES LTD.**

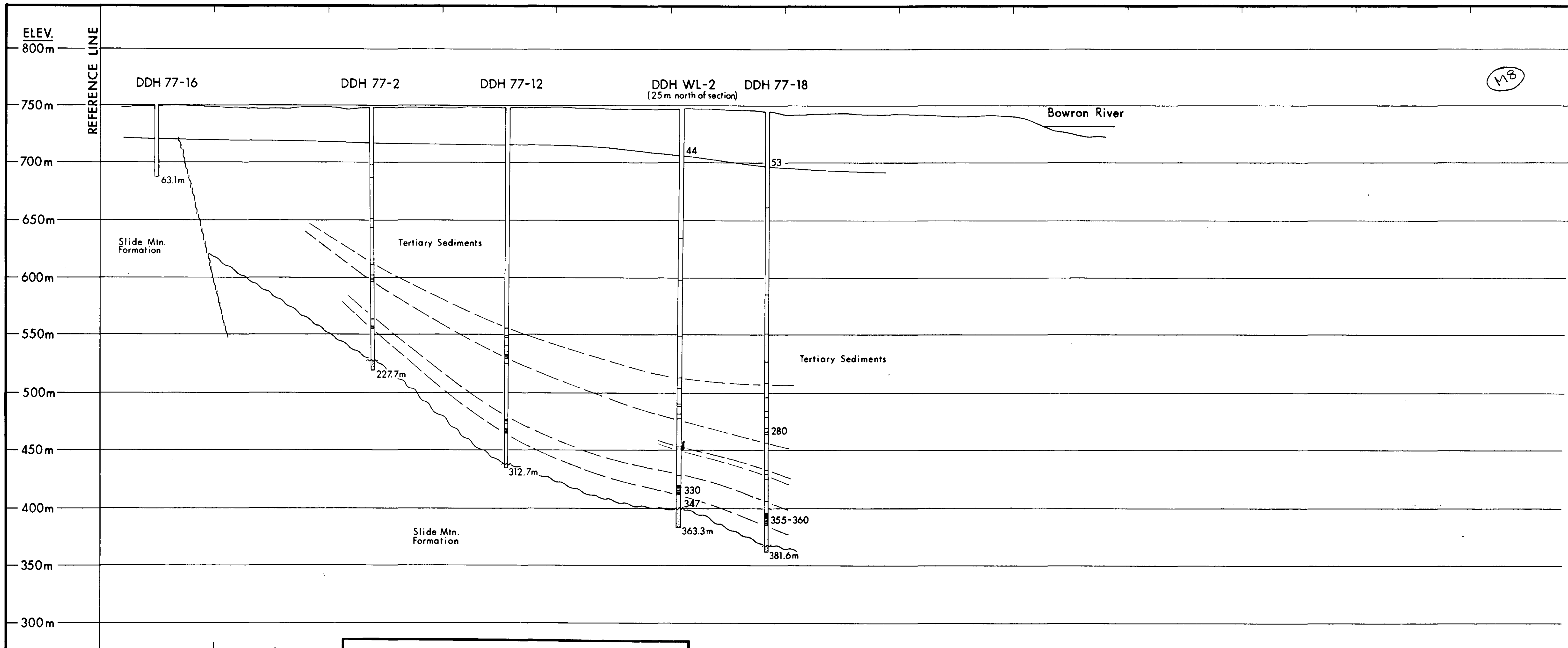
**BOWRON RIVER COAL DEPOSIT**  
PRINCE GEORGE, B.C.

**DIAMOND DRILL SECTION**  
L27 + 00N **19**

*BW-Bowron River rd(2)A*

**IGNA Engineering & Consulting Ltd.**

DATE REVISED	DRAFTED BY	APPROVED BY	SCALE
January 1980	P. Hall	I. Borovic	1:2000
			DRAWING NO.



118

**LEGEND**

**ELEV.**  
250 m  
200 m  
150 m  
100 m  
50 m  
0

**NORCO RESOURCES LTD.**

**BOWRON RIVER COAL DEPOSIT**  
PRINCE GEORGE, B.C.

**DIAMOND DRILL SECTION**  
L 30 + 00N

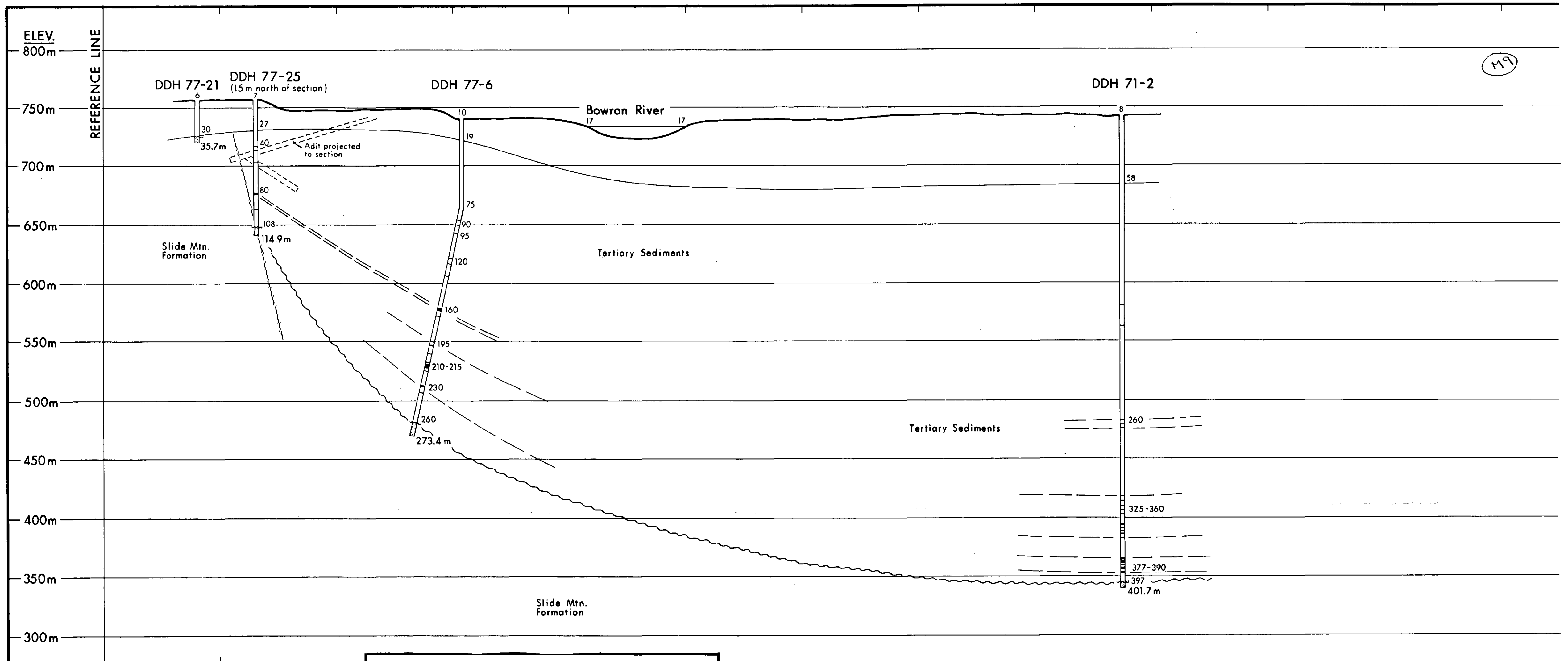
**19**

*BW - Bowron River SD(2)A*

**IGNA Engineering & Consulting Ltd.**

DATE REVISED	DRAFTED BY	APPROVED BY	SCALE
January 1980	P. Hall	I. Borovic	1:2000
			DRAWING NO.





**LEGEND**

**ELEV.**

250 m

200 m

150 m

100 m

50 m

0

**NORCO RESOURCES LTD.**

**BOWRON RIVER COAL DEPOSIT**  
PRINCE GEORGE, B.C.

**DIAMOND DRILL SECTION**  
L 25 + 50 N

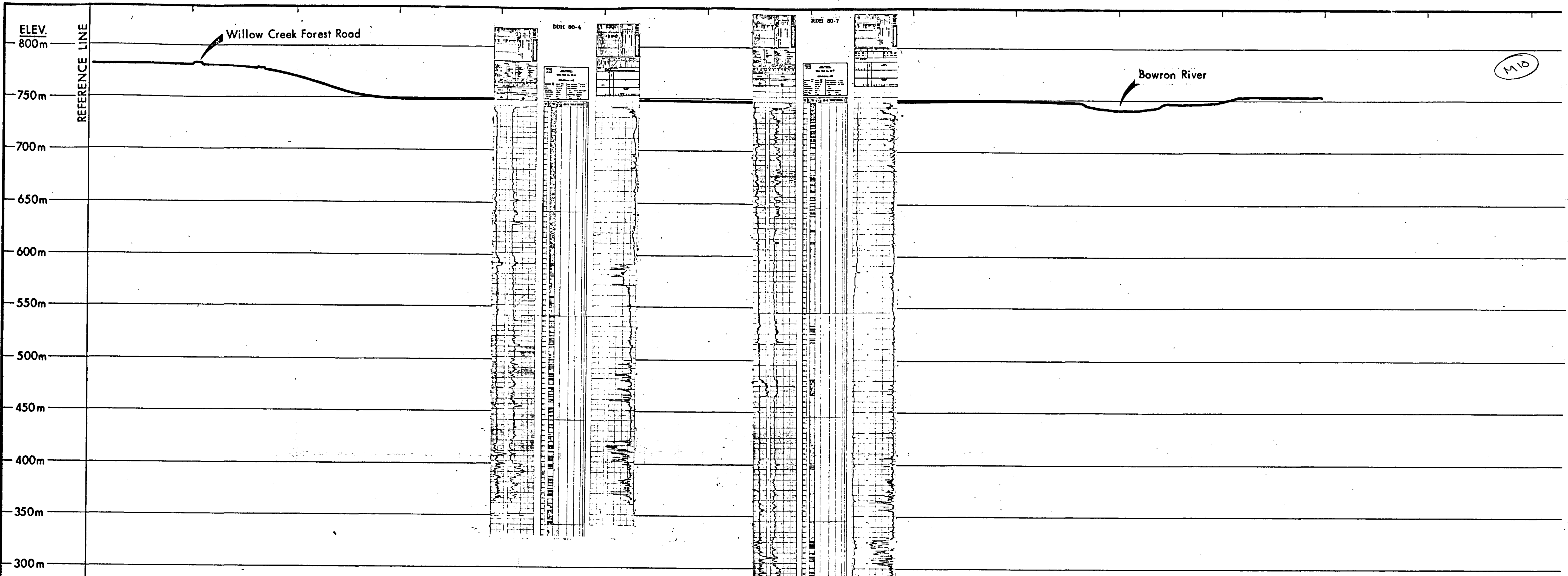
**19**

*AW - Bowron River SDC 2 SA*

**IGNA Engineering & Consulting Ltd.**

DATE REVISED	DRAFTED BY	APPROVED BY	SCALE
January 1980	P. Hall	I. Borovic	1:2000

DRAWING NO.		
-------------	--	--



**LEGEND**

---

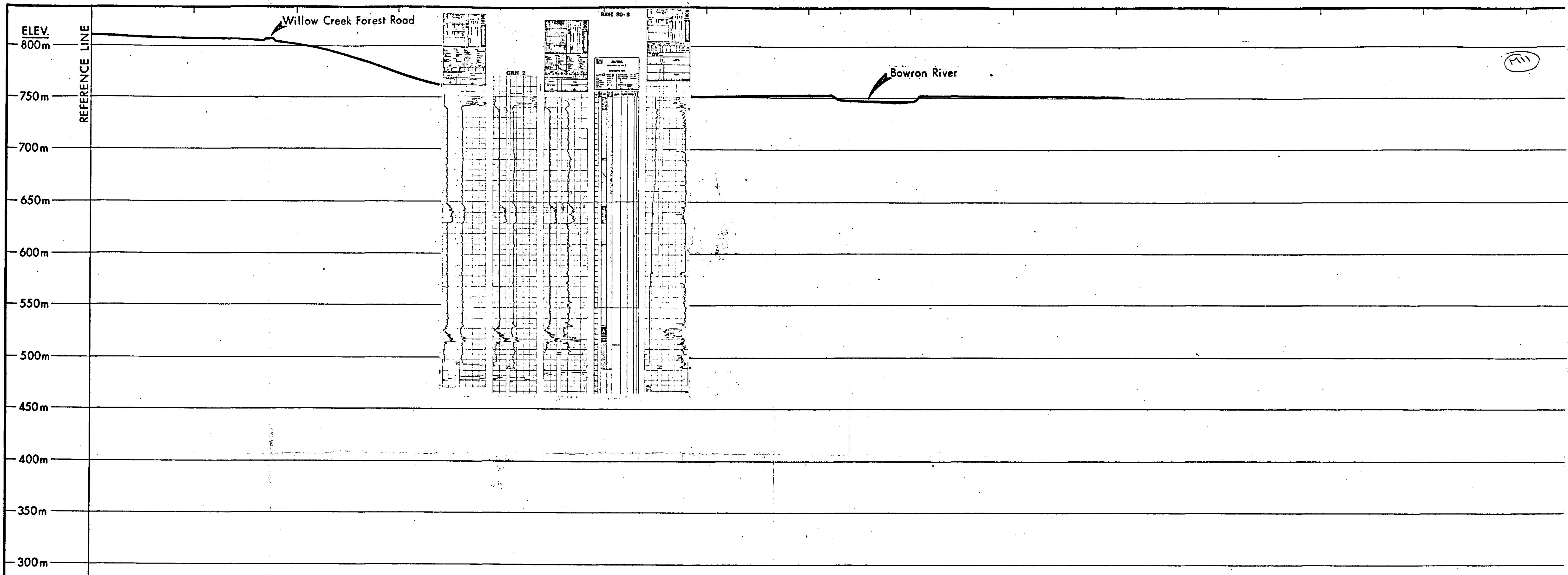
**NORCO RESOURCES LTD.**

**BOWRON RIVER COAL DEPOSIT**  
PRINCE GEORGE, B.C.

**DRILL SECTION**  
L. 12 + 00 N. **19**

**IGNA Engineering & Consulting Ltd.**

DATE REVISED	DRAFTED BY	APPROVED BY	SCALE
January 1980	P. Hall	I. Borovic	1:2000
November 1980			DRAWING NO.



**LEGEND**

**NORCO RESOURCES LTD.**

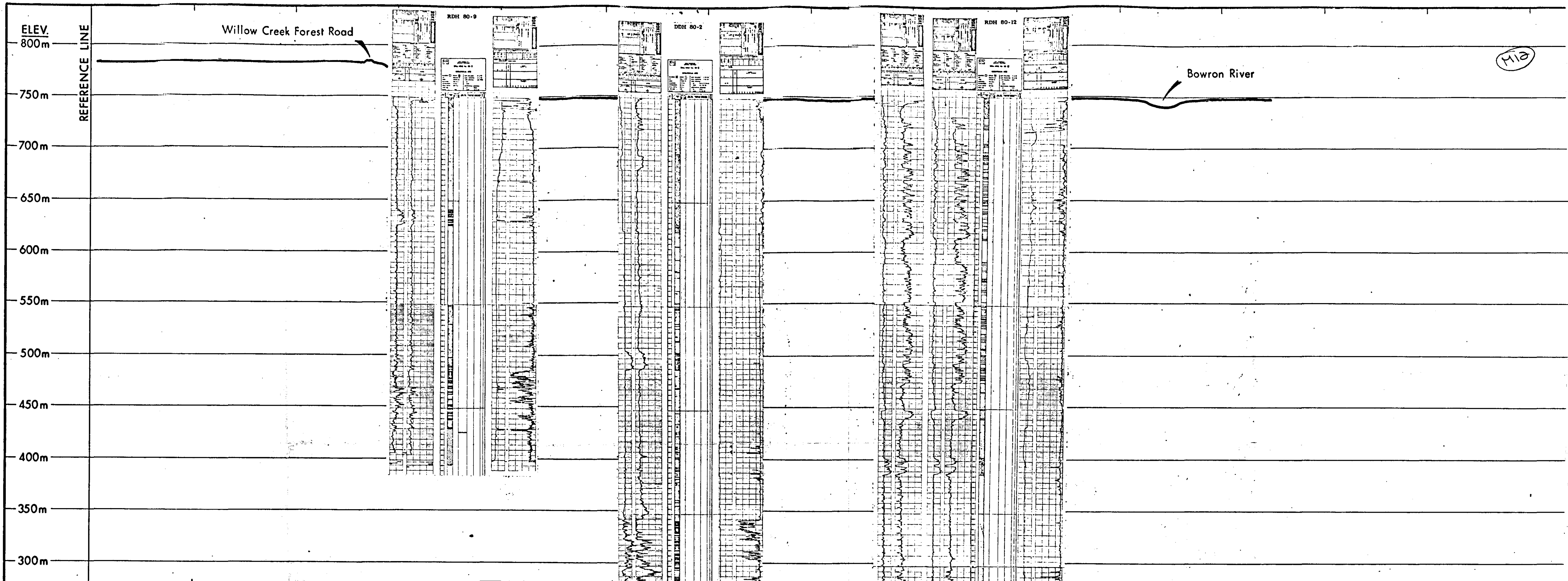
**BOWRON RIVER COAL DEPOSIT**  
PRINCE GEORGE, B.C.

**DRILL SECTION**  
L. 3 + 00 N. **19**

*BW - Bowron River (2)A*

**IGNA Engineering & Consulting Ltd.**

DATE REVISED	DRAFTED BY	APPROVED BY	SCALE
January 1980	P. Hall	I. Borovic	1:2000
November 1980			DRAWING NO.



**LEGEND**

**NORCO RESOURCES LTD.**

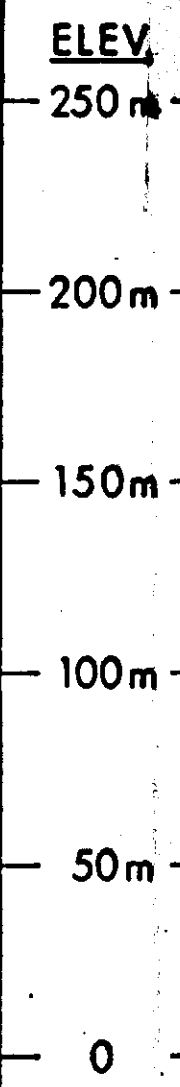
**BOWRON RIVER COAL DEPOSIT**  
PRINCE GEORGE, B.C.

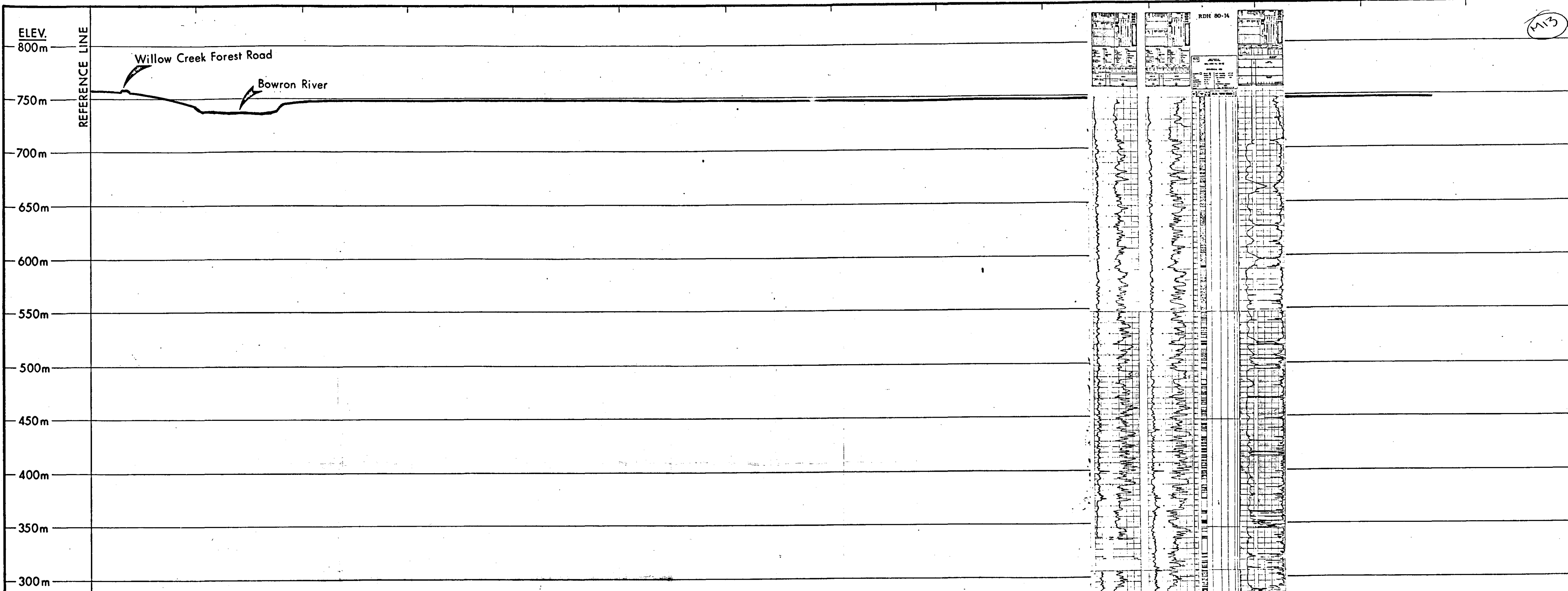
**DRILL SECTION**  
L.9 + 00 N. **19**

*BW-Bowron River 8/2/89*

**IGNA Engineering & Consulting Ltd.**

DATE REVISED	DRAFTED BY	APPROVED BY	SCALE
January 1980	P. Hall	I. Borovic	1:2000
November 1980			DRAWING NO.





**LEGEND**

ELEV.  
250m  
200m  
150m  
100m  
50m  
0

**NORCO RESOURCES LTD.**

**BOWRON RIVER COAL DEPOSIT**  
PRINCE GEORGE, B.C.

**DRILL SECTION**  
L.21+00 N. **19**

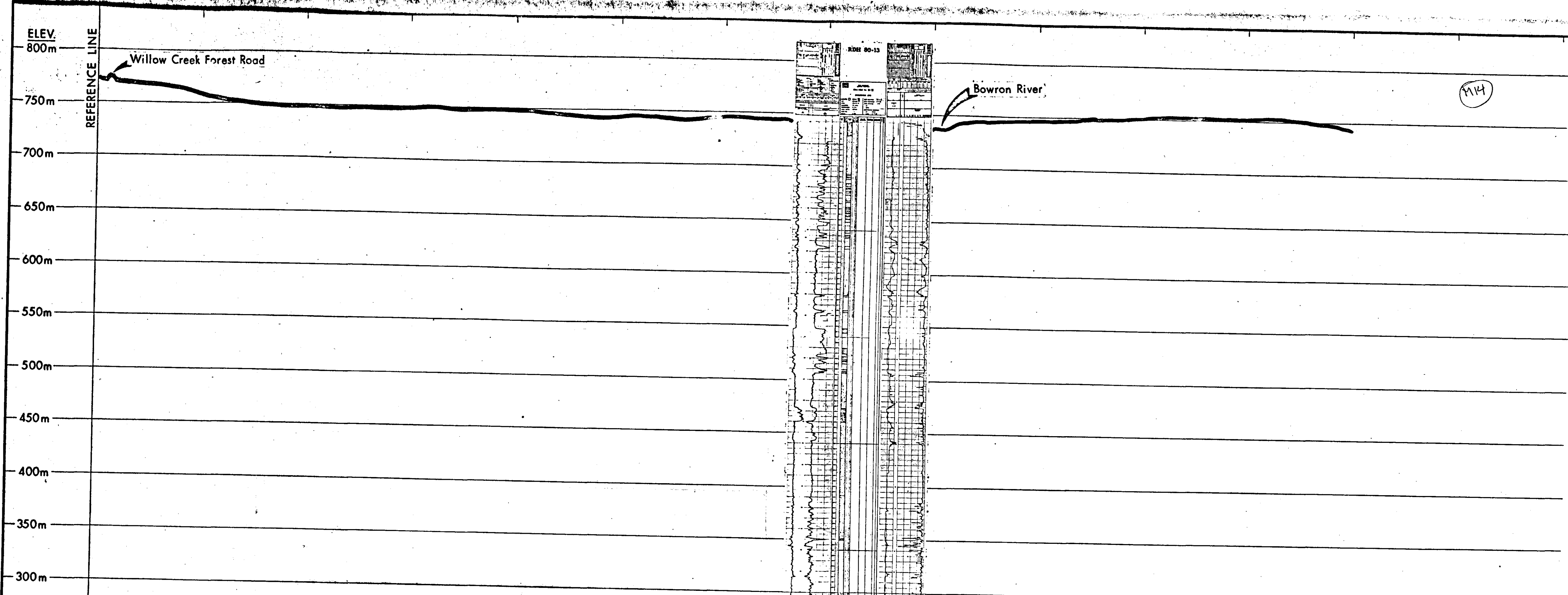
*BW-Bowron River 80L 2/88*

**IGNA Engineering & Consulting Ltd.**

DATE REVISED	DRAFTED BY	APPROVED BY	SCALE
January 1980	P. Hall	I. Borovic	1:2000
November 1980			DRAWING NO.

L 21+00 N





**LEGEND**

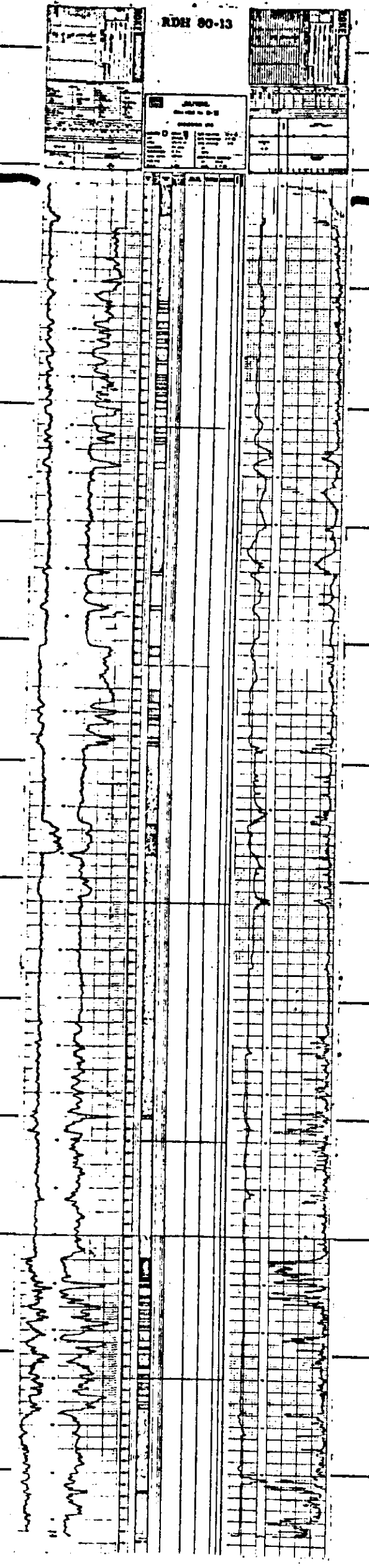
---

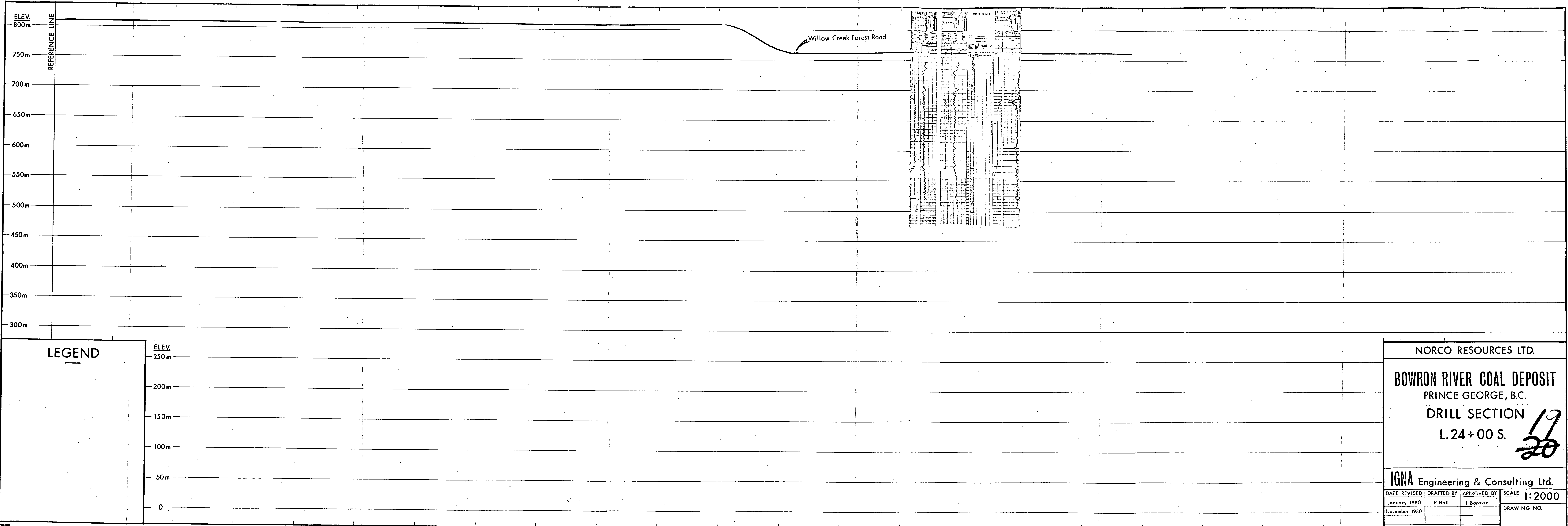
**NORCO RESOURCES LTD.**

**BOWRON RIVER COAL DEPOSIT**  
 PRINCE GEORGE, B.C.  
**DRILL SECTION**  
 L.15+00 N. **19**

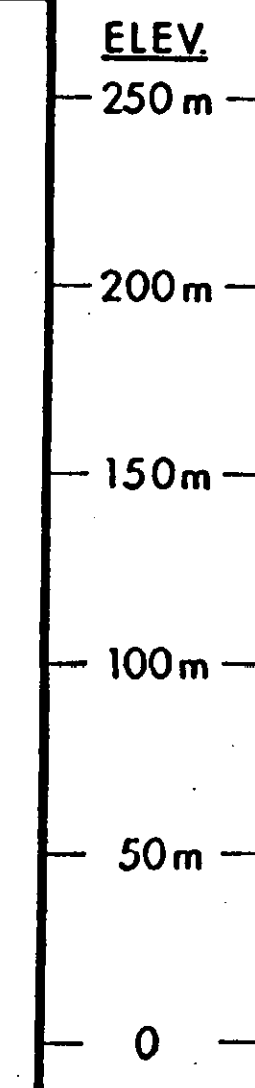
**IGNA Engineering & Consulting Ltd.**

DATE REVISED	DRAFTED BY	APPROVED BY	SCALE
January 1980	P. Hall	I. Borovic	1:2000
November 1980			DRAWING NO.





**LEGEND**



NORCO RESOURCES LTD.

**BOWRON RIVER COAL DEPOSIT**  
 PRINCE GEORGE, B.C.

**DRILL SECTION**  
 L.24+00 S. 19  
20

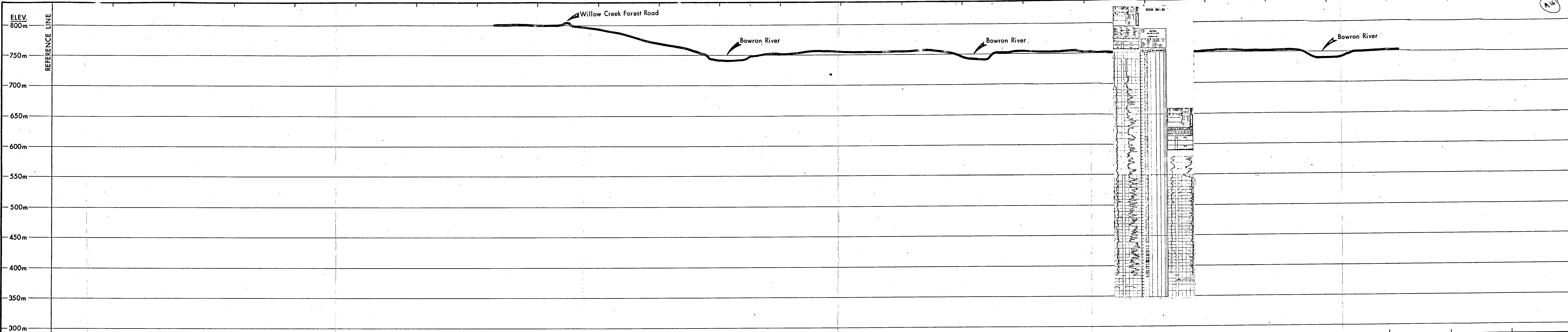
**IGNA Engineering & Consulting Ltd.**

DATE REVISED	DRAFTED BY	APPROVED BY	SCALE
January 1980	P. Hall	I. Borovic	1:2000
November 1980			

DRAWING NO.



116



**LEGEND**

ELEV.  
250m  
200m  
150m  
100m  
50m  
0

NORCO RESOURCES LTD.

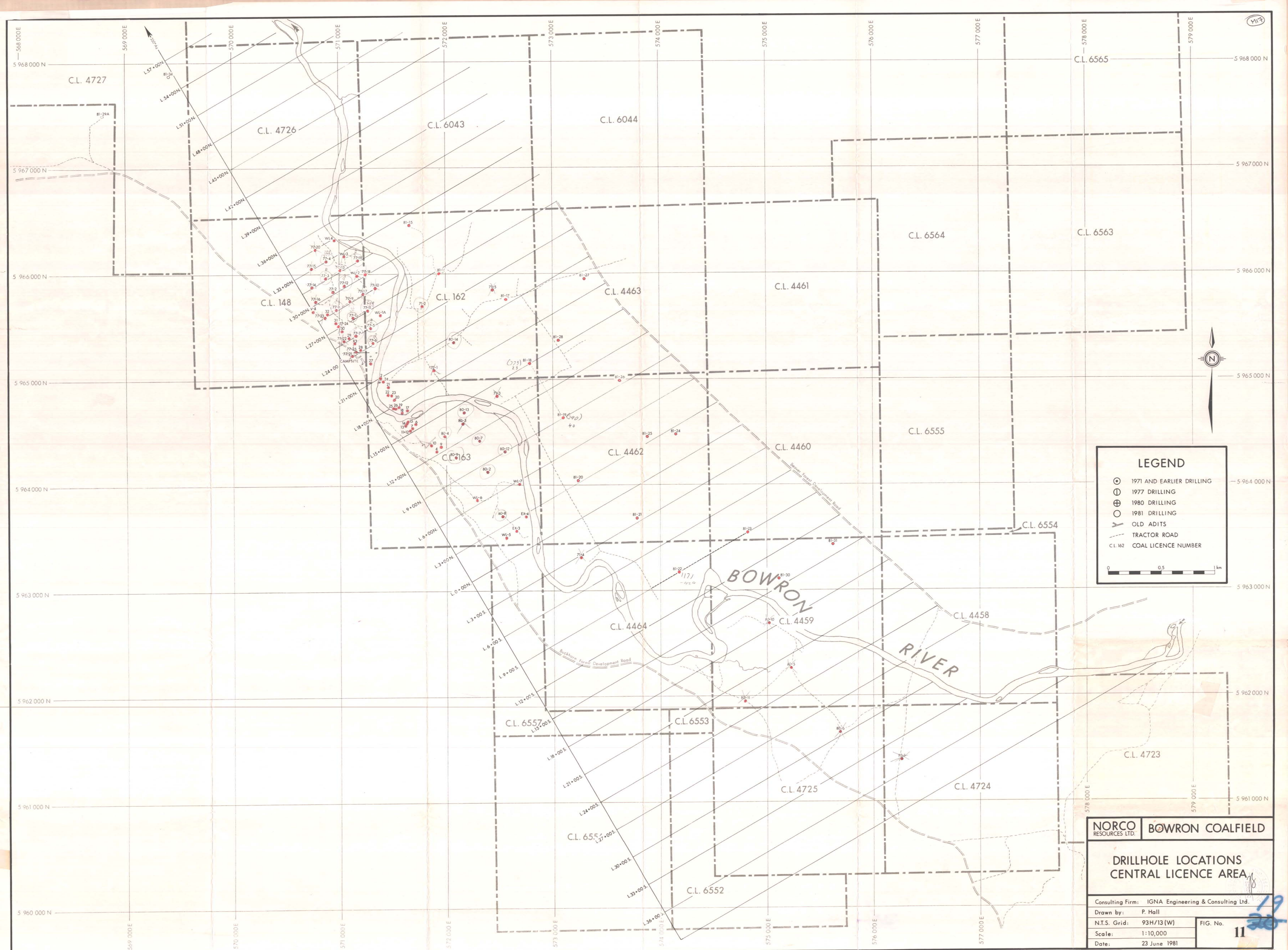
**BOWRON RIVER COAL DEPOSIT**  
PRINCE GEORGE, B.C.

DRILL SECTION **19**  
L.15+00 S. **20**

**IGNA Engineering & Consulting Ltd.**

DATE REVISED	DRAFTED BY	APPROVED BY	SCALE
January 1980	P. Hall	I. Borovic	1:2000
November 1980			DRAWING NO.





**LEGEND**

- ⊙ 1971 AND EARLIER DRILLING
- ⊕ 1977 DRILLING
- ⊗ 1980 DRILLING
- 1981 DRILLING
- OLD ADITS
- - - TRACTOR ROAD
- C.L. 162 COAL LICENCE NUMBER

0 0.5 1 km

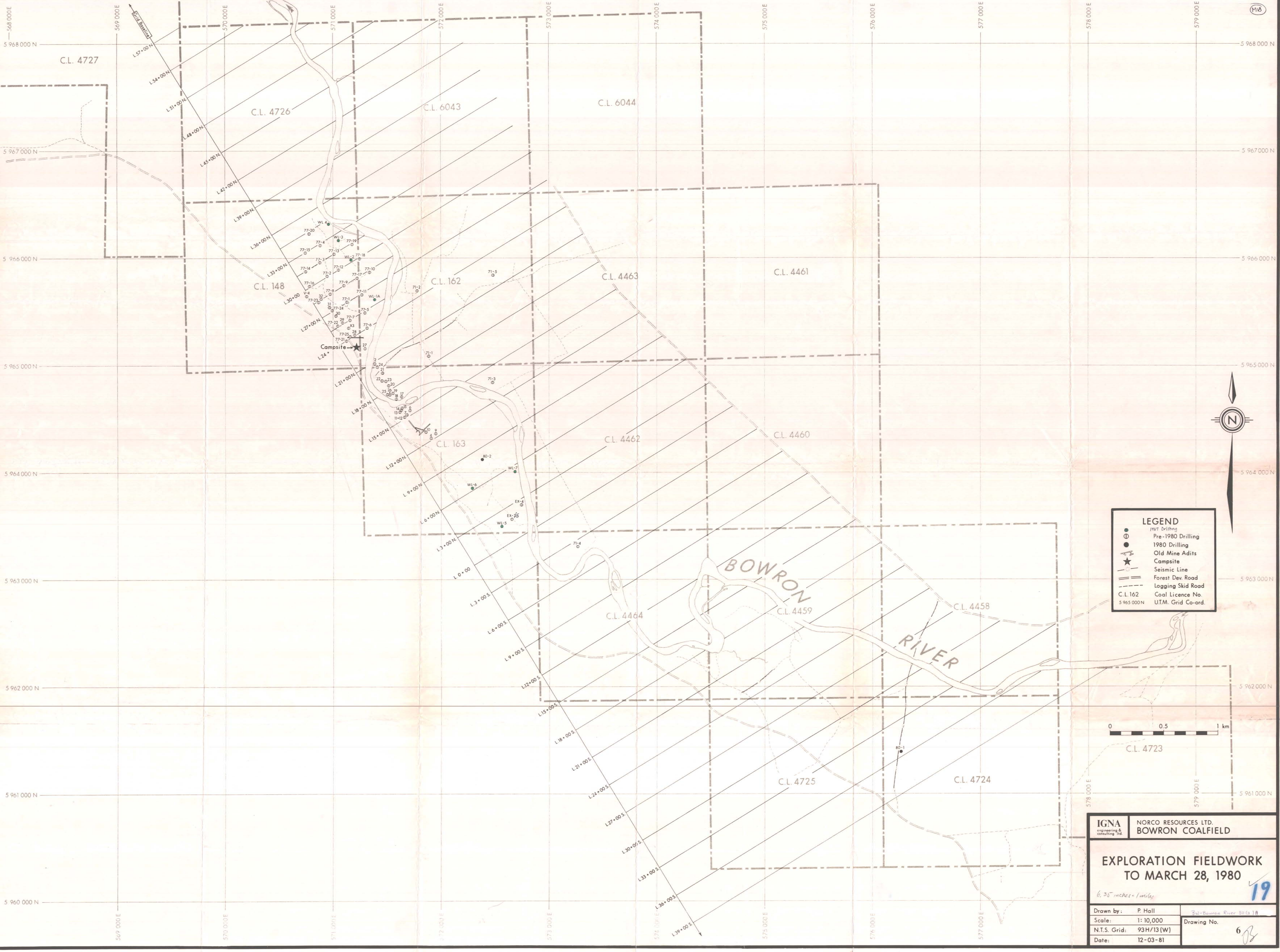
**NORCO RESOURCES LTD. BOWRON COALFIELD**

**DRILLHOLE LOCATIONS CENTRAL LICENCE AREA**

Consulting Firm: IGNA Engineering & Consulting Ltd.  
 Drawn by: P. Hall  
 N.T.S. Grid: 93H/13(W) FIG. No. 11  
 Scale: 1:10,000  
 Date: 23 June 1981

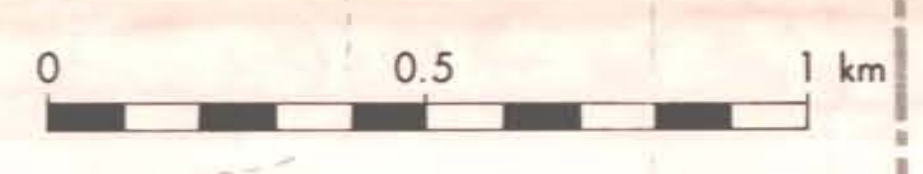
Bd - Bowron River 300 P. 10





**LEGEND**

- (small) 1987 Drilling
- (medium) Pre-1980 Drilling
- (large) 1980 Drilling
- ☆ Old Mine Adits
- ★ Campsite
- Seismic Line
- Forest Dev. Road
- - - Logging Skid Road
- C.L. 162 Coal Licence No.
- 5 965 000 N UTM. Grid Co-ord.



<b>IGNA</b> engineering & consulting Ltd.	<b>NORCO RESOURCES LTD.</b> <b>BOWRON COALFIELD</b>
<b>EXPLORATION FIELDWORK TO MARCH 28, 1980</b>	
<i>6.35 inches x 10 miles</i>	
Drawn by: P. Hall	Bowron River 50 (a) 18
Scale: 1:10,000	Drawing No.
N.T.S. Grid: 93H/13(W)	6
Date: 12-03-81	19