



ISSUE	DATE	INIT'S	REVISIONS

70
m

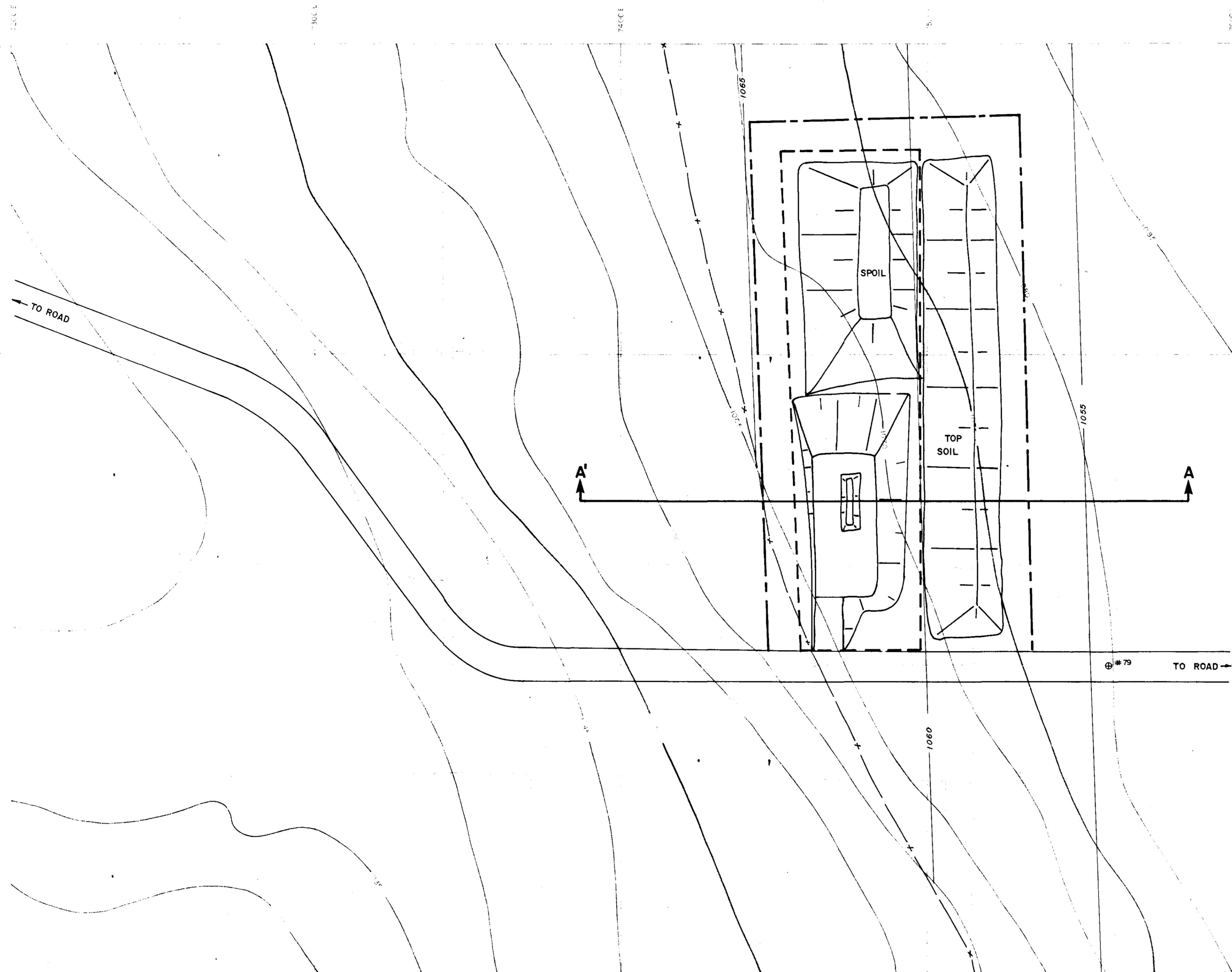
SCALE	BY	DATE

TITLE

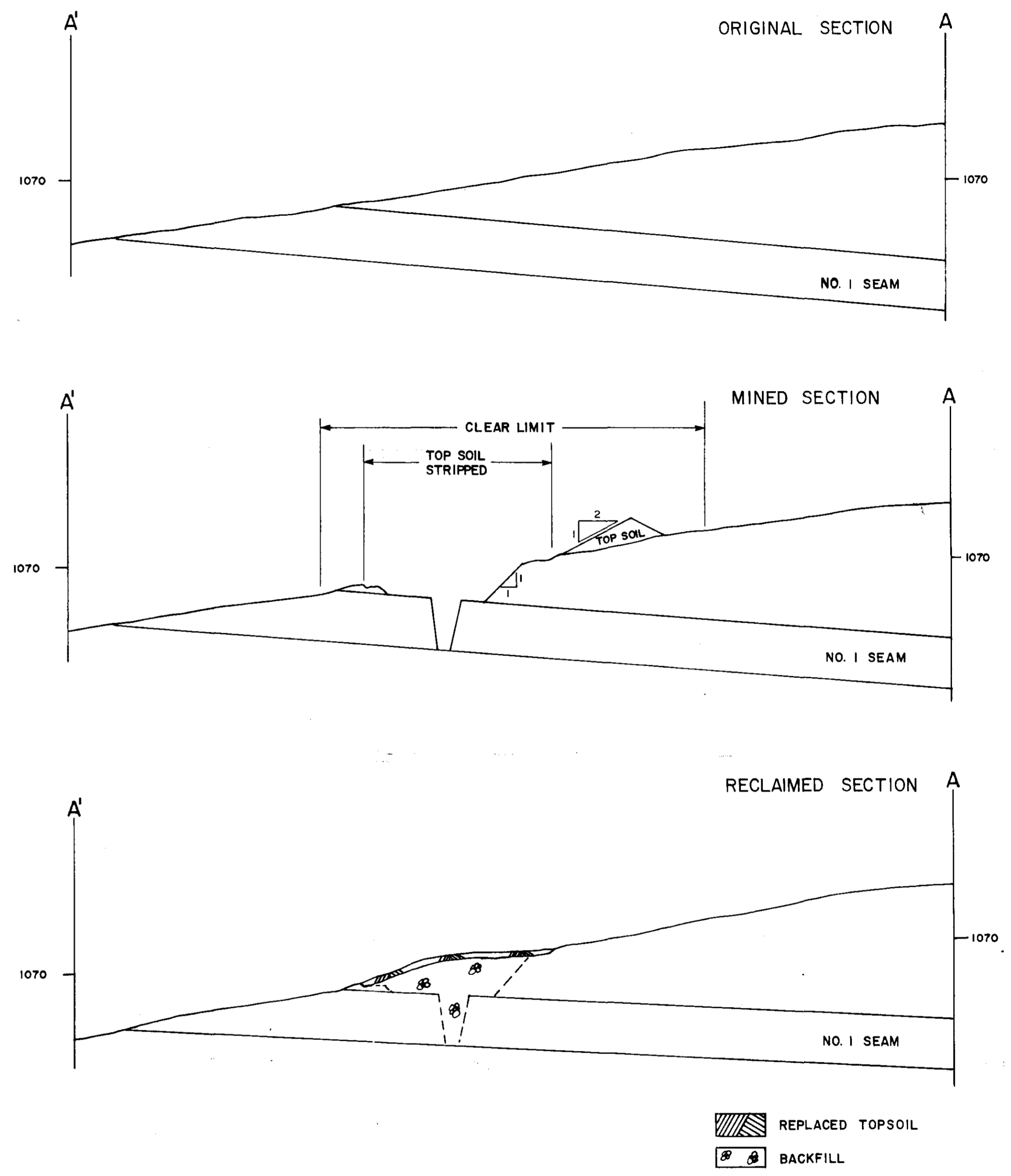
DRAWING NO. **70**
m

REFERENCE DRAWINGS
 LICENSE 3670
 MIDDLE QUINLAN HOLE
 1977 - EXPLORATION

ISSUE	DATE	INIT'S



- CLEARING LIMIT
- TOPSOIL STRIPPING LIMIT (1')
- 1060 --- TOP COAL CONTOUR
- ⊕ DRILL HOLE
- x OUTCROP



AREA CLEARED	0.35 Acres
TOPSOIL STRIPPED	270 B.C.Y.
OVERBURDEN STRIPPED	450 B.C.Y.
COAL UNCOVERED	330 B.C.Y.
COAL REMOVED	20 Tons

SEE FIGURE 1 FOR SITE LOCATION.

QUINSAM PROPERTY



BULK SAMPLE SITE - No. 1 NORTH

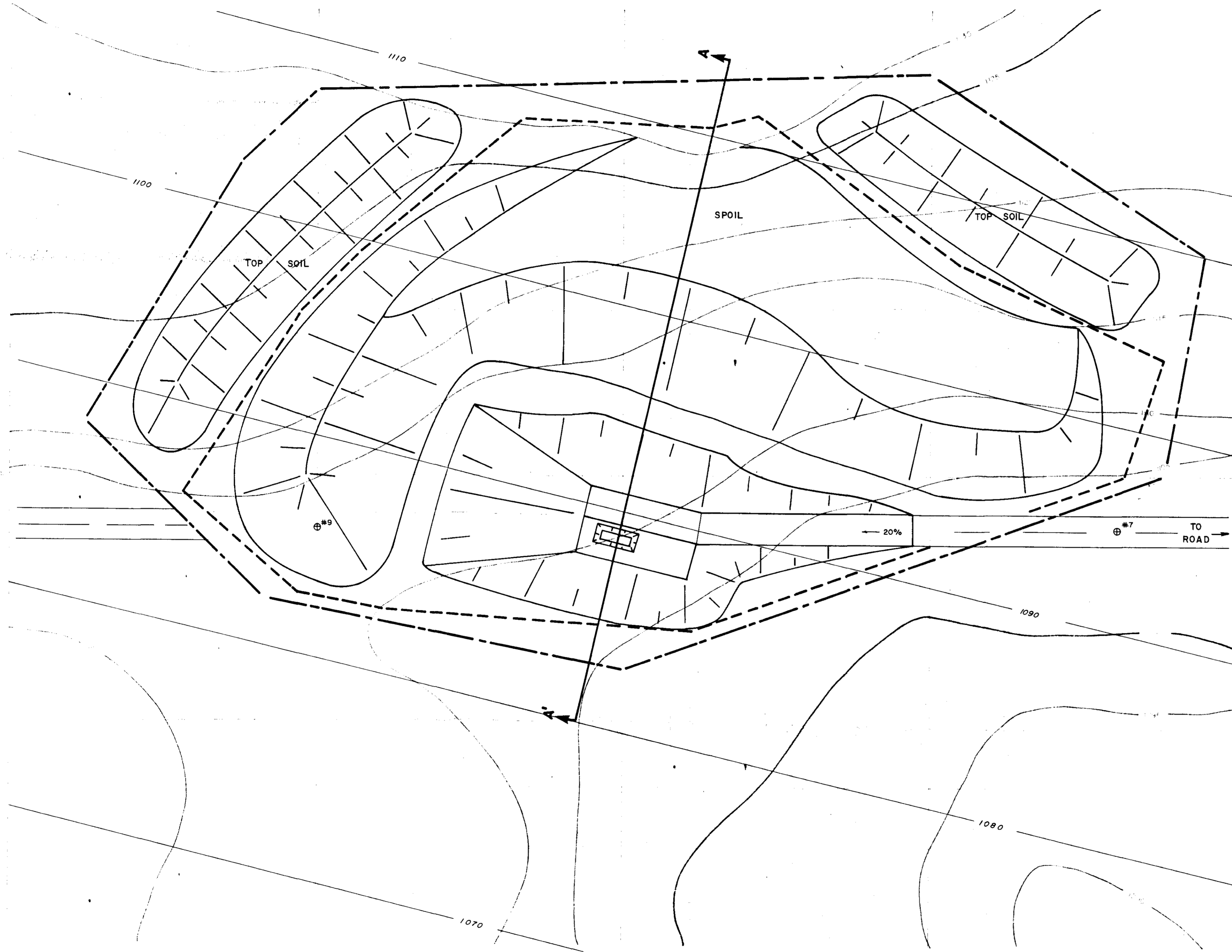
FIGURE 2

ex - Quinsam 77(2)F

70
M2

DRAWING NO.

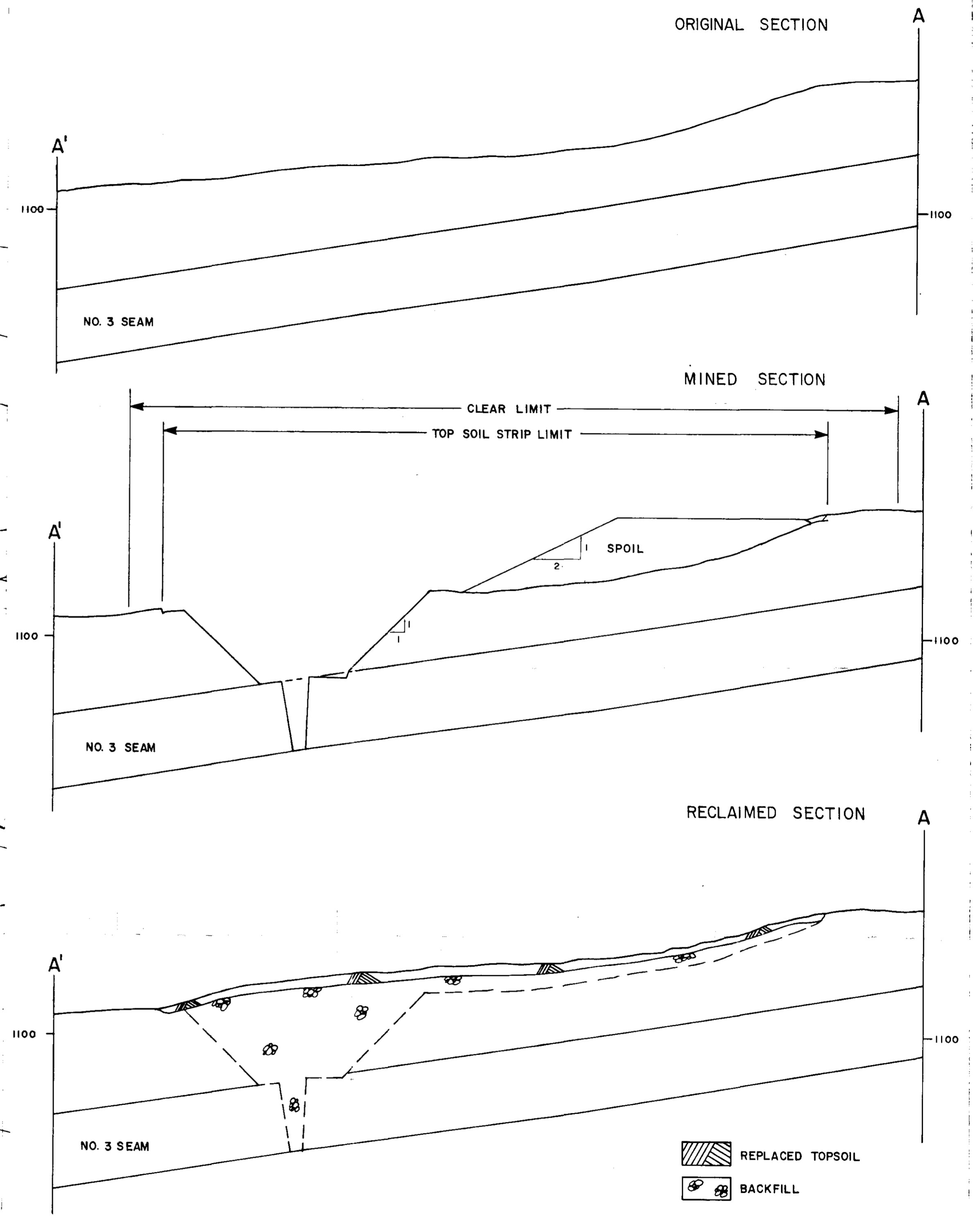
ISSUE



- CLEAR LIMIT
- - - TOPSOIL STRIPPING LIMIT (1')
- /// TOP COAL CONTOUR
- ⊕ DRILL HOLE

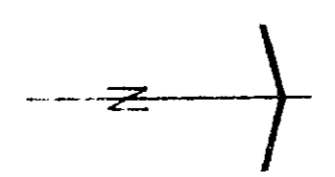
SEE FIGURE 1 FOR SITE LOCATION.

QUINSAM PROPERTY



AREA CLEARED 54,650 Ft.² = 1.2 Acres
 TOPSOIL STRIPPED / STOCKPILED = 1400 B.C.Y.
 OVERBURDEN STRIPPED = 3300 B.C.Y.
 COAL UNCOVERED = 230 B.C.Y.
 COAL REMOVED = 20 Tons

- REPLACED TOPSOIL
- BACKFILL



BULK SAMPLE SITE - No. 3

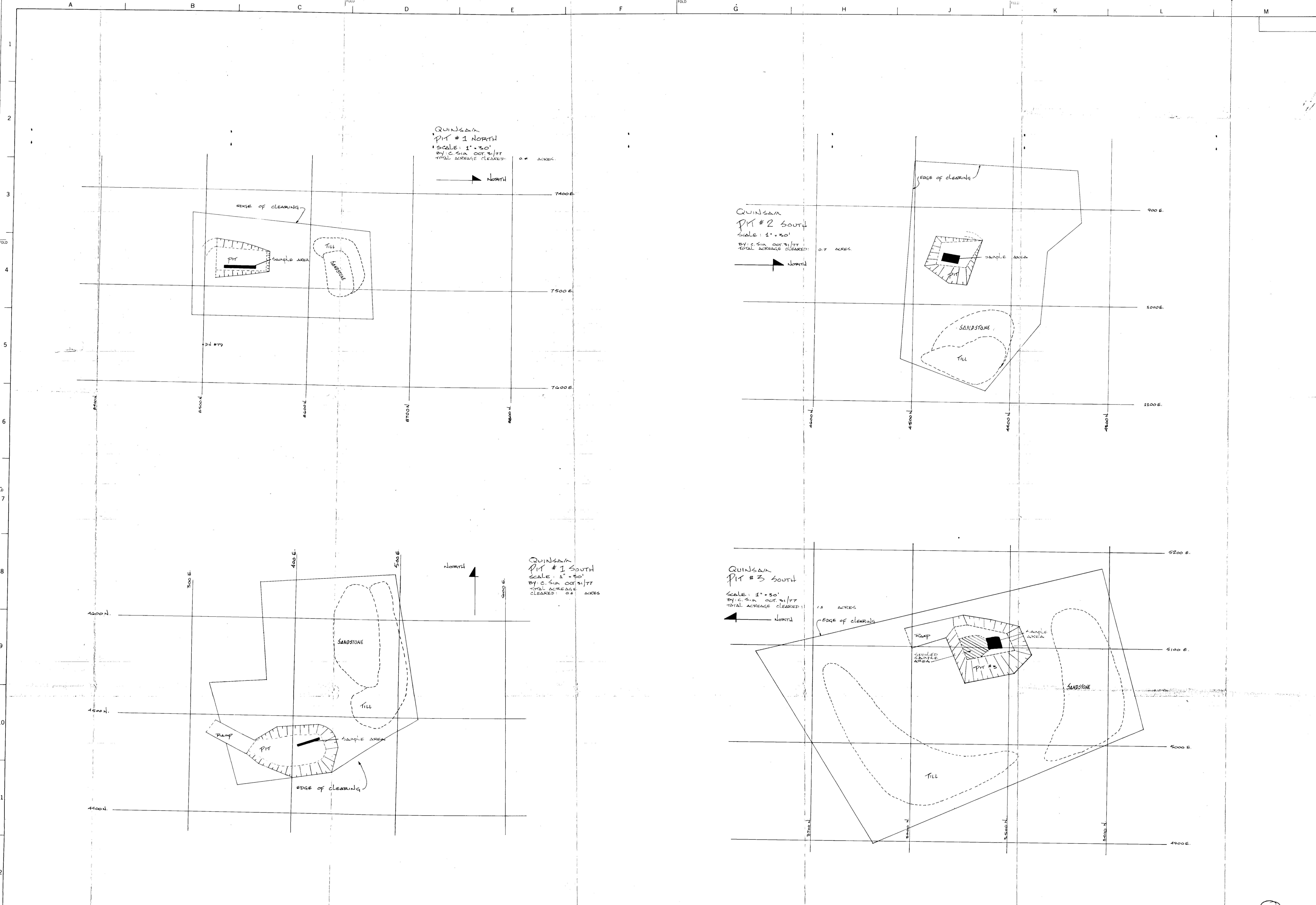
FIGURE 3

ex-Quinsam 77(2)F

70
m3

DRAWING NO.

ISSUE



REFERENCE DRAWINGS	ISSUE DATE	INITL	REVISIONS	ISSUE DATE	INITL	REVISIONS

QUINSAM.

SCALE	BY	DATE
1" = 30'	C. SIM	31-10-77

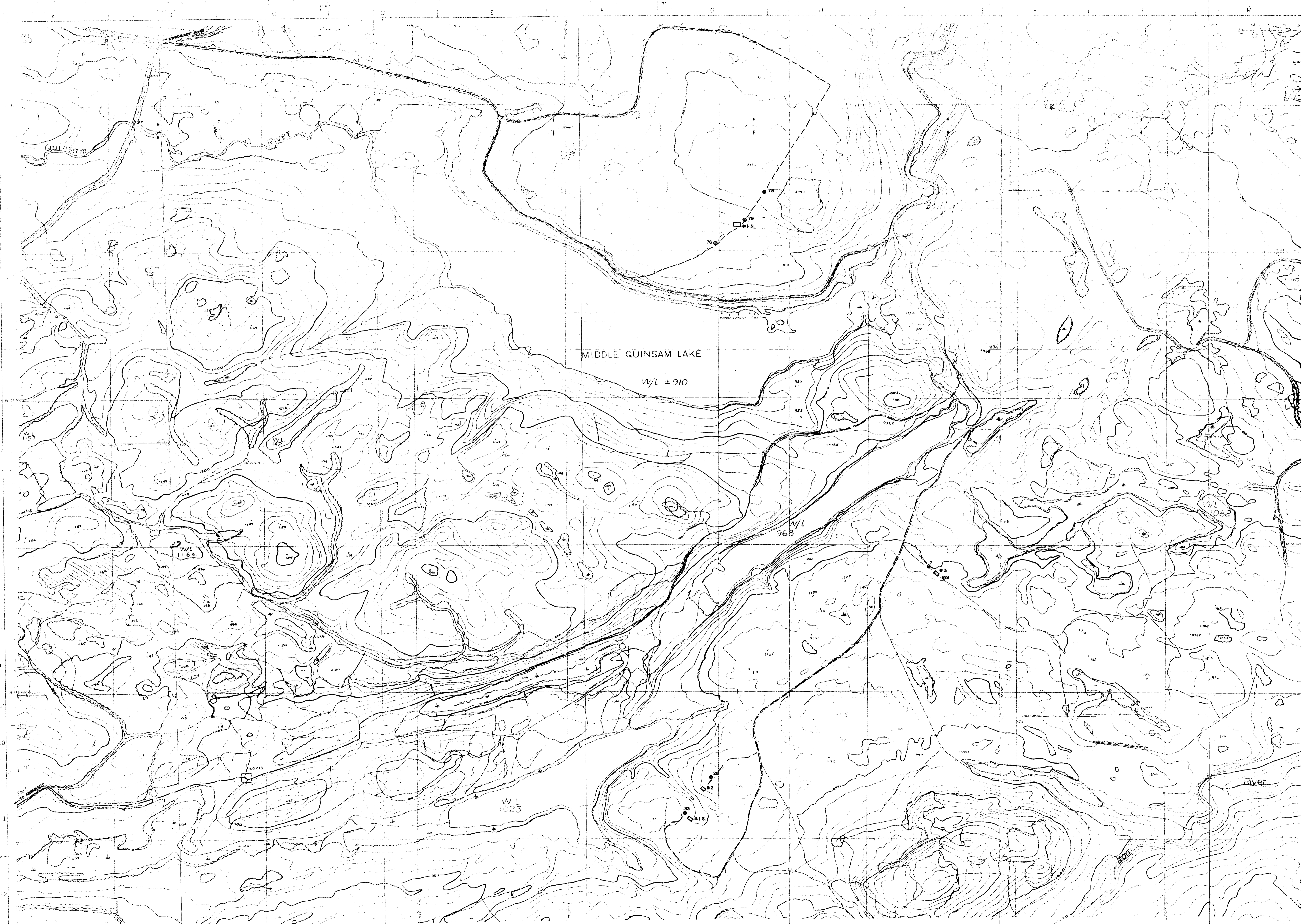
TITLE
 PITS 1 N, 1 S, 2 & 3.
 CR - Quinsam 77(2)F

70/174

DRAWING NO.
 QS.G.051/PH. 11.A.

70
M4

ISSUE



REFERENCE DRAWINGS:
SEE FIGURES 2, 3, 4, & 5 FOR DETAIL OF BULK
SAMPLE SITES.

ISSUE	DATE	INITIALS

REVISIONS

ISSUE	DATE	INITIALS

REVISIONS

LEGEND

- DRILL HOLE LOCATION
- SAMPLE SITE
- ROAD ACCESS NORTH BLOCK
- - - ROAD ACCESS SOUTH BLOCK

SCALE 1" = 400'
DRAWN BY D. MORGAN
CHECKED BY D. MORGAN
APPROVED BY D. MORGAN
DATE JULY 1977

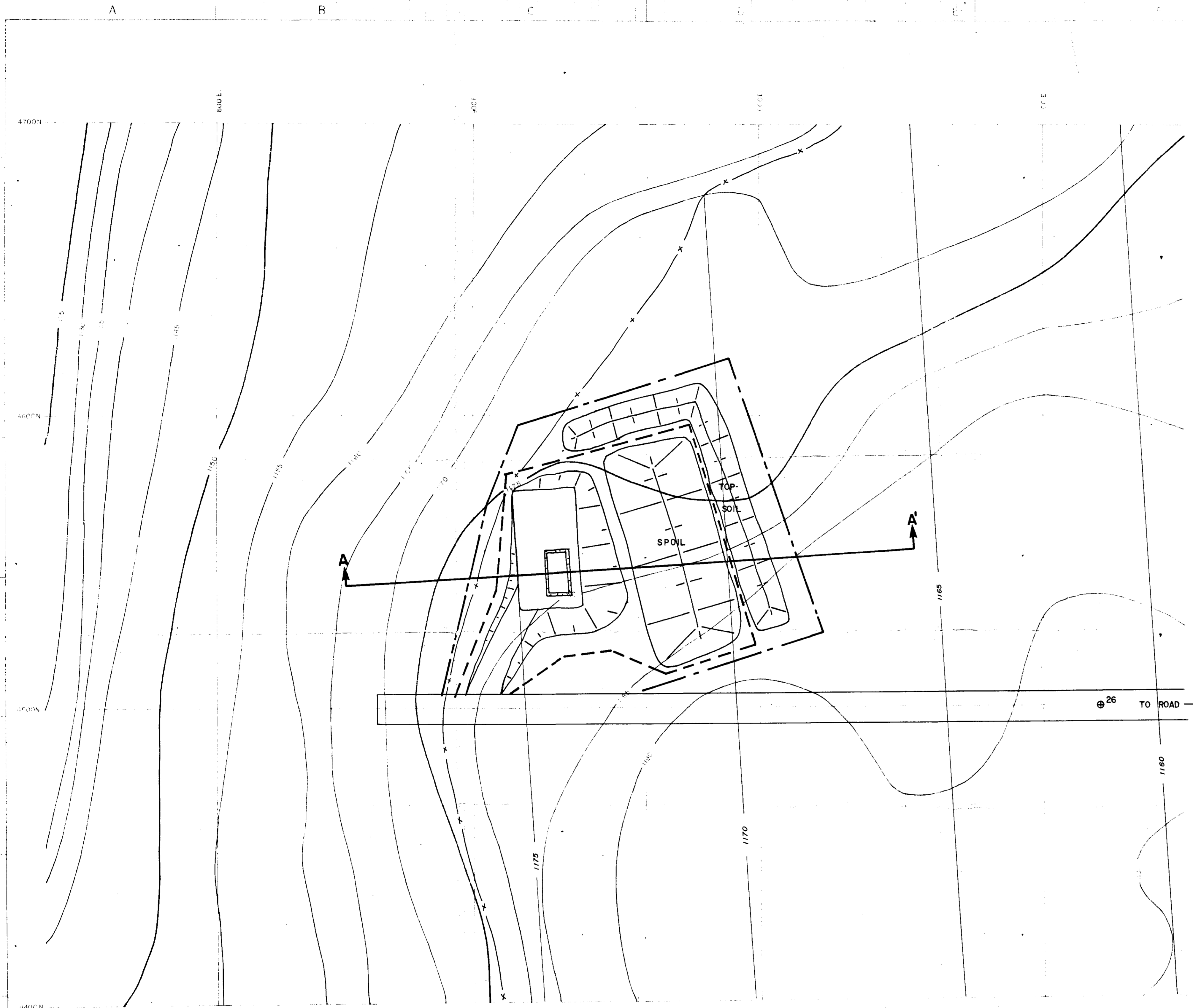
TITLE
QUINSAM LAKE
BULK SAMPLES LOCATION MAP

70
MS

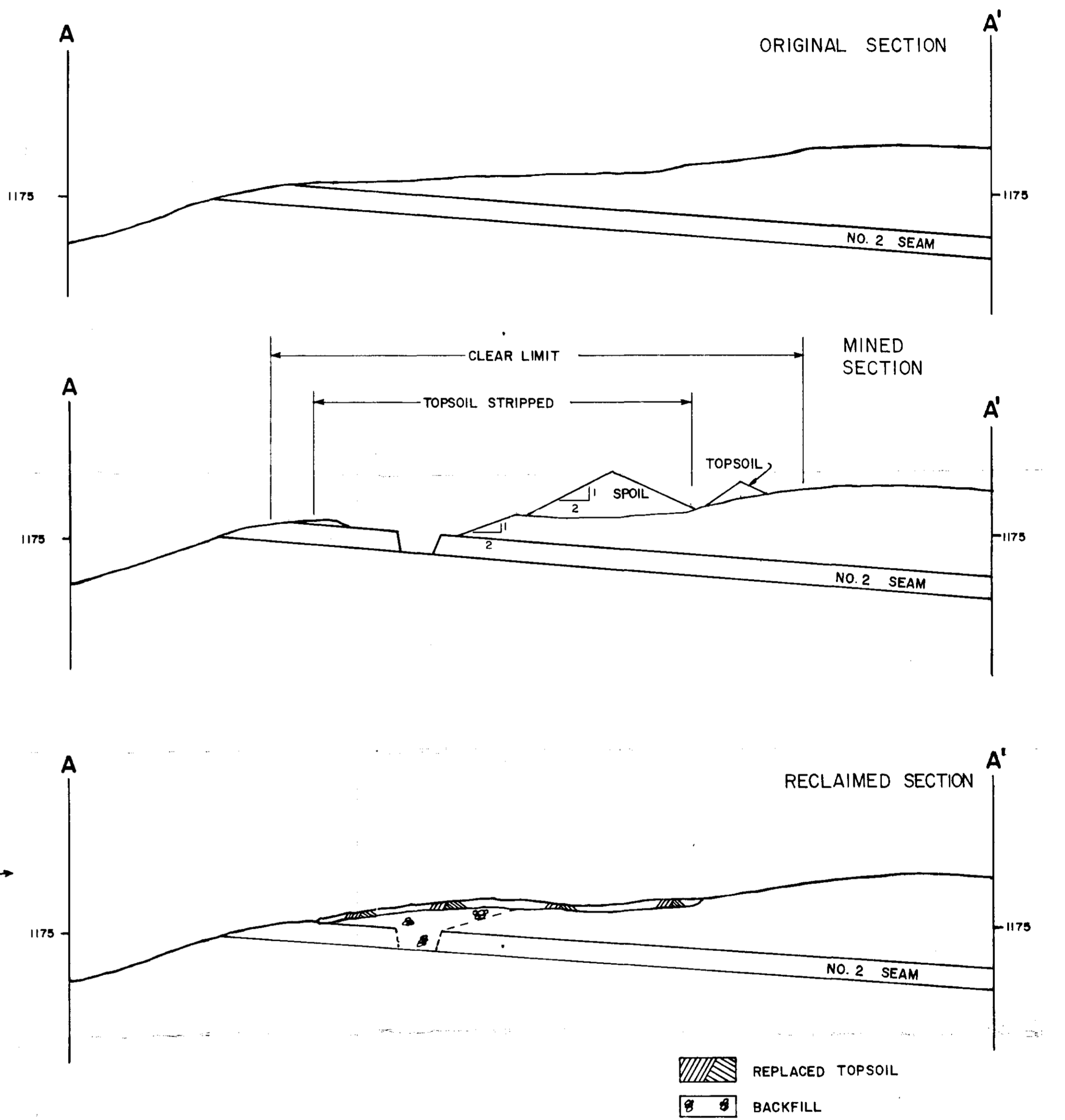
DRAWING NO. QS. G. 021 / PH. 11. A

FIGURE 1
CR - Quinsam 77 (2) E

ISSUE



- CLEARING LIMIT
- - - TOPSOIL STRIPPING LIMIT
- 1170 — TOP COAL CONTOUR
- x - OUTCROP
- ⊕ DRILL HOLE

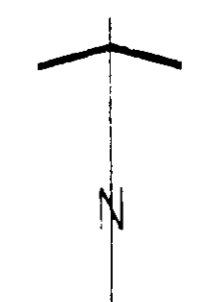


AREA CLEARED 0.25 Acres
 TOPSOIL STRIPPED 225 B.C.Y.
 OVERBURDEN STRIPPED 370 B.C.Y.
 COAL UNCOVERED 108 B.C.Y.
 COAL REMOVED 20 Tons

REFERENCE DRAWINGS
 SEE FIGURE 1 FOR SITE LOCATION.

DATE: DA-1-1971
 REVISIONS

QUINSAM PROPERTY



BULK SAMPLE SITE - No. 2

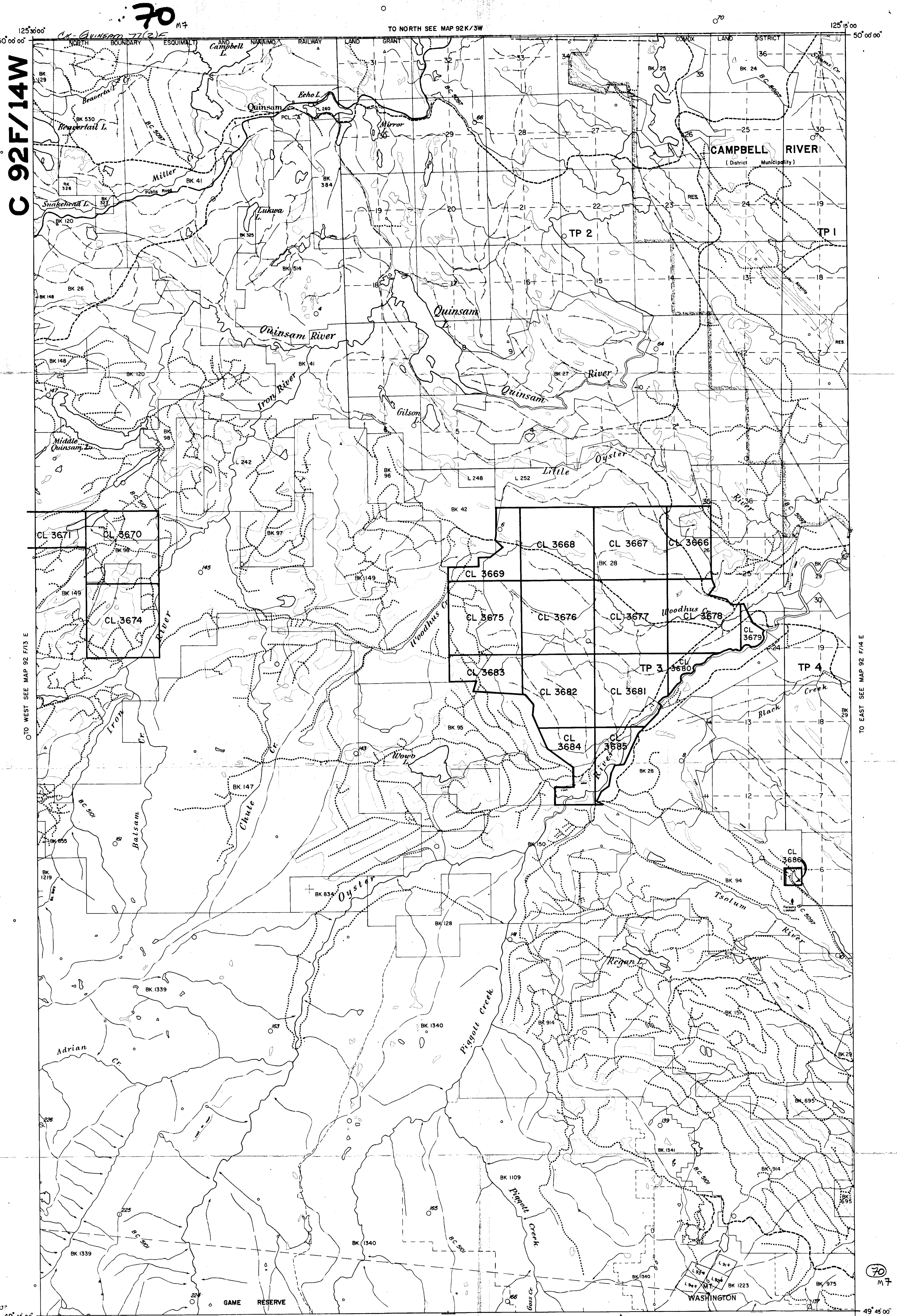
FIGURE 4

CX-QUINSAM 77(2)F

70
16

DRAWN BY: TD

ISSUE



C 92F/14W

C 92F/14W

70 M7

LEGEND	
Drill hole	Open pit or stripped area
Proposed drill hole	Seam tracing
Shaft	Access road
Adit	Exploration road
Trench or open cut	Proposed exploration road

TO NORTH SEE MAP 92K/3W

COAL TITLES REFERENCE MAP 92F/14W
 DEPARTMENT OF MINES AND PETROLEUM RESOURCES, VICTORIA, B.C.
 FOR INFORMATION AND MAP COPIES APPLY TO THE OFFICE OF THE CHIEF GOLD COMMISSIONER, VICTORIA, B.C.

SCALE: 1 : 31,680

TO SOUTH SEE MAP 92F/11W

TO WEST SEE MAP 92 F/13 E

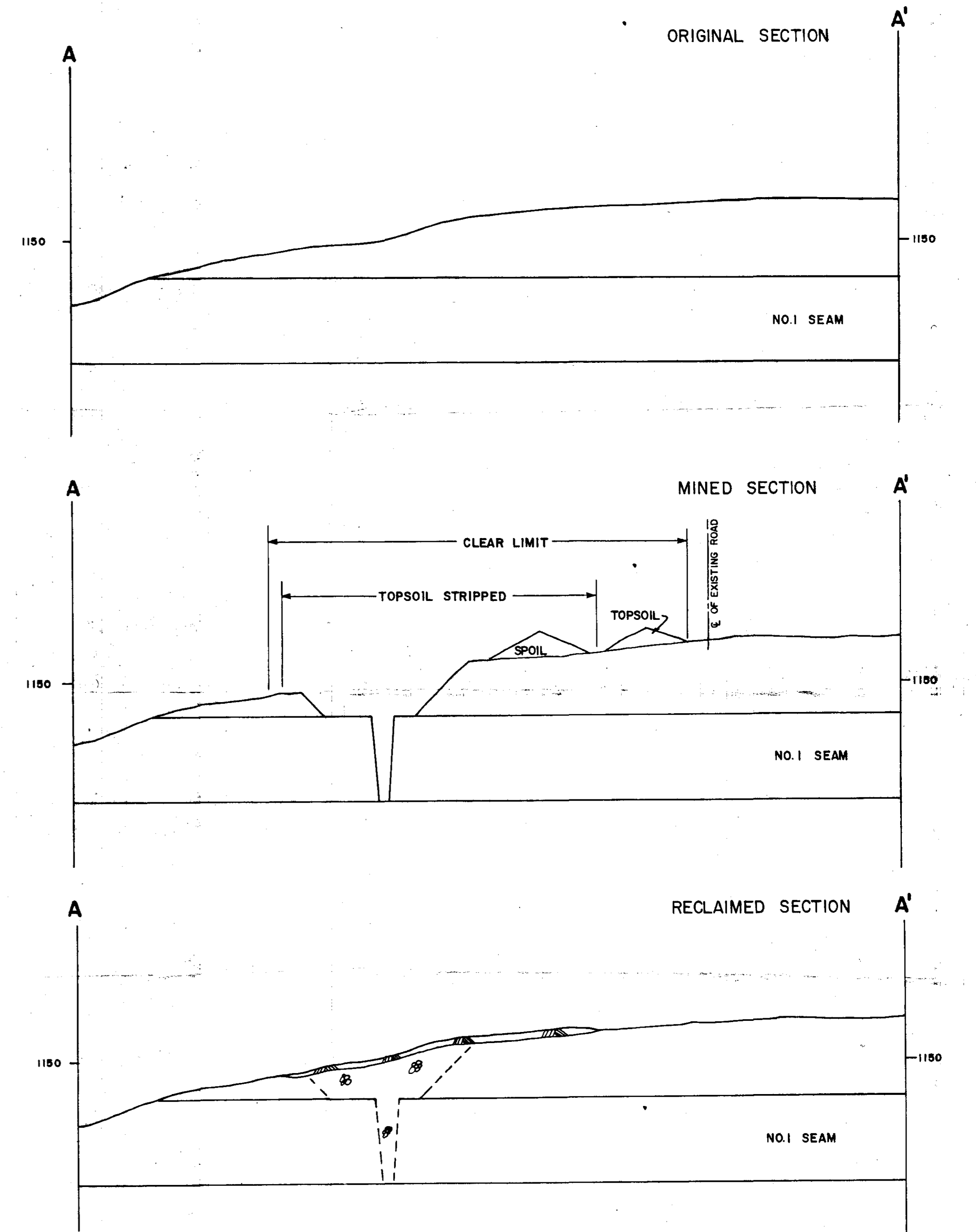
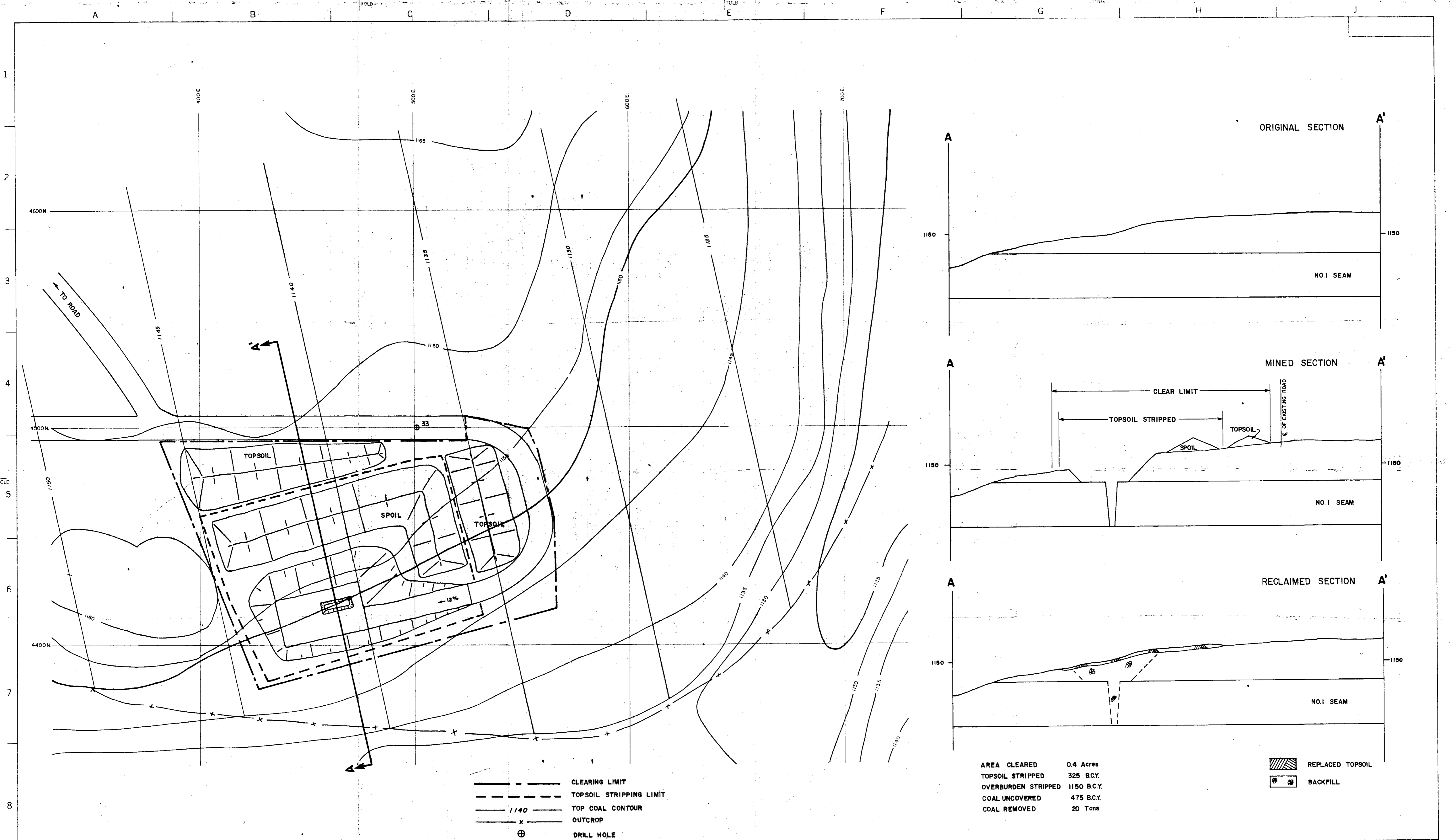
TO EAST SEE MAP 92 F/14 E

49° 45' 00" N
125° 30' 00" W

49° 45' 00" N
125° 15' 00" W

70 M7

70 M7



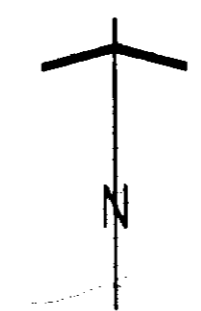
AREA CLEARED 0.4 Acres
 TOPSOIL STRIPPED 325 B.C.Y.
 OVERBURDEN STRIPPED 1150 B.C.Y.
 COAL UNCOVERED 475 B.C.Y.
 COAL REMOVED 20 Tons

REPLACED TOPSOIL
 BACKFILL

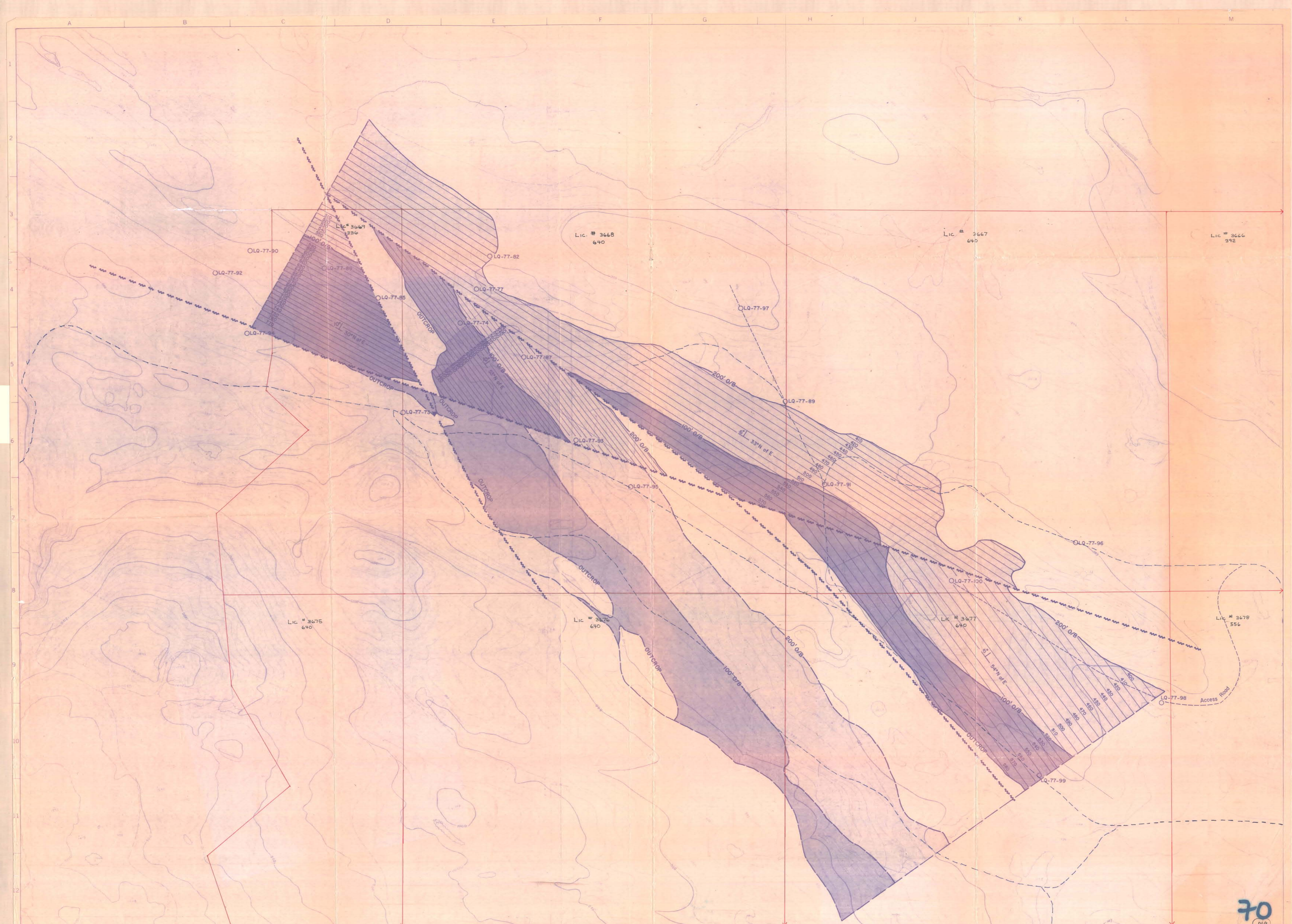
- - - - - CLEARING LIMIT
 - - - - - TOPSOIL STRIPPING LIMIT
 ——— 1140 TOP COAL CONTOUR
 ——— x ——— OUTCROP
 ⊕ DRILL HOLE

REFERENCE DRAWINGS	ISSUE	DATE	INITL	REVISIONS
SEE FIGURE 1 FOR SITE LOCATION.				

QUINSAM PROPERTY



SCALE 1" = 20'	TITLE	DRAWING NO.
DRAWN BY DATE	BULK SAMPLE SITE - No.1 SOUTH FIGURE 5 <i>cx-Quinsam 77(2)E</i>	
CHECKED		
APPROVED		
1st ISSUED		
	70 MS	ISSUE

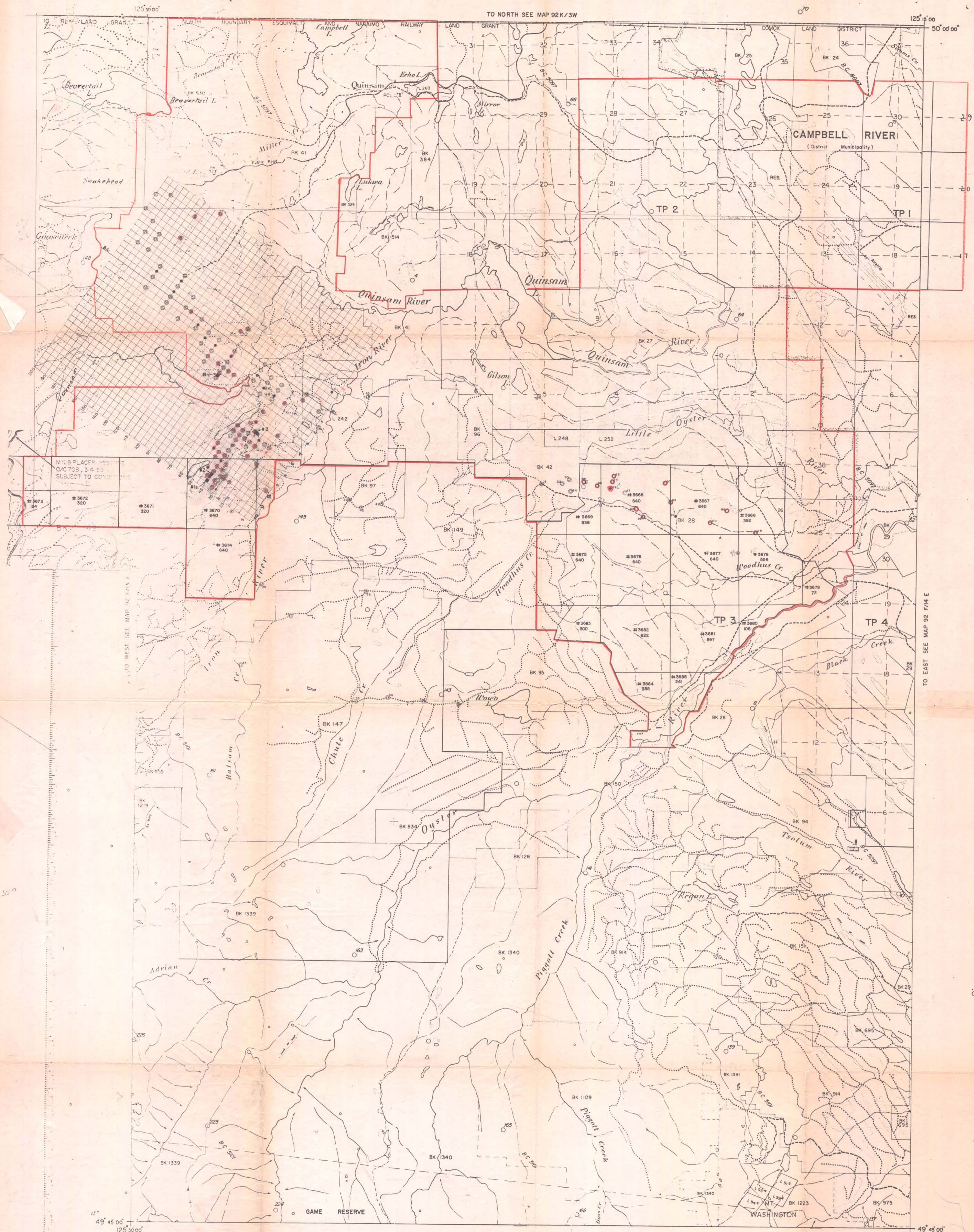


REFERENCE DRAWINGS	ISSUE DATE	INT'L	REVISIONS	ISSUE DATE	INT'L	REVISIONS

SCALE	400	0	400
BY	DATE		
DRAWN	R.V.	JULY 1977	
CHECKED			
APPROVED			
TR ISSUED			

TITLE
QUINSAM EAST COAL RESERVES
LOWER QUINSAM LAKE AREA
MAP 5
ex-Quinsam 77(2)E

DRAWING NO
70
 (M9)
 Q.S.G.031/...
 ISSUE



- International Boundary
- Provincial Boundary
- Mining Division Boundary
- City or Municipal Boundary
- Indian Reservation
- Surveyed Boundary
- Unsurveyed Boundary
- Mineral and Placer Reserve
- Ecological Reserve
- Park Boundary
- Recreation Area Boundary
- Railway
- Railway (abandoned)
- Highway
- Public Road
- Other Roads
- Trail, Truck, Logging Road
- License # 3456
- 72

DEPARTMENT OF MINES AND PETROLEUM RESOURCES
 VICTORIA B.C.
 SCALE 1/2 MILE = 1 INCH
 MINERAL TITLES REFERENCE MAP 92F/14W

This map is prepared only as a guide to the location of mineral claims and Placer Mining Leases as shown on the locator's sketches. For current or more specific information, application should be made to the Mining Division concerned.
 Map prepared by Kevin Townsend
 from Air Interim Map 92F/14W
 drawn from aerial photographs dated 1964

WELLDWOOD OF CANADA LIMITED
 1977
 QUINSAM AREA
 EXPLORATION PROGRAMME

Legend
 Core Hole ———— ● LICENCE - # 366
 Drill Hole ———— ○
 Test Pits ———— ■

70