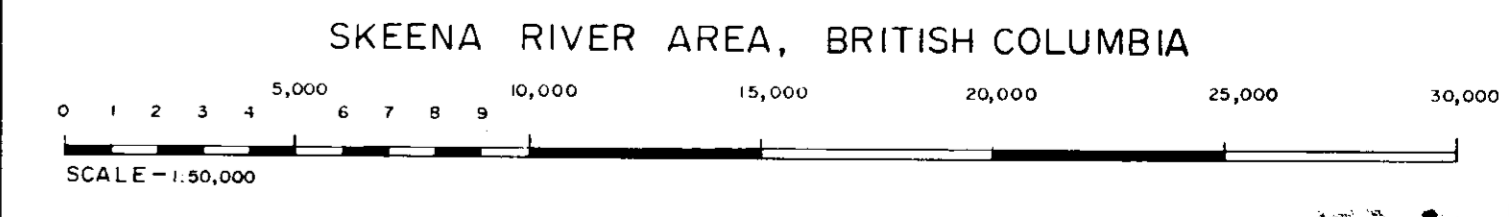


EXPLANATION

⊕ DDH No. 1 DIAMOND DRILL HOLE NO. 1

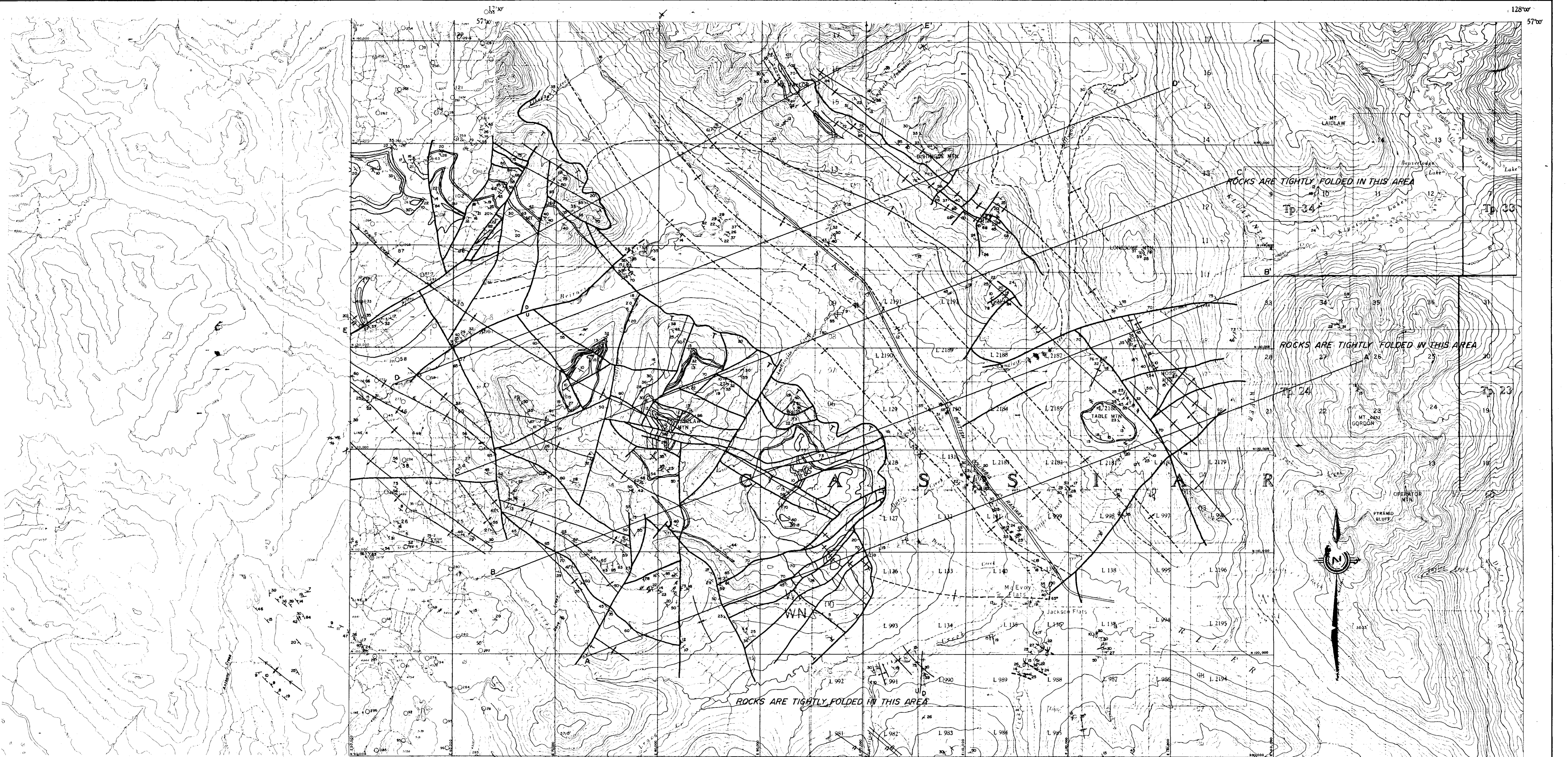
44 REFERENCE NUMBER OF COAL OCCURRENCE. NUMBER CORRELATES WITH TABLE III IN TEXT WHICH CONTAINS DETAILS OF COAL OCCURRENCE AND ANALYSIS.

B.C. HYDRO AND POWER AUTHORITY
GROUNDHOG COALFIELD
 TOPOGRAPHIC MAP
 SHOWING LOCATION OF DIAMOND DRILL HOLES
 AND SURFACE SAMPLES

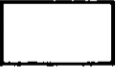
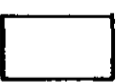
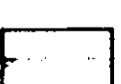
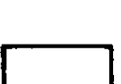
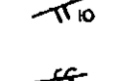
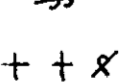
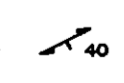
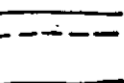

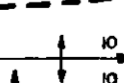
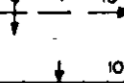
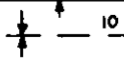
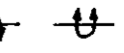



WILLARD D. TOMPSON, 1970
 (Revised 1977)

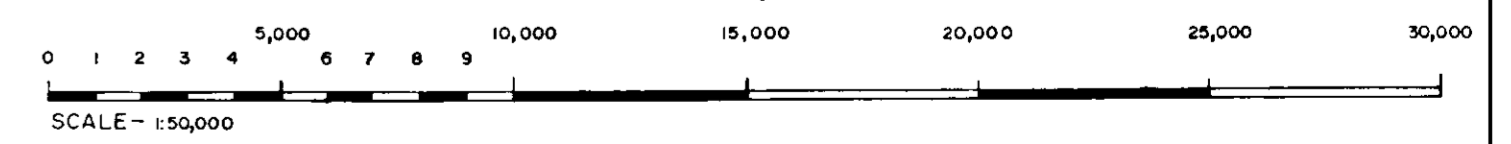
GR-GR 77(2) A. PLATE III



EXPLANATION

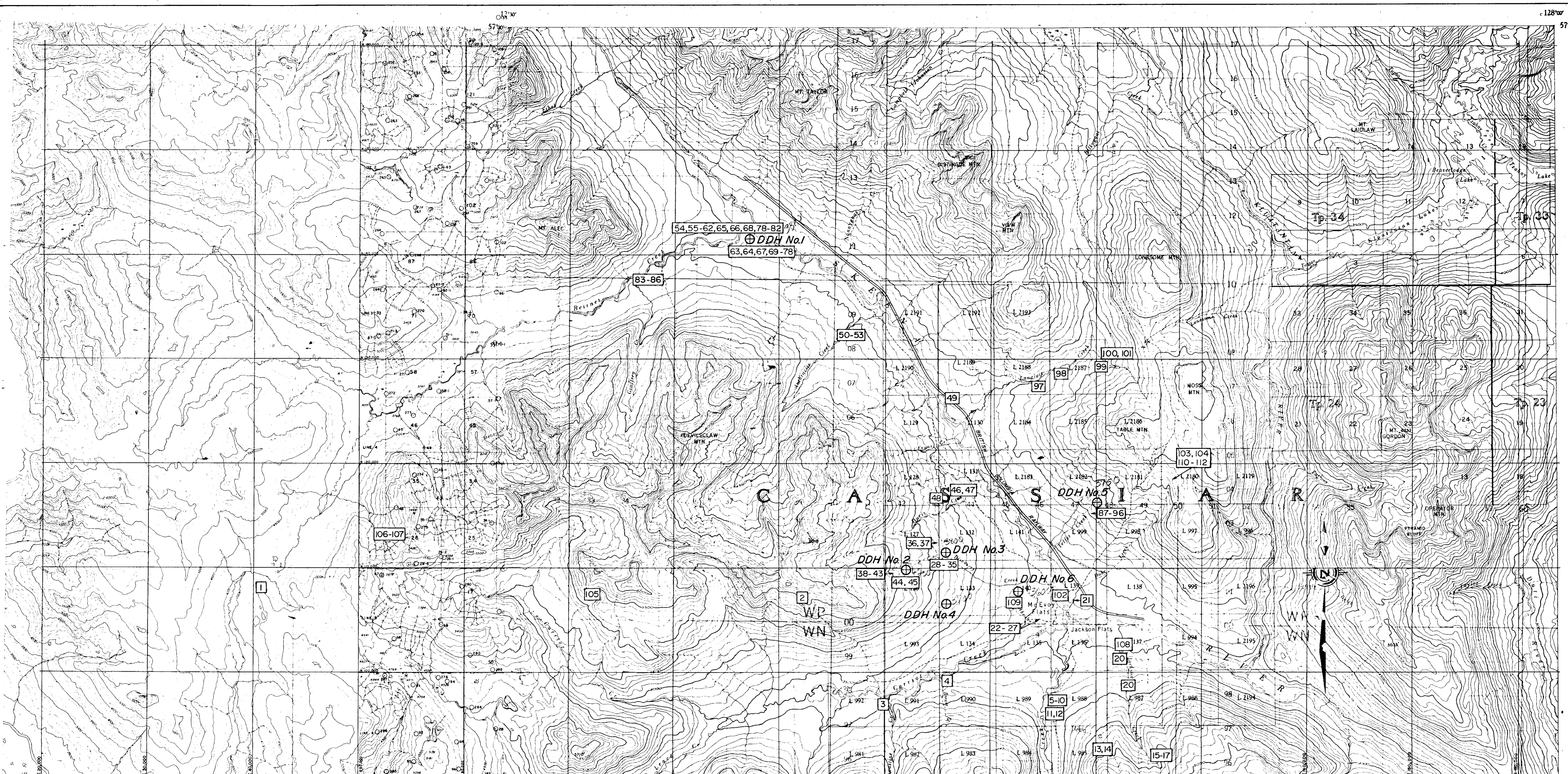
-  LONESOME MOUNTAIN LITHOSOME - SOMBRE BROWN COLORED, WELL INDURATED, SPARSLEY FOSSILIFEROUS, CONGLOMERATIC SANDSTONES, SANDSTONES, MUDSTONES AND THIN, RARE, DISCONTINUOUS COAL BEDS.
-  DEVILS CLAW CONGLOMERATE LITHOSOME - THICK BEDDED, COARSE GRAINED, CHERT PEBBLE CONGLOMERATE INTERBEDDED WITH MUDSTONE, SANDSTONE AND MINOR COAL.
-  COAL BEARING LITHOSOME - SOFT, MEDIUM TO THICK BEDDED MUDSTONES (70-75 PERCENT), CARBONACEOUS UNITS, (15 TO 20 PERCENT), AND GREY SANDSTONES (50 PERCENT) WEATHER BROWN TO ORANGE.
-  MCEVOY RIDGE LITHOSOME - DARK COLORED, WELL INDURATED MUDSTONES PREDOMINATE, WITH FINE GRAINED SANDSTONES AND SOME CARBONACEOUS MATTER, EVENLY BEDDED, 1 TO 5 FEET THICK.
-  STRIKE AND DIP OF COAL SEAM.
-  COAL IN PLACE, ATTITUDE UNKNOWN.
-  STRIKE AND DIP OF BEDDING; INCLINED, HORIZONTAL, VERTICAL, AND OVERTURNED.
-  STRIKE AND DIP OF JOINTS.
-  ROCK CONTACT, D' SHED WHERE COVERED OR INFERRED.
-  THRUST FAULT, 'T' ON UPPER PLATE.
-  FAULT, DASHED WHERE INFERRED OR OBSCURED.
-  STRIKE AND PLUNGE OF AXIS OF ANTICLINE, DASHED WHERE INFERRED.
-  STRIKE AND PLUNGE OF AXIS OF SYNCLINE, DASHED WHERE INFERRED.
-  OVERTAKEN ANTICLINE AND SYNCLINE RESPECTIVELY.

BC. HYDRO AND POWER AUTHORITY
 GROUNDHOG COALFIELD
 GEOLOGICAL MAP
 SKEENA RIVER AREA, BRITISH COLUMBIA



WILLARD D. TOMPSON, 1970
 (Revised 1977)

102
 103
 PLATE
 G.C. - GROUNDHOG 77(2)A



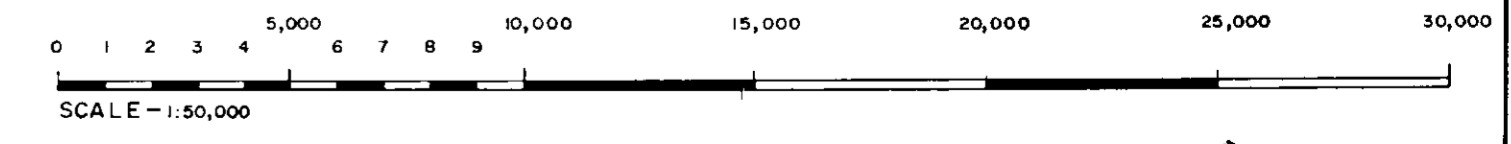
EXPLANATION

⊕ DDH No. 1 DIAMOND DRILL HOLE, NO. 1

44 REFERENCE NUMBER OF COAL OCCURRENCE NUMBER CORRELATES WITH TABLE III IN TEXT WHICH CONTAINS DETAILS OF COAL OCCURRENCE AND ANALYSIS.

B.C. HYDRO AND POWER AUTHORITY
GROUNDHOG COALFIELD
 TOPOGRAPHIC MAP
 SHOWING LOCATION OF DIAMOND DRILL HOLES
 AND SURFACE SAMPLES

SKEENA RIVER AREA, BRITISH COLUMBIA



WILLARD D. TOMPSON, 1970
(Revised 1977)

100
 62-56-2040-2 PLATE III