

HC-HAT CREEK 25(2) B

HAT CREEK COALFIELD
(MAPS)

00119

J.J. BERGIN

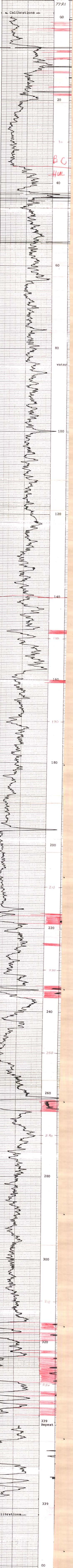
AUGUST 1925

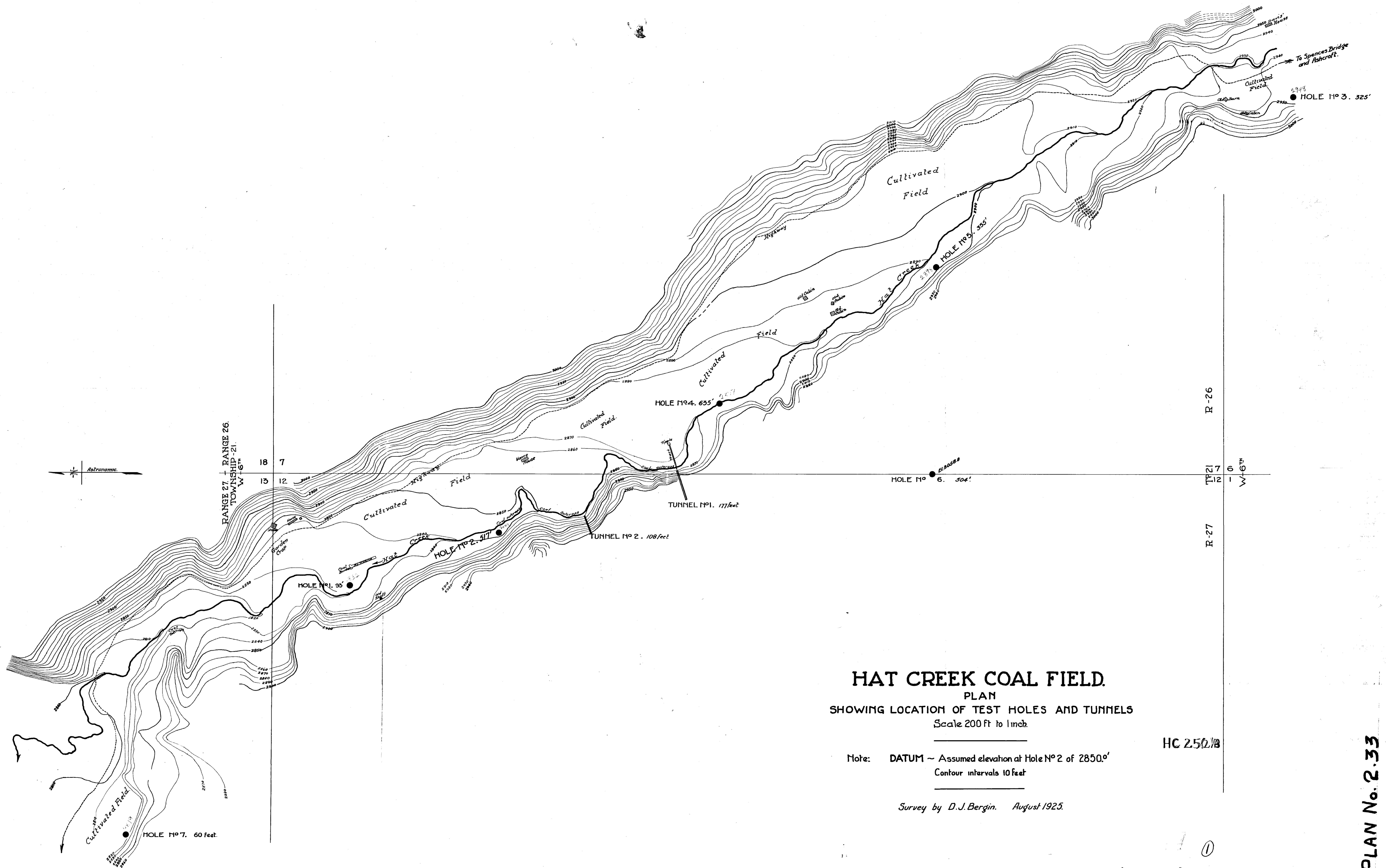
611

240	4.1
210	4.7
180	4.5
150	4.9
120	5.1
90	5.2
60	5.7
30	5.9

Note: H

①





HAT CREEK COAL FIELD.

PLAN

SHOWING LOCATION OF TEST HOLES AND TUNNELS

Scale 200 ft to 1 inch.

Note: DATUM ~ Assumed elevation at Hole No. 2 of 2850.0'
Contour intervals 10 feet

Survey by D.J. Bergin. August 1925.

HC 250.18

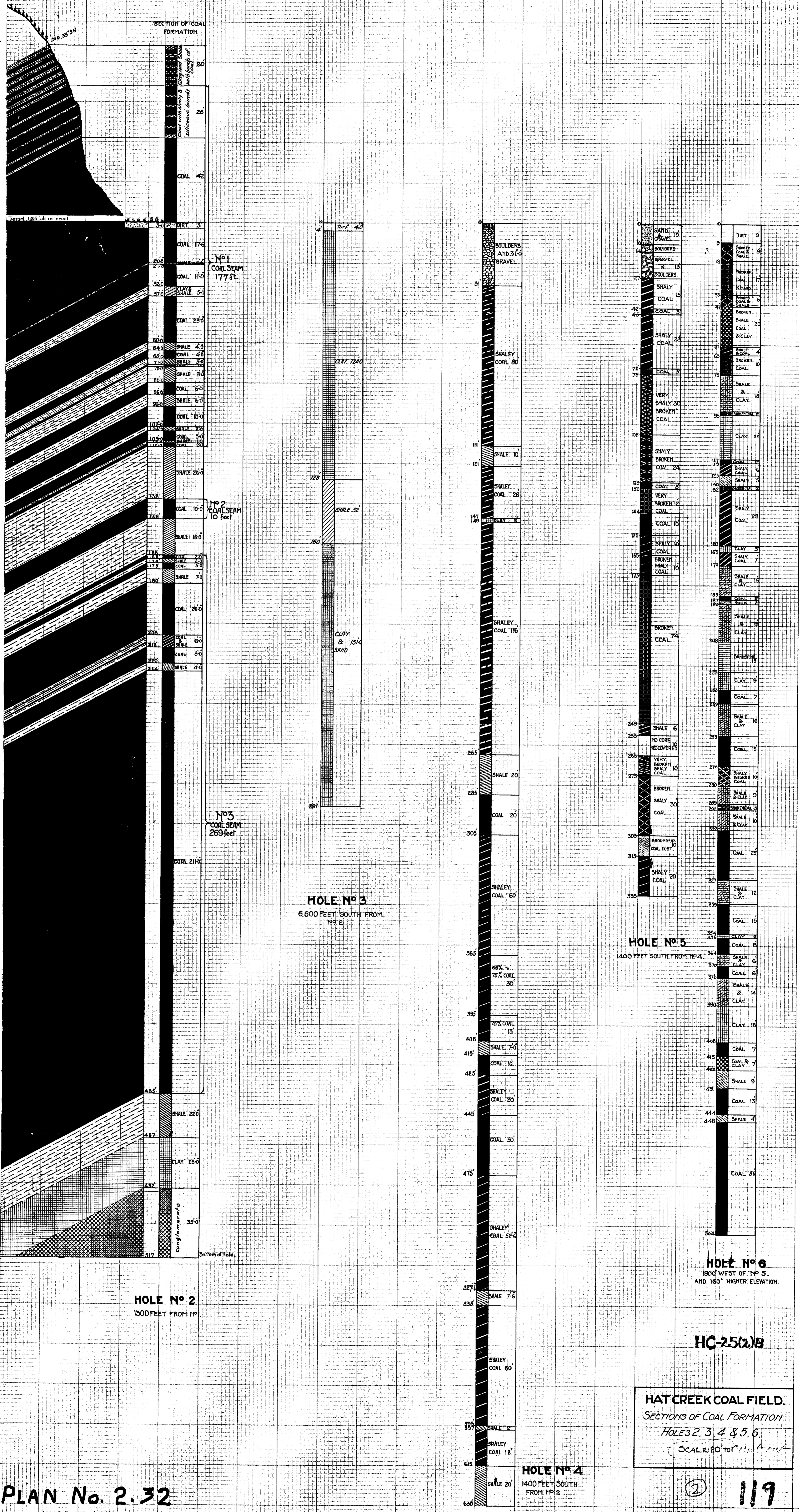
Department of Railways Sept. 4th 1925.

PLAN No. 2.33

PLAN No. 2.33

To Pavilion

KK



16'

119