

Lat:

Bear:

Dep:

Slope:

Q Elev: River bed. Length:

Quartz A

Mass of rock about 20' x 60' in center of river bed -

Appears to be agglomerate - some large fine gr. patches (boulders?) with rich fragmental pebbles to 1 1/2"

Volcanic?

West Fork River

Quartz B

Measured on Top of ...

Soft grey shale

5+

Coal shale and coal.

1.0

Sandstone

4.0

Coal shale and coal stringers up to 2"
Sd N 10° W dip 20° SW

2.0

Clayey shale (

2.5

Coal.

0.2

Clayey shale

8+

Covered - approx

20'

Be to + clay

2

184

Lat:

Bear:

Dep:

Slope:

Elev: West Lake River - length: abt 100' abo. water.

Outcrop C

Jan. 22, 1923

Coal sec. outcrops along about 100'

3. 150' down

Slab - ? cont. of old bituminous

clay.

3' +

Coal - rather shaly.

3

Sandstone

1'

Coal looks fair quality

{ str N-S
dip 5° W

4'

Slab

1'

Sandstone - fine gr.

1.5'

Sandy slab - Fairforders

5' +

Several sandstone layers occur

below for next 40'. Maybe

sandstone beds in sandy shale.

184

Lat:

Bear:

Dep:

Slope:

Elev: East Bank of River

Length:

Outcrop D

Regular strata - seen from top down

Clayey shale - light colored, with
many irregular coal lenses

25

Grey sandstone

9½'

Carbonaceous shale & Coal

Coal - solid black stringy amber
yellowish powdery material on
surface.

1'

Soft sandstone

6'

Coaly shale

2½'

~~Clayey~~ shale
sandy

1½'

Shale & Coal

Coal narrow beds of conchoidal
fracturing. Bottom 6" yellowish
powder like preceding.

2'

Sandy shale

1'

Banded Coaly shale

2'

Creamy & carb. banded sandy shale

8'

Grey shale

6'

Light grey shale

7'

2

Cont.

184

Lat:

Bear:

Dep:

Slope:

Elev:

Length:

Outcrop D (cont)

Line grained light grey sandstone

8'

Strike N 45° E

Dip 30° SE

Grey banded shale

15'

Light grey sandstone - shaley partings
some coal fragments

10'

St. - N 65° E - Dip 40° SE

Thin bedded grey sandstone

5' +

Coal? - Black carb shale
(see for name on map)

15'

Coarse sh - fine - ls seg.

3'

Grey shale -

10'

Grey shale - St - N 55 E - Dip 23° SE

25'

Covered

15'

Thin bedded brown carbonaceous shale
very fissile

8'

Shale & coal

2'

Coal - slaty and weathered
Strike - N 80° W - Dip 14° SW

9'

ROM: 45 30
 65 40
 Avg. 55 23
 110 14
 115 17
 069/29

184

Lat:

Bear:

Dep:

Slope:

Elev:

West bank

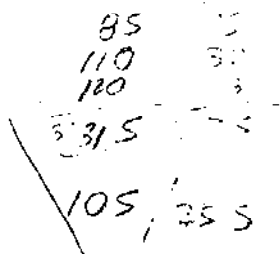
Length:

Outcrop E

{ N 85° E
15° SE

MM 27

Coal - this seam probably 50' beneath lower seam outcrop D	5'
Light grey shale - some sandy lenses.	14'
Coal - looks fair	5'
Shale	1'
Sandstone	3-5'
Shale & coal	35'
Light grey shale	3'
Sandstone St: S70°E - Dip 32° S.W.	3'
Shale & coal	2'
Shale - partly covered	3'
Coarse sandstone	2'
Sandy clay	1'
Coarse sandstone - light grey to buff.	40'?
Conglomerate - g. int. - large pebbles. St - N 60° W - Dip 23° SW	12'
Covered	40'
Coal and clay mixed and structureless boundaries covered	3'



184

Lat:

Bear:

Dep:

Slope:

Elev: West Bank

Length:

Tunnel F

Sandy shale	6'
Shale	2 1/2'
Coal - looks fair	4'
Coaly shale	4'
This section probably lies a short distance below sandstone of E.	
Strike N 70°W - Dip 22°SW	

16 1/2'

Outcrop G

West bank of River - at water line.

Sandy shale - may plot fossils - carb.	4'
Red quartzite & gneiss	3'
Coal	1 1/2'
Sandstone - fossil	10'

Follows water line for about 1/2 mile.
 gently undulating surface - N 35°W
 dip - 15°SW

184

Lat:

Bear:

Outcrop Co.

Dep:

Slope:

Plant Fossils

Elev:

Length:

Outcrop

- 1) Along Talon Road west of town 1/2 mile
- 2) Along road post station.

Outcrop - G. Plant Fossils



leaf.



Cone.



predominantly ferns.
a few stems of
moss or leaf fragments.

Probably paleocene to middle eocene. say W. H. Matthews.



Lat:

Bear:

Dep:

Slope:

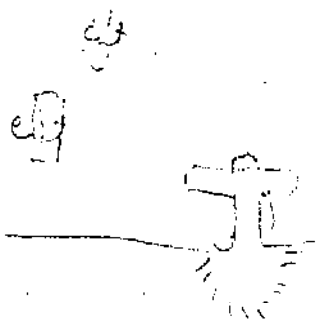
Elev:

Length:

Tunnel H.

Several open cuts on steep hill by flat
with short tunnel at back level to cut sea

BM 311



From top level on hill down

Grey sandy shale with coal streaks	3'
------------------------------------	----

Coal - sandy bands - poor	5'
---------------------------	----

Carbonaceous shale	2'
--------------------	----

workings recent.
Strike $-N70^{\circ}W$ Dip $-45^{\circ}SW$

Tunnel about 100 yds from mine at
200 ft from Benby Creek.

184

Lat:

Bear:

Dep:

Slope:

Elev:

East 6-6 of ~~Pit~~: Measuring up.

Outcrop F

Medium conglomerate	13'+
Coal & shale	1 1/2'
Carbonaceous shale - thin coal seams	5'
Strike N75°W - Dip - 20°N	
Medium conglomerate	7'
Grey shale with coal stringers	5'
Coal	1 1/2'
Sandstone	2'
Carboniferous shale with coal stringers	2'
Coal	3'
Mostly coarse conglom. some sandstone <small>grey to buff</small>	50'
Grey shale	2 1/2'
Coal - probably some shaley beds that are covered	7 1/2'
Probably mostly sandstone covered.	95'
Shale with some coal stringers	3'
Fine quartz conglom.	15'
Strike N70°E - Dip 40°NW.	
Shale	3'
Carbonaceous shale some coal	5'
Light grey shale	2'
Carbonaceous shale	7'
Covered - probably shale	15'
Carbonaceous shale	1'
Shale	4'
Coal	3'
Shale - iron stone bands	6'

3M 320

184

Lat:

Bear:

Dep:

Slope:

Elev:

Length:

Outeroy T (cont.)

Coal - several sandstone bands - fair	7'
Shale	1'
Bentonite	$\frac{1}{2}$ '
Coal & shale	2 $\frac{1}{2}$ '
Shale with coal stringers.	11'
Coal lens	5'
Sandstone	7'
Shale	5'
Coal & shale	3'
Coarse sandstone.	30'

184

Lat:

Bear:

Dep:

Slope:

Elev:

Length:

Outcrop J

Greenish sandstone - rusty and
some black near water level.

35'

BM-312

Layer

Coarse detrital conglomerate in matrix
Has iron ~~stone~~ petrified wood etc.

10'

Strike N 75 E. Dip 30° NW

Above sandstone is following approx
sequence ascending up.

Slab - light grey

5'

Red, sandstone

1'

Clayey shale -

15' +

184

Lat:

Bear:

Dep:

Slope:

Elev:

Peto Mati Length: Well 26 P.M.

Outcrop K

51' 100'

Shale - soft clayey	10'
Coal - fair quality	7'
Shale - white soft	1.5'
Coal	2'
Shale -	4'
Coal -	6'
Coal & shale	3'
Coal	2'
Shale with carbonaceous streaks	2'
Shale & coal	1'
Shale with sandstone lenses	2'
Coal with shaly bands	2'
S1 N 85° E Dip 25° S	
Shale	1'
Coal	6"
Sandy shale <small>this bed varies from 1'-5' and from sandy shale to medium sandstone with coal fossils</small>	1 1/4'
Coal	6'
Shale with coal stringers and intrusions	1'
Coal	3 1/2'
Sandstone	2'

184

Lat:

Bear:

Dep:

Slope:

Elev:

Length:

Outcrop K (cont)

Coal & shale	8"
Soft clayey shale	3'
Coal	1'+
Thin coal seam parallel, 3' D.L.	
Med gr sandstone - approx strikes not continuous outcrop, but about 75%	60'
Covered approx 30'	
Sandstone - med gr fine gr sandy	30'+

Note

From Outcrop K to ~~Outcrop J~~ no
large outcrops - a few sandstone outcrops but
may not represent great strikes as strike about
parallel river.


184

Lat:

Bear:

Dep:

Slope:

Elev: Rail.

Length:

Along (a)

Outcrop bench only shale and white
 chine clay (shale) of ^(Bentails) ~~semi-bedded~~
 appearance. Strike beds N40°E dip, 35°SE
 23' at 25' - 25' exposed.

Along 2

about 1/10 mile past (a)

Outcrop (b)

nearby down

0 - 6

Carbonaceous & clay shale - very brown and

BM-353

14

Clayey shale - badly decomposed

17

Lignite

18 1/2

Dark brown shale

20 1/2

Sandstone & carb shale - bedded.

25 1/2

Lignite with beds of shale beds

27

Clayey shale with trapped fossils

29 1/2

Cgl shale lenses

30

Brown sandy shale

31 1/2

Lignite shale

{ N45°E
35°SE

34 1/2

Sandstone - some shale beds

35

Shale

184

Lat:

Bear:

Dep:

Slope:

Elev:

Railway

Length:

(b) cont

35-36 1/2	Lignite	1 1/2'
37 1/2	Sandstone	1'
39	Carbonate - some fossiliferous	1 1/2'
41	Lignite	2'
43	Carbon. sandy shale	2'
45	Lignite carb shale	2'
46	Coarse grey sandstone	1'
49 1/2	Fine gr. sandstone	2 1/2'
52 1/2	Chal -	3'
53	Basalts	11 1/2'
54 1/2	Cal & carb shale	1 1/2'
	{ N 45° E 35° S E	
57 1/2	Fine gr. sandstone with many pebbles - shaly	3'
64 1/2	Coarse sandstone - some fossiliferous	10 1/4'

184

Lat:

Bear:

Dép:

Slope:

Elev:

Railway

Length:

M 6.95

October 1900

Beeds here don't seem to be of any value

184

0-10

Thin shales with some fossils
fossils of plants & animals

10'

15

Thin shales with some fossils

5'

19

Sandy shales

{ strike 100°
dip 35°N

4'

21 1/2

Limestone

2 1/2'

22 1/2

Coal shale

1'

24

Coarse grained shale

1 1/2'

30

Thin bedded shales with some fossils
much plant fossils

2'

35

Soft grey sandy shales

5'

36

Coal shale - coal

1'

61

Coarse clayey shale - sandy

25'

Beeds seen to be turned over at
top of flinty dip - bedding to steep

184

Lat:

Bear:

Dep:

Slope:

Elev: Railway

Length: 16.3 - at 2 in.

Recon (O)

	Down for top down	
0-6	Coarse sandstone	6'
10	Grey sandy shale	4'
11	Coal with yellow shaly part	1'
14	Coal shale - thin bedded	3'
15	Coal shale with yellow spots	1'
18	Sand shale with coal part	3'
21	Coarse grey sandstone	3'
27	Grey sandy shale	6'
28	Ruddy sandstone	1'
35	Soft green clay & sandstone	7'
38	Grey to brown carb shale	3'
40	Soft shale	2'
48	Thin bedded shale & sandstone approx 40% thin coal seams	8'

Some shaly part of bed see sketch

N 50° E
25° SE

~~184~~
184

Lat:

Hour:

Dep:

Slope:

Elev: Railway:

Length: By P. ...

...

Beds of ... - strike ... E-W
dip 50° to north - ... down

0-5	2' ... coal ...	5'
6	White ...	1'
11	Big coarse ...	3' 27"
17	Substr. ... coal ...	6'
19	Thin ...	2'
21	Bedded coarse ...	2'
23	Coarse ...	2'
43	Coal shale ...	10'
49	Coarse ...	6'

Ab. + 8' of coarse conglomerate
with many pebbles sharp ...
with quartz pebbles, ...
com. Strike EW dip 25° N

appears to be ... coal shale
at base ... beds ...
just ...

...

184

Lat:

Bear:

Dep:

Slope:

Elev: Railway.

Length: 1/2 mile.

RR 009

Buff middle fine sandstone with some
coal fragments - esp in lower part.
Strike 105° - dip 25° N

at 30' strat.

upper part has slight green color and
less sandy than below.

About 20 ft of brown sandstone
with some def beds at top but lower
part massive with many tree-trunks
of large fossils - very shaly with shales
at carbon.

beds { 55° E
 { 13° SW

Q. 10 p 2

184

Lat:

Bear:

Dep:

Slope:

Elev:

Railway

Length: 135 ft

RR (h)

As the outcrops dip east dip later (west)
down

0

Fine conglomerate - pebbles mostly quartz
sh. sand all fine. large pebbles
at 7m depth 2 cm.

8

8'

8 1/2

light to

1/2'

13 1/2

Grey sandy shale

5'

16 1/2

Reddish sandy carb shale

3'

18

Light to

{ 565° E
30° NE

1 1/2'

33

Soft yellowish clayey shale

5'

57

Covered

24'

58

Compacted sandstone (broken up)

1'

68

Yellowish clayey shale

10'

71

Grey sandstone - rusty

3'

75

Yellowish clayey shale

4'

79

Reddish sandy shale carb shale side
(sandy) shale

4'

81 1/2

Grey sandy shale

2 1/2'

83

Clay - sandy partings - rusty

1 1/2'

184

Lat:

Bear:

Dep:

Slope:

Elev:

Railway.

Length:

1/2 (1) unit.

83-92	Soft grey sandstone.	9'
93	Brown carb. shale - fossil	11'
98	Soft sandstone	5'
100	Sandy shale	2'
101 1/2	Sandy carb. shale	1 1/2'
104 1/2	Fire gn. sandstone	3'
110 1/2	Soft clay sandstone	6'
116 1/2	Sandy clay	6'±

Some very sandy sandstone may be under
but possible of slump.

Strike S 80° E }
Dip 35° NE }

184

Loc:

Loc:

Dep:

Slope:

Elev:

Railway

Length:

RR 1/2

(J)

Upper bed of 2 1/2' temp. parting - 1/2' in bed.
 below no. 10 of 10 temp. (10)
 near base.

0 - 3	Coal	3'
4 1/2	Shale - grey clay	1 1/2'
9 1/2	Sandstone	5'
11 1/2	Coal shale and coal seams	2'
17 1/2	Lignite	6'
20 1/2	Shale	3'
23 1/2	Sandstone	3'
25 1/2	Coal shale and coal seams	2'
37 1/2	Sandstone - some thin coal seams in cuts - heavy	12'
39 1/2	Interbedded coal shale (and) and sandstone	2'
42	Lignite	2 1/2'
47	Coal shale and some coal - sandstone beds	5'
50	Coarse grey sandstone	3'
56	Coal shale, lignite and sandstone with beds under 1/2'	6' +

184

Lat:

Bear:

Dep:

Slope:

Elev:

Railway

Length:

RR 1/2 (R)

9 am down

0-10	Soft clayey shale -	10'
17	Hard sandstone { R6WE ? 13° SE	7'
32	Soft clayey, poorly consol. sandstone	15'
47	Congl. shale - pebbles variable, but mostly quartz. Rocks are patib. of yellow porous weathering - many open	15' +
72	Soft clayey poorly consol. shale or - rusty bands - beddy shale flat	25'

184

Lat:

Bear:

Dep:

Slope:

Elev:

Railway

Length:

4/2

Some soil may be very much flatter
than my back - many down.

0 - 5

Soft soil - shale 2 (coarse)

5'

12

Grey shale

7'

14

Shale

Strike N 65° E
Dip 8° SE

2'

16

Shale - banded

2'

17

Light shale

1'

32

Coarse weathered conglomerate and
sandstone - some small pebbles

13'+

184

Lat:

Bear:

Dep:

Slope:

Elev:

Railway

Length:

1/6 (2)

Subs. shale coal at $N65^{\circ}E - 10^{\circ}SE$
 dipping down

0 - 6	conglomerate	6'
10 1/2	Lignite - brown	4 1/2'
13 1/2	Coarse, bedded clay shale	3'
17 1/2	Shale - reddish	4'
19 1/2	Lignite	2'
21 1/2	Shale	2'
24 1/2	Lignite - shale - 50-50	3'
28 1/2	Grey shale	4'
30	Reddish brown with shale, etc.	1/2 + 2'
37	Lignite - looks fairly clean	7'
42	Coarse grey sandstone	5'
43	Lignite	1 1/2'

184

Lat:

Bear:

Dep:

Slope:

Elev:

R R.

Length:

76 60

<u>Measurements</u>		
0-17	Concretion - probably 3 E. Stone sandstone and some coal str.	17'
24	Argillite - Sandstone { Siliceous quality { dip 15° S	7'
26	Lignite - light color - shale	2'
32	Sandstone with coal str.	6'
35	Bedded shale sandstone	3'
36	Coal shale - coal	1'
39	Sand - sandy shale with ironstone beds and nodules.	3'
39 1/2	Coal shale - coal.	1/2'
49 1/2	Soft grey poorly consolidated sandstone	10'
51 1/2	Lignite	2'
52 1/2	Shale -	1'
55 1/2	Lignite	3'
57	Sandstone and coal str.	{ N60°E 25°SE 1 1/2'
67	Sandstone - coarse	10'
72	Coal and shale	5'
79	Shale with coal str.	7'



Lat:

Bear:


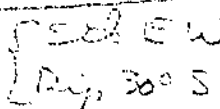
Dep:

Slope:

Elev:

Length:

1/2 (20) cont

79 ¹ / ₂ - 80	Sandy shale & coal	1'
88	Soft clayey sandstone - green shale	8'
89 ¹ / ₂	Conglomerate	1 1/2'
92 ¹ / ₂	Sandstone & coal ss., 40-60	3'
94 ¹ / ₂	Coarse sandstone - shaly - 15' 	5 1/2'
99 ¹ / ₂	Sandy shale with much carb. material	5'
129 ¹ / ₂	Coarse sandstone (conglomerate) with many shales - blue shales	30'
131 ¹ / ₂	Shale & lignite	2'
133 ¹ / ₂	Grey sandy clay	2'
135	Shale & lignite	1 1/2'
142	Sandy shale & coal	7'
152	Sandstone - with much coal & conglomerate - Rather coarse	10'
154	Lignite - shaly	2'
	 50° E W Dip 30° S	
157	Grey shale - sandy at bottom	3'
160	Grey shale & lignite beds	3'
177	Sandstone	17'
183	Lignite - carb. shale	6'
195	Sandstone	12'
203	Coal - shaly beds	17'

184

Lat:

Bear:

Dep:

Slope:

Elev:

KV - 20' above base - layer top of Tul. Col.

Railway Outcrop

Length:

100-110

0-100

About 100 ft of red-banded coal series of shale, some sandstone and limestone and no coal str. No unit is over 3' in thickness.

100-110

Looks like main outcrop of seam. Partly banded, but looks fair. Strike N-E by dip 13° SE - at NW end of outcrop dip is steeper, with about 20%.

Above is 10 to 15' shale support.

at westerly end, slope of bed is 25° S

184

Lat:

Bear:

Dep:

Slope:

Elev: 3100

Length:

ab. 1/2 way up side of drain of Finley Creek - North side (Finley Creek)

Outcrop Finley Creek

Beds N 14° E
dip 47° SE

Coarse conglomerate - mostly quartz -
sandy matrix - some fine pebbles.

Has sandy bands but essentially conglomerate
with pebbles to 3/4"

Another dip near base also. 20°
dip 50° SE

Total thickness of bed is at least
77 ft.

about 500' N 25° W along contour

Reddyto surface cuts showing shale and
out coal seam. Sth NS dip 30° E Elev 3100
Not steep cuts - poor road. 6' exposed

C. N 10° W down across hillside for 300'
to portal of Jackson Mine.

JN-161

Jackson seam outcrop - about 6' of
shale above main seam.

Corner point above Jackson Mine

L86

L835

385

L1H5, N.W. 1H7

BT 765

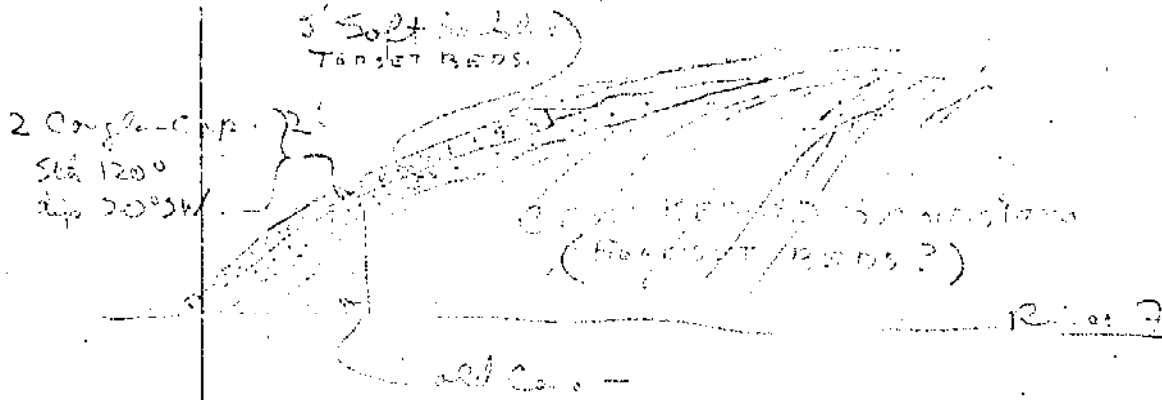
BT 767

Bear, true old 40'

184

Lat: Bear:
Dep: 100 yds SW Slope: Slat -
Elev: (old car) Length: .

Road Outcrop



Cross bedded sands (to well bedded -
Has a total thickness of at least 40' along

184

Lat:

Bear:

Road

Dep:

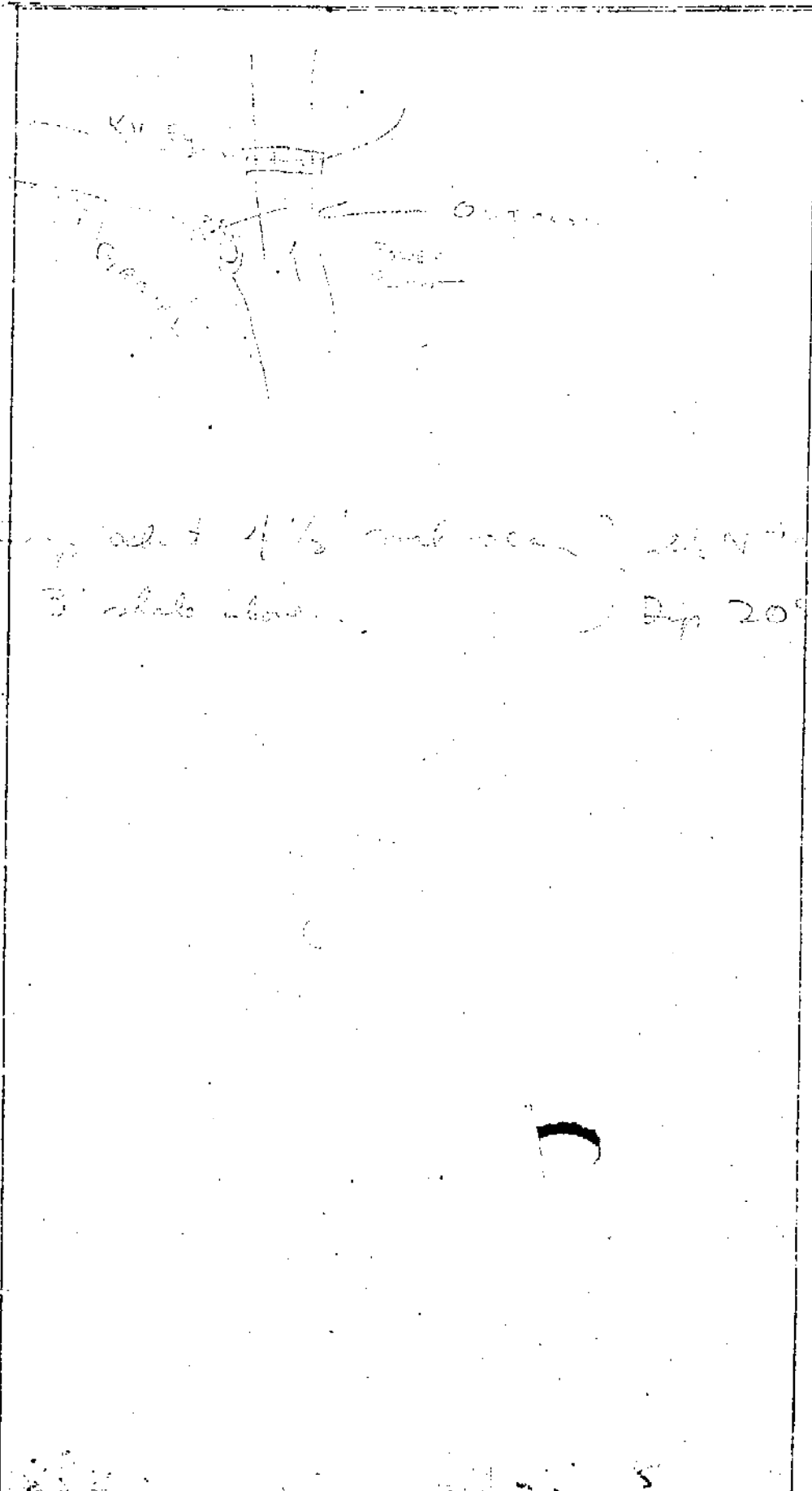
corner of Road near Power Plant Bridge:

Slope:

~~Auto~~

Elev:

Length:



113

Outcrop of 4 1/2' sandstone dip N 70° E
 3' shale below dip 20° SE

184

Lat:

Dep:

Elev:

Bear:

Slope:

Length:

K.V. (Copper Mt.)

Rail Camp

East - 100 yds from bottom

BM-267

0 - 5	Reveal coal in surface thin bedded coal	Gen. sec.?	5'
10	Sandstone		5'
12 1/2	Coal - thin bedded	(dip N 10° E)	2 1/2'
23 1/2	Shale - sandstone (concretions)	(dip 50° SE)	
27 1/2	fine pebbly conglomerate		11'
28 1/2	Coal		4'
31 1/2	Sandstone		1'
34 1/2	Shale		3'
35	Coal		3'
			0.5'
37	Sandstone		2'
38	Coal		1'
41	Sandstone		3'
43 1/2	Coal - rather thin bedded (surface)		2 1/2'

Can follow above fault - also, rather for
2000 ft. bed feet. At cut, at 80° dip 25° S

184

Lat: Bear:
Dep: across PH. Slope: 7 miles
Elev: 2260 Length:

Kettle Valley - (Copperton)

Railway outcrop

Series described on last page follows
same as last page. At this point,
there is about 20' of medium conglomerate
with quartz pebbles. The sandstone
thin bedded in part. In part medium bedded
bedded primarily - at 5 feet

ft - 252
250

cont. up track to M 1.15, road
found. In dropped just above track level.
Strike is E.W. - about parallel to the
outcrop of track (1.00 to 1.15.) dip not in
at 100 ft

Below coal fraction is a series of bed
25 ft of conglomerate with large boulders
more sandy on weathered face. - spheroidal weathering

184

Lat:

Bear:

Dep:

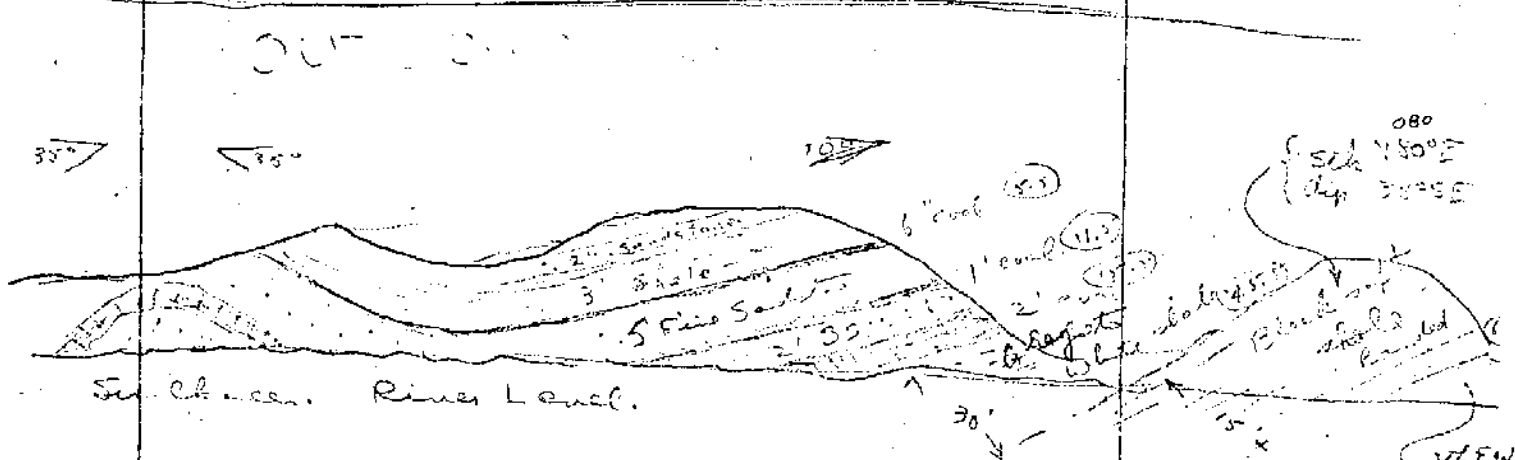
Slope:

Elev:

Length:

Outcrop
Alley Pa. phos.

Outcrop of sec of 1 ft or so visible
across river. Reported to cross river to
Pap House camp. (Sth N 10° W dip 20° SW) → ?



Section along west side of river 500' north of power line

Continuing down stream from above outcrop on west bank
nearby 120 ft soft grey shale with little bedding visible

Slaty sandstone - spheroidal weathering	3'
Sandstone - Hard	2'
Black carb shale	3'
Grey sandy shale - some carb. banding + rusty beds	15'
Grey muddy shale - light grey	15'
Bentonite	1'
Dark grey shale	10'

No outcrop for several hundred ft

184

Lat:

Bear:

Dep:

Slope:

Elev:

Length:

coll. by P. pl...

Core down stream north 6-6 of Pine -

Covered area - at bottom strata

125'

Greenish tuffaceous sandy rock - may be
alkaline sandstone - bit of soft. Occas. qtz
fr. some pebbles - like some red sand
quartz crystals seen. Some coal inclusions

15'

Beyond this are large pieces of angular boulders
of coarse, cross bedded sandstone with some
parts apparently conglomerate (1/4" pebbles) which
has one from its hill above - prob represent
in part at least the covered section at top of
D. sheet.

River swings the bearing of S 80° E here.
for several hundred yards - Pools below
outcrop of 5' coal seam at water level
on south side (no)

Enough sandstone near 25' + of greenish
tuffaceous rock. Lens of coal conglomerate
occurs about 15' x 1' Many fragments of coal
occur in greenish rock. Found in strata with
river dips south. Note the outcrop is
across river from Pale Martin place

(see prev. note)

Green
Shale
Black
Shale

Soft gray
Shale

Shaly
Sandstone

Sb
Sand
Sh

Thickness
(approx)
no outcrop
S.S.?

Green Sand.

Coal Conglomerate
Green Sand.

Coal
Seam

(see note)

184

Lat: In Sulphur River Valley, Below prospects
Dep: Cabin on Free place - Pete Martin.
Elev: Lat 45° N:

Quartz
Outcrops

Strike S 84° E } Approx 40' of coal measured by
Slope 24° SW. }
BM 317
crossed
at
P.M. ±

184

Lat: About SE or Bear: Lot 124
 Dep: East Side Sim... Slope:
 Elev: ... Length:

...
 ...

Considerable folding & fault, in these
 masses from bottom up ...

MM-14)

Mixed colored granite - very good - { 115°
 50° NE } 1/2

150

Brown weather bedded sandstone -
 about 12'

Sandy clay - ^{splendid weather} with ^{150°}
 shales (dip 50° NE) 10'

150

Brown weather sandstone 15'

Dark sand bedded with shales &
 sandstone - poor { 20° E
 50° NE } 3'

150

Shale - ? poor exposure 10'

Sandstone 3'

Shale 6'

Sandstone
 top 6' +

184

North side Talamee R. - on ridge

Lat:

Bear:

D at 80° from

Talamee R. side

Dep:

Slope:

Male #1

Loc # 2

Elev: 2470

Length:

0 - 100

Co. met.

100 - 140

May be liney schist or volcanic ash.

140 - 155

Crystalline schist volcanic in nature -
very red carb. in places. Some low level
dyke.

155 - 470

Crystalline schist rock with double fling

no Will in

184

Lat:

Bear:

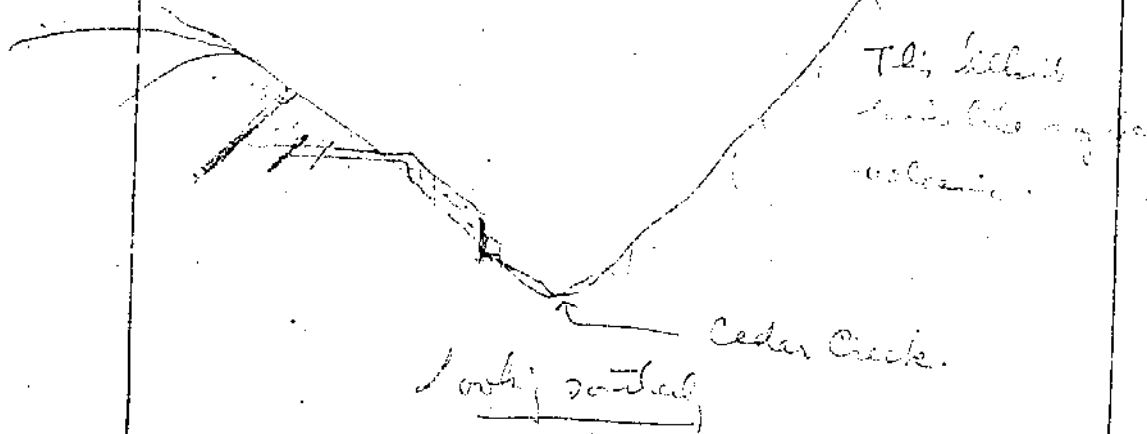
Dep:

Slope:

Elev: 2830 (approx)

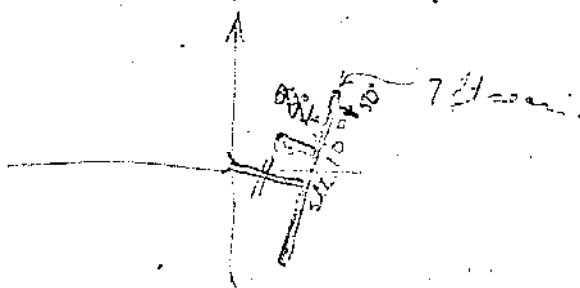
Length:

Jackson
Baker
Callery



Tunnel - Bear, 110° E 3000' No
 at top of peak - S. 20° dip 48 E

700' drift.



Cut top of mine - 50' ...
 sch. N 20° E
 dip 52 E

for Taylor in charge

5
 184

Lat:

Bear:

Dep:

Slope:

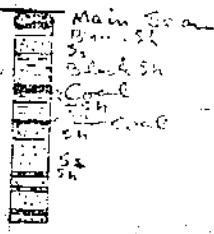
Elev:

Length:

Jacksonville
Section

Measure down from Main sea. To road no. 10 of distance

0 - 7	Coal - ^{Main sea very good looking coal} with little part on base	7'
12	Brown shale	5'
22	Sandstone	10'
38	Shale - Black	16'
42 1/2	Coal - ^{Banded shale: 7' thick N 20° E} ^{dip 57° E}	4 1/2'
47 1/2	Slab with thin coal str. - 1/16" or so.	5'
57.8	Banded shale	10.2'
57.7	Coal - very thin	0.2'
65.7	Sandy slab - some coal str.	8'
82.7	Banded sandstone - some coal str.	17'
84	Shale - sandy	1.3'
90	Sandstone - Banded	6'
92	Shale	2'
102	Sandstone	10'
103	Sandy slab	1'
108	Sandstone	5+
	Surface material	



Ss. Regl.

5
184

Lat:
Dep:
Elev:

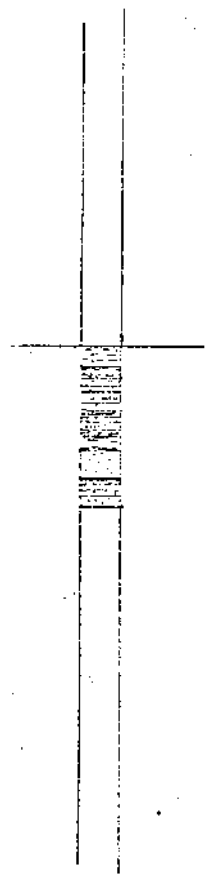
Bear: at point on south side
Slope: across from Talmage
Length: Red Bluff.

Paleo. Valley

Mining up from bottom.

83	Cherty material - ss and beds separated by shale, some sandy parting	5
78	Sandstone - some shaly parting and coarseness	3
75'	Sandy quartzite	3
72	Sandy shale	3
69	Coal	1
68	Lenticular with some shaly, sandstone partings and fossiliferous limestone	13'
55	Banded coal - some - 25% ash rest 1 section. Last coal seen 1 1/2' at top may be 3' coal.	10'
45'	Cherty quartzite.	2
43	Slaty grey banded coal	4
39	Cherty quartzite	2
37	Banded coal - 1 ft. in center	4
33	Quartzite	3
30	Grey banded slaty red and clay	5
25	Bentinite	0.5'
24.5	Quartzite	3.5'
21	Buff banded ash	2
17-19	Quartzite Slaty banded shale	2'

{ strike 104°
Dip 35° S



184⁵

Lat:

Bear:

Dep:

Slope:

Elev:

Below north of road to ...

Pleasant Valley
Cort

Length:

17	Buff to reddish creamy banded coal seam with some calcareous material	2
15	Reddish to creamy banded shale fossiliferous	3
12	Buff to red + creamy banded coal seam	2
0-10	Banded shale - fossiliferous	10+

Top of ...

5
184

Lat:

Bear:

Dep:

Slope:

Elev:

Length:

Plains Valley

Between #2 (lower) and #1 (upper) sec. at P.V.
is about 430' above main sec. (vertically)

~~Q No 1 P.V.~~ (projected to)
is about 230' below bottom
of DH #2 Venelin Forks. i.e., C.C. is
about 320' above it.

Note above info. from section along P.V. - Take care
slope made by Gregory

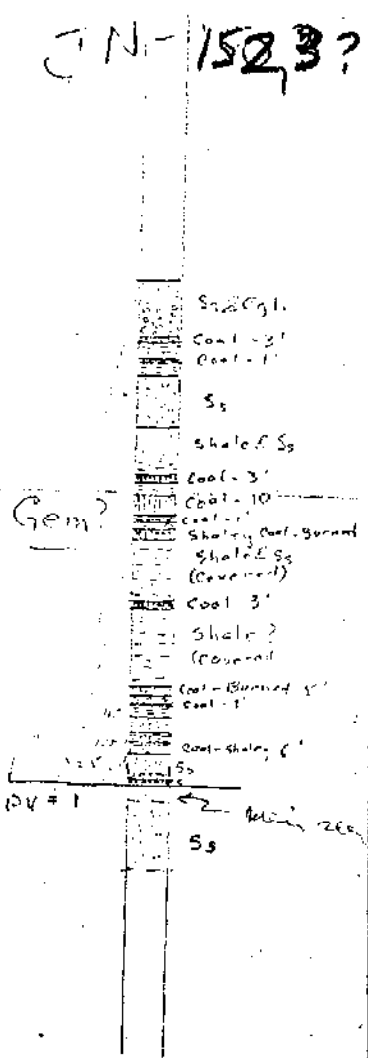
5
184

Lat: _____ Bear: _____
 Dep: _____ Slope: _____
 Elev: _____ Length: _____

Whitney
 Pleasant Valley
 No. 1 Mine Probably

Section ascending up from lowest strata - about at
 road - main entry to No. 1 mine (not to be)

0 - 0.7	Shale - gray and blue	0.7
1.0	Coal	0.3
2	Shale - with about 0.1 sandstone - shaly clay	1.0
17	Sandstone bed with many concretions - grade to conglom for bottom 5 ft - possibly to 24'	15.0
23	Shaly coal - ab 125° cut with 2' shale in between 3, 2, 1	6.0
27	Course is shale	4.0
28	Shale	1.0
37	Sandstone - some coal shaly partings	9.0
42	Shale - rather sandy	5.0
43	shaly coal	1.0
48	Bentonite and clay	5.0
53	Red burned coal seen a shale	5.0
93	Shale - mostly covered	40.0
96	Coal seen	3.0
128	Shale and sandstone (covered)	32.0
133	Burned shaly coal	5.0
136	Sandstone	3.0
137	Coal	1.0
140	Shale	3.0



5
184

Lat:

Bear:

Dep:

Slope:

Elev:

Length:

Wilson
~~...~~
Coal 27

Shales coming up from previous page bottom

140 - 150	Coal - Some shaly parting { str. N 25° E } { dip 18° SE } } Com. Plan	10.0
157	Shale - some coal inter.	7.0
160	Coal -	3.0
185	Shale at surface - 3' shale at bottom then 20' cover - section at top.	25
212	Sandstone - clayey.	2.7
218	Shale	6
219	Shaly coal	1
229	Coaly shale	10
232	Coal - old thin shaly coal - covered.	3'
262	Sandstone with at least 20' coarse coarse at bottom - pebbles to 1"	30

Note: This is highest strata seen in the outcrop - Elevation is ab. 2400

2420
260

Further west is outcrop which shows ab. + 35' of coarse sandstone with coarse bedding and some fine beds with shaly to coaly layers. This is all below the lowest coal seen - prob bottom of preceding section str. N 80° W dip 15° S

JN-110

5
184

Lat:

Bear:

Dep:

Slope:

Elev:

Length:

Gen. Desc.

Coal series in Can. section abt +
40ft under series of clay
in R.R. cut at M. 1.0.

Strat. at 1.7 is possibly
same series. - not logged this

Line of strike of Can. Sec.
leads for Railway Tunnel on north
side of K.V.

5
184

Lat:

Bear:

Dep:

Slope:

Elev: *W. & B. h. S. Length.*

Gen Mine

<i>Abt 30' below Railway</i>	
<i>Sandstone with thin coal seams</i>	<i>10'</i>
<i>St N 30° E Dip 15° SE</i>	
<i>Shale - light grey</i>	<i>2'</i>
<i>Coal - Gen seam</i>	<i>4'</i>
<i>Carbonaceous shale - maybe some coal</i>	<i>10'</i>

5
184

Bromley Creek; First Thought Gold Mine

Lat: *Latitude at present, but to be corrected to be*
 Dep: *depth of mine* Slope: *7 ft. in 100 ft. of coal*
 Elev: *at top of shaft* Length: *2 1/2 miles of line*

Sharps
Bore Hole

0.0	Gravel	
7.5	Sandstone	
	Coal	9.0
	Shale	1.5
	Coal	1.0
	Shale	2.7
36.0	Coal	
460.0	Shale and Sandstone	
536.0	White Clay with dark spots	7.5
545.5	Coal	
	Clay or shale	2.0
	Coal	2.0
	Clay or shale	1.5
	Coal	1.0
	Shale	3.0
	Coal	3.0
	Shale	3.8
	Coal	3.0
	Shale	3.5
603.0	Coal	1.0
	Shale	
712.0	Coal	3.0
715.0	Shale and Sandstone	3.0
	Coal	
863.0	Shale and Sandstone	



5
184

Lat:

Bear:

Bramley Vale

Dep:

Slope:

D.D.N. 2.4

Elev: 2815

Length:

0 - 90	Chopped - and surface material	
135	Sandy shale - broken at structure	Sand
170	Abt 4' core recovered - all coarse grey sandstone. Prob soft shale and sandstone ribs.	Sandy shale
245	Sandy shale - some conglomerate like. Some beds at start dip at 45° to hole - at 182 as at 25°, at 212 is 45°. All quite soft, but some sandstone beds.	Shale SS
260	Soft grey sandy shale - some ribs more sandy than others, but all quite soft and shaly. Beds at 45° to hole.	Sandy shale SS
281	Like above section - but beds get steeper. Dip from 40° to 35° to hole.	Shale SS
283	Sandstone. - bedded - at 33° to hole.	Shale SS
307	Sandy shale. - some bedding & conglomerate material	Shale SS
312	Sandstone - last half interbedded with the shale part - some with carb material. Beds at 65°	Shale SS
340	Bedded shale with some sandstone beds Bedding uniform at 65° to hole.	Shale SS
375	Well bedded soft shale with occas thin coal seam (1/4") and some sandstone beds, but scarce. Beds uniform at 70° to hole. Beds near top at least beds have flattened to 75° to hole.	Shale SS
400	Soft shale and sandstone. Shale has breadcrumbed limbs (Was this broken up in hole and then dried out in box) Bedded part of shale has erratic dips up to 40° to hole So is rather fine and sandy.	Shale SS

184

Lat:

Bear:

Dep:

Slope:

Elev:

Length:

Bio Co, Vale #4-100

page 2

409 Massive looking shale with several irregular looking str. of quartz sandstone and some carb. material

417 Well bedded shale - thin beds - $2\frac{1}{16}$ " are at 70° to beds - as far as the sandstone beds occur

420 22 x $1\frac{1}{2}$ ' sandstone and some massive shale with irregular qtz bands.

422 Well bedded soft grey shale. Beds at 70° to beds.

5
184

Lat:

Bear:

Dep:

Slope:

Elev:

Drill Hole Location

Bearing of all
#4 D.H.

00 - True $170 \text{ f} \times 19 \text{ per } 100' = 895'$ bearing N 87° W

True - Part of
Golden Glass
Slope $190 \text{ f} \times 19 \text{ per } 100' = 1000'$ bearing N 70° W.

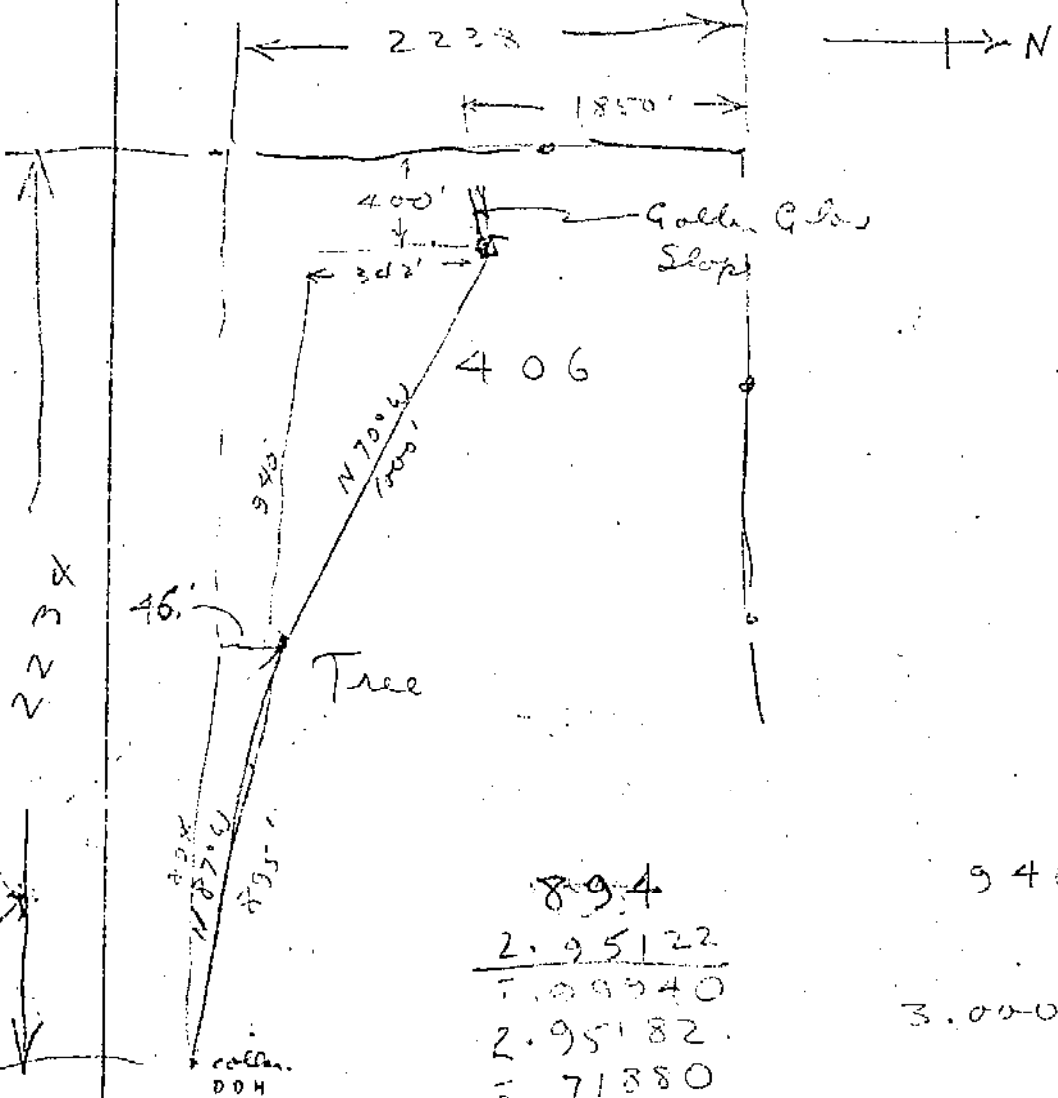
$$\begin{array}{r} 19170 \\ 152 \\ \hline 180 \\ 171 \\ \hline 90 \end{array}$$

{ Lat:
Dep:

{ Lat:
Dep:

$$\begin{array}{r} 2640 \\ 2240 \\ \hline 400 \end{array}$$

385 lat.



$$\begin{array}{r} 1850 \\ 342 \\ \hline 46 \end{array}$$

$$\begin{array}{r} 2238 \\ 400 \\ 940 \\ 894 \\ \hline 2234 \end{array}$$

$$\frac{2236}{5280} = 0.424$$

$$\begin{array}{r} 894 \\ 2.95122 \\ \hline 7.09940 \\ 2.95182 \\ \hline 2.71380 \\ \hline 1.56062 \end{array}$$

$$\begin{array}{r} 940 \\ 3.00040 \end{array}$$

$$\begin{array}{r} 1419 \\ 2236 \\ \hline 8437 \\ 4212 \\ 2828 \\ \hline 2828 \end{array}$$

$$\begin{array}{r} 528 \\ 2236 \cdot 424 \\ \hline 2112 \\ 1240 \\ 1056 \\ \hline 1840 \end{array}$$

184

342

$$\begin{array}{r} 3161604 \\ 3160' = \end{array}$$

$$\begin{array}{r} 2344 \\ 316 \\ \hline 5904 \end{array}$$

Lat:

Bear:

Dep:

Slope:

Elev:

2350
Tunnel about 100 ft long about down dip at -20°

Length: Pot 292.

(Burrs Prospect)

Burr. Prospect
7/3

Tunnel about 100 ft long about down dip at -20°
Tunnel bears S80°W.
Slates N 10°W dip 20° SW

P2

Section at Face

Flour	Hard carb shale.	
	Coal	1.25
	Clay	.35
	Coal - no pure - shale at 30%	1.8
	Clay	.1
	Coal - bad shale.	.9
	Clay - no coal beds	.7
	Coal - shaly	.9
Roof	Coal - shaly	

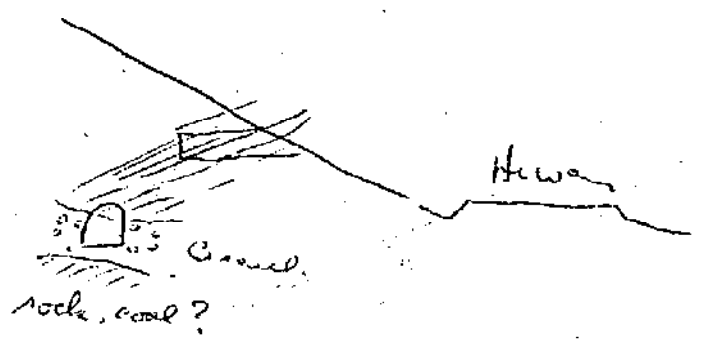
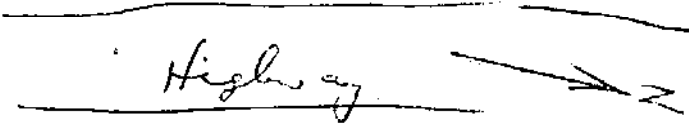
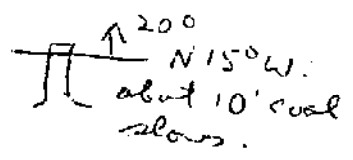
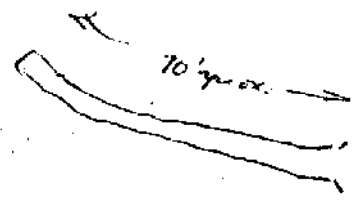
6.0' pure coal

Total thickness pure coal now is 8 ft
Slates above
Slaty below
Exposure of rock on vein about 40'
also north of tunnel.

5
184

W. Side of Highway prob on Lot 300
 Lat. 200
 Dep. 200
 Elev. 200
 Bear:
 Slope:
 Length:

Bears Prospect



Section looking N

This tunnel shows some
 carb. shales, a coal
 layer above coarse
 gravel. - appears to be
 slump. Dips not def.
 but rather flat.
 This tunnel about 15'
 lower than other tunnel.
 strike prob abt N 15° E

5
 184

Lat:

Bear:

Dep:

Slope:

Elev: 2350.

Length:

John Biggs, Paper

About 50 ft tunnel heading S 30° W.

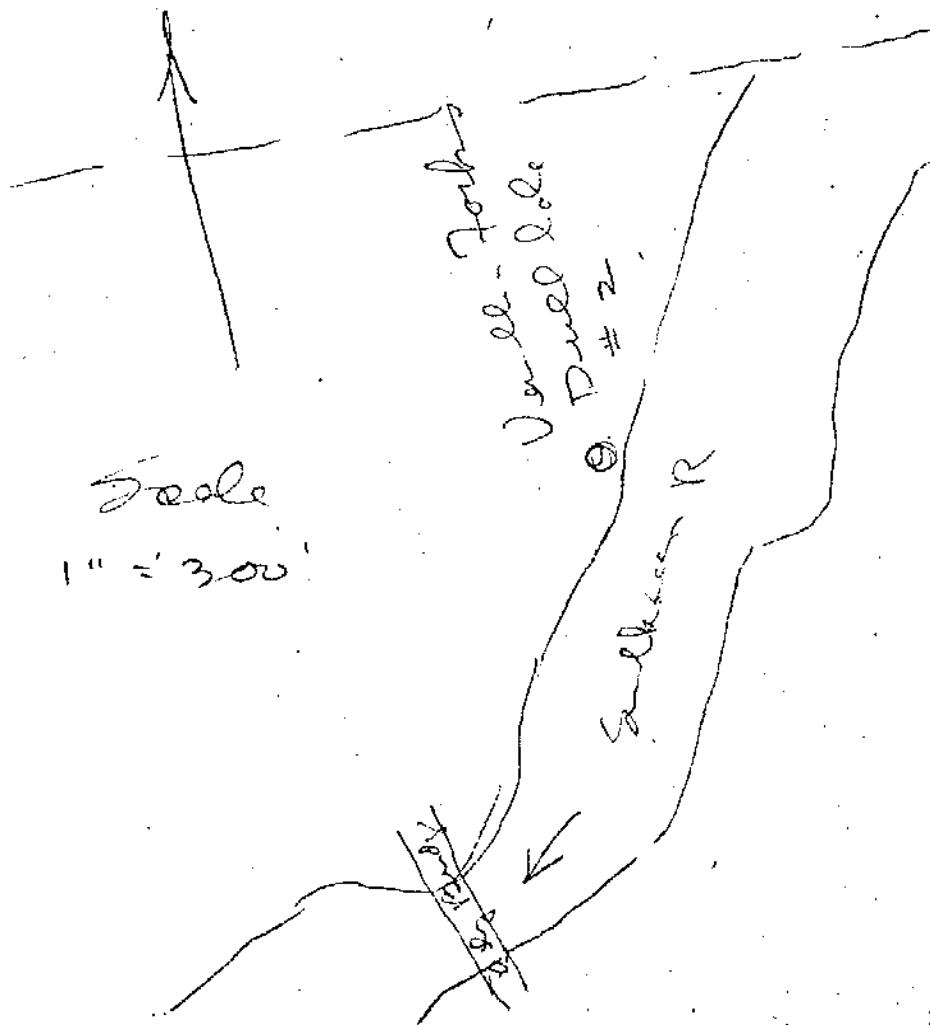
All reddish brown coal seen.

Bed appears to be about flat or dipping toward portal, but rather gimbled.

Ab. 200' farther up road. - about same elevation.

Outcrop in Road cut. Strike N 50° W dip 25° NE

about 7' slab - not badly banded, then 7 ft of more reddish slab to E of tunnel at rear of the cut



Vanell Forks
Dredged hole
No. 2

184

Lat:

Bear:

Dep:

up bank of W. slope of Creek.

Slope:

Elev: 2825

Length:

Blue Flame Mine.

Main N. E. way gas down dip.

Strike N 60° W. dip 12° NE

Can't see location of seam as nature of formation above or below it

JN-233

Outcrop on road where corner from N. E. 5 go. from creek.

Beds strike N 80° E dip 33° NW at upper end of

" " N 60° E dip 38° NW at lower end

Elev 2800 Enters for about 200' - about 1/4 mile below on creek.

From bottom up.

JN 236,7

72 S. shale & clay 17

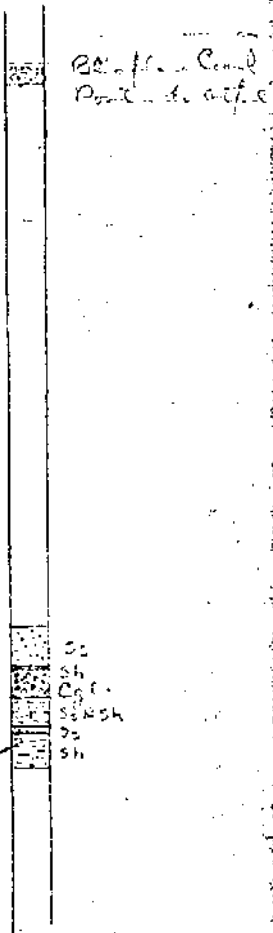
55 Sandstone 3

52 Sandstone & soft shale (covered) 15'

37 Coarse sandstone - pebbles to 1/2" 15'

22 Shale 2'

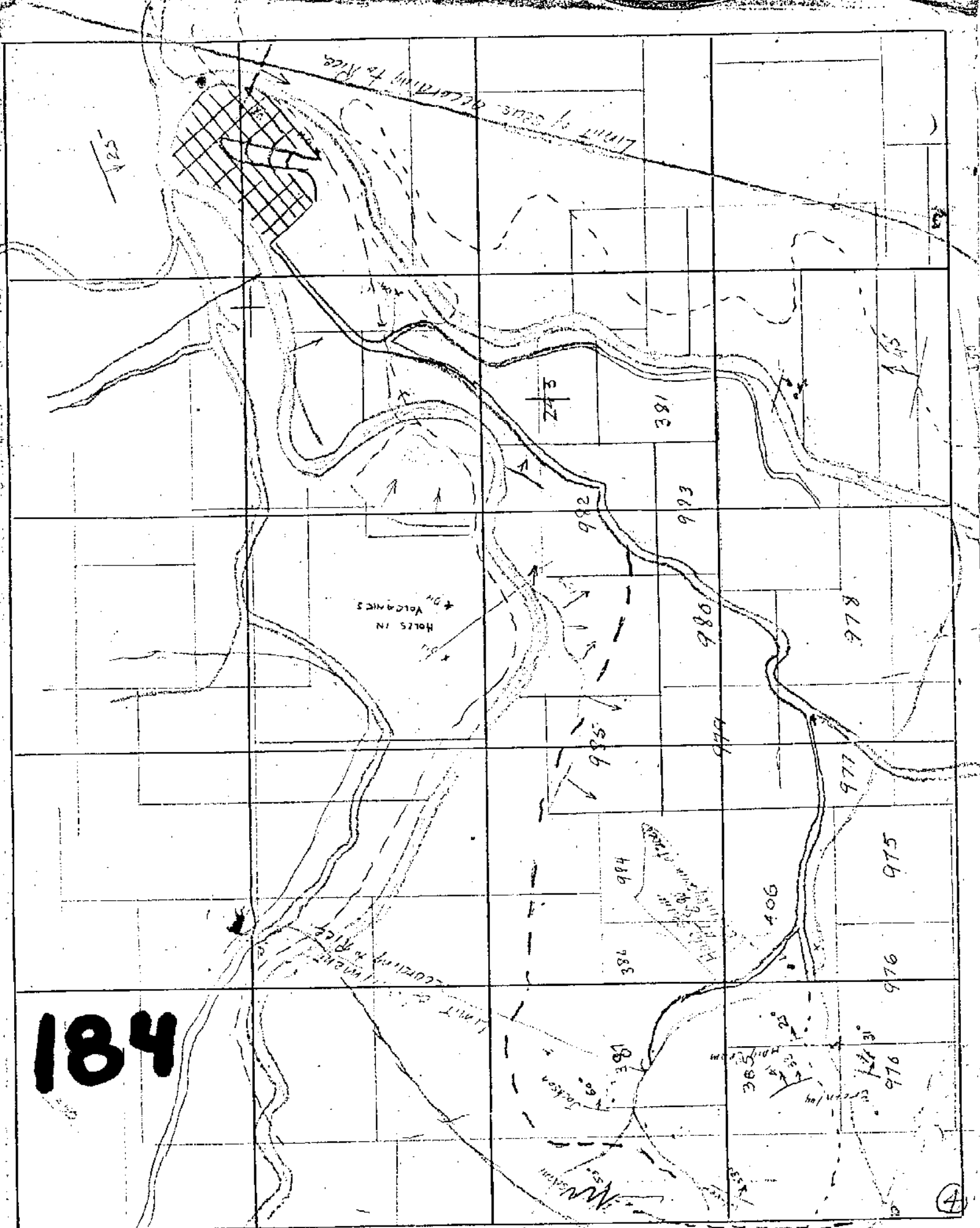
0-20 Sandstone - 20 +



Note:

Also formation is under still lying under coal seam, but exact distance not known - possibly 200 or 300 feet.

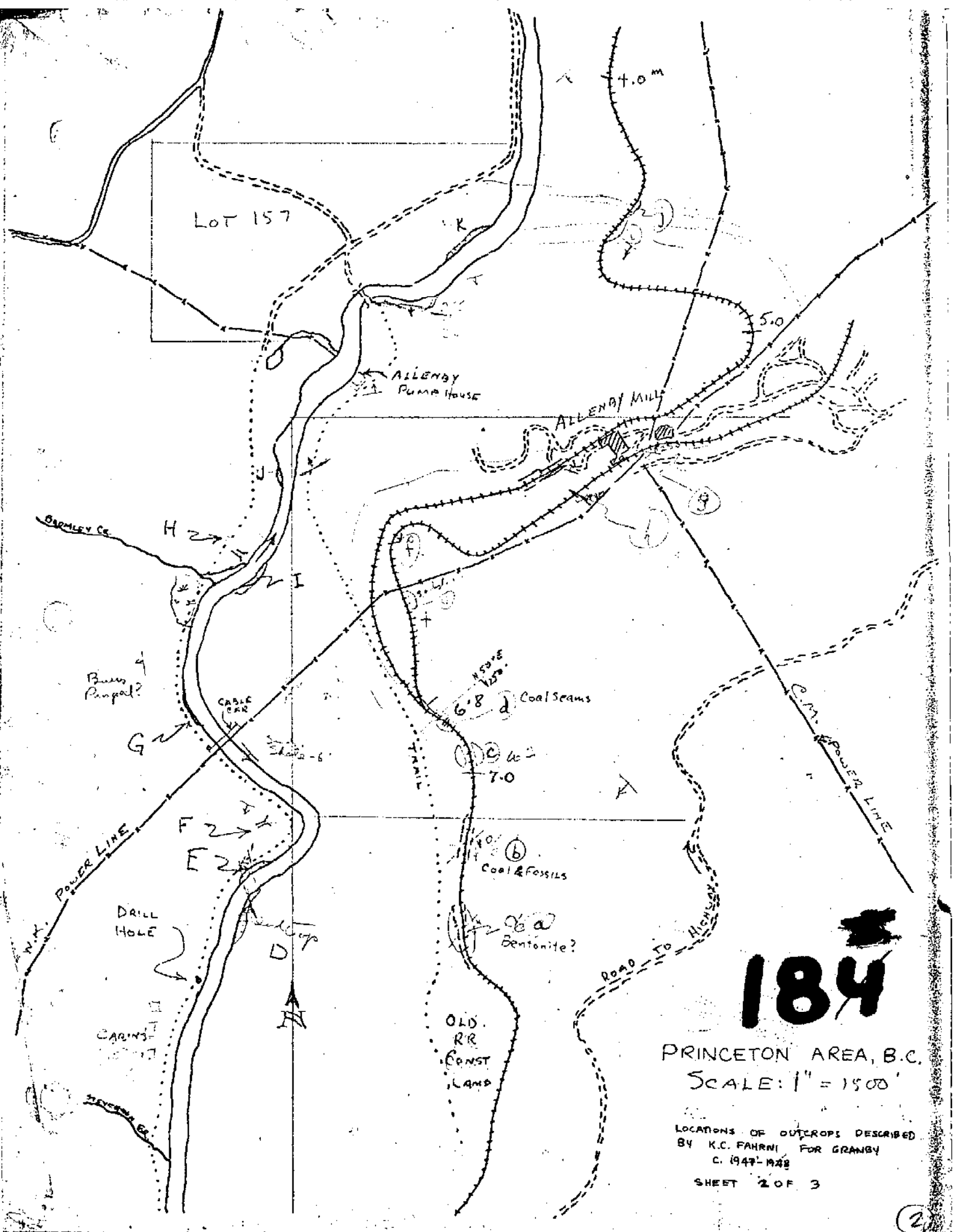
184

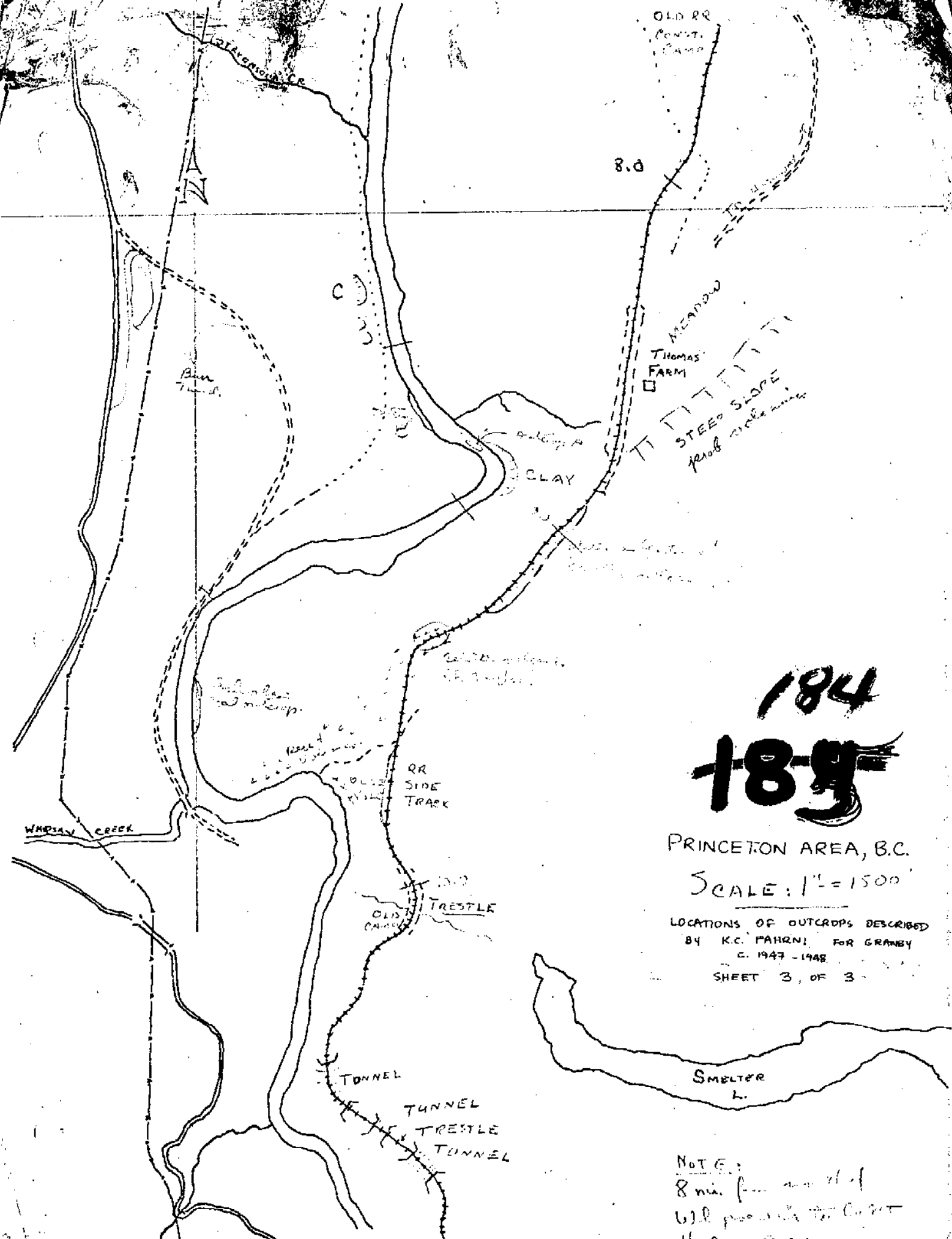


184

PRINCETON AREA, B.C.
 ROUGH GEOLOGICAL SKETCH MAP TO ACCOMPANY
 FIELD NOTES OF K.C. FAHRNI

SM-Granby 45/25/27 NO. 7 NO. 1





184
189

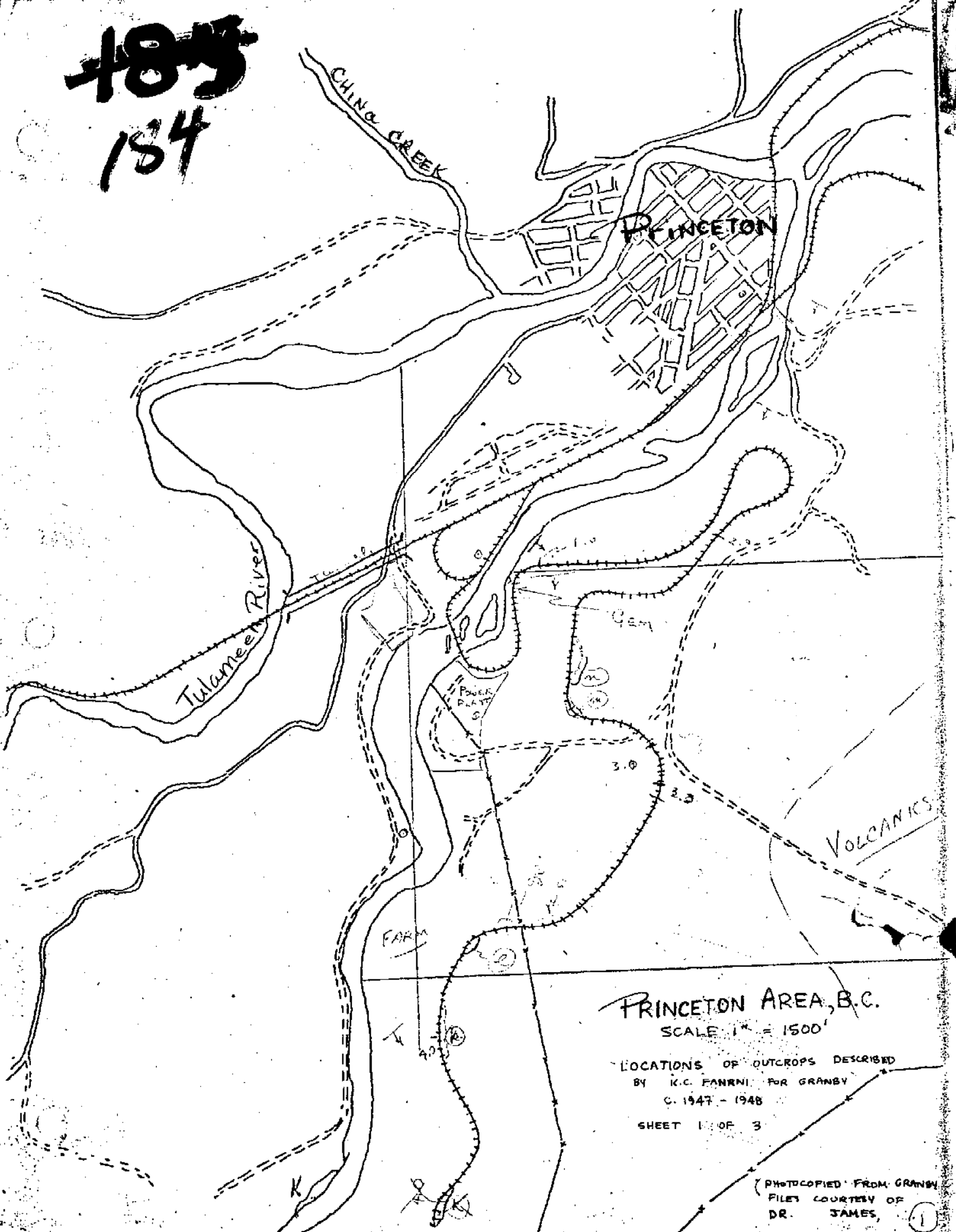
PRINCETON AREA, B.C.

SCALE: 1" = 1500'

LOCATIONS OF OUTCROPS DESCRIBED
BY K.C. FAHNI FOR GRANBY
C. 1947-1948
SHEET 3, OF 3

NOTE:
8 mi. from west of
V.I. road to the west
of the city.

485
184



PRINCETON AREA, B.C.
SCALE 1" = 1500'

LOCATIONS OF OUTCROPS DESCRIBED
BY K.C. FARRINI FOR GRANBY
C. 1947 - 1948
SHEET 1 OF 3

PHOTOCOPIED FROM GRANBY
FILES COURTESY OF
DR. JAMES, 1