

GRAPHIC LOGS OF HISTORICAL BOREHOLES  
NAME <sup>SA</sup> PRINCETON No.

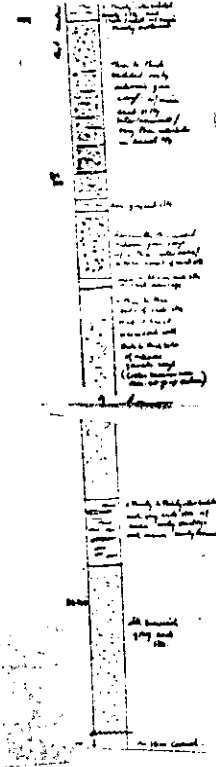
SA-PRINCETON 47 (2) A

**OPEN FILE**

**GEOLOGICAL BRANCH  
ASSESSMENT REPORT**

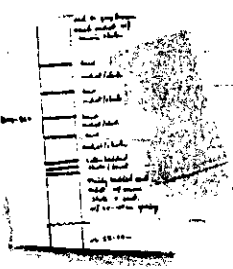
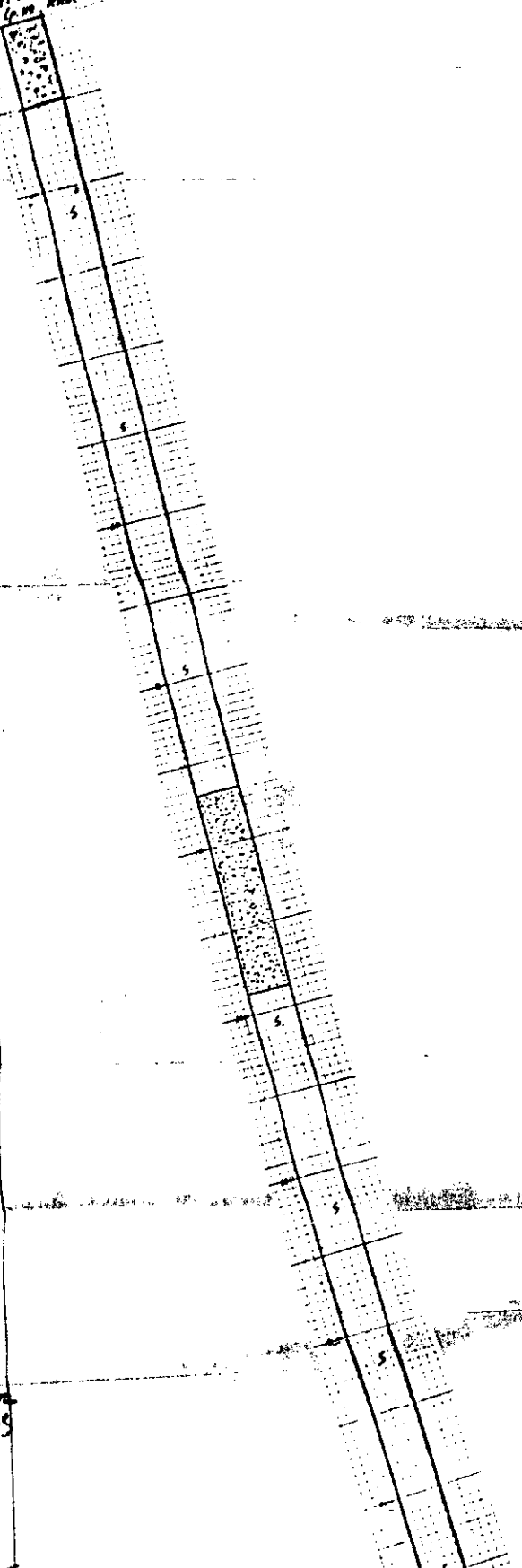
**00 188**

400  
375  
350  
325  
300  
275  
250  
225  
200  
175  
150  
125



15

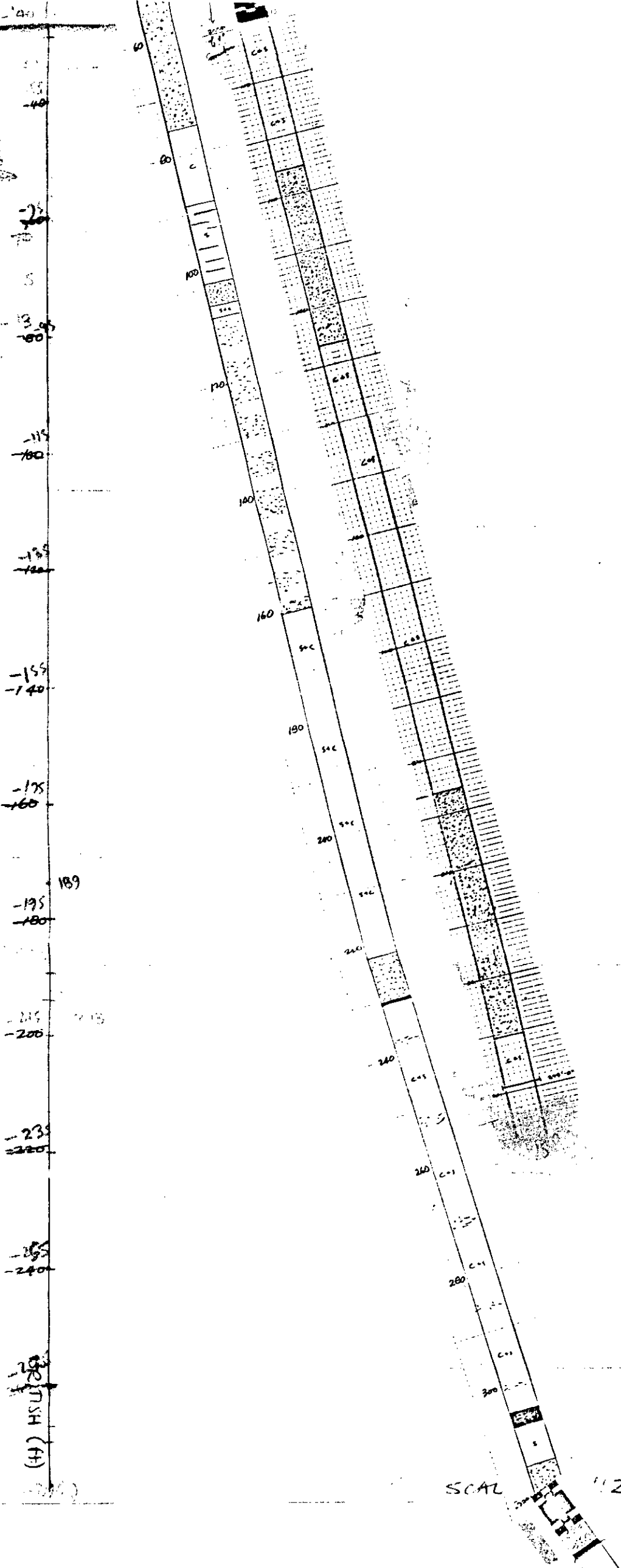
VFMC SHS  
(P. 19, 200 (19))



100

188

23



0  
 20  
 40  
 60  
 80  
 100  
 120  
 140  
 160  
 180  
 200  
 220  
 240  
 260  
 280  
 300  
 320  
 340  
 360  
 380  
 400  
 420  
 440  
 460  
 480  
 500  
 520  
 540  
 560  
 580  
 600  
 620  
 640  
 660  
 680  
 700  
 720  
 740  
 760  
 780  
 800  
 820  
 840  
 860  
 880  
 900  
 920  
 940  
 960  
 980  
 1000

BRITISH (H)

SCAL 11240

Series 11240

149  
129  
109  
95  
65  
57  
48  
35  
25  
13  
100

2  
150  
APNDL 2012  
(10.21)

Typical section through  
Plymouth Station at the  
River, Plymouth, N.Y.

BM 238

COVERED NUMBER

6.04

and depth of ...  
(N. 70.00)

BM 239

BM 240

BM 241

BM 242

BM 243

BM 244

BM 245

BM 246

BM 247

BM 248

BM 249

BM 250

BM 251

BM 252

BM 253

BM 254

BM 255

BM 256

BM 257

BM 258

BM 259

BM 260

BM 261

BM 262

BM 263

BM 264

BM 265

BM 266

BM 267

BM 268

BM 269

BM 270

BM 271

BM 272

BM 273

BM 274

BM 275

BM 276

BM 277

BM 278

BM 279

BM 280

BM 281

BM 282

BM 283

BM 284

BM 285

BM 286

BM 287

BM 288

BM 289

BM 290

BM 291

BM 292

BM 293

BM 294

BM 295

BM 296

BM 297

BM 298

BM 299

BM 300

BM 301

BM 302

BM 303

BM 304

BM 305

BM 306

BM 307

BM 308

BM 309

BM 310

BM 311

BM 312

BM 313

BM 314

BM 315

BM 316

BM 317

BM 318

BM 319

BM 320

BM 321

BM 322

BM 323

BM 324

BM 325

BM 326

BM 327

BM 328

BM 329

BM 330

BM 331

BM 332

BM 333

BM 334

BM 335

BM 336

BM 337

BM 338

BM 339

BM 340

BM 341

BM 342

BM 343

BM 344

BM 345

BM 346

BM 347

BM 348

BM 349

BM 350

BM 351

BM 352

BM 353

BM 354

BM 355

BM 356

BM 357

BM 358

BM 359

BM 360

BM 361

BM 362

BM 363

BM 364

BM 365

BM 366

BM 367

BM 368

BM 369

BM 370

BM 371

BM 372

BM 373

BM 374

BM 375

BM 376

BM 377

BM 378

BM 379

BM 380

BM 381

BM 382

BM 383

BM 384

BM 385

BM 386

BM 387

BM 388

BM 389

BM 390

BM 391

BM 392

BM 393

BM 394

BM 395

BM 396

BM 397

BM 398

BM 399

BM 400

BM 401

BM 402

BM 403

BM 404

BM 405

BM 406

BM 407

BM 408

BM 409

BM 410

BM 411

BM 412

BM 413

BM 414

BM 415

BM 416

BM 417

BM 418

BM 419

BM 420

BM 421

BM 422

BM 423

BM 424

BM 425

BM 426

BM 427

BM 428

BM 429

BM 430

BM 431

BM 432

BM 433

BM 434

BM 435

BM 436

BM 437

BM 438

BM 439

BM 440

BM 441

BM 442

BM 443

BM 444

BM 445

BM 446

BM 447

BM 448

BM 449

BM 450

BM 451

BM 452

BM 453

BM 454

BM 455

BM 456

BM 457

BM 458

BM 459

BM 460

BM 461

BM 462

BM 463

BM 464

BM 465

BM 466

BM 467

BM 468

BM 469

BM 470

BM 471

BM 472

BM 473

BM 474

BM 475

BM 476

BM 477

BM 478

BM 479

BM 480

BM 481

BM 482

BM 483

BM 484

BM 485

BM 486

BM 487

BM 488

BM 489

BM 490

BM 491

BM 492

BM 493

BM 494

BM 495

BM 496

BM 497

BM 498

BM 499

BM 500

BM 501

BM 502

BM 503

BM 504

BM 505

BM 506

BM 507

BM 508

BM 509

BM 510

BM 511

BM 512

BM 513

BM 514

BM 515

BM 516

BM 517

BM 518

BM 519

BM 520

BM 521

BM 522

BM 523

BM 524

BM 525

BM 526

BM 527

BM 528

BM 529

BM 530

BM 531

BM 532

BM 533

BM 534

BM 535

BM 536

BM 537

BM 538

BM 539

BM 540

BM 541

BM 542

BM 543

BM 544

BM 545

BM 546

BM 547

BM 548

BM 549

BM 550

BM 551

BM 552

BM 553

BM 554

BM 555

BM 556

BM 557

BM 558

BM 559

BM 560

BM 561

BM 562

BM 563

BM 564

BM 565

BM 566

BM 567

BM 568

BM 569

BM 570

BM 571

BM 572

BM 573

BM 574

BM 575

BM 576

BM 577

BM 578

BM 579

BM 580

BM 581

BM 582

BM 583

BM 584

BM 585

BM 586

BM 587

BM 588

BM 589

BM 590

BM 591

BM 592

BM 593

BM 594

BM 595

BM 596

BM 597

BM 598

BM 599

BM 600

BM 601

BM 602

BM 603

BM 604

BM 605

BM 606

BM 607

BM 608

BM 609

BM 610

BM 611

BM 612

BM 613

BM 614

BM 615

BM 616

BM 617

BM 618

BM 619

BM 620

BM 621

BM 622

BM 623

BM 624

BM 625

BM 626

BM 627

BM 628

BM 629

BM 630

BM 631

BM 632

BM 633

BM 634

BM 635

BM 636

BM 637

BM 638

BM 639

BM 640

BM 641

BM 642

BM 643

BM 644

BM 645

BM 646

BM 647

BM 648

BM 649

BM 650

BM 651

BM 652

BM 653

BM 654

BM 655

BM 656

BM 657

BM 658

BM 659

BM 660

BM 661

BM 662

BM 663

BM 664

BM 665

BM 666

BM 667

BM 668

BM 669

BM 670

BM 671

BM 672

BM 673

BM 674

BM 675

BM 676

BM 677

BM 678

BM 679

BM 680

BM 681

BM 682

BM 683

BM 684

BM 685

BM 686

BM 687

BM 688

BM 689

BM 690

BM 691

BM 692

BM 693

BM 694

BM 695

BM 696

BM 697

BM 698

BM 699

BM 700

BM 701

BM 702

BM 703

BM 704

BM 705

BM 706

BM 707

BM 708

BM 709

BM 710

BM 711

BM 712

BM 713

BM 714

BM 715

BM 716

BM 717

BM 718

BM 719

BM 720

BM 721

BM 722

BM 723

BM 724

BM 725

BM 726

BM 727

BM 728

BM 729

BM 730

BM 731

BM 732

BM 733

BM 734

BM 735

BM 736

BM 737

BM 738

BM 739

BM 740

BM 741

BM 742

BM 743

BM 744

BM 745

BM 746

BM 747

BM 748

BM 749

BM 750

BM 751

BM 752

BM 753

BM 754

BM 755

BM 756

BM 757

BM 758

BM 759

BM 760

BM 761

BM 762

BM 763

BM 764

BM 765

BM 766

BM 767

BM 768

BM 769

BM 770

BM 771

BM 772

BM 773

BM 774

BM 775

BM 776

BM 777

BM 778

BM 779

BM 780

BM 781

BM 782

BM 783

BM 784

BM 785

BM 786

BM 787

BM 788

BM 789

BM 790

BM 791

BM 792

BM 793

BM 794

BM 795

BM 796

BM 797

BM 798

BM 799

BM 800

BM 801

BM 802

BM 803

BM 804

BM 805

BM 806

BM 807

BM 808

BM 809

BM 810

BM 811

BM 812

BM 813

BM 814

BM 815

BM 816

BM 817

BM 818

BM 819

BM 820

BM 821

BM 822

BM 823

BM 824

BM 825

BM 826

BM 827

BM 828

BM 829

BM 830

BM 831

BM 832

BM 833

BM 834

BM 835

BM 836

BM 837

BM 838

BM 839

BM 840

BM 841

BM 842

BM 843

BM 844

BM 845

BM 846

BM 847

BM 848

BM 849

BM 850

BM 851

BM 852

BM 853

BM 854

BM 855

BM 856

BM 857

BM 858

BM 859

BM 860

BM 861

BM 862

BM 863

BM 864

BM 865

BM 866

BM 867

BM 868

BM 869

BM 870

BM 871

BM 872

BM 873

BM 874

BM 875

BM 876

BM 877

BM 878

BM 879

BM 880

BM 881

BM 882

BM 883

BM 884

BM 885

BM 886

BM 887

BM 888

BM 889

BM 890

BM 891

BM 892

BM 893

BM 894

BM 895

BM 896

BM 897

BM 898

BM 899

BM 900

BM 901

BM 902

BM 903

BM 904

BM 905

BM 906

BM 907

BM 908

BM 909

BM 910

BM 911

BM 912

BM 913

BM 914

BM 915

BM 916

BM 917

BM 918

BM 919

BM 920

BM 921

BM 922

BM 923

BM 924

BM 925

BM 926

BM 927

BM 928

BM 929

BM 930

BM 931

BM 932

BM 933

BM 934

BM 935

BM 936

BM 937

BM 938

BM 939

BM 940

BM 941

BM 942

BM 943

BM 944

BM 945

BM 946

BM 947

BM 948

BM 949

BM 950

BM 951

BM 952

BM 953

BM 954

BM 955

BM 956

BM 957

BM 958

BM 959

BM 960

BM 961

BM 962

BM 963

BM 964

BM 965

BM 966

BM 967

BM 968

BM 969

BM 970

BM 971

BM 972

BM 973

BM 974

BM 975

BM 976

BM 977

BM 978

BM 979

BM 980

BM 981

BM 982

BM 983

BM 984

BM 985

BM 986

BM 987

BM 988

BM 989

BM 990

BM 991

BM 992

BM 993

BM 994

BM 995

BM 996

BM 997

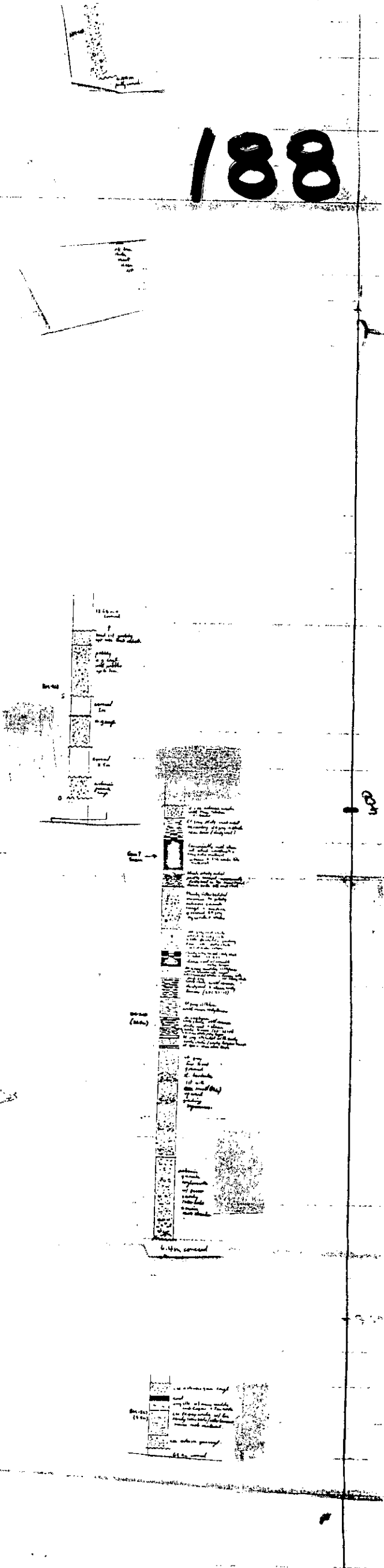
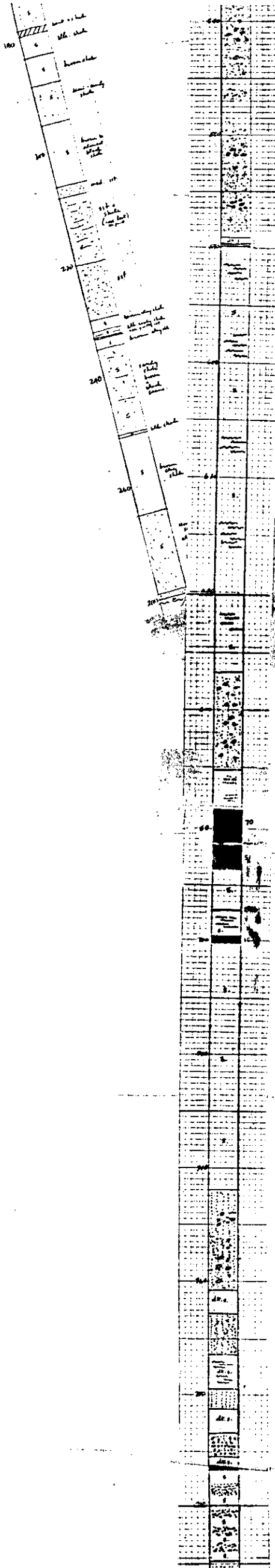
BM 998

BM 999

BM 1000

188

1440  
1420  
1400  
1380  
1360  
1340  
1320  
1300  
1280  
1260  
1240  
1220  
1200

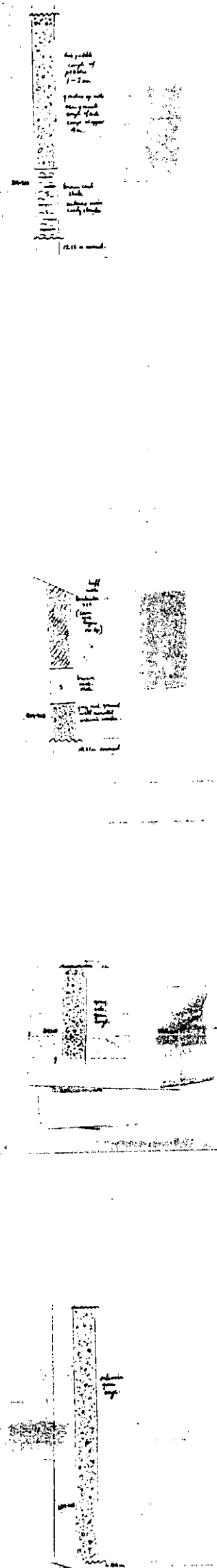
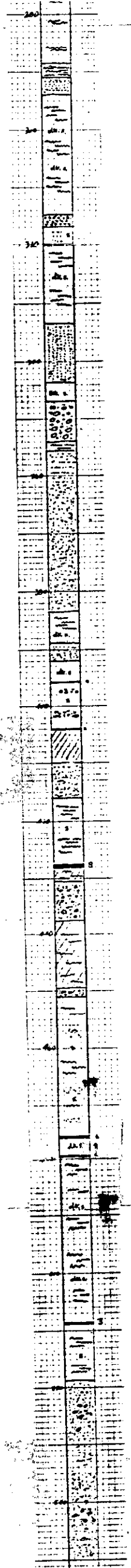
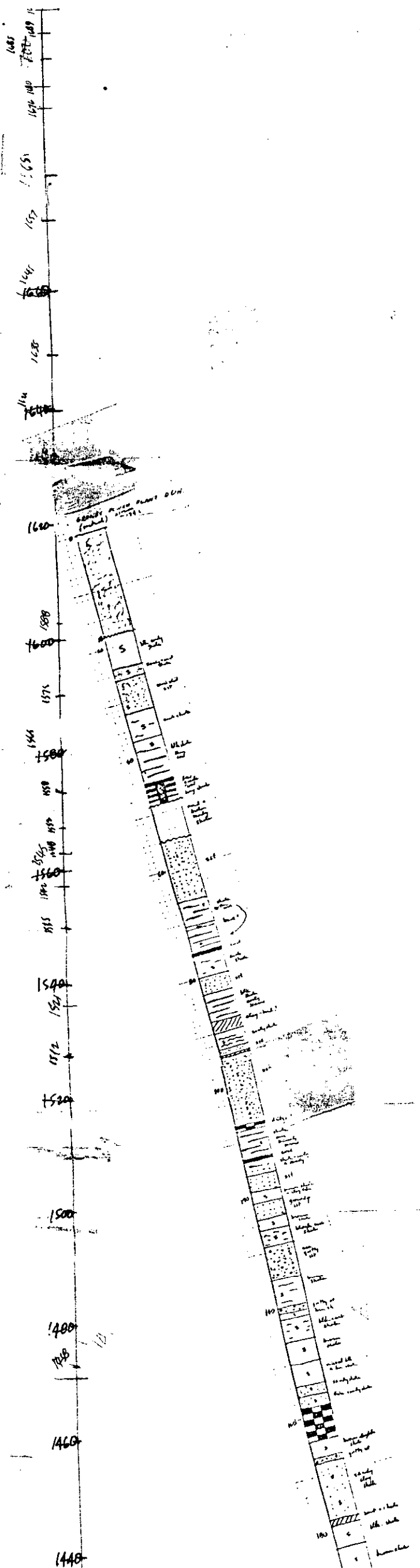


295  
288

400

116

188



PC

188

(23)

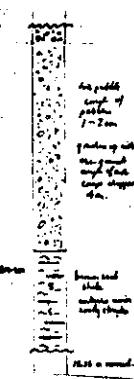
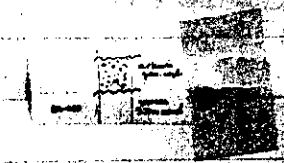
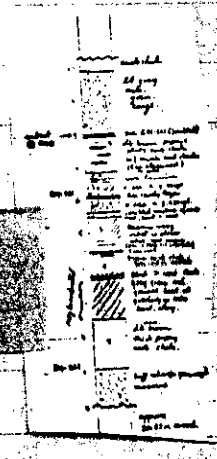
1084  
1082  
1080  
1078  
1076  
1074  
1072  
1070  
1068  
1066  
1064  
1062  
1060  
1058  
1056  
1054  
1052  
1050  
1048  
1046  
1044  
1042  
1040  
1038  
1036  
1034  
1032  
1030  
1028  
1026  
1024  
1022  
1020  
1018  
1016  
1014  
1012  
1010  
1008  
1006  
1004  
1002  
1000  
998  
996  
994  
992  
990  
988  
986  
984  
982  
980  
978  
976  
974  
972  
970  
968  
966  
964  
962  
960  
958  
956  
954  
952  
950  
948  
946  
944  
942  
940  
938  
936  
934  
932  
930  
928  
926  
924  
922  
920  
918  
916  
914  
912  
910  
908  
906  
904  
902  
900  
898  
896  
894  
892  
890  
888  
886  
884  
882  
880  
878  
876  
874  
872  
870  
868  
866  
864  
862  
860  
858  
856  
854  
852  
850  
848  
846  
844  
842  
840  
838  
836  
834  
832  
830  
828  
826  
824  
822  
820  
818  
816  
814  
812  
810  
808  
806  
804  
802  
800  
798  
796  
794  
792  
790  
788  
786  
784  
782  
780  
778  
776  
774  
772  
770  
768  
766  
764  
762  
760  
758  
756  
754  
752  
750  
748  
746  
744  
742  
740  
738  
736  
734  
732  
730  
728  
726  
724  
722  
720  
718  
716  
714  
712  
710  
708  
706  
704  
702  
700  
698  
696  
694  
692  
690  
688  
686  
684  
682  
680  
678  
676  
674  
672  
670  
668  
666  
664  
662  
660  
658  
656  
654  
652  
650  
648  
646  
644  
642  
640  
638  
636  
634  
632  
630  
628  
626  
624  
622  
620  
618  
616  
614  
612  
610  
608  
606  
604  
602  
600  
598  
596  
594  
592  
590  
588  
586  
584  
582  
580  
578  
576  
574  
572  
570  
568  
566  
564  
562  
560  
558  
556  
554  
552  
550  
548  
546  
544  
542  
540  
538  
536  
534  
532  
530  
528  
526  
524  
522  
520  
518  
516  
514  
512  
510  
508  
506  
504  
502  
500  
498  
496  
494  
492  
490  
488  
486  
484  
482  
480  
478  
476  
474  
472  
470  
468  
466  
464  
462  
460  
458  
456  
454  
452  
450  
448  
446  
444  
442  
440  
438  
436  
434  
432  
430  
428  
426  
424  
422  
420  
418  
416  
414  
412  
410  
408  
406  
404  
402  
400  
398  
396  
394  
392  
390  
388  
386  
384  
382  
380  
378  
376  
374  
372  
370  
368  
366  
364  
362  
360  
358  
356  
354  
352  
350  
348  
346  
344  
342  
340  
338  
336  
334  
332  
330  
328  
326  
324  
322  
320  
318  
316  
314  
312  
310  
308  
306  
304  
302  
300  
298  
296  
294  
292  
290  
288  
286  
284  
282  
280  
278  
276  
274  
272  
270  
268  
266  
264  
262  
260  
258  
256  
254  
252  
250  
248  
246  
244  
242  
240  
238  
236  
234  
232  
230  
228  
226  
224  
222  
220  
218  
216  
214  
212  
210  
208  
206  
204  
202  
200  
198  
196  
194  
192  
190  
188  
186  
184  
182  
180  
178  
176  
174  
172  
170  
168  
166  
164  
162  
160  
158  
156  
154  
152  
150  
148  
146  
144  
142  
140  
138  
136  
134  
132  
130  
128  
126  
124  
122  
120  
118  
116  
114  
112  
110  
108  
106  
104  
102  
100  
98  
96  
94  
92  
90  
88  
86  
84  
82  
80  
78  
76  
74  
72  
70  
68  
66  
64  
62  
60  
58  
56  
54  
52  
50  
48  
46  
44  
42  
40  
38  
36  
34  
32  
30  
28  
26  
24  
22  
20  
18  
16  
14  
12  
10  
8  
6  
4  
2  
0

7745

1-35

2120  
450  
700

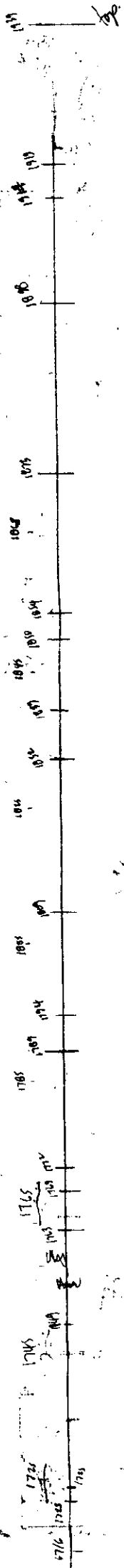
(600)  
GENERAL PLANT DON.  
SC



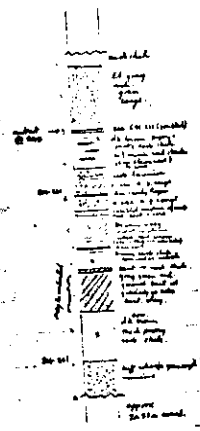
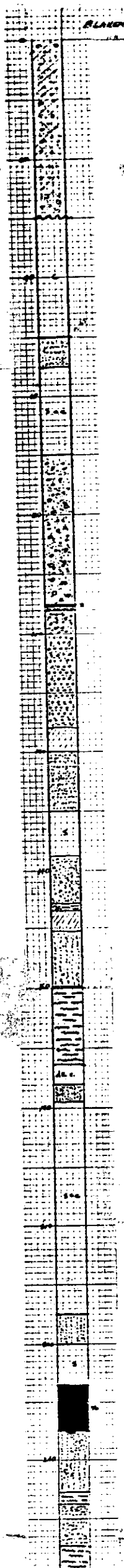
188

6

BLANKING 24 02

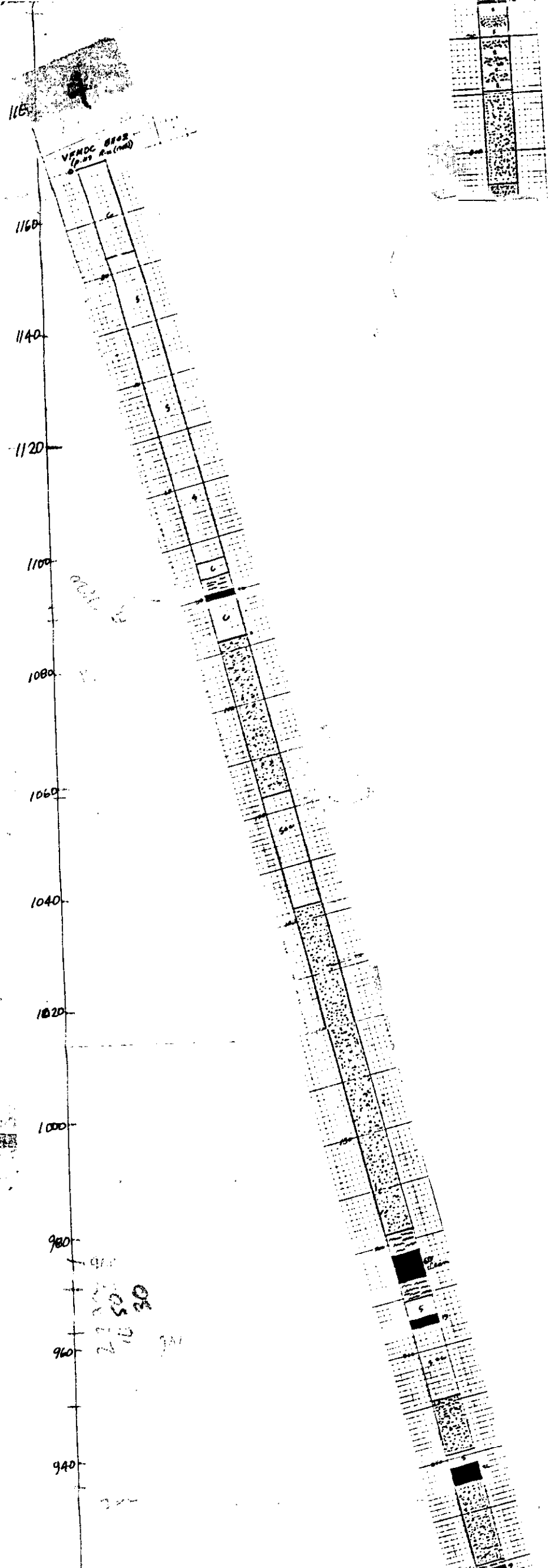


23

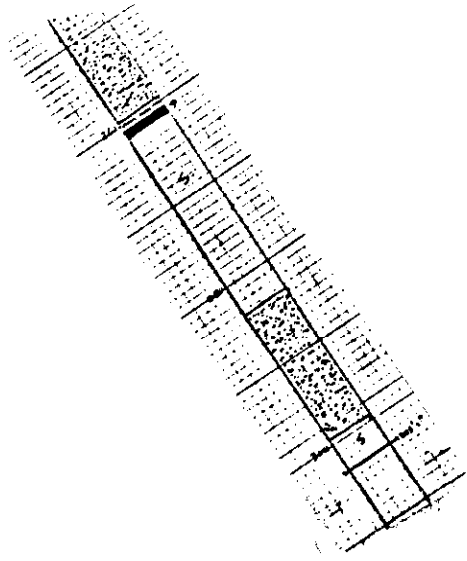




188



THE ACCURACY OF THIS RECORD IS TO BE MAINTAINED



920

900

880

860

840

820

800

780

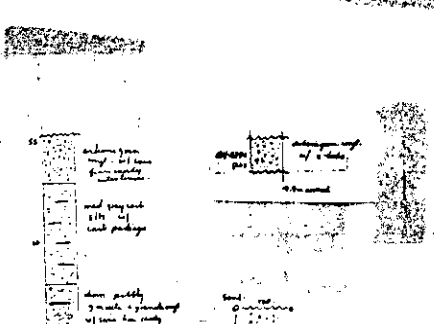
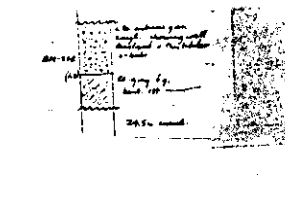
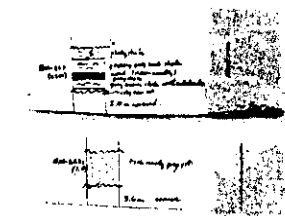
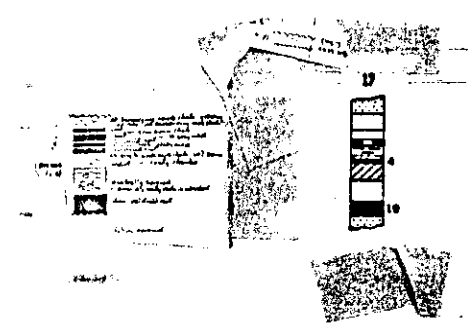
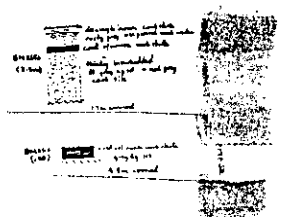
760

740

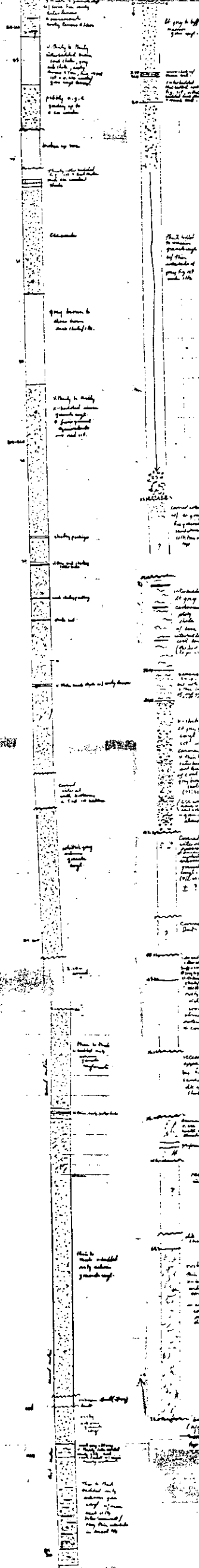
720

700

680



660  
640  
620  
600  
580  
560  
540  
520  
500  
480  
460  
440  
420  
400



This well  
is composed  
of the  
material  
of the  
gray to buff  
shale.

Some of the  
material  
is of a gray  
color and  
is very  
fine.

Material  
of gray  
color  
is  
of fine  
grain  
and is  
very  
soft.

Material  
of gray  
color  
is  
of fine  
grain  
and is  
very  
soft.

Material  
of gray  
color  
is  
of fine  
grain  
and is  
very  
soft.

Material  
of gray  
color  
is  
of fine  
grain  
and is  
very  
soft.

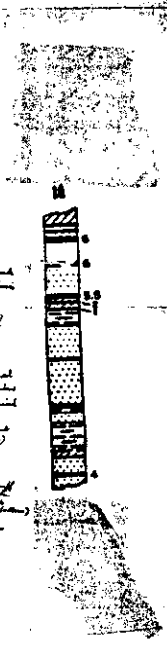
Material  
of gray  
color  
is  
of fine  
grain  
and is  
very  
soft.

Material  
of gray  
color  
is  
of fine  
grain  
and is  
very  
soft.

Material  
of gray  
color  
is  
of fine  
grain  
and is  
very  
soft.

Material  
of gray  
color  
is  
of fine  
grain  
and is  
very  
soft.

Material  
of gray  
color  
is  
of fine  
grain  
and is  
very  
soft.



Material  
of gray  
color  
is  
of fine  
grain  
and is  
very  
soft.

Material  
of gray  
color  
is  
of fine  
grain  
and is  
very  
soft.

Material  
of gray  
color  
is  
of fine  
grain  
and is  
very  
soft.

Material  
of gray  
color  
is  
of fine  
grain  
and is  
very  
soft.