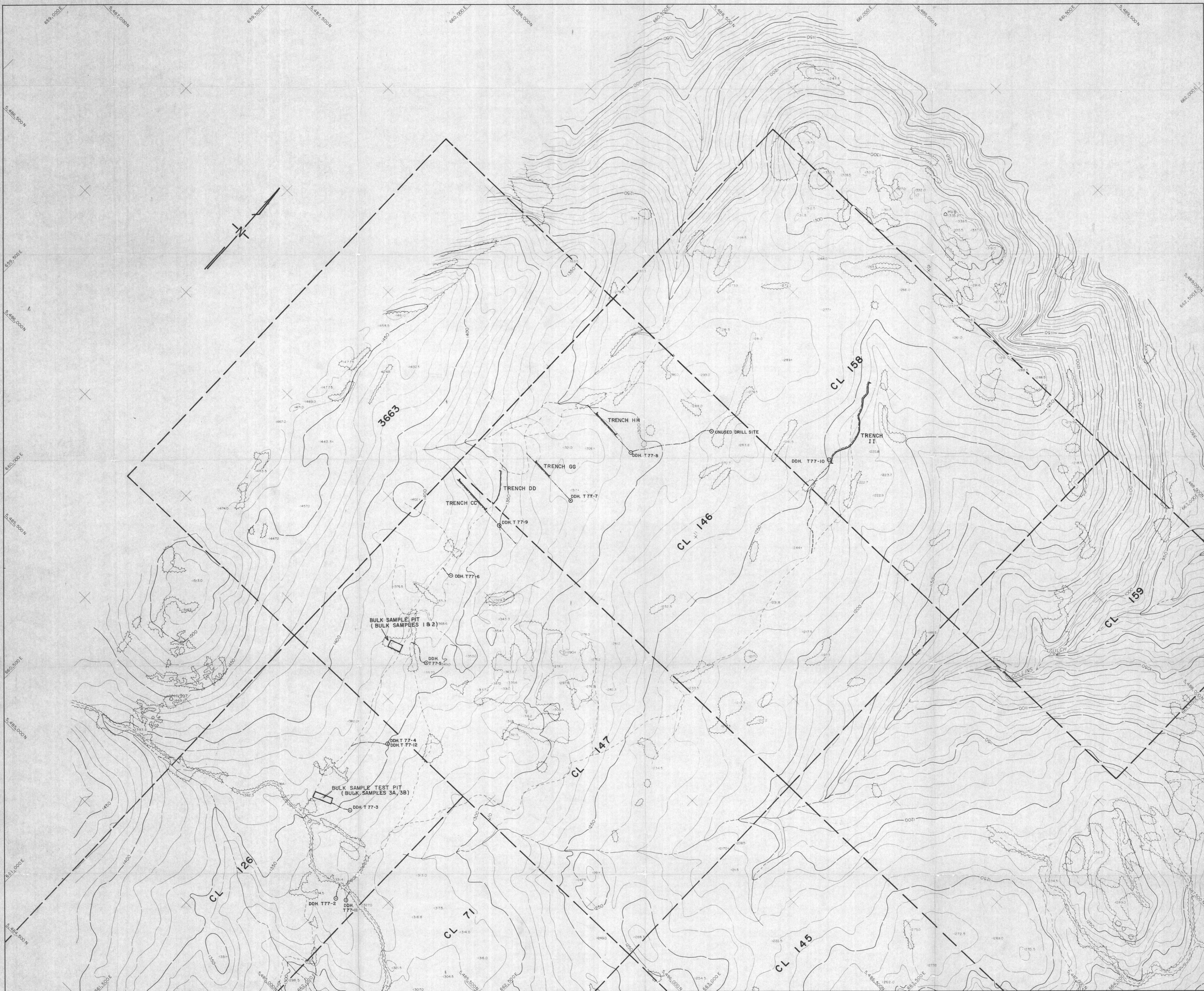


SM-TULAMEEN 77(2)A

MAPS, CROSS-SECTIONS
POLARIZATION SURVEY,
RESISTIVITY SURVEY
1977-1978

200 (5)



LEGEND

- | | | | |
|----------------------|----------|----------|--|
| CONTROL POINTS | △ HV 993 | RIVERS | |
| SPOT ELEVATIONS | 130.5 | TRAILS | |
| OLD IRON PINS | ○ OIP | ROADS | |
| PHOTO CENTRE | + 10 | TREES | |
| INTERMITTENT STREAMS | | CONTOURS | |

LEGEND

- Pre-existing roads
- New roads (1977 field season)
- Diamond drill site
- New backhoe trenches (some since backfilled)
- Coal licence boundary

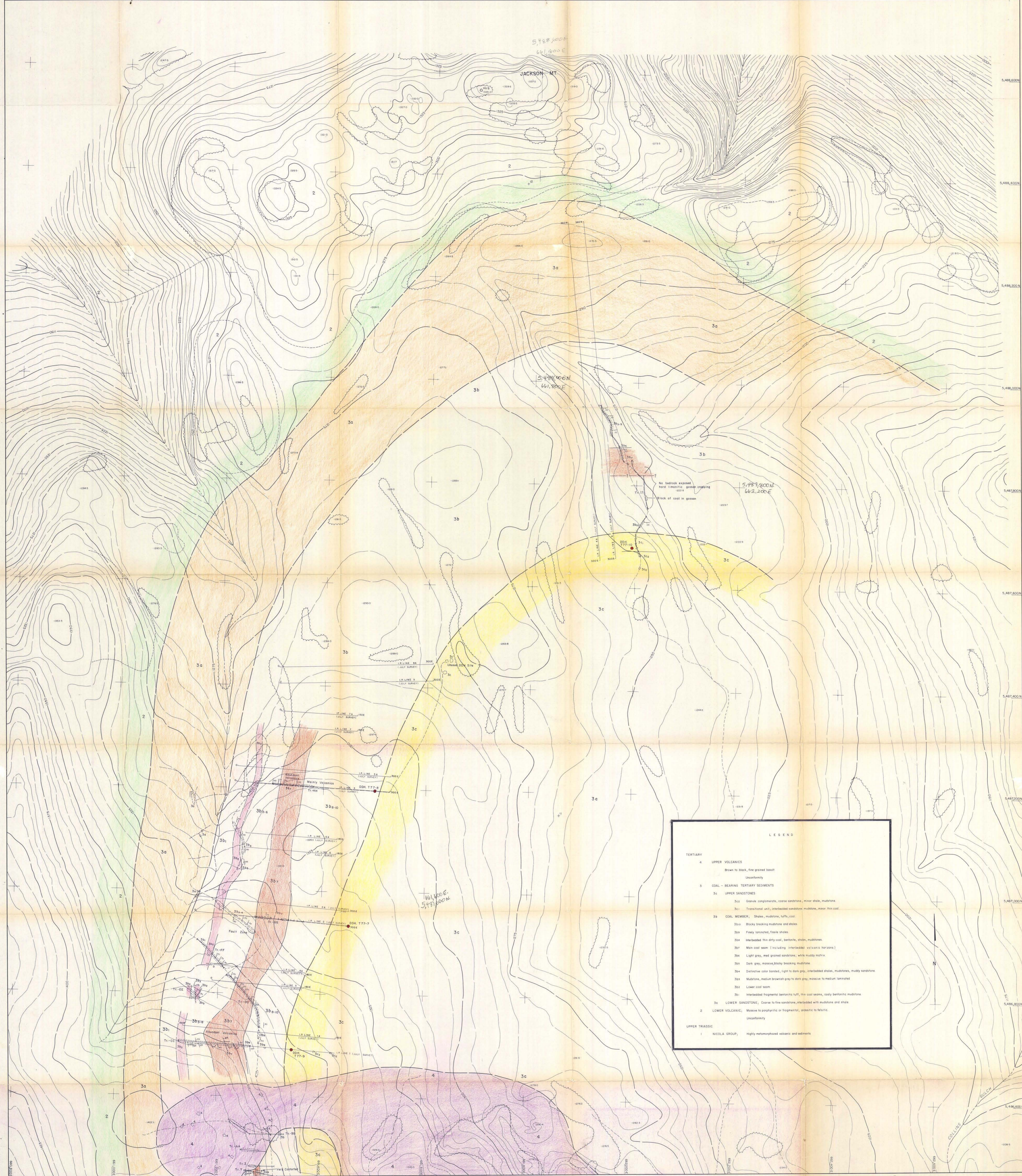
SCALE 1:5000



bunnett resource surveys ltd.
REGISTERED PHOTOGRAMMETRISTS - SURVEYORS

LOCATIONS OF 1977 PHYSICAL WORK SITES

5H-TULAMEEN 77(2)A.
 Cyprus Anvil Mining Corporation
200 TULAMEEN COAL PROJECT
 PHYSICAL WORK SITES
 Date of Photography: June 17, 1977
 Contour Interval: 10 meters
 MI
 COMPILER: T. J. A. DATE: MARCH 21, 1978
 SHEET 1 OF 2



LEGEND

TERTIARY	
4	UPPER VOLCANICS Brown to black, fine grained basalt Unconformity
3 COAL-BEARING TERTIARY SEDIMENTS	
3c	UPPER SANDSTONES 3c1 Granule conglomerate, coarse sandstone, minor shale, mudstone 3c2 Transitional unit, interbedded sandstone, mudstone, minor thin coal
3b	COAL MEMBER: Shales, mudstone, luffs, coal 3b1 Blocky breaking mudstone and shales 3b2 Finely laminated, fissile shales 3b3 Interbedded thin dry coal, bentonite, shales, mudstones 3b4 Main coal seam (including interbedded volcanic horizons) 3b5 Light grey, med grained sandstone, with muddy matrix 3b6 Dark grey, massive blocky breaking mudstone 3b7 Distinctive color banded, light to dark grey, interbedded shales, mudstones, muddy sandstone 3b8 Mudstone, medium brownish grey to dark grey, massive to medium laminated 3b9 Lower coal seam 3b10 Interbedded fragmental bentonite luff, thin coal seams, caddy bentonite mudstone
3a	LOWER SANDSTONE: Coarse to fine sandstone, interbedded with mudstone and shale
2	LOWER VOLCANIC: Massive to porphyritic or fragmental, andesitic to felsitic Unconformity
UPPER TRIASSIC	
1	NICOLA GROUP: Highly metamorphosed volcanic and sediments

LEGEND

CONTROL POINTS	△ HV 993	RIVERS	—
SPOT ELEVATIONS	100-5	TRAILS	—
OLD IRON PINS	0 QIP	ROADS	—
PHOTO CENTRE	+ 10	TREES	—
INTERMITTENT STREAMS	—	CONTOURS	—

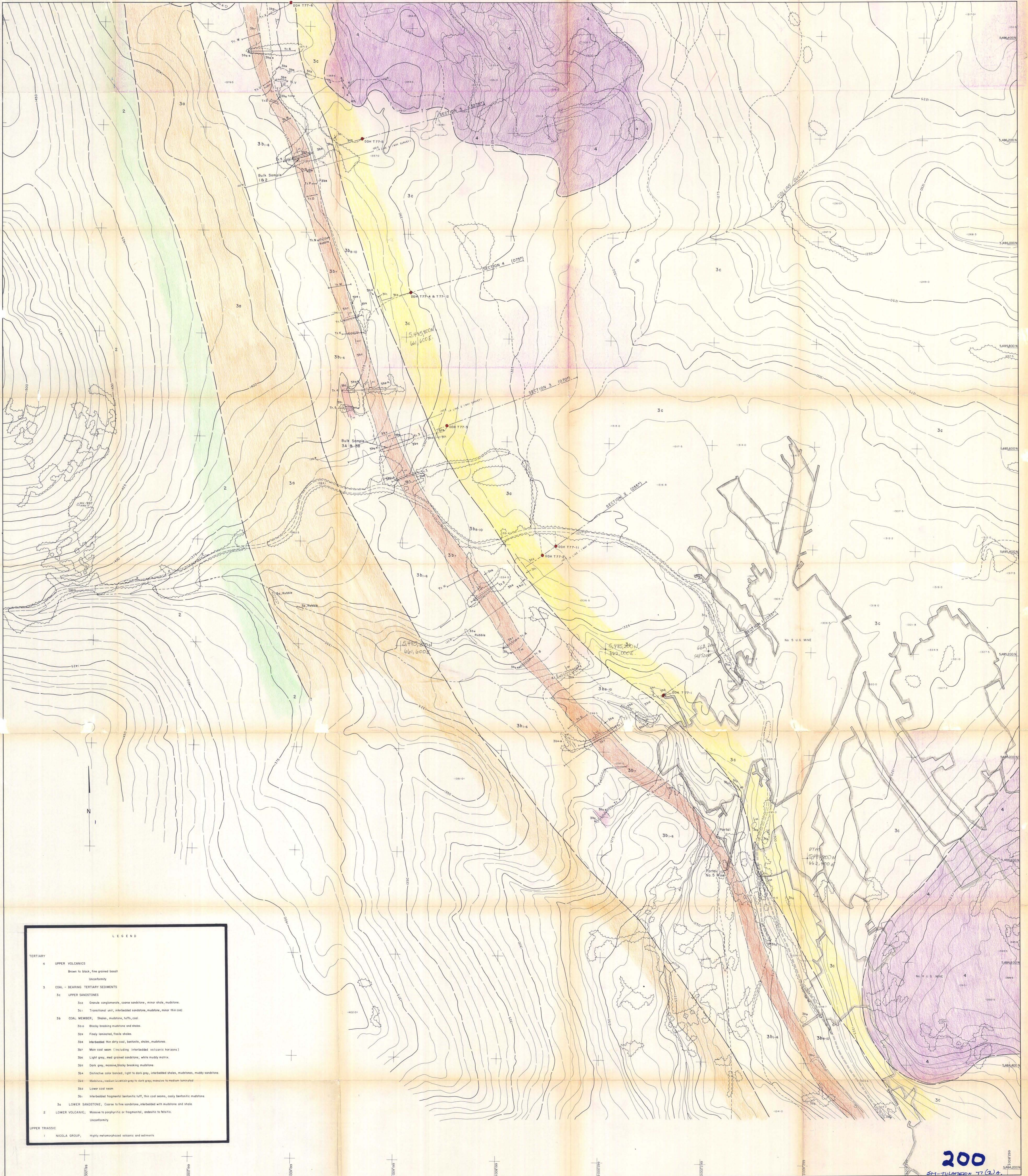
SCALE 1:2000
METRES 0 100 200 300

COMPILED BY
bennett resource surveying inc.

LEGEND
GEOLOGICAL CONTACT (defined, assumed)
BEDDING ATTITUDE
FAULT
OUTCROP
TRENCH
DIAMOND DRILL HOLE

Cyprus Anvil Mining Corporation
TULAMEEN COAL PROJECT
GEOLOGY MAP
Date of Photography: June 17, 1977
Contour Interval: 5 meters
COMPILED BY: T.S.A. DATE: MARCH 21, 1978
SHEET 1 OF 2
SM-TULAMEEN-77(2)A

200
FIGURE 4



LEGEND

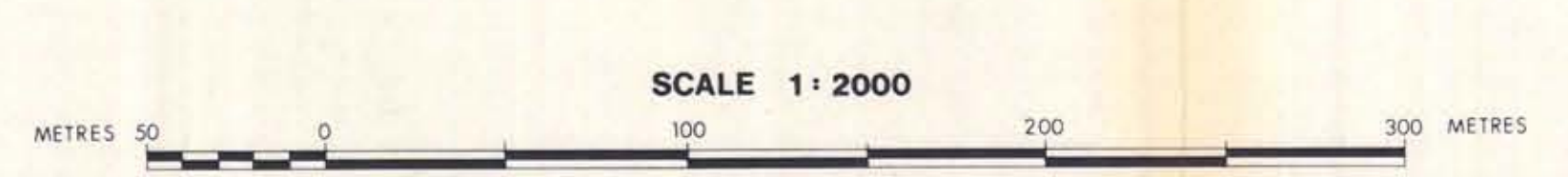
TERTIARY	
4	UPPER VOLCANICS Brown to black, fine grained basalt Unconformity
3 COAL - BEARING TERTIARY SEDIMENTS	
3c UPPER SANDSTONES	
3c2	Granule conglomerate, coarse sandstone, minor shale, mudstone.
3c1	Transitional unit, interbedded sandstone, mudstone, minor thin coal.
3b COAL MEMBER, Shales, mudstone, silt, coal.	
3b10	Blocky breaking mudstone and shales.
3b9	Finely laminated, fissile shales.
3b8	Interbedded thin dirty coal, bentonite, shales, mudstones.
3b7	Main coal seam (including interbedded volcanic horizons)
3b6	Light grey, med grained sandstone, white muddy matrix.
3b5	Dark grey, massive, blocky breaking mudstone.
3b4	Distinctive color banded, light to dark grey, interbedded shales, mudstones, muddy sandstone.
3b3	Mudstone, medium to coarse grey to dark grey, massive to medium laminated.
3b2	Lower coal seam.
3b1	Interbedded fragmental bentonitic silt, thin coal seams, coaly bentonitic mudstone.
3a LOWER SANDSTONE, Coarse to fine sandstone, interbedded with mudstone and shale.	
2 LOWER VOLCANIC, Massive to porphyritic or fragmental, andesitic to felsitic. Unconformity	
UPPER TRIASSIC	
1	NICOLA GROUP, Highly metamorphosed volcanic and sediments.

LEGEND

CONTROL POINTS	△ HV 993	RIVERS	—
SPOT ELEVATIONS	195.4	TRAILS	—
OLD IRON PINS	○	ROADS	—
PHOTO CENTRE	+	TREES	—
INTERMITTENT STREAMS	—	CONTOURS	—

LEGEND

GEOLOGICAL CONTACT (defined, assumed)	—
BEDDING ATTITUDE	—
FAULT	—
OUTCROP	—
TRENCH	—
DIAMOND DRILL HOLE	○



COMPILED BY
Bennett Resource Agency Ltd.

200

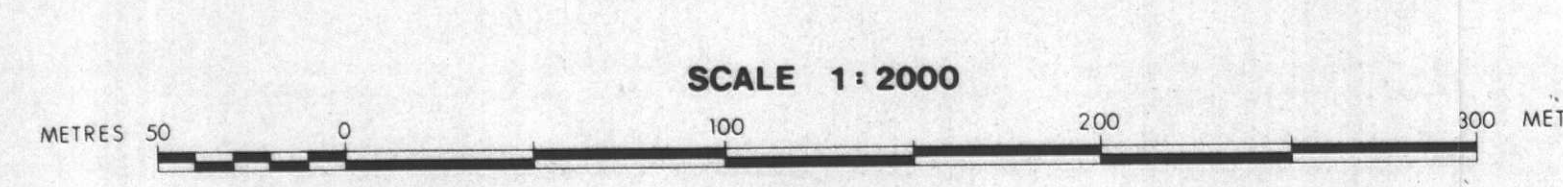
SCM-TULAMEEN 77(2)A

Cyprus Anvil Mining Corporation
TULAMEEN COAL PROJECT
GEOLOGY MAP
Date of Photography: June 17, 1977
Contour Interval: 5 meters
COMPILED BY T.J.S. DATE MARCH 21, 1978
SHEET 2 OF 2



LEGEND

- | | | | |
|----------------------|----------|----------|---|
| CONTROL POINTS | △ HV 993 | RIVERS | — |
| SPOT ELEVATIONS | ○ 101.5 | TRAILS | — |
| OLD IRON PINS | ○ 10 | ROADS | — |
| PHOTO CENTRE | + | TREES | — |
| INTERMITTENT STREAMS | — | CONTOURS | — |



COMPILED BY
benetton resource services Ltd.

200

SM-TULAMEEN 7(2)-A
 Cyprus Anvil Mining Corporation
TULAMEEN COAL PROJECT
 PRELIMINARY OPEN PIT DESIGN
 Date of Photography: June 17, 1977
 Contour Interval: 5 meters
 COMPILED BY: T. J. A. DATE: MARCH 23, 1978
SHEET 2 OF 2