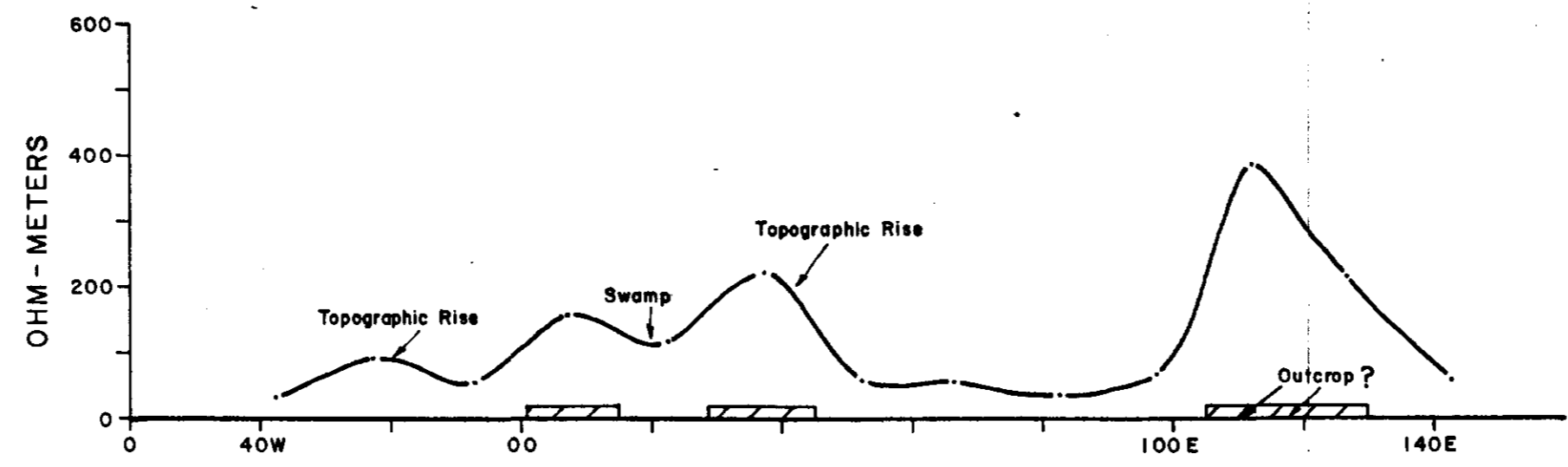


200

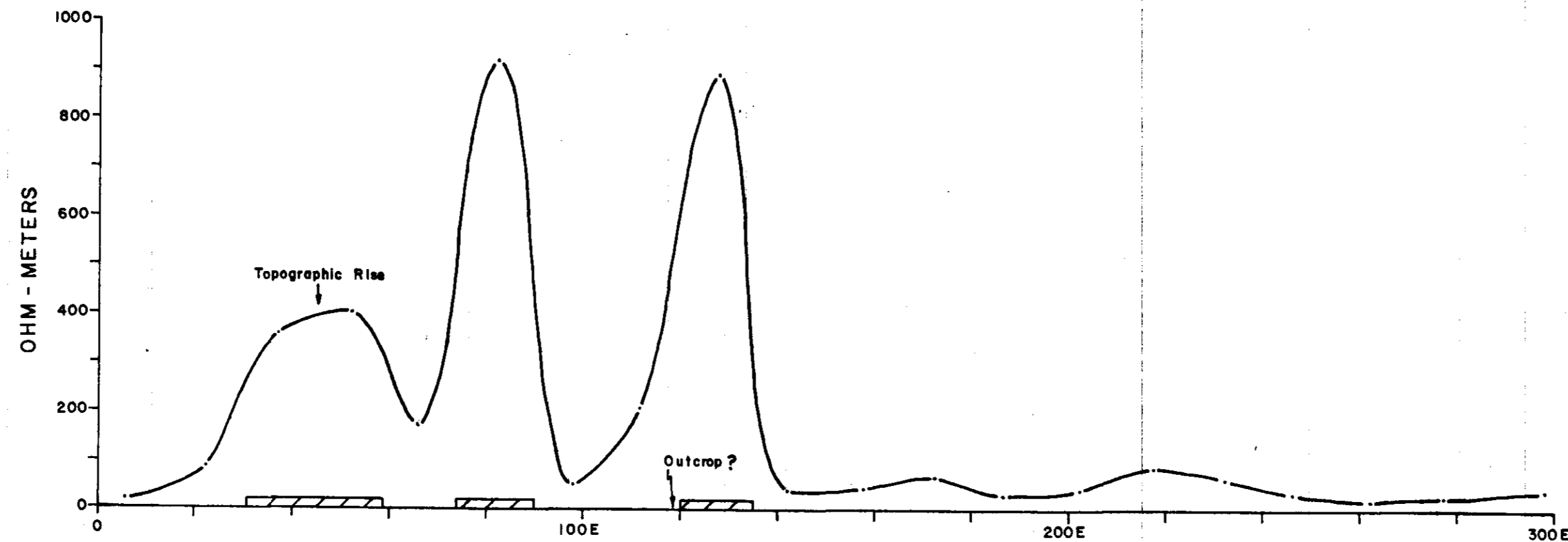
SM-TULAMEEN 77(2)A.

CYPRUS ANVIL MINING CORPORATION
 TULAMEEN COAL PROJECT
 LINE 4
 RESISTIVITY SURVEY
 PROFILES OF APPARENT RESISTIVITY
 JULY GRID
 PETER E. WALCOTT & ASSOC. LTD.
 MAY - JULY 1977
 J. Delamater
 MAP No. 32





L9
200
 SM-TULAMEEN 77(2)A.
 CYPRUS ANVIL MINING CORPORATION
 TULAMEEN COAL PROJECT
 LINE 7
 RESISTIVITY SURVEY
 PROFILES OF APPARENT RESISTIVITY
 JULY GRID
 PETER E. WALCOTT & ASSOC. LTD.
 MAY - JULY 1977
J. Palmer
 MAP No. 34



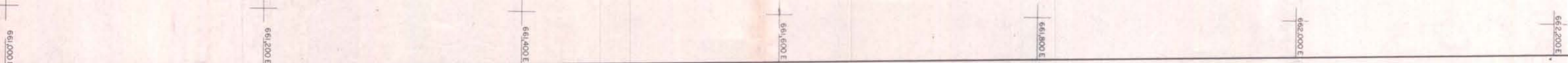
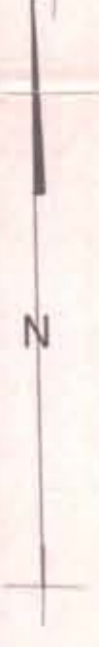
200⁽¹⁰⁾

SM-TULAMEEN T1(2)A.
 CYPRUS ANVIL MINING CORPORATION
 TULAMEEN COAL PROJECT
 LINE 8
 RESISTIVITY SURVEY
 PROFILES OF APPARENT RESISTIVITY
 JULY GRID
 PETER E. WALCOTT & ASSOC. LTD.
 MAY-JULY 1977
 MAP No. 35

DATA FOR CONSTRUCTION OF RESERVE-STRIP RATIO GRAPHS

(Sections 1 - 5)

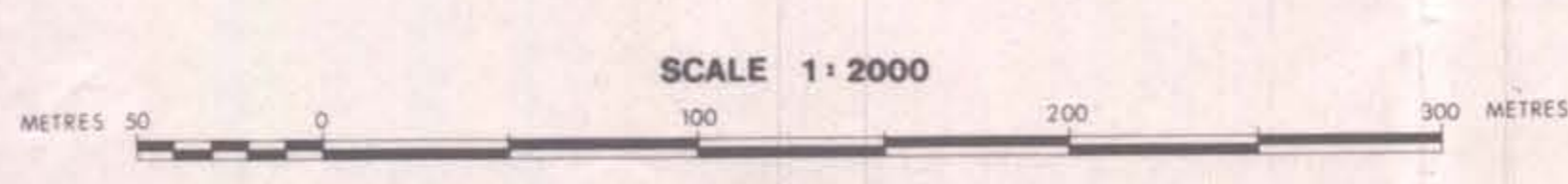
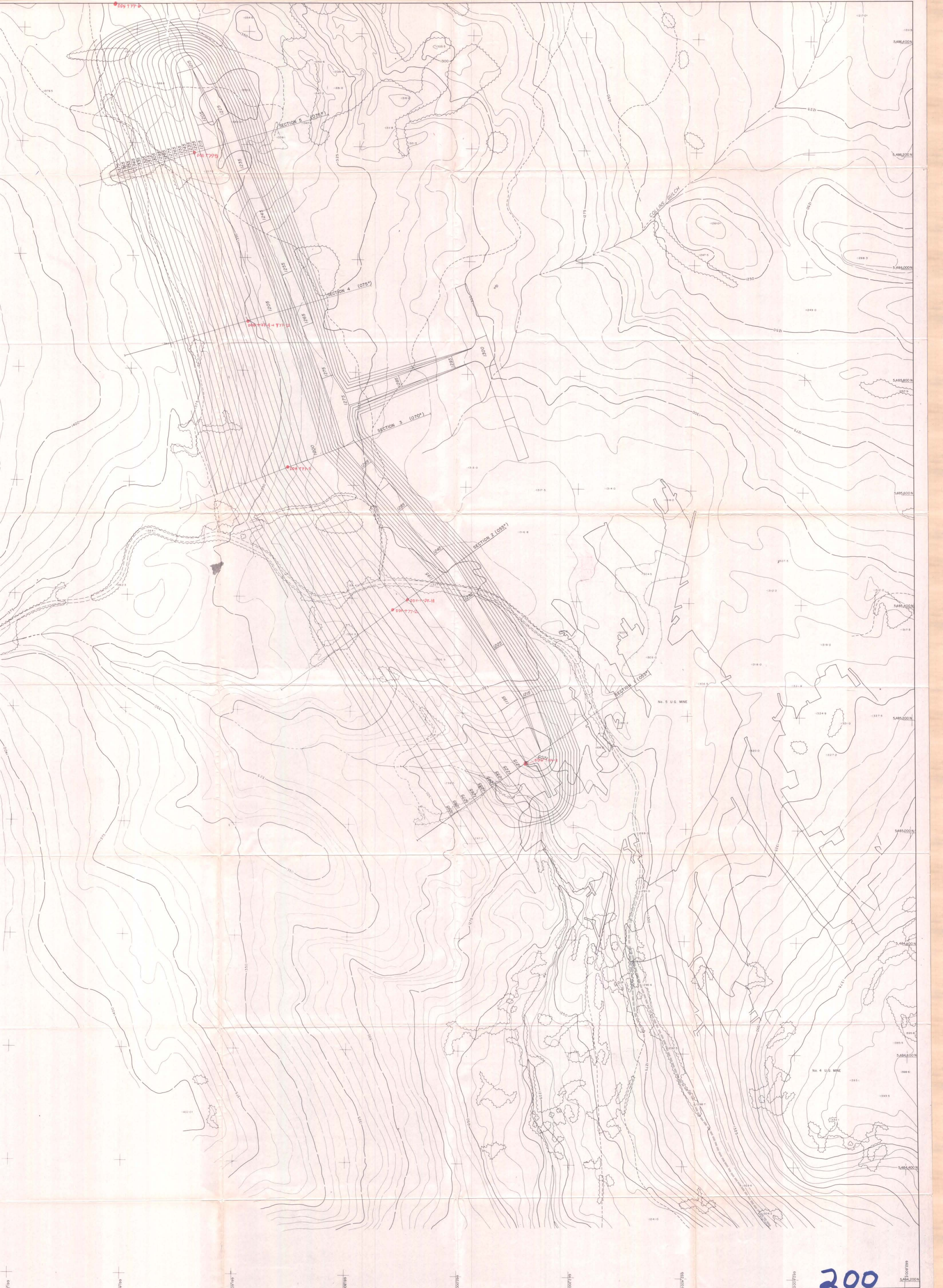
Pit Depth (m)	Coal (m ³)	Coal (Tonnes in Situ) (Raw Coal Density 1.64)	Recoverable Coal (Tonnes) (in Situ -5%)	Overburden (m ³)	S.R. (m ³ /Re Tonne)
<u>Section 1 (DDH T-77-1)</u>					
20	550	902	857	240	0.28
40	1,200	1,968	1,870	1,040	0.56
60	1,850	3,034	2,882	3,230	1.12
80	2,500	4,100	3,895	7,150	1.84
100	3,150	5,166	4,908	12,440	2.53
120	3,800	6,232	5,920	18,800	3.18
140	4,450	7,298	6,933	26,340	3.80
160	5,100				
180	5,750				
<u>Section 2 (DDH T-77-2, T-77-11)</u>					
20	605	992	943	265	0.28
40	1,265	2,075	1,971	1,410	0.72
60	1,925	3,157	2,999	3,350	1.12
80	2,585	4,239	4,027	6,075	1.51
100	3,300	5,412	5,141	10,180	1.98
120	4,155	6,814	6,473	15,590	2.41
140	5,015	8,225	7,814	21,970	2.81
160	5,875	9,635	9,153	28,980	3.17
180					
<u>Section 3 (DDH T-77-3)</u>					
20	550	902	857	170	0.20
40	1,155	1,894	1,799	965	0.54
60	1,760	2,886	2,742	2,265	0.83
80	2,365	3,878	3,685	4,145	1.12
100	2,970	4,871	4,627	6,550	1.42
120	3,575	5,863	5,570	9,620	1.73
140	4,180	6,855	6,512	13,280	2.04
160	4,785	7,847	7,455	17,595	2.36
180	5,390	8,840	8,398	22,275	2.65
200	5,995	9,832	9,340	27,925	2.99
<u>Section 4 - DDH T-77-4, T-77-12)</u>					
20	360	590	561	170	0.30
40	753	1,235	1,173	880	0.75
60	1,146	1,879	1,785	2,050	1.15
80	1,539	2,524	2,398	3,695	1.54
100	1,932	3,168	3,010	5,865	1.95
120	2,390	3,920	3,724	8,610	2.31
140	2,860	4,690	4,456	12,195	2.74
160	3,445	5,650	5,367	16,200	3.02
180					
<u>Section 5 (DDH T-77-5)</u>					
20	450	738	701	80	0.14
40	1,010	1,656	1,574	670	0.43
60	1,570	2,575	2,446	1,840	0.75
80	2,130	3,493	3,319	3,660	1.10
100	2,690	4,412	4,191	6,155	1.47
120	3,250	5,330	5,064	9,150	1.81
140	3,810	6,248	5,936	12,745	2.15
160	4,370	7,167	6,808	17,060	2.51
180	4,930	8,085	7,681	21,815	2.84
200	5,490	9,003	8,553	27,450	3.21



LEGEND

- | | | | |
|----------------------|----------|---------|--|
| CONTROL POINTS | △ HV 993 | RIVERS | |
| SPOT ELEVATIONS | ○ 130.5 | TRAILS | |
| OLD IRON PINS | ○ 010 | ROADS | |
| PHOTO CENTRE | + 10 | TREES | |
| INTERMITTENT STREAMS | | CONTOUR | |

MIA



SCALE 1:2000

COMPILED BY
hamett surveying ltd.

200

SH-TULAMEEN 77(2) A.
 Cyprus Anvil Mining Corporation

TULAMEEN COAL PROJECT
 PRELIMINARY OPEN PIT DESIGN

Date of Photography: June 17, 1977

Contour Interval: 5 meters

COMPILED BY T. J. A. DATE: MARCH 23, 1978

SHEET 2 OF 2

FIGURE 36