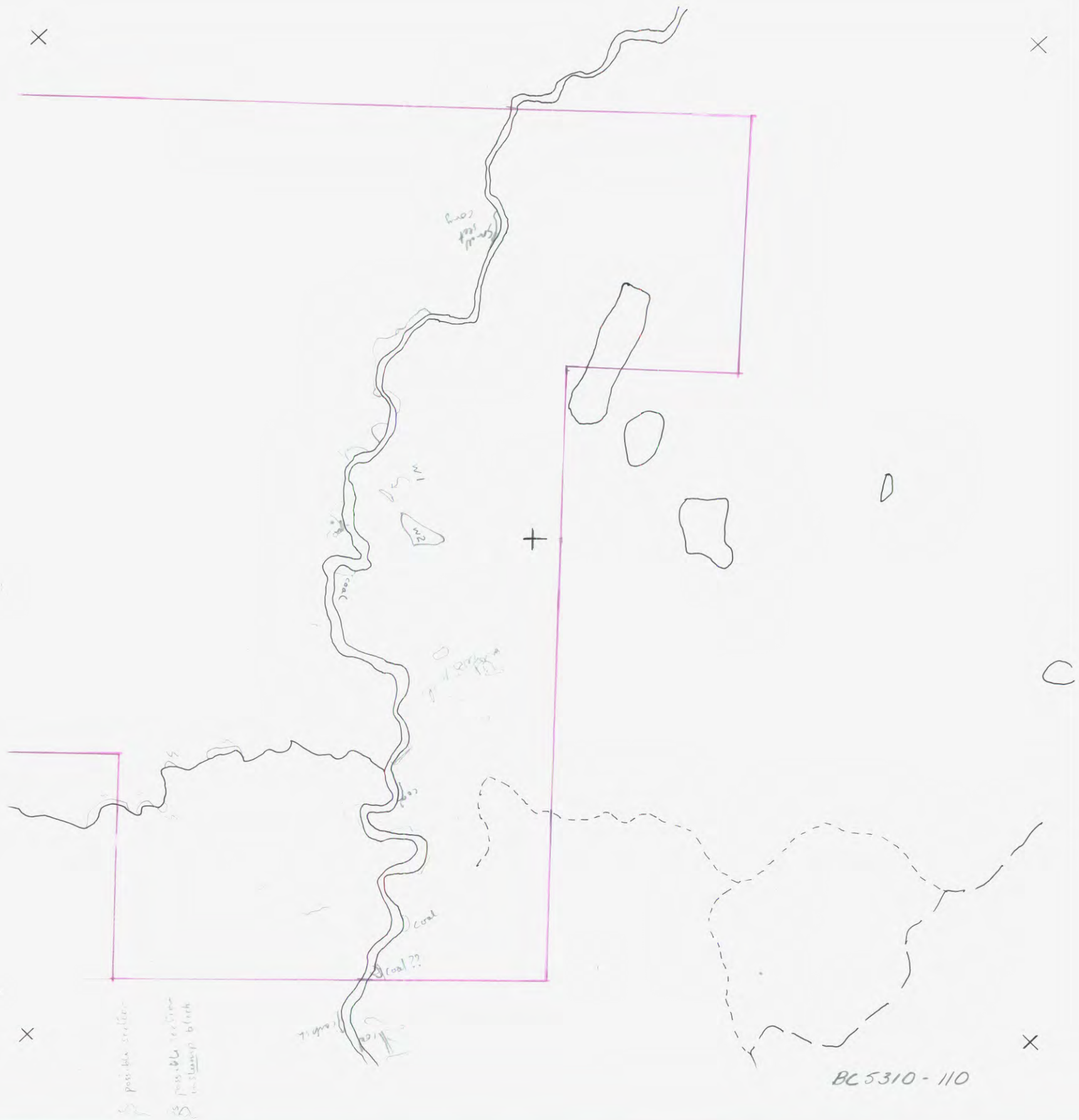
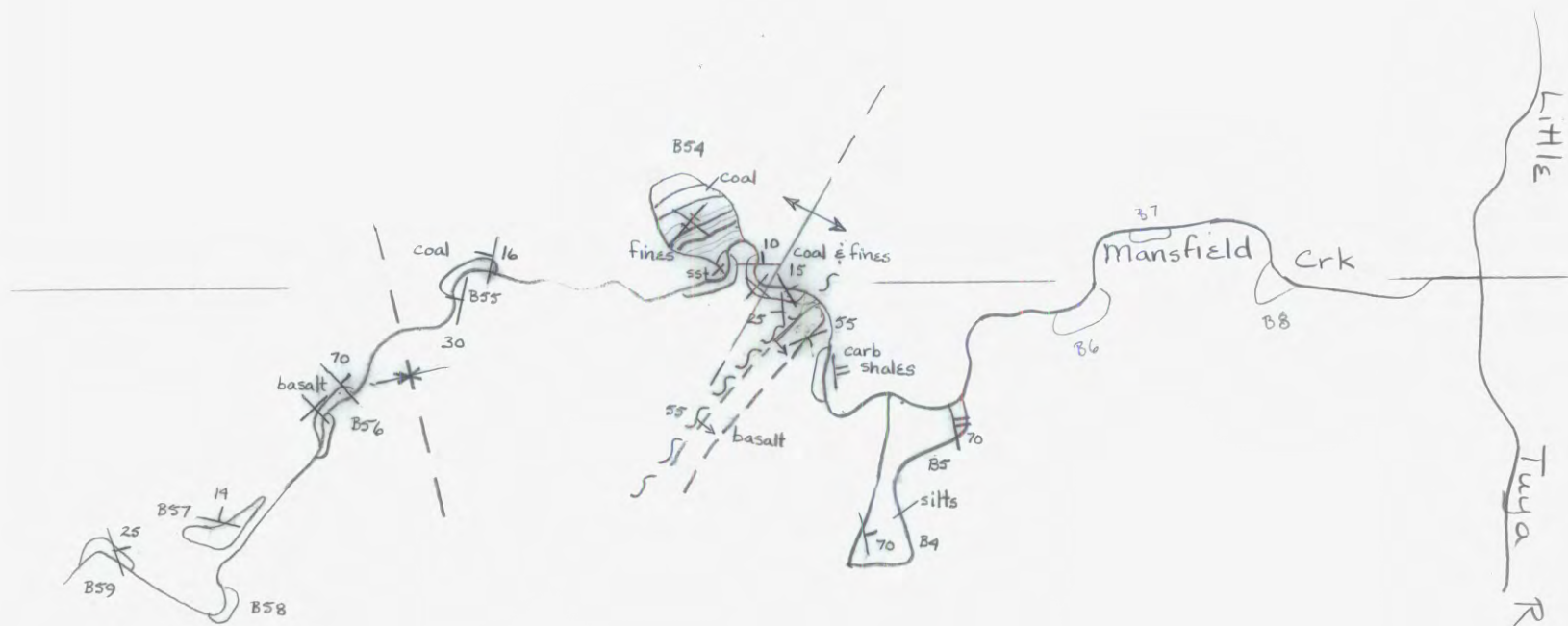


BC5310-109



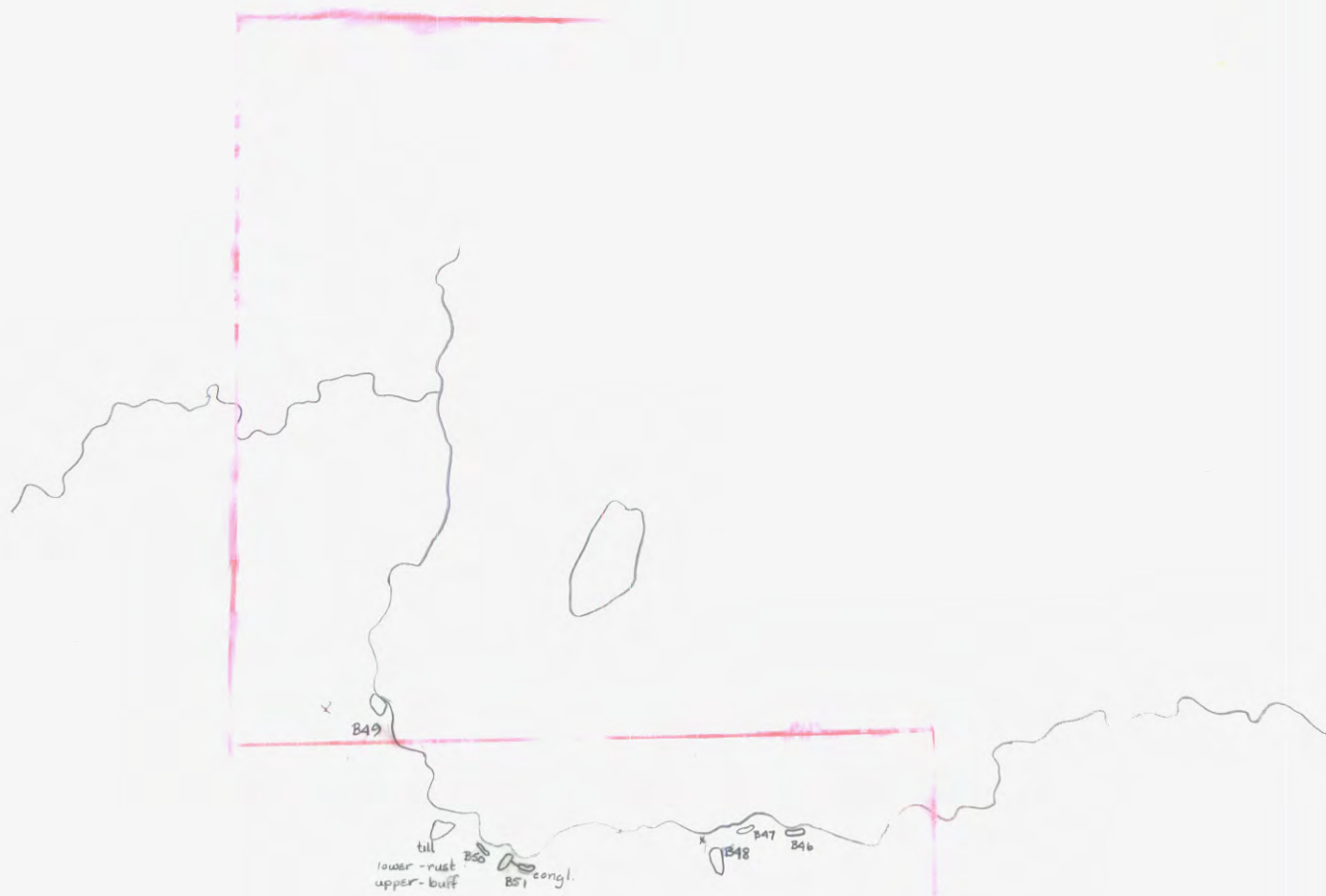
5310 - 142





← all remaining dips
for 1/2 mi West
are NE

Overlay for 1:10,000
Detail Plot (structure)
along Mansfield Crk.
JB



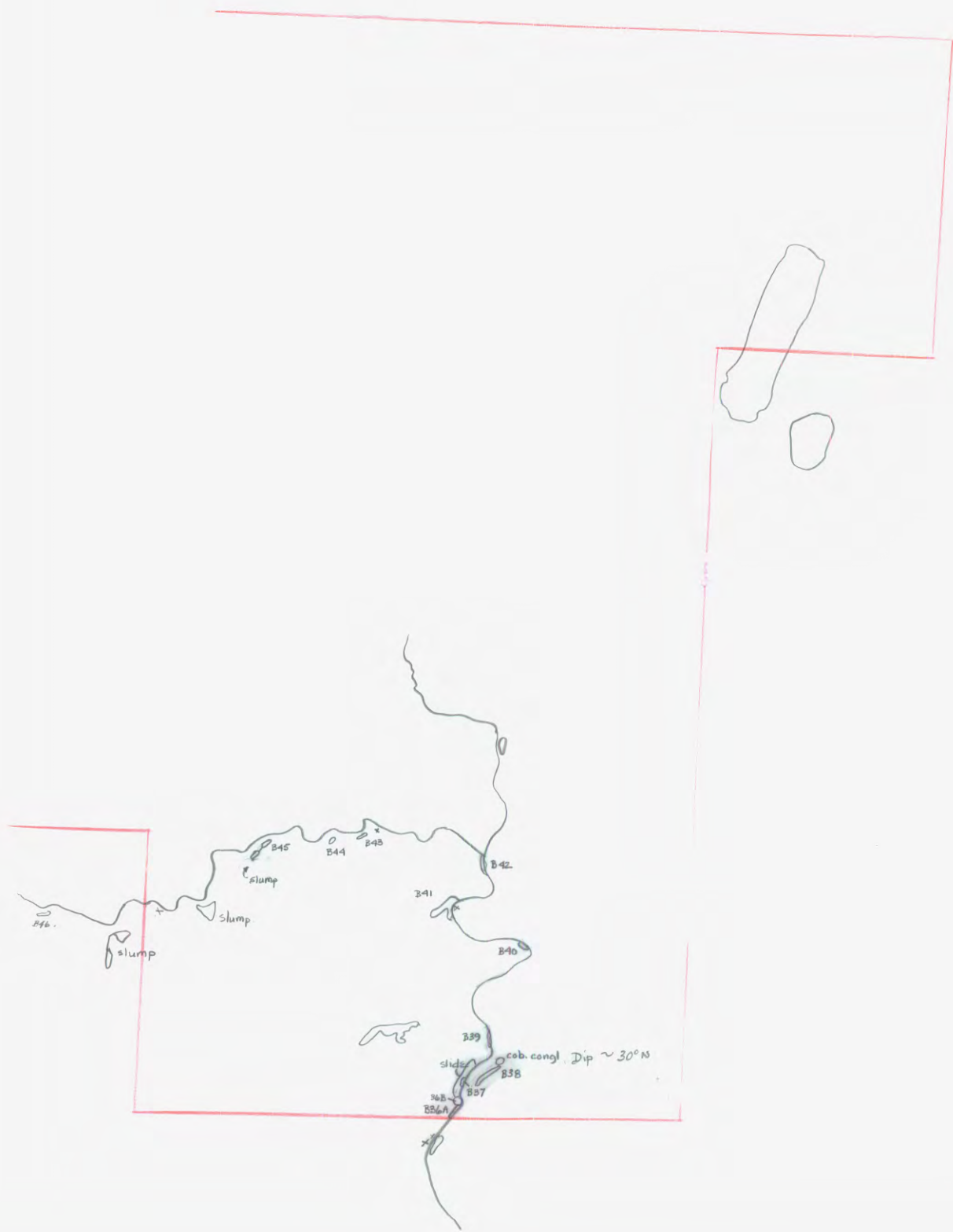
18-18-6-79
5310-143



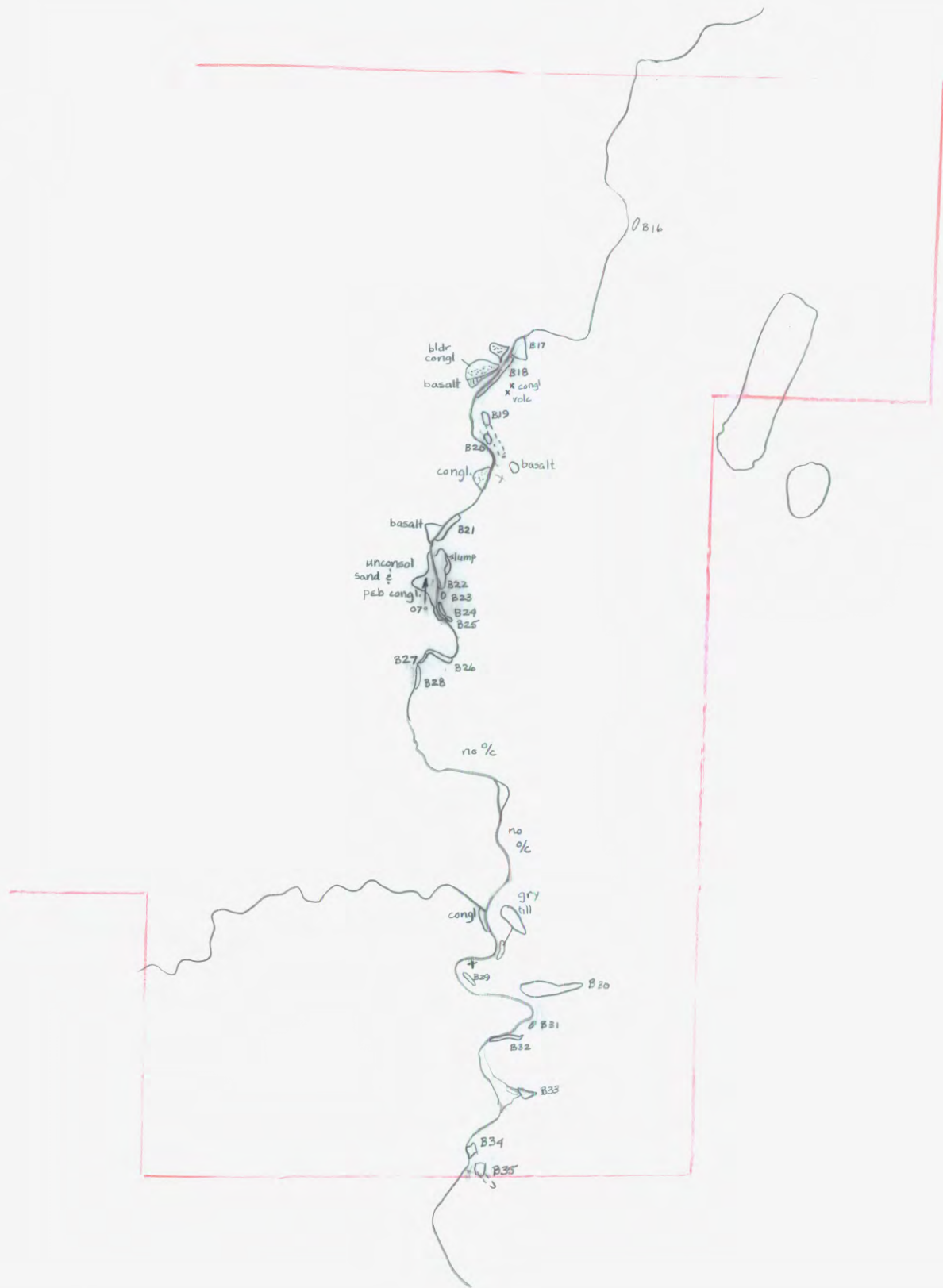
10-6-79
 9-6-79
 JB-8-6-79
 BC 5310-143



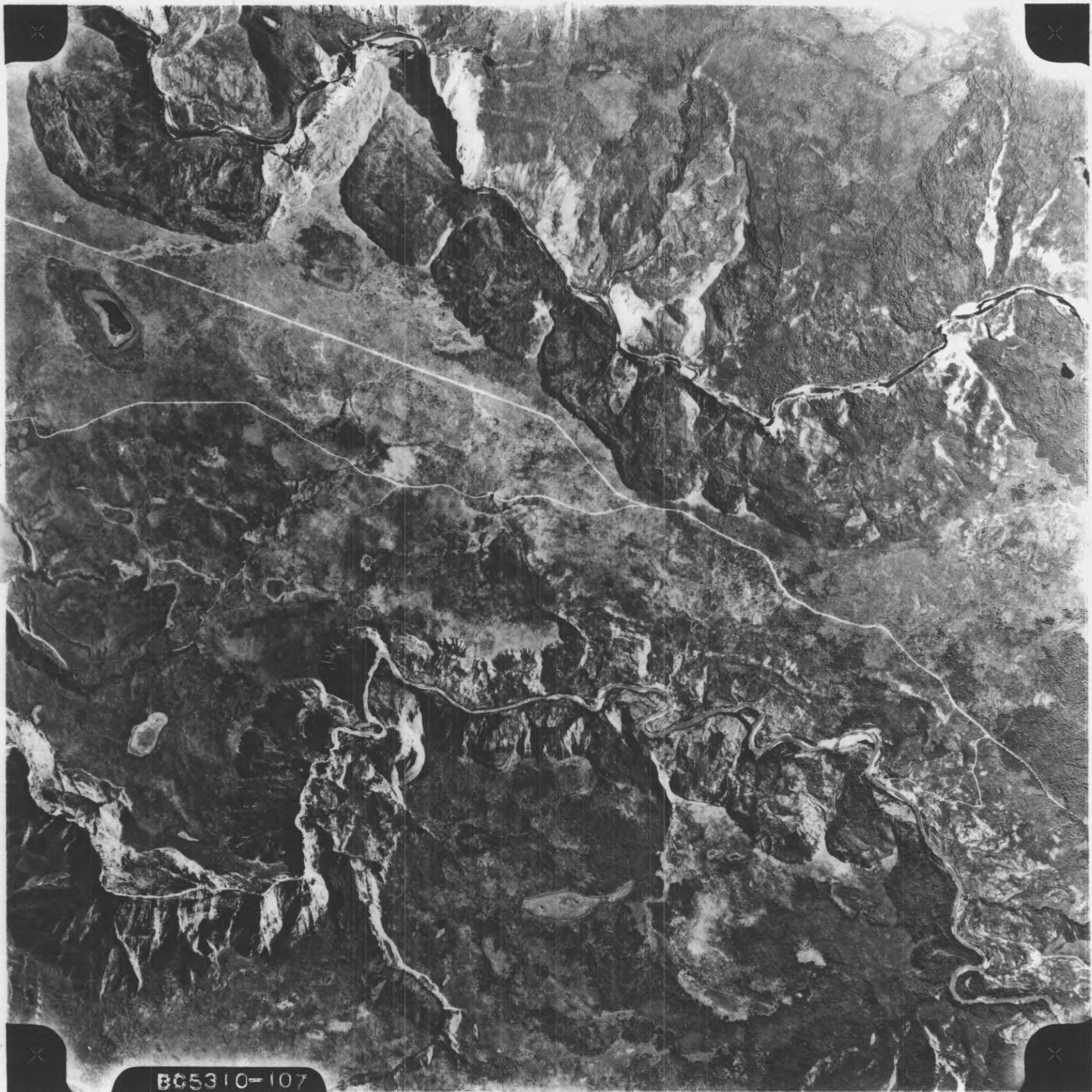
IB 23-6-79
 BC5310-142



JB-17-6-79
JB-15-6-79
5310-110



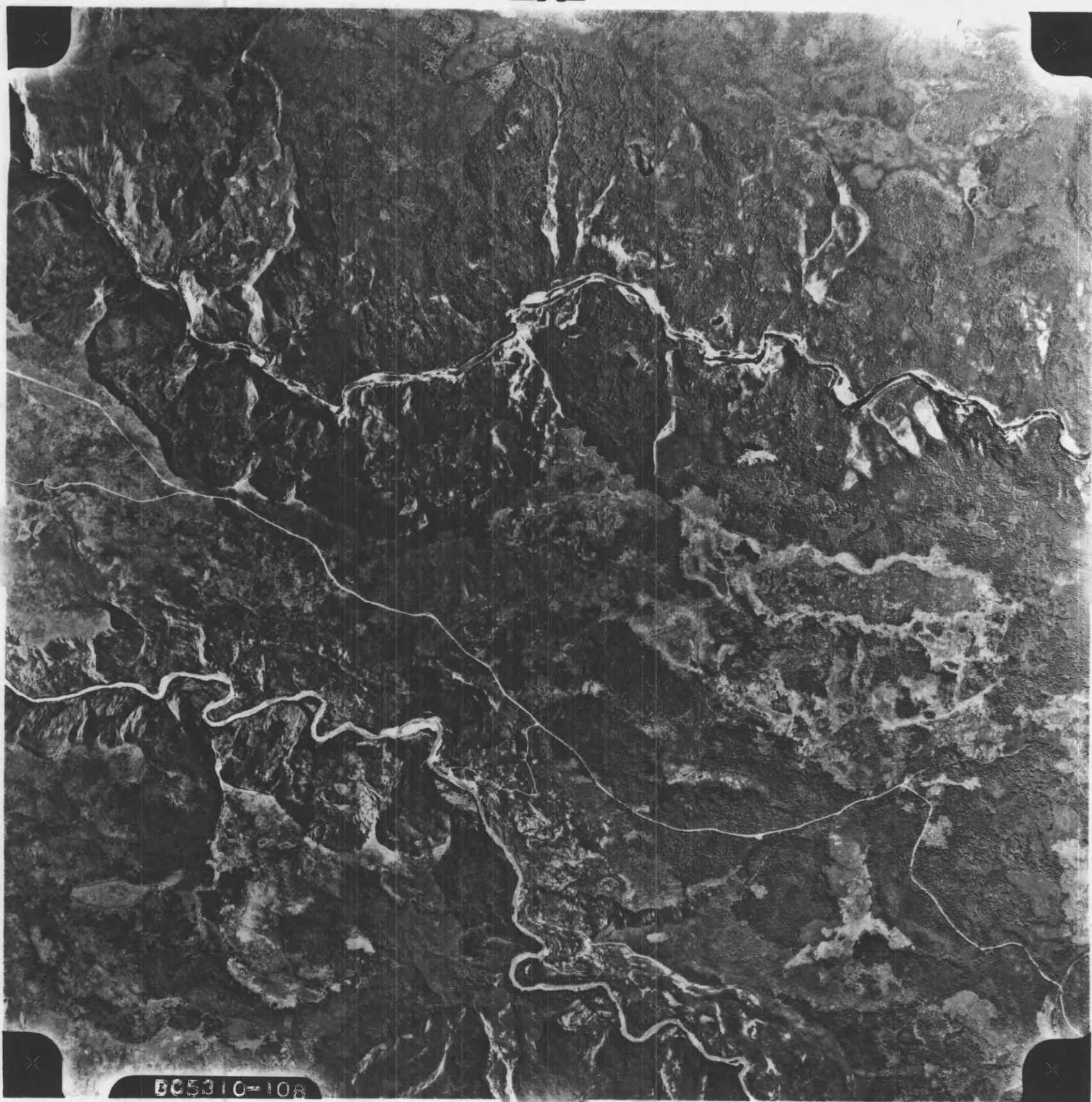
13
 14-6-79
 13-6-79
 12-6-79
 JB 11-6-79
 BC5310-110



B05310-107

ALL RIGHTS
RESERVED
14 AUG 6

N →



BC5310-108

ALL RIGHTS
RESERVED
14 AUG 65

Z

LITTLE TUYA

TUYA

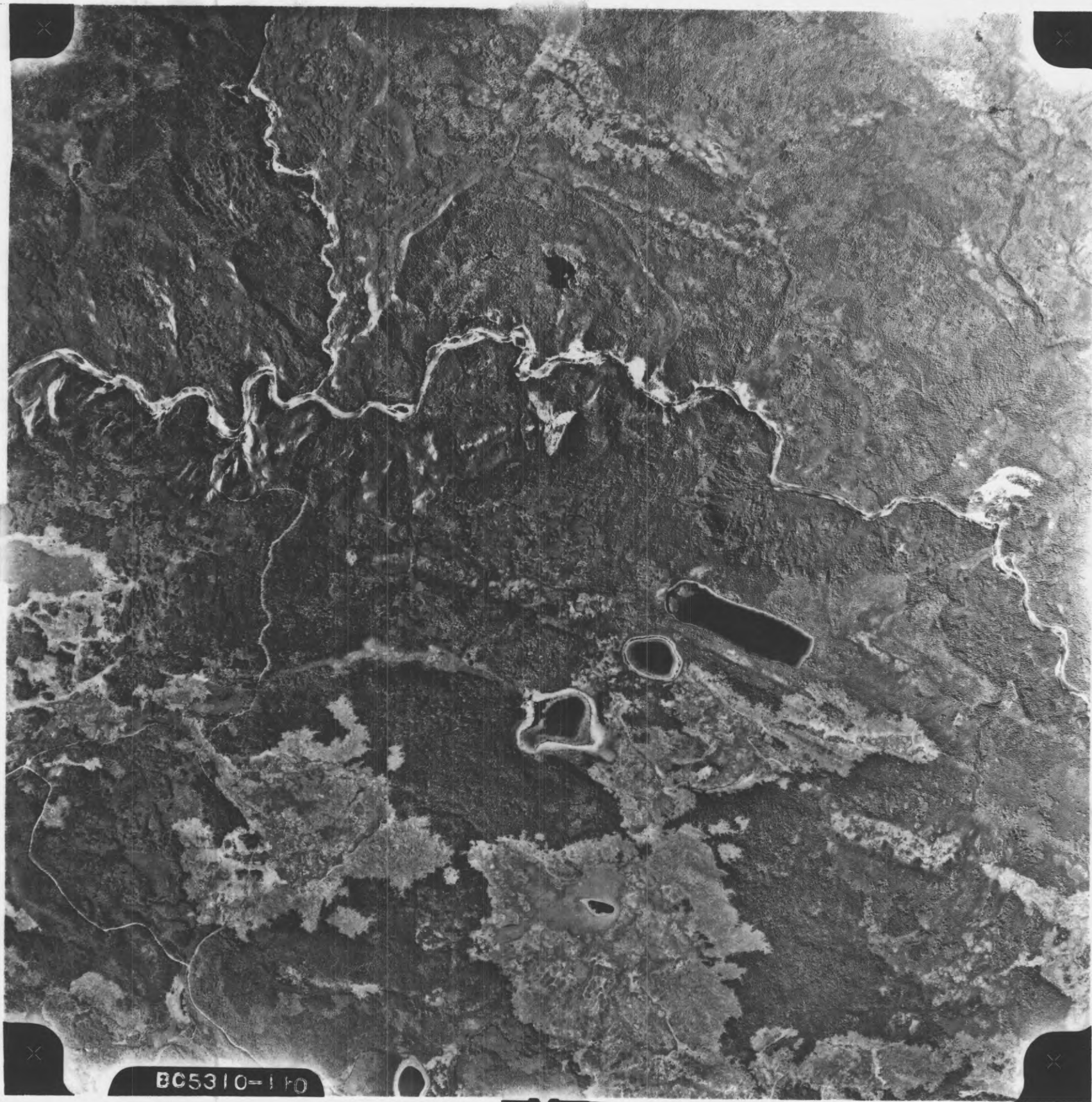
TUYA

N

865310-109

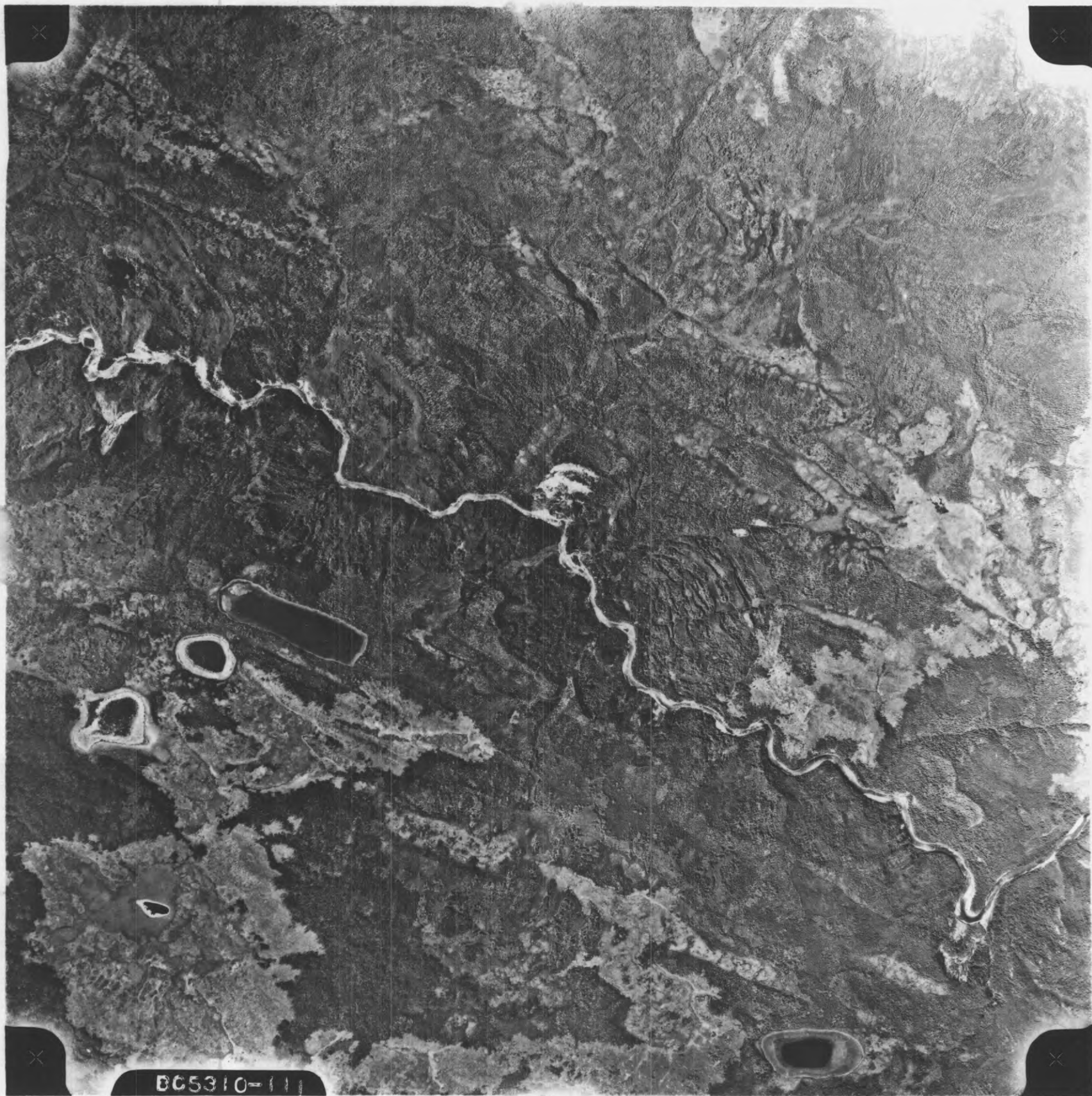
ALL RIGHTS
RESERVED
14 AUG 65

TANZILLA
RIVER



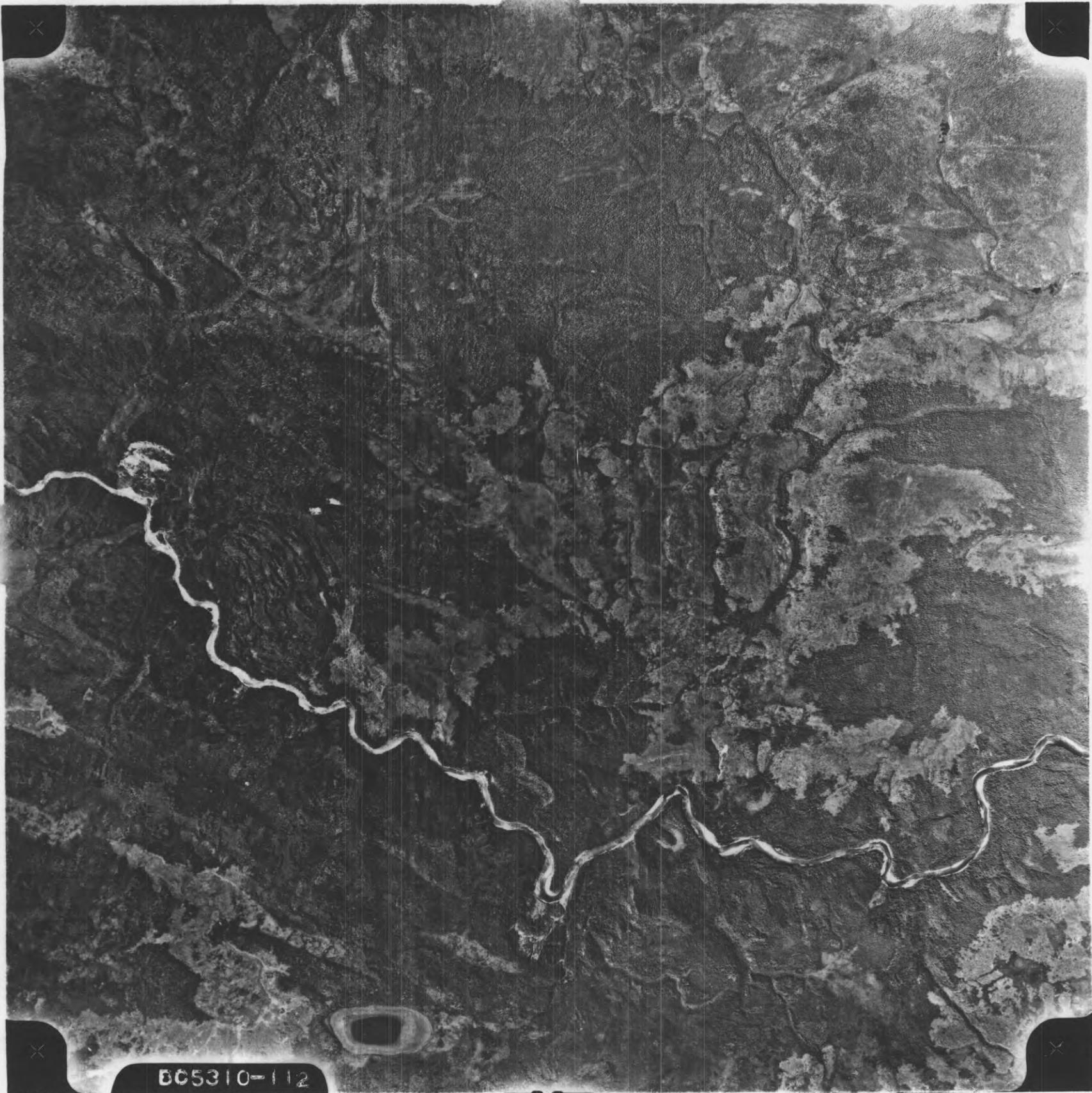
BC5310-110

ALL RIGHTS
RESERVED
14 AUG 68



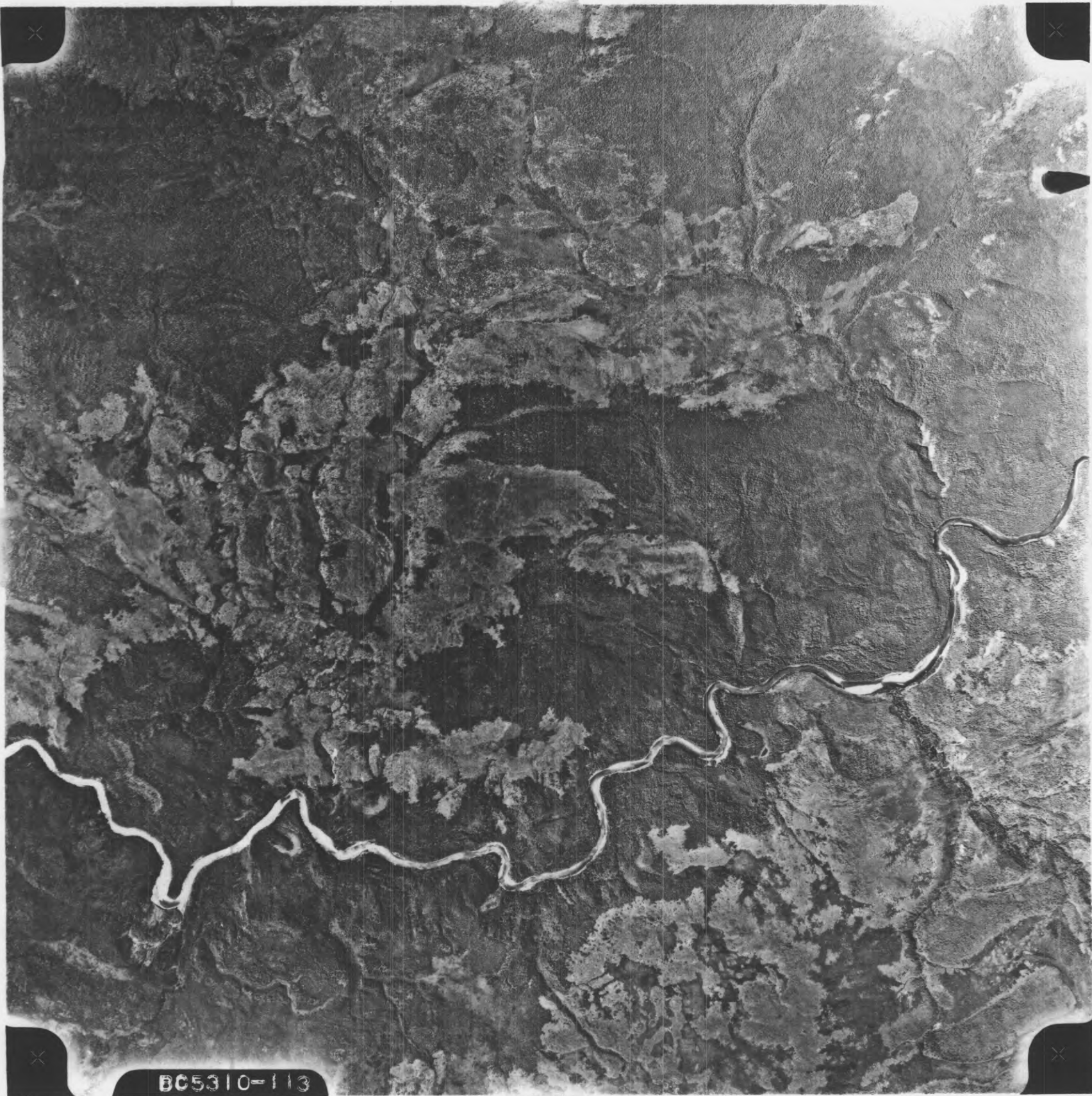
BC5310-111

ALL RIGHTS
RESERVED
14 AUG 68



BC5310-112

ALL RIGHTS
RESERVED
14 AUG 6



BC5310-113

ALL RIGHTS
RESERVED
14 AUG 65

N

BC5310-139

ALL RIGHTS
RESERVED
14 AUG 65

X

X

BC5310-140

Z

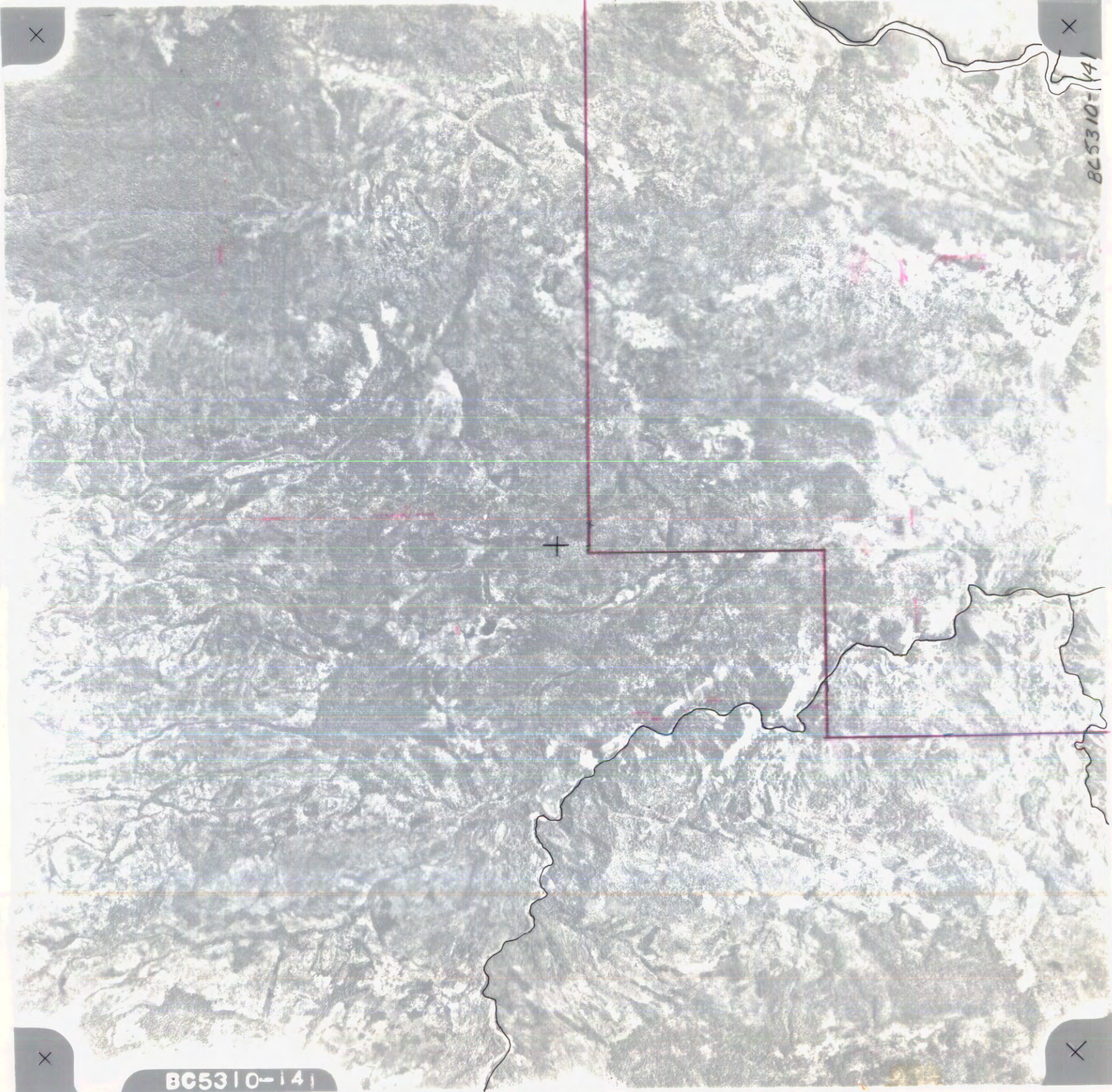
+

X

X

BC5310-140

ALL RIGHT
RESERVED
14 AUG 6



BC5310-141

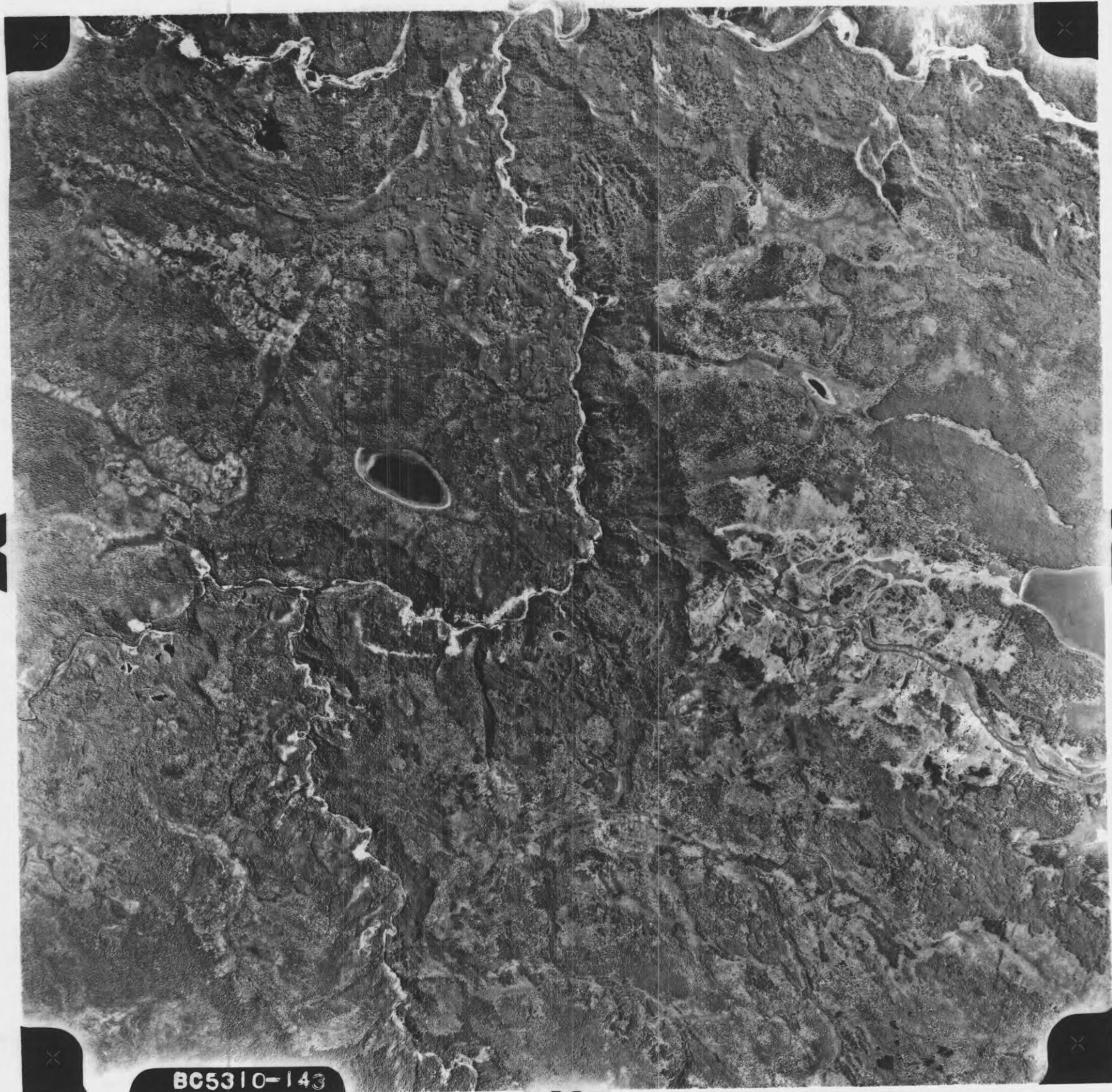
BC5310-141

ALL RIGHTS
RESERVED
14 AUG 68

Z

BC5310-142

ALL RIGHTS
RESERVED
14 AUG 68



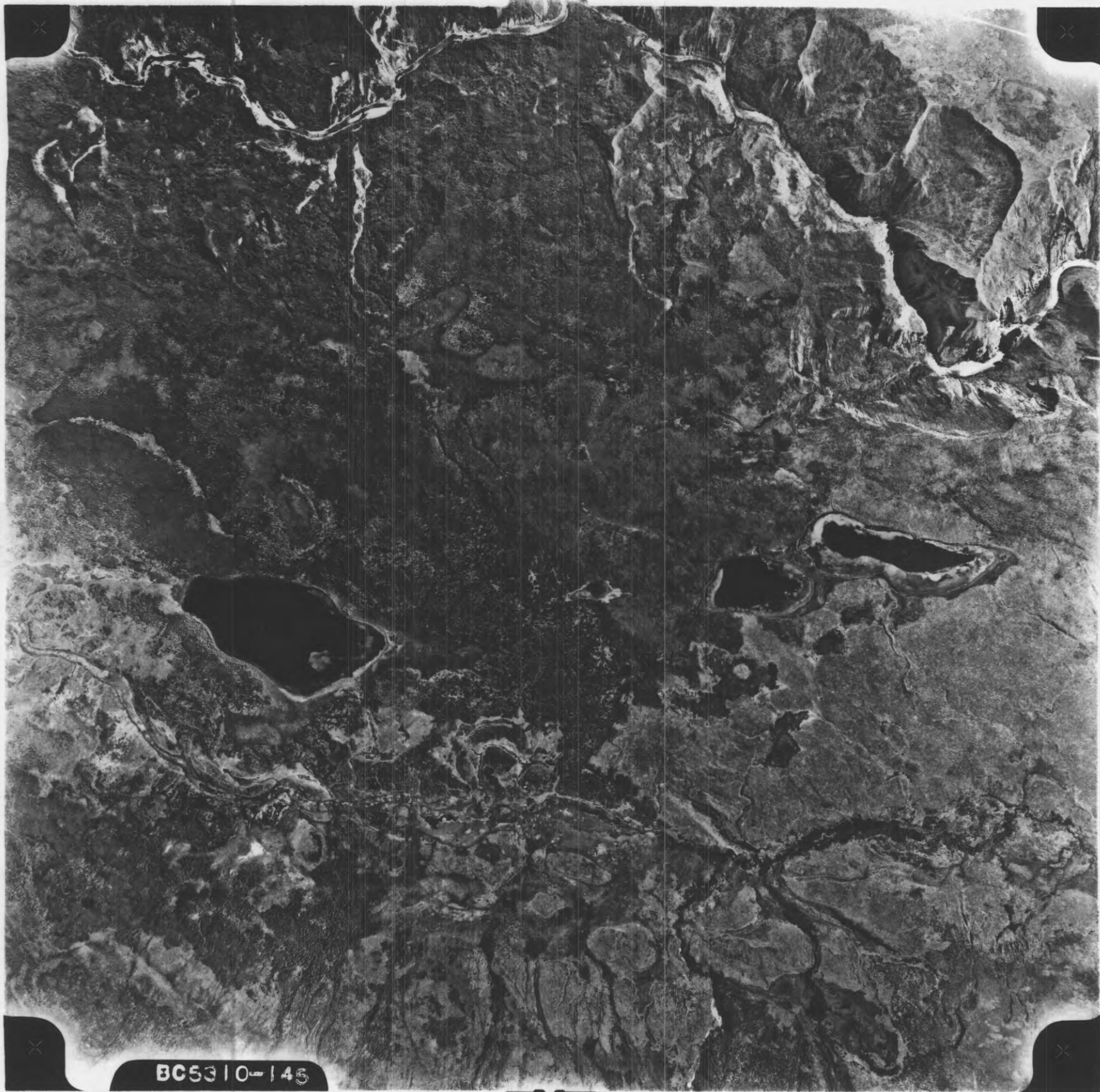
BC5310-143

ALL RIGHTS
RESERVED
14 AUG 63

BC5310 - 144

BC5310-144

ALL RIGHTS
RESERVED
14 AUG 63



N

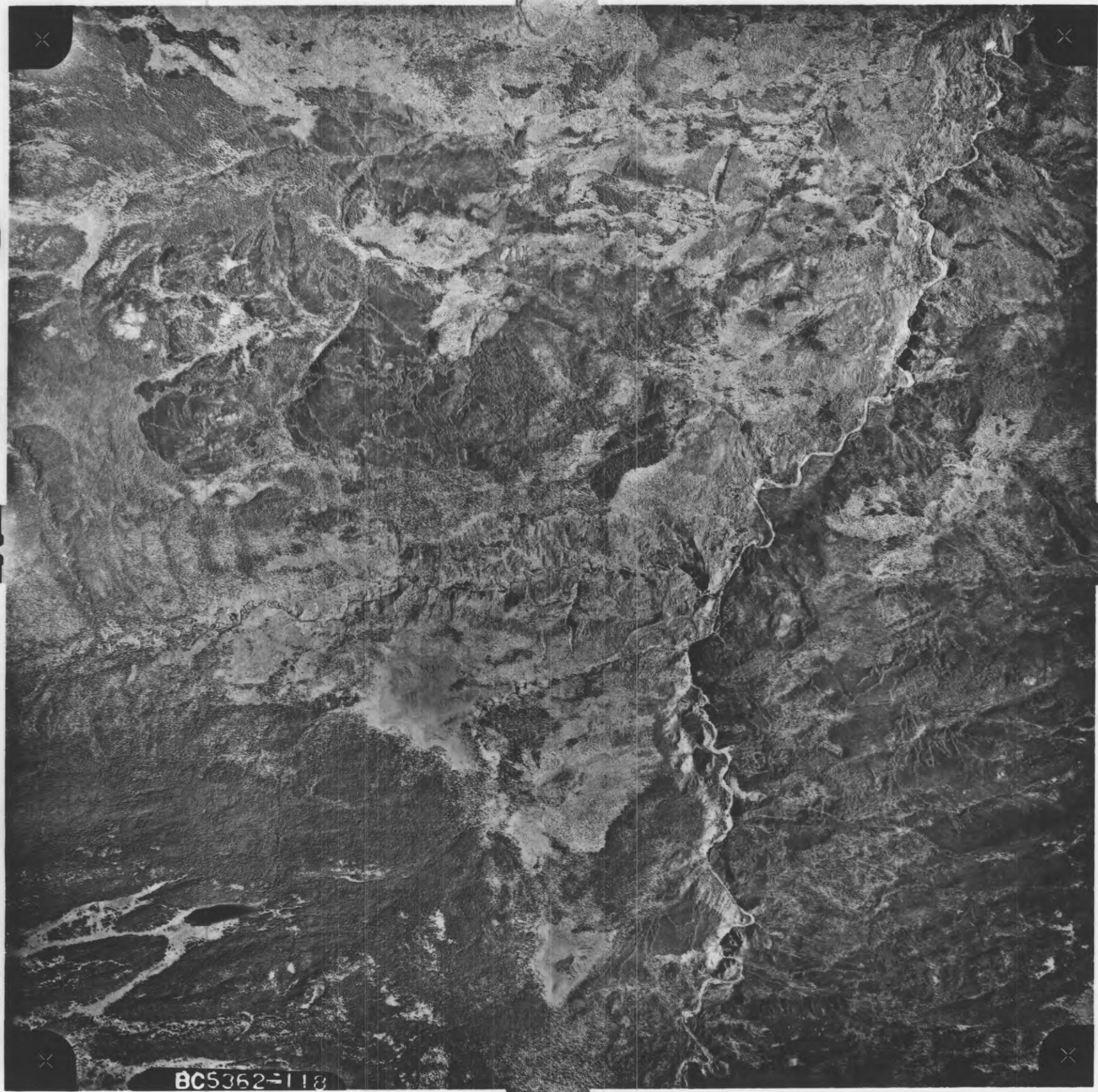
BC5310-146

ALL RIGHTS
RESERVED
14 AUG 6

Z

BC5310-146

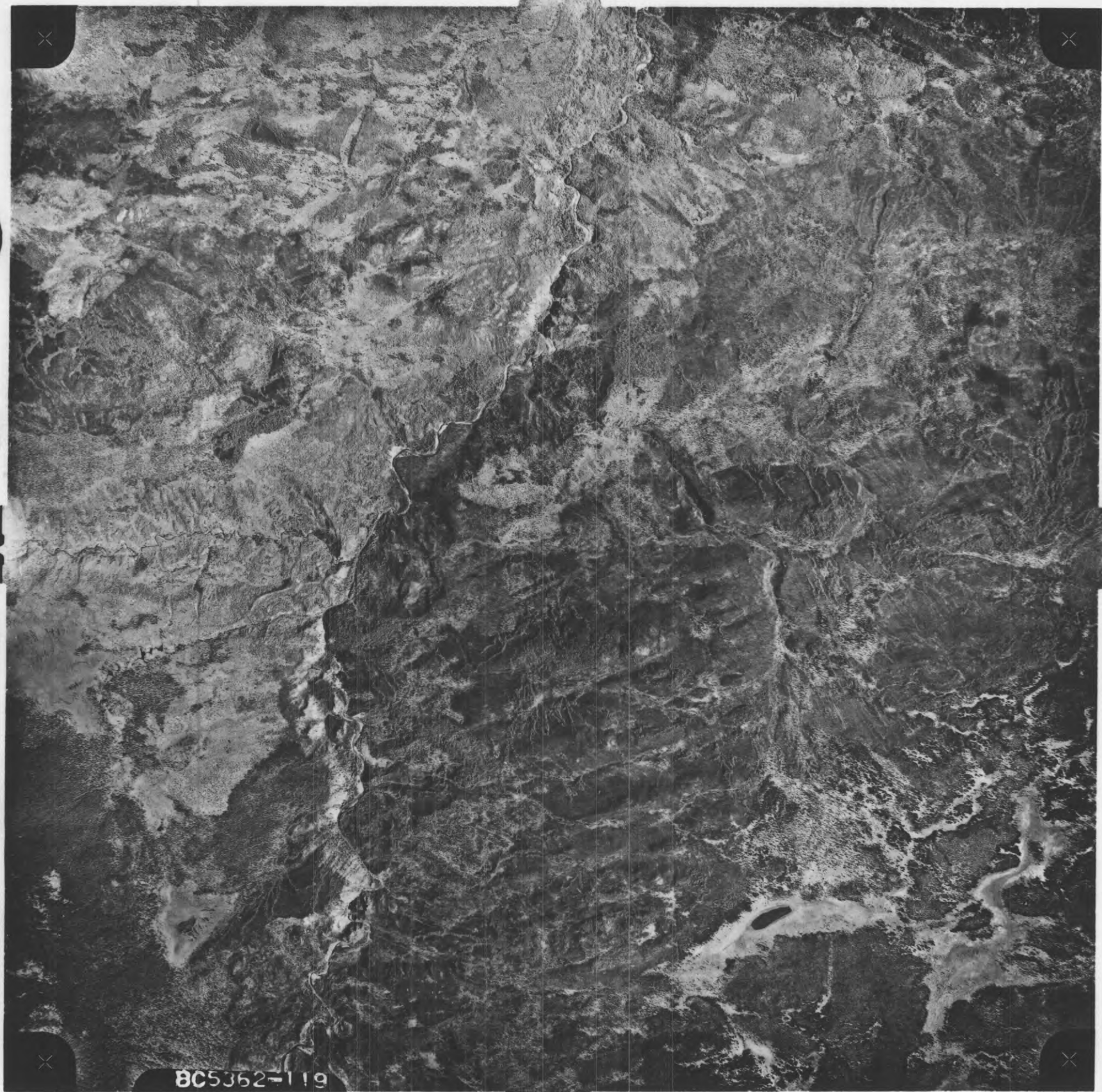
ALL RIGHTS
RESERVED
14 AUG 68



BC5362-118

AD 5334

Z

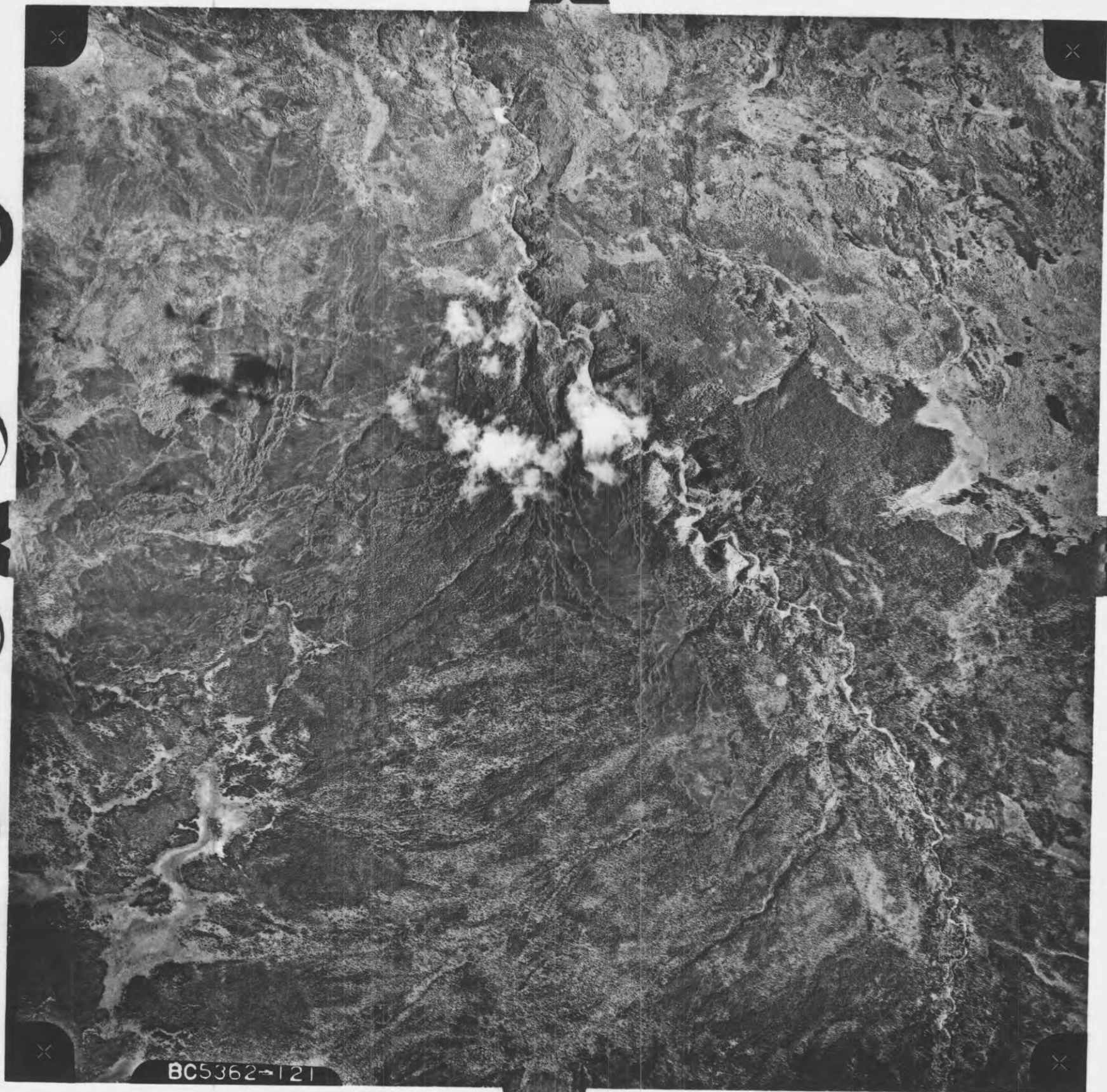


8C5362-119

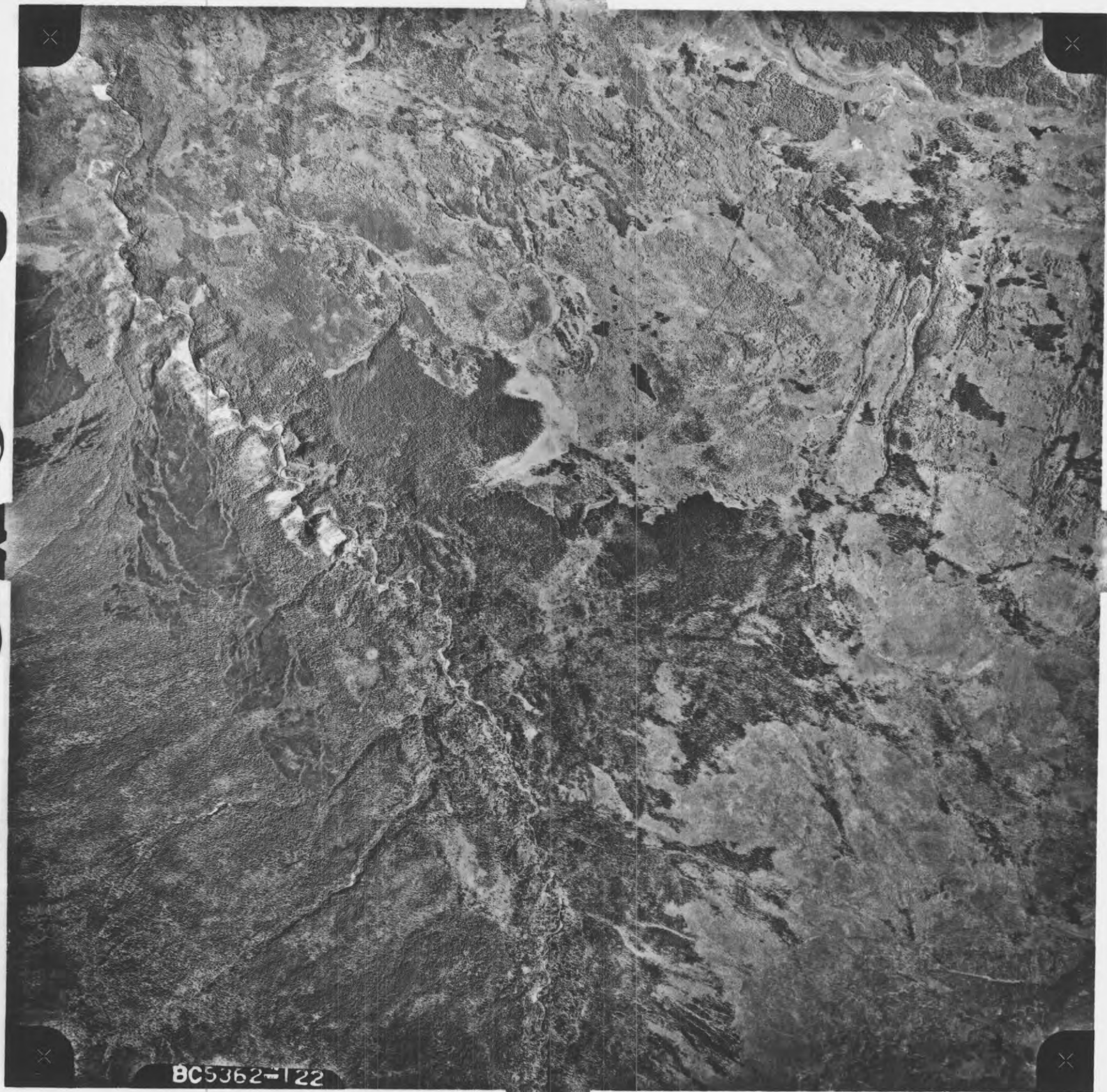
AD 153 34
1000000
1000000

N

BC5362-120



BC5362-121

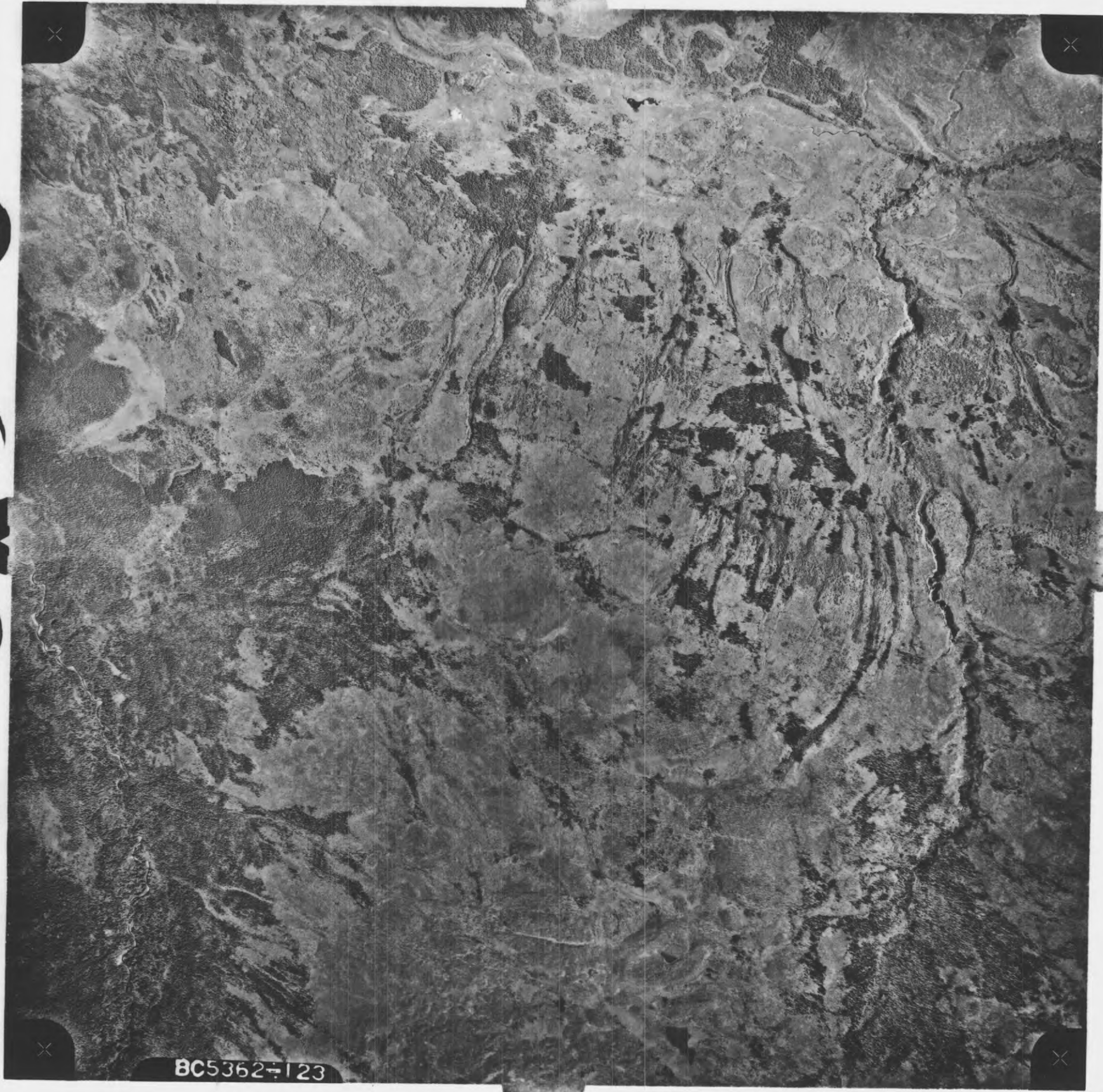


BC5362-122

15334
1111

2

BC5362-123



AP 15334
1111
of 1000

BC5362-124

N

BC5310-058

ALL RIGHT
RESERVED
14 AUG 68

N

BC5310-059

ALL RIGHTS
RESERVED
14 AUG 68

N

BC5310-060

ALL RIGHT
RESERVED
14 AUG 6

2

BC5310-061

ALL RIGHTS
RESERVED
14 AUG 68

Z

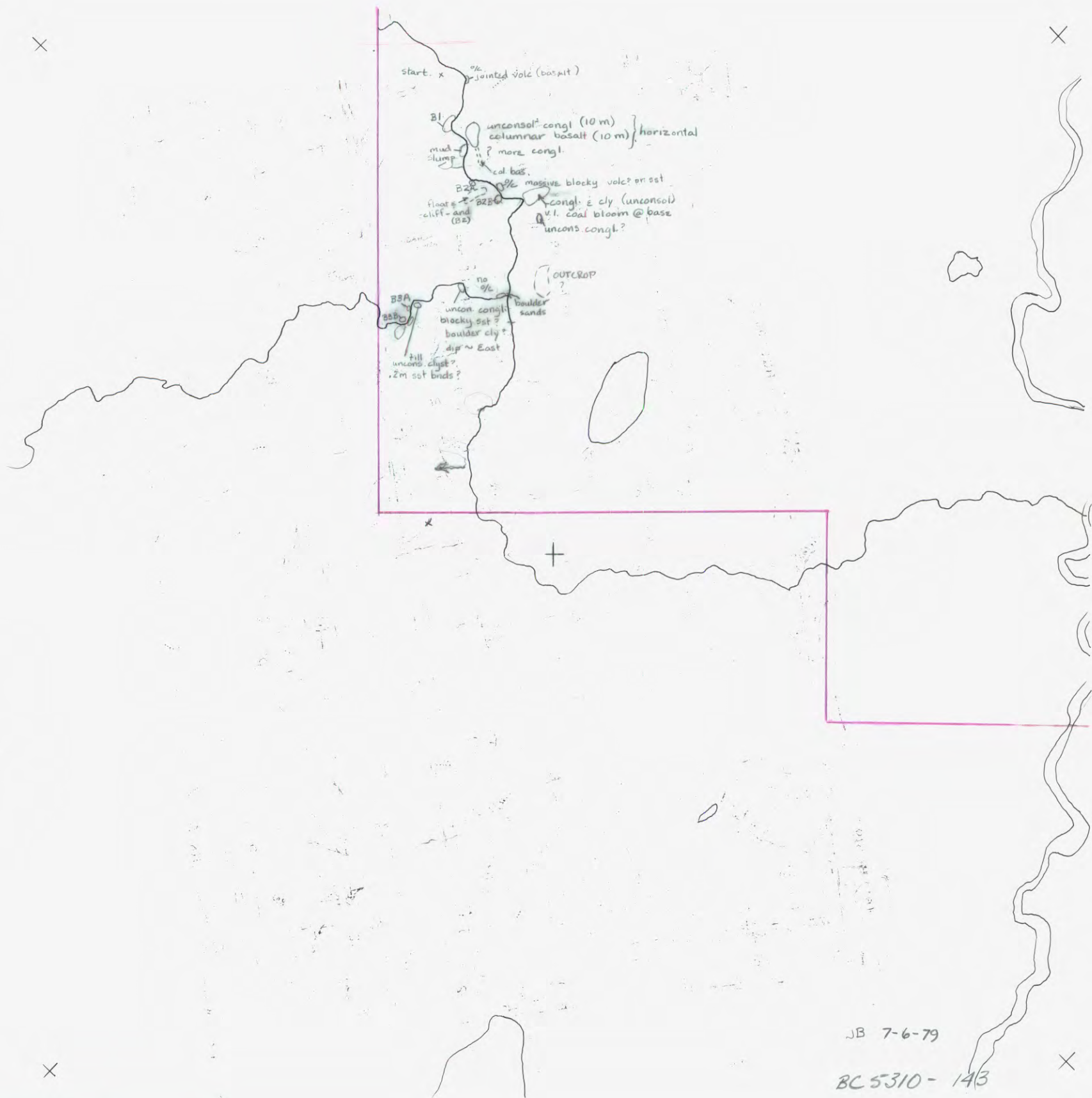
BC5310-062

ALL RIGHTS
RESERVED
14 AUG 67

2

BC5310-063

ALL RIGHTS
RESERVED
14 AUG 68



JB 7-6-79

BC 5310-143

