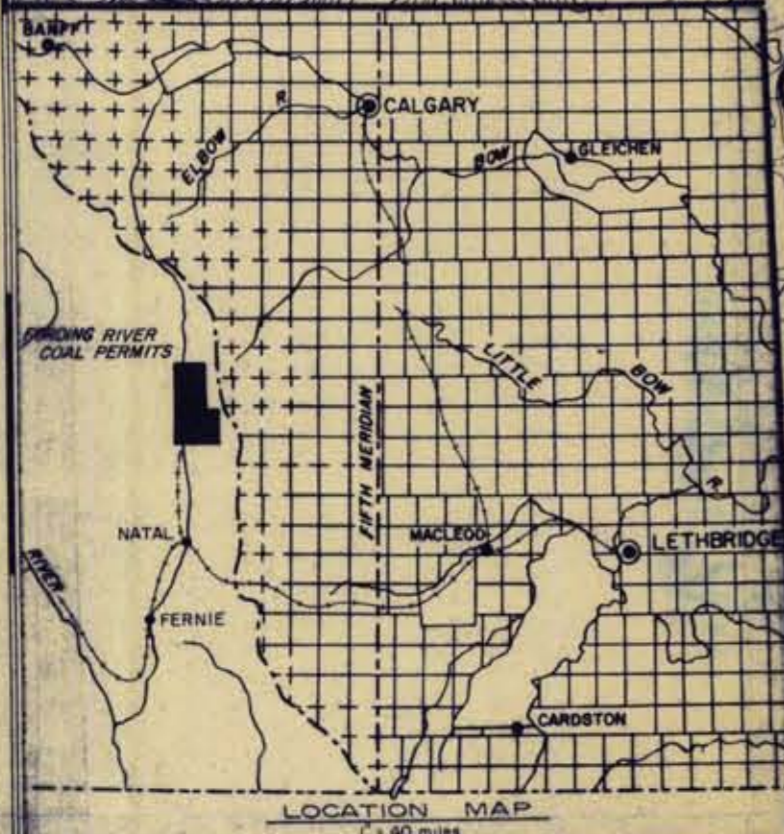


55°19'00" N

50°15'

10'

05'



Canadian Pacific
OIL AND GAS LIMITED
MINING DIVISION

FORDING RIVER PROJECT
PROPERTY MAP

DATE: NOVEMBER 2, 1952.
DRAWN BY: J.C.
APPROVED BY: G.H.R.
SCALE: 1:50,000
FILE NO.:

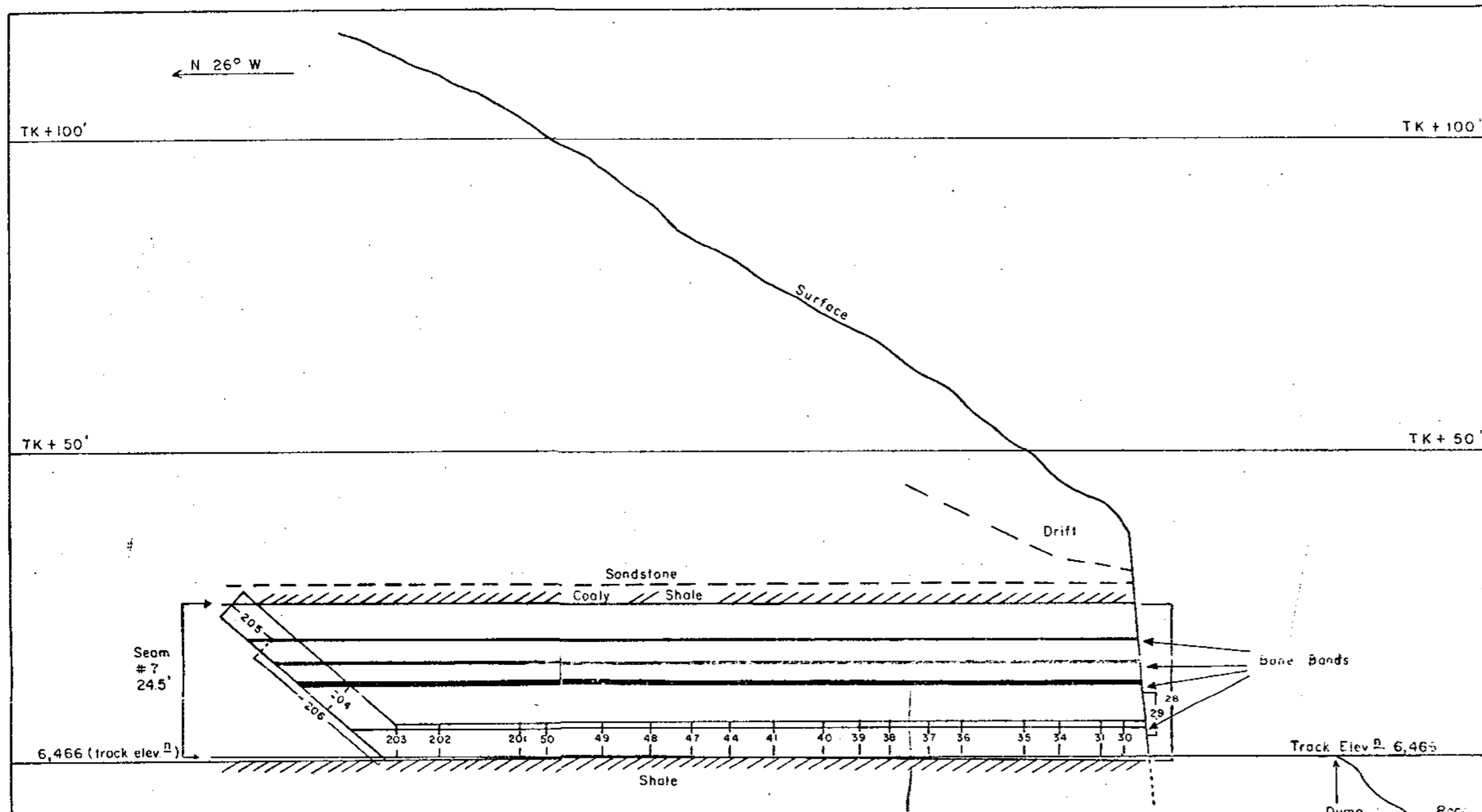
FORDING RIVER
BRITISH COLUMBIA - ALBERTA

307

FR 67(2)A

WEST OF FIFTH MERIDIAN - OUEST DU CINQUIÈME MÉRIDIEN

FORDING RIVER 67(2)A



SAMPLING RESULTS

SAMPLE	MOISTURE	ASH	VOL. MAT.	FIX. CARB.	F.S.I.	SULPHUR	B.T.U.
28	4.68	14.17	19.72	61.25	1 1/2	0.40	11,542
29	1.65	5.50	21.25	71.60	1 1/2	N.D.	14,257
30	3.65	13.28	22.64	60.43	1	N.D.	N.D.
31	4.34	10.36	23.10	62.20	1	N.D.	N.D.
34	4.37	11.56	20.65	63.42	2	N.D.	N.D.
35	3.74	12.78	22.30	61.18	2	N.D.	N.D.
36	4.03	12.32	22.08	61.55	1 1/2	N.D.	N.D.
37	2.32	10.62	23.10	63.76	1 1/2	N.D.	N.D.
38	1.84	8.45	23.19	66.52	7 1/2	N.D.	N.D.
39	2.72	10.70	23.62	62.96	7	N.D.	N.D.
40	2.07	10.92	22.54	64.47	7	N.D.	N.D.
41	1.71	11.58	24.30	62.41	6 1/2	N.D.	N.D.
44	1.48	9.21	23.84	65.47	7 1/2	N.D.	N.D.
47	1.55	13.73	23.29	61.43	7 1/2	N.D.	N.D.
48	2.31	9.19	22.66	65.64	7 1/2	N.D.	N.D.
49	1.78	8.80	22.15	67.27	2 1/2	N.D.	N.D.
50	1.64	7.49	22.80	-	5 1/2	N.D.	N.D.
201	1.11	10.22	21.60	-	4	N.D.	N.D.
202	1.12	11.73	22.26	-	6 1/2	N.D.	N.D.
203	1.98	11.59	22.15	-	5	N.D.	N.D.
204	0.96	16.93	22.79	-	7 1/2	N.D.	N.D.
205							
206							

Adit X-Section: 5.5' X 55' Nominal

Canadian Pacific
OIL AND GAS LIMITED
MINING DIVISION

FORDING RIVER PROJECT

ADIT #1
(#7 SEAM)

VERTICAL SECTION WEST WALL

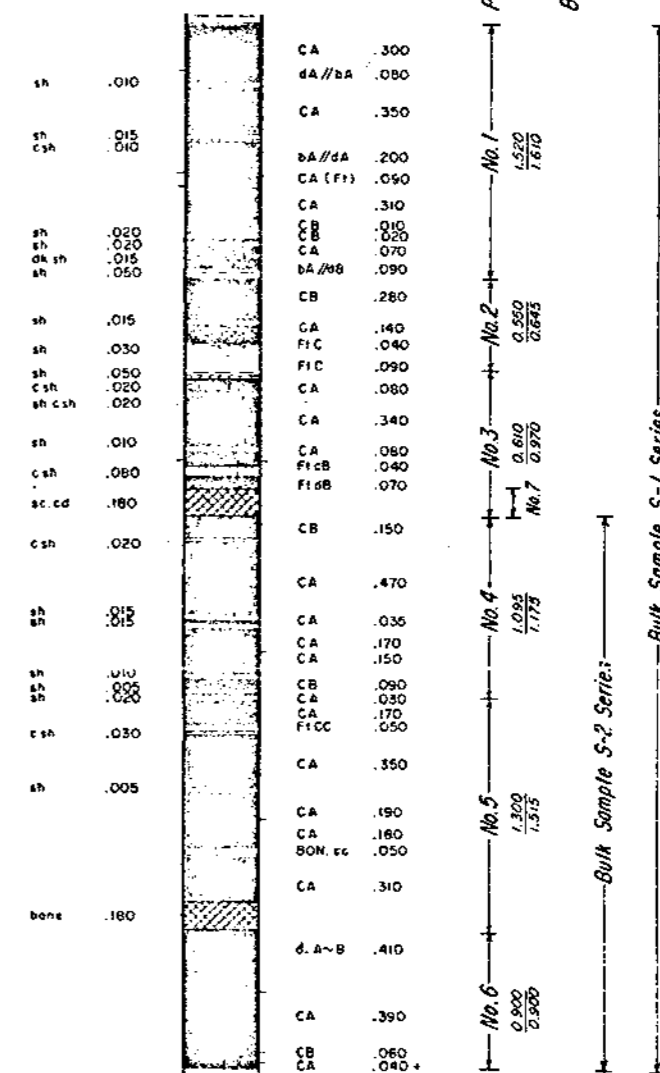
DATE: 10/67
CONT. INT.
AUTHOR: HGR
APPROVAL BY:
SCALE: 1"=20'
FILE NO.:

K-FORDING RIVER (17(2)A)

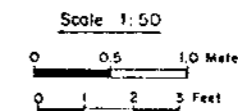
307

PLAN 'A'

ELK RIVER No.1 ADIT
A/5/A
#7 SEAM
DETAILED SECTION
(AT NORTH END OF ADIT)



ALL MEASUREMENTS IN METERS
Sampling and section by T. Shimoyama
MITSUI MINING



FR 67(2)A

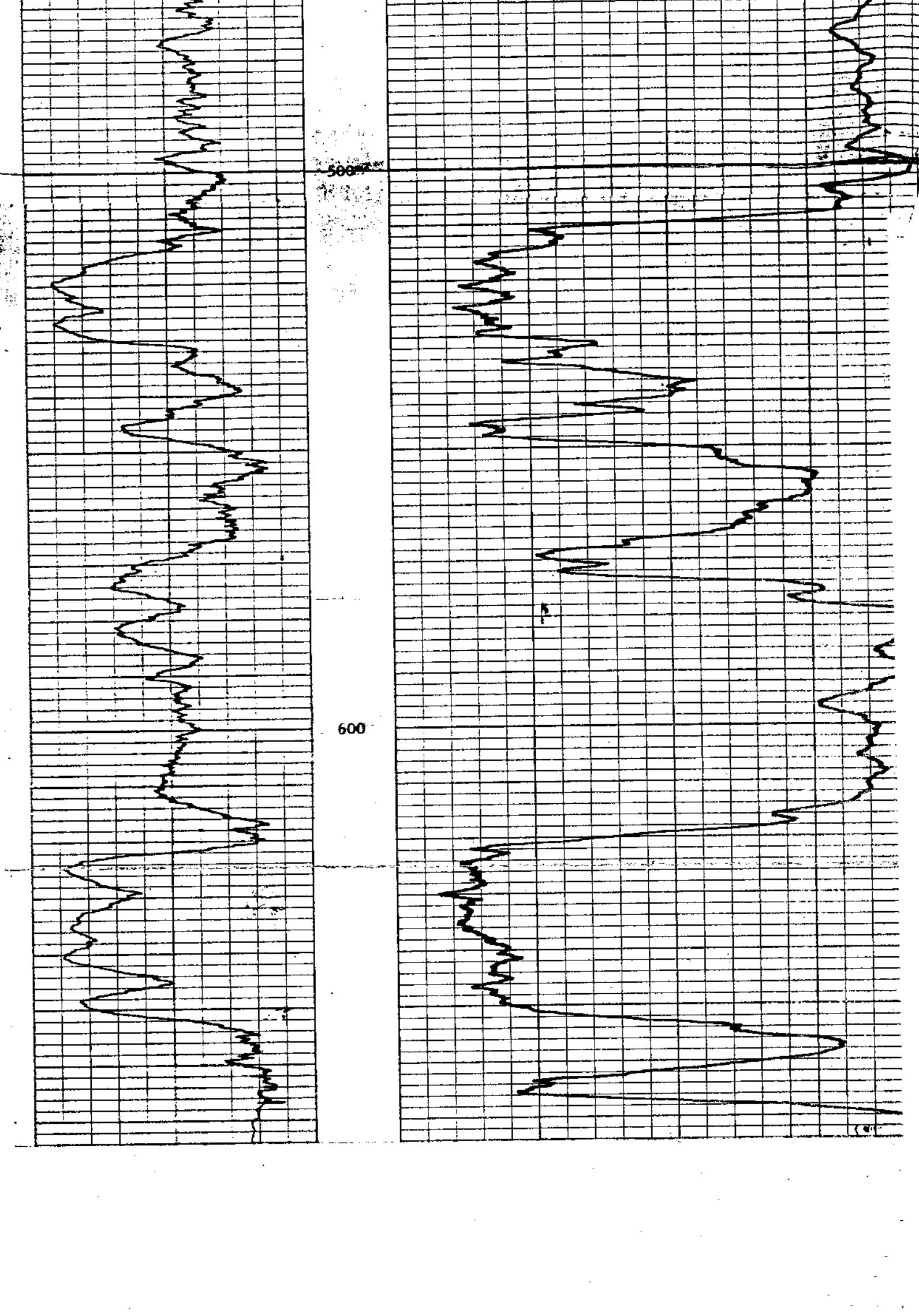
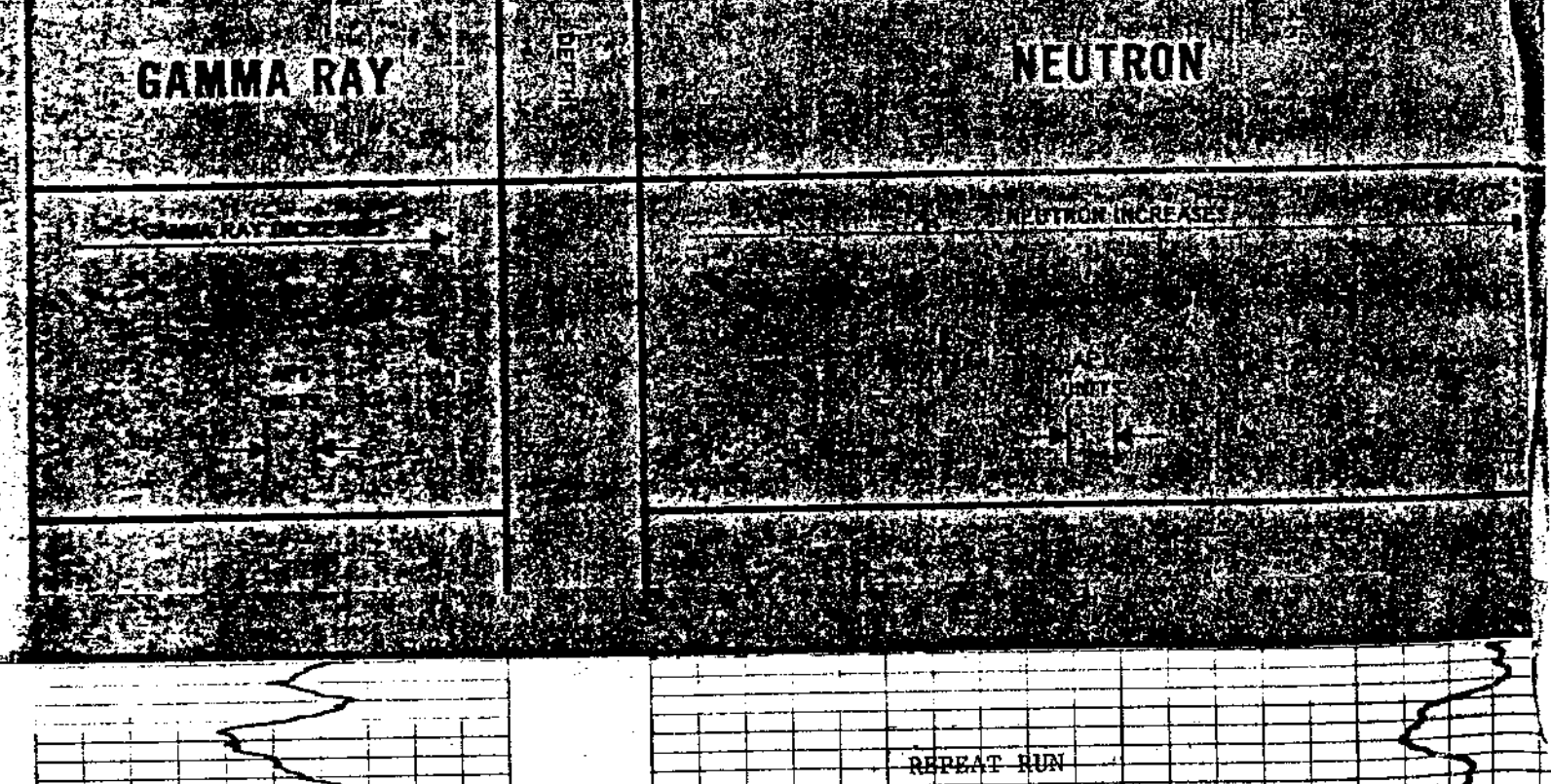
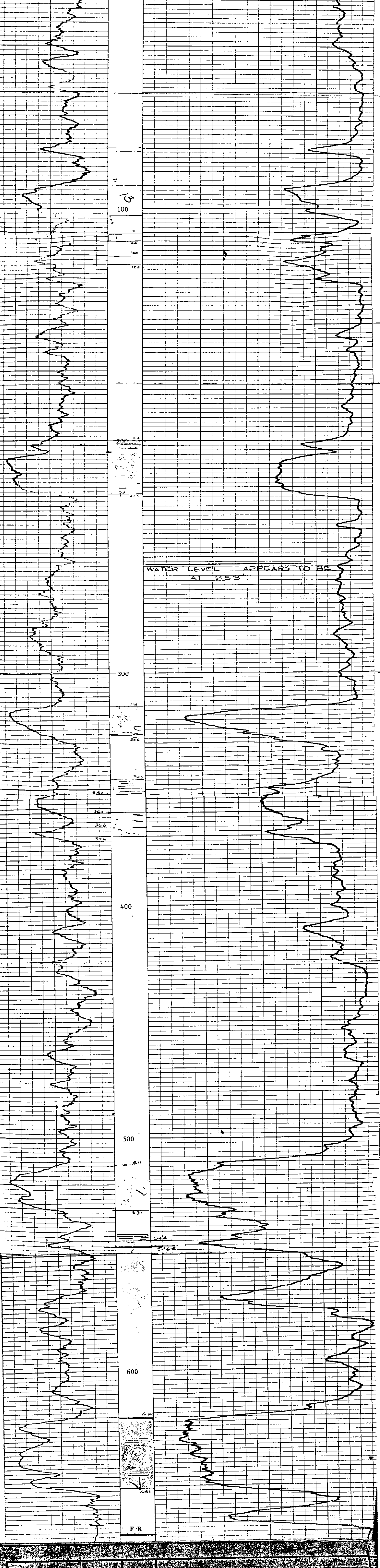
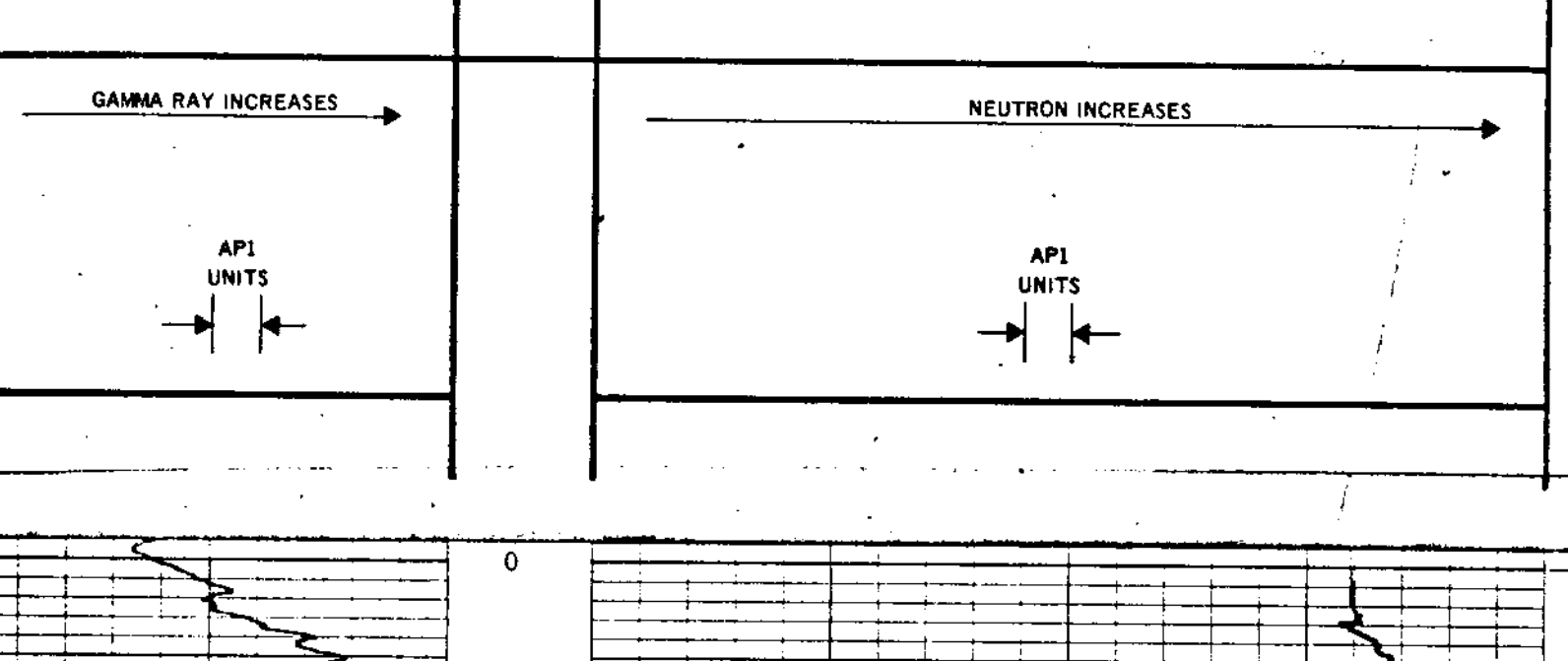
September 4, 1967

RECEIVED
AND DEPOSITED BY
RECORDS SECTION

ROKITE K. HOLDING RIVER (1934) OIL ENTERPRISES LTD. CALGARY, ALBERTA		COMPANY: CANADIAN PACIFIC OIL & GAS LIMITED WELL: ELK RIVER HOLE NO 1 LOCATION: EAGLE MOUNTAIN FIELD: ELK RIVER PROJECT PROVINCE: BRITISH COLUMBIA	Date: 11 SEPT 67 Log Reading: 671 Log Reading: 0 Log Reading: 671 Log Reading: 672 AIR & WATER: 250	Date: 11 SEPT 67 Log Reading: 671 Log Reading: 0 Log Reading: 671 Log Reading: 672 AIR & WATER: 250	PERFORATING RECORD GUN TYPE: 7150 SHOT DENSITY: 7410 TOTAL SHOTS: 7410 PERFORATING INTERVAL: 7410
COLLAR LOCATION: 5 1/4 4 RBS 10 TUBULAR RECORD: SIZE WEIGHT GRADE FROM TO		PERFORATING RECORD: GUN TYPE, SHOT DENSITY, TOTAL SHOTS, PERFORATING INTERVAL			

EQUIPMENT DATA RUN NO.: ONE LOG TYPE: NEUTRON/NEUTRON TOOL MODEL NO.: 1 11/16 DIAMETER: 6 INCH DETECTOR MODEL NO.: MRC-N-SS-W TYPE: 599 LENGTH: 15 INCH SOURCE MODEL NO.: AmBe SPACING: 6.94 x 10 ⁶ N/SEC TYPE: 10 STRENGTH: CGN27U4A74		LOGGING DATA DEPTHS: 0 TO 663 SPEED: 10 FT MIN T.C. SEC: 3 SENS. SETTINGS: 25 ZERO DIV. L OR R: 3 API O.R. UNITS PER LOG DIV: 20	
---	--	--	--

MARKS WATER LEVEL APPEARS TO BE 253 FT
 TOP OF CASING WAS LEVEL WITH GROUND



ROKE

GAMMA RAY NEUTRON LOG

OIL ENTERPRISES LTD. CALGARY ALBERTA

CANADIAN PACIFIC OIL & GAS LIMITED

WELL: ELK RIVER HOLE NO 2

LOCATION: EDGE MOUNTAIN

FIELD: ELK RIVER PROJECT

PROVINCE: BRITISH COLUMBIA

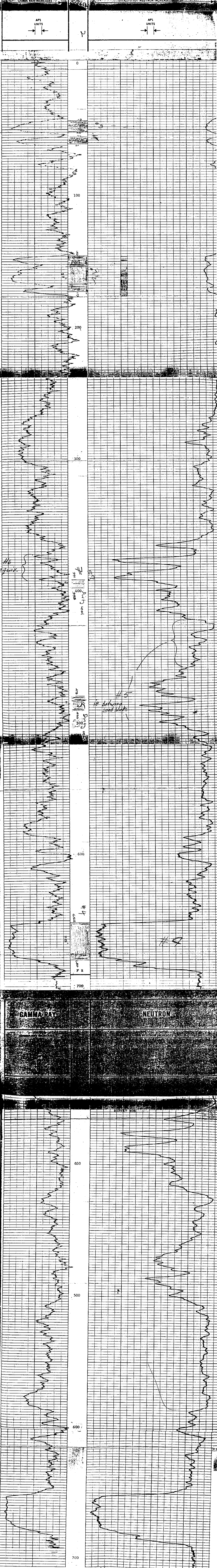
307

FILE NO. _____
 COMPANY: _____
 WELL: ELK RIVER HOLE NO 2
 LOCATION: EDGE MOUNTAIN
 FIELD: ELK RIVER PROJECT
 PROVINCE: BRITISH COLUMBIA
 ELEV. 6585
 NEUTRON DENSITY: 1.625
 PERFORMING RECORD: _____
 LOG TYPE: _____
 DIAMETER: 1 11/16
 DETECTOR MODEL NO.: _____
 TYPE: _____
 LENGTH: _____
 SOURCE MODEL NO.: _____
 SERIAL NO.: _____
 SPACING: _____
 TYPE: _____
 STRENGTH: _____

RUN NO. 11 800F 67
 LOG TYPE: _____
 DIAMETER: 1 11/16
 DETECTOR MODEL NO.: _____
 TYPE: _____
 LENGTH: 18"
 SOURCE MODEL NO.: _____
 SERIAL NO.: _____
 SPACING: _____
 TYPE: _____
 STRENGTH: _____

GAMMA RAY				NEUTRON			
DEPTH	API UNITS	SENS. SEC.	T.C. SEC.	DEPTH	API UNITS	SENS. SEC.	T.C. SEC.
0	30	3	10	0	15	3	15

REMARKS: - TOP OF CASING WAS LEVEL WITH GROUND



GAMMA RAY				NEUTRON			
DEPTH	API UNITS	SENS. SEC.	T.C. SEC.	DEPTH	API UNITS	SENS. SEC.	T.C. SEC.
400	30	3	10	400	15	3	15

ROKE

GAMMA RAY NEUTRON LOG

OIL ENTERPRISES LTD. CALGARY ALBERTA

FILE NO. _____ COMPANY CANADIAN PACIFIC OIL & GAS LIMITED

WELL ELK RIVER HOLE NO 3

LOCATION EAGLE MOUNTAIN

FIELD ELK RIVER PROJECT

PROVINCE BRITISH COLUMBIA

PERMANENT IDENTIFICATION NO. _____

LOG MEASURED FROM _____

WELL DEPTH MEASURED FROM _____

DATE 12 SEPT 67

LOGGING COMPANY **LEASING SERVICES LTD.**

LOGGING NO. 6075

LOGGING ENGINEER **G. R. ROBERTSON**

LOGGING SUPERVISOR **G. R. ROBERTSON**

LOGGING ASSISTANT **G. R. ROBERTSON**

LOGGING OPERATOR **G. R. ROBERTSON**

LOGGING TECHNICIAN **G. R. ROBERTSON**

LOGGING DRIVER **G. R. ROBERTSON**

LOGGING OPERATOR **G. R. ROBERTSON**

LOGGING TECHNICIAN **G. R. ROBERTSON**

LOGGING DRIVER **G. R. ROBERTSON**

LOGGING OPERATOR **G. R. ROBERTSON**

LOGGING TECHNICIAN **G. R. ROBERTSON**

LOGGING DRIVER **G. R. ROBERTSON**

LOGGING OPERATOR **G. R. ROBERTSON**

LOGGING TECHNICIAN **G. R. ROBERTSON**

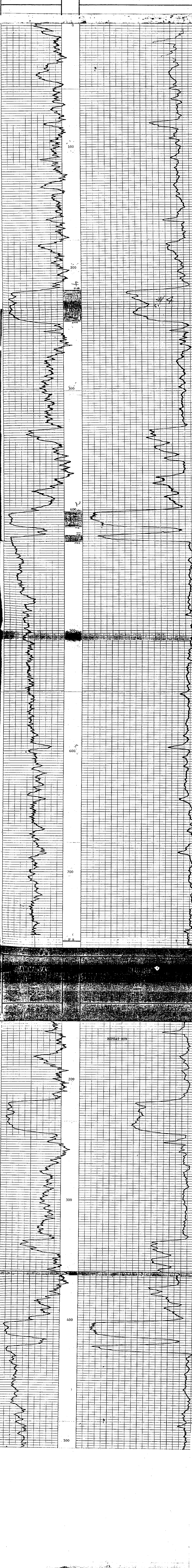
LOGGING DRIVER **G. R. ROBERTSON**

GAMMA RAY		NEUTRON	
RUN NO.	ONE	RUN NO.	ONE
TOOL MODEL NO.	1 11/16	TOOL MODEL NO.	NEUTRON/NEUTRON
DIAMETER	1 11/16	DIAMETER	1 11/16
DETECTOR MODEL NO.	GLEGER	DETECTOR MODEL NO.	PROPORTIONAL
TYPE	18"	TYPE	6 INCH
LENGTH	8.55 FT	LENGTH	MRC-N-55-W
DISTANCE TO SOURCE		SOURCE MODEL NO.	598
		SERIAL NO.	15 INCH
		SPACING	AmBe
		TYPE	6.94 x 10 ⁶ N/SEC
		STRENGTH	

LOGGING DATA			
GENERAL	SPEED	T.C.	SENS.
DEPTHS	FT MIN	SEC	SETTINGS
NO FROM	TO		
1	0	749	15
			3
			30

GAMMA RAY				NEUTRON			
API G.R. UNITS	ZERO	PER LOG DIV.		API N. UNITS	ZERO	PER LOG DIV.	

GAMMA RAY				NEUTRON			
API UNITS				API UNITS			



REPEAT RUN