

K-KAISER FREEHOLDS (GENERAL) 75(2) B

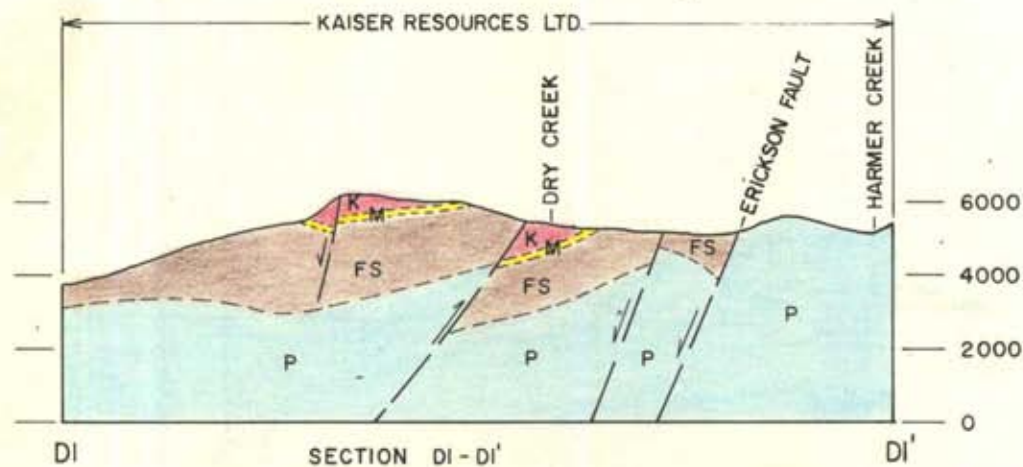
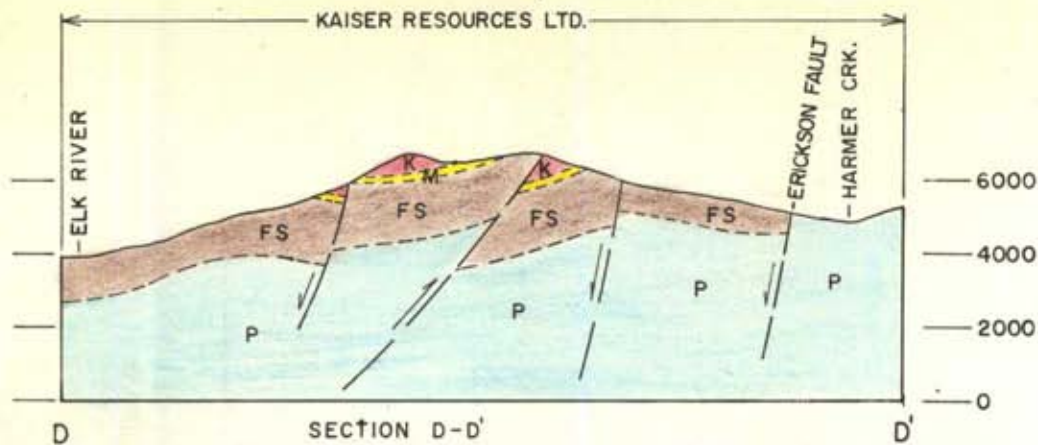
MAPS + CROSS SECTIONS

KAISER RESOURCES LTD.

JAN. 1974

GEOLOGICAL BRANCH
ASSESSMENT REPORT

00 340



LEGEND

MESOZOIC

CRETACEOUS

A ALBERTA GROUP

B BLAIRMORE GROUP

KOOTENAY FORMATION

E ELK MEMBER

K COAL-BEARING MEMBER

M MOOSE MOUNTAIN MEMBER

JURASSIC

F FERNIE FORMATION

FS (UNDIFF.)

TRIASSIC

SR SPRAY RIVER FORMATION

PALEOZOICS

P PALEOZOICS (UNDIFF.)

KAISER RESOURCES
SPARWOOD, B. C.

FERNIE COAL BASIN
HARMER RIDGE

STRUCTURAL CROSS-SECTIONS

DRAWN **J.B.S.**

CHECKED

APPROVED

DATE **APRIL, 1973.**

SCALE:

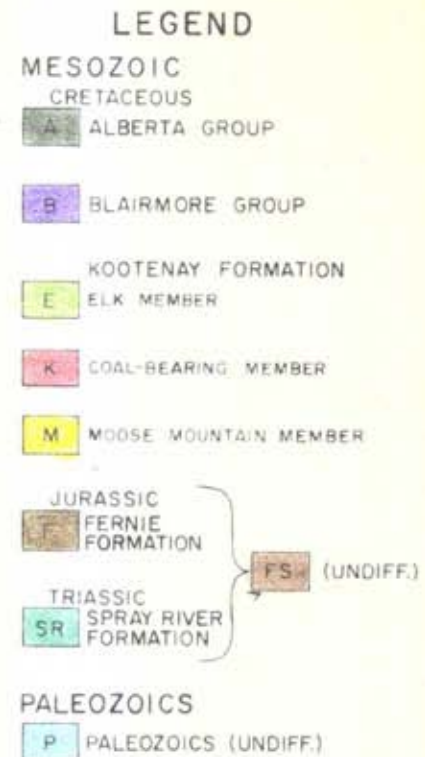
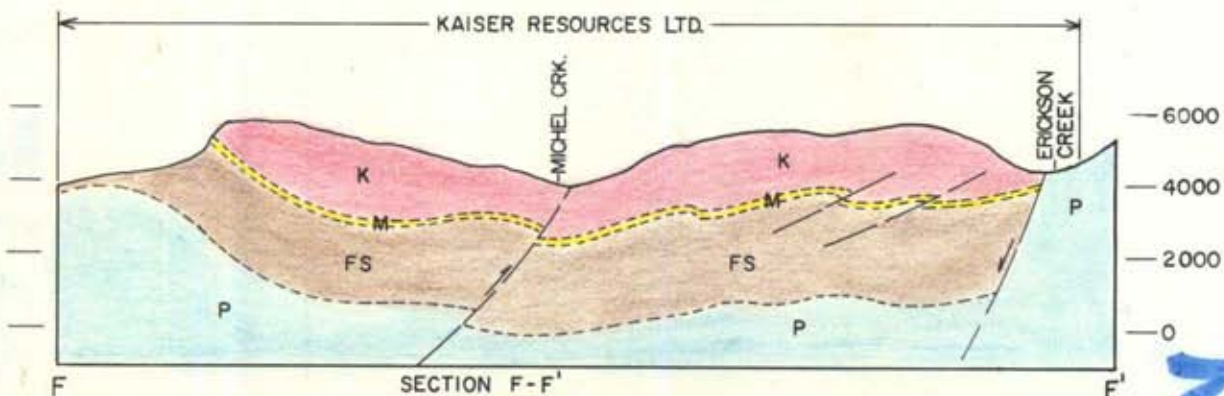
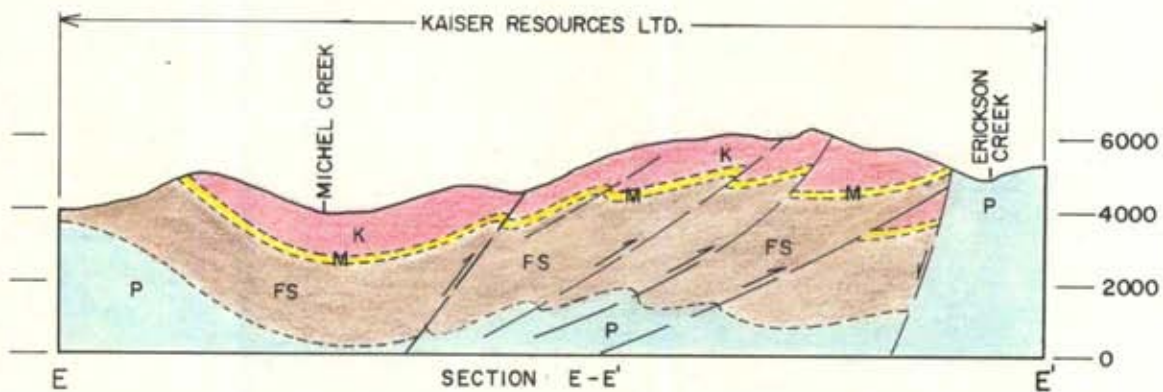
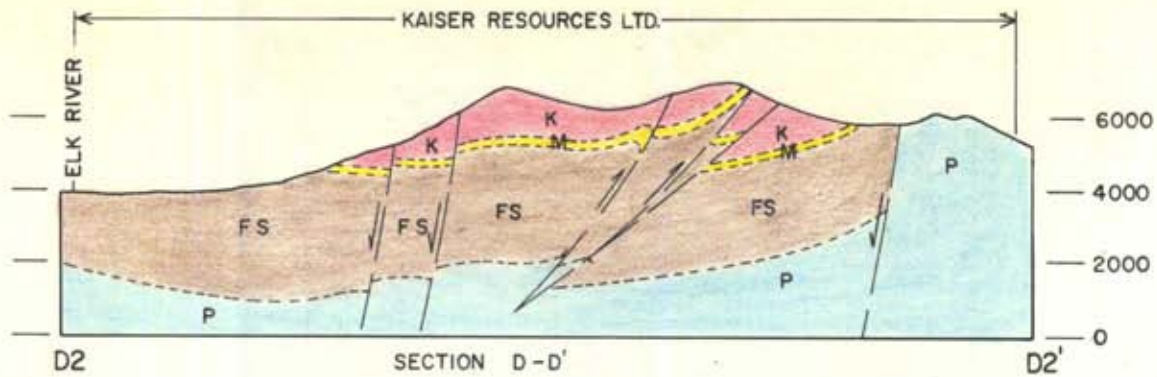
Horz. $1'' = 1 \text{ MILE}$

Vert. $1'' = 1 \text{ MILE}$

Drwg. No.

191-15-3

340



KAISER RESOURCES
SPARWOOD, B. C.

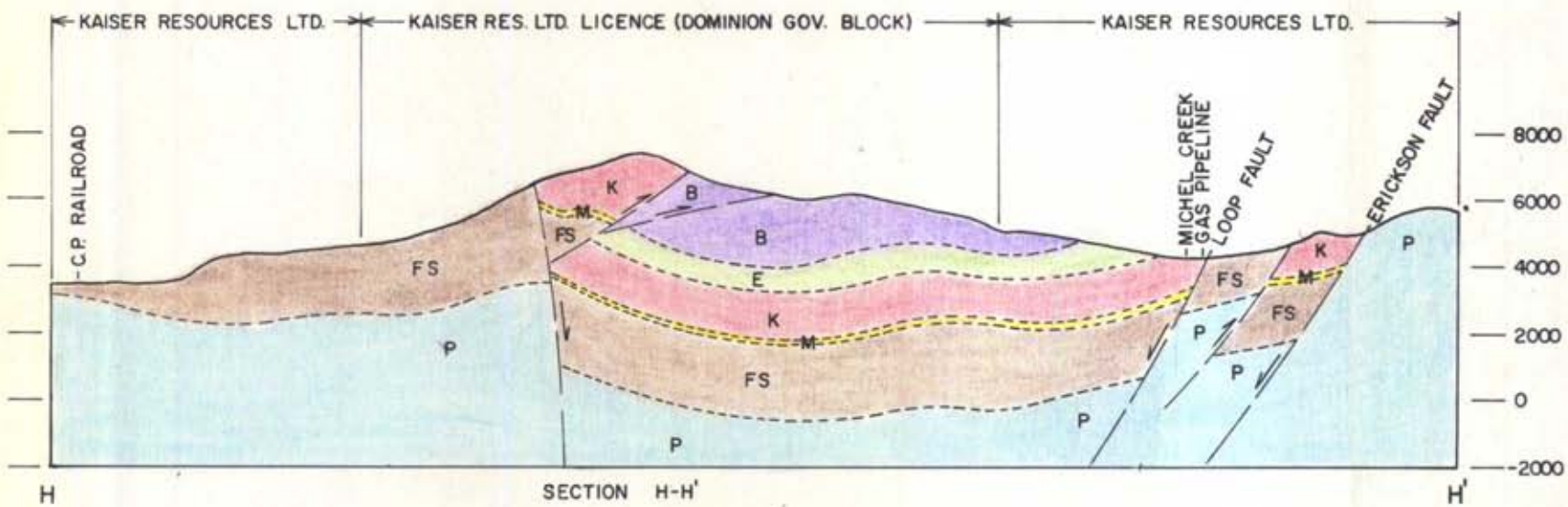
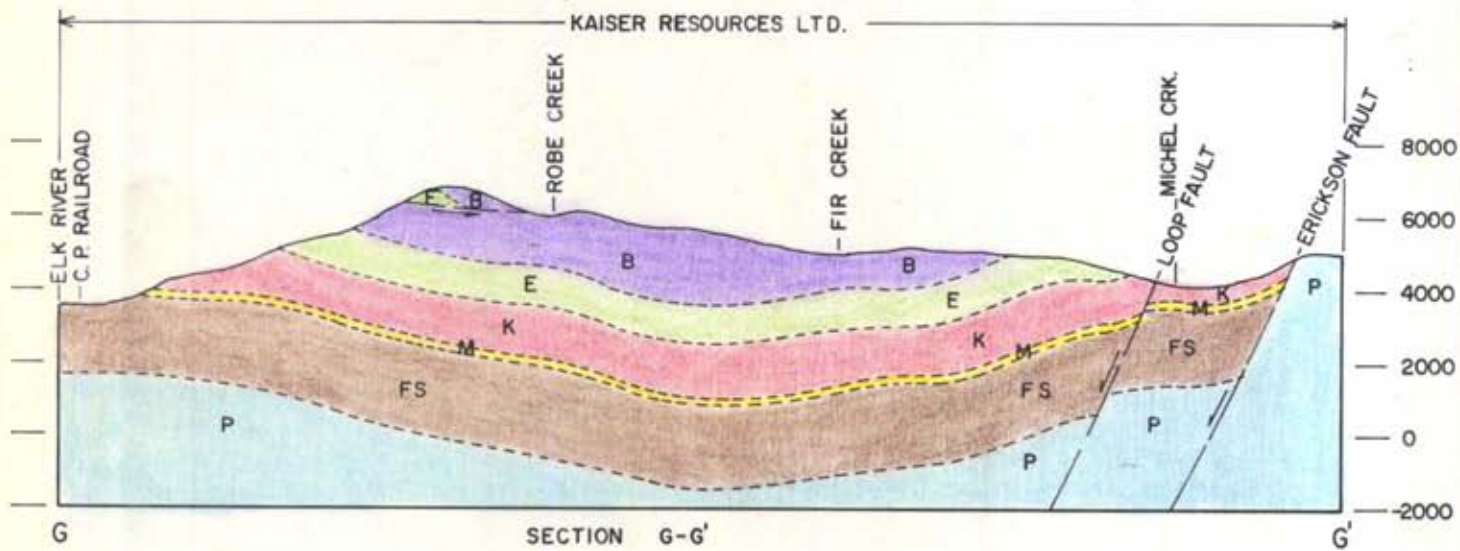
FERNIE COAL BASIN
SPARWOOD &
HARMER RIDGES

STRUCTURAL CROSS-SECTIONS

DRAWN L. B. S.
CHECKED
APPROVED
DATE APRIL, 1973

SCALE
Horz 1" = 1 MILE
Vert 1" = 1 MILE
Draw No 191-15-4

340



- ### LEGEND
- MESOZOIC**
- CRETACEOUS**
- ALBERTA GROUP
 - BLAIRMORE GROUP
 - KOOTENAY FORMATION
 - ELK MEMBER
 - COAL-BEARING MEMBER
 - MOOSE MOUNTAIN MEMBER
- JURASSIC**
- FERNIE FORMATION
- TRIASSIC**
- SPRAY RIVER FORMATION
- PALEOZOICS**
- PALEOZOICS (UNDIFF.)
- FS (UNDIFF.)

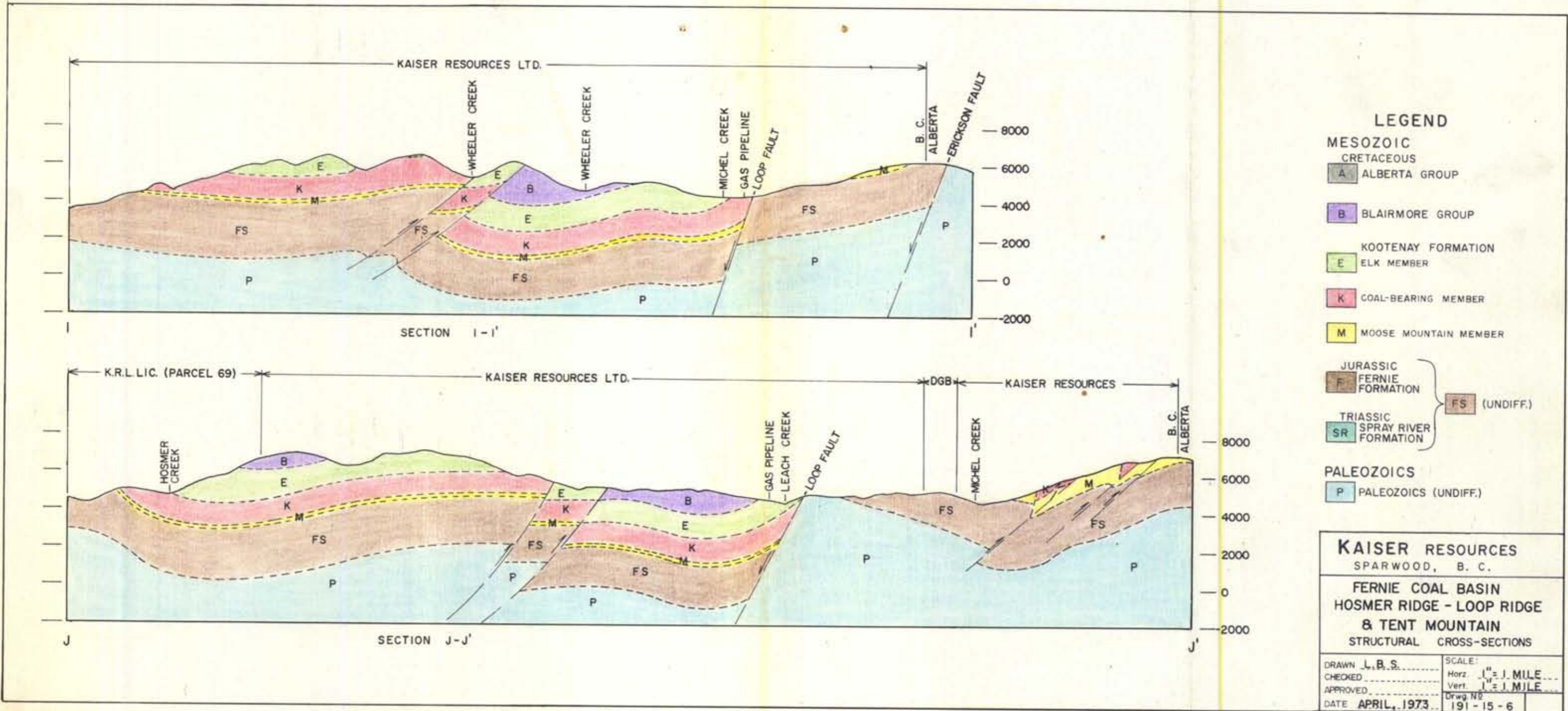
KAISER RESOURCES
SPARWOOD, B. C.

FERNIE COAL BASIN
SPARWOOD RIDGE
& LOOP RIDGE

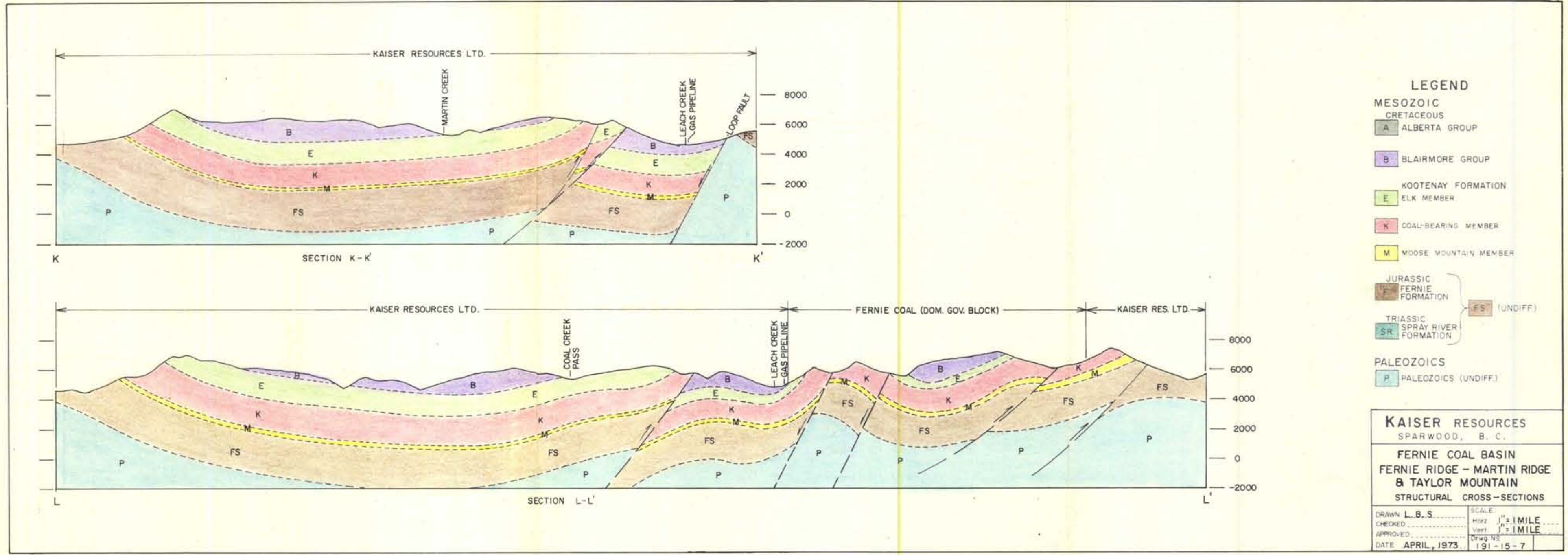
STRUCTURAL CROSS-SECTIONS

DRAWN L.B.S.	SCALE:
CHECKED	Horz 1" = 1 MILE
APPROVED	Vert 1" = 1 MILE
DATE APRIL, 1973	Drwg. No. 191-15-5

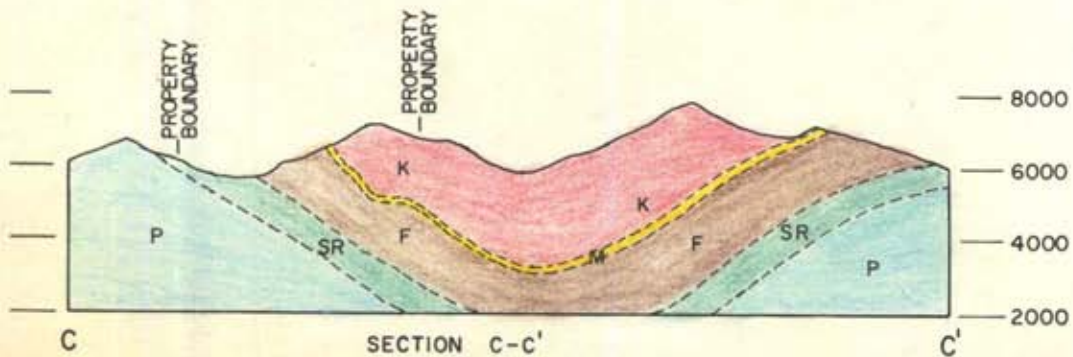
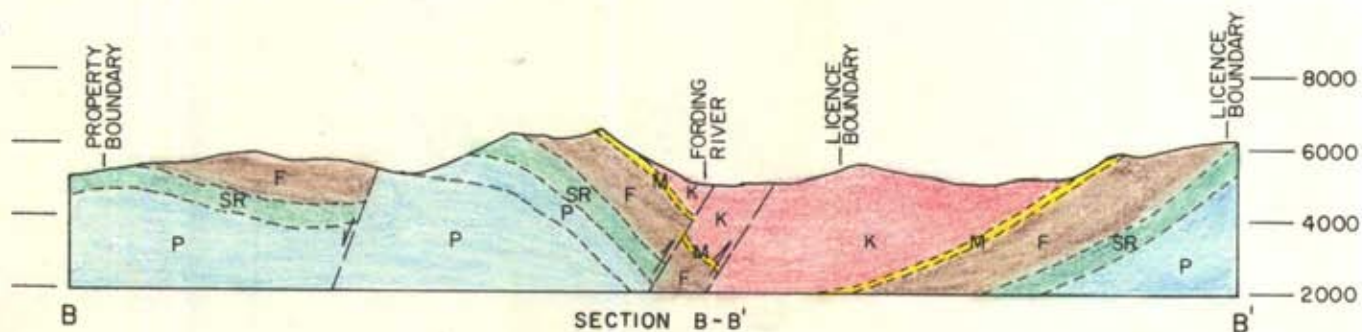
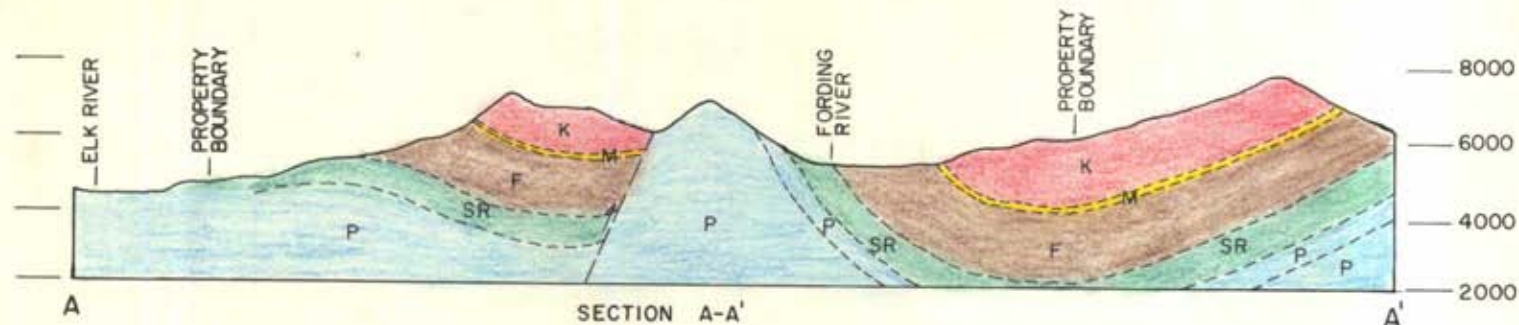
340



340



340



- CRETACEOUS KOOTENAY FORMATION
 - E ELK MEMBER
 - K COAL-BEARING MEMBER
 - M MOOSE MOUNTAIN MEMBER
- F JURASSIC FERNIE FORMATION
- SR TRIASSIC SPRAY RIVER FORMATION
- P PALEOZOICS (UNDIFF.)

KAISER RESOURCES

SPARWOOD, B. C.

UPPER ELK VALLEY
COAL FIELD

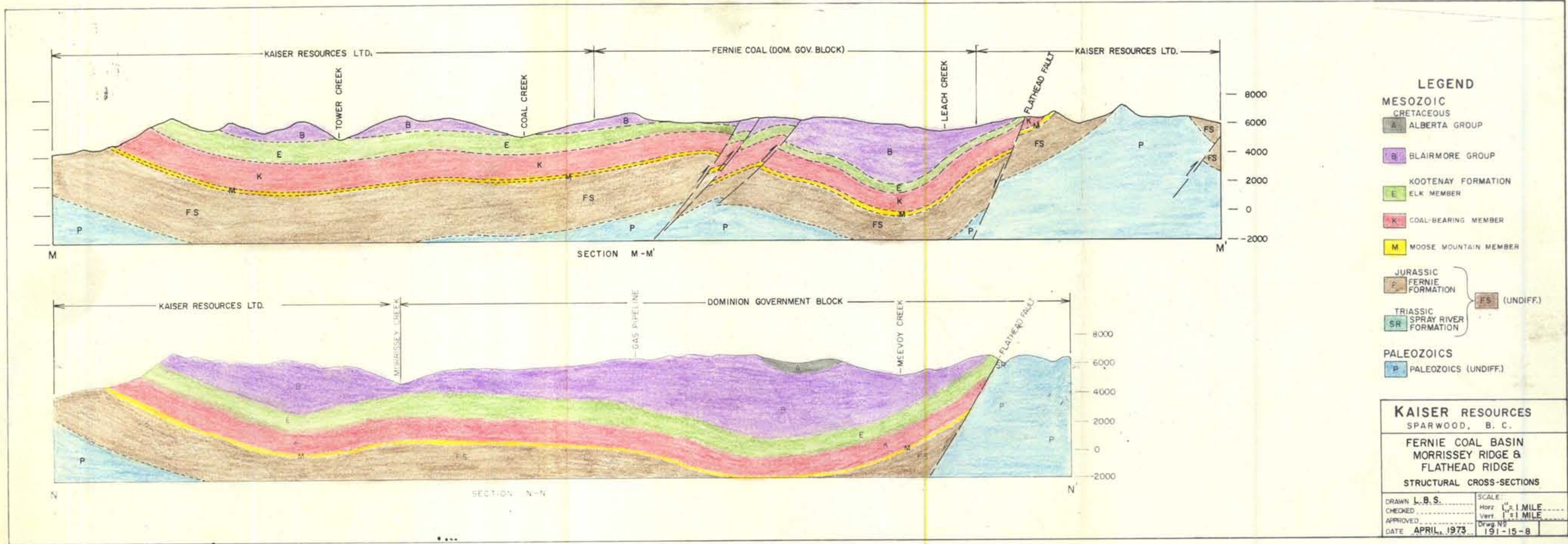
STRUCTURAL CROSS-SECTIONS

DRAWN L.B.S.
CHECKED

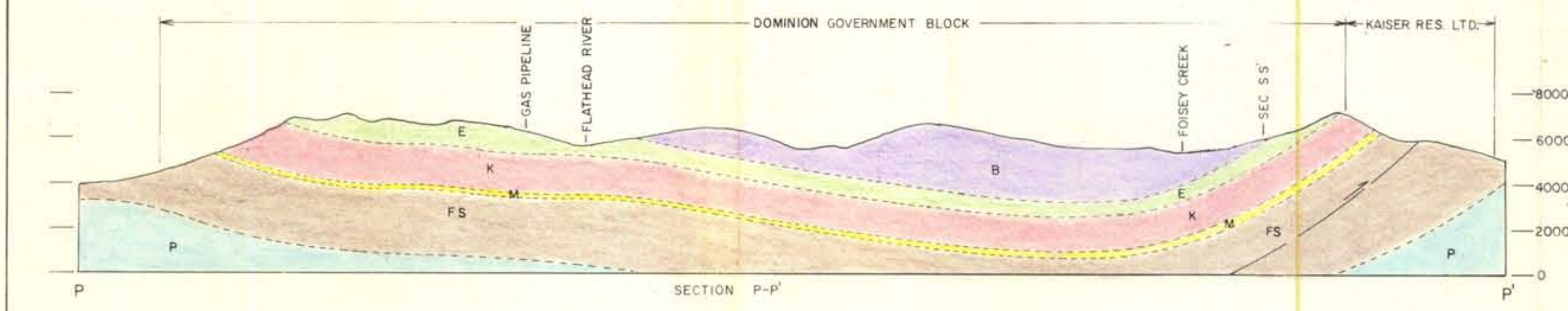
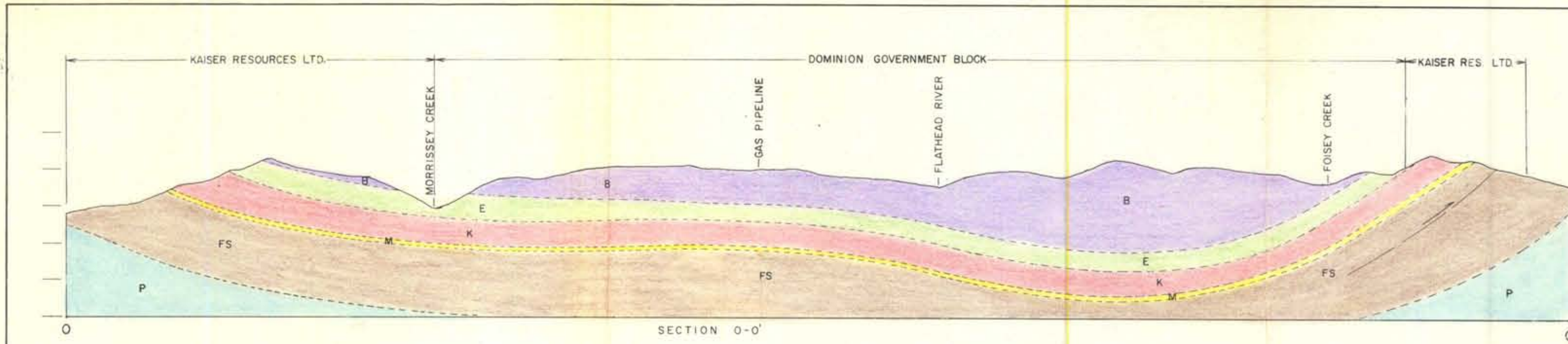
SCALE:
HORZ. 1" = 1 MILE
VERT. 1" = 1 MILE

DATE APRIL, 1972.

340



340



- LEGEND**
- 8000
 - 6000
 - 4000
 - 2000
 - 0
 - -2000
- MESOZOIC**
- CRETACEOUS**
- A ALBERTA GROUP
 - B BLAIRMORE GROUP
 - E KOOTENAY FORMATION
ELK MEMBER
 - K COAL-BEARING MEMBER
 - M MOOSE MOUNTAIN MEMBER
- JURASSIC**
- F FERNIE FORMATION
- TRIASSIC**
- SR SPRAY RIVER FORMATION
- PALEOZOICS**
- P PALEOZOICS (UNDIFF.)
 - FS (UNDIFF.)

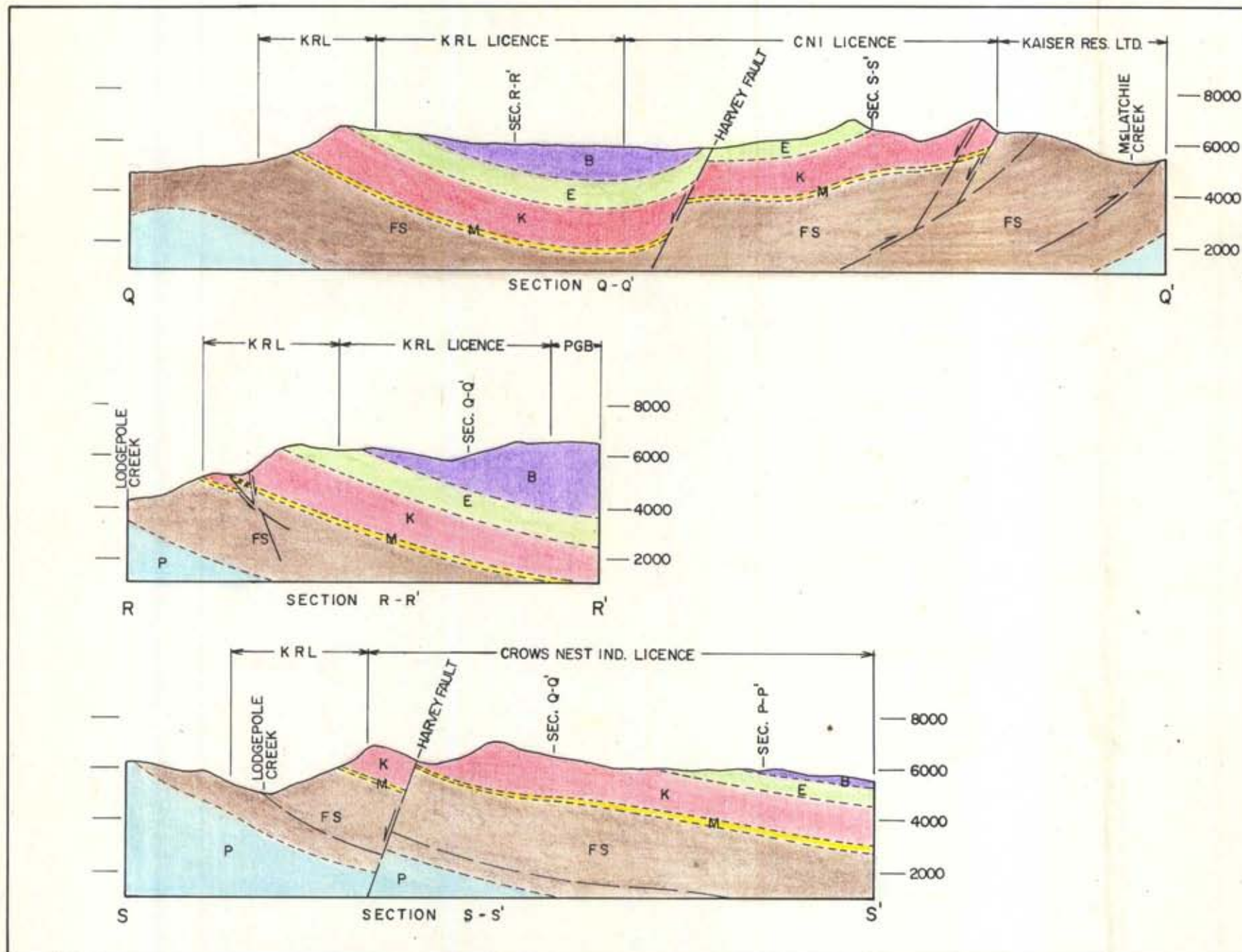
KAISER RESOURCES
SPARWOOD, B. C.

FERNIE COAL BASIN
FLATHEAD RIDGE

STRUCTURAL CROSS-SECTIONS

DRAWN L.B.S.
CHECKED
APPROVED
DATE APRIL, 1973

SCALE
Horz 1" = 1 MILE
Vert 1" = 1 MILE
Drawn No. 191-15-9



- ### LEGEND
- MESOZOIC**
CRETACEOUS
 A ALBERTA GROUP
 B BLAIRMORE GROUP
 E KOOTENAY FORMATION
 ELK MEMBER
 K COAL-BEARING MEMBER
 M MOOSE MOUNTAIN MEMBER
- JURASSIC**
 F FERNE FORMATION
 FS (UNDIFF.)
- TRIASSIC**
 SR SPRAY RIVER FORMATION
- PALEOZOICS**
 P PALEOZOICS (UNDIFF.)

KAISER RESOURCES
 SPARWOOD, B. C.

FERNIE COAL BASIN
FLATHEAD RIDGE

STRUCTURAL CROSS-SECTIONS

DRAWN - J. B. S.	SCALE:
CHECKED	Horz. 1" = 1 MILE
APPROVED	Vert. 1" = 1 MILE
DATE APRIL, 1973	Drwg. No. 191-15-10

340