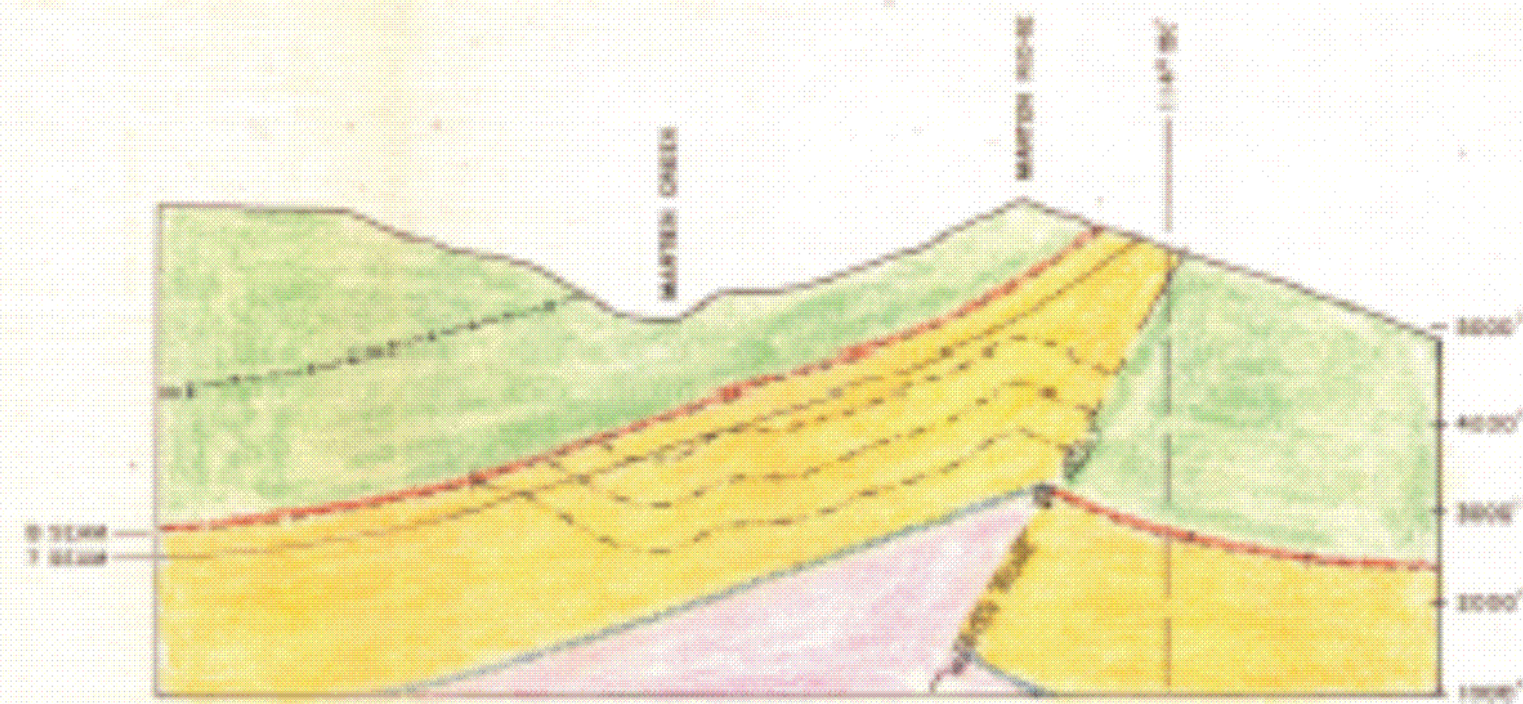
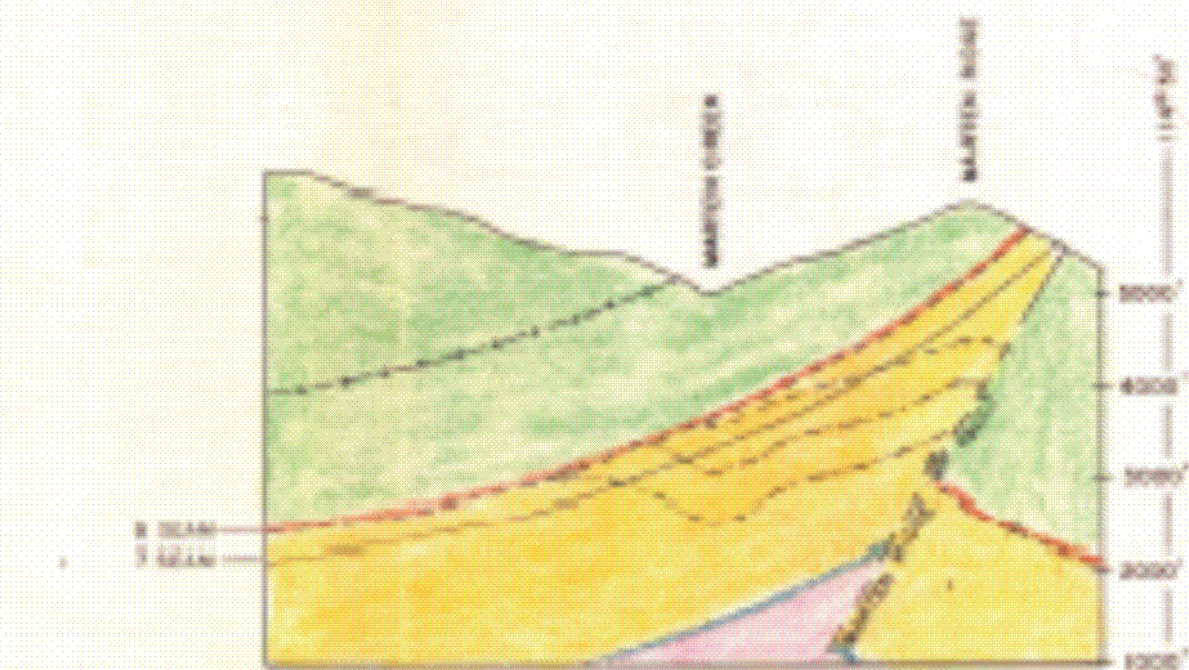


ASSESSMENT REPORT
K-Marten Creek 71(2)A
00 Maps & Cross Sections.
00 Water Resources ~~etc.~~ 343

343
Part 2/2



SECTION G



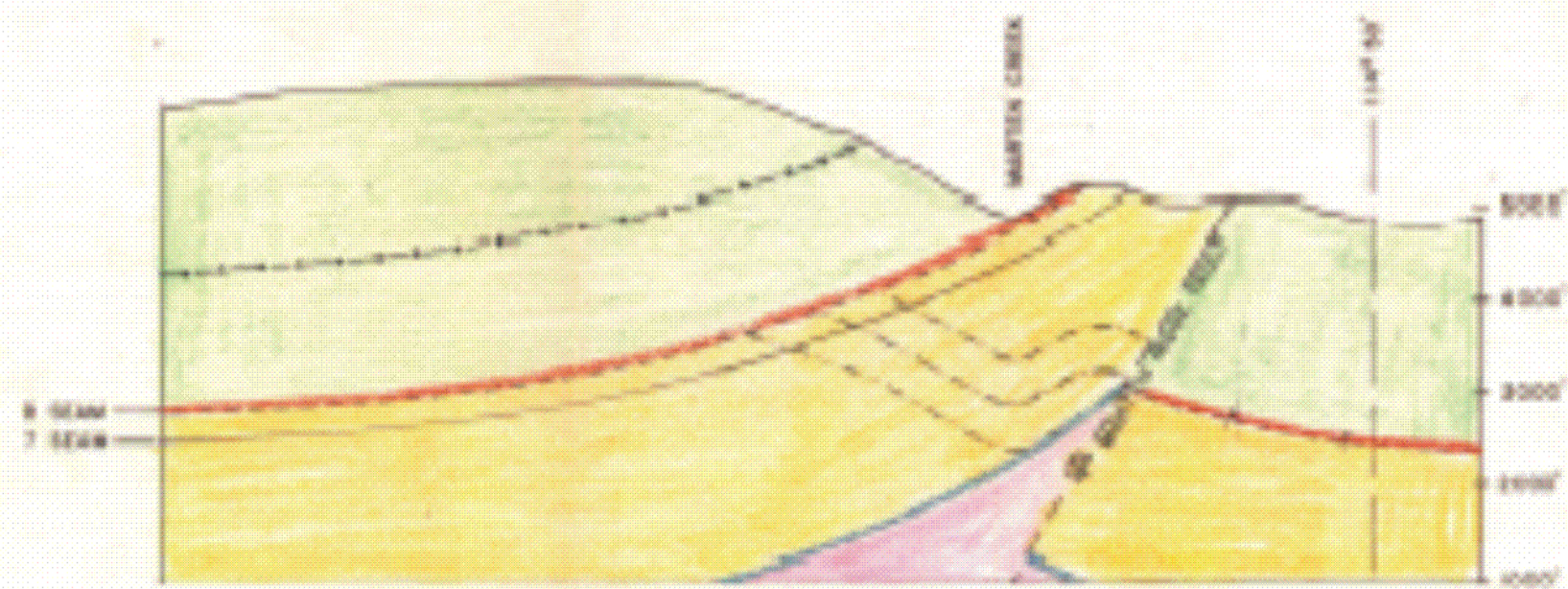
SECTION F

EXPLANATION

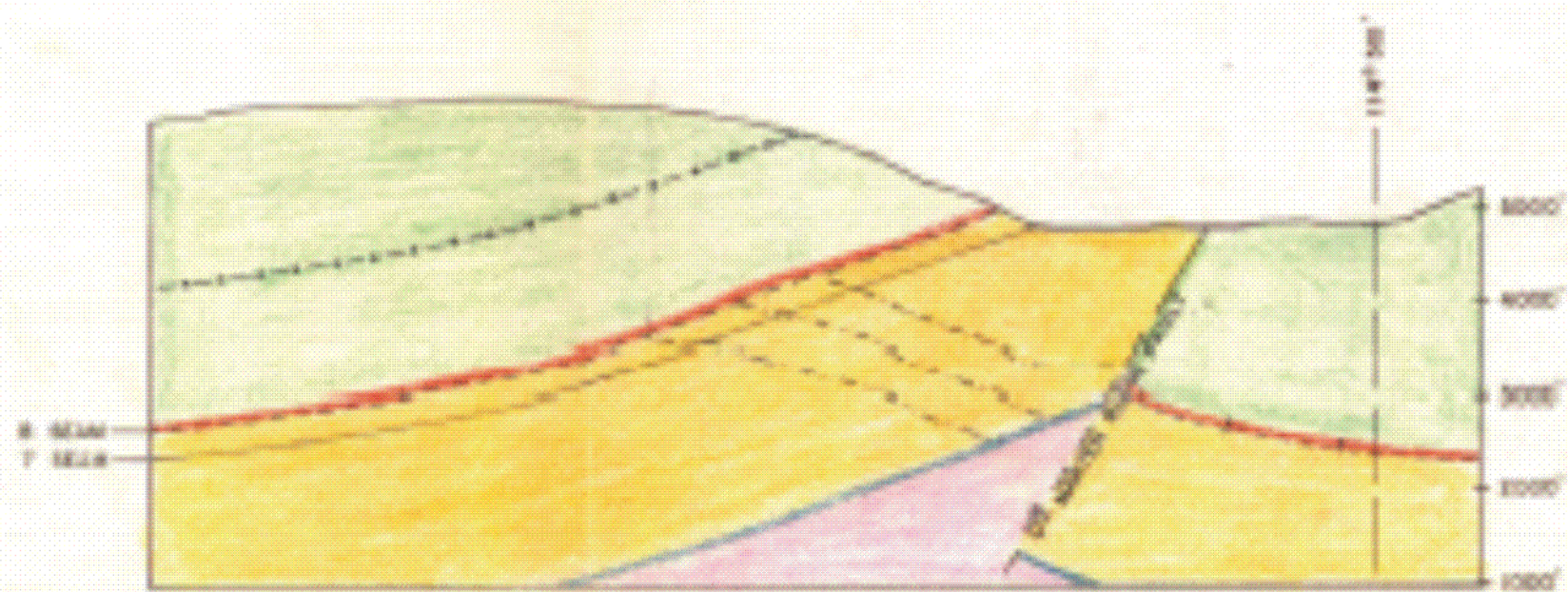
- BLAIRMORE & ELK FORMATIONS
CONGLOMERATE MEMBER
- BASAL ELK CONGLOMERATE
- KOOTENAY FORMATION
- BASAL KOOTENAY SANDSTONE
- FERGIE GROUP
- FAULT
- 1000' VERTICAL SCALE LINE
- 2000'
- 3000'
- 4000'
- 5000'

00343 2/2

KAISER RESOURCES	
MARTEN CREEK COAL AREA	
SECTIONS F & G 1	
<small>DATE</small>	<small>BY</small>
<small>APPROVED</small>	<small>DATE</small>
<small>REVISION</small>	<small>NO.</small>



SECTION E



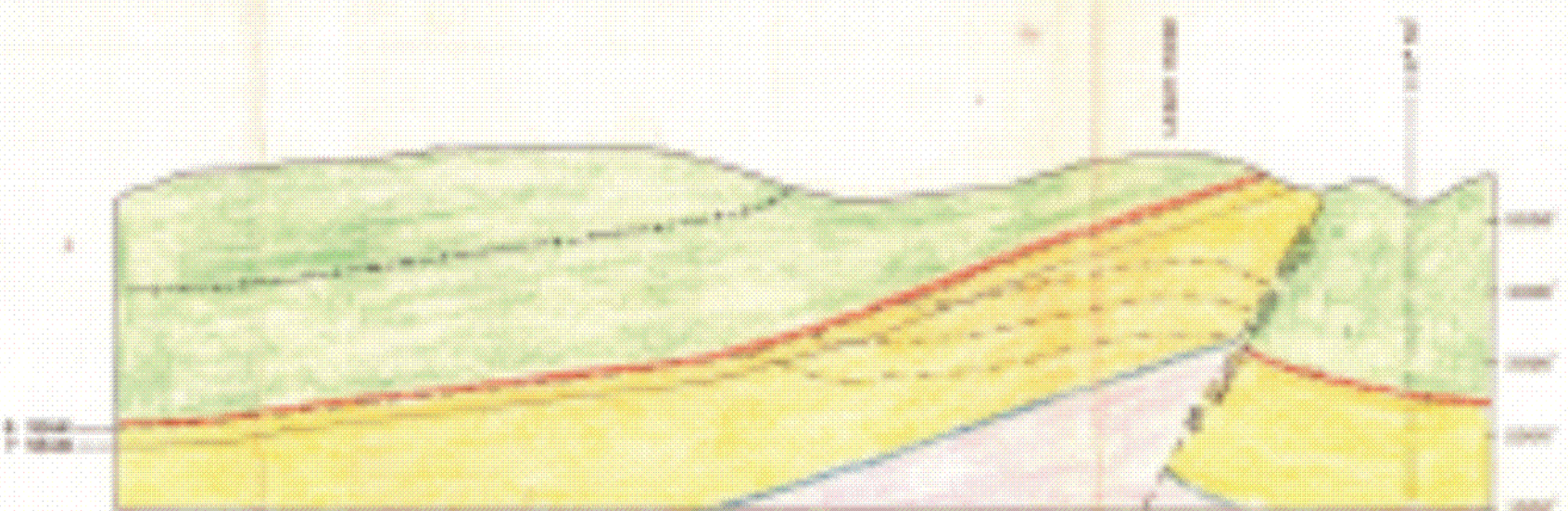
SECTION D

EXPLANATION

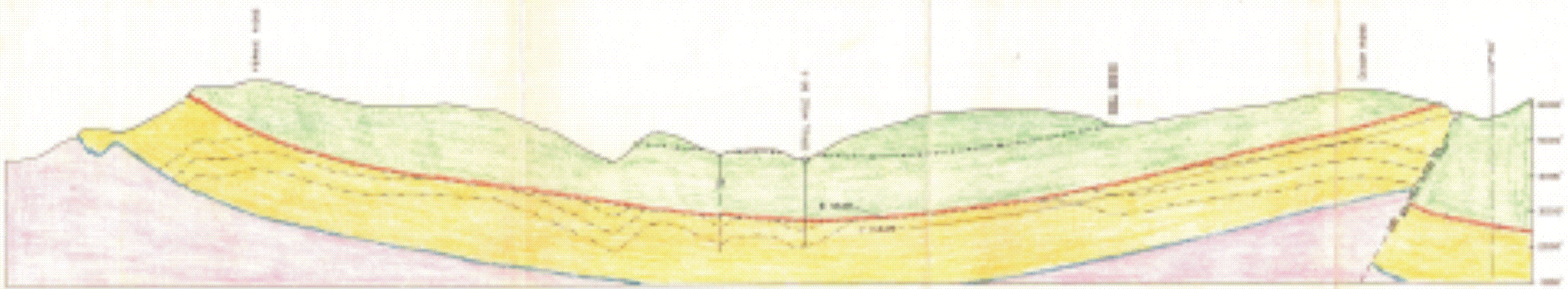
- BLAIRMORE & ELK FORMATIONS
CONGLOMERATE MARKER
- BASAL ELK CONGLOMERATE
- KOOTENAI FORMATION
- BASAL KOOTENAI SANDSTONE
- FERNIE GROUP
- FAULT
- 1000' VERTICAL COVER LINE
- 2000' " " "
- 3000' " " "

00343 2/2

KAISER RESOURCES	
MARTEN CREEK COAL AREA	
SECTIONS D & E ②	
DATE: MARCH, 1961	SCALE: 1" = 2000'
DRAWN BY: [blank]	NO. 188-10-2



SECTION C



SECTION B

- EXPLANATION**
- SLATE & SLY FORMATION
 - IRISH SLY CONGLOMERATE
 - COFFIN FORMATION
 - IRISH COFFIN SANDSTONE
 - IRISH GROUP
 - IRISH GROUP
 - IRISH GROUP
 - IRISH GROUP

00343 3/2

KAISER
INDUSTRIES

WARTEN ORENS COAL AREA

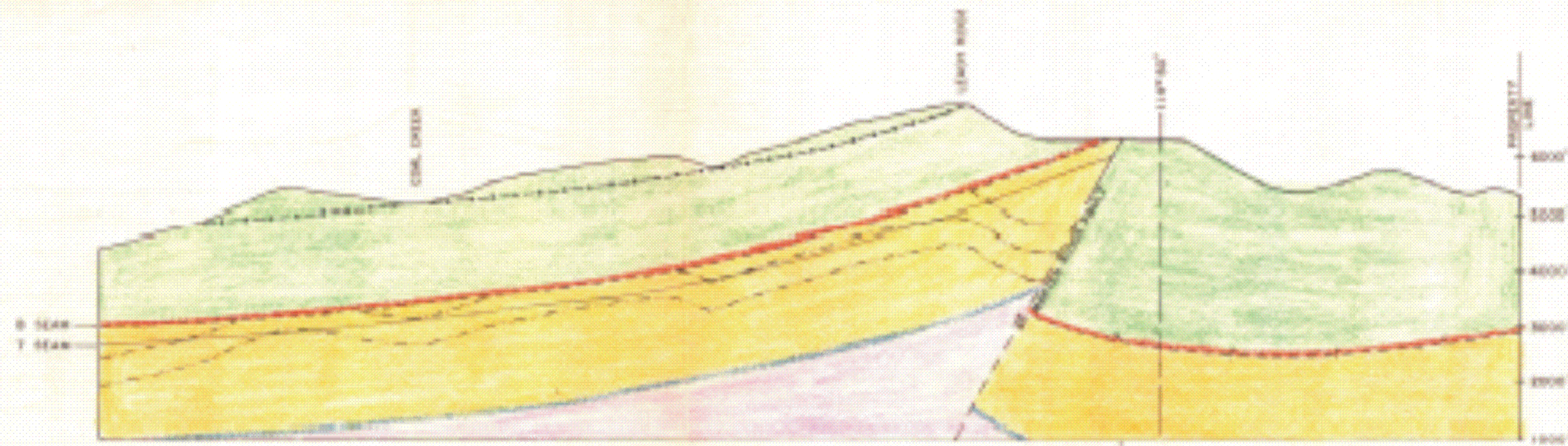
SECTION B & C

DATE: _____

SCALE: _____

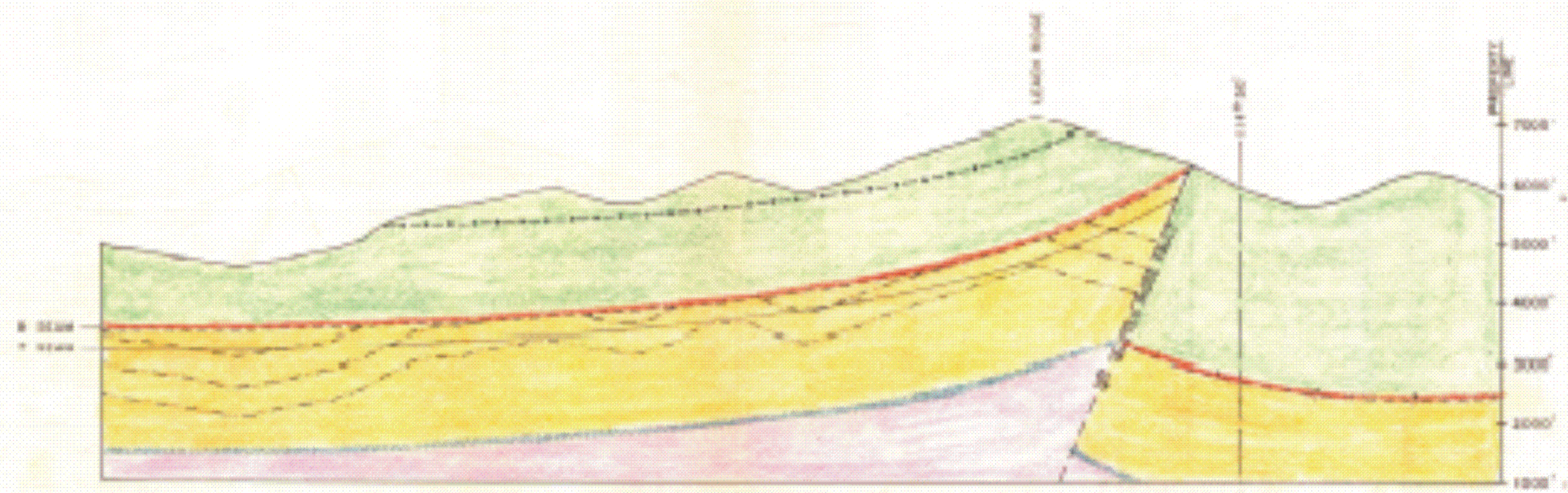
BY: _____

1878-1



SECTION A

- EXPLANATION**
- BLAIRMORE & ELK FORMATIONS (CONGLOMERATE BARRETS)
 - KOOTENAY FORMATION
 - FELMIE GROUP
 - BASAL ELK CONGLOMERATE
 - BASAL KOOTENAY SANDSTONE
 - FAULT
 - 1500' VERTICAL CORE LINE
 - 2000' " " "
 - 2500' " " "



SECTION A'

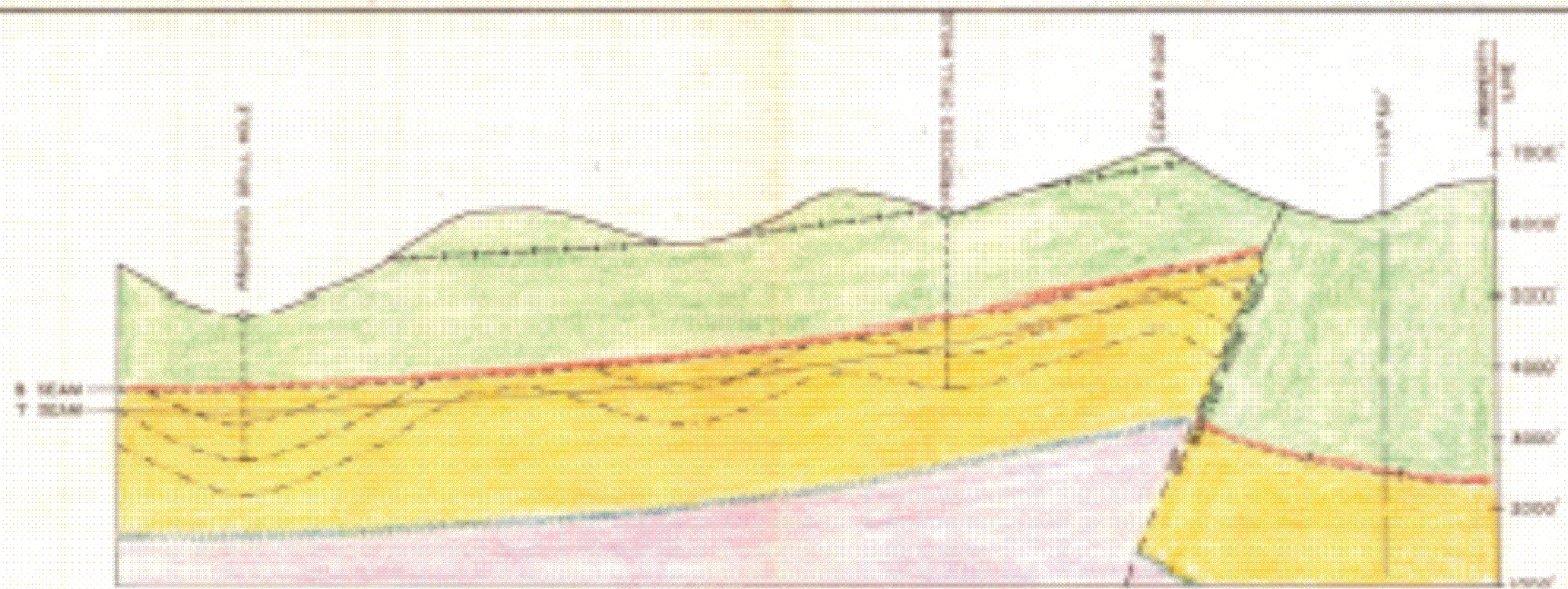
00343 3/2

KAISER RESOURCES INC. - MARYLAND

MARTIN CREEK COAL AREA

SECTION A & A' ④

DATE	BY
LT	TRUCK
MARCH 1971	100-10-4



SECTION A₁



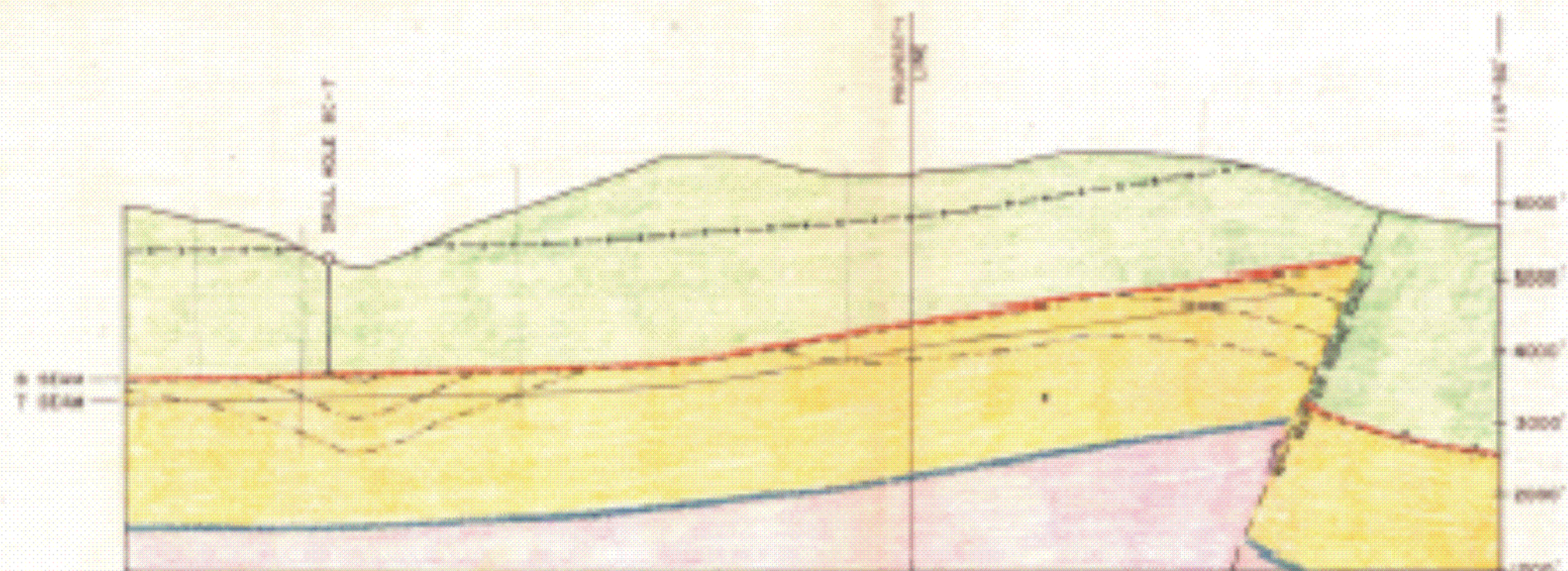
SECTION A₂

EXPLANATION

- BLAIRMORE & ELK FORMATIONS (CONGLOMERATE MASSES)
- BASAL ELK CONGLOMERATE
- KOOTENAY FORMATION
- BASAL KOOTENAY SANDSTONE
- FERNS GROUP
- FAULT
- 1500' VERTICAL COVER LINE
- 2000' " " "
- 2500' " " "

00343 2/3

KAISER RESOURCES <small>MINERAL RESOURCES</small>	
MARTIN CREEK COAL AREA	
SECTIONS A, & A ₂ (5)	
DATE: _____	SCALE: _____
BY: _____	NO. _____
FOR: _____	DATE: _____
BY: _____	NO. _____
FOR: _____	DATE: _____



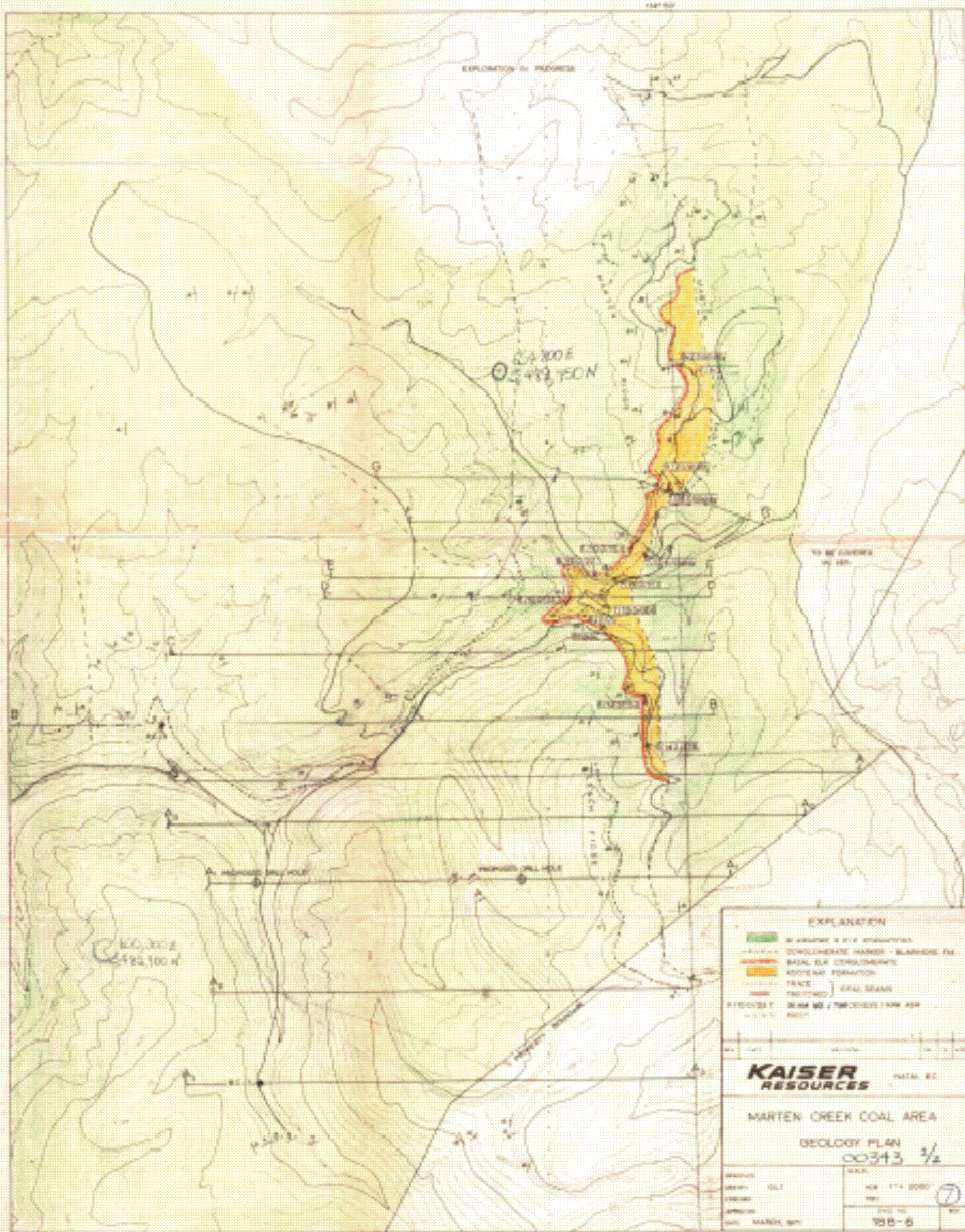
SECTION A₂

EXPLANATION

- BLAINMORE & ELK FORMATIONS
CONGLOMERATE MATRIX
- BASAL ELK CONGLOMERATE
- KOOTENAY FORMATION
- BASAL KOOTENAY SANDSTONE
- FOOTHILLS GROUP
- FAULT
- 1500' VERTICAL COVER LINE
- 2000' " " "
- 3500' " " "

00343 2/2

KAISER RESOURCES <small>INCORPORATED</small>	
MARTIN CREEK COAL AREA	
SECTION A ₂ (6)	
<small>DATE</small> L.T.	<small>SCALE</small> 1" = 2000'
<small>DATE</small> MARCH 1971	<small>NO.</small> 188-10-6



EXPLORATION IN PROGRESS

62,800 E
5422,700 N

100,300 E
5425,100 N

EXPLANATION

	BLANKET & 214 STRATIGRAPHY
	CONGLOMERATE HARDEN - BLANCKHOE FA.
	BASAL SLT CONGLOMERATE
	ROOFING FORMATION
	TRACE
	TRENCH
	COAL SEAMS
	PROPOSED SEAM NO. / THICKNESS / MAX. ASP. / DIST.

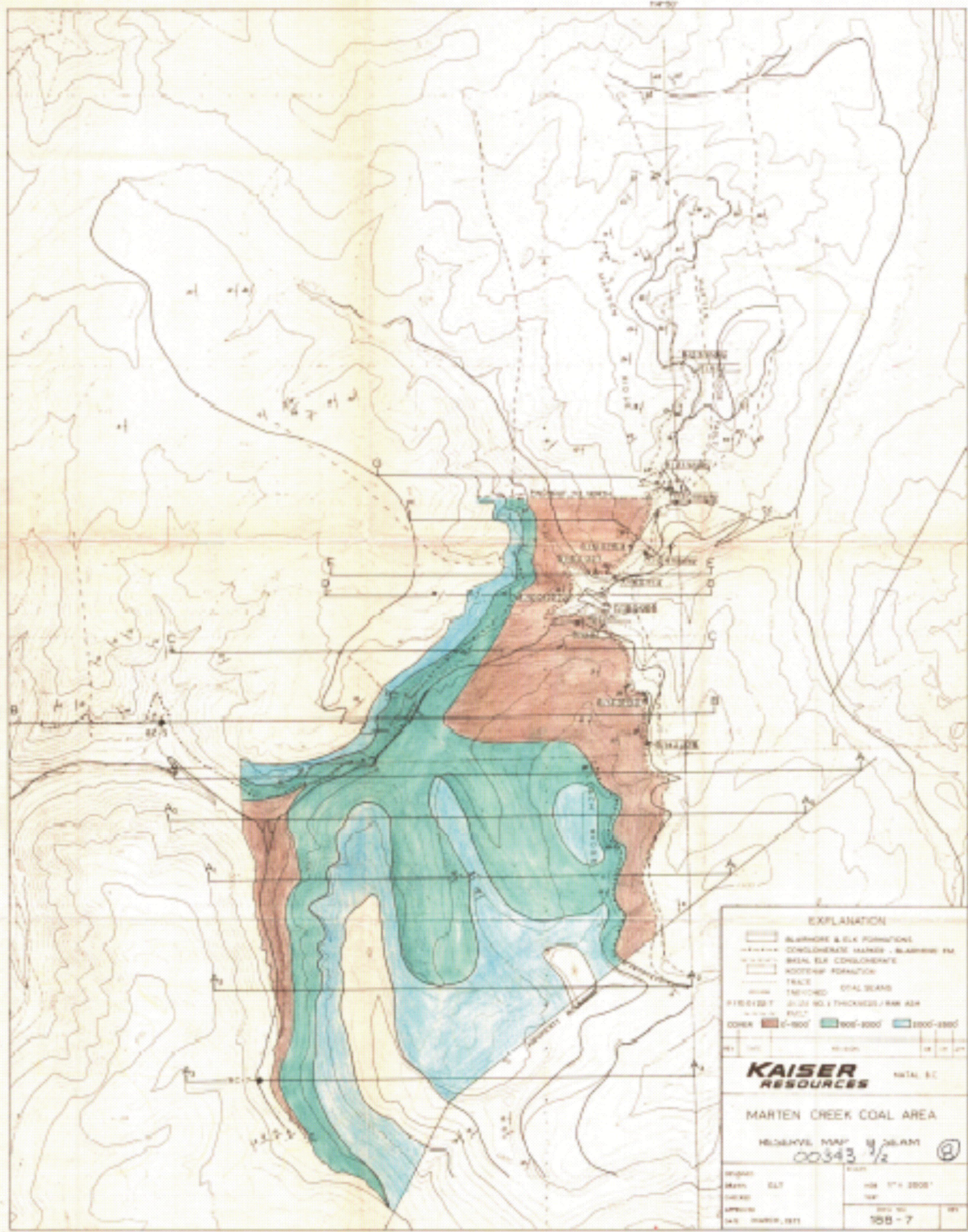
DATE	DESCRIPTION	BY

KAISER RESOURCES NATL. BC

MARTEN CREEK COAL AREA

GEOLOGY PLAN
00343 3/2

PROJECT	DATE	SCALE	 N 1" = 2000' 1985 18B-8
DESIGN: OLT CHECK: [blank] APPROVED: [blank] DATE: MARCH 1971			



EXPLANATION

- BLAINVILLE & ELK FORMATIONS
- CONGLOMERATE MARKER, BLAINVILLE FM
- BASAL ELK CONGLOMERATE
- KOOTENAI FORMATION
- TRACK
- TRINED COAL SEAM
- 0-800'
- 800'-1000'
- 1000'-1800'

KAISER RESOURCES NATAL, B.C.

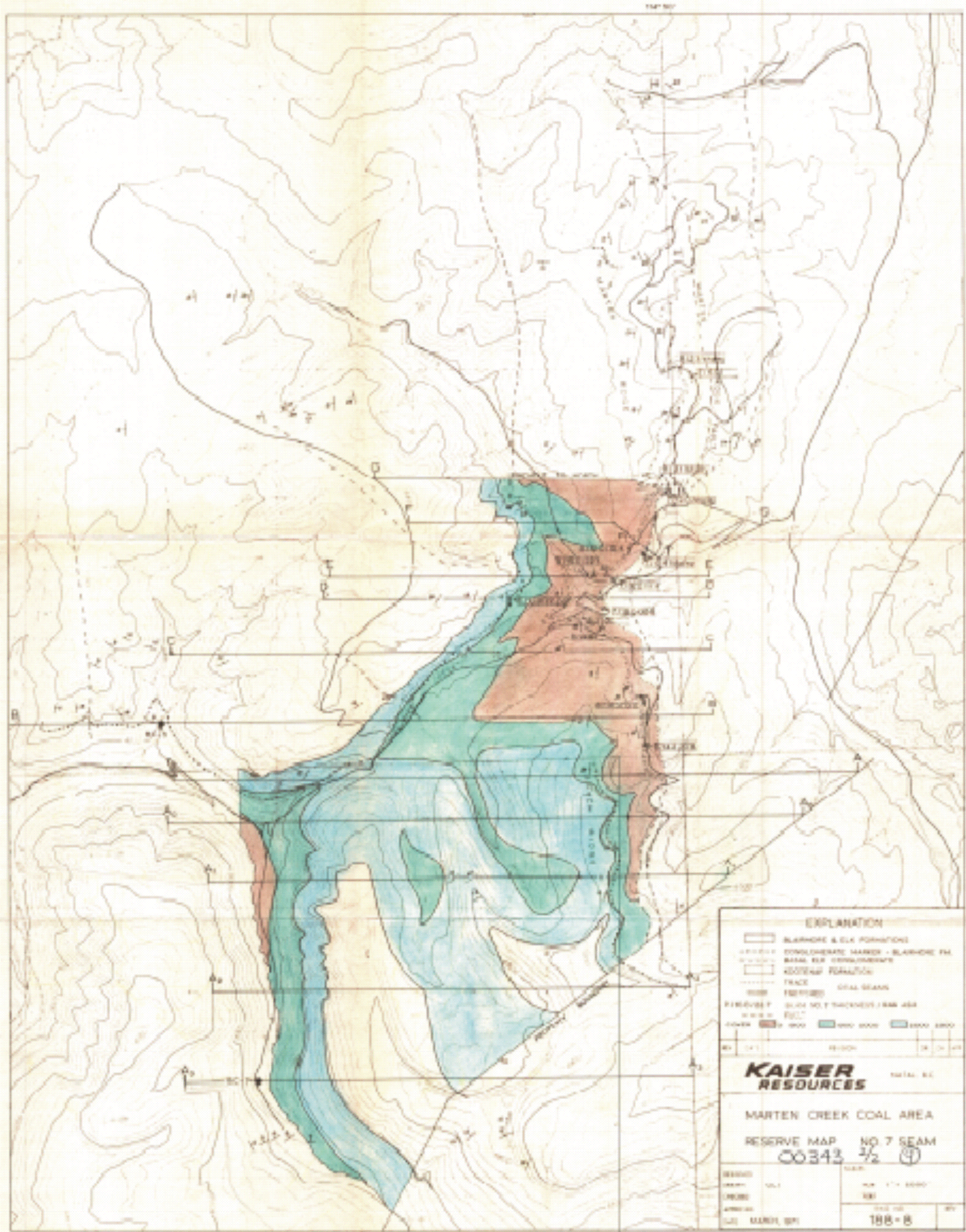
MARTEN CREEK COAL AREA

HELDAY'S MAP 00343 1/2 ©

MARCH, 1971

SCALE: 1" = 2000'

NO. 108-7



EXPLANATION

	BLAINIERE & ELK FORMATIONS
	CONGLOMERATE MARKER - BLAINIERE FM.
	BASAL ELK CONGLOMERATE
	GOSSYP FORMATION
	TRACE
	COAL SEAM
	THINLY BEDDED COAL SEAM
	THICKLY BEDDED COAL SEAM

1000 FT.	1000 FT.	1000 FT.

KAISER RESOURCES TOTAL AC.

MARTEN CREEK COAL AREA

RESERVE MAP NO. 7 SEAM

00343 1/2 ①

DATE	BY
1981	188
JOB NO.	REV.
188-B	1