

K-SHELL-LILLYBURT 81(3)A
Back 2

Lillyburt 1981
Geophysical Logs

B McKinstry

407

4 of 5

ROKE

GAMMA RAY NEUTRON LOGS

OIL ENTERPRISES LTD. CALGARY, ALBERTA

COMPANY: OIL ENTERPRISES LTD.
WELL: 120 - 300A
LOCATION: LITTON WEST

PROV/LOC: BRITISH COLUMBIA
LOG MEASURED FROM: GROUND LEVEL
LOG DEPTH MEASURED FROM: 0.5 M ABOVE FORM. SURFACE

Run No: 006
Date: JUN 23, 1981
Final Reading: 277 M
Left Reading: 0.77

Depth Interval: 2.1 - 2.5
Depth Meter: 277.4

Fluid Type: GEL
Fluid Level: 30
Mfr. Desc: BK

Operating Time: 1.5 HOURS
Track No: 37

Recorded By: JOHNSON

407

EQUIPMENT DATA

GAMMA RAY		NEUTRON	
RUN NO.	006	RUN NO.	006
TOOL MODEL NO.	3.18 CM	TOOL MODEL NO.	3.18 CM
DIAMETER	SCINTILLATION	DIAMETER	PROPORTIONAL
DETECTOR MODEL NO.	10.16 CM	DETECTOR MODEL NO.	MRC-NSS-W
TYPE	2 M	TYPE	265
LENGTH		LENGTH	38.1
DISTANCE TO N. SOURCE		SOURCE MODEL NO.	AmBe
		SPACING	3 CURIES

LOGGING DATA

GENERAL		GAMMA RAY		NEUTRON		API N. UNITS	
RUN NO.	DELTA	ZERO	API G. R. UNITS	T. C.	SENS	PER	LOG DIV
NO.	FROM TO	SETTINGS	DIV. & OR R.	SEC.	SETTINGS	DIV. L OR R	PER LOG DIV
1	0 277	4	12 API	3	500	0L	120 API

REMARKS: LOGGED THROUGH HQ DRILL ROD

GAMMA RAY INCREASES →

NEUTRON INCREASES →

API 120

0 120 2400

DEPTH

0 10 20 30 40 50 60 70 80 90 100 110 120 130 140 150 160 170 180 190 200 210 220 230 240 250 260 270

F.R.

←←←←←

←←←←←

←←←←←

←←←←←

←←←←←

←←←←←

←←←←←

←←←←←

←←←←←

←←←←←

←←←←←

←←←←←

←←←←←

←←←←←

←←←←←

←←←←←

←←←←←

←←←←←

←←←←←

←←←←←

←←←←←

←←←←←

←←←←←

←←←←←

←←←←←

←←←←←

←←←←←

←←←←←

←←←←←

←←←←←

←←←←←

←←←←←

←←←←←

←←←←←

←←←←←

←←←←←

←←←←←

←←←←←

←←←←←

←←←←←

←←←←←

←←←←←

←←←←←

←←←←←

←←←←←

←←←←←

←←←←←

←←←←←

←←←←←

←←←←←

←←←←←

←←←←←

←←←←←

←←←←←

←←←←←

←←←←←

←←←←←

←←←←←

←←←←←

←←←←←

←←←←←

←←←←←

←←←←←

←←←←←

←←←←←

←←←←←

←←←←←

←←←←←

←←←←←

←←←←←

←←←←←

←←←←←

←←←←←

←←←←←

←←←←←

←←←←←

←←←←←

ROKEL SERVICE DENSITLOG
 OIL INTERESTS LTD. CALGARY ALBERTA
 ENGINEERS & GEOSCIENTISTS LTD.

WELL: _____ LOCATION: _____
 UNIT: _____ LEFT: _____
 FIELD: _____

INSTRUMENT: _____
 SERIAL NO.: _____
 DATE: _____
 OPERATOR: _____
 TIME: _____

APPROX. DEPTH: _____
 APPROX. GROUND SURFACE: _____
 APPROX. CASING HEAD: _____
 APPROX. DRILL BIT: _____

DATE: _____
 TIME: _____

APPROVED BY: _____

407

GENERAL DATA
 NO. FROM TO
 1 210 210

DEPTH (FEET)
 210 210

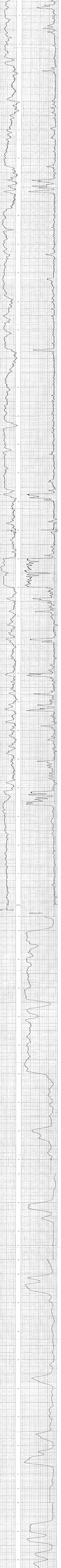
DEPTH (METERS)
 64.0 64.0

WELL: _____

DATE: _____

TIME: _____

APPROVED BY: _____



DEPTH (FEET)	DEPTH (METERS)	WELL	UNIT	FIELD	APPROX. GROUND SURFACE	APPROX. CASING HEAD	APPROX. DRILL BIT
210	64.0						
210	64.0						
210	64.0						

ROKE

FOCUSED BEAM LOG 5 CM
OIL ENTERPRISES LTD. CALGARY, ALBERTA

FILE NO. _____ COMPANY _____
 WELL _____ 12 - 301
 LOCATION _____
 FIELD _____
 PROJECT _____
 DATE _____

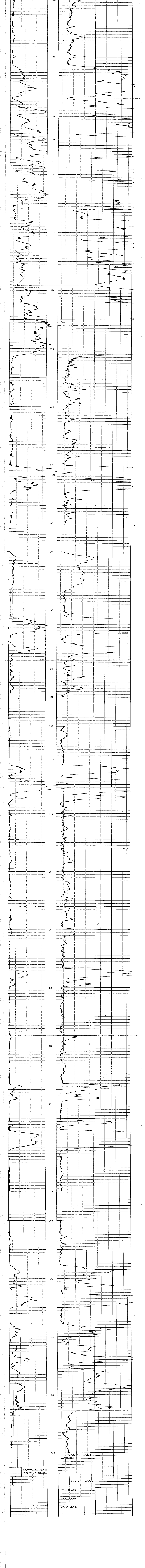
LOGGING SERVICE _____
 LOGGING COMPANY _____
 LOGGING ENGINEER _____
 LOGGING TECHNICIAN _____
 LOGGING SUPERVISOR _____
 LOGGING MANAGER _____

LOGGING NO. _____
 DATE _____
 LOGGING TIME _____
 LOGGING DEPTH _____
 LOGGING INTERVAL _____
 LOGGING RATE _____

LOGGING BY _____
 CHECKED BY _____
 APPROVED BY _____

407

Remarks	FBL # 8	CURRENT RANGE 5	STD 5	MUDFISH RESISTANCE 70	OHMS
	ELECTRODE SONDE 7	CM BEAM WIDTH 60	CM ARRAY		
	PRIMARY 100	OHM/DIV	SECONDARY 500	OHM/DIV	



K.S. ELLIOTT & COMPANY LTD. 8228

GAMMA RAY NEUTRON LOG

ROKE

OIL ENTERPRISES LTD. CALGARY, ALBERTA

COMPANY: GRIFFIN RESOURCES LTD.

WELL: LB-301

LOCATION: ILLIY UNIT

FIELD: M

PRODUCTION: 31000000

FORMATION: 4000

LOG TYPE: 0.5 H

LOG NUMBER: 13

DATE: 13 JULY 1981

LOGGING COMPANY: K.S. ELLIOTT & COMPANY LTD.

LOGGING ENGINEER: K.S. ELLIOTT

LOGGING SUPERVISOR: K.S. ELLIOTT

LOGGING ASSISTANT: K.S. ELLIOTT

LOGGING TECHNICIAN: K.S. ELLIOTT

LOGGING OPERATOR: K.S. ELLIOTT

LOGGING DRIVER: K.S. ELLIOTT

LOGGING ASSISTANT: K.S. ELLIOTT

LOGGING TECHNICIAN: K.S. ELLIOTT

LOGGING OPERATOR: K.S. ELLIOTT

LOGGING DRIVER: K.S. ELLIOTT

LOGGING ASSISTANT: K.S. ELLIOTT

LOGGING TECHNICIAN: K.S. ELLIOTT

LOGGING OPERATOR: K.S. ELLIOTT

LOGGING DRIVER: K.S. ELLIOTT

LOGGING ASSISTANT: K.S. ELLIOTT

LOGGING TECHNICIAN: K.S. ELLIOTT

LOGGING OPERATOR: K.S. ELLIOTT

LOGGING DRIVER: K.S. ELLIOTT

LOGGING ASSISTANT: K.S. ELLIOTT

LOGGING TECHNICIAN: K.S. ELLIOTT

LOGGING OPERATOR: K.S. ELLIOTT

LOGGING DRIVER: K.S. ELLIOTT

LOGGING ASSISTANT: K.S. ELLIOTT

LOGGING TECHNICIAN: K.S. ELLIOTT

LOGGING OPERATOR: K.S. ELLIOTT

LOGGING DRIVER: K.S. ELLIOTT

LOGGING ASSISTANT: K.S. ELLIOTT

LOGGING TECHNICIAN: K.S. ELLIOTT

407

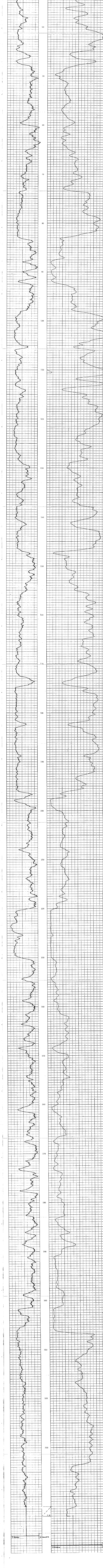
EQUIPMENT DATA

GAMMA RAY				NEUTRON			
RUN NO.	ONE	RUN NO.	TWO	RUN NO.	ONE	RUN NO.	TWO
TOOL MODEL NO.	32 MM	TOOL MODEL NO.	32 MM	TOOL MODEL NO.	PROPORTIONAL	TOOL MODEL NO.	PROPORTIONAL
DIAMETER	32 MM	DIAMETER	32 MM	DIAMETER	32 MM	DIAMETER	32 MM
DETECTOR MODEL NO.	30 DVTILLATION	DETECTOR MODEL NO.	30 DVTILLATION	DETECTOR MODEL NO.	30 DVTILLATION	DETECTOR MODEL NO.	30 DVTILLATION
TYPE	30 DVTILLATION	TYPE	30 DVTILLATION	TYPE	30 DVTILLATION	TYPE	30 DVTILLATION
LENGTH	152 CM	LENGTH	152 CM	LENGTH	152 CM	LENGTH	152 CM
DISTANCE TO N. SOURCE	2 M	DISTANCE TO N. SOURCE	2 M	DISTANCE TO N. SOURCE	2 M	DISTANCE TO N. SOURCE	2 M
SOURCE MODEL NO.	MRC-NSS-W	SOURCE MODEL NO.	MRC-NSS-W	SOURCE MODEL NO.	MRC-NSS-W	SOURCE MODEL NO.	MRC-NSS-W
GENERAL	37	GENERAL	37	GENERAL	37	GENERAL	37
HOBST. TRACK NO.	37	HOBST. TRACK NO.	37	HOBST. TRACK NO.	37	HOBST. TRACK NO.	37
INSTRUMENT TRACK NO.	37	INSTRUMENT TRACK NO.	37	INSTRUMENT TRACK NO.	37	INSTRUMENT TRACK NO.	37
TOOL SERIAL NO.	X-GRN 1254001	TOOL SERIAL NO.	X-GRN 1254001	TOOL SERIAL NO.	X-GRN 1254001	TOOL SERIAL NO.	X-GRN 1254001

LOGGING DATA

GAMMA RAY				NEUTRON			
RUN NO.	ONE	RUN NO.	TWO	RUN NO.	ONE	RUN NO.	TWO
API	120	API	120	API	120	API	120
API IN UNITS	120	API IN UNITS	120	API IN UNITS	120	API IN UNITS	120
PER 100 DIV	120	PER 100 DIV	120	PER 100 DIV	120	PER 100 DIV	120
SETTINGS	100	SETTINGS	100	SETTINGS	100	SETTINGS	100
TYPE	12 APT	TYPE	12 APT	TYPE	12 APT	TYPE	12 APT
SPACING	3 CURIES	SPACING	3 CURIES	SPACING	3 CURIES	SPACING	3 CURIES
STRENGTH	3 CURIES	STRENGTH	3 CURIES	STRENGTH	3 CURIES	STRENGTH	3 CURIES

REMARKS: LOGGED THROUGH IN DRILL HOOD



Recorded by: [Signature] Witnessed by: [Signature]

ROKE

SIDEWALL DEWISLOG

OIL ENTERPRISES LTD. CALGARY, ALBERTA

FILE NO. _____ COMPANY: OIL ENTERPRISES LTD.
 WELL: 49-302 LOCATION: TITUS WEST
 FIELD: _____
 PROVISIONAL WELL IDENTIFICATION: _____
 Log Released From: (SOLID) (WELL) (WELL) (WELL)
 Date Released From: _____
 Log Released From: _____
 Log Released From: _____
 Log Released From: _____
 Log Released From: _____
 Log Released From: _____
 Log Released From: _____

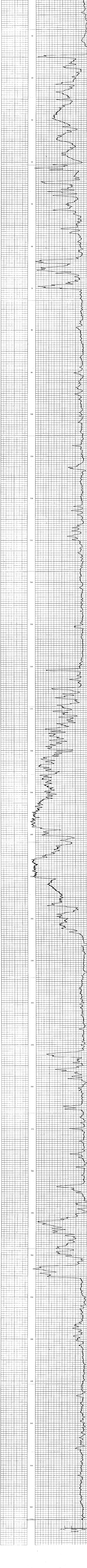
LOG NO. _____
 DATE: _____
 TIME: _____
 OPERATOR: _____
 LOGGERS: _____
 CHECKED BY: _____

DEPTH (M) 363
 DEPTH (FT) 1191
 LOGGING RATE (M/HR) _____
 LOGGING RATE (FT/HR) _____

GENERAL
 RUN NO. 1
 FROM 0
 TO 363
 OF 363
 DEPTH (M) 363
 DEPTH (FT) 1191
 LOGGING RATE (M/HR) _____
 LOGGING RATE (FT/HR) _____

Recorded by: J. J. JENSEN

GENERAL	GAMMA RAY		SIDEWALL DENSITOMETER	
RUN NO.	DEPTH (M)	DEPTH (FT)	LOGGING RATE (M/HR)	LOGGING RATE (FT/HR)
1	0	363	8	8



Sheet 1 of 8 (13)

ROKEL

GAMMA RAY NEUTRON LOG

ON ENTERPRISES LTD. CALGARY ALBERTA

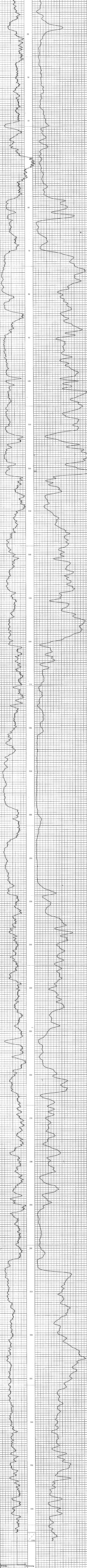
FILE NO. COMPANY
 WELLSITE NO. LOCATION
 FIELD NO. LAYER NAME
 SOURCE NO. SOURCE TYPE
 SERIAL NO. SERIAL NO.
 PLACING DATE
 LOGGING DATE
 LOGGING TIME
 LOGGING SPEED
 LOGGING DEPTH
 LOGGING LENGTH
 LOGGING DISTANCE TO N SOURCE
 LOGGING TRACK NO.
 LOGGING SERIAL NO.

GENERAL
 RUN NO. FROM TO
 SPEED DEPTH TO
 LOGGING TIME
 LOGGING SPEED
 LOGGING DEPTH
 LOGGING LENGTH
 LOGGING DISTANCE TO N SOURCE

EQUIPMENT DATA
 TOOL MODEL NO. 32 MM
 DETECTOR MODEL NO. 102 104
 LENGTH 102 IN
 DISTANCE TO N SOURCE 2 K
 GENERAL
 LOG TRACK NO. 37
 INSTRUMENT TRACK NO. 37
 TOOL SERIAL NO. R-CRM 125A001

GAMMA RAY				NEUTRON			
TOOL NO.	ONE	TOOL NO.	TWO	TOOL NO.	ONE	TOOL NO.	TWO
DIAMETER	32 MM	DIAMETER	32 MM	DIAMETER	32 MM	DIAMETER	32 MM
DETECTOR MODEL NO.	102 104	DETECTOR MODEL NO.	102 104	DETECTOR MODEL NO.	102 104	DETECTOR MODEL NO.	102 104
LENGTH	102 IN	LENGTH	102 IN	LENGTH	102 IN	LENGTH	102 IN
DISTANCE TO N SOURCE	2 K	DISTANCE TO N SOURCE	2 K	DISTANCE TO N SOURCE	2 K	DISTANCE TO N SOURCE	2 K
GENERAL		GENERAL		GENERAL		GENERAL	
LOG TRACK NO.	37	LOG TRACK NO.	37	LOG TRACK NO.	37	LOG TRACK NO.	37
INSTRUMENT TRACK NO.	37	INSTRUMENT TRACK NO.	37	INSTRUMENT TRACK NO.	37	INSTRUMENT TRACK NO.	37
TOOL SERIAL NO.	R-CRM 125A001	TOOL SERIAL NO.	R-CRM 125A001	TOOL SERIAL NO.	R-CRM 125A001	TOOL SERIAL NO.	R-CRM 125A001

GAMMA RAY				NEUTRON			
API	16	API	1000	API	16	API	1000



REMARKS: LOGGED THROUGH IN TRAIL ROD

OIL INSTRUMENTS LTD. CALGARY, ALBERTA

NO. _____ COMPANY _____
 FIELD _____
 LOCATION _____
 WELL _____
 DATE _____

APPROVED BY _____
 OPERATOR _____
 INSTRUMENT NO. _____
 DATE _____

WELL NO. _____
 DATE _____
 TIME _____

GENERAL DATA
 DEPTH 262.5
 FROM 0
 TO 220
 EXP. 150

NO.	DEPTH	TYPE	WELL	DATE
1	0	B		
2	220	A		
3	205	A		
4	165	A		
5	130	A		

NO.	DEPTH	TYPE	WELL	DATE
1	0	B		
2	220	A		
3	205	A		
4	165	A		
5	130	A		

NO.	DEPTH	TYPE	WELL	DATE
1	0	B		
2	220	A		
3	205	A		
4	165	A		
5	130	A		

NO.	DEPTH	TYPE	WELL	DATE
1	0	B		
2	220	A		
3	205	A		
4	165	A		
5	130	A		

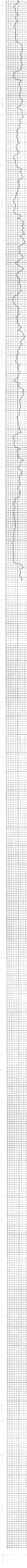
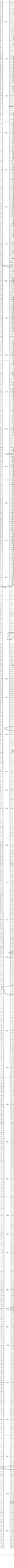
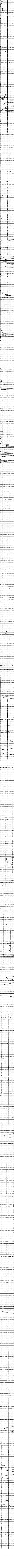
NO.	DEPTH	TYPE	WELL	DATE
1	0	B		
2	220	A		
3	205	A		
4	165	A		
5	130	A		

CALIPER DIAMETER - CM

25
20
15
10

BULK DENSITY - G/CC

2.6
2.5
2.4
2.3
2.2
2.1
2.0
1.9
1.8
1.7
1.6
1.5
1.4
1.3
1.2
1.1
1.0
0.9
0.8
0.7
0.6
0.5



REMARKS: _____

DATE: _____

TIME: _____

WELL: _____

DEPTH: _____

FROM: _____

TO: _____

EXP. _____

NO. _____

DEPTH _____

TYPE _____

WELL _____

DATE _____

TIME _____

WELL NO. _____

DATE _____

TIME _____

FOKE SERIAL DENSILOG

OIL INSTRUMENTS LTD. CALGARY, ALBERTA

NO. _____ COMPANY _____

FIELD _____

LOCATION _____

WELL _____

DATE _____

APPROVED BY _____

OPERATOR _____

INSTRUMENT NO. _____

DATE _____

WELL NO. _____

DATE _____

TIME _____

GENERAL DATA

DEPTH 262.5

FROM 0

TO 220

EXP. 150

NO. _____

DEPTH _____

TYPE _____

WELL _____

DATE _____

TIME _____

WELL NO. _____

DATE _____

TIME _____

POKE

OIL ENTERPRISES LTD. CALGARY ALBERTA
GAMMA RAY NEUTRON LOG

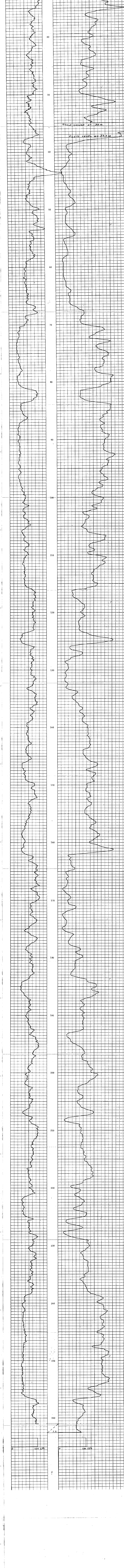
WELL NO. **088521** COMPANY **ENERGY ENTERPRISES LTD.**
 WELL NAME **885 - 303** LOCATION **ILLIX BERT**
 FIELD **SE. 8. G.** PROVINCE **WESTERN CANADIAN**
 COUNTY **ALBERTA** DISTRICT **ILLIX BERT**
 COUNTRY **CANADA** CITY **ILLIX BERT**
 WELL NUMBERED FROM **088521** TO **088521**
 G.P. NUMBER **113**

DATE **0885** TIME **12:30PM**
 LOG NUMBER **407**
 LOGGING UNIT **0885**
 LOGGING COMPANY **0885**
 LOGGING ENGINEER **0885**
 LOGGING SUPERVISOR **0885**
 LOGGING ASSISTANT **0885**
 LOGGING OPERATOR **0885**
 LOGGING TECHNICIAN **0885**
 LOGGING LABORER **0885**
 LOGGING ASSISTANT **0885**
 LOGGING OPERATOR **0885**
 LOGGING TECHNICIAN **0885**
 LOGGING LABORER **0885**
 LOGGING ASSISTANT **0885**
 LOGGING OPERATOR **0885**
 LOGGING TECHNICIAN **0885**
 LOGGING LABORER **0885**

EQUIPMENT DATA			
GAMMA RAY		NEUTRON	
RUN NO.	ONE	RUN NO.	ONE
TOOL MODEL NO.		TOOL MODEL NO.	NEUTRON/NEUTRON
DIAMETER	4.29 CM	DIAMETER	4.29 CM
DETECTOR MODEL NO.		DETECTOR MODEL NO.	PROPORTIONAL
TYPE	90 INFLATION	TYPE	
LENGTH	10.3 CM	LENGTH	133 CM
DISTANCE TO N. SOURCE	1.13 M	SOURCE MODEL NO.	MRC-N-SS-W
GENERAL		SERIAL NO.	589
MOIST TRACK NO.	104	SPACING	43 CM
INSTRUMENT TRUCK NO.	105	TYPE	AMB
TOOL SERIAL NO.	155	STRENGTH	3 CURIES

LOGGING DATA							
GAMMA RAY				NEUTRON			
RUN NO.	0	DEPTH	10	SPEED	4	TC	3
FROM	0	FROM	10	M/MIN	4	SEC	3
TO	10	TO	10	SEC	3	SEC	3
REMARKS		REMARKS		REMARKS		REMARKS	

GAMMA RAY INCREASES				NEUTRON INCREASES			
API	112	API	112				



407

K-SHELL-Lillybush 81631A

ROKE

OIL ENTERPRISES LTD. CALGARY, ALBERTA

GAMMA RAY NEUTRON LOG

FILE NO.	COMPANY	PROVINCE	BRITISH COLUMBIA
LSD	CROMS NEXT RESOURCES LTD.	GROUND LEVEL	GROUND LEVEL
SEC	WELL	LOG MEASURED FROM	GROUND LEVEL
TWP	TBR - 308	WELL DEPTHS MEASURED FROM	GROUND LEVEL
RGE	208		
W			
	LOCATION	FIELD	
	LILLYBUSH		
		Other Services:	
		K.R.	
		CSG	
		G.L.	
			100 METRIC
Run No.	ONE		
Date	AUG. 24, 1981.		
First Reading	48.5 M		
Last Reading	0		
Footage Logged	48.5		
Depth Reached	51		
Depth Driller	0.0		
Casing Hole	0.0		
Casing Driller	A/R /WATER		
Fluid Type	A/R /WATER		
Liquid Level	6.6		
Min. Diam.	13 CM		
Rm @			
Operating Time	1/2 HOUR		
Truck No.	37		

407

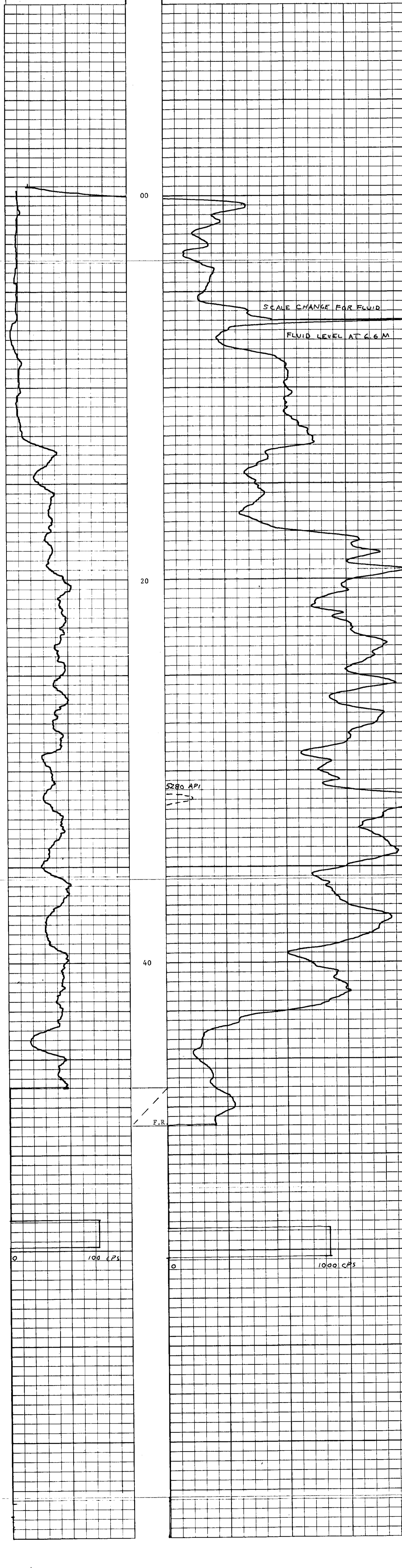
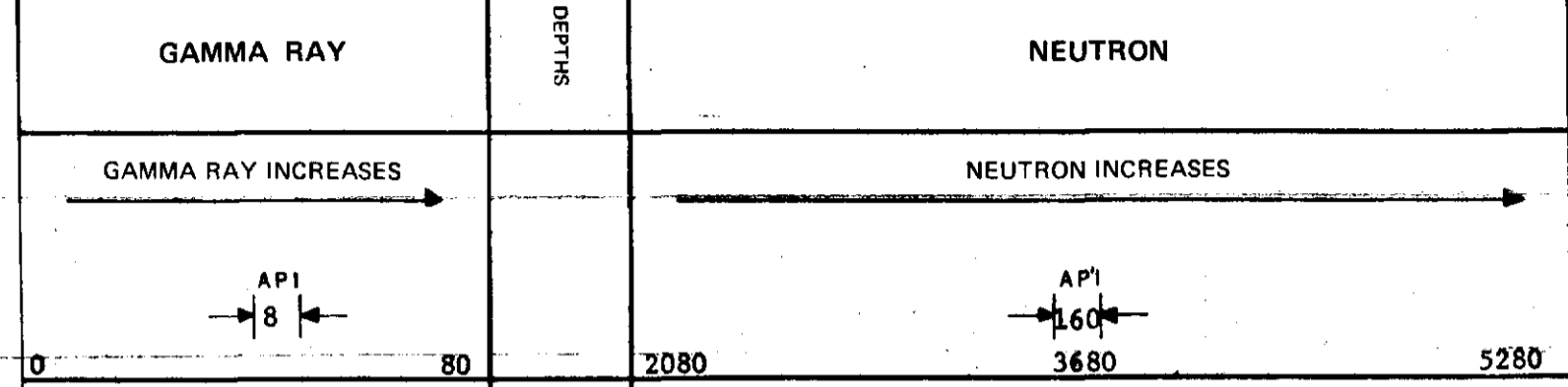
EQUIPMENT DATA

GAMMA RAY		NEUTRON	
RUN NO.	ONE	RUN NO.	ONE
TOOL MODEL NO.		LOG TYPE	NEUTRON/NEUTRON
DIAMETER	32 MM	TOOL MODEL NO.	
DETECTOR MODEL NO.		DIAMETER	32 MM
TYPE	SCINTILLATION	DETECTOR MODEL NO.	
LENGTH	10 CM	TYPE	PROPORTIONAL
DISTANCE TO N. SOURCE	2 M	LENGTH	15 CM
		SOURCE MODEL NO.	MRC-N-SS-W
		SERIAL NO.	265
HOIST TRUCK NO.	37	SPACING	37 CM
INSTRUMENT TRUCK NO.		TYPE	AmBe
TOOL SERIAL NO.	R-GRN 125A009	STRENGTH	3 CURIES

LOGGING DATA

RUN NO.	GENERAL		GAMMA RAY				NEUTRON			
	DEPTHS	SPEED	T.C.	SENS	ZERO	API G. R. UNITS	T. C.	SENS	ZERO	API N. UNITS
	FROM	TO	SEC.	SETTINGS	DIV. L OR R	PER LOG DIV.	SEC.	SETTINGS	DIV. L OR R	PER LOG DIV.
1	0	6.5	4	100	0	8	3	1000	13L	160
1	6.5	48.5	4	100	0	8	3	500	0	80

REMARKS: LOGGED THROUGH DOUBLE WALL DRILL PIPE



Recorded By: FERGUSON Witnessed By: JANKILL

K-SHELL-L116/bwf 61(3)M

GAMMA RAY NEUTRON LOG

ROKE

OIL ENTERPRISES LTD. CALGARY, ALBERTA

FILE NO.	COMPANY	CROSS NEST RESOURCES LTD.	ALBERTA
WELL	W	IRB - 309	
LOCATION	M	LILLYBUSH	
PROVINCE	FIELD	BRITISH COLUMBIA	
PERMANENT DATA	LOG MEASURED FROM	GROUND LEVEL	GROUND LEVEL
WELL DEPTH MEASURED FROM	GROUND LEVEL	GROUND LEVEL	GROUND LEVEL
Run No.	ONE	1981	
Date	APR. 24, 1981		
Foot Reading	149.5 M		
Footage Logged	0		
Depth Reached	150		
Depth Driller	151		
Change Driller	3.8		
Fluid Type	AIR/WATER		
Liquid Level	16		
Min. Depth	13 CM		
Run @			
Operating Time	1 HOUR		
Track No.	37		

407

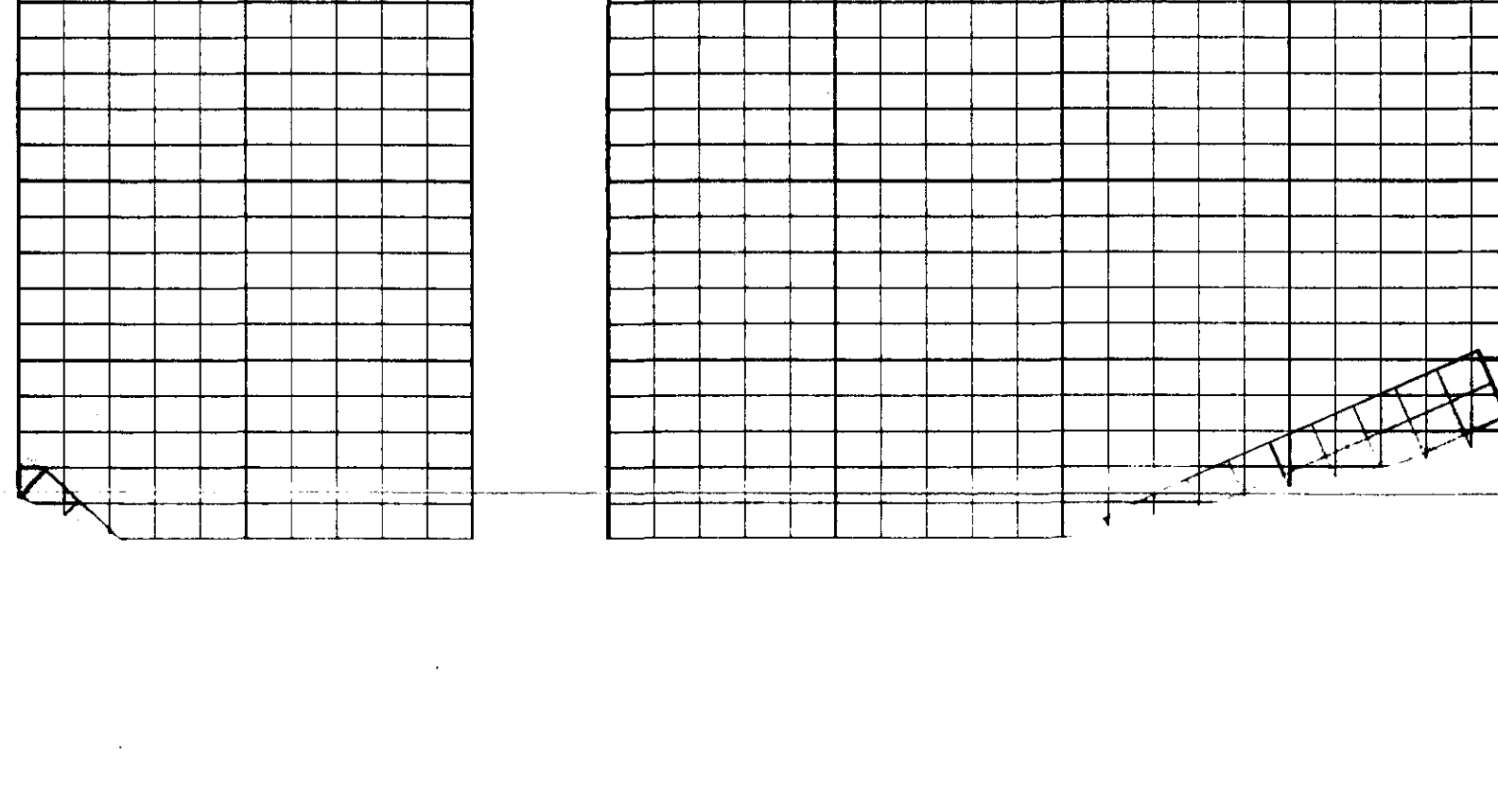
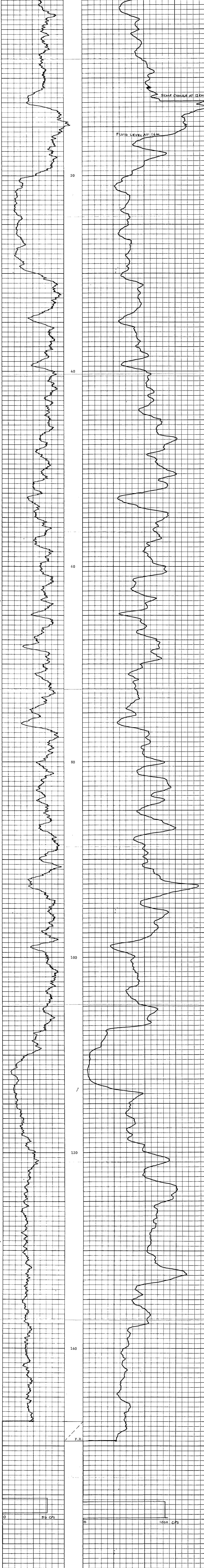
EQUIPMENT DATA

GAMMA RAY				NEUTRON			
RUN NO.	ONE			RUN NO.	ONE		
TOOL MODEL NO.	32 MM			LOG TYPE	NEUTRON/NEUTRON		
DIAMETER	SCINTILLATION			DETECTOR MODEL NO.	32 MM		
DETECTOR MODEL NO.	10 CM			TYPE	PROPORTIONAL		
TYPE	2 M			LENGTH	15 CM		
LENGTH	37			SOURCE MODEL NO.	MRC-N-SS-W		
DISTANCE TO N. SOURCE	37			SERIAL NO.	265		
HOIST TRUCK NO.	37			SPACING	37 CM		
INSTRUMENT TRUCK NO.	R-CRY 125A009			TYPE	AmBe		
TOOL SERIAL NO.				STRENGTH	3 CURIES		

LOGGING DATA

GENERAL				GAMMA RAY				NEUTRON			
RUN NO.	DEPTHS	SPEED	T.C.	SENS	ZERO	API G. R. UNITS	T. C.	SENS	ZERO	API N. UNITS	
1	0	12.4	4	100	0	8	3	1000	0	160	
1	12.4	149.5	4	100	0	8	3	500	0	80	

REMARKS LOGGED THROUGH DOUBLE WALL DRILL PIPE



Recorded By: JERSONSON
 Witnessed By: JANKILL

K-54624-L-1196-wf 8/13/14

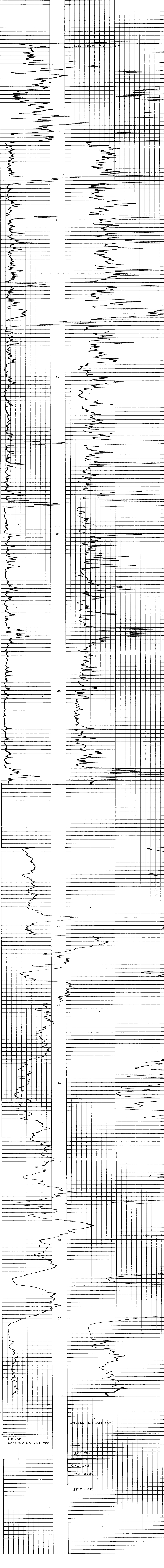
ROKE

OIL ENTERPRISES LTD. CALGARY, ALBERTA

FOCUSED BEAM LOG 5 CM

FILE NO. COMPANY GROM NESE RESOURCES LTD.
 WELLSITE WELLSITE 309
 LOCATION LAINBERG
 PROVINCE BRITISH COLUMBIA
 Log Measured from GROUND LEVEL Elev. from Datum
 Wet Depth Measured from GROUND LEVEL g.c. 100-20 METRIC
 Run No. ONE 112 M
 Date APR 24, 1981
 First Reading 17.3
 Last Reading 94.7
 Footage Logged 112.4
 Depth Driller 151
 Casing Rock 3.8
 Casing Driller 4.0
 Fluid Type A.R./MATER
 Liquid Level 17.3
 Min. Diam. 12 CM
 Rm. @ 2 C 33 @ 11 C
 Operating Time 1 HOUR
 Trawl No. 37

Remarks FBL # 8 CURRENT RANGE LOW MUDFISH RESISTANCE 900 OHMS
 ELECTRODE SONDE 5 CM BEAM WIDTH 60 CM ARRAY
 PRIMARY 50 OHM/DIV SECONDARY 200 OHM/DIV



LOGGED ON 200 TAP
 200 TAP
 CAL ZERO
 REC ZERO
 STOP ZERO
 1 K TAP LATCHED ON 200 TAP

Recorded By: ERICSON
 Witnessed By: JANITZ

13 407

K-SHELL-Lillykay 8/23/84

ROKE

GAMMA RAY
SIDEWALL DENSITOG
CALIPER

OIL ENTERPRISES LTD. CALGARY, ALBERTA

FILE NO. _____ COMPANY: CROOKS RESS ASSOCIATES LTD.
 LSO _____ WELL: LBR - 309
 SEC _____ TIME: _____
 TWC _____ LOCATION: LILLABURR
 M _____ FIELD: _____
 PROV: BRITISH COLUMBIA
 PROPOSED DATE: _____ GEN. TEL. DIR. _____
 LOG RECORDED FROM: EXCISED LOGS
 WELL DEPTH MEASURED FROM: ABOVE BURNED POINT
 EL: 100-20 METERS TO

Run No. _____ ONE
 Date: AUG. 26, 1981.
 First Reading: 0
 Last Reading: 111.5
 Fouling Logpad: 112.6
 Depth Reached: 151

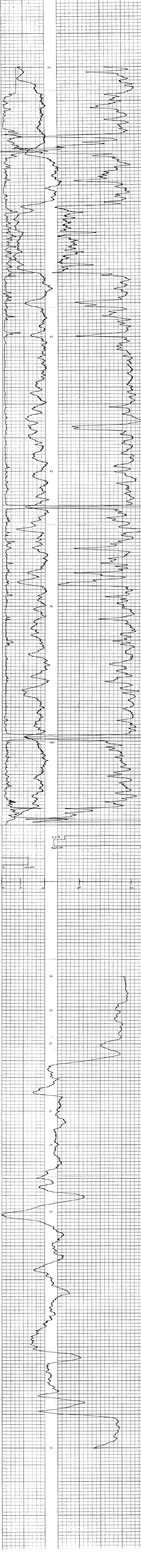
Depth Dilute: 151
 Count Rate: 3.8
 Count Dilute: 4.0
 Fluid Type: AIR/WATER
 Liquid Level: 16
 Min. Diam: 13 CM

Operating Time: 2 HOURS
 Tool No: 31

Recorded By: JERGENSON Witnessed By: JANCILL

RUN NO.	DEPTH		SPEED M/MIN	T.C. SEC.	GAMMA RAY			SIDEWALL DENSITOG		
	FROM	TO			SENG SETTINGS	ZERO DIV. L OR R	API G.R. UNITS PER LOG DIV.	T.C. SEC.	SENG SETTINGS	ZERO DIV. OR R
1	0	111.5	8				0.5	5K	2.5R	239.6
EXP.	18	32	4				0.5	5K	2.5R	239.6
1	0	112.5	4	3	100	0				

REMARKS: DENSITY TOOL #128AS
 HOLE CAVED AT 112.5 AFTER RODS WERE PULLED



407

K.S. WELLS - Lillooet 8/23/64

ROKE SIDEWALL DENSITOG
OIL ENTERPRISES LTD. CALGARY, ALBERTA

FILE NO. _____
COMPANY CROSSBERRY, BASSINGBO, LTD.
WELL 1A - B - 30A
LOCATION ILLIX BUILT

FIELD _____
PROVINCIAL BRITISH COLUMBIA
PERMITS (GR) 781, D18
CREATED 2/27/64
CREATED 2/27/64
CREATED 2/27/64

DATE 2 JULY 1964
RUN NO. 0133 K
Final Reading 0

Footings Logged 135 M
Depth Reached 233.2
Depth Below 13
Casing Depth 12
Fluid Type AIR WATER
Liquid Level 3
Min. Depth 12.7

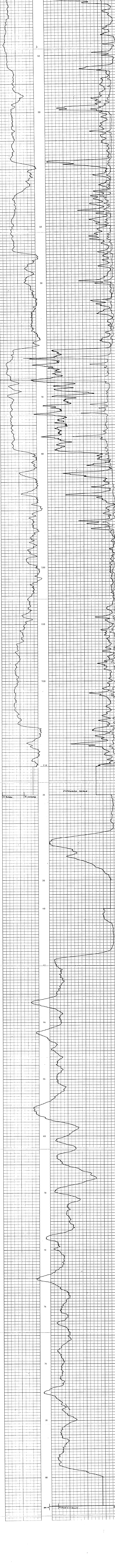
Operating Time 24 HOURS
Tool No. 31

Recorded By JOHNSON
Witnessed By _____

407

RUN NO.	DEPTHS		SPEED M/MIN	T.C. SEC.	SENS SETTINGS	ZERO DIV. L OR M	API G.R. UNITS PER LOG DIV.	SIDEWALL DENSITOG		
	FROM	TO						T.C. SEC.	SENS SETTINGS	ZERO DIV. OR A
1	0	135	15	15			0.2	5K	2.65R	239.60
EXP.	26	30	15	15			0.2	5K	2.65R	239.60
11	60	80	15	15			0.2	5K	2.65R	239.60
1	0	135	15	15						

REMARKS: DENS TOOL #128AS
CAL TOOL #222



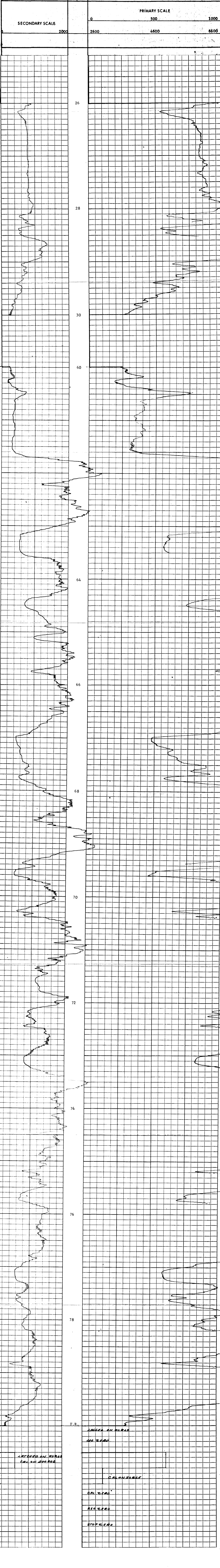
ROKE

FOCUSED BEAM LOG 5 CM
 OIL ENTERPRISES LTD. CALGARY, ALBERTA

K-SHEL Well Logbook 8131A

FILE NO. _____ COMPANY CONQUEST RESOURCES LTD.
 WELL 13 - N - 304
 LOCATION ELIX BERT
 PROVINCE BRITISH COLUMBIA
 PERMIT/ORDER NO. GRAND JAZZ
 WELL DEPTH MEASURED FROM GROUND LEVEL
 DATE 2 JULY 1981
 LAST READING 80
 FLUID TYPE WATER
 MIN. DIRM. 12.7
 TEM. @ C 40.0 @ 11.0
 OPERATING TIME 1 HOUR
 TRUCK NO. 37
 RECORDED BY JORGENSEN WITNESSED BY _____

Remarks FBI # 8 CURRENT RANGE HIGH MUDFISH RESISTANCE 180 OHMS
 ELECTRODE SONDE 5 CM BEAM WIDTH 60 CM ARRAY
 PRIMARY 50 OHM/DIV SECONDARY 200 OHM/DIV



F.R. LOCKED ON SURFACE
LOG ZERO
WITCHED ON SURFACE
CAL ON SURFACE
CAL ON SURFACE
LOG ZERO
REC ZERO
STOP ZERO

407

K-5466-L-10664 8(19)

ROKE

FOCUSSED BEAM LOG
20 CM

OIL ENTERPRISES LTD. CALGARY, ALBERTA

FILE NO. COMPANY
WELL NO. LOCATION
DATE

PROV. FIELD

PROV. DIST.

PROV. DIST.

PROV. DIST.

PROV. DIST.

PROV. DIST.

PROV. DIST.

PROV. DIST.

PROV. DIST.

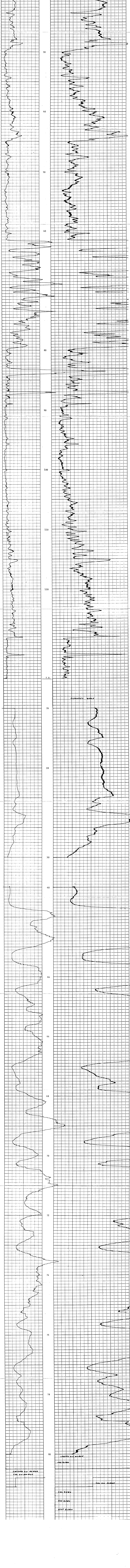
PROV. DIST.

PROV. DIST.

PROV. DIST.

PROV. DIST.

Remarks FBL # 8 CURRENT RANGE HIGH MUDFISH RESISTANCE 180 OHMS
ELECTRODE SONDE 20 CM BEAM WIDTH 100 CM ARRAY
PRIMARY 50 OHM/DIV SECONDARY 200 OHM/DIV



STOP ZERO
RE ZERO
CAL ON ZERO
ANGLED ON SCALE
CAL ON SCALE

K-SHELL-Lillyburt 81(3)A

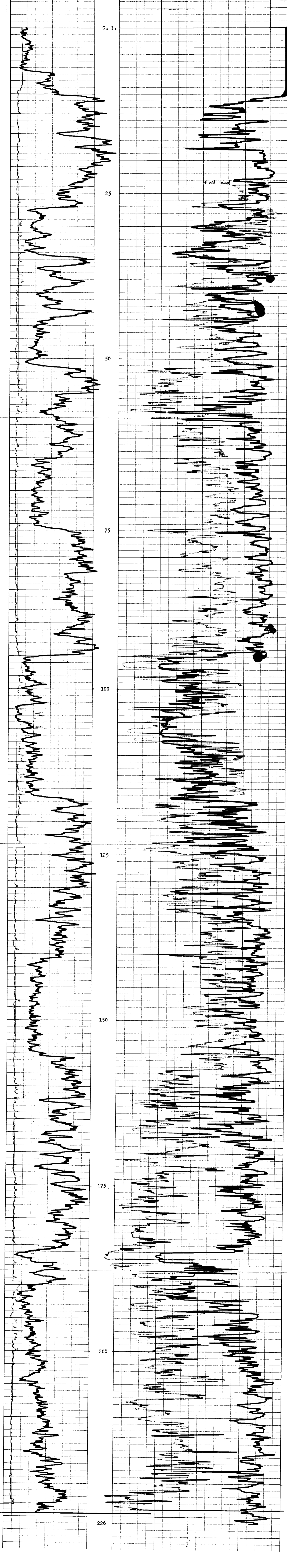
DAVIES EXPLORATION LOGGING LTD.	
COMPANY	CROWNEST RESOURCES LIMITED
HOLE NUMBER	305 - R
LOCATION	Lillyburt
PROVINCE	B. C.
ELEVATION	
LOG TYPE	CALIPER, NATURAL GAMMA, RESISTIVITY, DENSITY
DATE	July 4, 1961
DRILLED DEPTH	240m
LOGGED DEPTH	226m
ZERO DATUM	G. I.
HOLE DIAMETER	5 1/8"
CASING LENGTH	11m
REMARKS	

407

19

CALIPER NATURAL GAMMA RESISTIVITY 10 DENSITY

3



K-SME-11-116-1007 81(3)A

DAVIES EXPLORATION LOGGING LTD.

COMPANY: CROSSBUSH RESOURCES LIMITED

HOLE NUMBER: 305 - R

LOCATION: Lillybush

PROVINCE: B.C.

ELEVATION: _____

LOG TYPE: RESISTIVITY, NATURAL GAMMA, DENSITY

DATE: July 4, 1981

DRILLED DEPTH: 24.0m

LOGGED DEPTH: 19.4m

ZERODIAPHRAMETER: C. 1.

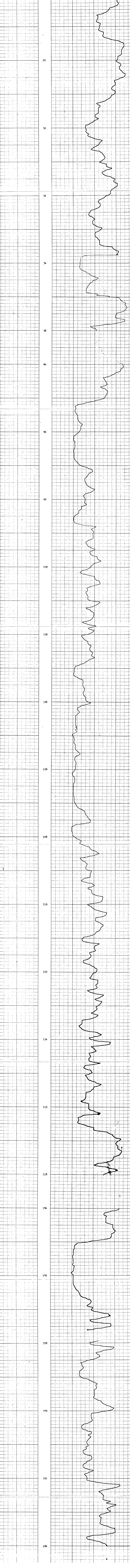
HOLE DIAMETER: 5 1/8"

LOGGING LENGTH: 11m

REMARKS: Detail Scale.

407

(20)





DAVIES EXPLORATION LOGGING LTD.

CROSSNEST RESOURCES LIMITED

COMPANY

HOLE NUMBER 305R

LOCATION Lillyburt

PROVINCE B. C.

ELEVATION

LOG TYPE Natural Gamma & Neutron

DATE July 4, 1981

DRILLED DEPTH 240m

LOGGED DEPTH 240m

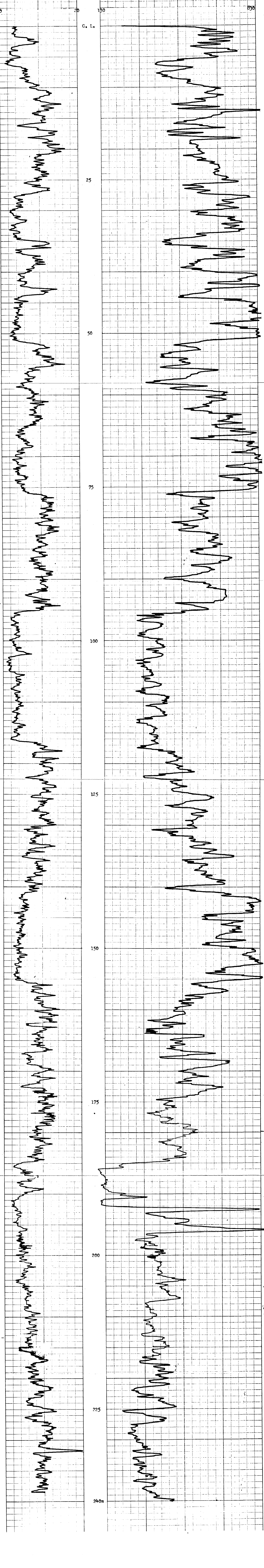
ZERO DATUM C. I.

HOLE DIAMETER 5 1/8"

CASING LENGTH T.D. (Double wall pipe)

REMARKS

407



K-516-C-11 (Rev. 7/81)

ROKE

GAMMA RAY NEUTRON LOG

OIL ENTERPRISES LTD. CALGARY, ALBERTA

FILE NO. COMPANY. CRANE WEST RESOURCES LTD.
 WELL. WB - 306
 TWP. 13N
 RGE. 13W
 LOCATION. BLISSBET

PROVINCE. BRITISH COLUMBIA
 FIELD. BRITISH COLUMBIA
 OTHER SERVICE FIRM. BRITISH COLUMBIA
 LOG MANUFACTURED FROM. GROUND LEVEL
 WEL DEPTH MEASURED FROM. GROUND LEVEL
 ABOVE FROM. Datum
 C.S.G. 100-20 SERVICE

LOG MANUFACTURED FROM. GROUND LEVEL
 WEL DEPTH MEASURED FROM. GROUND LEVEL
 ABOVE FROM. Datum
 C.S.G. 100-20 SERVICE

Run No. 001
 Date. 1988 01 13B1
 File Location. 0
 Log Length. 210
 Log Depth. 210.3

Change Drive. 18.3
 Fluid Type. W/O WATER
 Liquid Level. 108.3
 Well. RB

Operating Time. 3.5 HOURS
 Time Used. 37

Recorded By. PERKINSON
 Witnessed By. STARR

407

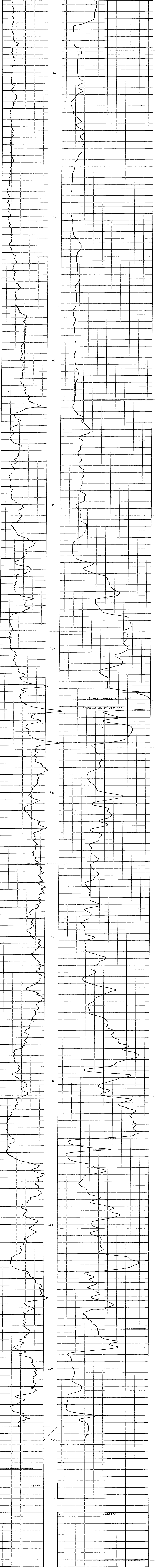
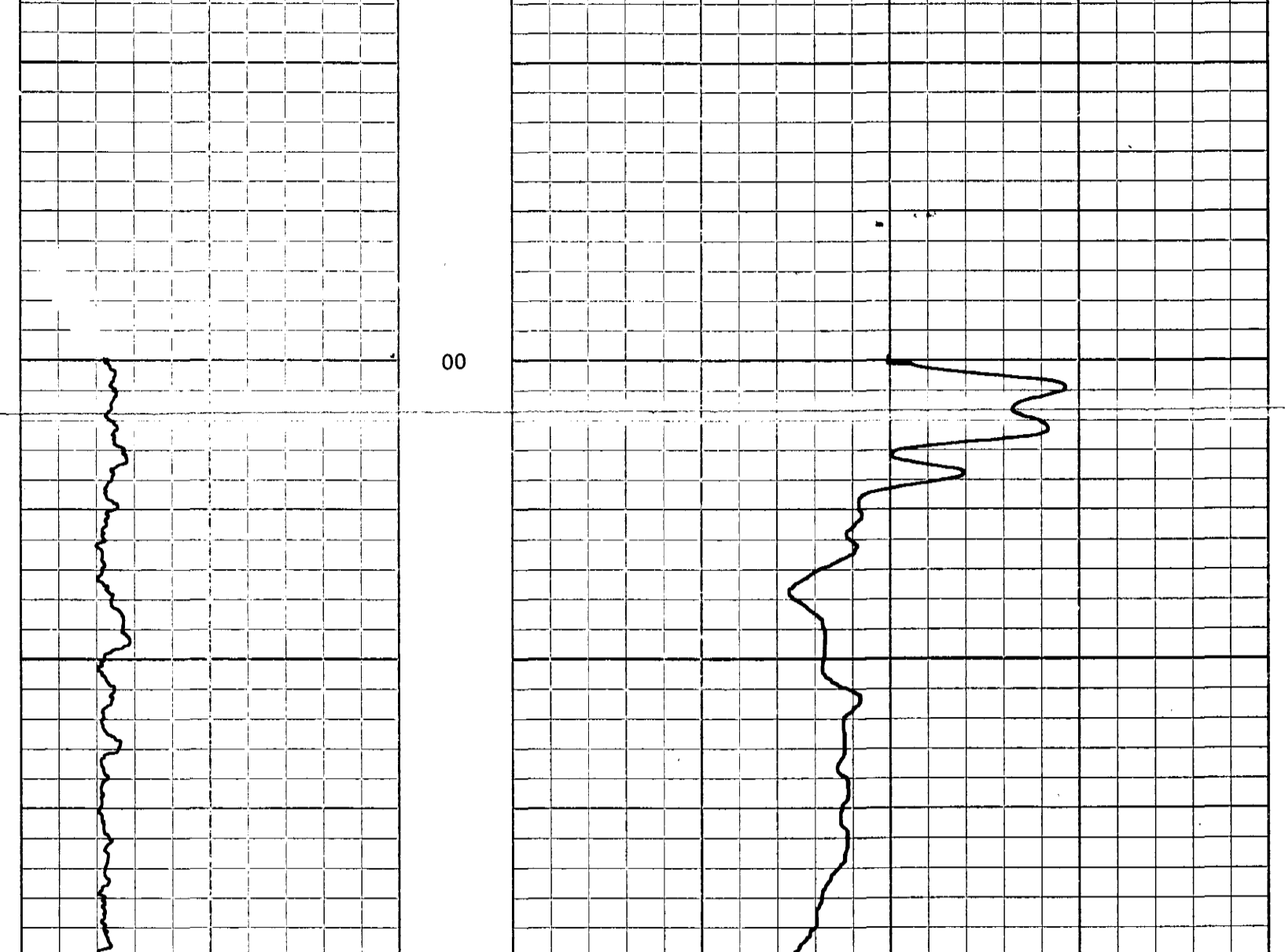
EQUIPMENT DATA

GAMMA RAY		NEUTRON	
RUN NO.	001	RUN NO.	001
TOOL MODEL NO.	32 NM	TOOL MODEL NO.	32 NM
DIAMETER	SCINTILLATION	DIAMETER	PROPORTIONAL
LENGTH	1.0 CM	LENGTH	15 CM
DISTANCE TO N. SOURCE	2 W	SOURCE MODEL NO.	MRC-N-SS-W
GENERAL		SERIAL NO.	265
HOIST TRUCK NO.	37	SPACING	37 CM
INSTRUMENT TRUCK NO.		TYPE	AmBe
TOOL SERIAL NO.	R-GRN 123A009	STRENGTH	3 CURIES

LOGGING DATA

GAMMA RAY				NEUTRON						
RUN NO.	DEPTH	SPEED	T.C.	SENS	ZERO	API G. R. UNITS	T.C.	SENS	ZERO	API N. UNITS
	TO	M	SEC	SETTINGS	DIV. L OR R	PER LOG DIV.	SEC.	SETTINGS	DIV. L OR R	PER LOG DIV.
1	0	107	4	0	0	15	3	1000	0	100
1	107	210	4	100	0	15	3	500	0	50

REMARKS: LOGGED THROUGH HQ DRILL RODS TO 88.5 M.



K-51254-4-16-67 02314

ROKE

SIDWALL CALIPER
 OIL ENTERPRISES LTD. CALGARY ALBERTA
 GAMMA RAY

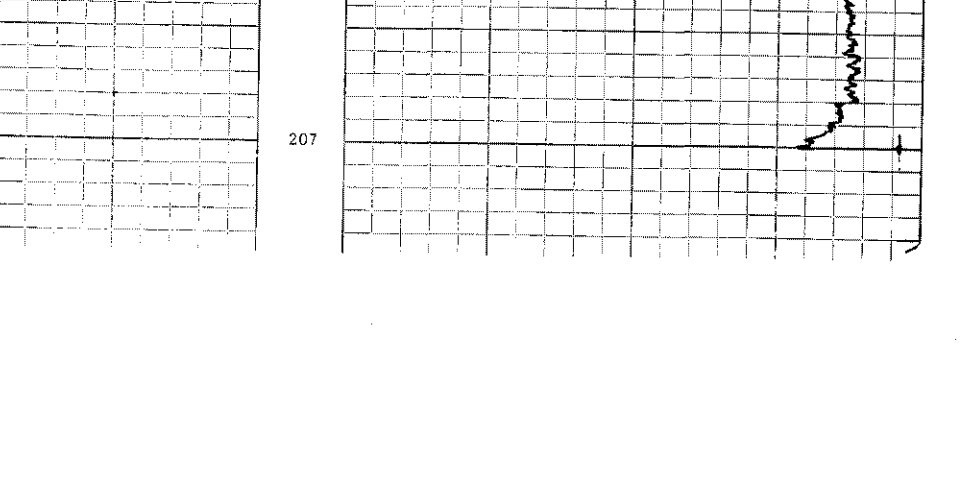
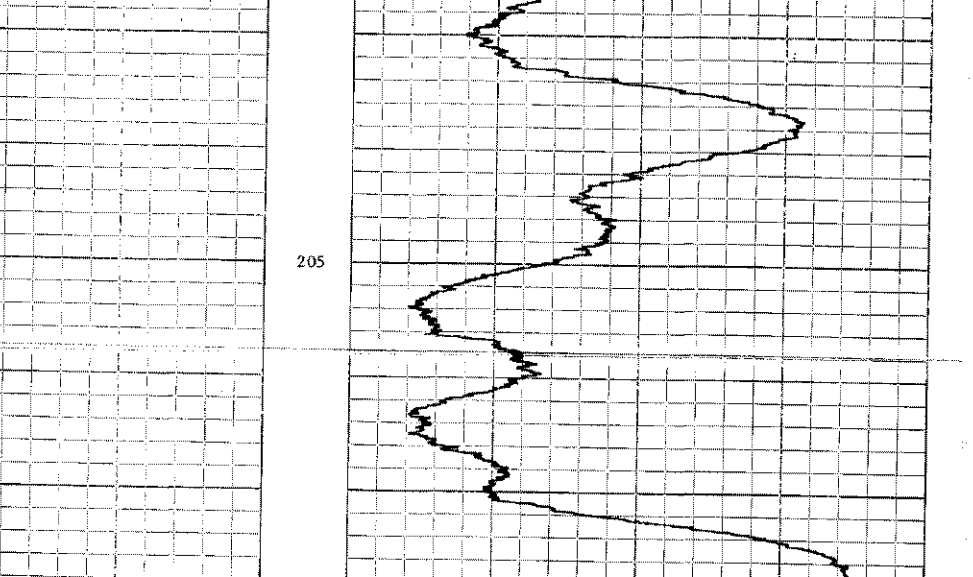
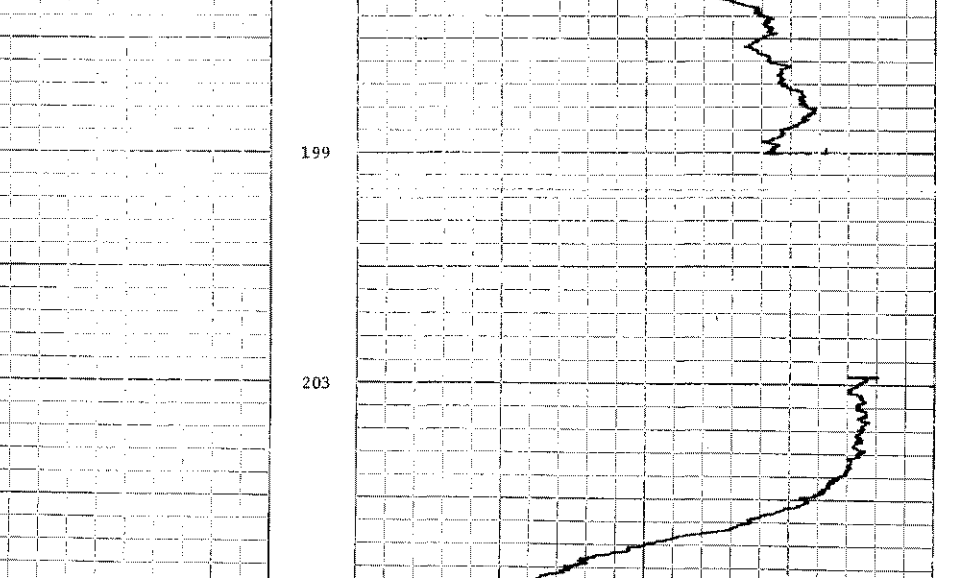
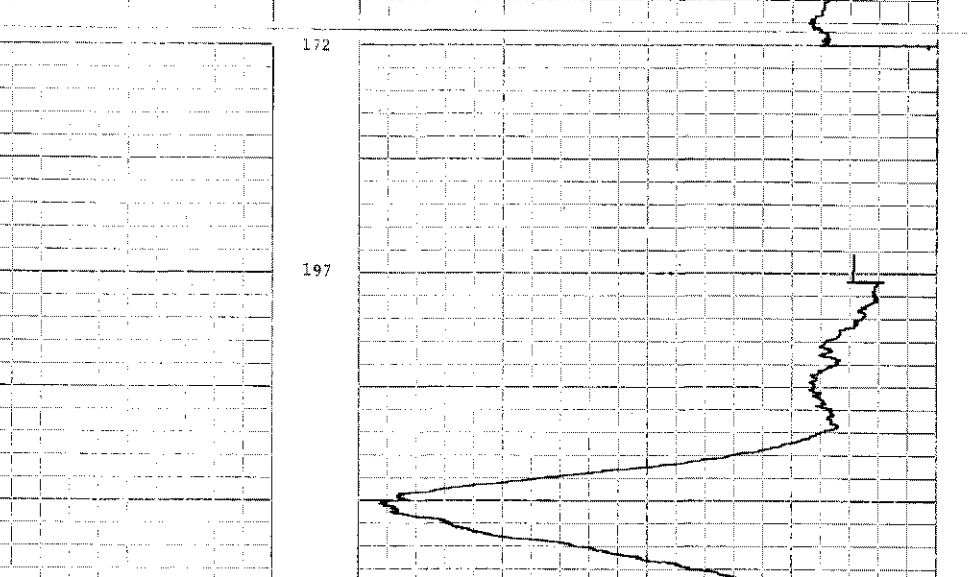
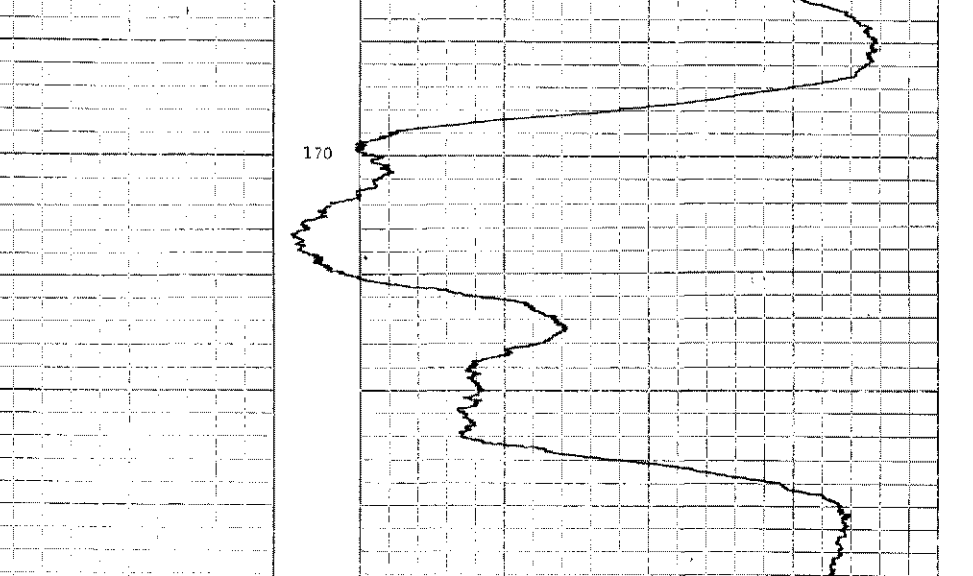
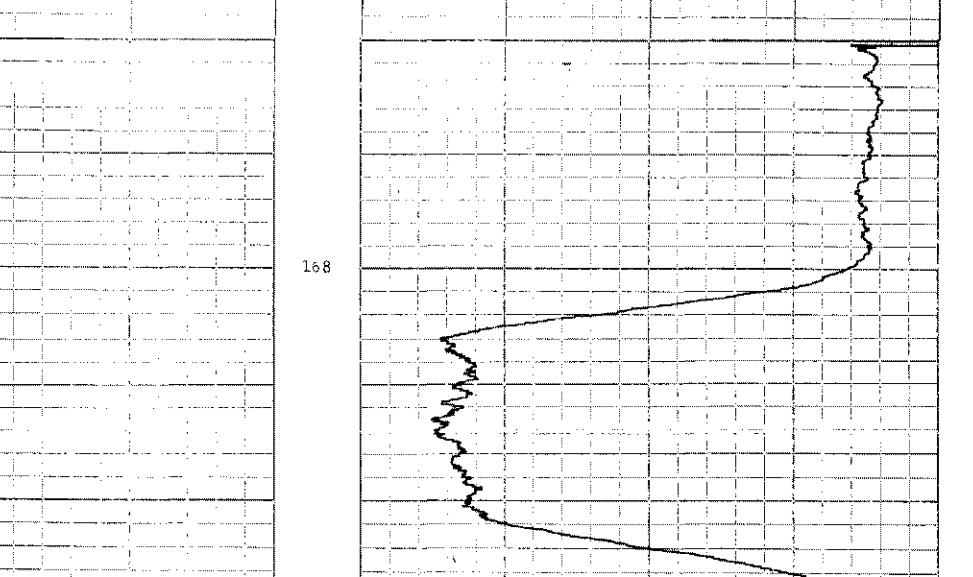
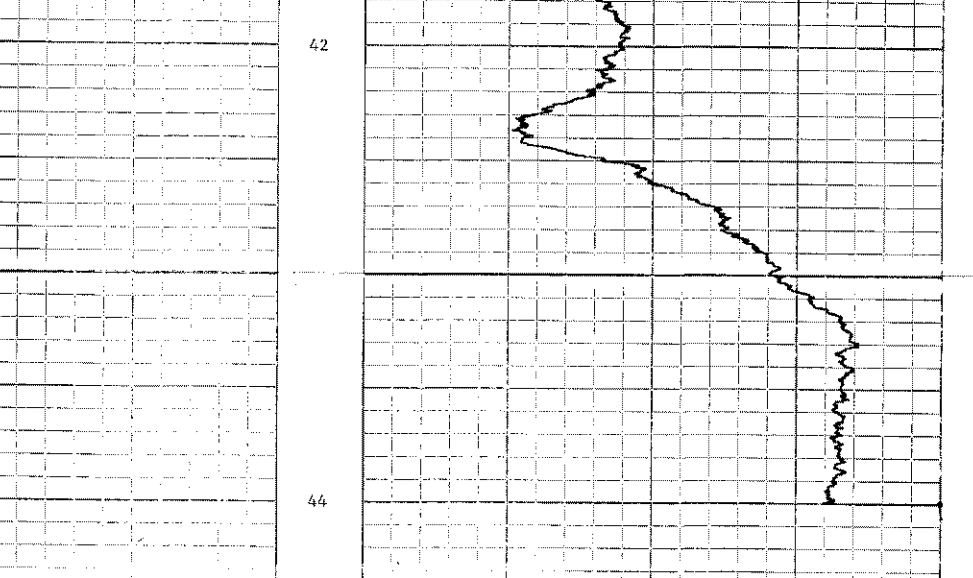
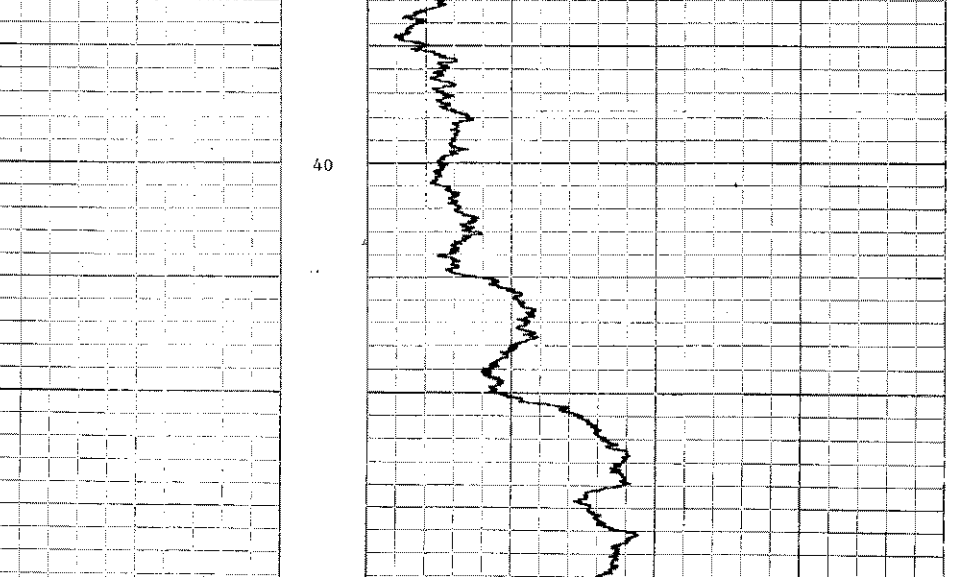
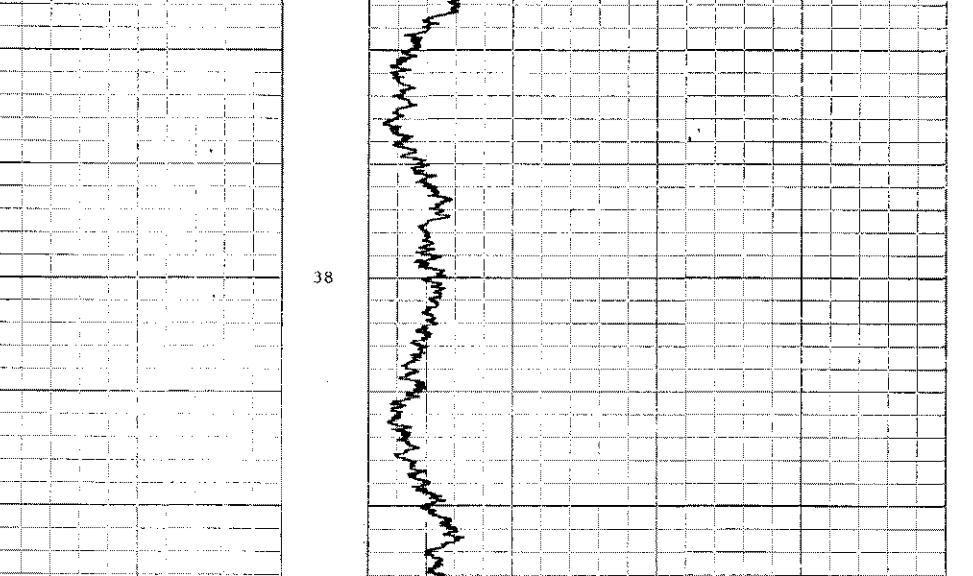
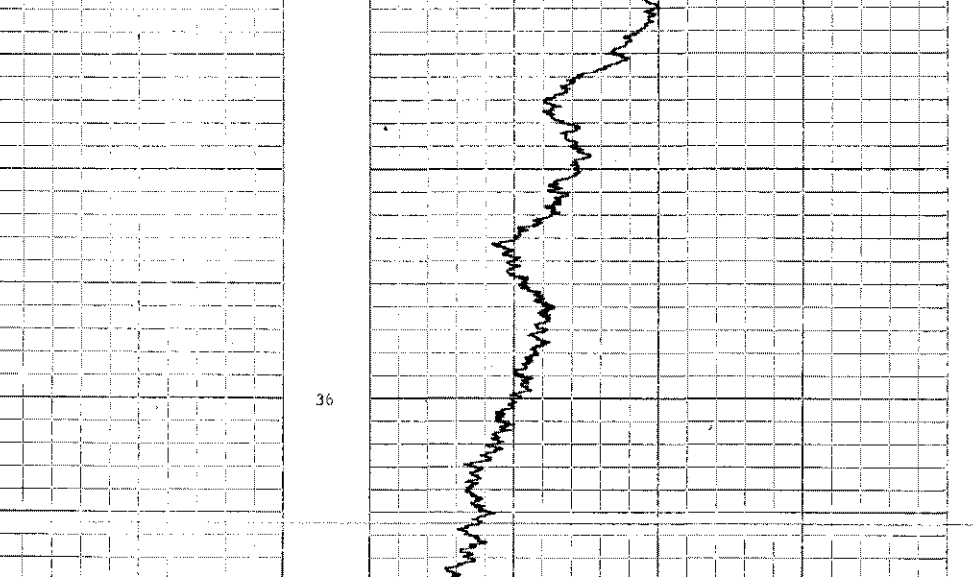
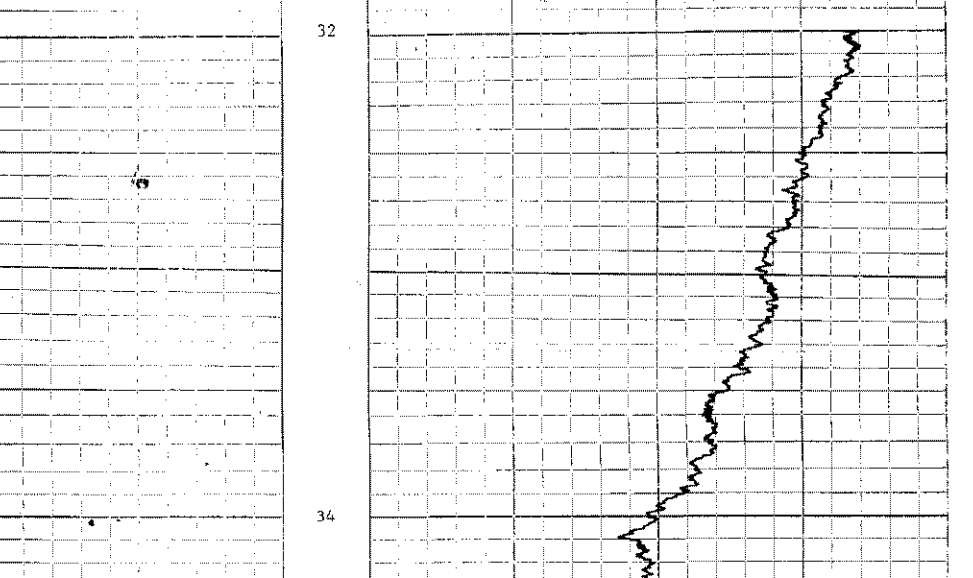
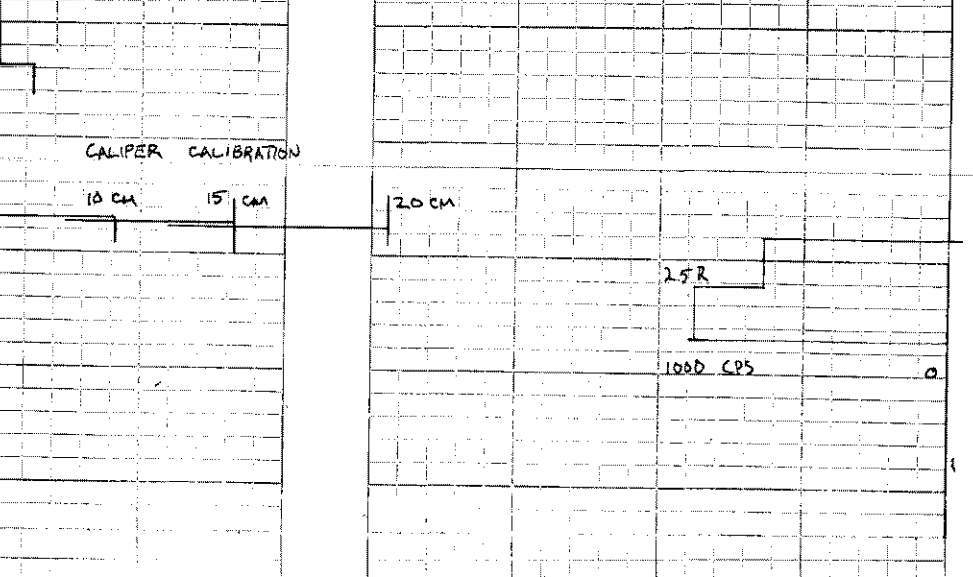
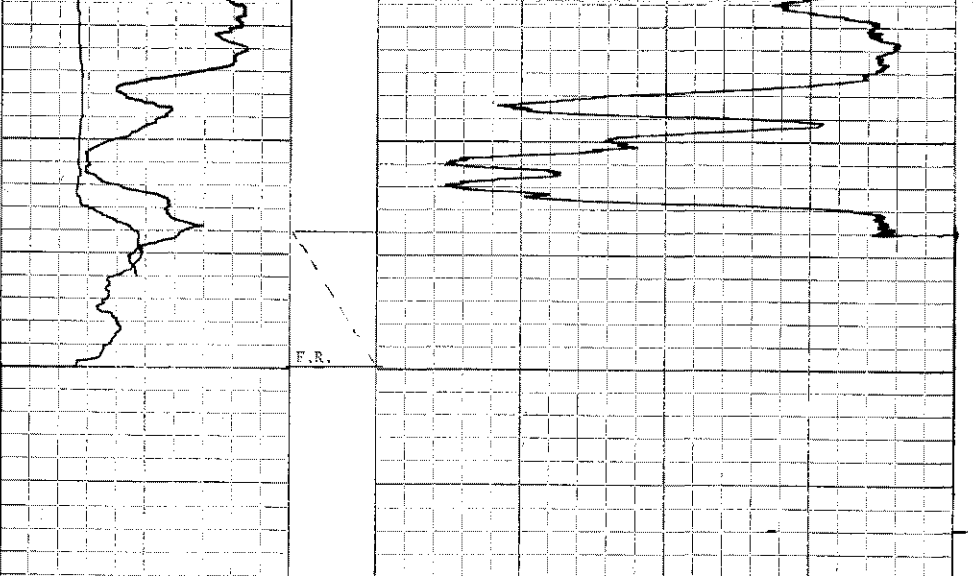
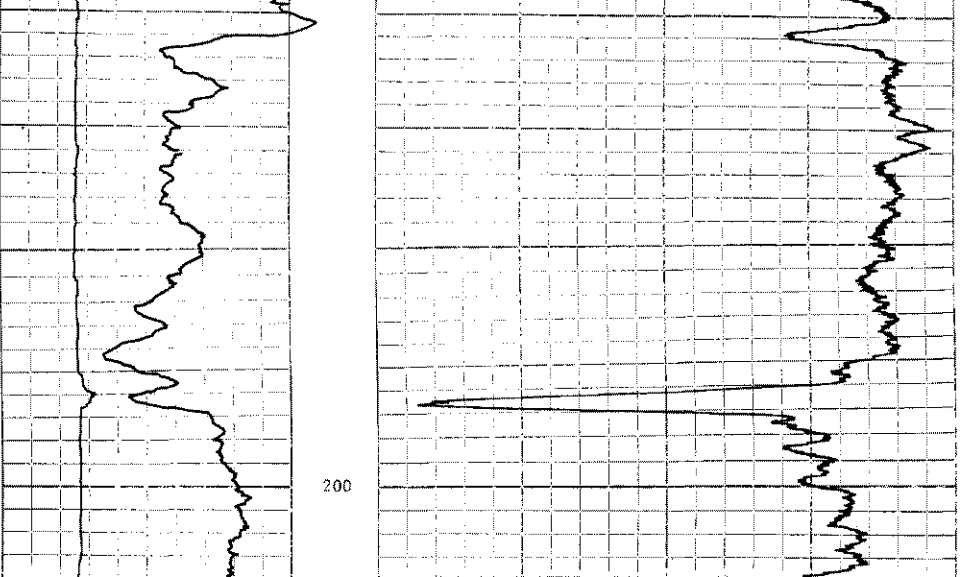
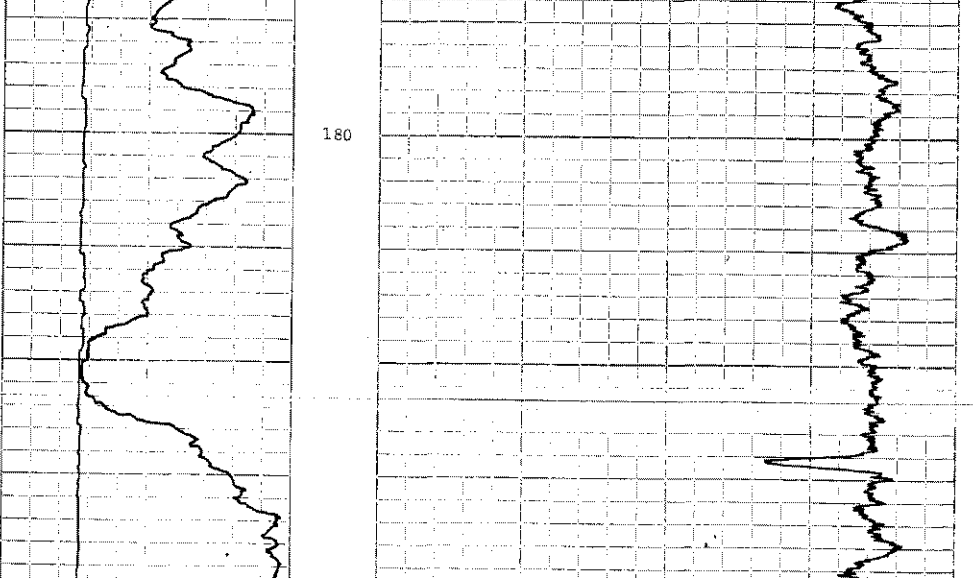
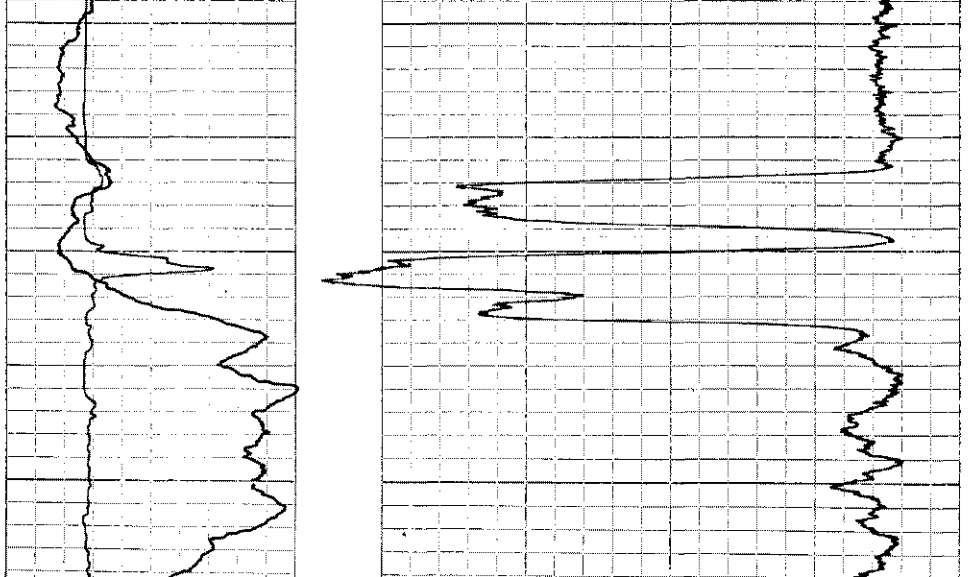
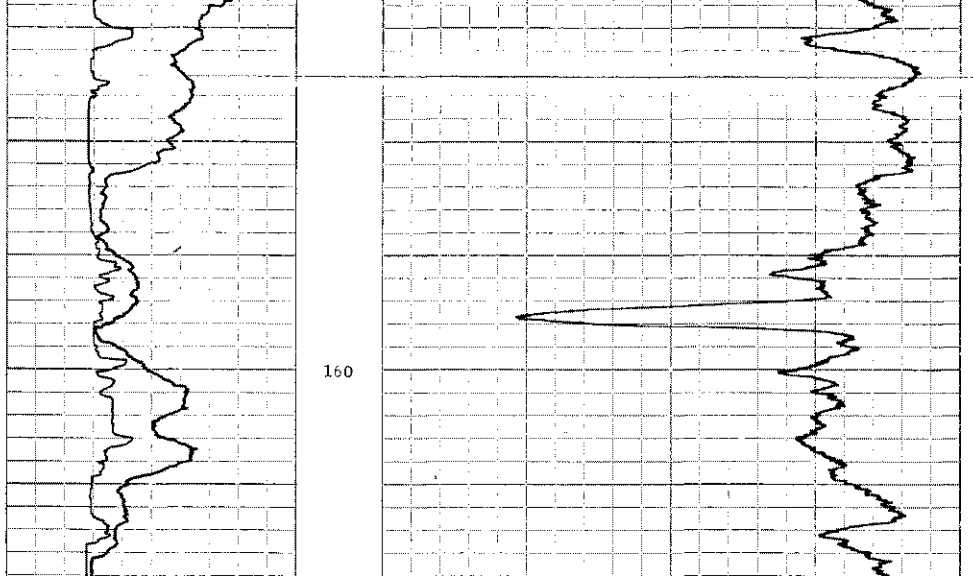
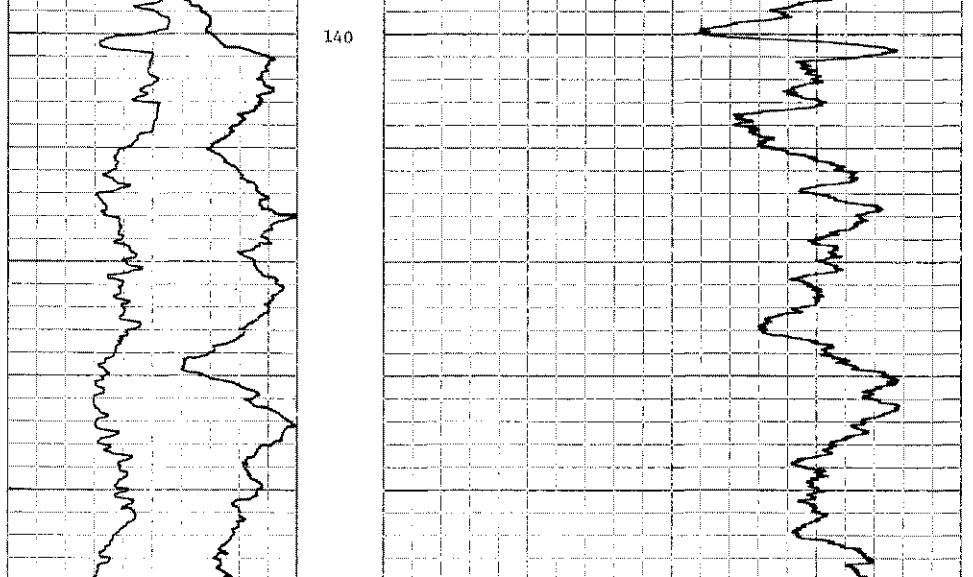
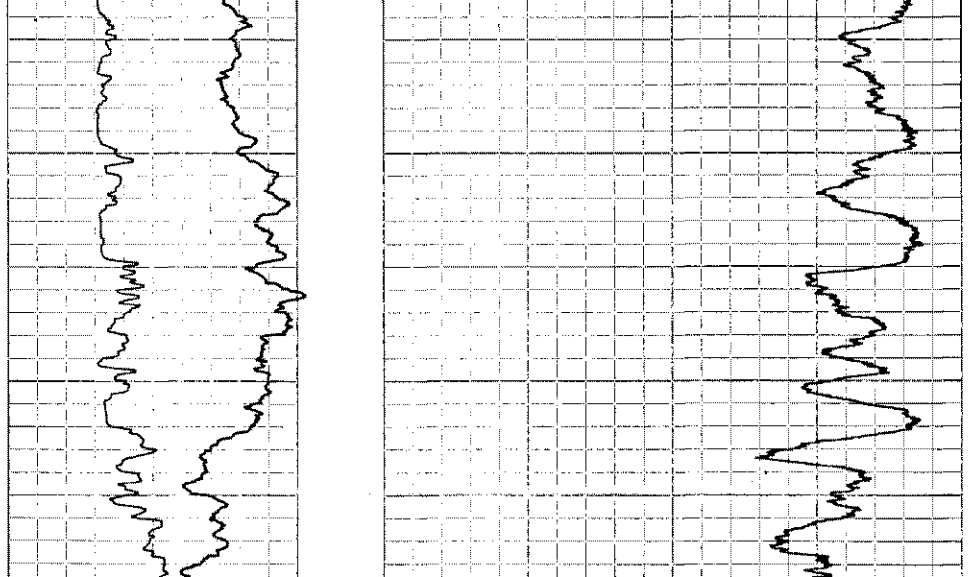
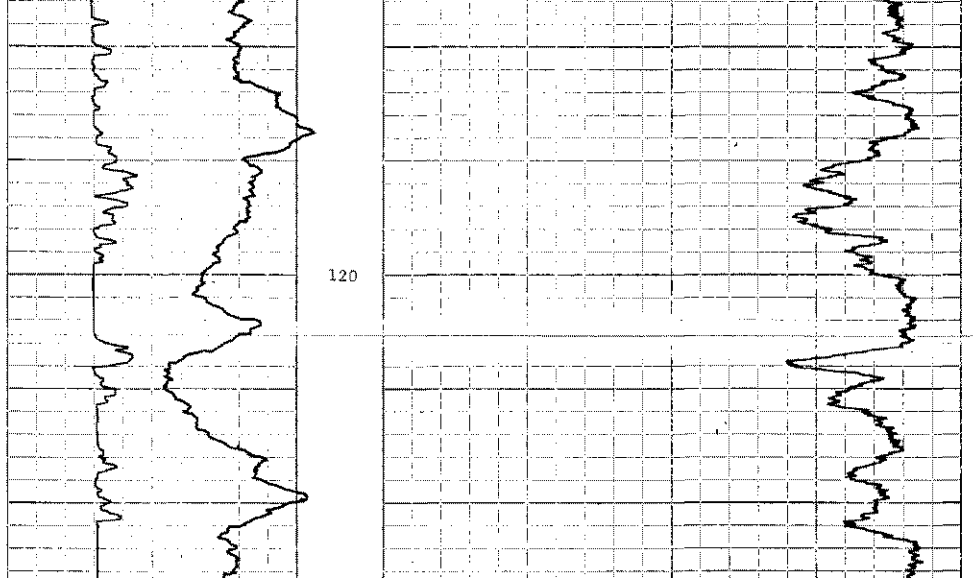
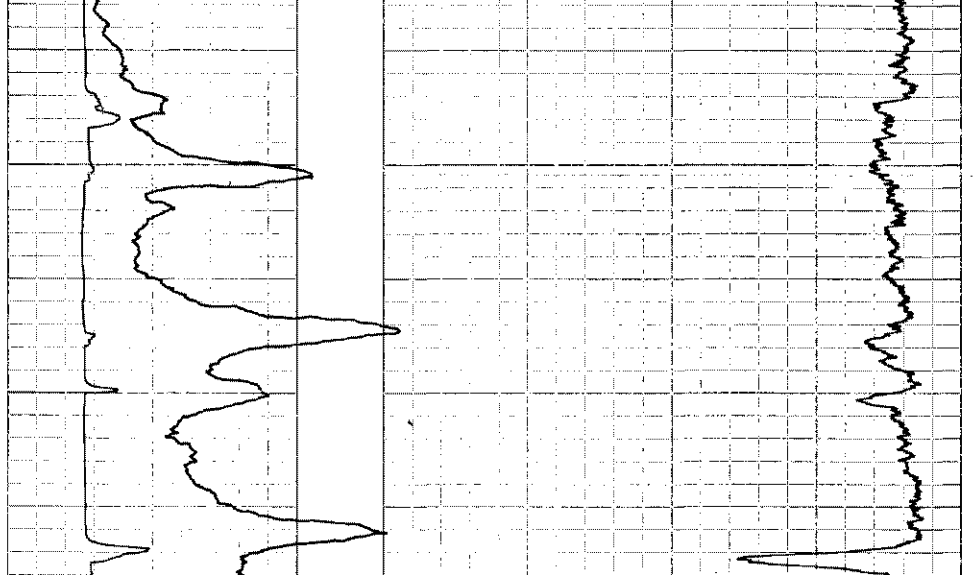
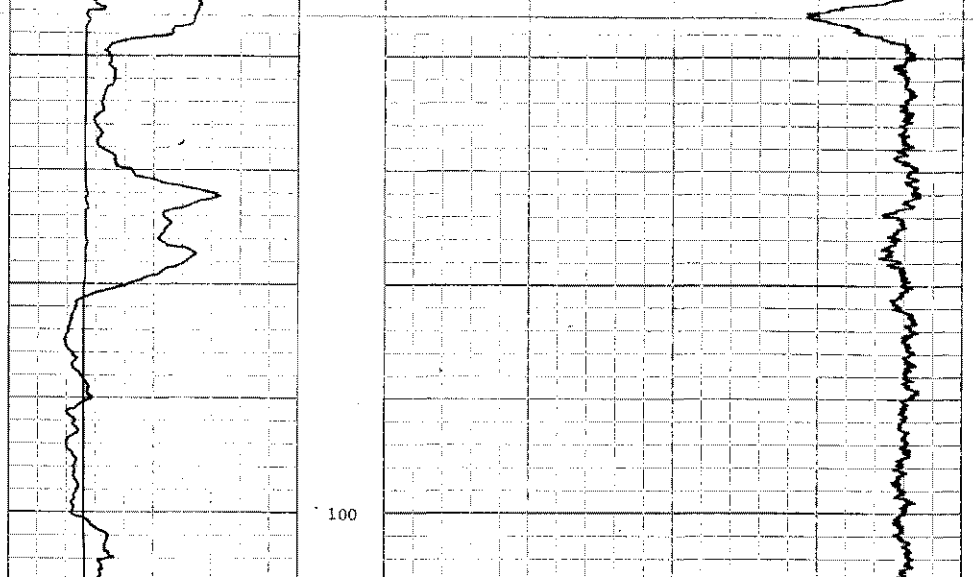
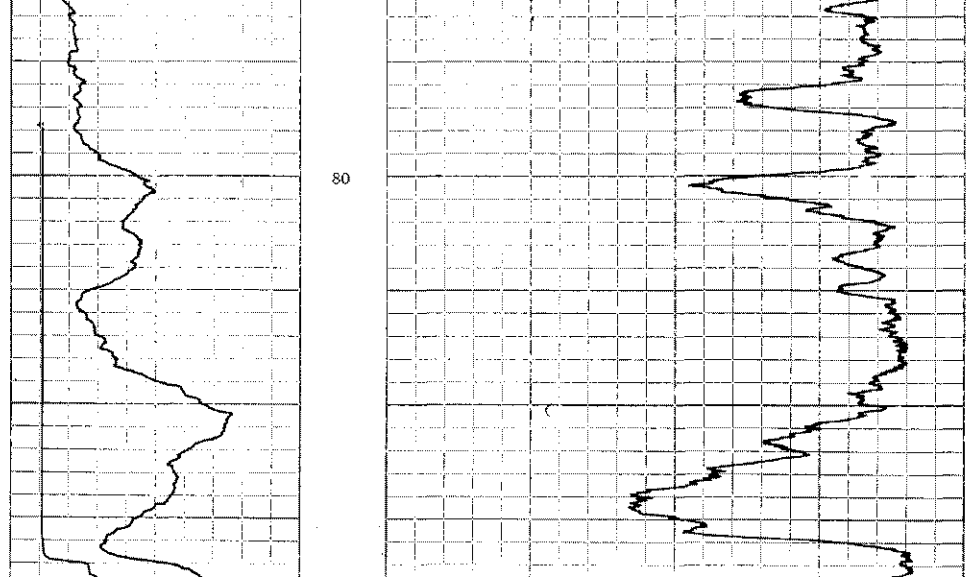
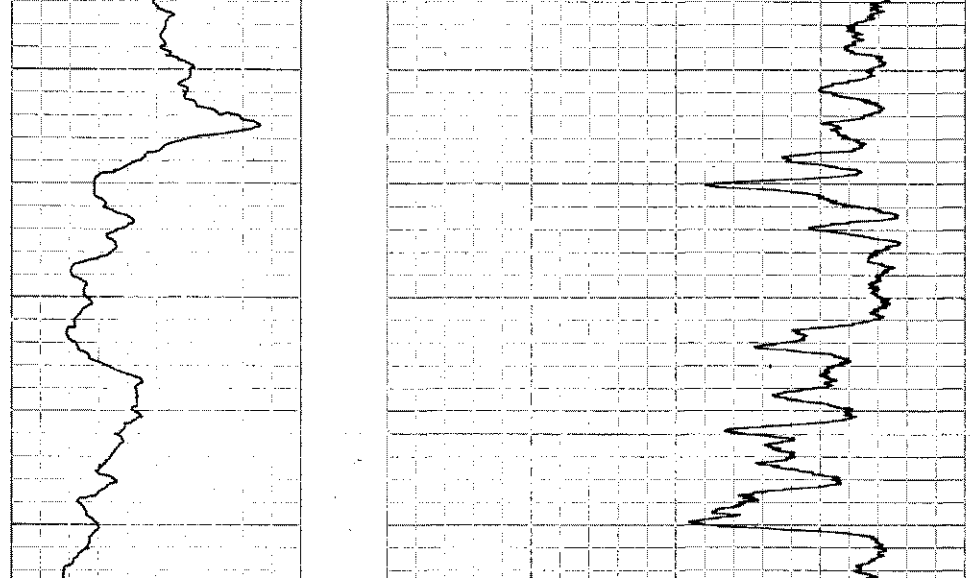
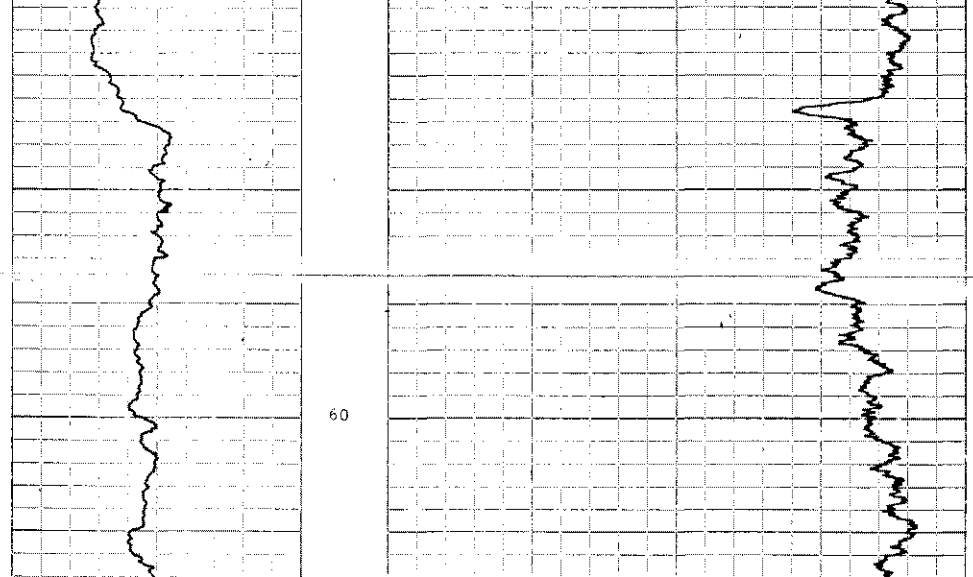
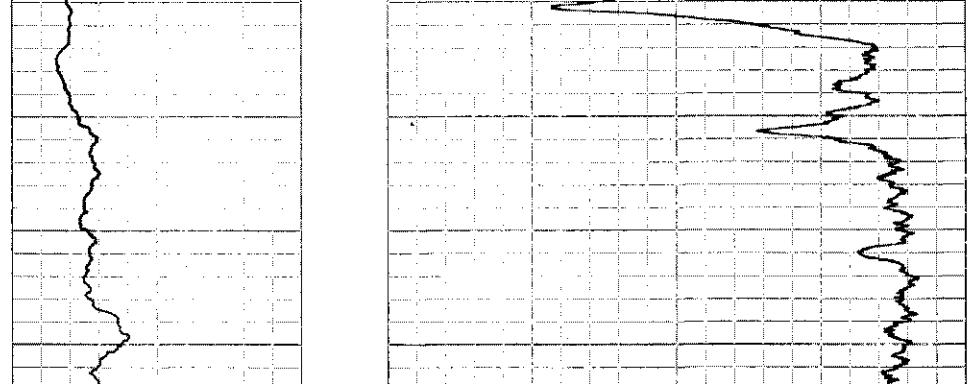
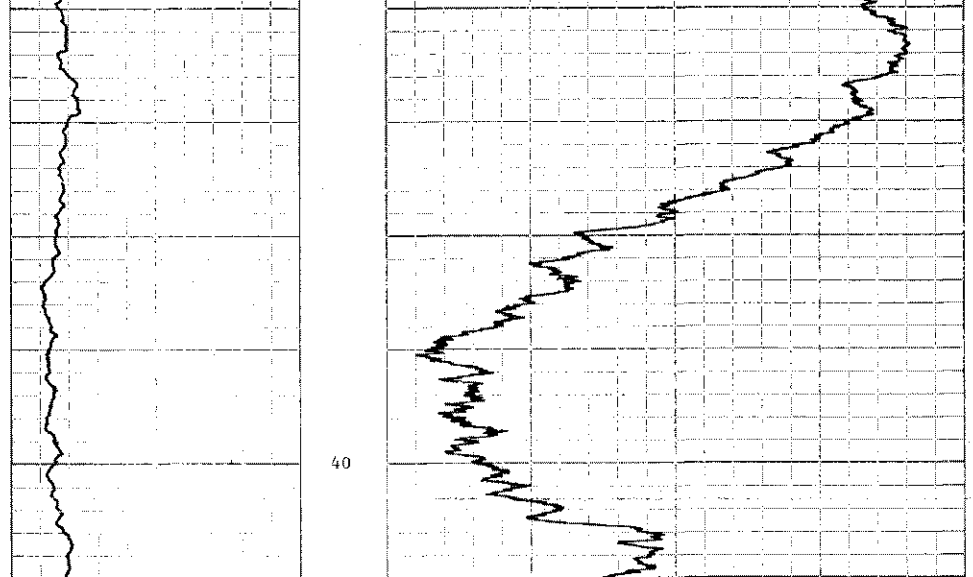
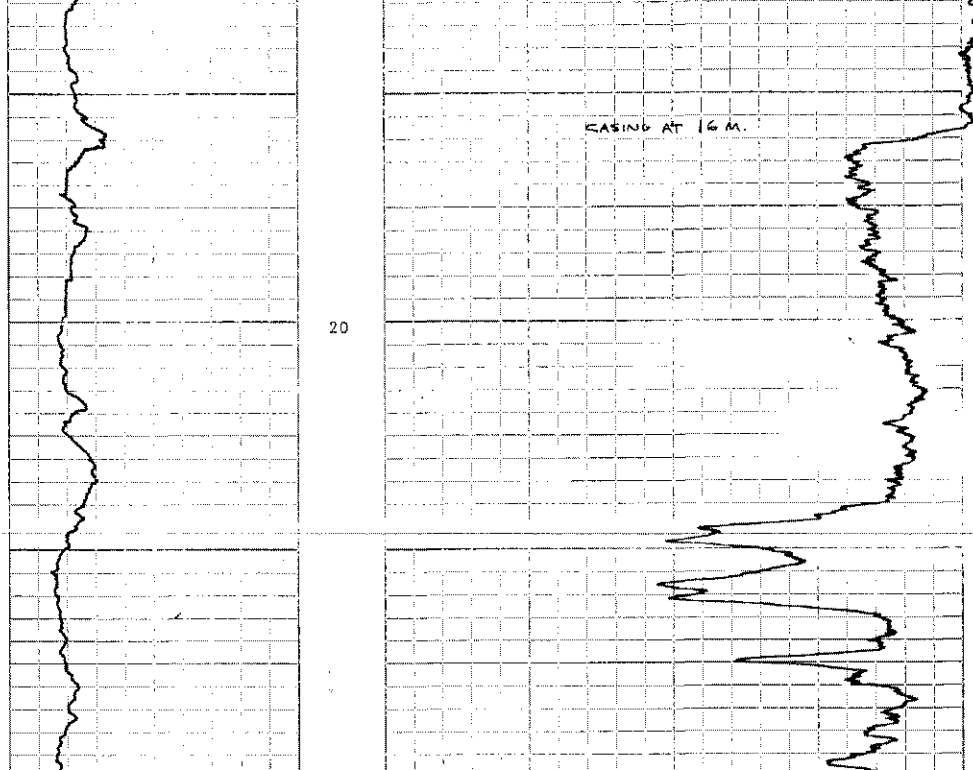
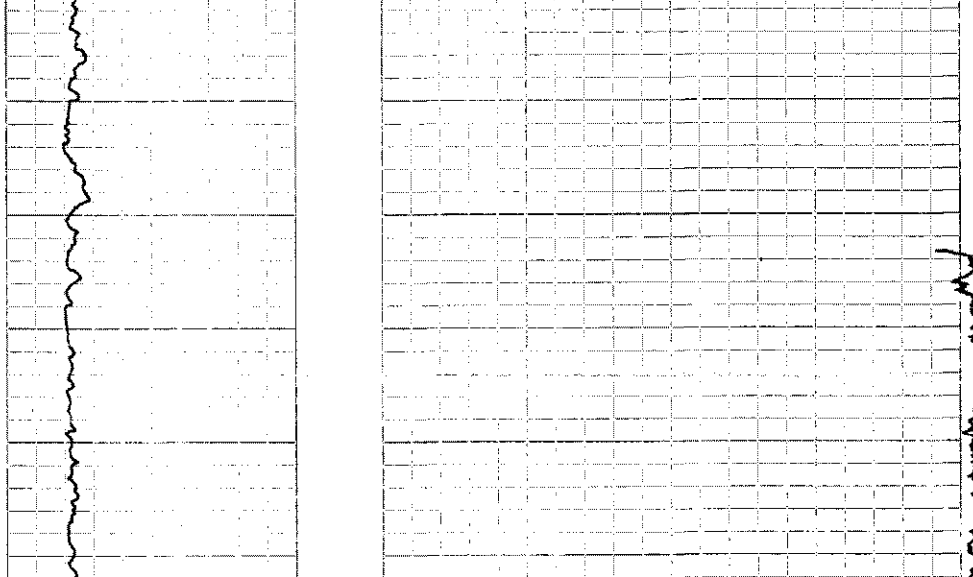
FILE NO. _____ COMPANY _____
 WELLSITE NO. _____
 FIELD _____ LOCATION _____
 OPERATOR _____
 PROJECT _____
 LOGGING COMPANY _____
 LOGGING DATE _____
 LOGGING TIME _____
 LOGGING LOCATION _____

LOG NO. _____ DATE _____
 LOGGERS _____
 SUPERVISOR _____
 TIME _____
 DEPTH _____

GENERAL INFORMATION
 RUN NO. _____ FROM _____ TO _____
 SPEED _____
 TIME _____
 LOG NO. _____

GENERAL	GAMMA RAY	SIDWALL DENSITY
RUN NO. 1	SENS. DIV. 0	T.C. SEC. 0.5
FROM 15	SENS. DIV. 0	SK. 5K
TO 207	AP.O.A. UNITS PER LOG DIV. 15	SK. 2.5R
SPEED 4		SK. 2.5R
TIME 208		SK. 2.5R
LOG NO. 108-3		SK. 2.5R
		SK. 2.5R
		SK. 2.5R
		SK. 2.5R

REMARKS: DENSITY TOOL 21.25%
 LOGGING THROUGH TO BRILL. ROD
 CALIPER AND GAMMA RAY LOGGED WITH TO BRILL. ROD TO 88.5 M



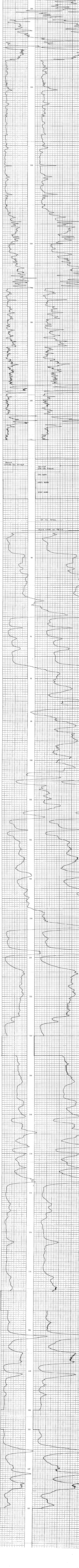
File No, Well, Location, Date, etc.

Resistivity, Mud, Temperature, etc.

Log Name, Log No., etc.

Scale and Range information

Remarks and Log No. (407)



Bottom section of the log with additional remarks and data points.