

00412

K-SHELL LINE CREEK

HORSESHOE RIDGE

72(2)A



LEGEND

| | |
|--------------|-------|
| Water | Blue |
| Highway | Black |
| Other roads | Grey |
| Contours | Brown |
| Spot heights | Black |
| Boundaries | Black |
| Vegetation | Green |
| Buildings | Black |
| Other | Black |

PREPARED FOR
CROWS NEST INDUSTRIES LIMITED
 TOPOGRAPHIC MAP OF
 LINE CREEK AREA
 BRITISH COLUMBIA
 SCALE 1:50,000

LH 72(2)A
 72-2

SHEET INDEX

| | | | | | | | | | |
|-------|-------|-------|-------|-------|-------|-------|-------|-------|-------|
| 72-1 | 72-2 | 72-3 | 72-4 | 72-5 | 72-6 | 72-7 | 72-8 | 72-9 | 72-10 |
| 72-11 | 72-12 | 72-13 | 72-14 | 72-15 | 72-16 | 72-17 | 72-18 | 72-19 | 72-20 |

LEGEND

| | |
|--------------|-------|
| Water | Blue |
| Highway | Black |
| Other roads | Grey |
| Contours | Brown |
| Spot heights | Black |
| Boundaries | Black |
| Vegetation | Green |
| Buildings | Black |
| Other | Black |

PREPARED FOR
CROWS NEST INDUSTRIES LIMITED
 TOPOGRAPHIC MAP OF
 LINE CREEK AREA
 BRITISH COLUMBIA
 SCALE 1:50,000

412
 LH 72(2)A
 72-1

SHEET INDEX

| | | | | | | | | | |
|-------|-------|-------|-------|-------|-------|-------|-------|-------|-------|
| 72-1 | 72-2 | 72-3 | 72-4 | 72-5 | 72-6 | 72-7 | 72-8 | 72-9 | 72-10 |
| 72-11 | 72-12 | 72-13 | 72-14 | 72-15 | 72-16 | 72-17 | 72-18 | 72-19 | 72-20 |



LEGEND

| | |
|------------------|-------|
| Contour Interval | 10' |
| Spot Height | 5' |
| Spot Height | 10' |
| Spot Height | 20' |
| Spot Height | 30' |
| Spot Height | 40' |
| Spot Height | 50' |
| Spot Height | 60' |
| Spot Height | 70' |
| Spot Height | 80' |
| Spot Height | 90' |
| Spot Height | 100' |
| Spot Height | 120' |
| Spot Height | 140' |
| Spot Height | 160' |
| Spot Height | 180' |
| Spot Height | 200' |
| Spot Height | 220' |
| Spot Height | 240' |
| Spot Height | 260' |
| Spot Height | 280' |
| Spot Height | 300' |
| Spot Height | 320' |
| Spot Height | 340' |
| Spot Height | 360' |
| Spot Height | 380' |
| Spot Height | 400' |
| Spot Height | 420' |
| Spot Height | 440' |
| Spot Height | 460' |
| Spot Height | 480' |
| Spot Height | 500' |
| Spot Height | 520' |
| Spot Height | 540' |
| Spot Height | 560' |
| Spot Height | 580' |
| Spot Height | 600' |
| Spot Height | 620' |
| Spot Height | 640' |
| Spot Height | 660' |
| Spot Height | 680' |
| Spot Height | 700' |
| Spot Height | 720' |
| Spot Height | 740' |
| Spot Height | 760' |
| Spot Height | 780' |
| Spot Height | 800' |
| Spot Height | 820' |
| Spot Height | 840' |
| Spot Height | 860' |
| Spot Height | 880' |
| Spot Height | 900' |
| Spot Height | 920' |
| Spot Height | 940' |
| Spot Height | 960' |
| Spot Height | 980' |
| Spot Height | 1000' |

PREPARED FOR
CROWS NEST INDUSTRIES LIMITED
TOPOGRAPHIC MAP OF
LINE CREEK AREA
BRITISH COLUMBIA
SCALE 1" = 1000'

K-SHEIK-LINE CREEK
HORSE SHOE RIDGE 72(2)A
72-2
412

SHEET INDEX

| | | | | |
|----|----|----|----|----|
| 1 | 2 | 3 | 4 | 5 |
| 6 | 7 | 8 | 9 | 10 |
| 11 | 12 | 13 | 14 | 15 |
| 16 | 17 | 18 | 19 | 20 |
| 21 | 22 | 23 | 24 | 25 |
| 26 | 27 | 28 | 29 | 30 |
| 31 | 32 | 33 | 34 | 35 |
| 36 | 37 | 38 | 39 | 40 |
| 41 | 42 | 43 | 44 | 45 |
| 46 | 47 | 48 | 49 | 50 |

Field Notebook letter 1/1/72

13840

13839

13838

13837

LEGEND

- PHOSPHATE LICENCE 13837
- GEOLOGICAL BOUNDARY
- DEFINED
- APPROXIMATE
- ASSUMED
- FAULT LOCATION
- DEFINED
- APPROXIMATE
- ASSUMED
- APPROXIMATE TOE OF DUMP

KEY

- PLEISTOCENE & RECENT
- KOOTENAY FM
- PERNIE FM
- SPRAY RIVER FM
- PALAEZOIC FMS.

PREPARED FOR
CROWS NEST INDUSTRIES LIMITED
 TOPOGRAPHIC MAP OF
 LINE CREEK AREA
 BRITISH COLUMBIA

412

SHEET INDEX

| | | | |
|-------|-------|-------|-------|
| 13837 | 13838 | 13839 | 13840 |
| 13841 | 13842 | 13843 | 13844 |
| 13845 | 13846 | 13847 | 13848 |
| 13849 | 13850 | 13851 | 13852 |
| 13853 | 13854 | 13855 | 13856 |
| 13857 | 13858 | 13859 | 13860 |
| 13861 | 13862 | 13863 | 13864 |
| 13865 | 13866 | 13867 | 13868 |
| 13869 | 13870 | 13871 | 13872 |
| 13873 | 13874 | 13875 | 13876 |
| 13877 | 13878 | 13879 | 13880 |
| 13881 | 13882 | 13883 | 13884 |
| 13885 | 13886 | 13887 | 13888 |
| 13889 | 13890 | 13891 | 13892 |
| 13893 | 13894 | 13895 | 13896 |
| 13897 | 13898 | 13899 | 13900 |

LEGEND

| | | | |
|-------|-------|-------|-------|
| 13837 | 13838 | 13839 | 13840 |
| 13841 | 13842 | 13843 | 13844 |
| 13845 | 13846 | 13847 | 13848 |
| 13849 | 13850 | 13851 | 13852 |
| 13853 | 13854 | 13855 | 13856 |
| 13857 | 13858 | 13859 | 13860 |
| 13861 | 13862 | 13863 | 13864 |
| 13865 | 13866 | 13867 | 13868 |
| 13869 | 13870 | 13871 | 13872 |
| 13873 | 13874 | 13875 | 13876 |
| 13877 | 13878 | 13879 | 13880 |
| 13881 | 13882 | 13883 | 13884 |
| 13885 | 13886 | 13887 | 13888 |
| 13889 | 13890 | 13891 | 13892 |
| 13893 | 13894 | 13895 | 13896 |
| 13897 | 13898 | 13899 | 13900 |

PREPARED FOR
CROWS NEST INDUSTRIES LIMITED
 TOPOGRAPHIC MAP OF
 LINE CREEK AREA
 BRITISH COLUMBIA

PLC

Line 2

SHEET INDEX

| | | | |
|-------|-------|-------|-------|
| 13837 | 13838 | 13839 | 13840 |
| 13841 | 13842 | 13843 | 13844 |
| 13845 | 13846 | 13847 | 13848 |
| 13849 | 13850 | 13851 | 13852 |
| 13853 | 13854 | 13855 | 13856 |
| 13857 | 13858 | 13859 | 13860 |
| 13861 | 13862 | 13863 | 13864 |
| 13865 | 13866 | 13867 | 13868 |
| 13869 | 13870 | 13871 | 13872 |
| 13873 | 13874 | 13875 | 13876 |
| 13877 | 13878 | 13879 | 13880 |
| 13881 | 13882 | 13883 | 13884 |
| 13885 | 13886 | 13887 | 13888 |
| 13889 | 13890 | 13891 | 13892 |
| 13893 | 13894 | 13895 | 13896 |
| 13897 | 13898 | 13899 | 13900 |

72-3

717

13840

13839

13838

13837

LEGEND

- PHOSPHATE LICENCE 13837
- GEOLOGICAL BOUNDARY
 - DEFINED
 - APPROXIMATE
- FALLT LOCATION
 - DEFINED
 - APPROXIMATE
 - ASSUMED

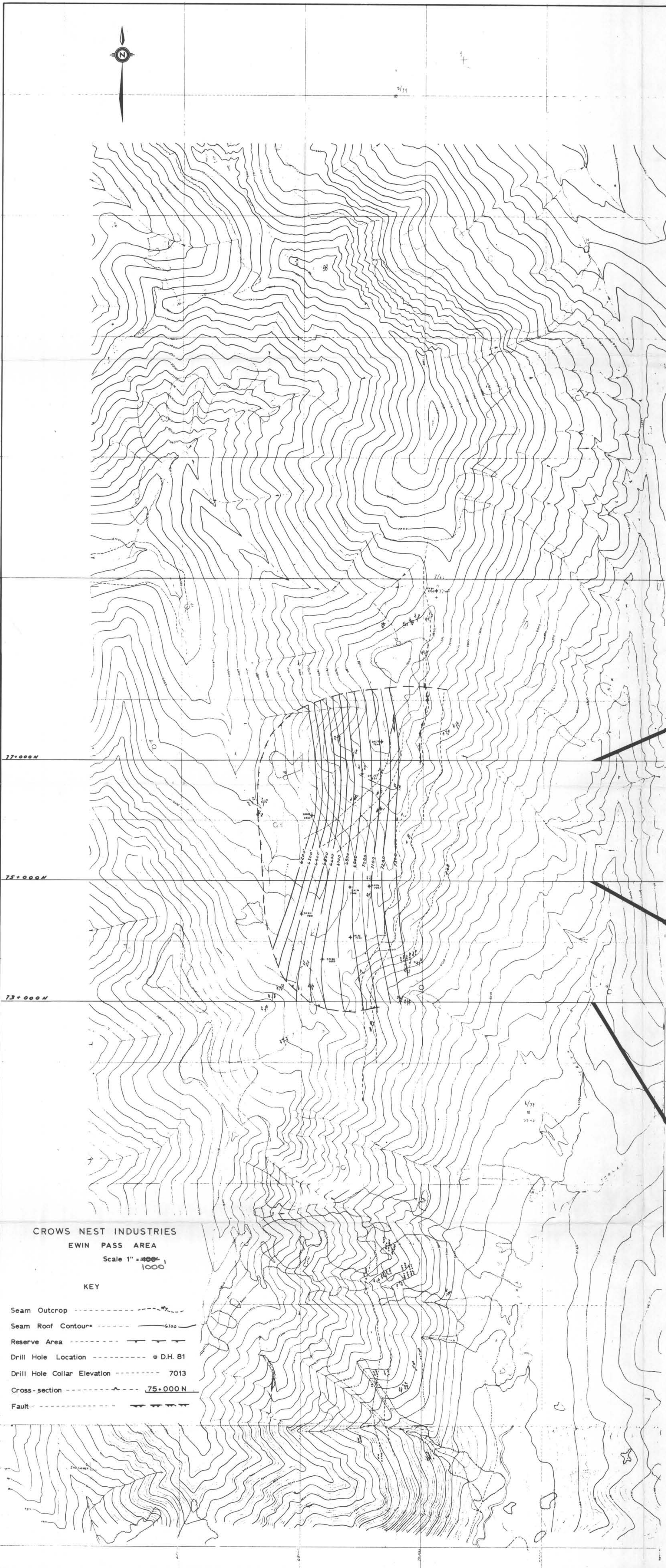
KEY

- PLEISTOCENE & RECENT
- KOOTENAY FM.
- FERNIE FM.
- SPRAY RIVER FM.
- PALAEZOIC FMS.

PREPARED FOR
CROWS NEST INDUSTRIES LIMITED
 TOPOGRAPHIC MAP OF
 LINE CREEK AREA
 BRITISH COLUMBIA

PREPARED FOR
CROWS NEST INDUSTRIES LIMITED
 TOPOGRAPHIC MAP OF
 LINE CREEK AREA
 BRITISH COLUMBIA

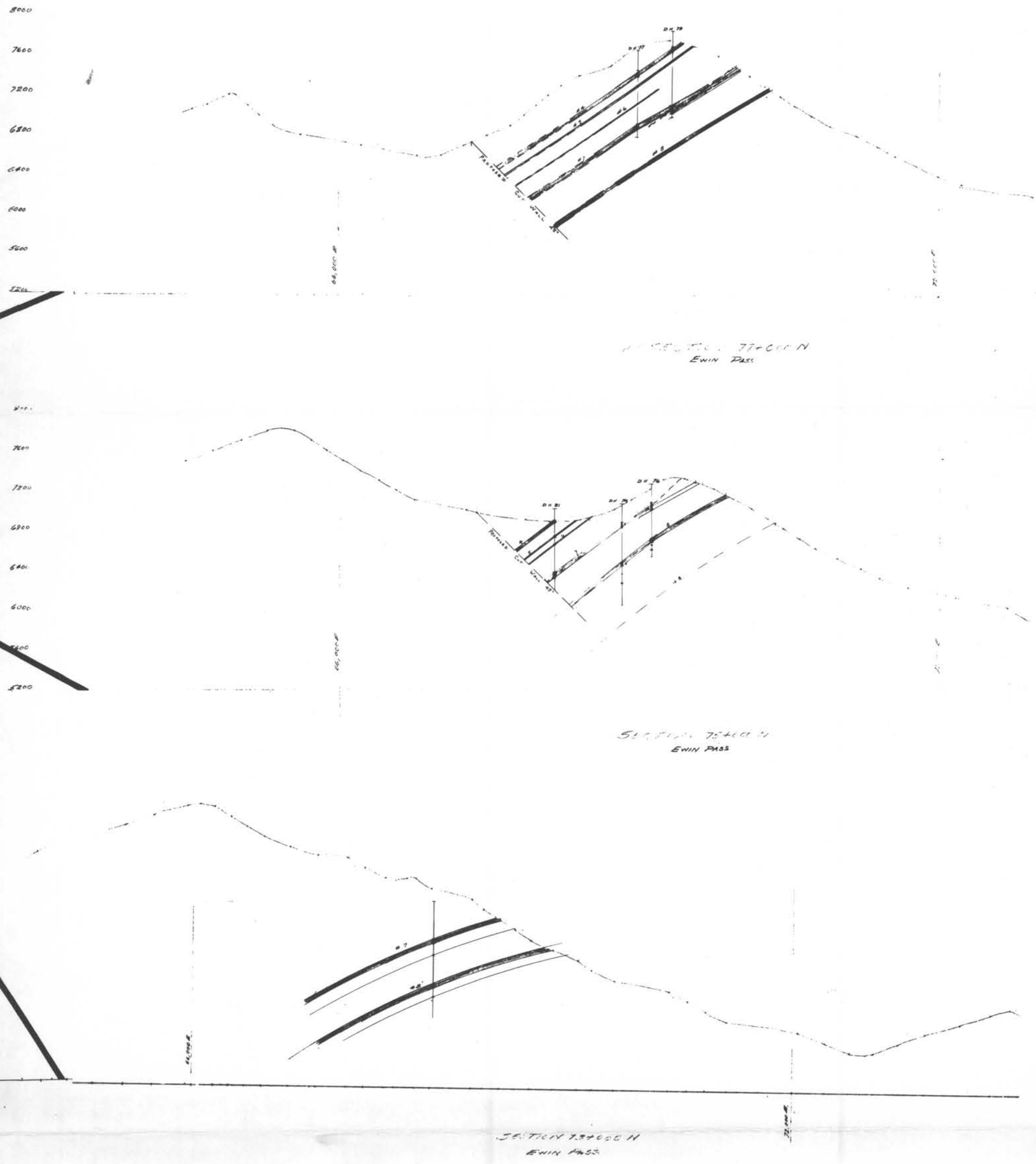
R/C



CROWS NEST INDUSTRIES
EWIN PASS AREA
Scale 1" = 400'
1000'

KEY

- Seam Outcrop
- Seam Roof Contour
- Reserve Area
- Drill Hole Location
- Drill Hole Collar Elevation
- Cross-section
- Fault

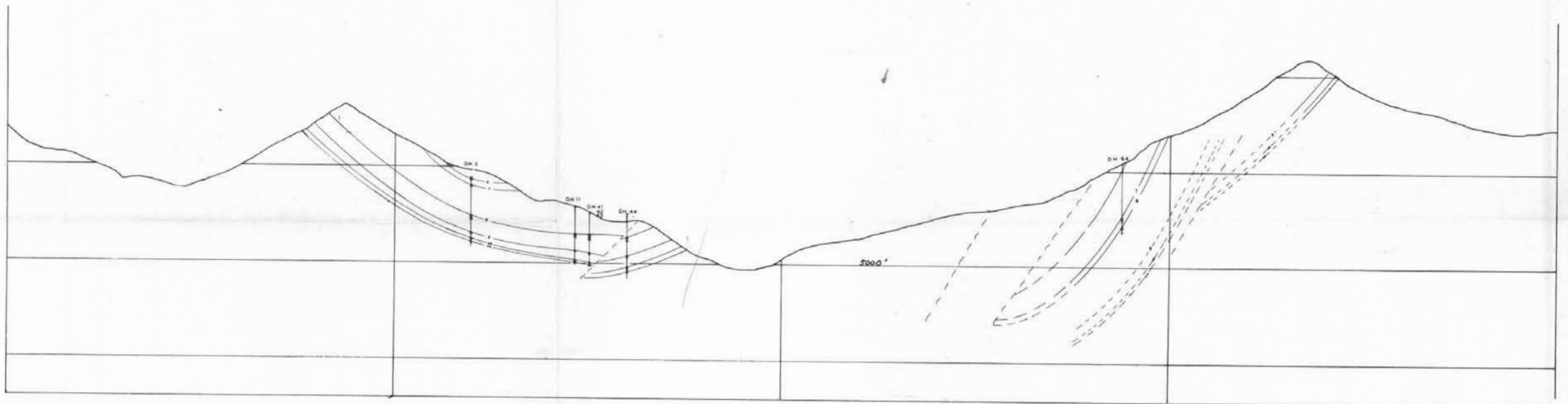


LH 72(2)A
72-5

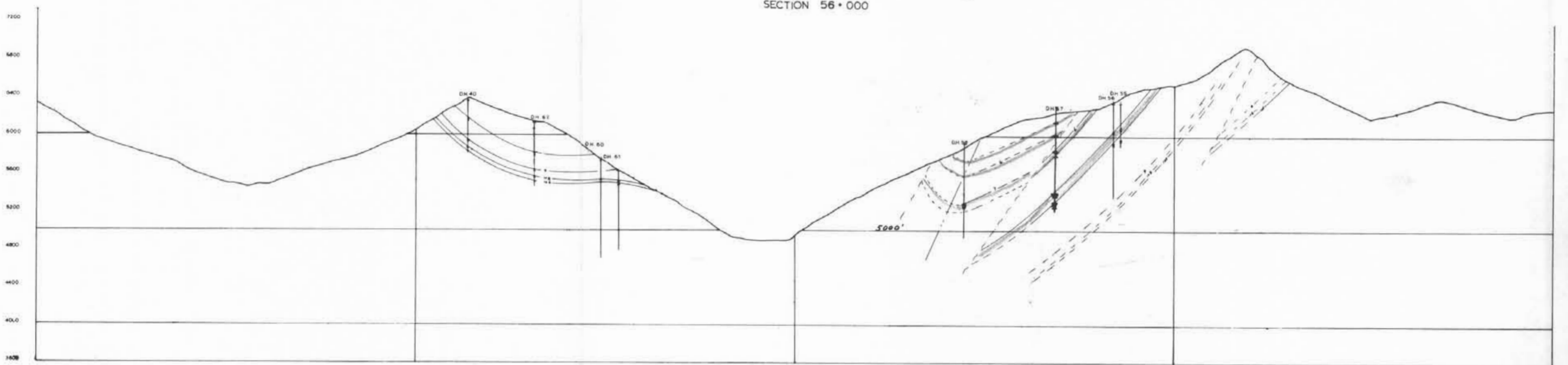
Rec'd from Glass - letter 1/11/72

R-SHELL LINE CREEK
HORSESHOE RIDGE 72(2)A.
72-5

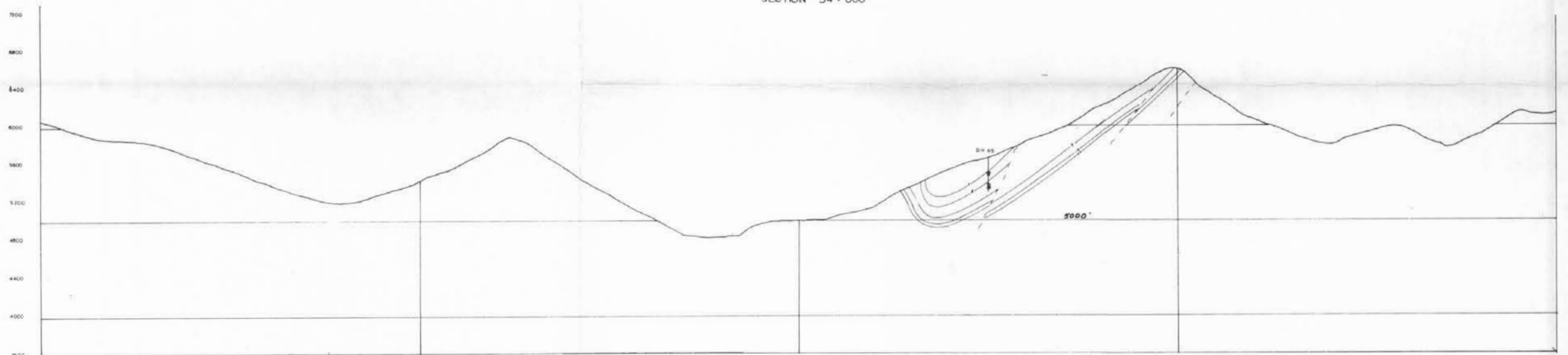
412



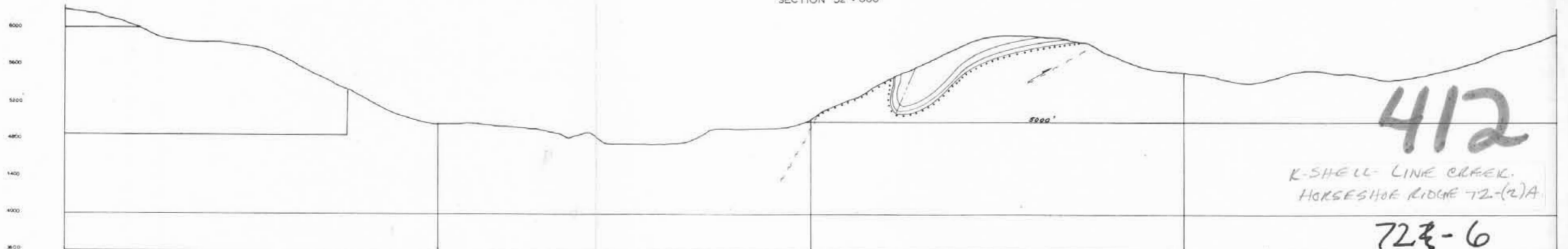
SECTION 56 + 000



SECTION 54 + 000



SECTION 52 + 000

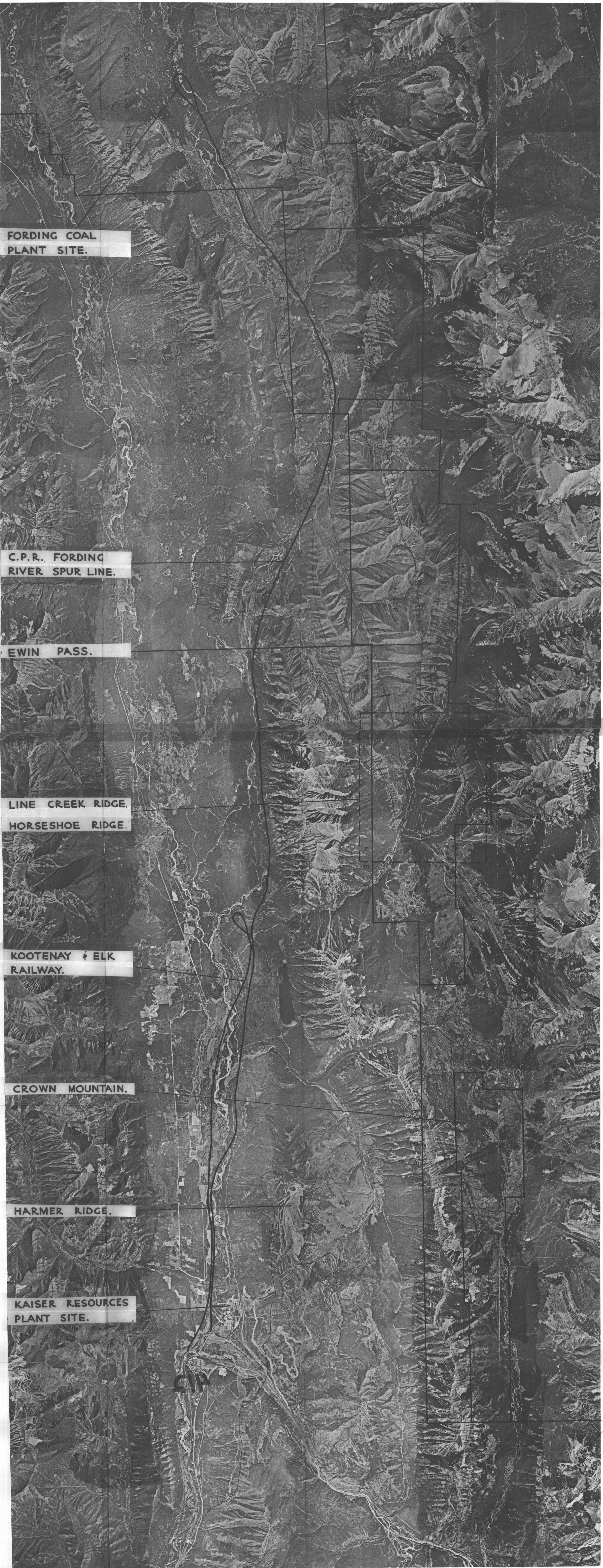


SECTION 50 + 000

412

K-SHELL LINE CREEK.
HORSESHOE RIDGE 72-(2)A

72-6



FORDING COAL LIMITED

FORDING COAL
PLANT SITE.

C.P.R. FORDING
RIVER SPUR LINE.

EWIN PASS.

LINE CREEK RIDGE.
HORSESHOE RIDGE.

KOOTENAY & ELK
RAILWAY.

CROWN MOUNTAIN.

HARMER RIDGE.

KAISER RESOURCES
PLANT SITE.

INDEX
1 2

CROWNSNEST INDUSTRIES LIMITED.
Scale 1" = 3,000'

INDEX
1 2
N

INDEX
1 2

CROWNSNEST INDUSTRIES LIMITED.
Scale 1" = 3,000'

INDEX
1 2
N

6100
5900
5700
5500
5300
5100
4900
4700
4500

62000 E

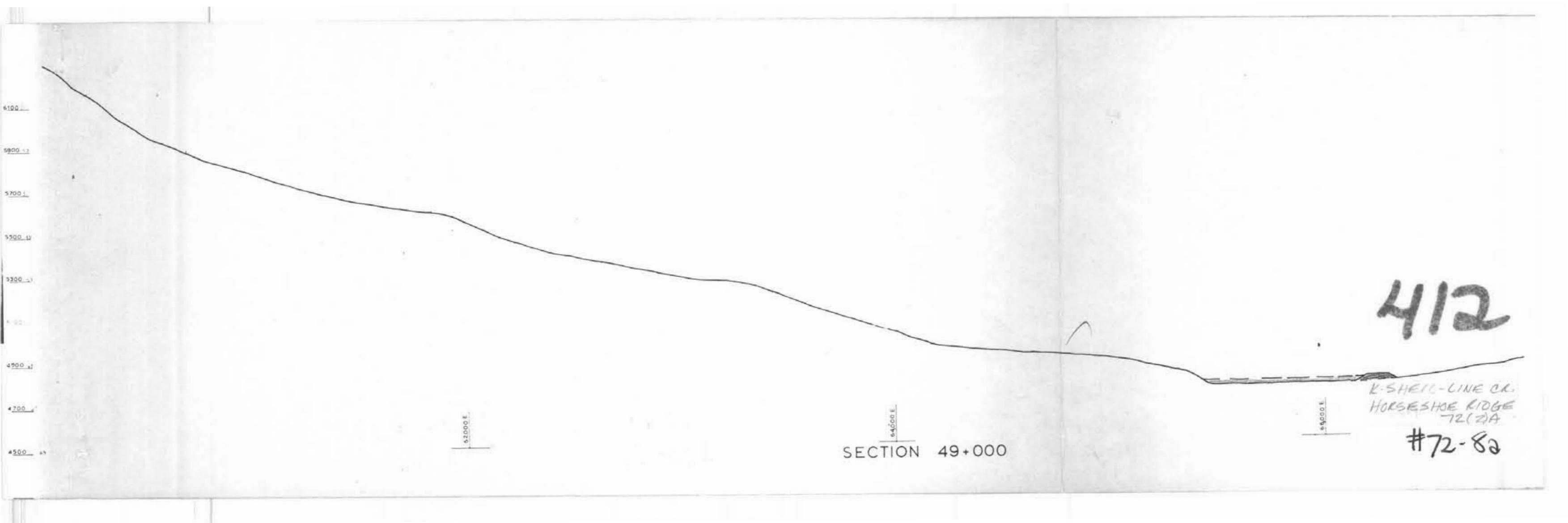
64000 E
SECTION 49+000

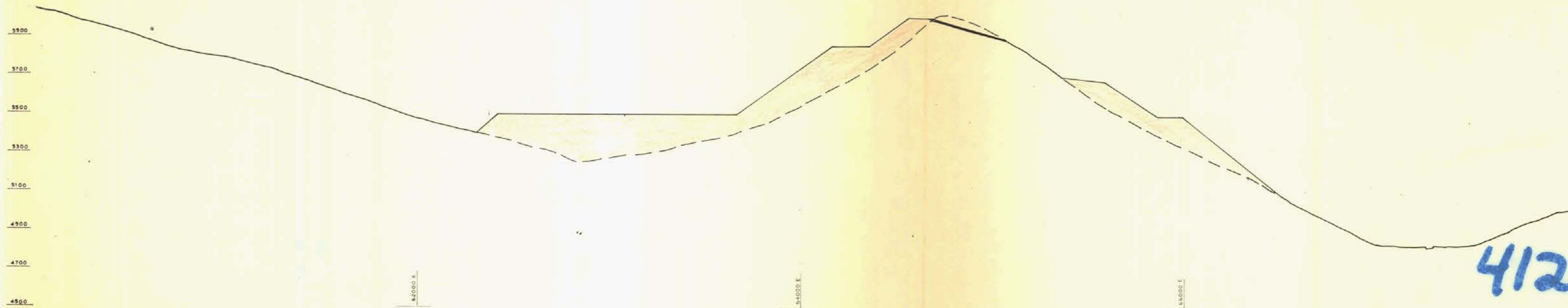
64000 E

412

K-SHEIL-LINE CR.
HORSESHOE RIDGE
72(2)A

#72-8a





SECTION 52+500

412

K-STEEL-LINE CREEK
HORSESHOE RIDGE
72(2)A
#72-85

5500
5400
5300
5200
5100
5000
4900
4800
4700
4600

62000 E

64000 E

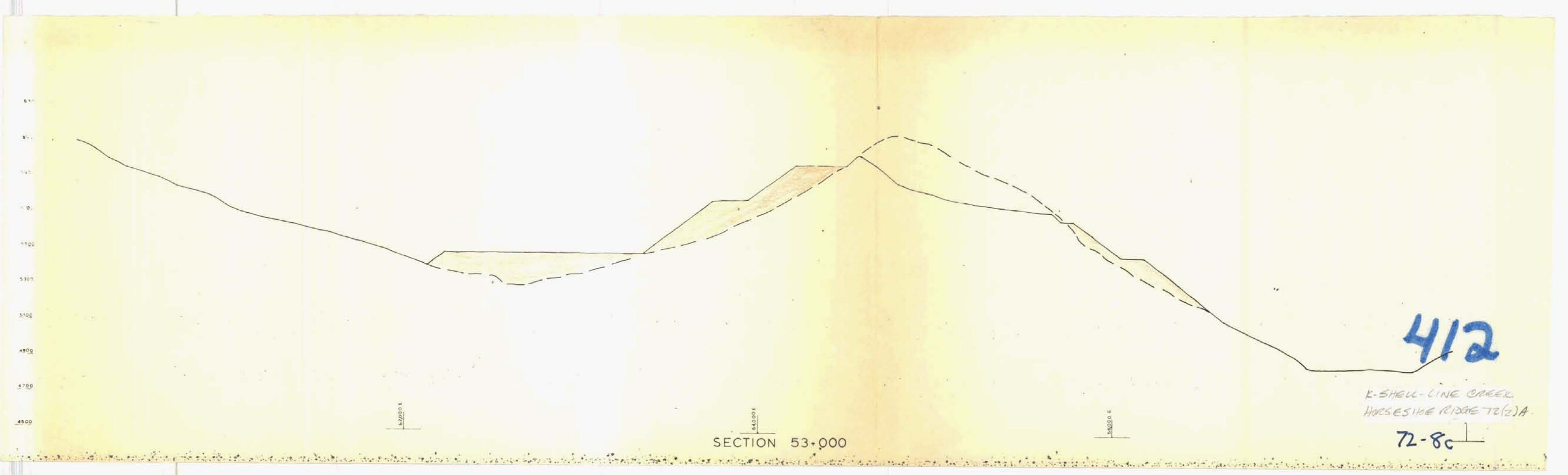
66000 E

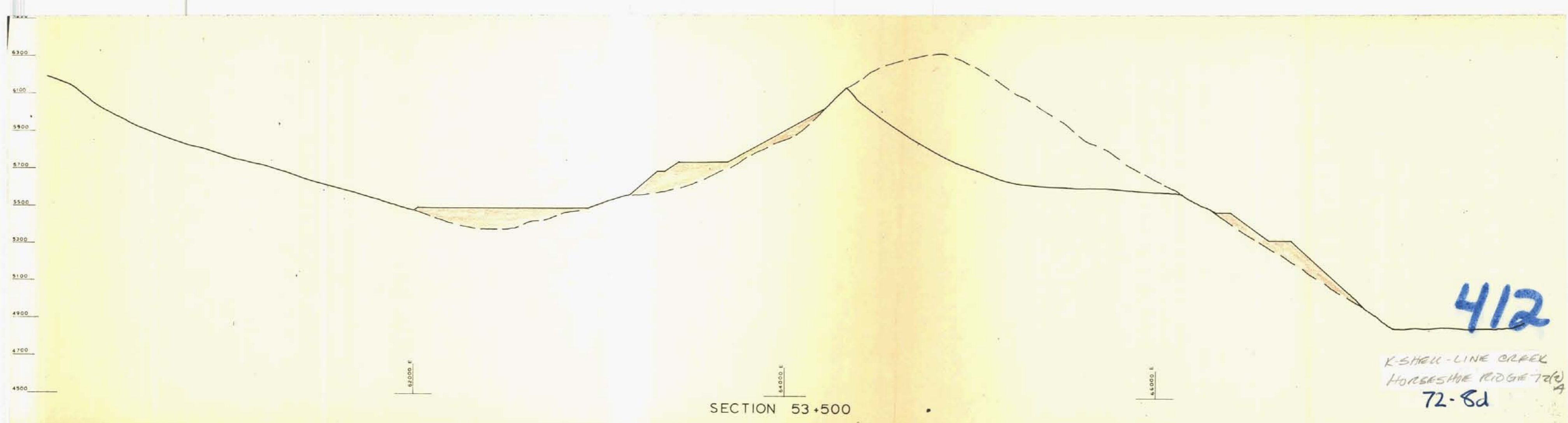
SECTION 53+000

412

K-SHELL-LINE CREEK
HORSESHOE RIDGE T2(2)A

72-80





412

SECTION 53+500

K-SHELL-LINE CREEK
HORSESHOE RIDGE 72(A)
72-8d

6700
6500
6300
6100
5900
5700
5500
5300
5100
4900
4700
4500

62000 E

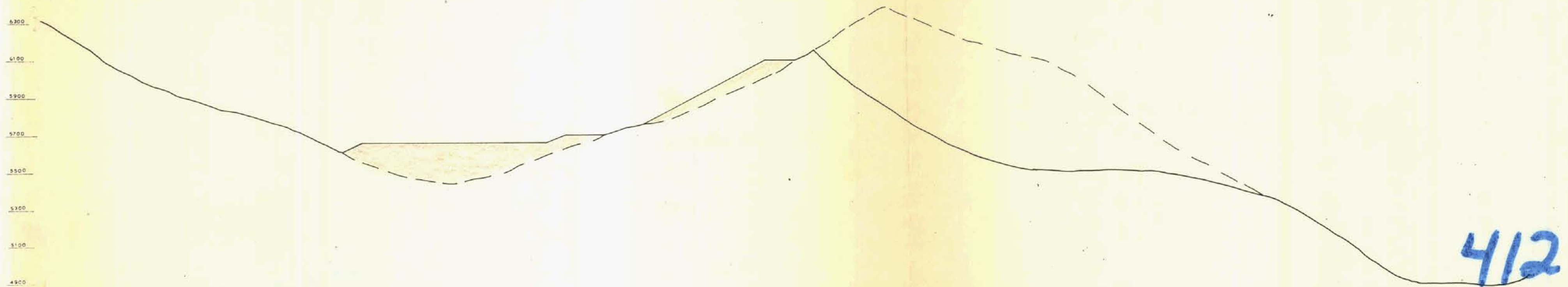
SECTION 54+000

66000 E

412

X-SHELL-LINE CRACK
HORSESHOE RIDGE 72 (2A)

72-8e





- breaker waste disposal area
- breaker station
- truck load-out & turn-around

section 54+000
 // 53+500
 // 53+000
 // 52+500

section 49+000

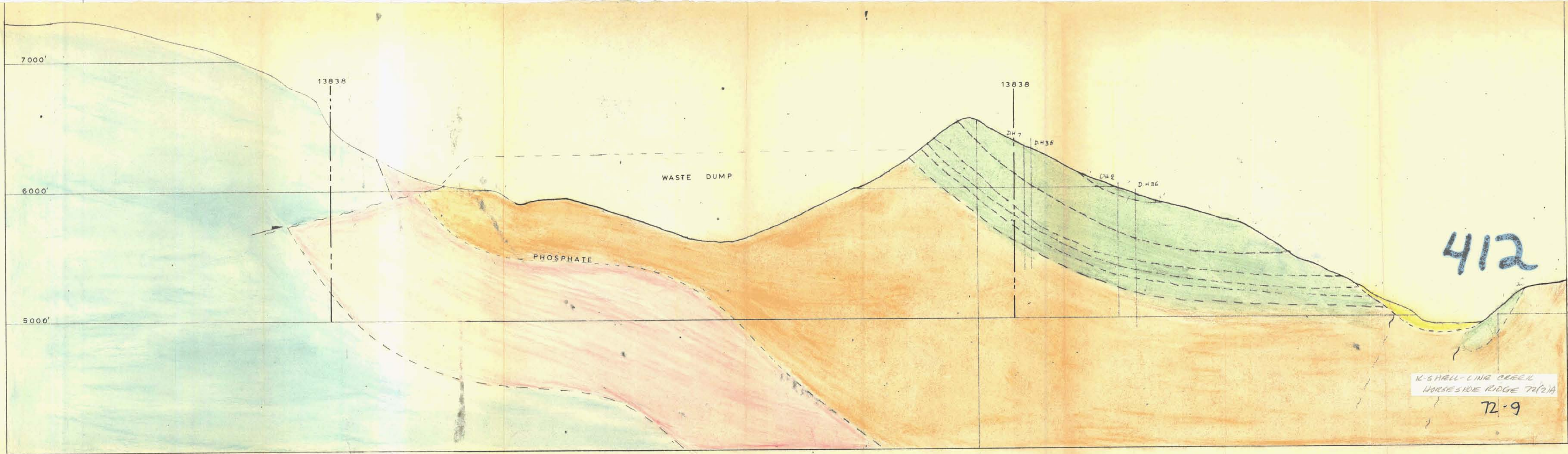
Topography
 At Completion Of
 Phase 1B Pit 1
 Scale 1"=100'
 CROWS NEST INDUSTRIES LIMITED
 TORONADO MIN PROJECT

LH 72(2)A
 72-18

412

72-8

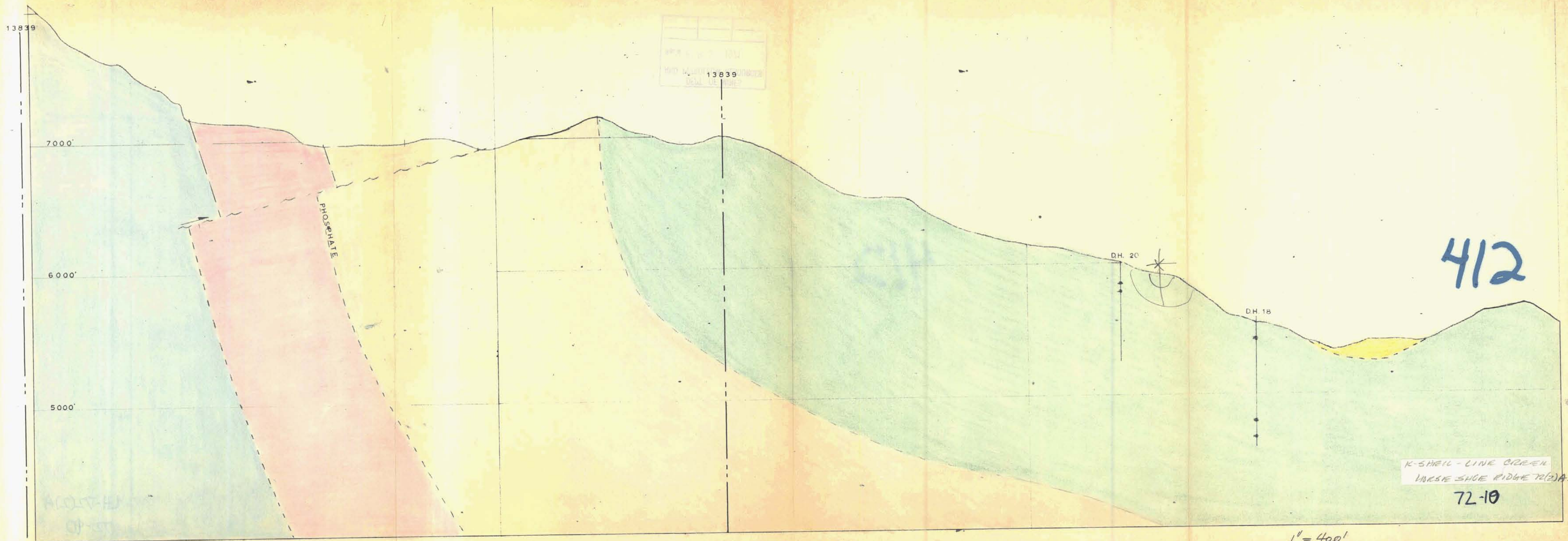
K-SHELL LING CREEK -
 HILLSIDE RIDGE 72(2)A



55+000 N

K-SHELL-LINE CREEK
HORSESHOE RIDGE T2(2)A
72-9

1" = 400'



13839

7000'

6000'

5000'

PHOSPHATE

DH. 20

DH. 18

412

K-SHELL - LINE GREEN
HORSE SHOE RIDGE 72(2)A

72-10

1" = 400'

61 + 000 N