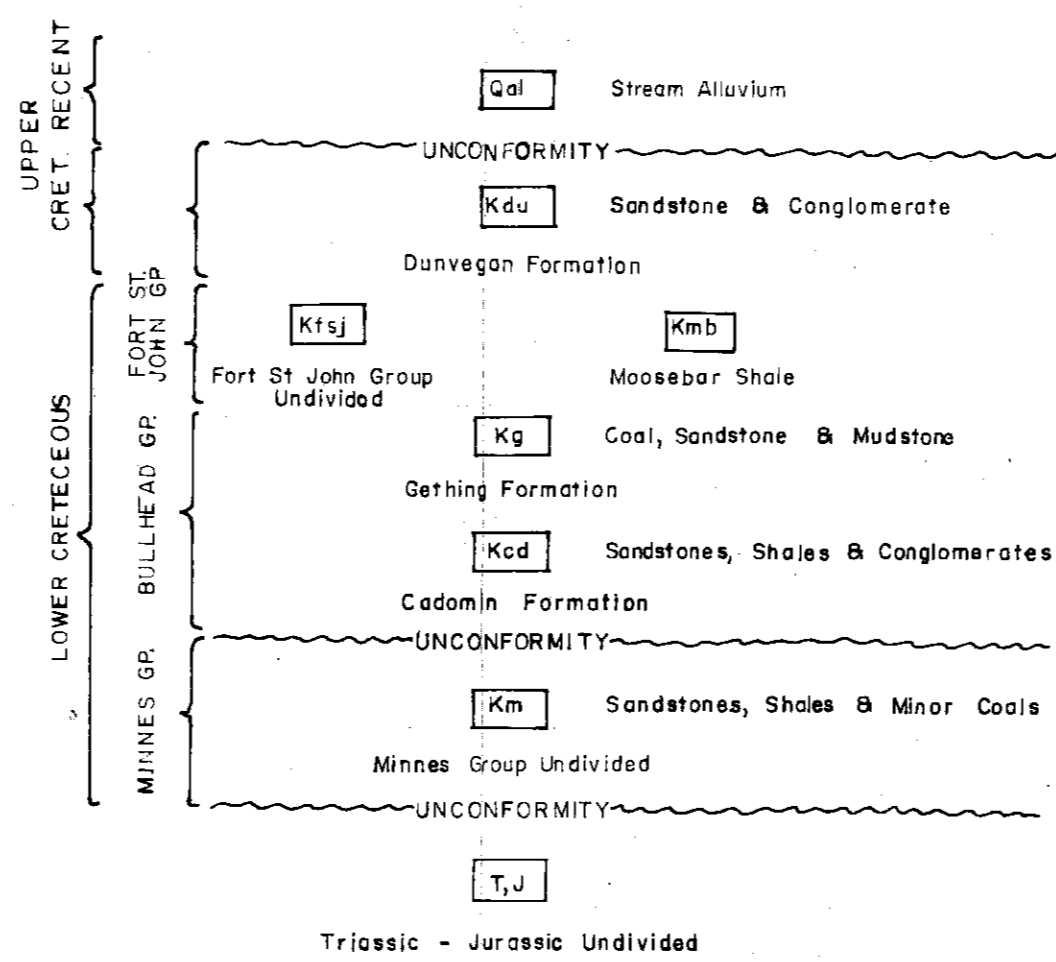


- LEGEND**
- Formation Boundary
 - Anticline
 - Syncline
 - Thrust Fault
 - Strike & Dip - Published
 - Strike & Dip - Measured
 - Coal Mine (Abandoned)
 - Coal Occurrence Greater Than 5' Other Than Trojan Seam
 - Drill Hole
 - Roads - Existing

- UTAH MINES LTD COAL LICENCES
- BURNS FOUNDATION LEASES



7

455

FIG 4 PE-20075 PERFECT 73(3)A.

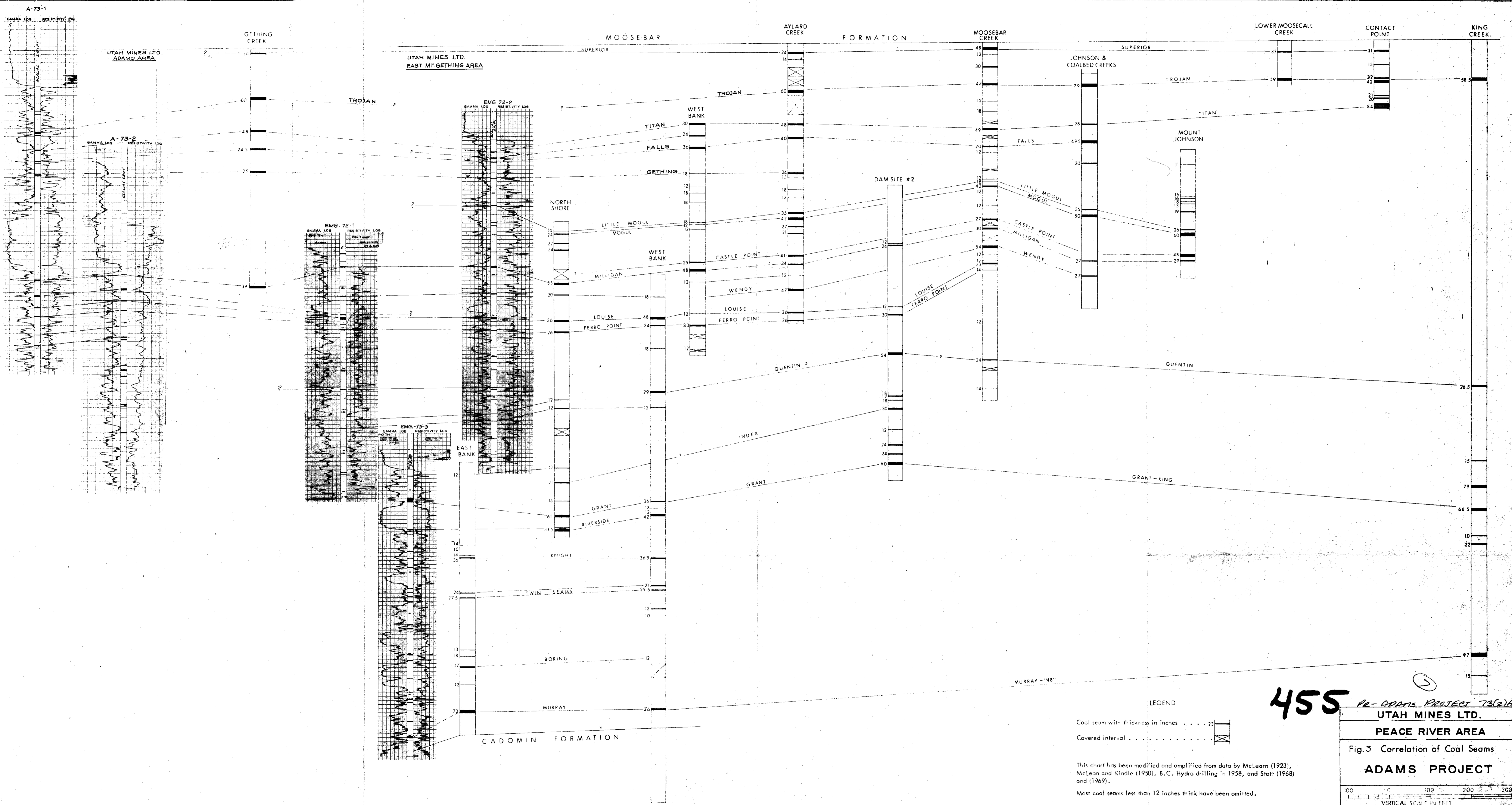
UTAH MINES LTD.
MINERAL EXPLORATION & DEVELOPMENT DEPARTMENT
VANCOUVER BRITISH COLUMBIA

PEACE RIVER AREA

GEOLOGICAL MAP OF
THE ADAMS BLOCK

September 1973

Scale : Miles



455 PR-ADAMS PROJECT 73(2)A

UTAH MINES LTD.

PEACE RIVER AREA

Fig. 3 Correlation of Coal Seams

ADAMS PROJECT

100 200 300
VERTICAL SCALE IN FEET

DEC. 1973

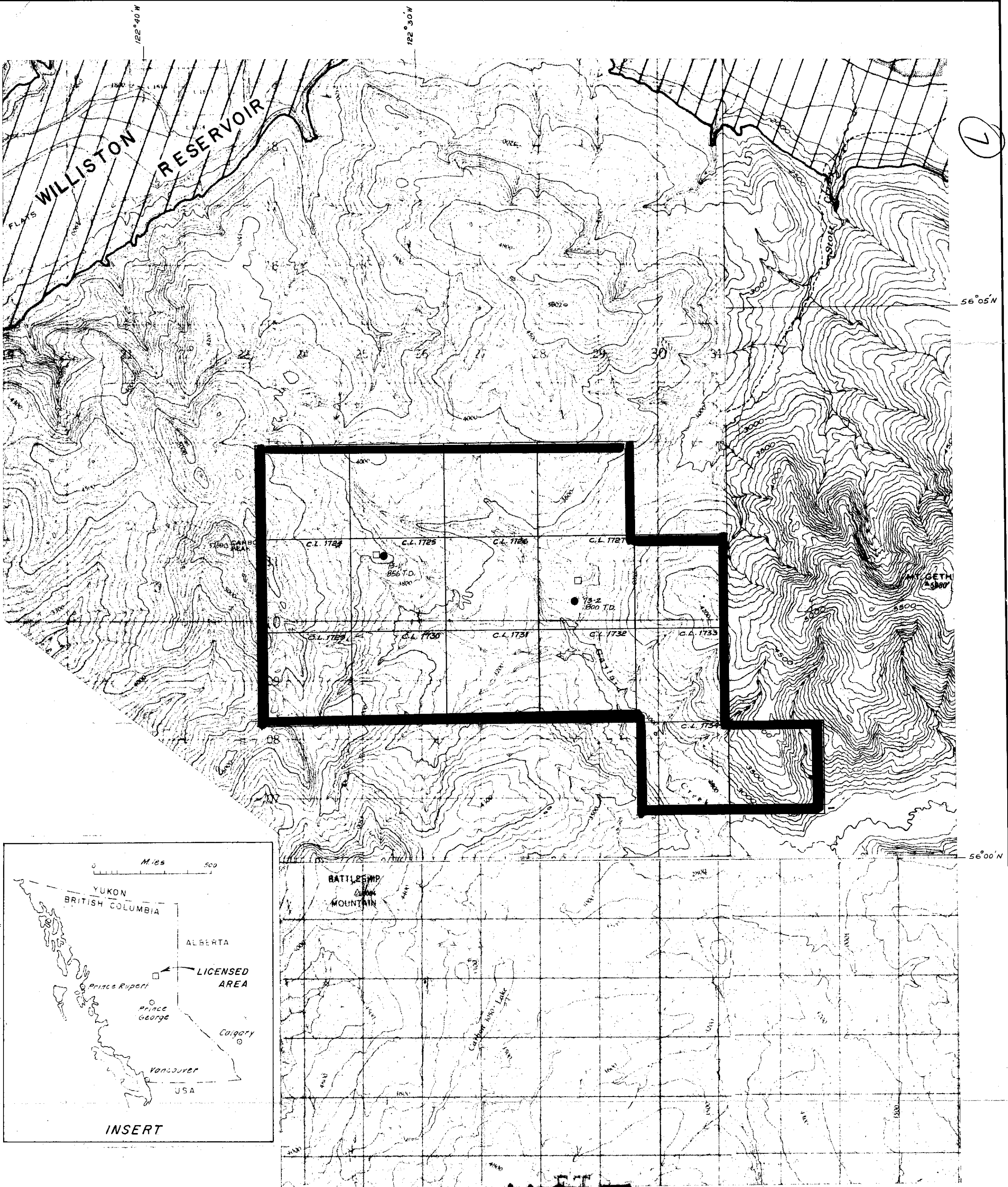
LEGEND

Coal seam with thickness in inches 23"

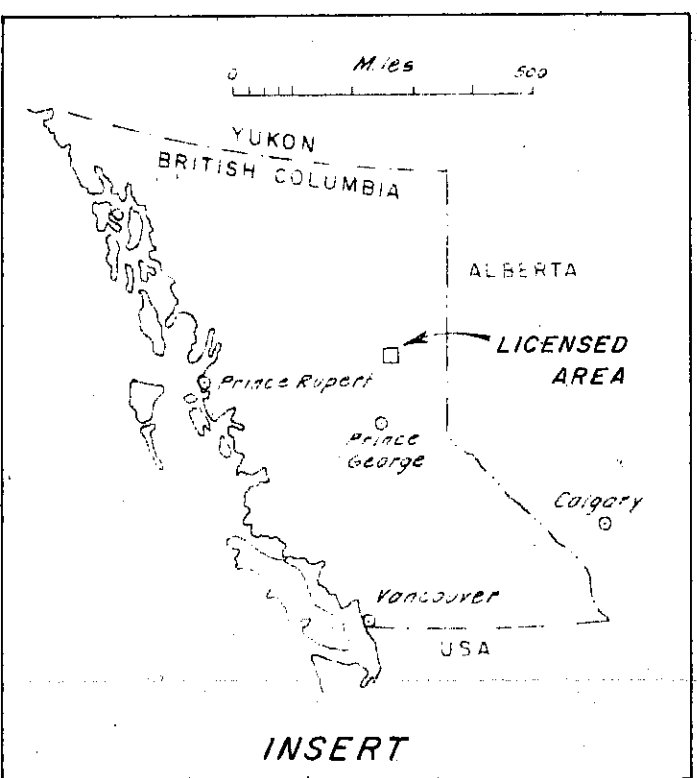
Covered interval

This chart has been modified and amplified from data by McLearn (1923), McLean and Kindle (1950), B.C. Hydro drilling in 1958, and Stott (1968) and (1969).

Most coal seams less than 12 inches thick have been omitted.



7



LEGEND

- DRILL SITE 1973
- HELICOPTER PAD

455

FIGURE 1
PC-ADAMS PROJECT 73(2)A.
UTAH MINES LTD.
 MINERAL EXPLORATION & DEVELOPMENT DEPARTMENT
 VANCOUVER BRITISH COLUMBIA

COAL - BRITISH COLUMBIA
ADAMS BLOCK

Work by: D. N. LeN.	Date: NOV. 1973	NTS Ref. 94B/2
Drawn by:	Revised:	MAP of

SCALE 1:50,000

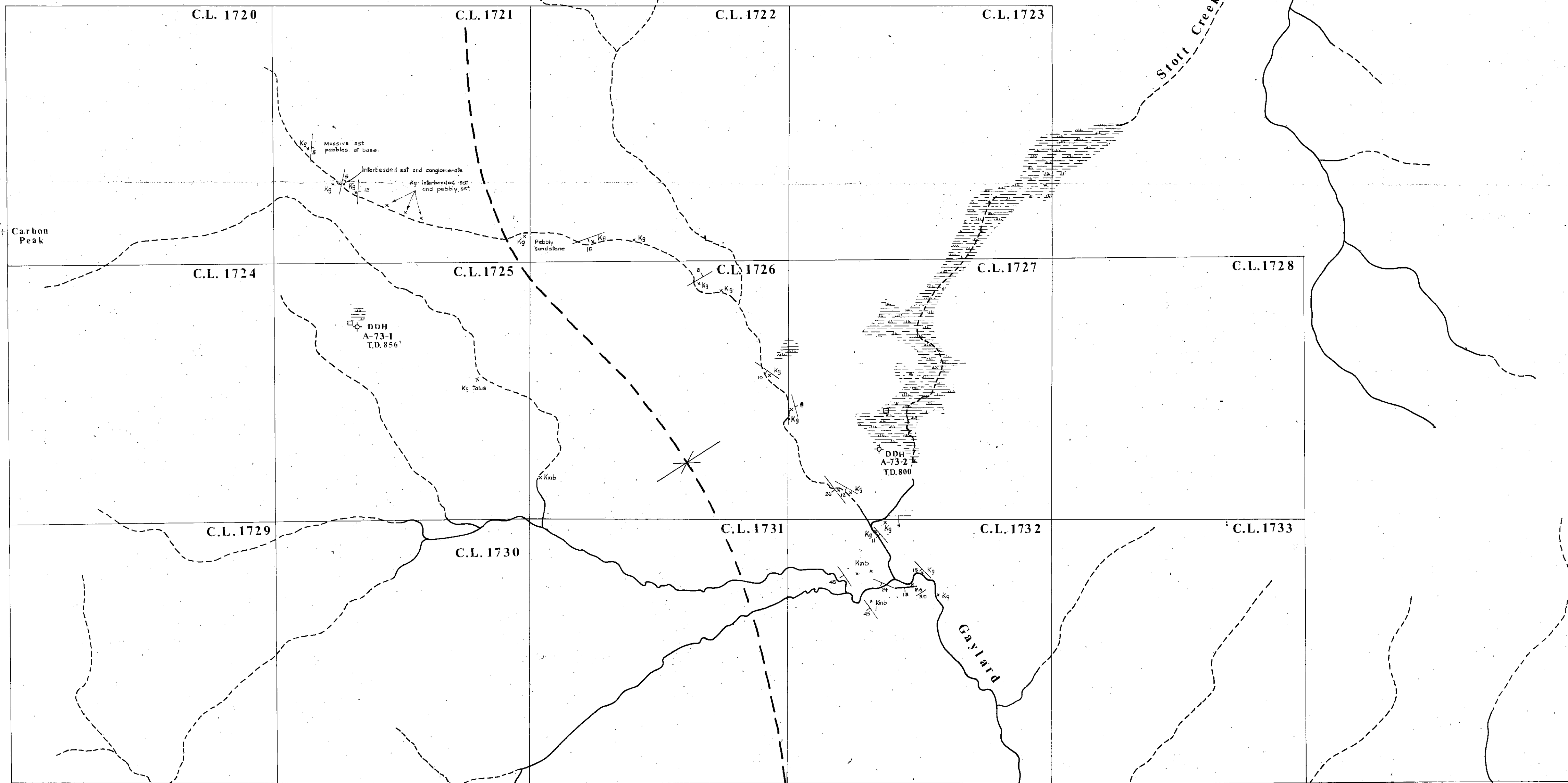


FIGURE 5

LEGEND

GEOLOGY
 Kmb Moosebar Shale Formations
 Kg Gething Formation

SYMBOLS
 x Outcrop
 20 Bedding attitude
 2.5' net / 2.0 gross Bedding attitude coal seam indicating net and gross thickness
 Trace of the Adams Synclinal Axis
 □ Helicopter Pad

⊕ Diamond Drill Hole
 C.L. 1725 Coal licence boundary with licence number indicated
 Stream
 Intermittent Stream
 Swamp

UTAH MINES LTD.
 MINERAL EXPLORATION & DEVELOPMENT DEPARTMENT
 VANCOUVER BRITISH COLUMBIA

COAL - BRITISH COLUMBIA
ADAMS BLOCK
STREAM GEOLOGY TRAVERSE MAP

Work by: D.N. leNobel	Date: Dec. 1973	NTS Ref. 94B/2
Drawn by: D.N. leNobel	Revised:	MAP of

Feet 1000 500 0 1/2 Miles

455

PR-ADAMS PROJECT 73(2)A

②