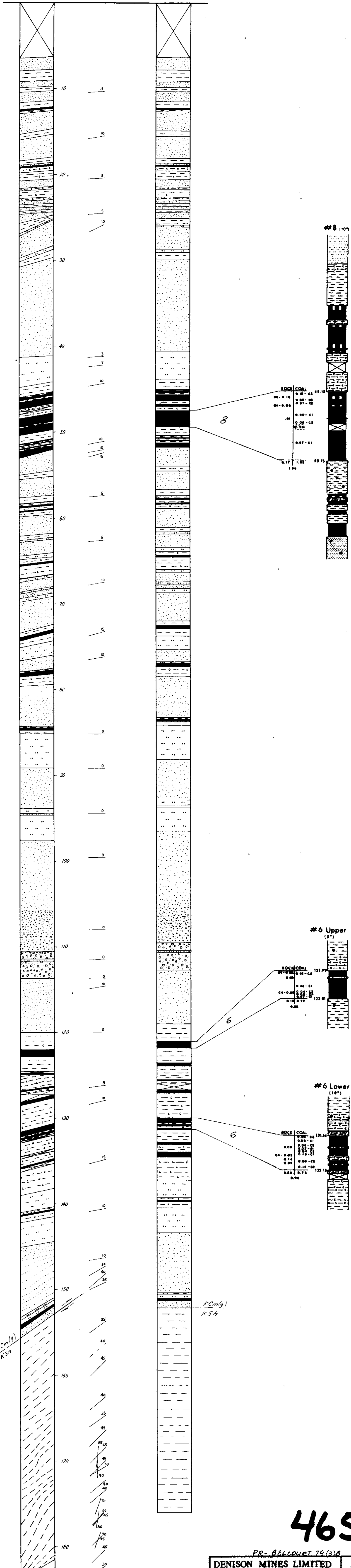


APPARENT THICKNESS  
1:200

TRUE THICKNESS  
1:200

SEAM DETAIL  
1:50



8

ROCK	COAL	DEPTH
0.10	0.10 - C8	48.15
0.07	0.07 - C8	
0.00	0.07 - C8	
0.01	0.40 - C1	
0.00	0.00 - C8	
0.00	0.00 - C8	
0.00	0.00 - C8	
0.17	1.00	50.15
1.00		

6

ROCK	COAL	DEPTH
0.00	0.10 - C8	121.77
0.00	0.10 - C8	
0.00	0.00 - C1	
0.00	0.00 - C1	
0.10	0.71	122.81
0.00		

6

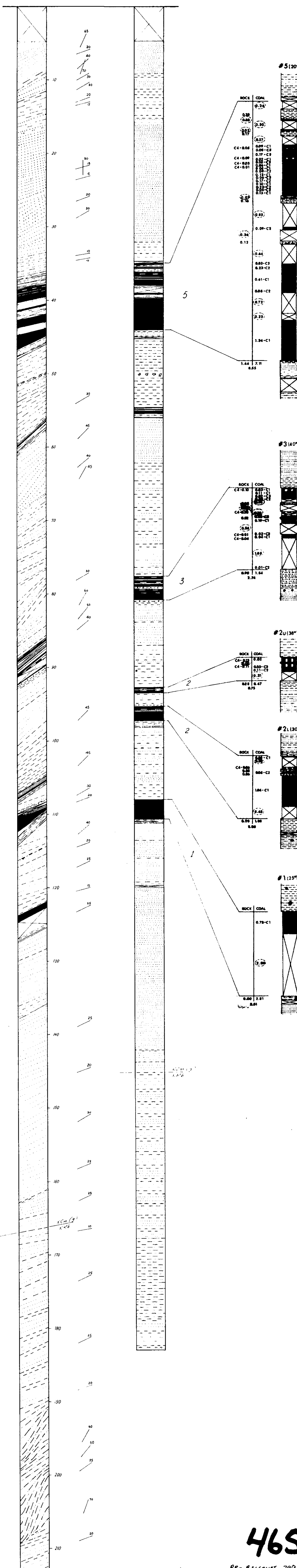
ROCK	COAL	DEPTH
0.00	0.10 - C8	131.14
0.00	0.10 - C8	
0.00	0.00 - C8	
0.00	0.00 - C8	
0.14	0.00 - C8	
0.00	0.14 - C8	
0.00	0.14 - C8	
0.00	0.71	132.13
0.00		

465

PR-BELCOURT 79(3)A

DENISON MINES LIMITED (COAL DIVISION)		VANCOUVER BRITISH COLUMBIA	
<b>BELCOURT DRILL LOG BD-7902</b>			
Drawn by	Checked by	Scale	1:200
Reviewed by	Survey	Drawing Number	
Approved by	Date	Rock in BGA	R01

APPROXIMATE THICKNESS OF SEAM DETAIL



#5 (20')

ROCK	COAL
0.39	0.26
0.80	0.80
0.02	0.17
0.27	
C4-008	0.09-C1
C4-008	0.17-C2
C4-003	0.08-C3
C4-001	0.08-C4
	0.13-C5
	0.10-C6
	0.13-C7
	0.13-C8
	0.13-C9
	0.13-C10
0.09	0.16
0.83	
0.09-C2	
0.34	
0.12	
0.44	
0.83-C2	
0.23-C7	
0.41-C1	
0.88-C2	
0.72	
0.23	
1.94-C1	
1.44	7.11
	8.55

#3 (40')

ROCK	COAL
C4-010	0.11-C1
C4-010	0.11-C2
C4-010	0.11-C3
0.88	0.19-C1
0.85	
C4-001	0.22-C1
C4-004	0.22-C2
1.98	
0.01-C2	
0.90	1.84
	2.74

#2U (38')

ROCK	COAL
C4-010	0.22
C4-011	0.09-C2
	0.31-C2
0.88	0.47
	0.75

#2L (30')

ROCK	COAL
C4-008	0.08-C1
0.88	0.08-C2
0.88	
1.84-C1	
0.88	
0.80	1.88
	2.68

#1 (25')

ROCK	COAL
	0.78-C1
0.88	
0.80	2.81
	3.61

465

PR-BELCOURT 79(B) B

**DENISON MINES LIMITED**  
(COAL DIVISION)  
VANCOUVER BRITISH COLUMBIA

**BELCOURT DRILL LOG**  
BD 7903

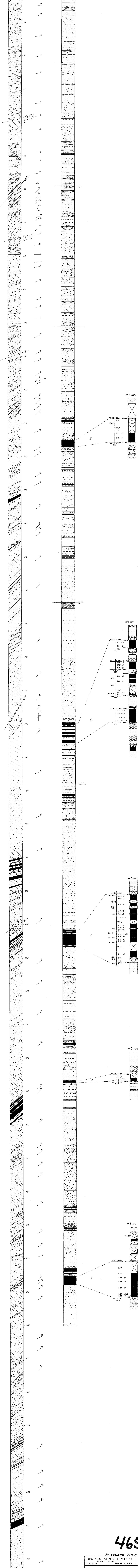
DRAWN BY: <i>SM</i>	DATE: 02/79	SCALE: 1/200
PREPARED BY: <i>SM</i>	DATE:	DRAWING NUMBER
APPROVED BY: <i>MD</i>	DATE:	BLCR 79-06A-R01

COPY 7

APPARENT THICKNESS  
1:200

TRUE THICKNESS  
1:200

SEAM DETAIL  
1:50



TD 473.35m

465

PR. BELCOURT 791318

**DENISON MINES LIMITED**  
VANCOUVER BRITISH COLUMBIA

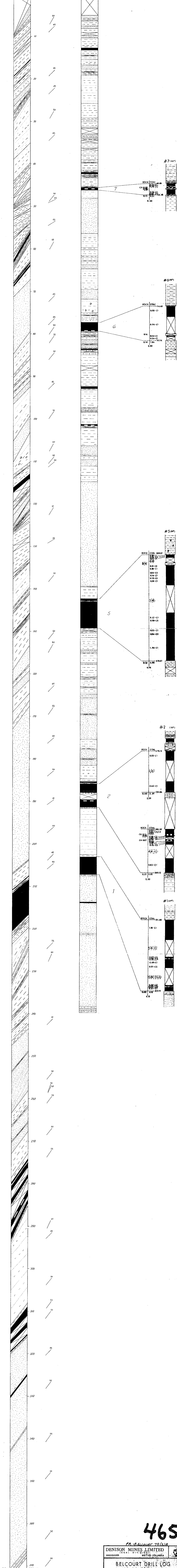
**BELCOURT DRILL LOG**  
BD 7904

DRAWN BY: [Signature] DATE: OCT '78 SCALE: 1:200  
 PREPARED BY: [Signature] DATE: [ ] DRAWING NUMBER  
 APPROVED BY: [Signature] DATE: [ ] BELCA 79-842-201

APPARENT THICKNESS  
1:200

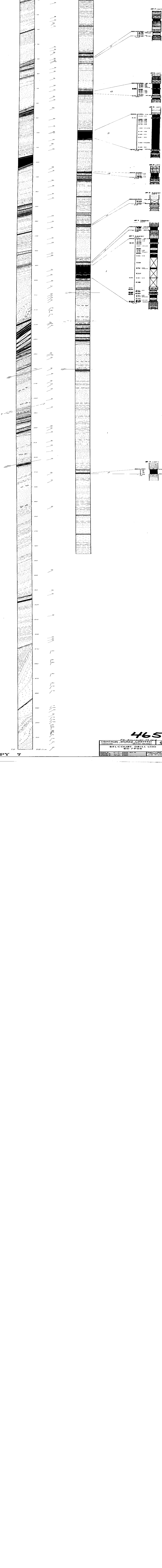
TRUE THICKNESS  
1:200

SEAM DETAIL  
1:50



465

PA-BELCOURT 79(3)A  
DENISON MINES LIMITED  
VANCOUVER BRITISH COLUMBIA  
BELCOURT DRILL LOG  
BD 7909  
DRAWN BY: J. P. [unclear] DATE: [unclear]  
PREPARED BY: [unclear] DATE: [unclear]  
APPROVED BY: [unclear] DATE: [unclear]  
SCALE: 1/200  
BENCH MARK: [unclear]  
BLK 79-882-801



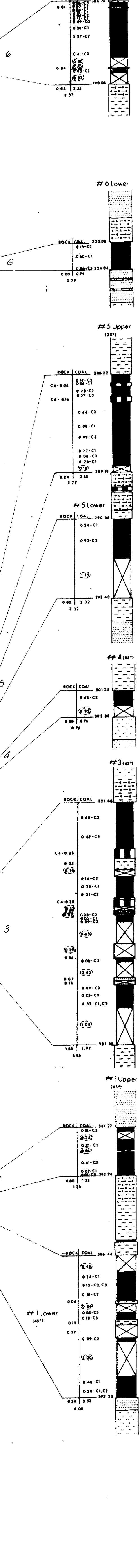
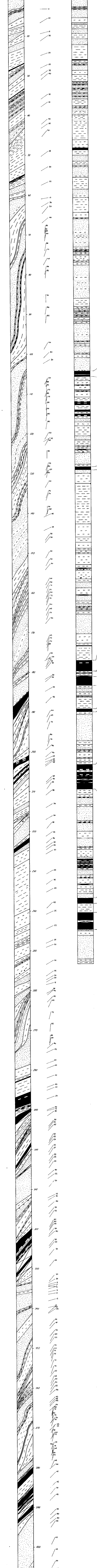
465

UNION PACIFIC RAILROAD COMPANY  
DENISON, MINN. BELCOUR DRILL LOG

APPARENT THICKNESS  
1:200

TRUE THICKNESS  
1:200

SEAM DETAIL  
1:30



465

COPY 7

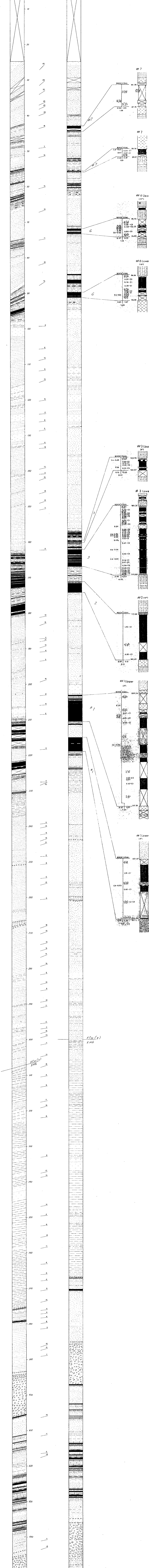
PR- Account 73 (3)A

DENISON MINES LIMITED 1601 21 <sup>st</sup> Street, Vancouver VANCOUVER BRITISH COLUMBIA	
BELCOURT DRILL LOG BD 7907	
Drawn by: C.V. [initials]	Scale: 1:30
Checked by: C.V. [initials]	Drawing Number: [blank]
Approved by: [initials]	Date: [blank]
Sheet No. 562-101	

APPARENT THICKNESS  
1:200

TRUE THICKNESS  
1:200

SEAM DETAIL  
1:50



465

COPY 7

PR- Belcourt 79(B)B

DENISON MINES LIMITED  
COAL DIVISION  
VANCOUVER BRITISH COLUMBIA

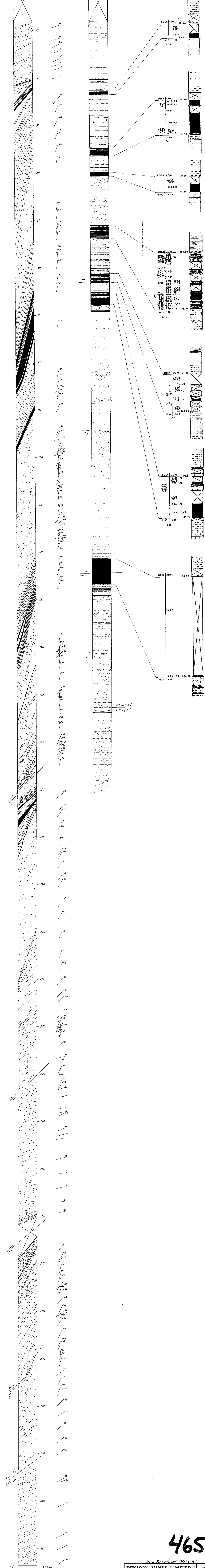
BELCOURT DRILL LOG  
SD 7908

DATE: 1952  
SCALE: 1:200  
DRAWN BY: [Signature]  
CHECKED BY: [Signature]  
APPROVED BY: [Signature]

APPARENT THICKNESS  
1:200

TRUE THICKNESS  
1:200

SEAM DETAIL  
1:50



DE-BELCOURT 79(3)B

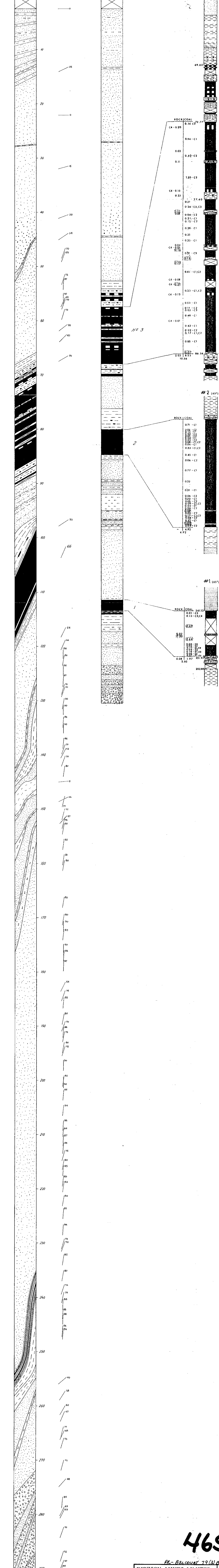
DENISON MINES LIMITED (COAL DIVISION) VANCOUVER		BRITISH COLUMBIA	
<b>BELCOURT DRILL LOG BD 7909</b>			
DRAWN BY: <i>ET</i>	DATE: Oct 98	SCALE: 1:200	
PREPARED BY: <i>ET</i>	DATE: -	DRAWING NUMBER	
APPROVED BY: <i>NLD</i>	DATE: -	BLCR 79-812-201	



APPARENT THICKNESS  
1:200

TRUE THICKNESS  
1:200

SEAM DETAIL  
1:30



465

PR-Belcourt 79(3)A

DENISON MINES LIMITED  
(COAL DIVISION)  
VANCOUVER BRITISH COLUMBIA

BELCOURT DRILL LOG  
BD 7910

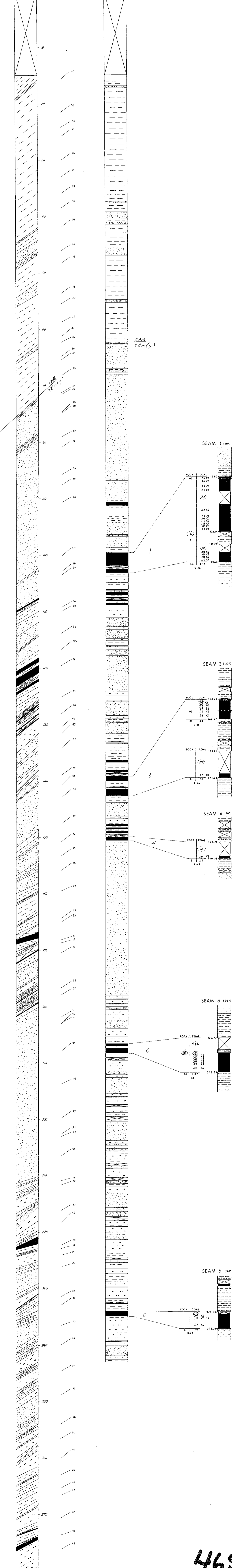
DRAWN BY: <i>RZ</i>	DATE: Oct. 79	SCALE: 1:200
DESIGNED BY: <i>RZ</i>	DATE:	DRAWING NUMBER
APPROVED BY: <i>MLD</i>	DATE:	B/C 79-862-001

COPY 7

APPARENT THICKNESS  
1:200

TRUE THICKNESS  
1:200

SEAM DETAIL  
1:50



465

R-Belcourt 79(3)B

DENISON MINES LIMITED  
 (COAL DIVISION)  
 VANCOUVER BRITISH COLUMBIA

BELCOURT DRILL LOG  
 BD 7912

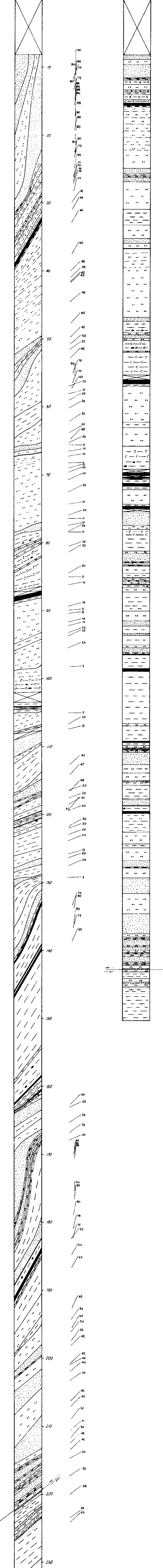
DRAWN BY: R.Z. DATE: Oct. 79 SCALE: 1:200  
 PREPARED BY: R.Z. DATE: DRAWING NUMBER  
 APPROVED BY: M.D. DATE: BLCR 79-862-R01

COPY 7

APPARENT THICKNESS  
1:200

TRUE THICKNESS  
1:200

SEAM DETAIL  
1:50



T.D. 231.30

465

TK- BELCOURT 79(3)A

**DENISON MINES LIMITED**  
(COAL DIVISION)  
VANCOUVER BRITISH COLUMBIA

**BELCOURT DRILL LOG**  
BD 7911

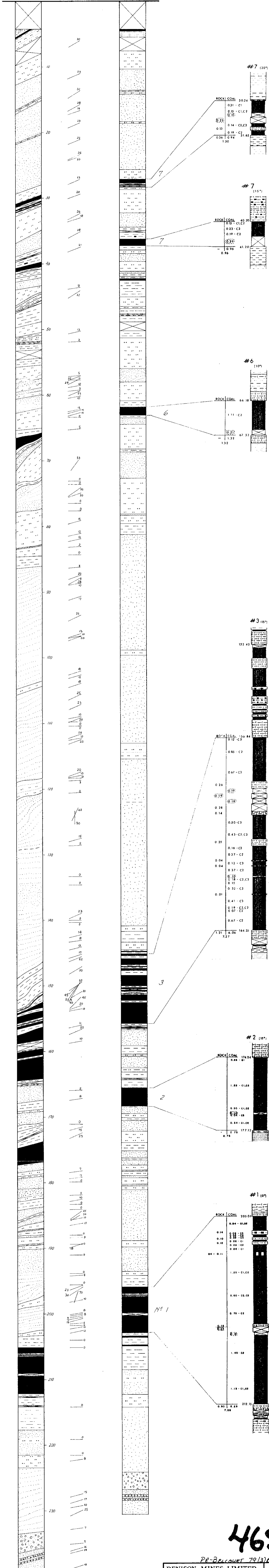
DRUMS BY: <i>R.F.</i>	DATE: <i>Nov 79</i>	SCALE: <i>1:200</i>
PREPARED BY: <i>R.F.</i>	DATE: <i>Nov 79</i>	DRAWING NUMBER: <i>8000</i>
APPROVED BY: <i>M.D.</i>	DATE: <i>Nov 79</i>	SICA 79-862-AR1

COPY 7

APPARENT THICKNESS  
1:200

TRUE THICKNESS  
1:200

SEAM DETAIL  
1:50



465

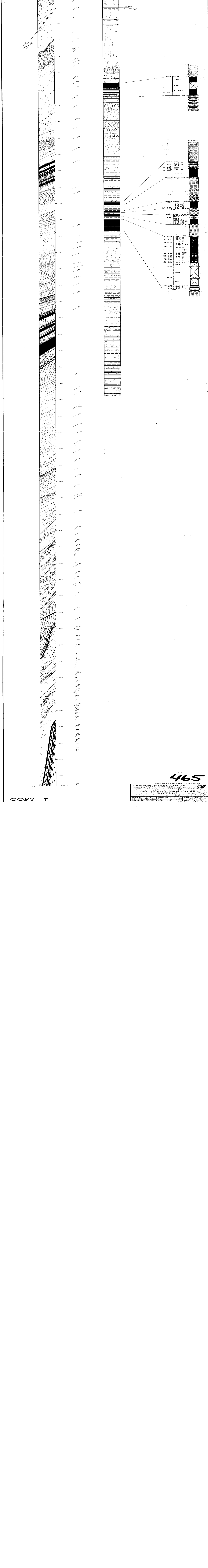
PR-BELCOURT 7913/6

DENISON MINES LIMITED  
(COAL DIVISION)  
VANCOUVER BRITISH COLUMBIA

**BELCOURT DRILL LOG**  
BD 7913

DRAWN BY: RZ	DATE: Oct. 79	SCALE: 1:200
PREPARED BY: RZ	DATE:	DRAWING NUMBER
APPROVED BY: MD	DATE:	BICA 79-862-R01

COPY 7



COPY 7

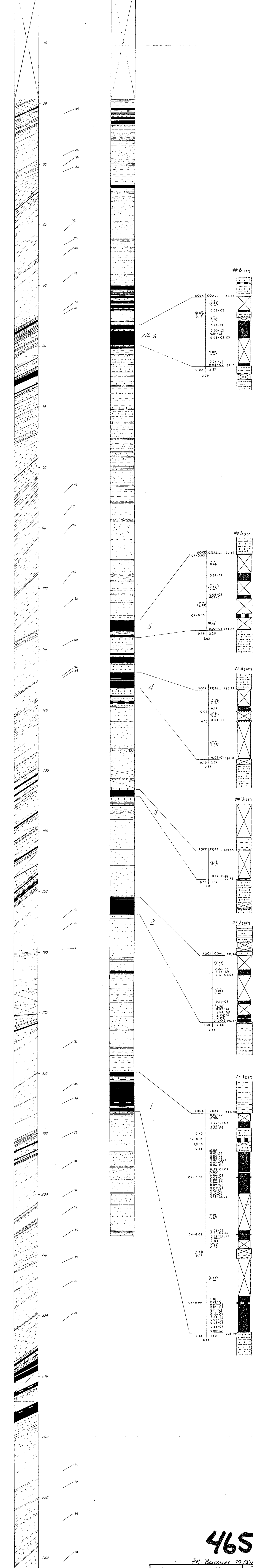
465

DENISON, MILNE, HUNTER & CO.  
 BELMONT, BRILLIANT  
 BD 7914

APPARENT THICKNESS  
1:200

TRUE THICKNESS  
1:200

SEAM DETAILS  
1:50



COPY 7

465

PR-Belcourt 79 (3)6

DENISON MINES LIMITED  
(COAL DIVISION)  
VANCOUVER BRITISH COLUMBIA

BELCOURT DRILL LOG  
BD 7915

DRAWN BY: [Signature] DATE: Oct 79 SCALE: 1:200  
 PREPARED BY: [Signature] DATE: [ ] DRAWING NUMBER  
 APPROVED BY: [Signature] DATE: [ ] BLOCK # 862-801