

TR. CARBON CREEK 76(2)C-1

1976 REPORT OF EXPLORATION ACTIVITIES
ON THE CARBON CREEK PROPERTY
(MAPS)

D.W. LENOBEL

(BOOK 8-1)

13/14
1976

GEOLOGICAL BRANCH
ASSESSMENT REPORT

00 501

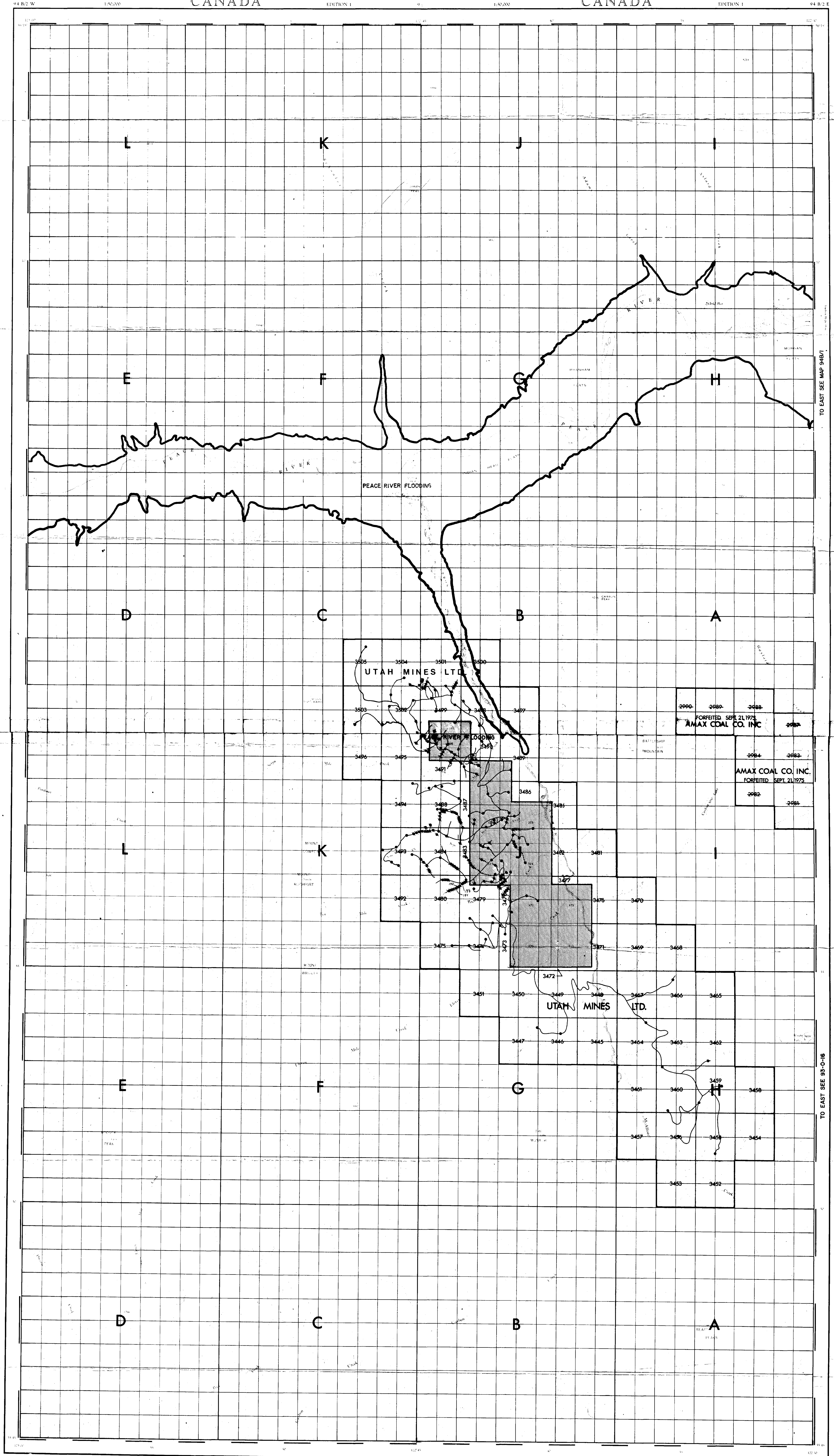
COAL 94-B-2

COAL 93-0-1

① 501 13/14

DRILL LOG 1004 THRU 1014 (2015)

RE - CARBON CLASH 76(2)C

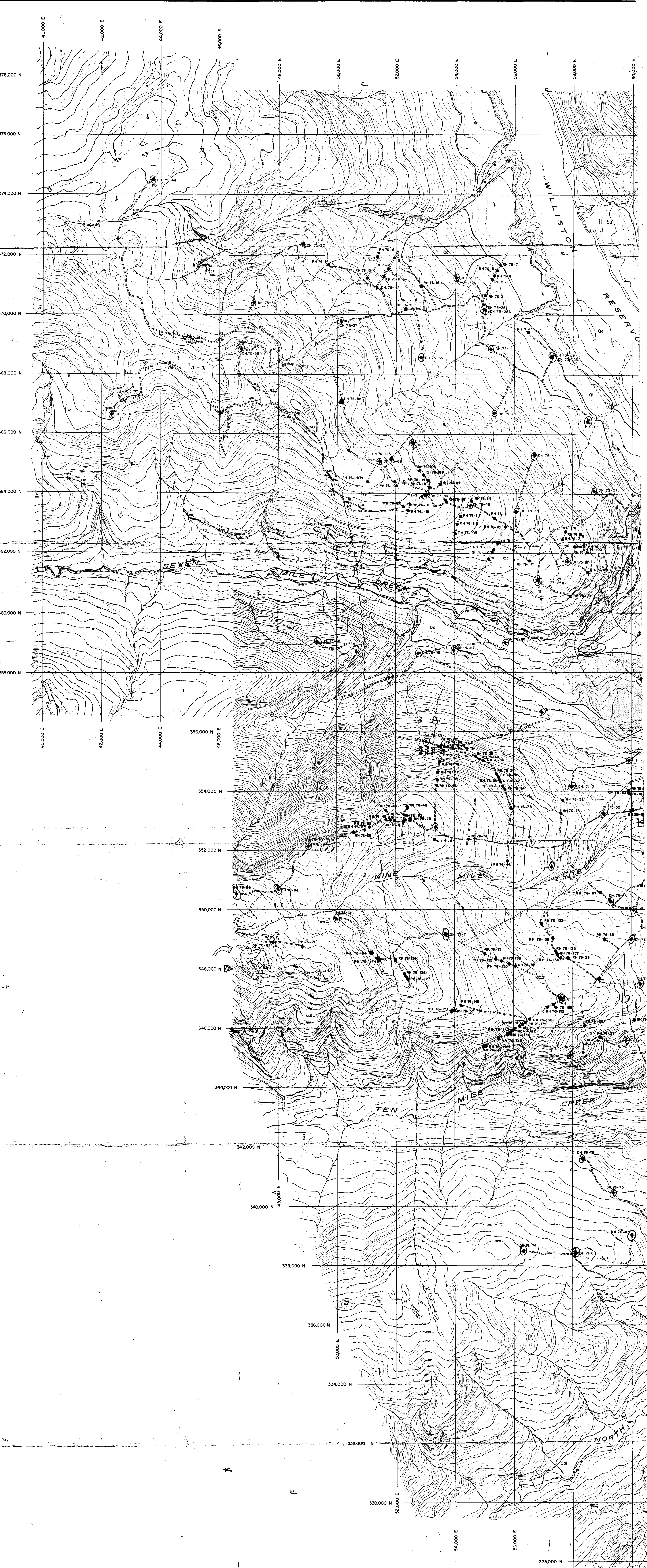


177.69
 177.73
 177.77
 177.81
 177.85
 177.89
 177.92
 177.96
 178.00
 178.04
 178.08
 178.12
 178.16
 178.20
 178.23
 178.27
 178.31
 178.35
 178.39
 178.42
 178.45
 178.49
 178.53
 178.57
 178.61
 178.65
 178.69
 178.73
 178.76
 178.80
 178.84
 178.88
 178.92
 178.96
 179.00
 179.04
 179.07
 179.11
 179.15
 179.19
 179.23
 179.27
 179.30
 179.34
 179.38
 179.42
 179.45
 179.49
 179.53
 179.57
 179.61
 179.65
 179.68
 179.72
 179.76
 179.80
 179.84
 179.88
 179.91
 179.95

LEGEND
 Drill hole
 Proposed drill hole
 Shaft
 Adit
 Trench or open cut
 Open pit or stripped area
 Seam tracing
 Access road
 Exploration road
 Proposed exploration road
 ALIENATED COAL RIGHTS
 PLATE 1

TO EAST SEE MAP 94B/1

TO EAST SEE 93-0-16



LEGEND

PLEISTOCENE TO RECENT

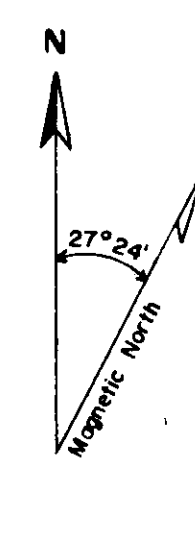
- STREAM ALLUVIUM
- GLACIAL TERRACE DEPOSITS, SAND GRAVEL
- GLACIAL DRIFT
- UNCONFORMITY

LOWER CRETACEOUS

- Bullhead Group**
- GETTING FORMATION
- CADOMIN FORMATION

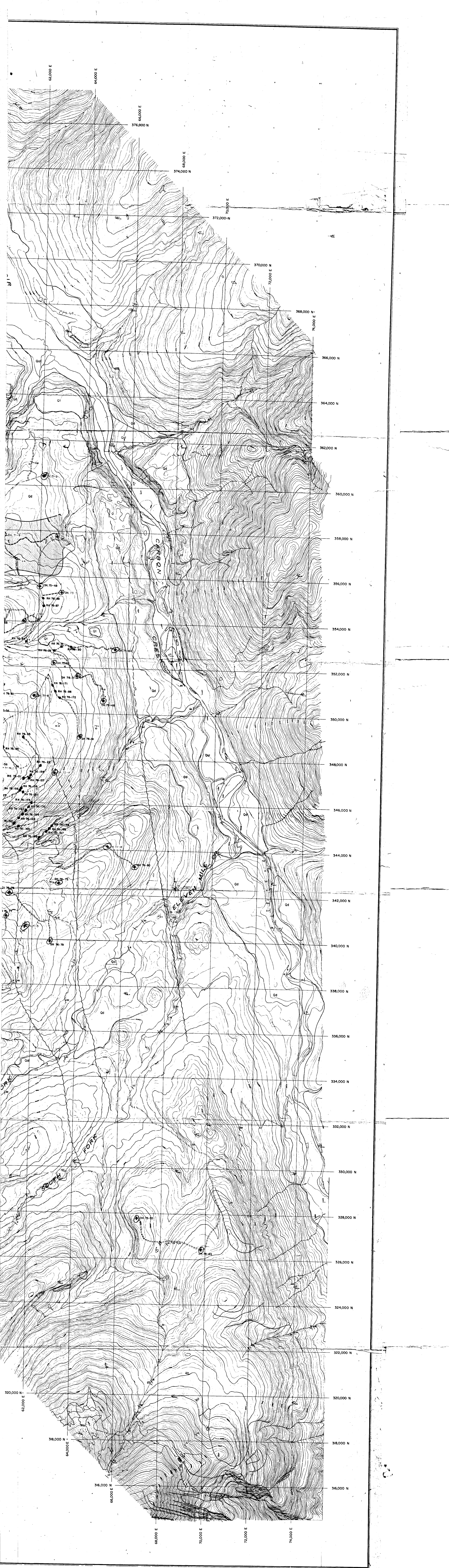
SYMBOLS

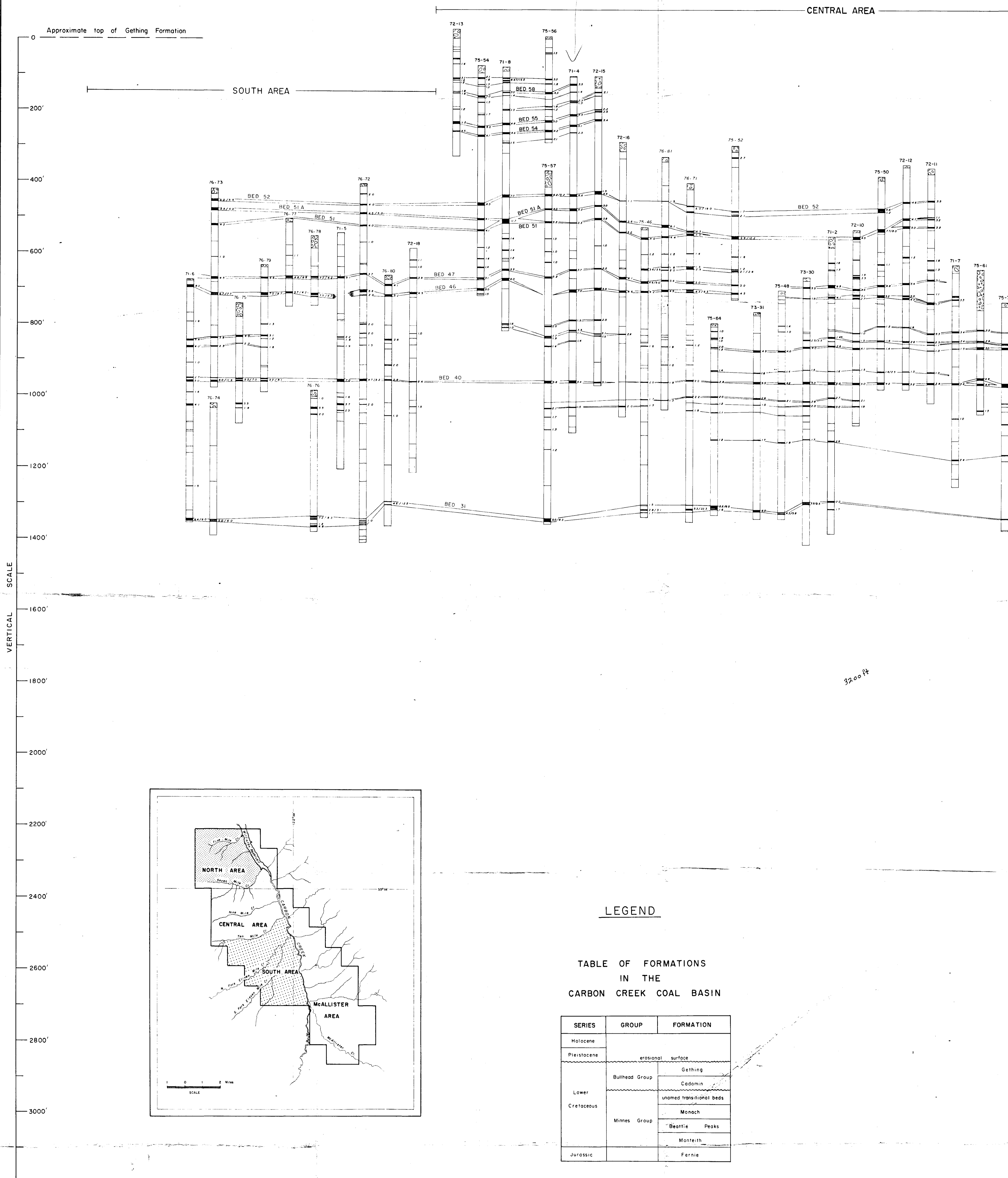
- FAULT, solid where indicated, dashed where inferred by drilling and photos
- AXIS OF MONOCLINAL FOLD
- CONTACT, definite
- CONTACT, approximate
- COAL BED SUBCROP, number indicates principle seam, solid where approximate, dashed where inferred
- OUTCROP with STRIKE and DIP of bedding
- ROAD
- COAL OUTCROP, measured thickness where indicated
- DIAMOND DRILL LOCATION
- ADIT, Burns Foundation 1940's
- BEDROCK CHANNEL (Area of Thick Overburden) defined by seismic survey
- PHOTOGEOLOGY**
- AIRPHOTO - bedding trace of strata
- STRIKE and DIP of bedding



PR Carbon Creek 76(2)c-1
13/11 501

UTAH MINES LTD. EXPLORATION DEPARTMENT <small>VANCOUVER BRITISH COLUMBIA</small> PR-CARBON CREEK 76(2)c-1 CARBON CREEK COAL BASIN (WEST HALF) GEOLOGY MAP (2) PEACE RIVER AREA, B.C.	
Work by: D.N. McNEIL Drawn by: GAIL SMEETON	Date: DECEMBER 1975 NTS Ref: 93 0/5 Revised:
0 500 1000 2000 SCALE IN FEET	





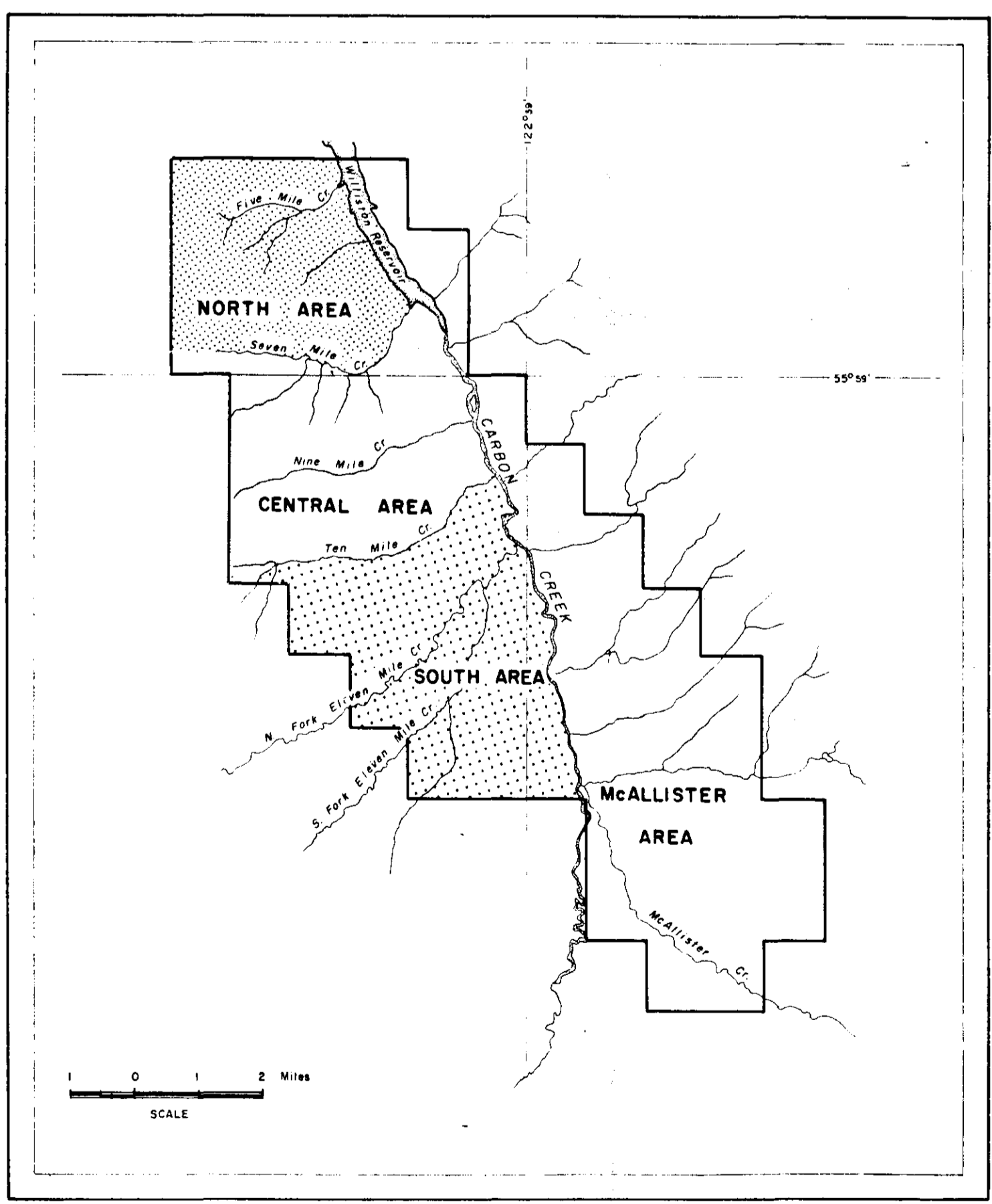
VERTICAL SCALE

CENTRAL AREA

Approximate top of Gething Formation

SOUTH AREA

3200 ft



LEGEND

TABLE OF FORMATIONS IN THE CARBON CREEK COAL BASIN

SERIES	GROUP	FORMATION
Holocene		
Pleistocene	erosional surface	
Lower Cretaceous	Bullhead Group	Gething
		Cadomin
	Minnes Group	unnamed transitional beds
		Monach
Jurassic		Beattie Peaks
		Monteith
		Fernie

COAL SEAM THICKNESS
Seams - 1.0 feet shown but thickness not included.

INDICATES PRINCIPLE COAL BEDS

INDICATES TENTATIVE CORRELATION

* DRILL HOLES 75-40 & 75-41 cannot be correlated to others with gamma or lithologic logs. They are located in this zone of the Gething Section on the basis of geologic mapping.

DRILL HOLES 73-32, 76-82, 76-84 & 76-86 did not penetrate the overburden

NOTE: The position of each drillhole bears no relation to topographic elevation. The diagram illustrates the approximate location of each drillhole within the coal-bearing Lower Cretaceous Gething Fm.

PK-CARBON CREEK 76(2)C
PLATE 3 501 13/14

UTAH MINES LTD.
EXPLORATION DEPARTMENT
VANCOUVER BRITISH COLUMBIA

CARBON CREEK WEST HALF
CROSS-SECTION OF DRILL HOLES
SHOWING CORRELATION OF COAL BEDS

Work by: D. N. leNoble & R. Karst Date: December 1975 NTS Ref. 93 O/15
Drawn by: T. Drews Revised: December 1976 Vertical Scale - 1" = 100'

SCALE IN FEET

Approximate top of Gething Formation 0

NORTH AREA

200'

400'

600'

800'

1000'

1200'

1400'

1600'

1800'

2000'

2200'

2400'

2600'

2800'

3000'

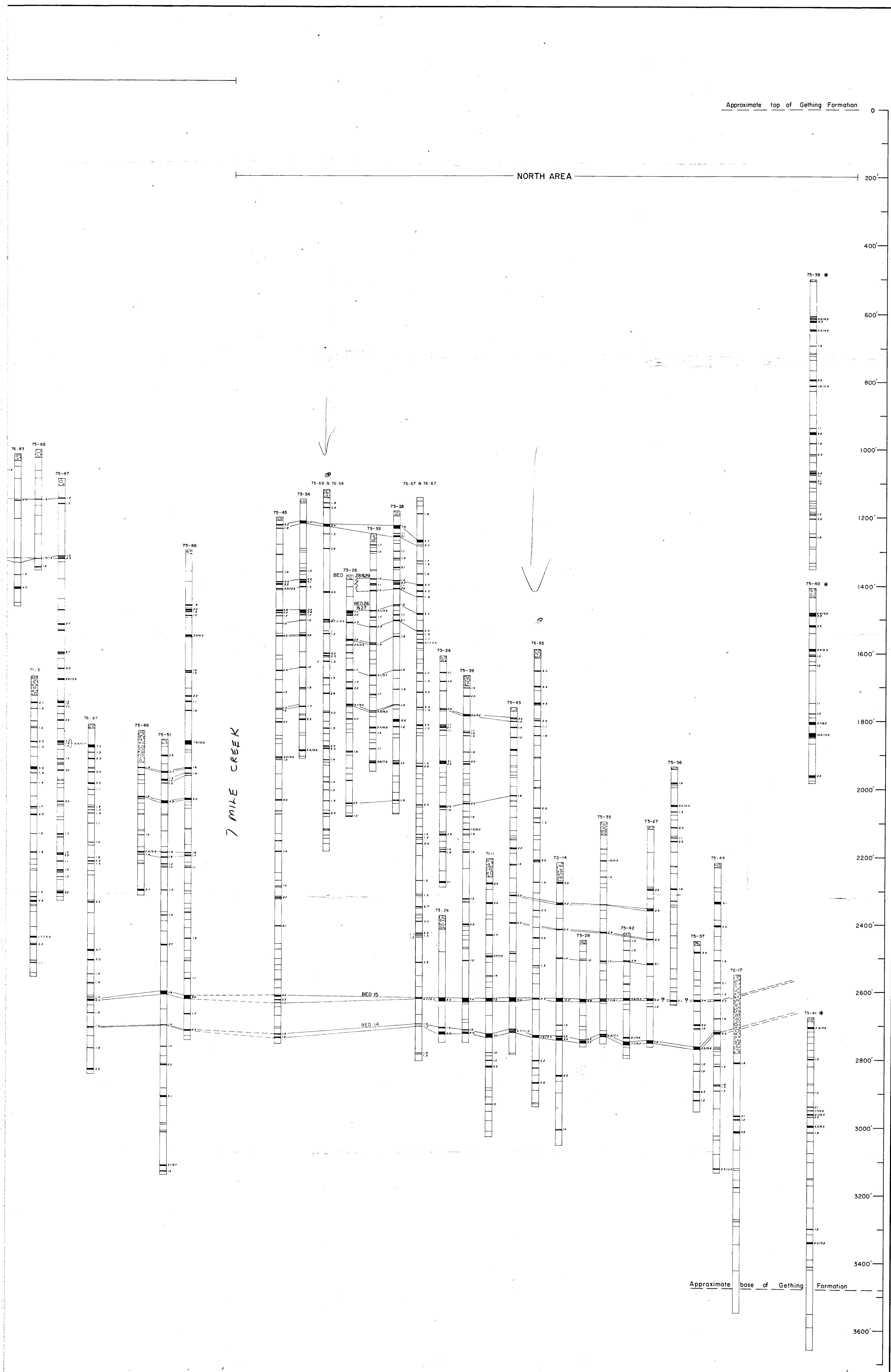
3200'

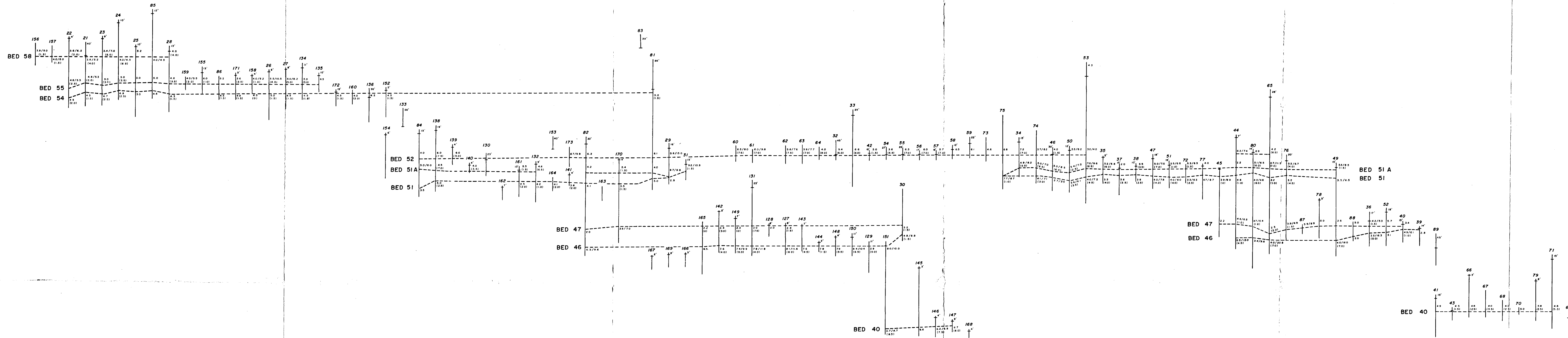
3400'

3600'

7 MILE CREEK

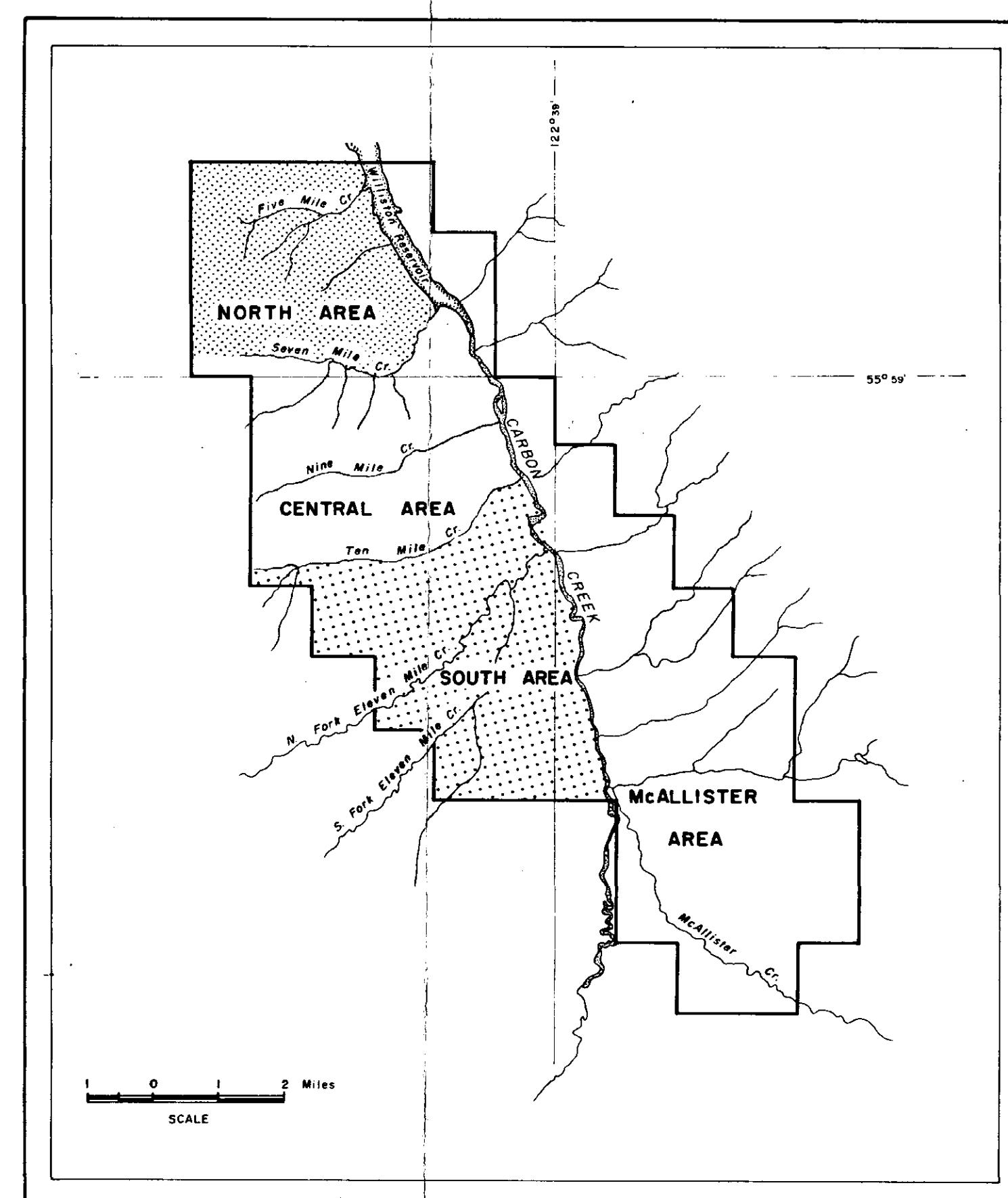
Approximate base of Gething Formation





CENTRAL AREA

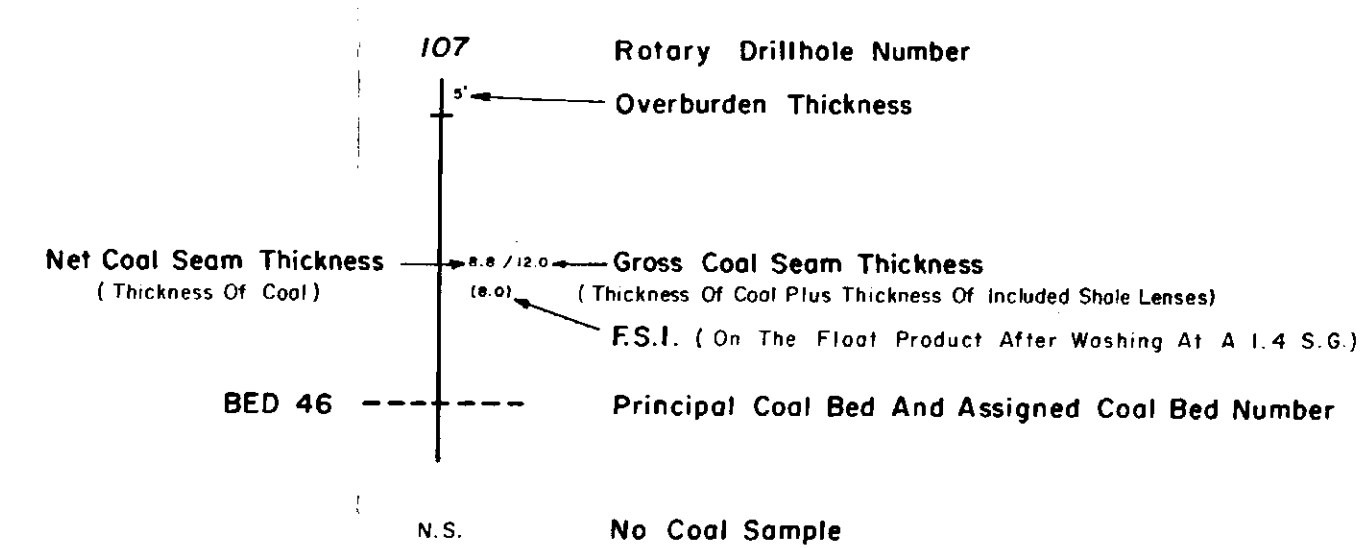
NORTH AREA



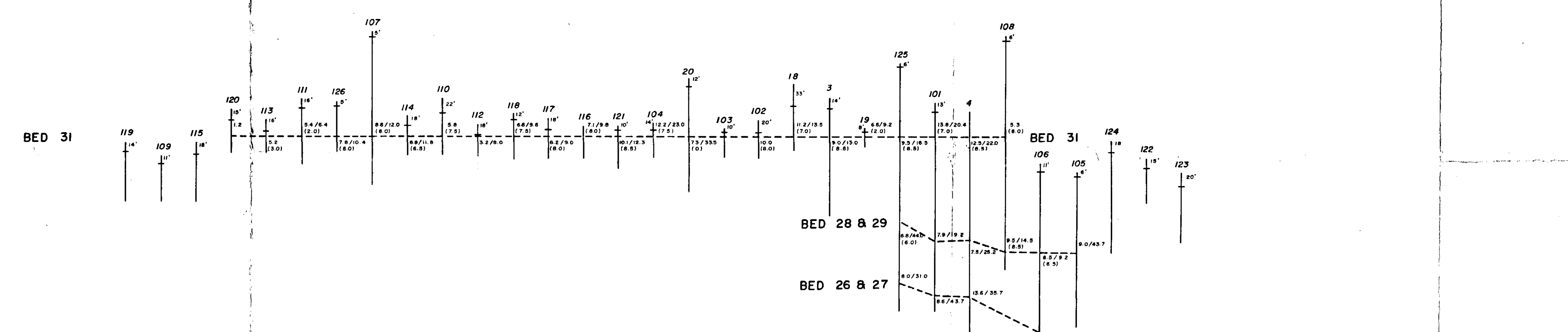
LEGEND

TABLE OF FORMATIONS IN THE CARBON CREEK COAL BASIN

SERIES	GROUP	FORMATION
Holocene		
Pleistocene	erosional surface	Gething
		Cadomin
Cretaceous	Bullhead Group	unnamed transitional beds
		Manach
	Minnes Group	Beattie Peaks
		Montevix
Jurassic		Ferne

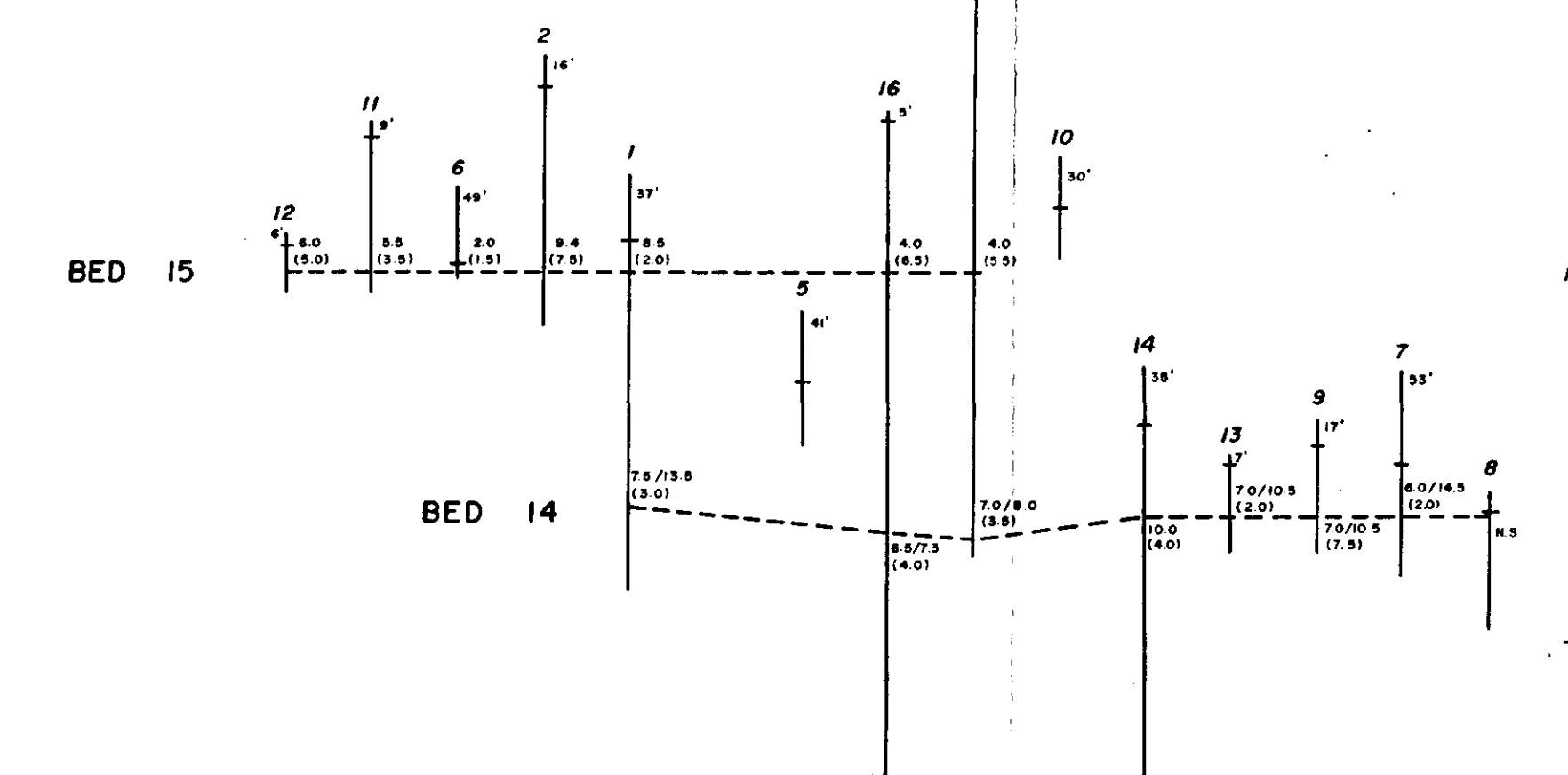


Drillhole No.	Bed 29 Only	Bed 28 & 29	Bed 27 Only	Bed 27&26
76-4		✓		✓
76-101		✓		✓
76-108		✓		✓
76-109	✓	No 28 in this hole		✓
76-108	✓		✓	
76-125		✓	✓	



NOTE: The position of each drillhole bears no relation to topographic elevation. The diagram illustrates the approximate location of each drillhole within the coal-bearing Lower Cretaceous Gething fm. Beds 14 and 15 being located within the basal Gething section and beds 58 and 55 within the upper Gething section.

The stratigraphic interval from bed 40 to 31 and from bed 31 to 15 is incorrect. See cross-section of diamond drill holes showing correlation of coal beds.



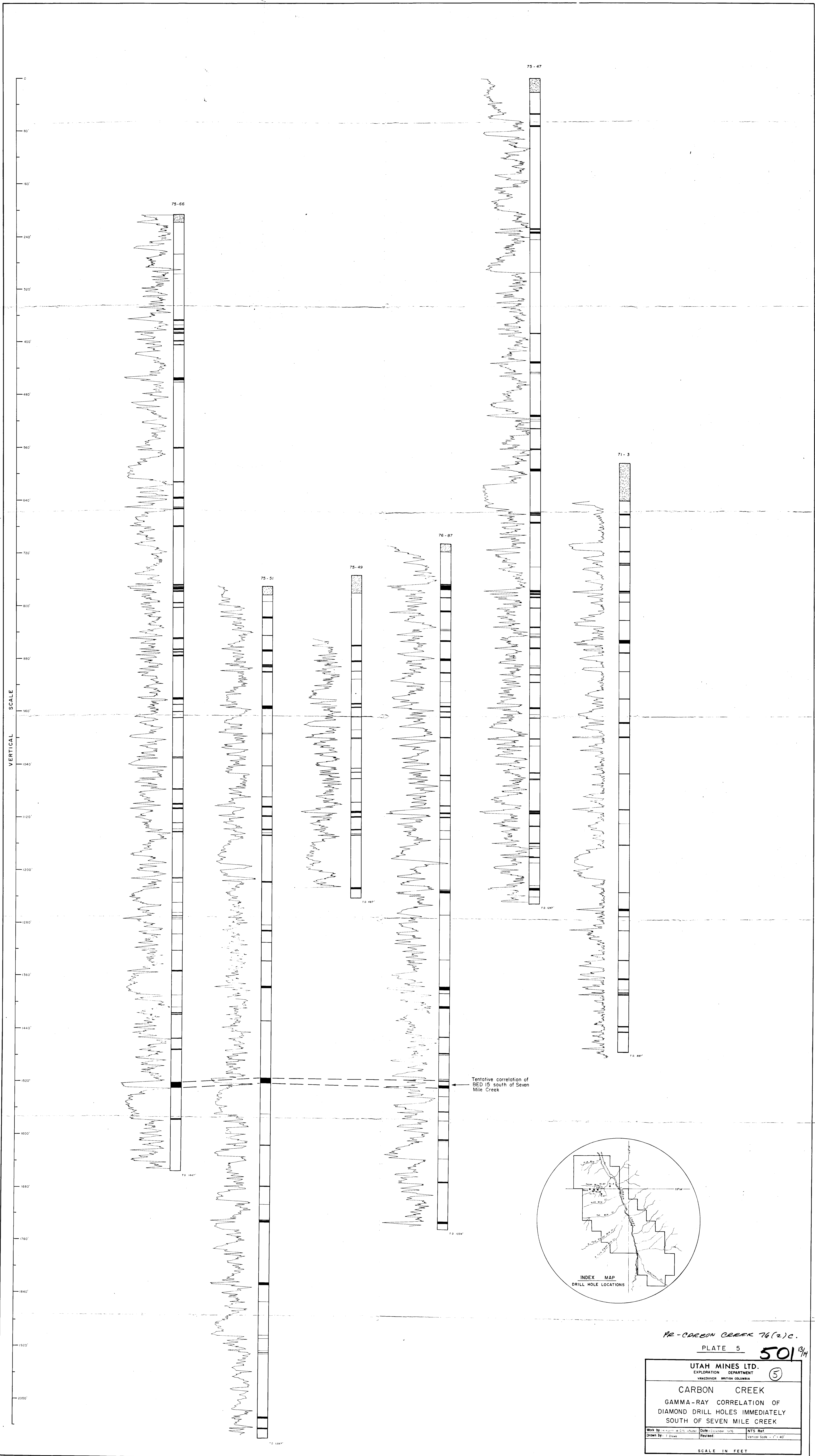
PR-CARBON CREEK 76 (2) C.
 PLATE 4 501 13/14

UTAH MINES LTD.
 EXPLORATION DEPARTMENT
 VANCOUVER BRITISH COLUMBIA

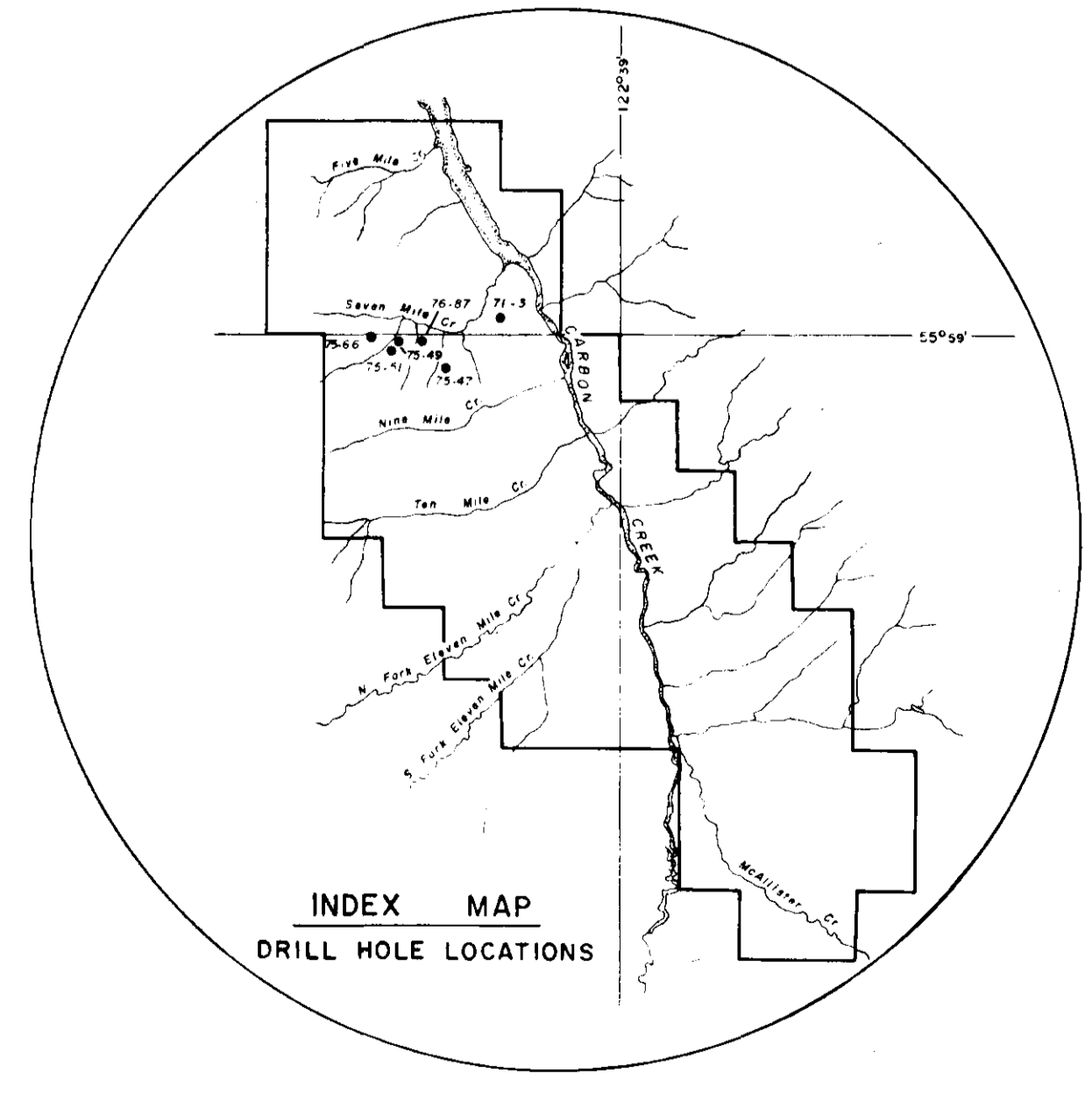
CARBON CREEK WEST HALF
 CROSS-SECTION OF ROTARY DRILL HOLES
 SHOWING CORRELATION OF COAL BEDS

Work by: D.N. Nisbet & G. Price Date: December 1976 NTS Ref: 93 0/15
 Drawn by: T. Cross Revised

SCALE IN FEET



Tentative correlation of
BED 15 south of Seven
Mile Creek

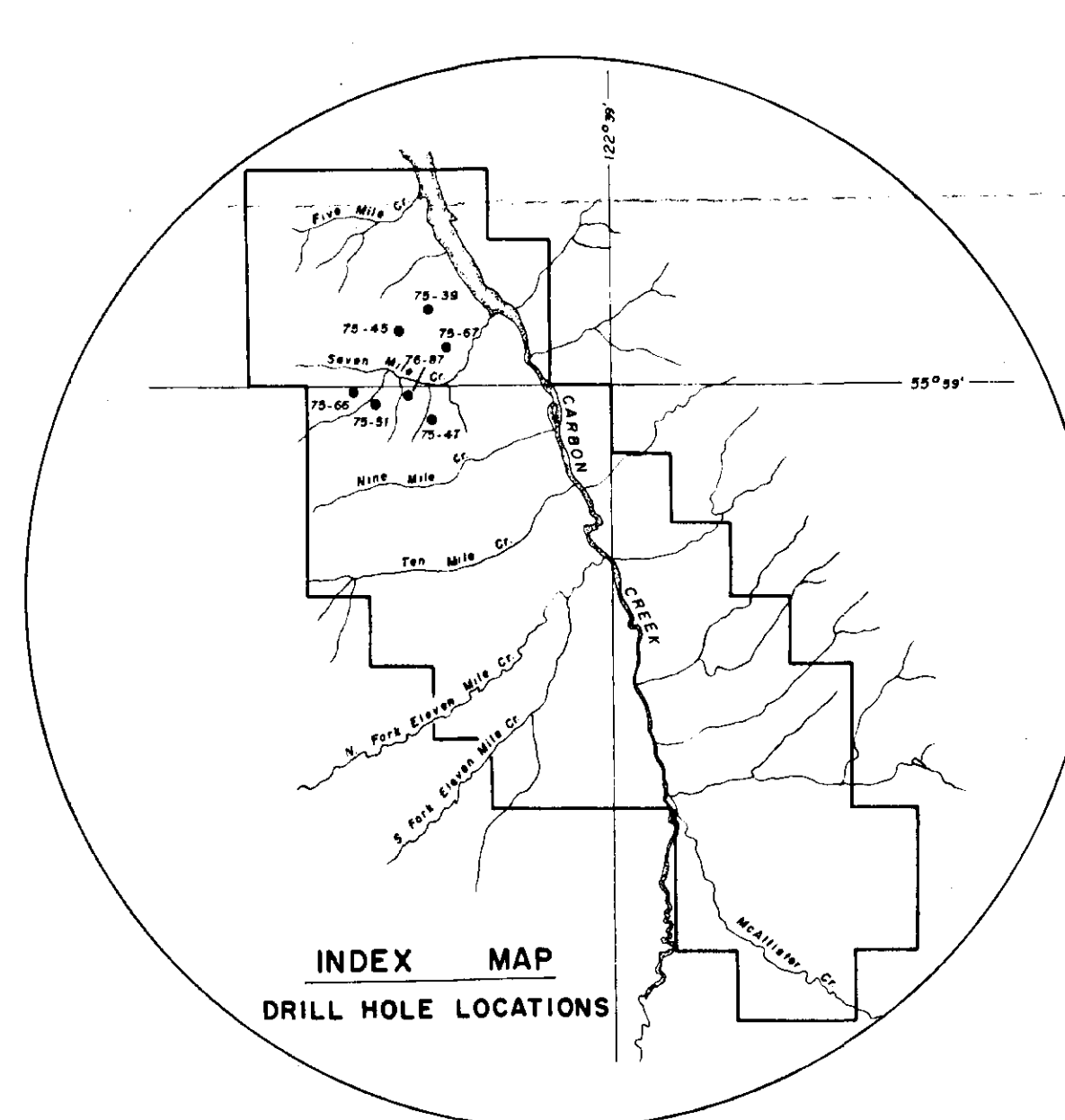
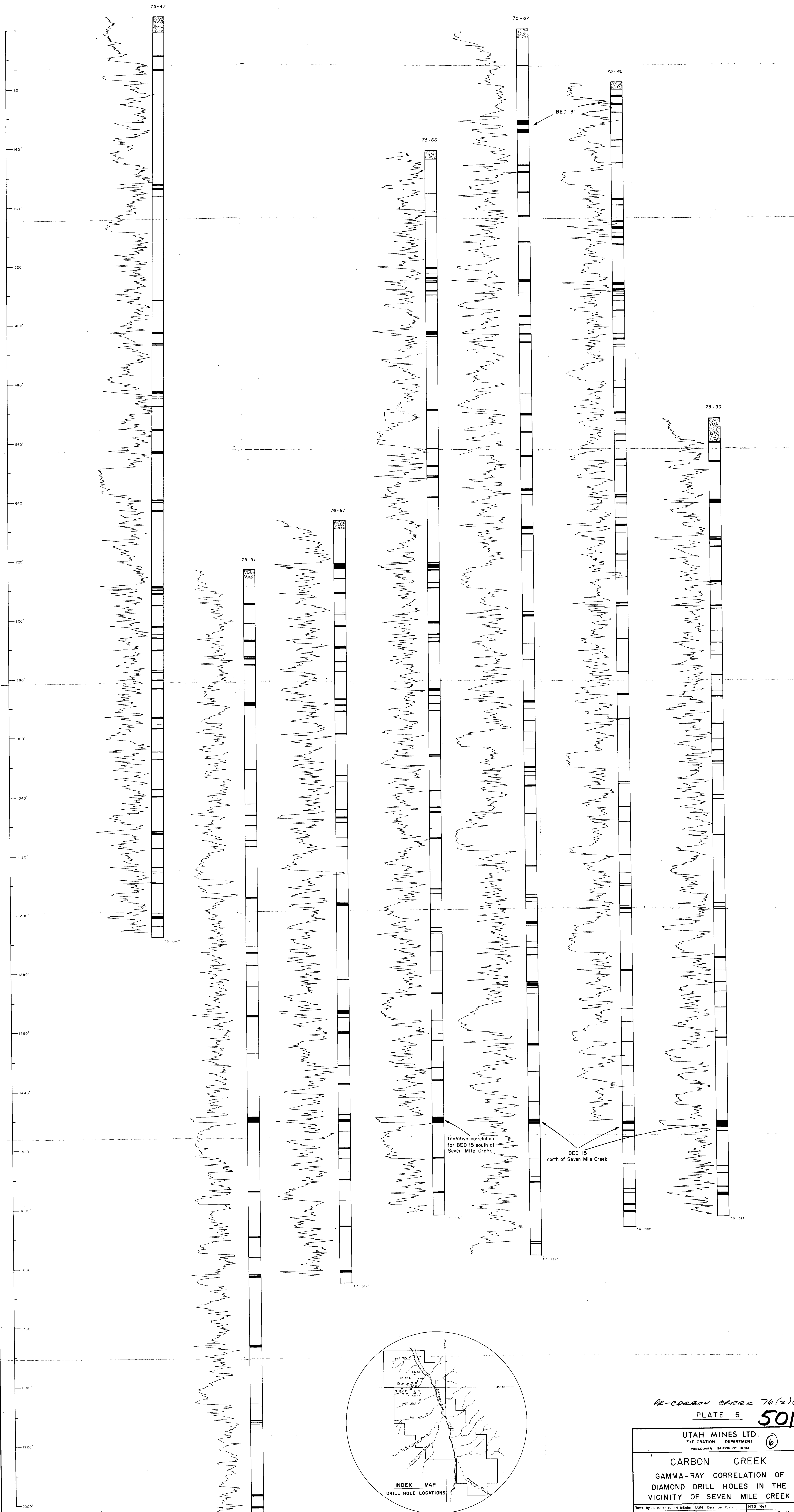


75-CARBON CREEK 76(2)C.
PLATE 5 **501**^{13/4}

UTAH MINES LTD.		
EXPLORATION DEPARTMENT		
VANCOUVER BRITISH COLUMBIA		
(5)		
CARBON CREEK		
GAMMA-RAY CORRELATION OF DIAMOND DRILL HOLES IMMEDIATELY SOUTH OF SEVEN MILE CREEK		
Work by: J. D. S. J. J.	Date: December 1970	NTS Ref:
Drawn by: J. D. S. J. J.	Revised:	Vertical Scale: 1" = 40'
SCALE IN FEET		

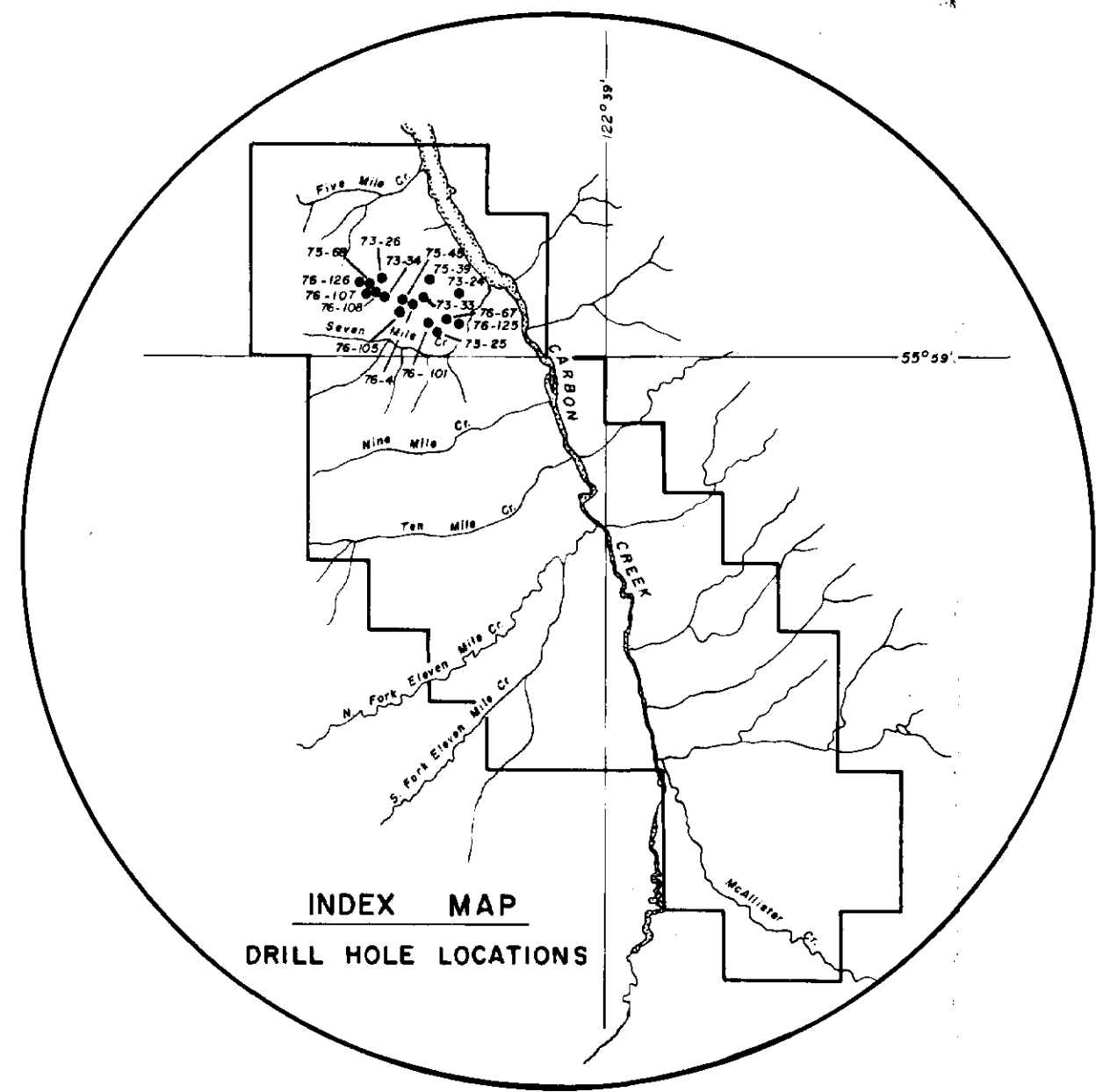
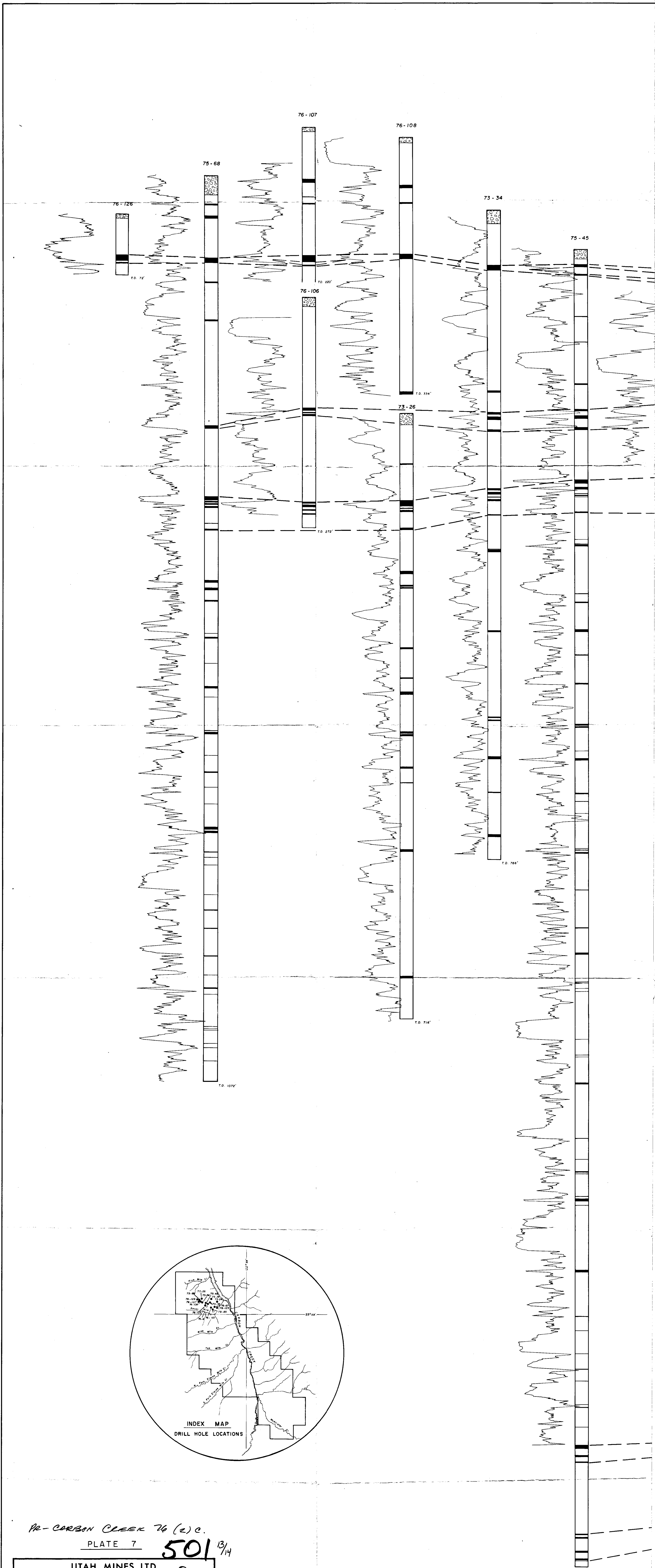
SOUTH OF SEVEN MILE CREEK

NORTH OF SEVEN MILE CREEK



RE-CARBON CREEK 76(2)C.
 PLATE 6 **501**^{3/4}

UTAH MINES LTD. EXPLORATION DEPARTMENT VANCOUVER BRITISH COLUMBIA	
CARBON CREEK	
GAMMA-RAY CORRELATION OF DIAMOND DRILL HOLES IN THE VICINITY OF SEVEN MILE CREEK	
Work by: S. F. R. & D. M. (inches)	Date: December 1975
Drawn by: T. Cross	Revised: Vertical Scale - 1" = 40'
SCALE IN FEET	

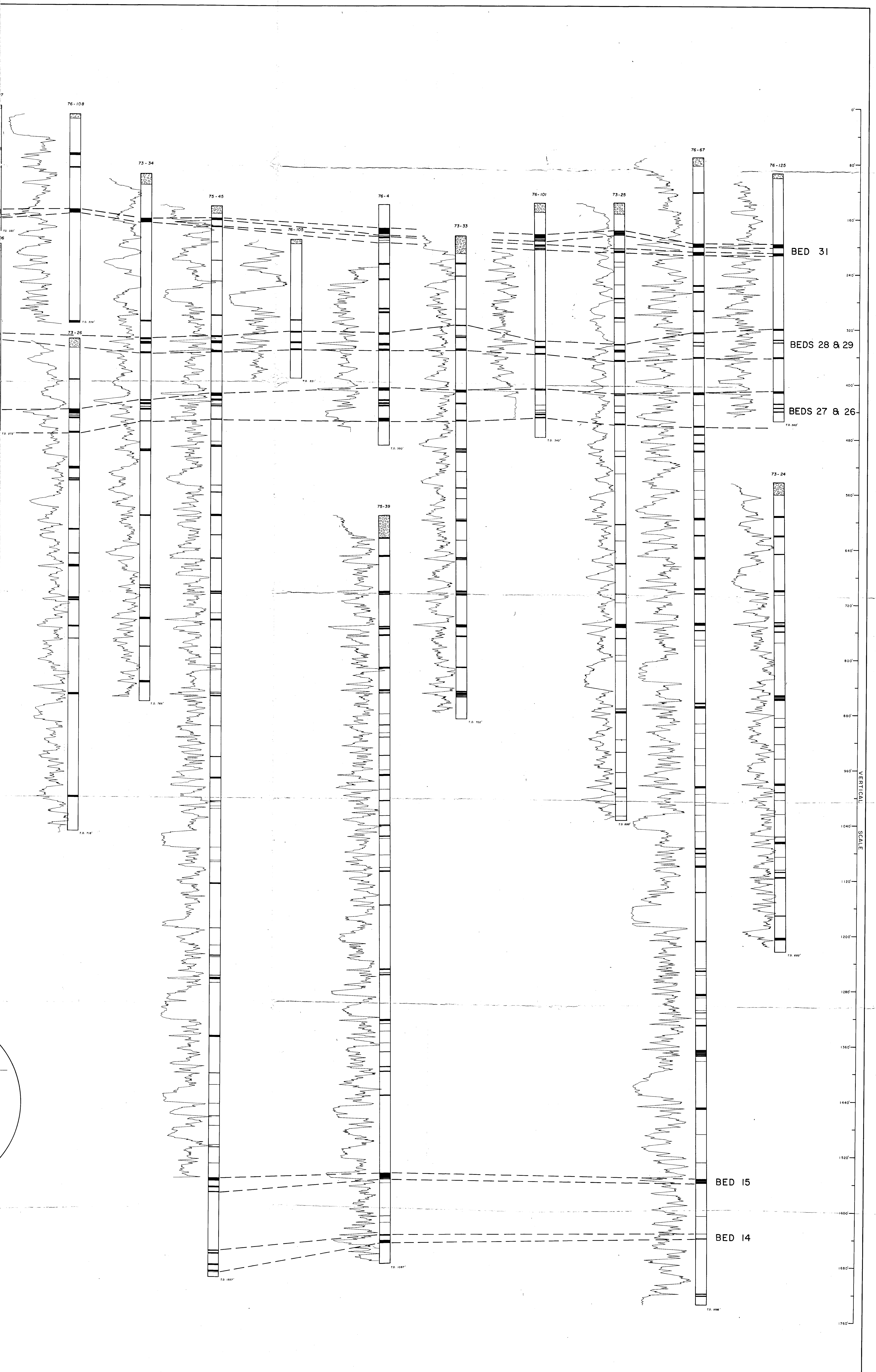


PR-CARBON CREEK 76 (2) C.

PLATE 7

501^{13/14}

UTAH MINES LTD. EXPLORATION DEPARTMENT VANCOUVER BRITISH COLUMBIA		
CARBON CREEK		
GAMMA-RAY CORRELATION OF DIAMOND DRILL HOLES & ROTARY DRILL HOLES IN THE VICINITY OF SEVEN MILE CREEK		
Work by: D. H. Hertzberg & R. Karst	Date: December 1976	NTS Ref.
Drawn by: T. Drews	Revised:	Vertical Scale - 1" = 40'
SCALE IN FEET		



PR-CARBON CR. 76 (2)

OPEN FILE
MAPS
UTAH MINES LTD. 1976

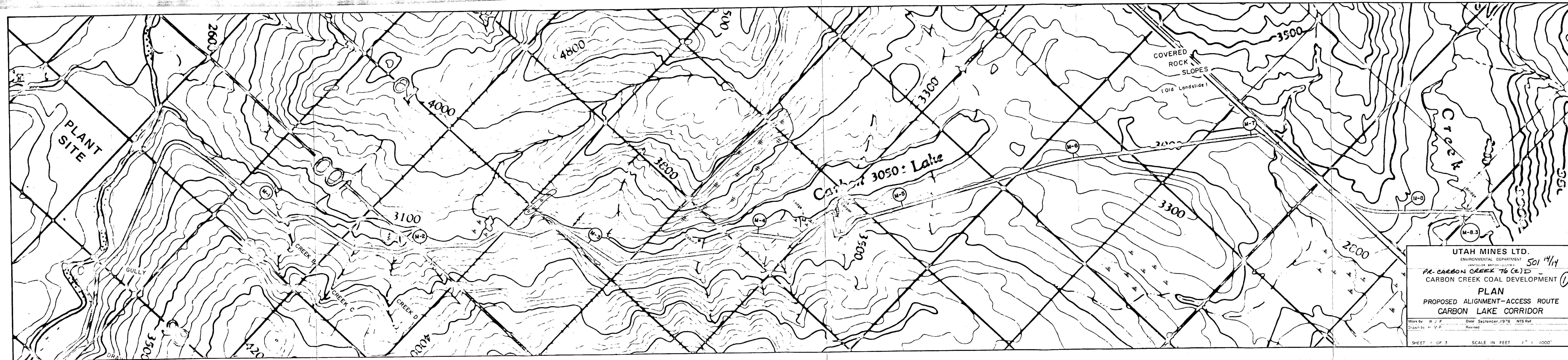
501 14/14

OPEN FILE

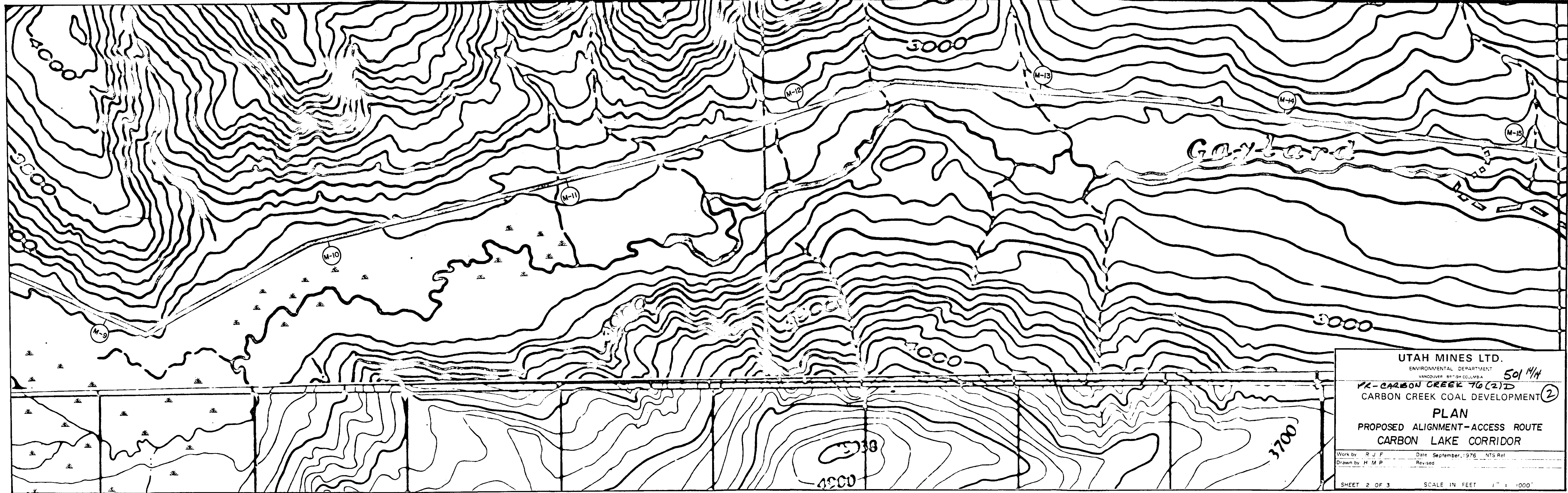
00501

ROUTE PROJECTIONS - CARBON LAKE ROUTE

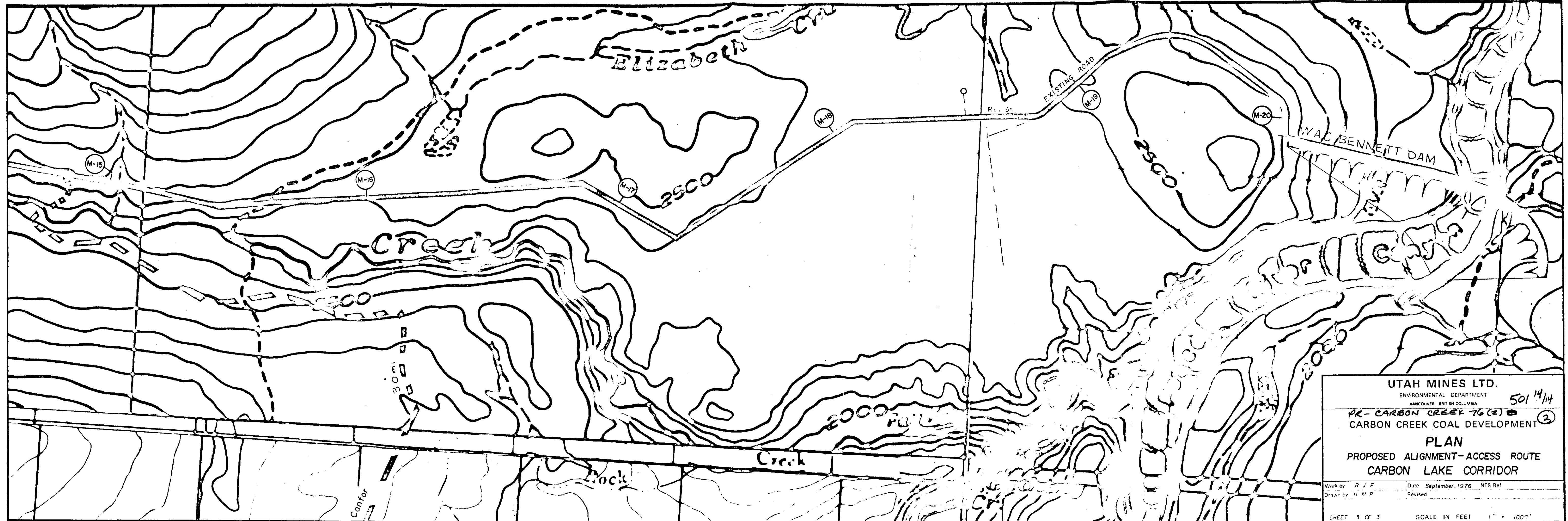
Plates 1.0, 2.0, 3.0



UTAH MINES LTD.
 ENVIRONMENTAL DEPARTMENT
 VANCOUVER BRANCH 501 14/14
 PR-CARBON CREEK TO (2) D
 CARBON CREEK COAL DEVELOPMENT (1)
PLAN
 PROPOSED ALIGNMENT-ACCESS ROUTE
 CARBON LAKE CORRIDOR
 Work by R J F Date September, 1976 NTS Ref
 Drawn by M P Revised
 SHEET 1 OF 3 SCALE IN FEET 1" = 1000'



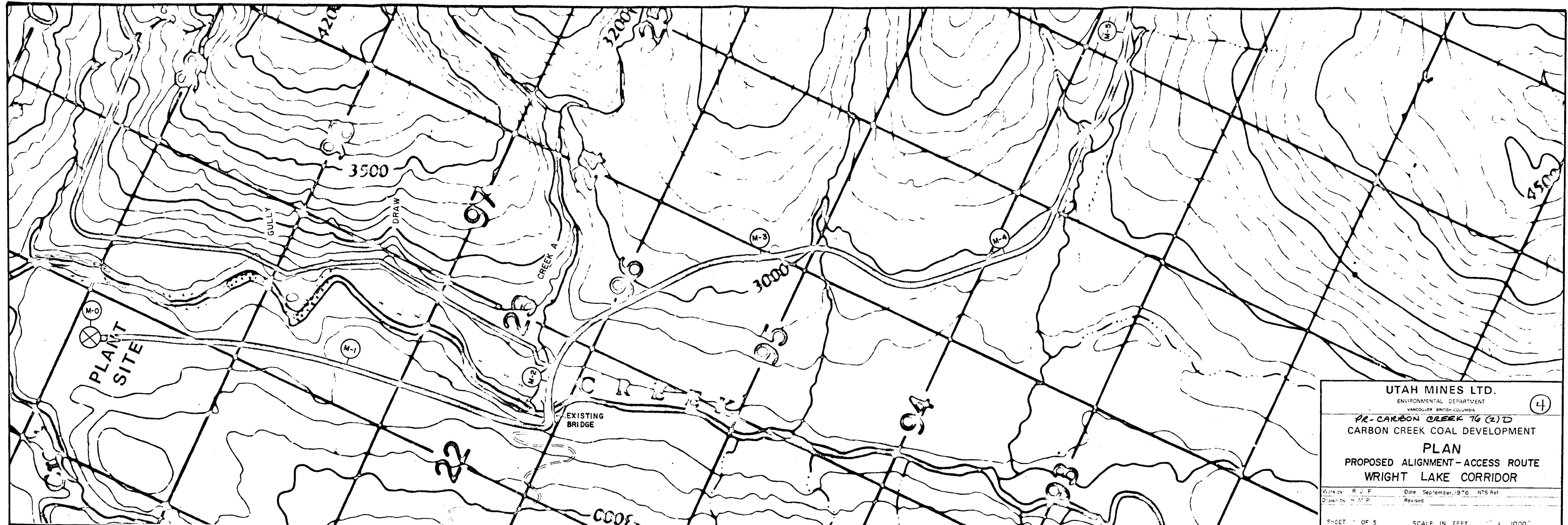
UTAH MINES LTD.
 ENVIRONMENTAL DEPARTMENT
 VANCOUVER BRITISH COLUMBIA 501 1/4
 PK-CARBON CREEK 70(2)D
 CARBON CREEK COAL DEVELOPMENT (2)
PLAN
 PROPOSED ALIGNMENT-ACCESS ROUTE
 CARBON LAKE CORRIDOR
 Work by R J F Date September, 1976 NTS Ref
 Drawn by H M P Revised
 SHEET 2 OF 3 SCALE IN FEET 1" = 1000'



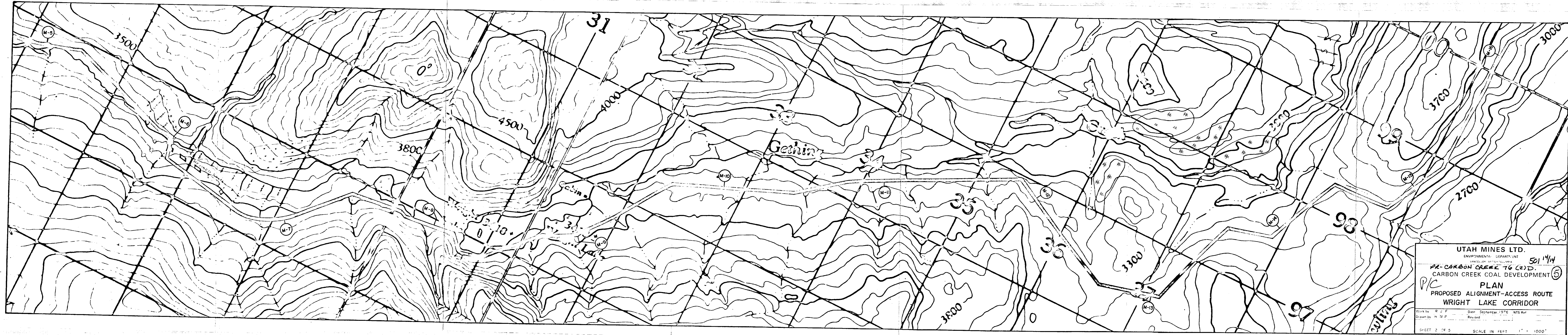
UTAH MINES LTD.	
ENVIRONMENTAL DEPARTMENT	
VANCOUVER BRITISH COLUMBIA	
PR-CARBON CREEK 76 (2)	501 14/14
CARBON CREEK COAL DEVELOPMENT	③
PLAN	
PROPOSED ALIGNMENT-ACCESS ROUTE	
CARBON LAKE CORRIDOR	
Work by R J F	Date September, 1976 NTS Ref
Drawn by H M P	Revised
SHEET 3 OF 3	SCALE IN FEET 1" = 1000'

ROUTE PROJECTIONS - WRIGHT LAKE ROUTE

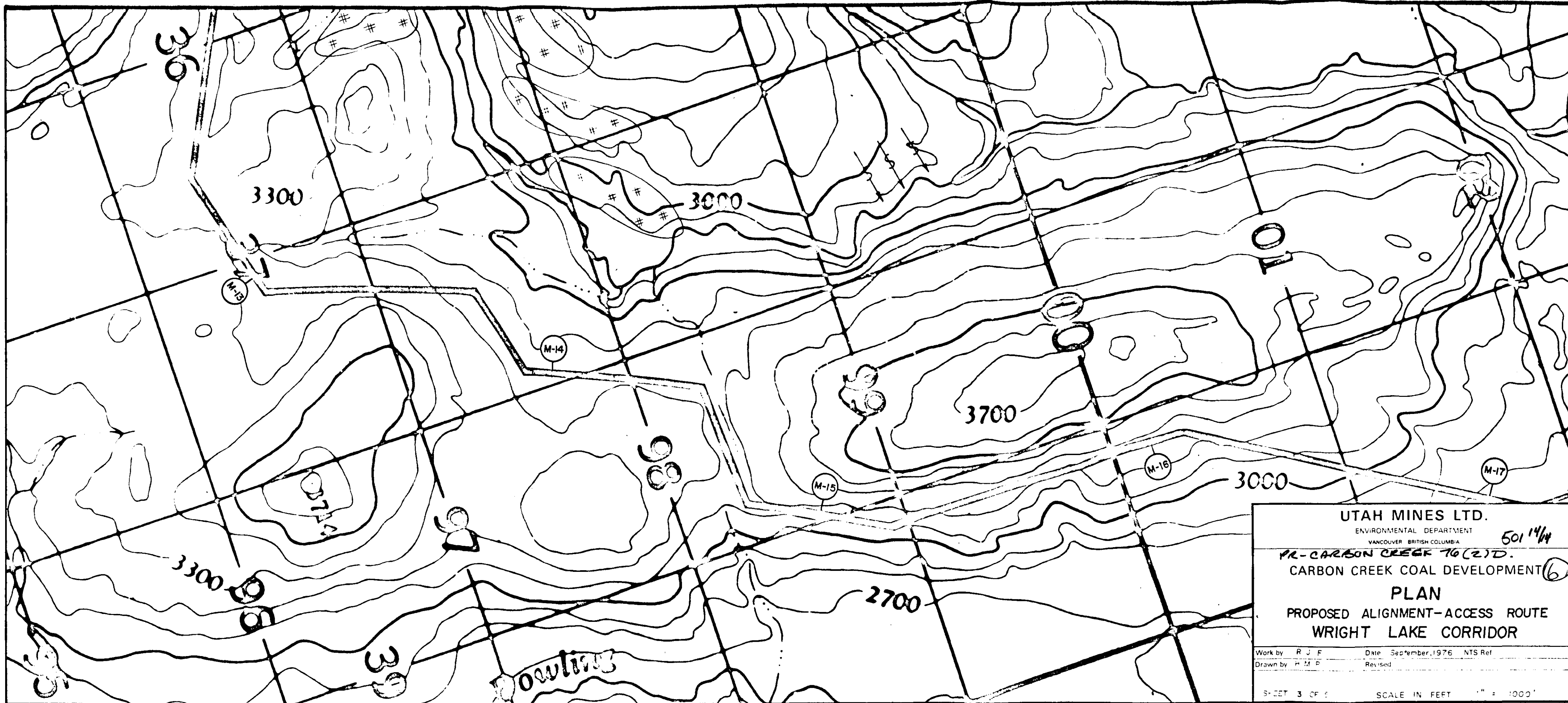
Plates 4.0, 5.0, 6.0, 7.0, 8.0



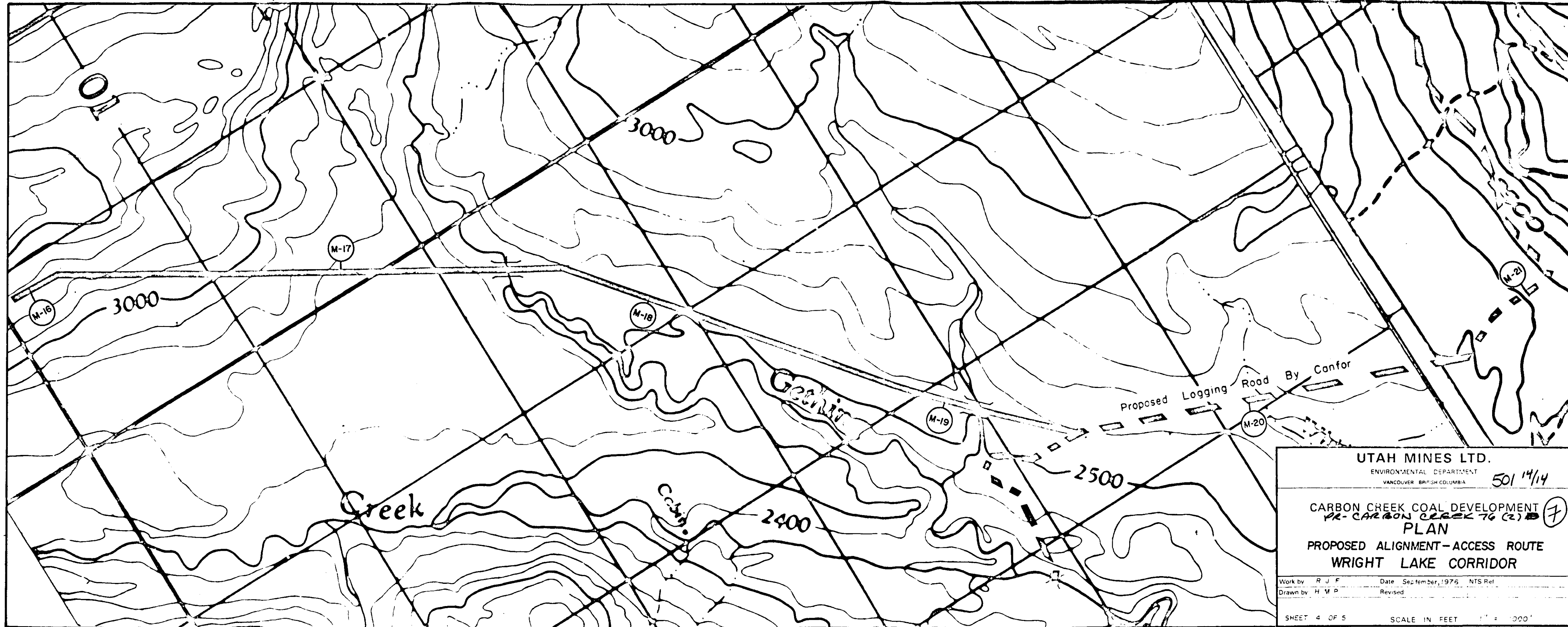
UTAH MINES LTD. ENVIRONMENTAL DEPARTMENT VANCOUVER BRITISH COLUMBIA		④
PR-CARBON CREEK 76 (2) D CARBON CREEK COAL DEVELOPMENT		
PLAN PROPOSED ALIGNMENT-ACCESS ROUTE WRIGHT LAKE CORRIDOR		
Work by R J F Drawn by H M P	Date September, 1976 NTS Ref Revised	
SHEET 1 OF 5		SCALE IN FEET 1" = 1000'



UTAH MINES LTD.	
ENVIRONMENTAL DEPARTMENT	501 14/14
PROJECT: CARBON CREEK TO (2) D.	5
PR-CARBON CREEK COAL DEVELOPMENT	
PLAN	
PROPOSED ALIGNMENT-ACCESS ROUTE	
WRIGHT LAKE CORRIDOR	
Work by: R. J. F.	Date: September, 1976 NTS Ref:
Drawn by: H. M. P.	Revised:
SHEET 2 OF 5	SCALE IN FEET 1" = 1000'



UTAH MINES LTD.
 ENVIRONMENTAL DEPARTMENT
 VANCOUVER BRITISH COLUMBIA 501 14/4
 PR-CARBON CREEK 76(2)D.
 CARBON CREEK COAL DEVELOPMENT (6)
PLAN
 PROPOSED ALIGNMENT-ACCESS ROUTE
 WRIGHT LAKE CORRIDOR
 Work by R J F Date September, 1976 NTS Ref
 Drawn by H M P Revised
 SHEET 3 OF 5 SCALE IN FEET 1" = 1000'



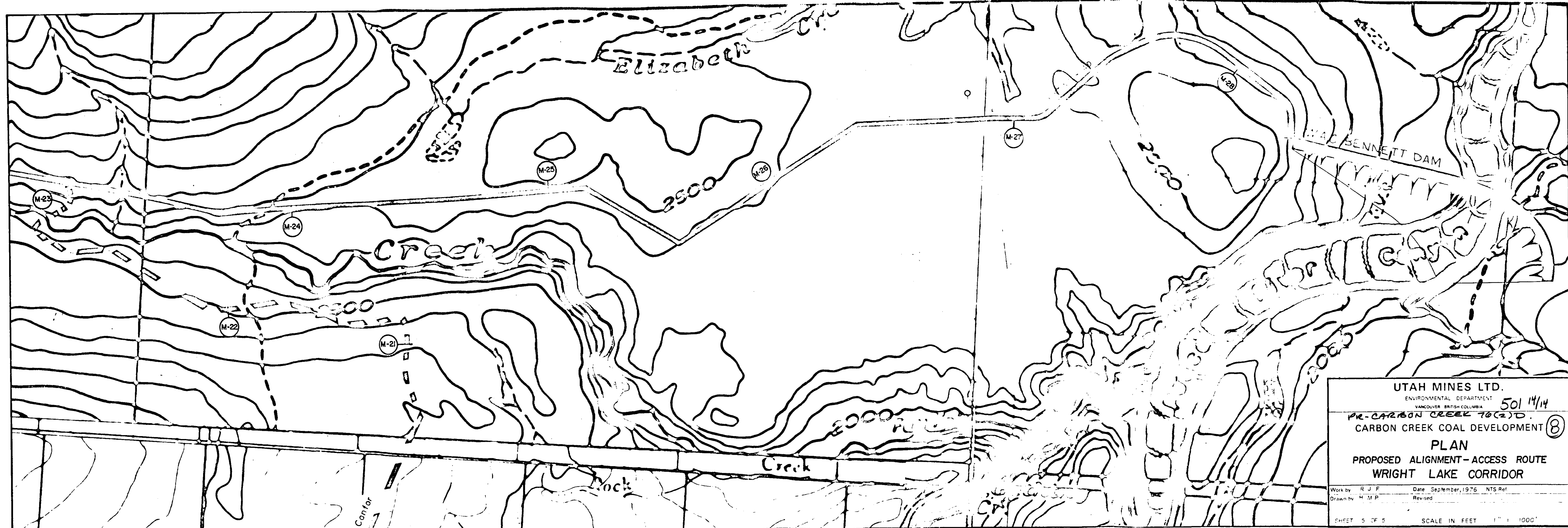
UTAH MINES LTD.
 ENVIRONMENTAL DEPARTMENT
 VANCOUVER BRITISH COLUMBIA 501 14/14

CARBON CREEK COAL DEVELOPMENT
 PR-CARBON CREEK 76 (2) 7

PLAN
 PROPOSED ALIGNMENT-ACCESS ROUTE
 WRIGHT LAKE CORRIDOR

Work by R J F Date September, 1976 NTS Ref
 Drawn by H M P Revised

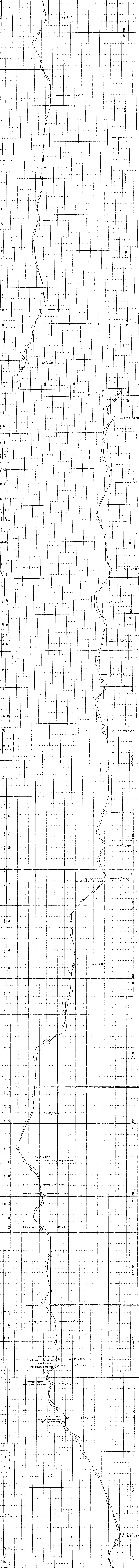
SHEET 4 OF 5 SCALE IN FEET 1" = 1000'



UTAH MINES LTD.	
ENVIRONMENTAL DEPARTMENT	501 14/14
VANCOUVER BRITISH COLUMBIA	
PR-CARBON CREEK 70(2)D.	
CARBON CREEK COAL DEVELOPMENT ⑧	
PLAN	
PROPOSED ALIGNMENT - ACCESS ROUTE	
WRIGHT LAKE CORRIDOR	
Work by R J F	Date September, 1976 NTS Ref
Drawn by H M P	Revised
SHEET 5 OF 5	SCALE IN FEET 1" = 1000'

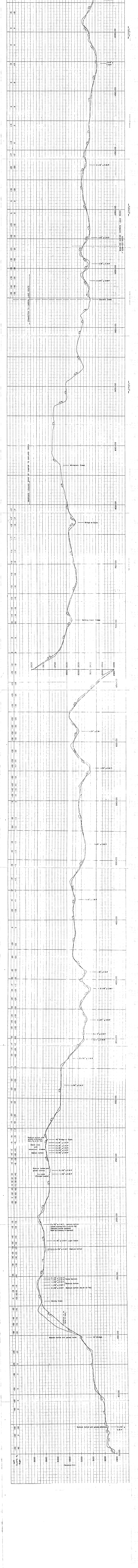
ROUTE PROFILE - CARBON LAKE ROUTE

Plate 9.0



ROUTE PROFILE - WRIGHT LAKE ROUTE

Plate 10.0



UTAH MINES LTD. ENVIRONMENTAL DIVISION 50111H CARBON CREEK COAL DEVELOPMENT PROFILE OF PROPOSED WRIGHT LAKE ACCESS ROAD DATE: 7.31.88 DRAWN: J.S.L. CHECKED: J.S.L. DATE: SEPT 1976 HORIZ: 1" = 100' SCALE: IN FEET VERY

MAP OF PROPOSED AND ALTERNATE
ACCESS ROADS

Plate 11.0

WILLISTON

RESERVOIR

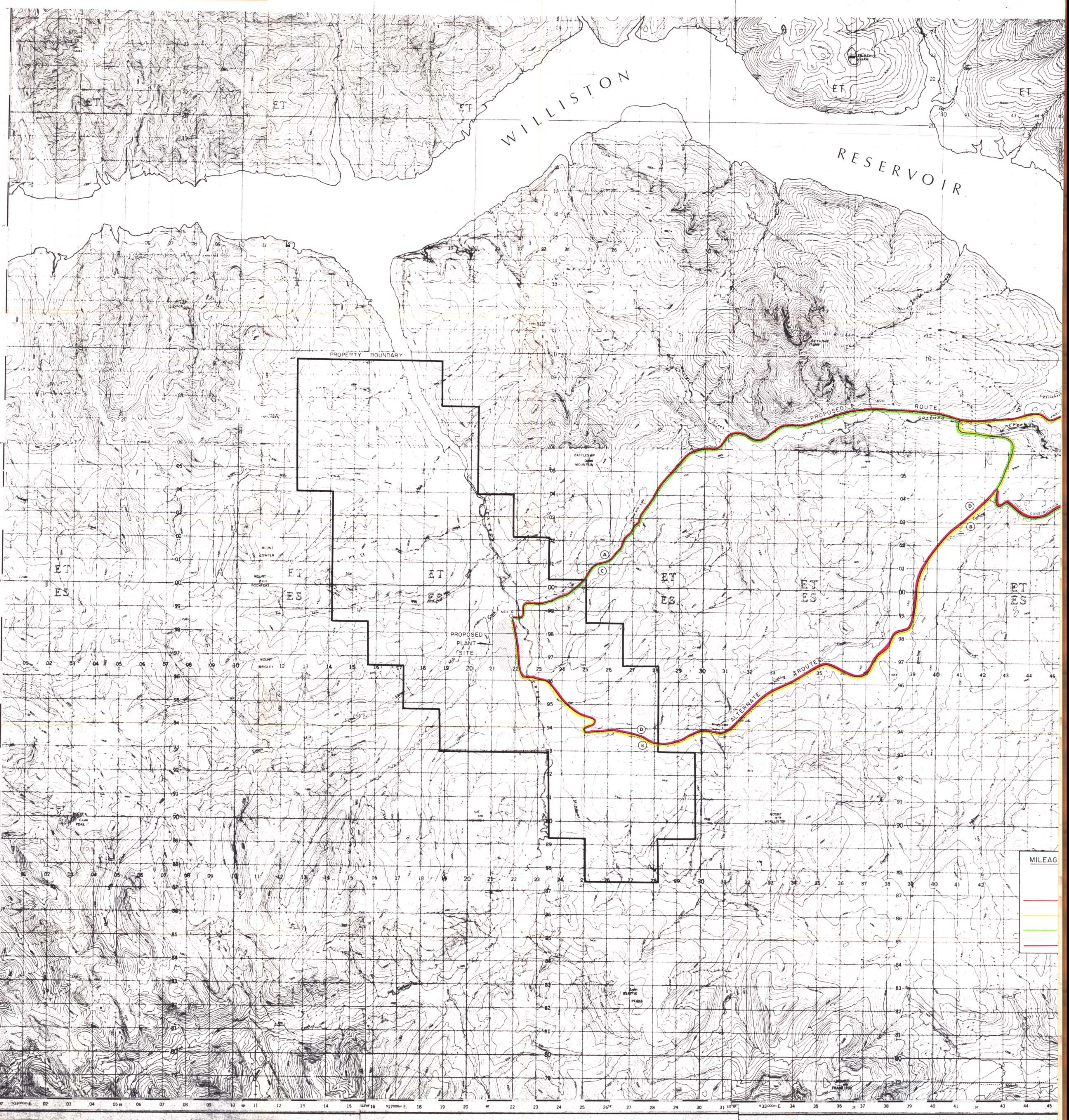
PROPERTY BOUNDARY

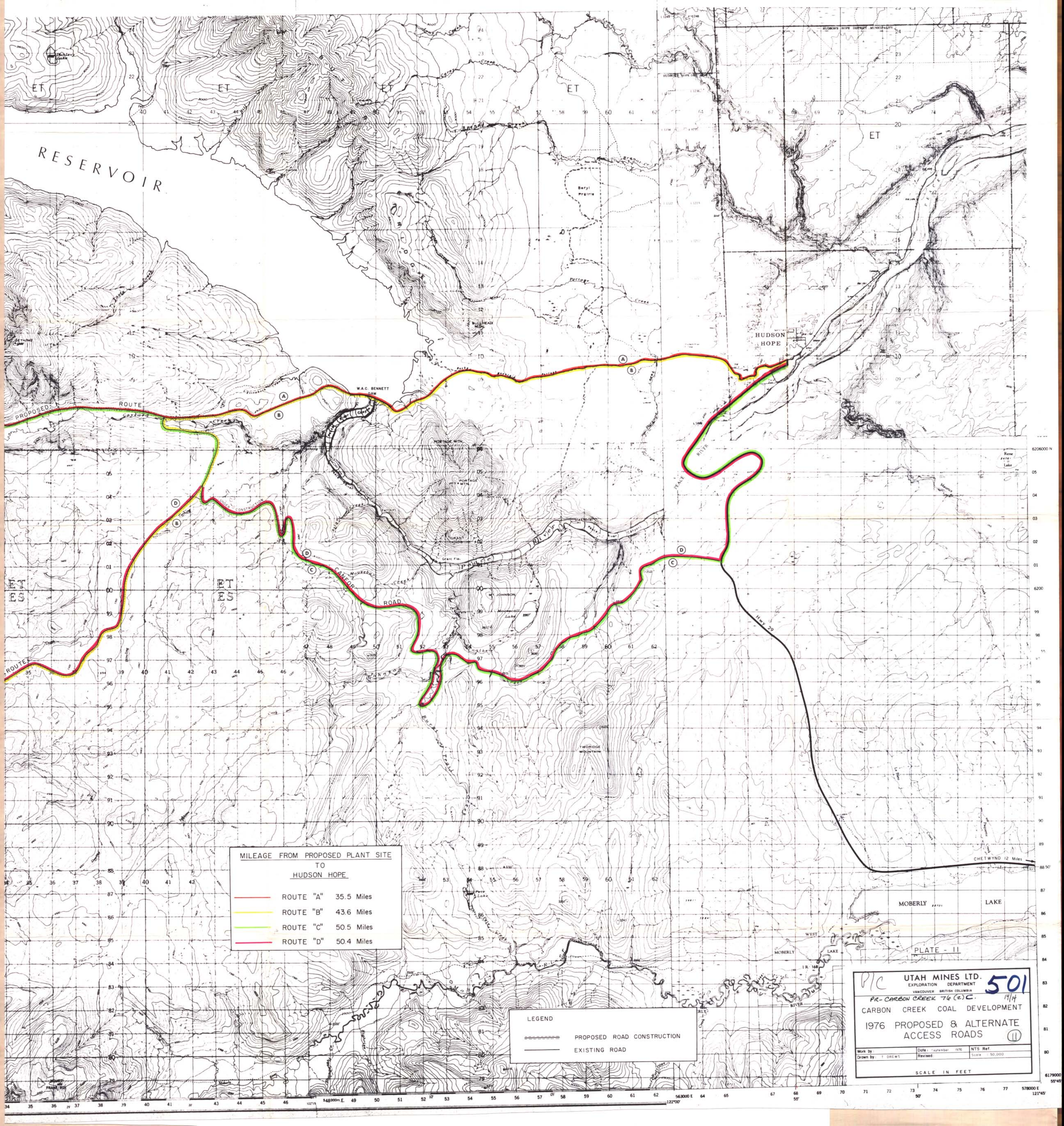
PROPOSED ROUTE

PROPOSED PLANT SITE

ALTERNATE ROUTE

MILEAG





MILEAGE FROM PROPOSED PLANT SITE TO HUDSON HOPE	
— (Red line) —	ROUTE "A" 35.5 Miles
— (Yellow line) —	ROUTE "B" 43.6 Miles
— (Green line) —	ROUTE "C" 50.5 Miles
— (Magenta line) —	ROUTE "D" 50.4 Miles

LEGEND	
====	PROPOSED ROAD CONSTRUCTION
—	EXISTING ROAD

PIC UTAH MINES LTD. 501
 EXPLORATION DEPARTMENT
 VANCOUVER BRITISH COLUMBIA
 PR-CARBON CREEK 76 (2) C.
 CARBON CREEK COAL DEVELOPMENT
 1976 PROPOSED & ALTERNATE ACCESS ROADS
 Work by: T. DREWS Date: September 1976 NTS Ref: 14/4
 Drawn by: T. DREWS Revised: Scale: 1:50,000
 SCALE IN FEET

PLATE - II

MOBERLY LAKE

WEST LAKE

MOBERLY LAKE

IR 168

RIVER

6206000 N

05

04

03

02

01

00

99

98

97

96

95

94

93

92

91

90

89

88

87

86

85

84

83

82

81

80

6170000

59°45'

578000 E

121°45'