

PR. CARBON CREEK
76(3)C-2.
DRILL & CORE
Logs
(BOOK C-3).
2/14

OPEN FILE

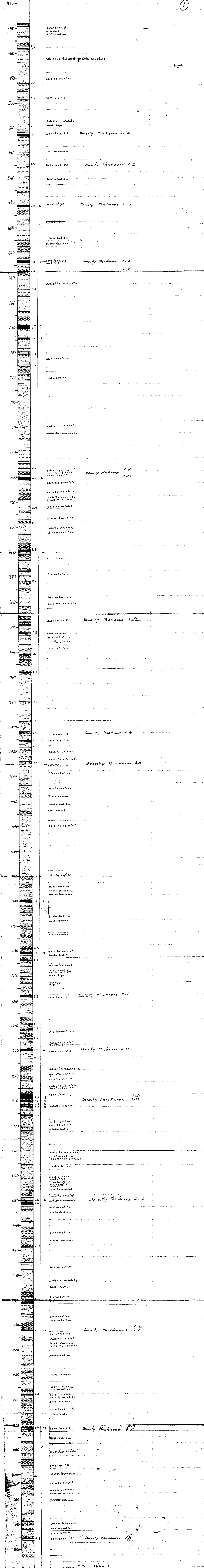
GEOLOGICAL BRANCH
ASSESSMENT REPORT

00 501

PR - CARBON CR. 76(3)C-2
UTAH MINES LTD.
DRILL & CORE LOG

HOLE NO. DDH 76-67
 LOG BY: J. Waywitta
 DATE: Sept 17/76
 ELEV. 5190
 N. 361, 225 N
 E. 578, 50 E
 HOLE SIZE: HQ (2 1/2")
 AIR WATER
 TO 16660 PD 16660
 PROJECT: Carbon Creek
 LEASE:
 REC: T R

REC. DEPTH	STOP LOG	THICK	SCALE	LITHOLOGY
------------	----------	-------	-------	-----------



PR-CARBON CR-76(3)C-2

UTAH MINES LTD. DRILL & CORE LOG

HOLE NO. 75-67

HOLE NO. 75-67

LOG BY: U. Malachowski

ELEV: 3180

HOLE SIZE: H9 (2 1/2")

PROJECT: Carbon Creek

DATE: Aug 26/75

N: 361,725

AIR WATER

LEASE: 327

E: 57,850

T.D. 436' P.D. _____

SEC. _____ T. _____ R. _____

# REC	DEPTH	STRIP LOG	THICK	SAMPLE NO.	LITHOLOGY
-------	-------	-----------	-------	------------	-----------

501

(2) 2/14

# REC	DEPTH	STRIP LOG	THICK	SAMPLE NO.	LITHOLOGY
	0				
	20				
	30		0.6		COAL
	40				
	50		1.0		COAL (DENSITY THICKNESS 1.8')
	60				
	80				
	100				
	120				
	130		57	#1	COAL
	140		33	#2	COAL (DENSITY THICKNESS 4.2')
	160				
	180				
	190		1.7		COAL
	200		1.6	#3	COAL
	205		1.5		COAL (DENSITY THICKNESS IS NIL)
	220				
	230		1.8		COAL
	240				
	260		2.7	#4	COAL (DENSITY THICKNESS 2.0')
	280		1.0		very muddy COAL (DENSITY INDICATES 2.0' OF BONE COAL)
	300		2.2	#5	COAL (DENSITY THICKNESS 1.8')
	320				pelecypod debris
	340				
	350		3.5	#6	COAL (DENSITY THICKNESS 3.0')
	360				
	370		0.5		COAL (DENSITY THICKNESS 1.5') (DENSITY INDICATES BONE COALS)
	380				
	400		2.6	#7	COAL (DENSITY THICKNESS 2.0')
	420		1.3		COAL
	430		1.1		COAL
	440		2.1/2.3	#8	COAL (DENSITY THICKNESS 1.5')

HOLE NO. _____

From 76(3)C-2
Borehole

PR. CARBON CR. - 76(3)C-2

UTAH MINES LTD.
DRILL & CORE LOG

HOLE NO. 75-68
LOG BY: U. Malachowski
DATE: Aug 28/75

ELEV: 4055
N: 365 075
E: 51,450

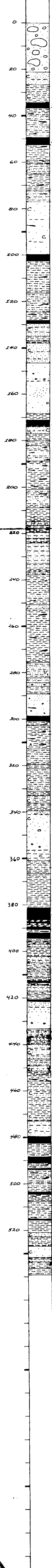
HOLE SIZE: HQ (2 1/2")
AIR WATER
T.D. 539' P.D.

HOLE NO. 75-68
PROJECT: Carbon Creek
LEASE: 3491
SEC. T. R.

# REC.	DEPTH	STRIP LOG	THICK	SAMPLE REC.
--------	-------	-----------	-------	-------------

LITHOLOGY

③ 501
2/14



24 #1 COAL (DENSITY THICKNESS 1.8)

23 #2 COAL (DENSITY THICKNESS 3.0)

29 #3 COAL (DENSITY THICKNESS 5.6')

1.2 COAL

2.6 COAL

23 #4 COAL (DENSITY THICKNESS 3.3')

5.3 }
0.8 } #5 COAL (DENSITY ADJUSTMENT - SEE DENSITY LOG)
1.0 }
2.4 } COAL

0.7 COAL

1.2 COAL

2.6 #6 COAL (DENSITY THICKNESS 2.0')

2.6 #7 COAL (DENSITY THICKNESS 2.0')

0.5 COAL

1.2 COAL

0.5 COAL

PR- CALSON CR 76 (3)C-2
 UTAH MINES LTD.
 DRILL & CORE LOG

HOLE NO. DDH 76-68

HOLE NO. DDH 76-68

LOG BY: J. Woywitka

ELEV: 4055

HOLE SIZE HG (2 1/2")

PROJECT: Carbon Creek

DATE: Sept 7, 1976

N: 365,075

WATER

LEASE:

E: 51,450

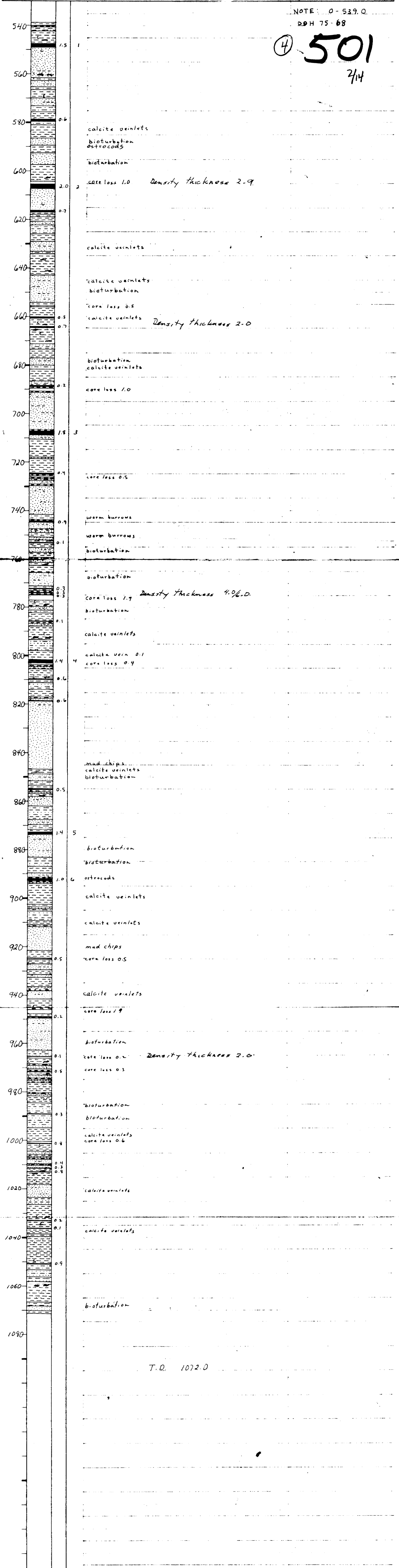
1072.0

SEC T R

# REC	DEPTH	STRIP LOG	THICK	SAMPLE NO	LITHOLOGY
-------	-------	-----------	-------	-----------	-----------

NOTE: 0-539.0
 DDH 75-68

④ 501
 2/14



PR-CARBON CR-76(3)0-2
UTAH MINES LTD.
DRILL & CORE LOG

HOLE NO. 76-71 HOLE NO. 76-71
 BY J. Lowry + E. Hetherington PROJECT Carbon Creek
 DATE July 2, 1976 LEASE Lot 325

ELEV ± 3150 HOLE SIZE HQ
 N 251650 N AIR WATER
 E X 63,800 E TD 946.0' PD 932.0' SEC T R

LITHOLOGY

DEPTH	THICK	SAMPLE NO.	DESCRIPTION
0			overburden
20			pebble conglomerate interbedding
40			core loss 0.4'
60	1.5'	1	Density thickness 2.0
80	0.3'		calcite veinlet
90			core loss 1.3' Density thickness 3.5
120			calcite veinlet
130			small cross beds
140	4.0'	2	Density thickness 4.3
145	4.5'	3	core loss 1.6' 5.0
200	1/4'	4	154-157 dirty coal
240	1.2'	5	
245	2.0'	6	
250	0.5'		
280	4.3'	7	core loss 1.8' Density thickness 5.0
300	2.0'	8	
305	3.0'	9	
340			332.2 - 332.6 coal interbed
400	0.7'		
420	0.9'		core loss 1.8'
440	0.2'		core loss 1.2'
450			calcite veinlet at 441.4'
460	1.0'	10	
520	0.8'		
600	0.9'		Density thickness 2.0
620	3.2'	11	
640	0.8'		
645	1.8'	12	core loss 0.9'
820			core loss 0.5'
840			worm burrows
900	0.5'	13	Density thickness 2.0
910	3.0'	14	
940			7.0' 946.0'

501

5

2/4

UTAH MINES LTD.
DRILL & CORE LOG

HOLE NO. DDH 76-72

HOLE NO. DDH 76-72

LOG BY J. Waywitske

ELEV 3280

HOLE SIZE 4 1/2 3 1/2

PROJECT Carbon Creek

DATE July 10/76

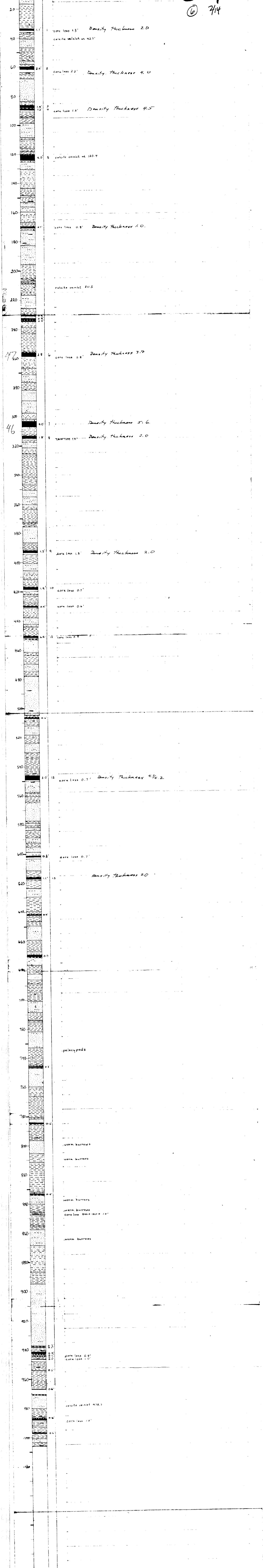
N 34.2 S 89.8 W

AIR WATER

LEASE 228-122

E 16.3, 18.8 B TD 1116 PD 1123

SEC 7 T 12 R



501
⑥ 714

47

46

Pt. CARBON 76 (B) C-2
UTAH MINES LTD.
DRILL & CORE LOG

HOLE NO. DDH 76-73

HOLE NO. DDH 76-73

LOG BY: J. Waywikka

ELEV: 3980

HOLE SIZE: 4 1/2" (2 1/2")

PROJECT: Carbon Creek

DATE: July 18, 1976

N 339,000

AIR WATER

LEASE: 3474

E: 60 STD

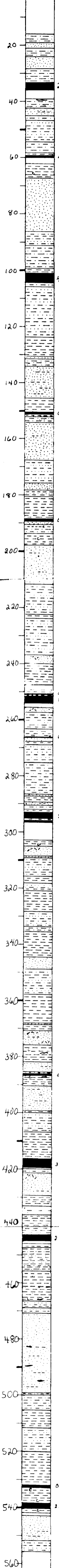
T.D. 556.0 P.D. 553.0

SEC. T. R.

# REC	DEPTH	STRIP LOG	THICK	SAMPLE NO.	LITHOLOGY
-------	-------	-----------	-------	------------	-----------

501

① 74



overburden to 16.0

29 1 core loss 3.4' Density thickness 5.0/6.5

1.0 2 core loss 2.9' Density thickness 4.5/5.5

4.2 3

dip 20°

dip 13°

0.9 - marcasite disseminated throughout

dip 18.5°

0.9 disseminated marcasite

0.6 1.9 4 core loss 1.7' Density thickness 4.5

0.5

2.1 5 core loss 6.7' Density thickness 6.7/7.7

NOTE: Core loss may not all be after 2021. Numbers in box were mixed up and all core in box very broken

dip 18°

dip 20°

dip 12°

worm burrows disseminated marcasite

0.8

dip 10°

3.0 6 core loss 1.0' Density thickness 3.8

2.3 7 core loss 0.7'

horizontal bedding

worm burrows

worm burrows

dip 12° worm burrows

0.7 Density thickness 2.0

2.2 8 core loss 2.0' 4.0

worm burrows crossbeds

T.D. 556.0'

10-CARBON CR 76 (3)C-2
 UTAH MINES LTD.
 DRILL & CORE LOG

HOLE NO. DDH 76-74

HOLE NO. DDH 76-74

LOG BY: J. Waywika
 DATE: July 25 76

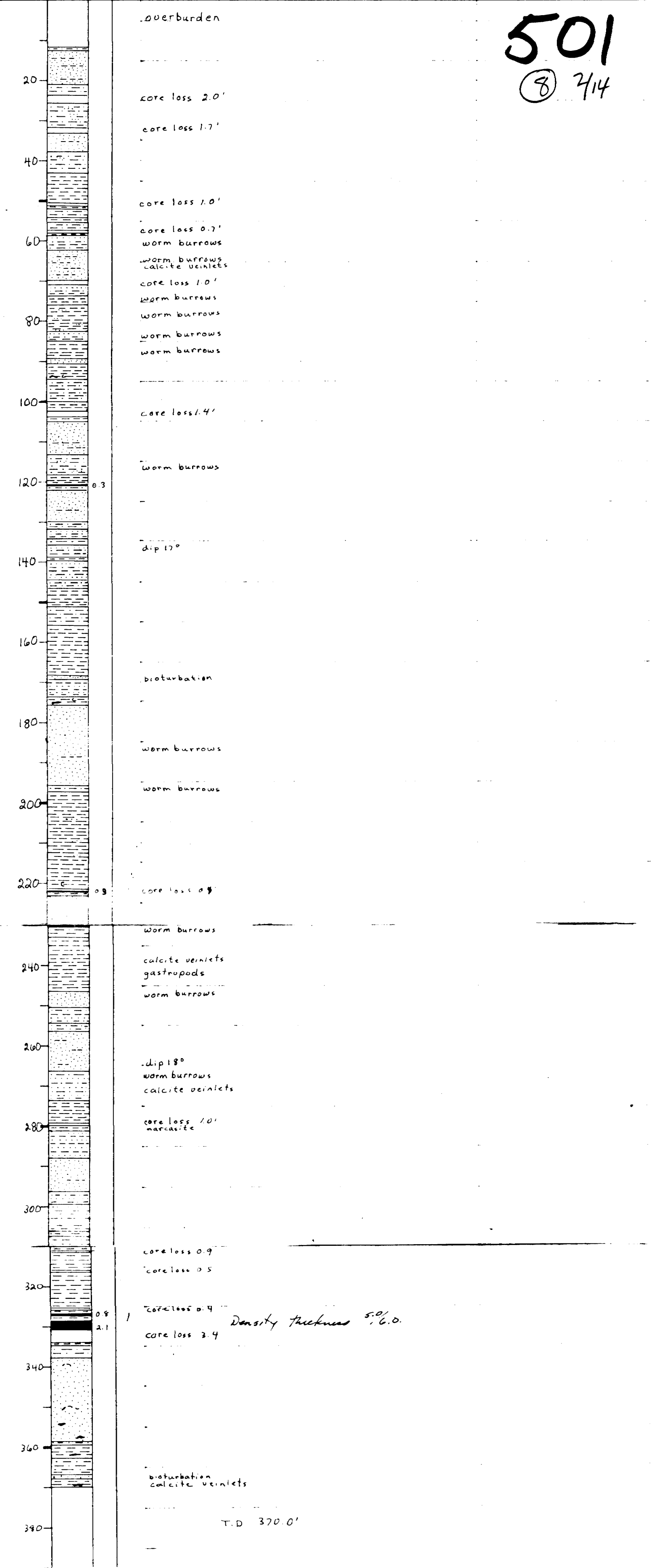
ELEV: 4475
 N. 338420
 E. 56250

HOLE SIZE: 4 1/2"
 AIR WATER
 T.D. 3100 P.D. 3170

PROJECT: Carbon Creek
 LEASE: C. 34.5
 SEC. T. R.

% REC	DEPTH	STRIP LOG	THICK	SAMPLE NO.	LITHOLOGY
-------	-------	-----------	-------	------------	-----------

501
 (8) 714



PR-CARBON CR 76 (3) C-2
 UTAH MINES LTD.
 DRILL & CORE LOG

HOLE NO. DDH 76-75

HOLE NO. DDH 76-75

LOG BY: J. Woywitka
 DATE: July 28/74

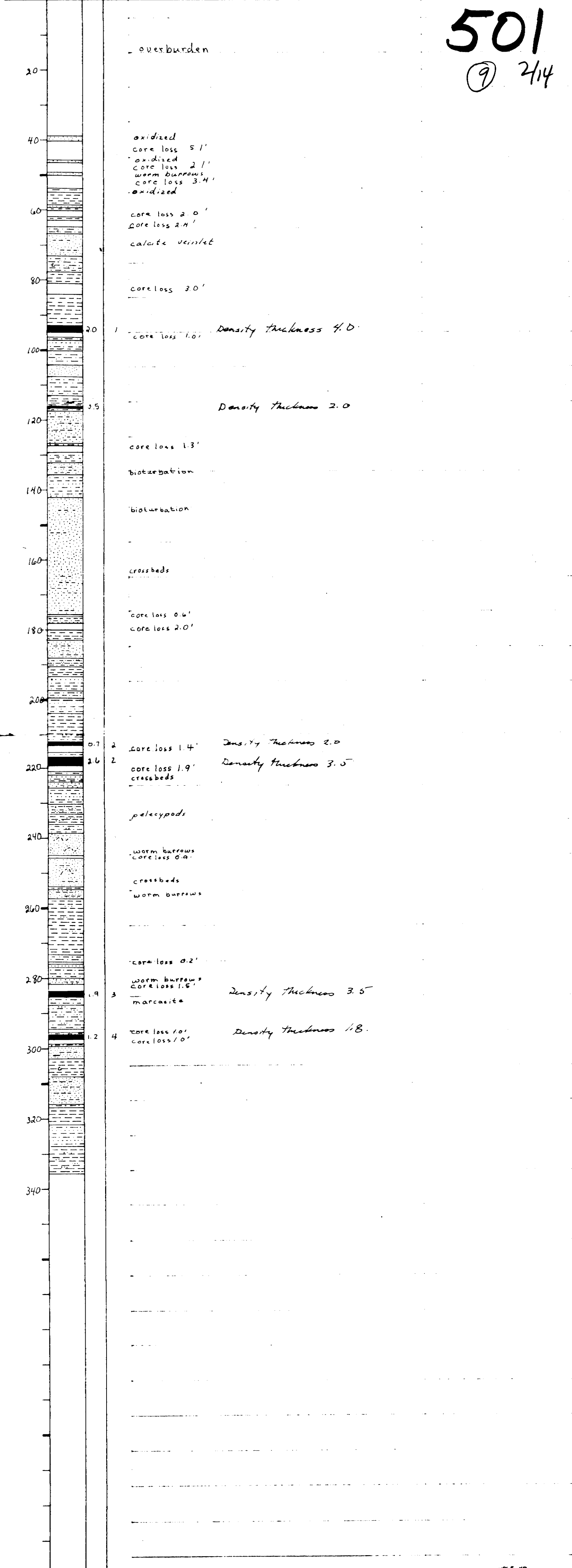
ELEV: 3621
 N 340450
 E: 59400

HOLE SIZE: 4 1/2
 AIR WATER
 T.D. 336.0 PD 335

PROJECT: Carbon Creek
 LEASE: Lot 325
 SEC T R

% REC	DEPTH	STRIP LOG	THICK	SAMPLE NO.	LITHOLOGY
-------	-------	-----------	-------	------------	-----------

501
 (9) 2/14



M-CARBON CR. 76 (3) 0-2
**UTAH MINES LTD.
 DRILL & CORE LOG**

HOLE NO. DDH 76-76

HOLE NO. DDH 76-76

LOG BY: J. Waywika

ELEV: 3550

HOLE SIZE: HQ

PROJECT: Carbon Creek

DATE: July 31/76

N: 241, 605

AIR WATER

LEASE: _____

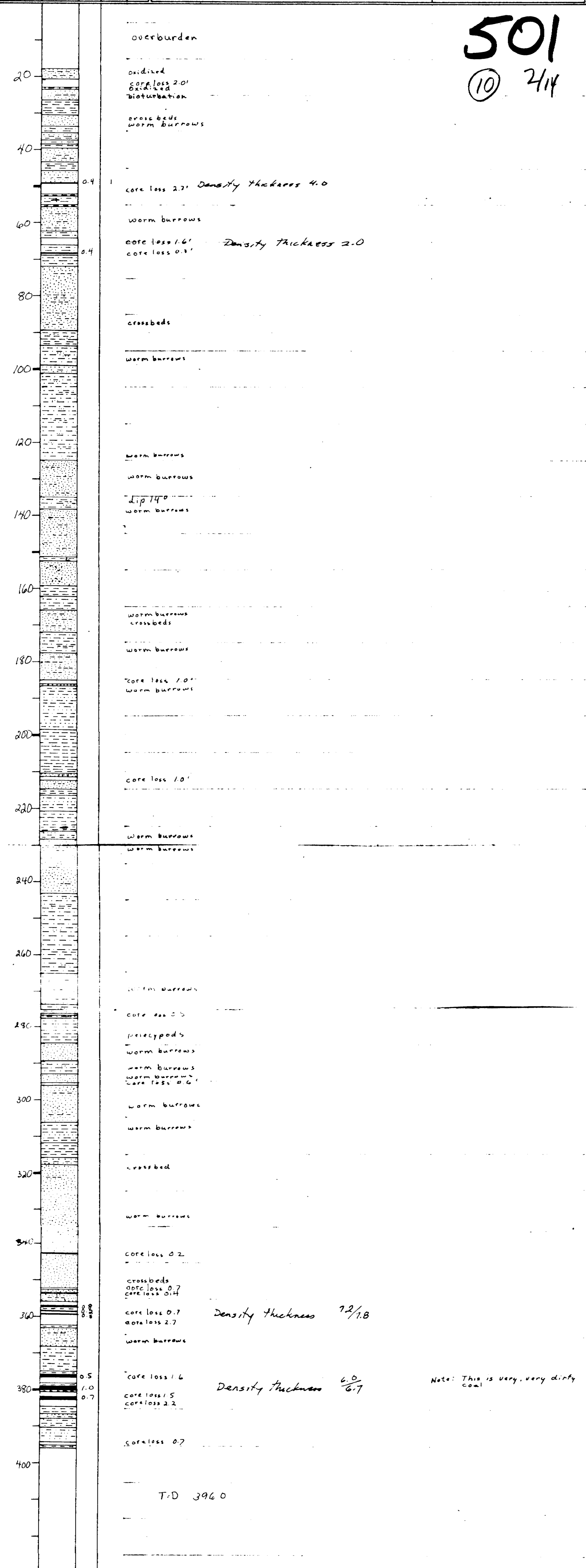
E: 58, 325

T.D. 396.0 P.D. _____

SEC. _____ T. _____ R. _____

% REC.	DEPTH	STRIP LOG	THICK	SAMPLE NO.	LITHOLOGY	
--------	-------	-----------	-------	------------	-----------	--

501
 (10) 214



Note: This is very, very dirty coal

T.D. 396.0

PR. CARBON CR 76 (3)C-2
**UTAH MINES LTD.
 DRILL & CORE LOG**

HOLE NO. DDH 76-77

HOLE NO. DDH 76-77

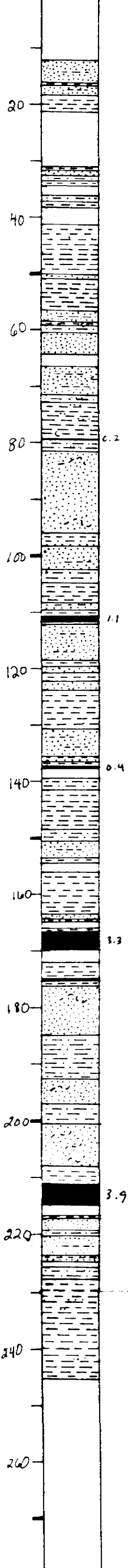
LOG BY: J Waywitka

ELEV: _____
 N: _____
 E: _____

HOLE SIZE: HQ (2 1/2")
 AIR WATER
 T.D. 246.0 PD. 240

PROJECT: Carbon Creek
 LEASE: _____
 SEC. _____ T. _____ R. _____

% REC	DEPTH	STRIP LOG	THICK	SAMPLE NO.	LITHOLOGY	
-------	-------	-----------	-------	------------	-----------	--



overburden 12'

oxidized
 m hematitic red
 bright hematitic red
 core loss 9.7'

m hematitic red
 core loss 1.7'

core loss 3.3

hematitic coloring in places
 worm burrows

bioturbation
 worm burrows
 hematite staining
 core loss 1.9
 cross beds
 hematitic staining
 calcite concretions

c. 2

dip 17°
 dip 10°

core loss 0.3

core loss 1.7

core loss 1.2

core loss 1.0
 core loss 2.0
 Density thickness 4.9/9.1

bioturbation

core loss 1.7
 marcasite
 Density thickness 7.7

core loss 1.0

T.D. 246.0

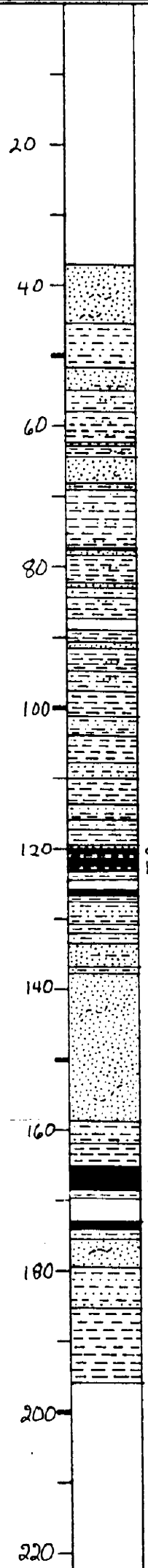
501

⑪ 2/14

PR. CARBON CR 76(3)A-2
**UTAH MINES LTD.
 DRILL & CORE LOG**

HOLE NO. DDH 76-78 HOLE NO. DDH 76-78
 LOG BY: J. Woywitka ELEV: 3270 HOLE SIZE: HQ (2 1/2") PROJECT: Carbon Creek
 DATE: Aug 7/76 N: 342,050 AIR WATER LEASE: _____
 E: 60,950 T.D. 196.0 P.D. 193.0 SEC. _____ T. _____ R. _____

% REC	DEPTH	STRIP LOG	THICK	SAMPLE NO.	LITHOLOGY
-------	-------	-----------	-------	------------	-----------



501

12

2/4

overburden 37.0

oxidized

dip 9°
crossbeds
bioturbation

bioturbation
marcasite

core loss 1.6
calcrete veinlets

bioturbation

Density thickness 3.7/4.7

core loss 1.4

bioturbation

Density thickness 5.5

core loss 3.2
bioturbation
crossbeds

Density thickness 1.8

T.D. 196.0

0.8
1.3
0.8

2.5 2

1.0 2

M-CARBON CR 76(3)E-2
UTAH MINES LTD.
DRILL & CORE LOG

HOLE NO. DDH 76-79

HOLE NO. DDH 76-79

LOG BY: J Woywitka
 DATE: Aug 9 1976

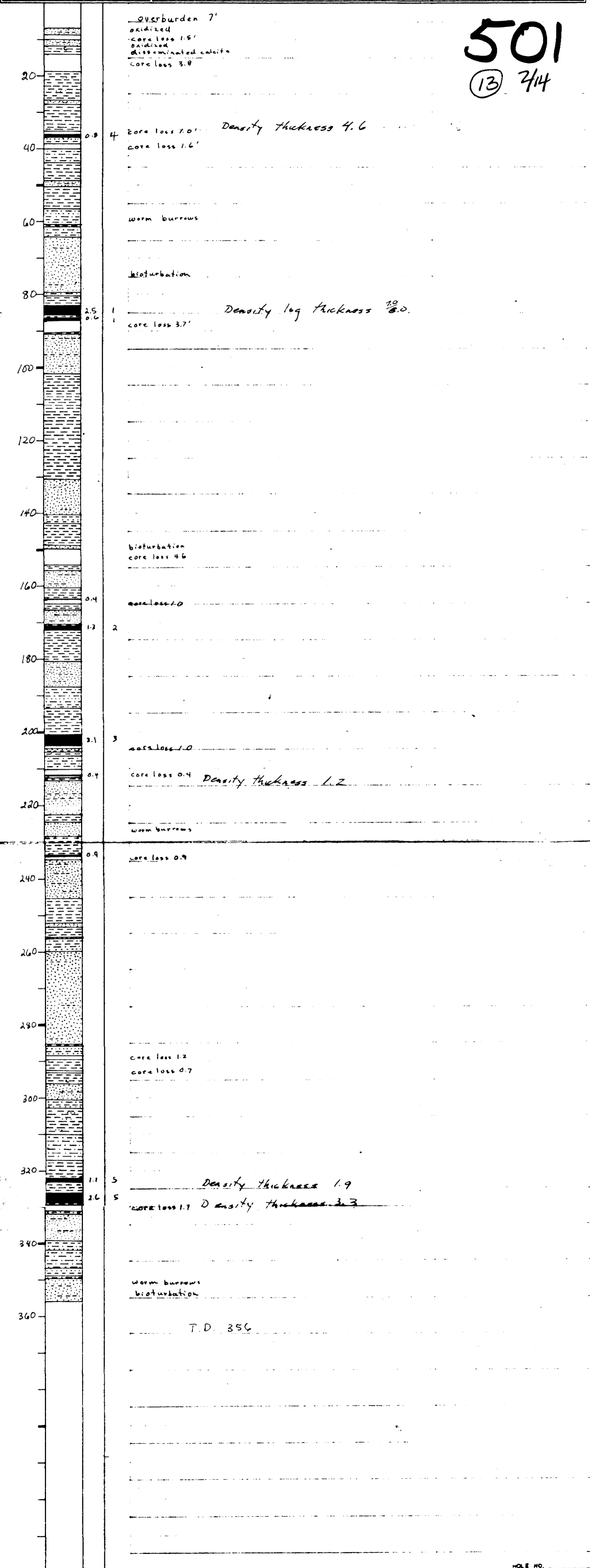
ELEV: 3340
 N. 339,950
 E. 62,780

HOLE SIZE: HQ (2 1/2")
 AIR WATER
 T.D. 356.0 P.D.

PROJECT: Carbon Creek
 LEASE: 3473
 SEC. T. R.

% REC	DEPTH	STRIP LOG	THICK	SAMPLE NO.	LITHOLOGY
-------	-------	-----------	-------	------------	-----------

501
 (13) 7/14



HOLE NO. DDH 76-80

HOLE NO. DDH 76-80

LOG BY: J. Woywitka

ELEV. _____

MOLE SIZE: HQ (2 1/2")

PROJECT: Carbon Creek

DATE: Aug 13 76

N: _____

AIR WATER

LEASE: 321 (Burns Lease)

E: _____

T.D. _____ P.D. _____

SEC. _____ T. _____ R. _____

REC	DEPTH	STRIP LOG	THICK	SAMPLE NO.	LITHOLOGY
					Casing 12'
	20				oxidized core loss 1.0 worm burrows core loss 1.3
	30		3.0	1	Density log thickness 4.1
	35		0.3	1	
	40				
	60		3.6	2	core loss 1.0 core loss 1.9 Density log thickness 5.2
	80				marcasite core loss 0.6
	100				
	120				
	140				
	160		0.2		core loss 0.3
	170				
	180		0.8		core loss 0.7
	190				
	200		1.3	3	Density log thickness 2.8
	205		0.4		core loss 0.4 bioturbation
	210				
	220		0.6		worm burrows
	230				worm burrows
	240				bioturbation
	260		1.0	4	core loss 1.5 worm burrows Density log thickness 2.0
	280				bioturbation
	300		1.8	5	core loss 4.3 Density log thickness 2.8
	320				bioturbation
	340				bioturbation core loss 1.5
	360		0.4		calcite veinlets core loss 1.5
	380				calcite veinlets
	400				worm burrows bioturbation core loss 2.8 Density log thickness 1.0
	420				bioturbation
	440				worm burrows
	460				core loss 1.0 core loss 1.0 worm burrows
	480				core loss 1.2
	500				bioturbation
	520				core loss 0.6 calcite veinlets
	540		0.8		worm burrows
	560				bioturbation
	580		0.2		core loss 0.7 bioturbation
	600				calcite veinlets fossil traces worm burrows
	620				
	640		0.7		core loss 1.7 Density log thickness 1.8
	650		0.7		core loss 2.4 Density log thickness 2.8
	660				crossbeds
	680				core loss 1.2 mud chips pebble band + mud chips
	700				pebble band + mud chips
	720				T.D. 702.0

501
 (14) 2/14

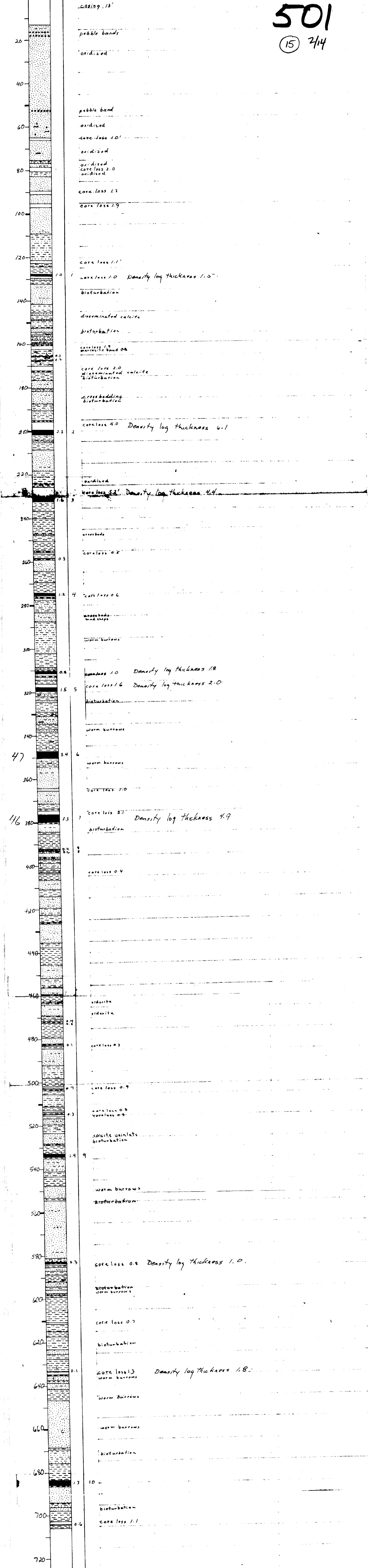
HOLE NO. DDH 76-81
 LOG BY: J. Waywika
 DATE: Aug 19/76

ELEV: 3280
 N: 349750
 E: 63550

HOLE SIZE: HQ (2 1/2")
 AIR WATER
 T.D. 706.0 PD. 203.0

HOLE NO. DDH 76-81
 PROJECT: Carbon Creek
 LEASE: 324 (Burnslee, C)
 SEC. T. R.

% REC	DEPTH	STOP	THICK	SAMPLE NO.	LITHOLOGY
-------	-------	------	-------	------------	-----------



501

(15) 2/4

PR. CARBON CR 76 (3) C-2

UTAH MINES LTD.
DRILL & CORE LOG

HOLE NO. 00H 76-83

HOLE NO. 00H 76-83

LOG BY: J. Waywiska

ELEV: 5200

HOLE SIZE: HQ (2 1/2")

PROJECT: Carbon Creek

DATE: Aug 28 / 76

N: 348900

AIR WATER

LEASE: 3493

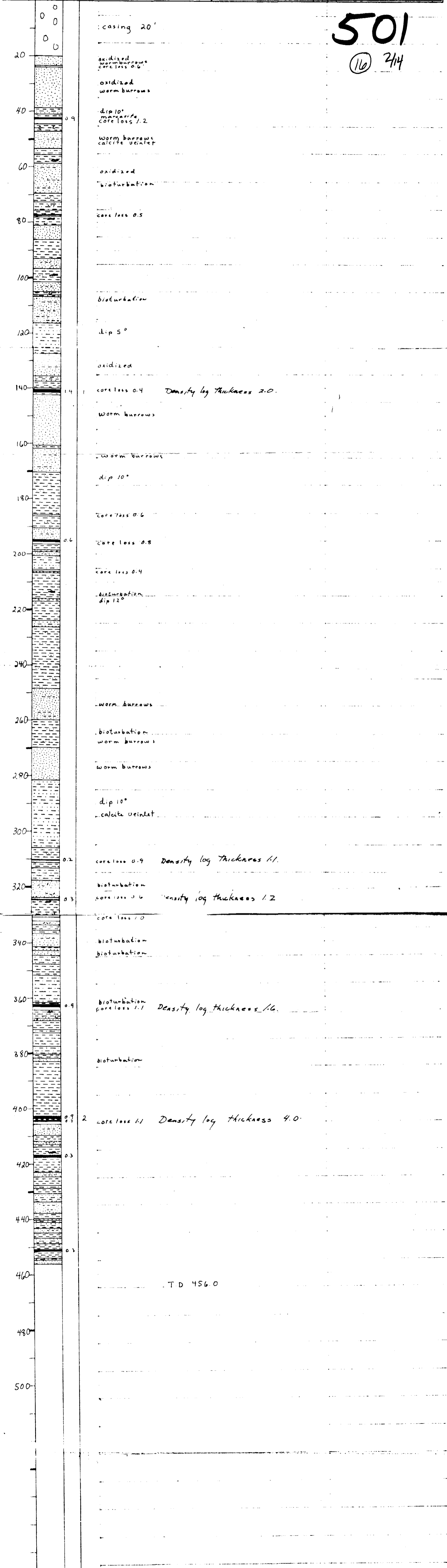
E: 47850

T.D. 456.0 P.D.

SEC. T. R.

% REC	DEPTH	STRIP LOG	THICK	SAMPLE NO.	LITHOLOGY
-------	-------	-----------	-------	------------	-----------

501
(16) 214

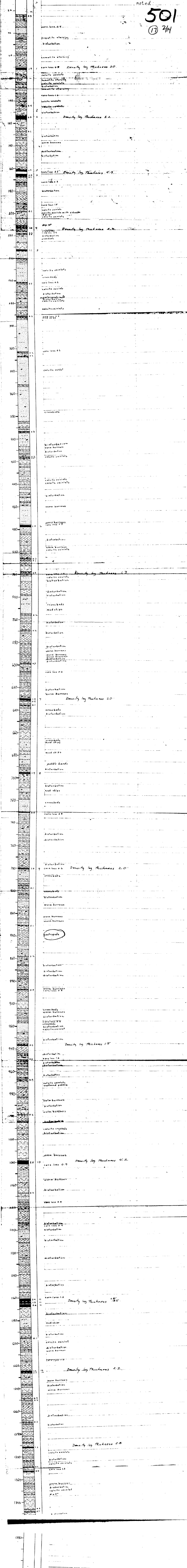


From 76(3)C-2
Bore #3

UTAH MINES LTD.
DRILL & CORE LOG

CR-76(3)C-2

HOLE NO. DDH 76-85
LOG BY J. Waymire
DATE Sept 29 76
ELEV. 4050
N 317.0 S 0
W 50.200
HOLE SIZE HQ (2 1/2")
PROJECT Carbon Creek
LEASE 3522
TO 1354.0 PD 1367.0
SEC T R



1380

UTAH MINES LTD.
DRILL & CORE LOG

PR - CARBON CR. 76(3)-C-2

HOLE NO. DDH 76-87

LOG BY: J Waymicka

DATE: Oct 13 1976

ELEV: _____
N: _____
E: _____

HOLE SIZE: HA (2 1/2")
AIR WATER
T.O. 10340 P.D. _____

HOLE NO. DDH 76-87

PROJECT: Carbon Creek

LEAVE: _____
SEC. T. R. _____

DEPTH	STEP	THICK	SAMPLE	LITHOLOGY
0				Overburden 12'
20				bioturbation hematite staining worm burrows
40				Core loss 1.0 bioturbation
60				core loss 2.1 Density log thickness 1.8
80				core loss 1.0 Density log thickness 1.3 bioturbation
100				bioturbation worm burrows core loss 1.4 Density log thickness 2.9 bioturbation worm burrows
120				core loss 0.8 crossbeds
140				crossbeds core loss 1.1 Density log thickness 2.0 hematite staining bioturbation calcite veinlets hematite staining
160				calcite veinlets Density log thickness 3.5 w split mud chips bioturbation calcite veinlets hematite staining core loss 1.0
180				mud chips calcite veinlets bioturbation calcite veinlets bioturbation bioturbation calcite veinlets
200				bioturbation core loss 0.6 Density log thickness 1.8
220				core loss 0.5 bioturbation hematite staining core loss 0.9 Density log thickness 1.8 bioturbation hematite staining crossbeds
240				bioturbation calcite veinlets crossbeds
260				crossbeds bioturbation calcite veinlets bioturbation
280				core loss 1.0 calcite veinlets core loss 1.0 crossbeds
300				crossbeds bioturbation bioturbation
320				crossbeds
340				bioturbation calcite veinlets bioturbation
360				core loss 1.0 calcite veinlets core loss 1.0 crossbeds
380				crossbeds bioturbation bioturbation
400				bioturbation Density log thickness 2.2 core loss 1.3
420				worm burrows worm burrows
440				bioturbation bioturbation core loss 1.4
460				
480				
500				calcite veinlets bioturbation
520				core loss 0.4 Density log thickness 3.2
540				mud chips
560				
580				
600				calcite veinlets
620				core loss 0.4 mud chips
640				worm burrows
660				
680				core loss 2.4 Density log thickness 4.7 calcite veinlets
700				core loss 1.9 Density log thickness 2.3
720				
740				core loss 1.1 Density log thickness 1.0 worm burrows
760				core loss 1.6 Density log thickness 1.8 core loss 0.5
780				core loss 0.4 worm burrows
800				mud chips
820				core loss 2.7 Density log thickness 4.0 worm burrows
840				core loss 1.0 bioturbation worm burrows
860				
880				bioturbation
900				core loss 1.3 Density log thickness 1.5 calcite veinlets
920				mud chips mud chips core loss 1.1
940				bioturbation bioturbation bioturbation calcite veinlet calcite veinlet bioturbation crossbeds
960				Density log thickness 1.8 calcite veinlet bioturbation
980				bioturbation
1000				
1020				core loss 0.7 Density log thickness 3.2 calcite veinlets bioturbation worm burrows

501
18 2/14

Note: All dips 1-5°
unless otherwise stated,
or impossible to take
due to bioturbation
or contorted bedding