

PR-CARBON CREEK.
76(3)e-2.
Well logs
(Book e-2).

501
5/14

5/14 5010

Widco WELL LOG

1 CORREL. OF 76134-2 76-67

COMPANY Utah Mines Ltd.
WELL 76-67
LOCATION S17200 X 773000

COORDINATES: 41, 7, 24 X
N 7, 24 E
ELEVATION:
D.F.
K.B.
O.I. 1100'±

COMPANY Utah Mines Ltd.
AREA Carbon Creek
WELL 76-67
COUNTY STATE

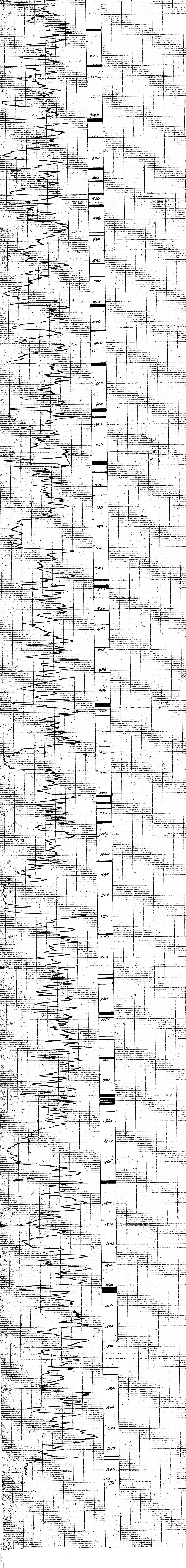
Run No. 1 Run No. 2
Date OCTOBER 4, 1971
First Reading 1665'
Last Reading 0'
Footage Logged 1665'
Bottom (Driller) 1665'
Casing (From Log)
Casing (Driller)
Casing Site
Bit Size 11 1/2" 1 1/2"

MUD
Nature
Density
Viscosity
Resistivity
Max. 30 BHT
pH
Circ. Temp.
8-Hr. Temp.
Logged by R. L. Linn
Witnessed by R. CURTIS

REMARKS

Gamma

76-67



5/14 501(2)

Widco

WELL LOG

COMPANY: H. H. Hines, Inc.

AREA: Carbon Creek

WELL: 76-17

COUNTY: STATE: B.C.

COORDINATES: N 31.2' W 6.8' E

S 57.0' E 500'

ELEVATION:

D.F. K.B. G.L. 1380' ±

LOG NO. 76-17-5-2
WELL 76-17
LOCATION: N 31.2' W 6.8' E
S 57.0' E 500'

	Run No. 1	Run No. 2	MUD	Run No. 1	Run No. 2
Date	October 14, 1970		Nature		
First Reading	1405'		Density		
Last Reading	300'		Viscosity		
Footage Logged	1305'		Resistivity		
Bottom (Driller)	1405'		Res. @ BHT		
Casing (From Log)			pH		
Casing (Driller)			Circ. Temp.		
Casing Size			B.H. Temp.		
Bit Size	11 1/2"		Logged by	H. J. Lamm	
Bit Size			Witnessed by	K. CURTIS	

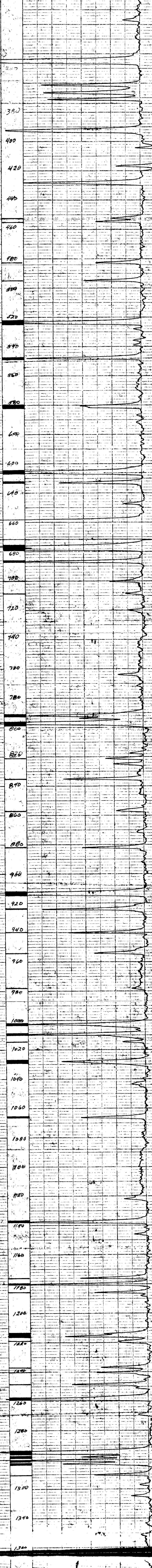
REMARKS:

* Reg. U.S. Pat. Off.

Density
WT = 8.500

5039

300
320
340
360
380
400
420
440
460
480
500
520
540
560
580
600
620
640
660
680
700
720
740
760
780
800
820
840
860
880
900
920
940
960
980
1000
1020
1040
1060
1080
1100
1120
1140
1160
1180
1200
1220
1240
1260
1280
1300
1320
1340
1360
1380
1400
1420
1440
1460
1480
1500
1520
1540
1560
1580
1600
1620
1640
1660
1680



SH 501 (3)

Widco

WELL LOG

COMPANY: Utah Mines Ltd.
AREA: Carbon Creek
WELL: 76-68
COUNTY: STATE: E.C.

COORDINATES: 365,075N X
N: 51,450E
ELEVATION:
D.F.:
K.B.:
G.L.: 4055'±

WELL: 76-68
COMPANY: Utah Mines Ltd.
LOCATION: 365,075N X 51,450E
76-68
76-68
76-68

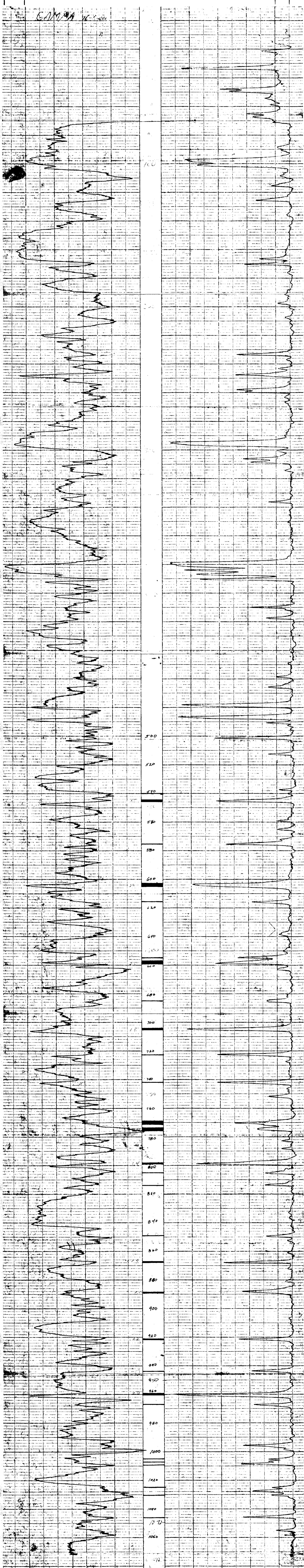
Date	Run No. 1	Run No. 2	MUD	Run No. 1		Run No. 2	
First Reading	1072		Nature				
Last Reading	6		Density				
Footage Logged	1066		Viscosity				
Bottom (Driller)	1072		Resistivity				
Casing (From Log)			Res. @ BHT				
Casing (Driller)			pH				
Casing Size			Circ. Temp				
Bit Size	10 1/4"	2 1/2"	B.H. Temp				
			Logged by	P. Lum			
			Witnessed by	H. Currie			

REMARKS:

Gamma TC = 5sec
Density TC = 3sec

* Reg. U.S. Pat. Off.

50103



Gamma Density Copy

76-68
5/14 501(4)

Widco WELL LOG

COMPANY: Utah Mines Ltd.
 AREA: Carbon Creek
 WELL: 76-68
 COUNTY: STATE: P.C.

COORDINATES: 109,072 N X
 51,450 E
 ELEVATION:
 D.F.:
 K.B.:
 G.I.: 4955'

LOCATION: 36.5, 0.75 N X
 51,450 E
 76-68
 1961
 COMPANY: UTAH MINES LTD.
 1384

	Run No. 1	Run No. 2	MUD	Run No. 1	Run No. 2
Date			Nature		
First Reading	1072		Density		
Last Reading	6		Viscosity		
Footage Logged	1066		Resistivity		
Bottom Driller	1072		Res. to SPT		
Casing from Log			SPT		
Casing (inlet)			Shot Temp.		
Casing Size			Shot Temp.		
Bit Size	110 3/4"		Logged by	B. Linn	
Bit Size			Witnessed by	P. Curry	

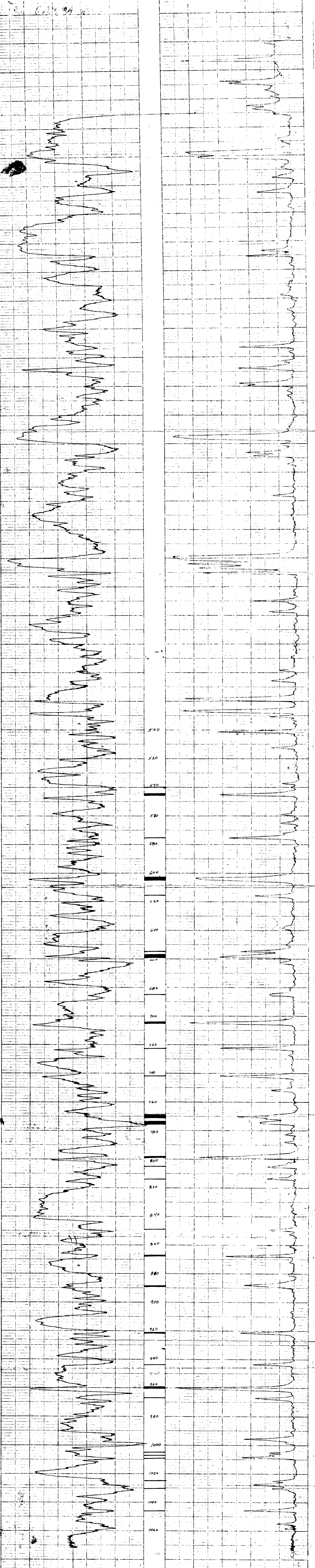
REMARKS

* Reg. U.S. Pat. Off.

Gamma
100 - 5000

Density
100 - 15000

68105



WIDCO DIVISION OF GEARHART OWEN INDUSTRIES, FORT WORTH, TEXAS * CHART NO. 102 MADE IN U.S.A.

5/11 5016

Widco WELL LOG

COMPANY Utah Mines Ltd.
 AREA Carbon Creek
 WELL 76-71
 COUNTY STATE B.C.

COORDINATES 35,650N
 N X 13,800E
 ELEVATION:
 D.F.
 K.B.
 G.I. 3150'

WELL 76-71
 LOCATION 35,650N X 63,800E
 COMPANY Utah Mines Ltd.

	Run No. 1	Run No. 2	MUD	Run No. 1	Run No. 2
Date	July 8, 1976		Nature		
First Reading	937'		Density		
Last Reading	4'		Viscosity	a F	b F
Footage Logged	933'		Resistivity	a F	b F
Bottom (Driller)	946'		Res. @ BHT	a F	b F
Casing (From Log)			pH		
Casing (Driller)			Circ. Temp.		
Casing Size			B.H. Temp.		
Bit Size	HQ 2 1/2"		Logged by	B. Lum	
Bit Size			Witnessed by	K. Currie	

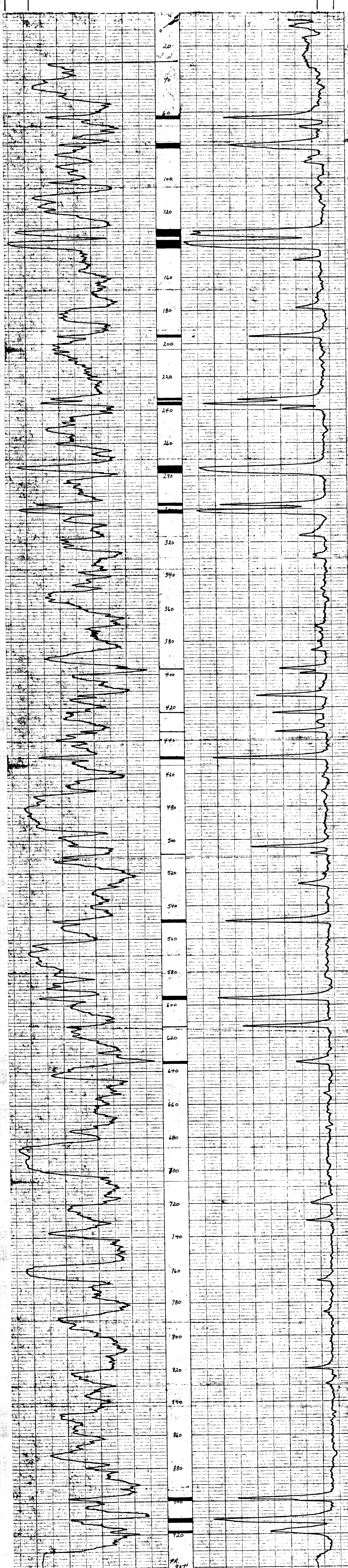
REMARKS

* Reg. U.S. Pat. Off.

Gamma TC=5 Secs

Density TC=3 Secs

10 199



937'

5/14 5010

Widco WELL LOG

COMPANY Utah Mines Ltd.
AREA Carbon Creek
WELL 76-72

COORDINATES 342,500N
N X 63,150E
ELEVATION:
D.F.
K.B.
G.L. 3280'±

WELL 76-72
LOCATION 342,500N X 63,150E

COMPANY Utah Mines Ltd.
76-72

	Run No. 1	Run No. 2	MUD	Run No. 1	Run No. 2
Date	July 15, 1976		Nature		
First Reading	983'		Density		
Last Reading	2'		Viscosity	α	F
Footage Logged	981'		Resistivity	α	F
Bottom (Driller)	1006'		Res. @ BHT	ω	ε
Casing (From Log)			pH		
Casing (Driller)			Circ. Temp.		
Casing Size	HQ 25"		B.H. Temp.		
Bit Size			Logged by	B. Lum	
			Witnessed by	K. Currie	

REMARKS:

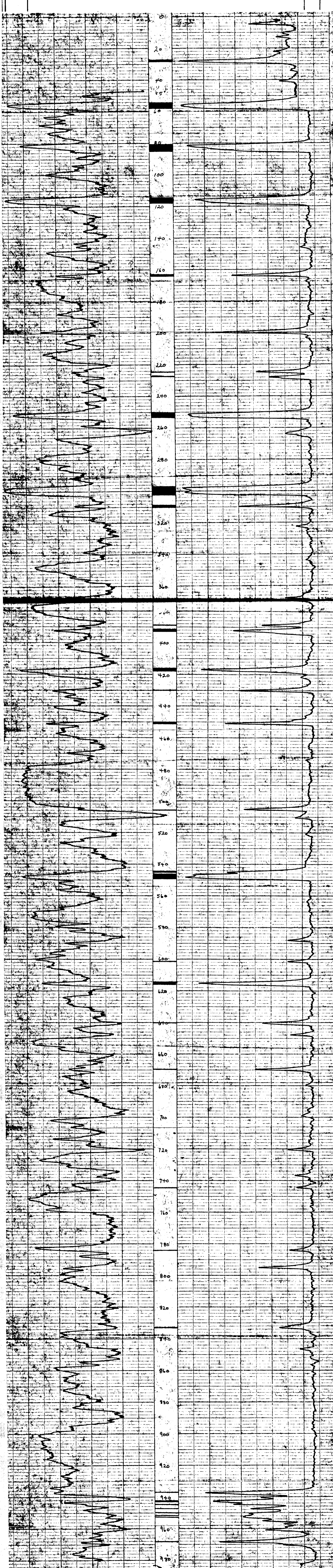
* Reg. U.S. Pat. Off.

Gamma
TC = 5 Secs

Density
TC = 3 Secs

FO 38

76-72



5/14 5010

Widco* WELL LOG

COMPANY Utah Mines Ltd.
WELL 76-73
LOCATION 339,000N X 60,000E

COMPANY Utah Mines Ltd.
AREA Carbon Creek
WELL 76-73
COUNTY STATE B.C.

COORDINATES 339,000N
N X 60,000E
S
ELEVATION:
D.F.
K.B.
G.L. 3980'±

	Run No. 1	Run No. 2	MUD	Run No. 1	Run No. 2
Date	July 23, 1976		Nature		
First Reading	553'		Density		
Last Reading	4'		Viscosity	a	e
Footage Logged	549'		Resistivity	a	e
Bottom (Driller)	556'		Res. @ BHT	a	e
Casing (From Log)			pH		
Casing (Driller)			Circ. Temp.		
Casing Size			B.H. Temp.		
Bit Size	11 1/2"				
Bit Size					
			Logged by	B. Lum	
			Witnessed by	K. Currie	

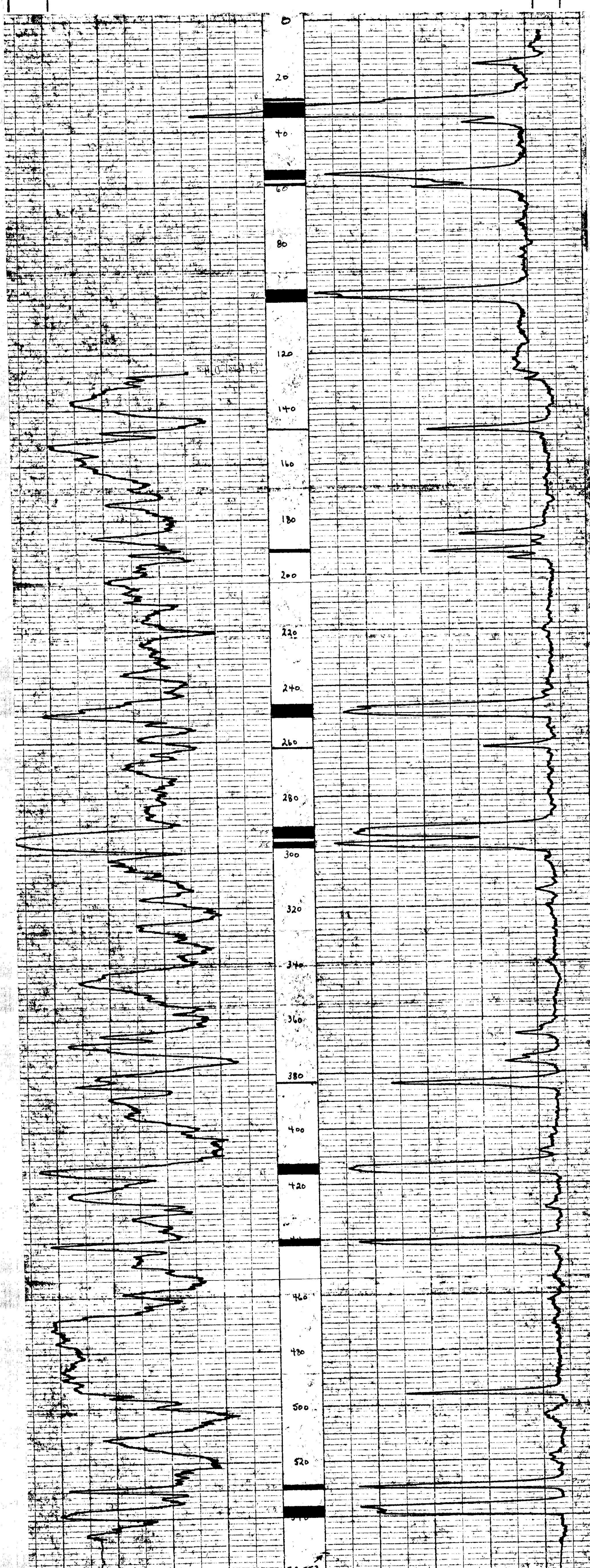
REMARKS

* Reg. U.S. Pat. Off.

Gamma
TC=5 Secs

Density
TC=3 Secs

FO 139



Carbon Creek 76 (B) 2-2

76-73

514 501 (8)

Widco*

WELL LOG

COMPANY Utah Mines Ltd.
WELL 76-74
LOCATION 338,450N x 56,350E

COMPANY Utah Mines Ltd.
AREA Carbon Creek
WELL 76-74
COUNTY STATE B.C.

COORDINATES: 338,450N
N x 56,350E
S
ELEVATION:
D.F.
K.B. 4470' ±
G.I.

	Run No. 1	Run No. 2	MUD	Run No. 1	Run No. 2
Date	July 26, 1976		Nature		
First Reading	370'		Density		
Last Reading	4'		Viscosity	@ F	@ F
Footage Logged	366'		Resistivity	@ F	@ F
Bottom (Driller)	370'		Res. @ BHT	@ F	@ F
Casing (From Log)			pH		
Casing (Driller)			Circ. Temp.		
Casing Size			B.H. Temp.		
Bit Size:	HO 2 1/2"				
Bit Size:			Logged by	B. Lum	
			Witnessed by	K. Currie	

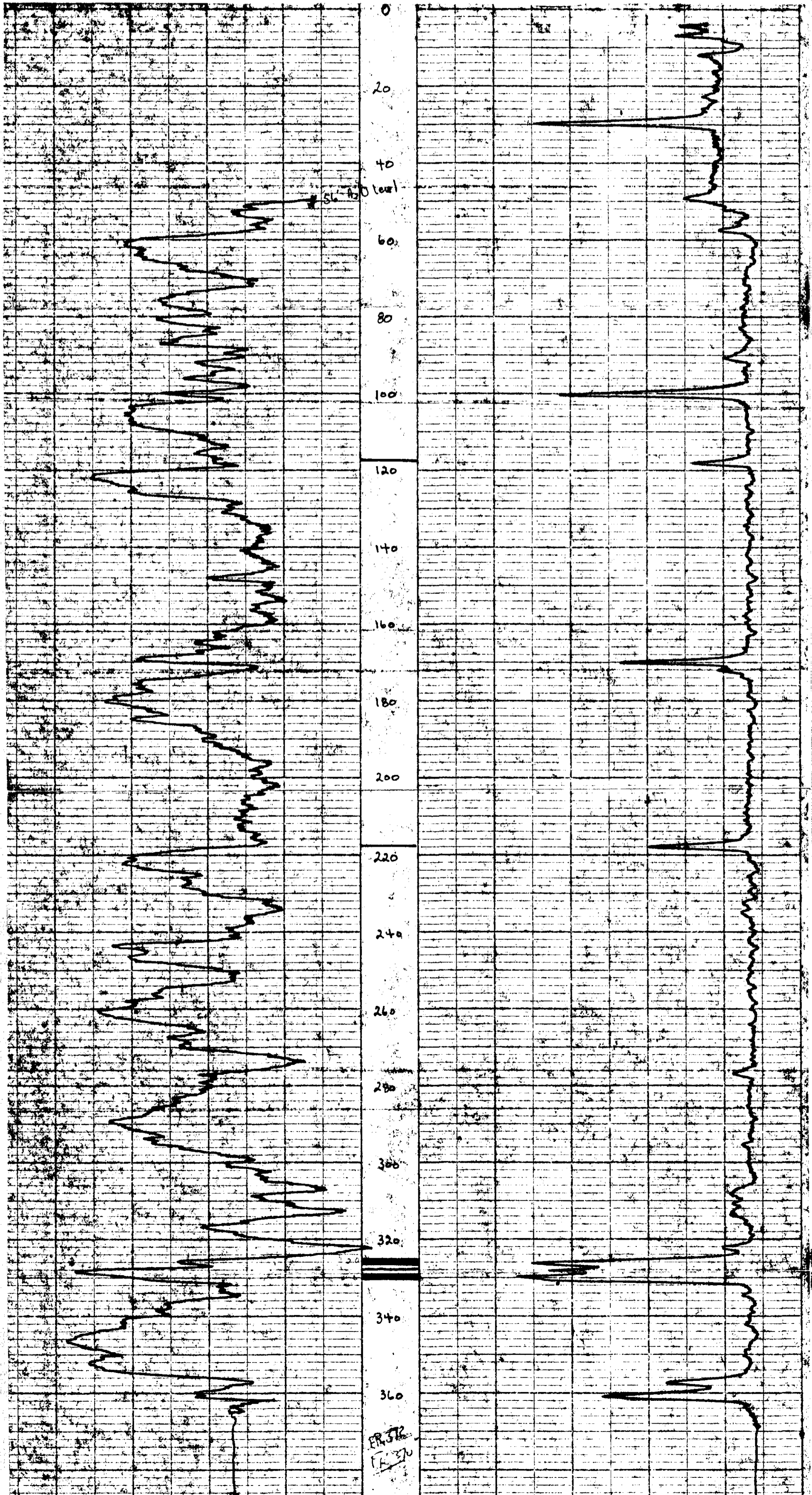
REMARKS

* Reg. U.S. Pat. Off.

Gamma
TC = 5 Secs

Density
TC = 3 Secs

FO-139



76-74

Widco * WELL LOG

5/14 5019

COMPANY Utah Mines Ltd.
 WELL 76-75
 LOCATION 340,450N X 59,400E

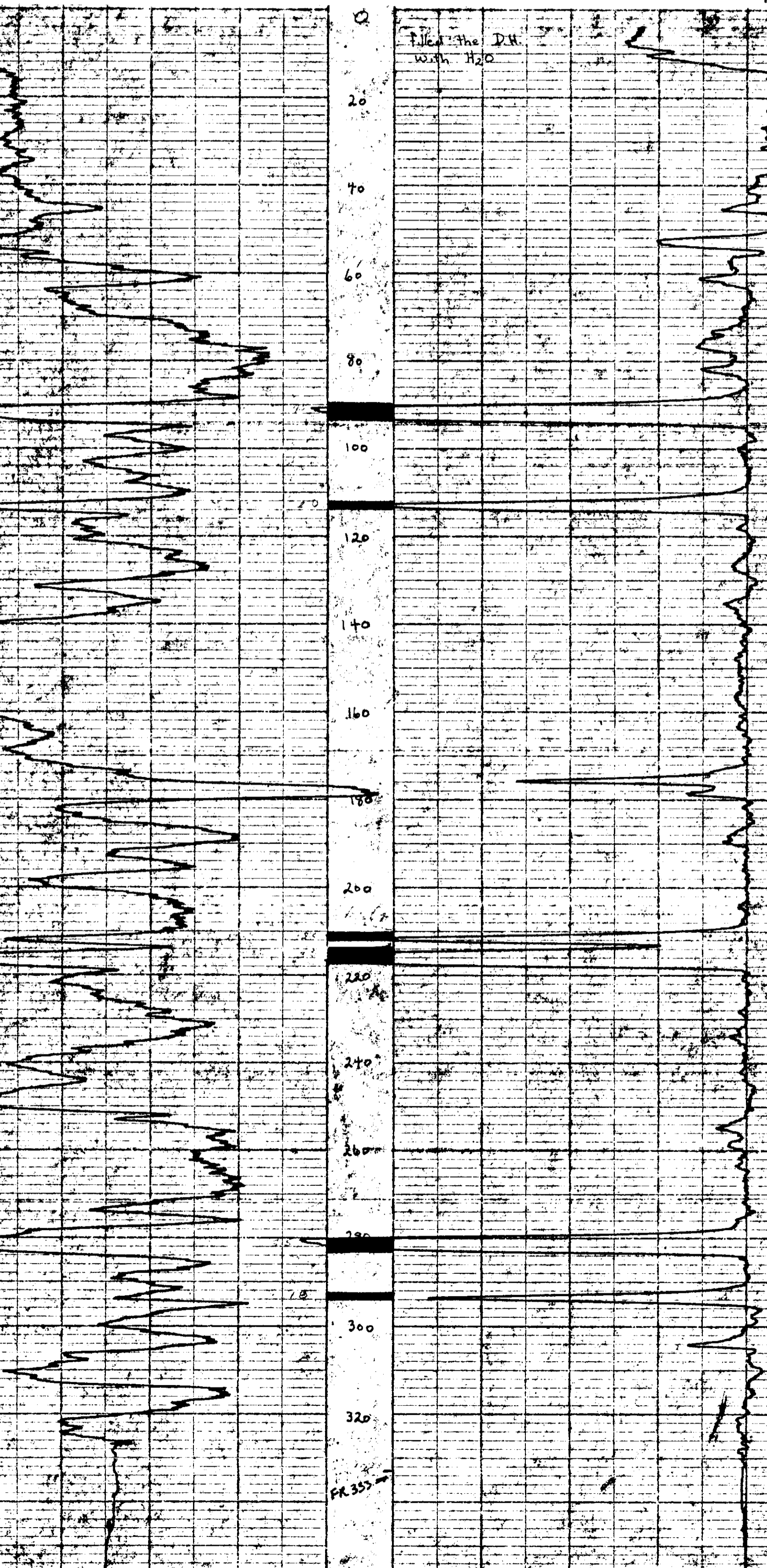
COMPANY Utah Mines Ltd.
 AREA Carbon Creek
 WELL 76-75
 COUNTY _____ STATE B.C.

COORDINATES: 340,450N
N x 59,400E
 S
 ELEVATION: _____
 D.F. _____
 K.B. _____
 G.L. 3620'±

	Run No. 1		Run No. 2		MUD	Run No. 1		Run No. 2	
	Date	July 29, 1976				Nature			
First Reading	333'				Density				
Last Reading	0'				Viscosity				
Footage Logged	333'				Resistivity				
Bottom (Driller)	336'				Res. at BHT				
Casing (Driller)					pH				
Casing Size					Circ Temp.				
Bit Size:	110 2 1/2"				B.H. Temp.				
Bit Size:					Logged by	B. Lum			
					Witnessed by	K. Currie			

REMARKS _____

Gamma TC=5 Secs Density TC=3 Secs



112 - 0000000000 76 (320-2) 76-75
 FO-139

Widco

WELL LOG

5/14 501

COMPANY Utah Mines Ltd.
WELL 76-76
LOCATION 341,600N X 58,325E

Utah Mines Ltd. 76-76 (3) 2-2 76-76

COMPANY Utah Mines Ltd.
AREA Carbon Creek
WELL 76-76
COUNTY STATE B.C.

COORDINATES: 341,600N
N X 58,325E
S
ELEVATION:
D.F.
K.B.
G.L. 3550'±

	Run No. 1	Run No. 2	MUD	Run No. 1	Run No. 2
Date	Aug. 2, 1976		Nature		
First Reading	393'		Density		
Last Reading	4'		Viscosity	α F	β F
Footage Logged	399'		Resistivity	α F	β F
Bottom (Driller)	396'		Res. @ BHT	α F	β F
Casing (From Log)			pH		
Casing (Driller)			Circ. Temp.		
Casing Size			B.H. Temp.		
Bit Size:	HQ 2 1/2"		Logged by	B. Lum	
Bit Size:			Witnessed by	K. Currie	

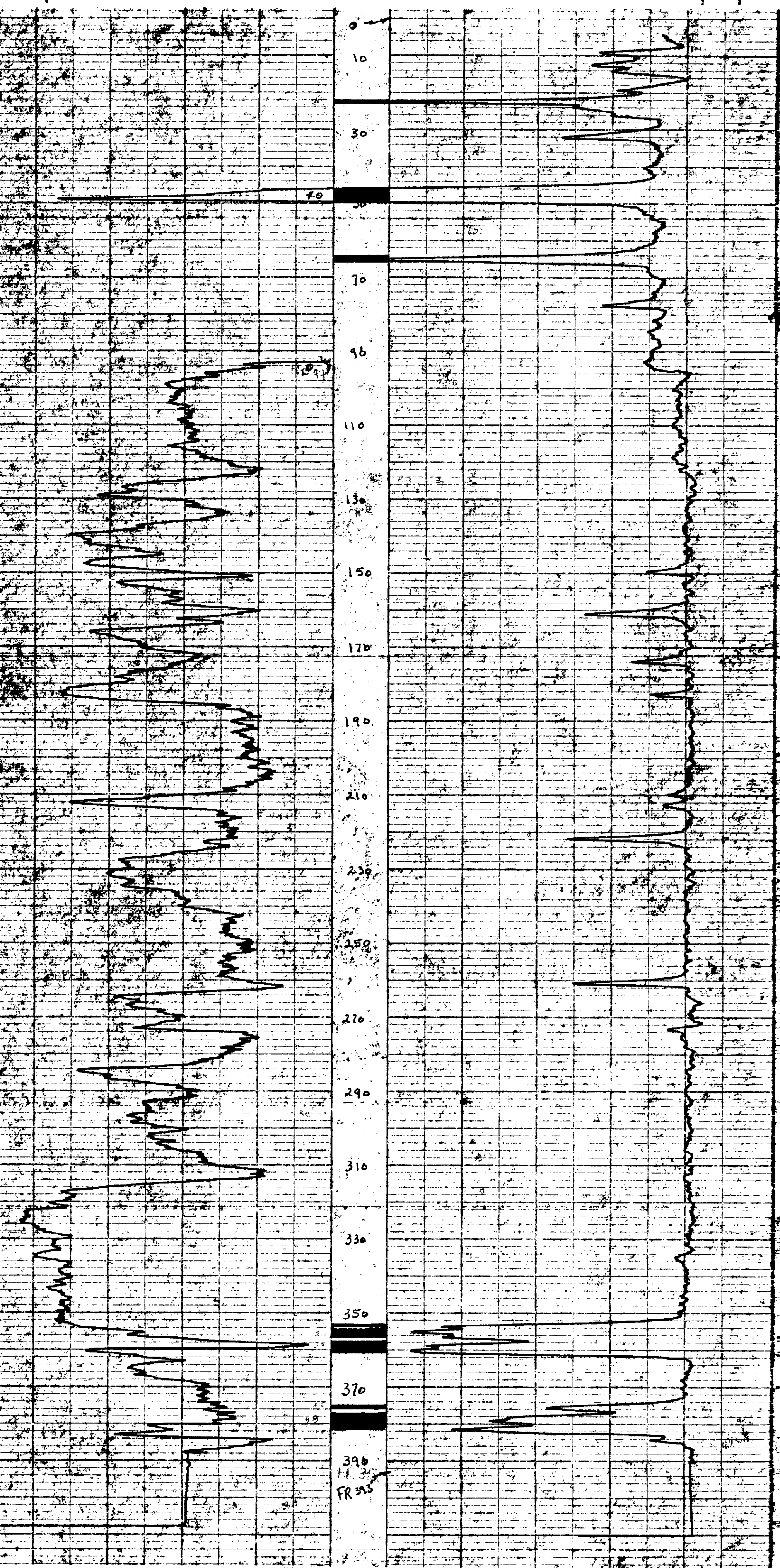
REMARKS

* Reg. U.S. Pat. Off.

Gamma
TC = 5 Secs

Density
TC = 3 Secs

FO-139



P.A.

5/14 501

Widco* WELL LOG

COMPANY Utah Mines Ltd.
WELL 76-77
LOCATION 341,000N x 60,800E

Carbon Creek - 76(3)2-2 76-77

COMPANY Utah Mines Ltd.
AREA Carbon Creek
WELL 76-77
COUNTY STATE B.C.

COORDINATES: 341,000N x 60,800E
N
S
ELEVATION:
D.F.
K.B.
G.I. 3480' ±

Date	Run No. 1	Run No. 2	MUD	Run No. 1	Run No. 2
Aug. 4, 1976			Nature		
First Reading	240'		Density		
Last Reading	5'		Viscosity		
Footage Logged	235'		Resistivity		
Bottom (Driller)	246'		Res. a BHT		
Casing (From Log)			pH		
Casing (Driller)			Circ. Temp.		
Casing Size			B.H. Temp.		
Bit Size:	H.O. 2 1/2"				
Bit Size:					
			Logged by	B. Lum	
			Witnessed by	K. Currie	

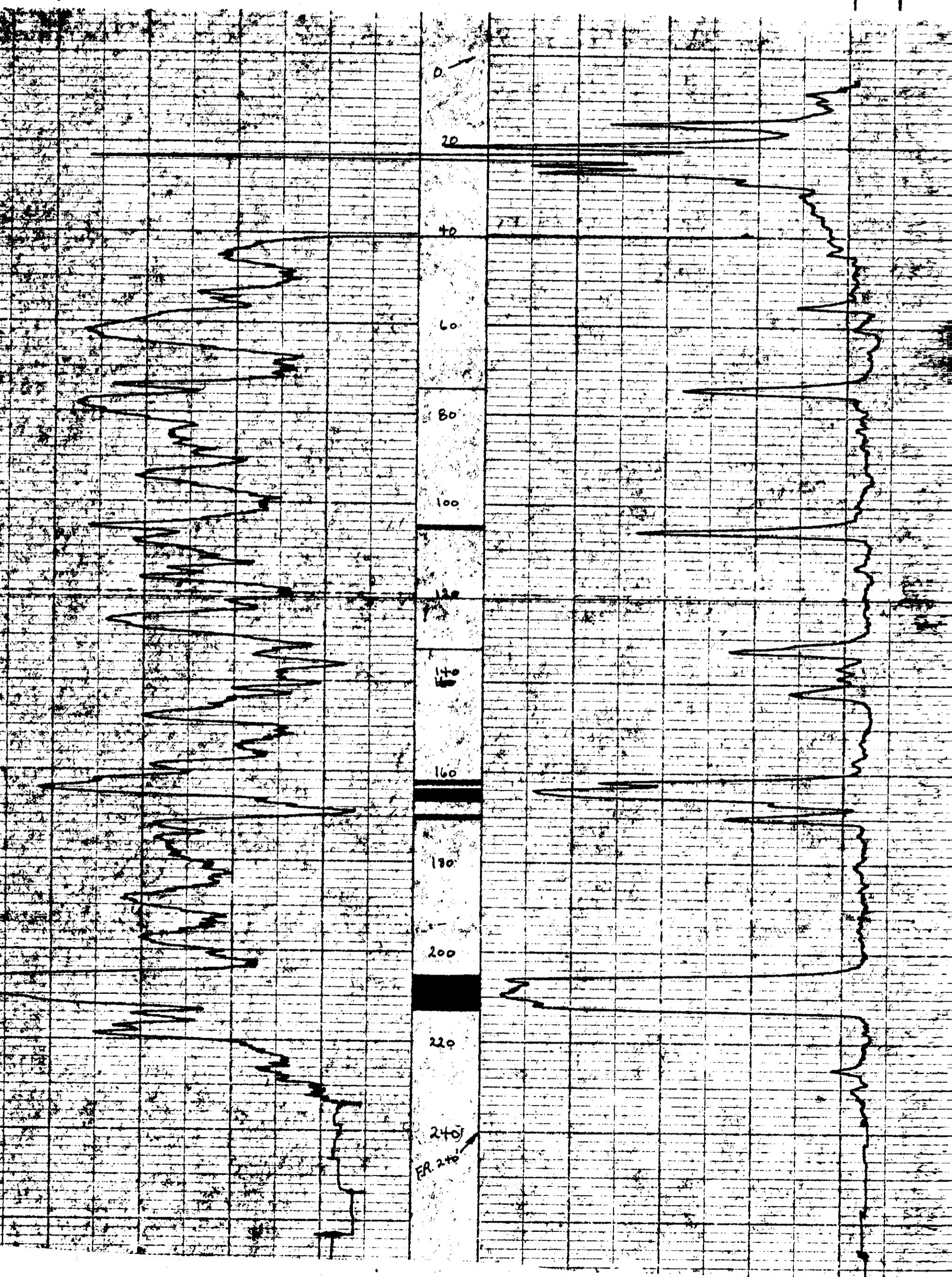
REMARKS

Gamma
TC = 3 Secs

Density
TC = 3Secs

* Reg. U.S. Pat. Off.

FO-139



P.O.

5/14 501 (12)

PR Carbon Cr 76 (3) E-2

Widco* WELL LOG

COMPANY Utah Mines Ltd.
WELL 76-78
LOCATION 342,050N X 60,950E

COMPANY Utah Mines Ltd.
AREA Carbon Creek
WELL 76-78
COUNTY STATE B.C.

COORDINATES: 342,050N
N x 60,950E
S
ELEVATION:
D.F.
K.B.
G.L. 3270' ±

	Run No. 1	Run No. 2	MUD	Run No. 1	Run No. 2
Date	Aug. 7, 1976		Nature		
First Reading	193'		Density		
Last Reading	5'		Viscosity	ω F	B. G. B.
Footage Logged	188'		Resistivity	ω F	A. L. L.
Bottom (Driller)	196'		Res. ω BHT	ω F	
Casing (From Log)			pH		
Casing (Driller)			Circ. Temp.		
Casing Size			B.H. Temp.		
Bit Size:	HO 2 1/2"		Logged by:	B. Lum	
Bit Size:			Witnessed by:	K. Currie	

76-78

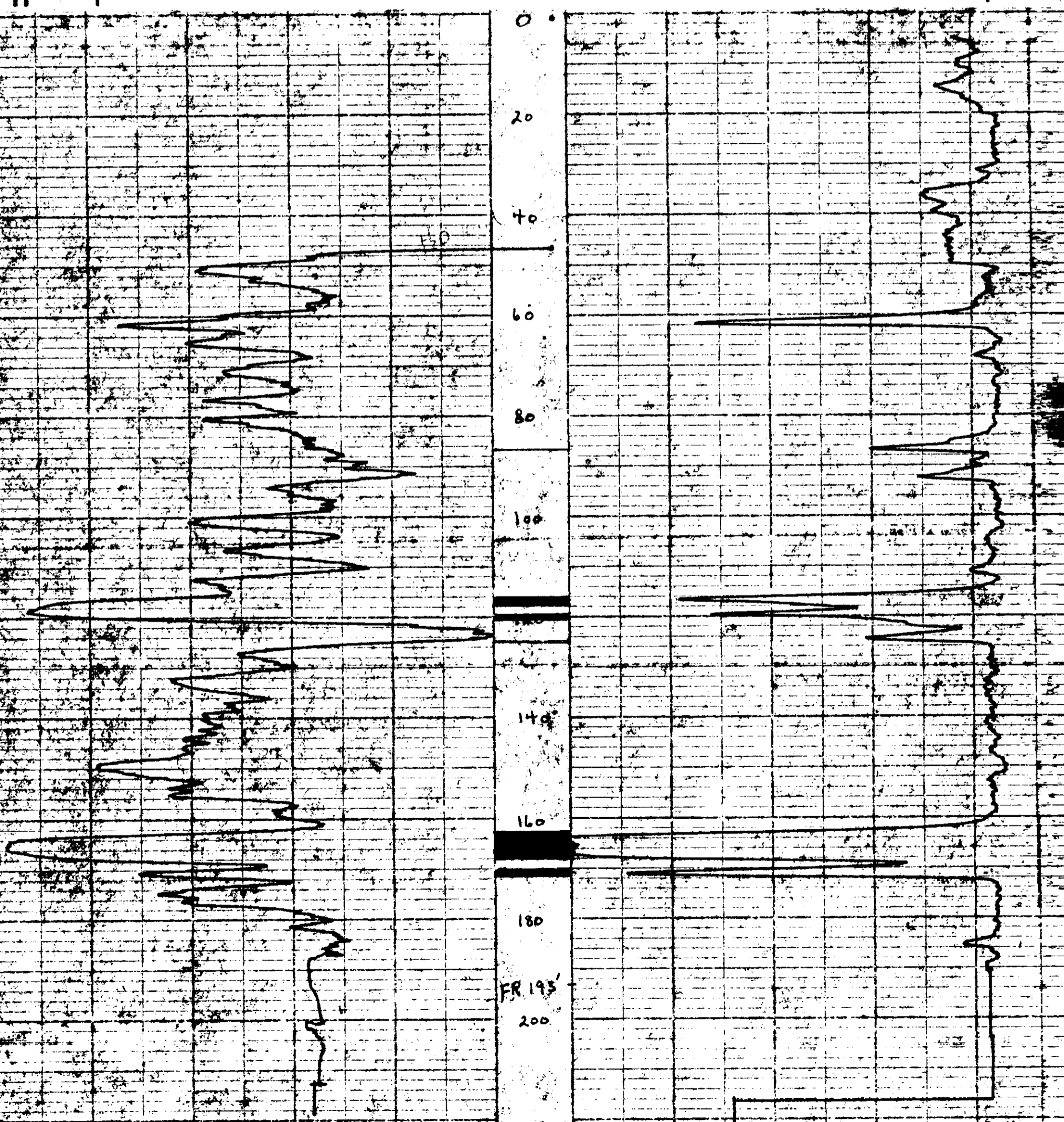
FO 139

REMARKS

* Reg. U.S. Pat. Off.

Gamma
TC=5 Secs

Density
TC=3 Secs



P.Q.

5/14 (13) 501

PA - CARBON CR 76 (3) 2-2

76-79

Widco*

WELL LOG

COMPANY _____
WELL _____
LOCATION _____

COMPANY Utah Mines Ltd.
AREA Carbon Creek
WELL 76-79
COUNTY _____ STATE B.C.

COORDINATES: 339,950N
N X 62,780E
S
ELEVATION: _____
D.F. _____
K.B. _____
G.I. 3340

	Run No. 1	Run No. 2	MUD	Run No. 1	Run No. 2
Date	<u>Aug. 11, 1976</u>		Nature		
First Reading	<u>350</u>		Density		
Last Reading	<u>0</u>		Viscosity	<u>ω</u>	<u>F</u>
Footage Logged	<u>350</u>		Resistivity	<u>ω</u>	<u>F</u>
Bottom (Driller)	<u>356</u>		Res. ω BHT	<u>ω</u>	<u>F</u>
Casing (From Log)			pH		
Casing (Driller)			Circ. Temp.		
Casing Size	<u>HQ 2 1/2"</u>		B.H. Temp.		
Bit Size:					
Bit Size:					
			Logged by	<u>B. Dur</u>	
			Witnessed by	<u>E. Currie</u>	

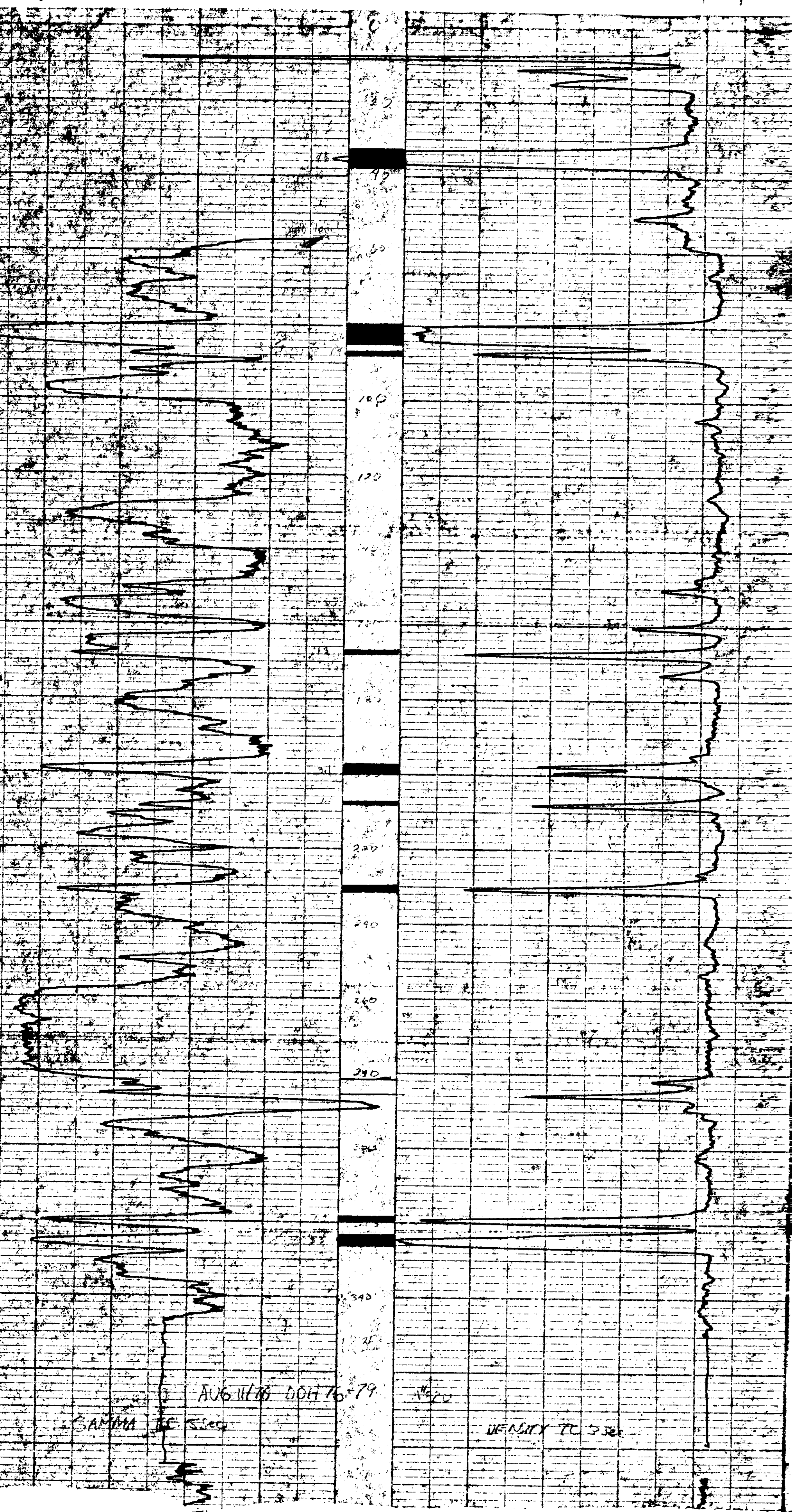
REMARKS _____

* Reg. U.S. Pat. Off.

FO-139

Gamma

Density



5/14 (14) 501

Widco* WELL LOG

COMPANY: Utah Mines Ltd.
 AREA: Carbon Creek
 WELL: 76-80
 COUNTY: STATE B.C.

COORDINATES: 343,260N x 66,450E
 ELEVATION:
 D.F.
 K.B.
 G.L. 2975'±

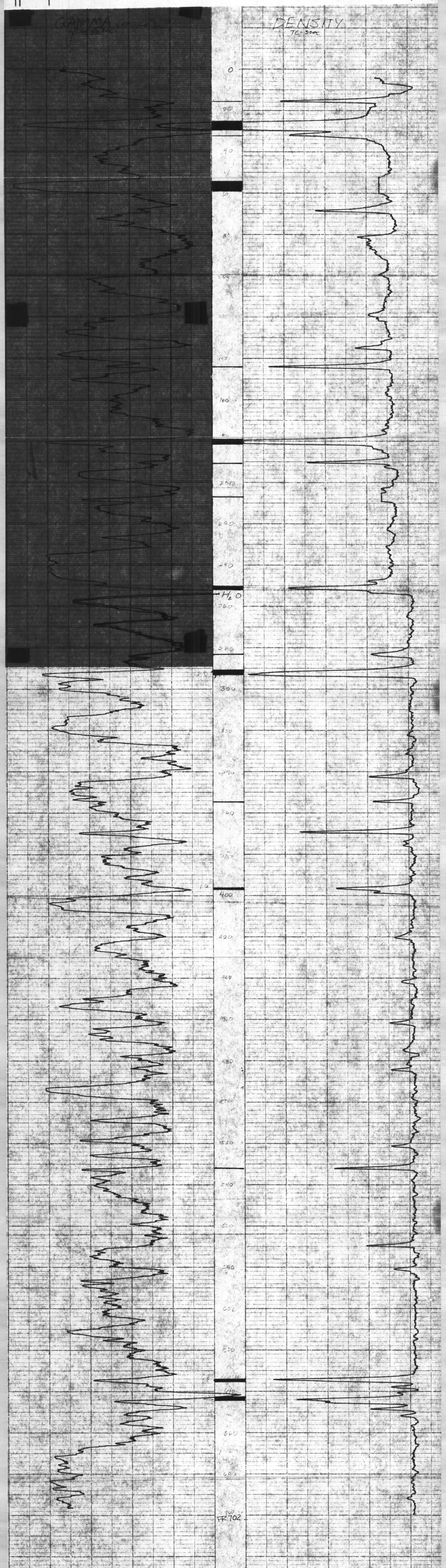
WELL: 76-80
 COMPANY: Utah Mines Ltd.
 LOCATION: 343,260N x 66,450E

	Run No. 1	Run No. 2	MUD	Run No. 1	Run No. 2
Date	August 16/76		Nature		
First Reading	702'		Density		
Last Reading	0'		Viscosity	@ F	@ F
Footage Logged	702'		Resistivity	@ F	@ F
Bottom (Driller)	702'		Res. @ BHT	@ F	@ F
Casing (From Log)			pH		
Casing (Driller)			Circ. Temp.		
Casing Size	HQ 2 1/2"		B.H. Temp.		
Bit Size:					
Bit Size:					
			Logged by	B. Lum	
			Witnessed by	K. Currie	

REMARKS:

Gamma TC = 5 Sec. Density TC = 3 Sec.

76-80
FO-139



P.O.

5/14 @ 501

76-81

Widco WELL LOG

COMPANY Utah Mines Ltd. COORDINATES: 348,950N X
 N. 63,880E
 AREA Carbon Creek S
 ELEVATION:
 WELL 76-81 D.F.
 K.B. 3280' ±
 COUNTY _____ STATE _____ B.C. _____ G.I.

LOCATION: 348,950N X 63,880E
 WELL: 76-81
 COMPANY: Utah Mines Ltd.

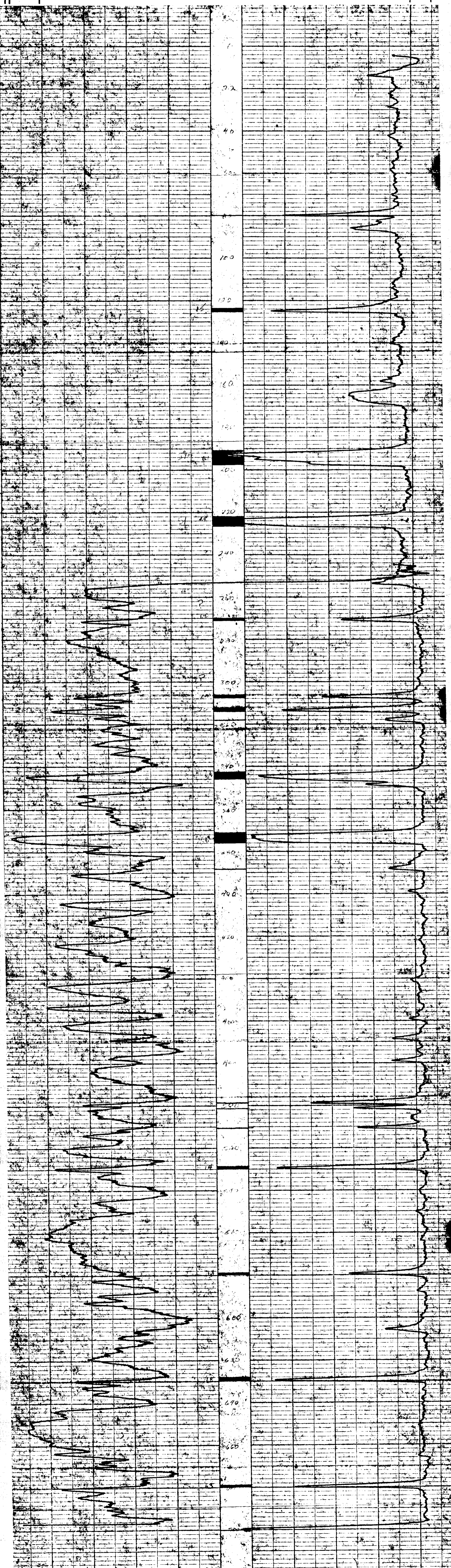
Date	Run No. 1	Run No. 2	MUD	Run No. 1	Run No. 2
First Reading	703		Nature		
Last Reading	4		Density		
Footage Logged	699		Viscosity	α	β
Bottom (Driller)	706		Resistivity	α	β
Casing (Driller)			Res. @ BHT	α	β
Casing (From Log)			pH		
Casing Size			Circ. Temp.		
Bit Size	110 2 1/2"		B.H. Temp.		
Bit Size			Logged by	B. Lum	
			Witnessed by	K. Currie	

REMARKS:

Gamma TC = 5sec. Density TC = 3sec.

* Reg. U.S. Pat. Off.

FO 139



Widco WELL LOG

COMPANY Utah Mines Ltd.
 WELL 76-83
 LOCATION 348,900N x 47,850E

COMPANY Utah Mines Ltd.
 AREA Carbon Creek
 WELL 76-83
 COUNTY STATE B.C.

COORDINATES: 348,900N x 47,850E
 N
 S
 ELEVATION:
 D.F.
 K.B.
 G.I. 5200'

	Run No. 1	Run No. 2	MUD	Run No. 1	Run No. 2
Date	Aug. 30/76		Nature		
First Reading	452		Density		
Last Reading	4		Viscosity	@	F
Footage Logged	448		Resistivity	@	F
Bottom (Driller)	456		Res. @ BHT	a	F
Casing (From Log)			pH		
Casing (Driller)			Circ. Temp.		
Casing Size			B.H. Temp.		
Bit Size:	HQ 2 1/2"		Logged by	B. Lum	
Bit Size:			Witnessed by	K. Currie	

50116
 5/14

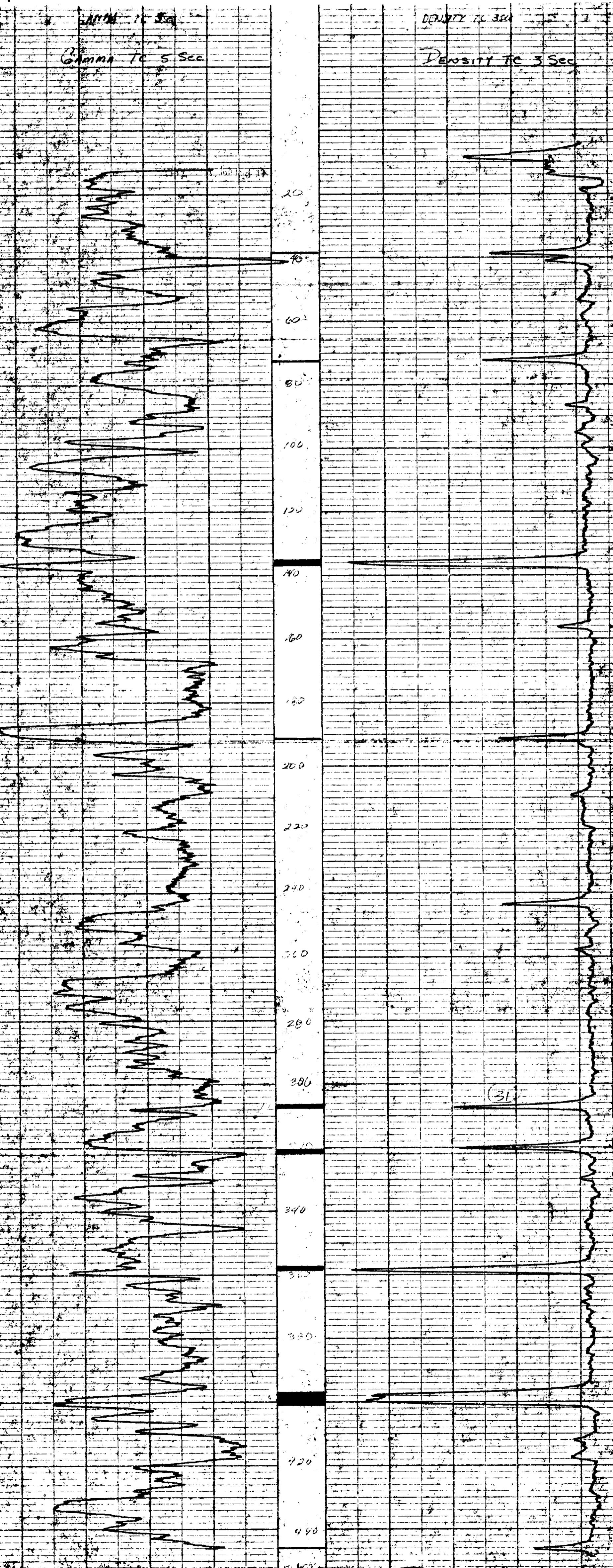
REMARKS

Gamma
 TC = 5sec.

Density
 TC = 3sec.

Reg. U.S. Pat. Off.

FO-139



P.D.

Pa - Carbon Cr - 76(3)2-2

7/6/73

P.O.

from 76(3)C-2 Bar 2

5/14 (17) 501

Widco WELL LOG

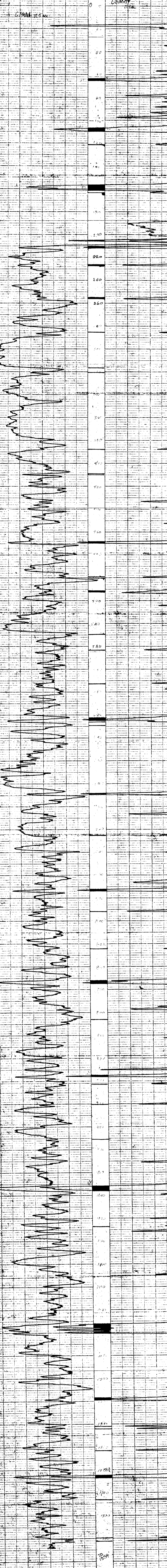
COMPANY Utah Mines Ltd. COORDINATES 367,050N
 AREA Carbon Creek N 30, 200E
 WELL 76-85 ELEVATION:
 COUNTY STATE B.C. D.F.
 K.B.
 G.L. 4059

Date	Run No. 1	Run No. 2	MUD	Run No. 1	Run No. 2
First Reading	1354		Nature		
Last Reading	2		Density		
Footage Logged	1352		Viscosity		
Bottom (Driller)	1354		Resistivity		
Casing (From Log)			Res. @ 8ft		
Casing (Driller)			pH		
Casing Size			Circ. Temp.		
Bit Size	1 1/2"		8 ft Temp.		
Bit Size			Logged by	B. Lum	
			Witnessed by	K. Currie	

REMARKS

Gamma TC = 5 sec. Density TC = 1 sec.

* Reg. U.S. Pat. Off.



ID 1354

R-2

UTAH 76-85
COAL

GAMMA DENSITY

Widco WELL LOG

COMPANY Utah Mines Ltd.	COORDINATES N 367,050N E 511,200E
AREA Carbon Creek	ELEVATION D.F. K.B. G.L. 4050
WELL 76-85	
COUNTY STATE B.C.	

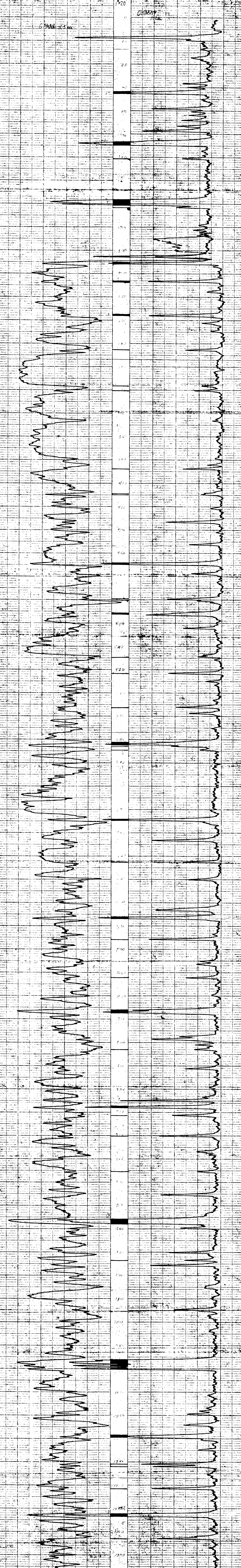
NO. 1001	DATE	TIME

Date	Run No. 1	Run No. 2	MUD	Run No. 1	Run No. 2
First Reading	1354		Nature		
Footage Logged	2		Density		
Bottom (Driller)	1354		Viscosity		
Casing (From Log)			Resistivity		
Casing (Driller)			Res. @ BHT		
Casing Size			pH		
Bit Size			Circ. Temp.		
Bit Size			B.H. Temp.		
			Logged by	R. Lum	
			Witnessed by	K. Currie	

REMARKS

501 (18)

Gamma TC = 5 sec. Density TC = 3 sec.



WIDCO DIVISION OF GERHART OWEN INDUSTRIES, FORT WORTH, TEXAS
 CHART NO. 102
 MADE IN U.S.A.
 WIDCO DIVISION OF GERHART OWEN INDUSTRIES, FORT WORTH, TEXAS
 CHART NO. 103
 MADE IN U.S.A.
 WIDCO DIVISION OF GERHART OWEN INDUSTRIES, FORT WORTH, TEXAS
 CHART NO. 104
 MADE IN U.S.A.
 WIDCO DIVISION OF GERHART OWEN INDUSTRIES, FORT WORTH, TEXAS
 CHART NO. 105
 MADE IN U.S.A.
 WIDCO DIVISION OF GERHART OWEN INDUSTRIES, FORT WORTH, TEXAS
 CHART NO. 106
 MADE IN U.S.A.
 WIDCO DIVISION OF GERHART OWEN INDUSTRIES, FORT WORTH, TEXAS
 CHART NO. 107
 MADE IN U.S.A.
 WIDCO DIVISION OF GERHART OWEN INDUSTRIES, FORT WORTH, TEXAS
 CHART NO. 108
 MADE IN U.S.A.
 WIDCO DIVISION OF GERHART OWEN INDUSTRIES, FORT WORTH, TEXAS
 CHART NO. 109
 MADE IN U.S.A.
 WIDCO DIVISION OF GERHART OWEN INDUSTRIES, FORT WORTH, TEXAS
 CHART NO. 110
 MADE IN U.S.A.

P. 19

7/14 (19) 501

W. C. S. CO. OR T. C. S. CO. 76-87

Widco WELL LOG

COMPANY: Utah Mines Ltd.
 AREA: Carbon Creek
 WELL: 76-87
 COUNTY: STATE: B.C.

COORDINATES: 258,750N x
 N 53,950E
 S
 ELEVATION:
 OF:
 K.F.
 G.I. 2450'

WELL: 76-87
 COMPANY: Utah Mines Ltd.
 LOCATION: 128, 750N x 53, 950E

	Run No. 1	Run No. 2	MUD	Run No. 1	Run No. 2
Date	Oct. 18, 1976		Nature		
First Reading	1030		Density		
Last Reading	4		Viscosity		
Footage Logged	1026		Resistivity		
Bottom (Driller)	1036		Res. to BHT		
Casing (From Log)			pH		
Casing (Driller)			Circ Temp		
Casing Size	HQ 2 1/2"		8 H Temp		
Bit Size			Logged by	B. Lum	
			Witnessed by	K. Currie	

REMARKS

Gamma
 TC = 3 sec
 500 CPS

Density
 TC = 3sec.

* Reg. U.S. Pat. Off.

10-189

