

APPENDIX IIB

SUMMARY OF TEST HOLE

8

Name : Canada West #2

Date : December 1971.

Location : Upper Chowade River
Northeastern B.C.

Co-Ordinates:

Elevations : Ground 3450' (estimated)

Operator : Canada West Petroleum
Ltd. (N.P.L.)

Contractor : Canadian Longyear Ltd.

Spud In: Nov. 2, 1971

Completed Drilling: Nov. 11, 1971

Total Depth: 1548'

Coal Occurences : Nil

Completion Date : Nov. 11, 1971

Formation:
Buckinghamhorse Fm.

Surface Casing: NX 0-36

Plugs : 5' Plug (wooden)

Logs : Nil

Note: Hole drilled vertically.

Cores : 0 - 1548

Core Analyses : Nil



NOTE: Map compiled from all available data, in particular:
 Irsh, E.J.W. Halfway River Map Area, British Columbia,
 G.S.C. Paper 49-11.
 Starr, D.F. Femia and Mines Strata North of Peace River,
 Facies of Northeastern British Columbia,
 G.S.C. Paper 67-19.

LEGEND

- LOWER CRETACEOUS**
- Ka Siwash Formation: fine-grained sandstone.
 - Kb Buckinghorse Formation: siltstone shale, siltstone, minor sandstone (marine).
- BULLHEAD GROUP**
- Kc Gething Formation: fine-grained sandstone, minor shale, coal, and conglomerate (marine and non-marine).
 - Kcd Codswain Formation: massive conglomerate and conglomeratic sandstone.
- MINNES GROUP**
- Kb1 Beattie Peaks and (?) Younger Beds: interbedded fine-grained sandstone and siltstone (marine).
 - Kmo Monach Formation: massive argillaceous sandstones (may include some Jurassic beds).
- JURASSIC**
- Jfa Femia Formation: argillaceous and siltstone shales, siltstone, minor sandstone (marine).
- TRIASSIC AND OLDER ROCKS**
- Tr shale, calcareous silty siltstone, and limestone dolomite and chert.

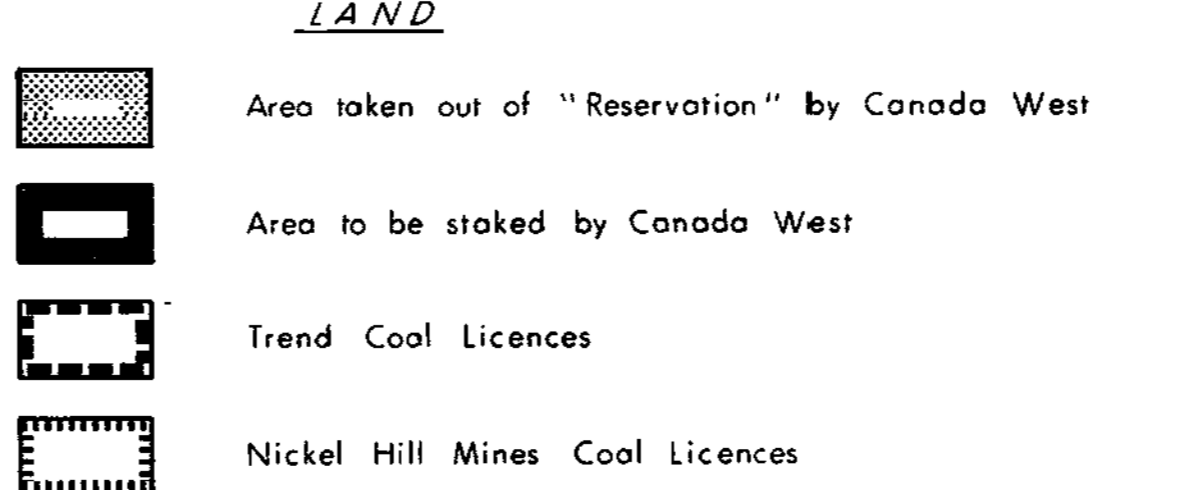
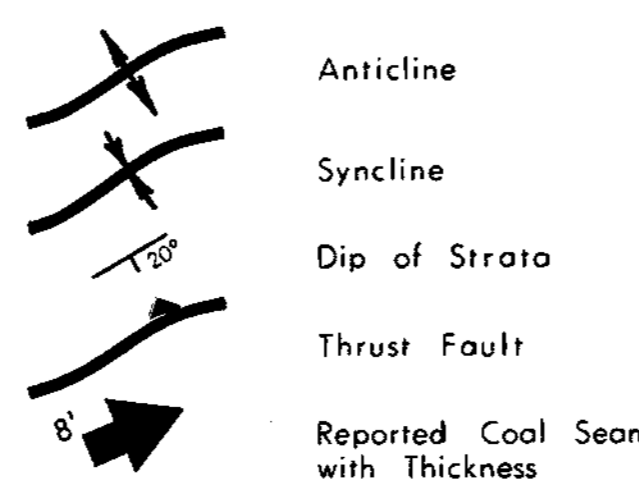
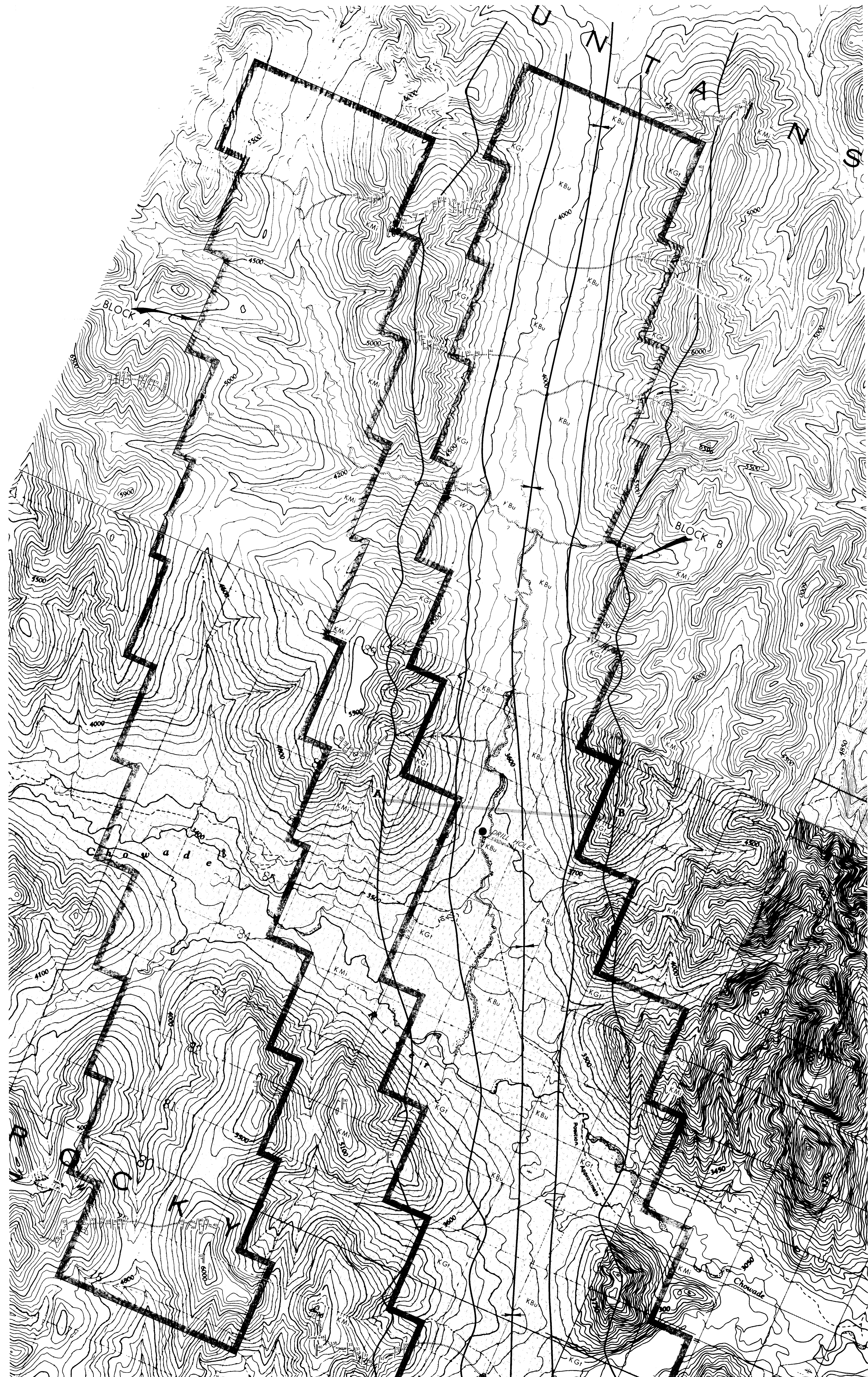


Figure 5

Pr-Pr.c.p. 72 (2)A
 CANADA WEST PETROLEUM LTD. N.P.L.
PEACE RIVER COAL AREA
STAKING PROGRAM
 MARCH 1971
 SCALE 1:50,000
 PAUL DYSON CONSULTANTS



88

- Ground Traverse
- Formation Boundary Of Beds
- Bedding — Inclined, Vertical, Horizontal, Overturned
- Strike & Dip (Published)
- Anticlinal Axis Showing Plunge
- Synclinal Axis Showing Plunge
- Fault
- Coal Occurrence With Note
- Line Of Cross Section
- Coal Sample Location

- LOWER CRETACEOUS
 - KBu Buckingham Formation
 - KGr Gething Formation
- LOWER CRETACEOUS & OLDER ROCKS
 - KM Cadomin, Beattie Peaks & Montezith Formation, Fernie Group & Triassic Rocks
- Block of Coal Licences

PR-P.R.C.P. 72 (2) A

CANADA WEST PETROLEUMS LTD. N.P.L.

PEACE RIVER COAL PROJECT

DISTRIBUTION OF GETTING FORMATION

BLOCK A

BLOCK B

(North Part) **580**

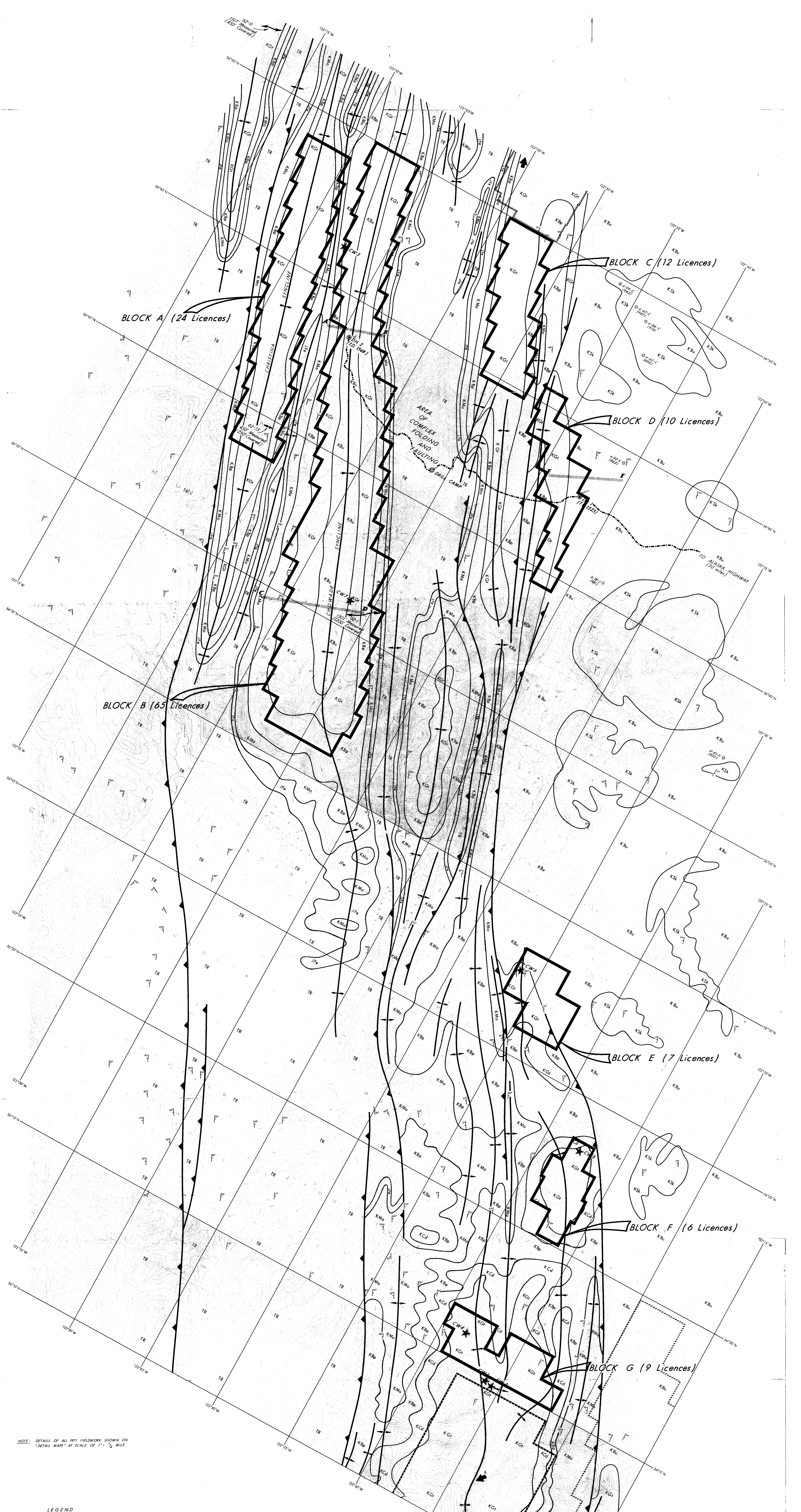
Oct. 1971

SCALE: 8 INCHES = 1 MILE (APPROX)

PAUL DYSON CONSULTANTS & HOLDINGS LTD.

(TOPOGRAPHY FROM 1:50,000 MAPPING PUBLISHED BY DEPT. OF ENERGY, MINES & RESOURCES)

Figure 7



BLOCK A (24 Licences)

BLOCK C (12 Licences)

BLOCK D (10 Licences)

BLOCK B (65 Licences)

BLOCK E (7 Licences)

BLOCK F (6 Licences)

BLOCK G (9 Licences)

AREA OF COMPLEX FOLDING AND FAULTING OF DEEP CAMP

TO ALBERTA HIGHWAY (30 miles)

NOTE: DETAILS OF ALL 1971 FIELDWORK SHOWN ON "DETAIL MAPS" AT SCALE OF 1" = 1/4 MILE.

LEGEND

- LOWER CRETACEOUS**
- KSA Sixteen Formation - fine-grained sandstone
- KBU Buckingham Formation - siltstone shale, siltstone, minor sandstone (terrestrial)
- BILLHEAD GROUP**
- KGI Gething Formation - fine-grained sandstone, minor shale, coal, and conglomerate (marine and non-marine)
- KCD Codman Formation - massive conglomerate and sandstone
- MINNESOTA GROUP**
- KBP Beattie Pass and (?) Younger Beds - interbedded fine-grained sandstone and shale (terrestrial, may include Monach and younger beds)
- KMO Monach Formation - massive quartzitic sandstones (may include some Jurassic beds)
- JURASSIC**
- JFA Fernie Formation - phyllosilic and siltstone shales, siltstones, minor sandstones (marine)
- TRIASSIC AND OLDER ROCKS**
- TR Shale, calcareous gray siltstones, and limestone (shale and chert)

- Drill Hole
- ⊙ Well, Penetrating Gething Fm. with Thickness
- Line of Cross Section
- Measured Section of Gething Fm. with GSC Section No.
- ↖ Anticline
- ↘ Syncline
- Dip of Strata - Published
- ⊥ Thrust Fault
- ⊥ Reported Coal Seam with Thickness
- ★ CW 1 Sample Location

- ▭ Canada West Coal Licences
- ▭ Anishnawbe Coal Co. Coal Licences
- ▭ Utah Coal Licences
- ▭ Nickel Hill Mines Coal Licences

Figure 6

PR-PR-C.P. TR. (C)A
CANADA WEST PETROLEUM LTD. N.P.L.

PEACE RIVER COAL AREA
PROJECT MAP

JAN. 1972 SCALE 1:50,000
SCALE IN METERS

PAUL DYSON CONSULTANTS

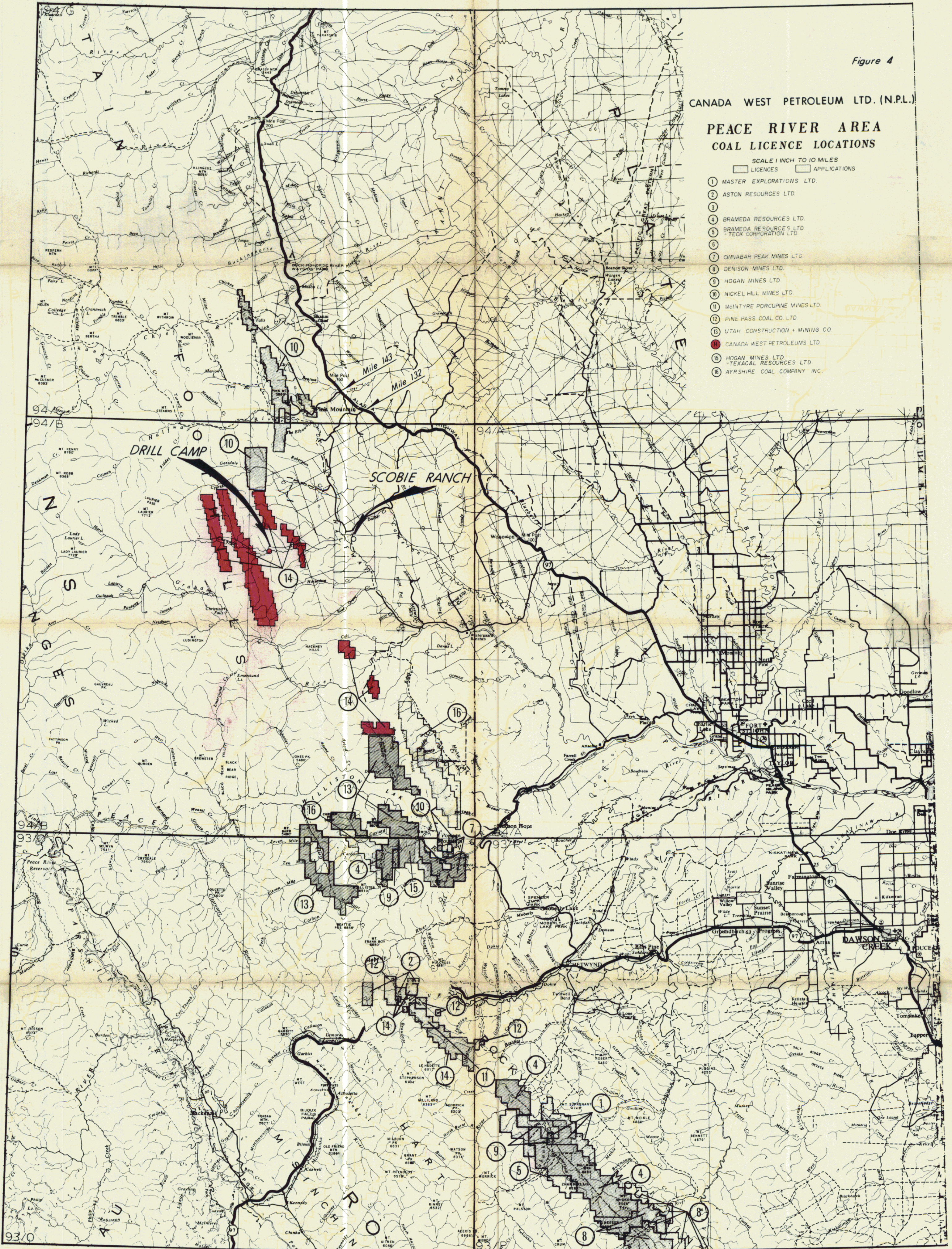
Figure 4

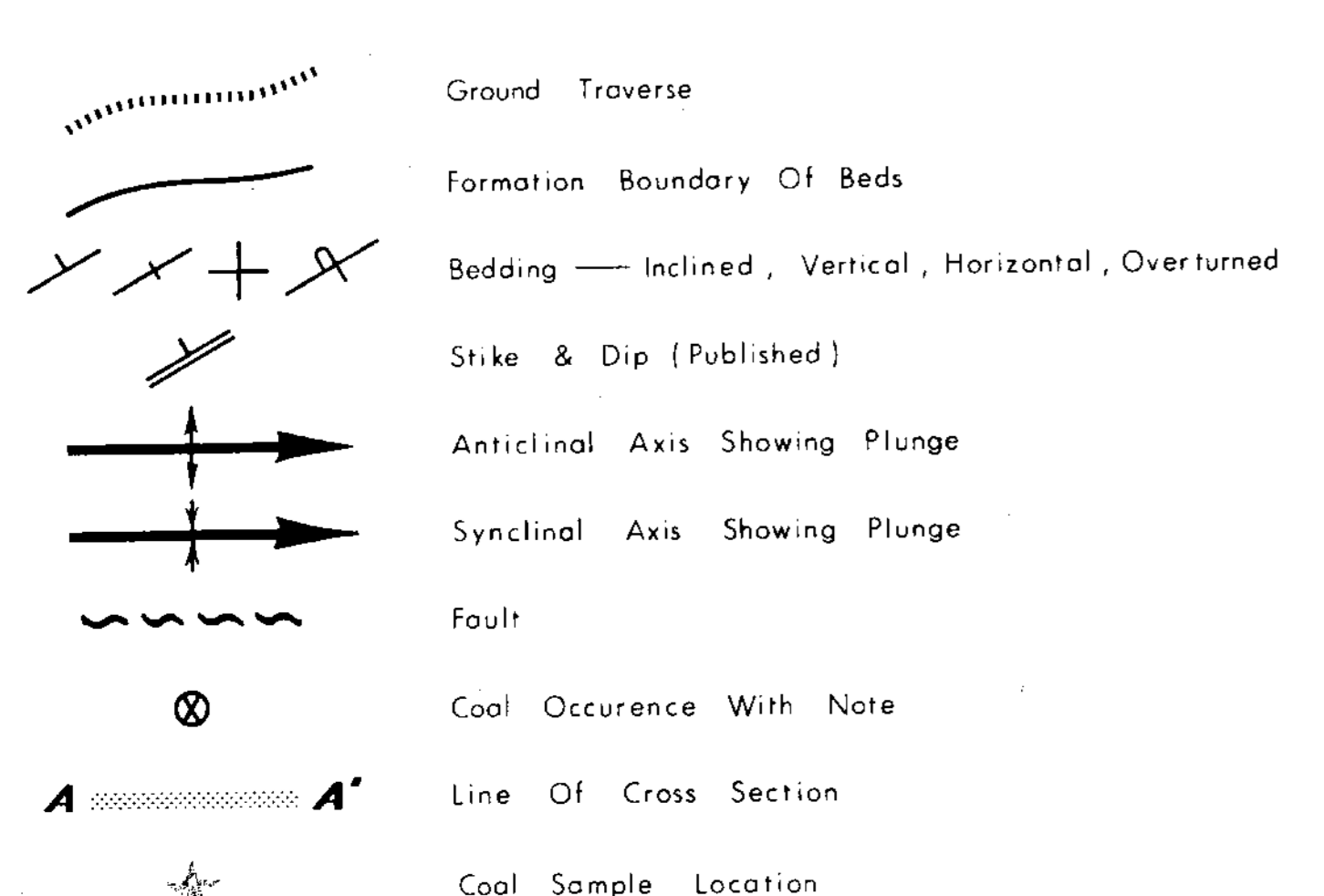
CANADA WEST PETROLEUM LTD. (N.P.L.)

PEACE RIVER AREA
COAL LICENCE LOCATIONS

SCALE 1 INCH TO 10 MILES
LICENCES APPLICATIONS

- ① MASTER EXPLORATIONS LTD.
- ② ASTON RESOURCES LTD.
- ③
- ④ BRAMEDA RESOURCES LTD.
- ⑤ BRAMEDA RESOURCES LTD
- TECK CORPORATION LTD.
- ⑥
- ⑦ CANNABAR PEAK MINES LTD.
- ⑧ DENISON MINES LTD.
- ⑨ HOGAN MINES LTD.
- ⑩ NICKEL HILL MINES LTD.
- ⑪ McINTYRE PORCUPINE MINES LTD.
- ⑫ PINE PASS COAL CO. LTD.
- ⑬ UTAH CONSTRUCTION + MINING CO.
- ⑭ CANADA WEST PETROLEUMS LTD.
- ⑮ HOGAN MINES LTD.
- TEXACAL RESOURCES LTD.
- ⑯ AYRSHIRE COAL COMPANY INC.





| | |
|--------------------------------|---|
| LOWER CRETACEOUS | |
| | Buckingham Formation |
| | Getting Formation |
| LOWER CRETACEOUS & OLDER ROCKS | |
| | Cadomin, Beattie Peaks & Monteith Formation, Fernie Group & Triassic Rocks. |
| | Outline Of Block Of Coal Licences |

PR-P.R.C.P. 72(2)A
 CANADA WEST PETROLEUMS LTD. N.P.L.

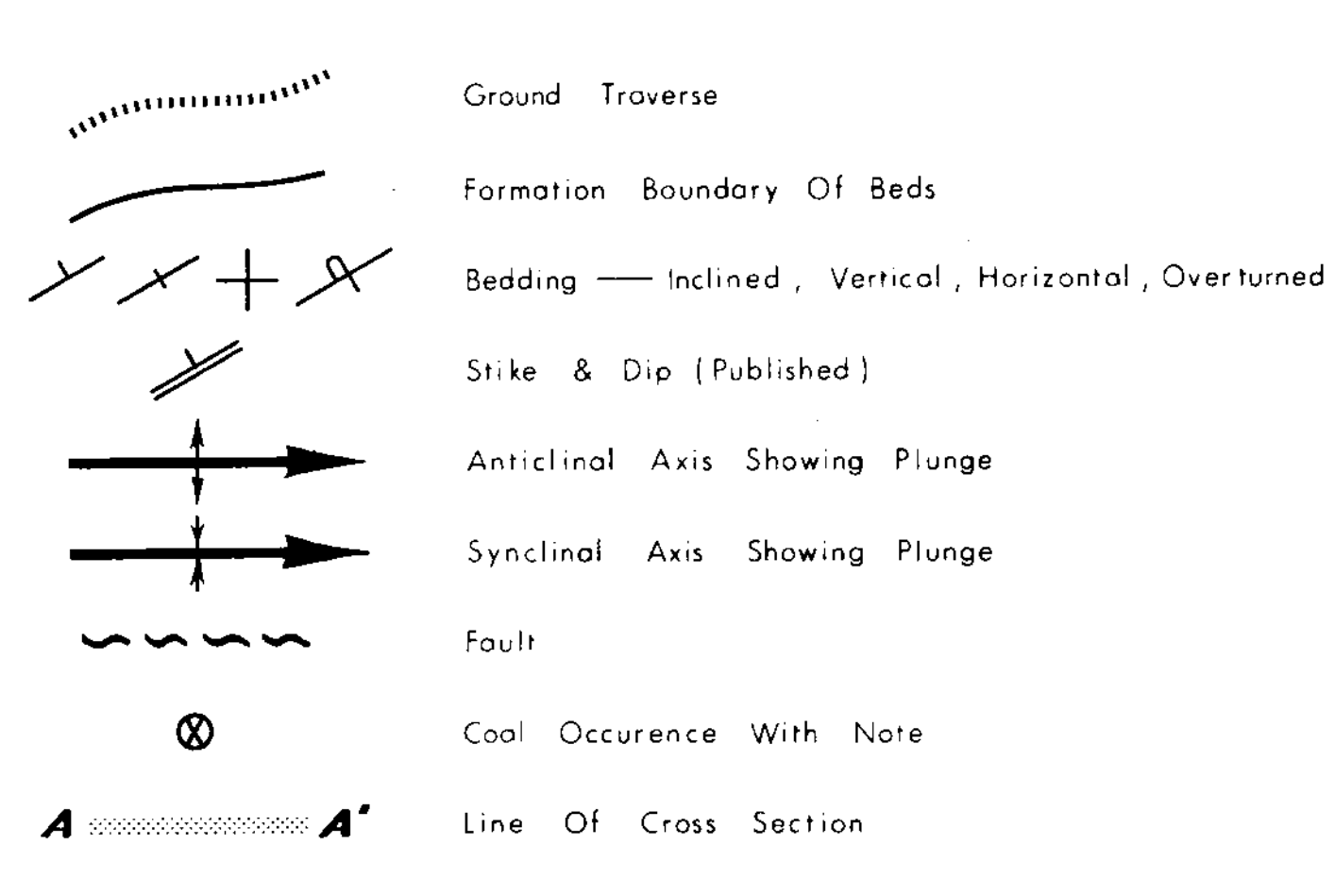
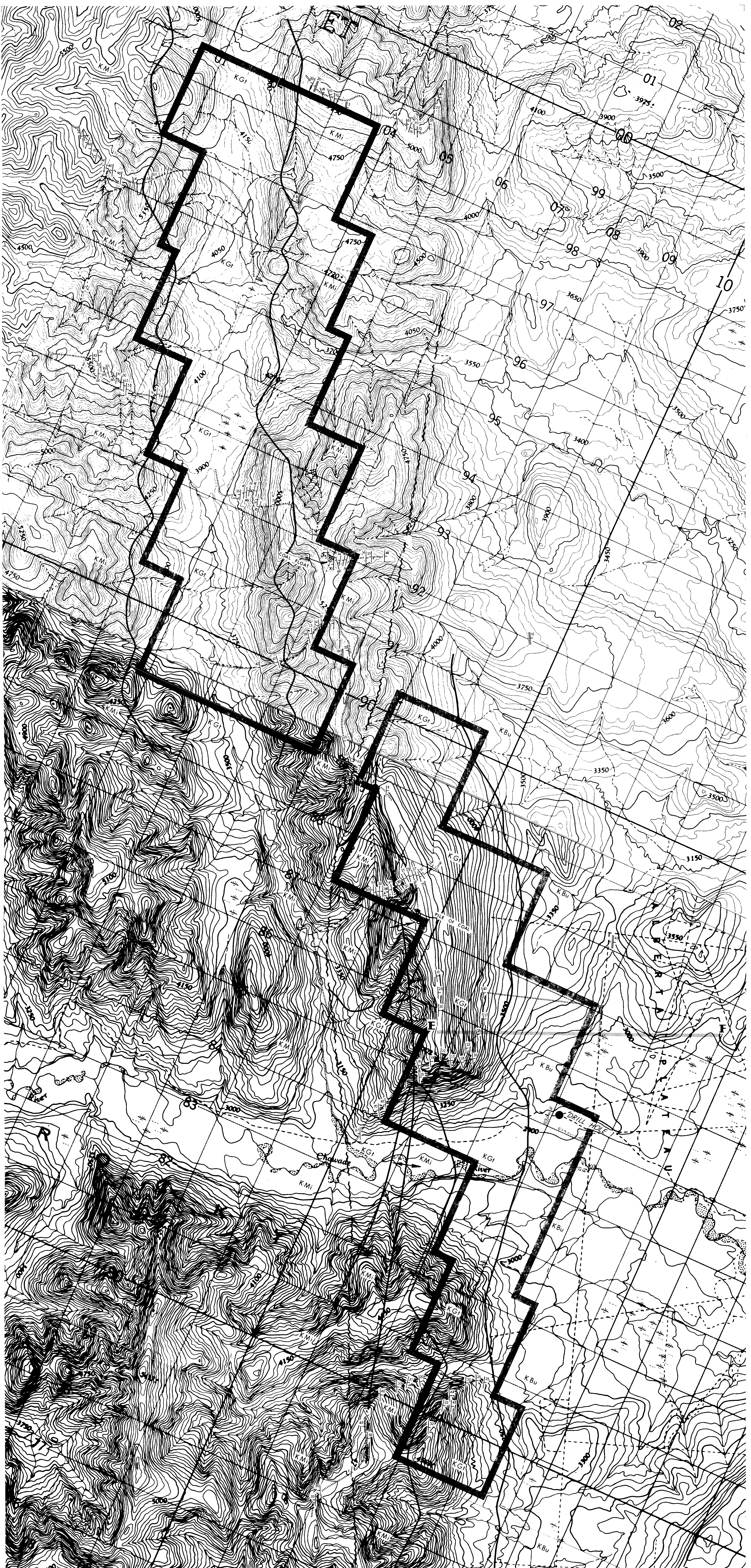
PEACE RIVER COAL PROJECT
 DISTRIBUTION OF GETTING FORMATION
BLOCK B
 (South Part) **580**

Oct 1971

SCALE: 4 INCHES = 1 MILE (APPROX.)

PAUL DYSON CONSULTANTS & HOLDINGS LTD.

(TOPOGRAPHY FROM 1:50,000 MAPPING PUBLISHED BY DEPT. OF ENERGY, MINES & RESOURCES)

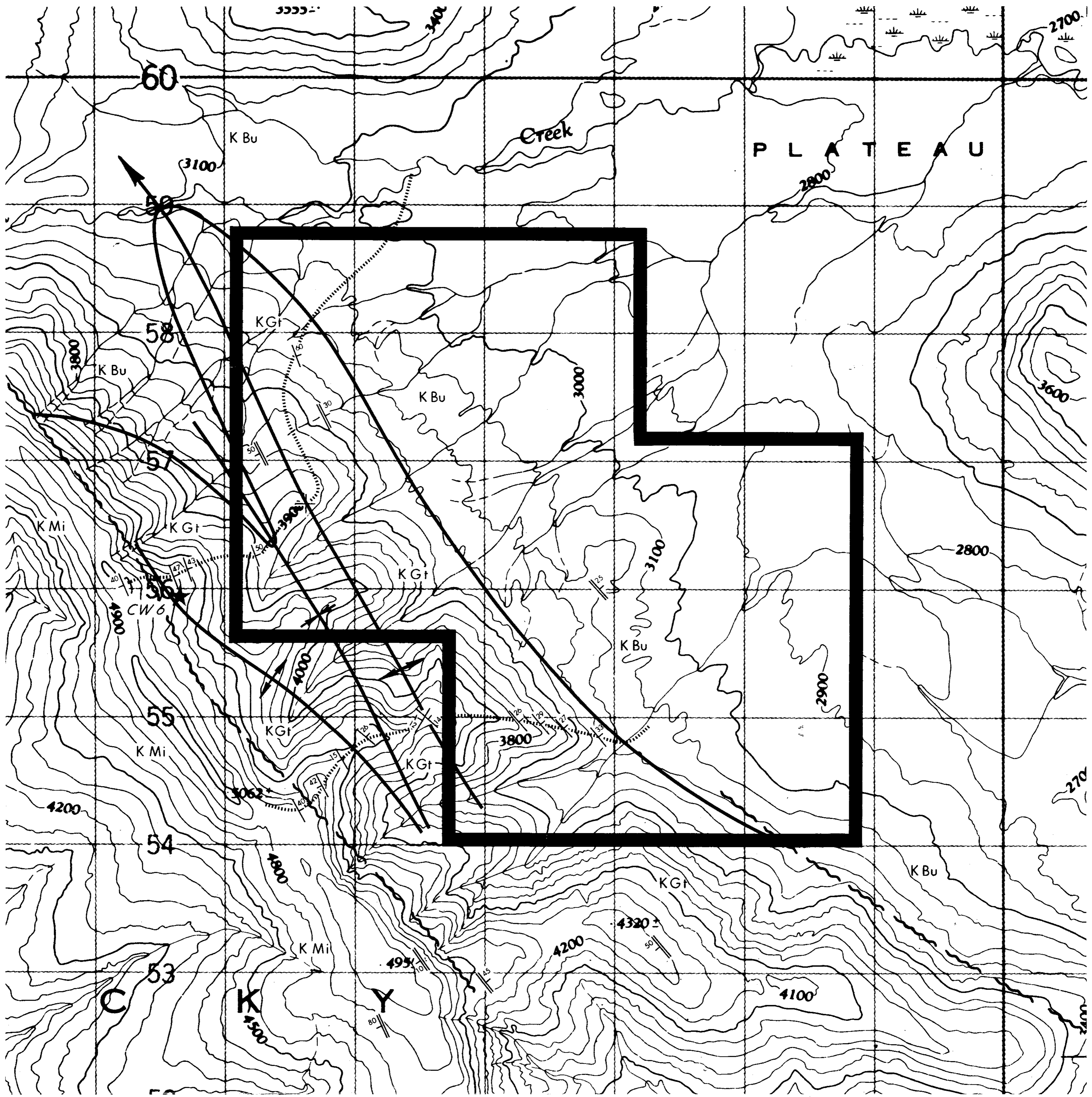


- LOWER CRETACEOUS
- KBu Buckinghorse Formation
 - KGt Gething Formation
- LOWER CRETACEOUS & OLDER ROCKS
- KMi Cadomin, Beattie Peaks & Monteith Formation, Fernie Group & Triassic Rocks
- Outline Of Block Of Coal Licences

PR-PRCP 71 (2) A
 CANADA WEST PETROLEUMS LTD. N.P.L.
PEACE RIVER COAL PROJECT
 DISTRIBUTION OF GETHING FORMATION
BLOCK C
BLOCK D 580
 Oct. 1971
 SCALE 4 INCHES = 1 MILE (APPROX.)
 PAUL DYSON CONSULTANTS & HOLDINGS LTD.

(TOPOGRAPHY FROM 1:50,000 MAPPING PUBLISHED BY DEPT. OF ENERGY, MINES & RESOURCES)

Figure 9



PR-P.R.C.P. 72(E)A

CANADA WEST PETROLEUMS LTD. N.P.L.

PEACE RIVER COAL PROJECT

DISTRIBUTION OF GETHING FORMATION

BLOCK E

Oct. 1971

SCALE: 4 INCHES = 1 MILE (APPROX)

PAUL DYSON CONSULTANTS & HOLDINGS LTD.

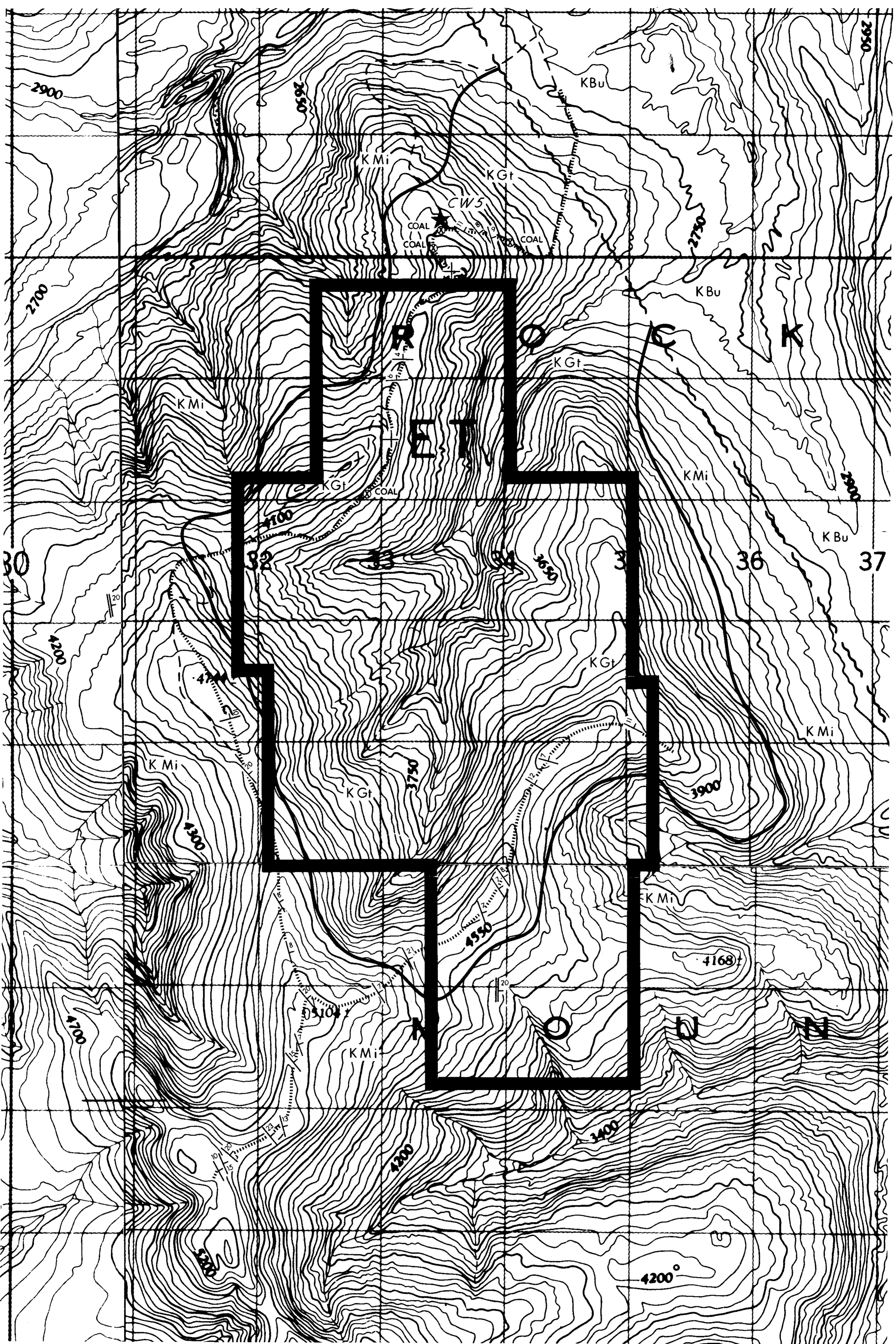
580



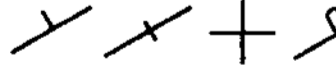
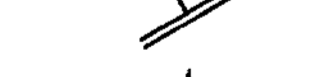





- Ground Traverse
- Formation Boundary Of Beds
- Bedding — Inclined, Vertical, Horizontal, Overturned
- Strike & Dip (Published)
- Anticlinal Axis Showing Plunge
- Synclinal Axis Showing Plunge
- Fault
- Coal Occurrence With Note
- Coal Sample Location

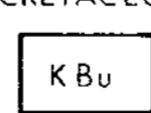


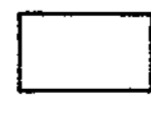
- LOWER CRETACEOUS
 - K Bu Buckingham Formation
 - K Gt Gething Formation
- LOWER CRETACEOUS & OLDER ROCKS
 - K Mi Coadmin, Beattie Peaks & Monteith Formation, Fernie Group & Triassic Rocks.
- Outline Of Block Of Coal Licences

Figure 10

(TOPOGRAPHY FROM 1:50,000 MAPPING PUBLISHED BY DEPT. OF ENERGY, MINES & RESOURCES)



-  Ground Traverse
-  Formation Boundary Of Beds
-  Bedding — Inclined, Vertical, Horizontal, Overturned
-  Strike & Dip (Published)
-  Anticlinal Axis Showing Plunge
-  Synclinal Axis Showing Plunge
-  Fault
-  Coal Occurrence With Note
-  Coal Sample Location

- LOWER CRETACEOUS
 -  KBu Buckinghorse Formation
 -  KGt Gething Formation
- LOWER CRETACEOUS & OLDER ROCKS
 -  K Mi Cadomin, Beattie Peaks & Monteith Formation, Fernie Group & Triassic Rocks.
-  Outline Of Block Of Coal Licences

PR-P.R.C.P. 72(2)A


CANADA WEST PETROLEUMS LTD. N.P.L.

PEACE RIVER COAL PROJECT

DISTRIBUTION OF GETHING FORMATION

BLOCK F

Oct. 1971

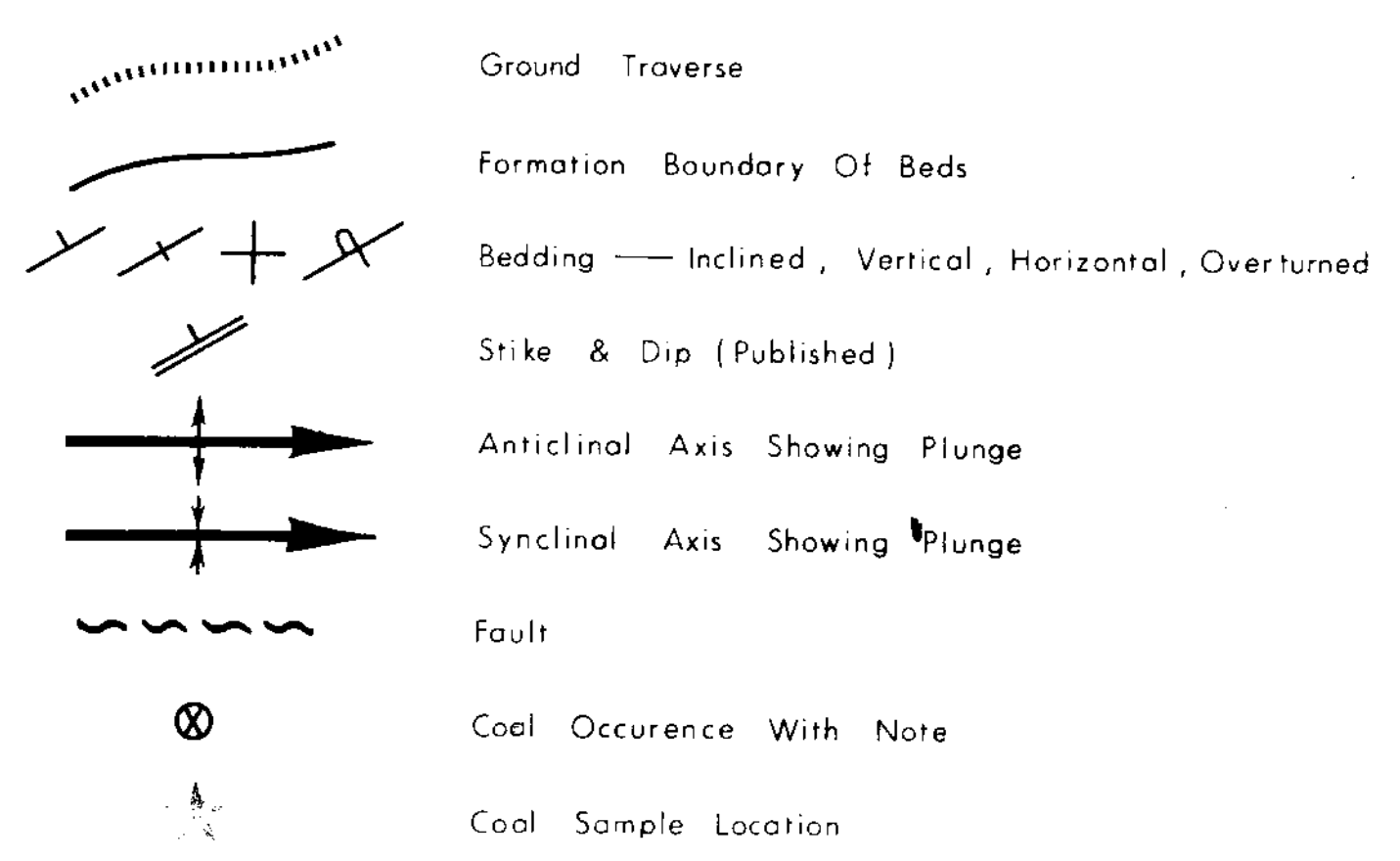
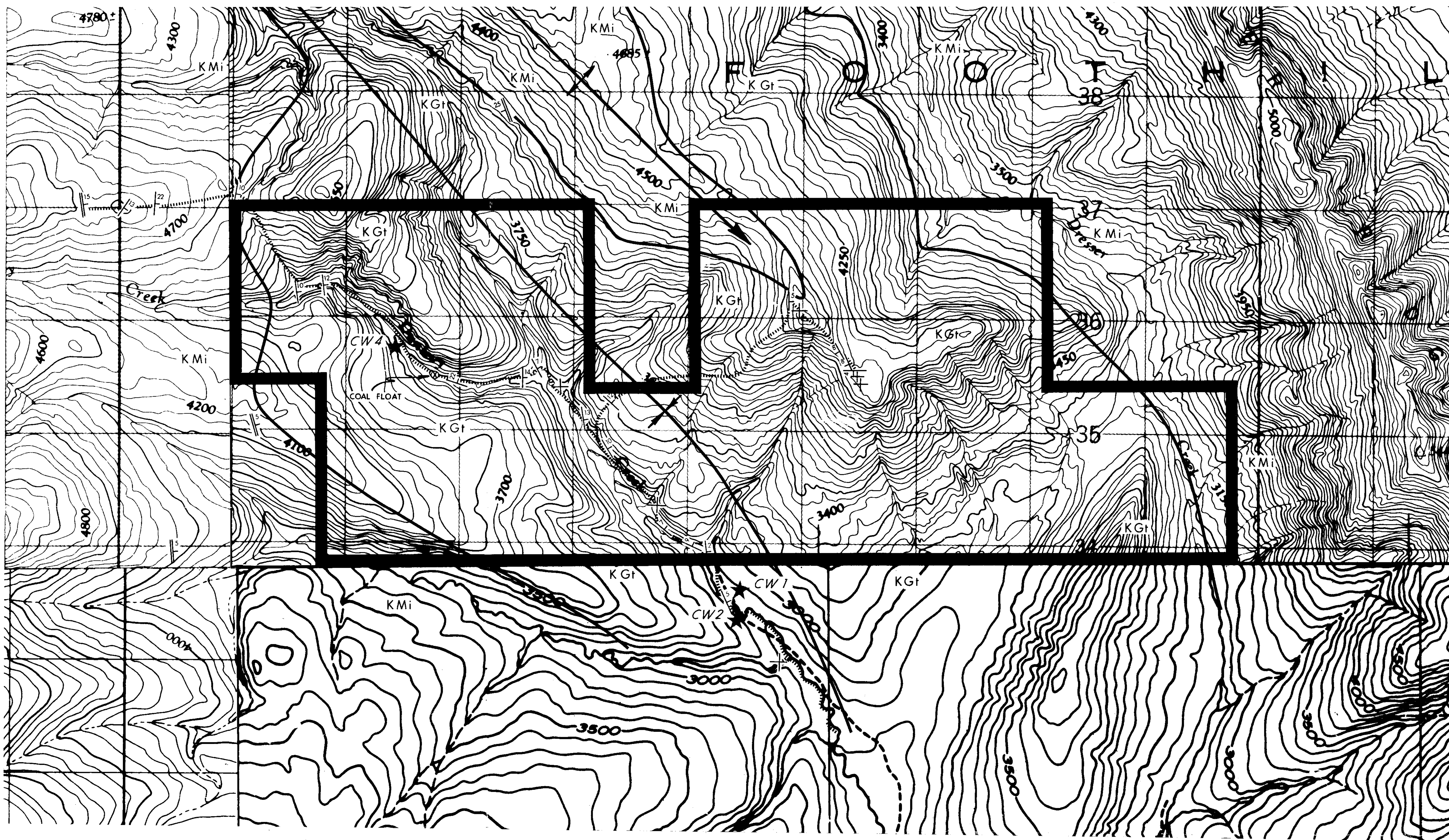
0  1
SCALE: 4 INCHES = 1 MILE (APPROX.)

PAUL DYSON CONSULTANTS & HOLDINGS LTD.

580

(TOPOGRAPHY FROM 1:50,000 MAPPING PUBLISHED BY DEPT. OF ENERGY, MINES & RESOURCES)

Figure 11



| | |
|--|---|
| LOWER CRETACEOUS | |
| K Bu | Buckingham Formation |
| K Gt | Gething Formation |
| LOWER CRETACEOUS & OLDER ROCKS | |
| K Mi | Cadomin, Beattie Peaks & Monteith Formation, Fernie Group & Triassic Rocks. |
| | Outline Of Block Of Coal Licences |

PR-P.R.C.P. 12(2)A

CANADA WEST PETROLEUMS LTD. N.P.L.

PEACE RIVER COAL PROJECT

DISTRIBUTION OF GETTING FORMATION

BLOCK G

Oct. 1971

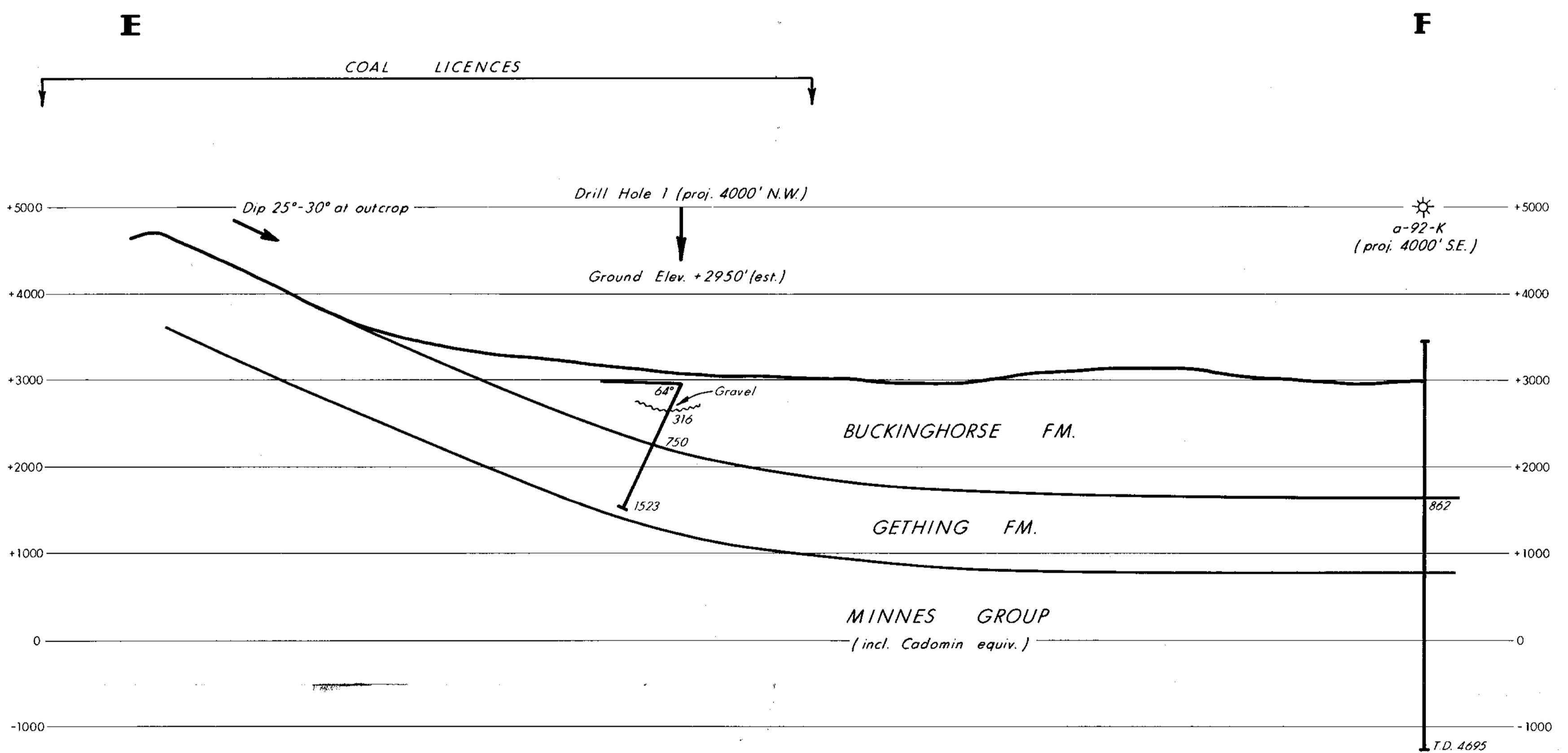
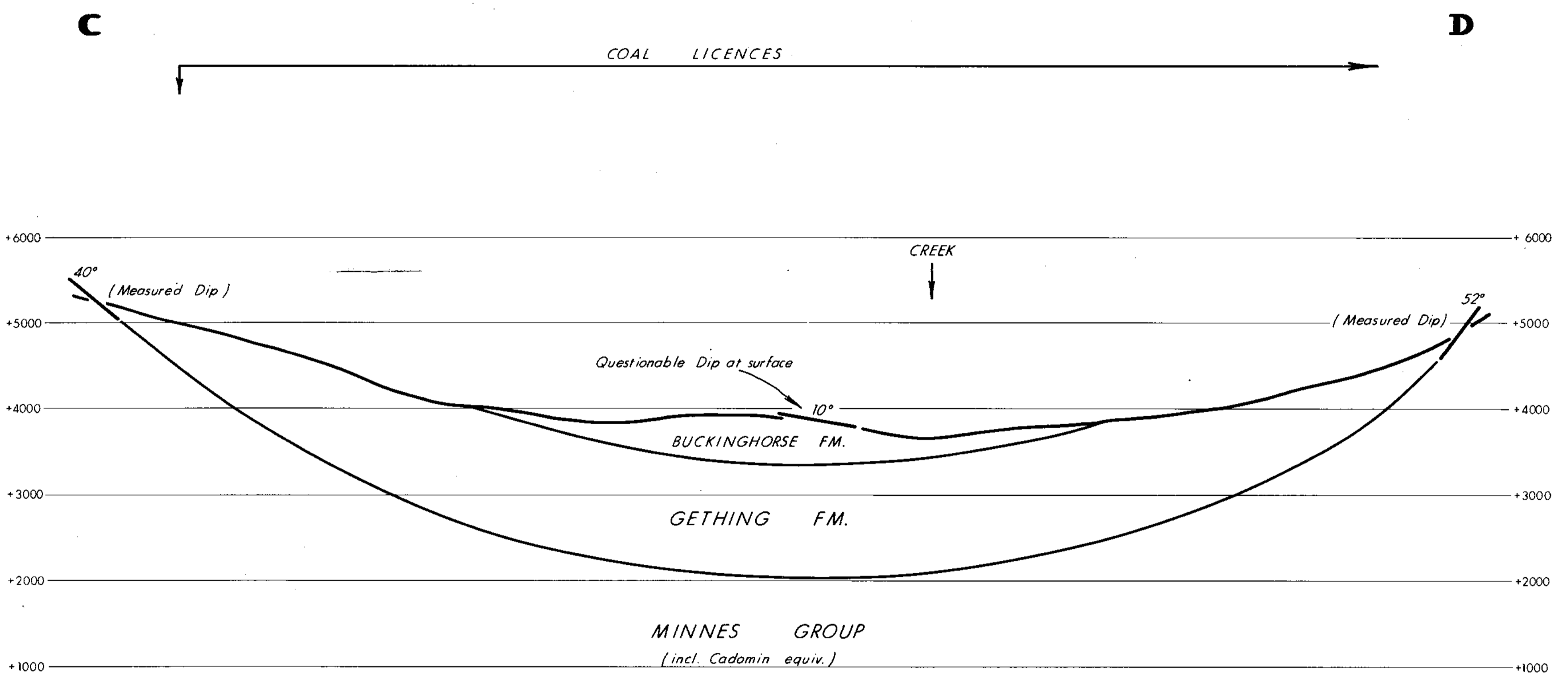
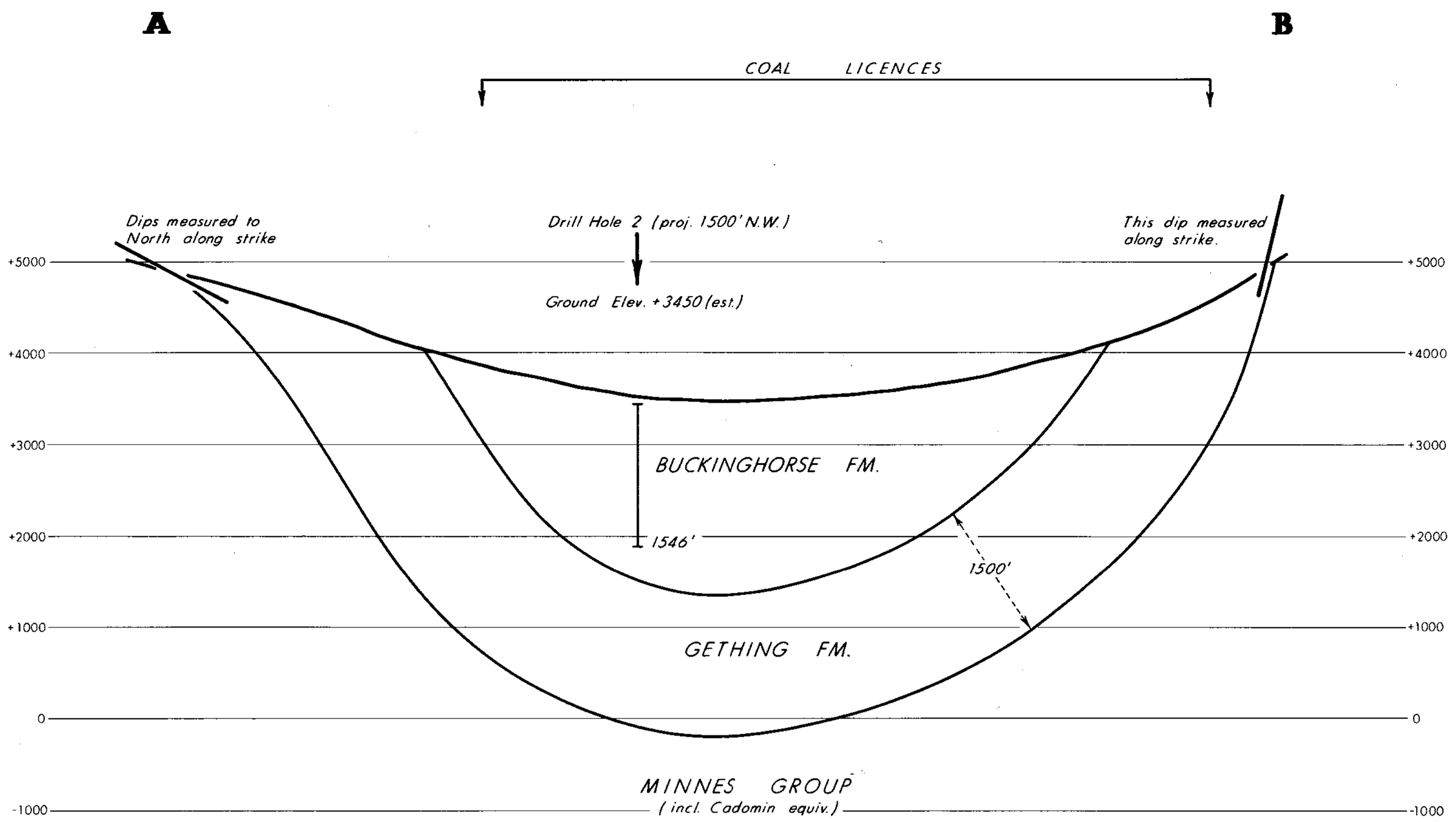
SCALE: 4 INCHES = 1 MILE (APPROX.)

PAUL DYSON CONSULTANTS & HOLDINGS LTD.

580

(TOPOGRAPHY FROM 1:50,000 MAPPING PUBLISHED BY DEPT. OF ENERGY, MINES & RESOURCES)

Figure 12



PR-P.R.C.P. 72(2)A Figure 13

CANADA WEST PETROLEUM LTD. N.P.L.

PEACE RIVER COAL PROJECT

CROSS SECTIONS
A-B, C-D & E-F

JAN. 1972

SCALE: Horizontal & Vertical 1 Inch = 1000 Feet

PAUL DYSON CONSULTANTS & HOLDINGS LTD.

580