

PR-QUINETTE ~~71(3)A~~ 71(3)A

QUINETTE PROJECT
WOLVERINE AREA
(DRILL LOGS)

G.P. GORMLEY (BOOK B-1) APRIL 27th 1972

597

HOLE No: D-5142 SHEET No: 1

DENISON MINES LIMITED

Diamond Drill Core Log

DATE BEGUN: Sept 24/71 DEPTH: _____ BEARING: _____ UTIM: 127049
 DATE FINISHED: Sept 3/71 ELEV. COLLAR: Two Feet TOTAL DEPTH: 1022 COAL LICENSE: _____
 LAT.: 53° 54' 30" N 121° 10' W HOLE ANGLE: Vertical LOGGED BY: R.G.S. CORE SIZE: 1 1/2" Diameter

B.C.A.	UNIT		UNIT THICKNESS		COAL SHEET	DESC. LOG	MARKER	DESCRIPTION	RECOVERY			
	From	To	Thick.	True Cos. Sect.					Lot	Ft.	Ft. Rec.	%
	CRSED to	60 Feet	60'	60'	W. Cassia	1 1/2" 20ft	1 1/2" 20ft	Reservoir log 1 1/2" 20ft				
200	0'	60'	60'	60'	NOTE			Overburden Mixed lithology, s.s. + shales. No carbonaceous matter reported or seen.	67-77	10	7.6	96
200	60'	73'	13'	16'	Scale change			Blue black to black finely laminated shales. Upper 2' slightly sandy. Fine grained to very fine grained sandstones have black shale clasts; small, compact, worm burrows filled with shale, otherwise structureless, grades to grey silty shale with black to blue black shale partings, erosional boundaries, solid core, two cleavages 45°, pyrite on cleavage surfaces.				
200	73'	85'	8'	7.5'				Blue grey shale, interbedded ss fine to medium grained s.s. and clasts to 83' glauconitic in part. Lower portion 20% sandstone, gradational boundary with erosional contacts.	77-82	10	9.8	98
150	85'	112'	27'	26'				Glauconitic sandstone, fine grained becoming coarse grained with sharp erosional boundary at 89.8 with sand filled matrix of shale, matrix blue black darker than shales reported, gradational sequentially with shale partings (shale contacts).	87-99	10	9.4	94
								scalloped and erosional shale partings 1/10-2/10 inches, with s.s. cyclothemichous 3-4"	97-107	10	10	100
150	112'	152.5'	40.5'	39'				Siltstone and Mudstone, interbedded with sand layers 1/16-1/8, medium grained and also interbedded shale flag structures; Siltstones Mudstone poorly laminated, contacts with s.s. slightly scalloped sandstone bands 4" to 2 feet apart.	107-117	10	9.0	90
									117-127	10	9.8	98
									127-137	10	9.9	99
									137-147	10	9.9	99
									147-152	10	9.8	98
150	152.5'	172'	19.5'	19.5'								

GEOLOGICAL BRANCH
ASSESSMENT REPORT

DESCRIPTION NEXT SHEET

00597
COK
May 2/86

HOLE No: D-7112 SHEET No: 4

DENISON MINES LIMITED
Diamond Drill Core Log

DATE BEGUN: Sept 24/21 DEPTH: 478.8 BEARING: _____ UTM: 127049
DATE FINISHED: _____ ELEV. COLLAR: 27 TOTAL DEPTH: _____ COAL LICENSE: _____
HOLE ANGLE: 92° LOGGED BY: Alce CORE SIZE: 1 1/2" x 1"

B.C.A.	UNIT		UNIT THICKNESS		COAL SHEET	DESC. LOG 17-28	MARKER	DESCRIPTION	RECOVERY				
	From	To	Thick.	True					Int.	Ft.	Ft. Rec.	%	
									897-907	10'	10'	100	
									907-917	10'	9.6	96	
							410	Faulted 45° to B.E.H.					
							421	Increase in disseminated pyrite + worm burrow filled.	917-927	10'	9.3	93	
							422	Fault zone 4" wide 0° top, 45° Bottom. NOTE: loss OF DIAMOND DUE TO CIRCUMSTANCES					
							435	Light gray chalky ash layer 4 1/2" thick sharp straight boundaries	927-937	10'	9.99	100	
							441	Light gray white chalky ash layer 2 1/2" thick platy but rounded shale clasts bottom contact sharp	937-947	10'	9.99	100	
							451	3/10" light gray white chalky ash layer sharp contact	947-957	10'	9.99	100	
							456	7/2" light gray ash layer cusped basal boundary	957-967	10'	9.99	100	
15°	468.5'	470.7'	2.2'	2.1'			467.5	1" Tannish brown bentonitic ash layer pebbles in lower portion irregular boundary to					
							468.2	Conglomerate + coarse grained sandstone, in blue black shale matrix. Conglomerate 1/2" thick cherty lithoclasts 1/2" diameter, well rounded, sub-spherical. Coarse grained sandstone 2 1/2" pebbles conglomerate.					
25°	470.7'	478.8'	8.1'	9.3'				Faulted 46.9° to 3 Quartz crystals on bed surface.					
								Interbedded black shale and sandy laminated shales. Shale units to 9" pyrite in concentrations and burrows, sandy shale sub-units, highly coarsened and disturbed boundaries common, local thixotropic faulting, rough cross bedded 105° carbonaceous layers 2-3mm thick, frayed and slipensidal at these surfaces gradational boundary to:	967-977	80'	79.98	78.7%	
								Dark blue black laminated shales. Pyrite concretions 1/2" diameter, wavy silt layers with 1/2" x 1/2" x 1/2" contacts, silt and sand clay fine grained	977-987	10'	90.9	97%	

HOLE No: 17112 SHEET No: 6

DENISON MINES LIMITED
Diamond Drill Core Log

DATE BEGUN: Sept 24/41 DEPTH: 596.3 BEARING: _____ UTIM: 127049
DATE FINISHED: _____ ELEV. COLLAR: 2' TOTAL DEPTH: _____ COAL LICENSE: _____
LAT: _____ HOLE ANGLE: VERTICAL LOGGED BY: Rice CORE SIZE: 1 1/2"

B.C.A.	UNIT		UNIT THICKNESS		COAL SHEET	DESC. LOG	MARKER	DESCRIPTION	RECOVERY			
	From	To	Thick.	True					Int.	Ft.	Ft. Rec.	%
0 ⁰	478.8	490.3	11.5	11.3				Interbedded carbonaceous shales & dirty, medium grained sandstone, black, dk. grey, in places, stratified lamination, contacts straight but truncated at bedding	487-489	7.0	7.0	70%
	490.5	499.1	8.6	9.4			488.5 488.5	Shker-sided, fracture planes (C.A. 9° quartz veins), gradational boundary to:	487-490	9	6.3	70%
	499.1	501.8	2.7	2.2	BKX32			Black structureless massive carbonaceous shale, carbonaceous material increasing towards bottom of unit.				
	501.8	504	2.2	2.2				gradational to coal				
	504	506	2	2				Coal shale				
	506	512.6	6.6	8.6				Carbonaceous shale, lenticular carbonaceous material toward bottom, becoming silty, to 51' soft crushed cone.	506-512	6	4.6	78%
	512.6	514.6	2	2				Interbedded carbonaceous sandstone and shales	gradational to			
	514.6	517	2.4	2.4				5' fine grained, convoluted, soft sediment structures	gradational to			
	517	527	10	10				Carbonaceous shale, silty, in part, brown to black, coal partings to 1/4" in middle of unit, straight boundary to	517-527	5	4.1	85%
	527	537	10	10				Transitional Unit, 125' sand band, convoluted bedding, grading to shales, silty, brown in color, either partly regularly with finely laminated brown mudstones, carbonaceous part, part 1/4" thick, carbonaceous material, polished and shker-sided, calcite veined in part	517-527	10	8.5	85%
	537	547	10	10				ditto band in middle.	537-547	10	9.0	90%
	547	551.4	4.4	4.4				Sandy laminated mudstone, grey brown structureless	547	10	9.0	90%
	551.4	557.4	6	5.8	BKX35			Boundary to coal, poorly coherent.	552			
	557.4	567.4	10	10				Coal based by 14' mudstone				
0	567.4	596.3	28.9	38.9				Sandstone, coarse grained, 59' gradational to medium grained, gradational to fine grained sandstone, carbonaceous layers in coarse sandstone, medium grained, calcareous, gradational to fine grained, silty, 1/4" fine grained laminated and convoluted contacts	552-567	10	9.8	98%
								Fault 568.8 (C.A. 70° Quartz veined Quartz crystals)	567-577	10	9.7	97%
									577-587	10	9.8	98%
									587-597	10	9.8	98%

HOLE No: 2212 SHEET No: 6

DENISON MINES LIMITED
Diamond Drill Core Log

DATE BEGUN: <u>Sept 24/41</u>	DEPTH: <u>715</u>	BEARING: _____	U.T.M.: <u>127 048</u>
DATE FINISHED: _____	ELEV. COLLAR: _____	TOTAL DEPTH: _____	COAL LICENSE: _____
LAT.: _____	HOLE ANGLE: _____	LOGGED BY: <u>PLC</u>	CORE SIZE: <u>404</u>

B.C.A.	UNIT		UNIT THICKNESS		COAL SHEET	DESC. LOG	MARKER	DESCRIPTION	RECOVERY			
	From	To	Thick.	True					Int.	Fr.	Fr. Rec.	%
150	618.3	618.6	22.3	21.5				Interbedded fine to medium grained sandstones and black shales, boundaries sharp but sporadic, pebbles in sandstone 2" diameter, 10% of core curved sandstones bedded in part sandstone shale units 3"-18.1"	607	70	9.8	98
								gradational to	617	10	9.8	98
150	618.6	623.7	7.1	6.8				grey medium grained sandstone, laminae with cross bedding (trough) in part, laminae with blue shale matrix sharp contact to	617	10	9.6	96
	623.7	641.4	17.7	15.25				Interbedded black shales and fine grained sandstones, burrows in shales, sandstone sandstone 3"-9" to 1" bedded trough shales 11"-10" sandy, not clean	627	10	9.7	97
								boundaries, especially and undulatory unit gradational to	637	10	9.8	98
150	641.4	646.2	4.8	4.6				black shales with convoluted sand wisps, isolated sand clasts both fine	647	10	9.7	97
	646.2	650.5	4.3	4.1				argillaceous worm burrows pyritized sandstone, medium grained, grey white, fine shale clasts, trough cross bedding	657	10	9.7	97
	650.5	691	40.5	39.0				sandy shale, sand bands 3-6" sandstones medium grained, cross bedded in part, sharp boundaries, part, disturbed sand bands decrease towards bottom of unit, 677 plus 70 predominantly mudstone at bottom of unit, upper shale - lower mudstone - blue black gradational to	667	10	9.7	97
									677	10	9.8	98%
	691	704	13	12.6				Black slate, structureless, few sand wisps in upper part, last two feet very black, pyritized worm burrows 2 1/2" diam, and sectional, with internal cusped structures	687	70	9.9	99
								gradational to	687	10	9.8	98
15	704	718.1	15.1	14.6				Medium grained grey sandstone, light blue black, matrix of shale, some shale 2 1/2" diam, blue black, pyritized worm burrows, diam. sec. section 2.3mm, gradational zone to 708 core glass	697	10	9.8	98
								gradational zone to 708 core glass	707	10	9.8	98

HOLE No: 17112 SHEET No: 7

DENISON MINES LIMITED
Diamond Drill Core Log

DATE BEGUN: <u>Sept. 24/91</u>	DEPTH: <u>833</u>	BEARING: _____	U.T.M.: <u>123049</u>
DATE FINISHED: _____	ELEV. COLLAR: _____	TOTAL DEPTH: _____	COAL LICENSE: _____
LAT.: _____	HOLE ANGLE: _____	LOGGED BY: <u>J.P.S.</u>	CORE SIZE: <u>1.5</u>

B.C.A.	UNIT		UNIT THICKNESS		COAL SHEET	DESC. LOG MARKER	DESCRIPTION	RECOVERY			
	From	To	Thick.	True				Int.	Ft.	Ft. Rec.	%
15	704	719.1	15.1	14.6			gradational to	704	10	9.0	98
	719.1	733.2	14.1	14.1		325	Interbedded black shales + fine grained sandstone upper 2 feet of unit distinct bands of shale 5" cent of unit black shales fine grained s.s. wh. spg. 724.3 calcite varied dip plane, we. in. brown in shale portion sand filled 1/2" diameter	719	10	9.9	99
									722		
	733.2	741	7.8	7		335	Cross bedded sandstone, medium grained, fine pebbles layer 735-735.5 small shale clasts in upper part, 736.5 shale matrix increases	733	10	9.0	90
	741	759.6	18.6	16.5		346	gradational to black interbedded shale + grey sandstone, fine grained, ss. in wisp to 1" not continuous, boundaries irregular, vague, medium grained sandstone in bands to 1/2" - 1" cross bedded in part with shale matrix these contacts sharp, calcite straight contacts unit has odd thin calcite layer	741			
	759.6	759.7	0.1	0.1		8 sand congl.	759.5 shell material in sandstone carbonaceous partings throughout	759			
15	759.7	764	4.3	2.5		761	Sandstone 746.5-749.2 741 broken cone quartz 751 black sanded material MAR 80-150	759	11	3.5	80
						769	Unit 8 medium grained bedded grey sandstone 8 about pebble conglomerate 3/4" diameter sandstone with surface with calcite veins, irregular sharp boundary to	761	5	0	80%
							Black carbonaceous shale, coal material in lenses, (1/4" - 1/2" thin) in part, thin coal layers (1/4" - 1/2" thin) sand, bedded, fine grained sandstone, carbonated 7'	766			
	764	790.2	26.2	6			shale sandy, above bands gradational to sand, grey to white shale 761 - 764 zone 0", 4", coal lenses 702'	764	5	4.5	91%
							gradational to sandy shale, fine grained sand stone bedding in shale matrix gradational to	771			
	790.2	800.0	9.8	9.5			Sandstone, fine grained, medium grained, grading to fine grained, gradational to hard shale zone, tough, cross beds in part gradational to	774			
15	800.0	804.1	4.1	3.9			Black carbonaceous shale, coalified, fossils - back 1/4" coal lign, slickensided, sandstone vitreous, calcite, gradational to	777	5	5.1	90
							interbedded fine grained sandstone wisps in carbonaceous shale black	783	5	4.3	90%
							Sandstone bands to 1/2" medium grained show slump structures, contacts, calcite, distributed and gradational with shales slickensided 2' 820'	788	5	4.9	98%
	804.1	832.0	27.9	27.0				793	5	4.9	98%
								798	5	4.9	98%
								803	5	3.9	98%
								807	5	3.9	98%
								817	10	9.8	98%
								817	10	9.5	95
								822	10	9.5	95
								826			
								832			

832-833 Channel, hard black earthy

HOLE No: D3112 SHEET No: 8

DENISON MINES LIMITED
Diamond Drill Core Log

DATE BEGUN: SEP 7 29/41 DEPTH: 950 BEARING: _____ UT.M.: 127049
DATE FINISHED: _____ ELEV. COLLAR: _____ TOTAL DEPTH: _____ COAL LICENSE: _____
A.I.: _____ HOLE ANGLE: _____ LOGGED BY: W. GEE CORE SIZE: 10

B.C.A.	UNIT		UNIT THICKNESS		COAL SHEET	DESC. LOG	MARKER	DESCRIPTION	RECOVERY			
	From	To	Thick.	True					Int.	F.	F. Rec.	%
14	832	834.4	2.4	2.3			831.4	833-834.4 Coal Mash Sandy Musstones - upper 1/2 sandy, greenish sandstone to fine grained sand, shaly and shaly brown- black mudstone, black towards bottom of unit gradational to	827 837	10	9.6	94
	834.4	852	17.6	14			852.7	Coal	837 844 847 857	10	9.8	98
	852	856.1	4.1	3.8			856.1	Silty shale grading to Musstone Mark - Brown. 864 Vertical Fracture N 50° W 50° 863-864 Calcite lined Fracture + Tension Cracks gradational to	857 867	10	9.6	98
	856.1	865.2	9.1	7.8			865 864	gradational to				
15	865.2	876	10.8	10.7				Mudstone - brownish black crystalline, greenish sandstone bands, shaly towards top gradational to	867 877	10	9.7	92
	876	891.2	15.2	14.7			892	Silty shale to black homogeneous shale 3" Carbonaceous band 883 Calcite lined fracture thickened 890.6 shaly crystalline fracture surface gradational to	877 887	10	9.6	96
							883		887 897	10	9.2	92
							896					
15	896.2	893.6	2.4	2.3				Coal small shale bands gradational to				
	893.6	916	22.4	21.6				Black to Brown Mark structureless mudstone gradational to	897 907	10	9.6	98
									907 917	10	9.4	99
	916	928.7	12.1	12.3				Interbedded Brown Musstones, Sandstone, Brownish Black shale in part, fluted and greenish shaly conglomerate sand increasing in the unit gradational with	917 927	10	7.9	99
15	928.7	945	16.3	15.7			932	Sandstone, fluted, size of Musstones, INTER BED OF UNIT gradational to coarse grained shaly ss. 932-937 Carbonaceous shaly & bands shale shaly in bottom of unit - except shaly massive to	927 937	10	9.9	99
							937		937 947	10	9.9	99
							946					
	945	949.2	4.2	4.0			949	Musstones with sandy, irregular laminations 945-947 mudstone, greenish to brownish shaly shaly 946.2 Calcite lined fracture N 50° W 50° - HEAVY DISTURBED				

HOLE No: QND7115 SHEET No: 1

DENISON MINES LIMITED
Diamond Drill Core Log

DATE BEGUN: Nov. 15 '71 DEPTH: _____ BEARING: _____ UTM: 1104059
DATE FINISHED: Nov. 5 '71 ELEV. COLLAR: 4200' TOTAL DEPTH: 11458.5 COAL LENSE: _____
LAT: 55° 05' 32" HOLE ANGLE: VERTICAL LOGGED BY: ALI CHOWDURY CORE SIZE: HO-4" DIAMETER

B.C.A.	UNIT		UNIT THICKNESS		COAL SHEET	DESC. LOG	MARKER	DESCRIPTION	RECOVERY					
	From	To	Thick.	True					Int.	Fr.	Fr. Rec.	%		
								SCALE: 1 inch = 10 feet						
	0	60						overburden, mainly clays and boulders of till						
5°	60	66.5	6.5					Mudstone: grey to dark grey, most of the interval fragmented, bottommost 1 foot very silty and sandy. Gradational to sandstones below.	67-77	10	10	100		
										77-82	5	4.5		
										82-87	5	5	100	
										87-97	10	10	100	
										97-107	10	10	100	
										107-117	10	10	100	
5°	66.5	119.5	53					Sandstones: light grey to grey, medium-grained, irregularly laminated, disturbed between 68.5-90. Grey argillaceous laminae in this zone appears to have thin regular interlayered with thin sandy intervals (originally), but because of intense scavenging action it is now seen chaotically oriented at all angles (where preserved) and in some intervals it has been filled around the simularian, intraclastic particles. Sandstone between 77-90 light coloured, clean and fairly well sorted and ranges from medium to coarse-grained. Core fragmented at 76-77 and 85.5-87.5 (vertical split throughout). Between 104.5-119.5 the sandstones show, dark, discontinuous argillaceous lamination more or less (4 to 5 inches) shale intercalation and these are characterized by numerous burrows, commonly 1/2 inch and up to 1 1/2 inch deep. One burrow at 114.5 is a composite one and its successive						

Handwritten signature or initials.

Diamond Drill Core Log

DATE BEGUN:	DEPTH:	BEARING:	U.T.M.:
DATE FINISHED:	ELEV. COLLAR:	TOTAL DEPTH:	COAL LICENSE:
LAT.:	HOLE ANGLE:	LOGGED BY:	CORE SIZE:

B.C.A.	UNIT		UNIT THICKNESS		COAL SHEET	DESC LOG	MARKER	DESCRIPTION	RECOVERY				
	From	To	Thick	True					Int.	Fl.	Fl. Rec.	%	
4°	119.5	121	1.5				stages of development can be discerned. It gets progressively wider with depth (about 5 inches) well burrowed intervals, is characterized, at intervals, by thin laminated units (less than 2 mm in thickness). These obviously are disturbed argillaceous layers that have been funneled through the hole or had just fallen through the burrowed cavity in the walls of annular withdrawal.						
4°	121	127.5	6.5				Some muddy intraclasts, some well rounded in a 2 inch zone at 112.5'. Dominantly muddy with sandy stringers between 115.5-116.5, sequence disturbed progressively, disturbance of primary laminae	117	10	10	100		
4°	127.5	132	4.5				Sandstone/siltstone: alternating sequence, mts. less than 50% fine to medium grained sandstone, well laminated and sporadic ripple lamination. Burrows here and there especially in small muddy intervals. Some burrows 2 1/2" deep & 1/2" wide & these have distinct lamination of original units (though not modified) hence not representing crescent successive sparging marks. Bottommost muddy and sandy (a no. of sand infilled burrows)	127					
	132	138.5	6.5				Lower part of the unit exhibits well defined bandings, spaced at 1/2" intervals and due to early interlamination. Low early siltstone along these carbonaceous laminae	127	10	10	100		
6°	138.5	171	32.5				Sandstone: dull looking (due to admixture of abundant argillaceous matter) fine grained, structureless in the main. Bottommost 2.5' show lamination at 70° with core axis. It is thought to represent slump pipe. Bottom 2' or so	137	10	10	100		
							Variegated sequence of dark grey to black siltstone with thin intercalations of fine sand, intricately laminated and cross laminated, odd burrows throughout. Sand lenses appear to be developing bottomward, lower boundary indented due to burrowing.	147					
							Sandstone: light grey, medium grained, homogeneous except in lower 5' where slump laminae are evident at intervals. Unit gives a flakey appearance due to intermingling of mud of various consistencies	147	7	6.8			

HOLE No: _____ SHEET No: 3

DENISON MINES LIMITED
Diamond Drill Core Log

DATE BEGUN: _____ DEPTH: _____ BEARING: _____ U.T.M.: _____
DATE FINISHED: _____ ELEV. COLLAR: _____ TOTAL DEPTH: _____ COAL LICENSE: _____
A. _____ HOLE ANGLE: _____ LOGGED BY: _____ CORE SIZE: _____

B.C.A.	UNIT		UNIT THICKNESS		COAL SHEET	DESC. LOG	MARKER	DESCRIPTION	RECOVERY			
	From	To	Thick.	True					Int.	Fr.	Rec.	%
								Mudstone: dark grey, richly silty (homogeneously) vaguely banded. Between 140.7 and 138.5 structureless. Bottommost well-developed banding due to silty or very fine sandy interlayers. Core shattered from 153-155 and 159-161. Last 5 feet have lot more intercalations of sands that change color of mudstone to dull grey. This interval has brief stretches incorporating wavy shaly intervals that are now embedded in irregular laminations gradational below.	154-164	10	9.9	
5°	171	191	20					Sandstone/Mudstone: fine grained sand, constitutes 85% of the sequence, closely spaced, slightly undulating but parallel laminations. This interval variegated appearance. Interval 3.5' is a peculiar lithology in which mottling has occurred due to incomplete biochurning. Isolated muddy lenses and layers, discrete burrowing etc. Core excellent at shaly contact. Bottommost 1 ft. has regular (coarse) laminations and hence core easily splitting along such planes.	174-177	3	2.8	
7°	191	200	9					Mudstone: dark grey with abundant admixtures of silt and fine sandstone, broadly laminated; some darker muddy bands presumably due to carbonaceous matter. Bottommost 5' have differentiated silty interval. Between 200-205.3 very carbonaceous & have some coal stringers. Sequence between 203.3-205 has a total of 5 inches of coal at the core interval interval shattered. Very gradational to coal below.	187-197	10	9.5	
	205	207	2					COAL: 0.5' Muddy coal, all fragmented during 0.1' Highly carbonaceous mudstone 0.1' Mudstone fragmented 0.2' Mudstone with coal streaks 0.3' Large interval with bands of vitrinite 1.7' (Recovery)	197-202 202-207	5 5	4.5 4	
5	207	213	6					Mudstone: black, carbonaceous, structureless, gradational to coal below.	207-217	10	9	90
	213	214	1					coal with thin intercalations of carbonaceous shales.				

HOLE No: _____ SHEET No: 4

DENISON MINES LIMITED
Diamond Drill Core Log

DATE BEGUN: _____ DEPTH: _____ BEARING: _____ U.T.M.: _____
DATE FINISHED: _____ ELEV. COLLAR: _____ TOTAL DEPTH: _____ COAL L. GENSE: _____
LAT.: _____ HOLE ANGLE: _____ LOGGED BY: _____ CORE SIZE: _____

B.C.A. L.	UNIT		UNIT THICKNESS		COAL SHEET	DESC. LOG	MARKER	DESCRIPTION	RECOVERY			
	From	To	Thick.	True					Int.	F.	F. Rec.	%
5°	214	250.3	36.3					Mudstones: black to dark grey, several thin early intervals, notable among these is from 242.5-244 in which several durain stringers encountered. Mudstone richly carbonaceous and apparently structureless. Core fragmented along the carbonaceous intervals. Difficult to determine B.C.A. But judging from carbonaceous stringers (orientation) and content of microfossils it is thought to be 5°. 217-227 10 9.5 227-237 10 9.8 237-247 10 9.7				
5°	250.3	253.9	3.6					COAL SEAM: 0-5' Durain with small vitrain 0-4' Alternating bands of durain & vitrain 0-3' Bone coal, fragmented 0-7' Mudstone 0-5' Highly carbonaceous mudstone 0-5' Vitrain/durain, rapidly alternating 0-2' Dominant vitrain 0-2' Vitrain/durain 0-3' Bony coal, friable 3-6' Recovery = 3.3	247-253 6 5 253-257 4 3.8			
12°	253.9	305.5	51.5					Mudstones: see description on page 5.				

HOLE No: _____ SHEET No: 5

DENISON MINES LIMITED
Diamond Drill Core Log

DATE BEGUN: _____ DEPTH: _____ BEARING: _____ U.T.M.: _____
 DATE FINISHED: _____ ELEV. COLLAR: _____ TOTAL DEPTH: _____ COAL LICENSE: _____
 LAT.: _____ HOLE ANGLE: _____ LOGGED BY: _____ CORE SIZE: _____

B.C.A.	UNIT		UNIT THICKNESS		COAL SHEET	DESC. LOG	MARKER	DESCRIPTION	RECOVERY				
	From	To	Thick.	True					Int.	Fr.	Fr. Rec.	%	
									257-	10	9.5		
									267-	10	9.7		
								Mudstones: gray to dark gray, sporadically black (wherever carbonaceous), otherwise uniform lithology, silty & other coarser detritus completely facies and due to this fact it's finely non-laminated and apparently structureless. Bitch. 12 degrees except in the bottom 10 feet where it's about 15 degrees.	277-	4.5	4.3		
									281.5-	4	3.8		
									285.5-	10	9.2		
								<u>COAL SEAM</u>	295.5-	1.5	1.5	100	
								0-4' silty coal, some boring	297-				
								0-6' widely spaced laminae of vitrain in ^{surface}	297-	10	9.5		
								0-4' silty coal, some friable	307-				
								0-2' Carbonaceous mudstone					
								1-4' mainly vitrain					
								3-0' (recovers 2.6)					
10°	308.5	317	18.5					Mudstones: Dark gray to black, several thin sandy intercalations, bottom 1.5' shows some silty stringers, otherwise structureless. Coal zone grades into carbonaceous mudstone, lower laminae very gradual.	307-	10	9.6		
									317-	10	9.4		
									321-				
15°	317	324	7					Siltstone/mudstone: slight dominance of mud, vaguely laminated, small scale cross lamination (ripple type); very gradual below.					

HOLE No: _____ SHEET No: 6

DENISON MINES LIMITED
Diamond Drill Core Log

DATE BEGUN: _____ DEPTH: _____ BEARING: _____ U.T.M.: _____
DATE FINISHED: _____ ELEV. COLLAR: _____ TOTAL DEPTH: _____ COAL LICENSE: _____
LAT.: _____ HOLE ANGLE: _____ LOGGED BY: _____ CORE SIZE: _____

B.C.A.	UNIT		UNIT THICKNESS		COAL SHEET	DESC. LOG	MARKER	DESCRIPTION	RECOVERY		
	From	To	Thick.	True					Int.	Ft.	Int. Rec.
5°	324	329.4	5.4				COAL SEAM: 0-2' Bony coal (heavy) 0-5' Mainly durain 0-2' Well coal 0-6' Durain, sub-spherical tubercles 0-9' Dominantly durain, some tubercles 0-7' Sandstone 0-2' Durain 0-2' Staly carbonaceous durain 4.5' (Recovered)				
5°	329.4	368	38.6				Conglomerate: very fine-grained, conglomeratic and gabbroic. There are vague gradational sequences ranging from fine grits to fine conglomerates. Pebbles dominantly of colored lithology and well-sorted. Core is free from fracture spines except at 344 where a joint is orientated at 45° to the core axis. One short gradational interval appears to represent a hiatus with 15 feet of detritus periodically. About 15 feet are medium-grained conglomerates rather abrupt contact with the sandstones below.	327 337 337 347 347 357 357 367	10 10 10 10 10	9.5 10 10 9.8	100 100
10°	368	396	28				Sandstone: initial sandstone (i.e. up to 378) are light gray, medium-grained, clean and well-sorted, laminated and cross-laminated (appears low angled). Rest though almost maintaining similar grain size are distinctly more gray and slightly less well sorted. Core shattered from 371-376. Abrupt lower contact.	367 377 377 387 387 397	10 10 10 10	9.5 10 9.8	100

HOLE No: _____ SHEET No: 7

DENISON MINES LIMITED
Diamond Drill Core Log

DATE BEGUN: _____ DEPTH: _____ BEARING: _____ U.T.M.: _____
 DATE FINISHED: _____ ELEV. COLLAR: _____ TOTAL DEPTH: _____ COAL LICENSE: _____
 LAT: _____ HOLE ANGLE: _____ LOGGED BY: _____ CORE SIZE: _____

B.C.A.	UNIT		UNIT THICKNESS		COAL SHEET	DESC. LOG	MARKER	DESCRIPTION	RECOVERY			
	From	To	Thick.	Type					Int.	Ft.	Ft. Rec.	%
10°	396	430.3	34.3					Mudstones generally dark grey, black whereas carbonaceous, thin coal intercalation throughout silt and silt content appears to be increasing from bottomward, few fine sandy stringers, sporadic small-scale cross-lamination, but many intervals homogeneous. No organic structures bottom 2-5 very dark and unrecognizable fines into coal below.	397-407	10	9.7	
									407-417	10	9.6	
									417-427	10	8.8	
	430.3	431.8	1.5					Coal: mainly broken up and dominantly shaly, fragments of cleat. Recoveries about 10%	427-435	8	6.5	
	431.8	435.6	3.8									
5°	435.6	446	10.4					Mudstones, grey, silt lamination which gradually increases bottomward, very transitional to fine lithology below	435-445.5	10.5	10.2	

HOLE No: _____ SHEET No: 8

DENISON MINES LIMITED

Diamond Drill Core Log

DATE BEGUN: _____ DEPTH: _____ BEARING: _____ U.T.M.: _____
 DATE FINISHED: _____ ELEV. COLLAR: _____ TOTAL DEPTH: _____ COAL LICENSE: _____
 L.A.: _____ HOLE ANGLE: _____ LOGGED BY: _____ CORE SIZE: _____

B.C.A.	UNIT		UNIT THICKNESS		COAL SHEET	DESC. LOG	MARKER	DESCRIPTION	RECOVERY			
	From	To	Thick.	True					Int.	Fr.	Fr. Rec.	%
50	446	451	E					Mudstone/siltstone: rapid interlaying of the lithologies, but mudstones dominant (constitutes 70% of the sequence. Some slavage of laminae, micro-rippling same in interval of fine sandstone & siltstone very sharp and sometimes erosional contacts with the shaly silt laminae very discontinuous as if subjected to erosional episodes after deposition (there is no sign of biogenic disturbance). Bottom 4 feet are widely banded (darker layers repeated every inch or so).	455.5	10	8.5	
50	451	456	E						455.5			
50	456	499	43					<u>COAL SEAM:</u> 0.3' Bony coal 0.5' Vitrain 0.1' Durain 0.2' Vitrain with durain laminae 1.0' Durain, d.o. friable coal in middle 0.2' Durain (friable coal) 0.2' Dull-looking, with irregular durain laminae 1.8' Dominantly durain 0.1' Bony coal 4.4' (Recovery)	455.5	11	11	100
									466			
									466.5	10.5	10.5	100
									477	10	10	100
									487			
									487	10	10	100
									497			
								Mudstones: black, slightly carbonaceous, absence of fully laminar structure, very sharp contact with conglomerate Conglomerate: predominantly fine-grained; well-sorted; no fracturing; matrix quite gradational sequence; few pebbles larger than 1 inch (across); no of black pebbles, rounded, than the others.				

HOLE No: _____ SHEET No: 9

DENISON MINES LIMITED
Diamond Drill Core Log

DATE BEGUN: _____ DEPTH: _____ BEARING: _____ U.T.M.: _____
DATE FINISHED: _____ ELEV. COLLAR: _____ TOTAL DEPTH: _____ COAL LICENSE: _____
LAT: _____ HOLE ANGLE: _____ LOGGED BY: _____ CORE SIZE: _____

B.C.A.	UNIT		UNIT THICKNESS		COAL SHEET	DESC. LOG	MARKER	DESCRIPTION	RECOVERY				
	From	To	Thick.	True					Int.	Ft.	Ft. Rec.	%	
5°	499	507.2	8.2				COAL SEAM						
							0.5' Bony coal						
							0.2' Dull coal			497-	10	8.8	
							0.8' Bright, solid coal, mainly durain			507-			
							0.2' Carbonaceous mudstone						
	507.2	512	4.8				2.8' Durain with vitrain stringers.						
							1.7' Durain/Vitvain			507-	10	9.3	
	512	514.5	2.5				1.2' Durain 40% vitrain 60%			517-			
							7.2' (Recovered)						
							Mudstone: dark grey to black, sporadically carbonaceous, fractured, gradational below						
5°	514.5	528	13.5				COAL SEAM:			517-	10	9.5	
							1.2' Mainly durain			527-			
							1.0' Vitrain - fragmented bright coal						
							2.2' (Recovered)						
							Mudstone: grey (thin intervals of silt), laminated gradational to coal below.						
5°	528	536.5	8.5				COAL SEAM			527-	9.8	8.2	
							3.0' Durain 70%, vitrain 30%			536.5-	11.5	10.8	
							0.8' friable durain			547-			
							2.0' mainly durain, durain 20%			547-	10	10	100
							1.5' vitrain/durain (overall slight dull but bright)			557-			
							0.3' friable coal, some shales			557-	10	10	100
							7.6' (Recovered)			557-	10	10	100
							see description on page 8			567-	10	10	100
										577-			

HOLE No: _____ SHEET No: 10

DENISON MINES LIMITED

Diamond Drill Core Log

DATE BEGUN: _____ DEPTH: _____ BEARING: _____ U.T.M.: _____
DATE FINISHED: _____ ELEV. COLLAR: _____ TOTAL DEPTH: _____ COAL LICENSE: _____
LAT: _____ HOLE ANGLE: _____ LOGGED BY: _____ CORE SIZE: _____

B.G.A.	UNIT		UNIT THICKNESS		COAL SHEET	DESC. LOG	MARKER	DESCRIPTION	RECOVERY			
	From	To	Thick.	True					Int.	Ft.	Ft. Rec.	%
									577	10	10	100
									587			
								Sandstone: light grey, very clean looking, initial 4.5' are medium to coarse grained, cross stratification discernible in certain zones, otherwise homogeneous. Every 2 feet or so there is a thin film of argillaceous matter and along these planes the core fragments readily. The whole upper sequence gradually fine downwards until around 600 it's quite fine. Some intervals reveal parallel laminations, only at couple of places there are 2-3 inches of shaly intercalations. On the whole the sandstone are clean and well sorted and represent a period of variable current activity. The whole sequence may well represent beach environment (at point bar milieu). Few isolated burrows seen.	587	10	9.8	
									597	10	10	100
									607			
									607	10	9.9	
									617			
									617	10	10	100
									627			
								From 592 - 592.8 is a fragmented zone and its contact below shows a clean fracture and there is no discernible weather above or below it.				

HOLE No: _____ SHEET No: 11

DENISON MINES LIMITED
Diamond Drill Core Log

DATE BEGUN: _____	DEPTH: _____	BEARING: _____	UTM: _____
DATE FINISHED: _____	ELEV. COLLAR: _____	TOTAL DEPTH: _____	COAL LICENSE: _____
LAT: _____	HOLE ANGLE: _____	LOGGED BY: _____	CORE SIZE: _____

B.C.A.	UNIT		UNIT THICKNESS		COAL SHEET	DESC. LOG	MARKER	DESCRIPTION	RECOVERY			
	From	To	Thick.	True					Int.	Fr.	Fr. Rec.	%
110°	625	657	32					Sandstone/subordinate amount of mudstone this is a transitional sequence in which 50% of lithology is composed of fine to medium grained sandstone, well-laminated (usually closely spaced) and transitional framed by dark laminae. The mudstone interbedded with sands are sub gray and have sharp contacts with the sandstone. Burrows are sparsely developed in sandstone and resemble very much the ones found in the main Roosbar lithology. Some ripple lamination is evident in shales. The whole sequence is reminiscent of a temporary marine incursion (a progradation of Roosbar)	627- 637	10	10	100
110°	657	698.5						The sequence is dominantly mudstone/shales with sandstone composing 10% of the sequence. Sporadic burrows. Bottom 3 feet have typical Roosbar-type burrows - few billy stingers that are usually mottled.	647- 657	10	9.7	

HOLE No: _____ SHEET No: 12

DENISON MINES LIMITED
Diamond Drill Core Log

DATE BEGUN: _____ DEPTH: _____ BEARING: _____ U.T.M.: _____
DATE FINISHED: _____ ELEV. COLLAR: _____ TOTAL DEPTH: _____ COAL LICENSE: _____
LAT.: _____ HOLE ANGLE: _____ LOGGED BY: _____ CORE SIZE: _____

B.C.A.	UNIT		UNIT THICKNESS		COAL SHEET	DESC. LOG	MARKER	DESCRIPTION	RECOVERY				
	From	To	Thick.	True					Int.	Fr.	Fr. Rec.	%	
									657-	10	10	100	
									667-				
									667-	10	9.8		
									677-				
									687-	10	9.7		
15°	698.5	730	26.5			703.2 703.5	Pulverized zone, per. coals and carbonaceous matter		687-	7	7	100	
							2 1/2 feet of the sequence lime abundant argillaceous matter, rest very clean and homogeneous fine-grained sandstone		694-				
							composity 80% of the sequence. Abundantly laminated and cross laminated. Shale intercalation have slightly erosional contact with the sandstone		694-				
									704.5	110.5	10.3		
									711	6.5	6.3		
									711-				
									716-	5	4.5		
									716-				
									722.5	6.5	6.4		
									722.5				
10°	730	742.2	12.2				See description on page 13		732.5	10	10	100	

HOLE No: _____ SHEET No: 13

DENISON MINES LIMITED

Diamond Drill Core Log

 DATE BEGUN: _____ DEPTH: _____ BEARING: _____ U.T.M.: _____
 DATE FINISHED: _____ ELEV. COLLAR: _____ TOTAL DEPTH: _____ COAL LICENSE: _____
 ALT.: _____ HOLE ANGLE: _____ LOGGED BY: _____ CORE SIZE: _____

B.C.A.	UNIT		UNIT THICKNESS		COAL SHEET	DESC. LOG	MARKER	DESCRIPTION	RECOVERY			
	From	To	Thick.	Type					Int.	Fr.	Ft. Rec.	%
								shale, blue black, with fine silty stringers, infested with mica and megal. burrows and some disseminated pyrite. Spals resemble Doreau, Ferguson, but there are an intrinsic part of the untitled sandstone sequence. The bottom contact is clean.	732.5 742.5	10	10	100
10'	747.7	815	72.8					Sandstones, light grey, fine-grained and well sorted throughout, only few small stringers, but at any given place do not exceed few inches. Diachitic sequence displays parallel laminations, some cross-stratification. Around 787 is an inch thick coal zone. Clean well sorted sandstone, suggest the continuation of untitled conditions and few coal stringers suggest the nearness of land area.	742.5 752.5	10	10	100
									752.5 762.5	10	10	100
									762.5 773	10.5	10.2	
									773 783	10	10	100
									783 792.5	9.8	10	
									792.5 804	10.5	10.5	100
									804 817	13	12.3	

HOLE No: _____ SHEET No: 14

DENISON MINES LIMITED
Diamond Drill Core Log

DATE BEGUN: _____ DEPTH: _____ BEARING: _____ U.T.M.: _____
DATE FINISHED: _____ ELEV. COLLAR: _____ TOTAL DEPTH: _____ COAL LICENSE: _____
LAT: _____ HOLE ANGLE: _____ LOGGED BY: _____ CORE SIZE: _____

B.C.A.	UNIT		UNIT THICKNESS		COAL SHEET	DESC LOG	MARKER	DESCRIPTION	RECOVERY					
	From	To	Thick.	True					Int.	Ft.	Ft. Rec.	%		
50	815	1211	396											
								<p>→ <u>Moosebar Formation.</u> The contact of Moosebar shales with tidal sandstone (above) is very abrupt.</p> <p>(Notice though, the appreciable interval above that encompasses the transitional sequence including some typical looking Moosebarish interval). The upper 200' of Moosebar sequence is typical of formation and exhibits abundant burrows (large & small). Noticeable features are almost complete absence of sandy/giltz lamae through out. Mudstns are compact for much of the sequence. The lower half of the formation is dense grey mudstns, cavity filling sponges (smooth bottom & undated type) but mostly sponges in the form of small white patches (siliceous filling & nodules). Bauxite at 825-1026 & 1056-1060. Flat-billed conglomerate, micritic, massive or conglam. the top of section and base of Moosebar. Upper contact of the conglam. is marked by a 1' layer of concrete (see across 1' down hole) and is</p>	817-827	10	100			
								827-837	10	100				
								837-847	10	100				
								847-851	4	100				
								851-857	6	100				
								857-867	10	100				
								867-877	10	100				
								877-887	10	100				
50	1211	1212.5	1.5					887-897	1217	About 99				

peacock grey matrix (lots of its muddy).

HOLE No: _____ SHEET No: 15

DENISON MINES LIMITED

Diamond Drill Core Log

 DATE BEGUN: _____ DEPTH: _____ BEARING: _____ U.T.M.: _____
 DATE FINISHED: _____ ELEV. COLLAR: _____ TOTAL DEPTH: _____ COAL LICENSE: _____
 LAT: _____ HOLE ANGLE: _____ LOGGED BY: _____ CORE SIZE: _____

B.G.A.	UNIT		UNIT THICKNESS		COAL SHEET	DESC. LOG	MARKER	DESCRIPTION	RECOVERY			
	From	To	Thick.	True					Int.	Fr.	Fr. Rec.	%
	1212.5	1217	4.5					Mudstone: dark grey, silty, no pronounced lamination predominant to local below.	1217	10	110	100
	1217	1219	2.0					Coal: initial half durain, rest v. durain.	1227			
	1219	1221.5	2.5					Mudstone: dense, to block, structureless Bang coal.	1227	9	9	100
	1221.5	1223.5	2.0						1236			
									1236			
								Mudstone: initial 20 feet are very silty and differentiated silty stringers with slight ripple type of lamination. Rest homogeneous silty and dominantly structureless.	1246.5	10.5	10.5	100
	1223.5	1246.6	43.1						1246.5			
									1250			
								contain intervals, now subdued in sh. led structures, their origin appears to be related to tectonism but there is not a single barren which could be clearly identified as such. It is quite likely that tectonism was followed by shaming up of the sedi- ments thus obliterating any evidence of tectonic activity. Bottom contact abrupt.	1250	7	7	100
									1257	10	10	100
									1267	10	9.9	
									1277	10	9.7	
									1287	10	9.8	
									1297			
70	1266.6	1295.5	28.9									

CAVE AT
1250

HOLE No: _____ SHEET No: 16

DENISON MINES LIMITED
Diamond Drill Core Log

DATE BEGUN: _____ DEPTH: _____ BEARING: _____ U.T.M.: _____
DATE FINISHED: _____ ELEV. COLLAR: _____ TOTAL DEPTH: _____ COAL LICENSE: _____
LAT: _____ HOLE ANGLE: _____ LOGGED BY: _____ CORE SIZE: _____

B.C.A.	UNIT		UNIT THICKNESS		COAL SHEET	DESC. LOG	MARKER	DESCRIPTION	RECOVERY				
	From	To	Thick.	True					Int.	Fr.	Ft. Rec.	%	
								Sandstones: Initial 15 feet are medium grained, clean and well-sorted sandstone. Cross bedding prominent. The interval after 15 feet grades below into coarse grained sandstone. Some 10 feet have gritty clasts. In the bottom 15 feet there are in addition to sands occasional large pebbles and numerous stringers of coal through below.					
									1297-1307	10		100	
									1307-1317	10		100	
50	1295.5	1322	26.5					Mudstones: brownish grey, sporadic obscure lamination, local shales here and there. coal: 1316-1316.4. Mudstones become much darker bottomward into the increase in organic and carbonaceous matter. Layer becoming with silts. transition.					
5	1322	1328	6					Siltstones: brownish grey, rich argillaceous, small scale cross-lamination, (displays throughout) bottom 1-3 mudstones and imperceptibly grade to heavy coal below.	1317-1327	10	10	100	
	1328	1335	7						1327-1337	10	8.9		

HOLE No: _____ SHEET No: 17

DENISON MINES LIMITED
Diamond Drill Core Log

DATE BEGUN: _____ DEPTH: _____ BEARING: _____ U.T.M.: _____
DATE FINISHED: _____ ELEV. COLLAR: _____ TOTAL DEPTH: _____ COAL LICENSE: _____
L.A.: _____ HOLE ANGLE: _____ LOGGED BY: _____ CORE SIZE: _____

B.C.A.	UNIT		UNIT THICKNESS		COAL SHEET	DESC. LOG	MARKER	DESCRIPTION	RECOVERY					
	From	To	Thick.	True					Int.	Fr.	Fr. Rec.	%		
								Coal seam: Recovery 6:2 % Rec: 36.6						
							1328-1329.5	0-1.5 Hard boggy coal						
1335	1341.5		6.5				1329.5-1331.8	2-3' Durain, with 2-3 inch intervals of vitrain (soft friable coal)	1337-	10		9.0		
							1331.8-1332.8	1-0' Carbonaceous mudstone (0.3 boggy coal)	1347					
							1332.8-1335.5	2-2' Durain (last 0.3' friable durain)	1347					
1341.5	1348.5		7.0				cut-off and 7.0 (extrapolated)		1357	10		10	100	
								→ mudstone/siltstone: initial 2 feet are black carbonaceous mudstone, pretty hard. Rest highly argillaceous siltstone, cross laminated, appears to be fairly competent lithology	1357-	10		10	100	
1348.5	1393.0		44.5						1367-	10		10	100	
								Coal seam: Recovery 6:4 % Rec: 91.4	1377-	10		10	100	
							cut-off (friable) 1341.5-1342.3	0-0.8 Bands of Durain & vitrain	1387					
							1342.3-1343.3	1-0' Dominantly dull, initial 0.2	1387	10		10	100	
							1343.3-1344.5	1-1.2 Durain (00%) - bright laminae	1397					
							1344.5-1346.3	1-1.8 Durain/vitrain						
							1346.3-1347.4	1-1.1 Friable durain (some soft coal)						
							1347.4-1347.8	0-0.4 Carbonaceous mudstone						
							1347.8-1348.5	0-0.7 Vitrain 80%, durain						
								7.0 (extrapolated)						
								→ description on page 18						

HOLE No: _____ SHEET No: 18

DENISON MINES LIMITED
 Diamond Drill Core Log

DATE BEGUN: _____ DEPTH: _____ BEARING: _____ U.T.M.: _____
 DATE FINISHED: _____ ELEV. COLLAR: _____ TOTAL DEPTH: _____ COAL LICENSE: _____
 AT: _____ HOLE ANGLE: _____ LOGGED BY: _____ CORE SIZE: _____

B.C.A.	UNIT		UNIT THICKNESS		COAL SHEET	DESC. LOG	MARKER	DESCRIPTION	RECOVERY			
	From	To	Thick.	True					Int.	Fr.	Fr. Rec.	%
10	393	1411	18					Sandstones - light brownish gray, medium to coarse-grained, prominently cross-stratified, well washed, slightly sandy matrix at places and coaly encrustations (along bedding). Gradual fining downward. Gradational bedded.	1397	10	10	100
									1407			
10	1411	1432	21				Sandstones with thin shaly intervals, sharp block laminae with sandstone. Sandstone clean & fine-grained & constitute 80% of the total volume.	1407	10	10	100	
								1417				
10	1411	1432	21				Shale/Sandstone sequence, 60% shaly sequence. The sandstones are lithologically similar to the above interval.	1417	10	10	100	
								1427				
10	1432	1437	5				Sandstone - fine-grained, well laminated, slightly argillaceous. Gradational below.	1427	10	10	100	
								1437				
15	1437	1485	21.5				Mudstone with fine sandstone & shales (80%) sporadic burrows, shaly clasts and occasional intraformational concretions.	1437	10	10	100	
								1447				
								1447	10	10	100	
								1457	10	10	100	
								1457	15	15	100	
								1458				

HOLE No: QW D-71-77 SHEET No: 1

DENISON MINES LIMITED
Diamond Drill Core Log

DATE BEGUN: Dec 12/58	DEPTH: 177	BEARING:	UTIM: Conner
DATE FINISHED: Jan 17/59	ELEV. COLLAR: 4350	TOTAL DEPTH: 130.8	COAL LICENSE:
A:	HOLE ANGLE: 79°	LOGGED BY: J.P.D.	CORE SIZE: 1 1/2

B.C.A.	UNIT		UNIT THICKNESS		COAL SHEET	DESC. LOG	MARKER	DESCRIPTION	RECOVERY				
	From	To	Thick.	True					Int.	Fr.	Fr. Rec.	%	
—	0	131						① OVERBURDEN CORED FROM 80' - FINE GR. C.G. S.S. IN 11 MUDDY CLAY MATRIX - U.S. CONG. AT 125 (BOULDER) - 75% of CORE IS CLAY					
75°	131	133	2			130	MED. GRAY CARB. SHALE						
	133	137.8					COALS SAMPLE INT: 133 → 136.5 50% CLAY 50% VIT. 135.5 → 136.2 DIRTY COAL 136.2 → 137.8 50% INT 50% GR.	133	4.8	4.5	99		
75°	137.8	147	9.8			140	HOMOGENEOUS C.G. S.S. - NO BEDDING (MASSIVE) - WELL SORTED & RND'D - SLIGHT GRIND → CONG.						
75°	147	162.5	14.8			150	VERY PURELY SORTED CONG. CHERTS UP TO 1" - VEMENT - CLAY → F.G. SS UP TO 50% - SOLUBLE SURFACED (CHERT) CHERT GREEN → BLACK CHERT NO BEDDING						
	162.5	193				160	3 CONG. ZONES NON CONVENTIONAL CARB PARTINGS						

HOLE No: Qw D-71-17 SHEET No: 2

DENISON MINES LIMITED
Diamond Drill Core Log

DATE BEGUN: Dec 12/71 DEPTH: 236 BEARING: _____ U.T.M.: 09A1066
DATE FINISHED: JAN 11/72 ELEV. COLLAR: 4850 TOTAL DEPTH: 1223 COAL LICENSE: _____
LAT: _____ HOLE ANGLE: 1190° LOGGED BY: A. P. A. CORE SIZE: 1 1/4

B.C.A.	UNIT		UNIT THICKNESS		COAL SHEET	DESC. LOG	MARKER	DESCRIPTION	RECOVERY				
	From	To	Thick.	True					ft.	ft.	ft. Rec.	%	
10° ↓ 15°	162.5	193						→ Cong BAND 5'					
	193	225	31.5					1100g. Med GREY → LY GREY S.S. - VERY FINE GRAINED - LAMELLAR BEDDING NOT WELL PRONOUNCED - MINOR CARB SHALE FRAGS FOUND IN SOME BEDDING PARTS & CHERT FRAGS. 5" COAL SILTY SHALE DK GREY TO BLACK B.C.H. VARIES FROM 0-30° CROSS BEDDING, WARP CASES F. DIST. BEDDING PREVALENT PLANT REMAINS VERY COMMON ON BEDDING PARTS					
10°													
8°	225	228.5	3.5					8" COAL					
									225	3.5	3.2	91%	

HOLE No: QD71-17 SHEET No: 4

DENISON MINES LIMITED
Diamond Drill Core Log

DATE BEGUN: DEC 12/71 DEPTH: 350 BEARING: _____ UT.M.: 094066
DATE FINISHED: MAY 11/72 ELEV. COLLAR: 4350 TOTAL DEPTH: 1303 COAL LICENSE: _____
LAT.: _____ HOLE ANGLE: 7.90° LOGGED BY: G.P.G. CORE SIZE: NO 1 1/2

B.C.A.	UNIT		UNIT THICKNESS		COAL SHEET	DESC. LOG	MARKER	DESCRIPTION	RECOVERY			
	From	To	Thick.	True					Int.	Fr.	Fr. Rec.	%
7°	296	326	210.5				300	POORLY SORTED SANDSTONE UNIT SLIGHTLY GRADATIONAL FROM ARGILLITE FINE GRAINED CONG. TO VERY FINE GRAINE DK. GREEN GRAB. S.S. BEDDING WELL PRONOUNCED IN F.G UNITS - MUSCOVITE FREQUENT HAVING PLAINES OF BREAKAGE (//) TO BEDDING - PLANAR BEDDING				
6°	326	339					320	CONSISTENT COARSE GRAINED CONG SORTING FAIR - VERY WELL COMPACTED - SAND PARTLY LINED BY CONCRETIONS				
5°	339	348	13				340	COARSE GRAINED CONG ARGILLITE S.S. SINGULAR PARTICLES 10% WHITE CLAY				
			9				350					

HOLE No: QD-71-17 SHEET No: 5
 DENISON MINES LIMITED
 Diamond Drill Core Log

 DATE BEGUN: DEC. 12/51 DEPTH: 410 BEARING: _____ U.T.M.: 894065
 DATE FINISHED: FEB 12/52 ELEV. COLLAR: 1340 TOTAL DEPTH: 1305 COAL LICENSE: _____
 LAT.: _____ HOLE ANGLE: 79° LOGGED BY: G.P.G. CORE SIZE: 1 7/8" / 3/4"

B.C.A.	UNIT		UNIT THICKNESS		COAL SHEET	DESC. LOG	MARKER	DESCRIPTION	RECOVERY				
	From	To	Thick.	True					Int.	Fr.	Fr. Rec.	%	
2°	348	366						MASSIVE MED GREY COARSE GRAINED S.S. ← GLAUCONITE PRESENT					
							369	LONG ZONE @ 369 NO GRIDDING OR BEDDING					
41°			18					2.5' CLEAN BRIGHT COAL SLIGHT SHEARING 15% C					
							370	.8' COAL (CORE MISSING)					
							380	1.0' CLEAN BRIGHT COAL 2.0' DIRTY COAL					
51°							390	MASSIVE CARBONACEOUS MUDSTONE DICKEY-BUR MANY PLANT IMPRINTS & THIN SEPTARIAE ALONG BEDDING PLANES VERY FISSILE BREAKING ON UNEVEN SURFACES & HAVING MASSIVE BEDDING FEATURES					
							400						
	105.5	413.5					410	8.0' COAL SEAM 10% VIT. 20% LUMP 10% FUSIL HIGHLY BROKEN NO SHEARING OR DIRT BANDS					205.3

HOLE No: QD-71-17 SHEET No: 6

DENISON MINES LIMITED
Diamond Drill Core Log

DATE BEGUN: DEC. 12/71 DEPTH: 470 BEARING: _____ UTM: 094066
DATE FINISHED: FEB. 17/72 ELEV. COLLAR: 4350 TOTAL DEPTH: 1303 COAL LICENSE: _____
C.A.: _____ HOLE ANGLE: 790° LOGGED BY: G.P.G. CORE SIZE: NO 1 3/4"

B.C.A.	UNIT		UNIT THICKNESS		COAL SHEET	DESC. LOG	MARKER	DESCRIPTION	RECOVERY			
	From	To	Thick.	True					Int.	Ft.	Ft. Rec.	%
	413.5	516	8.0					SOME GREY SHALE ZONES (SAMPLED IN 311 W HOLE)	413.5	8.0	7.5	94%
							420	MASSIVE LT GREY FINE GRAINED SANDSTONE. WELL SORTED.				
							430	CEMENT IS LT GRAY TO CREAMY WHITE CLAY				
							440	= VERY WELL CEMENTED UNIT				
							450	CORES VERY WELL				
							460	= BEDDING IS FOUND TO BREAK ALONG PLANE (BLACK) SURFACES				
							470	CROSS BEDDED ZONE				
							160	CONSISTENT BEDDING FROM 1/4" - 1/2" FROM HERE				
								CROSS BEDDED				


4
80

Dist.

HOLE No: QD-71-17 SHEET No: 8

DENISON MINES LIMITED
Diamond Drill Core Log

DATE BEGUN: Dec 12/71 DEPTH: 590 BEARING: _____ U.T.M.: 094066
DATE FINISHED: FEB 15/72 ELEV. COLLAR: _____ TOTAL DEPTH: 1523 COAL LICENSE: _____
LAT: _____ HOLE ANGLE: 790⁵ LOGGED BY: GAG CORE SIZE: 1 1/8"

B.C.A.	UNIT		UNIT THICKNESS		COAL SHEET	DESC. LOG	MARKER	DESCRIPTION	RECOVERY				
	From	To	Thick.	True					ft.	ft.	ft.	Rec.	%
								FREQUENT SUGGESTIVE OF A TURBID ENVIRONMENT					
	536	542	2.6				540	TURBIDIC CASTS & RIFPLES ARE COMMON - MUD CHIPS ARE FOUND FREQUENTLY & DISTORTED BY THE ENERGETIC ENVIRONMENT					
							550	CONTINUATION OF THE ABOVE IN A MORE FINE GRAINED MATRIX - INCREASE IN TURBIDITY WITH POSSIBLE BISTRATIGY					
4° ↓ 6"							560	- CHARACTERISTIC BANCK MUD CHIPS ELONGATED ALONG BEDDING BY COMPRESSION					
							570						
	542	576	3.4				580	A VERY POORLY BEDDED TO MASSIVE DR GREY TO BANCK S.S. INTER BEDDED WITH MINOR SHALE.					
							590	VIOLINELY DISTURBED WITH ERRATIC CHANGES IN LITHOLOGY					

HOLE No: QWD 71-17 SHEET No: 9

DENISON MINES LIMITED
Diamond Drill Core Log

DATE BEGUN: <u>Dec 12/71</u>	DEPTH: <u>650</u>	BEARING: _____	UTIM: <u>091066</u>
DATE FINISHED: <u>JAN 17/72</u>	ELEV. COLLAR: <u>19550</u>	TOTAL DEPTH: <u>1305</u>	COAL LICENSE: _____
LAT: _____	SOLE ANGLE: <u>+90</u>	LOGGED BY: <u>GJG</u>	CORE SIZE: <u>1 1/2 1 3/4"</u>

B.C.A.	UNIT		UNIT THICKNESS		COAL SHEET	DESC. LOG	MARKER	DESCRIPTION	RECOVERY				
	From	To	Thick.	True					Int.	Ft.	Ft. Rec.	%	
								AND ASSOCIATED DEPOSITION PATTERNS					
							600	CALCITE & CARBONACEOUS BONES SEEM TO BE ASSOCIATED WITH MOST ERATIC DEPOSITION KNOWN TO BE IN (see following)					
10°							610	CALCITE VEINLETS & COAL CALCITE VEINLETS					
15°	576	612	36					RUBBLE SMALL FRACTURE					
							625						
							630						
5°	612	633	21					MASSIVE TO FINELY BEDDED LT. GRAY FINE GRAINED S.S					
10°							640	INT. WITH BLACK SLIGHTLY CARBONACEOUS MUDSTONES UP TO 4" WHICH OFTEN HAVE CALCITE VEINLETS PRESENT					
							650						

HOLE No: QW D71-17 SHEET No: 10

DENISON MINES LIMITED

Diamond Drill Core Log

DATE BEGUN: DEC 12/71 DEPTH: 710 BEARING: _____ U.T.M.: 09A066
 DATE FINISHED: FEB 17/72 ELEV. COLLAR: 433 TOTAL DEPTH: 1303 COAL LICENSE: _____
 AT: _____ HOLE ANGLE: 90° LOGGED BY: GPG CORE SIZE: NQ 1 3/8"

B.C.A.	UNIT		UNIT THICKNESS		COAL SHEET	DESC. LOG	MARKER	DESCRIPTION	RECOVERY					
	From	To	Thick.	True					Int.	Ft.	Ft. Rec.	%		
							610							
							620							
							680							
							690							
							700							
							710							

LAST 35' OF THIS UNIT UP TO THE
 FLOONBORG FIN. ARE VERY MASSIVE
 HOMOGENEOUS

HOLE No: QND 71-17 SHEET No: 11

DENISON MINES LIMITED
Diamond Drill Core Log

DATE BEGUN: Dec 2 1941 DEPTH: 1146 BEARING: _____ U.T.M.: 094062
DATE FINISHED: 11/21/17/21 ELEV. COLLAR: 1350 TOTAL DEPTH: 1303 COAL LICENSE: _____
LAT.: _____ HOLE ANGLE: 792° LOGGED BY: GPG CORE SIZE: 1 1/2 / 3/4

B.C.A.	UNIT		UNIT THICKNESS		COAL SHEET	DESC. LOG	MARKER	DESCRIPTION	RECOVERY					
	From	To	Thick.	True					Int.	Fr.	Fr. Rec.	%		
	633	717	84											
	717	1117						MOOSE BAR FIN. STARTS IN BOX #33 ENDS " " #53 SEE LITH. LOG FROM QND 71-15 BY A. CHANDLER FOR DESC. OF MOOSE BAR						
							956 1/4	6" OF GREEN CLAY 1/2 SAND @ 956						
							1083*	2" OF WHITE CLAY @ 1083						
							1085*	2" OF WHITE CLAY @ 1085						
							1120	COARSE GRAINED SAND PEPPER S.S. GRAINS MOSTLY DARK RX FRAGS WITH Qtz CEMENT. POORLY SORTED 1/2 HARD LONG PEBBLE IN SAND MATRY TO 1126						
							1130							
							1140							

400

HOLE No: Q5 D71 17 SHEET No: 12
 DENISON MINES LIMITED
 Diamond Drill Core Log

 DATE BEGUN: DEC 12/71 DEPTH: 1200 BEARING: _____ U.T.M.: 091066
 DATE FINISHED: FEB 11/72 ELEV. COLLAR: 9350 TOTAL DEPTH: 1300 COAL LICENSE: _____
 ALT.: _____ HOLE ANGLE: +90° LOGGED BY: G.P.G. CORE SIZE: 1 1/2" / 3/4"

B.C.A.	UNIT		UNIT THICKNESS		COAL SHEET	DESC. LOG	MARKER	DESCRIPTION	RECOVERY					
	From	To	Thick.	True					Int.	Ft.	Ft. Rec.	%		
	1117	1145.5	28.5											
775	1145.5	1151	5.5				1150	VERY FINELY SORTED LONG CURVED WELL FOUNDED FROM 1/4" - 2.5" SOLUTION SURFACES WELL CEMENTED WITH SILICA 7" CLEAN COAL						
120°							1160	VERY HOMOGENEOUS BLACK MASSIVE MUDSTONE. NO SAND OR BEDDING. CARBONACEOUS (PLANT FRINGS) THIRTS RICH ZONES BREAKS ALONG AND NEAR 4" DIRTY COAL BAND ST.						
3°							1170							
							1180							
							1190							
	1151	1199	48				1200							

HOLE No: Q11 D71-17 SHEET No: 14

DENISON MINES LIMITED
Diamond Drill Core Log

DATE BEGUN: <u>Dec 2-71</u>	DEPTH: <u>1303</u>	END	BEARING:	U.T.M.: <u>09A065</u>
DATE FINISHED: <u>JAN 17 1972</u>	ELEV. COLLAR: <u>4350</u>		TOTAL DEPTH: <u>1323</u>	COAL LICENSE: <u> </u>
LAT.:	HOLE ANGLE: <u>90°</u>		LOGGED BY: <u>GPG</u>	CORE SIZE: <u>1 1/2"</u>

B.C.A.	UNIT		UNIT THICKNESS		COAL SHEET	DESC. LOG	MARKER	DESCRIPTION	RECOVERY					
	From	To	Thick.	True					Int.	Fr.	Fr. Rec.	%		
	1266.2	1271.7												
			5.5				1270	5.5 CLEAN VITREOUS SAMPLED AS A WHOLE			5.5	5.5	100	
	1271.7	1303					1280							
							1290							
							1300							
			31.3					END 1303						
							1310							
							1320							

HOLE No. QD72-12 SHEET No. 2

DENISON MINES LIMITED
 Diamond Drill Core Log

DATE BEGUN: <u>JAN 16/72</u>	DEPTH: <u>180</u>	BEARING: _____	UTM: <u>11A056</u>
DATE FINISHED: <u>JAN 21/72</u>	ELEV. COLLAR: <u>3500</u>	TOTAL DEPTH: <u>637</u>	COAL LICENSE: _____
LAT: _____	HOLE ANGLE: <u>-90°</u>	LOGGED BY: <u>GPG</u>	CORE SIZE: <u>NO 1 1/2</u>

B.C.A.	UNIT		UNIT THICKNESS		COAL SHEET	DESC. LOG	MARKER	DESCRIPTION	RECOVERY				
	From	To	Thick.	True					Int.	Fr.	Fr. Rec.	%	
5-8°								- VERY MASSIVE BEDDING IN MED GRAINED 1-1/2 FT GRAY SANDSTONE VERY WELL COMPACTED					
							130	- CARBONACEOUS ROCK FRAG. FORM INTEGRAL PART OF MATRIX ~70% - CARB. ZONES ARE OFTEN FOUND WITH A B.C.A. UP TO 40% BUT ARE LACK OF VERY TURBID INTERVALS					
							140						
5° 10°							150						
							160						
	185.5	196.6	60.5				170	BLACK SANDY SLTSTONE					
							180						

HOLE No: RWD 72-19 SHEET No: 3

DENISON MINES LIMITED

Diamond Drill Core Log

 DATE BEGUN: JAN 16/72 DEPTH: 240 BEARING: _____ U.T.M.: 114056
 DATE FINISHED: JAN 24/72 ELEV. COLLAR: 3500 TOTAL DEPTH: 137 COAL LICENSE: _____
 LAT.: _____ HOLE ANGLE: 90° LOGGED BY: GKG CORE SIZE: 10 1/4"

B.C.A.	UNIT		UNIT THICKNESS		COAL SHEET	DESC. LOG	MARKER	DESCRIPTION	RECOVERY					
	From	To	Thick.	True					Int.	Fr.	Ft. Rec.	%		
	166	192	26				190	VERY DISTURBED BEDDING						
							200	FINE GRAINED LI. GREY S.S. - FINELY BEDDED (3/4") INT WITH DARK GRAY SHALES						
							210	SHEAR ZONE OVER 1" IN CORE MUDSTONE						
	192	219	27				220	1' POORLY SORTED CONG.						
	210	210	10					2.8' VERY DIRTY COAL						
								1' DIRTY COAL						
							230	6" CARB M.S.D. 1' CARB M.S.D.						
							240							

HOLE No: Qw D72-19 SHEET No: 4

DENISON MINES LIMITED
Diamond Drill Core Log

DATE BEGUN: <u>JAN 16 1972</u>	DEPTH: <u>300</u>	BEARING: <u></u>	UTM: <u>114056</u>
DATE FINISHED: <u>JAN 21 1972</u>	ELEV. COLLAR: <u>250</u>	TOTAL DEPTH: <u>237</u>	COAL LICENSE: <u></u>
LAT: <u></u>	HOLE ANGLE: <u>0°</u>	LOGGED BY: <u>GPG</u>	CORE SIZE: <u>Med 1 3/8"</u>

B.C.A.	UNIT		UNIT THICKNESS		COAL SHEET	DESC. LOG	MARKER	DESCRIPTION	RECOVERY			
	From	To	Thick.	True					Int.	Fr.	Fr. Rec.	%
								CARBONACEOUS BLACK MUDSTONE				
							250	- HAS POORLY DEVELOPED BEDDINGS				
							270					
10 N 15°	270	265	45				270	MED-FINE GRAY SANDY SILTSTONE				
							270	BEDDING VARIED FROM MASSIVE → 1/4"				
							270	X BEDS & TYPICAL CASTING WERE PREVALENT				
							270	CARBONACEOUS ZONES WERE DARKER IN COLOR				
							270	& SHARPED TO A MINOR DEGREE				
							283					
10 N 12	265	283	18				283	INCREASING AMOUNT OF SANDSTONE WITH INCREASE				
							283	IN SAND SIZE CARBONACEOUS FRAGS.				
							290					
11A-33	283	290	7				290	DISTINCTIVE SALT & PEPPER APPEARANCE				
							290	MED GRAIN				
							300	MINUTE COAL INTERBEDS				

HOLE No: QAD-72-19 SHEET No: 5
 DENISON MINES LIMITED
 Diamond Drill Core Log

 DATE BEGUN: JAN 16/72 DEPTH: 360 BEARING: _____ UTM: 11AD56
 DATE FINISHED: JAN 24/72 ELEV. COLLAR: 3570 TOTAL DEPTH: 437 COAL LICENSE: _____
 LAT.: _____ HOLE ANGLE: -90° LOGGED BY: GPG CORE SIZE: 1/2" / 3/4"

B.C.A.	UNIT		UNIT THICKNESS		COAL SHEET	DESC. LOG	MARKER	DESCRIPTION	RECOVERY			
	From	To	Thick.	True					Int.	Fl.	Fl. Rec.	%
6 8								VERY POORLY SORTED CONG 80% CLAST & 60% BLACK RX FRAG. 20 FT TOGETH 20% LATE-SAND CEMENT				
	301	311	10				310	1' CARBONACEOUS MUD				
	311	312	1					TURBID BEDDING IN MED GREY GRAY SANDSTONE				
3 6	312	315	3				310	MASSIVE DK GRAY - BLACK CARBONACEOUS MUDSTONE WITH LATE REMAINS				
							320	GRADING INTO A FINELY BEDDED SAND SILTSTONE				
							330					
	315	339.8	24.8				340	6.2' HIGHLY CARBONACEOUS MUDSTONE & DIRTY COAL				
	339.8	346	6.2				350	MASSIVE MUDSTONE				
3 6							350	GRADING TO MASSIVE SAND SILTSTONE				
							360	BLACK DK GREY CARBONACEOUS FRAGS				

HOLE No: Q.D. 72-19 SHEET No: 7

DENISON MINES LIMITED
Diamond Drill Core Log

DATE BEGUN: Jan 16/72 DEPTH: 480 BEARING: _____ UTM: 114566
DATE FINISHED: JAN 26/72 ELEV. COLLAR: 3500 TOTAL DEPTH: 1337 COAL LICENSE: _____
A.I.: _____ HOLE ANGLE: 1-23° LOGGED BY: L.P.G. CORE SIZE: 1 1/2" / 3/4"

B.C.A.	UNIT		UNIT THICKNESS		COAL SHEET	DESC. LOG	MARKER	DESCRIPTION	RECOVERY			
	From	To	Thick.	True					Int.	Fr.	Fr. Rec.	%
	418.8	423.8	5.0						418.8	5%	5.2	100
							430	VERY POORLY SORTED CONGLOMERATE - SAND SIZE GREY SS. CEMENT WITH SOME CHAL - CONST RANGE IN SIZE FROM 2" DOWN TO 1/4"				
							440					
							450					
	423.8	455	31.2									
0° 10°							460	CLEAN MASS LT GREY S.S.				
							470					
							480					

HOLE No: QAD-72-19 SHEET No: 8

DENISON MINES LIMITED
Diamond Drill Core Log

DATE BEGUN: JAN 16 / 72 DEPTH: 540 BEARING: _____ UTM: 11A 956
DATE FINISHED: JAN 22 / 72 ELEV. COLLAR: 3500 TOTAL DEPTH: 137 COAL LICENSE: _____
AT: _____ HOLE ANGLE: 90° LOGGED BY: 12 P/G CORE SIZE: 1 1/8 / 3/4

B.C.A.	UNIT		UNIT THICKNESS		COAL SHEET	DESC. LOG	MARKER	DESCRIPTION	RECOVERY				
	From	To	Thick.	True					Int.	Fl.	Fr. Rec.	%	
	155	184	29					2" CLEAN COAL					
							450						
							500	STEEL WIRE					
							510						
							520						
	184	522	338					CLEAN	522	316	314	95	
							540						

2
1
5

HOLE No. QD72-19 SHEET No. 9

DENISON MINES LIMITED
Diamond Drill Core Log

DATE BEGUN: Jan 16 1972 DEPTH: 690 BEARING: _____ U.T.M.: 114056
DATE FINISHED: Jan 24 1972 ELEV. COLLAR: 3550 TOTAL DEPTH: 237 COAL LICENSE: _____
LAT.: _____ HOLE ANGLE: -90° LOGGED BY: IGPG CORE SIZE: 1 1/2 x 1 1/2

B.C.A.	UNIT		UNIT THICKNESS		COAL SHEET	DESC. LOG	MARKER	DESCRIPTION	RECOVERY					
	From	To	Thick.	True					Int.	Ft.	Ft. Rec.	%		
								MED GRAY SHALE						
	577.6	553.9					550							
								SAMPLE INTERVALS 1.6' SPAN	553.5	17.6	17.5	99		
								553.1 - 561.4 CLAMM	571.0					
								561.4 - 567.7 DARK BAND						
							560	561.7 - 566 CLAMM						
								566 - 571 DARK COAL						
								571 - 577 CLAMM						
	553.1	571	17.6				570		571					
3° 5°								SILT MUDSTONE						
	571.0	576.5	5.5					SLIGHTLY CARBONACEOUS						
								7.3 VERY WEAK & BRIGHT						
	576.5	583.8	7.3				580	(SANDSTONE)	576.5	7.3	7.3	100		
									583.8					
MASSIVE								MASSIVE LT. GRAY FINE GRAINED SANDSTONE						
WE								VERY LITTLE GLAUSSES						
							570	POODS / POODS GRAINED						
								WELL SORTED						

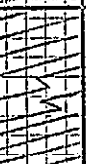
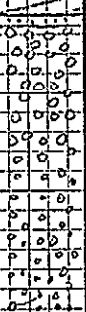

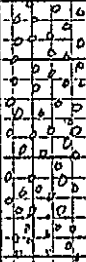
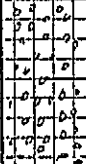
HOLE No: QD 72-19 SHEET No: 10

DENISON MINES LIMITED
Diamond Drill Core Log

DATE BEGUN: <u>JAN 6 / 72</u>	DEPTH: <u>637 FWD</u>	BEARING: _____	U.T.M.: <u>119050</u>
DATE FINISHED: <u>JAN 24 / 72</u>	ELEV. COLLAR: <u>3500</u>	TOTAL DEPTH: <u>637</u>	COAL LICENSE: _____
DATE: _____	HOLE ANGLE: <u>90°</u>	LOGGED BY: <u>GRC</u>	CORE SIZE: <u>1 1/2"</u>

B.C.A.	UNIT		UNIT THICKNESS		COAL SHEET	DESC. LOG	MARKER	DESCRIPTION	RECOVERY					
	From	To	Thick.	True					Int.	Fr.	Fr. Rec.	%		
	583.8	617	33.2				610							
4° 8'							620	FROM 617 TO END THE UNIT WAS VERY THINLY-BEDDED INTERVALS OF BLACK MUDSTONE WHICH DUE TO A RATHER CONSISTENT & PLANNAR BEDDING INDICATE A MORE TURBID ENVIRONMENT. SAND SIZE IN THE UNIT OVER THIS INTERVAL IS DECREASED SLIGHTLY.						
							630							
	617	637	20				640	END HOLE @ 637'						
							640	POWER OFF HOLE JAN 25/72 LEAVING 110 Rod TO 119' FROM COLLAR SO THAT B.P.B. LOGGER COULD PROBE HOLE						

HOLE No: QND71-21 SHEET No: 1DENISON MINES LIMITED,
Diamond Drill Core Log
 DATE-BEGUN: _____ DEPTH: 80 BEARING: _____ UTM.: 093071
 DATE FINISHED: _____ ELEV. COLLAR: 3800 TOTAL DEPTH: 157 COAL LICENSE: _____
 LAT.: _____ HOLE ANGLE: 450 LOGGED BY: GJG CORE SIZE: 1 7/8" 2 1/4"

B.C.A.	UNIT		UNIT THICKNESS		COAL SHEET	DESC. LOG	MARKER	DESCRIPTION	RECOVERY			
	From	To	Thick.	True					Int.	Fr.	Rec.	%
	0	31						OVERBURDEN - MOSTLY SAND & PEBBLES				
2'	31	47	31	31			3'	6" COARSE GR. S.S. GRADATIONAL CONGLOMERATE CLASTS FROM 1/2" - 1/2" 60% CLASTS ARE F.G. SS. WITH PARALLEL DEFINED FOLDED 30% CHERT & 10% BLACK OTZ RICH EX. HIGH FE CONTENT AND FLAT CEMENT				
3'	47	57					5'	MOD. CLEAN V.G. WHITE S.S. NO BEDDING BUT SOMEWHAT CONG.				
12'	57	84	10				5'	MOD. WELL SORTED MED. GR. CONGLOMERATE AVG. CLAST SIZE 1/2" IN A MATRIX OF COARSE SAND & WHITE CLAY WHICH OFTEN HAS Fe OXIDE STAINING - CEMENTING IS POOR - CORE MATERIAL & COAL FRAGS OCCUR SPORADICALLY				
3'							3'					

HOLE No: QND 74-21 SHEET No: 3

DENISON MINES LIMITED
Diamond Drill Core Log

DATE BEGUN: _____ DEPTH: 200 BEARING: _____ U.T.M.: 093071
DATE FINISHED: _____ ELEV. COLLAR: 1400 TOTAL DEPTH: 527 COAL LICENSE: _____
LAT.: _____ HOLE ANGLE: 1° 20' LOGGED BY: K.M.G. CORE SIZE: 1 1/2" DIA

B.C.A.	UNIT		UNIT THICKNESS		COAL SHEET	DESC. LOG	MARKER	DESCRIPTION	RECOVERY				
	From	To	Thick.	True					Int.	Ft.	Ft. Rec.	%	
4'								CARBONACEOUS MUDSTONE WITH SEAPH. ETCS S. COALIFEROUS FLORA ZONE					
4'								8" FAIRLY CLEAN BUT HEAVY BREKEN COAL 6" CLEAN COAL					
6'	139.8	174	34.2					Box 103 11 7' SEAM CLEAN VITRAN Banded 30% CLARAN 70%					
2'	174	181	7					SAMPLED AS A WHOLE	174	181	7	7	100
3' 6"								MED GRAY MED GRAY MASSIVE SANDSTONE SALT & PEPPER TEXTURE DIZ. CL. CEMENT or BASALT DR. RX. TRIPS					

HOLE No: QWD71-21 SHEET No: 4

DENISON MINES LIMITED

Diamond Drill Core Log

DATE BEGUN: _____ DEPTH: 260 BEARING: _____ U.T.M.: 093071
 DATE FINISHED: _____ ELEV. COLLAR: 3500 TOTAL DEPTH: 557 COAL LICENSE: _____
 L.A.L.: _____ HOLE ANGLE: 790° LOGGED BY: GFG CORE SIZE: 1 1/2"

B.C.A.	UNIT		UNIT THICKNESS		COAL SHEET	DESC. LOG	MARKER	DESCRIPTION	RECOVERY				
	From	To	Thick.	Type					Int.	Ft.	Ft. Rec.	%	
							210						
							225						
							230						
							240						
							250						
							260						

HOLE No: Q-D77-21 SHEET No: 5

DENISON MINES LIMITED
 Diamond Drill Core Log

DATE BEGUN: _____ DEPTH: 320 BEARING: _____ U.T.M.: 093071
 DATE FINISHED: _____ ELEV. COLLAR: 3000 TOTAL DEPTH: 552 COAL LICENSE: _____
 LAT.: _____ HOLE ANGLE: 75° LOGGED BY: GAG CORE SIZE: 1 1/2"

B.C.A.	UNIT		UNIT THICKNESS		COAL SHEET	DESC. LOG	MARKER	DESCRIPTION	RECOVERY					
	From	To	Thick.	True					Int.	Fr.	Fr. Rec.	%		
							570							
	181	251	700				280							
							200							
							50							
							310							
							320							

HOLE No: QWD 71-21 SHEET No: 7

DENISON MINES LIMITED
 Diamond Drill Core Log

DATE BEGUN: _____ DEPTH: 440 BEARING: _____ UTM: 093071
 DATE FINISHED: _____ ELEV. COLLAR: 3800 TOTAL DEPTH: 557 COAL LICENSE: _____
 HOLE ANGLE: 7.90° LOGGED BY: GRG CORE SIZE: 1 1/2" DIA

B.C.A.	UNIT		UNIT THICKNESS		COAL SHEET	DESC. LOG MARKER	DESCRIPTION	RECOVERY				
	From	To	Thick.	True				Int.	Ft.	ft. Rec.	%	
T R B I D						380						
						400						
		403				410	MASSIVE FINE GRAINED SANDSTONE THIN - LATERAL PRESS BEDS AND MASSES WITH A FEW ZONES OF BLACK MUDSHALE					
						420	FINE GRAINED MISSOUIE FLAKES DISSEM THROUGHOUT THE UNIT - CALCITE FINE FRAMES OF WEARINESS WITH CH OCCUR @ 25° 12' C.A. AND ^{GEN.} WIDE SW					
						430	IRREGULAR JURAGE - FEW MINOR CARBONACEOUS ZONES					
	403	432	29			440	CROSS BEDDED FINEGRAINED SANDSTONE MED GREY MOD. WELL SORTED. LARGE INT OF BLACK SHALE THROUGHOUT WITH HARD MINERALITE CALCITE					

HOLE No: QW D74-21 SHEET No: 8

DENISON MINES LIMITED
Diamond Drill Core Log

DATE BEGUN:	DEPTH: <u>557</u>	BEARING:	U.T.M.: <u>Q950711</u>
DATE FINISHED:	ELEV. COLLAR: <u>3350</u>	TOTAL DEPTH: <u>457</u>	COAL LICENSE:
A.T.E.:	HOLE ANGLE: <u>490°</u>	LOGGED BY: <u>SPG</u>	CORE SIZE: <u>HTS 2 1/2"</u>

B.C.A.	UNIT		UNIT THICKNESS		COAL SHEET	DESC. LOG	MARKER	DESCRIPTION	RECOVERY				
	From	To	Thick.	True					Int.	Fr.	Fr. Rec.	%	
5° ↓ 30°													
X18E	432	452	20				450						
16°													
12°							470	MASSIVE FINE GRAINED MED GREY SANDSTONE WITH INTERBEDDED BLACK CARB SHALES - SHALES OCCUR IN THIN DISTORTED BEDS - S.S. TRACING SHALE FRAG ZONE & HAVE MINOR PYRITE CALCITE NODULES - FINE SAND MATRIX HAS A VERY CONSISTENT GRAIN SIZE					
15°							490						
	483	557	69					MOOSEBAR FORMATION (MARINE SHALE & MUDST.) ABOUT CONTACT @ 483' SEE LOG QW D74-19 DIFFERENTIARY FOR DESC.					
							557	END HOLE					

HOLE No: 20-7120 SHEET No: 1

DENISON MINES LIMITED
Diamond Drill Core Log

DATE BEGUN: December 14, 71 DEPTH: _____ BEARING: _____ U.T.M.: _____
 DATE FINISHED: _____ ELEV. COLLAR: 1' TOTAL DEPTH: _____ COAL LICENSE: _____
 LAT.: _____ HOLE ANGLE: VERTICAL LOGGED BY: R. GEE CORE SIZE: NO

B.C.A.	UNIT		UNIT THICKNESS		COAL SHEET	DESC. LOG, 1"=20'	MARKER	DESCRIPTION	RECOVERY			
	From	To	Thick.	True					Int.	Ft.	Ft. Rec.	%
0	0	132	132					<p>LABELED TO 129 Feet</p> <p>OVER BURDEN of mixed lithology, rock material dispersed with yellowish brown sand.</p>				



DATE BEGUN: _____ DEPTH: _____ BEARING: _____ U.T.M.: _____
 DATE FINISHED: _____ ELEV. COLLAR: _____ TOTAL DEPTH: _____ COAL LICENSE: _____
 LAT.: _____ HOLE ANGLE: _____ LOGGED BY: R. Lee CORE SIZE: 1 1/2

B.C.A.	UNIT		UNIT THICKNESS		COAL SHEET	DESC. LOG	MARKER	DESCRIPTION	RECOVERY			
	From	To	Thick.	True					Int.	Ft.	Ft. Rec.	%
	132	137	5					Broken core, grey to light blue siltstone, fine grained structureless, gradual to	132 137	5	3	60
	137	142	5					Siltstone, very fine grained structureless, light blue to light grey, gradual boundary to	142	5	4	80
	142	152	10					Interbedded s.s. and siltstones, ss. band 7 feet thick begins unit otherwise, sandin wrigs and flutes, mudstone towards the surface, gradual to carbonaceous mudstone dark grey and black.	152	10	9	90
0°?	152	162	10					medium-fine grained grey s.s., cross bedded, erosional boundaries, B.C.A. 0° at erosional boundaries gradual to	162	R.D.	9.5	95%
20°	162	170	8					Strat sandstone, grey, fine grained, mudstone wrigs 1-4mm. thick, carbonaceous, pyrite, in mudstone, joints oxidized to siltstone, with medium grained s.s. wrigs bottomed by pebble conglomerate with pebbles 7/16 - 1/4 dia. rounded subangular, poorly sorted, joint plane at bottom severe slicks, etc.	170	8	7.6	90
	200	201.5	1.5					Dark blue grey argillaceous mudstone, fossiliferous small traces of plant material carbonized, structureless except for variable 2-3 ft sections of diffuse layers increased amounts of very fine sand, very highly broken, unit becomes blue black towards bottom of unit.	200	20	18	90
	201.5	249.0	47.5					Interbedded fine grained s.s., siltstone + mudstone gradual to				
								Black fine grained fossiliferous mudstone, coal lenses and thin beams, carbonaceous partings, mudstone generally structureless.	250	50	40	80
								235-235.5 - Duraine/Vittraine 130/60/				
								2416-2436 - Claraine/Vittraine 180/20/				
								2486-249.0 - Claraine/Vittraine 90/10/				
								2416-2496				

DENISON MINES LIMITED
 Diamond Drill Core Log

DATE BEGUN: _____ DEPTH: _____ BEARING: _____ U.T.M.: _____
 DATE FINISHED: _____ ELEV. COLLAR: _____ TOTAL DEPTH: _____ COAL LICENSE: _____
 LAT.: _____ HOLE ANGLE: _____ LOGGED BY: J. G. W. CORE SIZE: NQ

B.C.A.	UNIT		UNIT THICKNESS		COAL SHEET	DESC. LOG	MARKER	DESCRIPTION	RECOVERY				
	From	To	Thick.	True					Int.	Ft.	Ft. Rec.	%	
20°	244	261	12					- mudstone with fine grained ss. wisps, small x beds gradational boundary to.	250				
	261	276	15					- muddy sandstone, first ft. blue grey fine grained rest 3 feet grey, medium grained ss, return to x bedded, fine grained muddy sandstone. lower part carbonaceous, convoluted irregular erosional boundary on the bottom, gradational top, to	260	10	9.7	97	
	276	289	1.3					- dark blue grey siltstone, with sand wisps and x bedding, carbonaceous, pyrite, flake casts. abrupt boundary to:	276	6	6	100	
20°	284	298.9	9.9					- Coal - two dirt bands .4ft and 1ft. abrupt contact to	296	10	9.7	97	
	298.9	322	36.9					- coarse grained ss. changing rapidly to chert pebble conglomerate: angular, clasts, poorly sorted, chert white black, green, quartz matrix + litho fragments, gradational increase in size down section, 2 such sequences. abrupt contact to.	296	10			
								- mostly coarse sand, with, pebble congl. layers. as above.	304	10	9.5	95	
								- 324.7 - 326.2 - broken + oxidized core - lost circulation here.	316	10	9.0	90	
20°	322	333.9	11.9					- massive fine grained, clean, grey ss., odd clasts. in upper 1.5 feet, 336 carbonaceous streaks, slight cross bedding, bottom has mudstone wisps, contact irregular but abrupt to.	324	10	9.9	99	
	333.9	363.0	29.1					- interbedded unit of carbonaceous shale, all grey blue, and light grey ss., fine grained, x bedded with blue black mudstone wisps. gradational, contact to	326	10	9.8	98	
	363.0	374.0	11.0					- argillaceous mudstone, blue grey - blue black with sand wisps in upper 7 feet.	354	10	9.4	94	
	374.0	384	10						364	10	9.6	96	
									374	10	9.0	90	
									384	10	8.1	89	



DATE BEGUN: _____ DEPTH: _____ BEARING: _____ U.T.M.: _____
 DATE FINISHED: _____ ELEV. COLLAR: _____ TOTAL DEPTH: _____ COAL LICENSE: _____
 LAT.: _____ HOLE ANGLE: _____ LOGGED BY: R. Gee CORE SIZE: _____

B.C.A.	UNIT		UNIT THICKNESS		COAL SHEET	DESC. LOG	MARKER	DESCRIPTION	RECOVERY			
	From	To	Thick.	True					Int.	Ft.	Ft. Rec.	%
20°	384.1	390.4	6.3				384.5-382.1 gradational boundary to light grey, fine grained, bedded sandstone, odd. blue black wisp of shaly mudstone, gradational boundary to broken core of blue black structureless argillaceous shale.	396	10	9.4	90	
	390.6	392.4	2				conglomerate of chert pebbles, in mudstone matrix. abrupt contact to	406	10	8.6	86	
	392.4	394.6	2				coal, abrupt contact to <u>Buff</u>	416	10	9.4	94	
	394.6	398.2	3.6				conglomerate with coal matrix, angular clasts 1/2" dia., lithofragments and chert.	426	10	102	100	
	398.2	399.	.7				grey black argillaceous shale, structureless, gradational to	436	10	10	100	
	399.	400.2	1.2				chert pebble conglomerate, fine grained sandstone matrix, chert clasts decreasing in size and no. down hole, shale matrix at start of unit, clasts green chert, mixed lithology, variable textured matrix, angular clasts of moderate sorting; carbonaceous partings in part, gradational to.	446	10	10	100	
	400.2	412.5	12.3					456	10	10	100	
	412.5	529.2	7				sandstone with variable pebble layers.	466	10	10	100	
25°							476- broken core; calcite veined darker, bluegrey from 502-529, fine to medium grained, cross bedded in part, erosional contacts sharp boundaries between sandstone intervals. sharp boundary to.	476	10	10	100	
								486	10	10	100	
								496	10	10	100	
								506	10	10	100	

No: QMD-71-20 SHEET No: (Cont) 5

DENISON MINES LIMITED
Diamond Drill Core Log

DATE BEGUN: Dec 17/71 DEPTH: 580 BEARING: _____ U.T.M.: 101071
 DATE FINISHED: Jan 6/72 ELEV. COLLAR: 2760 TOTAL DEPTH: 627 COAL LICENSE: _____
 LAT.: _____ HOLE ANGLE: -19° LOGGED BY: GPS CORE SIZE: NO. 3 1/2" HOLE

B.C.A.	UNIT		UNIT THICKNESS		COAL SHEET	DESC. LOG	MARKER	DESCRIPTION	RECOVERY		
	From	To	Thick.	True					ft.	ft.	%
								LOG UP TO 530' BY R.G. GEE DEC 71			
	529.2	530.2	1			530	1.3' CLEAN COAL				
	530.2	531.5									
	531.5	540.6	9.1			540	F.G. SILTY MUDSTONE				
	540.6	542.8	2.2				* VERY HIGH CALICHE & PYRITE SOME				
						550	NO CORE STARTS HERE SHEARINGS IN ZONES OF HIGH ANGLE DISTURB				
15°						600					
	5428	563	20.2				IF ANY REMAINS CALIBERED IN OTHER HOLE				
	563	569	6			570	CLEAN COAL 130' 32' 32'				
	569	576.7	7.7				7.7' SAMPLED AS A/H HOLE	569	576.7	7.4' 96%	
0°						580					

Used as
Rock's stuck
in coal seam

0150-101

KE 10 X 10 TO THE INCH 46'0780
7 X 10 INCHES MADE IN U.S.A.
KEUFFEL & ESSER CO.

JLE No: QuD-71-20 SHEET No: Coff 60

DENISON MINES LIMITED
Diamond Drill Core Log

DATE BEGUN: <u>DEC 13/71</u>	DEPTH: <u>627</u>	BEARING: _____	U.T.M.: <u>101071</u>
DATE FINISHED: <u>JAN 6/72</u>	ELEV. COLLAR: <u>3760</u>	TOTAL DEPTH: <u>627</u>	COAL LICENSE: _____
AT: _____	HOLE ANGLE: <u>98</u>	LOGGED BY: <u>GPG</u>	CORE SIZE: <u>NO 1 3/4</u>

B.C.A.	UNIT		UNIT THICKNESS		COAL SHEET	DESC. LOG	MARKER	DESCRIPTION	RECOVERY				
	From	To	Thick.	True					Int.	Fr.	Fr. Rec.	%	
								MASSIVE FINE SAND & PEPPER S.S.					
							502	NO CLAY MATERIAL OR CLAY FOUNDED					
								MED. GREEN WELLSORTED & COMPACTED					
							600						
							610						
							620						
	<u>5767</u>	<u>627</u>	<u>503</u>					END HOLE 627					
	<u>503</u>						630						

ROKE

GAMMA RAY NEUTRON LOG

OIL ENTERPRISES LTD. CALGARY, ALBERTA

FILE NO.	COMPANY	WELL	LOCATION	FIELD	PROVINCE
LSD	HEINSON MINES LTD.	R-SQULETTE #1	R-SQULETTE, MTN	R-SQULETTE 71(S)A	BRITISH COLUMBIA
SEC					
TWP					
RGE					
W					
M					
Permanent Datum	GEN. VD. LEVEL	Elev.	K.B.		
Log Measured from	CAJONNA LEVEL	Fl. Above Perm. Datum	D.F.		
Well Depth: Measured from			G.L.		
Run No.	ONE	Date	20 FEB 71		
First Reading	570				
Last Reading	0				
Footage Logged	570				
Depth Reached	571				
Depth Dialer					
Casing Driller					
Casing Roller					
Fluid Type	WATER				
Liquid Level	FILL				
Min. Diam.	11 0				
Operation Time	5:10 P.M.				
Truck No.	10	Witnessed By	CHOWRY		
Recorded By	SINBERLAND				

597

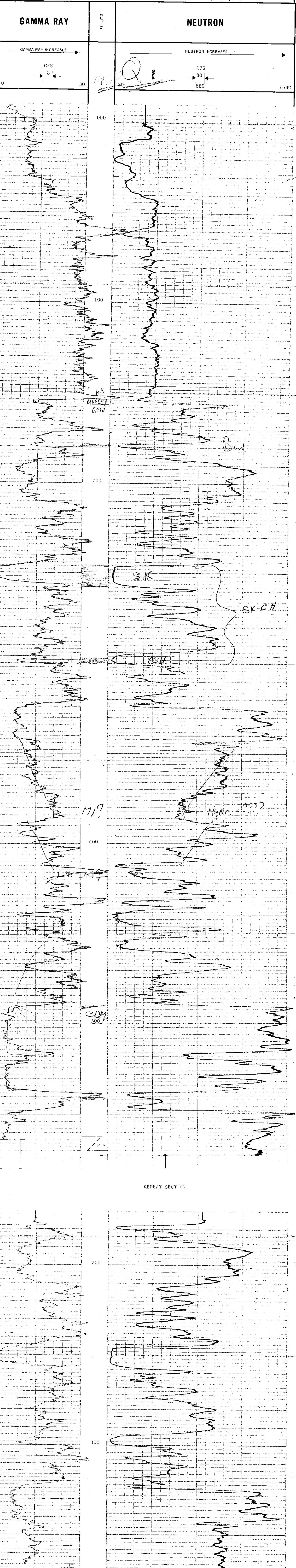
EQUIPMENT DATA

GAMMA RAY				NEUTRON			
RUN NO.	ONE	RUN NO.	ONE				
TOOL MODEL NO.		LOG TYPE	NEUTRON/NEUTRON				
DIAMETER	1 1/8	TOOL MODEL NO.					
DETECTOR MODEL NO.		DIAMETER	1 1/8				
TYPE	GEIGER	DETECTOR MODEL NO.					
LENGTH	18 INCH	TYPE	PROPORTIONAL				
DISTANCE TO N. SOURCE	8.55 FT	LENGTH	6 INCH				
		SOURCE MODEL NO.	MRC-N-SS-W				
		SERIAL NO.	606				
HOIST TRUCK NO	#30	SPACING	19 INCH				
INSTRUMENT TRUCK NO		TYPE	AmBe				
TOOL SERIAL NO	CGN2714A78	STRENGTH	7.00 x 10 ⁶ N/S				

LOGGING DATA

GENERAL				GAMMA RAY				NEUTRON			
RUN NO.	FROM	TO	SPEED FT/MIN	T.C. SEC.	SENS SETTINGS	ZERO DIV. L OR R	API GR. UNITS PER LOG DIV.	T.C. SEC.	SENS SETTINGS	ZERO DIV. L OR R	API N. UNITS PER LOG DIV.
1	0	570	10	5	100	0L	8 CPS	3	1000	1L	80 CPS

REMARKS: Note: Angle table logged through 100' depth. Angle 35°



PC-QUINTEITE 71(3)A

ROKEL

GAMMA RAY NEUTRON LOG

OIL ENTERPRISES LTD. CALGARY, ALBERTA

FILE NO. _____

COMPANY DENISON MINES LTD.

WELL QUINTEITE #2

LOCATION QUINTEITE MIN

FIELD _____

PROVINCE BRITISH COLUMBIA

Permanent Datum GROUND LEVEL Elev. _____

Log Measured from GROUND LEVEL. Ft. Above Perm. Datum _____

Well Depths Measured from _____

Run No. ONE

Date 28 FEB 71

First Reading 603

Last Reading 7

Footage Logged 596

Depth Reached 604

Depth Driller _____

Casing Hole _____

Casing Driller _____

Fluid Type WATER

Liquid Level _____

Mfn. Dam. _____

Operating Time 3 HOURS

Truck No. 30

Recorded By SUNTERIAUD

Witnessed By CROMBIE

597

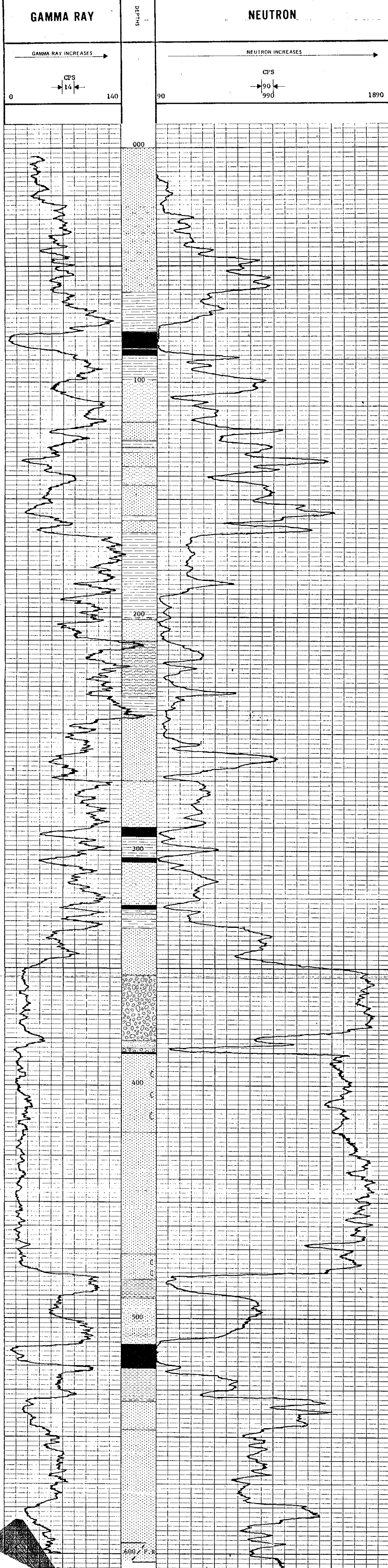
EQUIPMENT DATA

GAMMA RAY				NEUTRON			
RUN NO	ONE			RUN NO	ONE		
TOOL MODEL NO				LOG TYPE	NEUTRON/NEUTRON		
DIAMETER	1 11/16			TOOL MODEL NO	1 11/16		
DETECTOR MODEL NO				DETECTOR MODEL NO			
TYPE	GEIGER			TYPE	PROPORTIONAL		
LENGTH	18 INCH			LENGTH	6 INCH		
DISTANCE TO N SOURCE	8.55 FT			SOURCE MODEL NO.	MRC-N-SS-W		
GENERAL				SERIAL NO	606		
HOIST TRUCK NO	#30			SPACING	19 INCH		
INSTRUMENT TRUCK NO				TYPE	AmBe		
TOOL SERIAL NO	CGN27U4A78			STRENGTH	7.00 x 10 ⁶ N/S		

LOGGING DATA

RUN NO	GENERAL			GAMMA RAY				NEUTRON			
	FROM	TO	SPEED FT/MIN	T.C. SEC	SENS SETTINGS	ZERO DIV L OR R	API GR UNITS PER LOG DIV	T.C. SEC	SENS SETTINGS	ZERO DIV L OR R	API N. UNITS PER LOG DIV
ONE	7	603	10	5	100	OL	14 CPS	3	1000	IL	90 CPS

REMARKS Angle hole through H.Q. drill rod





GAMMA, H. R. D. & NEUTRON LOG

QD 71-15
100' 15" 100'

PERMITS 71(3) 2

COMPANY DENISON MINES LTD.

BOREHOLE QD 71-15

STATE B. C. COUNTRY CANADA

Permanent Datum Elev. Ft.

Log measured from GROUND LEVEL Ft. above P.D.

Drilling measured from Ft. above P.D.

Run No. Depth Scale 30 f. /

Date 8. 12. 71

First Reading

Last Reading

Inverted Measured

Counting SRB 6.0

Counting SRB 6.0

Depth Received 14.57

Bottom Driller 14.57

Mud Nature

S.G. Viscosity

Bit Size 1

Counting Size 2

Operating Time

Truck No. 4

Recorded By H.S.B.

Witness

597

HOLE DATA

Customer DENISON MINES

Contractor LONGYEAR

Date Logged 8. 12. 71

Date Drilled

Borehole QD 71-15

TOOL DATA

Sonde

Normaliser

Logging speed

Time constant

Spacing

Source type

Source strength

QND

71-15

PANEL DATA

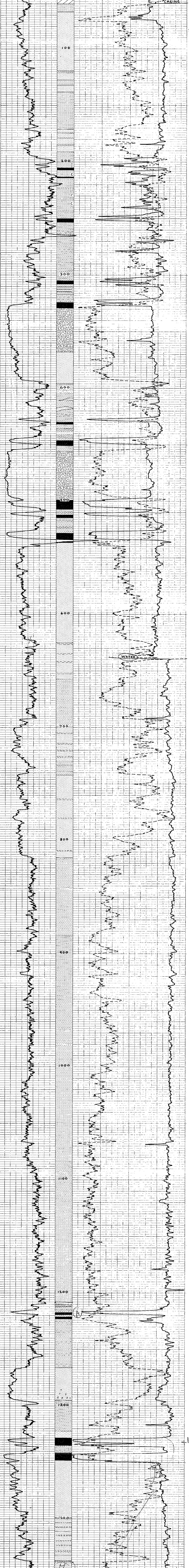
Ratemeter

COMMENTS

WATER LEVEL AT 639'

CALIBRATION AND SCALES

Track 1	Depth (Scale)	Track 2	Track 3
GAMMA TC2 530	10' : 1"	H. R. DENSITY Tc1	H. R. DENSITY S30
		10000	6500
		8500	5000
		1400	800
		400	750



W 32849

MA. H. R. D. & NEUTRON LOG

SONI MINES LTD.

Q.D.71-15

COUNTRY CANADA

GROUND LEVEL Ft. above P.D.

8.2.71

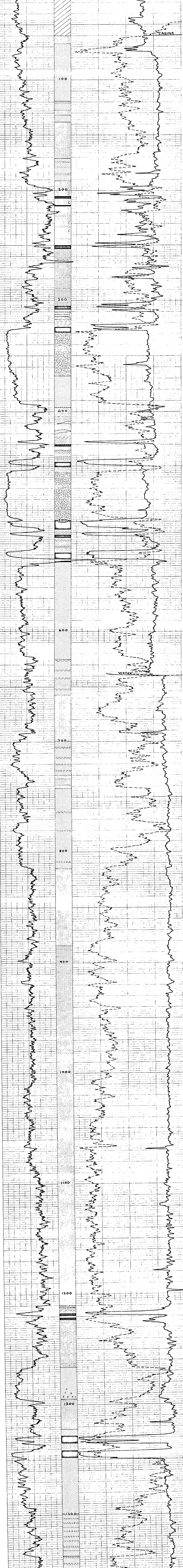
Logging 998 60'
 Depth Reached 1957'
 Bottom Driller 1957'

597

HOLE DATA		TOOL DATA		PANEL DATA
Customer DENISON MINES	Sonde	Source type	Ratemeter	
Contractor LONGYEAR	Normaliser	Source strength		
Date Logged 8.12.71	Logging speed			
Date Drilled	Time constant			
Borehole Q.D.71-15	Spacing			

COMMENTS
 WATER LEVEL AT 639'

CALIBRATION AND SCALES				
Track 1	Depth (Scale)	Track 2	Track 3	
CAMMA TC2 S30		H. R. DENSITY TC1	S30	
	10,000	IN AIR	6500	
	8,500	IN WATER	5000	
	1,400	NEUTRON TC2	S30	
	400	IN AIR (INVERTED)	800	
		IN WATER	750	



PC-OUMTEITE 71(3)A1



GAMMA, H.R.D. & NEUTRON LOG

COMPANY DENISON MINES LTD.
BOREHOLE QD71-18
STATE B. C. **COUNTRY** CANADA
Permanent Datum : Elev. ___ Ft.
Log measured from GROUND LEVEL Ft. above P.D.
Drilling measured from Ft. above P.D.
Run No. 10, 12, 71
Date 10. 12. 71
First Reading 20' : 1"
Last Reading _____
Interval Measured _____
Casing BPH 120'
Casing Driller 120'
Depth-Reached 577'
Bottom Driller 577'
Mud Nature _____
SG _____
Viscosity _____
Bit Size 1 _____
2 _____
Casing Size _____
Operating Time _____
Track No. 5
Recorded By H. S. B.
Witness _____

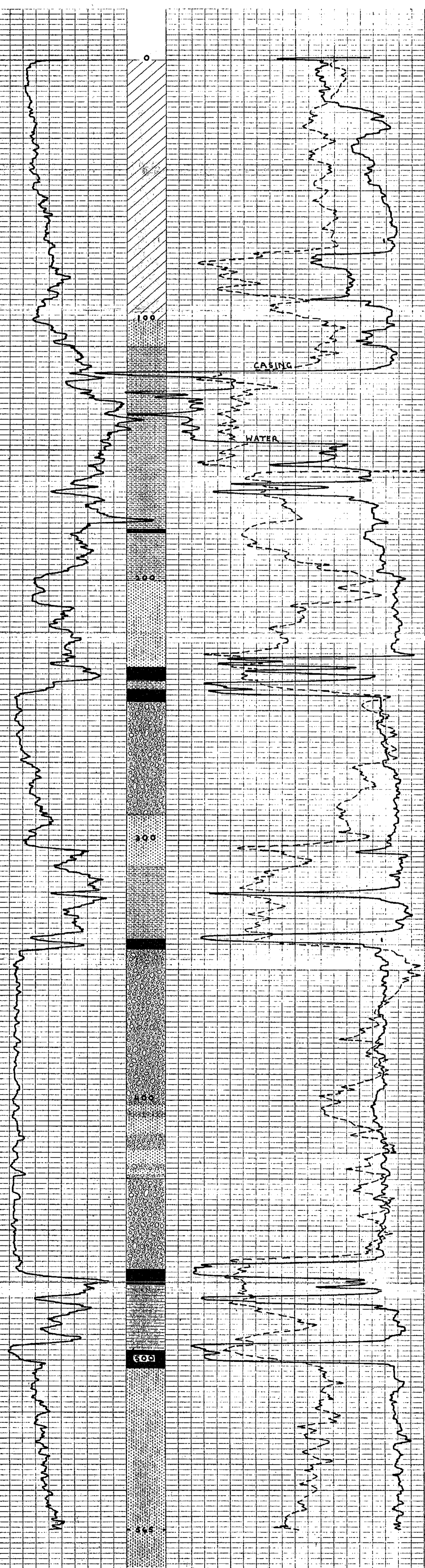
HOLE DATA	TOOL DATA	PANEL DATA
Customer DENISON MINES	Sonde	Rate meter
Contractor LONGYEAR	Normaliser	Source type
Date Logged 10. 12. 71	Logging speed	Source strength
Date Drilled	Time constant	
Borehole QD71-18	Spacing	

COMMENTS

WATER LEVEL AT 147'

CALIBRATION AND SCALES

Track 1	Depth (Scale)	Track 2	Track 3
GAMMA TC2 S30		H.R. DENSITY TCI S30	
	8500		5000
	20' : 1"	NEUTRON TC2 S30	
	300	IN WATER	
	1200	IN AIR	
	150		800
			500





GAMMA, H.R.D. & NEUTRON LOG

22-0007677(15) A

SONORVILLE - STOKESBOROUGH 1889

COMPANY DENISON MINES LTD.

BOREHOLE QD71-18

STATE B.C. COUNTRY CANADA

Permanent Datum : Elev. Ft. _____

Log measured from GROUND LEVEL Ft. above P.D. _____

1. Drilling measured from _____ Ft. above P.D. _____

Run No. / Depth Scale 20' : 1"

Date 10.12.71

First Reading _____

Last Reading _____

Interval Measured _____

Casing BFB 12.0'

Casing Driller 12.0'

Depth Reached 570'

Bottom Driller 577'

Mud Nature _____

S.G. Viscosity _____

Bit Size 1 _____ to _____

Bit Size 2 _____ to _____

Casing Size _____

Operating Time _____

Track No. 5

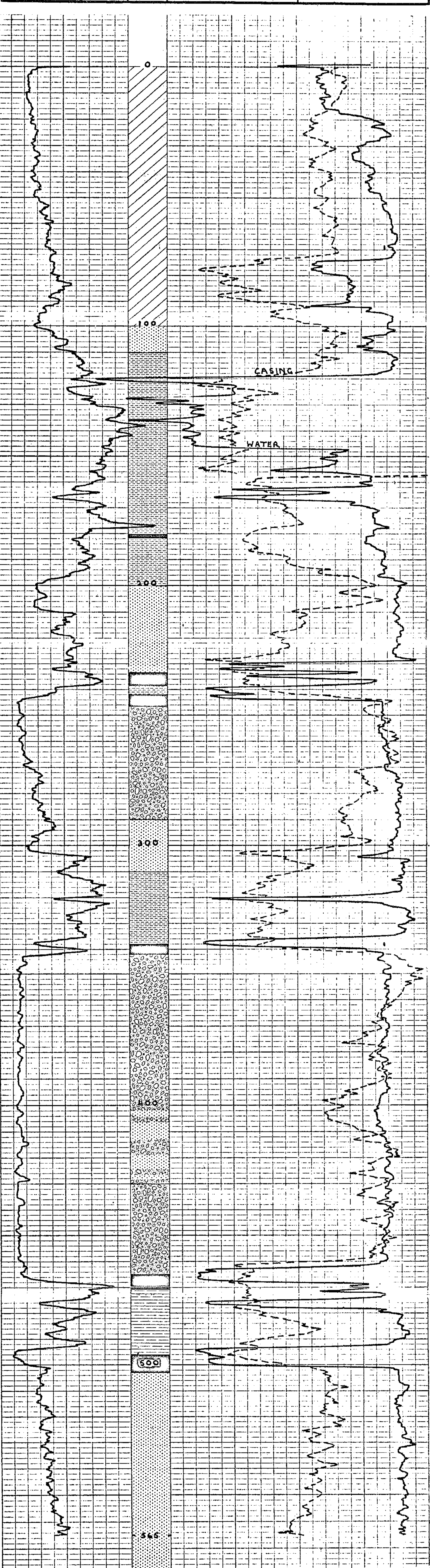
Recorded By H. J. B.

Witness 597

HOLE DATA		TOOL DATA		PANEL DATA
Customer <u>DENISON MINES</u>	Sonde	Source type		Rate meter
Contractor <u>LONGYEAR</u>	Normaliser	Source strength		
Date Logged <u>10.12.71</u>	Logging speed			
Date Drilled	Time constant			
Borehole <u>QD71-18</u>	Spacing			

COMMENTS
 WATER LEVEL AT 147'

CALIBRATION AND SCALES			
Track 1	Depth (Scale)	Track 2	Track 3
<u>GAMMA TC2 S30</u>		<u>H.R. DENSITY TCI S30</u>	
	<u>20' : 1"</u>	<u>NEUTRON TC2 S30</u>	
		<u>IN WATER</u>	<u>800</u>
		<u>IN AIR</u>	<u>500</u>
	<u>150</u>		





Gamma, H.R.D. & Neutron Log
(Retraced)

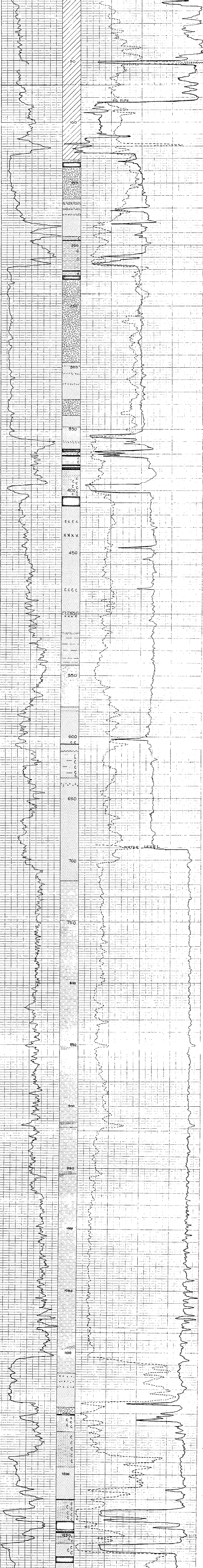
SONNETTE
17 Waverly St. (1st)

COMPANY Denison Mines Ltd
 BOREHOLE Wolverine D7117
 STATE B.C. COUNTRY CANADA
 Permanent Datum : Elev. Ft. _____
 Log measured from : Ft. above P.D. _____
 Drilling measured from : Ft. above P.D. _____
 Run No. Depth Scale 25 172
 Date _____
 First Reading _____
 Interval Measured _____
 Logging Borehole _____
 Logging Depth _____
 Logging Date _____
 Logging Time _____
 Logging Operator _____
 Logging Assistant _____
 Logging Supervisor _____
 Logging Engineer _____
 Logging Foreman _____
 Logging Technician _____
 Logging Helper _____
 Logging Watchman _____
 Logging Driver _____
 Logging Operator _____
 Logging Assistant _____
 Logging Supervisor _____
 Logging Engineer _____
 Logging Foreman _____
 Logging Technician _____
 Logging Helper _____
 Logging Watchman _____
 Logging Driver _____

HOLE DATA	TOOL DATA	PANEL DATA
Customer Denison Mines	Sonde 4 & 18	Rate meter
Contractor Longyear	Normaliser	
Date Logged 25.1.72	Logging speed	
Date Drilled	Time constant	
Borehole Wolverine D71-17	Spacing	

COMMENTS
 Top of sonde catches at 50'.
 Water Level 690'

CALIBRATION AND SCALES			
Track 1	Depth (Scale)	Track 2	Track 3
Gamma		HR Density	
T.C. 2		6000 - 4000 T.C.I.	S 40
S 30	20'-1"	Neutron	T.C.I. S 40
0 - 150		0 - 85'	0 - 500
		85' - 690'	0 - 2,000
		690' - T.D.	0 - 600



597



Gamma HRD & Neutron Log
(Retraced)

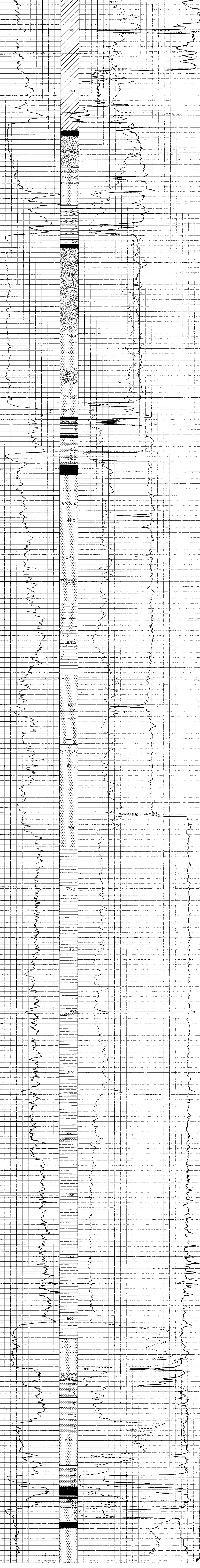
COMPANY Denison Mines Ltd
BOREHOLE Wolverine D7117
STATE B.C. **COUNTRY** CANADA
Permanent Datum : Elev. _____ Ft.
Log measured from : _____ Ft. above P.D.
Drilling measured from : _____ Ft. above P.D.
Run No. Depth Scale 25, 172
Date _____
First Reading _____
Last Reading _____
Interval Measured _____
Casing B/B _____
Casing Depth _____
Depth Reached 1292
Bottom Driller _____
Tool Number 1303
Tool Viscosity _____
Bit Size 1 HQ 84 to 84 HQ Pipe left in hole to _____
Casing Size 2 NQ 84 to TD
Operating Time _____
Truck No. 5
Recorded By M Young
Witness _____

HOLE DATA	TOOL DATA	PANEL DATA
Customer Denison Mines	Sonde 4 & 18	Source type
Contractor Longyear	Normaliser	Source strength
Date Logged 25.1.72	Logging speed	Rate meter
Date Drilled	Time constant	
Borehole Wolverine D71-17	Spacing	

COMMENTS
Top of sonde catches at 50'
Water Level 690'

CALIBRATION AND SCALES

Track 1	Depth (Scale)	Track 2	Track 3
Gamma		HR Density TCI S 40	
T.C. 2		-----Neutron TCI S 40-----	
S 30	20'-1"	0 - 85'	0 - 500
0 - 150		85' - 690'	0 - 2,000
		690' - T.D.	0 - 600



PR-OUIVETTE 71(3)A2



Gamma, H R D and Neutron

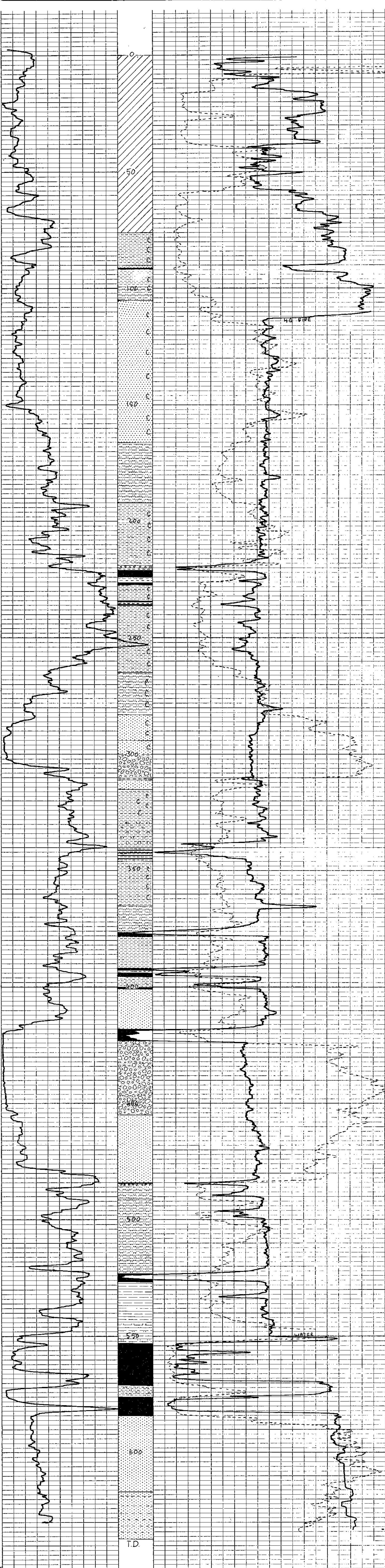
COMPANY Denison Mines Ltd
BOREHOLE WOLVERINE DZ119
STATE G.C. **COUNTRY** Canada
Permanent Datum : Elev. Ft. _____
Log measured from : Ft. above P.D. _____
Drilling measured from : Ft. above P.D. _____
Run No. / Depth scale 70'-1"
Date 26/1/72
First Reading _____
Interval Measured _____
Casing BPH _____
Casing Driller _____
Depth Reached 630
Bottom Driller 412
Mud Nature _____
SG _____
Viscosity _____
Bit Size 1 HQ 0 to 114' Pipe left in Hole to _____
Casing Size 2 NQ 114' to TD
Operating Time _____
Track No. 5
Recorded By H. Youlton
Witness _____

HOLE DATA		TOOL DATA		PANEL DATA
Customer	DENISON MINES	Sonde	.4	Rate meter
Contractor	CANADIAN LONGYEAR	Normaliser		
Date Logged	26/1/72	Logging speed		
Date Drilled		Time constant		
Borehole	WOLVERINE DZ119	Spacing		

COMMENTS
 NEUTRON LOG NOT REVERSED IN AIR.
 LOGGED THROUGH HQ PIPE TO 114'

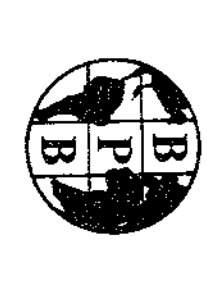
CALIBRATION AND SCALES

Track 1	Depth (Scale)	Track 2	Track 3
GAMMA		HR DENSITY	T.C.1 540
T.C.2 530		0-114'	6,000 - 3,000
0 - 150	20'-1"	114'-TD	6,500 - 3,500
		0-114'	NEUTRON
		114'-TD	0 - 1,000 T.C.1 540
			0 - 300



597

MT 2344



Gamma, H.R.D. and Neutron

COMPANY DENISON MINES LTD.

BOREHOLE WOLVERINE D 21-20

STATE BC COUNTRY CANADA

Permanent Datum : Elev. Ft.

Log measured from : Ft. above P.D.

Drilling measured from : Ft. above P.D.

Run No. Depth Scale 20'-1"

Date 27/1/72

First Reading

Last Reading

Interval Measured

Casing BPP 130'

Casing Driller

Depth Reached 524'

Bottom Driller 627

Mud Nature

S.G. Viscosity

Bit Size 1 HQ

Casing Size 2

Operating Time

Track No. 5

Recorded By M. YOUNG

597

fold here

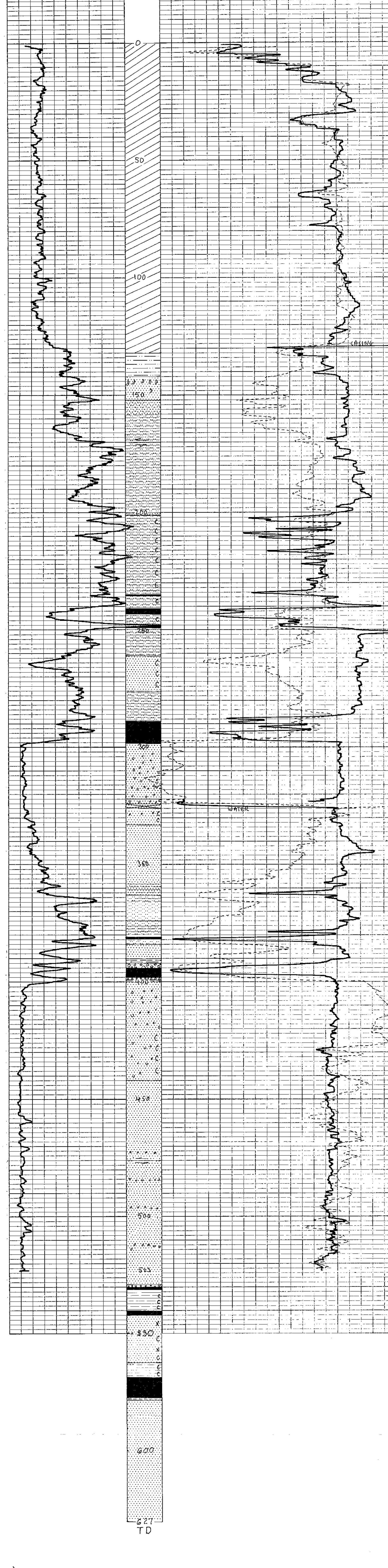
HOLE DATA	TOOL DATA	PANEL DATA
Customer DENISON MINES	Sonde # 4 9#18	Ratemeter
Contractor LONGYEAR	Normaliser	
Date Logged 27/1/72	Logging speed	
Date Drilled	Time constant	
Borehole WOLVERINE D 21-20	Spacing	

COMMENTS

HOLE BLOCKED AT 524'
WATER LEVEL 326'

CALIBRATION AND SCALES

Track 1	Depth (Scale)	Track 2	Track 3
GAMMA	20'-1"	H.R. DENSITY	T.C.1 540
T.C.2 530		0-130 7,000-4,500	
0-150		130-325 8,500-6,000	
		325-T.D. 7,000-4,500	
		NEUTRON	T.C.1 540
		0-325 1,000-0	
		326-524 0-500	





Gamma, H R D and Neutron

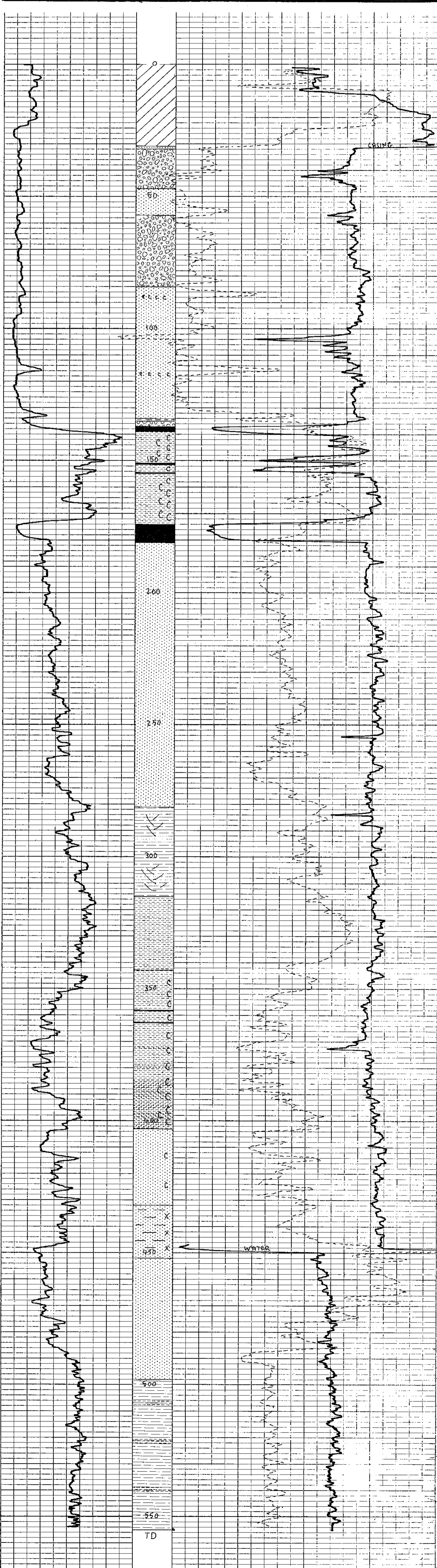
COMPANY Devison Mines Ltd
BOREHOLE WOLVERINE D71-21
STATE R.C. **COUNTRY** CANADA
Permanent Datum GROUND : Elev. Ft.
Log measured from Ft. above P.D.
Drilling measured from Ft. above P.D.
Run No. Depth Scale 20' - 1"
Date 27-11-72
First Reading
Last Reading
Interval Measured 30'
Casing BPH
Casing Driller
Depth Reached 554'
Bottom Driller 557'
Mud Nature
S.G. **Viscosity**
Bit Size 1 HQ **to** **to**
2 **to** **to**
Casing Size
Operating Time
Truck No. 5
Recorded By H Youwig
Witness

HOLE DATA	TOOL DATA	PANEL DATA
Customer <u>DEVISON MINES</u>	Sonde # <u>4</u> # <u>18</u>	Source type
Contractor <u>LONGYEAR</u>	Normaliser	Source strength
Date Logged <u>27/11/72</u>	Logging speed	
Date Drilled	Time constant	
Borehole <u>WOLVERINE D71-21</u>	Spacing	

COMMENTS
 WATER LEVEL 447'

CALIBRATION AND SCALES

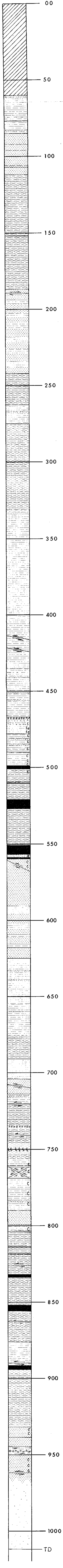
Track 1	Depth (Scale)	Track 2	Track 3
<u>GAMMA</u>		<u>H.R. DENSITY</u>	<u>T.C.1 840</u>
<u>T.C.2 830</u>		<u>0-30' 7,500 - 5,000</u>	
<u>0 - 150</u>	<u>20' - 1"</u>	<u>30'-447' 8,500 - 6,000</u>	
		<u>447'-TD 7,000 - 4,500</u>	
		<u>NEUTRON</u>	<u>T.C.1 840</u>
		<u>0-447' 1000 - 0</u>	
		<u>447'-TD 0 - 300</u>	



QWD 71-12
LITHOLOGIC LOG 1" = 20'

597

RE-QUINLETTE 71(3)A2



QUINTETTE PROJECT

PHASE I

SUMMARY REPORT OF

DRILL RESULTS

MAY 1971

D.M. Parkes, P. Eng.

Coal Licences 1300 to 1427 inclusive

Coal Licences 1887 to 1907 inclusive

GEOLOGICAL BRANCH
ASSESSMENT REPORT

00 597

The Summary Report of Drill Results contains confidential information or data, as described in Section 2 of the *Coal Act Regulation*, and has been excluded from this report.

Coal Act Regulation: http://www.gp.gov.bc.ca/statreg/reg/C/251_2004.htm