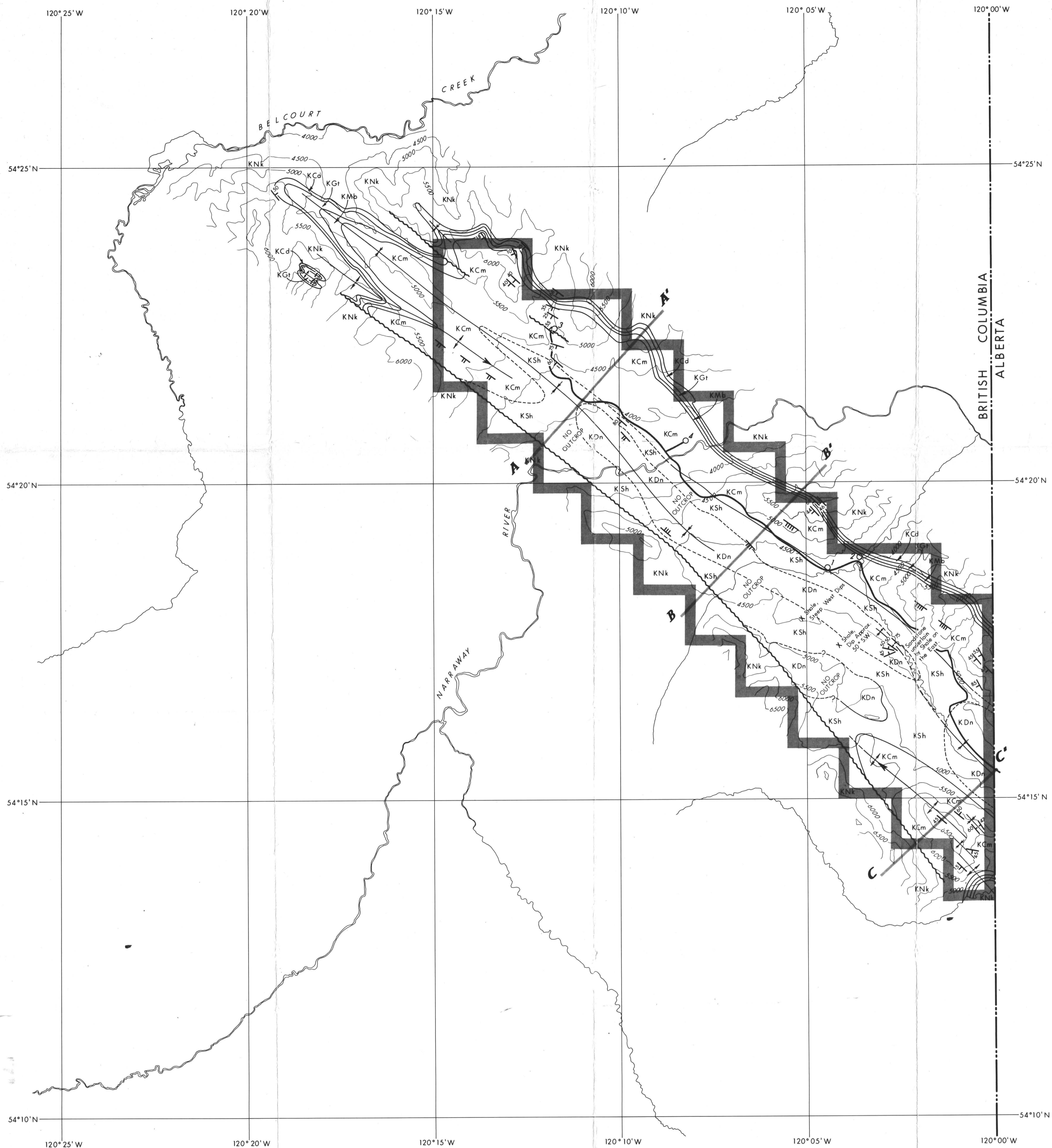


PR-SAXON - 71(2) A

1/6

GENEALOGICAL BRANCH
ASSESSMENT REPORT

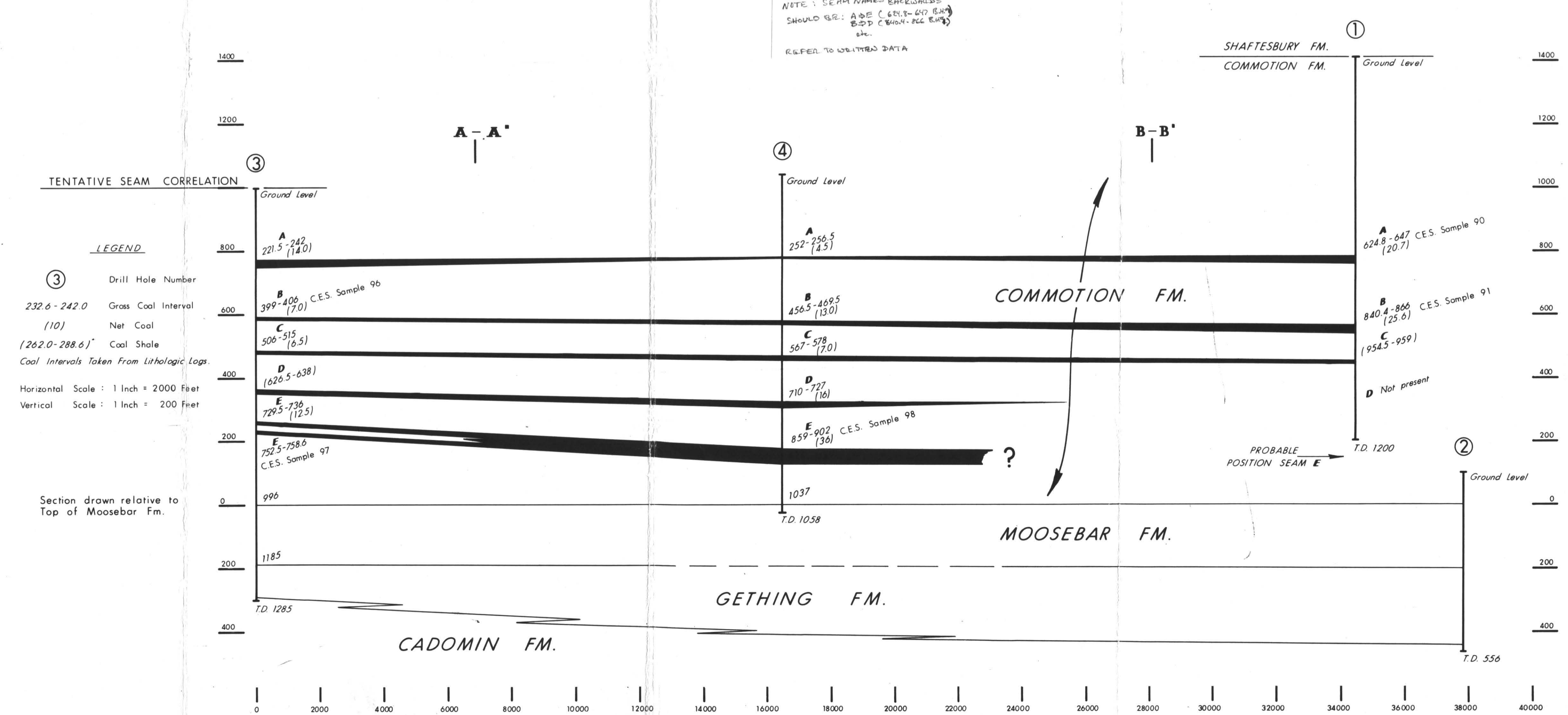
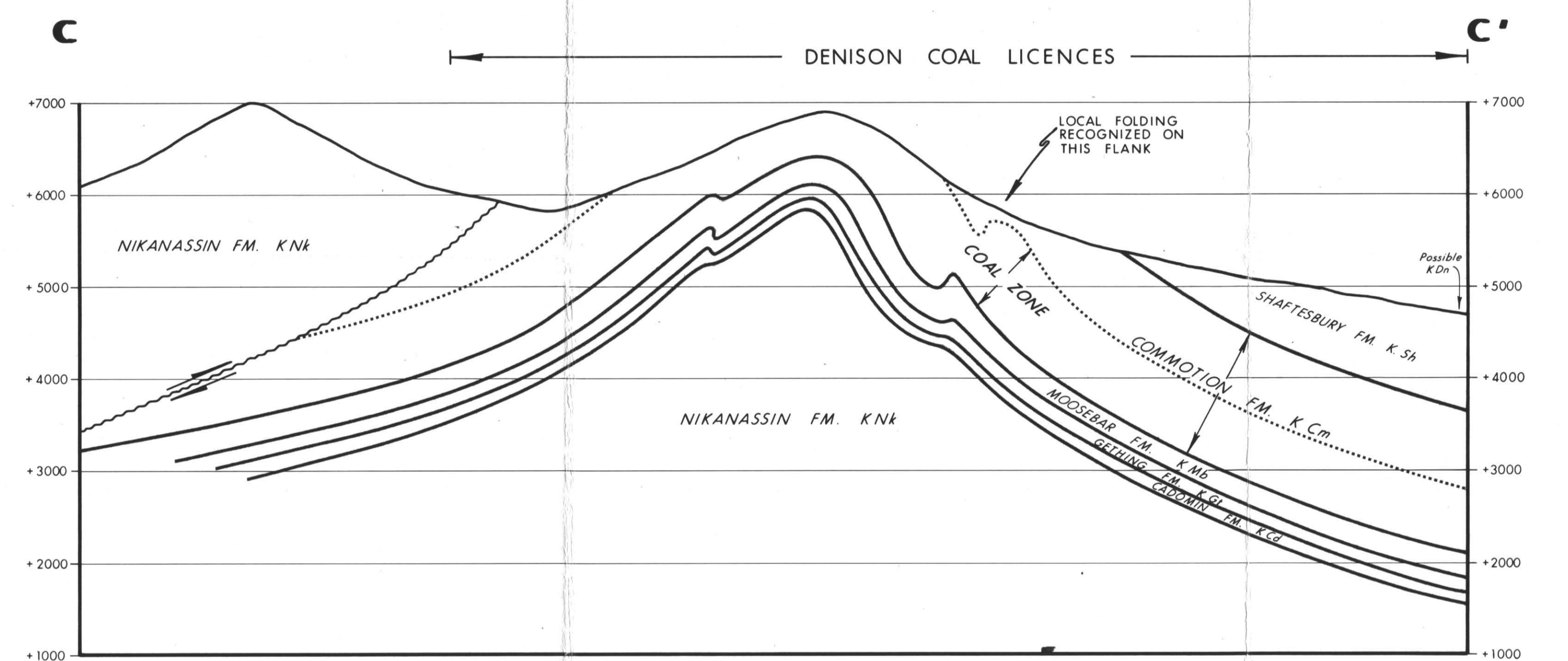
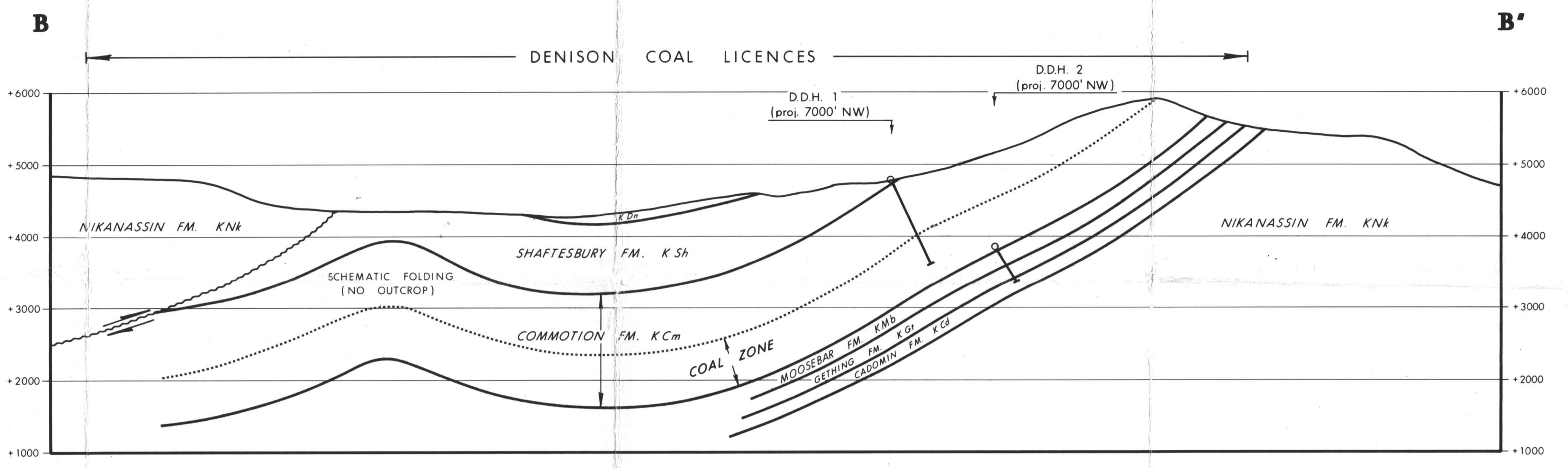
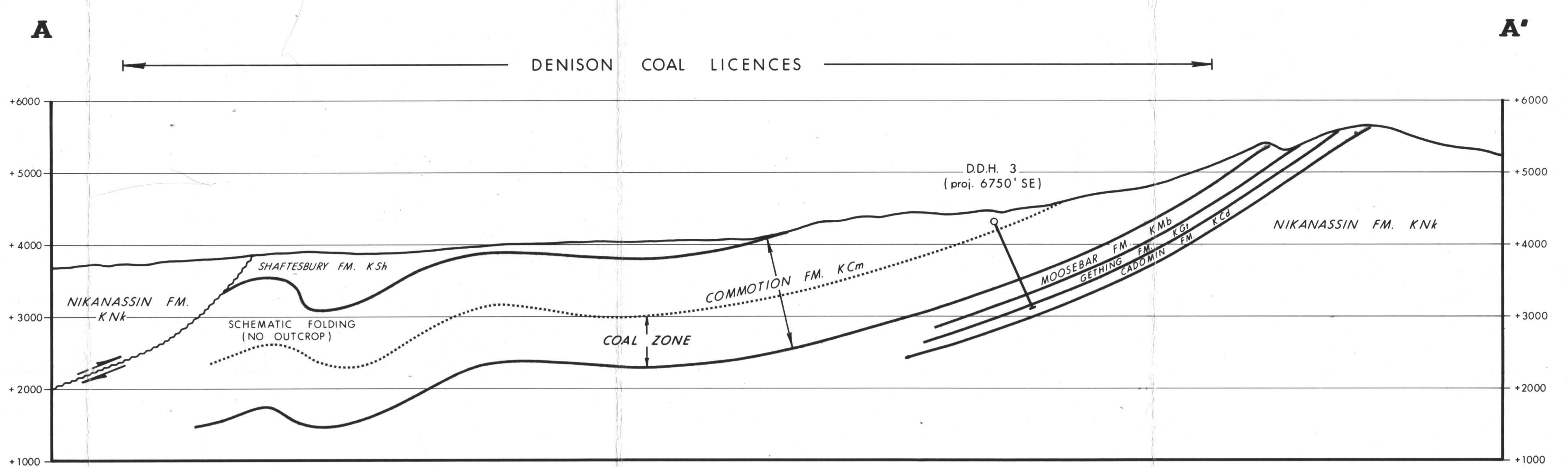
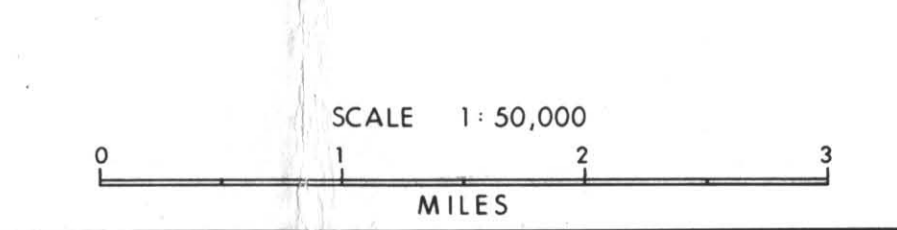
00 622



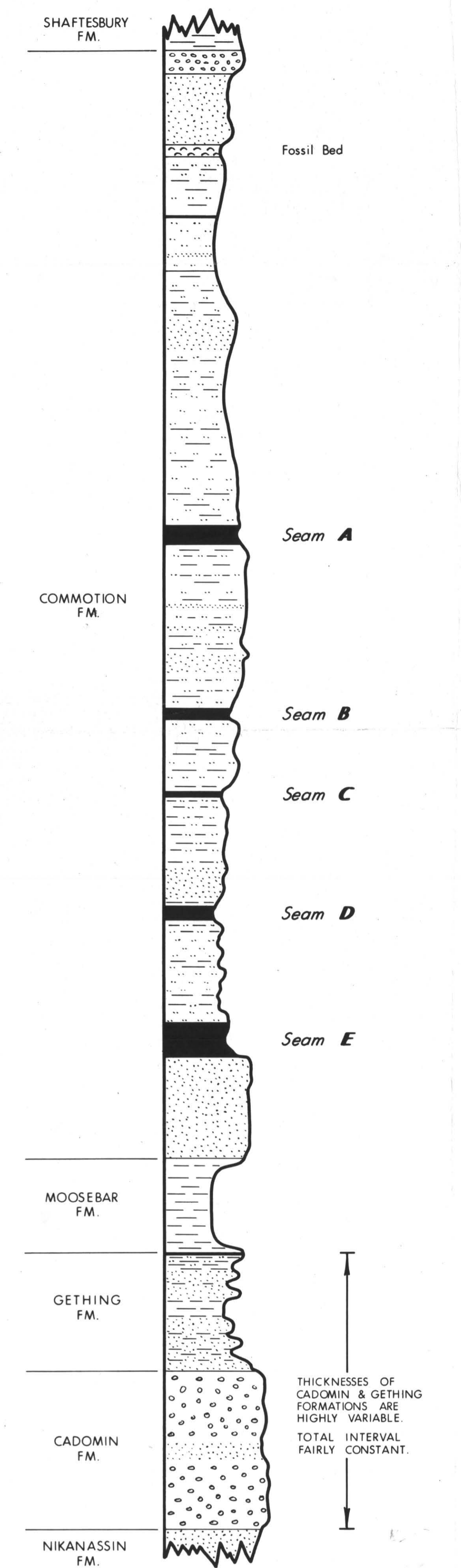
- GEOLOGICAL LEGEND**
CRETACEOUS
- KDn Dunvegan Formation
 - KSh Shaftesbury Formation
 - KCM Commotion Formation
 - KMb Moosebar Formation
 - KGI Gething Formation
 - KCa Cadomin Formation
 - KNk Nikanassin Formation

- Outline Of Licences Held By DENISON MINES LIMITED
- Approximate Route Of Access Road
- Drill Hole

DENISON MINES LIMITED
CALGARY, ALBERTA
BRITISH COLUMBIA FOOTHILLS
SAXON PROJECT
GEOLOGY



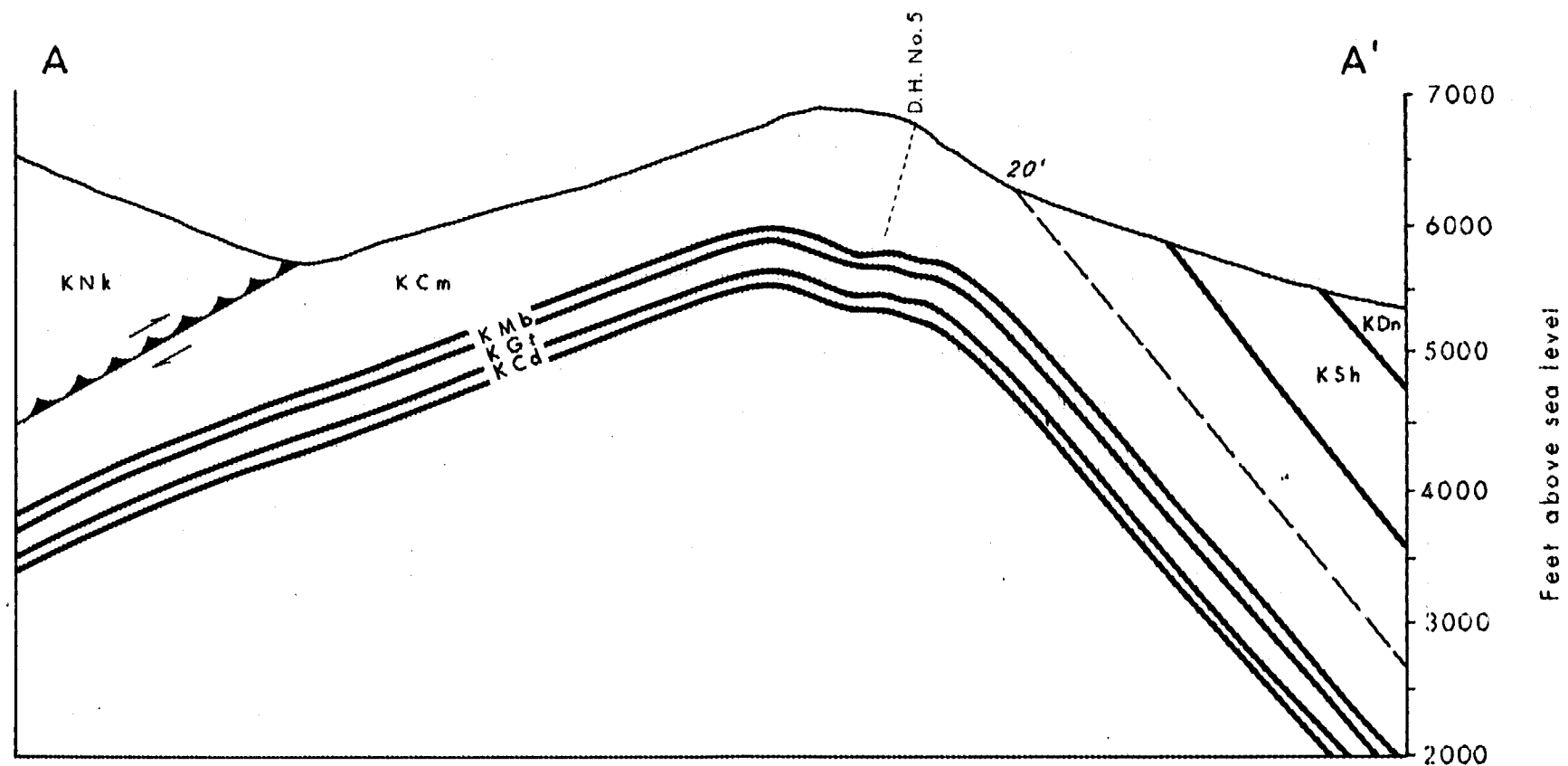
TYPICAL STRATIGRAPHIC SECTION OF COAL MEASURES
SCALE: 1 Inch = 100 Feet



- Siltstone
- Coal
- Mudstone
- Conglomerate
- Shale
- Sandstone

PR-SX 71(2)A

DENISON MINES LIMITED
CALGARY, ALBERTA
BRITISH COLUMBIA FOOTHILLS
SAXON PROJECT
March 3, 1971
622
PAUL DYSON CONSULTANTS & HOLDINGS LTD.

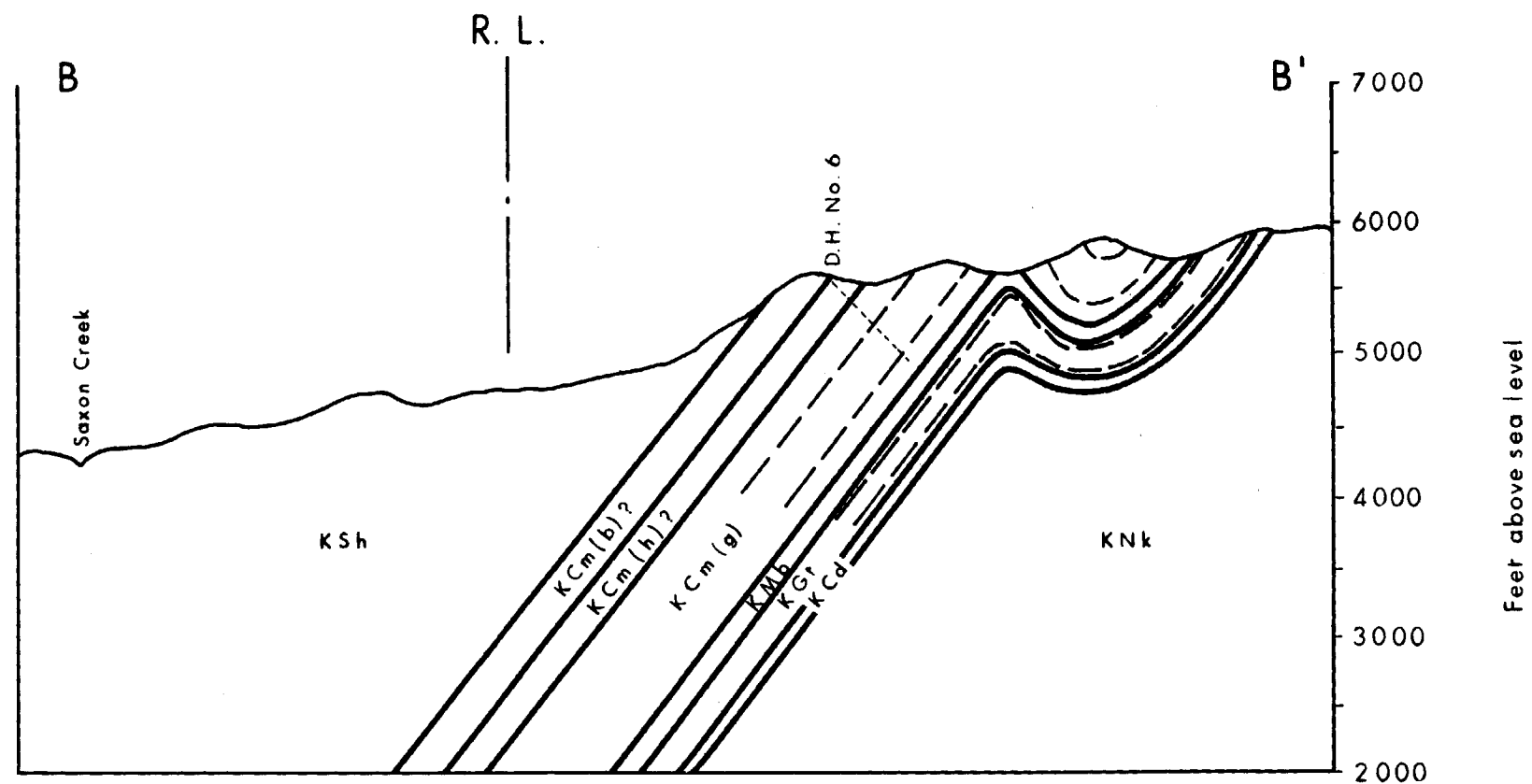


622 1/2

No evidence for separate Hullcross and Boulder Creek boundaries found in field.

- KSh SHAFTESBURY FORMATION
- KCm(b) COMMOTION FORMATION (Boulder Creek Member)
- KCm(h) COMMOTION FORMATION (Hullcross Member)
- KCm(g) COMMOTION FORMATION (Gates Member)
- KMb MOOSEBAR FORMATION
- KGt GETHING FORMATION
- KCd CADOMIN FORMATION
- KNk NIKANASSIN FORMATION

DENISON MINES LIMITED	
SAXON PROJECT	
Cross Section: A - A' ②	
BY : D. L. B.	DATE : Aug '71
SCALE : 1" = 1320'	SXON 71-0140-R02

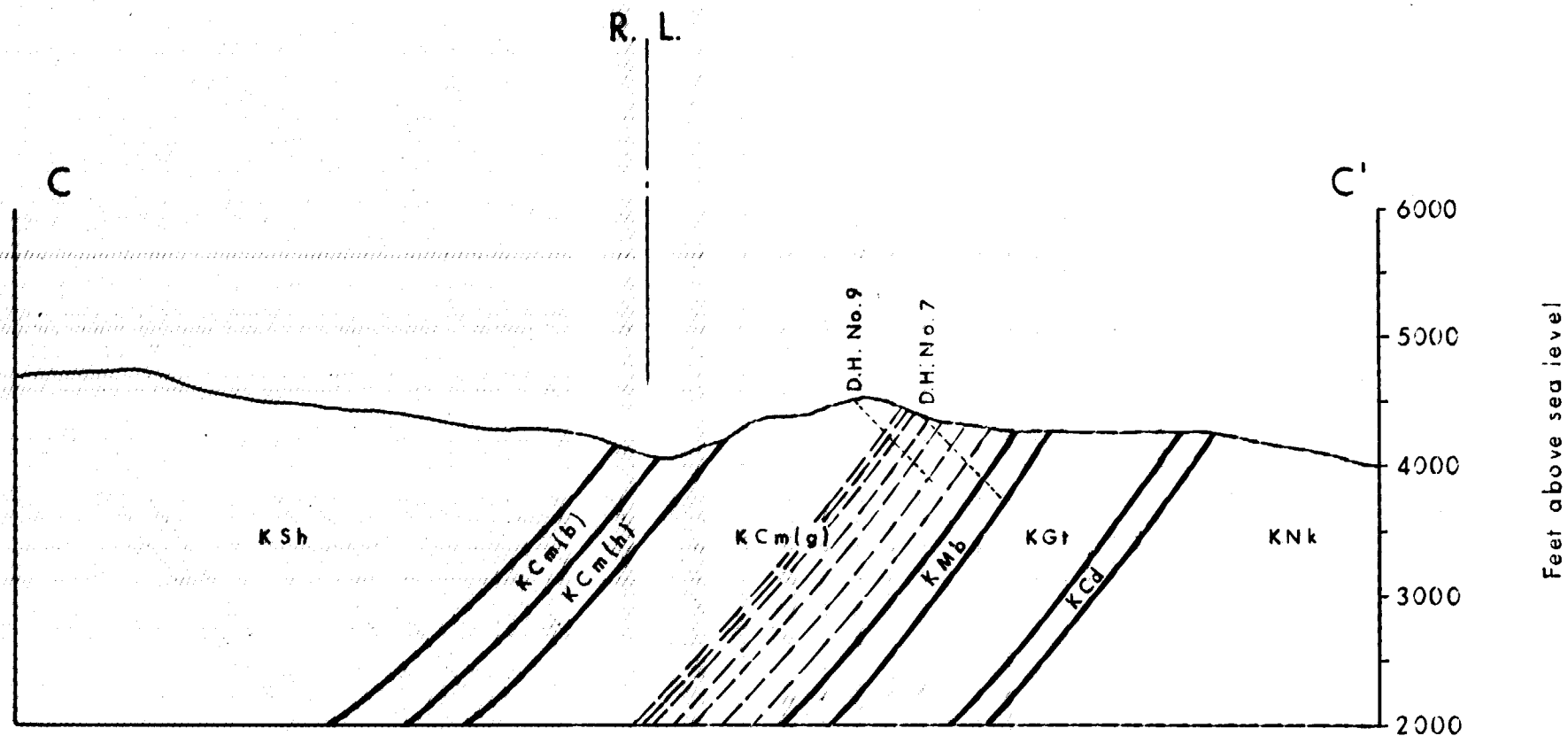


622

PR-50408 71 (2) A 1/6

- KSh SHAFTESBURY FORMATION
- KCm(b) COMMOTION FORMATION (Boulder Creek Member)
- KCm(h) COMMOTION FORMATION (Hullcross Member)
- KCm(g) COMMOTION FORMATION (Gates Member)
- KMb MOOSEBAR FORMATION
- KGf GETHING FORMATION
- KCd CADOMIN FORMATION
- KNk NIKANASSIN FORMATION

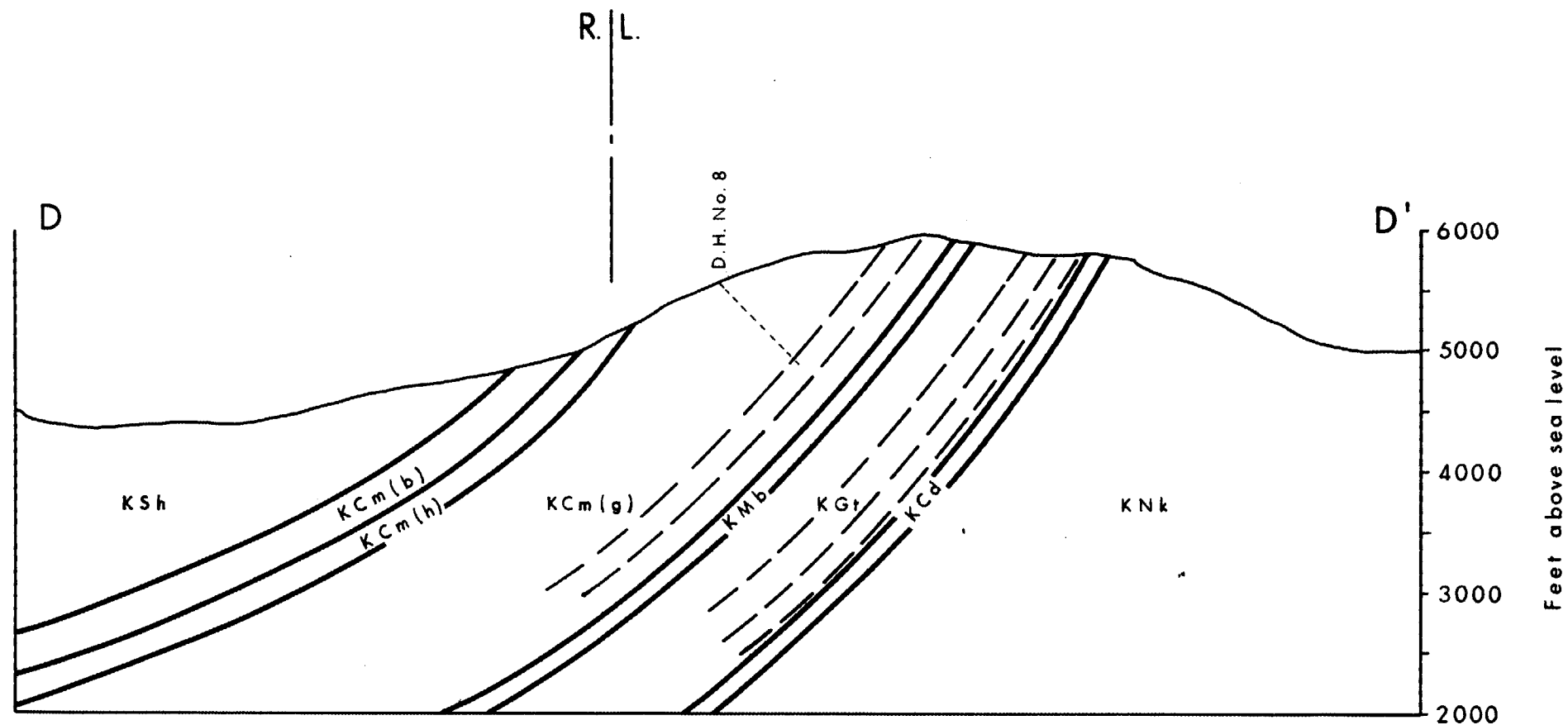
DENISON MINES LIMITED	
SAXON PROJECT Cross Section: B - B' (3)	
BY : W. K. S.	DATE : Aug. '71
SCALE : 1" = 1320'	SXON 71-0141-R02



622 1/6

- KSh SHAFTESBURY FORMATION
- Kcm(b) COMMOTION FORMATION (Boulder Creek Member)
- Kcm(h) COMMOTION FORMATION (Hullcross Member)
- Kcm(g) COMMOTION FORMATION (Gates Member)
- Kmb MOOSEBAR FORMATION
- KGr GETHING FORMATION
- Kcd CADOMIN FORMATION
- KNk NIKANASSIN FORMATION

DENISON MINES LIMITED	
<i>SAXON PROJECT</i> Cross Section: C-C' (4)	
BY : W. K. S.	DATE : Aug. '71
SCALE : 1" = 1320'	SXON 71-0142-R02



622

- KSh SHAFTESBURY FORMATION
- KCm(b) COMMOTION FORMATION (Boulder Creek Member)
- KCm(h) COMMOTION FORMATION (Hullcross Member)
- KCm(g) COMMOTION FORMATION (Gates Member)
- KMb MOOSEBAR FORMATION
- KGf GETHING FORMATION
- KCd CADOMIN FORMATION
- KNk NIKANASSIN FORMATION

PR - SAXON 71-21A 1/6

DENISON MINES LIMITED

SAXON PROJECT
 Cross Section: D-D' ⑤

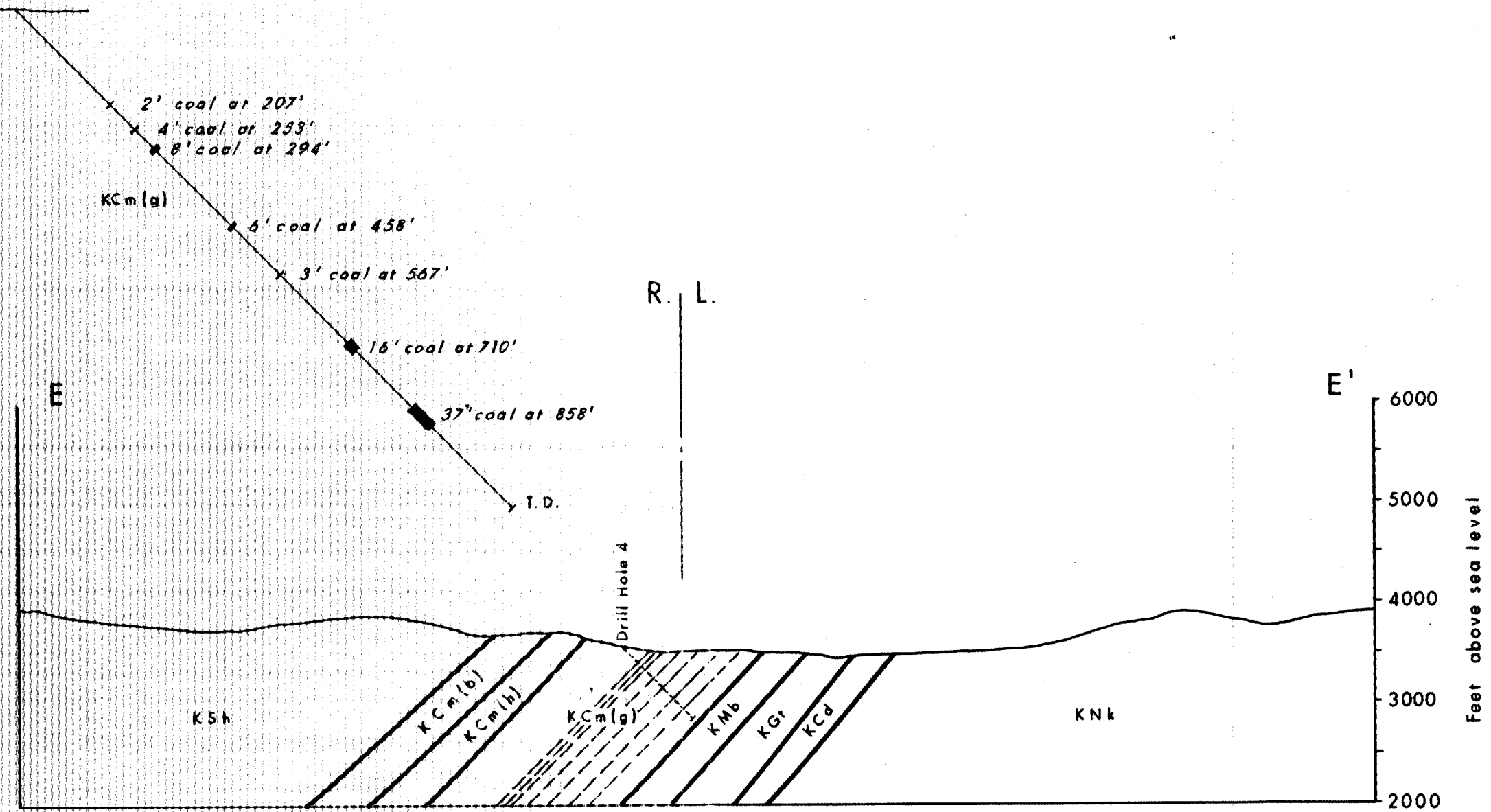
BY : W. K. S.

DATE : Aug. '71

SCALE : 1" = 1320'

SXON 71-0143-R02

DRILL HOLE 4
Scale 1"=200'

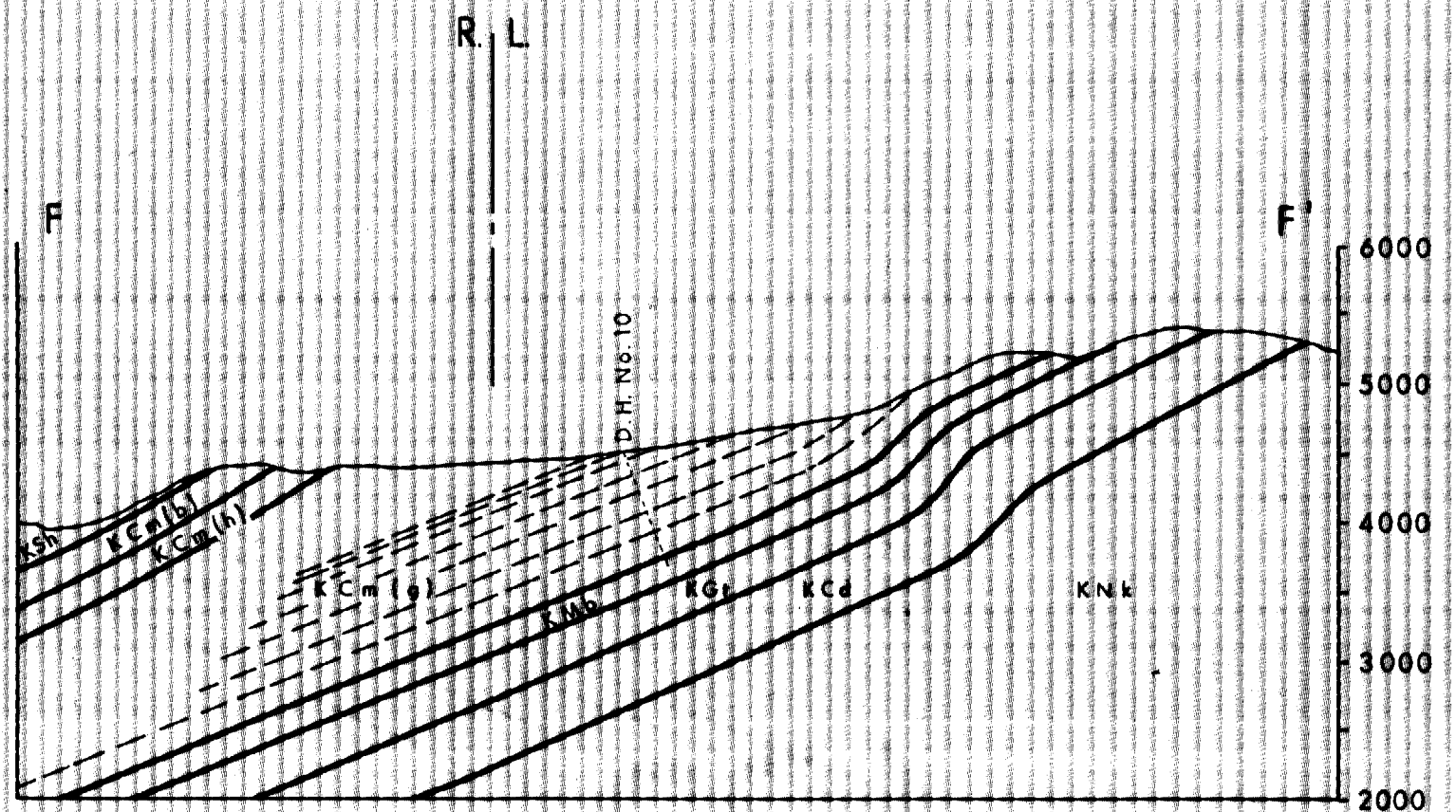


622

PR - SAXON 71(2)A 16

- KSh SHAFTESBURY FORMATION
- KCm(b) COMMOTION FORMATION (Boulder Creek Member)
- KCm(h) COMMOTION FORMATION (Hullcross Member)
- KCm(g) COMMOTION FORMATION (Gares Member)
- KMb MOOSEBAR FORMATION
- KGf GETHING FORMATION
- KCd CADOMIN FORMATION
- KNk NIKANASSIN FORMATION

DENISON MINES LIMITED	
SAXON PROJECT Cross Section: E - E' (6)	
BY : W. K. S.	DATE : Aug. '71
SCALE : 1" = 1320'	SXON 71-0144 - R01



- KSh SHAFTESBURY FORMATION
- KCm(b) COMMOTION FORMATION (Boulder Creek Member)
- KCm(h) COMMOTION FORMATION (Hullcross Member)
- KCm(g) COMMOTION FORMATION (Gates Member)
- KMb MOOSEBAR FORMATION
- KGt GETHING FORMATION
- KCd CADOMIN FORMATION
- KNk NIKANASSIN FORMATION

DENISON MINES LIMITED

SAXON PROJECT
Cross Section: F-F' ①

BY : W. K. S.

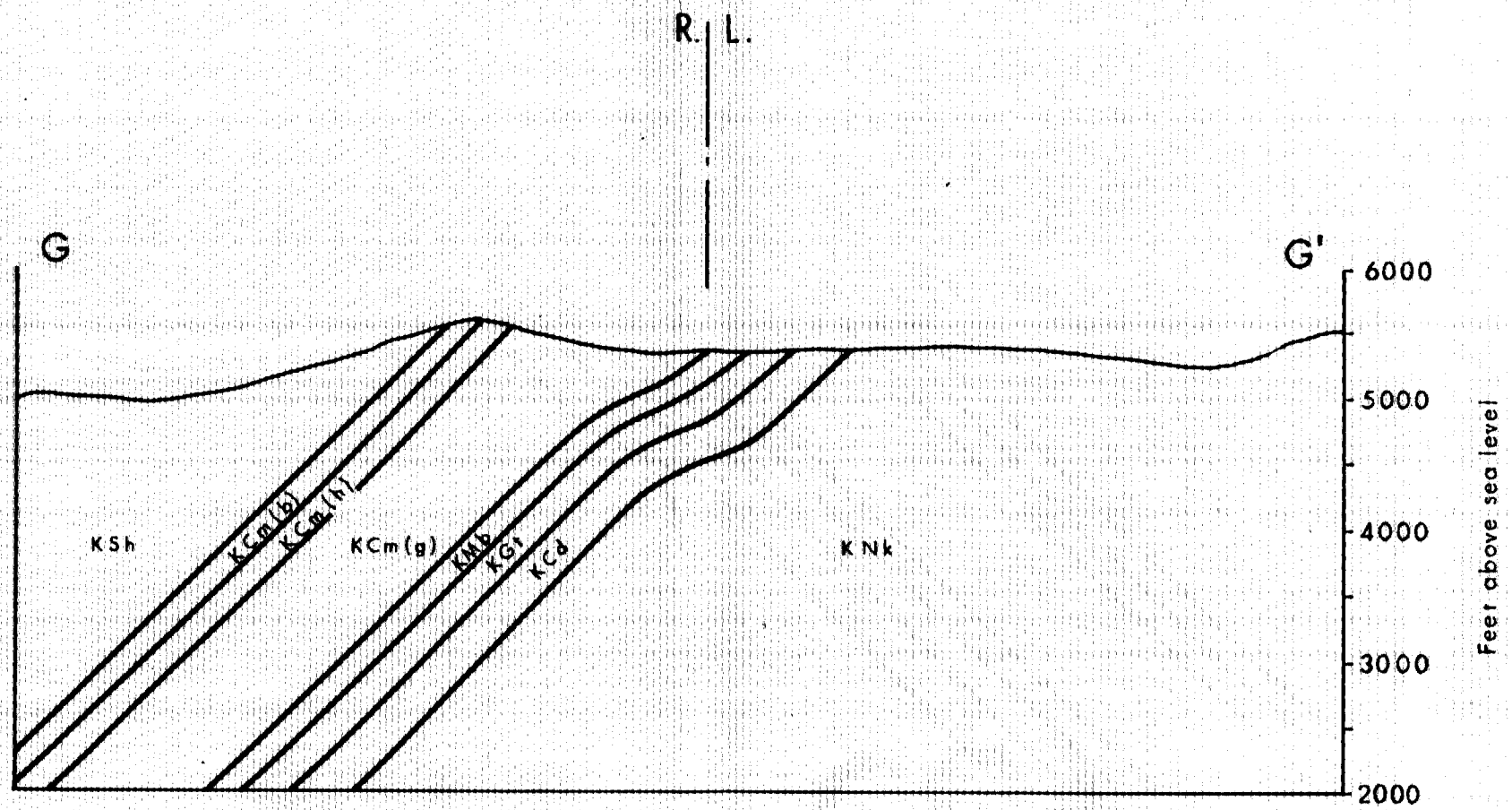
DATE : Aug. '71

SCALE : 1" = 1320'

SXON 71-0145-R02

PR-SAXON 91(2)A. 1/6

622



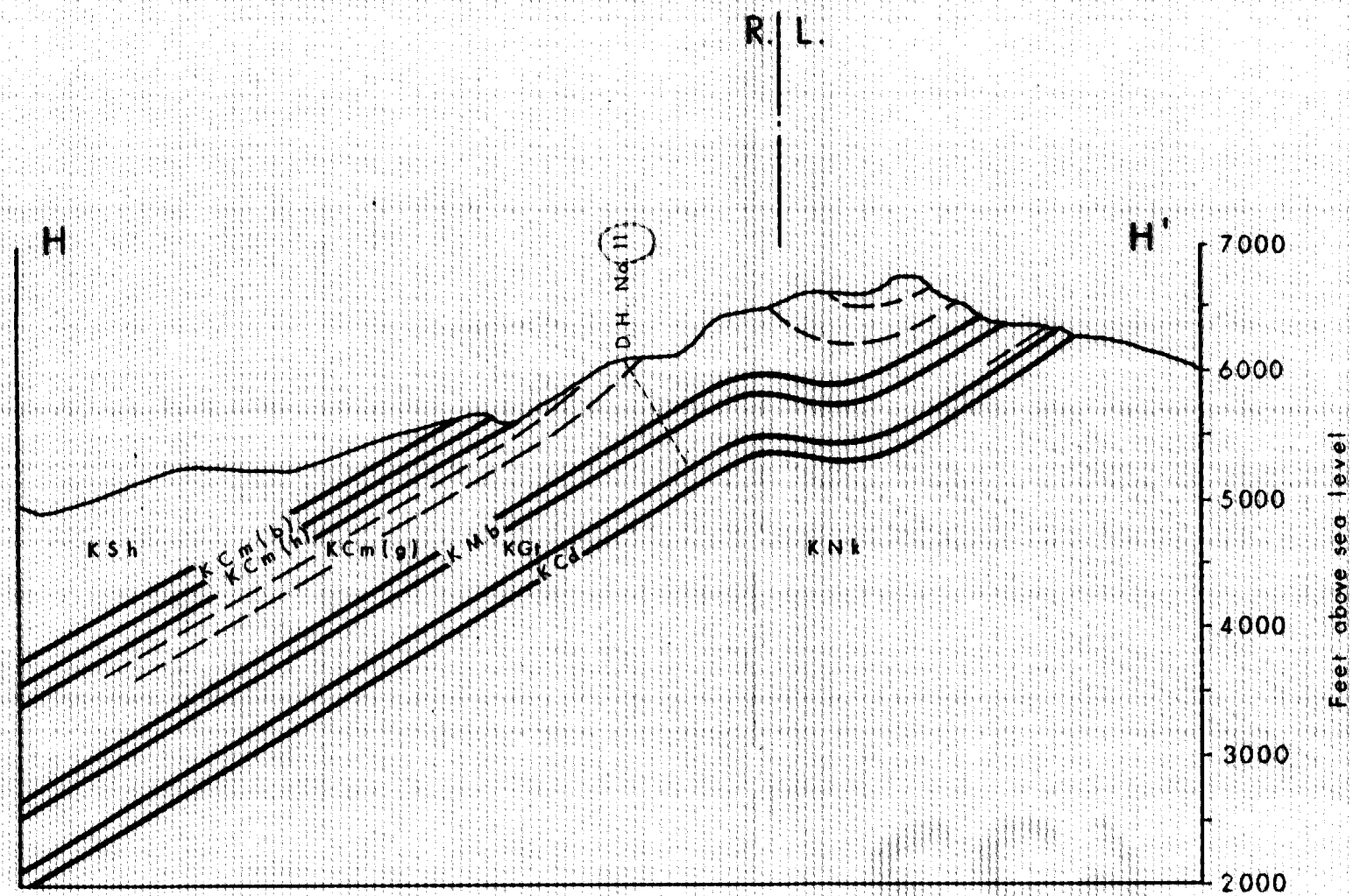
622 1/6

- KSh SHAFTESBURY FORMATION
- KCm(b) COMMOTION FORMATION (Boulder Creek Member)
- KCm(h) COMMOTION FORMATION (Hullcross Member)
- KCm(g) COMMOTION FORMATION (Gates Member)
- KMb MOOSEBAR FORMATION
- KGt GETHING FORMATION
- KCd CADOMIN FORMATION
- KNk NIKANASSIN FORMATION

DENISON MINES LIMITED

SAXON PROJECT
 Cross Section: G - G' (4)

BY : W. K. S.	DATE : Aug. '71
SCALE : 1" = 1320'	SXON 71-0146 - R01



622

PR-SAXON 71(2)A 1/6

DENISON MINES LIMITED

SAXON PROJECT

Cross Section: H - H' ⑨

- Ksh SHAFTESBURY FORMATION
- KCm(b) COMMOTION FORMATION (Boulder Creek Member)
- KCm(h) COMMOTION FORMATION (Hullcross Member)
- KCm(g) COMMOTION FORMATION (Gates Member)
- KMb MOOSEBAR FORMATION
- KGr GETHING FORMATION
- KCd CADOMIN FORMATION
- KNk NIKANASSIN FORMATION

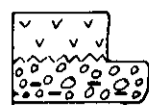
BY : W. K. S.

DATE : Aug. '71

SCALE : 1" = 1320'

SXON 71-0147 - R02

SDH No. 1



OVERBURDEN
 CONGLOMERATE: VERY FINE PEBBLES, SOME COAL FRAGMENTS IN MATRIX, DISTINCTLY SANDY BOTTOMWARD

FINE / MEDIUM SANDSTONE, LAMINATED
 DISTINCTLY ARGILLICEOUS IN BOTTOM SEQUENCE.

GASTROPODAL BIOMICRITE (CLAYEY) 14" THICK
 2.5' COAL SEAM: CLEAN SOLID COAL, BOTTOM HALF FRIABLE

1.0' SOLID BRIGHT COAL
 MUDSTONES, SILTY
 A CORAL COLONY

2.5' COAL SEAM

MUDSTONES WITH SUBORDINATE SILTSTONES
 ABRUPT INTRAFORMATIONAL CONTACTS

1.0' BRIGHT CLEAN COAL

1.0' SHALY COAL
 1.0' FRIABLE COAL

CLEAN, WELL SORTED, FINE GRAINED SANDSTONE,
 SHALY INTRACLASTS BOTTOMWARD.

0.5' BRIGHT COAL

1.5' BRIGHT COAL WITH SOME SHALE

1.0' SHALY COAL
 1.5' CLEAN BRIGHT COAL
 1.0' COAL SEAM
 13.5' COAL SEAM (BRIGHT FRIABLE COAL)

1.5' SHALY COAL

SANDSTONE, MEDIUM GRAINED
WELL SORTED & WASH CROSS-BEDDED

SANDSTONE, FINE-MEDIUM GRAINED, DARK INTRACLASTS
 26' COAL SEAM: ALL COAL BRIGHT FRIABLE
 TYPE INITIAL 4' BONY COAL.

MEDIUM / COARSE - GRAINED SST, STRONGLY CROSS-BEDDED
SOME CALCITE VEINING IN LOWER HALF

1.5' COAL SEAM

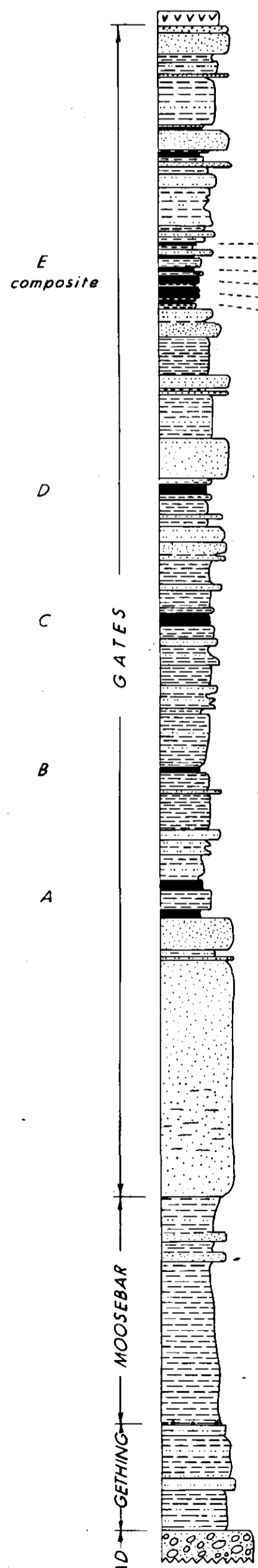
ARGILLACEOUS SILTSTONES, INTRICATE FINE LAMINATION

MEDIUM - GRAINED SSTS, CLEAN, WELL LAMINATED
VERTICAL CALCITE VEINS, SOME GRADATIONAL INTERVALS

BLACK MUDSTONE & SHALES, INTRICATE LAMINATION
BADLY FRACTURED, CALCITE VEINING AND
SOME BRACCEATION.

HOLE ABANDONED DUE TO MECHANICAL DIFFICULTIES

SDH No. 3



1.5' BRIGHT FRIABLE COAL
 3.0' COAL SEAM

2.0' COAL SEAM
 2.5' COAL SEAM (SOLID COAL)
 2.2' COAL SEAM
 4.5' COAL SEAM (SOLID COAL)
 9.7' COAL SEAM
 2.5' COAL SEAM

7.0' COAL SEAM

FINE / MEDIUM SSTS SHALY
INTERCLASTS BOTTOMWARD

9.0' COAL SEAM

MUDSTONES WITH OCCASIONAL
 SILTS, SOME COAL (DISPERSED)
 4.0' COAL & CARBONACEOUS SHALES

6.5' COAL SEAM

6.0' COAL SEAM
 MEDIUM - GRAINED SSTS, 1.5' INTERVAL THOROUGHLY
 PUNCTURED BY BURROWS.
 FINE GRAINED MUDDY SST + FINE PEBBLES & GRITS

FINE - GRAINED SSTS, CLEAN AND WELL SORTED,
 FEW MUDDY INTRACLASTS BOTTOMWARD
 CRISS - CROSSING BY CALCITE VEINS
 PRESUMABLY BASAL MARINE GATES
 SANDSTONES.

MEDIUM - GREY MARINE SHALES,
FINE GRAINED SANDY INTERVALS.

THIN BENTONITE LAYERS IN
BOTTOM 5 FEET.

0.5' CONGLOMERATE DEFINING BASE OF MOOSEBAR

GETHING SEQUENCE IS VERY THIN NON-COAL
BEARING, ESSENTIALLY MUDSTONES AND
SILTY MUDSTONES.

5' shaly coal 5' mbs ...

Glennville
 118 & 119-1195
 Beantown
 11170-1195

PR-SX 71(2)A

DENISON MINES LIMITED
 (COAL DIVISION)
 CALGARY ALBERTA

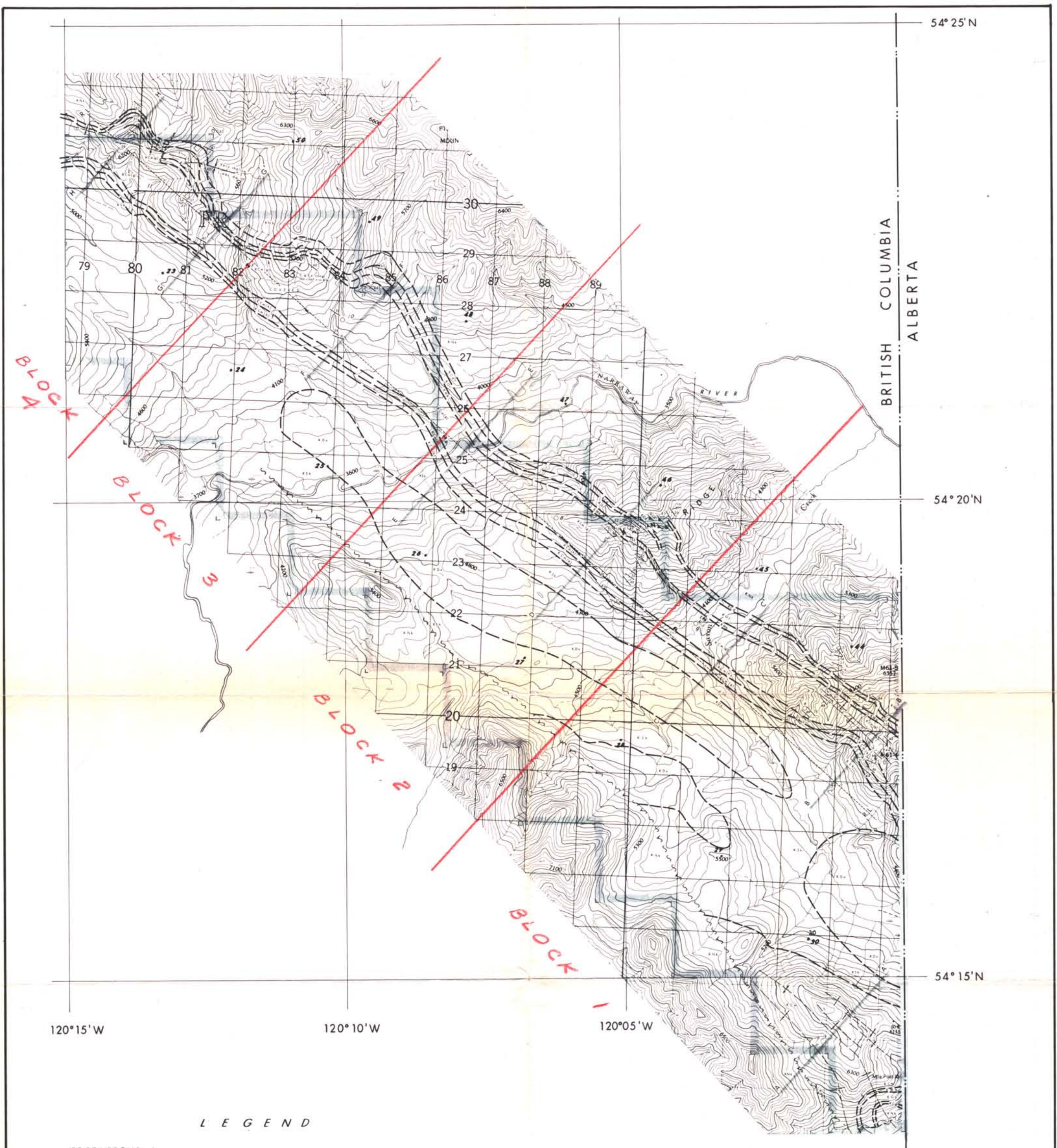


SAXON
 STRATIGRAPHIC SECTIONS

(10)

622 1/6

DRAWN BY: EToth	DATE: SEPT '71	SCALE: 1" = 100'
APPROVED BY:	DRAWING No: SXON 71 - 0193 - R01	



L E G E N D

CRETACEOUS

- | | | | |
|---------------|--|-----|---------------------|
| KSh | Shaftesbury formation | ● | Existing drillhole |
| KCb(b) | Compton formation (Boulder Creek member) | ○ | Proposed drillhole |
| KCb(h) | Compton formation (Hullcross member) | — | Road or trail |
| KCb(g) | Compton formation (Gates member) | 30° | Dip & strike |
| KMs | Moosebar formation | ~ | Faults |
| Kor | Gething formation | + | Syncline |
| Kca | Cadomin formation | + | Anticline |
| KNs | Nikanassin formation | — | Cross-section lines |
| KDn | Dunvegan formation | ■ | Denison's property |

PR-SAXON 71(2)A

DENISON MINES LIMITED (COAL DIVISION)		
CALGARY	ALBERTA	
SAXON GEOLOGY		
(11)		
Drawn by: A.M.	Date: SEPT '71	Scale: 1:50,000
Approved by:	Drawing No. SXON 71 - 0151 - R02	

622 1/6