

MAPS NOT ENCLOSED AND TO BE SUPPLIED

GEOLOGICAL COMPILATION MAP 1:25 000

" " " 1:50 000

SAXON WEST STRUCTURE CONTOUR MAPS ✓

SAXON SOUTH RESERVE MAPS

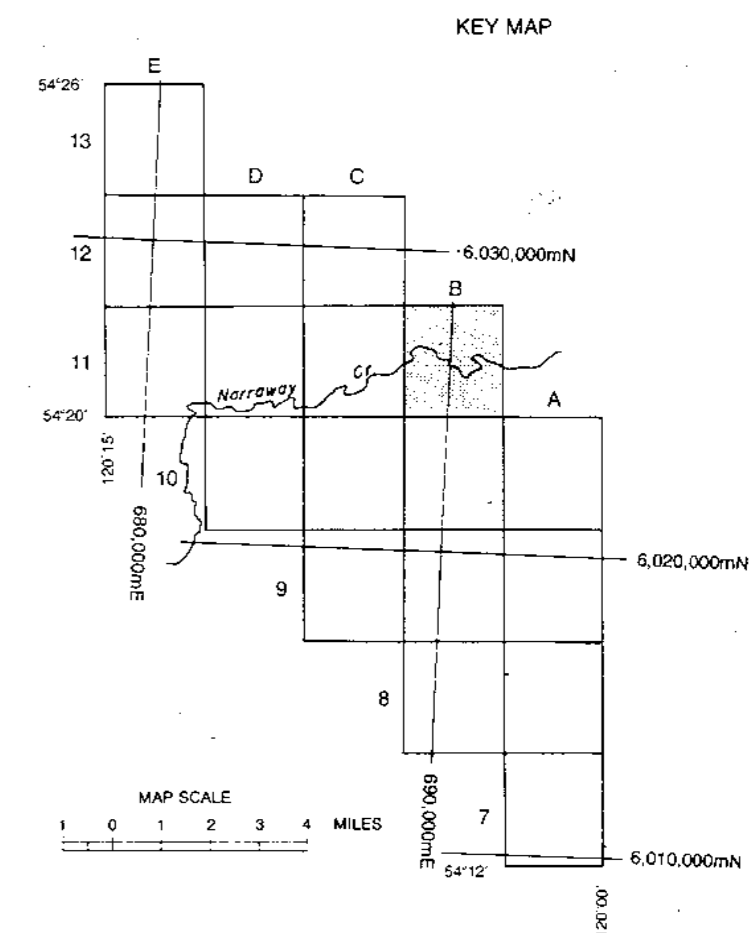
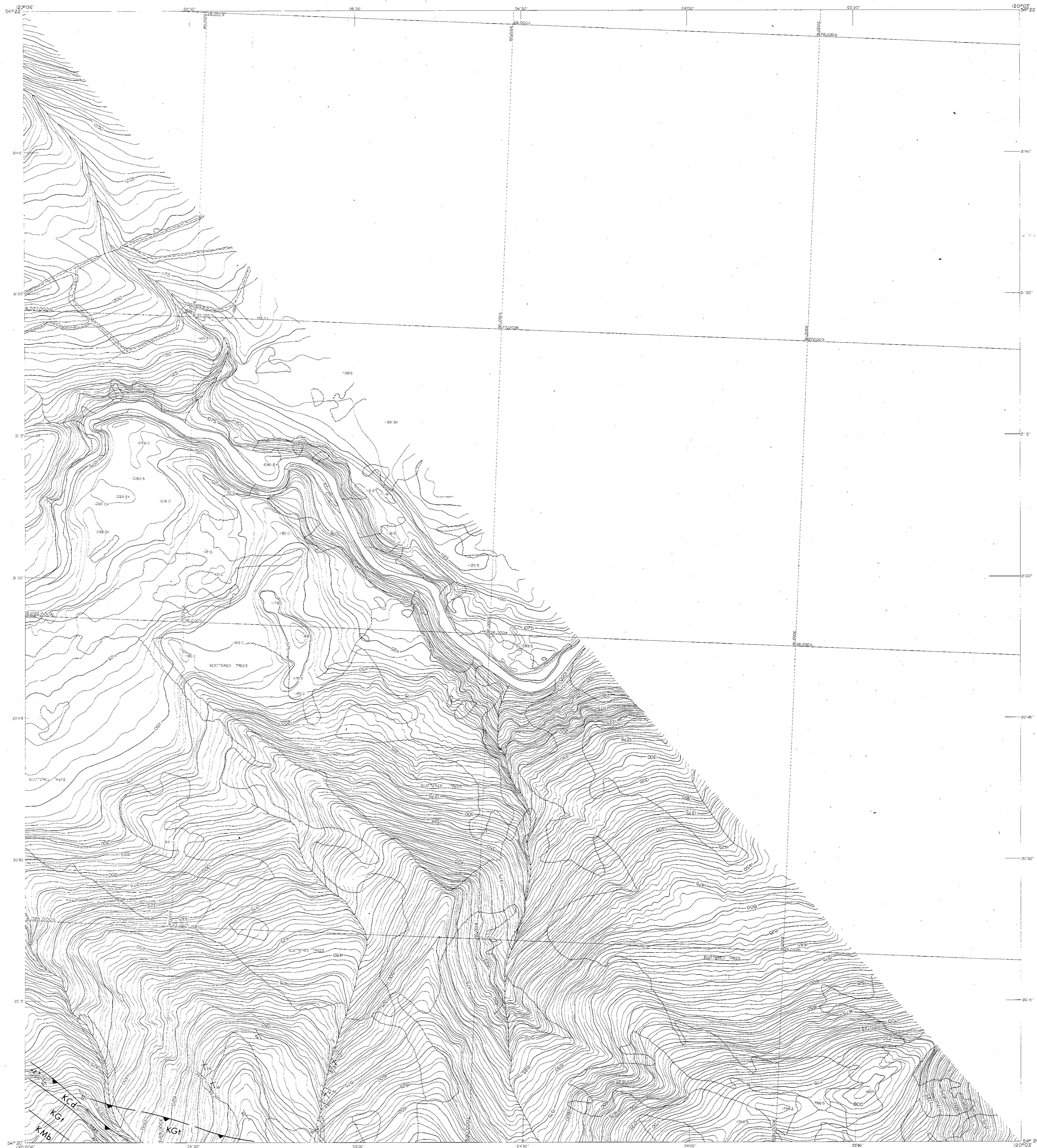
SAXON EAST " "

SAXON WEST " "

627

PR-SAXON-76(2)A-1

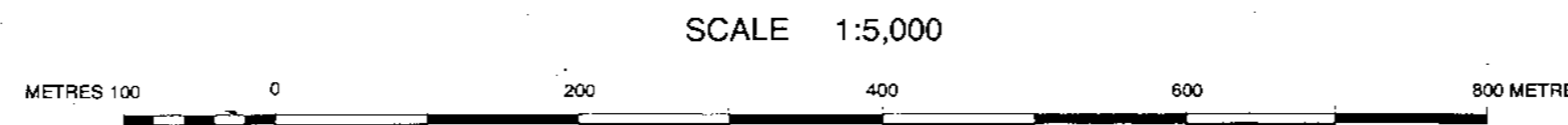
MAPS



LEGEND

Improved road	River
Secondary road	Stream
Track or trail	Intermittent stream
Railway	Swamp
Fence	Contours
Wall	Horizontal control
Cut line	Vertical control
Tree area	Spot elevation
Tree line	Photo point

DIP & STRIKE	1:36
ANTICLINE
SYNCLINE
FAULT
COAL SEAM



CONTOUR INTERVAL 5 METRES
 DATE OF PHOTOGRAPHY: SEPT. 6, 1975
 DATE OF MAPPING: MAY 19, 1976

COMPILED BY
burnett resource surveying Ltd.
ENGINEERS AND PHOTOGRAMMETRISTS SURVEYORS

K S ¹	SHAFTESBURY FORMATION
K C ¹ (b)	COMMOTION FORMATION (Boulder Creek Member)
K C ¹ (c)	COMMOTION FORMATION (Hulkness Member)
K C ¹ (d)	COMMOTION FORMATION (Gales Member)
K M ¹	MOOSEBAR FORMATION
K G ¹	GETHING FORMATION
K C ²	CADAMIN FORMATION
K N ¹	NIKANASSIN FORMATION

SURVEY NOTE

The Horizontal and Vertical Co-ordinates were established by Burnett Resource Surveying Ltd. (Vancouver, B.C.) under the supervision of D.H. Burnett, P.Eng., B.C.L.S., using MRA3 Tellurometers and DKM2A Theodolites. Horizontal Co-ordinates are derived from Trig. Station Mt. Gorman (2379) Lat. 54° 16' 43.715" Long. 120° 00' 07.218" which is within the same trig. network as Gimletie E. (2374) Lat. 54° 51' 30.330" Long. 120° 52' 38.210". Elevations are above Mean Sea Level and derived from Trig. Station Mt. Gorman, elev. = 2380.2m and where established by trig. leveling, vertical angles being read at both ends of each course simultaneously. The Field Survey was made between September 5 and September 30, 1975.

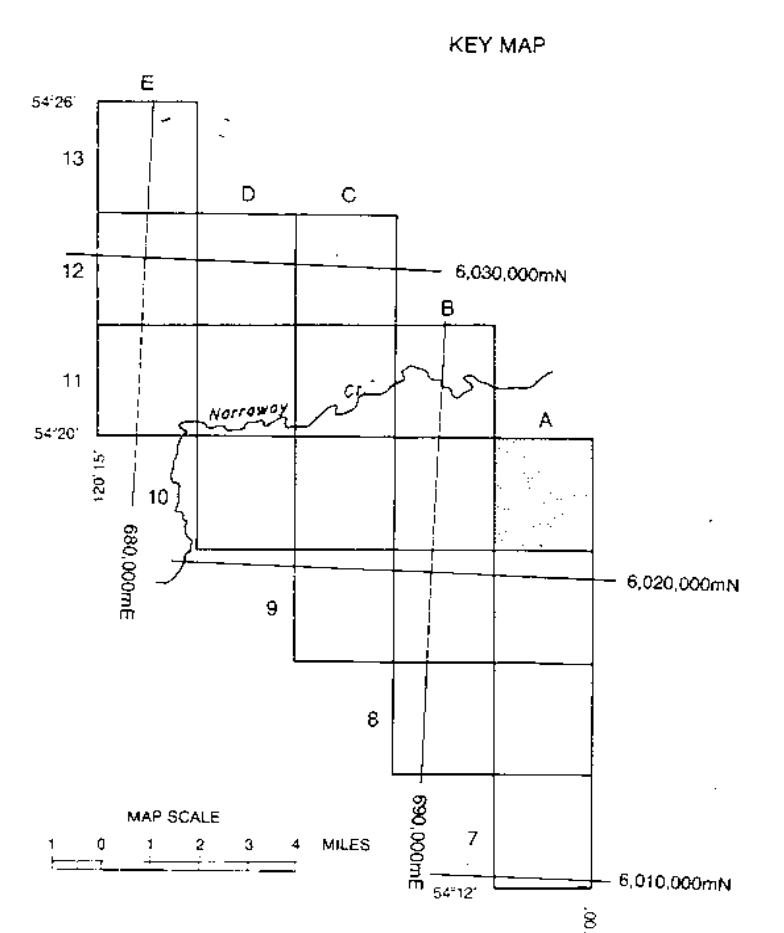
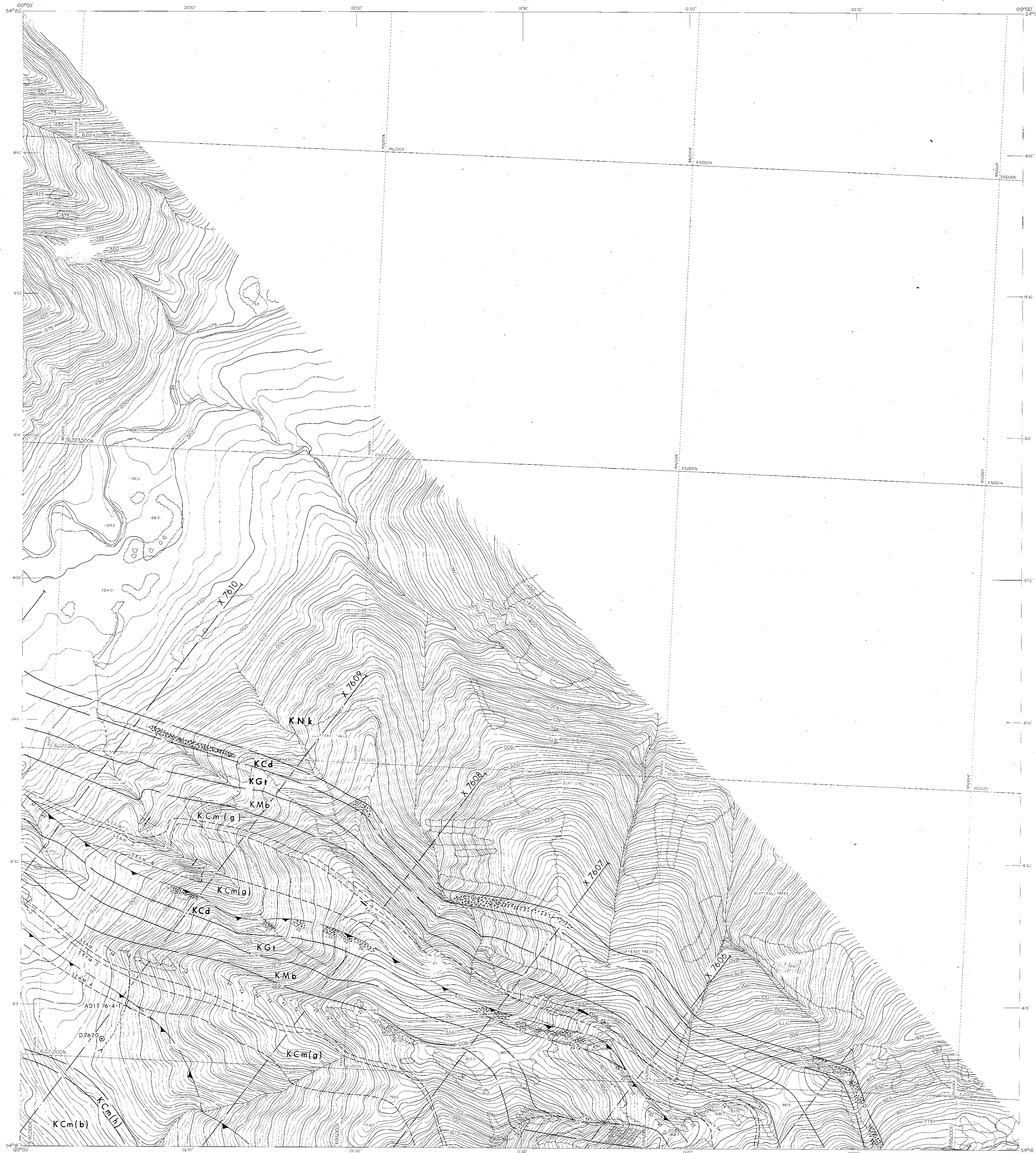
PE-5011N 76(2)A

DENISON COAL LIMITED
 (COAL DIVISION)
 CALGARY ALBERTA

SAXON COAL LTD.
 SAXON EAST
 DETAIL GEOLOGY

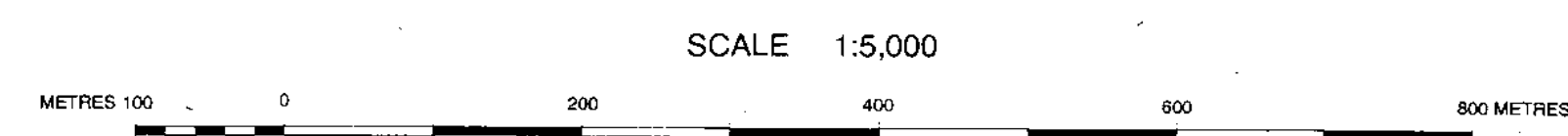
B-11

DRAWN BY:	DATE: MAY 26, 1976	SCALE: 1:5,000
APPROVED BY:	DRAWING NO: Saxon 76-0706-R-01	
PREPARED BY:	DATE:	



LEGEND

- | | | | | | |
|----------------|-------|---------------------|-------|--------------|----------|
| Improved road | | River | ~~~~~ | DIP & STRIKE | 35 |
| Secondary road | | Stream | ~~~~~ | ANTICLINE | |
| Track or trail | | Intermittent stream | ~~~~~ | SYNCLINE | |
| Railway | | Swamp | ~~~~~ | FAULT | |
| Fence | | Contours | | COAL SEAM | |
| Wall | | Horizontal control | | | |
| Cut line | | Vertical control | | | |
| Tree area | | Spot elevation | | | |
| Tree line | | Photo point | | | |



CONTOUR INTERVAL - 5 METRES
 DATE OF PHOTOGRAPHY - SEPT. 6, 1975
 DATE OF MAPPING - MAY 19, 1976

COMPILED BY
burnett resource surveys Ltd.
MEMBERS OF THE PROFESSION OF SURVEYORS

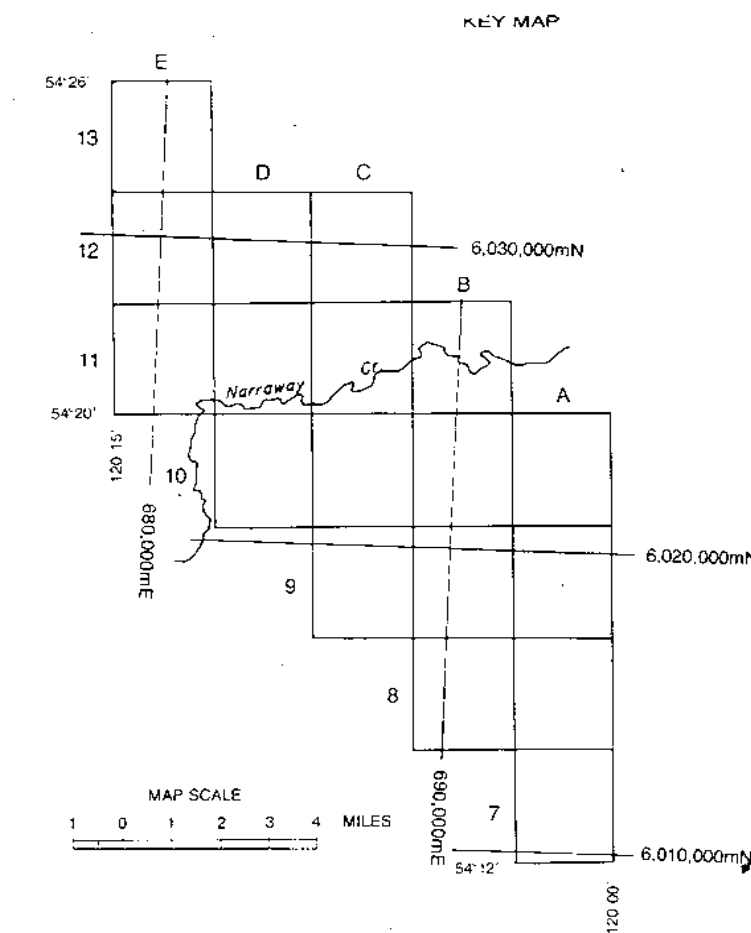
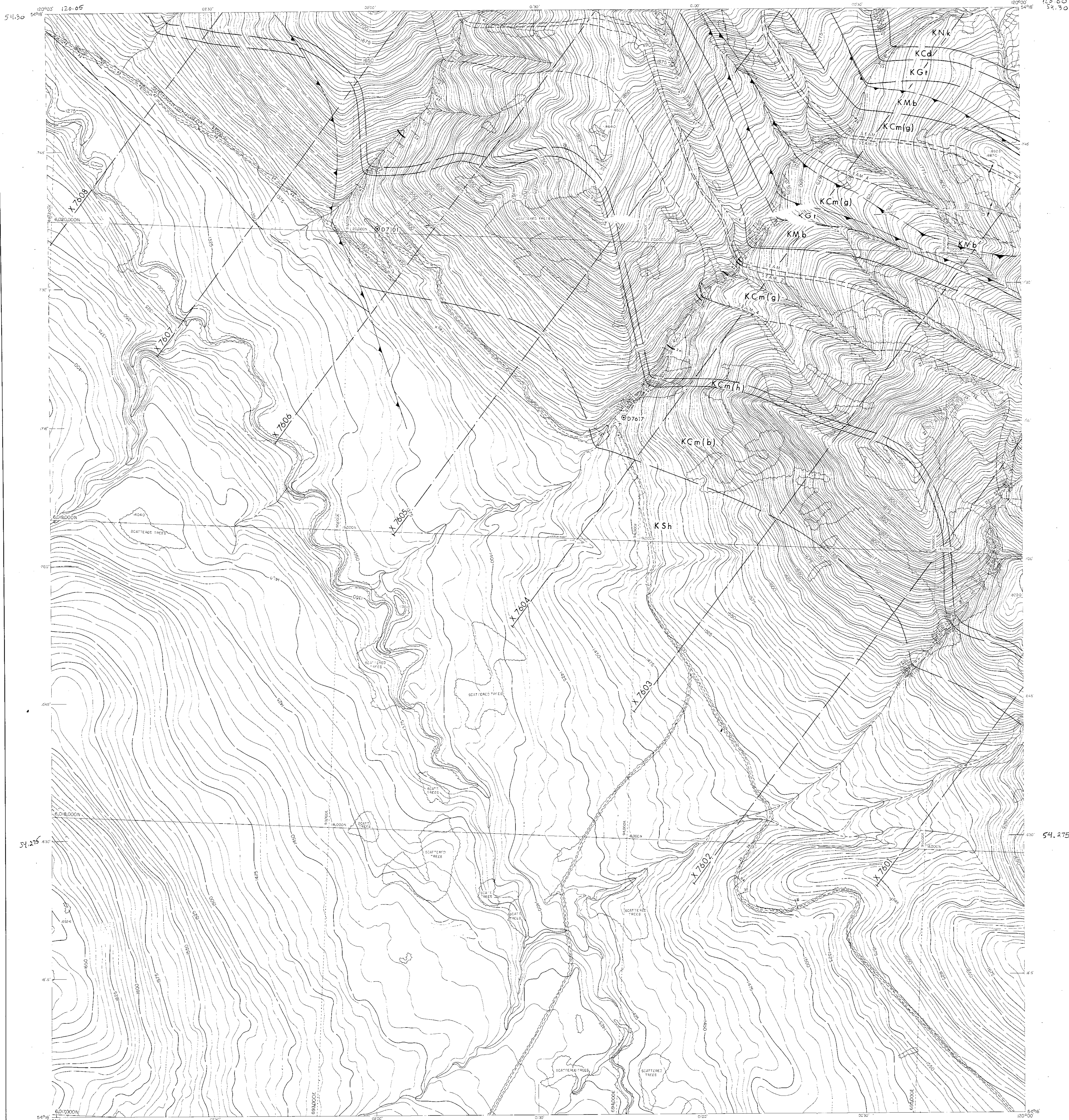
- | | |
|---------|--|
| K Sh | SHAFTESBURY FORMATION |
| K Cm(b) | COMMOTION FORMATION (Boulder Creek Member) |
| K Cm(g) | COMMOTION FORMATION (Hulcross Member) |
| K Mb | COMMOTION FORMATION (Gates Member) |
| K Gf | MOOSEBAR FORMATION |
| K Cd | GETHING FORMATION |
| K Nk | CADOMIN FORMATION |
| | NIKANASSIN FORMATION |

SURVEY NOTE

The Horizontal and Vertical Co-ordinates were established by Burnett Resource Surveys Ltd. (Vancouver, B.C.) under the supervision of D.H. Burnett, P. Eng., B.C.L.S., using MPAS Tellurometers and DKMSA Theodolites. Horizontal Co-ordinates are derived from Trig. Station Mt. Gorman (2379) Lat. 54° 15' 43.215" Long. 120° 50' 07.218", which is within the same trig. network as Quintette E. (2374) Lat. 54° 51' 30.330" Long. 120° 52' 38.310". Elevations are above Mean Sea Level and derived from Trig. Station Mt. Gorman, elev. = 2389.2m and where established by trig. levelling, vertical angles being read at both ends of each course simultaneously. The Field Survey was made between September 5 and September 30, 1975.

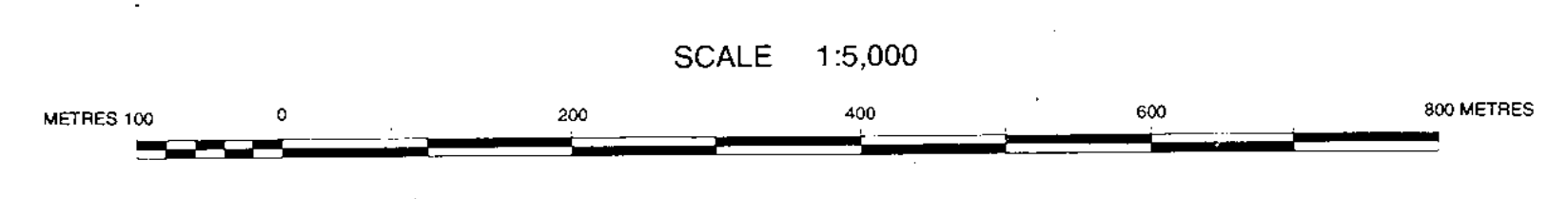
PR-50001 76(2)A

DENISON COAL LIMITED <small>(COAL DIVISION)</small>		
CALGARY	ALBERTA	
SAXON COAL LTD. SAXON EAST DETAIL GEOLOGY		
DRAWN BY:	DATE: MAY 26, 1976	SCALE: 1:5,000
APPROVED BY:	DRAWING NO: SXON 76-0706-R01	
PREPARED BY:	DATE:	



LEGEND

- | | | | | | |
|----------------|-------|---------------------|-------|--------------|-----------|
| Improved road | | River | | DIP & STRIKE | 136 |
| Secondary road | | Stream | | ANTICLINE | |
| Track or trail | | Intermittent stream | | SYNCLINE | |
| Railway | | Swamp | | FAULT | |
| Fence | | Contours | | COAL SEAM | |
| Wall | | Horizontal control | | | |
| Cul line | | Vertical control | | | |
| Tree area | | Spot elevation | | | |
| Tree line | | Photo point | | | |



CONTOUR INTERVAL: 5 METRES
DATE OF PHOTOGRAPHY: SEPT. 8, 1975
DATE OF MAPPING: MAY 19, 1976

COMPILED BY
burnett resource surveying Ltd.
Geological Surveyors

- | | |
|---------|--|
| K Sh | SHAFTESBURY FORMATION |
| K Cm(b) | COMMOTION FORMATION (Boulder Creek Member) |
| K Cm(h) | COMMOTION FORMATION (Hudsons Member) |
| K Cm(g) | COMMOTION FORMATION (Gaines Member) |
| K Mb | MOOSEBAR FORMATION |
| K Gf | GETHING FORMATION |
| K Cd | CADOMIN FORMATION |
| K Kk | NIKANASSIN FORMATION |

SURVEY NOTE

The Horizontal and Vertical Co-ordinates were established by Burnett Resource Surveys Ltd. (Vancouver, B.C.) under the supervision of D.H. Burnett, P. Eng., B.C.L.S., using MRA3 Tellurometers and DKM2A Theodolites. Horizontal Co-ordinates are derived from Trig. Station Mt. Gorman (2379) Lat. 54° 10' 43.715" Long. 120° 00' 07.218", which is within the same trig. network as Quintette E. (2374) Lat. 54° 01' 30.330" Long. 120° 02' 38.310". Elevations are above Mean Sea Level and where established by trig. levelling, vertical angles being read at both ends of each course simultaneously. The Field Survey was made between September 5 and September 30, 1975.

PK-SAXON 76 (2)A

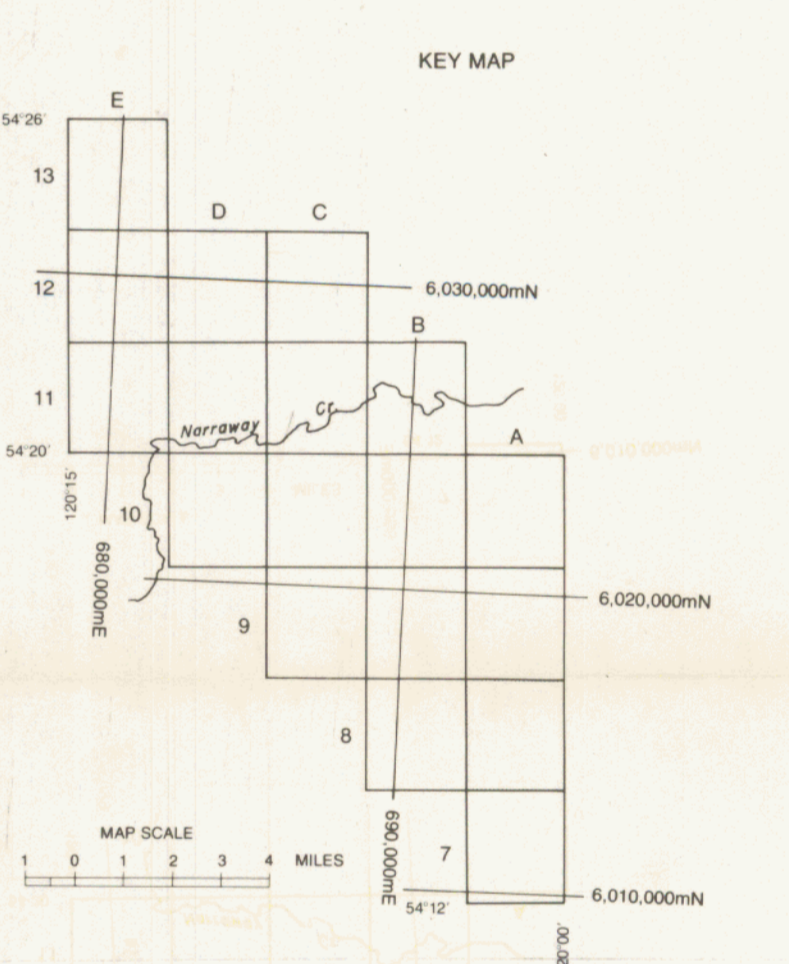
DENISON COAL LIMITED
(COAL DIVISION)

CALGARY ALBERTA

SAXON COAL LTD.
SAXON EAST

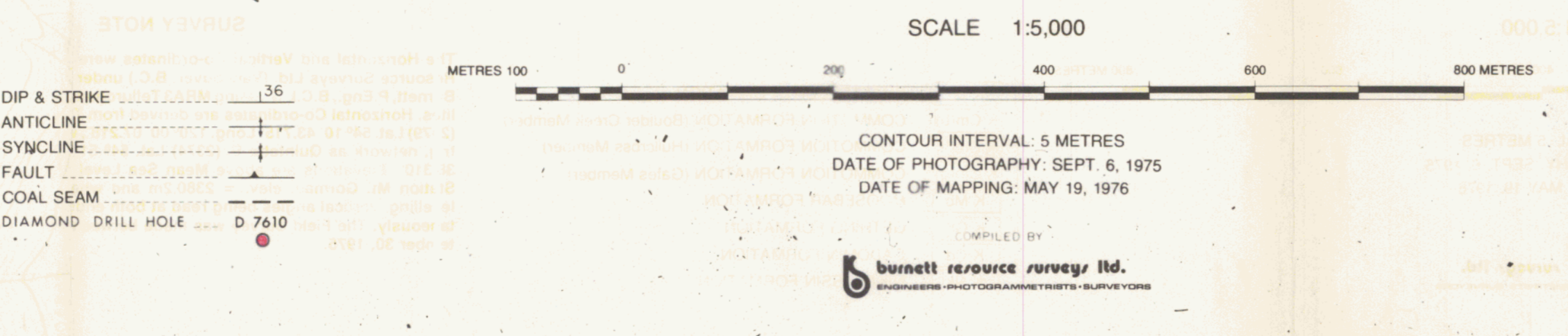
DETAIL GEOLOGY

DRAWN BY: DATE: MAY 26, 1976 SCALE: 1:5,000
APPROVED BY: DRAWING NO: SAXON 76-070a-R01
PREPARED BY: DATE:



- LEGEND**
- SANDSTONE
 - SHALE
 - CONGLOMERATE
 - CARBONACEOUS SHALE
 - KNOWN COAL SEAM
 - ASSUMED COAL SEAM

- LEGEND**
- Improved road
 - Secondary road
 - Track or trail
 - Railway
 - Fence
 - Wall
 - Cut line
 - Tree area
 - Tree line
 - River
 - Stream
 - Intermittent stream
 - Swamp
 - Contour
 - Horizontal control
 - Vertical control
 - Spot elevation
 - Photo point



- LEGEND**
- SHAFTESBURY FORMATION
 - COMMOTION FORMATION (Boulder Creek Member)
 - COMMOTION FORMATION (Hulcross Member)
 - COMMOTION FORMATION (Hulcross Member)
 - COMMOTION FORMATION (Hulcross Member)
 - MOOSEBAR FORMATION
 - GETTING FORMATION
 - CADOMN FORMATION
 - NIKANASSIS FORMATION

SURVEY NOTE

The Horizontal and Vertical Co-ordinates were established by Burnett Resource Surveys Ltd. (Vancouver, B.C.) under the supervision of G.H. Burnett, P. Eng., S.C.L.S., using MEAS Tellurometers and OKMA Theodolites. Horizontal Co-ordinates are derived from Trig. Station Mt. Gorman (2276) at 54°10' 43.15" Long. 129°00' 07.23" Lat. which is within the same trig. network as Quinette E. (2374) Lat. 54° 51' 39.33" Long. 129° 52' 36.51". Elevations are above Mean Sea Level and derived from Trig. Station Mt. Gorman, elev. = 2380.2m and where established by trig. levelling, vertical angles being read at both ends of each course simultaneously. The Field Survey was made between September 5 and September 28, 1975.

PR-330N 76 (2)A 627

SAXON COAL LIMITED
DENISON COAL LIMITED
 CALGARY ALBERTA

SAXON SOUTH GEOLOGY

DRAWN BY: TIESSEN DATE: Dec 76 SCALE: 1:5,000
 APPROVED BY: DRAWING NO: SKON 76 - 0700 - R01
 PREPARED BY:

Saxon 76 (2) A
Sheet # 1

GEOLOGICAL LEGEND

- DRIFT COVERED AREA
- GEOLOGICAL BOUNDARY (Defined, Approximate, Assumed, Estimated)
- LIMIT OF GEOLOGICAL MAPPING
- BEDDING TOPS KNOWN (Horizontal, Inclined, Vertical, Overturned, Dip Unknown)
- BEDDING TOPS UNKNOWN (Inclined, Vertical, Dip Unknown)
- BEDDING TREND (Dip Unknown, Top Unknown, Dip and Top Known, Dip Known, Top Unknown)
- BEDDING ESTIMATED DIP (Gentle, Moderate, Steep)
- DRAG FOLD (Arrow indicates Plunge)
- STRUCTURAL TREND (From Aerial Photograph)
- FAULT (Defined, Approximate, Assumed)
- FAULT (Inclined, Vertical)
- FAULT (Overturned, Strike, Reverse, Normal)
- THRUST FAULT (Plunge in Direction of Dip, Defined)
- THRUST FAULT (Approximate, Assumed)
- JOINT (Inclined, Vertical, Horizontal)
- ANTICLINE (Defined, Approximate)
- ANTICLINE (Overturned, SYNCLINE (Overturned)
- ANTICLINE OR SYNCLINE (Arrow indicates Plunge)
- ESCARPMENT
- FOSSIL LOCATION
- COAL ZONES (DEFINED, INFERRED, ASSUMED)

- UPPER CRETACEOUS**
- KDu** DUNVEGAN FORMATION: Marine and non-marine sandstone and shale
- LOWER CRETACEOUS - FORT ST. JOHN GROUP -**
- KSh** SHAFFERSBURY FORMATION: Marine shale
"North of the Waputik River the Shaffersbury Fm. is differentiated into Hasler, Goodrich & Cruiser Formations."
 - KCr** CRUISER FORMATION: Marine shale
 - KGo** GOODRICH FORMATION: Fine-grained sandstone
 - KHa** HASLER FORMATION: Dark marine shale
 - KCo** COMMOTION FORMATION
Undifferentiated
 - KCmb** COMMOTION FORMATION, Boulder Creek
Member: conglomerate, coarse to fine-grained sandstone, shale, coal
 - KCmH** COMMOTION FORMATION, Halverson
Member: dark marine shale
 - KCmG** COMMOTION FORMATION, Gates
Member: carbonaceous sandstone, shale, coal
 - KMP** MOOSEBAR FORMATION: dark marine shale
- BULLHEAD GROUP -**
- BSh** SETHING FORMATION: conglomerate, carbonaceous sandstone and shale, coal
 - BCE** CADOMIN FORMATION: massive conglomerate
- JURASSIC AND CRETACEOUS LOWER CRETACEOUS AND EARLIER**
- KXN** NIKANASSIN FORMATION: fine-grained sandstone and carbonaceous shale

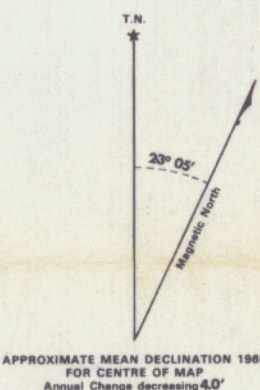
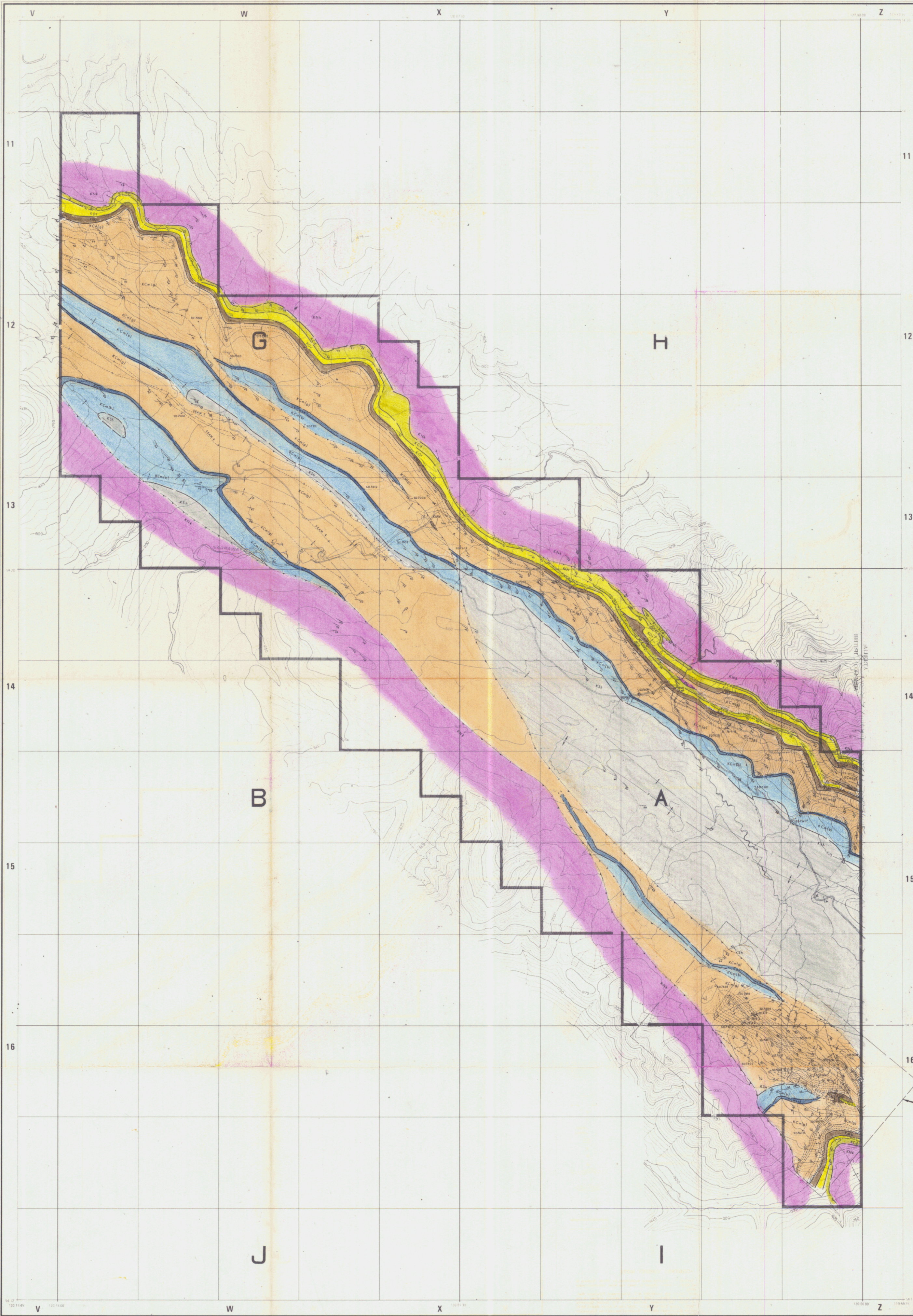
TOPOGRAPHIC LEGEND

- ACCESS ROAD ALL WEATHER
- ACCESS TRAIL LIMITED WEATHER
- RAILWAY
- AIR STRIP
- SEISMIC LINE, CUT LINE
- POWER TRANSMISSION LINE
- TRENCH
- ADIT - OPEN, CAVED
- GAS WELL
- DRY HOLE
- DRILL HOLE ROTARY
- DIAMOND
- CAMPFIRE
- CAMPFIRE - PUBLIC
- FOREST SERVICE LOOKOUT/STATION
- HORIZONTAL AND VERTICAL CONTROL
- RIVER
- STREAM
- LAKE
- SWAMP
- CONTOUR
- DEPRESSION CONTOUR
- PROPERTY BOUNDARY
- CROSS SECTION LINES

CONTROL SURVEY NOTE

The Horizontal and Vertical Co-ordinates were established by White, Hasford & Ingle Ltd. Horizontal distances were reduced to mean sea level, elevations were derived by Trig Levelling.

Horizontal Co-ordinates shown are converted B.C. Government Polyconic Rectangular Co-ordinates, based on Clarke 1886 Spheroid. Readings referred to the Meridian through 121° West. Co-ordinates derived from Trig station Gilmarte E (2274) Lat. 54° 01' 30.33" Long. 120° 37' 38.31" 28616.62 N North, 84813.85 N East. Elevations shown are about major 100 feet (30.48) derived from Trig station Gilmarte E (2274) Elevation 8044 ft.



SAXON SOUTH BASE MAP OUTLINE



SAXON PROJECT
BRITISH COLUMBIA
PHOTO REDUCED SCALE 1 - 50,000
SCALE 1:25,000

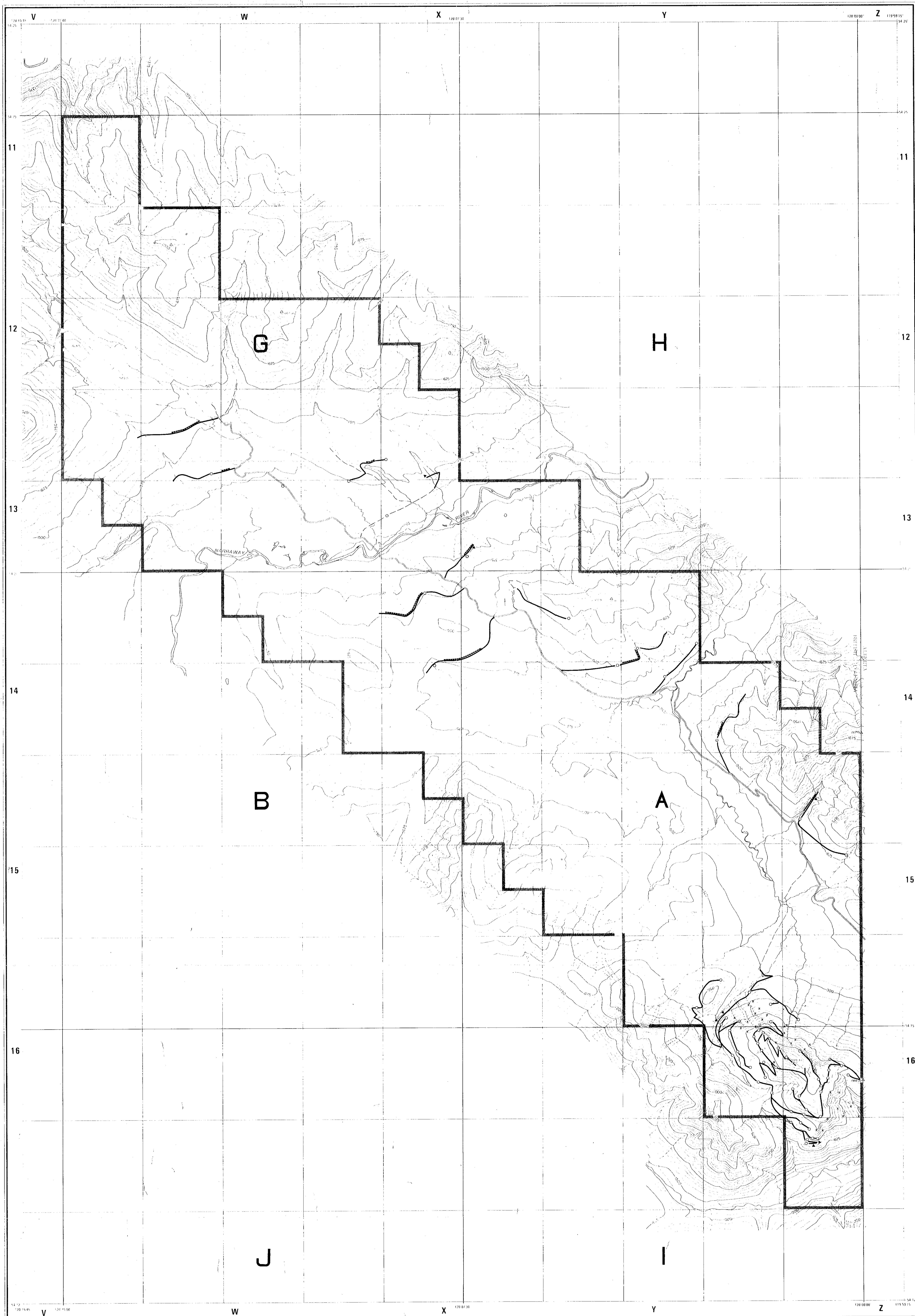
PR-SAXON-76 (2)A
SAXON COAL LIMITED
PREPARED BY DENISON COAL LIMITED

GEOLOGY

DRAWN BY: E.T.S. DATE: Jan. '77 SCALE: 1:25,000
PREP'D BY: H.P.L.D. DATE: Jan. '77 DRAWING NUMBER:
APPR'D BY: G.J. DATE: Jan. '77 SAXON 75-0016-002

627

CONTOUR INTERVAL 25 METRES
NOTE: This map is a reproduction of a photograph of a map, and is not a true map. It is not to be used for navigation or other purposes. Copyright © 1977 Denison Coal Limited.



GEOLOGICAL LEGEND

DRIFT COVERED AREA

GEOLOGICAL BOUNDARY (Defined, Assumed)

LIMIT OF GEOLOGICAL MAPPING

BEDDING TOPS KNOWN (Horizontal, Inclined)

BEDDING TOPS UNKNOWN (Inclined, Vertical, Dip Unknown)

BEDDING TREND (Dip Unknown - Top Unknown, Dip and Top Known, Dip Known - Top Unknown)

BEDDING ESTIMATED DIP (Gentle, Moderate, Steep)

DRAG FOLD (Arrow indicates Plunge)

STRUCTURAL TREND (From Aerial Photograph)

FAULT (Defined, Assumed)

FAULT (Inclined, Vertical)

FAULT (Overthrust, Side, Relative Movement)

THRUST FAULT (Inclined in Direction of Dip, Defined)

THRUST FAULT (Approximate, Assumed)

JOINT (Inclined, Vertical, Horizontal)

ANTICLINE (Defined, Assumed)

SYNCLINE (Defined, Assumed)

ANTICLINE (Overturned), SYNCLINE (Overturned)

ANTICLINE OR SYNCLINE (Arrow indicates Plunge)

ELEVATION

FOSSIL LOCATION

COAL ZONES (DEFINED, REFERRED, ASSUMED)

UPPER CRETACEOUS

LOWER CRETACEOUS

— FORT ST. JOHN GROUP —

MESOZOIC

— BULLHEAD GROUP —

JURASSIC AND CRETACEOUS

LOWER CRETACEOUS AND EARLIER

KN

TOPOGRAPHIC LEGEND

ACCESS ROAD - ALL WEATHER

ACCESS TRAIL - LIMITED WEATHER

RAILWAY

AIR STRIP

SEISMIC LINE CUT LINE

POWER TRANSMISSION LINE

TRENCH

ADIT - OPEN - CAVED

DRY HOLE

DRILL HOLE - ROTARY

CAMP SITE

CAMP GROUND - PUBLIC

FOREST SERVICE LOOKOUT STATION

HORIZONTAL AND VERTICAL CONTROL

RIVER

STREAM

LAKE

SWAMP

CONTOURS

QUADRANTARY CONTROL

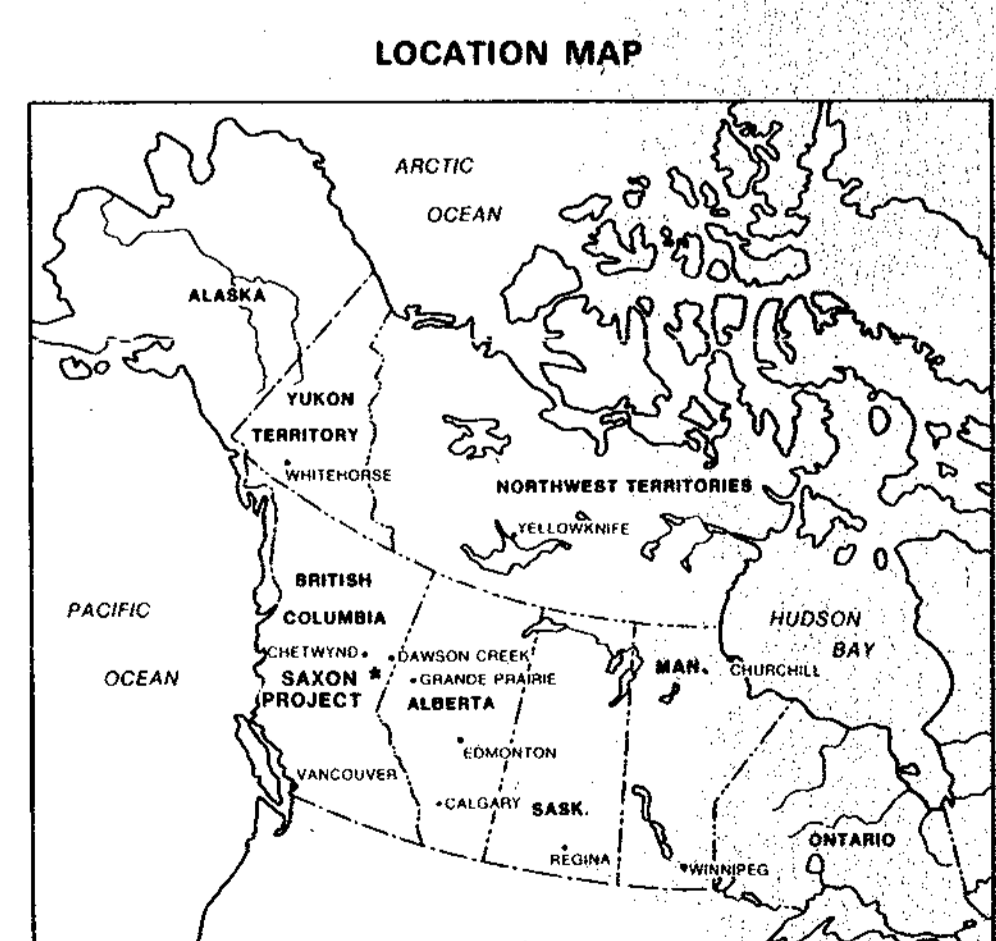
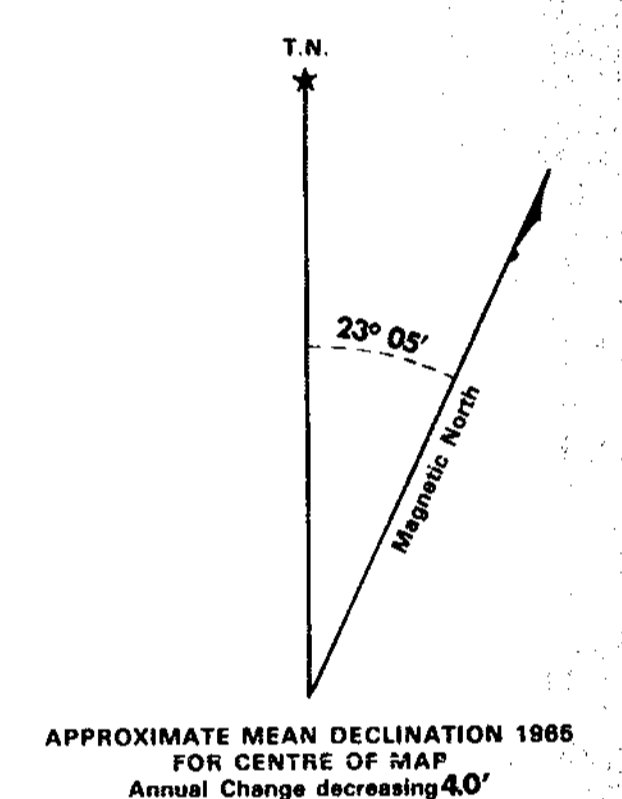
PROPERTY BOUNDARY

CROSS-SECTION LINES

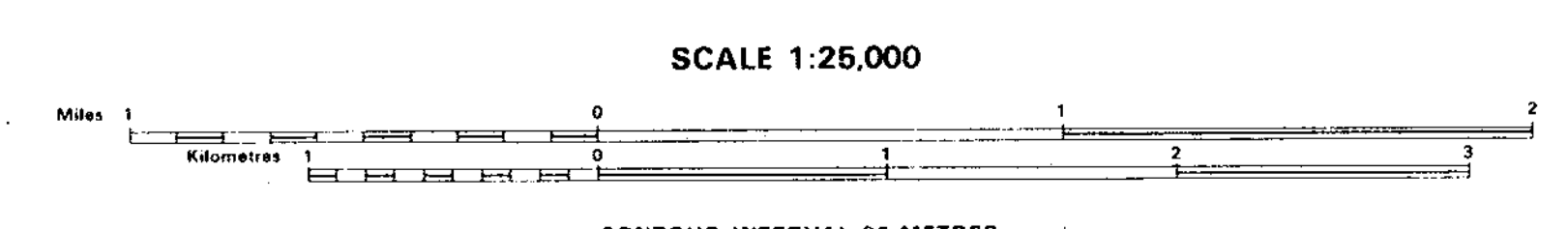
CONTROL SURVEY NOTE

The Horizontal and Vertical Coordinates were established by White, Hasford & Jones Ltd. Horizontal distances were reduced to mean sea level, elevations were derived by Trig Levelling.

Geological boundaries shown are surveyed B.C. Government Magnetic Meridian Co-ordinates based on Clarke 1866 Spheroid. Bearings referred to the Magnetic through 121° 18' 44". Co-ordinates derived from Trig Station Quinsama E (2374) Lat. 54° 51' 20.33" Long. 120° 52' 38.31" - 28618.62 N. North, 84813.85 E. East. Elevation shown are above mean sea level (Geoid) derived from Trig Station Quinsama E (2374) Elevation 6046 N.



SAXON PROJECT
BRITISH COLUMBIA



- PROPOSED DRILL HOLE
- PROPOSED CAT TRENCH
- PROPOSED HAND TRENCH
- PROPOSED NEW ROADS
- PROPOSED ADITS

DENISON MINES (B.C.) LIMITED
CALGARY ALBERTA

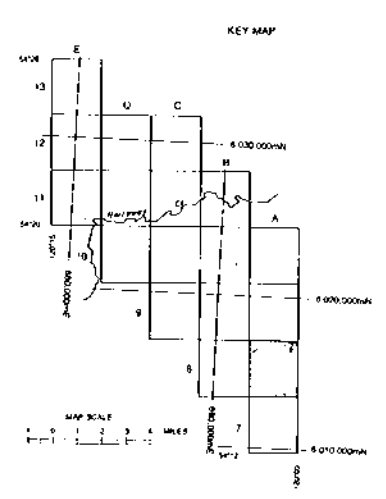
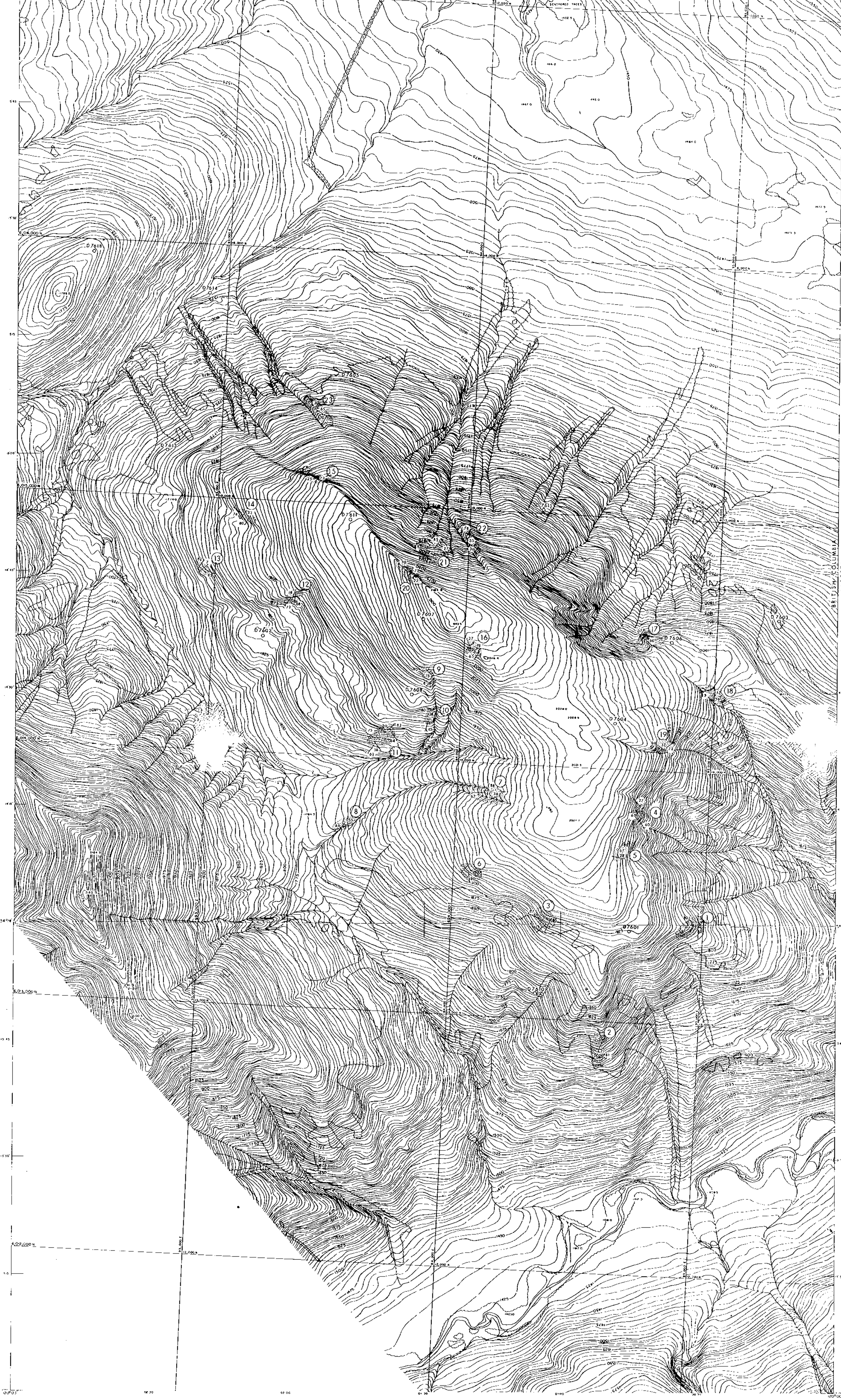
SAXON
PROPOSED 1976 WORK PROGRAM

DESIGNED BY: J.W.K. DATE: APR. 76 SCALE: 1:25,000
APPROVED BY: DRWG. NO.

NOTE: 25 Meter contour was interpolated from photogrammetric data only, which was compiled from aerial photographs taken 1926 to 1934, and from 1:50,000 National Topographic Series maps.

COPYRIGHT DENISON MINES LIMITED

624



LEGEND

IMPROVED ROAD
 SECONDARY ROAD
 TRACK OR RAIL
 RAILWAY
 FENCE
 RIVER
 STREAM
 INTERMEDIATE SWAMP
 SWAMP
 COAL SEAM
 JUNICE

SCALE 1:5,000
 METRES 100 0 300 600 900 METRES
 CONTOUR INTERVAL 5 METRES
 DATE OF PHOTOGRAPHY: SEPT. 8, 1915
 DATE OF MAPPING: MAY 18, 1916
 COMPILED BY

K 5N SHAFESBURY FORMATION
 K 5ND COMBINATION FORMATION (Bowling Creek Member)
 K 5NE COMBINATION FORMATION (Hudsons Member)
 K 5NW COMBINATION FORMATION (Gibbs Member)
 K 6M MOOSEBAR FORMATION
 K 6D DEERING FORMATION
 K 6CA CACOVEN FORMATION

SURVEY NOTE
 The Horizontal and Vertical Coordinates were established by Brunel
 Reference Survey of 1871 (Transverse B.C.) under the supervision of D.H.
 Burnett, P. Eng., B.C.L.S., using M.A.S. Tachymetry and STEREO THEODOLITE
 (2375) Lat. 54° 10' 41.715" Long. 120° 50' 07.218" with the same
 network as Ouellette E. (2374) Lat. 54° 51' 30.330" Long. 120° 52'
 58.310" Elevations are above Mean Sea Level and derived from Trig
 Station Mt. Gorman, elev. = 2380.0m and where established by trig
 leveling, vertical angles being read at both ends of each course simulta-
 neously. The Field Survey was made between September 5 and Sep-
 tember 30, 1915.

PR-50XON 76(2)A
DENISON COAL LIMITED
 (LOCAL DIVISION)
 CALGARY ALBERTA
SAXON COAL LTD.
 SAXON SOUTH

GEOLOGICAL LEGEND

DRIFT COVERED AREA	
GEOLOGICAL BOUNDARY (Defined, Approximate)	
LIMIT OF GEOLOGICAL MAPPING	
BEDDING TOPS KNOWN (Horizontal, Inclined)	
BEDDING TOPS UNKNOWN (Inclined, Vertical, Dip Unknown)	
BEDDING TREND (Dip Unknown - Top Unknown)	
BEDDING ESTIMATED DIP (Dip Moderate, Steep)	
CRAG FOLD (Arrow Indicates Plunge)	
STRUCTURAL TREND (From Aerial Photograph)	
FAULT (Defined, Approximate, Assumed)	
FAULT (Inclined, Vertical)	
FAULT (Downthrow Side, Relative Movement)	
THRUST FAULT (Points in Direction of Dip - Defined)	
THRUST FAULT (Approximate, Assumed)	
JOINT (Inclined, Vertical, Horizontal)	
ANTICLINE (Defined, Approximate)	
SYNCLINE (Defined, Approximate)	
ANTICLINE (Overturned), SYNCLINE (Overturned)	
ANTICLINE OR SYNCLINE (Arrow Indicates Plunge)	
ESCARPMENT	
FOSSIL LOCATION	
COAL ZONES DEFINED	
- INFERRED	
- ASSUMED	

UPPER CRETACEOUS

LOWER CRETACEOUS - FORT ST. JOHN GROUP

KDu	DUNVEGAN FORMATION: Marine and non-marine sandstone and shale
KSh	SHAFFERSBURG FORMATION: Marine shale *North of the Wolverine River the Shaffersburg Fm. is differentiated into Westar, Goodrich & Cruiser Formations.
KCr	CRUISER FORMATION: Marine shale
KGo	GOODRICH FORMATION: Fine-grained sandstone
KHa	HASLER FORMATION: Dark marine shale
KCa	COMMOTION FORMATION: Undifferentiated
KCa(h)	COMMOTION FORMATION, Boulder Creek Member: conglomerate, coarse to fine-grained sandstone, shale, coal
KCa(h)	COMMOTION FORMATION, Hudsons Member: dark marine shale
KCa(g)	COMMOTION FORMATION, Gams Member: carbonaceous sandstone, shale, coal
KMo	MOOSEBAR FORMATION: dark marine shale
- BULLHEAD GROUP -	
KG1	GETHING FORMATION: conglomerate, carbonaceous sandstone and shale, coal
KCa	CADOMIN FORMATION: massive conglomerate
JURASSIC AND CRETACEOUS LOWER CRETACEOUS AND EARLIER	
KRn	NIKANASIN FORMATION: fine-grained sandstone and carbonaceous shale

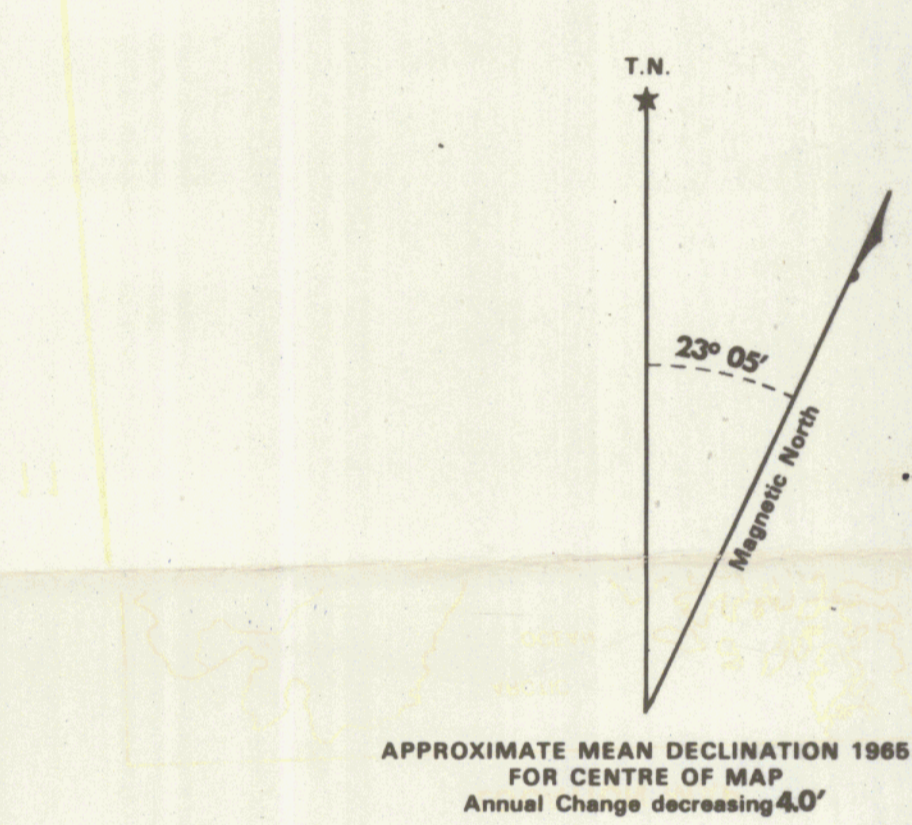
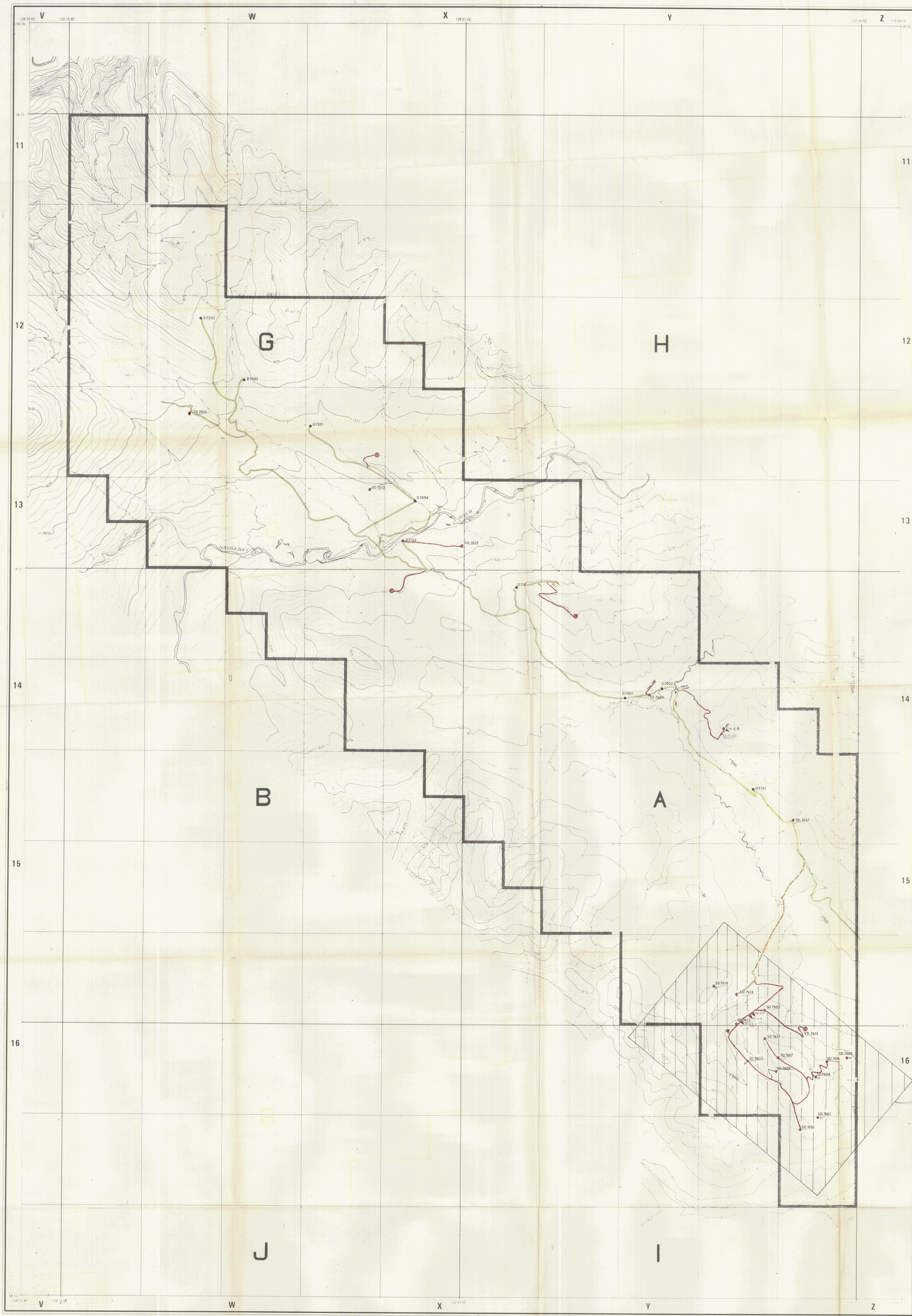
TOPOGRAPHIC LEGEND

ACCESS ROAD - ALL WEATHER	
ACCESS TRAIL - LIMITED WEATHER	
RAILWAY	
AIR STRIP	
SEISMIC LINE CUT LINE	
POWER TRANSMISSION LINE	
TRENCH	
ADIT - OPEN - CAVED	
GAS WELL	
DRY HOLE	
DRILL HOLE - ROTARY	
DIAMOND	
CAMPITE	
CAMPGROUND - PUBLIC	
FOREST SERVICE LOOKOUT/STATION	
HORIZONTAL AND VERTICAL CONTROL	
RIVER	
STREAM	
LAKE	
SWAMP	
CONTOURS	
DEPRESSION CONTOUR	
PROPERTY BOUNDARY	
CROSS-SECTION LINES	

CONTROL SURVEY NOTE

The Horizontal and Vertical Co-ordinates were established by White, Hestford & Ingers Ltd. Horizontal distances were reduced to mean sea level, elevations were derived by Trig Levelling.

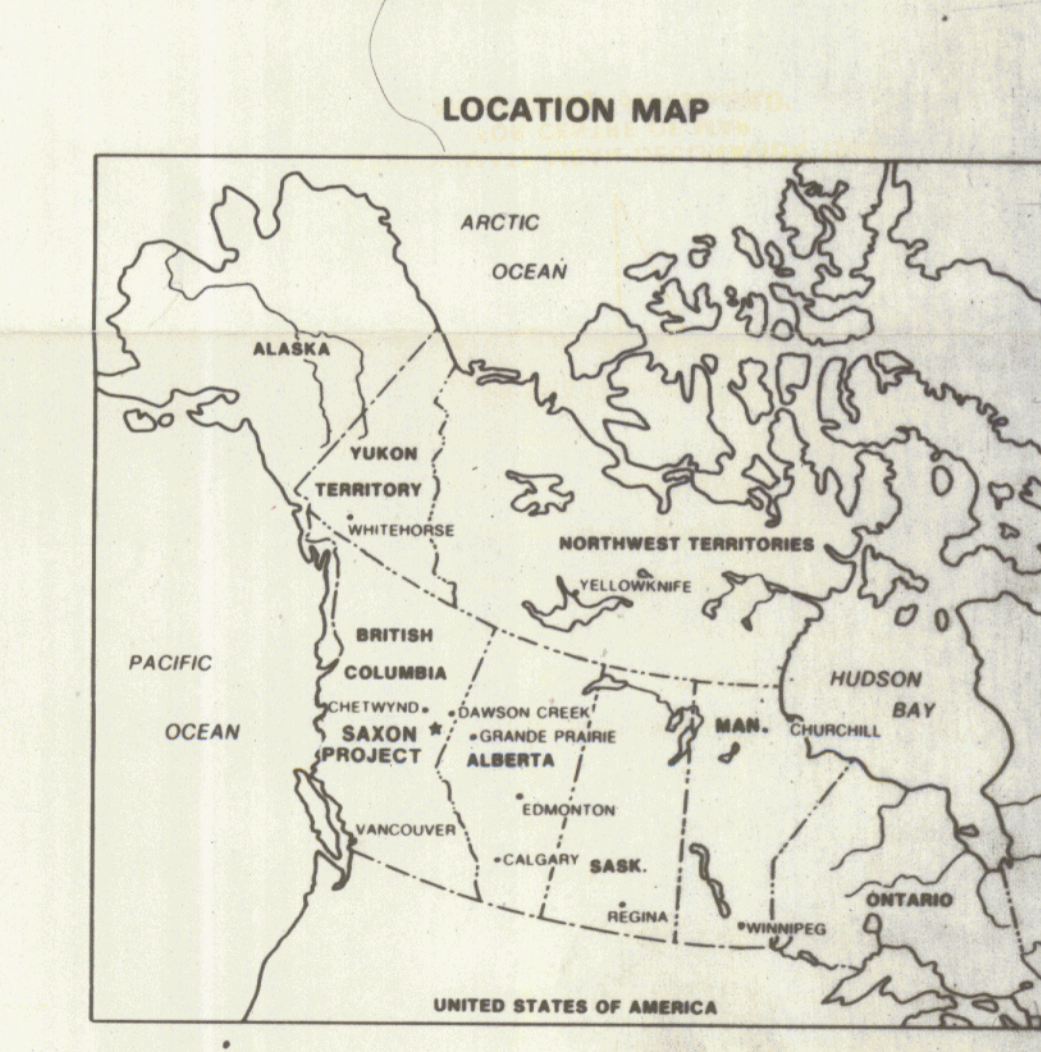
Horizontal Co-ordinates shown are converted B.C. Government Polyonic Rectangular Co-ordinates, based on Clarke 1866 Spheroid. Bearings referred to the Magnetic Meridian, 121° 00' W. Co-ordinates derived from Trig station Quinette E. (22374) Lat. 49° 01' 30.32" Long. 120° 52' 38.31" 38816.52 ft. North, 84813.85 ft. East. Elevations shown are above mean sea level (Geoid) derived from Trig station Quinette E. (22374) Elevation 8044 ft.



LEGEND

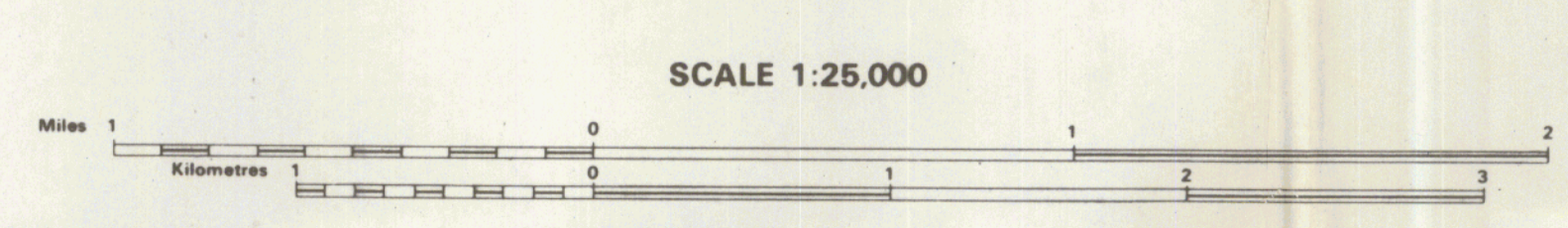
	PREPARED DRILL SITE
	HELICOPTER DRILL HOLE
	OLD DRILL HOLE
	NEW DRILL HOLE
	NEW ADIT
	OLD ADIT
	CAT TRENCH
	HAND TRENCH
	EXISTING ROAD
	EXISTING ROAD EXTENSIVELY UPGRADED
	NEW ROAD
	SURFACE TRAIL ONLY, WITHOUT SIDE HILL CUTS
	ADIT DISPOSAL AREA

NOTE: HAND TRENCHES LOCATED IN THE SHADED PORTION OF THE MAP ARE SHOWN ON DRAWING No. SXON 76-0685-R01.



**SAXON PROJECT
BRITISH COLUMBIA**

PR - SAXON 76(2)A
SAXON 1976 EXPLORATION PROGRAM
SXON 77-0726-R01

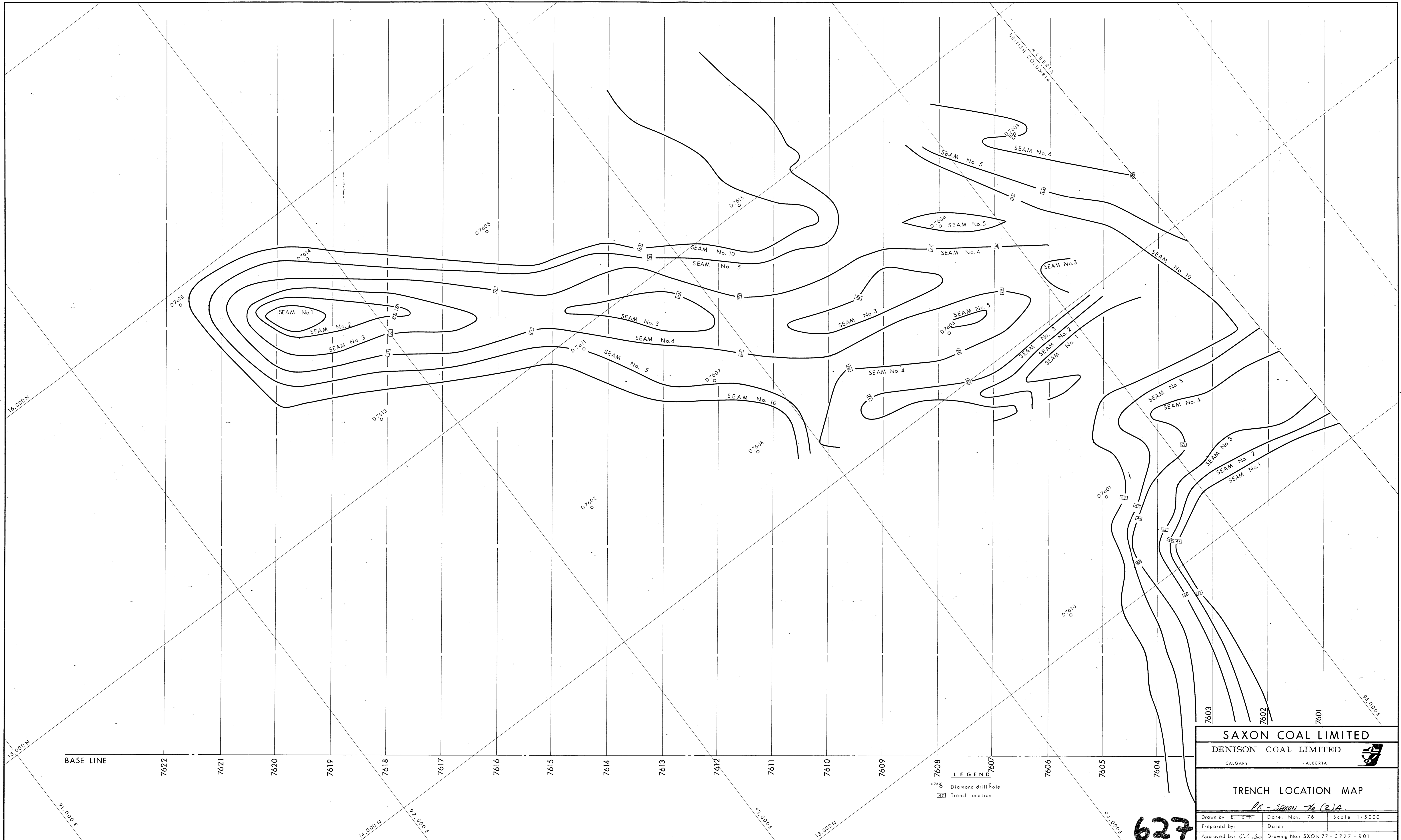


CONTOUR INTERVAL 25 METRES

NOTE: 25 Metre contour was interpolated from photographic map, which was compiled from aerial photographs taken 1970 to 1974 and from 1:50,000 National Topographic Series maps.

COPYRIGHT: DENISON MINES LIMITED

627

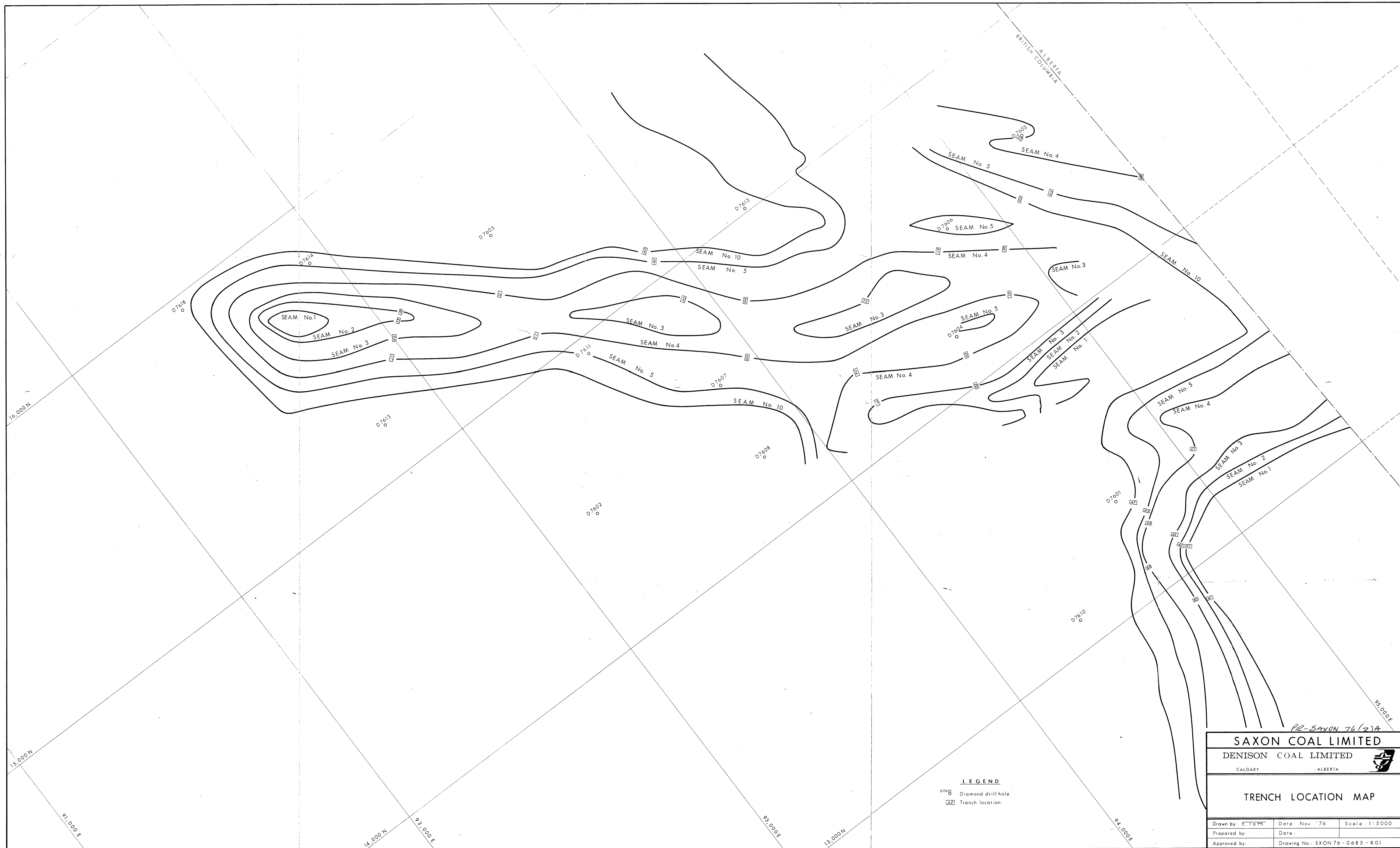


SAXON COAL LIMITED
DENISON COAL LIMITED
 CALGARY ALBERTA

TRENCH LOCATION MAP
PR - SAXON 76 (2) A.

Drawn by: E. Toth	Date: Nov '76	Scale: 1:5000
Prepared by:	Date:	
Approved by: G. J. [Signature]	Drawing No: SXON 77 - 0727 - R01	

627



LEGEND
 ○ Diamond drill hole
 □ Trench location

PC-SAXON 76(2)A

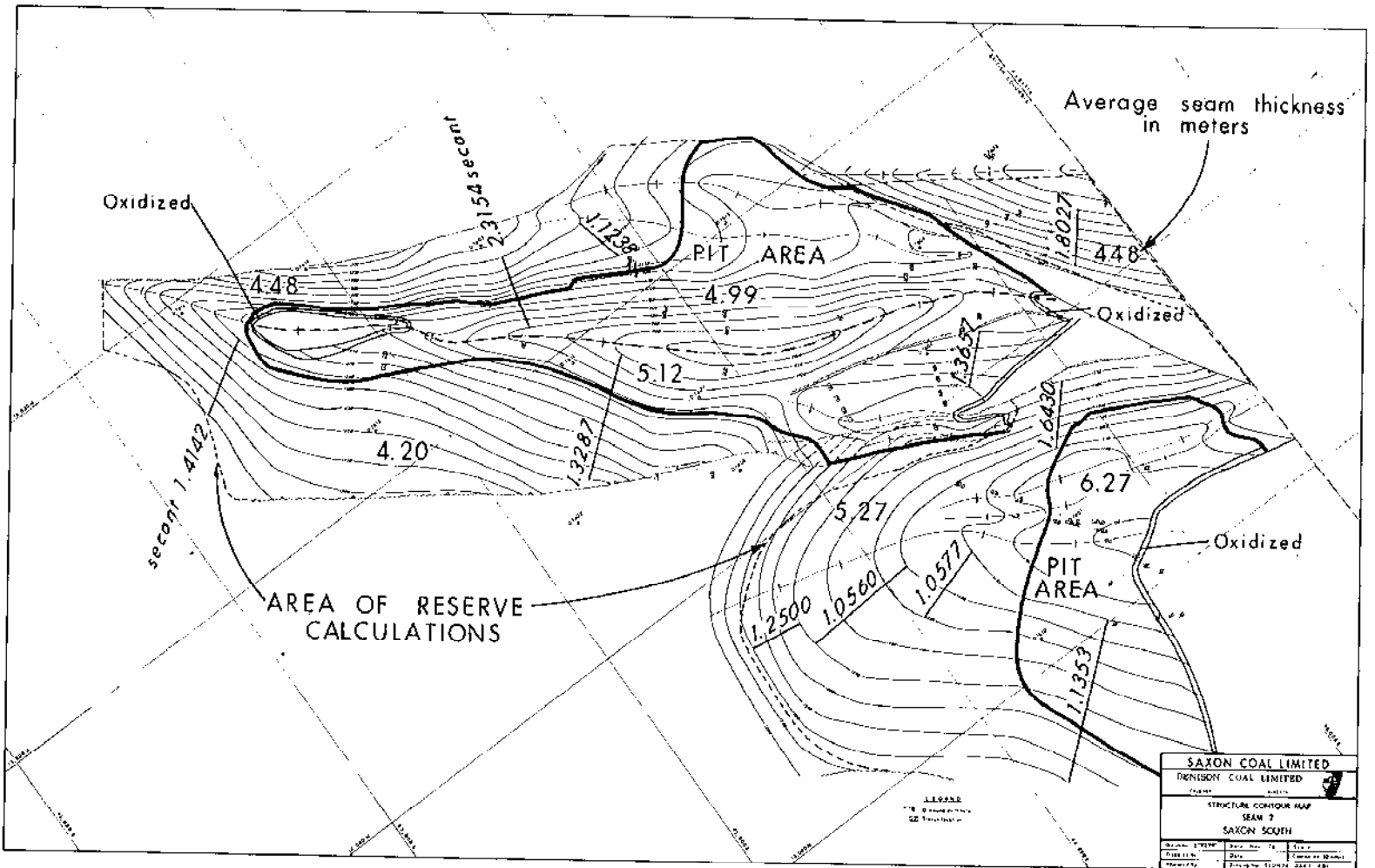
SAXON COAL LIMITED
 DENISON COAL LIMITED

CALGARY ALBERTA

TRENCH LOCATION MAP

Drawn by: E.T.G.P.	Date: Nov '76	Scale: 1:5000
Prepared by:	Date:	
Approved by:	Drawing No: SXON 76-0685-R01	

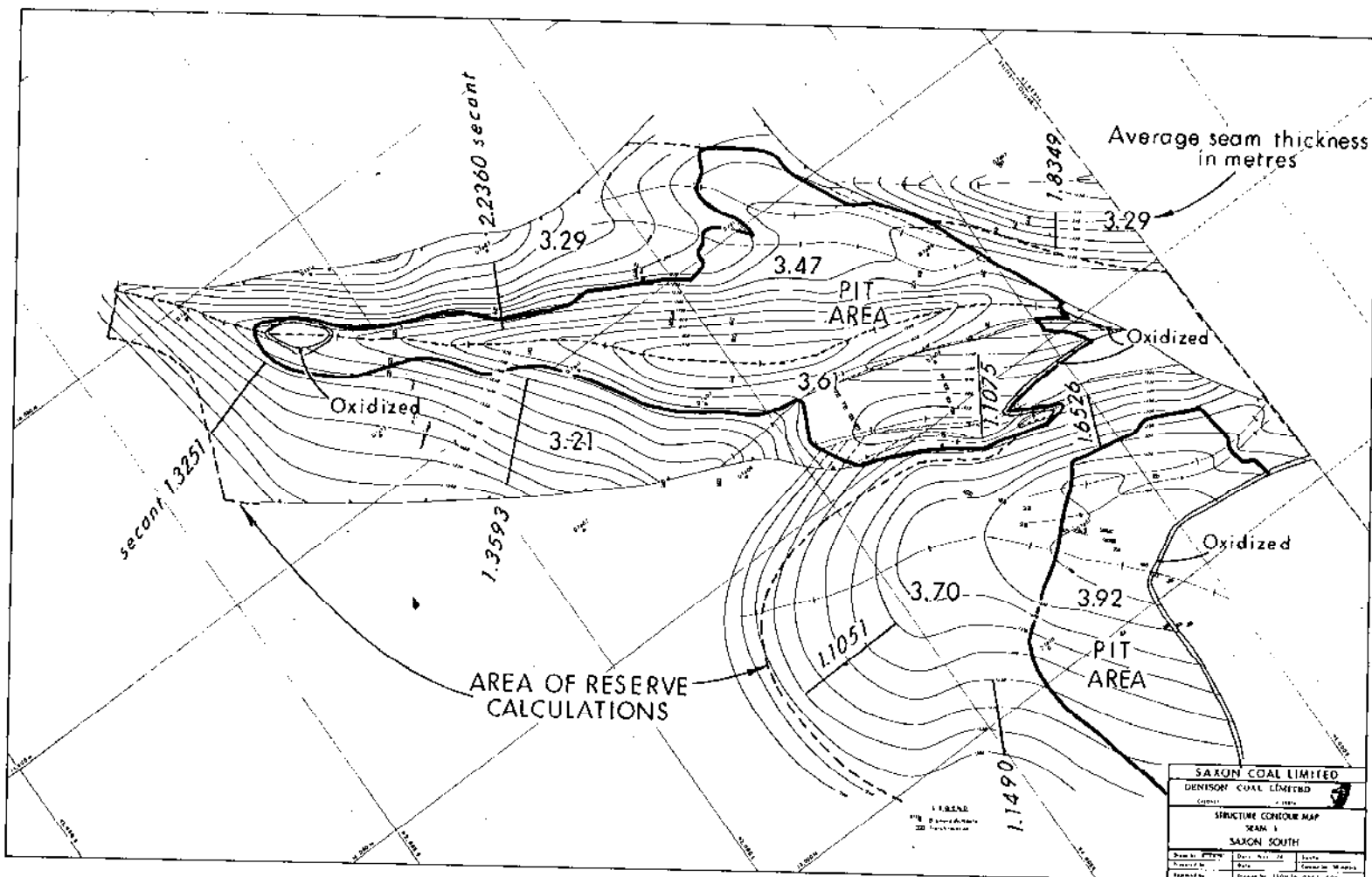
627



PK-SAXON 76 (2) A-2

1:25,000
RESERVE MAP
SEAM 2

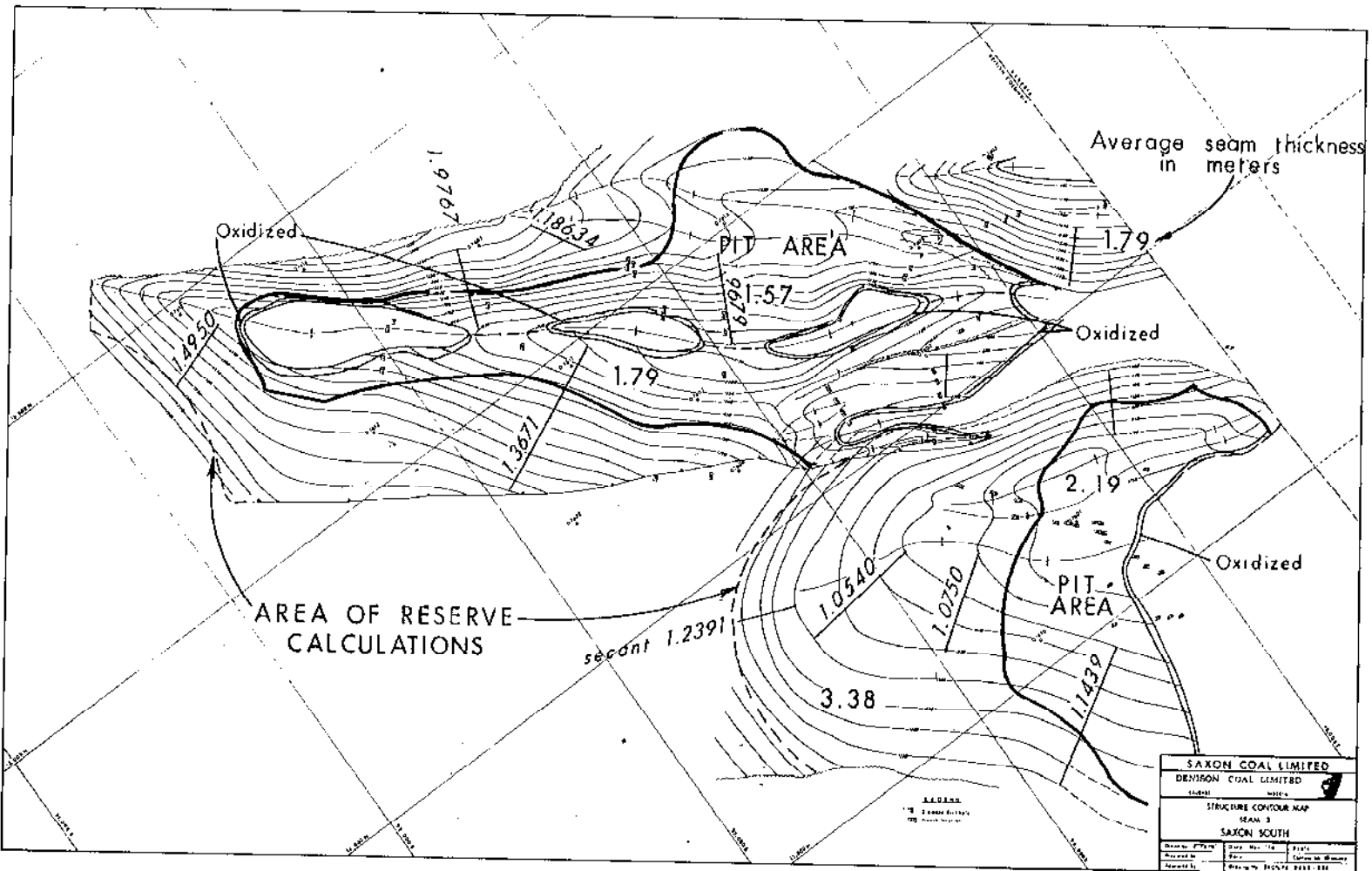
627



PR - Saxon 76 (2) A-2

1:25,000
RESERVE MAP
SEAM 1

627



PR. SAXON 76(2)A-2

1:25,000
RESERVE MAP
SEAM 3

627