

LAH MINES LTD.
GRAPHIC CORE LOG

79-4

HOLE NO. SMG-79-4

HOLE NO. SMG-79-4

LOG BY: R. T. Remstang

ELEV: _____

HOLE SIZE: HQ

PROJECT: South Mount Gething

DATE: 21 May 1979

N: 6,204,135 N

AIR WATER

LEASE: 4131

E: 542,116 E

T.D. 222.28 m P.D.

SEC: _____ T: _____ R: _____

LITHOLOGY ANALYSIS

638

DEPTH	STRAILOG	THICK	SAMPLE NO.	GRAV.	LITHOLOGY	ANALYSIS
0 m						
75°	0.05 0.13				Coal - 0.06 m - Canneloid, dull, black Coal - 0.12 m - 0.07 m black, cleated, mostly bright 0.06 m canneloid, black, dull	
20 m	0.53 #1				Coal - 0.53 m - black, dull to bright, generally blocky breakage - well developed cleat at the base	
80°	0.04				Coal - 0.04 m - black, bright, banded	
30 m	0.07				Coal - 0.07 m - Canneloid - dull, black	
50°	0.17 #2a 0.49 #2b				Coal - 0.17 m - black, dull with bright bands, pyritic Coal - 0.49 m - black, dull with bright bands	
40 m	0.14				Coal - 0.14 m - dull canneloid & bright, cleated	
50 m	0.49 0.13				Coal - 0.49 m - variable dull to bright with variable cleat, black Coal - 0.13 m - black, variable components	
60 m	0.07 0.10 0.46				Coal - 0.07 m - black, dull with bright bands Coal - 0.10 m - black, bright, vitrain banded Coal - 0.46 m - black, bright, largely vitrain, well developed cleat	
70 m	0.02				Coal - 0.02 m -	
80 m	0.39 #3a 0.89 #3b				Coal - 0.39 m - black, canneloid, metallic lustre Coal - 0.89 m - black, rubbly breakage, indistinct banding, generally durain	
90 m	0.27				Coal - 0.27 m - black, banded, well developed cleat at the base	
100 m	0.10				Coal - 0.10 m - black, dull to bright, banded, granular, 10% pyritic	
120 m	0.09 0.33				Coal - 0.09 m - canneloid Coal - 0.33 m - black, bright, banded	
75%	0.47				Coal - 0.47 - Canneloid at the top to bright at the base, well developed cleat at the base	
130 m	0.07 0.08 0.06				Coal - 0.07 m Coal - 0.08 m Coal - 0.06 m	
140 m	0.16				Coal - 0.16 m - black, bright, well developed cleat	
140 m	0.17				Coal - 0.17 m - black, dull, ashy	
150 m	0.09				Coal - 0.09 m	
80°	0.03				Coal - 0.03 m - boney	
150 m	0.03				Coal - 0.03 m	
160 m	0.02 0.04				Coal - 0.02 Coal - 0.04	
160 m	0.14				Coal - 0.14 m - black, bright, banded, well developed cleat	
170 m	0.05 0.07 0.02				Coal - 0.05 m - dull canneloid 0.07 m - mudstone Coal - 0.02 m - black, dull ashy, few vitrain streaks	
170 m	0.09				Coal - 0.09 m - black, bright, strongly cleated, abundant vitrinite	
180 m	0.70				Coal - 0.70 m - black, bright, banded	
190 m	0.07				Coal - 0.07 m - bright, black, well developed cleat	
200 m	0.23 0.04				Coal - 0.23 m - black, banded, vitrinite streaks in a dull mass, blocky to cleated Coal - 0.04 m - black, dull ashy, few bright streaks	
210 m						
220 m					End of Hole @ 222.28 metres	

UTAH MINES LTD. GRAPHIC CORE LOG

79-5

HOLE NO. SMC-79-5

HOLE NO. SMC-79-5

LOG BY: A. T. Armstrong

ELEV: _____

HOLE SIZE: H.Q. 3.782 in

PROJECT: South Mount Getting

DATE: May 26, 1929

N: 6, 204, 940 m

AIR WATER

LEASE: 4133

DEPTH STRIP LOG THICK SAMPLE GRAV.

E: 541, 260 m

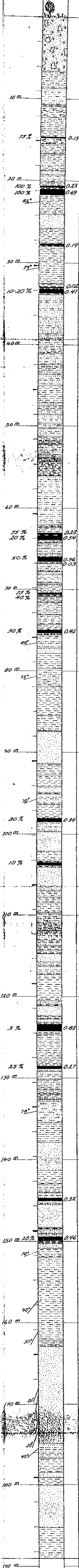
I.D. 188.98 m P.D.

SEC. T. R.

LITHOLOGY

ANALYSIS

638



UTAH MINES LTD
GRAPHIC CORE LOG

79-6

HOLE NO. SMG-79-6

HOLE NO. SMG-79-6

LOG BY J. Ridley

ELEV. 854 m

HOLE SIZE HQ 3 782"

PROJECT South Mount Gething

DATE June 6, 1979

N 6,202,950

AIR WATER

LEASE 4122

E 540,428

TD 193.86 MPD

SEC T. R

% REC DEPTH STRIP LOG THICK SAMPLE NO GRAV

LITHOLOGY ANALYSIS

638

% REC	DEPTH	STRIP LOG	THICK	SAMPLE NO	GRAV	LITHOLOGY	ANALYSIS
	0					Overburden	
30%	25m					Coal black, very strongly broken	
40%	20m					Coal black, fine, cleat fragments	
25%	20m					Coal black banded	
65%	30m					Coal black, dull with bright bands - well cleated over	
40%	30m					Coal black, dull to bright	
CORE LOSS better than 50% - refer to DENSITY LOG for suspected COAL seams							
80%	85m					Coal black shiny, friable	
80%	85m					Coal black, moderately shiny, one prominent cleat	ash content
80%	82m					Coal black, primarily durain and fusain with few vitrain streaks - few shear surfaces	
85%	82m					Coal black banded fusain and vitrain - few shear surfaces	
50%	90m					Coal black, weakly banded and poorly developed cleat	
65%	130m	2				Coal black, bright vitrain streaks and generally dull mass - moderately well developed cleat over short length	
45%	100m	3				Coal black, banded with minor vitrain in durain and fusain mass - prominent single cleat	
30%	105m					Coal black, very bright - strongly sheared	
35%	110m					Coal black - durain with broad laminae of vitrain	
25%	120m					Coal black, banded durain with vitrain streaks one prominent cleat	
44%	130m					Coal black, massive dull to bright and strongly cleated in one direction.	
60%	145m					Coal dull and possibly ashy to banded durain and vitrain	
70%	150m					Coal black generally bright fusain and vitrain one prominent cleat	
70%	155m					Coal black, banded durain with vitrain streaks one prominent cleat	
50%	160m					Coal black, bright, strongly cleated	
	165m					Coal black, banded, single prominent cleat	
80%	180m					Coal dull, black, canneloid type coal at the top - dull, black with fine vitrain bands at bottom - very strongly broken	
30%	185m					Coal black, banded dull to bright - very strongly broken	
25%	190m					Coal black banded dull with vitrain bands strongly cleated	
End of Hole 193m 86cm							

LAH MINES LTD. GRAPHIC CORE LOG

79-7

HOLE NO. SMG-79-7

HOLE NO. SMG-79-7

LOG BY J.C. Ridley

ELEV. 973 metres

HOLE SIZE HQ 3782 in

PROJECT South Mount Getting

DATE June 19, 1979

Nr. 6,145,220

AIR WATER

LEASE 430

E 537,497

TD 248.72 m.p.d.

SEC T R

REC	DEPTH	STRIP LOG	THICK	SAMPLE NO.	GRAV	LITHOLOGY	ANALYSIS
	0m					Over burden	
60%	0.35m					Coal dull black with shiny bands which are well cleated	
65% 50%	0.27m					Coal black dull shiny bands; Coal moderately shiny - cleated in two directions rhomboidal	
50%	0.27m					Coal black dull at top shinier and well cleated towards bottom	
	0.27m					Coal black banded dull with few vitrain streaks Coal dull with vitrain bands blocky, poorly cleated	
75%	0.05m					Coal dull and bright vitrain bands, calcite veins Coal moderately shiny well cleated	
50%	0.40m					Coal mostly dull slightly shiny, slickensided	
100% 100%	0.79m 0.12m					Coal slightly shiny sheared split 76.66 to 76.72 Coal mostly dull shiny bands	
80%	0.60m					Coal mostly dull, few shiny cleated bands, sheared	
50%	0.68m					Coal mostly dull, few shiny cleated bands sheared	
50%	0.54m					Coal mostly dull, few shiny bands sheared	
50%	1.09m					Coal mostly dull few shiny bands mud bands at 105.94 to 105.98 and 106.22 to 106.30 and 106.92 to 106.98	
	1.20m					Coal dull black, ashy	
	1.30m					Coal moderately shiny, extremely friable and blocky	
27%	0.53m					Coal, mostly dull well indurated	
	1.40m						
77%	0.37m					Coal, muddy, loose, poorly indurated	
70%	0.76m					Coal black dull poorly indurated	
	1.60m						
	1.70m						
	1.80m					Coal dull and bright becoming very bright and well cleated at base of section	
100%	0.57m					Coal dull grading to dull and bright through section	
	1.90m					Coal dull and bright - black - muddy	
	1.90m					Coal black shiny well cleated, friable at top dull and more indurated towards bottom	
	1.90m					Coal black dull with shiny blocky bands	
	2.10m						
	2.20m						
	2.30m						
	2.40m						
						End of Hole @ 248.72 metres	

638

TAH MINES LTD.
GRAPHIC CORE LOG

79-8

HOLE NO. SMG-79-8

HOLE NO. SMG-79-8

LOG BY: A. T. Armstrong

ELEV: 1011 metres

HOLE SIZE: HQ 3.782 in.

PROJECT: South Mount Gething

DATE: June 17, 1979

N: 6,196,770 N

AIR WATER

LEASE: 4130

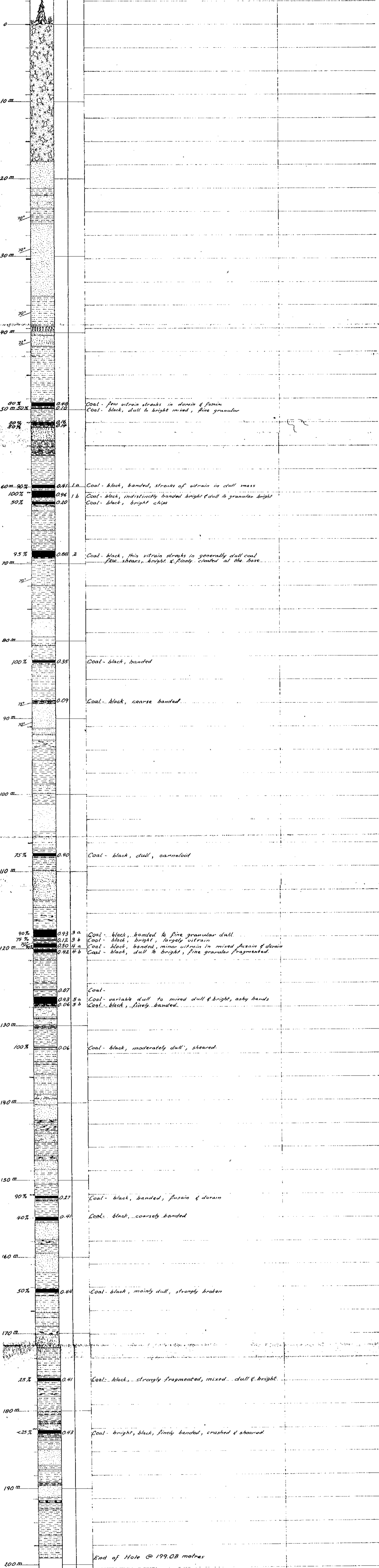
E: 536,595 E

T.D. 199.03 m P.D.

SEC. T. R.

% REC	DEPTH	STRIP LOG	THICK	SAMPLE NO.	GRAY.	LITHOLOGY		ANALYSIS	

638



50 m	80% vitrain, 50% durain	0.48 0.10	Coal - few vitrain streaks in durain & fusain Coal - black, dull to bright mixed, fine granular
50 m	90% vitrain, 50% durain	0.15 0.19	
60 m	90% vitrain	0.41 1a	Coal - black, banded, streaks of vitrain in dull mass
100 m	100% durain	0.96 1b	Coal - black, indistinctly banded bright & dull to granular bright
50 m	50% durain	0.20	Coal - black, bright chips
70 m	95% vitrain	0.68 2	Coal - black, thin vitrain streaks in generally dull coal few shears, bright & finely cleated at the base
80 m	100% vitrain	0.35	Coal - black, banded
90 m	75% vitrain	0.09	Coal - black, coarse banded
110 m	75% vitrain	0.40	Coal - black, dull, canneloid
120 m	90% vitrain, 75% durain	0.93 3a 0.12 3b	Coal - black, banded to fine granular dull Coal - black, bright, largely vitrain
75% durain	0.50 4a	Coal - black, banded, minor vitrain in mixed fusain & durain	
40% durain	0.42 4b	Coal - black, dull to bright, fine granular fragmented	
130 m	0.07	Coal -	
0.93 5a	Coal - variable dull to mixed dull & bright, ashy bands		
0.06 5b	Coal - black, finely banded		
130 m	100% vitrain	0.06	Coal - black, moderately dull, sheared
150 m	90% vitrain	0.27	Coal - black, banded, fusain & durain
40% vitrain	0.41	Coal - black, coarsely banded	
160 m	50% vitrain	0.44	Coal - black, mainly dull, strongly broken
170 m	25% vitrain	0.41	Coal - black, strongly fragmented, mixed dull & bright
180 m	<25% vitrain	0.43	Coal - bright, black, finely banded, crushed & sheared
190 m			End of Hole @ 199.03 metres

GRAPHIC CORE LOG

HOLE NO. SMG-79-9

HOLE NO. SMG-79-9

LOG BY: J.C. Ridley

ELEV: 1098 m

HOLE SIZE: HQ

PROJECT: South Mount Getting

DATE: June 23 1979

N: 6,196,770 m

AIR WATER

LEASE: 435

E: 537,880 m

F.D. 206.65 m.p.d.

SEC. T. R.

% REC	DEPTH	STRIP LOG	THICK	SAMPLE NO.	GRAV.	LITHOLOGY	ANALYSIS
-------	-------	-----------	-------	------------	-------	-----------	----------

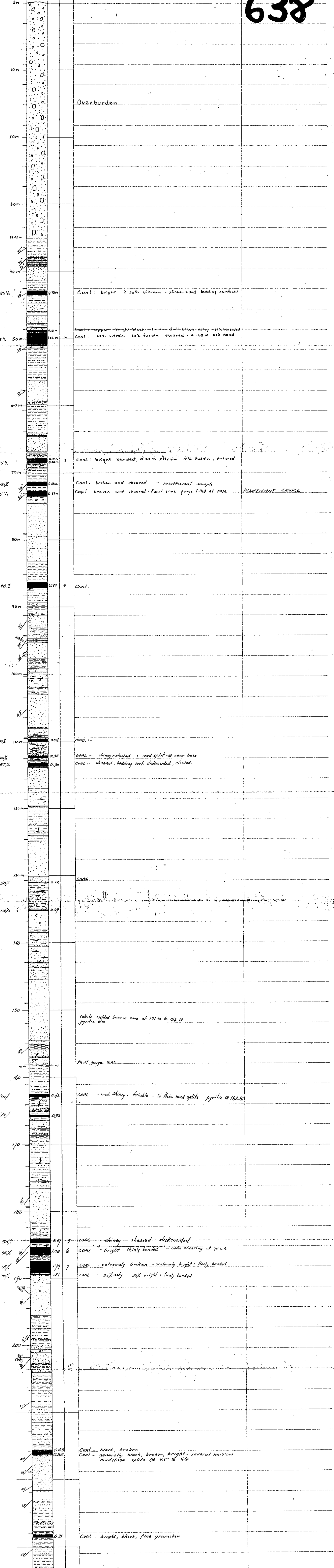
638

	0m					Overburden	
	4.5m						
75%	10m		0.37m			Coal: upper section - dull with bright bands middle - dull with concoidal to blocky fracture lower - bright black strongly cleated	
100%			0.17m			Coal: black, banded, generally very bright	
	20m		0.33m			Coal: brilliant black, finely cleated with numerous dark brownish grey ash bands and lenses	
	30m		0.21m			Coal: black, ashy, canneloid	
	35m		0.30m			Coal: black, banded, dull to bright with a few ashy laminations	
100%	40m		0.49m	1		Coal: bright with dull black bands, often strongly cleated - one narrow black dull ashy band at top	
100%			0.57m	2		Coal: black, predominantly fusain with dull black bands few narrow brilliant vitrain laminations	
60%	50m		0.36m			Coal: black, bright, vitrain and fusain	
100%			0.46m			Coal: black, banded, moderately bright with bright vitrain streaks	
100%	60m		0.77m			Coal: black, bright with a few dull streaks	
	70m						
90%	80m		0.16m			Coal: dull and shiny, cleated where shiny one mud band 79.57 to 79.60	
100%	74%		0.17m			Coal: shiny and cleated in two directions	
	90m		0.41m			Coal: black, shiny, friable	
	100m						
50%			0.15m			Coal: shiny, well cleated, one mud band at top	
100%			0.32m			Coal: moderately shiny, cleated - pyritic band 107.47 to 107.66 very muddy band 107.19 to 107.22	
	110m						
50%			0.92m			Coal: moderately shiny, partially cleated	
95%			0.18m			Coal: moderately shiny, well cleated	
	120m						
	130m						
	140m		0.10m			Coal: black, shiny, sheared	
	150m						
33%			0.38m			Coal: black, dull and shiny, cleated	
100%			0.10m			Coal: dull and sandy, some shiny cleated bands	
100%			0.19m			Coal: moderately dull, shiny cleated bands	
70%	160m		0.36m			Coal: dull and shiny, friable	
26%			0.51m			Muddy Coal: 75% coal several mud bands, coal is flaky and moderately dull	
	170m						
100%			0.48m			Coal: mostly dull, some shiny and cleated, mudstone split	
	180m		0.17m			Coal: mostly shiny and cleated, sheared	
100%			0.28m			Coal: shiny, cleated	
	190m						
	200m						
						End of Hole 206.65 metres	

HOLE NO. SMG-79-10
 LOG BY: J.C. RIDLEY
 DATE: June 26 1979
 ELEV: 945 m
 N: 6,200,835 m
 E: 535,850
 HOLE SIZE: H.D.
 AIR WATER
 T.D. P.D.
 PROJECT: South Mount Getting
 C.L. LEASE: 7142
 SEC. T. R.

% REC	DEPTH	STRIP LOG	THICK	SAMPLE NO.	GRAV.	LITHOLOGY	ANALYSIS
-------	-------	-----------	-------	------------	-------	-----------	----------

638



E.O.H. @ 233+0m

638

79-4

PR. SOUTH MT GETTING 79(3)A

Widco WELL LOG

COMPANY Utah Mines Ltd.
 AREA South Mount Getting
 WELL SMG-79-4
 COUNTY _____ STATE B.C.

COORDINATES: 6,204,135N
542,115E
 ELEVATION: 781 m.
 D.F. _____
 K.B. _____
 G.I. _____

COMPANY Utah Mines Ltd.
 WELL SMG-79-4
 LOCATION South Mt. Getting

Date	Run No. 1	Run No. 2	MUD	Run No. 1	Run No. 2
	May 21, 1979				Nature
First Reading	214.25m		Density		
Last Reading	0 m		Viscosity	@ of	@ of
Footage Logged	214.25m		Resistivity	@ of	@ of
Bottom (Driller)	222.28m		Res. @ BHT	@ of	@ of
Casing (From Log)			pH		
Casing (Driller)	7.32m		Circ. Temp.		
Casing Size	HW 4.5 in.		B.H. Temp.		
Bit Size:	HQ 3.782 in.				
Bit Size:					

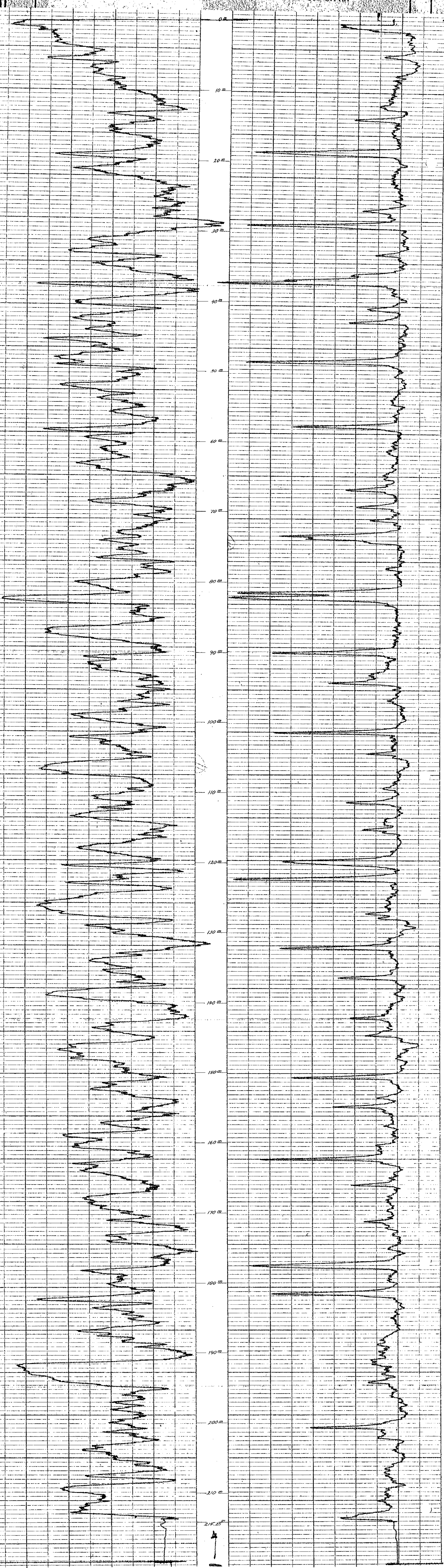
Logged by R.B. Anderson
 Witnessed by N. Duncan

REMARKS

* Reg. U.S. Pat. Off.

Gamma 1000 C.P.S.

Density 500 C.P.S.



FO-139

638

19-5

PR-SOUTH MT GETTING 79(3)A

Widco WELL LOG

COMPANY Utah Mines
 WELL S.M.G. 79-5
 LOCATION South Mt. Getting

COMPANY Utah Mines Ltd.
 AREA South Mount Getting
 WELL S.M.G. 79-5
 COUNTY STATE R.C.

COORDINATES: 541,260E
 N 6,204,940N
 S
 ELEVATION: 920m
 D.F.
 K.B.
 G.I.

	Run No. 1	Run No. 2	MUD	Run No. 1	Run No. 2
Date	May 26, 1979		Nature		
First Reading	187.45m		Density		
Last Reading	0		Viscosity	@ °F	@ °F
Footage Logged	187.45m		Resistivity	@ °F	@ °F
Bottom (Driller)	188.98m		Res. @ BHT	@ °F	@ °F
Casing (From Log)			pH		
Casing (Driller)	6.70m		Circ. Temp.		
Casing Size	HW 4.5 in.		B.H. Temp.		
Bit Size	HQ 3.782 in.				
Bit Size					
			Logged by	N. Duncan	
			Witnessed by	P. Zell & P. Cowley	

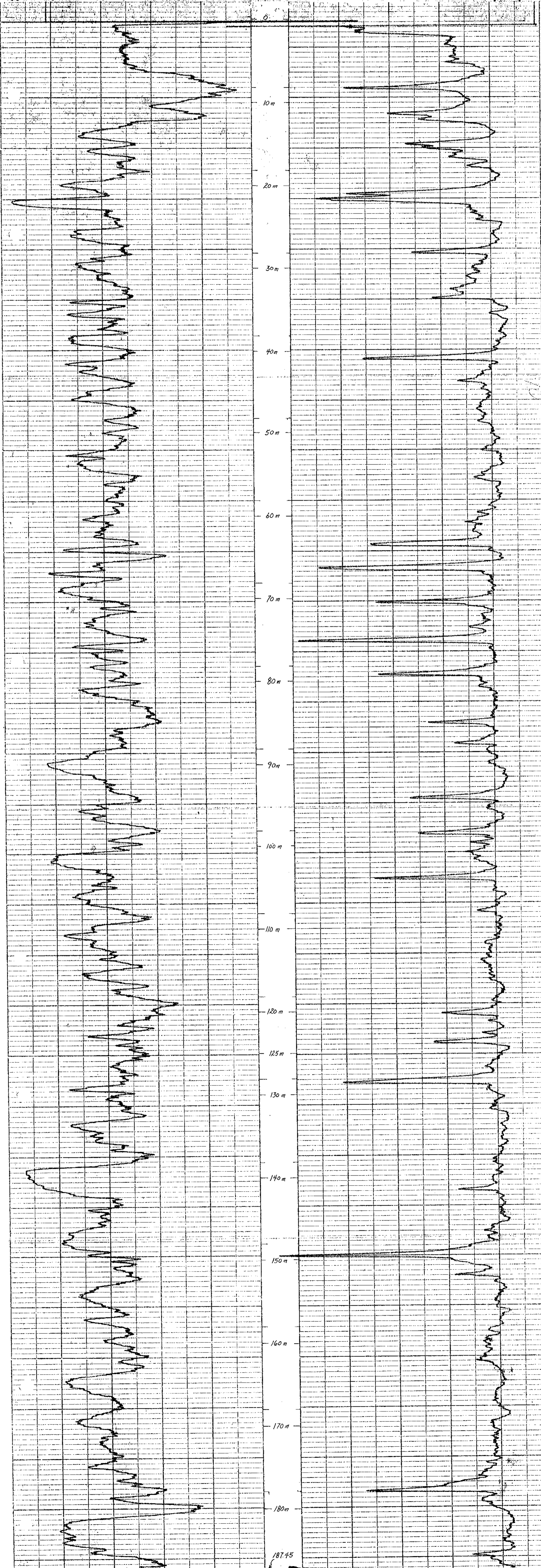
REMARKS

* Reg. U.S. Pat. Off.

FO-139

Gamma
 1000 C.P.S.

Density
 500 C.P.S.



638

79-6

PR-SOUTH MT GETTING 79(3) D

Widco ^{*} WELL LOG

COMPANY UTAH MINES LTD.

AREA SOUTH MOUNT GETTING

WELL SMC-79-6

COUNTY STATE Province: British Columbia

COORDINATES: 540,428 E

N 6,203,950 N

S ELEVATION: 834m

D.F.

K.B.

G.L.

COMPANY UTAH MINES LTD.
WELL SMC-79-6
LOCATION SOUTH MOUNT GETTING

	Run No. 1	Run No. 2	MUD	Run No. 1	Run No. 2
Date	May 31, 1979		Nature		
First Reading	192.02m		Density		
Last Reading	0.00m		Viscosity	@ °F	@ °F
Footage Logged	192.02m		Resistivity	@ °F	@ °F
Bottom (Driller)	193.85m		Res. @ BHT	@ °F	@ °F
Casing (From Log)	16.10m		pH		
Casing (Driller)	17.37m		Circ. Temp.		
Casing Size	HW-114.3mm O.D.		B.H. Temp.		
Bit Size	HQ-96mm O.D.				
			Logged by	N. Duncan	
			Witnessed by	P. Zell	

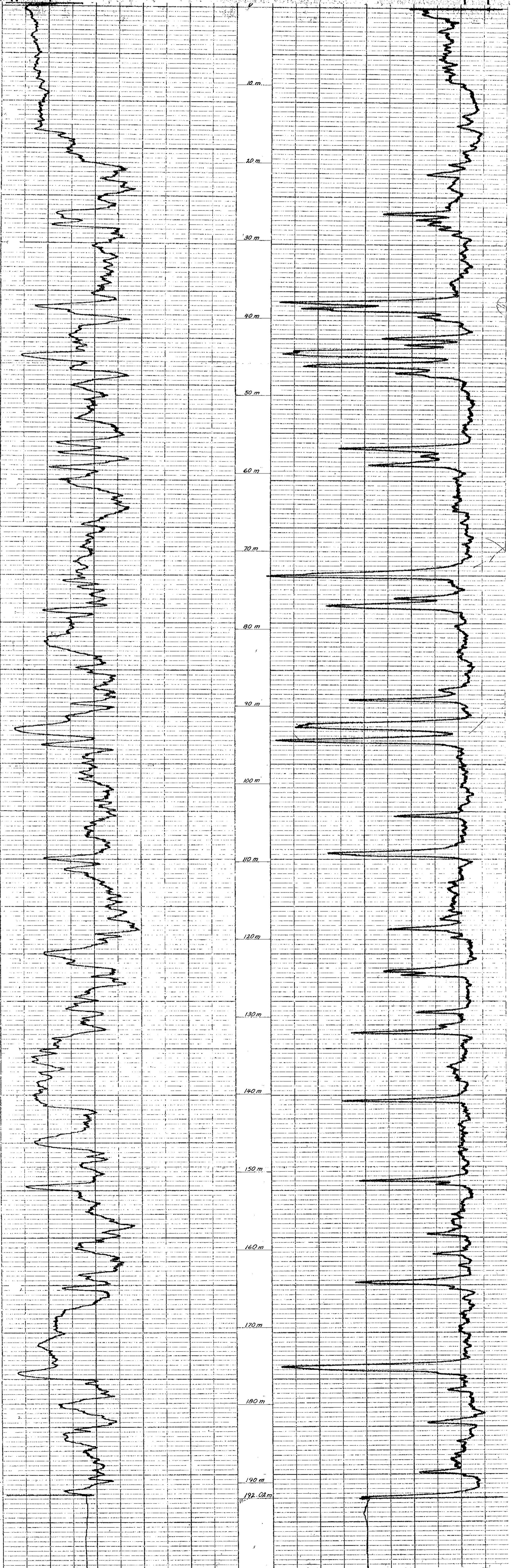
REMARKS

* Reg. U.S. Pat. Off.

Gamma
500 C.P.S.
TC = 5

Density
500 C.P.S.
TC = 3

FO-138



638

79-7

PR-SOUTH MT GETHING 79(3)A

Widco WELL LOG

COMPANY UTAH MINES LTD.

AREA SOUTH MOUNT GETHING

WELL SMG-79-7

COUNTY ~~STATE~~ Province: British Columbia

COORDINATES: 537,497 E

N 6,195,220 N

S ELEVATION: 973m

D.F. _____
K.B. _____
G.I. _____

COMPANY UTAH MINES LTD.
WELL SMG-79-7
LOCATION SOUTH MOUNT GETHING

	Run No. 1	Run No. 2	MUD	Run No. 1	Run No. 2
Date	June 9, 1979				
First Reading	247.65m		Nature		
Last Reading	1.10m (density log)		Density		
Footage Logged	246.55m		Viscosity	@ of	@ of
Bottom (Driller)	248.72m		Resistivity	@ of	@ of
Casing (From Log)	16.5m		Res. @ BHT	@ of	@ of
Casing (Driller)	16.46m		pH		
Casing Size	HW-114.3mm O.D.		Circ. Temp.		
Bit Size	HQ-96mm O.D.		B.H. Temp.		
Bit Size			Logged by		
			Witnessed by		

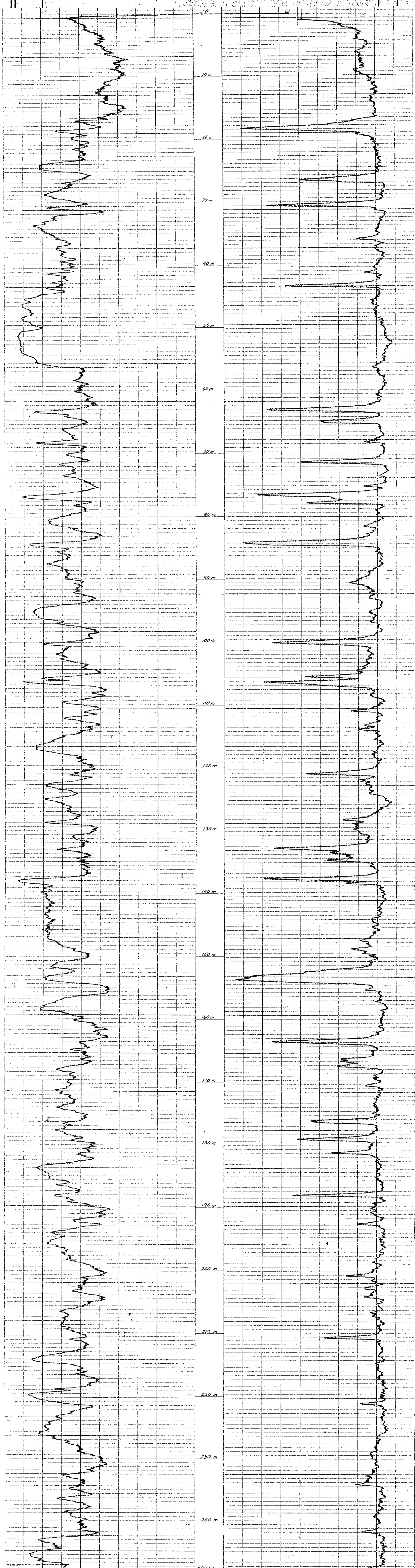
REMARKS

* Reg. U.S. Pat. Off.

Gamma
500 C.P.S.
TC = 5

Density
500 C.P.S.
TC = 3

FO-139



638

79-8

PR-SOUTH MT GETHING 79(3)A

Widco

WELL LOG

COMPANY UTAH MINES LTD.
 AREA SOUTH MOUNT GETHING
 WELL SMG-79-8
 COUNTY STATE Province: B. C.

COORDINATES: 536,595m E
 N 6,196,770m N
 S
 ELEVATION: 1011 metres
 D.F.
 K.B.
 G.I.

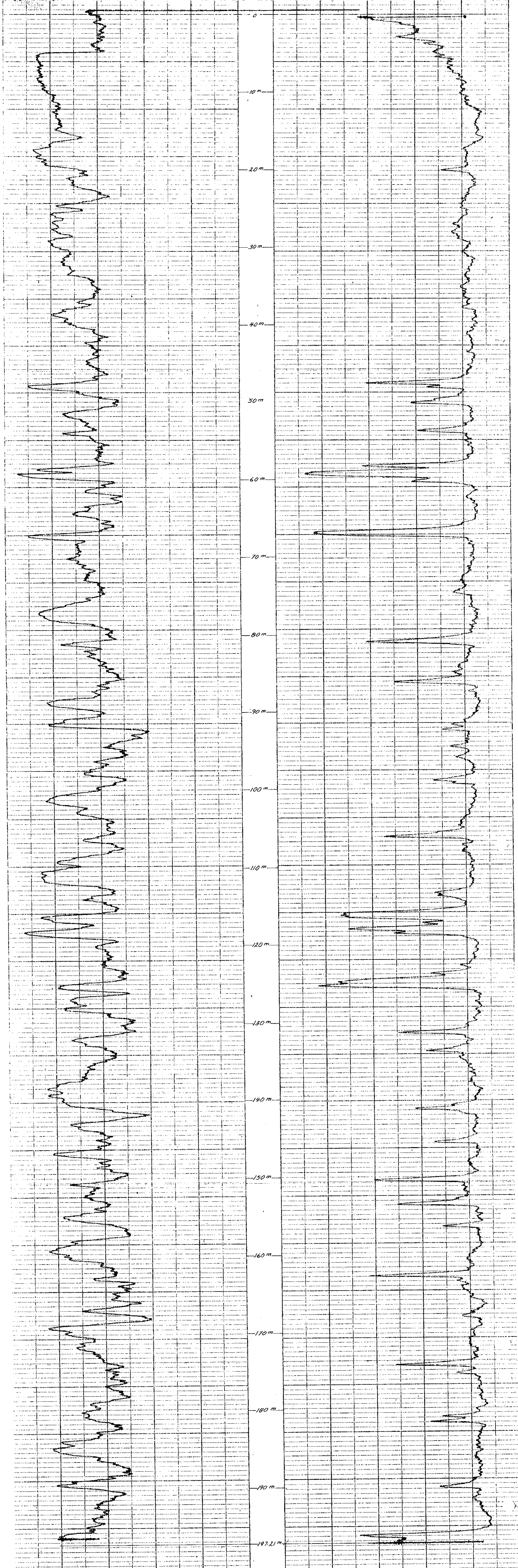
COMPANY UTAH MINES LTD.
 WELL SMG-79-8
 LOCATION SOUTH MOUNT GETHING

	Run No. 1	Run No. 2	MUD	Run No. 1	Run No. 2
Date	June 15, 1979		Nature		
First Reading	197.21m		Density		
Last Reading	0.00m		Viscosity	@ °F	@ °F
Footage Logged	197.21m		Resistivity	@ °F	@ °F
Bottom (Driller)	199.03m		Res. @ BHT	@ °F	@ °F
Casing (From Log)			pH		
Casing (Driller)	17.68m		Circ. Temp.		
Casing Size	JH-114.3mm		B.H. Temp.		
Bit Size:	HQ-96mm				
			Logged by	K. Broadbent	
			Witnessed by	N. Duncan	

REMARKS

Gamma 500 C.P.S. TC = 5
 Density 500 C.P.S. TC = 3

Gearthart-Owen Widco Logger Model No. 06-3200-86



638

799

PR- SOUTH MT GETHINE 79(3)A

Widco WELL LOG

COMPANY UTAH MINES LTD.
WELL SMC-79-9
LOCATION SOUTH MOUNT GETHINE

COMPANY UTAH MINES LTD.
AREA DOWLING CREEK, B. C.
WELL SMC-79-9
COUNTY STATE Province: B. C.

COORDINATES:
N 6,196,770m N
S 537,880m E
ELEVATION: 1098m
D.F.
K.B.
G.L.

	Run No. 1	Run No. 2	MUD	Run No. 1	Run No. 2
Date	June 21, 1979		Nature		
First Reading	205.6m		Density		
Last Reading	0		Viscosity	@ of	@ of
Footage Logged	205.6m		Resistivity	@ of	@ of
Bottom (Driller)	206.65m		Res. @ BHF	@ of	@ of
Casing (From Log)			pH		
Casing (Driller)	5.8m		Circ. Temp.		
Casing Size	HW-114.3mm		B.H. Temp.		
Bit Size:	HW-96.0mm				
Bit Size:			Logged by	K. Breadbent	
			Witnessed by	N. Duncan & R.B. Anderson	

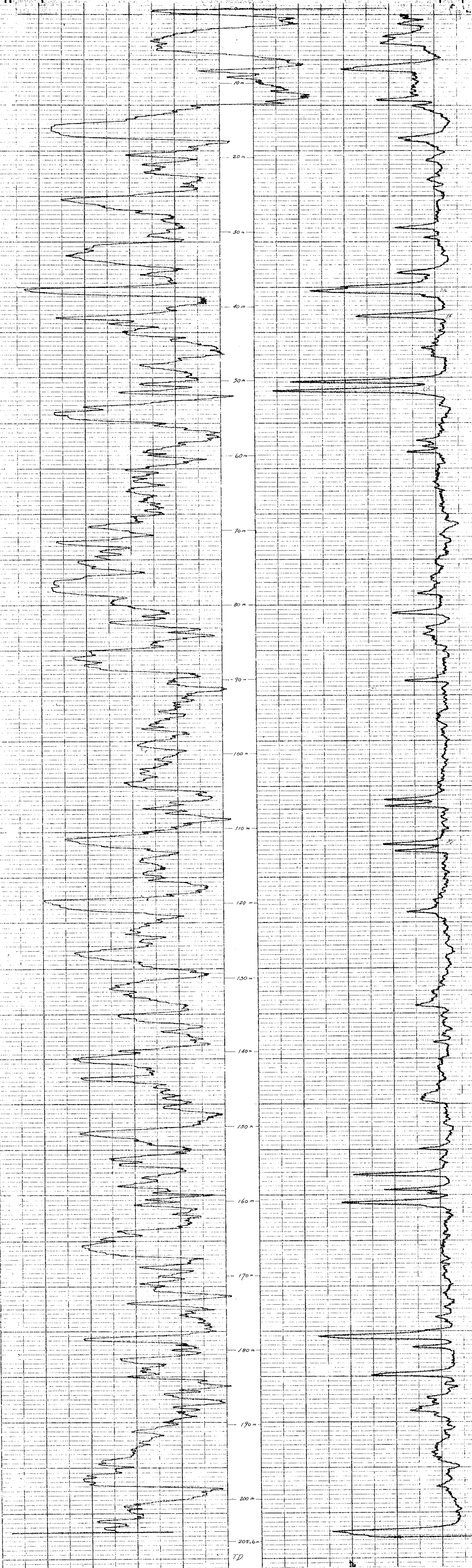
REMARKS

* Reg. U.S. Pat. Off.

Gamma
500 C.P.S.
TC = 5

Density
500 C.P.S.
TC = 3

Co 139



638

79-10

PR-SOUTH MT GETTING 79(3)A

Widco*

WELL LOG

COMPANY UTAH MINES LTD.
 AREA SOUTH MOUNT GETTING
 WELL SMG-79-10
 COUNTY STATE Province: B. C.

COORDINATES:
 N 5,200,835m N X
 S 534,850m E
 ELEVATION: 945m
 D.F.
 K.B.
 G.L.

COMPANY UTAH MINES LTD.
 WELL SMG-79-10
 LOCATION 6,200,835m N X
 534,850m E
 SOUTH MOUNT GETTING

	Run No. 1	Run No. 2	MUD	Run No. 1	Run No. 2
Date	June 29, 1979				
First Reading	231.65m		Nature		
Last Reading	0.00m		Density		
Footage Logged	231.65m		Viscosity	@ °F	@ °F
Bottom (Driller)	233.48m		Res. @ BHT	@ °F	@ °F
Casing (From Log)			pH		
Casing (Driller)	35.97m		Circ. Temp.		
Casing Size	HW-114.3mm O.D.		B.H. Temp.		
Bit Size	HQ-96mm O.D.				
			Logged by	Kim Broadbent	
			Witnessed by	N. Duncan	

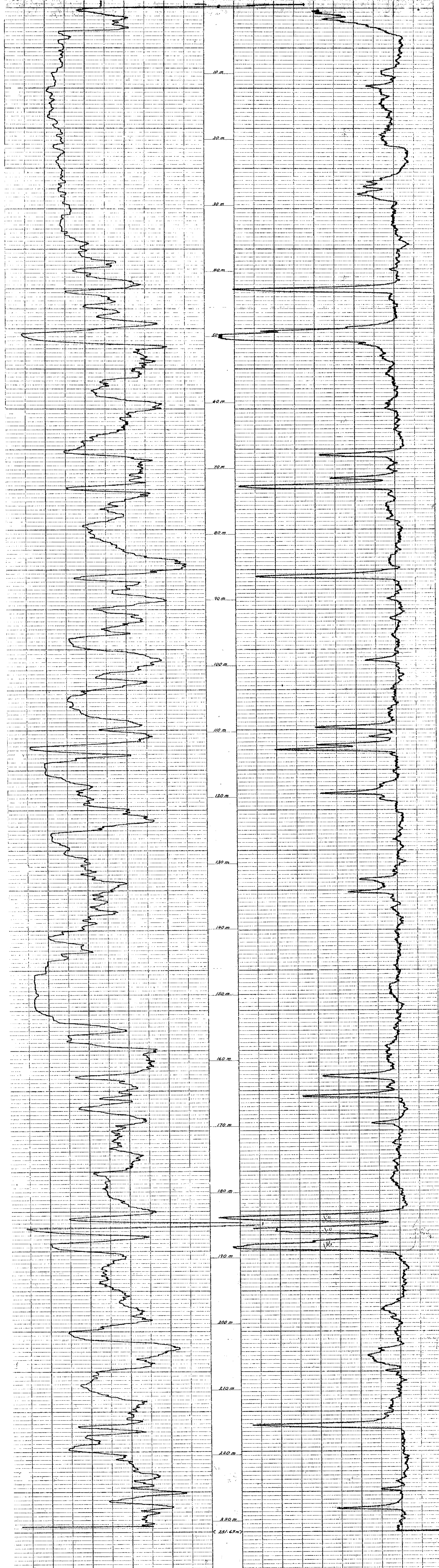
REMARKS

* Reg. U.S. Pat. Off.

Gamma
 500 C.P.S.
 TC = 5

Density
 500 C.P.S.
 TC = 3

FO-129



~~CONFIDENTIAL~~

APPENDIX II

ANALYTICAL DATA FOR
D.D.H. SMG-79-4, SMG-79-5, SMG-79-6
SMG-79-7, SMG-79-8, SMG-79-9
AND SMG-79-10

South Mount Mething

Hole SMG-79-4

Head Analysis

Sample No.	Depth	No. of Meters	Grams Rec'd	Air Dry Basis							Moisture Free Basis				
				% H ₂ O	% Ash	% S	% VM	% FC	Btu	FSI	% Ash	% S	% VM	% FC	Btu
1	18.92-19.45	0.53	2087	1.14	10.31	0.85	21.30	67.25	13540	1 1/2	10.43	0.86	21.54	68.03	13696
2A	36.80-36.97	0.17	535	0.94	2.70	0.84	20.00	76.36	14745	1	2.73	0.85	20.19	77.08	14885
2B	37.15-37.64	0.49	1122	1.39	4.41	0.96	21.90	72.30	14455	2 1/2	4.47	0.97	22.21	73.32	14659
3A	81.81-82.20	0.39	1381	1.20	10.8	0.67	17.0	71.00	13445	0	10.93	0.68	17.21	71.86	13608
3B	82.36-83.25	0.89	2847	0.78	22.81	0.66	17.4	59.01	11150	0	22.99	0.67	17.54	59.47	11238
3AB	81.81-83.25	1.44	5366	1.19	26.18	0.55	22.89	49.74	9899	0	26.50	0.56	23.17	50.33	10018

Structure

Sample 3AB		
Size	% Weight	Cum. % Weight
+1/4"	40.15	40.15
+6 m	31.23	71.38
+10 m	12.39	83.77
+28 m	8.89	92.66
-28 m	7.34	100.00
<u>Total</u>	100.00	

South Mount Gething
Hole SMG-79-4
Single Gravity Tests

		<u>Moisture Free Basis</u>										
<u>Product and Sp. Gr.</u>	<u>% Weight</u>	<u>Elementary Data</u>					<u>% Distribution</u>					
		<u>FSI</u>	<u>% Ash</u>	<u>% S</u>	<u>% VM</u>	<u>% FC</u>	<u>Btu</u>	<u>Ash</u>	<u>S</u>	<u>VM</u>	<u>FC</u>	<u>Btu</u>
<u>Sample #1 3/8" x 0</u>												
1.400 F	85.91	2	4.76	0.94	22.27	72.97	14673	40.62	91.30	88.55	91.75	91.77
1.400 S	14.09	1/2	42.42	0.55	17.56	40.02	8027	59.38	8.70	11.45	8.25	8.23
<u>Total</u>	100.00		10.07	0.89	21.61	68.32	13737	100.00	100.00	100.00	100.00	100.00
<u>Sample #2A 3/8" x 0</u>												
1.400 F	99.08	1/2	2.63	0.88	19.02	78.35	14966	100.00	100.00	100.00	100.00	100.00
1.400 S	0.92											
<u>Total</u>	100.00		2.63	0.85	19.02	78.35	14966	100.00	100.00	100.00	100.00	100.00
<u>Sample #2B 3/8" x 0</u>												
1.400 F	95.53	2 1/2	1.93	0.98	22.01	76.06	15127	43.24	96.59	96.15	98.37	98.15
1.400 S	4.47	0	54.15	0.73	18.86	26.99	6110	56.76	3.41	3.85	1.63	1.85
<u>Total</u>	100.00		4.27	0.97	21.87	73.86	14724	100.00	100.00	100.00	100.00	100.00
<u>Sample #3A 3/8" x 0</u>												
1.400 F	76.04	0	3.14	0.74	17.32	79.54	14862	22.79	80.20	79.06	83.01	82.66
1.400 S	23.96	0	33.77	0.58	14.56	51.67	9892	77.21	19.80	20.94	16.99	17.34
<u>Total</u>	100.00		10.48	0.70	16.66	72.86	13671	100.00	100.00	100.00	100.00	100.00

South Mount Gething
Hole SMG-79-4
Single Gravity Tests

Moisture Free Basis

Product and Sp. Gr.	% Weight	Elementary Data					% Distribution					
		<u>FSI</u>	<u>% Ash</u>	<u>% S</u>	<u>% VM</u>	<u>% FC</u>	<u>Btu</u>	<u>Ash</u>	<u>S</u>	<u>VM</u>	<u>FC</u>	<u>Btu</u>
<u>Sample #3B 3/8" x 0</u>												
1.400 F	63.60	0	3.14	0.73	18.91	77.95	14738	9.04	67.64	68.82	82.03	82.81
1.400 S	36.40	0	55.19	0.61	14.97	29.84	5344	90.96	32.36	31.18	17.97	17.19
<u>Total</u>	100.00		22.09	0.69	17.48	60.43	11318	100.00	100.00	100.00	100.00	100.00
<u>Sample #3AB 3/8" x 0</u>												
1.400 F	51.23	0	3.36	0.72	18.56	78.08	14665	6.53	65.43	40.02	80.21	75.61
1.400 S	48.77	0	50.55	0.40	29.22	20.23	4969	93.47	34.57	59.98	19.79	24.39
<u>Total</u>	100.00		26.37	0.56	23.76	49.87	9936	100.00	100.00	100.00	100.00	100.00

South Mount Gething

Hole SMG-79-4

Sample #3AB

81.81-83.25 Meters

Washability Test

Moisture Free Basis

Product and Sp. Gr.	% Weight	Elementary Data						Cumulative Data					
		FSI	% Ash	% S	% VM	% FC	Btu	% Weight	% Ash	% S	% VM	% FC	Btu
<u>Minus 3/8" x 28 m Fraction</u>													
1.300 F	6.71	0	1.83	0.76	18.32	79.85	15073	6.71	1.83	0.76	18.32	79.85	15073
1.350 F	38.58	0	2.86	0.72	17.68	79.46	14902	45.29	2.71	0.73	17.77	79.52	14926
1.400 F	7.50	0	7.29	0.72	20.54	72.17	14062	52.79	3.36	0.73	18.17	78.47	14804
1.450 F	2.59	0	12.56	0.71	23.54	63.90	12968	55.28	3.79	0.72	18.42	77.79	14718
1.500 F	1.52	0	16.30	0.67	25.80	57.90	12054	56.90	4.12	0.72	18.62	77.26	14647
1.550 F	1.08	0	21.62	0.62	24.19	54.19	11258	57.98	4.45	0.72	18.72	76.83	14584
1.600 F	2.80	0	29.61	0.55	19.77	50.62	10255	60.78	5.61	0.71	18.77	75.62	14385
1.600 S	39.22	0	59.21	0.28	29.62	11.17	3029	100.00	26.63	0.54	23.03	50.34	9931
<u>Total</u>	100.00		26.63	0.54	23.03	50.34	9931						

Flotation Test on -28m Fraction

Product	% Weight	Elementary Data						% Distribution				
		FSI	% Ash	% S	% VM	% FC	Btu	Ash	S	VM	FC	Btu
Conc. I	46.23	0	10.40	0.71	20.37	69.23	13357	16.75	57.95	38.06	68.75	65.08
Conc. II	21.64	0	26.21	0.67	23.04	50.75	10529	19.76	25.62	20.15	23.59	24.01
Rejects	32.13	0	56.72	0.29	32.18	11.10	3224	63.49	16.43	41.79	7.66	10.91
<u>Total</u>	100.00		28.70	0.57	24.74	46.56	9489	100.00	100.00	100.00	100.00	100.00

South Mount Getting

Hole SMG-79-5

Head Analysis

<u>Sample No.</u>	<u>Depth</u>	<u>No. of Meters</u>	<u>Grams Rec'd</u>	<u>Air Dry Basis</u>							<u>Moisture Free Basis</u>				
				<u>% H₂O</u>	<u>% Ash</u>	<u>% S</u>	<u>% VM</u>	<u>% FC</u>	<u>Btu</u>	<u>FSI</u>	<u>% Ash</u>	<u>% S</u>	<u>% VM</u>	<u>% FC</u>	<u>Btu</u>
1A	20.64-20.87	0.23	850	1.30	4.00	0.82	18.50	76.20	14412	0	4.05	0.83	18.74	77.21	14602
1B	21.16-21.75	0.59	2988	0.70	14.05	0.87	23.90	61.35	12207	0	14.15	0.88	24.07	61.78	12293
1AB	20.64-21.75	1.11	4663	1.18	18.10	0.77	26.70	54.02	11009	0	18.32	0.78	27.02	54.66	11140
2A	63.05-63.28	0.23	802	0.77	29.4	0.96	22.10	47.73	10011	1	29.63	0.97	22.27	48.10	10089
2B	63.36-63.90	1.21	497	1.21	4.21	0.91	21.30	73.28	14569	3	4.26	0.92	21.56	74.18	14747

Structure

<u>Size</u>	<u>Sample #1AB</u>	
	<u>% Weight</u>	<u>Cum. % Weight</u>
1/4"	34.34	34.34
+6 m	25.70	60.04
+10 m	14.87	74.91
+28 m	14.36	89.27
-28 m	10.73	100.00
<u>Total</u>	100.00	

South Mount Gething

Hole SMG-79-5

Single Gravity Tests

Moisture Free Basis

<u>Product and Sp. Gr.</u>	<u>% Weight</u>	<u>Elementary Data</u>						<u>% Distribution</u>				
		<u>FSI</u>	<u>% Ash</u>	<u>% S</u>	<u>% VM</u>	<u>% FC</u>	<u>Btu</u>	<u>Ash</u>	<u>S</u>	<u>VM</u>	<u>FC</u>	<u>Btu</u>
<u>Sample #1A 3/8" x 0</u>												
1.400 F	90.95	0	2.84	0.78	17.90	79.26	14876	61.01	85.84	88.44	93.19	92.35
1.400 S	9.05	0	18.24	1.29	23.51	58.25	12383	38.99	14.16	11.56	6.81	7.65
<u>Total</u>	100.00		4.23	0.83	18.41	77.36	14651	100.00	100.00	100.00	100.00	100.00
<u>Sample #1B 3/8" x 0</u>												
1.400 F	63.27	0	5.47	0.90	19.99	74.54	14319	23.26	61.98	50.53	78.48	74.29
1.400 S	36.73	0	31.09	0.75	33.72	35.19	8537	76.74	38.02	49.47	21.52	25.71
<u>Total</u>	100.00		14.88	0.92	25.03	60.09	12196	100.00	100.00	100.00	100.00	100.00
<u>Sample #1AB 3/8" x 0</u>												
1.400 F	58.06	0	4.65	0.84	19.80	75.55	14415	14.45	63.13	42.35	80.70	75.92
1.400 S	41.94	0	38.11	0.68	36.88	25.01	6329	85.55	36.87	57.65	19.30	24.08
<u>Total</u>	100.00		18.68	0.77	26.96	54.36	11023	100.00	100.00	100.00	100.00	100.00
<u>Sample #2A 3/8" x 0</u>												
1.400 F	41.73	2	4.45	1.01	22.12	73.43	14760	6.18	43.18	40.48	65.00	61.62
1.400 S	58.27	1/2	48.39	0.95	23.29	28.32	6584	93.82	56.82	59.52	35.00	38.38
<u>Total</u>	100.00		30.05	0.98	22.80	47.15	9995	100.00	100.00	100.00	100.00	100.00

South Mount Gething
Hole SMG-79-5
Single Gravity Tests

		<u>Moisture Free Basis</u>										
Product and Sp. Gr.	% Weight	<u>Elementary Data</u>						<u>% Distribution</u>				
		<u>FSI</u>	<u>% Ash</u>	<u>% S</u>	<u>% VM</u>	<u>% FC</u>	<u>Btu</u>	<u>Ash</u>	<u>S</u>	<u>VM</u>	<u>FC</u>	<u>Btu</u>
<u>Sample #2B 3/8" x 0</u>												
1.400 F	97.41	0	4.07	0.95	22.02	73.91	14814	100.00	100.00	100.00	100.00	100.00
1.400 S	2.59											
<u>Total</u>	100.00		4.07	0.95	22.02	73.91	14814	100.00	100.00	100.00	100.00	100.00

South Mount Getning

Hole SMG-79-5

Sample #1AB

20.64-21.75 Meters

Washability Test

Product and Sp. Gr.	% Weight	Elementary Data						Moisture Free Basis Cumulative Data					
		FSI	% Ash	% S	% VM	% FC	Btu	% Weight	% Ash	% S	% VM	% FC	Btu
<u>Minus 3/8" x 28 m Fraction</u>													
1.300 F	5.02	0	1.95	0.76	20.08	77.97	14920	5.02	1.95	0.76	20.08	77.97	14920
1.350 F	33.39	0	2.91	0.84	19.64	77.45	14780	38.41	2.79	0.83	19.70	77.51	14798
1.400 F	20.00	0	7.68	0.90	21.16	71.16	13713	58.41	4.46	0.85	20.20	75.34	14427
1.450 F	10.55	0	11.83	0.90	23.73	64.44	12846	68.96	5.59	0.86	20.74	73.67	14185
1.500 F	4.38	0	15.74	0.96	25.80	58.46	12154	73.34	6.19	0.87	21.04	72.77	14063
1.550 F	1.83	0	19.17	0.95	26.15	54.68	11377	75.17	6.51	0.87	21.17	72.32	13998
1.600 F	0.84	0	21.34	1.09	29.60	49.06	10799	76.01	6.67	0.87	21.26	72.07	13963
1.600 S	23.99	0	51.86	0.44	45.17	2.97	2381	100.00	17.51	0.77	27.00	55.49	11184
<u>Total</u>	100.00		17.51	0.77	27.00	55.49	11184						

Flotation Test on -28m Fraction

Product	% Weight	Elementary Data						% Distribution				
		FSI	% Ash	% S	% VM	% FC	Btu	Ash	S	VM	FC	Btu
Conc. I	39.40	0	12.57	0.79	23.61	63.82	12670	15.98	53.34	28.82	68.46	62.15
Conc. II	25.06	0	27.10	0.72	30.18	42.72	9150	21.91	30.87	23.43	29.15	28.55
Rejects	35.54	0	54.16	0.26	43.36	2.48	2101	62.11	15.79	47.75	2.39	9.30
<u>Total</u>	100.00		30.99	0.58	32.28	36.73	8032	100.00	100.00	100.00	100.00	100.00

South Mount Getting

Hole SMG 79-6

Head Analysis

Sample No.	Depth	No. of Meters	Air Dry Basis								Moisture Free Basis				
			Grams Rec'd	% H ₂ O	% Ash	% S	% VM	% FC	Btu	FSI	% Ash	% S	% VM	% FC	Btu
1A	38.40-39.20	0.80	1912	1.88	4.17	0.95	22.50	71.45	14422	1 1/2	4.25	0.97	22.93	72.82	14698
1AB	38.40-39.52	1.52	3092	1.03	28.20	0.71	18.90	51.57	10769	1	28.49	0.72	19.10	52.41	10881
2	92.73-94.07	1.34	3086	1.84	1.79	0.81	21.49	74.88	14518	1 1/2	1.82	0.83	21.89	76.29	14790
3	94.97-95.97	1.00	2206	1.98	2.57	0.73	19.20	76.25	14600	1	2.62	0.74	19.59	77.79	14895
4	109.40-110.10	0.70	986	1.13	11.57	0.74	20.12	67.18	13296	1	11.70	0.75	20.35	67.95	13448
5	175.57-176.53	0.96	3037	1.77	3.02	0.75	18.02	77.19	14573	0	3.07	0.76	18.34	78.59	14836

Structures

Size	Sample #1AB		Sample #2		Sample #3		Sample #5	
	% Weight	Cum. % Weight	% Weight	Cum. % Weight	% Weight	Cum. % Weight	% Weight	Cum. % Weight
1/4"	31.16	31.16	40.00	40.00	46.85	46.85	43.00	43.00
+6 m	37.42	68.58	27.65	67.65	24.07	70.92	29.15	72.15
+10 m	18.44	87.02	13.84	81.49	12.45	83.37	12.18	84.33
+28 m	7.08	94.10	10.51	92.00	9.40	92.77	8.36	92.69
-28 m	5.90	100.00	8.00	100.00	7.23	100.00	7.31	100.00
<u>Total</u>	100.00		100.00		100.00		100.00	

South Mount Gething

Hole SMG-79-6

Single Gravity Tests

Moisture Free Basis

<u>Product and Sp. Gr.</u>	<u>% Weight</u>	<u>Elementary Data</u>						<u>% Distribution</u>				
		<u>FSI</u>	<u>% Ash</u>	<u>% S</u>	<u>% VM</u>	<u>% FC</u>	<u>Btu</u>	<u>Ash</u>	<u>S</u>	<u>VM</u>	<u>FC</u>	<u>Btu</u>
<u>Sample #1A 3/8" x 0</u>												
1.400 F	94.04	3	2.36	0.98	23.96	73.68	15061	49.63	93.23	95.37	96.36	96.20
1.400 S	5.96	1/2	37.78	1.13	18.34	43.88	9393	50.37	6.77	4.63	3.64	3.80
<u>Total</u>	100.00		4.47	0.99	23.63	71.90	14723	100.00	100.00	100.00	100.00	100.00
<u>sample #1AB 3/8" x 0</u>												
1.400 F	61.02	3	2.63	1.00	23.41	73.96	15017	5.50	80.05	81.36	84.77	84.38
1.400 S	38.98	0	70.79	0.39	8.40	20.81	4355	94.50	19.95	18.64	15.23	15.62
<u>Total</u>	100.00		29.20	0.76	17.56	53.24	10861	100.00	100.00	100.00	100.00	100.00
<u>Sample #2 3/8" x 0</u>												
1.400 F	99.01	1/2	1.89	0.81	20.63	77.48	14778	100.00	100.00	100.00	100.00	100.00
1.400 S	0.99											
<u>Total</u>	100.00		1.89	0.81	20.63	77.48	14778	100.00	100.00	100.00	100.00	100.00
<u>Sample #3 3/8" x 0</u>												
1.400 F	97.80	1/2	2.21	0.72	20.09	77.70	15062	78.78	96.04	98.26	98.36	98.69
1.400 S	2.20	0	26.47	1.33	15.84	57.69	8843	21.22	3.96	1.74	1.64	1.31
<u>Total</u>	100.00		2.74	0.73	20.00	77.26	14926	100.00	100.00	100.00	100.00	100.00

South Mount Gething
Hole SMG 79-6
Single Gravity Tests

Moisture Free Basis

Product and Sp. Gr.	% Weight	Elementary Data						% Distribution				
		<u>FSI</u>	<u>% Ash</u>	<u>% S</u>	<u>% VM</u>	<u>% FC</u>	<u>Btu</u>	<u>Ash</u>	<u>S</u>	<u>VM</u>	<u>FC</u>	<u>Btu</u>
<u>Sample #4 3/8" x 0</u>												
1.400 F	81.47	1	4.86	0.82	21.23	73.91	14692	35.21	86.75	83.64	88.45	88.25
1.400 S	18.53	1/2	39.31	0.55	18.26	42.43	8598	64.79	13.25	16.36	11.55	11.75
<u>Total</u>	100.00		11.24	0.77	20.68	68.08	13563	100.00	100.00	100.00	100.00	100.00
<u>Sample #5 3/8" x 0</u>												
1.400 F	96.43	0	2.14	0.74	19.43	78.43	14848	70.93	95.71	95.76	97.56	97.46
1.400 S	3.57	0	23.69	0.89	23.23	53.08	10444	29.07	4.29	4.24	2.44	2.54
<u>Total</u>	100.00		2.91	0.75	19.57	77.52	14691	100.00	100.00	100.00	100.00	100.00

South Mount Gething

Hole SMG 79-6

Sample #1AB

38.40-39.52 Meters

Washability Test

Product and Sp. Gr.	% Weight	Elementary Data						Moisture Free Basis					
		FSI	% Ash	% S	% VM	% FC	Btu	% Weight	% Ash	% S	% VM	% FC	Btu
<u>Minus 3/8" x 28m Fraction</u>													
1.300 F	45.66	4	1.65	1.03	24.33	74.02	15063	45.66	1.65	1.03	24.33	74.02	15063
1.350 F	15.00	4	3.71	0.86	22.78	73.51	14694	60.66	2.16	0.99	23.95	73.89	14972
1.400 F	1.95	4	13.04	0.91	22.75	64.21	13148	62.61	2.50	0.99	23.91	73.59	14915
1.450 F	1.16	4	17.79	0.83	22.16	60.05	12384	63.77	2.78	0.98	23.88	73.34	14869
1.500 F	1.85	1 1/2	23.78	0.75	20.33	55.89	11268	65.62	3.37	0.98	23.78	72.85	14767
1.550 F	2.24	1	27.53	0.64	19.35	53.12	10570	67.86	4.17	0.97	23.63	72.20	14629
1.600 F	2.41	1	33.23	0.58	18.32	48.45	9769	70.27	5.16	0.95	23.45	71.39	14461
1.600 S	29.73	0	82.46	0.26	6.74	10.80	2308	100.00	28.14	0.75	18.48	53.38	10848
<u>Total</u>	100.00		28.14	0.75	18.48	53.38	10848						

Flotation Test on -28m Fraction

Product	% Weight	Elementary Data						% Distribution				
		FSI	% Ash	% S	% VM	% FC	Btu	Ash	S	VM	FC	Btu
Conc. I	80.38	2 1/2	7.01	0.89	23.48	69.51	14087	30.49	79.98	89.60	92.42	92.19
Conc. II	8.44	1	33.48	0.97	17.97	48.55	10032	15.29	9.17	7.20	6.78	6.90
Rejects	11.18	0	89.64	0.87	6.03	4.33	1003	54.22	10.85	3.20	0.80	0.91
<u>Total</u>	100.00		18.48	0.89	21.06	60.46	12282	100.00	100.00	100.00	100.00	100.00

South Mount Gething
Hole SMG 79-6
Sample #2
 92.73-94.07 Meters
Washability Test

		Moisture Free Basis											
Product and Sp. Gr.	% Weight	Elementary Data						Cumulative Data					
		FSI	% Ash	% S	% VM	% FC	Btu	% Weight	% Ash	% S	% VM	% FC	Btu
<u>Minus 3/8" x 28m Fraction</u>													
1.300 F	61.52	0	1.60	0.83	22.42	75.98	14925	61.52	1.60	0.83	22.42	75.98	14925
1.350 F	37.38	0	2.05	0.76	22.31	75.64	14902	98.90	1.77	0.80	22.38	75.85	14916
1.400 F	0.73	0	5.07	1.12	20.43	74.50	14286	99.63	1.79	0.81	22.36	75.85	14911
1.400 S	0.37	0	28.65	3.10	17.59	53.76	10325	100.00	1.89	0.81	22.35	75.76	14894
<u>Total</u>	100.00		1.89	0.81	22.35	75.76	14894						

Flotation Test on -28m Fraction

Product	% Weight	Elementary Data						% Distribution				
		FSI	% Ash	% S	% VM	% FC	Btu	Ash	S	VM	FC	Btu
Conc. I	88.60	1	1.22	0.77	21.44	77.34	14939	34.57	69.52	88.06	91.00	90.71
Conc. II	9.49	0	17.95	2.62	22.59	59.46	11899	65.43	30.48	11.94	9.00	9.29
Rejects	1.91											
<u>Total</u>	100.00		3.13	0.98	21.57	75.30	14592	100.00	100.00	100.00	100.00	100.00

South Mount Gething

Hole SMG 79-6

Sample #3

94.97-95.97 Meters

Washability Test

Moisture Free Basis

<u>Product and Sp. Gr.</u>	<u>% Weight</u>	<u>Elementary Data</u>						<u>Cumulative Data</u>					
		<u>FSI</u>	<u>% Ash</u>	<u>% S</u>	<u>% VM</u>	<u>% FC</u>	<u>Btu</u>	<u>% Weight</u>	<u>% Ash</u>	<u>% S</u>	<u>% VM</u>	<u>% FC</u>	<u>Btu</u>
<u>Minus 3/8" x 28m Fraction</u>													
1.300 F	26.54	2 1/2	1.09	0.83	22.18	76.73	15112	26.54	1.09	0.83	22.18	76.73	15112
1.350 F	70.17	0	2.11	0.71	21.83	76.06	15018	96.71	1.83	0.74	21.93	76.24	15044
1.400 F	1.59	0	7.06	0.71	17.88	75.06	13409	98.30	1.91	0.74	21.86	76.23	15017
1.400 S	1.70	0	40.90	0.77	15.02	44.08	8635	100.00	2.58	0.74	21.44	75.68	14909
<u>Total</u>	100.00		2.58	0.74	21.74	75.68	14909						

Flotation Test on -28m Fraction

<u>Product</u>	<u>% Weight</u>	<u>Elementary Data</u>						<u>% Distribution</u>				
		<u>FSI</u>	<u>% Ash</u>	<u>% S</u>	<u>% VM</u>	<u>% FC</u>	<u>Btu</u>	<u>Ash</u>	<u>S</u>	<u>VM</u>	<u>FC</u>	<u>Btu</u>
Conc. I	61.99	1	3.06	0.74	20.58	76.36	14885	38.09	56.74	61.83	63.63	63.75
Conc. II	33.76	1	8.11	0.92	20.72	71.17	13803	61.91	43.26	38.17	36.37	36.25
Rejects	4.25											
<u>Total</u>	100.00		4.98	0.81	20.63	74.39	14474	100.00	100.00	100.00	100.00	100.00

Section Name: Security

Hole SMG 79-6

Sample #5

175.57-176.53 Meters

Washability Test

Product and Sp. Gr.	% Weight	Moisture Free Basis						Moisture Free Basis					
		Elementary Data						Cumulative Data					
		FSI	% Ash	% S	% VM	% FC	Btu	% Weight	% Ash	% S	% VM	% FC	Btu
<u>Minus 3/8" x 28m Fraction</u>													
1.300 F	2.53	0	1.19	0.77	18.12	80.69	15045	2.53	1.19	0.77	18.12	80.69	15045
1.350 F	88.81	0	2.06	0.75	17.70	80.24	15004	91.34	2.04	0.75	17.71	80.25	15045
1.400 F	5.39	0	4.98	0.79	19.37	75.65	14135	96.73	2.20	0.75	17.80	80.00	14957
1.450 F	1.09	0	9.77	0.88	22.50	67.73	13277	97.82	2.28	0.75	17.86	79.86	14939
1.500 F	0.42	}	17.57	0.84	24.42	58.01	11826	98.66	2.41	0.76	17.91	79.68	14912
1.550 F	0.32												
1.600 F	0.10												
1.600 S	1.34	0	45.12	0.48	39.38	15.50	5427	100.00	2.99	0.75	18.20	78.81	14785
<u>Total</u>	100.00		2.99	0.75	18.20	78.81	14785						

Flotation Test on -28m Fraction

Product	% Weight	Elementary Data						% Distribution				
		FSI	% Ash	% S	% VM	% FC	Btu	Ash	S	VM	FC	Btu
Conc. I	85.52	0	2.17	0.73	18.81	79.02	14737	55.09	80.00	85.31	86.89	86.67
Conc. II	13.43	}	10.45	1.08	19.12	70.43	13383	44.91	20.00	14.69	13.11	13.33
Rejects	1.05											
<u>Total</u>	100.00		3.37	0.78	18.86	77.77	14541	100.00	100.00	100.00	100.00	100.00

South Mount Gerhing

Hole SMG 79-7

Head Analysis

Sample No.	Depth	No. of Meters	Air Dry Basis								Moisture Free Basis				
			Grams Rec'd	% H ₂ O	% Ash	% S	% VM	% FC	Btu	FSI	% Ash	% S	% VM	% FC	Btu
1	30.22- 30.89	0.67	1081	1.15	6.27	1.06	24.41	68.17	13879	1	6.34	1.07	24.69	68.97	14040
2	62.70- 63.25	0.55	1132	1.58	6.00	2.33	20.43	71.99	14095	1	6.10	2.37	20.76	73.14	14321
3A	76.08- 76.65	0.57	2357	1.24	7.06	0.78	20.76	70.94	13748	0	7.15	0.79	21.02	71.83	13936
3AB	76.08- 76.87	0.79	3623	0.80	17.57	0.67	28.22	53.41	11282	0	17.71	0.68	28.45	53.84	11373
4	83.58- 84.18	0.60	1703	0.92	8.62	0.81	20.08	70.38	13676	1	8.70	0.82	20.27	71.03	13803
5	99.36-100.04	0.68	1191	1.08	13.68	0.88	23.38	61.86	12437	1	13.83	0.89	23.64	62.53	12573
6	104.92-105.46	0.54	727	0.89	11.42	0.65	25.64	62.05	12654	0	11.52	0.66	25.87	62.61	12768
7C	106.30-106.82	0.52	1204	1.42	8.20	0.74	24.64	65.74	13402	1	8.32	0.75	24.99	66.69	13595
7ABCD	105.89-106.97	1.08	2877	0.63	45.67	1.01	19.72	33.98	7444	0	45.96	1.02	19.85	34.19	7491
8	152.24-153.00	0.76	1476	0.98	13.69	1.10	20.79	64.54	12244	3 1/2	13.83	1.11	21.00	65.17	12365
9	137.24-137.77	0.53	405	1.07	9.81	0.73	21.08	68.04	13360	1	9.92	0.74	21.31	68.77	13504

Structures

Size	Sample 3AB		Sample 7ABCD	
	% Weight	Cum. % Weight	% Weight	Cum. % Weight
1/4"	45.60	45.60	41.01	41.01
+6 m	25.14	70.74	27.97	68.98
+10 m	11.85	82.59	12.89	81.87
+28 m	9.23	91.82	9.56	91.43
-28 m	8.18	100.00	8.57	100.00
- Total	100.00		100.00	

South Mount Gething
Hole SMG 79-7
Single Gravity Tests

Moisture Free Basis

Product and Sp. Gr.	% Weight	Elementary Data						% Distribution				
		FSI	% Ash	% S	% VM	% FC	Btu	Ash	S	VM	FC	Btu
<u>Sample #1 3/8" x 0</u>												
1.400 F	86.02	1 1/2	2.47	1.06	23.20	74.33	14954	35.25	83.67	78.65	93.21	90.90
1.400 S	13.98	1	27.92	1.27	38.75	33.33	9209	64.75	16.33	21.35	6.79	9.10
<u>Total</u>	100.00		6.03	1.09	25.37	68.60	14150	100.00	100.00	100.00	100.00	100.00
<u>Sample #2 3/8" x 0</u>												
1.400 F	87.45	1	2.44	1.40	21.94	75.62	15042	33.15	53.61	90.29	91.45	92.28
1.400 S	12.55	0	34.29	8.44	16.45	49.26	8775	66.85	46.39	9.71	8.55	7.72
<u>Total</u>	100.00		6.44	2.28	21.25	72.31	14255	100.00	100.00	100.00	100.00	100.00
<u>Sample #3A 3/8" x 0</u>												
1.400 F	87.79	0	2.95	0.86	20.19	76.86	14953	38.02	90.75	83.34	93.82	93.72
1.400 S	12.21	0	34.59	0.63	29.02	36.39	7206	61.98	9.25	16.66	6.18	6.28
<u>Total</u>	100.00		6.81	0.83	21.27	71.92	14007	100.00	100.00	100.00	100.00	100.00
<u>Sample #3AB 3/8" x 0</u>												
1.400 F	69.05	1	3.00	0.87	20.58	76.42	14742	12.25	86.23	52.52	94.18	88.64
1.400 S	30.95	0	47.96	0.31	41.50	10.54	4215	87.75	13.77	47.48	5.82	11.36
<u>Total</u>	100.00		16.92	0.70	27.05	56.03	11484	100.00	100.00	100.00	100.00	100.00

South Mount Gething

Hole SMG 79-7

Single Gravity Tests

		<u>Moisture Free Basis</u>										
<u>Product and Sp. Gr.</u>	<u>% Weight</u>	<u>Elementary Data</u>						<u>% Distribution</u>				
		<u>FSI</u>	<u>% Ash</u>	<u>% S</u>	<u>% VM</u>	<u>% FC</u>	<u>Btu</u>	<u>Ash</u>	<u>S</u>	<u>VM</u>	<u>FC</u>	<u>Btu</u>
<u>Sample #4 3/8" x 0</u>												
1.400 F	86.93	1 1/2	2.51	0.85	21.60	75.89	14832	23.83	89.14	88.49	94.75	93.70
1.400 S	13.07	0	53.35	0.69	18.69	27.96	6636	76.17	10.86	11.51	5.25	6.30
<u>Total</u>	100.00		9.16	0.83	21.22	69.62	13760	100.00	100.00	100.00	100.00	100.00
<u>Sample #5 3/8" x 0</u>												
1.400 F	77.67	1	3.38	0.81	22.87	73.75	14388	19.91	70.28	71.46	92.45	89.49
1.400 S	22.33	0	47.29	1.19	31.77	20.94	5877	80.09	29.72	28.54	7.55	10.51
<u>Total</u>	100.00		13.19	0.90	24.86	61.95	12487	100.00	100.00	100.00	100.00	100.00
<u>Sample #6 3/8" x 0</u>												
1.400 F	55.97	0	6.20	0.72	22.47	71.33	14184	29.57	60.78	49.14	63.70	61.63
1.400 S	44.03	0	18.77	0.59	29.56	51.67	11226	70.43	39.22	50.86	36.30	38.37
<u>Total</u>	100.00		11.73	0.66	25.59	62.68	12882	100.00	100.00	100.00	100.00	100.00
<u>Sample #7ABCD 3/8" x 0</u>												
1.400 F	34.06	0	3.65	0.80	22.23	74.12	14606	2.81	26.23	36.83	71.80	66.14
1.400 S	65.94	0	65.26	1.16	19.70	15.04	3863	97.19	73.77	63.17	28.20	33.86
<u>Total</u>	100.00		44.28	1.04	20.56	35.16	7522	100.00	100.00	100.00	100.00	100.00

South Mount Gething

Hole SMG 79-7

Single Gravity Tests

Moisture Free Basis

<u>Product and Sp. Gr.</u>	<u>% Weight</u>	<u>Elementary Data</u>						<u>% Distribution</u>				
		<u>FSI</u>	<u>% Ash</u>	<u>% S</u>	<u>% VM</u>	<u>% FC</u>	<u>Btu</u>	<u>Ash</u>	<u>S</u>	<u>VM</u>	<u>FC</u>	<u>Btu</u>
<u>Sample #7C 3/8" x 0</u>												
1.400 F	80.27	1	3.30	0.79	21.53	75.17	14760	32.79	82.55	70.98	89.29	88.09
1.400 S	19.73	0	27.52	0.68	35.81	36.67	8118	67.21	17.45	29.02	10.71	11.91
<u>Total</u>	100.00		8.08	0.77	24.35	67.57	13449	100.00	100.00	100.00	100.00	100.00
<u>Sample #8 3/8" x 0</u>												
1.400 F	73.16	7	6.79	1.22	22.98	70.23	14435	37.72	76.17	77.16	79.00	86.14
1.400 S	26.84	3 1/2	30.56	1.04	18.54	50.90	6330	62.28	23.83	22.84	21.00	13.86
<u>Total</u>	100.00		13.17	1.17	21.79	65.04	12260	100.00	100.00	100.00	100.00	100.00
<u>Sample #9 3/8" x 0</u>												
1.400 F	89.81	1/2	4.53	0.82	18.34	77.13	14729	43.10	95.58	80.70	98.75	97.49
1.400 S	10.19	0	52.70	0.33	38.67	8.63	3332	56.90	4.42	19.30	1.25	2.51
<u>Total</u>	100.00		9.44	0.77	20.41	70.15	13568	100.00	100.00	100.00	100.00	100.00

South Mount Gething

Hole SMG 79-7

Sample #3AB

76.08-76.87 Meters

Washability Test

Product and Sp. Gr.	% Weight	Moisture Free Basis											
		Elementary Data						Cumulative Data					
		FSI	% Ash	% S	% VM	% FC	Btu	% Weight	% Ash	% S	% VM	% FC	Btu
<u>Minus 3/8" x 28m Fraction</u>													
1.300 F	16.67	4 1/2	2.10	0.97	22.57	75.33	15072	16.67	2.10	0.97	22.57	75.33	15072
1.350 F	46.93	0	2.97	0.87	21.71	75.32	15047	63.60	2.74	0.90	21.94	75.32	15055
1.400 F	3.98	0	9.16	0.85	21.83	69.01	13769	67.58	3.12	0.89	21.93	74.95	14979
1.450 F	1.15	0	12.97	0.87	24.14	62.89	13027	68.73	3.29	0.89	21.97	74.74	14947
1.500 F	1.00	0	16.47	0.78	25.90	57.63	12118	69.73	3.47	0.89	22.02	74.51	14906
1.550 F	0.67	0	19.81	0.73	26.79	53.40	11423	70.40	3.63	0.89	22.08	74.29	14874
1.600 F	0.70	0	23.26	0.72	28.44	48.30	10649	71.10	3.82	0.89	22.14	74.04	14833
1.600 S	28.90	0	54.65	0.18	44.64	0.71	2437	100.00	18.51	0.68	28.64	52.85	11250
<u>Total</u>	100.00		18.51	0.68	28.64	52.85	11250						

Flotation Test on -28m Fraction

Product	% Weight	Elementary Data						% Distribution				
		FSI	% Ash	% S	% VM	% FC	Btu	Ash	S	VM	FC	Btu
Conc. I	73.72	1	4.91	0.88	22.56	72.53	14116	25.07	84.51	64.83	89.25	86.29
Conc. II	13.03	0	23.05	0.72	28.72	48.23	10614	20.80	12.24	14.59	10.49	11.47
Rejects	13.25	0	58.97	0.19	39.84	1.19	2048	54.13	3.25	20.58	0.26	2.24
<u>Total</u>	100.00		14.44	0.77	25.65	59.91	12060	100.00	100.00	100.00	100.00	100.00

South Mount Gething
Hole SMG 79-7
Sample #7ABCD
 105.89-106.97 Meters
Washability Test

Product and Sp. Gr.		Moisture Free Basis											
		Elementary Data						Cumulative Data					
% Weight	FSI	% Ash	% S	% VM	% FC	Btu	% Weight	% Ash	% S	% VM	% FC	Btu	
<u>Minus 3/8" x 28m Fraction</u>													
1.300 F	7.78	3	1.77	0.83	23.45	74.78	15077	7.78	1.77	0.83	23.45	74.78	15077
1.350 F	22.23	1 1/2	3.62	0.78	22.44	73.94	14741	30.01	3.14	0.79	22.70	74.16	14828
1.400 F	5.31	1 1/2	9.56	0.79	23.49	66.95	13652	35.32	4.11	0.79	22.82	73.07	14652
1.450 F	2.11	1	14.02	0.86	26.86	59.12	12675	37.43	4.67	0.80	23.05	72.28	14539
1.500 F	1.59	1	20.65	1.14	27.09	52.26	11682	39.02	5.32	0.81	23.21	71.47	14423
1.550 F	1.98	1	26.50	1.47	26.00	47.50	10877	41.00	6.34	0.84	23.35	70.31	14251
1.600 F	1.44	1	29.14	1.78	24.62	46.24	10210	42.44	7.12	0.87	23.39	69.49	14114
1.600 S	57.56	0	72.36	1.49	18.60	9.04	2884	100.00	44.67	1.06	20.63	34.70	7650
<u>Total</u>	100.00		44.67	1.06	20.63	34.70	7650						

Flotation Test on -28m Fraction

Product	% Weight	Elementary Data						% Distribution				
		FSI	% Ash	% S	% VM	% FC	Btu	Ash	S	VM	FC	Btu
Conc. I	68.82	1 1/2	10.76	0.85	26.12	63.12	12707	27.73	65.14	74.60	88.30	87.23
Conc. II	10.80	0	32.60	0.97	28.99	38.41	7715	13.18	11.69	12.99	8.43	8.31
Rejects	20.38	0	77.43	1.02	14.67	7.90	2192	59.09	23.17	12.41	3.27	4.46
<u>Total</u>	100.00		26.71	0.90	24.10	49.19	10025	100.00	100.00	100.00	100.00	100.00

South Mount Gething

Hole SMG 79-8

Head Analysis

Sample No.	Depth	No. of Meters	Air Dry Basis								Moisture Free Basis				
			Grams Rec'd	% H ₂ O	% Ash	% S	% VM	% FC	Btu	FSI	% Ash	% S	% VM	% FC	Btu
1A	59.73- 60.14	0.41	1389	1.29	7.62	0.67	21.19	69.90	13742	0	7.72	0.68	21.47	70.81	13922
1B	60.43- 61.39	0.96	1917	1.91	4.24	0.72	20.80	73.05	14238	0	4.32	0.73	21.21	74.47	14515
2	68.29- 69.17	0.88	3266	1.40	6.51	0.89	22.26	69.83	13849	1 1/2	6.60	0.90	22.58	70.82	14046
3A	117.54-118.47	0.93	3718	1.14	12.27	0.69	20.04	66.55	13062	1	12.41	0.70	20.27	67.32	13213
3B	118.76-118.88	0.12	421	1.08	3.98	0.96	24.00	70.94	14531	8	4.02	0.97	24.26	71.72	14690
4A	119.31-119.81	0.50	1654	1.22	3.53	0.73	21.85	73.40	14558	1 1/2	3.57	0.74	22.12	74.31	14738
4B	120.01-120.43	0.42	1193	1.07	8.12	0.66	23.08	67.73	13601	1	8.21	0.67	23.33	68.46	13748
4AB	119.31-120.43	1.12	4012	1.16	16.49	0.56	28.97	53.38	11418	0	16.68	0.57	29.31	54.01	11542
5A	126.21-127.14	0.93	3457	0.80	8.56	1.02	20.49	70.15	14058	1 1/2	8.63	1.03	20.66	70.71	14172
5AB	126.21-127.31	1.10	4467	0.72	21.35	0.93	18.27	59.66	11944	1 1/2	21.50	0.94	18.40	60.10	12031

Structures

Size	Sample #1B		Sample #3A		Sample #4AB		Sample #5AB	
	% Weight	Cum. % Weight	% Weight	Cum. % Weight	% Weight	Cum. % Weight	% Weight	Cum. % Weight
+1/4"	33.03	33.03	34.40	34.40	32.43	32.43	32.12	32.12
+6 m	29.60	62.63	30.67	65.07	29.81	62.24	30.52	62.64
+10 m	14.90	77.53	14.88	79.95	16.67	78.91	16.41	79.04
+28 m	12.14	89.67	11.08	91.03	11.91	90.82	12.24	91.29
-28 m	10.33	100.00	8.97	100.00	9.18	100.00	8.71	100.00
<u>Total</u>	100.00		100.00		100.00		100.00	

South Mount Gething

Hole SMG 79-8

Single Gravity Tests

Moisture Free Basis

Product and Sp. Gr.	% Weight	Elementary Data						% Distribution				
		FSI	% Ash	% S	% VM	% FC	Btu	Ash	S	VM	FC	Btu
<u>Sample #1A</u>												
1.400 F	83.18	1	3.52	0.72	20.67	75.81	14782	37.68	86.81	81.74	88.57	87.71
1.400 S	16.82	0	28.79	0.54	22.83	48.38	10245	62.32	13.19	18.26	11.43	12.29
<u>Total</u>	100.00		7.77	0.69	21.03	71.20	14019	100.00	100.00	100.00	100.00	100.00
<u>Sample #1B</u>												
1.400 F	93.53	0	3.33	0.72	21.02	75.65	14779	69.05	95.19	91.58	95.59	95.09
1.400 S	6.47	0	21.68	0.53	27.94	50.48	11014	30.95	4.81	8.42	4.41	4.91
<u>Total</u>	100.00		4.51	0.71	21.47	74.02	14536	100.00	100.00	100.00	100.00	100.00
<u>Sample #2</u>												
1.400 F	90.75	1 1/2	3.85	0.92	21.88	74.27	14766	51.68	95.10	90.15	94.65	94.64
1.400 S	9.25	0	35.32	0.47	23.46	41.22	8201	48.32	4.90	9.85	5.35	5.36
<u>Total</u>	100.00		6.76	0.88	22.03	71.21	14159	100.00	100.00	100.00	100.00	100.00
<u>Sample #3A</u>												
1.400 F	76.13	1	4.38	0.73	20.34	75.28	14778	28.37	75.14	72.04	85.85	85.79
1.400 S	23.87	0	35.26	0.77	25.18	39.56	7811	71.63	24.86	27.96	14.15	14.21
<u>Total</u>	100.00		11.75	0.74	21.50	66.75	13114	100.00	100.00	100.00	100.00	100.00

South Mount Gething

Hole SMG 79-8

Single Gravity Tests

Moisture Free Basis

<u>Product and Sp. Gr.</u>	<u>% Weight</u>	<u>Elementary Data</u>					<u>% Distribution</u>					
		<u>FSI</u>	<u>% Ash</u>	<u>% S</u>	<u>% VM</u>	<u>% FC</u>	<u>Btu</u>	<u>Ash</u>	<u>S</u>	<u>VM</u>	<u>FC</u>	<u>Btu</u>
<u>Sample #3B 3/8" x 0</u>												
1.400 F	97.22	8 1/2	3.11	0.97	25.94	70.95	14957	78.00	96.52	97.35	98.23	98.08
1.400 S	2.78	4 1/2	30.68	1.21	24.66	44.66	10227	22.00	3.48	2.65	1.77	1.92
<u>Total</u>	100.00		3.88	0.98	25.91	70.21	14825	100.00	100.00	100.00	100.00	100.00
<u>Sample #4A 3/8" x 0</u>												
1.400 F	94.62	2	2.63	0.74	22.15	75.22	15019	66.48	95.89	92.35	96.75	97.36
1.400 S	5.38	0	23.33	0.55	32.29	44.38	7177	33.52	4.11	7.65	3.25	2.64
<u>Total</u>	100.00		3.74	0.73	22.70	73.56	14597	100.00	100.00	100.00	100.00	100.00
<u>Sample #4B 3/8" x 0</u>												
1.400 F	88.01	1 1/2	4.53	0.71	21.87	73.60	14627	51.32	91.91	83.29	93.71	92.99
1.400 S	11.99	0	31.54	0.46	32.20	36.26	8087	48.68	8.09	16.71	6.29	7.01
<u>Total</u>	100.00		7.77	0.68	23.11	69.12	13843	100.00	100.00	100.00	100.00	100.00
<u>Sample #4AB 3/8" x 0</u>												
1.400 F	67.45	2	3.49	0.73	22.06	74.45	14864	13.83	84.39	52.84	91.60	86.74
1.400 S	32.55	0	45.05	0.28	40.80	14.15	4709	86.17	15.61	47.16	8.40	13.26
<u>Total</u>	100.00		17.02	0.58	28.16	54.82	11559	100.00	100.00	100.00	100.00	100.00

South Mount Gething

Hole SMG 79-8

Single Gravity Tests

Moisture Free Basis

<u>Product and Sp. Gr.</u>	<u>% Weight</u>	<u>Elementary Data</u>					<u>% Distribution</u>					
		<u>FSI</u>	<u>% Ash</u>	<u>% S</u>	<u>% VM</u>	<u>% FC</u>	<u>Btu</u>	<u>Ash</u>	<u>S</u>	<u>VM</u>	<u>FC</u>	<u>Btu</u>
<u>Sample #5A. 3/8" x 0</u>												
1.400 F	84.66	3	3.60	1.06	21.54	74.86	14998	34.82	88.64	87.21	90.10	89.64
1.400 S	15.34	1	37.20	0.75	17.43	45.37	9571	65.18	11.36	12.79	9.90	10.36
<u>Total</u>	100.00		8.75	1.01	20.91	70.34	14165	100.00	100.00	100.00	100.00	100.00
<u>Sample #5AB 3/8" x 0</u>												
1.400 F	68.12	4 1/2	3.71	1.09	21.99	74.30	14737	12.13	77.64	76.12	85.07	83.91
1.400 S	31.88	1	57.40	0.67	14.74	27.86	6038	87.87	22.36	23.88	14.93	16.09
<u>Total</u>	100.00		20.83	0.96	19.68	59.49	11964	100.00	100.00	100.00	100.00	100.00

South Mount Gething
Hole SMG 79-8
Sample #1B
 60.43-61.39 Meters
Washability Test

		Moisture Free Basis											
Product and Sp. Gr.	% Weight	Elementary Data						Cumulative Data					
		FSI	% Ash	% S	% VM	% FC	Btu	% Weight	% Ash	% S	% VM	% FC	Btu
<u>Minus 3/8" x 28m Fraction</u>													
1.300 F	27.10	2	1.93	0.82	23.15	74.92	15074	27.10	1.93	0.82	23.15	74.92	15074
1.350 F	56.15	0	3.02	0.70	22.18	74.80	14858	83.25	2.67	0.74	22.50	74.83	14929
1.400 F	11.54	0	7.39	0.62	20.69	71.92	13899	94.79	3.24	0.73	22.28	74.48	14803
1.450 F	2.31	0	11.51	0.62	23.73	64.76	13108	97.10	3.44	0.72	22.31	74.25	14763
1.500 F	1.09	0	14.74	0.60	25.30	59.96	12371	98.19	3.56	0.72	22.34	74.10	14737
1.550 F	0.35	0	20.90	0.58	28.09	51.01	11170	98.79	3.67	0.72	22.38	73.95	14715
1.600 F	0.25												
1.600 S	1.21	0	39.50	0.38	35.51	24.99	6912	100.00	4.10	0.72	22.54	73.36	14621
<u>Total</u>	100.00		4.10	0.72	22.54	73.36	14621						

Flotation Test on -28m Fraction

Product	% Weight	Elementary Data						% Distribution				
		FSI	% Ash	% S	% VM	% FC	Btu	Ash	S	VM	FC	Btu
Conc. I	86.54	1	2.74	0.73	21.75	75.51	14352	50.52	88.64	84.48	89.48	88.62
Conc. II	11.48	0	17.25	0.60	25.69	57.06	11849	49.48	11.36	15.52	10.52	11.38
Rejects	1.98											
<u>Total</u>			4.69	0.71	22.28	73.03	14015	100.00	100.00	100.00	100.00	100.00

South Mount Gething

Hole SMG 79-8

Sample #3A

117.54-118.47 Meters

Washability Test

		Moisture Free Basis											
Product and Sp. Gr.		Elementary Data						Cumulative Data					
	% Weight	FSI	% Ash	% S	% VM	% FC	Btu	% Weight	% Ash	% S	% VM	% FC	Btu
<u>Minus 3/8" x 28m Fraction</u>													
1.300 F	12.05	3	2.12	0.85	21.29	76.59	15134	12.05	2.12	0.85	21.29	76.59	15134
1.350 F	51.27	1 1/2	3.41	0.75	20.70	75.89	14887	63.32	3.16	0.77	20.81	76.03	14935
1.400 F	9.91	1 1/2	10.70	0.68	19.58	69.72	13734	73.23	4.18	0.76	20.64	75.18	14773
1.450 F	3.71	0	16.15	0.67	18.88	64.97	12764	76.94	4.76	0.75	20.56	74.68	14676
1.500 F	2.58	0	21.18	0.64	18.64	60.18	11902	79.52	5.29	0.75	20.50	74.21	14586
1.550 F	2.08	0	25.36	0.60	20.53	54.11	11111	81.60	5.80	0.75	20.50	73.70	14498
1.600 F	1.60	0	29.47	0.56	23.79	46.74	10378	83.20	6.26	0.74	20.56	73.18	14418
1.600 S	16.80	0	47.17	0.40	21.85	30.98	6759	100.00	13.13	0.68	20.78	66.09	13132
<u>Total</u>	100.00		13.13	0.68	20.78	66.09	13132						

Flotation Test on -28m Fraction

Product		Elementary Data						% Distribution				
	% Weight	FSI	% Ash	% S	% VM	% FC	Btu	Ash	S	VM	FC	Btu
Conc. I	79.56	1	6.83	0.69	20.77	72.40	14115	49.97	82.56	79.69	84.23	83.57
Conc. II	12.33	0	17.95	0.63	21.22	60.83	12246	20.35	11.73	12.62	10.97	11.24
Rejects	8.11	0	39.79	0.47	19.68	40.53	8601	29.68	5.71	7.69	4.80	5.19
<u>Total</u>	100.00		10.87	0.67	20.74	68.39	13438	100.00	100.00	100.00	100.00	100.00

COAL ANALYSIS REPORT
Hole SMG 79-8
Sample #4AB
119.31-120.43 Meters
Washability Test

Product and Sp. Gr.	% Weight	Elementary Data						Cumulative Data					
		FSI	% Ash	% S	% VM	% FC	Btu	% Weight	% Ash	% S	% VM	% FC	Btu
<u>Minus 3/8" x 28m Fraction</u>													
1.300 F.	27.18	3 1/2	1.78	0.78	21.94	76.28	15092	27.18	1.78	0.78	21.94	76.28	15092
1.350 F	34.62	1 1/2	3.82	0.71	21.00	75.18	14714	61.80	2.92	0.74	21.41	75.67	14880
1.400 F	4.72	1 1/2	8.91	0.71	24.10	66.99	13695	66.52	3.35	0.74	21.60	75.05	14796
1.450 F	1.67	0	13.68	0.67	26.93	59.39	12761	68.19	3.60	0.74	21.73	74.67	14746
1.500 F	1.09	0	17.47	0.63	27.43	55.10	11781	69.28	3.82	0.74	21.82	74.36	14698
1.550 F	1.03	0	18.44	0.61	29.17	52.39	11433	70.31	4.03	0.73	21.93	74.04	14651
1.600 F	0.82	0	21.98	0.60	30.16	47.86	10718	71.13	4.24	0.67	22.03	73.73	14606
1.600 S	28.87	0	48.13	0.21	43.48	8.39	3912	100.00	16.91	0.58	28.22	54.87	11518
<u>Total</u>	100.00		16.91	0.58	28.22	54.87	11518						

Flotation Test on -28m Fraction

Product	% Weight	Elementary Data						% Distribution				
		FSI	% Ash	% S	% VM	% FC	Btu	Ash	S	VM	FC	Btu
Conc. I	66.01	2	6.39	0.69	23.80	69.81	14101	29.12	74.84	64.53	75.34	75.76
Conc. II	26.08	0	21.20	0.53	29.28	49.52	10805	38.17	22.70	31.36	21.11	22.94
Rejects	7.91	0	59.92	0.19	12.64	27.44	2023	32.71	2.46	4.11	3.55	1.30
<u>Total</u>	100.00		14.89	0.61	24.35	61.16	12286	100.00	100.00	100.00	100.00	100.00

SOUTH PLANT DESIGN

Hole SMG 79-8

Sample #5AB

126.21-127.31 Meters

Washability Test

Product and Sp. Gr.	% Weight	Moisture Free Basis											
		Elementary Data						Cumulative Data					
		FSI	% Ash	% S	% VM	% FC	Btu	% Weight	% Ash	% S	% VM	% FC	Btu
<u>Minus 3/8" x 28m Fraction</u>													
1.300 F	25.33	7	2.03	1.16	22.56	75.41	15177	25.33	2.03	1.16	22.56	75.41	15177
1.350 F	40.18	2 1/2	5.89	1.02	20.73	73.38	14503	65.51	4.40	1.07	21.44	74.16	14763
1.400 F	3.41	3	10.92	1.09	20.56	68.52	13637	68.92	4.72	1.08	21.39	73.89	14707
1.450 F	2.19	3	18.06	1.04	20.47	61.47	12435	71.11	5.13	1.07	21.36	73.51	14636
1.500 F	1.82	3	24.15	1.02	19.90	55.95	11518	72.93	5.61	1.07	21.33	73.06	14559
1.550 F	2.09	3	30.31	0.96	19.28	50.41	10554	75.02	6.29	1.07	21.27	72.44	14448
1.600 F	2.28	1 1/2	35.18	0.91	17.79	47.03	9798	77.30	7.15	1.07	21.17	71.68	14310
1.600 S	22.70	0	71.92	0.49	10.52	17.56	3679	100.00	21.85	0.94	18.75	59.40	11897
<u>Total</u>	100.00		21.85	0.94	18.75	59.40	11897						

Flotation Test on -28m Fraction

Product	% Weight	Elementary Data						% Distribution				
		FSI	% Ash	% S	% VM	% FC	Btu	Ash	S	VM	FC	Btu
Conc. I	74.50	4	6.54	1.07	21.55	71.91	14458	30.31	80.10	79.41	84.09	83.18
Conc. II	16.72	3	25.36	1.00	19.37	55.27	12046	26.38	16.78	16.02	14.51	15.55
Rejects	8.78	0	79.30	0.35	10.51	10.19	1865	43.31	3.12	4.57	1.40	1.27
<u>Total</u>	100.00		16.08	1.00	20.22	63.70	12949	100.00	100.00	100.00	100.00	100.00

South Mount Gething

Hole SMG 79-9

Head Analysis

<u>Sample No.</u>	<u>Depth</u>	<u>No. of Meters</u>	<u>Air Dry Basis</u>								<u>Moisture Free Basis</u>				
			<u>Grams Rec'd</u>	<u>% H₂O</u>	<u>% Ash</u>	<u>% S</u>	<u>% VM</u>	<u>% FC</u>	<u>Btu</u>	<u>FSI</u>	<u>% Ash</u>	<u>% S</u>	<u>% VM</u>	<u>% FC</u>	<u>Btu</u>
1	38.10-39.04	0.94	4020	1.49	14.35	0.78	26.39	57.77	12169	1/2	14.57	0.79	26.79	58.64	12353
2	41.66-42.18	0.52	1940	1.20	18.80	1.83	27.79	52.21	11443	1 1/2	19.03	1.85	28.13	52.84	11582

Structure

<u>Size</u>	<u>Sample #1</u>	
	<u>% Weight</u>	<u>Cum. % Weight</u>
1/4"	28.02	28.02
+6 m	28.02	56.04
+10 m	16.24	72.28
+28 m	14.30	86.58
-28 m	13.42	100.00
<u>Total</u>	100.00	

South Mount Gething

Hole SMG 79-9

Single Gravity Tests

Moisture Free Basis

<u>Product and Sp. Gr.</u>	<u>% Weight</u>	<u>Elementary Data</u>					<u>% Distribution</u>					
		<u>FSI</u>	<u>% Ash</u>	<u>% S</u>	<u>% VM</u>	<u>% FC</u>	<u>Btu</u>	<u>Ash</u>	<u>S</u>	<u>VM</u>	<u>FC</u>	<u>Btu</u>
<u>Sample #1 3/8" x 0</u>												
1.400 F	73.91	2 1/2	4.25	0.76	22.56	73.19	14659	22.02	74.73	61.57	92.22	86.88
1.400 S	26.09	0	42.63	0.73	39.89	17.48	6272	77.98	25.27	38.43	7.78	13.12
<u>Total</u>	100.00		14.26	0.75	27.08	58.66	12470	100.00	100.00	100.00	100.00	100.00
<u>Sample #2 3/8" x 0</u>												
1.400 F	55.94	1	5.08	0.81	22.14	72.78	14584	15.02	25.71	43.03	77.84	70.80
1.400 S	44.06	1	36.49	2.97	37.21	26.30	7634	84.98	74.29	56.97	22.16	29.20
<u>Total</u>	100.00		18.92	1.76	28.78	52.30	11522	100.00	100.00	100.00	100.00	100.00

South Mount Gething

Hole SMG 79-9

Sample #1

38.10-39.04 Meters

Washability Test

Moisture Free Basis

<u>Product and Sp. Gr.</u>	<u>% Weight</u>	<u>Elementary Data</u>						<u>Cumulative Data</u>					
		<u>FSI</u>	<u>% Ash</u>	<u>% S</u>	<u>% VM</u>	<u>% FC</u>	<u>Btu</u>	<u>% Weight</u>	<u>% Ash</u>	<u>% S</u>	<u>% VM</u>	<u>% FC</u>	<u>Btu</u>
<u>Minus 3/8" x 28m Fraction</u>													
1.300 F	28.17	4 1/2	2.06	0.84	22.21	75.73	15094	28.17	2.06	0.84	22.21	75.73	15094
1.350 F	34.52	1	4.48	0.79	22.30	73.22	14630	62.69	3.39	0.81	22.26	74.35	14838
1.400 F	9.92	1 1/2	10.28	0.80	22.50	67.22	13626	72.61	4.33	0.81	22.29	73.38	14673
1.450 F	3.81	1	14.95	0.80	24.04	61.01	12637	76.42	4.86	0.81	22.38	72.76	14571
1.500 F	3.16	0	19.25	0.72	22.28	58.47	11948	79.58	5.43	0.81	22.38	72.19	14467
1.550 F	1.29	0	22.12	0.81	27.75	50.13	11004	80.87	5.70	0.81	22.46	71.84	14412
1.600 F	1.02	0	25.41	0.79	31.41	43.18	10243	81.89	5.95	0.81	22.57	71.48	14360
1.600 S	18.11	0	57.70	0.72	38.60	3.70	2924	100.00	15.32	0.79	25.48	59.20	12289
<u>Total</u>	100.00		15.32	0.79	25.48	59.20	12289						

Flotation Test on -28m Fraction

<u>Product</u>	<u>% Weight</u>	<u>Elementary Data</u>						<u>% Distribution</u>				
		<u>FSI</u>	<u>% Ash</u>	<u>% S</u>	<u>% VM</u>	<u>% FC</u>	<u>Btu</u>	<u>Ash</u>	<u>S</u>	<u>VM</u>	<u>FC</u>	<u>Btu</u>
Conc. I	57.52	2	6.66	0.79	26.65	66.69	14120	20.86	71.84	65.08	66.05	69.69
Conc. II	26.70	2	14.03	0.17	25.67	60.30	12671	20.39	7.12	29.10	27.72	29.03
Rejects	15.78	0	68.39	0.84	8.68	22.93	942	58.75	21.04	5.82	6.23	1.28
<u>Total</u>	100.00		18.37	0.63	23.55	58.08	11654	100.00	100.00	100.00	100.00	100.00

South Point Results

Hole SMG 79-10

Head Analysis

Sample No.	Depth	No. of Meters	Air Dry Basis								Moisture Free Basis				
			Grams Rec'd	% H ₂ O	% Ash	% S	% VM	% FC	Btu	FSI	% Ash	% S	% VM	% FC	Btu
1	42.88- 43.56	0.68	1992	0.97	13.70	1.02	23.59	61.74	13097	8	13.83	1.03	23.82	62.35	13225
2	49.15- 51.03	1.88	5615	1.20	9.79	0.76	25.61	63.40	13137	3	9.91	0.77	25.92	64.17	13297
3	67.87- 68.54	0.67	1645	0.63	31.84	0.73	20.86	46.67	9562	5 1/2	32.04	0.73	20.99	46.97	9623
4	86.20- 87.17	0.97	2990	1.21	37.25	0.68	15.53	46.01	8907	1/2	37.71	0.69	15.72	46.57	9016
5	184.04-184.71	0.67	1420	1.04	3.31	0.74	21.46	74.19	14587	1 1/2	3.34	0.75	21.69	74.97	14740
6	185.42-186.50	1.08	3550	1.35	6.73	0.69	21.56	70.36	13871	1/2	6.82	0.70	21.86	71.32	14061
7	187.49-189.28	1.79	4920	0.89	12.76	0.89	23.60	62.75	12976	2 1/2	12.87	0.90	23.81	63.32	13093

Structures

Size	Sample #2		Sample #4		Sample #6		Sample #7	
	% Weight	Cum. % Weight	% Weight	Cum. % Weight	% Weight	Cum. % Weight	% Weight	Cum. % Weight
+1/4"	31.52	31.52	26.93	26.93	28.38	28.38	30.30	30.30
+6 m	30.64	62.16	26.79	53.72	27.86	56.24	30.03	60.33
+10 m	15.87	78.03	15.27	68.99	12.63	68.87	16.67	77.00
+28 m	12.23	90.26	14.21	83.20	13.30	82.17	13.09	90.09
-28 m	9.74	100.00	16.80	100.00	17.83	100.00	9.91	100.00
<u>Total</u>	100.00		100.00		100.00		100.00	

South Mount Gething
Hole SMG 79-10
Single Gravity Tests

Moisture Free Basis

Product and Sp. Gr.	% Weight	Elementary Data						% Distribution				
		FSI	% Ash	% S	% VM	% FC	Btu	Ash	S	VM	FC	Btu
<u>Sample #1 3/8" x 0</u>												
1.400 F	82.46	9	2.09	1.14	26.96	70.95	15148	13.00	93.53	91.12	93.84	93.45
1.400 S	17.54	1	65.76	0.37	12.35	21.89	4988	87.00	6.47	8.88	6.16	6.55
<u>Total</u>	100.00		13.26	1.01	24.40	62.34	13366	100.00	100.00	100.00	100.00	100.00
<u>Sample #2 3/8" x 0</u>												
1.400 F	79.41	3 1/2	2.25	0.82	22.96	74.79	15024	17.60	87.27	68.42	93.97	90.35
1.400 S	20.59	0	40.62	0.46	40.88	18.50	6189	82.40	12.73	31.58	6.03	9.65
<u>Total</u>	100.00		10.15	0.75	26.65	63.20	13205	100.00	100.00	100.00	100.00	100.00
<u>Sample #3 3/8" x 0</u>												
1.400 F	59.88	8	3.67	1.07	25.17	71.16	14857	7.20	84.68	70.34	88.70	91.30
1.400 S	40.12	0	70.63	0.29	15.84	13.53	2144	92.80	15.32	29.66	11.30	8.70
<u>Total</u>	100.00		30.54	0.76	21.43	48.03	9744	100.00	100.00	100.00	100.00	100.00
<u>Sample #4 3/8" x 0</u>												
1.400 F	55.96	1	5.10	0.85	20.75	74.15	14571	7.84	71.04	69.76	88.36	89.92
1.400 S	44.04	0	76.16	0.44	11.43	12.41	2076	92.16	28.96	30.24	11.64	10.08
<u>Total</u>	100.00		36.40	0.67	16.65	46.95	9068	100.00	100.00	100.00	100.00	100.00

South Mount Gething
Hole SMG 79-10
Single Gravity Tests

Moisture Free Basis

<u>Product and Sp. Gr.</u>	<u>% Weight</u>	<u>Elementary Data</u>						<u>% Distribution</u>				
		<u>FSI</u>	<u>% Ash</u>	<u>% S</u>	<u>% VM</u>	<u>% FC</u>	<u>Btu</u>	<u>Ash</u>	<u>S</u>	<u>VM</u>	<u>FC</u>	<u>Btu</u>
<u>Sample #5 3/8" x 0</u>												
1.400 F	96.03	1	1.97	0.78	21.84	76.19	14904	53.13	97.40	97.34	97.69	97.65
1.400 S	3.97	0	42.03	0.51	14.46	43.51	8669	46.87	2.60	2.66	2.31	2.35
<u>Total</u>	100.00		3.56	0.77	21.55	74.89	14656	100.00	100.00	100.00	100.00	100.00
<u>Sample #6 3/8" x 0</u>												
1.400 F	89.88	1	3.40	0.71	21.31	75.29	14798	46.83	92.73	87.24	94.62	93.88
1.400 S	10.12	0	34.29	0.49	27.69	38.02	8565	53.17	7.27	12.76	5.38	6.12
<u>Total</u>	100.00		6.53	0.69	21.96	71.51	14167	100.00	100.00	100.00	100.00	100.00
<u>Sample #7 3/8" x 0</u>												
1.400 F	77.07	4	4.02	0.96	22.08	73.90	14708	24.95	83.24	71.05	89.51	86.46
1.400 S	22.93	1	40.65	0.65	30.24	29.11	7739	75.05	16.76	28.95	10.49	13.54
<u>Total</u>	100.00		12.42	0.89	23.95	63.63	13110	100.00	100.00	100.00	100.00	100.00

Hole SMG 79-10
Sample #2
 49.15-51.03 Meters
Washability Test

Moisture Free Basis													
Product and Sp. Gr.	% Weight	Elementary Data						Cumulative Data					
		FSI	% Ash	% S	% VM	% FC	Btu	% Weight	% Ash	% S	% VM	% FC	Btu
<u>Minus 3/8" x 28m Fraction</u>													
1.300 F	39.79	7 1/2	2.04	0.92	23.73	74.23	15201	39.79	2.04	0.92	23.73	74.23	15201
1.350 F	37.95	1	2.78	0.74	23.66	73.56	14999	77.74	2.40	0.83	23.70	73.90	15102
1.400 F	1.91	1	9.18	0.89	23.68	67.14	13830	79.65	2.56	0.83	23.69	73.75	15071
1.450 F	1.12	1 1/2	15.02	0.95	26.30	58.68	12652	80.77	2.74	0.84	23.73	73.53	15038
1.500 F	1.17	1	18.85	0.90	26.21	54.94	11877	81.94	2.97	0.84	23.77	73.26	14993
1.550 F	1.05	1	22.55	0.81	28.19	49.26	10874	82.99	3.21	0.84	23.82	72.97	14940
1.600 F	0.94	0	26.12	0.73	32.40	41.48	10161	83.93	3.47	0.84	23.92	72.61	14887
1.600 S	16.07	0	46.95	0.35	44.82	8.23	4621	100.00	10.46	0.76	27.28	62.26	13238
<u>Total</u>	100.00		10.46	0.76	27.28	62.26							

Flotation Test on -28m Fraction

Product	% Weight	Elementary Data						% Distribution				
		FSI	% Ash	% S	% VM	% FC	Btu	Ash	S	VM	FC	Btu
Conc. I	70.73	3 1/2	5.02	0.85	24.41	70.57	14400	40.53	72.32	68.11	75.75	75.13
Conc. II	25.90	1 1/2	11.74	0.77	26.61	61.65	12799	34.71	23.95	27.19	24.23	24.45
Rejects	3.37	0	64.38	0.92	35.34	0.28	1686	24.76	3.73	4.70	0.02	0.42
<u>Total</u>	100.00		8.76	0.83	25.35	65.89	13557	100.00	100.00	100.00	100.00	100.00

South Mount Gething

Hole SMG 79-10

Sample #4

86.20-87.17 Meters

Washability Test

Moisture Free Basis

<u>Product and Sp. Gr.</u>	<u>% Weight</u>	<u>Elementary Data</u>						<u>Cumulative Data</u>					
		<u>FSI</u>	<u>% Ash</u>	<u>% S</u>	<u>% VM</u>	<u>% FC</u>	<u>Btu</u>	<u>% Weight</u>	<u>% Ash</u>	<u>% S</u>	<u>% VM</u>	<u>% FC</u>	<u>Btu</u>
<u>Minus 3/8" x 28m Fraction</u>													
1.300 F	5.97	5	1.38	1.00	22.84	75.78	15208	5.97	1.38	1.00	22.84	75.78	15208
1.350 F	34.20	1	3.40	0.83	20.83	75.77	14871	40.17	3.10	0.86	21.13	75.77	14847
1.400 F	14.38	0	8.95	0.73	19.49	71.56	13491	54.55	4.64	0.82	20.70	74.66	14489
1.450 F	2.77	0	13.73	0.75	20.07	66.20	12902	57.32	5.08	0.82	20.67	74.25	14412
1.500 F	0.88	0	18.41	0.77	20.20	61.39	12055	58.20	5.28	0.82	20.66	74.06	14376
1.550 F	0.43	0	26.26	0.87	21.55	52.19	10751	58.89	5.53	0.82	20.67	73.80	14334
1.600 F	0.26												
1.600 S	41.11	0	87.53	0.65	9.44	3.03	974	100.00	39.24	0.66	16.06	44.70	8841
<u>Total</u>	100.00		39.24	0.66	16.06	44.70	8841						

Flotation Test on -28m Fraction

<u>Product</u>	<u>% Weight</u>	<u>Elementary Data</u>						<u>% Distribution</u>				
		<u>FSI</u>	<u>% Ash</u>	<u>% S</u>	<u>% VM</u>	<u>% FC</u>	<u>Btu</u>	<u>Ash</u>	<u>S</u>	<u>VM</u>	<u>FC</u>	<u>Btu</u>
Conc. I	60.38	1	8.31	0.91	21.55	70.14	13847	17.78	77.00	74.53	77.97	79.27
Conc. II	17.74	0	21.48	0.78	19.38	59.14	11595	13.50	19.35	19.69	19.31	19.50
Rejects	21.88	0	88.65	0.12	4.61	6.74	592	68.72	3.65	5.78	3.72	1.23
<u>Total</u>	100.00		28.23	0.71	17.46	54.31	10548	100.00	100.00	100.00	100.00	100.00

South Mount Gething
Hole SMG 79-10
Sample #6
 185.42-186.50 Meters
Washability Test

Product and Sp. Gr.	% Weight	Moisture Free Basis											
		Elementary Data						Cumulative Data					
		FSI	% Ash	% S	% VM	% FC	Btu	% Weight	% Ash	% S	% VM	% FC	Btu
<u>Minus 3/8" x 28m Fraction</u>													
1.300 F	17.46	2 1/2	2.28	0.74	22.45	75.27	15018	17.46	2.28	0.74	22.45	75.27	15018
1.350 F	64.33	1/2	3.52	0.68	21.62	74.86	14826	81.79	3.25	0.69	21.80	74.95	14867
1.400 F	8.94	1/2	8.36	0.62	21.99	69.65	13908	90.73	3.76	0.68	21.82	74.42	14772
1.450 F	2.65	1/2	12.83	0.60	25.76	61.41	12775	93.38	4.01	0.68	21.93	74.06	14716
1.500 F	0.92	1	16.63	0.60	24.88	58.49	12342	94.30	4.14	0.68	21.96	73.90	14694
1.550 F	0.74	0	18.42	0.58	26.82	54.76	11587	95.04	4.25	0.68	21.99	73.76	14670
1.600 F	0.53	0	23.19	0.53	29.23	47.58	10468	95.57	4.35	0.68	22.04	73.61	14646
1.600 S	4.43	0	54.08	0.26	31.05	14.87	4826	100.00	6.56	0.66	22.44	71.00	14211
<u>Total</u>	100.00		6.56	0.66	22.44	71.00	14211						

Flotation Test on -28m Fraction

Product	% Weight	Elementary Data						% Distribution				
		FSI	% Ash	% S	% VM	% FC	Btu	Ash	S	VM	FC	Btu
Conc. I	76.40	1	3.37	0.70	22.28	74.35	14664	35.69	78.22	76.22	80.63	80.65
Conc. II	19.45	0	9.79	0.57	21.76	68.45	13377	26.39	16.23	18.95	18.90	18.73
Rejects	4.15	0	65.93	0.92	26.02	8.05	2065	37.92	5.55	4.83	0.47	0.62
<u>Total</u>	100.00		7.22	0.68	22.33	70.45	13891	100.00	100.00	100.00	100.00	100.00

South Mount Gething

Hole SMG 79-10

Sample #7

187.49-189.28 Meters

Washability Test

Product and Sp. Gr.	% Weight	Elementary Data						Cumulative Data					
		FSI	% Ash	% S	% VM	% FC	Btu	% Weight	% Ash	% S	% VM	% FC	Btu
<u>Minus 3/8" x 28m Fraction</u>													
1.300 F	10.13	8	2.18	1.02	24.32	73.50	15056	10.13	2.18	1.02	24.32	73.50	15056
1.350 F	53.90	4	3.35	0.89	23.59	73.06	14801	64.03	3.17	0.91	23.71	73.12	14841
1.400 F	12.60	3 1/2	10.20	0.89	21.88	67.92	13885	76.63	4.32	0.91	23.41	72.27	14685
1.450 F	4.95	4 1/2	16.93	0.83	21.33	61.74	12615	81.58	5.09	0.90	23.28	71.63	14559
1.500 F	3.75	4 1/2	23.57	0.81	21.60	54.83	11706	85.33	5.90	0.90	23.21	70.89	14433
1.550 F	1.78	4	26.84	0.81	22.99	50.17	10934	87.11	6.33	0.90	23.20	70.47	14362
1.600 F	0.98	3	31.37	0.75	22.73	45.90	10197	88.09	6.61	0.89	23.20	70.19	14316
1.600 S	11.91	0	55.03	0.58	34.02	10.95	4732	100.00	12.37	0.86	24.49	63.14	13175
<u>Total</u>	100.00		12.37	0.86	24.49	63.14	13175						

Flotation Test on -28m Fraction

Product	% Weight	Elementary Data						% Distribution				
		FSI	% Ash	% S	% VM	% FC	Btu	Ash	S	VM	FC	Btu
Conc. I	63.10	3	5.81	0.93	23.12	71.07	14383	37.53	65.88	62.51	67.04	66.65
Conc. II	34.32	2	12.85	0.85	23.45	63.70	13005	45.15	32.77	34.48	32.68	32.78
Rejects	2.58	0	65.59	0.47	27.17	7.24	3042	17.32	1.35	3.01	0.28	0.57
<u>Total</u>	100.00		9.77	0.89	23.34	66.89	13617	100.00	100.00	100.00	100.00	100.00