

**OPEN FILE**

1976 DIAMOND DRILLING  
SUKUNKA PROPERTY  
COAL LICENCE #3089-3090  
3094-3096  
3100-3103  
3110

SUKUNKA RIVER AREA (93 P/4E, 93 P/5E)

by  
R. S. Verzosa, P.Eng.

For  
TECK CORPORATION LIMITED  
AND  
BRAMEDA RESOURCES LIMITED

**GEOLOGICAL BRANCH  
ASSESSMENT REPORT**

00 662

December, 1976

<p>MINING RECORDER RECEIVED and RECORDED</p> <p>DEC 20 1976</p> <p>M.R. #..... VICTORIA, B. C.</p>
--

Vancouver, B. C.

TABLE OF CONTENTS

	<u>Page</u>
Introduction	1
Diamond Drilling	1
General Geology	2

LIST OF ILLUSTRATIONS

Figure 1	Location Map	After page 1
Figure 2	Drill Hole Location Plan	Pocket
Figure 3	Regional Geology	Pocket
	Stratigraphic Logs of SK-1, SK-2, SK-3, WDH-12, 16 and 17	Pocket

## INTRODUCTION

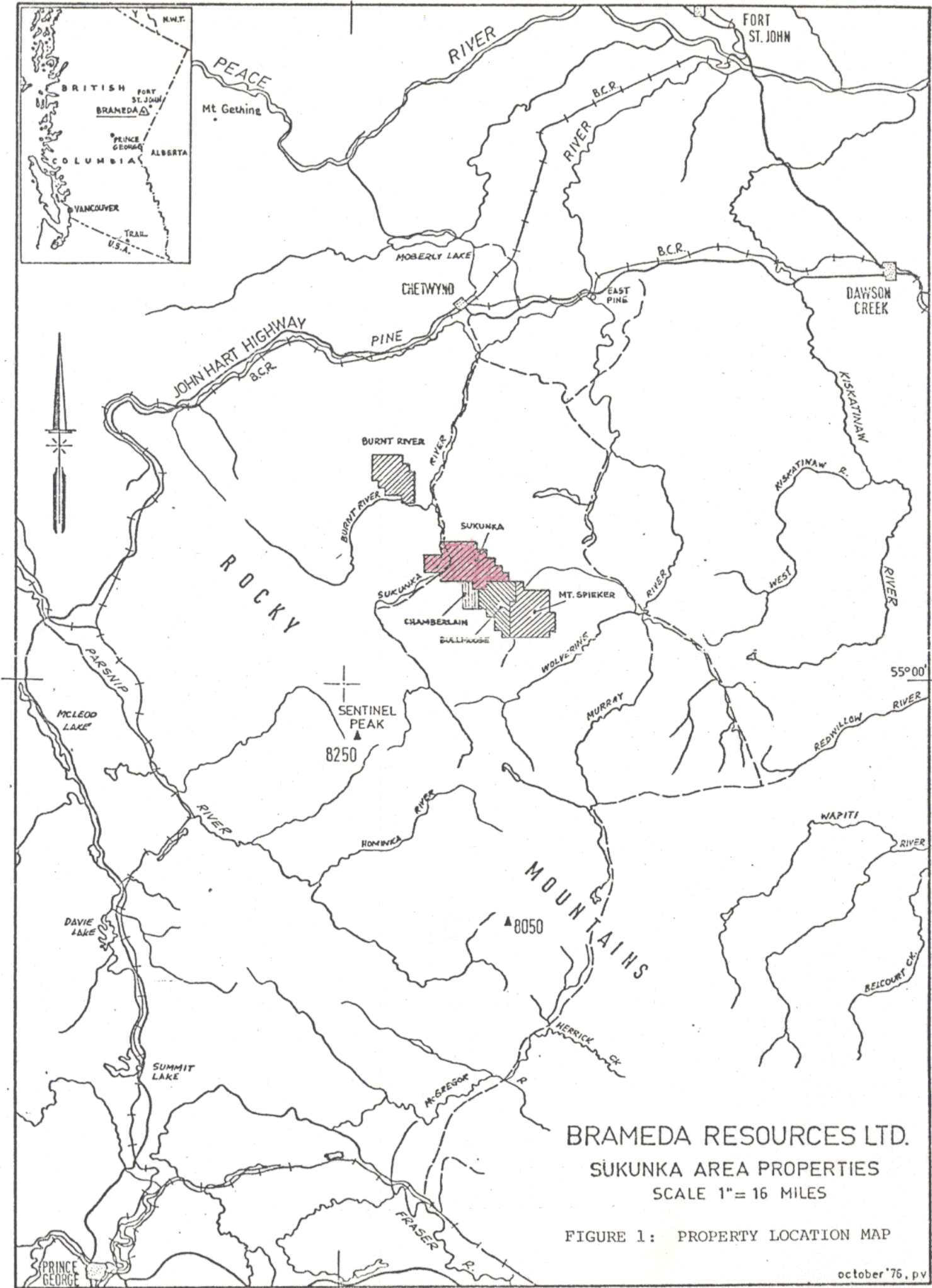
During the period August 22, 1976 to September 8, 1976 and from October 23, 1976 to November 6, 1976 a drilling program was carried out by Teck Corporation Limited on the Sukunka coal property (Figure 1) of Brameda Resources Limited. The object of the program was to test an area north of Skeeter Creek for potential stripping coal in the Gething Formation.

Prior to the drilling program a reconnaissance mapping of the area indicated the occurrence of the Skeeter and Chamberlain seams at shallow depths. The drilling that followed verified this although the thickness of the Skeeter seam was nowhere near the 8 to 10 foot seam exposed by trenching in previous programs south of Skeeter Creek.

## DIAMOND DRILLING

The initial three holes SK-1 to SK-3 were drilled by Connors Drilling Limited of Vancouver with a skid mounted Longyear 38 using a NQ core bit. Three additional holes, WDH-12 and WDH 16-17 were drilled by Spillsbury and Dietz of Spokane, Washington using a manually portable Winkie drill and an AX core bit. Two of the winkie holes were helicopter supported. A total of 816 feet in three NQ holes and <sup>563</sup> 420 feet in three Winkie holes were drilled. The drill hole locations are shown in Figure 2.

122°



BRAMEDA RESOURCES LTD.  
 SUKUNKA AREA PROPERTIES  
 SCALE 1" = 16 MILES

FIGURE 1: PROPERTY LOCATION MAP



GENERAL GEOLOGY

The area north of Skeeter Creek near the northern edge of the Sukunka property is underlain by the Moosebar and Gething Formations of the Lower Cretaceous Bullhead Group (Figure 3). The area is structurally complex although in some places and in between faults gently-dipping beds of the Gething are present. Here and there, along steep slopes and ledges coal spoils from both the Skeeter and Chamberlain seams can be found.

Of the six holes drilled in the area only four intersected the Skeeter and Chamberlain seams. The Bird seam is notably absent. The Skeeter seam range in thickness from one foot to 4.4 feet while the Chamberlain range from 5 to 8 feet.

Not enough coal samples were available for analysis due to excessive core losses. However, whatever cores were recovered appeared typical of the hard and bright high quality Skeeter and Chamberlain seams of the Sukunka area.

Both drill holes SK-3 and WDH-17 were discontinued during drilling because of unfavourable results.

Respectfully submitted,

GEOPHYSICAL ENGINEERING LIMITED



PR-SUKUNKA 76(2)B

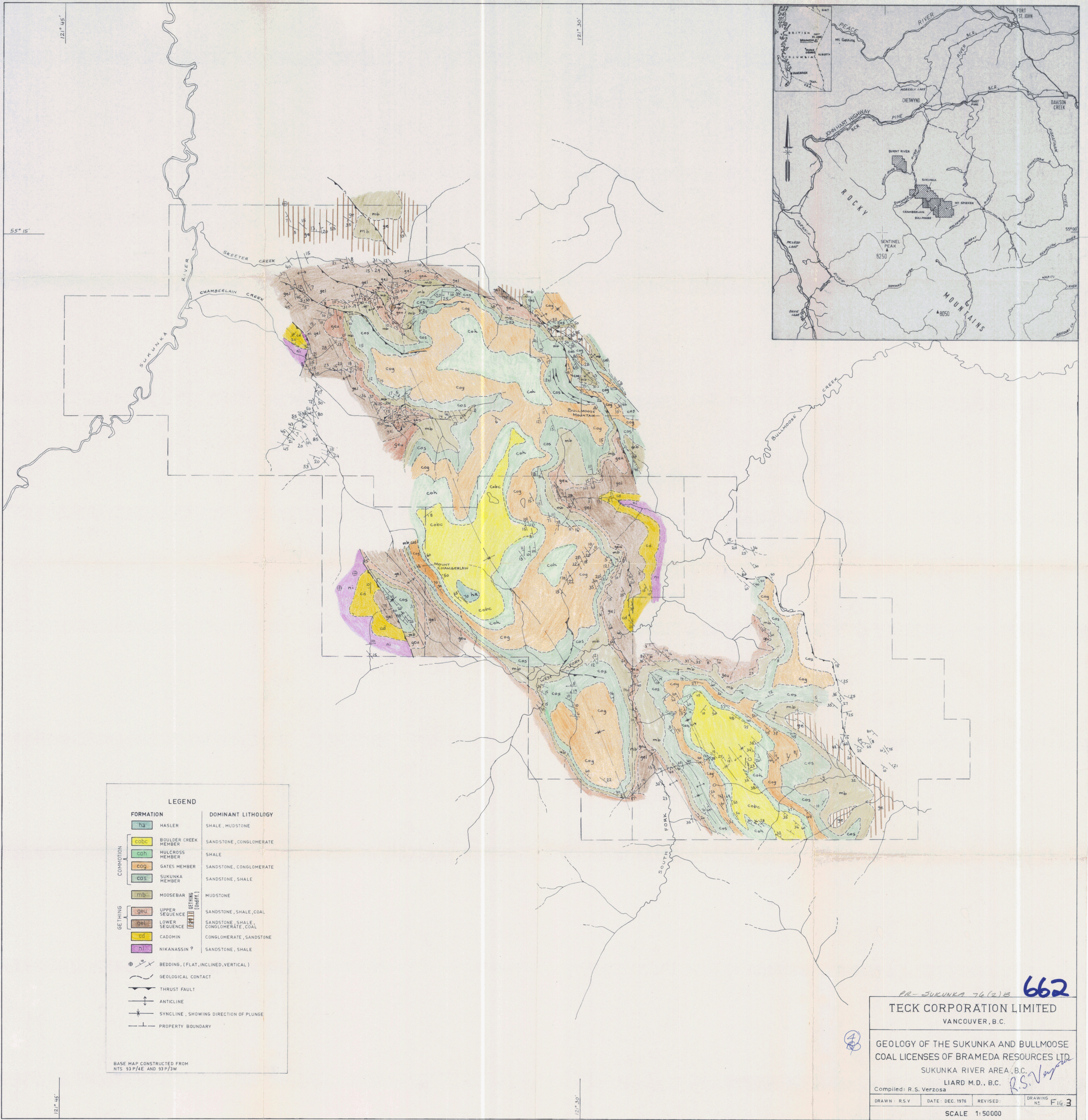
1976 DIAMOND DRILLING

SUKUNKA PROPERTY  
(MAPS)

R.S. VERZOSA

DECEMBER 1976





**LEGEND**

FORMATION	DOMINANT LITHOLOGY
ha	HASLER SHALE, MUDSTONE
cobc	BOULDER CREEK MEMBER SANDSTONE, CONGLOMERATE
coh	HULCROSS MEMBER SHALE
cog	GATES MEMBER SANDSTONE, CONGLOMERATE
cos	SUKUNKA MEMBER SANDSTONE, SHALE
mb	MOOSEBAR MUDSTONE
geu	UPPER SEQUENCE SANDSTONE, SHALE, COAL
gel	LOWER SEQUENCE SANDSTONE, SHALE, CONGLOMERATE, COAL
cd	CADOMIN CONGLOMERATE, SANDSTONE
ni	NIKANASSIN ? SANDSTONE, SHALE

	BEDDING, (FLAT, INCLINED, VERTICAL)
	GEOLOGICAL CONTACT
	THRUST FAULT
	ANTICLINE
	SYNCLINE, SHOWING DIRECTION OF PLUNGE
	PROPERTY BOUNDARY

BASE MAP CONSTRUCTED FROM  
NTS 93P/AE AND 93P/3W

PR-SUKUNKA 76(2)B **662**

**TECK CORPORATION LIMITED**  
VANCOUVER, B.C.

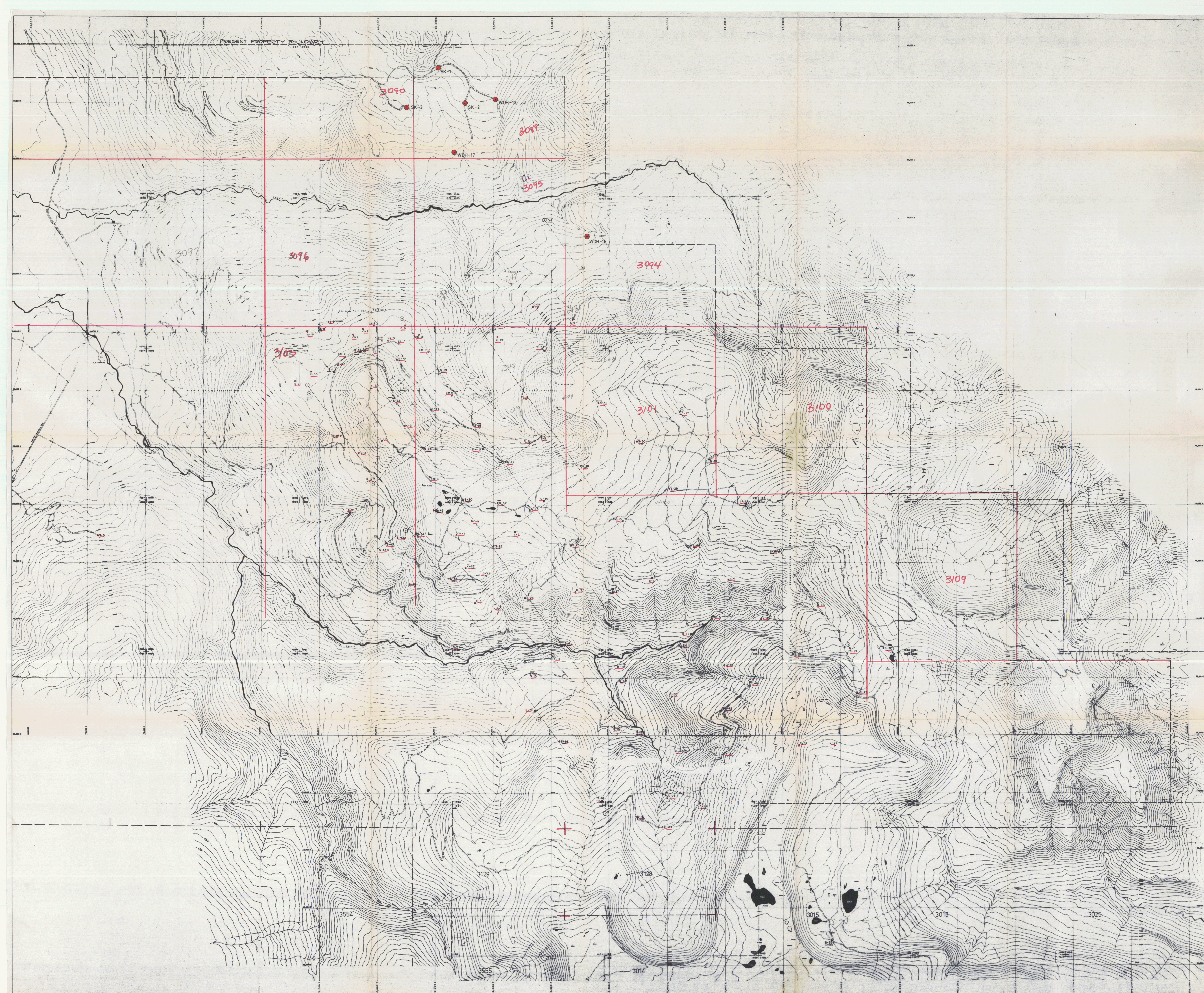
GEOLOGY OF THE SUKUNKA AND BULLMOOSE  
COAL LICENSES OF BRAMEDA RESOURCES LTD.  
SUKUNKA RIVER AREA, B.C.  
LIARD M.D., B.C. *R.S. Verzosa*

Compiled: R. S. Verzosa

DRAWN: R.S.V.	DATE: DEC. 1976	REVISED:	DRAWING NO. F16.3
---------------	-----------------	----------	-------------------

SCALE 1:50000





- LEGEND
- SK-1 DIAMOND DRILLHOLE (1976 PROGRAM)
  - WDH-17 WINKIE DRILLHOLE
  - C-26 DIAMOND DRILLHOLE (PREVIOUS PROGRAM)
  - S-22

662

**BRAMEDA RESOURCES LIMITED**  
 SUKUNKA, CHETWYND, B.C.

PC-SUKUNKA 76(2)B, FIG. 2

LIARD M.D.

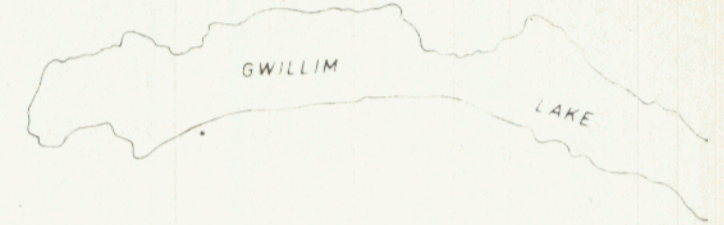
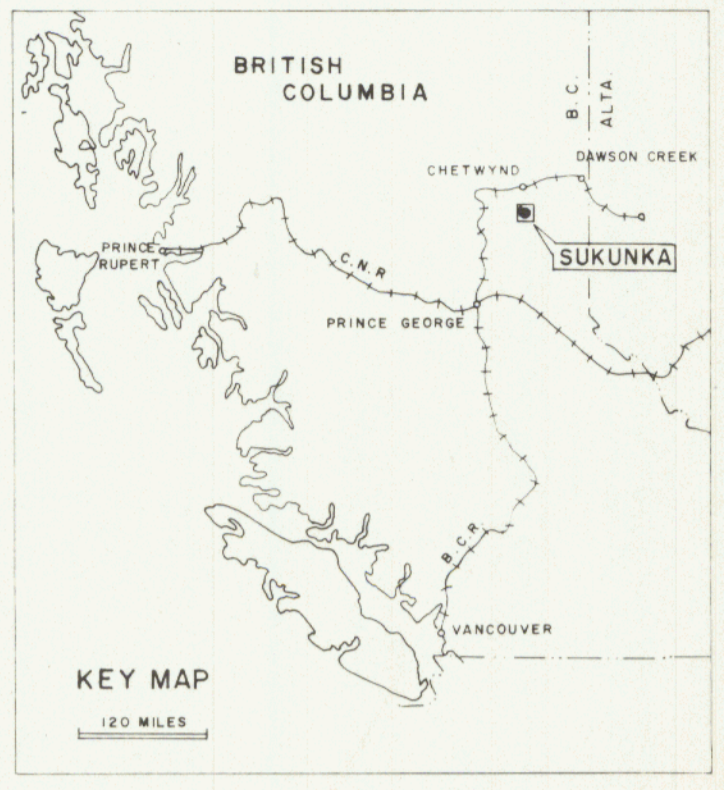
**DRILL HOLE LOCATION PLAN**  
 1976 PROGRAM

R.S. [Signature]

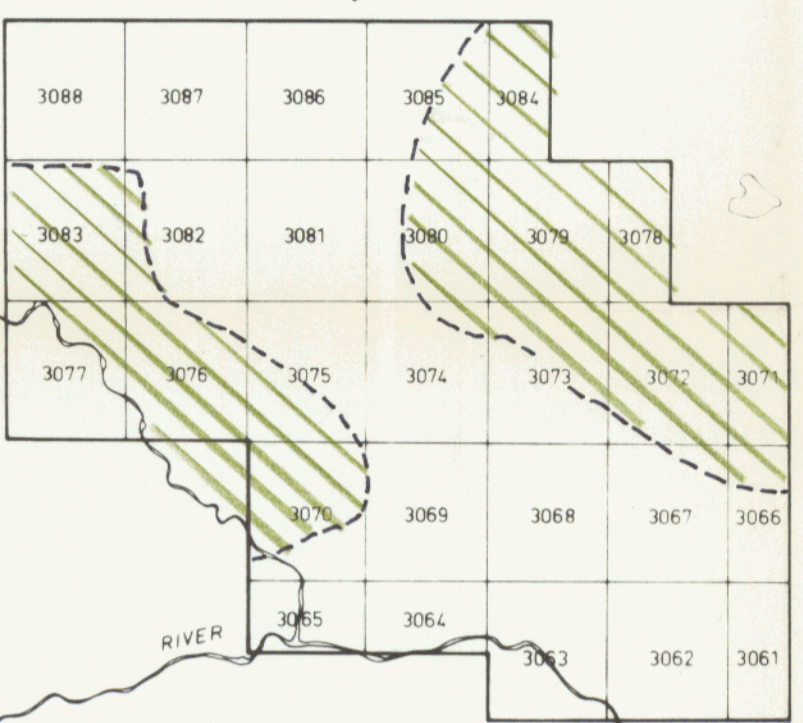
Scale 1" = 1000'

REVIS: DATE: Dec 1976 DRAWN: DATE:

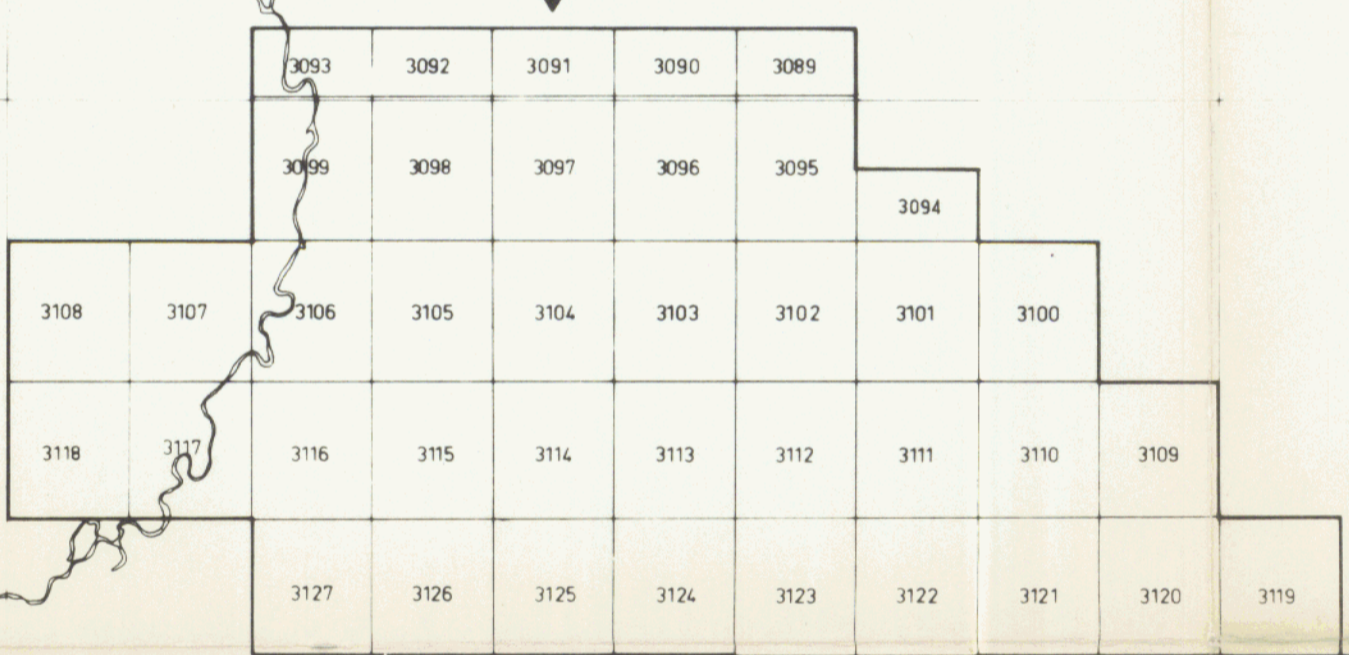




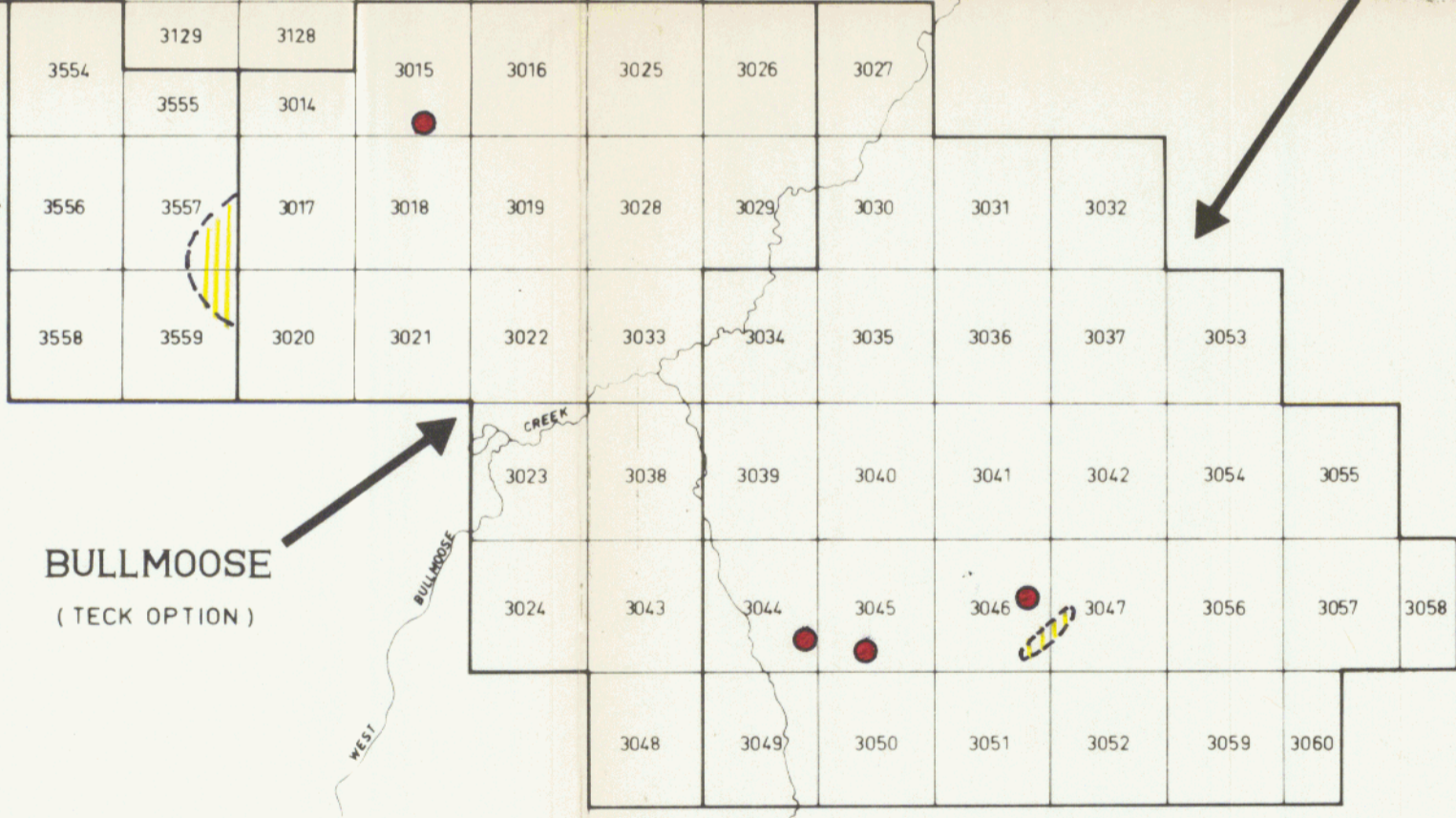
BURNT RIVER



SUKUNKA  
(BRASCAN OPTION)



CHAMBERLAIN  
(TECK - BRAMEDA)



MOUNT SPIEKER  
(NICHIMEN OPTION)

BULLMOOSE  
(TECK OPTION)

LEGEND

- DIAMOND DRILLING IN 1975
- AREA WHERE SEAMTRACING AND TRENCHING WERE DONE IN 1975
- AREA COVERED BY RECONNAISSANCE MAPPING IN 1975

662

*PR Sukunka 76(2)B*

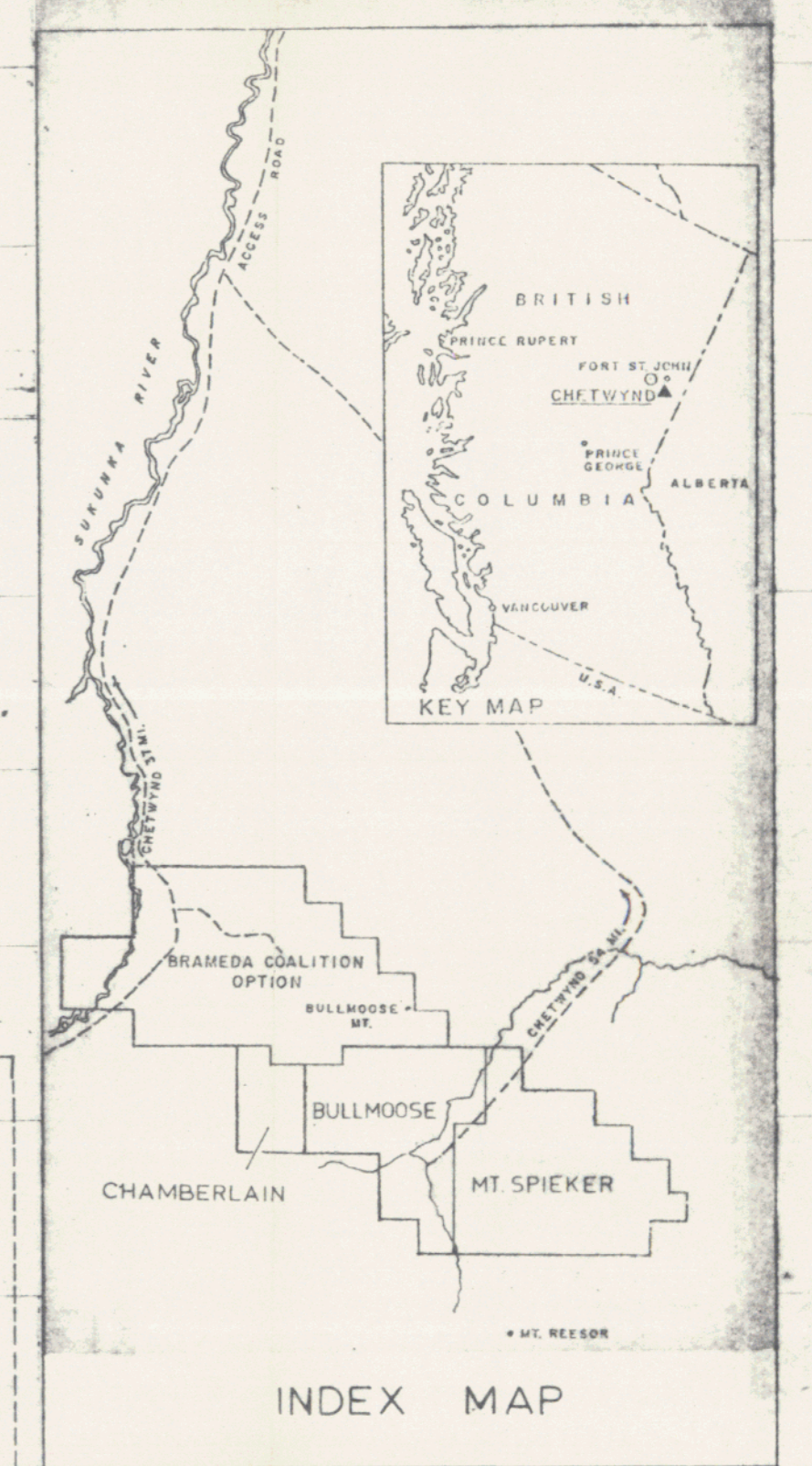
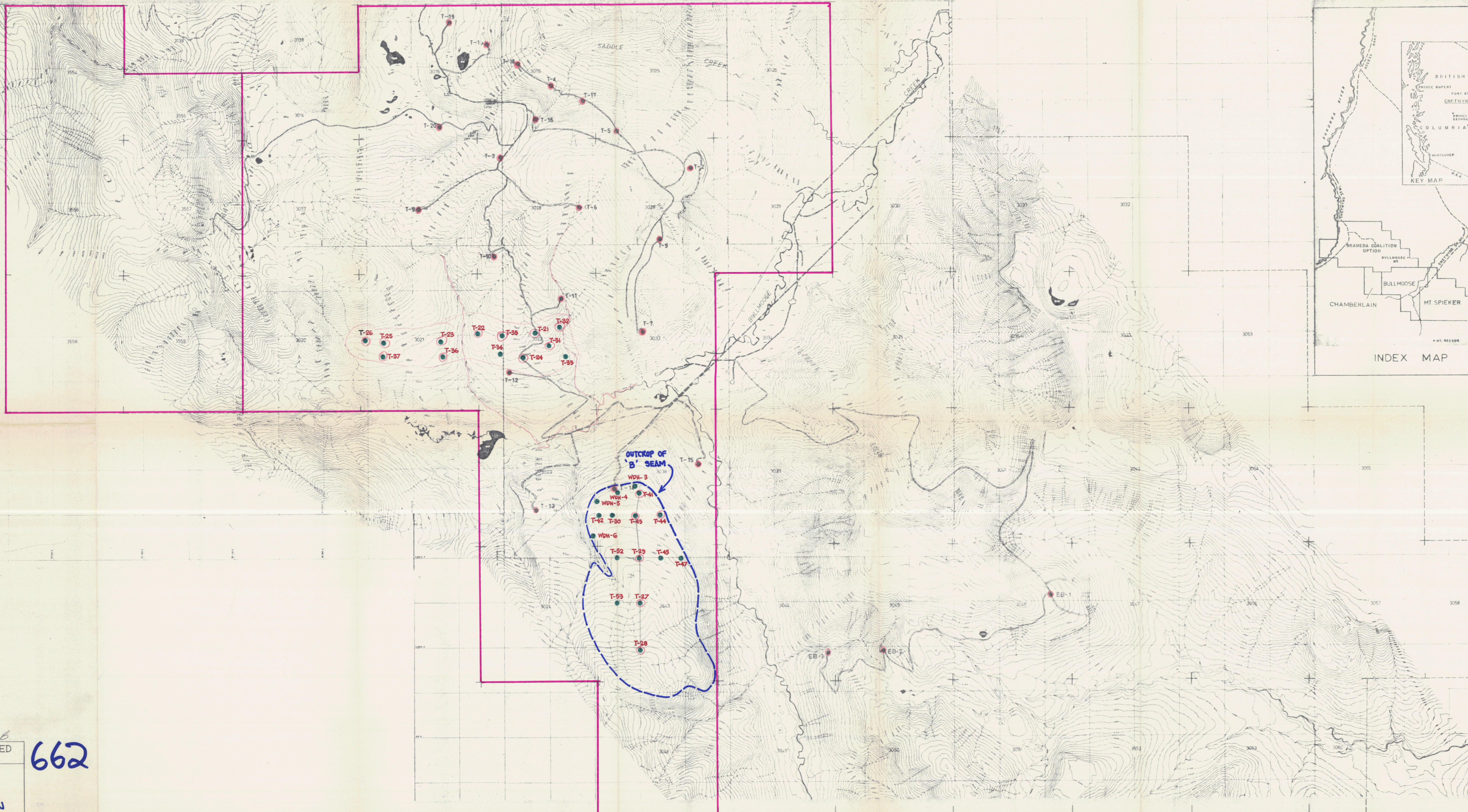
**BRAMEDA RESOURCES LIMITED**  
VANCOUVER BC.

**COAL LICENSES**  
SUKUNKA COAL AREA

1:50,000

DATE DRAWN AUG '75/PV	DATE REVISED	JOB NO. 1201	DRAWING NO. 93-P-BR-G 108A
--------------------------	--------------	-----------------	-------------------------------





M. Sukunka 76(c)B  
BRAMEDA RESOURCES LIMITED  
SUKUNKA COAL AREA

662

1976  
DRILL HOLE LOCATION PLAN