



BOREHOLE BP #50 - Sukunka 1978
 CLIENT BP Coal

AREA B.C.
 COUNTRY Canada

DATE LOGGED 8 JULY 1978

DEPTH SCALE 1:200

COAL LITHOLOGY LOG

SONDE TYPE: **665**

COAL COMBINATION

LOG SUITE: GAMMA RAY, L.S. DENSITY, CALIPER

OPERATION DATA: FIRST READING, LAST READING, INTERVAL LOGGED, DATE LOGGED, ENGINEER, WITNESS

BOREHOLE DATA

PERMANENT DATA: ELEVATION OF P.D., MASS BURNING HEAT, DEPTH REACHED, CASING SIZE, BIT SIZES, CASING SIZES, FLUID DATA

SONDE TYPE: **665**

OPERATION DATA: FIRST READING, LAST READING, INTERVAL LOGGED, DATE LOGGED, ENGINEER, WITNESS

LOG	EQUIPMENT	SOURCE	CALIBRATOR	LOG TAPED	TAPING RECORD	DIRECT REPLAY	PANEL SPEED	T.C. SECS	CAL. COEFF.	DEPTHS FROM	DEPTHS TO	SEAM LOG RUN	
GAMMA RAY	110		3	Y	9	D	9	1	1.3	305	5	300	Y
DENSITY			42	Y	9	D	9	1/3	7.55	305	5	300	Y
CALIPER				Y	9	R	9	1/3	-	305	5	300	Y

COAL QUALITY/SEAM THICKNESS LOG INTERVALS (Refer to relevant log)	INTERVAL TOTAL
FROM 287 TO 281	209
TO 273 TO 267	204
INTERVAL 6	6
	5
	17m

SONDE	LOG	GENERAL SCALE LOG	DETAIL SCALE LOG	REFER TO ADDITIONAL HEADINGS	REMARKS
81	N-N	1:200			LSD trace not drawn above water level for clarity.

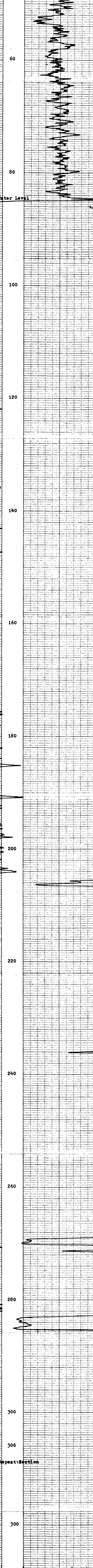
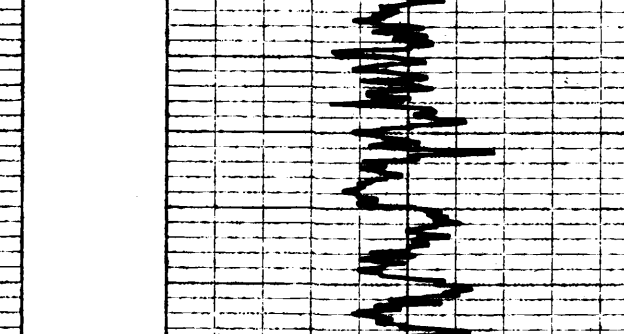
B P B COAL LITHOLOGY LOG

CALIBRATION DATA

JIG No 3	VALU 300 @ 2" DIAM	JIG CAL DATE 1/7/78	JIG VALUE 3250 SDU @ 1.56 g/cm ³	7 ins 945 cps
JIG MARK SHOWN AT ABOVE VALUE -3.3		JIG No 42	SPAN 6000	NORM 880 CPS = 7.55

GAMMA RAY	DEPTH	COAL BULK DENSITY	CALIPER
-----------	-------	-------------------	---------

HOLE SIZE CORRECTION DATA



GAMMA RAY	DEPTH	COAL BULK DENSITY	CALIPER
-----------	-------	-------------------	---------

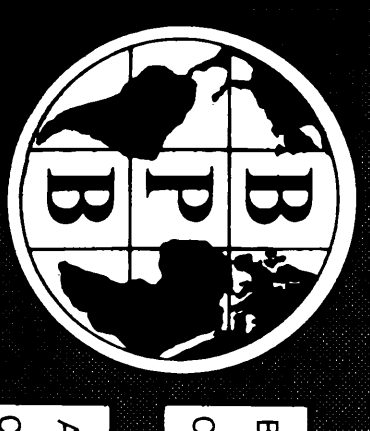
COAL LITHOLOGY LOG



BOREHOLE BP #50 - Sukunka 1978
 CLIENT BP Coal

AREA B.C.
 COUNTRY Canada

COAL LITHOLOGY LOG



BP - SUKUNKA 78(3) JA

BOREHOLE BP #50 - Sukunka 1978
CLIENT BP Coal

AREA B.C.
COUNTRY Canada

DATE LOGGED 8 July '78

DEPTH SCALE
1:20

3 of 4 LOGS

BOREHOLE DATA REFER TO LITHOLOGY LOG

OPERATION DATA REFER TO LITHOLOGY LOG

EQUIPMENT AND RECORDING DATA

COAL COMBINATION SONDE SIDEWALL POSITION

LOG TAPPING PANEL CODE
LOG RECORD SPEED 1500 RPM
CALIPER I 1 R 2 I 1
BI DENSITY X 1 R 2 I 1
SOURCE SONDE AND CALIBRATION
REFER TO LITHOLOGY LOG

SEAM THICKNESS LOG INTERVALS

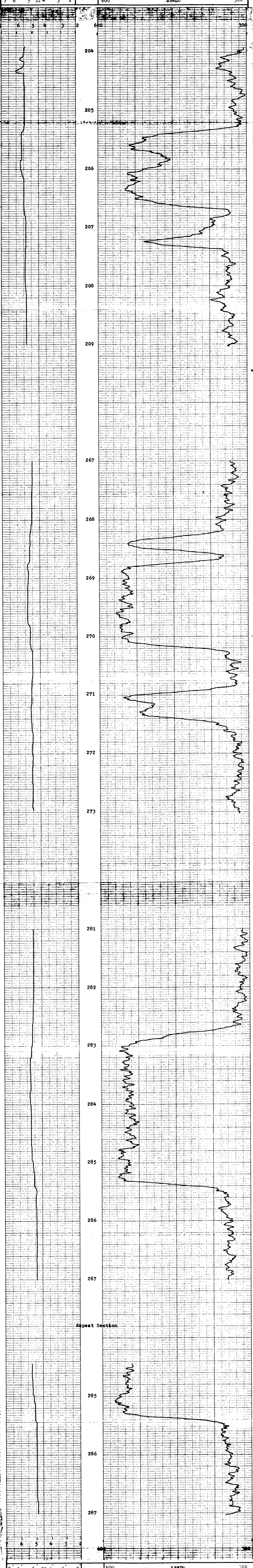
COAL COMBINATION SONDE

LOG SUITE:
CALIPER
BR DENSITY

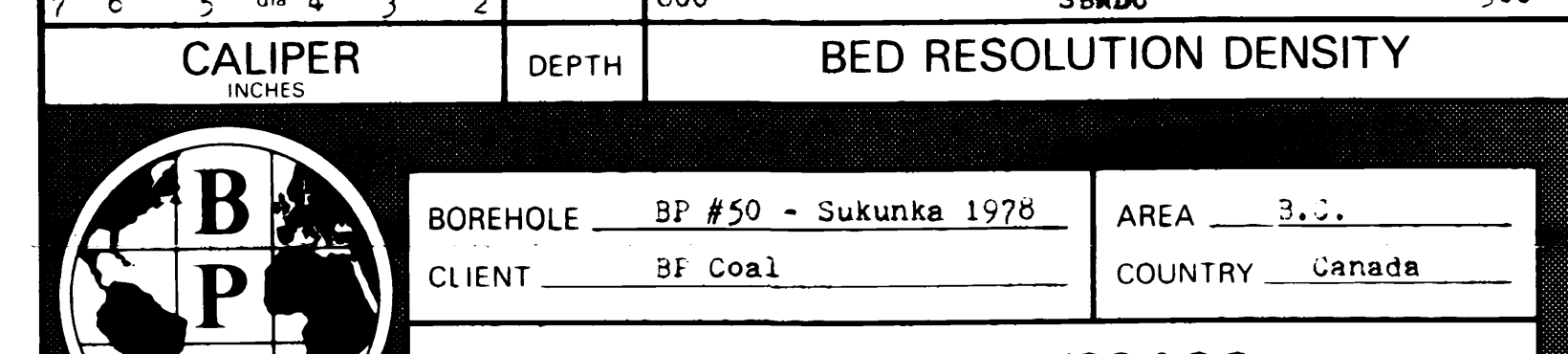
FROM	287	273	209
TO	281	267	204
INTERVAL	6	6	5
FROM			
TO			
INTERVAL			
TOTAL			17m

REMARKS
665

B P B SEAM THICKNESS LOG



Repeat Section



CALIPER INCHES DEPTH BED RESOLUTION DENSITY SBRDU

BOREHOLE BP #50 - Sukunka 1978 AREA B.C.
CLIENT BP Coal COUNTRY Canada

SEAM THICKNESS LOG



PE - SUCUNKA 21 (3)A.

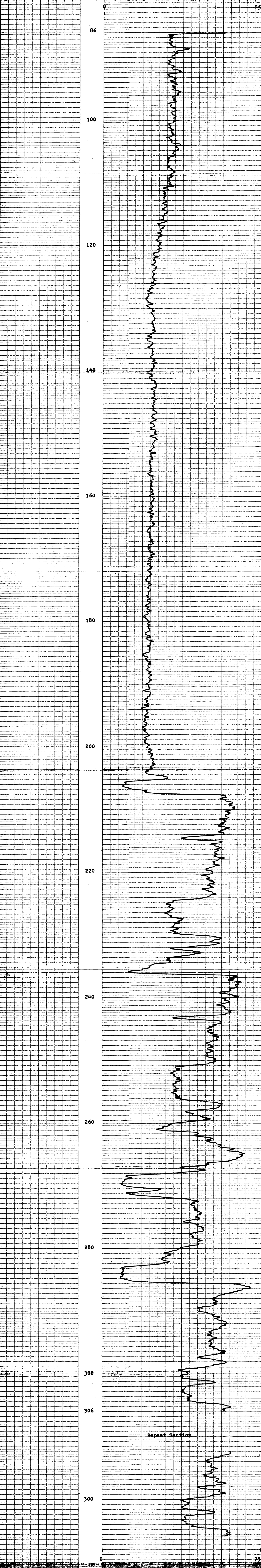


NEUTRON-NEUTRON LOG

COMPANY	BP Coal
BOREHOLE	BP #50 - Sukunka 1978
STATE	B.C.
COUNTRY	Canada
Permanent Datum	Ground Level
Log measured from	Ground Level
Drilling measured from	Ground Level
Absolute Elevation	N 1200
Run No.	1
Date	8 July 1978
Foot Reading	306m
Last Reading	306m
Interval Measured	220m
Casing BFB	
Casing Depth	4m
Bottom Reading	306.5m
Tool Nature	Water/Soap
S.G. Viscosity	5* to T.D.
Bit Size	5* to T.D.
Casing Size 1	5 1/2" to 4m
Casing Size 2	5 1/2" to 4m
Flow @ Meas Temp	to to
Flow @ Meas Temp	to to
Flow @ Meas Temp	to to
Flow @ Meas Temp	to to
Flow @ Meas Temp	to to
Flow @ Meas Temp	to to
BHT	5 1/2 hrs.
Logging Time	V2/V1
Tool No	R.8180P
Recorded By	L. Rindero
Witness	

Changes in Mud Type or Additional Samples		Scale Changes		
Date	Sample No.	Type Log	Scale Up Hole	Scale Down
Type Fluid in Hole				
Dens				
pH				
Source of Sample				
Rm @ Meas Temp				
Rmf @ Meas Temp				
Rmc @ Meas Temp				
Source Rmf	Rmc			
Rm @ BHT				
Rmf @ BHT				
Rmc @ BHT				

Logging Data						
Log	Depths	Speed	T.C.	Norm	Sonde No.	Source No.
	From	To				
N-N	306	86	9	1	.74	81 N2479



COMPANY	BP Coal
BOREHOLE	BP #50 - Sukunka 1978
STATE	B.C.
COUNTRY	Canada



12-514168-71(3)A

BOREHOLE BF #51 - Sukunka 1978
CLIENT BF Coal

AREA B.C.
COUNTRY Canada
DATE LOGGED 1.3.78

DEPTH SCALE 1:200
LOG 4, LOGS

COAL LITHOLOGY LOG

REMARKS
ELEMENT OF PRO B.P.B.
MAGNETIC RECORDING Q.L.
DEPTH REACHED 36.7m U.S. RECORDING
CASING SIZE 1 1/2" TO 2"
BIT SIZES 3 TO 4"
CASING SIZES 1 TO 2"
FLUID DATA

SONDE TYPE: WGET
COAL COMBINATION: B+
SONDE: 110
LOG SUITE: 359-0
LOG DENSITY: 1.5
CALIPER: H. 818170
WITNESS: C. J. CRFORD

OPERATION DATA
FIRST READING: 359-0
LAST READING: 359-0
INTERVAL LOGGED: 1.37-1.71
UNIT - TRACK NO: H. 818170
ENGINEER: C. J. CRFORD

EQUIPMENT AND RECORDING DATA													
COAL COMBINATION SONDE			TAPING			PANEL		CAL COEFF		DEPTHS		SEAM LOG RUN	
LOG	EQUIPMENT	SOURCE	CALIBRATOR	LOG TAPED	RECORD DIRECT	SPEED	SECS	NORM	FROM	TO	METRAL		
GAMMA RAY	110		3	Y	1-9	R	6-9	1	1.3	359	0	359	Y
DENSITY		MS52	42	Y	1-9	R	6-9	1/3	6.9	359	0	359	Y
CALIPER		SIDEWALL POSITION		Y	1-9	R	6-9	1/3	-	359	0	359	Y

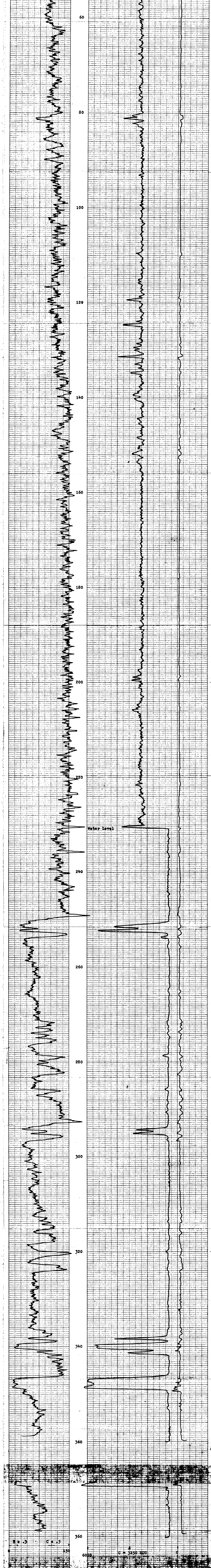
COAL QUALITY/SEAM THICKNESS LOG INTERVALS (Refer to relevant log)				INTERVAL TOTAL
FROM	351	298	255	
TO	336	293	249	
INTERVAL	15	5	6	26m

ADDITIONAL SONDES RUN			REMARKS
SONDE	LOG	GENERAL SCALE LOG/SCALE LOG	Water level at 231m - gamma recorder separately with source removed above this point.
Verticality		1:200	

B.P.B. COAL LITHOLOGY LOG CALIBRATION DATA

JIG No	VALUE	300 @ 2" DIAM	JIG CAL DATE	1/7/78	JIG VALUE	325 @ 1.5" dia	7 ins	255 cps
JIG MARK SHOWN AT ABOVE VALUE	3.3		JIG No	42	SPAN	6000	NORM	2 ins

GAMMA RAY	DEPTH	COAL BULK DENSITY	CALIPER
-----------	-------	-------------------	---------



GAMMA RAY	DEPTH	COAL BULK DENSITY	CALIPER
-----------	-------	-------------------	---------



BP - SUKUNKA 7131A

BOREHOLE BP #51 - Sukunka 1978
 CLIENT BP Coal

AREA B.C.
 COUNTRY Canada

DEPTH SCALE 1:20
 DATE LOGGED 13 July 1978

BOREHOLE DATA REFER TO LITHOLOGY LOG
 OPERATION DATA REFER TO LITHOLOGY LOG

EQUIPMENT AND RECORDING DATA
 COAL COMBINATION SONDE

LOG TAINING PANEL SIDEWALL POSITION
 LOG NO. 1000
 TUBE NO. 1
 SPEED 2.3
 GAMA Y 1 R 2.1
 LS DENSITY 1 1 2.1
 SOURCE SONDE AND CALIBRATION
 REFER TO LITHOLOGY LOG

SONDE TYPE: COAL
 COMBINATION SONDE

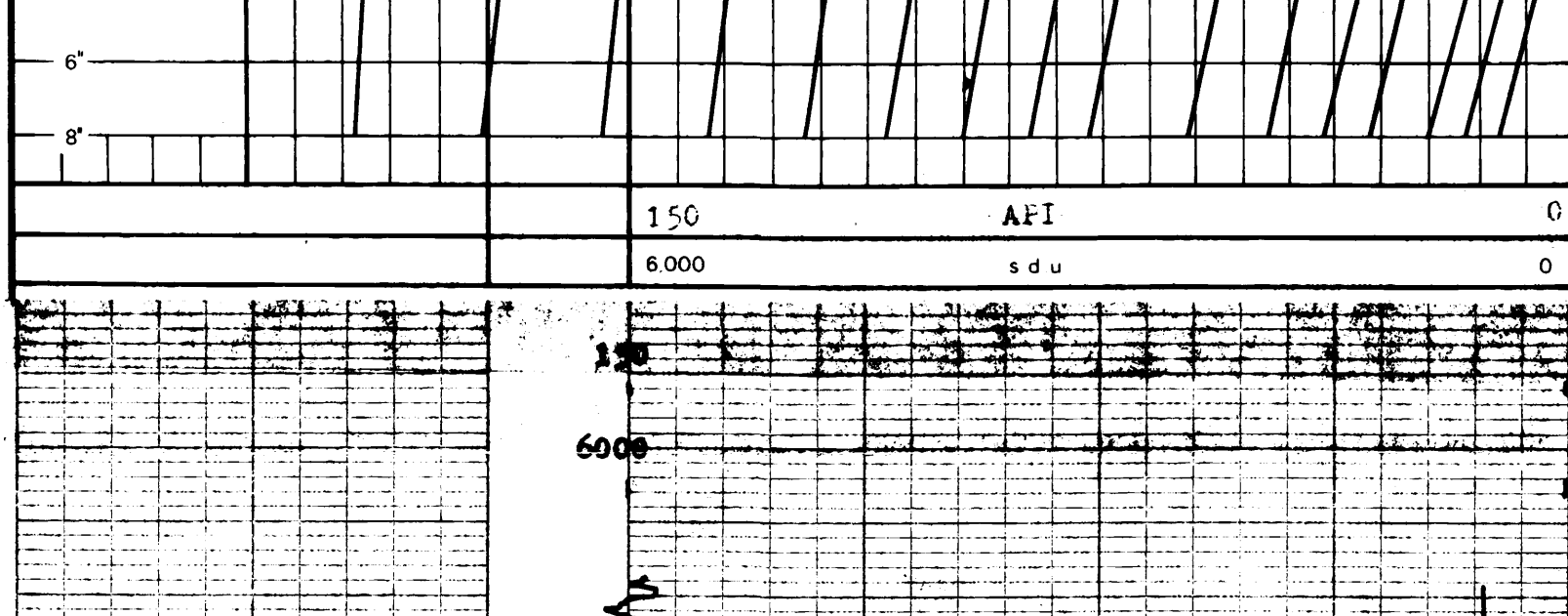
LOG SUITE: GAMMA RAY
 L.S. DENSITY

665

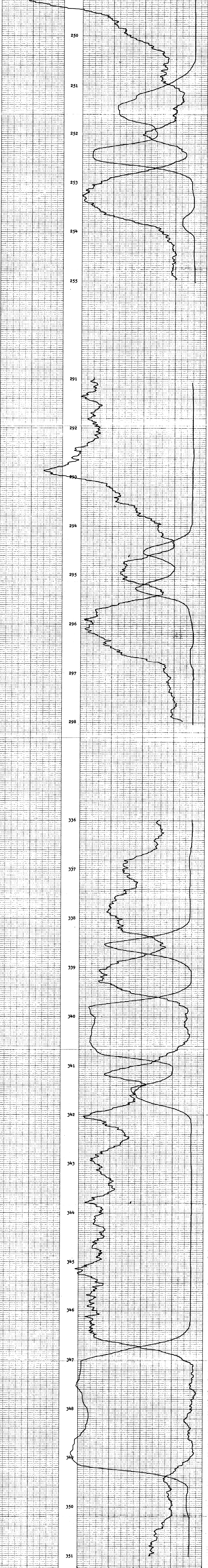
BPB COAL QUALITY LOG

DEPTH GAMMA RAY
 COAL BULK DENSITY g/cm³

HOLE SIZE CORRECTION DATA



150 AFI 0
 6000 s d u 0



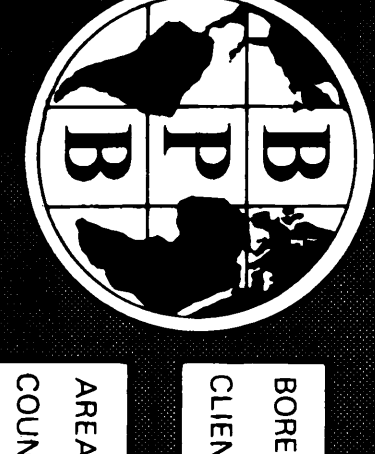
6000 s d u 0
 150 AFI 0

DEPTH COAL BULK DENSITY
 GAMMA RAY

BOREHOLE BP #51 - Sukunka 1978 AREA B.C.
 CLIENT BP Coal COUNTRY Canada

COAL QUALITY LOG





15 - SUKUNKA 77(3)A

BOREHOLE BP #51 - Sukunka 1978
CLIENT BP Coal

AREA B.C.
COUNTRY Canada
DATE LOGGED 13/7/78
3 of 4 LOGS

BOREHOLE DATA REFER TO LITHOLOGY LOG
OPERATION DATA REFER TO LITHOLOGY LOG
EQUIPMENT AND RECORDING DATA

SEAM THICKNESS LOG

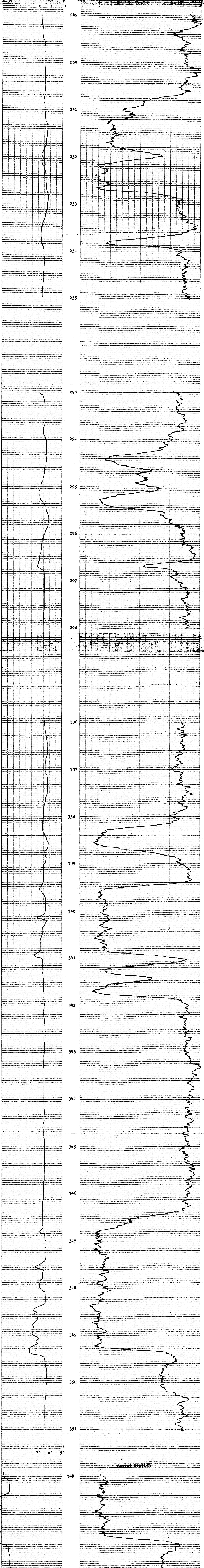
COAL COMBINATION SONDE
SONDE TYPE:
COAL

SEAM THICKNESS LOG INTERVALS
FROM 3.1 29.8 2.5
TO 3.6 27.3 2.9
INTERVAL 1.5 5 6

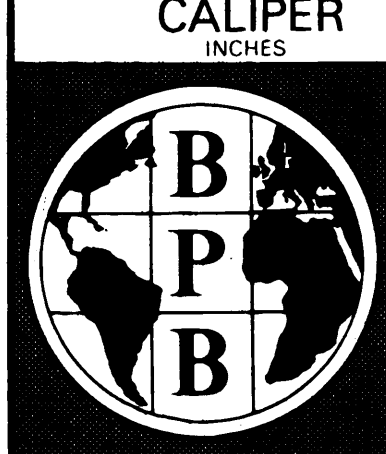
LOG SUITE
CALIBER
BR DENSITY

665

B P B SEAM THICKNESS LOG



CALIBER INCHES	DEPTH	BED RESOLUTION DENSITY
10 9 8 7 6 5	600	SBRDU 300



BOREHOLE BP #51 - Sukunka 1978
CLIENT BP Coal
AREA B.C.
COUNTRY Canada

SEAM THICKNESS LOG



NEUTRON-NEUTRON
LOG

COMPANY BF Coal
 BOREHOLE BF #51 - Sukunka 1278
 STATE B.C. COUNTRY Canada
 Permanent Datum Ground Level Elev. m
 Log measured from Ground Level m above PD
 Drilling measured from Ground Level m above PD

Run No. 1
 Date 13 July 1978
 Depth 361m
 Drilling Depth 361m

STC	W. S. S. 1	W. S. S. 2	W. S. S. 3	W. S. S. 4	W. S. S. 5	W. S. S. 6	W. S. S. 7	W. S. S. 8	W. S. S. 9	W. S. S. 10
361.3m										
UNIFORM										
Water										

REMARKS

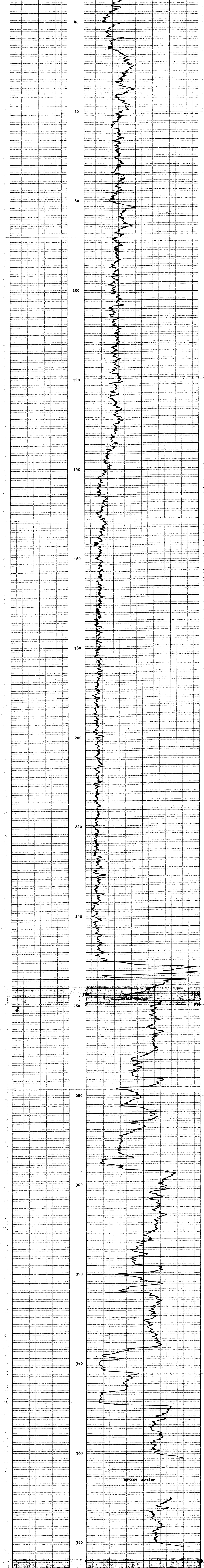
Changes in Mud Type or Additional Samples		Type Log	Depth	Scale Up Hole	Scale Down
Date	Sample No.				
Depth - Driller					
Type Fluid in Hole		N-N	259m	750-1750 SNU	0-750 SNU

Dens		Visc.		Fluid Loss	
gh					ml
Source of Sample					

Equipment Data		Tool Position		Other
Run No.	Tool Type			
Rmc @ Meas Temp				
Rmc @ Meas Temp				
Rmc @ Meas Temp				

Logging Data		T.C.		Norm.	Bovernd	Source No.
Log	Depths	Speed				
	From	To				
	N-N	361	0	9	1	0.74 81 N2479

Scale Change at water level



COMPANY BF Coal
 BOREHOLE BF #51 - Sukunka 1278
 STATE B.C.
 COUNTRY Canada

665



71-564-0004 71/18

BOREHOLE #52 - Sukunka 71/2
CLIENT B.P. Coal

AREA B.C.
COUNTRY Canada
DATE LOGGED 20/7/78

BOREHOLE DATA
FORMATION NAME B.P.B.
ELEVATION OF PG. 2100m
DIRECTION OF DRILLING 090°

COAL LITHOLOGY LOG
LOG NO. 665

COAL COMBINATION SONDE
SONDE TYPE 665
LOG SUITE
GAMMA RAY
CALIPER

EQUIPMENT AND RECORDING DATA													
COAL COMBINATION SONDE													
LOG	EQUIPMENT	SONDE	SOURCE	CALIBRATOR	LOG TAPED	TAPPING RECORD	DIRECT SPEED	REPLAY	PANEL T.C. SECS	CAL COEFF	DEPTHS FROM	TO	SEAM LOG RUN
GAMMA RAY	110				Y	9	U	4	1	1.3	436	0	436
DENSITY					Y	9	U	9	1/3	7.00	436	0	436
CALIPER					Y	9	R	9	1/3	-	436	0	436

COAL QUALITY/SEAM THICKNESS LOG INTERVALS (Refer to relevant log)				INTERVAL TOTAL
FROM	413	397	327	
TO	405	385	322	
INTERVAL	8	12	5	25m

ADDITIONAL SONDES RUN			REMARKS
SONDE	LOG	GENERAL SCALE LOG/SCALE LOG	Gamma ray recorded above water level with no source on sonde. Discontinuity at 90m - sonde jammed beneath bridge.
81	h-v	1:200	
Verticality			

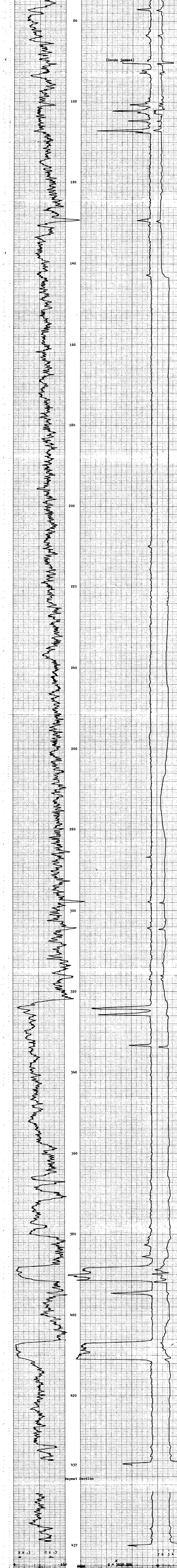
B P B COAL LITHOLOGY LOG

CALIBRATION DATA

JIG No 3	VALUE 3000 2" DIAM	JIG CAL DATE 1/7/78	JIG VALUE 3250	s.d.u. 1.58	m ³	7 ms	955 cps
JIG MARK SHOWN AT ABOVE VALUE - 3.3		JIG No 42	SPAN 6000	NORM	800 cps	2 ms	490 cps

GAMMA RAY	DEPTH	COAL BULK DENSITY	CALIPER
-----------	-------	-------------------	---------

HOLE SIZE CORRECTION DATA			
---------------------------	--	--	--



GAMMA RAY	DEPTH	COAL BULK DENSITY	CALIPER
-----------	-------	-------------------	---------



22 - SUKUNKA 71(3)A

BOREHOLE BP #52 - Sukunka 1978
CLIENT BP Coal

AREA B.C.
COUNTRY Canada
DATE LOGGED 20/21 July 77

DEPTH SCALE 1:20
2 OF 4 LOGS

COAL QUALITY LOG
BOREHOLE DATA REFER TO LITHOLOGY LOG
OPERATION DATA REFER TO LITHOLOGY LOG
EQUIPMENT AND RECORDING DATA

COAL COMBINATION SONDE
LOG TAPPING SIDEWALL POSITION
LOG TAPPING POSITION PANEL CENTER
LOG TAPPING SPEED (ft/min) NORM
LOG TAPPING DEPTH (ft) NORM
LOG TAPPING RATE (ft/min) NORM
LOG TAPPING TIME (min) NORM
LOG TAPPING TEMPERATURE (°C) NORM
LOG TAPPING PRESSURE (psi) NORM
LOG TAPPING VIBRATION (ft/min) NORM
LOG TAPPING TORQUE (ft-lb) NORM
LOG TAPPING CURRENT (amps) NORM
LOG TAPPING VOLTAGE (volts) NORM
LOG TAPPING SPEED (ft/min) NORM
LOG TAPPING DEPTH (ft) NORM
LOG TAPPING RATE (ft/min) NORM
LOG TAPPING TIME (min) NORM
LOG TAPPING TEMPERATURE (°C) NORM
LOG TAPPING PRESSURE (psi) NORM
LOG TAPPING VIBRATION (ft/min) NORM
LOG TAPPING TORQUE (ft-lb) NORM
LOG TAPPING CURRENT (amps) NORM
LOG TAPPING VOLTAGE (volts) NORM

SONDE TYPE
COAL COMBINATION SONDE
LOG SUITE
GAMMA RAY
L.S. DENSITY

665

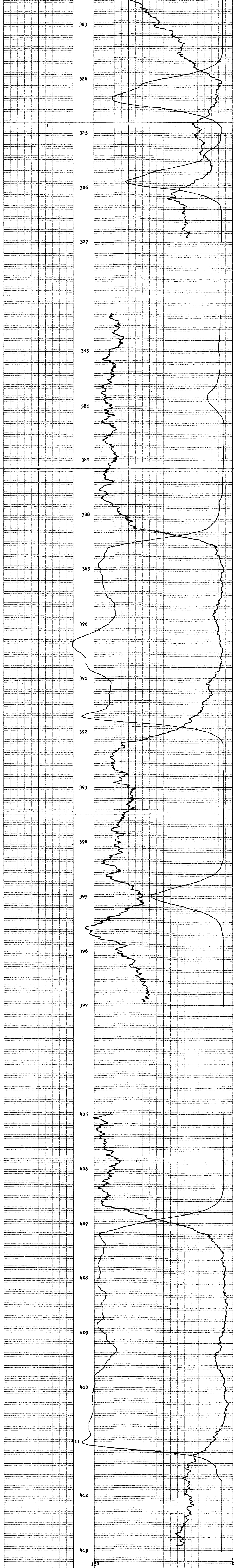
B PB COAL QUALITY LOG

GAMMA RAY
COAL BULK DENSITY
g/cm³

HOLE SIZE CORRECTION DATA

2'	1.2	1.25	1.3	1.35	1.4	1.45	1.5	1.55	1.6	1.7	1.8	1.9	2.0	2.2	2.4	3.0
----	-----	------	-----	------	-----	------	-----	------	-----	-----	-----	-----	-----	-----	-----	-----

150 API 0
6000 s d u 0



6000 s d u 0
150 API 0

DEPTH
GAMMA RAY
COAL BULK DENSITY
g/cm³

BOREHOLE BP #52 - Sukunka 1978
CLIENT BP Coal
AREA B.C.
COUNTRY Canada

COAL QUALITY LOG





BF - Sukunka 1978

BOREHOLE BF #52 - Sukunka 1978

CLIENT BF Coal

AREA B.C.

COUNTRY Canada

DATE LOGGED 8/21 Jul 78

3.05-4.00SS

DEPTH SCALE 1:20

SEAM THICKNESS LOG

BOREHOLE DATA REFER TO LITHOLOGY LOG

OPERATION DATA REFER TO LITHOLOGY LOG

EQUIPMENT AND RECORDING DATA

COAL COMBINATION SONDE

LOG

SEAM THICKNESS LOG INTERVALS

SEAM THICKNESS LOG INTERVALS

COMBINATION SONDE

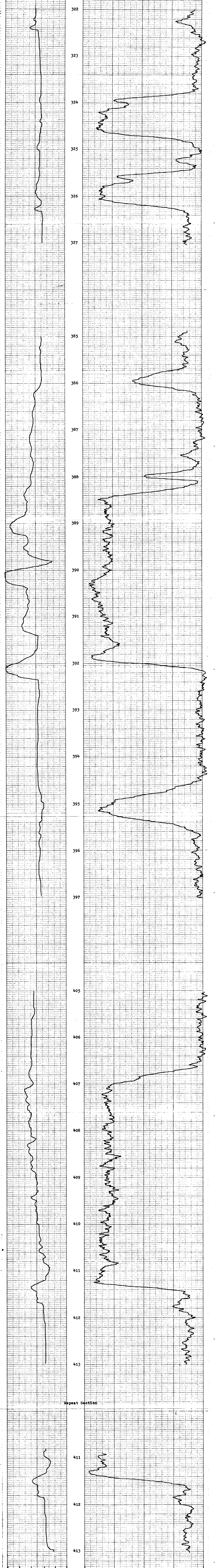
LOG SUITE:

CALIPER

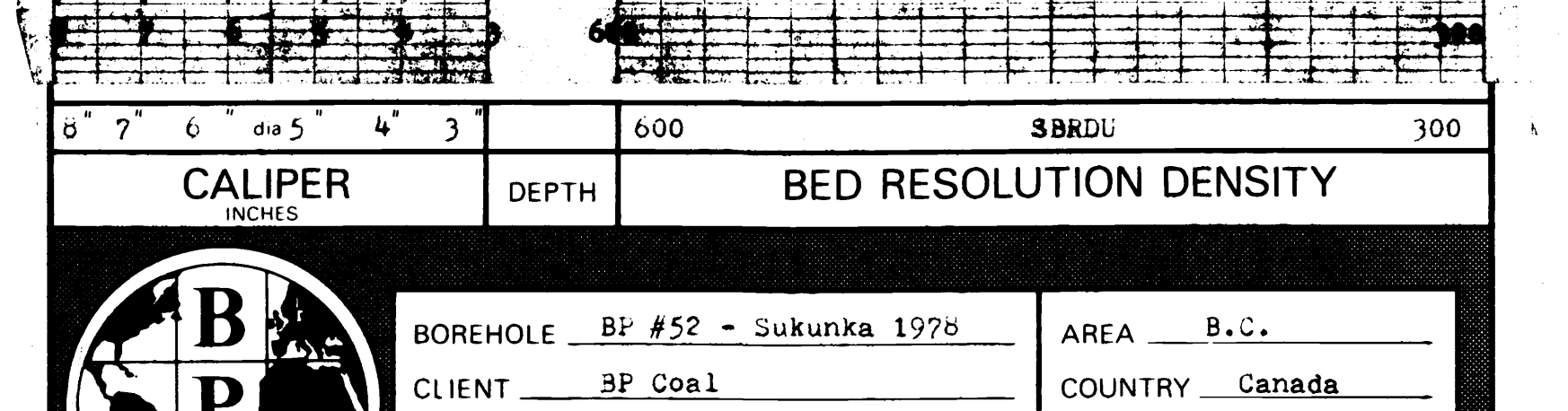
B.R. DENSITY

665

B P B SEAM THICKNESS LOG



Repeat Section



CALIPER INCHES: 6 7 6 dia 5 4 3

DEPTH: 600 300

BED RESOLUTION DENSITY: SBRDU



BOREHOLE BF #52 - Sukunka 1978

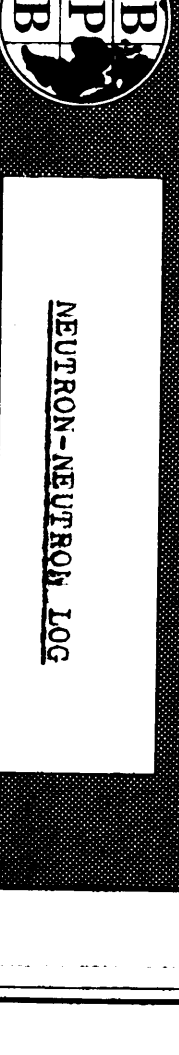
CLIENT BF Coal

AREA B.C.

COUNTRY Canada

SEAM THICKNESS LOG

2125/19A 71/3/1A

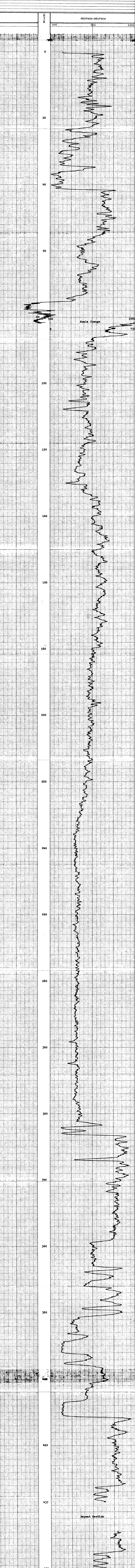


NEUTRON-NEUTRON LOG

COMPANY BP Coal
 BOREHOLE BP #52 - Sukunka 1978
 STATE B.C. COUNTRY Canada
 Log measured from Ground Level Elev. m
 Log measured from Ground Level m above F.O.
 Drilling measured from Ground Level

DATE 20/21 JULY 78
 TIME 11:20
 LOG NUMBER 4378
 LOG REVISION 0
 LOGGING SPEED 4.378
 LOGGING TIME 4.378
 LOGGING DISTANCE 4.378
 LOGGING DEPTH 4.378
 LOGGING TEMPERATURE 4.378
 LOGGING PRESSURE 4.378
 LOGGING HUMIDITY 4.378
 LOGGING WIND 4.378
 LOGGING RAIN 4.378
 LOGGING CLOUDS 4.378
 LOGGING VISIBILITY 4.378
 LOGGING AIR TEMPERATURE 4.378
 LOGGING SURFACE TEMPERATURE 4.378
 LOGGING SOIL TEMPERATURE 4.378
 LOGGING WATER TEMPERATURE 4.378
 LOGGING WIND DIRECTION 4.378
 LOGGING WIND VELOCITY 4.378
 LOGGING WIND VELOCITY DIRECTION 4.378
 LOGGING WIND VELOCITY VELOCITY DIRECTION 4.378
 LOGGING WIND VELOCITY VELOCITY DIRECTION VELOCITY DIRECTION 4.378

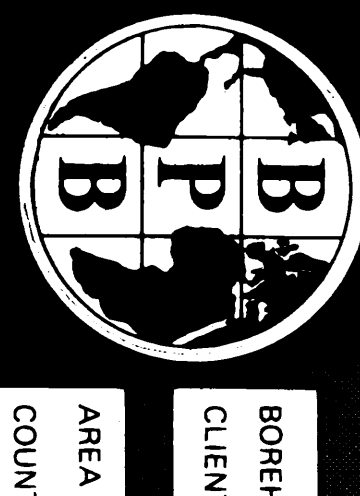
DEPTH 0 to 437
 MUD TYPE Water
 MUD NAME Water
 MUD WEIGHT Water
 MUD VOLUME Water
 MUD GRAVITY Water
 MUD TEMPERATURE Water
 MUD PRESSURE Water
 MUD HUMIDITY Water
 MUD WIND Water
 MUD RAIN Water
 MUD CLOUDS Water
 MUD VISIBILITY Water
 MUD AIR TEMPERATURE Water
 MUD SURFACE TEMPERATURE Water
 MUD SOIL TEMPERATURE Water
 MUD WATER TEMPERATURE Water
 MUD WIND DIRECTION Water
 MUD WIND VELOCITY Water
 MUD WIND VELOCITY DIRECTION Water
 MUD WIND VELOCITY VELOCITY DIRECTION Water
 MUD WIND VELOCITY VELOCITY DIRECTION VELOCITY DIRECTION Water



DEPTH 0 to 437
 MUD TYPE Water
 MUD NAME Water
 MUD WEIGHT Water
 MUD VOLUME Water
 MUD GRAVITY Water
 MUD TEMPERATURE Water
 MUD PRESSURE Water
 MUD HUMIDITY Water
 MUD WIND Water
 MUD RAIN Water
 MUD CLOUDS Water
 MUD VISIBILITY Water
 MUD AIR TEMPERATURE Water
 MUD SURFACE TEMPERATURE Water
 MUD SOIL TEMPERATURE Water
 MUD WATER TEMPERATURE Water
 MUD WIND DIRECTION Water
 MUD WIND VELOCITY Water
 MUD WIND VELOCITY DIRECTION Water
 MUD WIND VELOCITY VELOCITY DIRECTION Water
 MUD WIND VELOCITY VELOCITY DIRECTION VELOCITY DIRECTION Water

COMPANY BP Coal
 BOREHOLE BP #52 - Sukunka 1978
 STATE B.C.
 COUNTRY Canada

665



72-514444-7181A

BOREHOLE BP #53 - Sukunka 1978
 CLIENT BP Coal
 AREA S.C.
 COUNTRY Canada
 DATE LOGGED 21/2/23

BOREHOLE DATA
 REMAINING DEPTH Ground Level
 ELEVATION OF TD 899
 MASS/STRENGTH 0.14
 DEPTH REACHED 389m
 CHANGING SMOKE 10m
 BIT SIZES 3" TO T.D.
 CHANGING SIZES 1 3/4" TO 1.0m, 2 3/4" TO 1.0m, 3 3/4" TO 1.0m
 FLUID DATA see REMARKS
 NATURE QUILT-Oil

SONDE TYPE 1.0m
 COAL COMBINATION
 SONDE
 LOG SUITE
 GAMMA RAY
 L.S. DENSITY
 CALIPER
 WITNESS
 OPERATOR
 ENGINEER
 WITNESS

OPERATION DATA
 DEPTH 389m
 LAST FEASIBLE 386m
 INTERVAL LOGGED 123/21
 UNIT - TRUCK No
 ENGINEER H. J. JORDAN
 WITNESS A. JOHNSON

EQUIPMENT AND RECORDING DATA															
COAL COMBINATION SONDE				TAPING				PANEL		CAL. CORR.		DEPTHS		SEAM LOG RUN	
LOG	EQUIPMENT	CALIBRATOR	LOG TAPE	RECORD SPEED	DIRECT REPLAY	T.C. SECS	T.C. SECS	NORM	FROM	TO	INTERVAL	SEAM LOG RUN	SEAM LOG RUN	SEAM LOG RUN	
GAMMA RAY	110	3	Y	9	D	9	1	1.3	386	0	386	Y	Y	Y	
DENSITY	5852		Y	9	D	9	1/3	6.4	386	0	386	Y	Y	Y	
CALIPER	SIDEWALL POSITION		Y	9	R	9	1/3	-	340	0	340	Y	Y	Y	

COAL QUALITY SEAM THICKNESS LOG INTERVALS (Refer to relevant log)							
FROM	325	289	279	237	89	81	
TO	320	284	272	227	85	76	
INTERVAL	5	5	7	10	4	5	INTERVAL TOTAL 36m

ADDITIONAL SONDES RUN				REMARKS	
SONDE	LOG	GENERAL SCALE LOG	DETAIL SCALE LOG	REFER TO ADDITIONAL HEADINGS	
81	N-N	11200	11450		Hole not deep enough on first run, and logs had to be run through drill-rods after deepening. Hence general logs BELOW 340m are inside rods, and ABOVE 340m are in open hole.

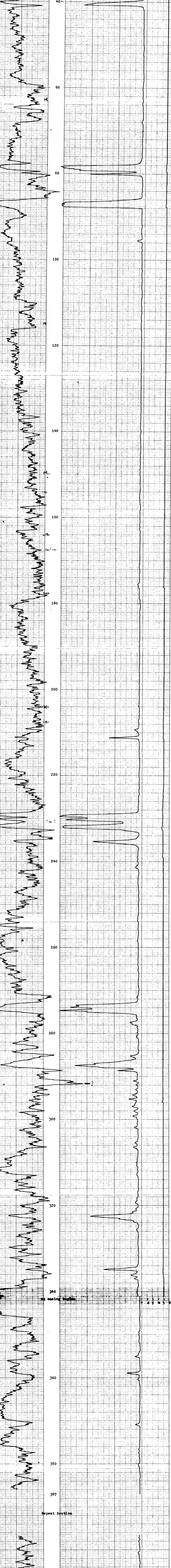
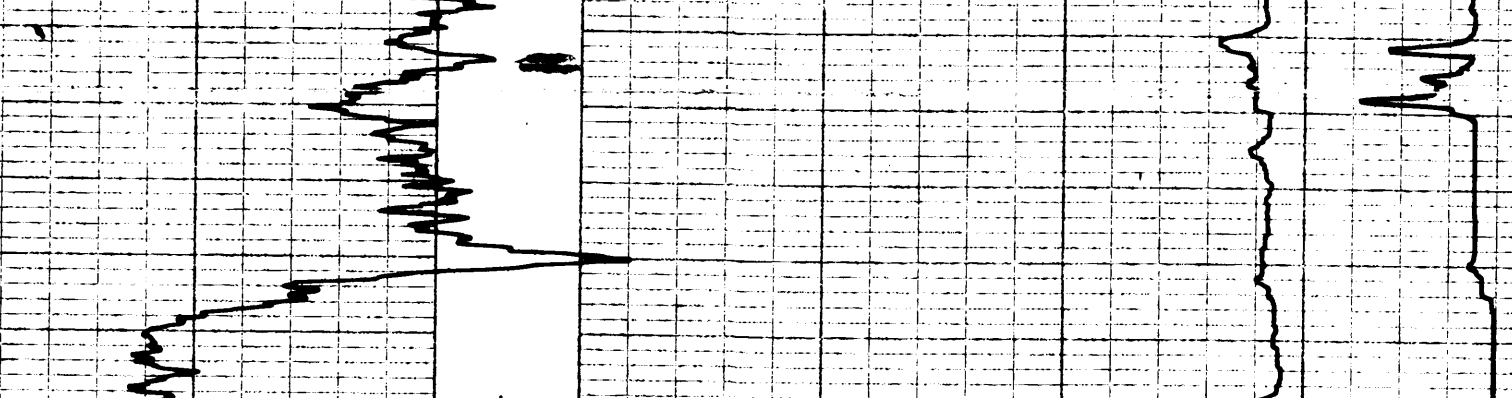
B P B COAL LITHOLOGY LOG

CALIBRATION DATA

JIG No 3	VALUE 3000 2" DIAM	JIG CAL DATA 7/78	JIG VALUE 325 @ DU @ 1.58 gm ³	7 ins 955 cps
JIG MARK SHOWN AT ABOVE VALUE 3.33		JIG No 42	SPAN 6000	NORM $\frac{SDU}{CPS} = 6.90$

GAMMA RAY	DEPTH	COAL BULK DENSITY	CALIPER
-----------	-------	-------------------	---------

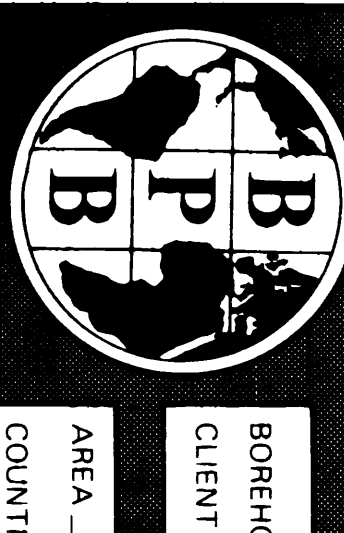
HOLE SIZE CORRECTION DATA



GAMMA RAY	DEPTH	COAL BULK DENSITY	CALIPER
-----------	-------	-------------------	---------

BOREHOLE BP #53 - Sukunka 1978 AREA S.C.
 CLIENT BP Coal COUNTRY Canada

COAL LITHOLOGY LOG



BP #53 - Sukwika 1979

CLIENT BP Coal

AREA S.W.
COUNTRY Canada
DATE LOGGED 21 JUL 79

OPERATION DATA
REFER TO LITHOLOGY LOG

EQUIPMENT AND RECORDING DATA
REFER TO LITHOLOGY LOG

COAL COMBINATION SOURCE
LOG

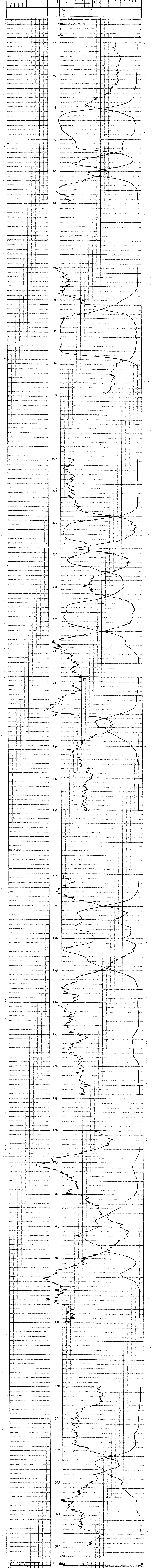
COAL QUALITY LOG INTERNALS

COAL COMBINATION
COMBINATION
SOURCE

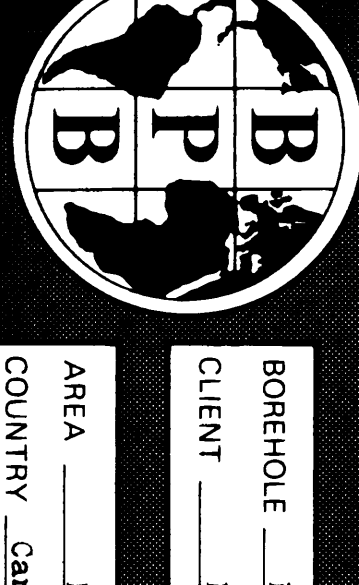
LOG SUITE
GAMMA RAY
GAMMA RAY
S DENSITY

665

B.P.B. COAL QUALITY LOG



DEPTH	6.000	1.50	2.00
		AFI	
			COAL BULK DENSITY
			g/cm ³
			GAMMA RAY



BOREHOLE BF #53 - Sukunka 1978
 CLIENT BF Coal **665**

AREA B.C.
 COUNTRY Canada
 DATE LOGGED 31 July 198

SEAM THICKNESS LOG

BOREHOLE DATA REFER TO LITHOLOGY LOG
 OPERATION DATA REFER TO LITHOLOGY LOG
 EQUIPMENT AND RECORDING DATA

SONDE TYPE
 COAL

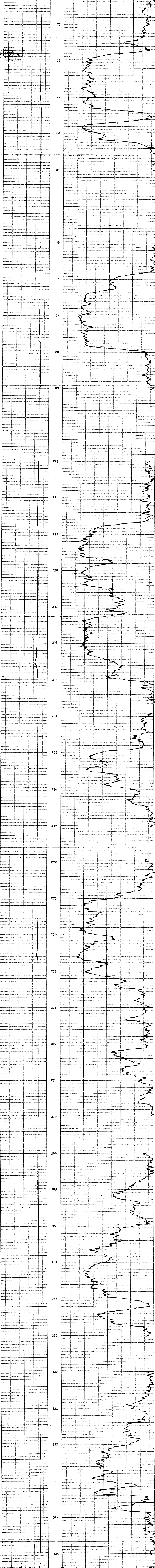
COMBINATION
 SONDE
 LOG SUITE
 CALIPER
 BR DENSITY

LOG MODEL SIDERAIL POSITION
 CALIPER X 1-2 R 2 1 1-7d
 SOURCE SONDE AND CALIBRATION
 REFER TO LITHOLOGY LOG

SEAM THICKNESS LOG INTERVALS
 FROM 325 TO 289 272
 FROM 272 TO 230 272
 FROM 230 TO 227 81
 FROM 227 TO 228 85
 FROM 228 TO 229 75
 FROM 229 TO 231 5
 FROM 231 TO 232 4
 FROM 232 TO 233 5
 FROM 233 TO 234 4
 FROM 234 TO 235 5
 FROM 235 TO 236 4
 FROM 236 TO 237 5
 FROM 237 TO 272 35
 FROM 272 TO 273 4
 FROM 273 TO 274 5
 FROM 274 TO 275 4
 FROM 275 TO 276 5
 FROM 276 TO 277 4
 FROM 277 TO 278 5
 FROM 278 TO 279 4
 FROM 279 TO 284 5
 FROM 284 TO 285 4
 FROM 285 TO 286 5
 FROM 286 TO 287 4
 FROM 287 TO 288 5
 FROM 288 TO 289 4
 FROM 289 TO 320 31
 FROM 320 TO 321 4
 FROM 321 TO 322 5
 FROM 322 TO 323 4
 FROM 323 TO 324 5
 FROM 324 TO 325 4

REMARKS See remarks on Coal
 Quality Log. Depth figures for
 top detail should be 10 cm larger.
 100 depth figures are correct.

B P B SEAM THICKNESS LOG



CALIPER INCHES	DEPTH	BED RESOLUTION DENSITY
7	580	260
6		
5		
4		
3		
2		

BOREHOLE BF #53 - Sukunka 1978
 CLIENT BF Coal

AREA B.C.
 COUNTRY Canada



SEAM THICKNESS LOG

MY 880028



NEUTRON-NEUTRON LOG

12-5-1978 28/5/78

COMPANY BP Coal

BOREHOLE BP #53 - Sukunka 1978

STATE B.C. COUNTRY Canada

Permittent Datum Ground Level Elev. m.

Log measured from Flg. Floor .6m above P.D.

Drilling measured from Flg. Floor

Unit of Measure N

Run No. 1 & 2 1200

Tool Reading 317 & 3/8 178

General Measured 0

Counting Rate 387m

Counting Rate 16m

Depth of Penetration 387m

Tool Bit 401-K-06-1

Tool Bit 1.0m to 1.1m

Tool Bit 1.0m to 1.0m

Tool Bit 1.0m to 1.0m

Tool Bit 1.0m to 1.0m

Tool Bit 1.0m to 1.0m

Tool Bit 1.0m to 1.0m

Tool Bit 1.0m to 1.0m

Tool Bit 1.0m to 1.0m

Tool Bit 1.0m to 1.0m

Tool Bit 1.0m to 1.0m

Tool Bit 1.0m to 1.0m

Tool Bit 1.0m to 1.0m

Tool Bit 1.0m to 1.0m

Tool Bit 1.0m to 1.0m

Tool Bit 1.0m to 1.0m

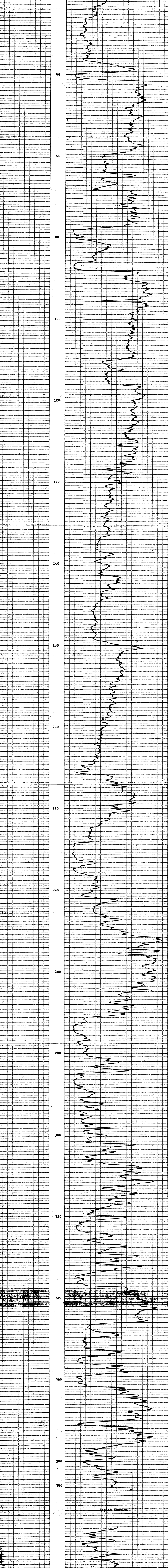
665

fold here

REMARKS		Scale Changes	
Date	Sample No.	Type Log	Scale Up Hole
			Scale Down
Changes in Mud Type or Additional Samples			
Depth - Driller			
Type Fluid in Hole			
Dens	Visc		
Sp	Fluid Loss		
Source of Sample		Run No.	Tool Type
Rm @ Meas Temp			Tool Position
Rmf @ Meas Temp			Other
Rmc @ Meas Temp			
Source Rmf	Rmc		
Rm @ BHT			
Rmf @ BHT			
Rmc @ BHT			

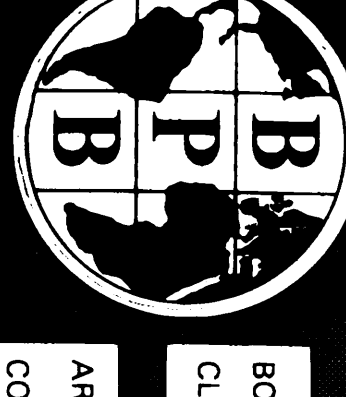
Logging Data	
Log	From To
N-N	387 0 9 1 0.75 81 12479

N-N log run through Nq drill rods.



DEPTH	NEUTRON-NEUTRON
0	1000 SNU
387	0 SNU

COMPANY BP Coal
 BOREHOLE BP #53 - Sukunka 1978
 STATE B.C.
 COUNTRY Canada



11 - SUKUNKA 78 (3) A

BOREHOLE BP #54 - Sukunka 1978
CLIENT BP Coal

AREA 3. U.
COUNTRY Canada
DATE LOGGED 25 July 1978

REPORT STATE DE 1200
1 OF 4 LOGS

BOREHOLE DATA
PERMANENT DATUM Ground Level
ELEVATION OF P.D. 8 P.B.
DULLER
MAXIMUM DEPTH FROM G.T.L. 294.6m
DEPTH REACHED G.T.L. 296.0m

COAL LITHOLOGY LOG
LOG NO. 1
BIT SIZES 1 6 8 TO T.D. 2 TO 4 TO
CASING SIZES 1 TO 2 TO

FLUID DATA
NATURE Water
SG
LEVEL
VISCOSITY
B.H.T.

SONDE TYPE C-139m
COAL COMBINATION
SONDE
LOG SUITE
GAMMA RAY
L.S. DENSITY
CALIPER
ENGINEER R. ALSTON
WITNESS C. ALKOFF

665

OPERATION DATA
FIRST READING 25.3m
LAST READING 29.3m
INTERVAL LOGGED V2 1/21
UNIT-TAPIC No. R. ALSTON
CALIPER C. ALKOFF

EQUIPMENT AND RECORDING DATA											
COAL COMBINATION SONDE											
LOG	EQUIPMENT	SOURCE	CALIBRATOR	LOG TAPED	TAPING RECORD SPEED	DIRECT REPLAY	PANEL SPEED	TC SECS	CAL COEFF	DEPTHS FROM	SEAM LOG RUN
GAMMA RAY	110		3	Y	9	D	9	1	1.3	293	Y
DENSITY			42	Y	9	D	9	1/3	7.0	293	Y
CALIPER	SIDEWALL POSITION			Y	9	R	9	1/3	-	293	Y

COAL QUALITY/SEAM THICKNESS LOG INTERVALS (Refer to relevant log)					
FROM	TO	INTERVAL	SEAM	THICKNESS	LOG
292	283	156	148	107	
286	277	206	152	141	96
6	6	6	7	9	

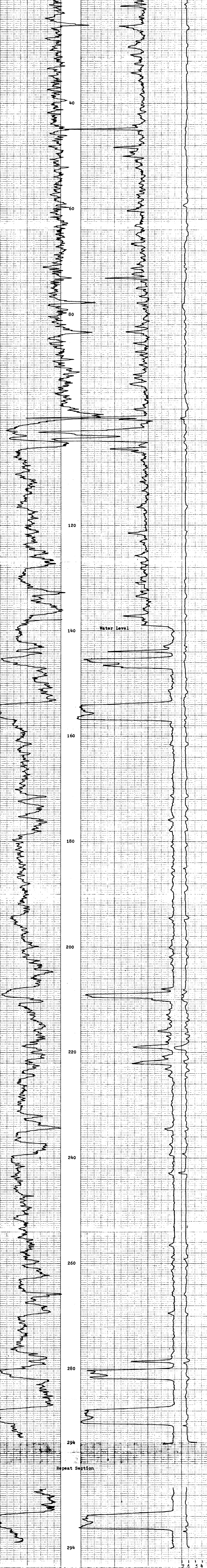
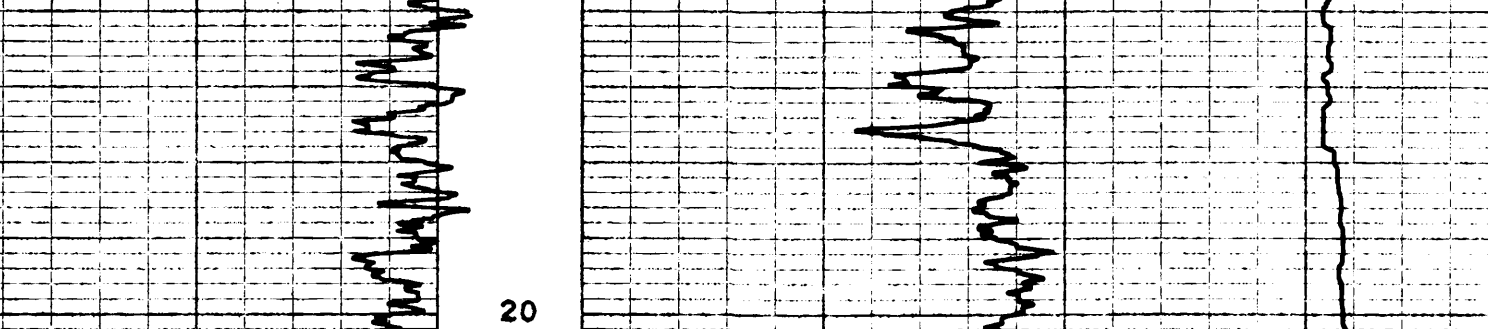
ADDITIONAL SONDES RUN				REMARKS			
SONDE	LOG	GENERAL SCALE LOG	DETAIL SCALE LOG	REFER TO ADDITIONAL HEADINGS			
81	N-N	11200			Gamma ray run from 138m - 0 with source removed from sonde.		
Verticality							

B P B COAL LITHOLOGY LOG

CALIBRATION DATA			
JIG No 3	VALUE 300 2' DIAM	JIG CAL DATE 1/7/78	JIG VALUE 3250 SDU @ 1.54 g/cm ³
JIG MARK SHOWN AT ABOVE VALUE -3.3		JIG No 42	SPAN 6000 NORM SOU CPS 7.00

GAMMA RAY	DEPTH	COAL BULK DENSITY	CALIPER
-----------	-------	-------------------	---------

HOLE SIZE CORRECTION DATA

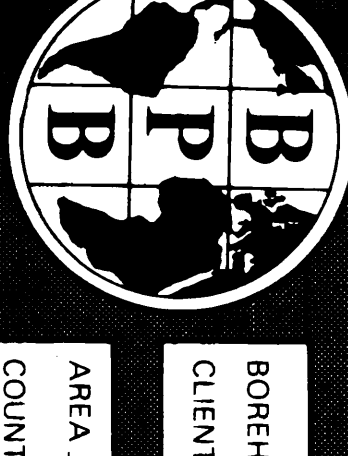


GAMMA RAY	DEPTH	COAL BULK DENSITY	CALIPER
-----------	-------	-------------------	---------

BOREHOLE BP #54 - Sukunka 1978 AREA B.C.
CLIENT BP Coal COUNTRY Canada

COAL LITHOLOGY LOG





22- Sukunka 78 (517)

BOREHOLE BF #54 - Sukunka 1978
CLIENT BF Coal

AREA B.C.
COUNTRY Canada
DATE LOGGED 25 JULY 1978

DEPTH SCALE
1:20
2 or 1 LOSS

BOREHOLE DATA refer to lithology log
OPERATION DATA refer to lithology log
EQUIPMENT AND RECORDING DATA

COAL COMBINATION ZONE
LOG

LOG
LITHOLOGY
FACIES
TEXTURE
STRUCTURE
CORRELATION
CORRECTION
SCALE
DEPTH
CORRECTION
SCALE
DEPTH

SONDE TYPE:
COAL COMBINATION
SONDE

LOG SUITE
GAMMA RAY
L S DENSITY

REMARKS: T-20 detail above water level - therefore density values are lower than usual.

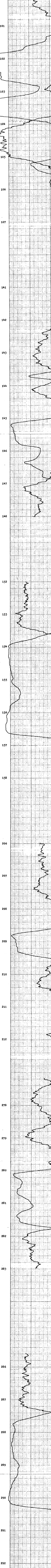
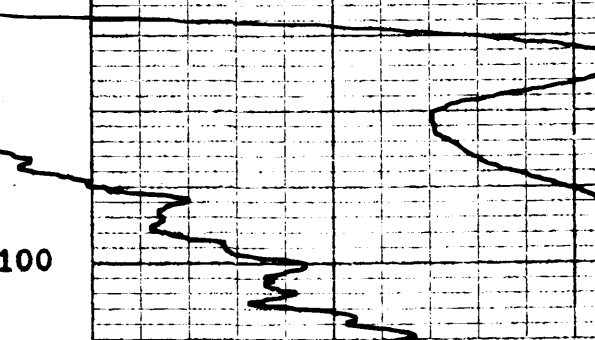
665

BPPB COAL QUALITY LOG

GAMMA RAY COAL BULK DENSITY

DEPTH

HOLE SIZE CORRECTION DATA

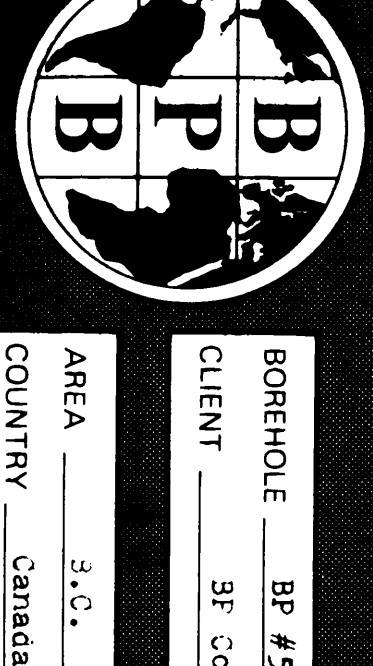


COAL BULK DENSITY
GAMMA RAY



BOREHOLE BF #54 - Sukunka 1978
CLIENT BF Coal
AREA B.C.
COUNTRY Canada
COAL QUALITY LOG

2. SEAM # 78 (31)



BOREHOLE BF #54 - Sukunka 1978
 CLIENT BP Coal
 AREA 3.0
 COUNTRY Canada
 DEPTH SCALE 1125
 DATE LOGGED 25 July '78
 FOR D LOGS

SEAM THICKNESS LOG

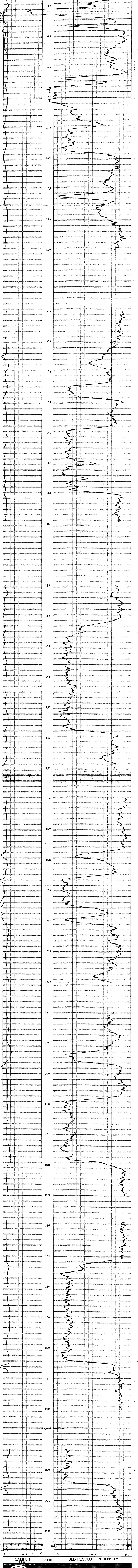
BOREHOLE DATA REFER TO LITHOLOGY LOG
 OPERATION DATA REFER TO LITHOLOGY LOG
 EQUIPMENT AND RECORDING DATA
 COAL COMBINATION SOURCE SIGNAL POSITION
 LOG LAMING SIGNAL POSITION
 CALIPER Y 1 R 2 I 783
 BURUSH Y 1 R 2 I 783

SONDE TYPE: COAL
 COMBINATION SONDE
 LOG SUITE:
 CALIPER
 BR DENSITY

FROM	292	233	212
INFEED	292	233	212
FROM	1.52	1.46	1.07
TO	1.52	1.41	0.98
INFEED	6	7	9

665

B P B SEAM THICKNESS LOG



CALIPER INCHES	DEPTH	BED RESOLUTION DENSITY
7 6 5 4 3 2	600	SBRDU 300

BOREHOLE BF #54 - Sukunka 1978 AREA 3.0
 CLIENT BP Coal COUNTRY Canada

SEAM THICKNESS LOG

BE-516 LNK-B 71/314



NEUTRON-NEUTRON LOG

COMPANY BP Coal
 BOREHOLE BF #54 - Sukunka 1973
 STATE B.C. COUNTRY Canada

Permanent Datum Ground Level Elev. m.
 Log measured from Ground Level m. above P.D.
 Drilling measured from Ground Level m. above P.D.

Run No. 1 11200
 Date 25 July 1978
 Time 2346m
 Depth 0
 Core No. 234m

Driller Walter
 Bit Size 224.6m
 Mud Name Water

SG Viscosity
 Bit Speed ft* to T.L.
 Casing Size to
 Core to
 Form to
 BHT to
 Operating Time 6 hrs.
 Log No. V23/21
 Recorder R. Bishop
 Witness C. Bichford

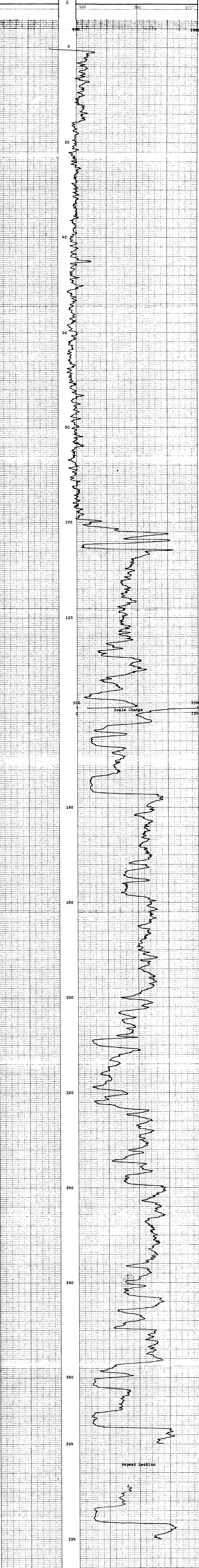
665

REMARKS

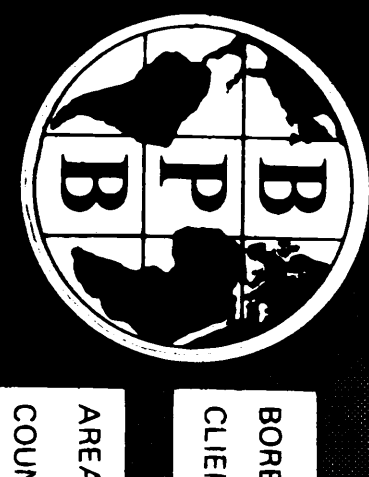
Changes in Mud Type or Additional Samples		Scale Changes			
Date	Sample No.	Type Log	Depth	Scale Up Hole	Scale Down
		N-N	139m	900-1900 SNU	0-750 SNU

Equipment Data		Logging Data			
Run No.	Tool Type	Tool Position	Other	Log	Source No.

Logging Data		Speed	T C	Norm	Source No.
From	To				
N-N	294	0	9	1	0.74 51 N2479



COMPANY BP Coal
 BOREHOLE BF #54 - Sukunka 1973
 STATE B.C.
 COUNTRY Canada



BP #55 - Sukunka 1978

BOREHOLE BP #55 - Sukunka 1978
 CLIENT BP Coal
 AREA B.C.
 COUNTRY Canada
 DATE LOGGED 27 July '78

DEPTH SCALE
 1:200
 1.0" = 1.00S

BOREHOLE DATA
 REMARKS COLUMN Ground Level
 ELEVATION OF TD 818
 MASQUANETS FROM G.L. 272.3m
 DEPTH REACHED G.L. 279.3m
 CASING SHOE TO -
 BIT SIZES 1 6 3/4" TO 2 1/2"
 CASING SIZES 1 TO 2 TO

SONDE TYPE WATER
 COAL COMBINATION
 SONDE
 LOG SUITE
 GAMMA RAY
 LS DENSITY
 CALIPER
 ENGINEER R. ELSTON
 WITNESS D. McTavish

OPERATION DATA
 FIRST READING 0
 LAST READING 277m
 INTERVAL LOGGED 277m
 UNIT - TRUCK NO V2121
 665

EQUIPMENT AND RECORDING DATA											
COAL COMBINATION SONDE											
LOG	EQUIPMENT	TAPING	PANEL	CAL	DEPTHS		SEAM LOG RUN				
SONDE	SOURCE	RECORD SPEED	DIRECT REPLAY	T.C. SECS	NORM	FROM	TO	INTERVAL			
GAMMA RAY	110	Y	9	D	9	1	1.3	277	0	277	Y
LS DENSITY	5852	Y	9	D	9	1/3	6.85	277	0	277	Y
CALIPER	SIDEWALL	Y	9	R	9	1/3	-	277	0	277	Y

COAL QUALITY/SEAM THICKNESS LOG INTERVALS (Refer to relevant log)			
FROM	152	143	76
TO	146	137	69
INTERVAL	6	6	7
			INTERVAL TOTAL 19m

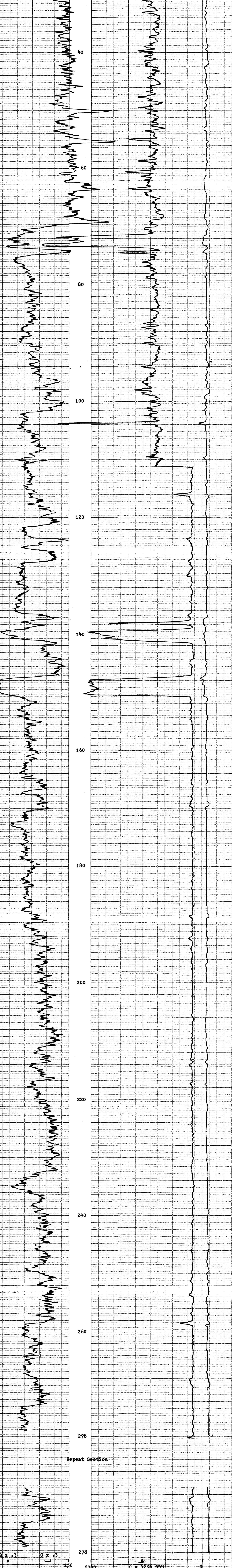
ADDITIONAL SONDES RUN				REMARKS	
SONDE	LOG	GENERAL SCALE LOG	DETAIL SCALE LOG	REFER TO ADDITIONAL HEADINGS	
81	N-N	1:200			Gamma above 111m run with no source on sonde.
Verticality					

B PB COAL LITHOLOGY LOG

CALIBRATION DATA					
JIG No	3	VALUE	3000 @ 2" DIAM	JIG CAL DATE	1/7/78
JIG MARK	SHOWN AT ABOVE VALUE	3.3		JIG VALUE	3250 @ 1.58 cm ³
				SPAN	6000
				NORM	SDU CPS = 6.85
					2 ins 955 cps
					2 ins 495 cps

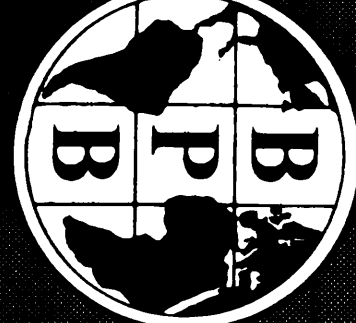
GAMMA RAY	DEPTH	COAL BULK DENSITY	CALIPER
		g/cm ³	INCHES

HOLE SIZE CORRECTION DATA			
API	150	6000	s d u
			0 7 dia 2"



GAMMA RAY	DEPTH	COAL BULK DENSITY	CALIPER
		g/cm ³	INCHES

BOREHOLE BP #55 - Sukunka 1978 AREA B.C.
 CLIENT BP Coal COUNTRY Canada



HP - SUKUNKA 78 (3) A

COAL QUALITY LOG

BOREHOLE DATA REFER TO LITHOLOGY LOG
 OPERATION DATA REFER TO LITHOLOGY LOG
 EQUIPMENT AND RECORDING DATA
 COAL COMBINATION SONDE
 LOG TAPPING PANEL SIDEWALL POSITION
 LOG TOP SPEED REVERSE SPEED SECS NORM
 GAMMA Y 1 R 24 2 1.3
 L.S. DENSITY Y 1 R 24 1 C.8.4
 SOURCE SONDE AND CALIBRATION
 REFER TO LITHOLOGY LOG

BOREHOLE BP #55 - Sukunka 1978
 CLIENT BP Coal
 AREA B.C. DEPTH SCALE 1:20
 COUNTRY Canada
 DATE LOGGED 27 July '78 2 of 4 LOGS

SONDE TYPE:
 COAL COMBINATION SONDE
 LOG SUITE:
 GAMMA RAY
 L.S. DENSITY

REMARKS
 Detail from 76-69m is above
 water level.

665

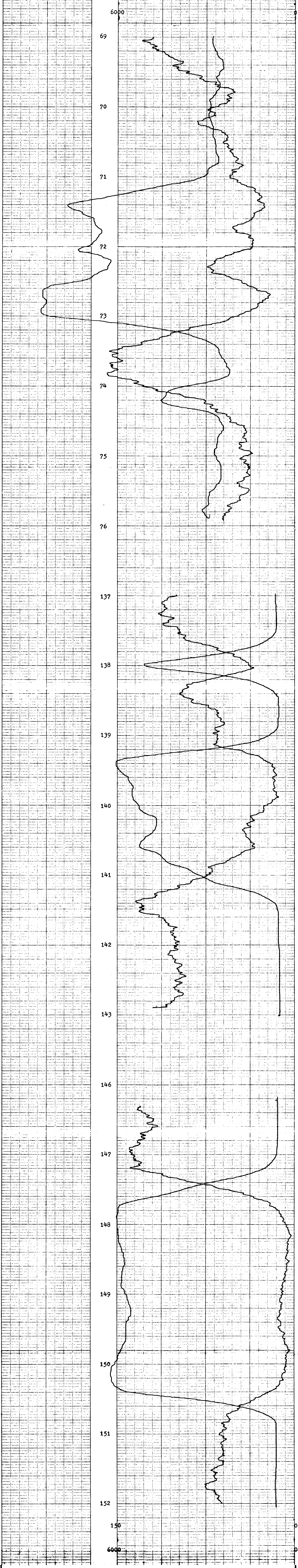
B P B COAL QUALITY LOG

DEPTH GAMMA RAY
 COAL BULK DENSITY
 g/cm^3

HOLE SIZE CORRECTION DATA

2'	12	125	13	135	14	145	15	155	16	17	18	19	20	22	24	30
4'																
6'																
8'																

150 API 0
 6000 s d u 0



150 API 0
 6000

DEPTH GAMMA RAY
 COAL BULK DENSITY
 g/cm^3



BOREHOLE BP #55 - Sukunka 1978
 CLIENT BP Coal
COAL QUALITY LOG

AREA B.C.
 COUNTRY Canada

22-312114 71/314



BOREHOLE BP #55 - Sukunka 1978
 CLIENT BP Coal

AREA B.C.
 DEPTH SCALE 1:20
 COUNTRY Canada

DATE LOGGED 27 July 1978
 3.07-4.1005

BOREHOLE DATA REFER TO LITHOLOGY LOG
 OPERATION DATA REFER TO LITHOLOGY LOG

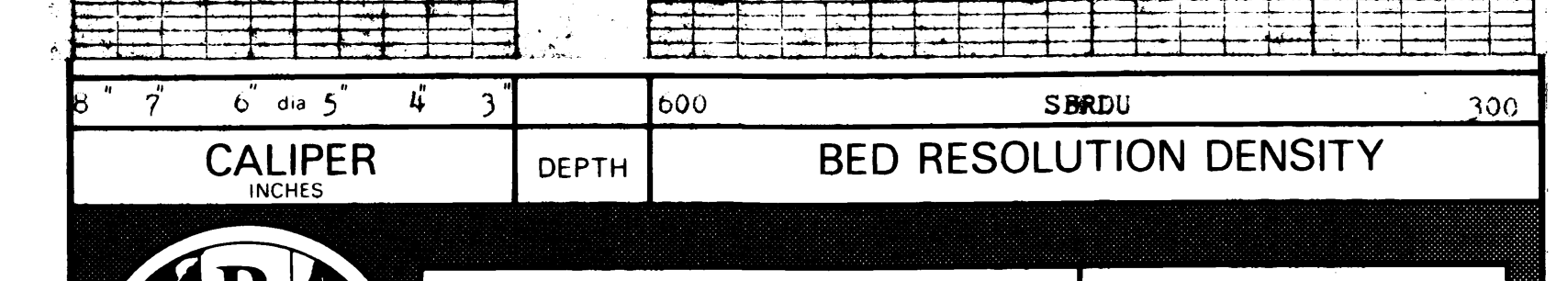
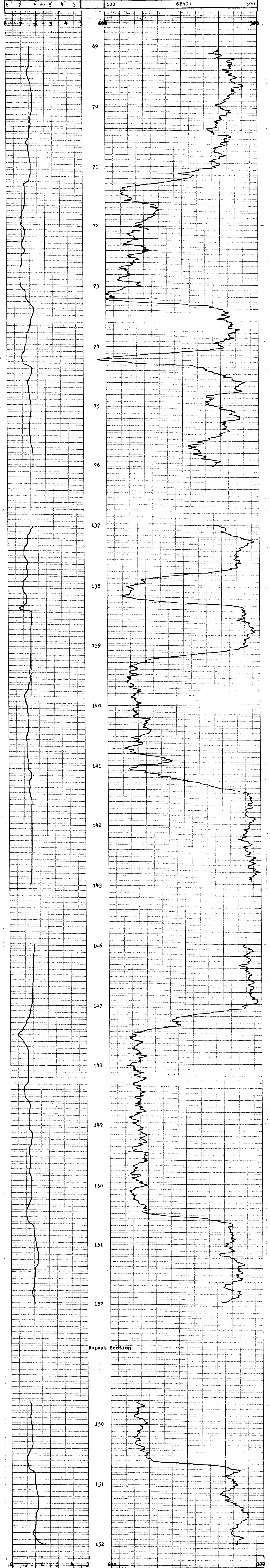
SEAM THICKNESS LOG
 EQUIPMENT AND RECORDING DATA
 COAL COMBINATION SONDE

SONDE TYPE:
 COAL COMBINATION SONDE
 LOG SUITE:
 CALIPER
 BR DENSITY

SEAM THICKNESS LOG INTERVALS
 FROM 152 143 76
 TO 146 137 69
 INTERVAL 6 6 7
 INTERVAL TOTAL 19.1

665

B P B SEAM THICKNESS LOG



BOREHOLE BP #55 - Sukunka 1978
 CLIENT BP Coal

AREA B.C.
 COUNTRY Canada

SEAM THICKNESS LOG



NEUTRON-NEUTRON LOG

BP - SIKUNKA TRAIL

COMPANY BP Coal
 BOREHOLE BP #55 - Sukunka 1978
 STATE B.C. COUNTRY Canada
 Permanent Datum _____ Elev. _____ m.
 Log measured from _____ m. above P.D.
 Drilling measured from _____ m. above P.D.

DATE 27 July 1978
 TIME 0
 Casing (ft) 279m
 Depth Measured 279.3m
 Mud Name Water

Run _____
 Date _____
 Time _____
 Casing (ft) _____
 Depth Measured _____
 Mud Name _____

Bit Size 1 _____ to _____
 2 _____ to _____
 3 _____ to _____

Casing Size 1 _____
 2 _____

Run @ Meas Temp _____
 From @ Meas Temp _____
 From @ Meas Temp _____
 From @ Meas Temp _____

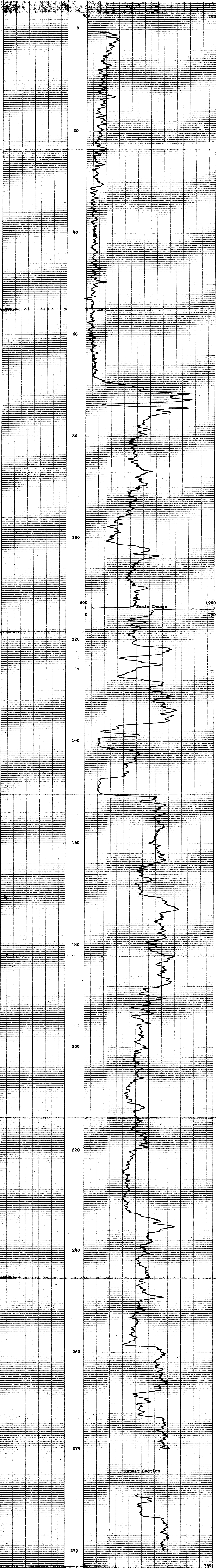
Operating time _____
 Tools used _____
 Recorded by R. Briston
 Witness D. Mitchell

REMARKS

Changes in Mud Type or Additional Samples		Scale Changes			
Date	Sample No.	Type Log	Depth	Scale Up Hole	Scale Down
		N-N	114m	800-1900 SNU	0-750 SNU

Equipment Data		Logging Data			
Run No.	Tool Type	Tool Position	Other	Log	Source No.

Log		Depths		Speed	T.C.	Norm.	Source No.
From	To	From	To				
N-N	279	0	9	1	0.74	81	N2479



COMPANY BP Coal
 BOREHOLE BP #55 - Sukunka 1978
 STATE B.C.
 COUNTRY Canada

665



22- Sukunka 71 (51A)

SONDE TYPE: COAL
COMBINATION SONDE
LOG SUITE: GAMMA RAY
LS DENSITY
CALIPER

COAL LITHOLOGY LOG

BOREHOLE BF #56 - Sukunka 1978
CLIENT BP Coal
AREA B.C.
COUNTRY Canada
DEPTH SCALE 1:200
DATE LOGGED 28 July '78
1 OF 4 LOGS

BOREHOLE DATA
PERMANENT DATUM Ground Level
ELEVATION OF PD 878
DRILLER G.L.
MEASUREMENTS FROM G.L. 123.3m
DEPTH REACHED 123.5m
CASING SIZE C.2m
BIT SIZES 1 5 1/2" TO 6m
2 5" TO 1.1 D.
3 3" TO 6.2m
4 2" TO
CASING SIZES 1 5 1/2" TO 6.2m
2 5" TO
3 3" TO
4 2" TO
FLUID DATA
NATURE WATER
SG
LEVEL
VISCOSITY
From at meas temp
B.H.T.

39-25m (rising)
665

OPERATION DATA
FIRST READING 121m
LAST READING 121m
INTERVAL LOGGED V23/21
UNIT - TRUCK NO K. Bishop
ENGINEER C. Bickford
WITNESS

EQUIPMENT AND RECORDING DATA

LOG	EQUIPMENT		TAPING			PANEL		CAL COEFF	DEPTHS			SEAM LOG RUN	
	SONDE	SOURCE	LOG TAPED	RECORD SPEED	DIRECT or REPLAY	SPEED	T.C SECS		NORM	FROM	TO		INTERVAL
GAMMA RAY LS DENSITY CALIPER	110	M5852	3	Y	9	D	9	1	1.3	121	23	98	Y
			42	Y	9	D	9	1/3	6.9	121	0	121	Y
		SIDEWALL POSITION		Y	9	R	9	1/3	-				

COAL QUALITY/SEAM THICKNESS LOG INTERVALS (Refer to relevant log)

FROM	117	64	
TO	102	59	INTERVAL TOTAL
INTERVAL	15	5	20m

ADDITIONAL SONDES RUN				REFER TO ADDITIONAL HEADINGS	REMARKS
SONDE	LOG	GENERAL SCALE LOG	DETAIL SCALE LOG		
81	N-N	1:200			Gamma ray not replayed above water level
	Verticality				

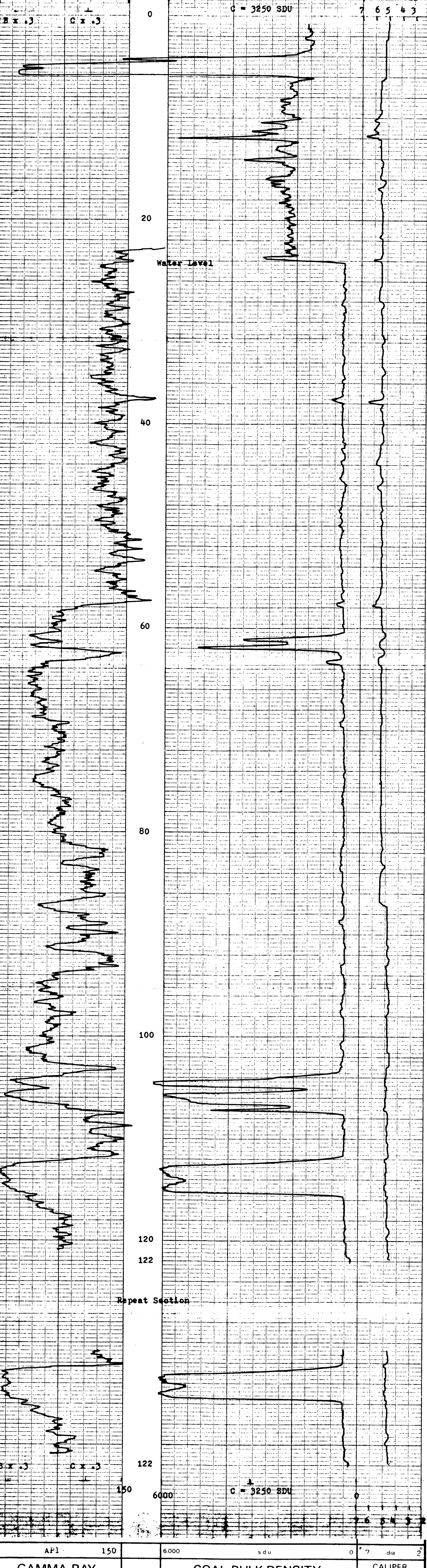
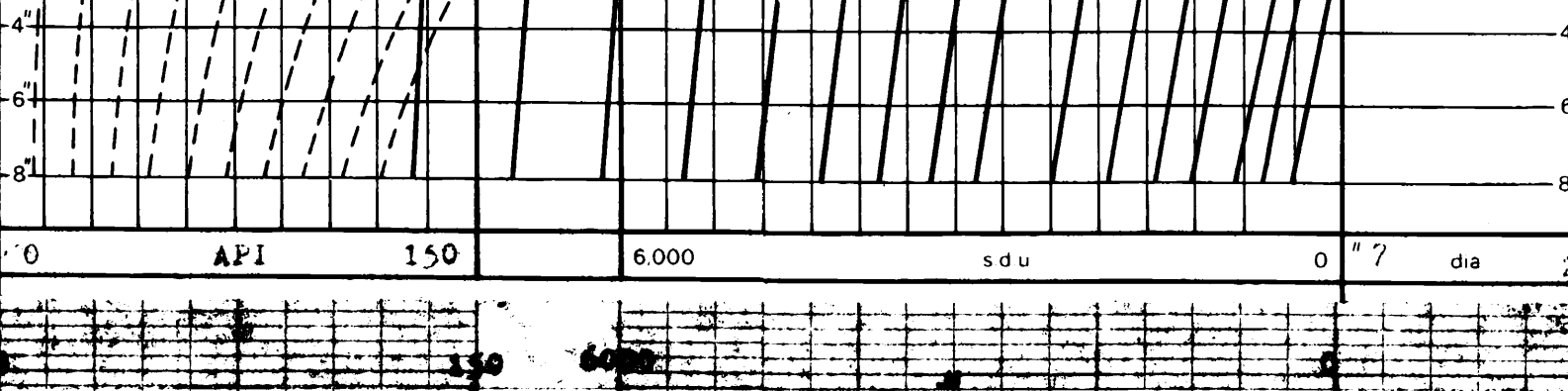
B PB COAL LITHOLOGY LOG

CALIBRATION DATA

JIG No 3 VALUB00 @ 2" DIAM JIG CAL DATE 1/7/78 JIG VALUE 3250 SDU @ 1.58 m³ 7 ins 955 cps
JIG MARK SHOWN AT ABOVE VALUE - 3.33 JIG No 42 SPAN 6000 NORM SDU CPS = 6.90 2 ins 490 cps

GAMMA RAY DEPTH COAL BULK DENSITY CALIPER

HOLE SIZE CORRECTION DATA



GAMMA RAY DEPTH COAL BULK DENSITY CALIPER

BOREHOLE BF #56 - Sukunka 1978 AREA B.C.
CLIENT BP Coal COUNTRY Canada
COAL LITHOLOGY LOG



BP - SUKUNKA 21 (S) 17



COAL QUALITY LOG

BOREHOLE BP #56 - Sukunka 1978
 CLIENT BP Coal
 AREA B.C.
 COUNTRY Canada
 DATE LOGGED 28 July '78
 DEPTH SCALE 1:20
 2 of 4 LOGS

BOREHOLE DATA REFER TO LITHOLOGY LOG
 OPERATION DATA REFER TO LITHOLOGY LOG
 EQUIPMENT AND RECORDING DATA

COAL COMBINATION SONDE
 LOG TAINING SIDEWALL POSITION
 LOG SPEED 2.4
 LOG ENERGY 1.3
 LOG RESISTIVITY 1 R 2.3 1 6.9

COAL QUALITY LOG INTERVALS

FROM	117	64
TO	102	59
INTERVAL	15	5
FROM		
TO		
INTERVAL		
REMARKS		

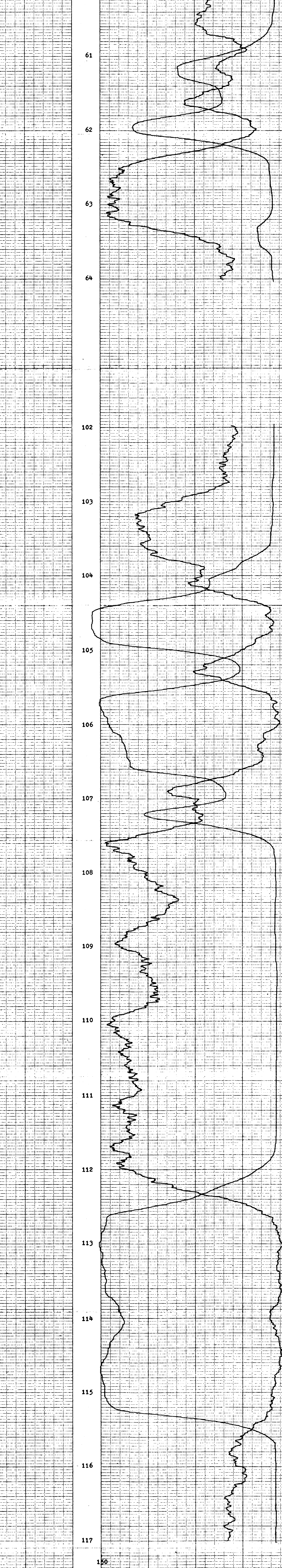
BPB COAL QUALITY LOG

DEPTH GAMMA RAY
 COAL BULK DENSITY g/cm^3

HOLE SIZE CORRECTION DATA

2"	1.2	1.25	1.3	1.35	1.4	1.45	1.5	1.55	1.6	1.7	1.8	1.9	2.0	2.2	2.4	3.0
----	-----	------	-----	------	-----	------	-----	------	-----	-----	-----	-----	-----	-----	-----	-----

150 API 0
 6000 s d u 0



6000 s d u 0
 150 API 0

DEPTH GAMMA RAY
 COAL BULK DENSITY g/cm^3

BOREHOLE BP #56 - Sukunka 1978
 CLIENT BP Coal
 AREA B.C.
 COUNTRY Canada

COAL QUALITY LOG



665

72 - SEAM 29 71 (3) 12



BOREHOLE BP #56 - Sukunka 1978
 CLIENT BP Coal

AREA B.C.
 COUNTRY Canada

DATE LOGGED 28 July '78

DEPTH SCALE 1:20

3 or 4 LOGS

BOREHOLE DATA REFER TO LITHOLOGY LOG
 OPERATION DATA REFER TO LITHOLOGY LOG
 EQUIPMENT AND RECORDING DATA REFER TO LITHOLOGY LOG

SEAM THICKNESS LOG

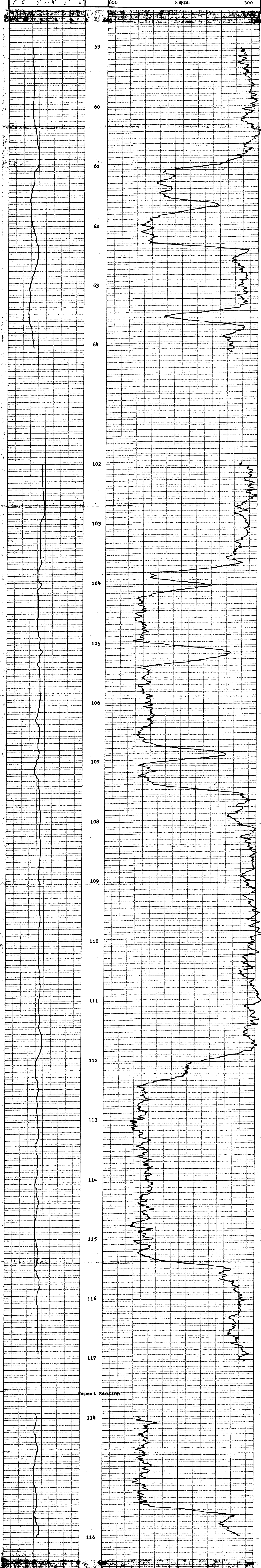
SONDE TYPE: COAL
 COMBINATION SONDE
 LOG SUITE:
 CALIPER
 BR DENSITY

SEAM THICKNESS LOG INTERVALS

FROM	117	64
TO	102	52
INTERVAL	15	5
FROM		
TO		
INTERVAL		
TOTAL		
REMARKS		

665

B P B SEAM THICKNESS LOG



CALIPER INCHES	DEPTH	BED RESOLUTION DENSITY
7" 6" 5" dia 4" 3" 2"	600	SBRDU 300



BOREHOLE BP #56 - Sukunka 1978
 CLIENT BP Coal

AREA B.C.
 COUNTRY Canada

SEAM THICKNESS LOG

PR-5061000 7/13/78



NEUTRON-NEUTRON LOG

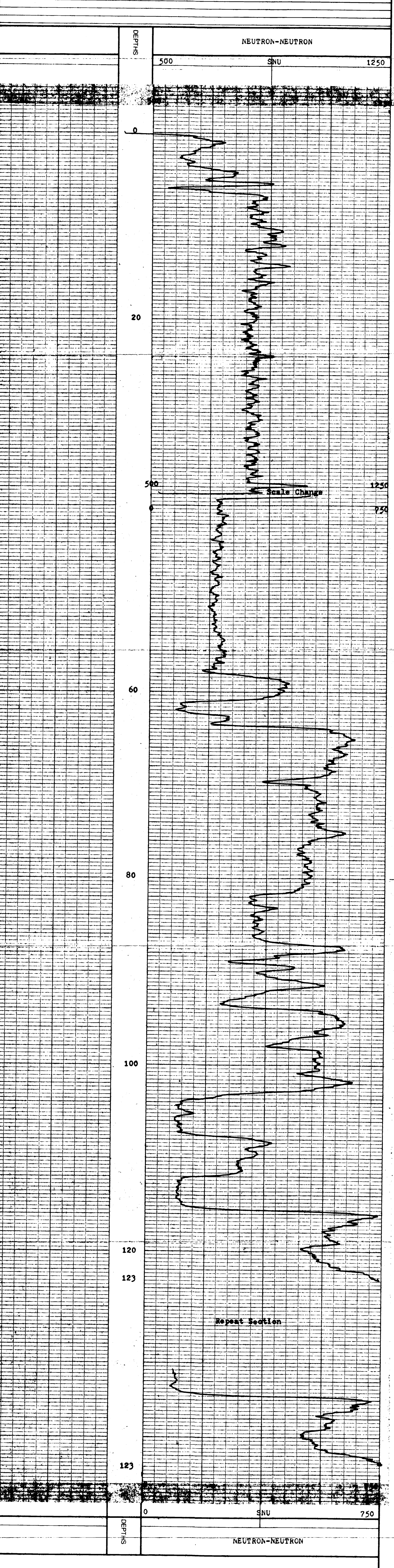
COMPANY BP Coal
 BOREHOLE BP #56 - Sukunka 1978
 STATE B.C. COUNTRY Canada

Permanent Datum _____ Elev. _____ m.
 Log measured from _____ Ground Level _____ m. above P.D.
 Drilling measured from _____ Ground Level _____ m. above P.D.

Run No. 1 Date 28 July 1978
 Last Reading 123m
 Interval Measured 0
 Casing BPH 123m
 Casing Driller 6.2m
 Depth Rec'd 6.2m
 Bottom Driller 123.5m
 Mud Nature Water
 SG Viscosity _____
 Bit Size 5 7/8" to 8 6m
 Casing Size 5 7/8" to 6.2m
 Rm @ Meas Temp _____
 Rmf @ Meas Temp _____
 Rmc @ Meas Temp _____
 BHT _____
 Operating Time 3 1/2 hrs.
 Tracked No V23/21
 Recorded By R. Bishop
 Witness C. Bickford

REMARKS

Changes in Mud Type or Additional Samples		Scale Changes	
Date	Sample No.	Type Log	Scale Up Hole
		N-N	500-1250 SNU
Depth - Driller		Scale Down	0-750 SNU
Type Fluid in Hole			
Dens.	Visc.		
ph	Fluid Loss		
Source of Sample		Equipment Data	
Rm @ Meas Temp		Run No.	Tool Type
Rmf @ Meas Temp			Tool Position
Rmc @ Meas Temp			Other
Source	Rmf		
	Rmc		
Rm @ BHT			
Rmf @ BHT			
Rmc @ BHT			
Logging Data			
Log	Depths	Speed	T.C.
	From	To	
N-N	123	0	9
			1
			.75
			81
			N2479



COMPANY BP Coal
 BOREHOLE BP #56 - Sukunka 1978
 STATE B.C.
 COUNTRY Canada

665



12 - SUKUNKA TR (S1A)

COAL LITHOLOGY LOG

BOREHOLE DATA

PERMANENT DATUM: Ground Level
 ELEVATION OF PD: 8 ps
 DRILLER: G.L.
 MEASUREMENTS FROM: G.L.
 DEPTH REACHED: 147.0m
 CASING SHOE: 7m
 BIT SIZES: 1 5" TO 1.1/2", 2 TO TO, 3 TO TO, 4 TO TO, 5" TO 7m

FLUID DATA

NATURE: Water
 LEVEL: c. 40m
 VISCOSITY: from at meas temp
 B.H.T.: 665

SONDE TYPE: COAL COMBINATION SONDE

LOG SUITE: GAMMA RAY, L.S DENSITY, CALIPER

DATE LOGGED 30 July '78

AREA: B.C., DEPTH SCALE: 1:200
 COUNTRY: Canada, 1 of 4 LOGS

BOREHOLE: BP #57 - Sukunka 1978
 CLIENT: BP Coal

EQUIPMENT AND RECORDING DATA

LOG	EQUIPMENT			TAPING			PANEL			CAL COEFF	DEPTHS			SEAM LOG RUN
	SONDE	SOURCE	CALIBRATOR	LOG TAPED	RECORD SPEED	DIRECT or REPLAY	SPEED	T.C SECS	NORM		FROM	TO	INTERVAL	
GAMMA RAY L.S DENSITY CALIPER	110	M5852	3	Y	9	D	9	1	1.3	145	0	145	Y	
			42	Y	9	D	9	1/3	6.9	145	0	145	Y	
				Y	9	R	9	1/3	-		145	0	145	Y

COAL QUALITY/SEAM THICKNESS LOG INTERVALS (Refer to relevant log)

FROM	TO	INTERVAL	INTERVAL TOTAL
145	134	44	
138	129	37	
7	5	7	19m

ADDITIONAL SONDES RUN

SONDE	LOG	GENERAL SCALE LOG	DETAIL SCALE LOG	REFER TO ADDITIONAL HEADINGS
81	N-N	1:200		

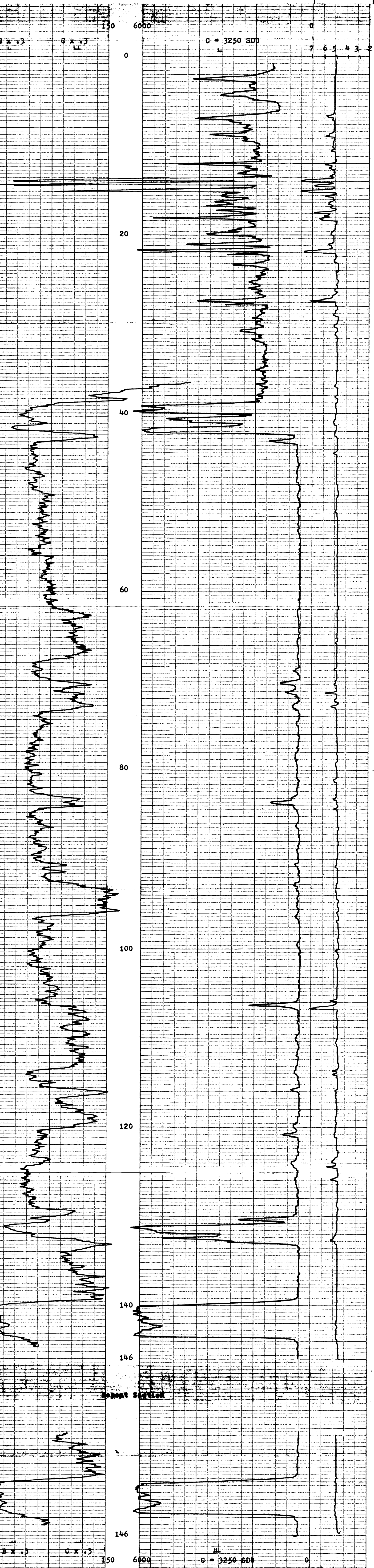
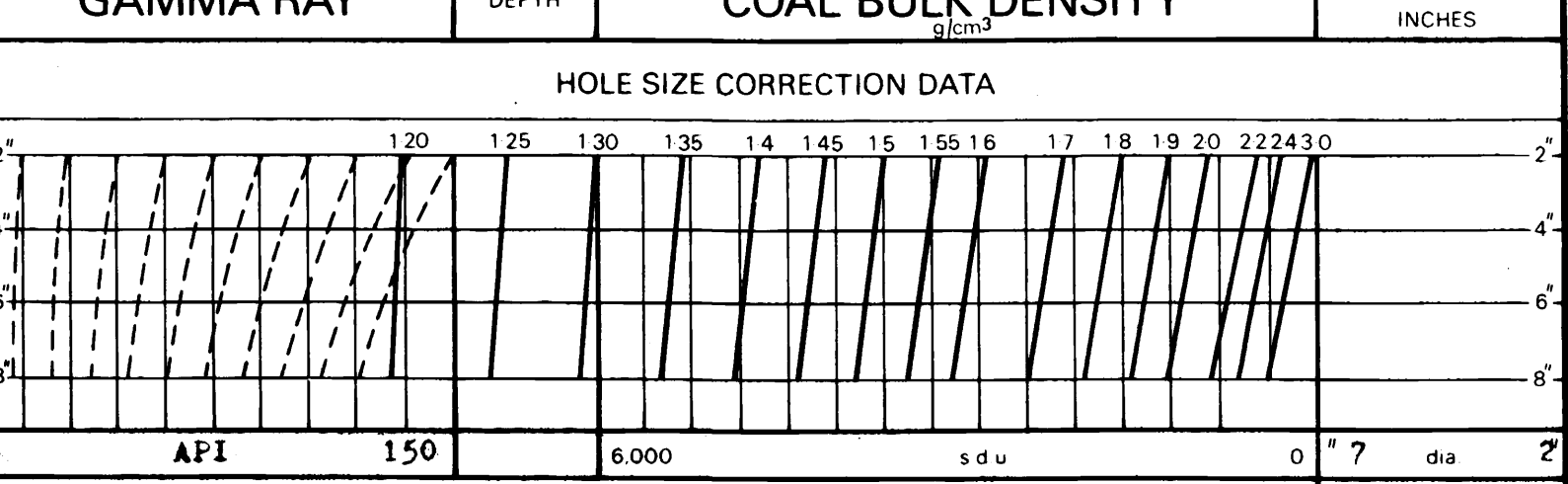
REMARKS

CCS stuck in hole on final run - gamma not recorded above water level, also no verticality.

B PB COAL LITHOLOGY LOG

CALIBRATION DATA

JIG No 3	VALUB00@ 2" DIAM	JIG CAL DATE 1/7/78	JIG VALUE 3250 SDU @ 1.58m ³	7 ins 960 cps
JIG MARK SHOWN AT ABOVE VALUE -3.33		JIG No 42	SPAN 6000	NORM SDU CPS = 6.90
				2 ins 495 cps



GAMMA RAY	DEPTH	COAL BULK DENSITY	CALIPER
		g/cm ³	INCHES



BOREHOLE: BP #57 - Sukunka 1978
 CLIENT: BP Coal
 AREA: B.C., COUNTRY: Canada

COAL LITHOLOGY LOG



ME - SUKUNKA 78 (31A)

BOREHOLE 3P #57 - Sukunka 1978
CLIENT BP Coal

AREA B.C.
COUNTRY Canada

DEPTH SCALE 1:20
DATE LOGGED 30 JULY '78

BOREHOLE DATA REFER TO LITHOLOGY LOG

OPERATION DATA REFER TO LITHOLOGY LOG

EQUIPMENT AND RECORDING DATA

COAL COMBINATION SONDE

SONDE TYPE:

COAL COMBINATION SONDE

LOG SUITE:
GAMMA RAY
L.S. DENSITY

665

BPB COAL QUALITY LOG

GAMMA RAY COAL BULK DENSITY

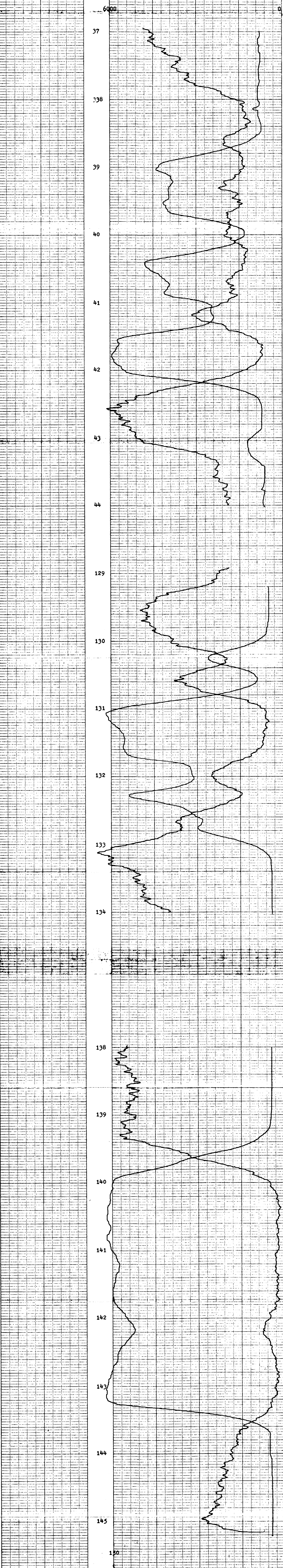
g/cm³

HOLE SIZE CORRECTION DATA

DEPTH (m)	HOLE SIZE (cm)
2'	125
4'	130
6'	135
8'	140
	145
	150
	155
	160
	170
	180
	190
	200
	22
	24
	30

150 API

6.000 s d u



150 API

6.000 s d u

COAL BULK DENSITY GAMMA RAY



BOREHOLE BP #57 - Sukunka 1978
CLIENT BP Coal

AREA B.C.
COUNTRY Canada

COAL QUALITY LOG

22 - BLUE HOLE 71(3)A



BOREHOLE BF #57 - Sukunka 1978
 CLIENT BP Coal

AREA B.C.
 COUNTRY Canada
 DATE LOGGED 30 July '78

DEPTH SCALE
1:20
30' - 4000'

SEAM THICKNESS LOG

THICKNESS LOG

BOREHOLE DATA REFER TO LITHOLOGY LOG
 OPERATION DATA REFER TO LITHOLOGY LOG
 EQUIPMENT AND RECORDING DATA

COAL COMBINATION SONDE
 LOG TAPPING SIDEWALL POSITION
 LOG RECORD SPEED TO NOM
 CALIBER 1 1 R 2 1 1-785
 BR DENSMY 1 1 R 2 1 1-785
 SOURCE SONDE AND CALIBRATION
 REFER TO LITHOLOGY LOG

SONDE TYPE:
 COAL COMBINATION SONDE

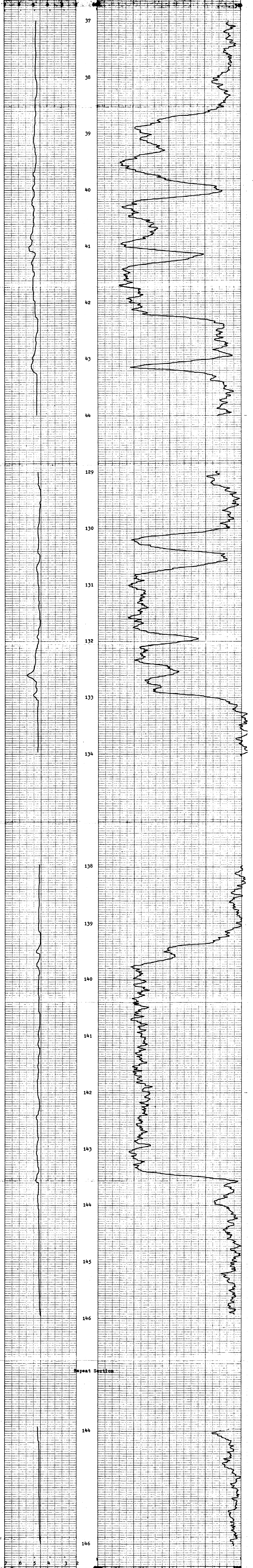
LOG SUITE:
 CALIBER
 BR DENSITY

SEAM THICKNESS LOG INTERVALS

FROM	14.5	13.4	4.4
TO	1.8	1.29	3.7
INTERNAL FROM	7	5	7
INTERNAL TO			
INTERNAL TOTAL			3.0m

REMARKS
665

B P B SEAM THICKNESS LOG



CALIPER INCHES	DEPTH	BED RESOLUTION DENSITY
7 6 5 dia 4 3 2	600	SBRDU 300

BOREHOLE BP #57 - Sukunka 1978 AREA B.C.
 CLIENT BP Coal COUNTRY Canada



SEAM THICKNESS LOG

PR - SUKUNKA 71514



NEUTRON-NEUTRON LOG

COMPANY BP Coal
 BOREHOLE BP #57 - Sukunka 1978
 STATE B.C. COUNTRY Canada

Permanent Datum Ground Level Elev. m.
 Log measured from Ground Level m. above P.D.
 Drilling measured from Ground Level m. above P.D.

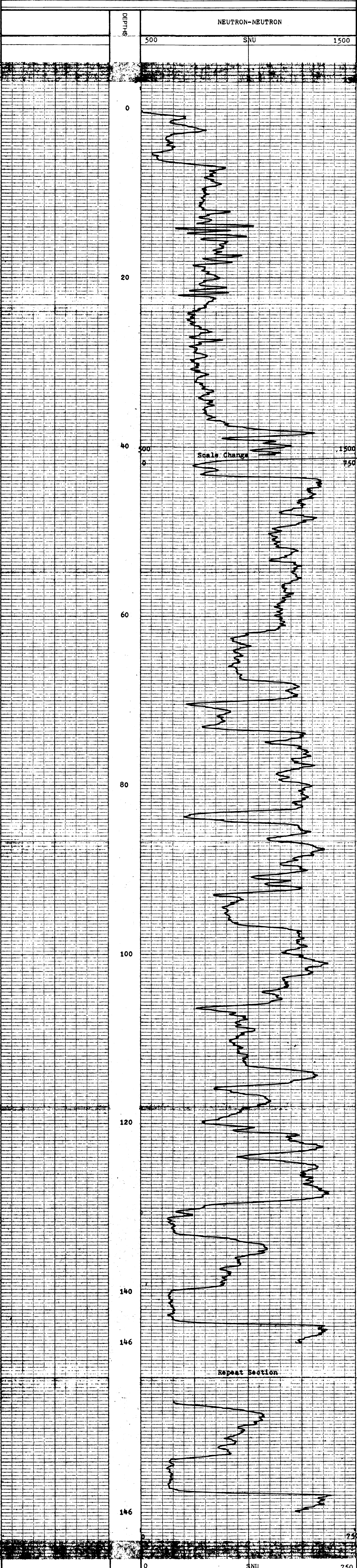
Run No. 1 Date 30 July 1978
 First Reading 146m
 Interval Measured 0
 Casing Depth 7m
 Depth Measured 147m
 Bottom Driller 147m
 Mud Name Water

SG Viscosity
 BH Size 5" to T.D.
 Casing Size 5" to T.D.
 Rm @ Meas Temp
 Rmf @ Meas Temp
 Rmc @ Meas Temp
 BHT
 Operating Time 4 3/4 hrs.
 T-Log No. V23/21
 Recorded By R. Bishop
 Witness P. Cairns

REMARKS

Changes in Mud Type or Additional Samples		Scale Changes			
Date	Sample No.	Type Log	Depth	Scale Up Hole	Scale Down
		N-N	41m	500-1500 SNU	0-750 SNU

Equipment Data		Logging Data									
Run No.	Tool Type	Tool Position	Other	Log	Depths From	To	Speed	T.C.	Norm.	Sonde No.	Source No.
				N-N	146	0	9	1	0.75	81	N2479



COMPANY BP Coal
 BOREHOLE BP #57 - Sukunka 1978
 STATE B.C.
 COUNTRY Canada

665



BOREHOLE BF #58 - Sukunka 1975
 CLIENT BF Coal

AREA B.C.
 COUNTRY Canada
 DATE LOGGED 2 Aug 1975

COAL LITHOLOGY LOG

REMARKS: Borehole Data
 Ground: Lat. 8.
 Elevation of TD: 8.8
 Westermanns Row: 3.4
 Depth Reached: 309m
 Casings Shoe: 4m
 Bit Sizes: 1 6 1/8" to 1 1/2" 2 1/2" to 3 1/2" 4 1/2" to 6 1/2" 8 1/2" to 10 1/2"

SONDE TYPE

LEVEL 132-125m (1st Start)
 SONDE 665

LOG SUITE

GAMMA RAY
 U.S. DENSITY
 CALIPER

OPERATION DATA
 FIRST READING 30cm
 LAST READING 0
 INTERVAL LOGGED 30cm
 UNIT - TRACK No. V27/21
 ENGINEER R. BISHOP
 WITNESS P. Caline

EQUIPMENT AND RECORDING DATA												
COAL COMBINATION SONDE												
LOG	EQUIPMENT	TAPING	PANEL	CAL	DEPTHS		SEAM LOG RUN					
SONDE	SOURCE	LOG TAPED	RECORD SPEED	DIRECT REFLN	SPEED	T.C SECS	NORM	FROM	TO	MITRAL		
GAMMA RAY	110	3	Y	9	D	9	1	1.3	306	0	306	Y
U.S. DENSITY	M5052	42	Y	9	D	9	1	1.3	306	0	306	Y
CALIPER	SIDEWALL POSITION		Y	5	R	9	1	1.3	306	0	306	Y

COAL QUALITY/SEAM THICKNESS LOG INTERVALS (Refer to relevant log)						
FROM	298	276	244	143	136	69
TO	290	268	239	138	129	84
INTERVAL	8	8	5	5	7	5
INTERVAL TOTAL						30m

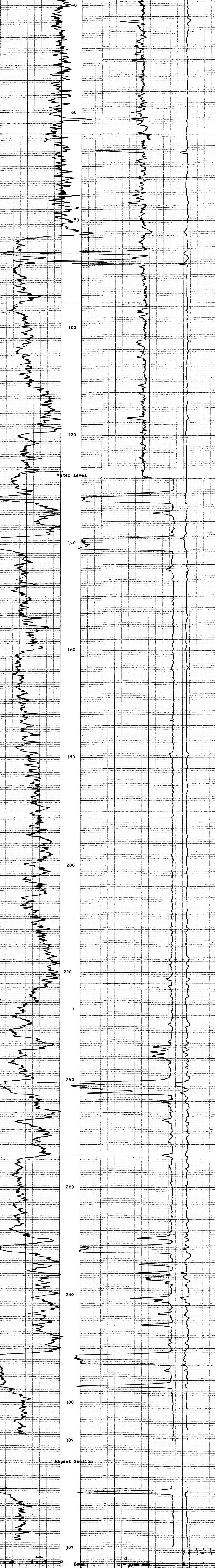
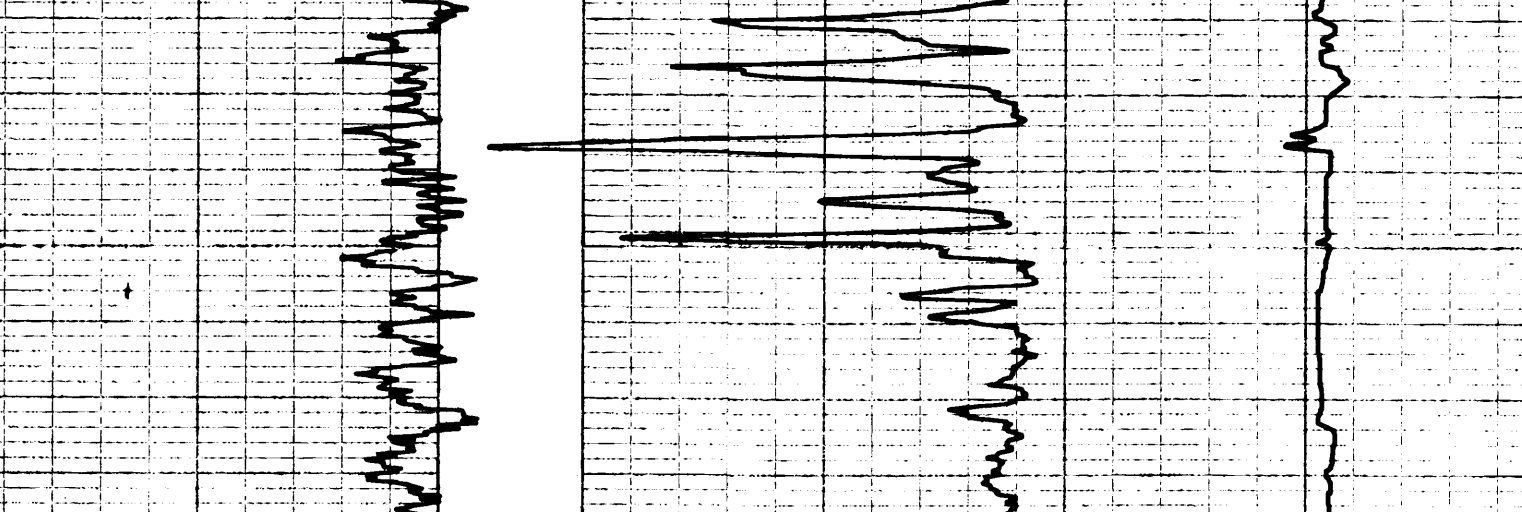
ADDITIONAL SONDES RUN			REMARKS
SONDE	LOG	GENERAL SCALE LOG	
81	N-N	1:200	Gamma run from 120m-0 with no source on sonde (i.e. above water level).
Verticality			

B.P.B. COAL LITHOLOGY LOG

CALIBRATION DATA

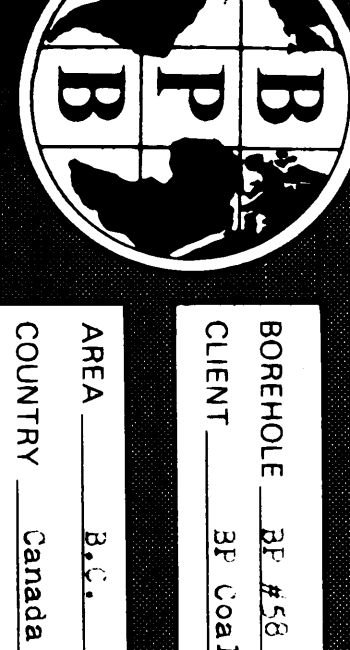
JIG No 3	VALUE 300	2" DIAM	JIG CAL DATE 1/8/78	JIG VALUE 330	SDU @ 1.52 cm ³	7 ms	955 cps
JIG MARK SHOWN AT ABOVE VALUE -3.3			JIG No 42	SPAN 6000	NORM 800	2 ms	490 cps

GAMMA RAY	DEPTH	COAL BULK DENSITY	CALIPER
-----------	-------	-------------------	---------



GAMMA RAY	DEPTH	COAL BULK DENSITY	CALIPER
-----------	-------	-------------------	---------

12 - SUCUNKA 74 (31)



22-21-2014

BOREHOLE #F #58 - Sukunka 127c
 CLIENT #F Coal
 AREA B.C.
 COUNTRY Canada
 DATE LOGGED 3 Aug '72
 DEPTH-SCALE 1:20
 2 of 2 LOGS

BOREHOLE DATA REFER TO LITHOLOGIC LOG
 OPERATION DATA REFER TO LITHOLOGIC LOG
 EQUIPMENT AND RECORDING DATA

COAL COMBINATION SOURCE ORIGINAL POSITION
 LOG TYPING PANEL
 DATE X 1972 R 23 I 3
 U.S. BUREAU OF MINES Y 1-2 R 23 I 3
 SOURCE SONG AND CALIBRATION
 REFER TO LITHOLOGIC LOG

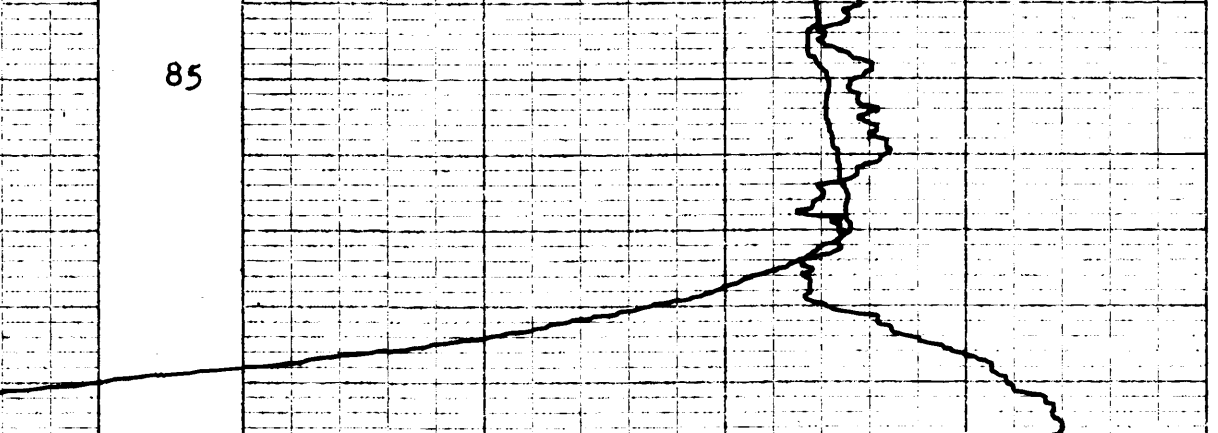
COAL QUALITY LOG INTERVALS
 FROM 224 744
 TO 220 265 239
 INTERVAL 4 5
 FROM 143 176 89
 TO 139 127 84
 FROM 5
 REMARKS 100' depth 1.78
 L.S. DENSITY

665

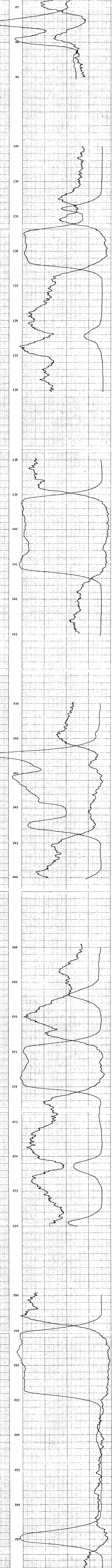
B P B COAL QUALITY LOG

DEPTH GAMMA RAY
 COAL BULK DENSITY g/cm^3

HOLE SIZE CORRECTION DATA



150 API 0
 6000 s.d.u. 0



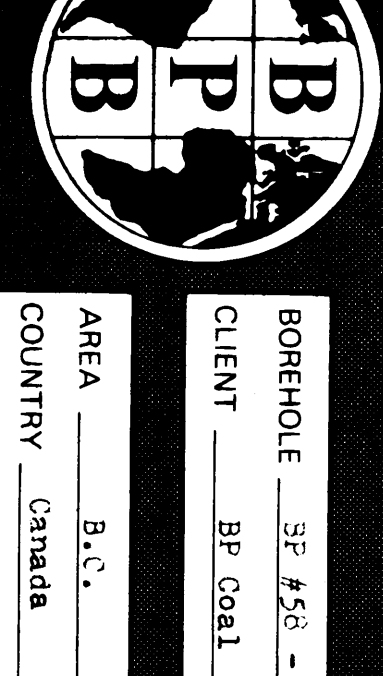
150 API 0
 6000 s.d.u. 0

DEPTH GAMMA RAY
 COAL BULK DENSITY g/cm^3



BOREHOLE #F #58 - Sukunka 127c AREA B.C.
 CLIENT #F Coal COUNTRY Canada
COAL QUALITY LOG

7E SUKUNKA 71814



BOREHOLE SF #58 - Sukunka 1978
 CLIENT BF Coal
 AREA B.C.
 COUNTRY Canada
 DATE LOGGED 3 Aug. '78
 OPERATIONAL 11/20
 30' - 4' LOGS

SEAM THICKNESS LOG

BOREHOLE DATA REFER TO: H/D/O/S/ LOGS
 OPERATION DATA REFER TO: H/D/O/S/ LOGS
 EQUIPMENT AND RECORDING DATA
 COAL COMBINATION SOURCE SIDEWALL POSITION LOGS

LOG NO. 2088
 DATE 12/15/78
 BY J.P. [unclear]
 CHECKED BY [unclear]

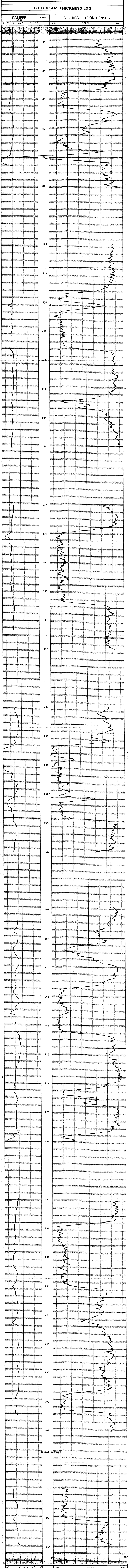
BOREHOLE Y 1-5 X 2 Z 1-76
 CALIPER 1-5 X 2 Z 1-76
 SOURCE SOURCE AND CALIBRATION REFER TO: H/D/O/S/ LOGS

SEAM THICKNESS LOG INTERVALS

FROM	277	278	294
TO	290	295	299
INTERVAL	13	17	5
TOTAL	143	137	92
INTERVAL	132	129	92
SEAM	132	129	92

REMARKS Top detail in slit.

B P B SEAM THICKNESS LOG



CALIPER	DEPTH	BED RESOLUTION DENSITY
8" 7" 6" dia 5" 4" 3"	590	SBRDU 260

BOREHOLE BF #58 - Sukunka 1978
 CLIENT BF Coal
 AREA B.C.
 COUNTRY Canada

SEAM THICKNESS LOG

MY 880028

92-SUKUNKA-77(3)A



NEUTRON-NEUTRON LOG

COMPANY BP Coal
 BOREHOLE BP #58 - Sukunka 1978
 STATE B.C. COUNTRY Canada
 Permanent Datum _____ Elev. _____ m.
 Log measured from _____ Ground Level _____ m. above P.A.
 Drilling measured from _____ Ground Level _____ m. above P.A.

Run No. _____
 Date 1 August 1978
 First Reading 309m
 Last Reading 0
 Interval Measured 309m
 Casing ID 4m

Run No. 1 Date 11200
 Date 3 August 1978
 First Reading 309m
 Last Reading 0
 Interval Measured 309m
 Casing ID 4m

Bottom Recorder 309m
 Mud Nature Water

Bit Size 1 6 1/2" to T.D.
 Casing Size 1 6 1/2" to 4m
 Casing Size 2 _____ to _____
 Run @ Meas Temp _____ @ _____
 Run @ Meas Temp _____ @ _____
 Run @ Meas Temp _____ @ _____
 Run @ Meas Temp _____ @ _____
 Run @ Meas Temp _____ @ _____

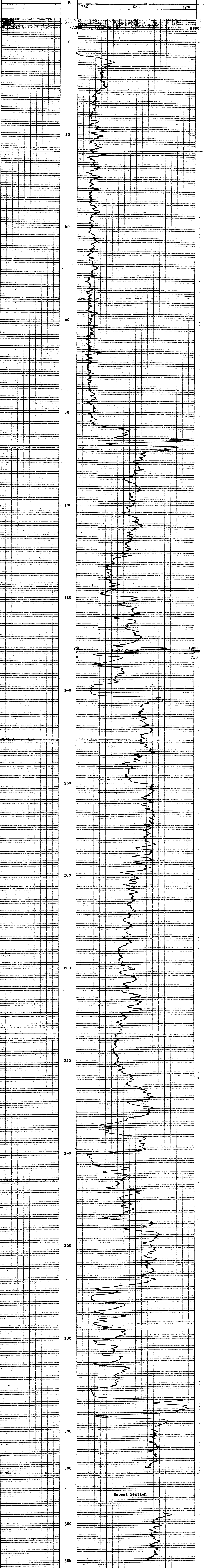
Operating Time 8 hrs.
 Log No. V21/21
 Recorded By R. Blinshop
 Witness F. O'Brien

665

fold here

REMARKS		Scale Changes	
Date	Sample No	Type Log	Scale Up Hole
		N-N	750-1900 SNU
Type Fluid in Hole			0-750 SNU
Dens	Visc.		
ph	Fluid Loss		
Source of Sample			
Rm @ Meas Temp	@	Run No.	Tool Type
Rmf @ Meas Temp	@		Tool Position
Rmc @ Meas Temp	@		Other
Source: Rmf	Rmc		
Rm @ BHT	@		
Rmf @ BHT	@		
Rmc @ BHT	@		

Logging Data		Speed		T.C		Norm		Sondeht		Source No	
Log	Depths	From	To								
N-N	308	0	9	1	0.75	81	N2479				



DEPTHS 0 750

NEUTRON-NEUTRON

COMPANY BP Coal
 BOREHOLE BP #58 - Sukunka 1978
 STATE B.C.
 COUNTRY Canada



22 - SUKUNKA 7E (S)A

COAL

LITHOLOGY LOG

SONDE TYPE:
COAL COMBINATION SONDE

LOG SUITE:
GAMMA RAY
L.S. DENSITY
CALIPER

OPERATION DATA
FIRST READING 10.3m
LAST READING 0
INTERVAL LOGGED 10.3m
UNIT - TRUCK No V23/21
ENGINEER R. Bishop
WITNESS

BOREHOLE BP #59 - Sukunka 1978
CLIENT BP Coal

AREA B.C.
COUNTRY Canada
DATE LOGGED 4 Aug. '78

DEPTH SCALE 1:200
1 of 4 LOGS

BOREHOLE DATA

PERMANENT DATUM	Ground Level
ELEVATION OF P.D.	B.P.B.
MEASUREMENTS FROM	G.L.
DEPTH REACHED	10.5m
CASING SHOE	10.5m
BIT SIZES	1 5" TO 1 1/2" TO 6m 2 TO TO 3 TO TO 4 TO TO
CASING SIZES	1 5 1/2" TO 6m 2 TO TO

FLUID DATA

NATURE	Water
SG	
LEVEL	15.3m
VISCOSITY	
Rm at meas temp	
B.H.T.	

EQUIPMENT AND RECORDING DATA

LOG	EQUIPMENT			TAPING			PANEL			CAL COEFF	DEPTHS			SEAM LOG RUN
	SONDE	SOURCE	CALIBRATOR	LOG TAPED	RECORD SPEED	DIRECT OF REPLAY	SPEED	T.C. SECS	NORM		FROM	TO	INTERVAL	
GAMMA RAY	110		3	Y	9	D	9	1	1.3		103	0	103	Y
L.S. DENSITY		M5852	42	Y	9	D	9	1/3	6.95		103	0	103	Y
CALIPER		SIDEWALL POSITION		Y	9	R	9	1/3	-		103	0	103	Y

FROM	99	91	50	INTERVAL TOTAL
TO	93	85	45	
INTERVAL	6	6	5	

ADDITIONAL SONDES RUN				REFER TO ADDITIONAL HEADINGS	REMARKS
SONDE	LOG	GENERAL SCALE LOG	DETAIL SCALE LOG		
N-N		1:200			

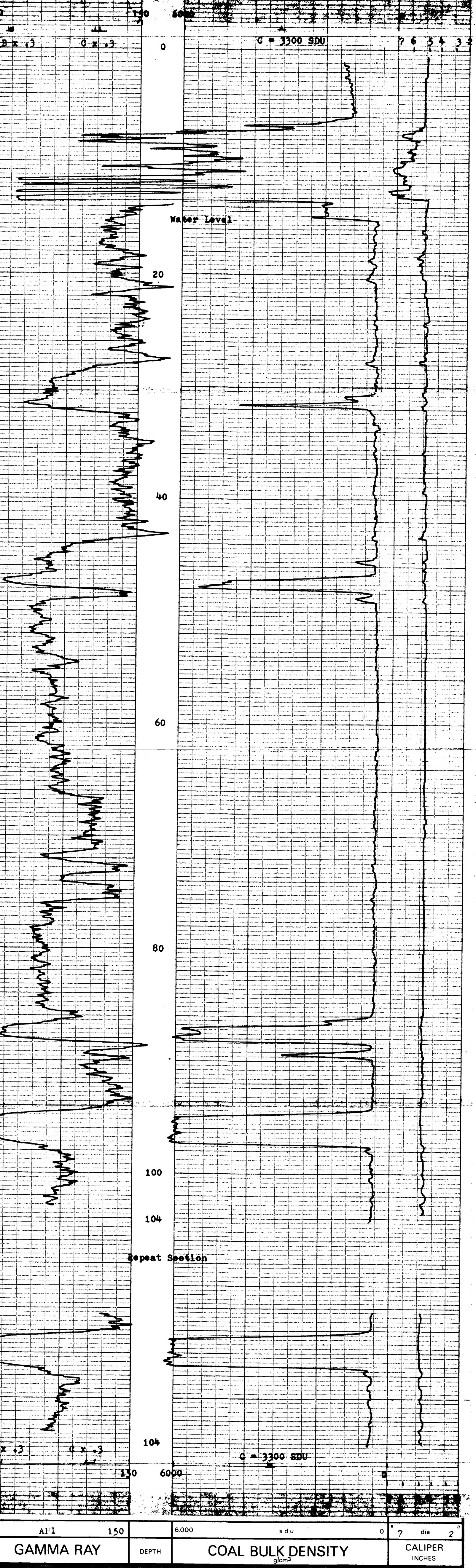
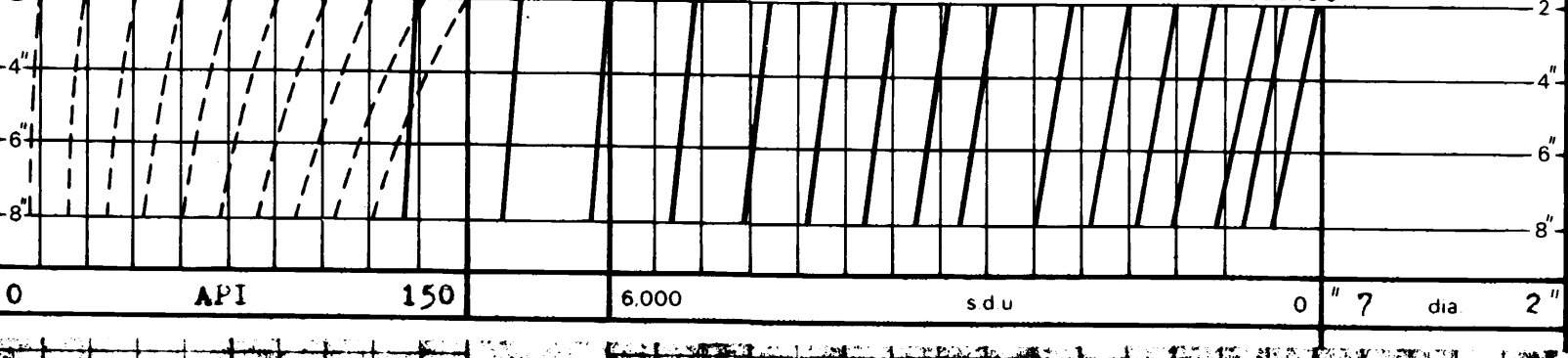
B.P.B. COAL LITHOLOGY LOG

CALIBRATION DATA

JIG No 3	VALUE 300@ 2" DIAM	JIG CAL DATE 1/8/78	JIG VALUE 3300	SDU @ 1.57 g/cm ³	7 ins	95 cps
JIG MARK SHOWN AT ABOVE VALUE -3.3		JIG No 42	SPAN 6000	NORM SDU = 6.95	2 ins	49 cps

GAMMA RAY	DEPTH	COAL BULK DENSITY g/cm ³	CALIPER INCHES
-----------	-------	-------------------------------------	----------------

HOLE SIZE CORRECTION DATA



GAMMA RAY	DEPTH	COAL BULK DENSITY g/cm ³	CALIPER INCHES
-----------	-------	-------------------------------------	----------------

BOREHOLE BP #59 - Sukunka 1978 AREA B.C.
CLIENT BP Coal COUNTRY Canada

COAL LITHOLOGY LOG



BP - SUKUNKA 72 (S) 4

BOREHOLE BP #59 - Sukunka 1978
CLIENT BP Coal

AREA B.C.
COUNTRY Canada

DATE LOGGED 4 Aug. 78

DEPTH SCALE 1:20
2 of 4 LOGS

BOREHOLE DATA REFER TO LITHOLOGY LOG
OPERATION DATA REFER TO LITHOLOGY LOG
EQUIPMENT AND RECORDING DATA

COAL COMBINATION SONDE
SIDEWALL POSITION

LOG TAPPING PANEL COAL
LOG RECORDING SPEED TYPE
TAPED SPEED REPEAT SECS NORM
GAMMA Y 1 R 24 2 1.3
L.S. DENSITY Y 1 R 24 1 6.93

SONDE TYPE:
COAL COMBINATION SONDE

LOG SUITE:
GAMMA RAY
L.S. DENSITY

COAL QUALITY LOG INTERVALS

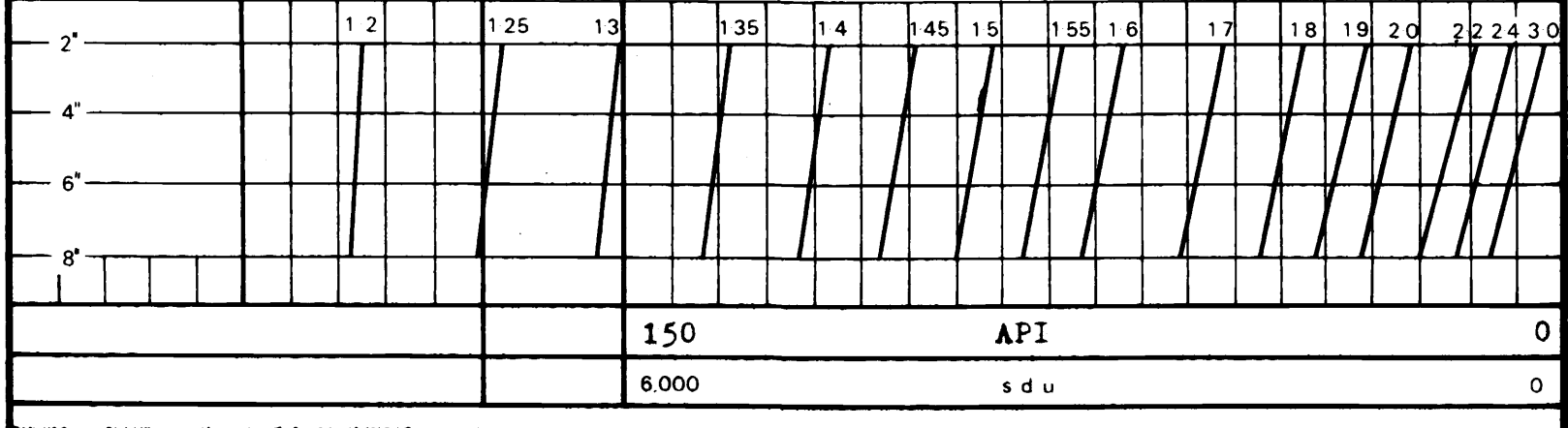
FROM 95 91 50
TO 93 85 45
INTERVAL 6 6 5
INTERVAL TOTAL 11

665

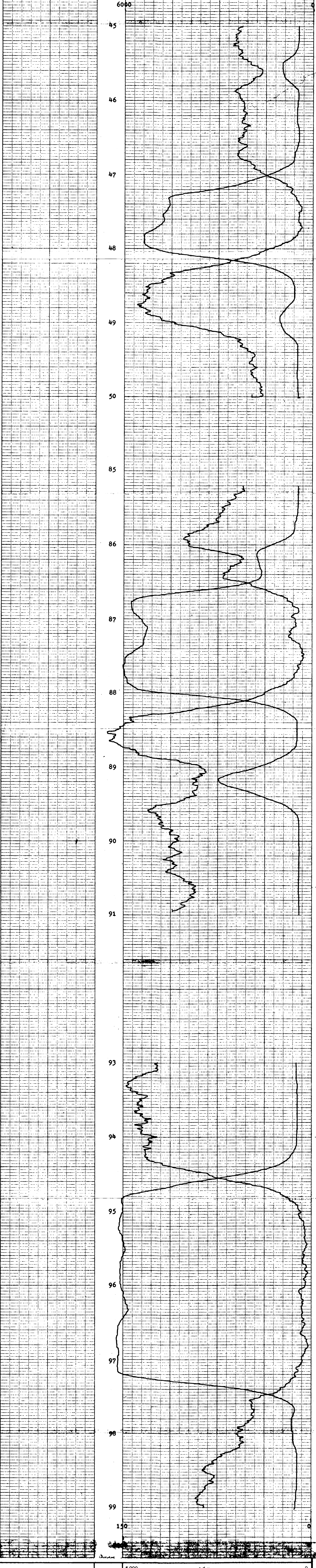
B P B COAL QUALITY LOG

DEPTH GAMMA RAY
COAL BULK DENSITY g/cm^3

SOLE SIZE CORRECTION DATA



150 API 0
6.000 s d u 0



6.000 s d u 0
150 API 0

DEPTH GAMMA RAY
COAL BULK DENSITY g/cm^3

BOREHOLE BP #59 - Sukunka 1978
CLIENT BP Coal

AREA B.C.
COUNTRY Canada

COAL QUALITY LOG



Mc-SUKUNKA 78(S)A



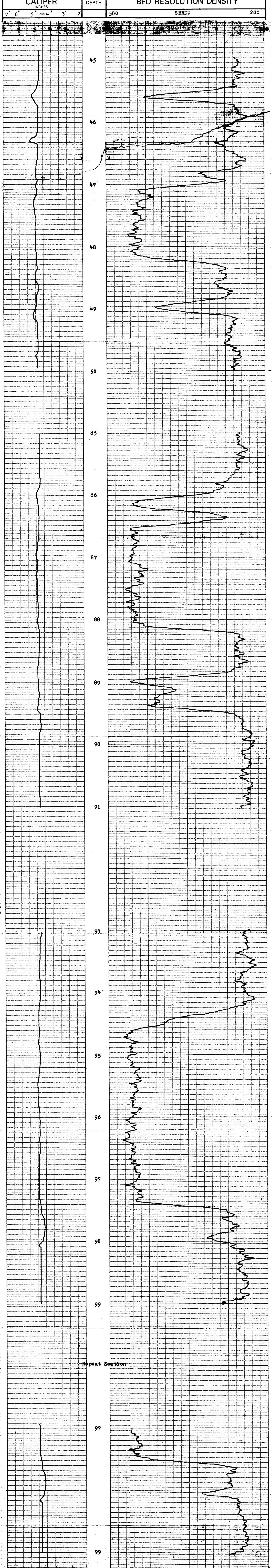
BOREHOLE BP #59 - Sukunka 1978
 CLIENT BP Coal
 AREA B.C.
 COUNTRY Canada
 DEPTH SCALE 1:20
 DATE LOGGED 4 Aug. '78
 30-400GS

BOREHOLE DATA REFER TO LITHOLOGY LOG
 OPERATION DATA REFER TO LITHOLOGY LOG
 EQUIPMENT AND RECORDING DATA
 COAL COMBINATION SONDE SIDEWALL POSITION
 LOG TAPE LOG RECORDING SPEED 100 SEC. NORM
 CALIPER Y 1 R 2 1
 BR DENSMY Y 1 R 2 1 1.76
 SOURCE SONDE AND CALIBRATION REFER TO LITHOLOGY LOG

SEAM THICKNESS LOG INTERVALS
 FROM 99 TO 91 50
 TO 93 85 45
 INTERVAL 6 6 5
 FROM FROM
 TO TO
 INTERVAL TOTAL
 REMARKS ± 1.7m

665

B P B SEAM THICKNESS LOG



CALIPER INCHES	DEPTH	BED RESOLUTION DENSITY
7" 6" 5" dia 4" 3" 2"	580	SBRDU 280



BOREHOLE BP #59 - Sukunka 1978
 CLIENT BP Coal
 AREA B.C.
 COUNTRY Canada
SEAM THICKNESS LOG

DE-50E UNCA 78 (3)A



NEUTRON-NEUTRON LOG

COMPANY BP Coal
 BOREHOLE BP #59 - Sukunka 1978
 STATE B.C. COUNTRY Canada

Permanent Datum _____ Elev. _____ m.
 Log measured from _____ Ground Level _____ m. above P.D.
 Drilling measured from _____ Ground Level _____ m. above P.D.

GRID REF. E _____ N _____ RL _____

Run No. 1 Depth/Scale 1 1200
 Date 4 August 1978
 First Reading 104m
 Last Reading _____
 Interval Measured 104m
 Casing BPP _____
 Casing Driller 6m
 Depth Reached 10.5m
 Bottom Driller 10.5m
 Mud Nature Water

SG Viscosity _____
 Bit Size 5" to T.D.
 Casing Size 1 5 1/4" to 6m
 Casing Size 2 _____
 Casing Size 3 _____
 Rm @ Meas Temp _____
 Rmf @ Meas Temp _____
 Rmc @ Meas Temp _____
 BHT _____
 Operating Time 2 3/4 hrs.
 Truck No. V23/21
 Recorded By R. Bishop
 Witness _____

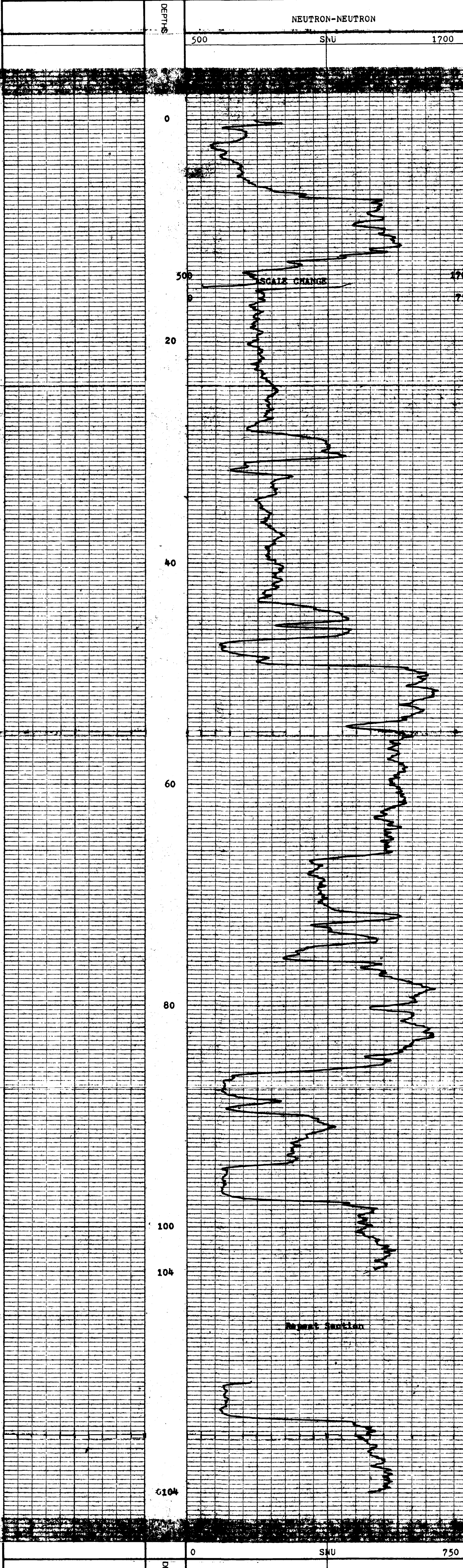
fold here

REMARKS

Changes in Mud Type or Additional Samples		Scale Changes			
Date	Sample No.	Type Log	Depth	Scale Up Hole	Scale Down
		N-N	15m	500-1700 SNU	0-750 SNU

Dens.		Visc.		Equipment Data			
ph.	Fluid Loss		ml	Run No.	Tool Type	Tool Position	Other

Logging Data						
Log	Depths	Speed	T.C.	Norm.	Sonde No.	Source No.
	From To					
N-N	104 0	9	1	0.75	81	N2479



DEPTHS 0 SNU 750

NEUTRON-NEUTRON

COMPANY BP Coal
 BOREHOLE BP #59 - Sukunka 1978
 STATE B.C.
 COUNTRY Canada

665