

2A-2

FORDING RIVER OPERATIONS

SUMMARY REPORT

1984 EXPLORATION & DEVELOPMENT PROGRAM

Appendix 2: Drillhole Logs

ii) Geophysical & Directional Logs

702

ii) Geophysical and Directional Logs

**GEOLOGICAL BRANCH  
ASSESSMENT REPORT**

**00 702**



DISPATCH AREA WELL COUNTY STATE

702

COORDINATES  
N 147 745.4  
S 21 440.3  
ELEVATION 1884.91  
DF  
KB  
G1

Date	Run No. 1	Run No. 2	MUD	Run No. 1	Run No. 2
First Reading			Nature		
Last Reading			Density		
Footage Logged			Viscosity		
By whom Drilled			Resistivity		
Casing From Log			Res. % BHT		
Casing Depth			pH		
Casing Size			Cas. Temp		
Dr. Size			B.H. Temp		
Surface					
			Logged by		
			Witnessed by		

COMPU-LOG V8L2 PLDT 09-20-84

R.H. 690  
FORDING COAL LTD.  
GREENHILLS

HOLE DIAMETER : 10.0  
PROBE # 9055A - 232  
SENSOR #4 CAL STD CPS = 152  
SENSOR #4 CAL RUN CPS = 191  
SENSOR #4 CAL BIAS = 0  
DATA V8L2\*A TRUCK # 367  
JOHN STOKMANS APPL.#7 L1

153

53

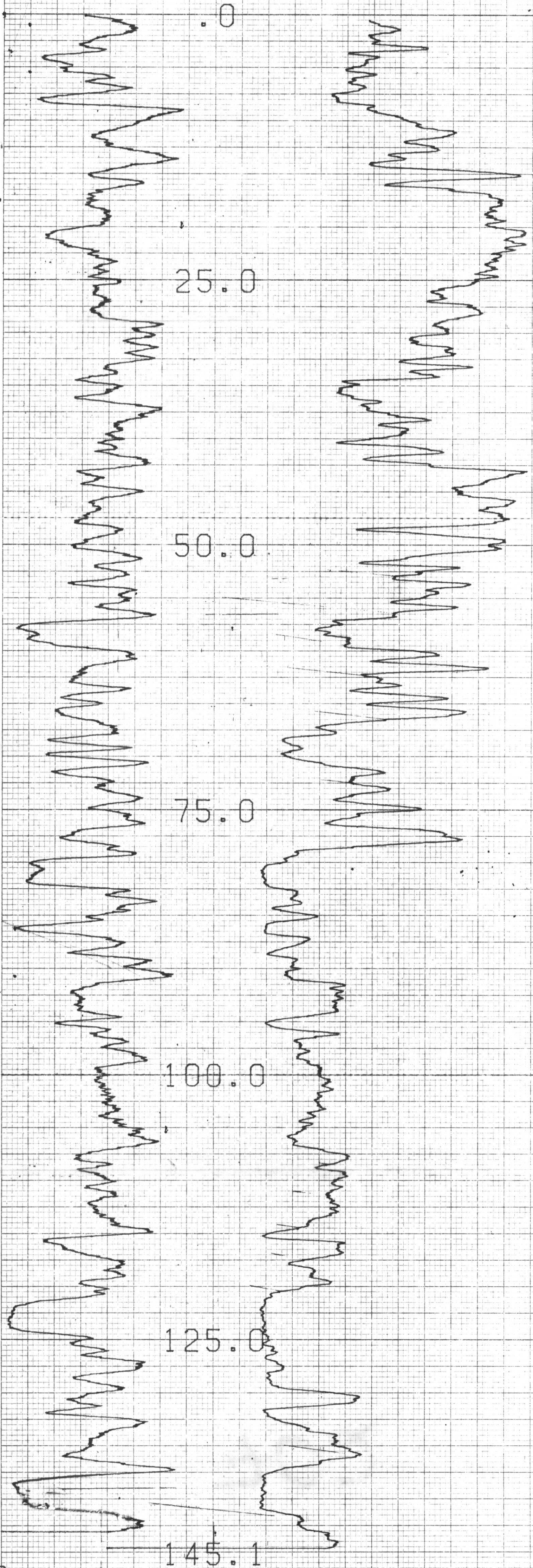
52

52

151

51

51







# WELL LOG

COMPANY  
WELL R.H. 691  
LOCATION CGH.

702

COORDINATES  
N 147 521.2  
S 21 614.0  
ELEVATION 1 860.92

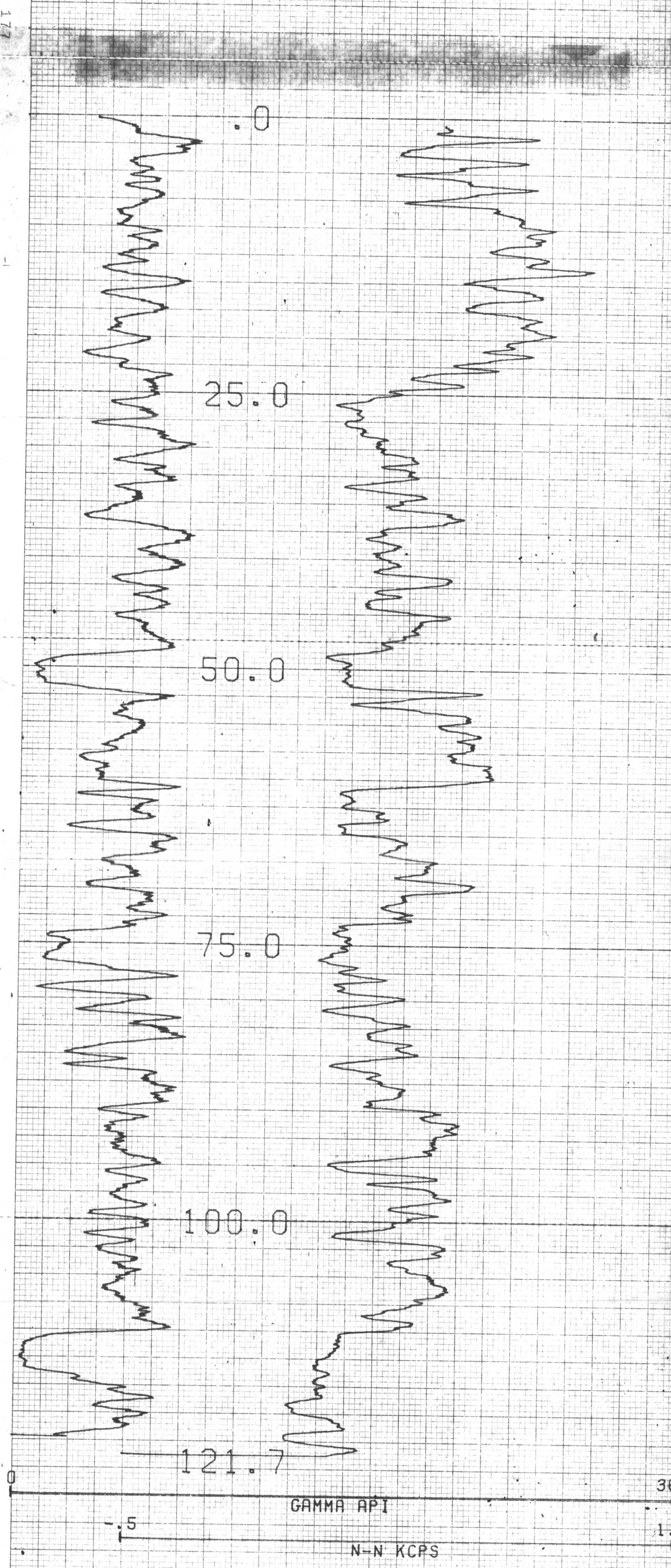
DATE	Run No. 1	Run No. 2	MUD	Run No. 1	Run No. 2
Core					
First Reading			Nature		
Last Reading			Density		
Footage Logged			Viscosity		
Bottom Depth			Resistivity		
Casing From Log			Res. to BHT		
Casing Depth			pH		
Casing Size			Circ Temp		
A" Size			BHT Temp		
B" Size					

REMARKS

COMPU-LOG V8L2 PLOT 09-19-84

R.H. 691  
FORDING COAL LTD.  
GREENHILLS

HOLE DIAMETER : 10.0  
 PROBE # 9055A - 232  
 SENSOR #4 CAL STD CPS = 152  
 SENSOR #4 CAL RUN CPS = 191  
 SENSOR #4 CAL BIAS = 0  
 DATA V8L2\*H TRUCK # 367  
 JOHN STOKMANS APPL.#7 L1



RH 691

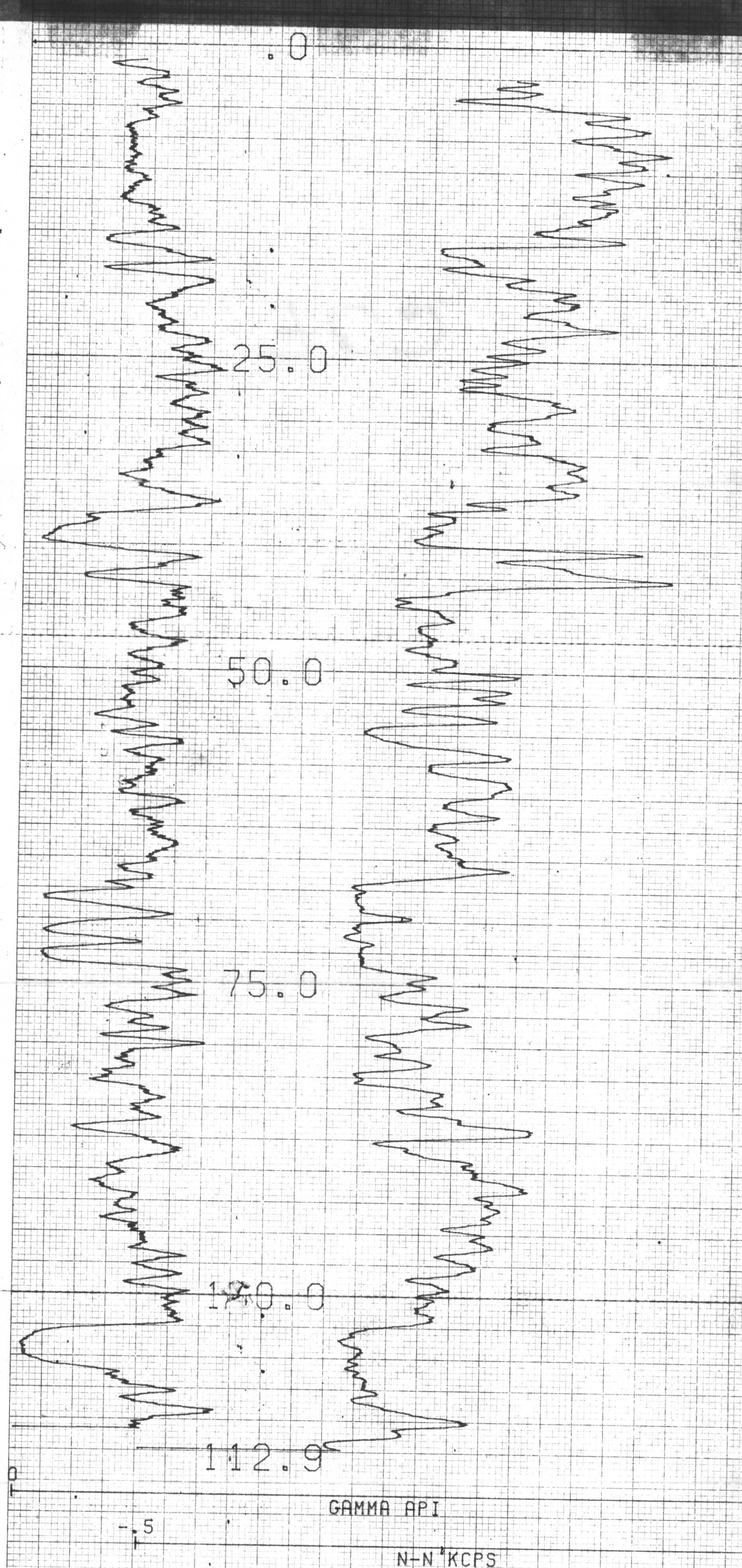


**702**

COORDINATES  
N 147 321.4  
S 21 755.0  
ELEVATION 1854.19  
DF  
FB  
GL

Date	Run No. 1	Run No. 2	MUD	Run No. 1	Run No. 2
First Reading			Nature		
Last Reading			Density		
Footage Logged			Viscosity		
Bottom (Duller)			Resistivity		
Casing (From Log)			Res. to BHT		
Casing (Cutter's)			pH		
Casing Size			Cas. Temp		
Bit Size			B.H. Temp		
			Logged by		
			Witnessed by		

REMARKS



ZDMPU-LOG V8L2 PLOT 09-18-84  
 RH-692  
 FORDING COAL LTD.  
 UPPER GREENHILLS  
 HOLE DIAMETER : 10.0  
 PROBE # 9055A - 232  
 SENSOR #4 CAL STD CPS = 152  
 SENSOR #4 CAL RUN CPS = 191  
 SENSOR #4 CAL BIAS = 0  
 DATA V8L2#A TRUCK # 867  
 DAVE D'ANDREA APPL.#7 L1

181









# WELL LOG

R.H. 918  
HNR

## 702

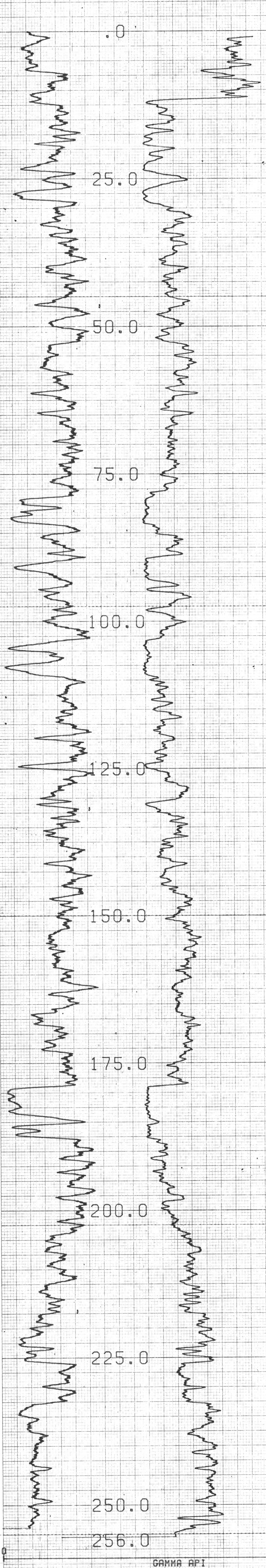
COORDINATE  
N 154 264.6  
S 25 236.6  
ELEVATION 1 735.63

Company	DATE	Run No. 1	Run No. 2
AREA	WELL	Run No. 1	Run No. 2
WELL	COUNTRY	Run No. 1	Run No. 2
DATE	Run No. 1	Run No. 2	Run No. 3
First Reading	Run No. 1	Run No. 2	Run No. 3
Last Reading	Run No. 1	Run No. 2	Run No. 3
Footage Logged	Run No. 1	Run No. 2	Run No. 3
Bottom (Depth)	Run No. 1	Run No. 2	Run No. 3
Casing From Log	Run No. 1	Run No. 2	Run No. 3
Casing (Depth)	Run No. 1	Run No. 2	Run No. 3
Casing Size	Run No. 1	Run No. 2	Run No. 3
Bt Size	Run No. 1	Run No. 2	Run No. 3
Bt Size	Run No. 1	Run No. 2	Run No. 3

COMPU-LOG V8L2 PLOT 08-19-84

R.H. 918  
FORDING COAL LTD.  
HENRETTA CREEK

HOLE DIAMETER : 09.5  
PROBE # 9055A - 232  
SENSOR #4 CAL STD CPS = 152  
SENSOR #4 CAL RUN CPS = 191  
SENSOR #4 CAL BIAS = 0  
DATA V8L2\*#A TRUCK # 367  
SHANE FORTIN APPL.#7 L1



GAMMA API  
N-N KCPS

303

301

299





# WELL LOG

RH 920  
HMR

## 702

COORDINATE  
N 153 736.9  
E 24 422.1  
ELEVATION 1 117.31

WELL NO. 702  
COUNTY STATE

Date	Run No. 1	Run No. 2	MUD	Run No. 3	Run No. 4
First Reading			Temperature		
Last Reading			Density		
Tooling Logged			Viscosity		
Bottom (Order)			Resistivity		
Casing From Log			Res to BH		
Casing (Order)			pH		
Casing Size			Circ Temp		
By Size			BH Temp		

COMPU-LOG V8L2 PLOT 08-16-84

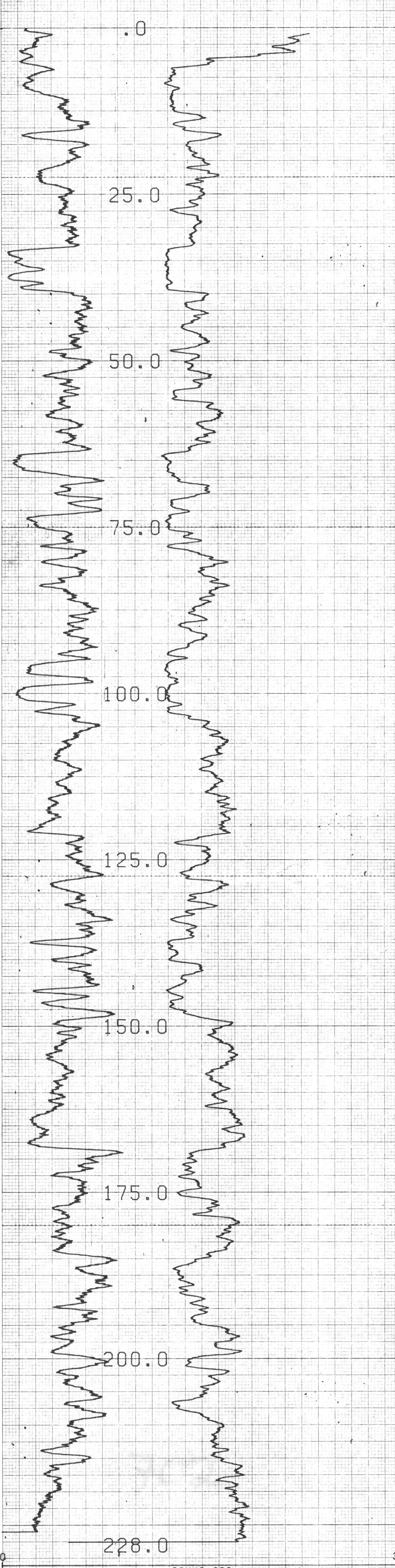
R.H. 920  
FORDING COAL LTD.  
HENRETTA CREEK

HOLE DIAMETER : 09.5  
PROBE # 9055A - 232  
SENSOR #4 CAL STD CPS = 152  
SENSOR #4 CAL RUN CPS = 191  
SENSOR #4 CAL BIAS = 0  
DATA V8L2WA TRUCK # 367  
SHANE FORTIN APPL.#7 L1

313

311

309



GAMMA API

N-N KCPS

30  
1



702

LOG NUMBER  
154 041.4  
ELEVATION  
24 130.7  
1 735.00

COMPU-LOG V8L2 PLOT 08-27-84

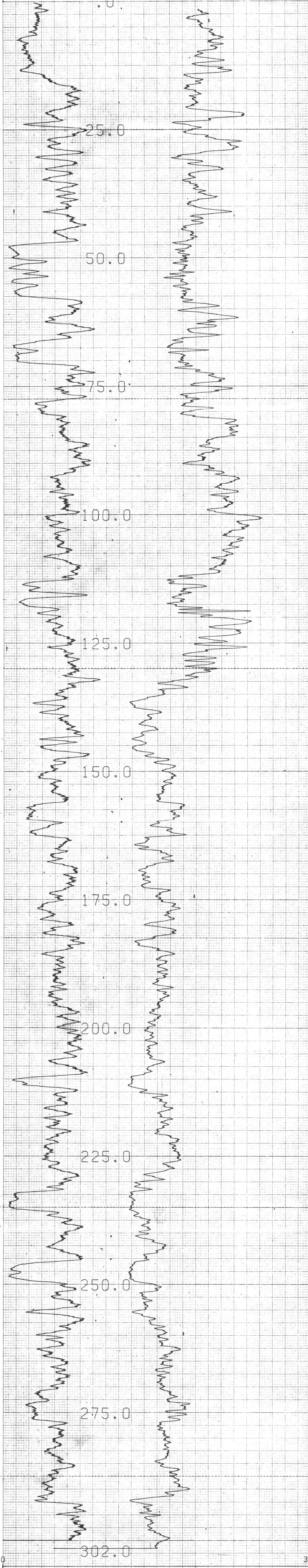
R. H. 921  
FORDING COAL LTD.  
HENRETTA CREEK

HOLE DIAMETER : 09.5  
PROBE # 9055A - 232  
SENSOR #4 CAL STD CPS = 152  
SENSOR #4 CAL RUN CPS = 191  
SENSOR #4 CAL BIAS = 0  
DATA V8L2WA TRUCK # 367  
SHANE FORTIN APPL.#7 L1

241

239

237



GAMMA API

N-N KCPS

3

1



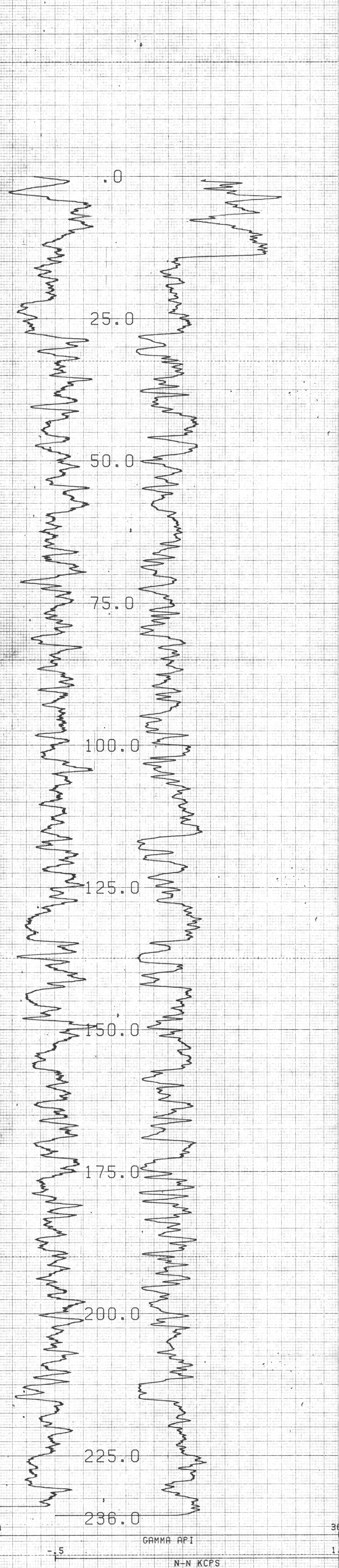
Company: \_\_\_\_\_  
Area: \_\_\_\_\_  
Well: **702**  
County: \_\_\_\_\_ State: \_\_\_\_\_

COORDINATES: N 154 116.0  
E 23 529.5  
ELEVATION: 730.59  
D.S. \_\_\_\_\_  
R.S. \_\_\_\_\_  
T.G. \_\_\_\_\_

Core	Surf	Ref No. 1	MUD	Run No. 1	Run No. 2
First Reading			Notes		
Last Reading			Density		
Footage Logged			Viscosity		
Bottom (Diller)			Reactivity		
Casing / Flow Log			Res. of BH		
Casing (Under)			pH		
Casing Size			Con. Temp		
Bit Size			BH Temp		
Bit Size 2					

COMPU-LOG V8L2 PLOT 08-13-84  
R.H. 923  
FORDING COAL LTD.

HOLE DIAMETER : 10.0  
PROBE # 9055A - 232  
SENSOR #4 CAL STD CPS = 152  
SENSOR #4 CAL RUN CPS = 191  
SENSOR #4 CAL BIAS = 0  
DATA V8L2WA TRUCK # 367  
SHANE FORTIN APPL.#7 L1



329

327

325



COMPANY  
AREA  
WELL  
COUNTY STATE

**702**

COORDINATES  
N **145 293.4**  
S **22 648.1**  
ELEVATION **1 798.82**  
D.F.  
K.B.  
O.L.

	Run No. 1	Run No. 2	MUD	Run No. 1	Run No. 2
Date			Nature		
First Reading			Density		
Last Reading			Viscosity		
Footage Logged			Resistivity		
Bottom (Driller)			Res. @ BHT		
Casing (From Log)			pH		
Casing (Driller)			Circ. Temp		
Casing Size			B.H. Temp		
Bit Size					

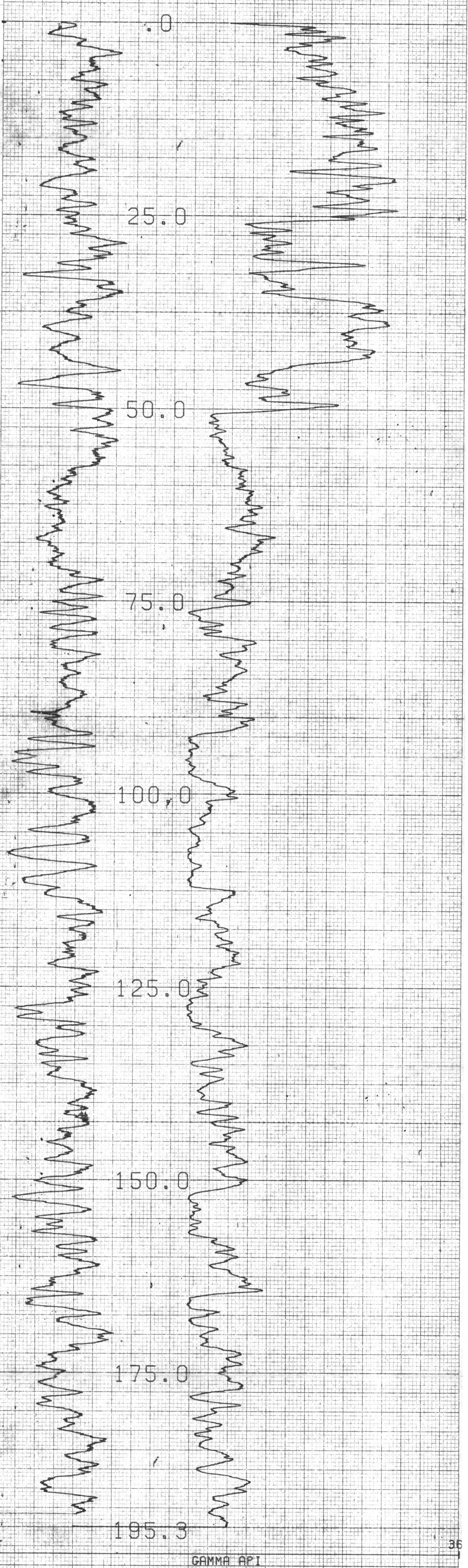
Logged by  
Witnessed by

REMARKS

COMPU-LOG V8L2 PLOT 07-17-84

**R.H. 1880**  
**FORDING COAL LTD.**  
**SOUTH GREENHILLS**

HOLE DIAMETER : 09.5  
PROBE # 9055A - 232  
SENSOR #4 CAL STD CPS = 152  
SENSOR #4 CAL RUN CPS = 191  
SENSOR #4 CAL BIAS = 0  
DATA V8L2\*#A TRUCK # 967  
GARRY LUCAS APPL.#7 L1



CENTURY GEOPHYSICAL

CENTURY GEOPHYSICAL CORP. PART NO. 786-0040

CENTURY GEOPHYSICAL CORP. PART NO. 786-0040

CENTURY GEOPHYSICAL CORP. PART NO. 786-0040



**702**

COORDINATES  
N 145 072.4  
S 22 733.8  
ELEVATION 1 796.86  
D.F.  
K.B.  
G.L.

Date	Run No.	Run No. 2	MUD	Run No. 1	Run No. 2
First Reading			Nature		
Last Reading			Density		
Surface Logger			Viscosity		
Bottom (Driller)			Resistivity		
Casing (from Log)			Res. @ BHT		
Casing (Oriller)			pH		
Casing Size			Circ. Temp		
Bit Size			GM Temp		

Logged by \_\_\_\_\_  
Witnessed by \_\_\_\_\_

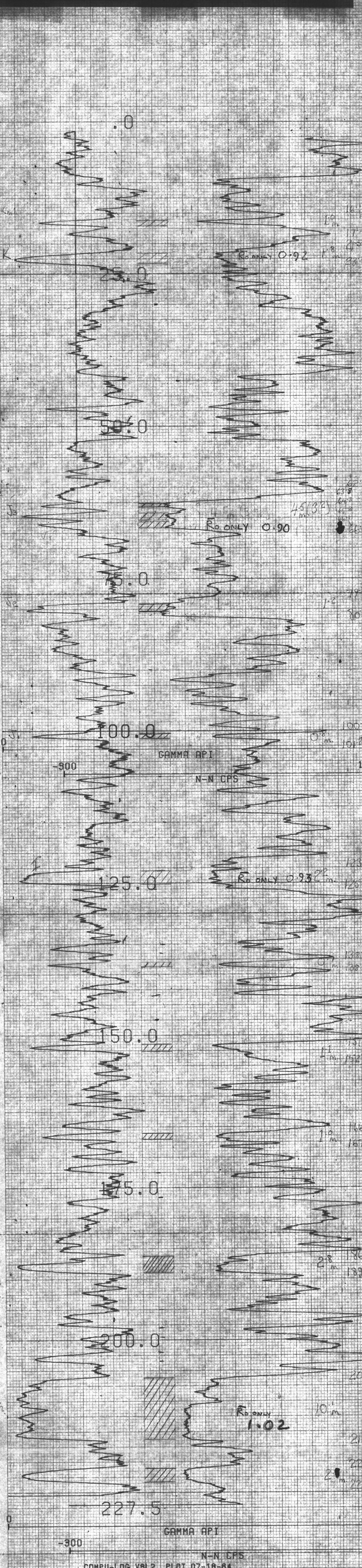
REMARKS

CENTURY GEOPHYSICAL CORP. PART NO. 786-0040

CENTURY GEOPHYSICAL CORP. PART NO. 786-0040

CENTURY GEOPHYSICAL CORP. PART NO. 786-0040

CENTURY GEOPHYSICAL CORP. PART NO. 786-0040



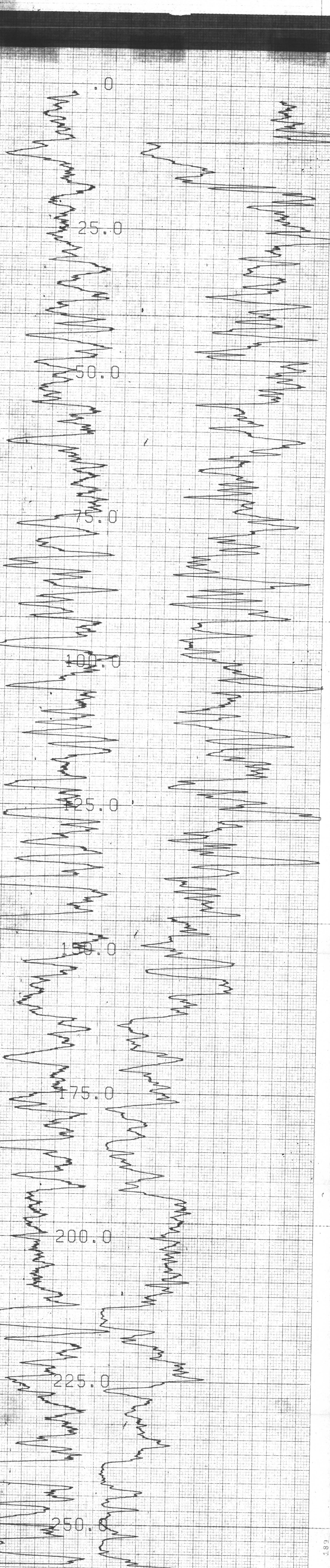
COMPU-LOG V8L2 PLOT 07-18-84  
RH-1881  
FORDING COAL LTD  
SOUTH GREENHILLS  
HOLE DIAMETER : 10.0  
PROBE # 9055A - 232  
SENSOR #4 CAL STD CPS = 152  
SENSOR #4 CAL RUN CPS = 191  
SENSOR #4 CAL BIAS = 0  
DATA V8L2\* A TRUCK # 367  
DAVE D'ANDREA APPL #7 L1



**702**

COORDINATES  
N 144 915.3  
S 22 754.1  
ELEVATION 1 768.17  
DF  
KB  
GL

DATE	Run No. 1	Run No. 2	MUD	Run No. 1	Run No. 2
Date					
First Reading			Nature		
Last Reading			Density		
Footage Logged			Viscosity		
Bottom (Driller)			Resistivity		
Casing (From Log)			Res. @ BHT		
Casing (Driller)			pH		
Casing Size			Circ. Temp.		
Bit Size			B.H. Temp.		
Bit Size			Logged by		
			Witnessed by		



COMPU-LOG V8L2 PLDT 07-15-84

RH-1882  
 FORDING COAL LTD  
 SOUTH GREENHILLS  
 HOLE DIAMETER : 10.0  
 PROBE # 9055A - 232  
 SENSOR #4 CAL STD CPS = 152  
 SENSOR #4 CAL RUN CPS = 191  
 SENSOR #4 CAL BIAS = 0  
 DATA V8L2\*RA TRUCK # 367  
 DAVE D'ANDREA APPL.#7 L1

189  
165  
30





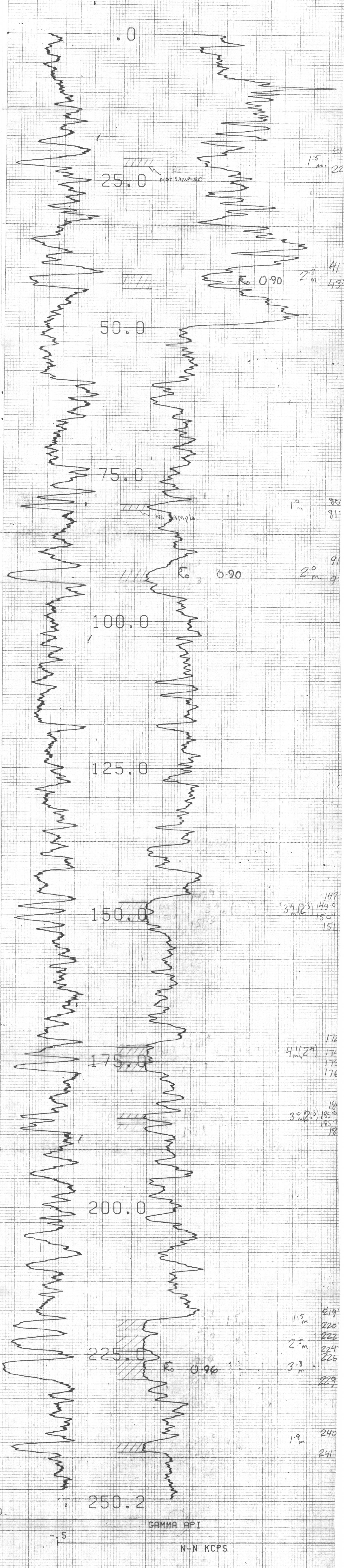


COMPANY	AREA	WELL	COUNTY	STATE	COORDINATES N 144 496.1 S 22 788.3 ELEVATION 1 787.00
		<b>702</b>			OF KB GL

CDMPU-LDG V8L2 PLOT 07-21-84

R.H. 1884  
FORDING COAL LTD.  
SOUTH GREENHILLS

HOLE DIAMETER : 09.5  
PROBE # 9055A - 232  
SENSDR #4 CAL STD CPS = 152  
SENSDR #4 CAL RUN CPS = 191  
SENSDR #4 CAL BIAS = 0  
DATA V8L2\*A TRUCK # 367  
GARRY LUCAS APPL.#7 L1



GAMMA API  
N-N KCPS



COMPANY \_\_\_\_\_  
AREA \_\_\_\_\_  
WELL \_\_\_\_\_  
COUNTY \_\_\_\_\_ STATE \_\_\_\_\_

**702**

COORDINATES  
N **144 382.2**  
S **22 845.4**  
ELEVATION **1815.46**  
DF \_\_\_\_\_  
KB \_\_\_\_\_  
GI \_\_\_\_\_

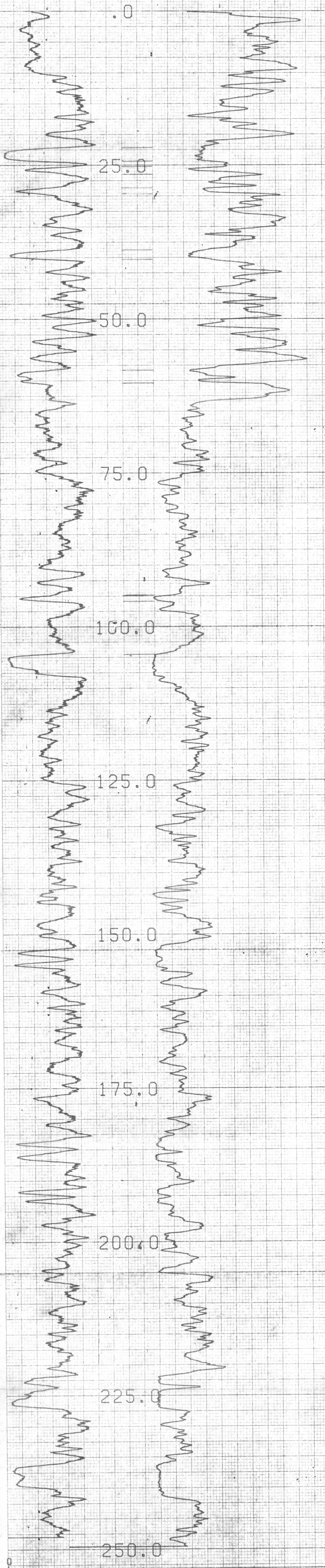
Date	Run No.	Run No. 2	MUD	Run No. 1	Run No. 2
First Reading			Nature		
Last Reading			Density		
Footage Logged			Viscosity		
Bottom (Drillbit)			Resistivity		
Coring (From Log)			Res. to BHT		
Casing (Guller)			pH		
Casing Size			Cud Temp		
Bit Size			B.M. Temp		
			Logged by		
			Witnessed by		

REMARKS \_\_\_\_\_

COMPU-LOG V8L2 PLOT 07-19-84.

R.H. 1885  
FORDING COAL LTD.  
SOUTH GREENHILLS

HOLE DIAMETER : 09.5  
PROBE # 9055A - 282  
SENSOR #4 CAL STD CPS = 152  
SENSOR #4 CAL RUN CPS = 191  
SENSOR #4 CAL BIAS = 0  
DATA V8L2#A TRUCK # 367  
GARRY LUCAS APPL.#7 L1

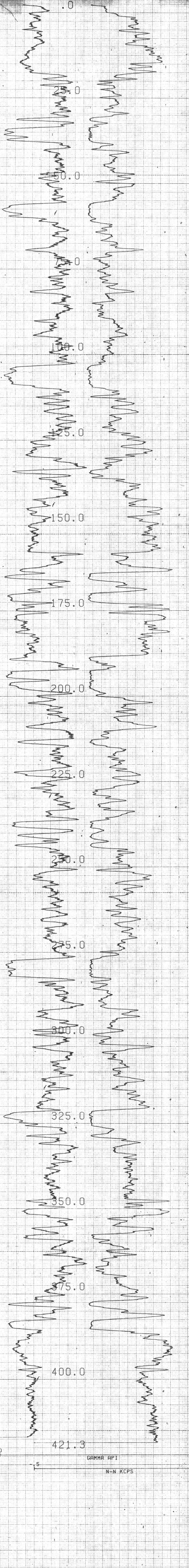




**702**

COORDINATES  
N 150 954.627  
S 26 792.023  
ELEVATION 2 063.300  
D.F.  
K.S.  
O.L.

DATE	WELL NO.	STATE	LOG NO.	MUC	Run No. 1	Run No. 2
Date				Fluor		
Tool Reading				Density		
Tool Reading				Viscosity		
Percentage Logging				Relativity		
Bottom Depth				Res. to BH		
Casing From Log				PH		
Casing Depth				Temp		
Casing Size				B.H. Temp		
Bit Size						



COMPU-LOG V8L2 PLOT 07-06-84

D.D.H. 1906  
 FORDING COAL LTD.  
 BROWNIE-EAST SPUR

HOLE DIAMETER : 09.5  
 PROBE # 9055A - 232  
 SENSOR #4 CAL STD CPS = 152  
 SENSOR #4 CAL RUN CPS = 191  
 SENSOR #4 CAL BIAS = 0  
 DATA V8L2WA TRUCK # 367  
 GARRY LUCAS APPL #7 L1

CENTURY GEOPHYSICAL CORP. PART NO. 700-0040



**702**

COORDINATES  
N 120 558.6  
S 27 263.1  
ELEVATION 2340.4

DF  
KB  
GL

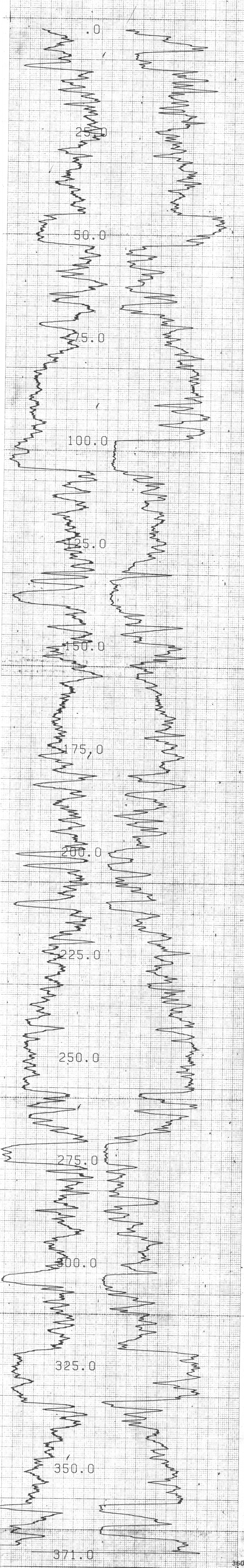
Run No.	Run No. 2	MUD	Run No. 1	Run No. 2
Depth		Moisture		
Tool Reading		Density		
Log Reading		Viscosity		
Footage Logged		Resistivity		
Bit Size		Res. vs. Bit		
Casing (Drill)		pH		
Casing (From Log)		Circ. Temp		
Casing Size		Bit Temp		
Bit Size				
Bit Size				

REMARKS

COMPU-LOG V6L2 PLOT 06-29-84

D.D.H. 1907  
FORDING COAL LTD.  
BROWNIE RIDGE

HOLE DIAMETER : 09.5  
PROBE # 9055A - 232  
SENSOR #4 CAL STD CPS = 152  
SENSOR #4 CAL RUN CPS = 191  
SENSOR #4 CAL BIAS = 0  
DATA V6L2WA TRUCK # 367  
G.L. APPL.#7 L1



63

71

GAMMA API

N+N KCPS

360

1.5

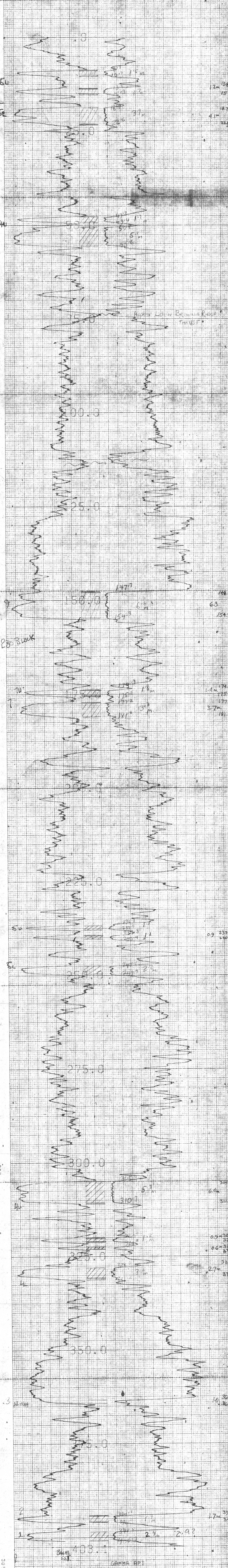


**702**

COORDINATES  
N 150 295.8  
S 27 262.3  
ELEVATION 2 317.4

COMPANY	WELL	COUNTRY	STATE	Run No. 1	Run No. 2	MUD	Run No. 1	Run No. 2

COMPUTING VARIATION PLOT 06-20-84  
 D. D.H. 1908  
 FORDING COAL LTD.  
 BROWNIE-EAST-SPUR  
 HOLE DIAMETER: 08.5  
 PROBE # 0055A - 232  
 SENSOR #4 CAL STD CPS = 152  
 SENSOR #4 CAL RUN CPS = 191  
 SENSOR #4 CAL BIAS = 0  
 DATA VBL2WA TRUCK # 567  
 JOHN STEKMAN'S APPL #7 (L)



GAMMA API  
N-N KCPS

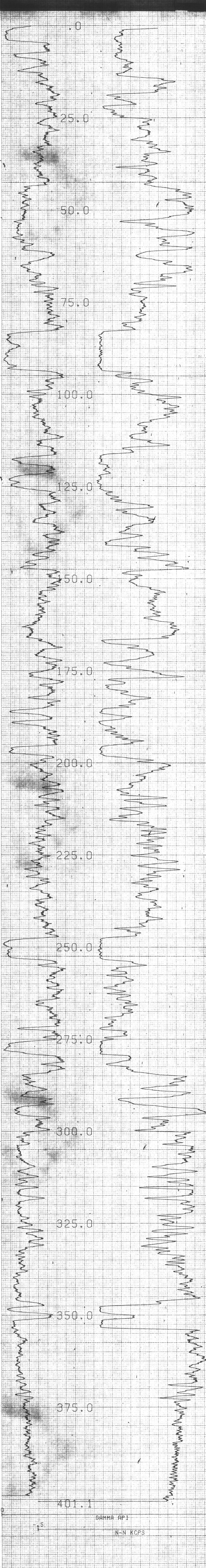


**702**

COORDINATES  
N **149 770.6**  
S **27 312.7**  
ELEVATION **2 180.66**

COMPANY \_\_\_\_\_ AREA \_\_\_\_\_ WELL \_\_\_\_\_ COUNTY \_\_\_\_\_ STATE \_\_\_\_\_

Date	Run No.	Run No. 2	MUD	Run No. 1	Run No. 2
First Reading			Name		
Last Reading			Density		
Exchange Loggers			Viscosity		
Bitman (Driller)			Resistivity		
Coding (Team Log)			Res. @ BH		
Coring (Driller)			pH		
Coring Log			Cur Temp		
Bit Size			BH Temp		
Bit Size					



COMPU-LOG V8L2 PLOT 06-05-84  
**D. D. H. 1909**  
**FORDING COAL LTD.**  
**BROWNIE-EAST SPUR**  
 HOLE DIAMETER : 09.5  
 PROBE # 9055A - 232  
 SENSOR #4 CAL STD CFS = 152  
 SENSOR #4 CAL RUN CFS = 191  
 SENSOR #4 CAL BIAS = 0  
 DATA V8L2:24 TRUCK # 967  
 JOHN STOKMANS APPL #7 L1



**702**

COORDINATES  
N 149 403.4  
S 27 318.1  
ELEVATION 2 152.73  
DF  
KB  
GL

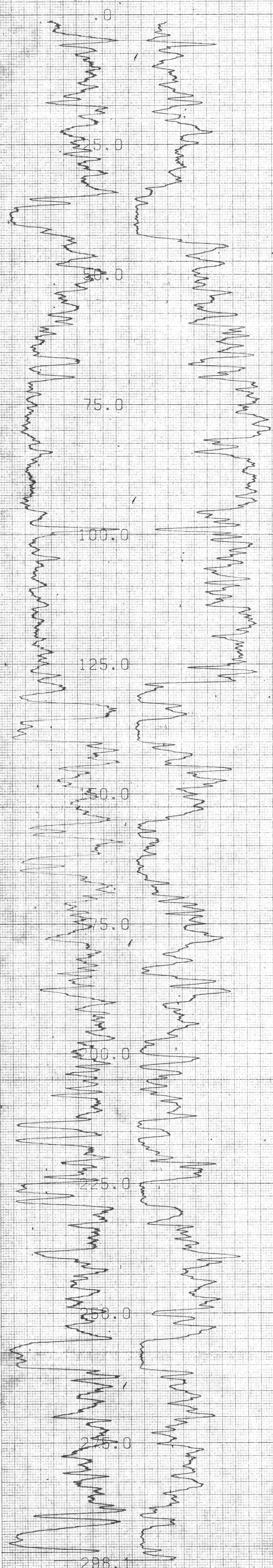
Data	Run No. 1		Run No. 2	
	Run No. 1	Run No. 2	Run No. 1	Run No. 2
First Reading				
Last Reading				
Footage Logged				
Bottom (Driller)				
Casing (From Log)				
Casing (Driller)				
Casing Size				
Bit Size				

MUD  
Nature  
Density  
Viscosity  
Reactivity  
Res. @ BHT  
pH  
Circ. Temp.  
BHT Temp.  
Logged by  
Witnessed by

REMARKS

CDMPU-LDG V8L2 PLDT 06-11-84

D.D.H. 1910  
FORDING COAL LTD.  
BROWNIE-EAST SPUR  
HOLE DIAMETER : 09.5  
PROBE # 9055A + 232  
SENSOR #4 CAL STD CPS = 152  
SENSOR #4 CAL RUN CPS = 191  
SENSOR #4 CAL BIAS = 0  
DATA V8L2WA TRUCK # 367  
JOHN STOKHANS APPL.#7 L1



407

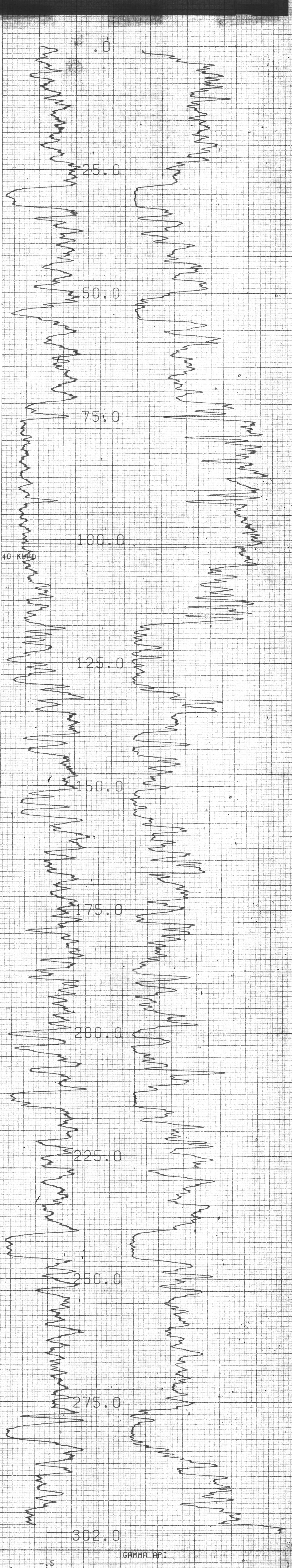


**702**

COORDINATES  
N 149 128.6  
S 27 325.8  
ELEVATION 2 114.88  
DF  
KB  
GL

Date	Run No.	Run No. 2	MUD	Run No. 1	Run No. 2
First Reading			Nature		
Last Reading			Density		
Footage Logged			Viscosity		
Bottom (Drill)			Resistivity		
Casing (From Log)			Res. @ BHT		
Casing (Drill)			pH		
Casing Size			Circ. Temp		
Bit Size			BH Temp		
			Logged by		
			Witnessed by		

REMARKS



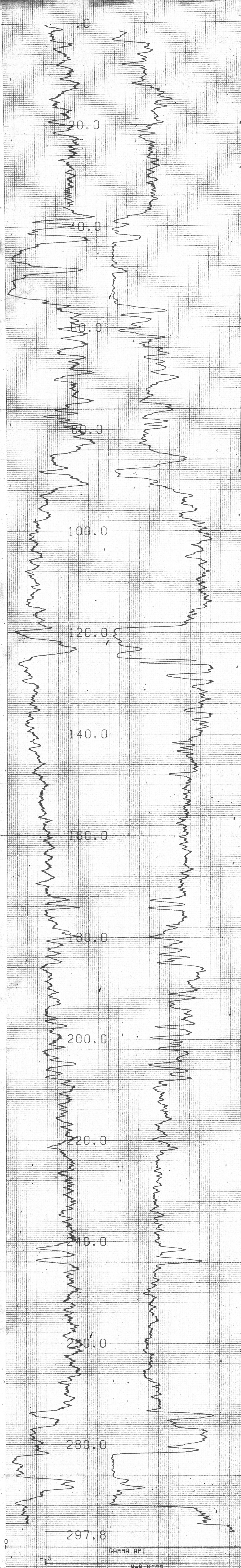
COMPU-LOG V8L2 PLOT 06-04-84  
 D.D.H. 1911  
 FORDING COAL LTD.  
 BROWNIE-EAST SPUR  
 HOLE DIAMETER 1 09.5  
 PROBE # 9055A - 232  
 SENSOR #4 CAL STD CPS = 152  
 SENSOR #4 CAL RUN CPS = 191  
 SENSOR #4 CAL BIAS = 0  
 DATA V8L2#A TRUCK # 367  
 WNN STAKMAN'S APRIL 27 '84



**702**

COORDINATES  
N 148 608.7  
E 27 102.4  
ELEVATION 1850.66

COMPANY	STATE	Run No. 1	Run No. 2	MUD	Run No. 1	Run No. 2
Date				Nature		
Last Reading				Density		
Footage Logged				Viscosity		
Run In (Driller)				Resistivity		
Casing (From Log)				Res & BHT		
Casing (Holes)				Core Temp		
Casing Size				BHT Temp		
Bit Size				Logged by		
				Witnessed by		



GAMMA API  
N-N KCPS  
COMPU-LOG VBL2 PLOT 06-08-84  
DDH-1912  
FORDING COAL LTD.  
BROWNIE-EAST SPUR  
HOLE DIAMETER : 10.0  
PROBE # 9055A - 232  
SENSOR #4 CAL STD CPS = 152  
SENSOR #4 CAL RUN CPS = 191  
SENSOR #4 CAL BIAS = 0  
DATA VBL2WA TRUCK # 50  
DAVID D'ANDREA APPL # 7



COMPANY \_\_\_\_\_  
AREA \_\_\_\_\_  
WELL **702**  
COUNTY \_\_\_\_\_ STATE \_\_\_\_\_

COORDINATES  
N 150 664.8  
S 26 647.4  
ELEVATION 2173.03  
D.F. \_\_\_\_\_  
K.B. \_\_\_\_\_  
G.L. \_\_\_\_\_

Date	Run No.	Run No. 2	MUD	Run No. 1		Run No. 2	
				1	2	1	2
First Reading			Moisture				
Last Reading			Density				
Footage Logged			Viscosity				
Bottom (Driller)			Resistivity				
Casing (Driller)			Res. (a. BHT)				
Casing (Frog)			pH				
Casing (Diller)			Circ. Temp				
Casing Size			B.H. Temp				
Bit Size							
			Logged by				
			Witnessed by				

REMARKS \_\_\_\_\_

COMPU-LOG V8L2 PLOT 08-03-84

R. H.: 1913  
FORDING COAL LTD.  
BROWNIE RIDGE

HOLE DIAMETER : 10.0  
PROBE # 9055A - 232  
SENSOR #4 CAL STD CPS = 152  
SENSOR #4 CAL RUN CPS = 191  
SENSOR #4 CAL BIAS = 0  
DATA V8L2\*A TRUCK # 367  
JOHN STOKMANS APPL.#7 L1

