

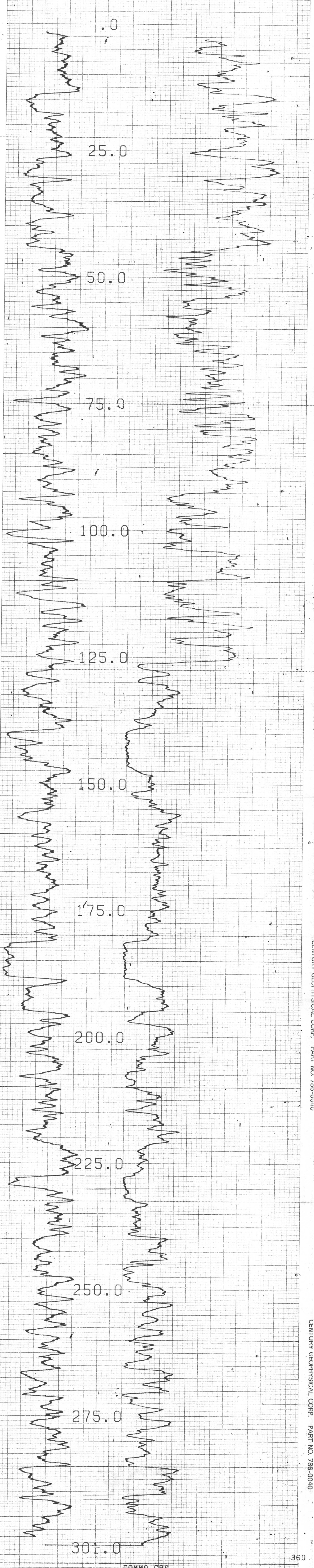
702

RH 1914

COORDINATES
N. 150 497.1
S. 26 514.7
ELEVATION: 2 237.48

DATE	Run No.	Run No. 2	MUD	Run No. 1	Run No. 2
Date			Moisture		
First Reading			Density		
Last Reading			Viscosity		
Footage Logged			Resistivity		
Bottom Depth			Res. to BHT		
Casing from Log			pH		
Casing Depth			Circ. Temp.		
Casing Size			B.H. Temp.		
Bit Size					
Log Size					
Log Size					

COMPU-LOG V8L2 PLOT 07-28-84
R.H. 1914
FORDING COAL LTD.
BROWNIE RIDGE
HOLE DIAMETER : 10.0
PROBE # 9055A - 232
SENSOR #4 CAL STD CPS = 152
SENSOR #4 CAL RUN CPS = 191
SENSOR #4 CAL BIAS = 0
DATA V8L2WA TRUCK # 367
SHANE FORTIN APPL.#7 L1



WELL NO. RH 1915
LOCATION BRK

COMPANY _____
AREA _____
WELL _____
COUNTY _____ STATE _____

702

COORDINATES
N 150 475.1
S 27 381.1
ELEVATION 2 346.76
DF _____
KB _____
OI _____

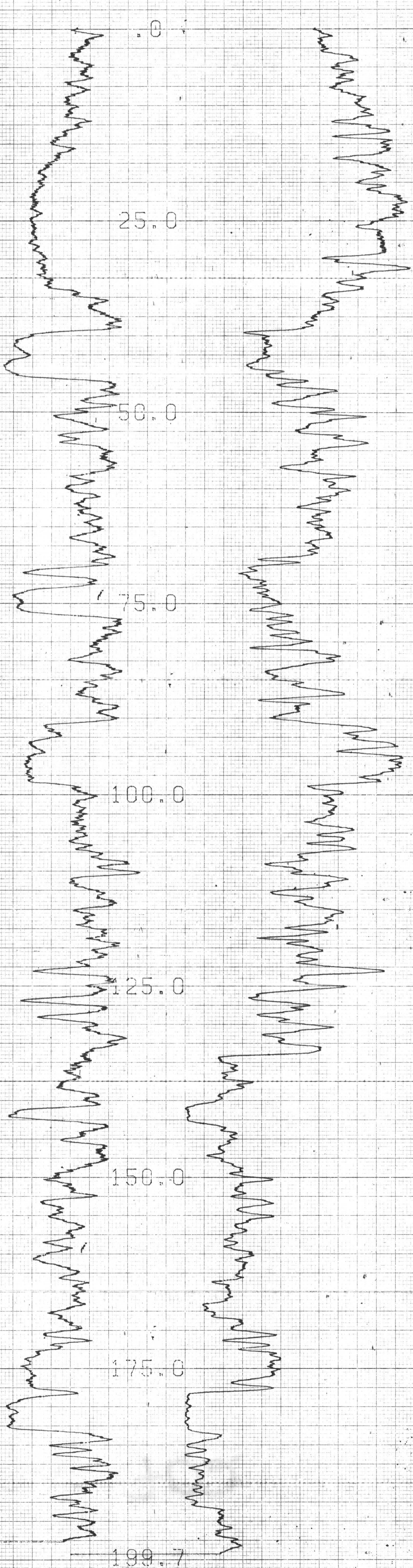
Date	Run No.	Run No. 2	MUD	Run No. 1	Run No. 2										
						Probe	Density	Viscosity	Resistivity	Res. to BHT	pH	Circ Temp	BH Temp		

Logged by _____
Witnessed by _____

COMPU-LOG V8L2 PLOT 08-06-84

R. H. 1915
FORDING COAL LTD.
BROWNIE PIT

HOLE DIAMETER : 10.0
PROBE # 9055A - 232
SENSOR #4 CAL STD CPS = 152
SENSOR #4 CAL RUN CPS = 191
SENSOR #4 CAL BIAS = 0
DATA V8L2*RA TRUCK # 367
JOHN STOKMANS APPL.#7 L1



379

377

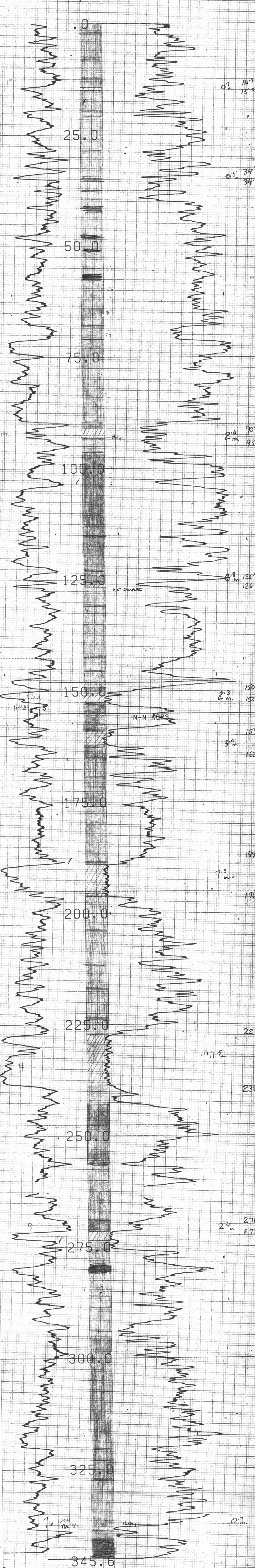
375

702

COORDINATES
N 150 119.8
E 26 529.2
ELEVATION 2 280.72

COMPANY	STATE	Run No. 1	Run No. 2	MUD	Run No. 1	Run No. 2
AREA				Nature		
WELL				Density		
COUNTRY				Viscosity		
				Relativity		
				Res. % BH		
				pH		
				Circ. Temp		
				BM Temp		
				Logged by		
				Witnessed by		

COMPU-LOG V8L2 PLOT 07-25-84
R.H. 1916
FORDING COAL LTD.
BROWNIE RIDGE
 HOLE DIAMETER : 10.0
 PROBE # 9055A - 232
 SENSOR #4 CAL STD CPS = 152
 SENSOR #4 CAL RUN CPS = 191
 SENSOR #4 CAL BIAS = 0
 DATA V8L2WA TRUCK # 367
 SHANE FORTIN APPL.# A



CENTURY GEOPHYSICAL CORP. PART NO. 786-0040

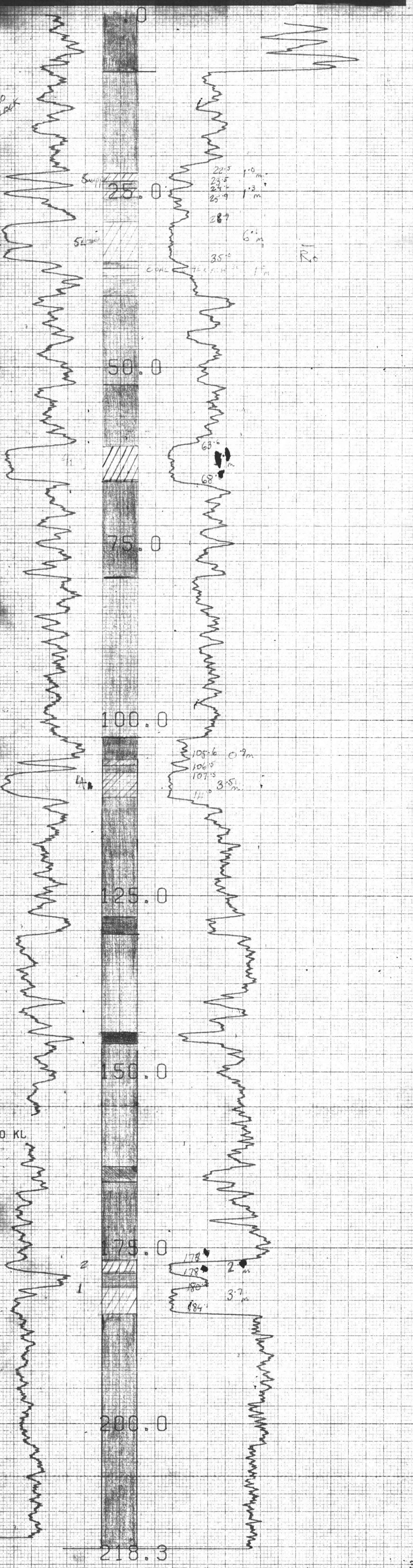
702

COORDINATES
N **149 776.2**
S **27 113.8**
ELEVATION **2 117.47**

COMPANY
AREA
WELL
COUNTY STATE

Run No. 1	Run No. 2	MUD	Run No. 1	Run No. 2
Date		Nature		
First Reading		Density		
Last Reading		Viscosity		
Footage Logged		Resistivity		
Bottom (Driller)		Res. & BHT		
Casing from Log		pH		
Casing ID (Driller)		Circ. Temp		
Casing Size		BHT Temp		
Bit Size				
Bit Size				

REMARKS



COMPU-LOG VBL2 PLOT 06-02-84

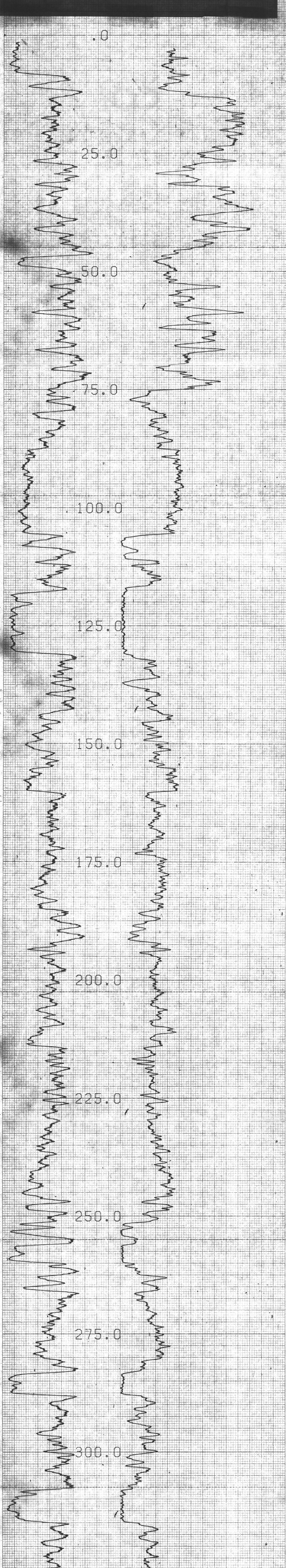
R. H. 1919
FORDING COAL LTD.
BROWNIE-EAST SPUR

HOLE DIAMETER : 10.0
PROBE # 9055A - 232
SENSOR #4 CAL STD CPS = 152
SENSOR #4 CAL RUN CPS = 191
SENSOR #4 CAL BIAS = 0
DATA VBL2#A TRUCK # 367
JOHN STOKHANS APPL. #7 L1

702

COORDINATES
N 149 555.5
S 26 782.1
ELEVATION 2059.91

DATE	Run No. 1	Run No. 2	MUD	Run No. 1	Run No. 2
Time Reading			Moisture		
Log Reading			Density		
Footage Logged			Viscosity		
Borehole (Driller)			Resistivity		
Counting (Driller)			Res. to BHT		
Logging (Driller)			pH		
Logging Size			Cur. Temp.		
Bit Size			BHT Temp.		
Bit Size			logged by		
			Witnessed by		



GAMMA API

N-N KCPS

COMPU-LOG V8L2 PLOT 09-02-84

RH-1920
FORDING COAL LTD.
EAGLE MTN

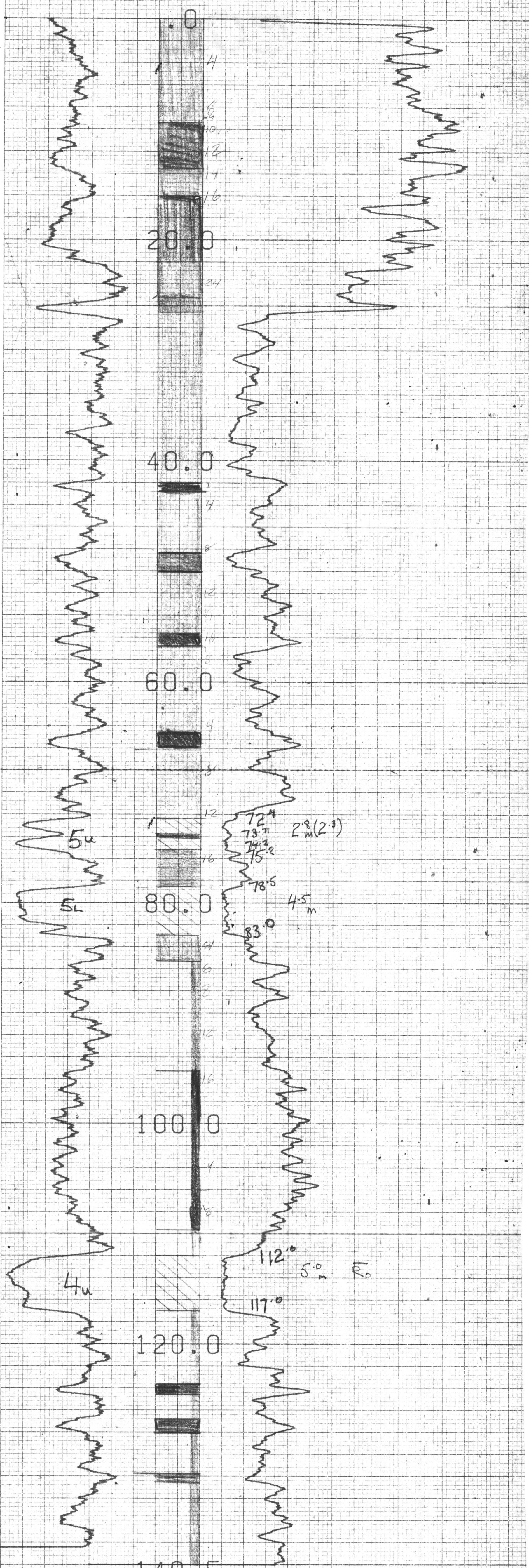
HOLE DIAMETER 10.0
PROBE # 9055A - 232
SENSOR #4 CAL STD CPS = 152
SENSOR #4 CAL RUN CPS = 191
SENSOR #4 CAL BIAS = 0
DATA V8L2WA TRUCK # 367
DAVE D'ANDREA APPL.#7 LI

COMPANY: _____
AREA: _____
WELL: **702**
COUNTRY: _____ STATE: _____

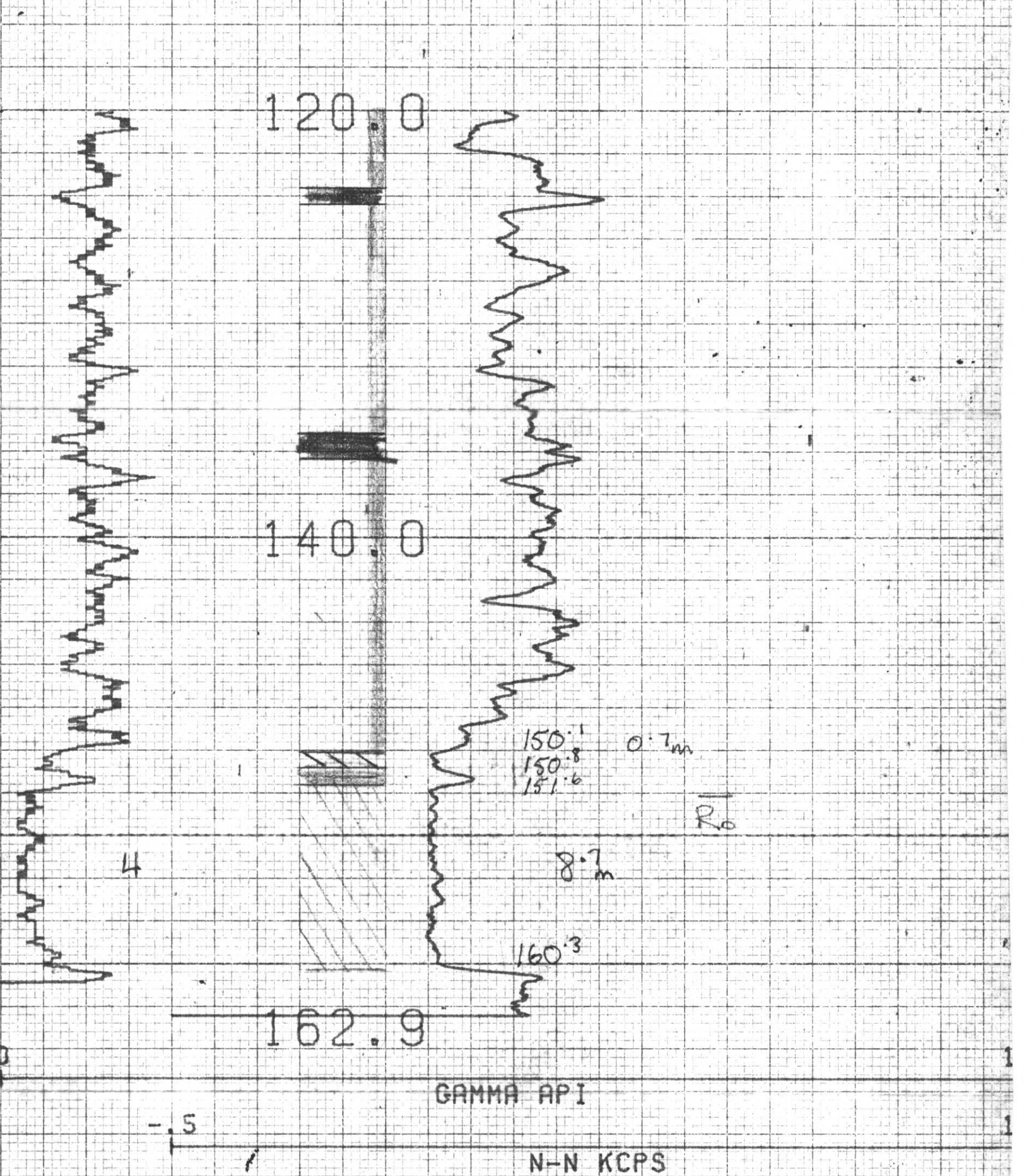
COORDINATES
N: 149 403.4
S: 27 025.6
ELEVATION: 2 072.69
D.F.: _____
K.B.: _____
G.L.: _____

Date	Run No. 1	Run No. 2	MUD*	Run No. 1	Run No. 2
First Reading			Moisture		
Last Reading			Density		
Footage Logged			Viscosity		
Barrow (Driller)			Resistivity		
Casing (From Log)			R _s @ BHT		
Casing (Driller)			PH		
Casing Size			Circ. Temp.		
Bit size			B.M. Temp.		
Bit Size					

REMARKS: _____
Logged by: _____
Witnessed by: _____



GAMMA API
N-N KCPS



GAMMA API
N-N KCPS

COMPU-LOG V8L2 PLOT 06-05-84

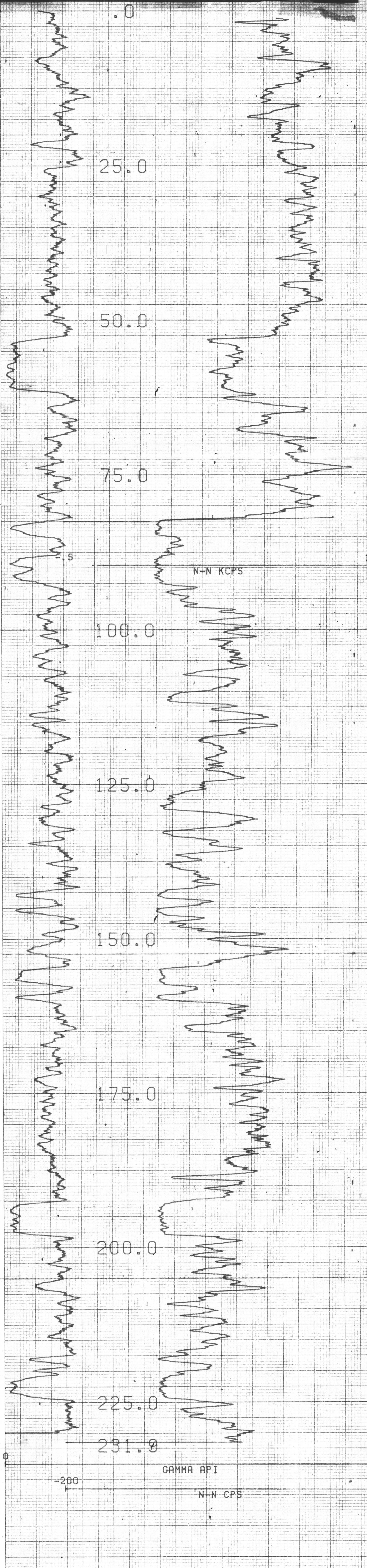
R.H. 1921
FORDING COAL LTD.
BROWNIE-EAST SPUR
HOLE DIAMETER: 10.0
PROBE # 9055A - 232
SENSOR #4 CAL STD CPS = 152
SENSOR #4 CAL RUN CPS = 191
SENSOR #4 CAL BIAS = 0
DATA V8L2WA TRUCK # 367
JOHN STOKMANS APPL. #2007L1

702

COORDINATES
N 149 423.3
S 27 459.9
ELEVATION 2 200.52
DF:
KB:
GL:

Run No. 1	Run No. 2	MUD	Run No. 1	Run No. 2
Date		Nature		
First Reading		Density		
Last Reading		Viscosity		
Footage Logged		Resistivity		
Borehole Drilled		Res. to BHT		
Casing From Log		pH		
Casing Depth		Circ. Temp		
Casing Size		BHT Temp		
Bit Size				
Bit Size				

REMARKS



COMPU-LOG VBL2 PLOT 05-31-84

R.H. 1922
 FORDING COAL LTD.
 BROWNIE-EAST SPUR

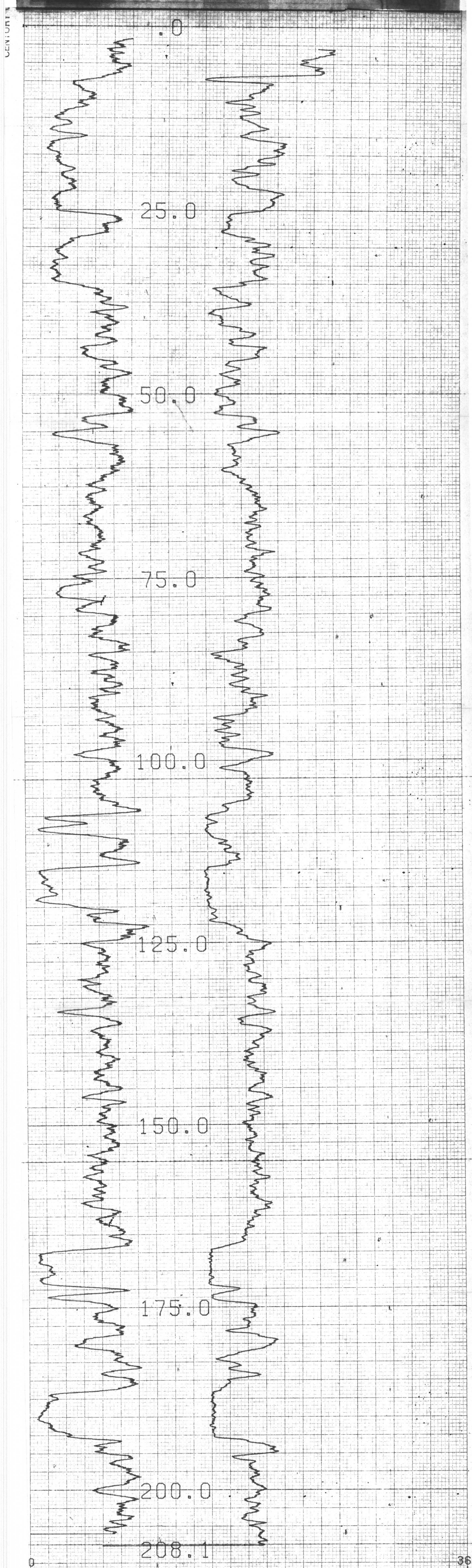
HOLE DIAMETER = 10.0
 PROBE # 9055A - 232
 SENSOR #4 CAL STD CPS = 152
 SENSOR #4 CAL RUN CPS = 191
 SENSOR #4 CAL BIAS = 0
 DATA VBL2*RA TRUCK # 367
 JOHN STOKMANS APPL. #2007L1

COMPANY: **702**

COORDINATES
N: 149 189.7
S: 26 905.8
ELEVATION: 1934.55

Run No.	Run No. 2	MUD	Run No. 1	Run No. 2
Date		Nature		
First Reading		Density		
Last Reading		Viscosity		
Footage Logged		Resistivity		
Probe / Dipper		Res. to BHT		
Casing / From log		pH		
Casing / Depth		Circ. Temp		
Casing Size		BHT Temp		
B" Size				
By Size				

REMARKS



COMPU-LOG V8L2 PLOT 06-20-84
N-N KCPS
RH-1923
FORDING COAL LTD.
BROWNIE-EAST SPUR
HOLE DIAMETER : 10.0
PROBE # 9055A - 232
SENSOR #4 CAL STD CPS = 152
SENSOR #4 CAL RUN CPS = 191
SENSOR #4 CAL BIAS = 0
DATA V8L2*8A TRUCK # 367
DAVID D'ANDREA APPL.#7 LI

702

COORDINATES
N 149 063.2
S 26 885.5
ELEVATION 1906.90

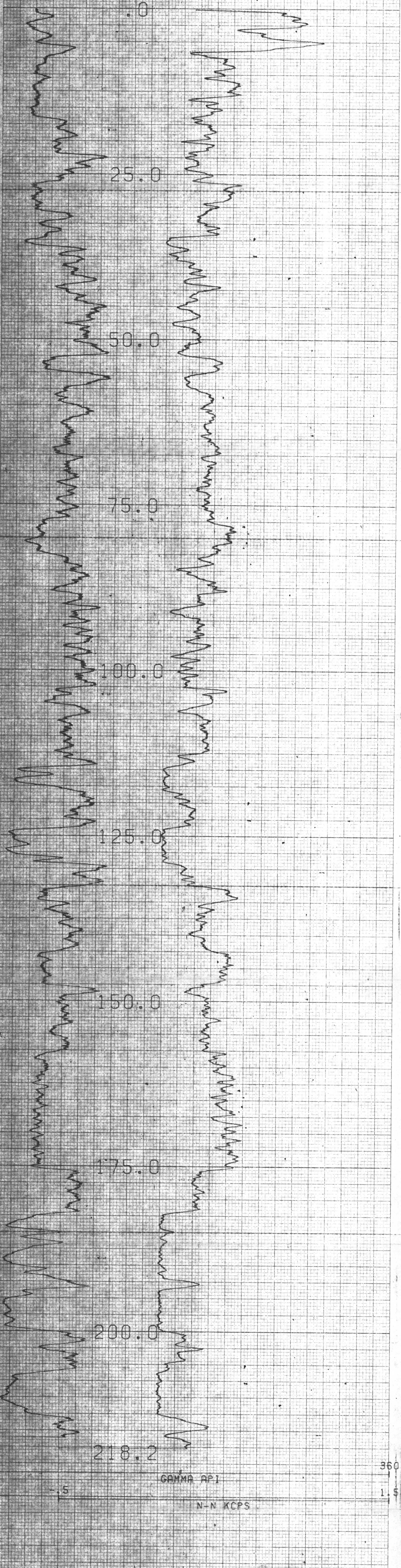
DATE	TIME	Run No. 1	MUD	Run No. 1	Run No. 2
Date	Time	Run No. 1	MUD	Run No. 1	Run No. 2
First Reading			Moisture		
Last Reading			Density		
Footage Logged			Viscosity		
Bottom (Driller)			Resistivity		
Casing (Driller)			Res. @ 8ft		
Casing (From Log)			pH		
Casing (Driller)			Circ. Temp.		
Casing Size			BM Temp.		
Bit Size					
Bit Size					

REMARKS

COMPU-LOG V8L2 PLOT 06-14-84

R.H. 1924
FORDING COAL LTD.
BROWNIE-EAST SPUR

HOLE DIAMETER : 10.0
PROBE # 9055A - 232
SENSOR #1 CAL STD CPS = 152
SENSOR #1 CAL RUN CPS = 191
SENSOR #1 CAL BIAS = 0
DATA V8L2WA TRUCK # 367
S.L. APPL.#7 L1



702

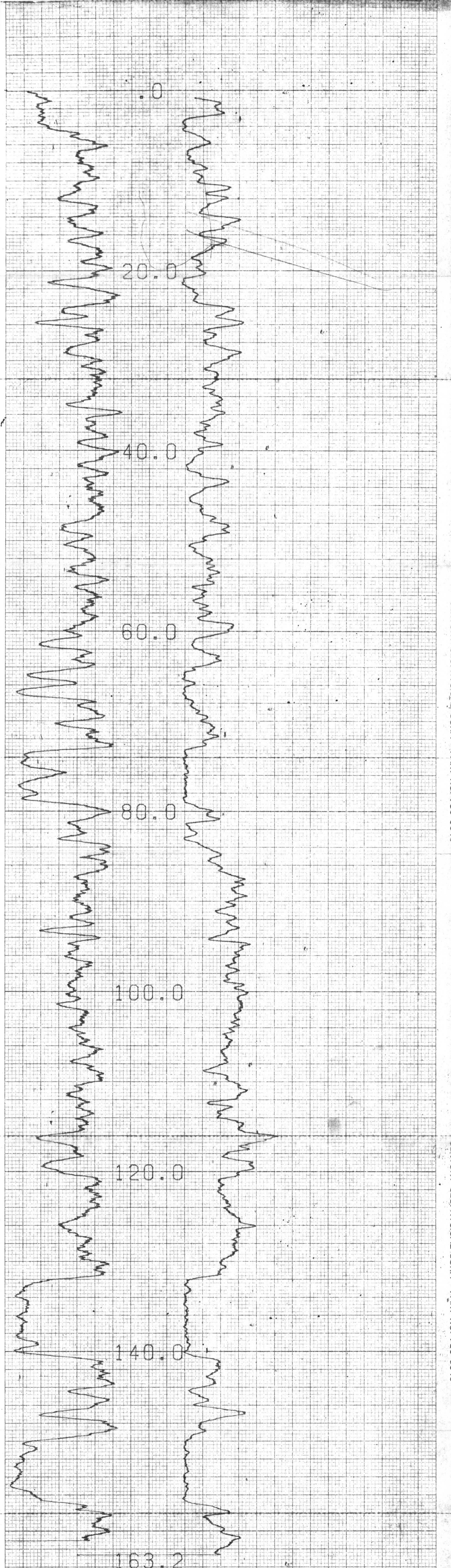
COORDINATES
N 149 055.2
S 27 051.8
ELEVATION: 1991.82
D.F.
K.B.
O.L.

COMPANY
AREA
WELL
COUNTRY STATE

	Run No.	Run No. 2	MUD	Run No. 1	Run No. 2
Date			Moisture		
First Reading			Density		
Last Reading			Viscosity		
Footage Logged			Resistivity		
Bottom (Driller)			Sp. G. BHT		
Casing (Finger)			pH		
Casing (Duff)			Circ Temp		
Casing Size			B.H. Temp		
Bit Size					
Bit Size 1					

logged by
Witnessed by

REMARKS



GAMMA API
N-N KCPS

COMPU-LOG V8L2 PLOT 06-09-84

RH-1925
FORDING COAL LTD.

BROWNIE-EAST SPUR

HOLE DIAMETER = 10.0
PROBE # 9055A - 232
SENSOR #4 CAL STD CPS = 152
SENSOR #4 CAL RUN CPS = 191
SENSOR #4 CAL BIAS = 0
DATA V8L2*RA TRUCK # 867
D. BOMBACK APPL #7 L1

R.H. 1926

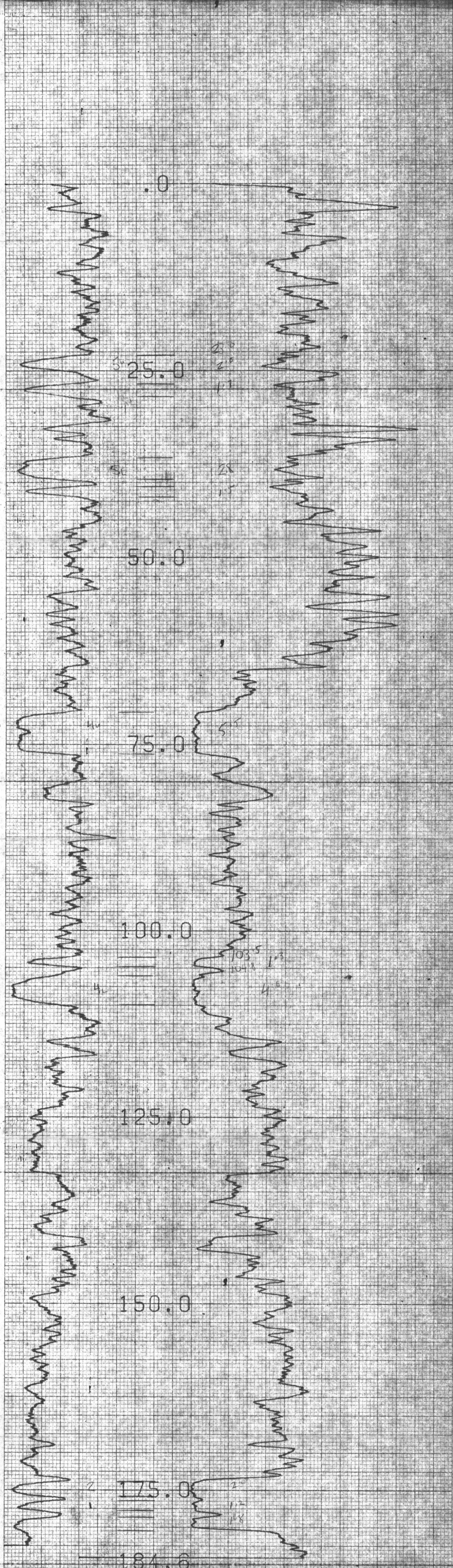
COMPANY _____
 AREA _____
 WELL **702**
 COUNTY _____ STATE _____

COORDINATES
 N 149 028.7
 S 27 491.1
 ELEVATION 2084.76
 D.F. _____
 K.S. _____
 G.L. _____

Run No.	Run No. 2	MUD	Run No. 1	Run No. 2
Date		Native		
First Reading		Density		
Log Reading		Viscosity		
Footage Logged		Resistivity		
Bit Size (Driller)		Res. @ BHT		
Casing (From Log)		pH		
Casing (Driller)		Circ. Temp.		
Casing Size		B.H. Temp.		
Bit Size				

Logged by _____
 Witnessed by _____

REMARKS _____



COMPU-LOG V8L2 PLOT 06-04-84

R.H. 1926
 FORDING COAL LTD.
 BROWNIE-EAST SPUR

HOLE DIAMETER = 10.0
 PROBE # 9055A - 292
 SENSOR #4 CAL STD CPS = 152
 SENSOR #4 CAL RUN CPS = 191
 SENSOR #4 CAL BIAS = 0
 DATA V8L2#R TRUCK # 367
 JOHN STOKMANS APPL.#7 L1

WELL NO. RH 1927
LOCATION B&K

COORDINATES
N 148 904.2
S 27 099.5
ELEVATION: 1 977.98
DF
XB
GL

702

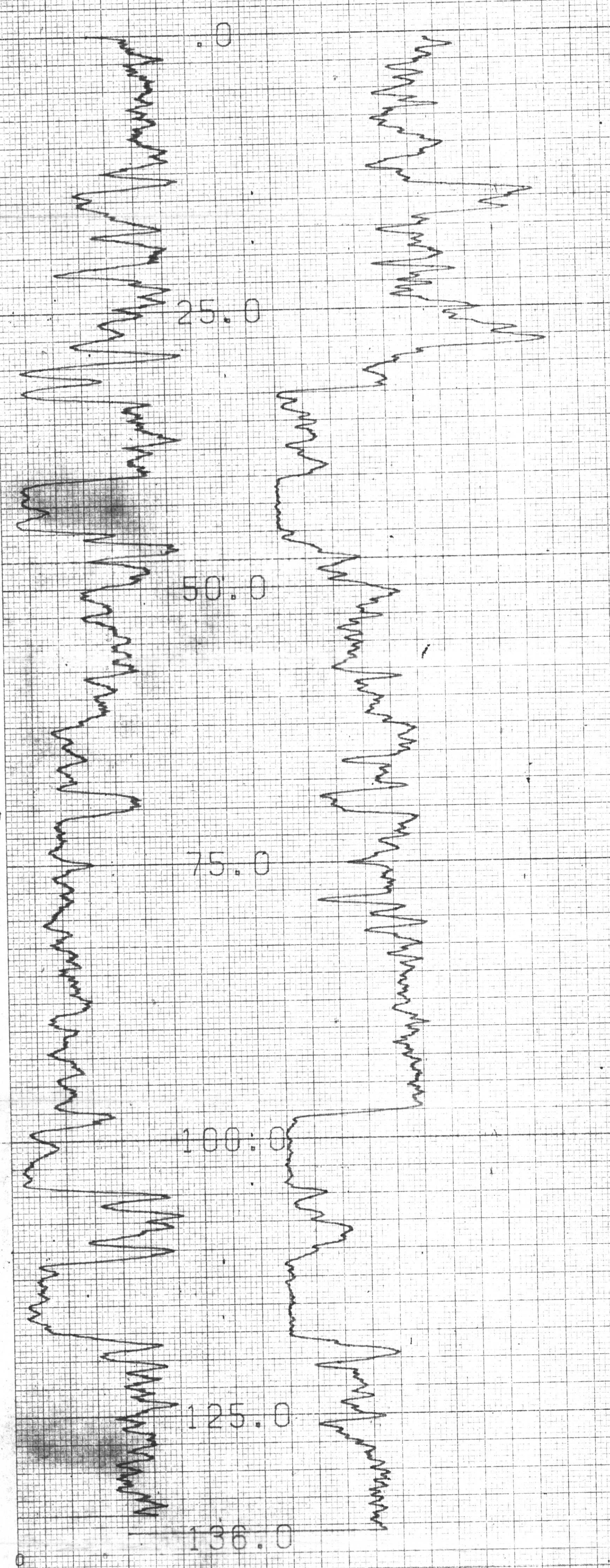
COMPANY	AREA	WELL	COUNTY	STATE	Run No. 1	Run No. 2	MUD	Run No.	Run No. 2

REMARKS

COMPU-LOG V8L2 PLOT 06-11-84

R. H. 1927
FORDING COAL LTD.
BROWNIE-EAST SPUR

HOLE DIAMETER: 10.0
PROBE # 9056A - 232
SENSOR #4 CAL STD CPS = 152
SENSOR #4 CAL RUN CPS = 191
SENSOR #4 CAL BIAS = 0
DATA V8L2#A TRUCK # 367
JOHN STOKMANS APPL #7 LI



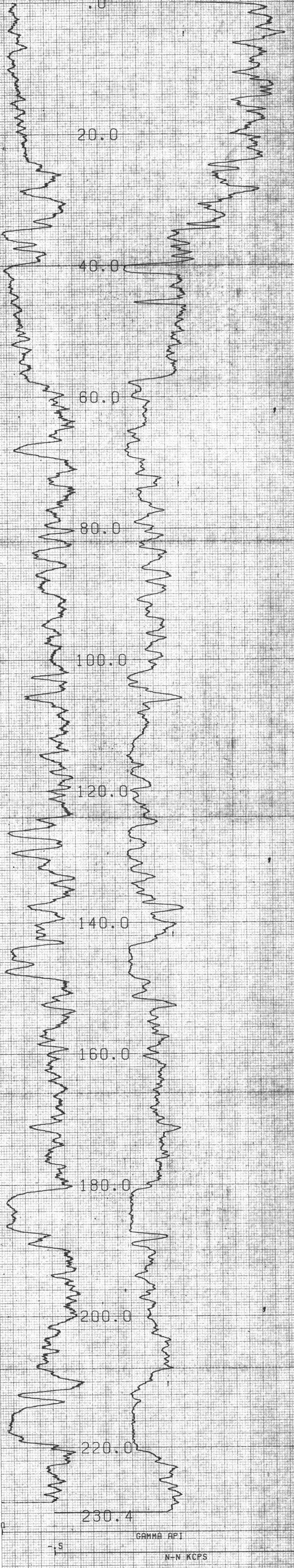
GAMMA API
N-N KCPS

599

702

COORDINATES
N 148.903.8
E 27351.7
ELEVATION 2041.58

COMPANY	Run No.	Run No. 2	MUD	Run No.	Run No. 2
AREA			Density		
WELL			Viscosity		
COUNTRY			Resistivity		
			Res. to BH		
			pH		
			Circ. Temp		
			B.H. Temp		
			Logged by		
			Witnessed by		
REMARKS					



COMPU-LOG V8L2 PLOT 06-08-84
 RH-1928
 FORDING COAL LTD.
 BROWNIE-EAST SPUR
 HOLE DIAMETER = 10.0
 PROBE # 9055A - 232
 SENSOR #4 CAL STD CPS = 152
 SENSOR #4 CAL RUN CPS = 191
 SENSOR #4 CAL BIAS = 0
 DATA V8L2*RA TRUCK # 367
 DAVID D'ANDREA APPL.#7 L1

COMPANY: _____

AREA: _____

WELL: **702**

COORDINATES: N 148 887.6
E 26 884.3
ELEVATION: 1872.58

DATE: _____

Run No. 1: _____

Run No. 2: _____

MUD: _____

Moisture: _____

Density: _____

Viscosity: _____

Resistivity: _____

Res. @ BHT: _____

PH: _____

Circ Temp: _____

BHT Temp: _____

Logged by: _____

Witnessed by: _____

REMARKS: _____

COMPU-LOG V8L2 PLOT 07-07-84

R.H. 1929

FORDING COAL LTD.

BROWNIE-EAST SPUR

HOLE DIAMETER : 10.0

PROBE # 9055A - 232

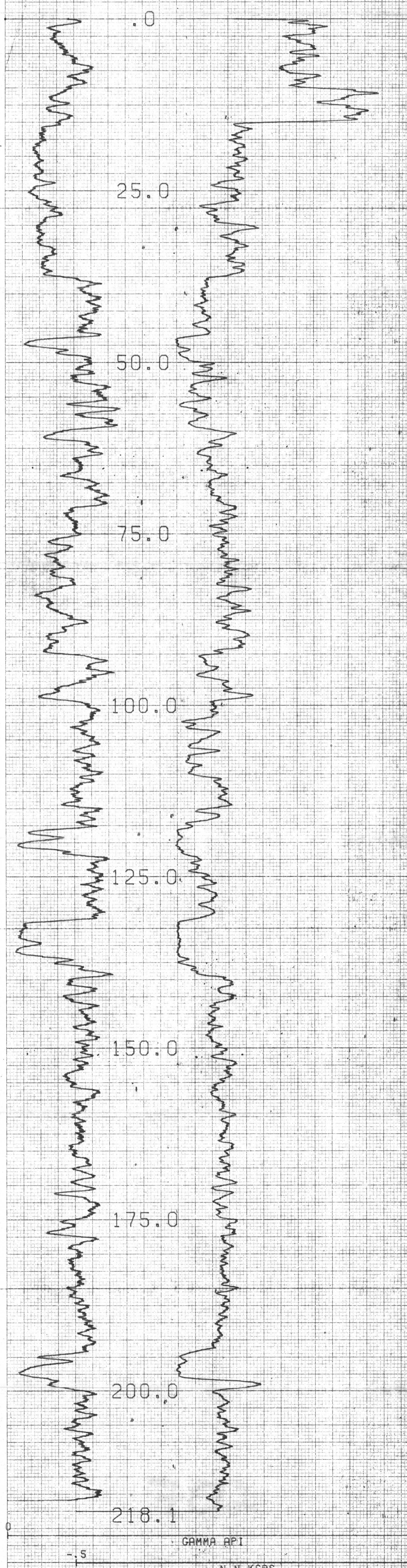
SENSOR #4 CAL STD CPS = 152

SENSOR #4 CAL RUN CPS = 191

SENSOR #4 CAL BIAS = 0

DATA V8L2#A TRUCK # 367

JOHN STOKMANS APPL.#7 LJ



702

COORDINATES
N 148 805.4
S 27 22.4
ELEVATION 1961.49

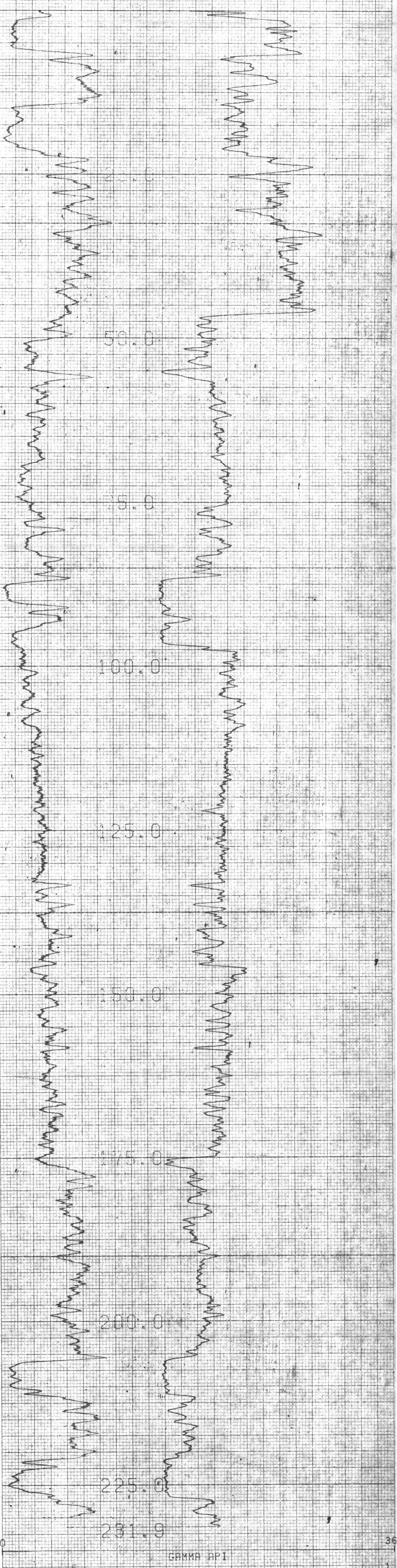
COMPANY _____
WELL _____
VEI _____
COUNTY _____ STATE _____

	Run No.	Run No. 2	MUD	Run No. 1	Run No. 3
Date			Nature		
First Reading			Density		
Last Reading			Viscosity		
Footage Logged			Res. @ BHF		
Bottom (Driller)			pH		
Casing from Log			Circ Temp		
Casing Depth			B.M. Temp		
Casing Size					
Bit Size					
			Logged by		
			Witnessed by		

COMPU-LOG V8L2 PLOT 06-16-84

R.H: 1930
FORDING COAL LTD.
BROWNE-EAST SPUR

HOLE DIAMETER : 10.0
PROBE # 9055A - 232
SENSOR #4 CAL STD CPS = 152
SENSOR #4 CAL RUN CPS = 191
SENSOR #4 CAL BIAS = 0
DATA V8L2WA TRUCK # 367
G.L. APPL.#7 LI

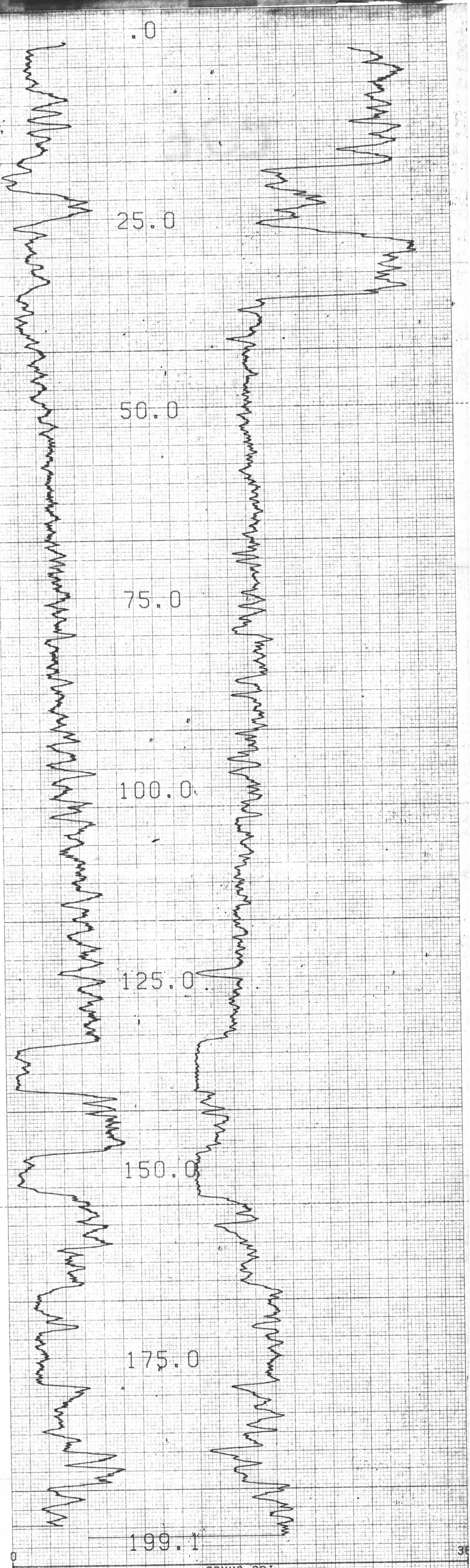


702

COORDINATES
N 148 613.6
S 27 258.7
ELEVATION: 1890.68

COMPANY	STATE	Run No. 1	Run No. 2	MUD	Run No. 1	Run No. 2
DATE				Moisture		
First Reading				Density		
Last Reading				Viscosity		
Footage Logged				Resistivity		
Surge (Driller)				Res. @ BHT		
Casing (From Log)				pH		
Casing (Driller)				Circ. Temp.		
Casing Size				B.H. Temp.		
Bit Size				logged by		
Bit Size				Witnessed by		

REMARKS



GAMMA API
N-N KCPS

COMPU-LOG V8L2 PLOT 06-22-84

RH-1931
FORDING COAL LTD.
BROWNIE EAST SPUR

HOLE DIAMETER : 12.7
PROBE # 9055A - 232
SENSOR #4 CAL STD CPS = 152
SENSOR #4 CAL RUN CPS = 191
SENSOR #4 CAL BIAS = 0
DATA V8L2WA TRUCK # 367
DAVID D'ANDREA APPL.#7 LI

702

COORDINATES
N 151 293.8
S 25 64.1
ELEVATION: 1930.79

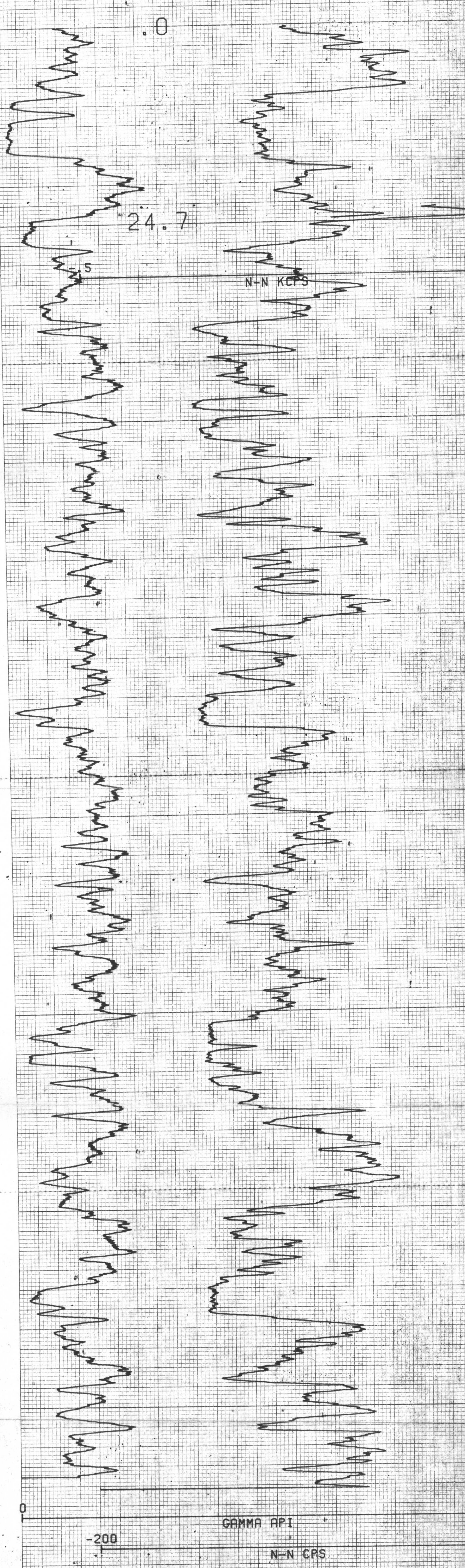
COMPANY _____
AREA _____
WELL _____
COUNTY _____ STATE _____

Date	Run No. 1	Run No. 2	MUD	Run No. 3	Run No. 4
First Reading			Fluore		
Last Reading			Density		
Footage Logged			Viscosity		
Bottom (Driller)			Resistivity		
Casing (From Log)			Res. @ BHT		
Casing (Driller)			pH		
Casing Size			Circ. Temp.		
Bit Size			Batt. Temp.		
Bit Size			logged by		
			Witnessed by		

CDMPU-LOG V8L2 PLOT 08-04-84

R. H. 1932
FORDING COAL LTD.
TURNBULL MTN.

HOLE DIAMETER = 10.0
PROBE # 9059A - 232
SENSOR #4 CAL STD CPS = 152
SENSOR #4 CAL RUN CPS = 191
SENSOR #4 CAL BIAS = 0
DATA V8L2#A TRUCK # 367
JOHN STOKMANS APPL. #7 L1



702

COORDINATES
N 149 470.9
S 25 199.7
ELEVATION 2 263.78

COMPANY _____
WELL _____
COUNTY _____ STATE _____

Run No.	Run No. 2	MUD	Run No. 1	Run No. 2
Date		Nature		
First Reading		Density		
Last Reading		Viscosity		
Footage Logged		Rel. to BHT		
Source (Driller)		pH		
Casing (From Log)		Circ. Temp.		
Casing (Driller)		B.M. Temp.		
Casing Size				
Bit Size				
Bit Size				

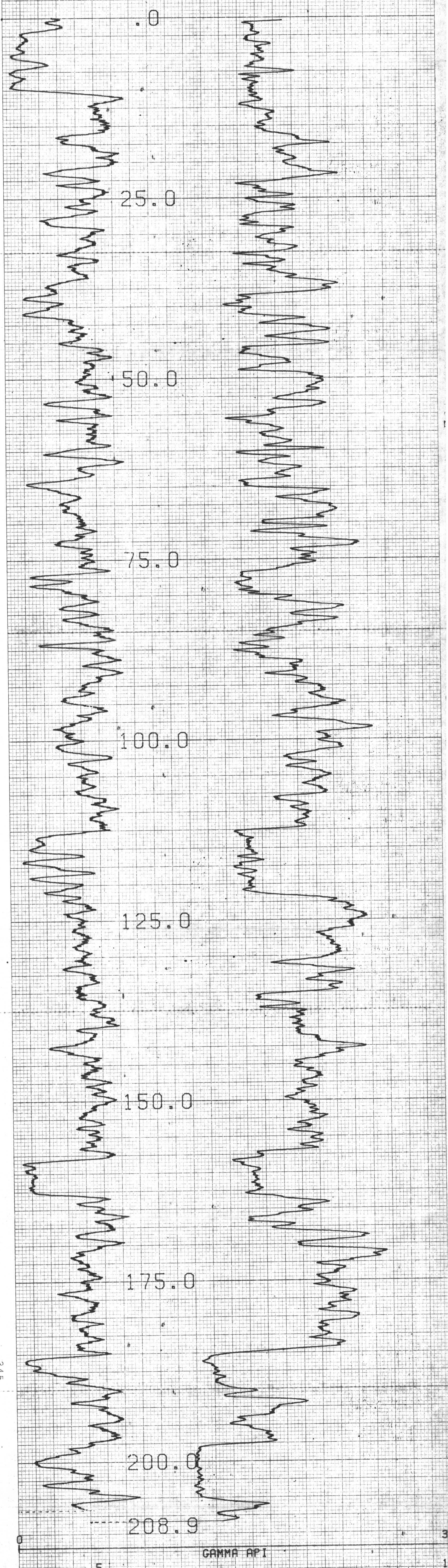
logged by _____
Witnessed by _____

REMARKS _____

COMPU-LOG V8L2 PLOT 08-10-84

R.H. 1933
FORDING COAL LTD.
EAGLE MOUNTAIN

HOLE DIAMETER : 08.5
PROBE # 9055A - 232
SENSOR #4 CAL STD CPS = 152
SENSOR #4 CAL RUN CPS = 191
SENSOR #4 CAL BIAS = 0
DATA V8L2#1 TRUCK # 367
GARRY LUCAS APPL.#7 L1



347

345

GAMMA API
N-N KCPS

702

COORDINATES
N 150 195.1
S 25 768.6
ELEVATION 2 196.96

COMPANY _____
AREA _____
WELL _____
COUNTY _____ STATE _____

	Run No. 1	Run No. 2	Run No. 3	Run No. 4
Date				
First Reading				
Last Reading				
Footage Logged				
Bottom (Driller)				
Counting from Log				
Counting (Driller)				
Counting Size				
Bit Size				
MUD				
Moisture				
Density				
Viscosity				
Resistivity				
Rel. to BHT				
pH				
Circ. Temp				
B.H. Temp				
Logged by				
Witnessed by				

REMARKS _____

COMPU-LOG V8L2 PLOT 08-08-84

R.H. 1934
FORDING COAL LTD.
EAGLE MOUNTAIN

HOLE DIAMETER : 10.0
PROBE # 9055A - 232
SENSOR #4 CAL STD CPS = 152
SENSOR #4 CAL RUN CPS = 191
SENSOR #4 CAL BIAS = 0
DATA V8L2WA TRUCK # 367
S. FORTIN APPL.#7 L1

367

Hu

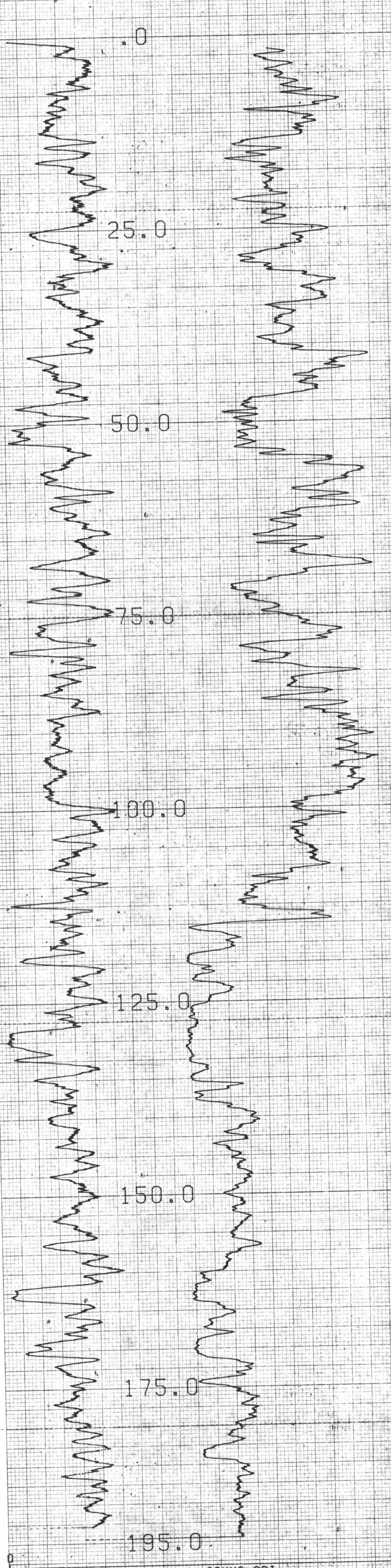
361

13

12

122

359



GAMMA API

N-N KCPS

702

COORDINATES
N. 149 936.3
S. 25 685.3
ELEVATION 2418.5

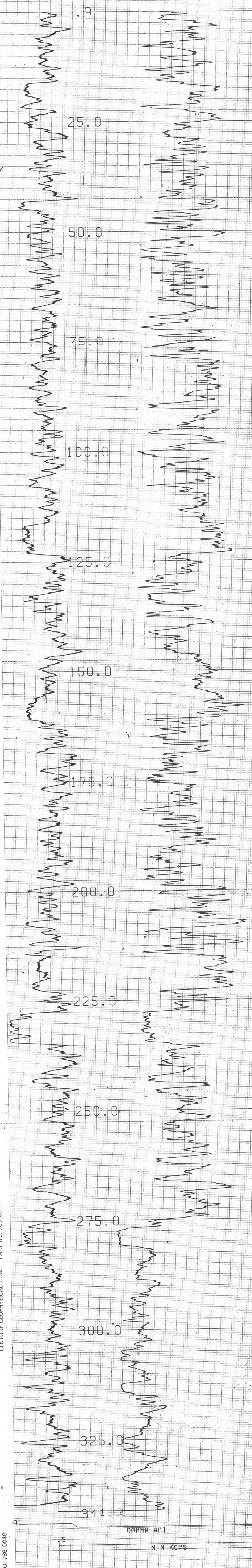
COMPANY
AREA
WELL
COUNTY STATE

Run No. 1	Run No. 2	MUD	Run No. 1	Run No. 2
Scale		Moisture		
Log Reading		Density		
Tooling Logged		Viscosity		
Burster (Driller)		Ret. (BHT)		
Casing (Piston Log)		pH		
Casing (Diller)		Cut. Temp		
Casing Size		BHT Temp		
Bit Size				
Bit Wpn.				

COMPU-LOG V8L2 PLOT 08-01-84

R.H. 1935
FORDING COAL LTD.
EAGLE MOUNTAIN

HOLE DIAMETER : 09.5
PROBE # 9955A - 232
SENSDR #4 CAL STD CPS = 152
SENSDR #4 CAL RUN CPS = 191
SENSDR #4 CAL BIAS = 0
DATA V8L2WA TRUCK # 367
GARRY LUCAS APPL.#7 L1



CENTURY GEOPHYSICAL CORP. PART NO. 786-0040

CENTURY GEOPHYSICAL CORP. PART NO. 786-0040

CENTURY GEOPHYSICAL CORP. PART NO. 786-0040

CENTURY GEOPHYSICAL CORP. PART NO. 786-0040

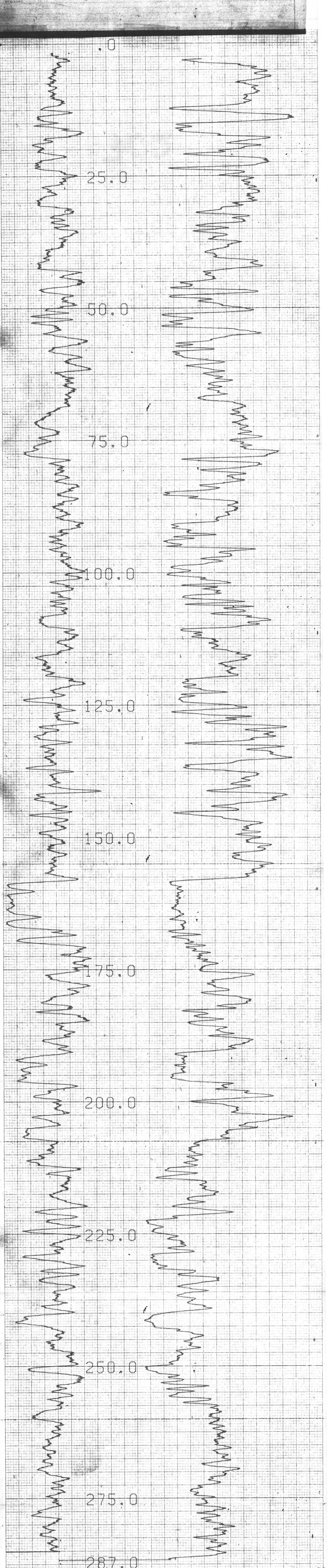
CENTURY GEOPHYSICAL CORP. PART NO. 786-0040

702

COORDINATES
N 149 603.6
S 25 480.0
ELEVATION: 2 359.20

D.F.
K.B.
G.I.

DATE	Run No. 1	Run No. 2	MUD	Run No. 1	Run No. 2
First Reading			Nature		
Last Reading			Density		
Footage Logged			Viscosity		
Bottom (Driller)			Resistivity		
Casing (Depth)			Res. to BHT		
Casing (Diameter)			pH		
Casing Size			Circ. Temp.		
34 Size			B.H. Temp.		
60 Size			Logged by		
			Witnessed by		



GAMMA API

N-N KCPS

COMPU-LDG V8L2 PLOT 08-30-84

RH-1936
FORDING COAL LTD.
EAGLE MTN.

HOLE DIAMETER : 10.0
PROB # 9055A - 232
SENSOR #4 CAL STD CPS = 152 D.D.A.

702

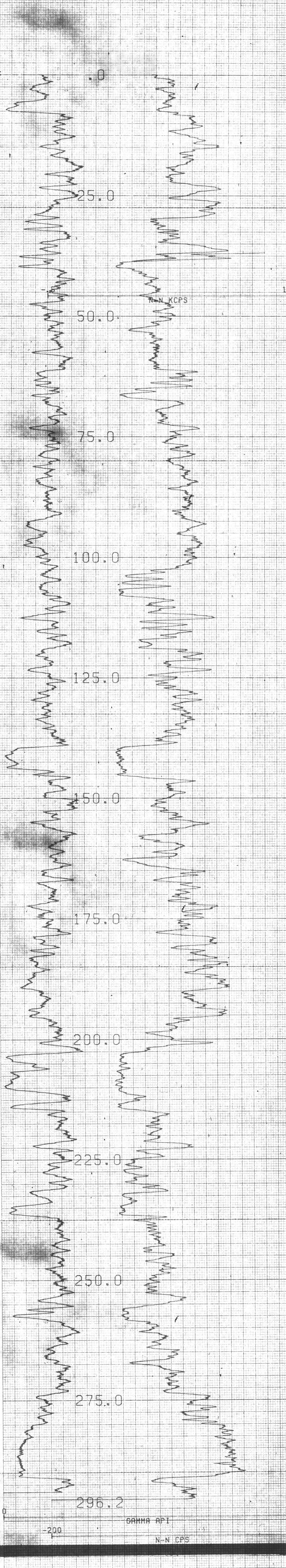
COORDINATES
N. 147 442.0
S. 26 502.8
ELEVATION 1813.96

COMPANY	STATE	Run No. 1	Run No. 2
WELL		MUD	
COUNTY		Moisture	
Depth		Density	
First Reading		Viscosity	
Last Reading		Resistivity	
Footage Logged		Rev. to BH	
Bottom (Dial)		gpm	
Coring From Log		Circ. Temp.	
Coring Depth		B.H. Temp.	
Coring Size			
3" Core			
6" Core			

Logged by _____
Witnessed by _____

REMARKS

CENTURY GEOPHYSICAL CORP. PART NO. 786-0040



COMPU-LOG VBL2 PLOT 09-30-84
 R.H. 2001
 FORDING COAL LTD.
 CASTLE MOUNTAIN
 HOLE DIAMETER : 10.0
 PROBE # 9055A - 232
 SENSOR #4 CAL STD CPS = 152
 SENSOR #4 CAL RUN CPS = 191
 SENSOR #4 CAL BIAS = 0
 DATA VBL2*8 TRUCK # 367
 JOHN STOKMANS APPL #7 LT

Mudco WELL LOG

SONAR
 F.C.L.
 RH 2005
 LOCATION
 CASTLE

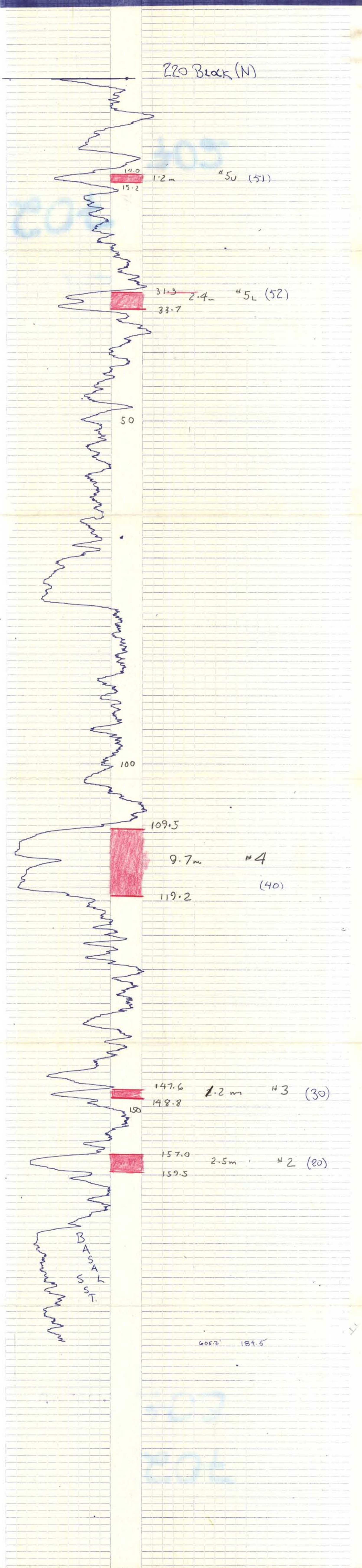
COMPANY FORDING COAL LTD
 AREA CASTLE MOUNTAIN
 WELL RH 2005
 COUNTY _____ STATE _____

COORDINATES
 N _____
 S _____
 ELEVATION _____
 DF _____
 FB _____
 GI _____

702

Date	Run No. 1	Run No. 2	MUD	Run No. 1	Run No. 2
28 SEPT 1984					
First Reading			Nature		
Last Reading			Density		
Footage Logged	184.5m		Viscosity		
Bottom (Driller)	200m		Resistivity		
Casing (From Log)	(2m)		Rel. to BHT		
Casing (Driller)	2m		pH		
Casing Size			Circ. Temp		
Bit Size	10 cm		B.H. Temp		
Bit Size				SPEED 2	
			Logged by	J.S.	
			Witnessed by	K.K.	

REMARKS



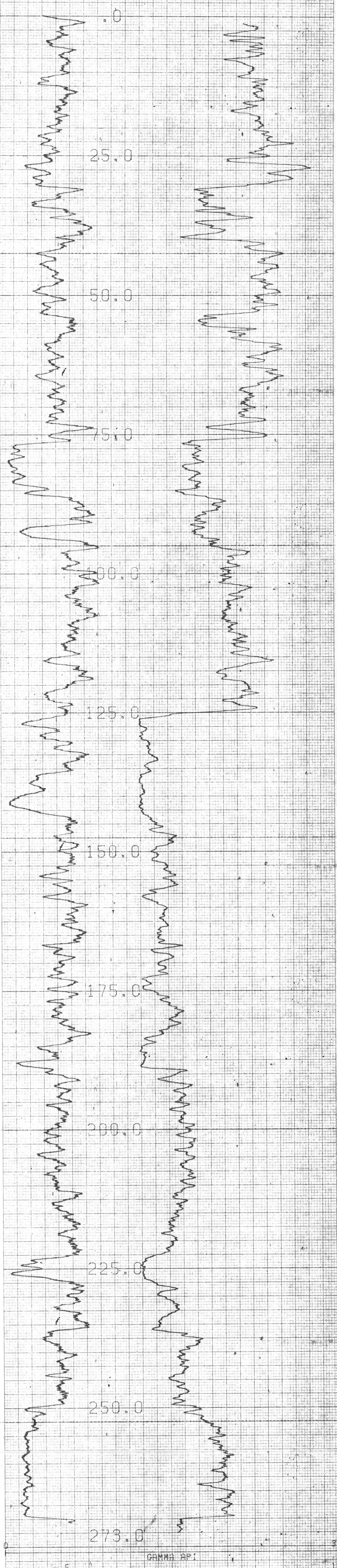
702

COORDINATES
N 147 430.8
S 27 266.7
ELEVATION 1 866.90
D.F.
K.B.
G.I.

Run No.	Run No. 2	MUD	Run No. 1	Run No. 2
Dev.		Name		
Test Pending		Density		
Test Pending		Viscosity		
Formation Log		Resistivity		
Force (Dip)		Res. to BH		
Coring (From Log)		pH		
Casing Depth		Circ. Temp		
Casing Size		BH Temp		
BH Size				

8L2 PLOT 09-26-84

R.H. 2007
 FORDING COAL LTD.
 CASTLE MOUNTAIN
 HOLE DIAMETER : 10.0
 PROBE # 9055A - 232
 SENSOR #4 CAL STD CPS = 152
 SENSOR #4 CAL RUN CPS = 191
 SENSOR #4 CAL BIAS = 0
 DATA VBL2#A TRUCK # 367
 SHANE FORTIN APPL.#7 L1



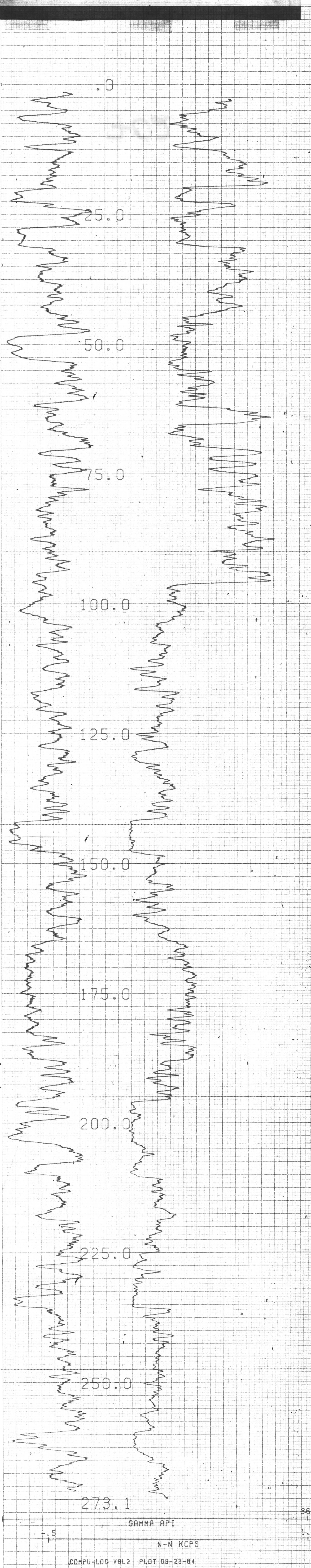
GAMMA API
N-N KCPS

CENTURY GEOPHYSICAL CORP. PART NO. 786-0040

702

COORDINATES
N 147 326.6
S 27 034.5
ELEVATION 1897.57

DATE	Run No. 1	Run No. 2	MUD	Run No. 1	Run No. 2
Time Reading			Type		
Right Reading			Density		
Footage Logged			Viscosity		
Bottom (Depth)			Resistivity		
Logging Interval			Res. to BH		
Casing Size			PH		
Bit Size			Circ Temp		
			BM Temp		



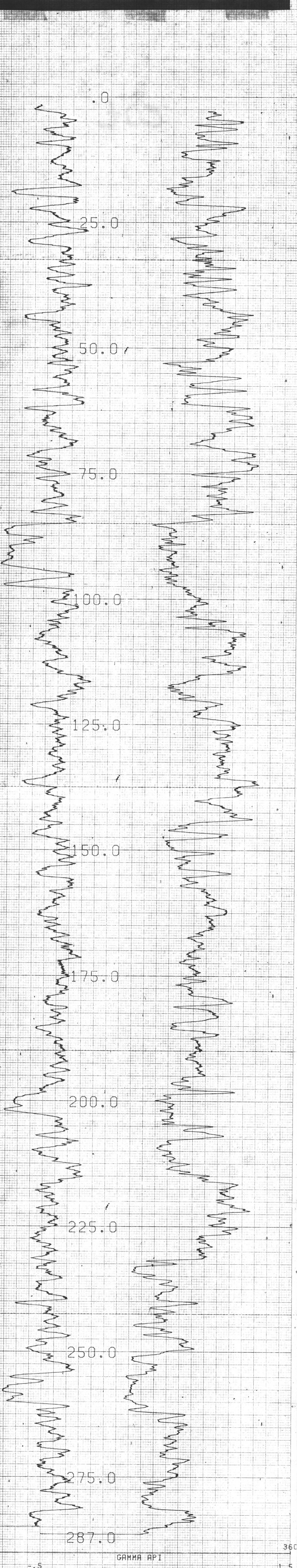
COMPU-LOG V8L2 PLOT 09-23-84
 RH-2010
 FORDING COAL LTD.
 CASTLE MTN.
 HOLE DIAMETER = 10.0
 PROBE # 9055A 232
 SENSOR #4 CAL STD CPS = 152
 SENSOR #4 CAL RUN CPS = 191
 SENSOR #4 CAL BIAS = 0
 DATA V8L2WA TRUCK # 367
 DAVE D'ANDREA APPL.#7 LI

CENTURY GEOPHYSICAL CORP. PART NO. 786-0040

702

COORDINATES
N 146 906.8
S 26 882.8
ELEVATION 1937.82
DE
KB
GL

Date	Run No. 1	Run No. 2	MUD	Run No. 1	Run No. 2
First Reading			Notes		
Last Reading			Density		
Footage Logged			Viscosity		
Bottom (Drill)			Reactivity		
Casing (From Log)			Res. to BHT		
Casing (Drill)			pH		
Casing Size			Circ. Temp.		
SA Size			BM Temp.		
SA Size			Logged by		
			Witnessed by		



COMPU-LOG V8L2 PLOT 09-21-84

RH-2018
 FORDING COAL LTD.
 CASTLE MTN.

HOLE DIAMETER : 10.0
 PROBE # 9055A - 232
 SENSOR #4 CAL STD CPS = 152
 SENSOR #4 CAL RUN CPS = 191
 SENSOR #4 CAL BIAS = 0
 DATA V8L2*RA TRUCK # 367
 DAVE D'ANDREA APPL.#7 LI