

**1987 EXPLORATION REPORT
TRANSFER, GRIZZLY AND PERRY CREEK AREAS**

Table of Contents

APPENDIX 1

<u>SECTION</u>	<u>DESCRIPTION</u>	<u>DRAWING NUMBERS</u>
1.1	Exploration Location Maps (1:10,000)	
1.1.1	Transfer/Grizzly	87-902-28-001 ✓
1.1.2	Perry Creek	87-906-28-001 ✓
1.2	Geology Maps	
1.2.1	Transfer Area (2 sheets)	87-903-20-001 ✓
		87-903-20-002 ✓
1.2.2	Grizzly Area	87-905-20-001 ✓
1.2.3	Perry Creek Area	88-906-20-001 ✓
1.2.4	Regional Geology Map	77-002-20-002 ✓
1.3	Survey Maps	
1.3.1	Transfer and Grizzly Areas	87-76-1 ✓
		87-76-2 ✓
		87-76-4 ✓
		87-76-5 ✓
		87-76-6 ✓
		87-76-7 ✓
		87-76-9 ✓
1.3.2	Adit Locations	87-76-9a ✓
		87-76-9b ✓
		87-76-9c ✓
		87-76-9d ✓
1.3.3	Perry Creek Area	87-76-8 ✓
1.4	Topographic Maps - 1987 Topographic Index Map	88-902-12-01 ✓
	- Sheet 1	88-902-30-01 ✓
	- Sheet 2	88-902-30-02 ✓
	- Sheet 3	88-902-30-03 ✓
	- Sheet 4	88-902-30-04 ✓
	- Sheet 5	88-902-30-05 ✓
	- Sheet 6	88-902-30-06 ✓
	- Sheet 7	88-902-30-07 ✓
	- Sheet 8	88-902-30-08 ✓
	- Sheet 9	88-902-30-09 ✓
	- Sheet 9a	88-902-30-10 ✓
	- Sheet 10	88-902-30-11 ✓
	- Sheet 11	88-902-30-12 ✓
	- Sheet 12	88-902-30-13 ✓

*not filmed
(redundant)*

*not filmed
(non-geological)*

*not filmed
(non-geological)*

Appendix 1

Section 1.1

Exploration Location Maps (1:10,000)

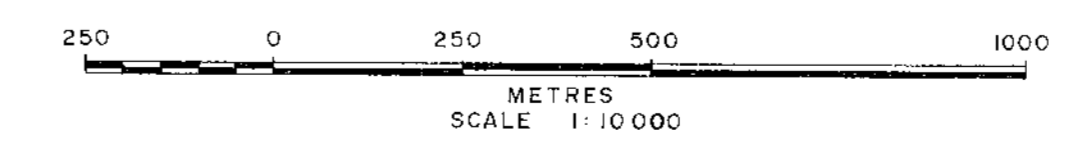
Appendix 1
Section 1.1.1
Transfer/Grizzly



739

LEGEND

- EXISTING ROTARY DRILL HOLE
- ◐ EXISTING DIAMOND DRILL HOLE
- PROPOSED ROTARY DRILL HOLE
- ◆ PROPOSED DIAMOND DRILL HOLE
- ▲ EXISTING PHOTO OR SURVEY CONTROL POINT
- ▲ PROPOSED PHOTO OR SURVEY CONTROL POINT
- EXISTING ACCESS ROAD
- PROPOSED ACCESS ROAD
- OVERLAND CONVEYOR
- POWER LINE
- TRANSMISSION LINE
- EXISTING ADIT



0	20	188	UPDATED DRILLING TO DEC 31, 1987	K.V.	O.J.	S.J.	Drn.	Des.	App.
Rev.	D	M	Y						

QUINTETTE COAL LIMITED
Project Manager
DENISON MINES LIMITED
COAL DIVISION

TRANSFER/GRIZZLY AREA
EXPLORATION LOCATION MAP

PLAN SHOWING
SURVEY CONTROL
DRILL HOLES
AND
ACCESS ROADS
TRANSFER AREA

SCALE 1: 2500
METRES

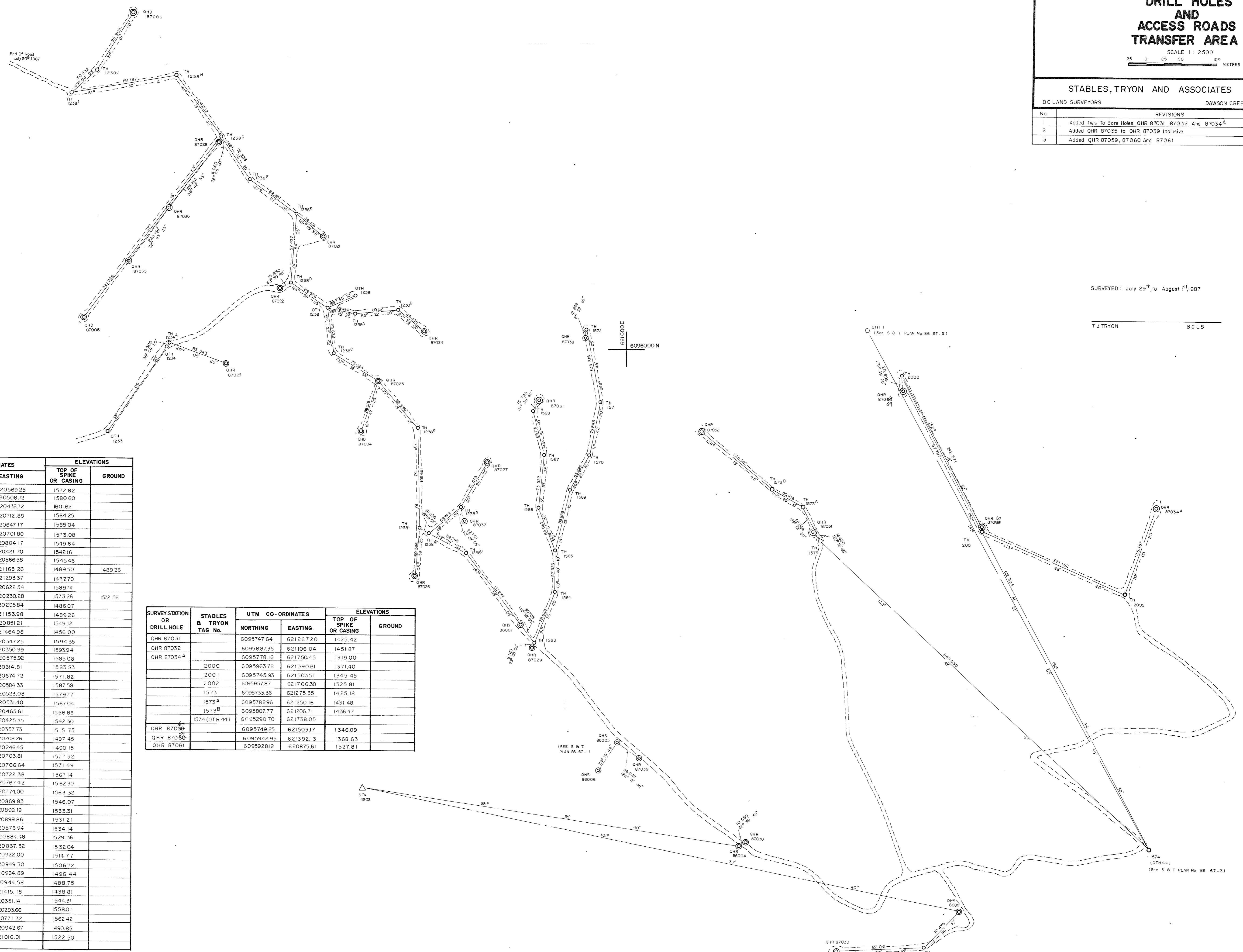
739

STABLES, TRYON AND ASSOCIATES
BC LAND SURVEYORS DAWSON CREEK, B.C. FILE No 87-76-5

No	REVISIONS	DATE
1	Added Ties To Bore Holes QHR 87031, 87032 And 87034 ^A	14 /08 /87
2	Added QHR 87035 to QHR 87039 Inclusive	6 /10 /87
3	Added QHR 87059, 87060 And 87061	22 /12 /87

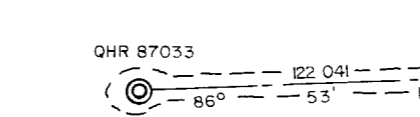
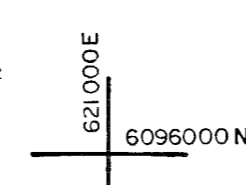
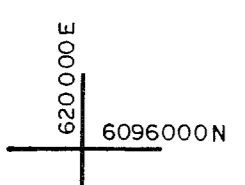
SURVEYED: July 29th to August 1st 1987

T.J. TRYON B.C.L.S.



SURVEY STATION OR DRILL HOLE	STABLES & TRYON TAG No.	U.T.M. CO-ORDINATES		ELEVATIONS	
		NORTHING	EASTING	TOP OF SPIKE OR CASING	GROUND
QHR 87021		6096160.32	620569.25	1572.82	
QHR 87022		6096087.30	620508.12	1580.60	
QHR 87023		6095983.11	620432.72	1601.62	
QHR 87024		6096026.86	620712.89	1564.25	
QHR 87025		6095957.56	620647.17	1595.04	
QHR 87026		6095680.63	620701.80	1573.08	
QHR 87027		6095842.94	620804.17	1549.64	
QHR 87028		6096294.42	620421.70	1542.16	
QHR 87029		6095579.20	620866.58	1545.46	
QHR 87030		6095302.31	621163.26	1489.50	1489.26
QHR 87033		6095148.03	621293.37	1437.70	
QHD 87004		6095885.15	620622.54	1589.74	
QHD 87005		6096045.68	620230.28	1573.26	1572.56
QHD 87006		6096478.67	620295.84	1486.07	
QHS 86004	1212	6095297.30	621153.98	1489.26	
QHS 86007	1214	6095611.08	620891.21	1549.12	
QHS 86011	1210	6095204.48	621464.98	1456.00	
1234		6096002.92	620347.25	1594.35	
1234 ^A		6096008.23	620350.99	1593.94	
1238		6096058.05	620575.92	1585.08	
1238 ^A		6096051.79	620614.81	1583.83	
1238 ^B		6096056.65	620674.72	1571.82	
1238 ^C		6095994.81	620584.33	1587.58	
1238 ^D		6096095.03	620523.08	1579.77	
1238 ^E		6096192.06	620531.40	1567.04	
1238 ^F		6096241.67	620465.61	1556.86	
1238 ^G		6096301.60	620423.35	1542.30	
1238 ^H		6096385.78	620357.73	1515.75	
1238 ^I		6096363.46	620208.26	1497.45	
1238 ^J		6096396.52	620246.45	1490.15	
1238 ^K		6095889.53	620703.81	1577.32	
1238 ^L		6095750.02	620706.64	1571.49	
1238 ^M		6095741.18	620722.38	1567.14	
1238 ^N		6095780.40	620767.42	1562.30	
1238 ^O		6095712.17	620774.00	1563.32	
1563		6095586.68	620869.83	1546.07	
1564		6095659.90	620899.19	1533.31	
1565		6095717.80	620899.86	1531.21	
1566		6095778.12	620876.94	1534.14	
1567		6095851.22	620884.48	1529.36	
1568		6095914.68	620867.32	1532.04	
1569		6095803.82	620922.00	1514.77	
1570		6095852.32	620949.30	1506.72	
1571		6095927.53	620964.89	1496.44	
1572		6096029.70	620944.58	1488.75	
1210 ^A		6095154.66	621415.18	1438.81	
QHR 87036		6096202.09	620351.14	1544.31	
QHR 87035		6096125.30	620293.66	1558.01	
QHR 87037		6095758.00	620771.32	1562.42	
QHR 87038		6096017.01	620942.67	1490.85	
QHR 87039		6095418.96	621016.01	1522.50	

SURVEY STATION OR DRILL HOLE	STABLES & TRYON TAG No.	UTM CO-ORDINATES		ELEVATIONS	
		NORTHING	EASTING	TOP OF SPIKE OR CASING	GROUND
QHR 87031		6095747.64	621267.20	1425.42	
QHR 87032		6095887.35	621106.04	1451.87	
QHR 87034 ^A		6095778.16	621750.45	1319.00	
	2000	6095963.78	621390.61	1371.40	
	2001	6095745.35	621503.51	1345.45	
	2002	6095657.87	621706.30	1325.81	
	1573	6095733.36	621275.35	1425.18	
	1573 ^A	6095782.96	621250.16	1431.48	
	1573 ^B	6095807.77	621206.71	1436.47	
	1574 (OTH 44)	6095290.70	621738.05		
QHR 87059		6095749.25	621503.17	1346.09	
QHR 87060		6095942.95	621392.13	1368.63	
QHR 87061		6095928.12	620875.81	1527.81	





NOTE: Bearings are derived from co-ordinates of OTH 1559 and Trig Station 'AIRY'

SURVEYED August 7th to August 10th, 1987

J. TRYON B.C.L.S.

SURVEY STATION OR DRILL HOLE	STABLES & TRYON TAG No.	U.T.M. CO-ORDINATES		ELEVATIONS	
		NORTHING	EASTING	TOP OF SPIRE OR CASING	GROUND
AIRY					
	2007	6095198.12	622353.55	1330.58	
	2008	6095168.33	622458.75	1298.05	
	2009	6095149.05	622428.61	1294.39	
	2010	6095104.57	622468.77	1281.68	
	2011	6095015.07	622396.03	1262.55	
	2012	6095003.69	622335.69	1259.74	
	2013	6094990.66	622288.92	1250.30	
	2014	6095011.47	622202.18	1240.93	
	2015	6095021.47	622118.26	1228.95	
	2016	6094974.62	622066.61	1218.31	
	2017	6094904.73	62214.16	1204.32	
	2018	6094861.82	622301.42	1192.38	
	2019	6094838.56	622354.42	1190.27	
	2020	6094831.86	622429.15	1172.04	
	2021	6094849.95	622562.14	1158.13	
	2022	6094824.32	622667.42	1147.11	
	2023	6094856.45	622733.09	1142.80	
	2024	6094883.90	622790.52	1134.45	
	2025	6094883.91	622868.18	1113.67	
	2025A	6095039.83	622926.14	1117.03	
OHR 87009		6095088.70	622957.50	1108.43	
	2026	6094925.29	622942.81	1103.65	
	2027	6094971.89	623068.60	1087.24	
	2028	6094975.11	623108.25	1073.24	
	2029	6094848.52	623145.62	1060.76	
	2030	6094825.00	623108.11	1061.81	
	2031	6094678.17	623155.80	1042.68	
	2032	6094793.64	623282.38	1019.26	
	2033	6094833.84	623367.42	1003.53	
	2034	6094845.92	623422.13	993.94	
	2035	6094751.17	623386.40	980.54	
	2036	6094638.84	623388.13	959.34	
	2037	6094716.70	623489.62	935.84	
	2038	6094784.38	623580.42	913.57	

OHR 87010	6094879.67	623642.35	894.89	
	2039	6094977.61	623699.19	879.16
	2040	6095041.95	623701.02	893.77
	2041	6095135.00	623767.18	898.71
	2042	6095229.57	623839.38	885.68
	2043	6095344.73	623875.50	886.43
	2044	6095477.82	623940.67	878.43
	2045	6095475.66	624132.42	862.62
	2046	6095437.45	624197.62	865.51
	2047	6095419.65	624277.43	884.25
	2048	6095366.60	624343.39	878.71
	2049	6095352.76	624395.21	874.75
	2050	6095305.49	624445.20	865.07
	2051	6095301.32	624538.12	857.13
	2052	6095323.32	625301.09	772.98
	1529	6095452.32	625257.78	773.80
OHR 87041	6095150.74	623801.94	891.53	
OHR 87042	6095081.35	623748.75	891.10	
OHR 87043	6094827.36	623622.99	902.11	
OHR 87011	6095267.55	623875.17	877.77	
OHR 87040	6095283.74	622166.77	1361.19	
OHR 87044	6094992.35	622709.19	880.04	
OHR 87045	6094837.80	623934.43	838.09	
OHR 87047	6094822.28	623977.78	838.73	
OHR 87048	6095005.91	624037.45	836.62	
OHR 87049	6094780.33	623876.65	841.24	
OHR 87050	6095263.27	624327.41	844.50	

2	Addd OHR 87040, 87044, 87045, 87047, 87048, 87049 And 87050	7 / 10 / 87
1	Addd OHR 87041, 87042, 87043 And OHR 87011	4 / 09 / 87
No	REVISIONS	DATE
QUINTETTE COAL LIMITED		
PLAN SHOWING SURVEY CONTROL DRILL HOLES AND ACCESS ROADS TRANSFER AREA		
739		
SCALE 1:2500		
0 25 50 100 METRES		
STABLES, TRYON AND ASSOCIATES		FILE No. 87-76-G
B.C. LAND SURVEYORS		DAWSON CREEK, B.C.

623000 E
6095000 N

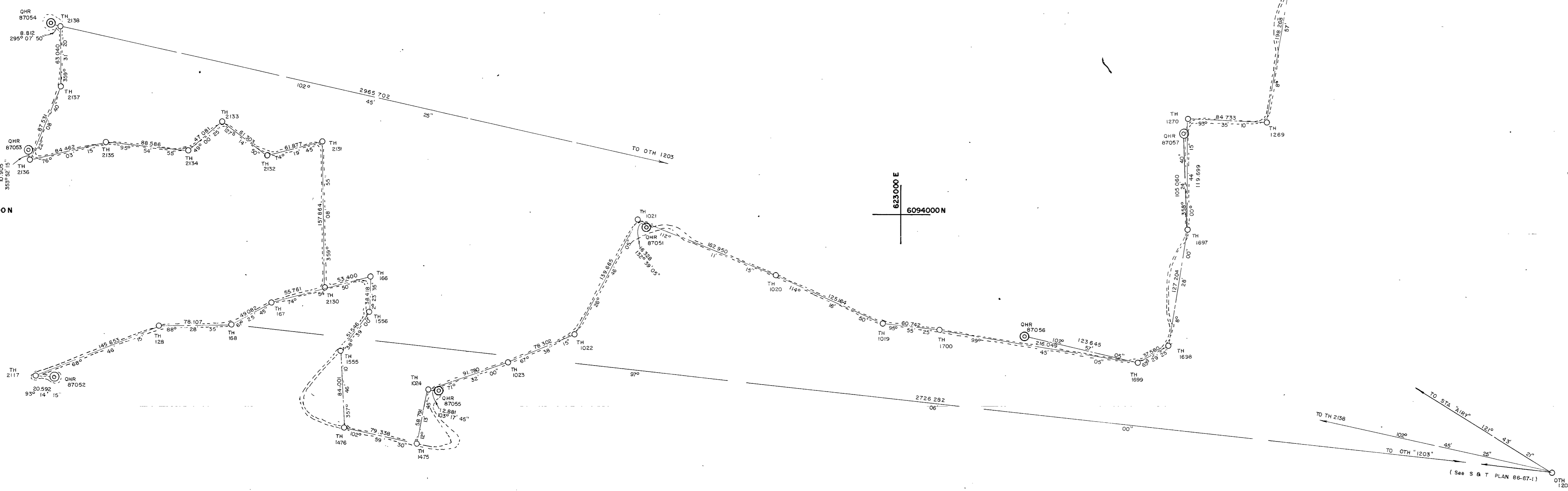
623000 E
6095000 N

SURVEY STATION OR DRILL HOLE	STABLES & TRYON TAG No.	UTM. CO-ORDINATES		ELEVATIONS	
		NORTHING	EASTING	TOP OF IRON BAR OR CASING	GROUND
2038		6094784.38	623580.42	913.57	
1323		6094668.76	623601.51	894.94	
1324		6094588.08	623546.52	892.18	
1325		6094559.17	623514.53	888.45	
1266		6094358.66	623549.27	886.42	
1267		6094322.76	623520.58	888.75	
1268		6094294.39	623423.77	885.00	
1269		6094098.65	623392.89	881.20	
1270		6094103.95	623308.36	877.60	
1697		6093984.30	623306.82	872.80	
1698		6093858.55	623288.10	860.28	
1699		6093841.80	623254.48	859.70	
1700		6093878.38	623041.64	857.56	
1019		6093884.66	622981.24	854.47	
1020		6093936.11	622867.20	844.19	
1021		6093997.63	622716.37	862.88	
1022		6093872.97	622653.49	876.12	
1023		6093843.23	622581.11	885.68	
1024		6093814.16	622494.09	893.87	
1475		6093756.74	622481.65	901.18	
1476		6093774.58	622404.37	911.20	
1555		6093858.49	622401.10	923.47	
1556		6093898.75	622433.28	929.66	
166		6093937.13	622434.88	933.92	
167		6093908.74	622329.53	947.81	
168		6093886.27	622286.44	951.03	
128		6093883.19	622208.39	954.68	
2117		6093830.47	622072.67	958.19	
1203		6093548.48	624991.03	780.03	
2130		6093923.24	622383.34	940.46	
2131		6094081.06	622380.99	959.87	
2132		6094064.36	622321.44	972.56	
2133		6094101.46	622272.66	985.07	
2134		6094070.60	622237.13	995.07	
2135		6094079.72	622149.05	1015.37	
2136		6094059.38	622067.11	1033.75	
2137		6094140.45	622100.09	1041.28	
2138		6094203.47	622099.57	1048.72	
QHR 87051		6093986.57	622728.37	857.50	
QHR 87052		6093829.31	622093.22	951.88	
QHR 87053		6094070.22	622065.95	1034.79	
QHR 87054		6094207.21	622091.59	1049.43	
QHR 87055		6093811.20	622506.62	890.45	
QHR 87056		6093869.50	623134.02	857.51	
QHR 87057		6094089.28	623303.90	876.83	
QHR 87058		6094282.63	623438.87	881.64	

road starts @ QHR 87043

SURVEYED October 1st, and October 2nd, 1987.

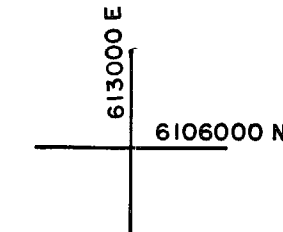
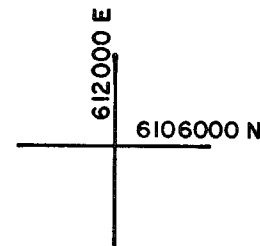
T. TRYON B.C.L.S.



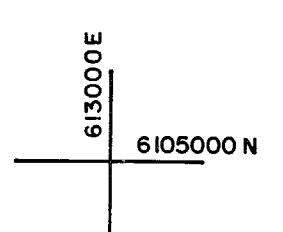
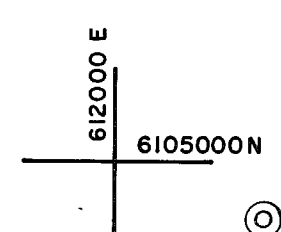
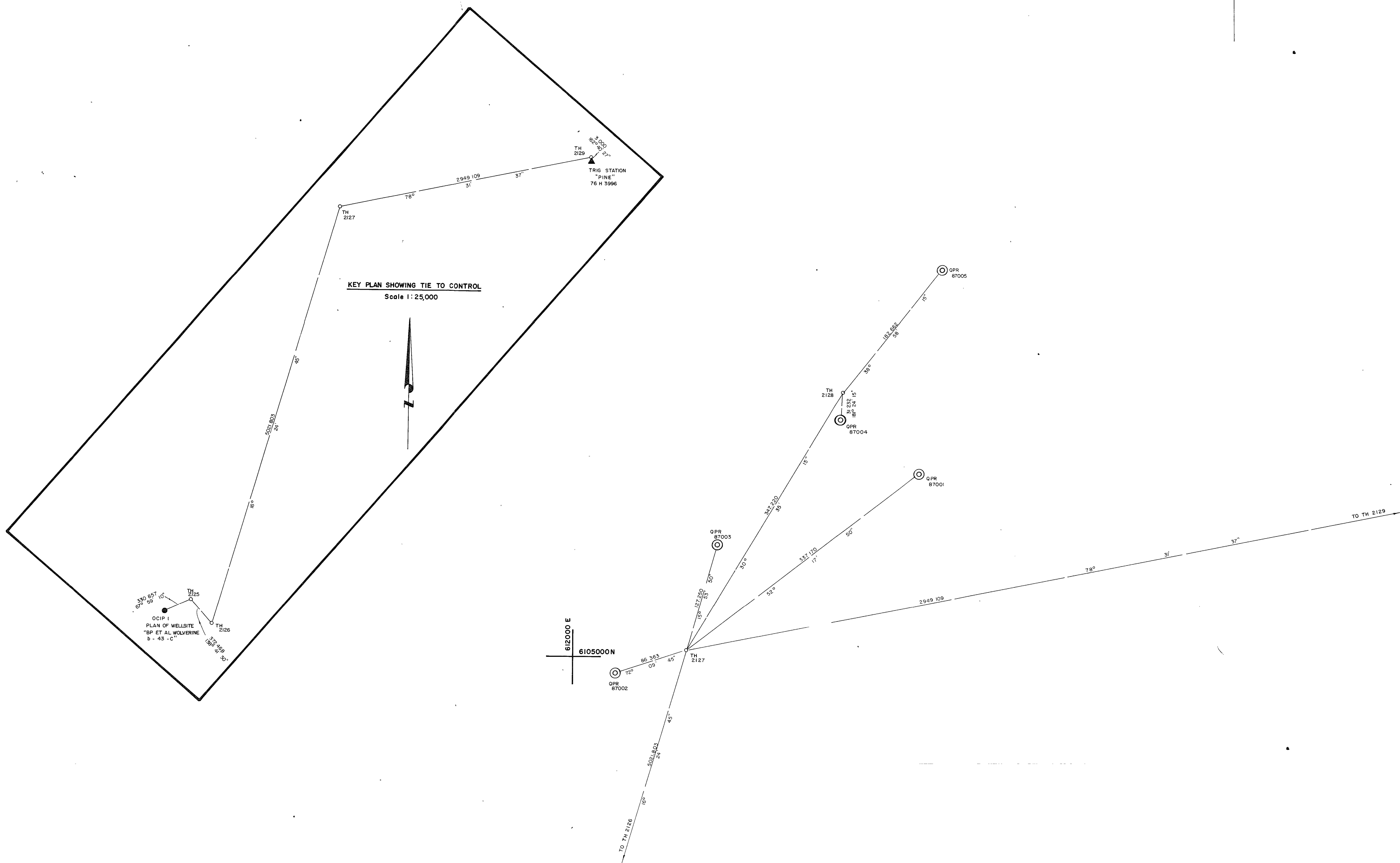
623000 E
6094000 N

623000 E
6094000 N

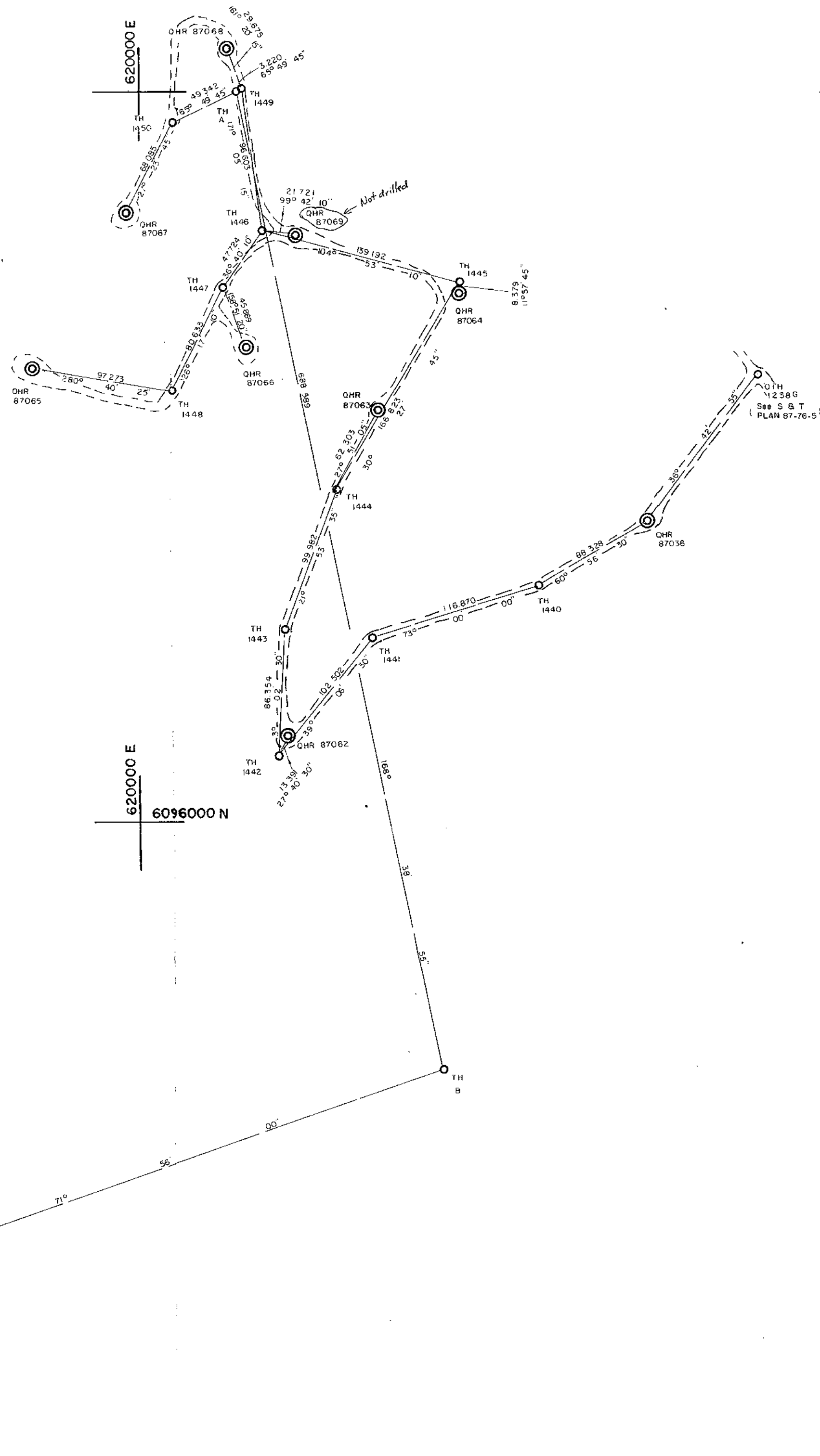
2	Added QHR 87051 and 87053 to 87058 and Traverse	21 / 10 / 87
1	Balance Co-ordinates And Elevations	20 / 10 / 87
No.	REVISION	DATE
QUINTETTE COAL LIMITED		
PLAN SHOWING SURVEY CONTROL DRILL HOLES AND ACCESS ROADS TRANSFER AREA		
739		
SCALE 1 : 2500		
25 0 25 50 100 METRES		
STARIS, TRYON AND ASSOCIATES		FILE No. 87-76-7
B.C. LAND	S	DAWSON CREEK, B.C.



SURVEY STATION OR DRILL HOLE	STABLES & TRYON TAG No.	UTM CO-ORDINATES		ELEVATIONS	
		NORTHING	EASTING	TOP OF IRON BAR OR CASING	GROUND
OCIP1 (b-43-c)		6100349.36	610160.56	858.06	
	2125	6100473.33	610467.21	861.53	
	2126	6100193.66	610713.01	882.50	
	2127	6105009.09	612131.52	944.62	
	2128	6105307.88	612308.13	935.40	
	2129	6105995.49	615020.91	833.11	
"PINE"		6105992.63	615021.80	833.25	
QPR 87001		6105215.21	612398.18	918.24	
QPR 87002		6104982.65	612049.34	954.63	
QPR 87003		6105131.43	612166.36	945.01	
QPR 87004		6105276.67	612307.37	930.10	
QPR 87005		6105449.84	612422.97	923.61	



No.	REVISION	DATE
QUINETTE COAL LIMITED		
PLAN SHOWING SURVEY CONTROL DRILL HOLES AND ACCESS ROADS PERRY CREEK AREA		
739		
SCALE 1:2500		
STABLES, TRYON AND ASSOCIATES		87-76-8
B.C. L.A.N.	JRS	DAWSON CREEK, B.C.



6096500 N

SURVEY STATION OR DRILL HOLE	STABLES & TRYON TAG No.	UTM CO-ORDINATES		ELEVATIONS	
		NORTHING	EASTING	TOP OF SPIKE OR CASING	GROUND
QHR 87036		6096202.09	620351.14	1544.31	
	TH 1440	6096159.21	620273.97	1547.31	
	TH 1441	6096125.06	620162.25	1546.16	
	TH 1442	6096045.56	620097.63	1546.70	
	TH 1443	6096131.75	620102.21	1532.78	
	TH 1444	6096224.48	620139.47	1517.31	
	TH 1445	6096368.21	620224.01	1499.56	
	TH 1446	6096403.95	620089.55	1494.87	
	TH 1447	6096365.69	620061.06	1501.55	
	TH 1448	6096293.42	620025.37	1516.27	
	TH 1449	6096499.34	620074.59	1483.56	
	TH 1450	6096477.83	620026.66	1493.06	
	TH A	6096498.02	620071.65		
	TH B	6095828.22	620207.12		
	OTH 1231	6095658.90	619704.37	1663.48	
QHR 87062		6096057.41	620103.84	1544.99	
QHR 87063		6096279.54	620168.56	1508.25	
QHR 87064		6096360.01	620222.27	1499.61	
QHR 87065		6096311.43	619929.82	1519.31	
QHR 87066		6096322.92	620077.60	1505.69	
QHR 87067		6096417.41	619995.34	1499.61	
QHR 87068		6096527.44	620065.10	1484.15	
QHR 87069		6096400.29	620110.95	1491.34	

Not drilled

NOTE Drill Hole QHR 87069 is approximate location, was not drilled at time of survey.

SURVEYED December 18th and 19th, 1987.

T. TRYON B.C.L.S.

QUINTETTE COAL LIMITED

**PLAN SHOWING
SURVEY CONTROL
DRILL HOLES
AND
ACCESS ROADS
TRANSFER AREA**

739

SCALE 1 : 2500
25 0 25 50 100 METRES

STABLES, TRYON AND ASSOCIATES

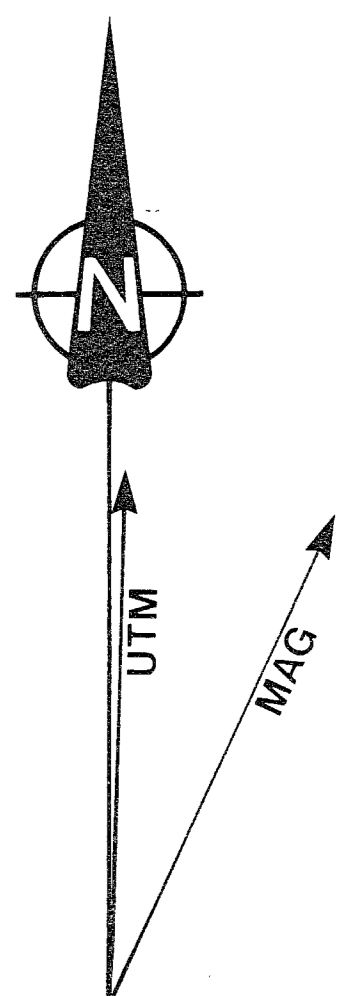
B.C. LAND

15

DAWSON CREEK, B.C.

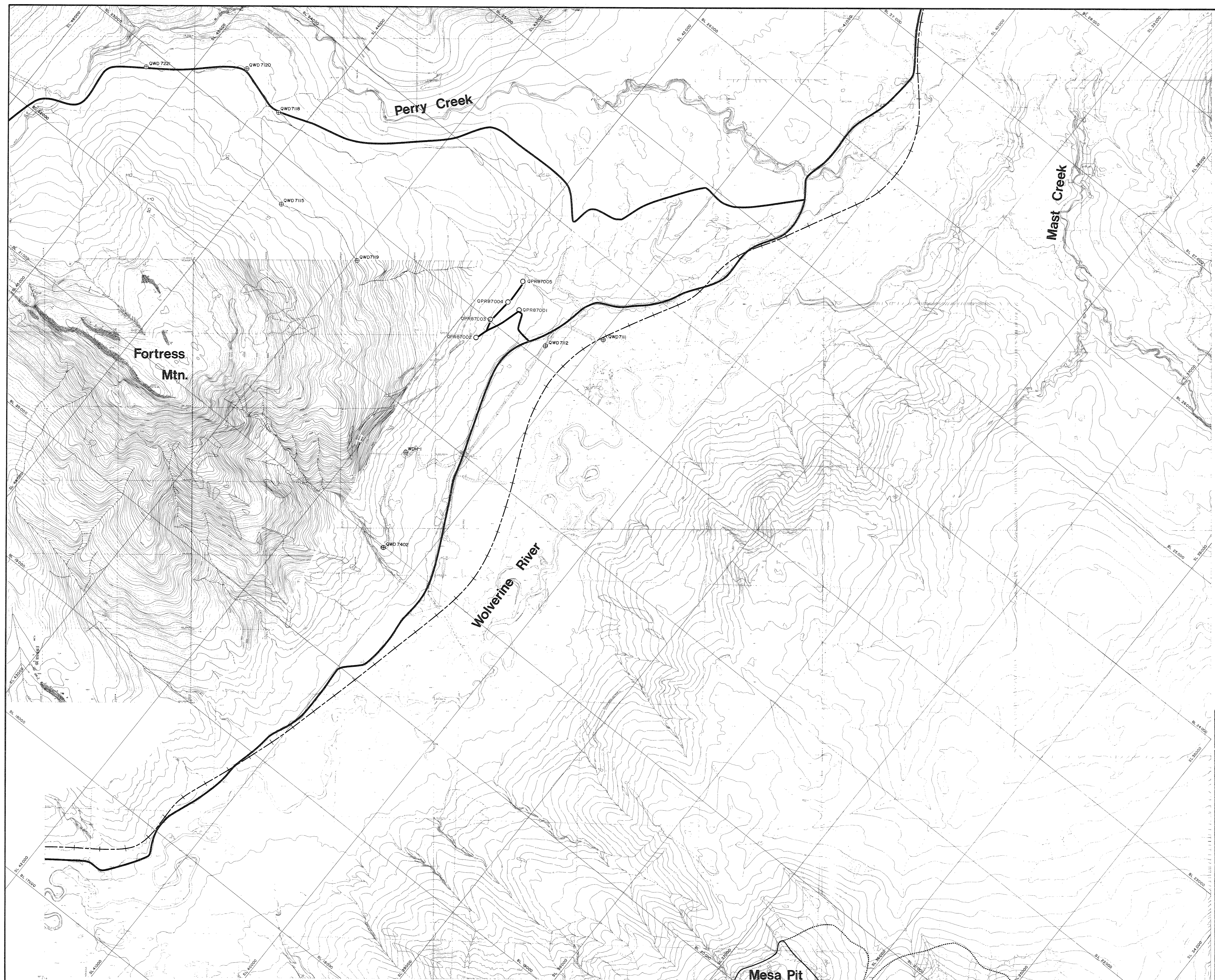
PLAN 87-76-9

Appendix 1
Section 1.1.2
Perry Creek



Legend:

- Road
- Railroad
- Property Boundary
- Pit Limit
- Dump Limit
- Rotary Hole
- Diamond Drill Hole



739			
0	22/12/97	ORIGINAL DRAFT	KJV D.J. D.J.
Rev.	D	M	Y
		Revision Description	Drn. Des. App.
QUINETTE COAL LIMITED			
Project Manager			
DENISON MINES LIMITED			
COAL DIVISION			
Area	PERRY CREEK / MESA		Category EXPLORATION
Drawing Title			
PERRY CREEK AREA			
EXPLORATION LOCATION MAP			
Scale	Drawing No.	Rev.	
1:10000	87-906-28-001	0	

Do not film
this section

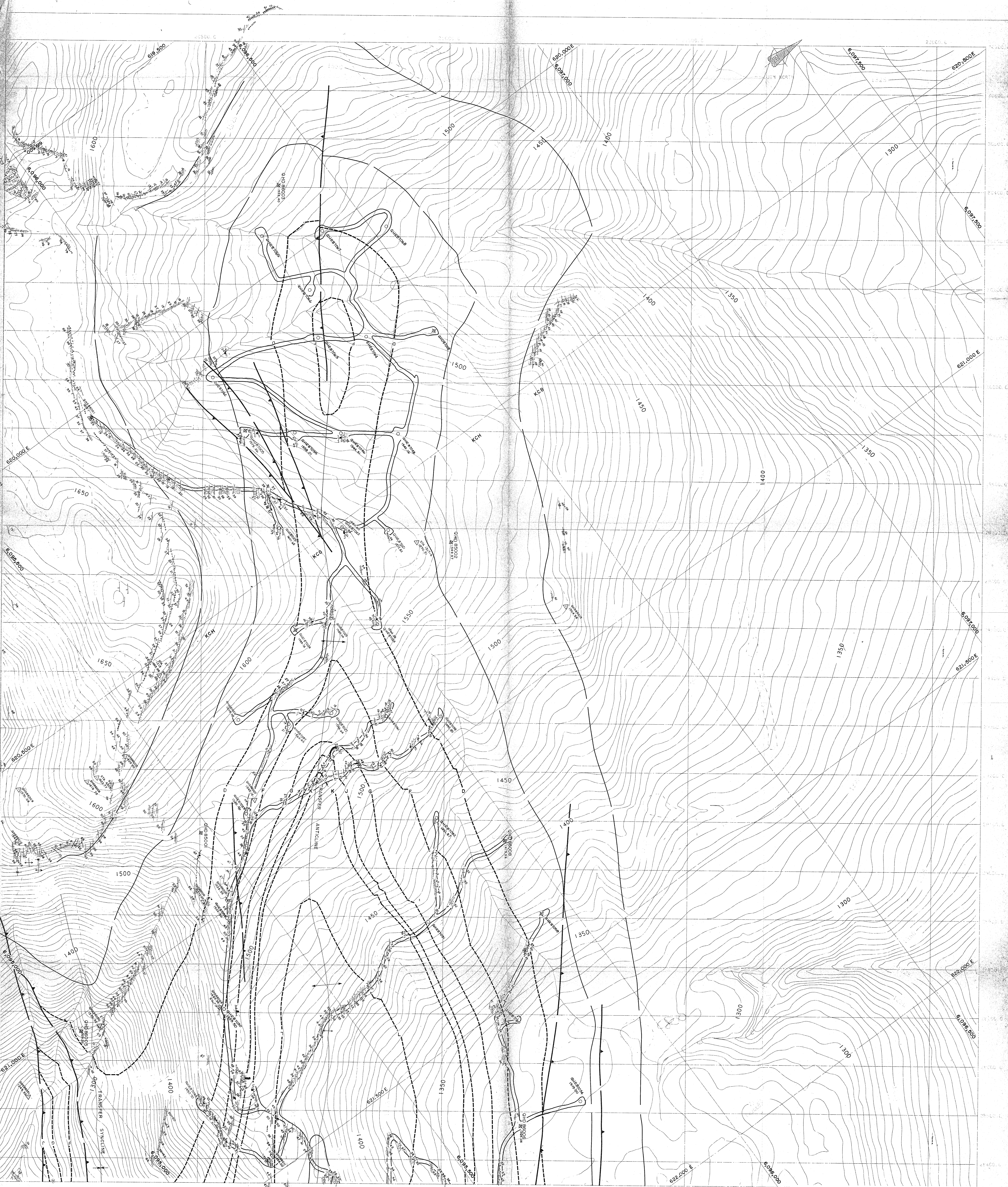
Appendix 1
Section 1.2
Geology Maps

Do not
film this
section.

Appendix 1

Section 1.2.1

Transfer Area (2 sheets)



LEGEND

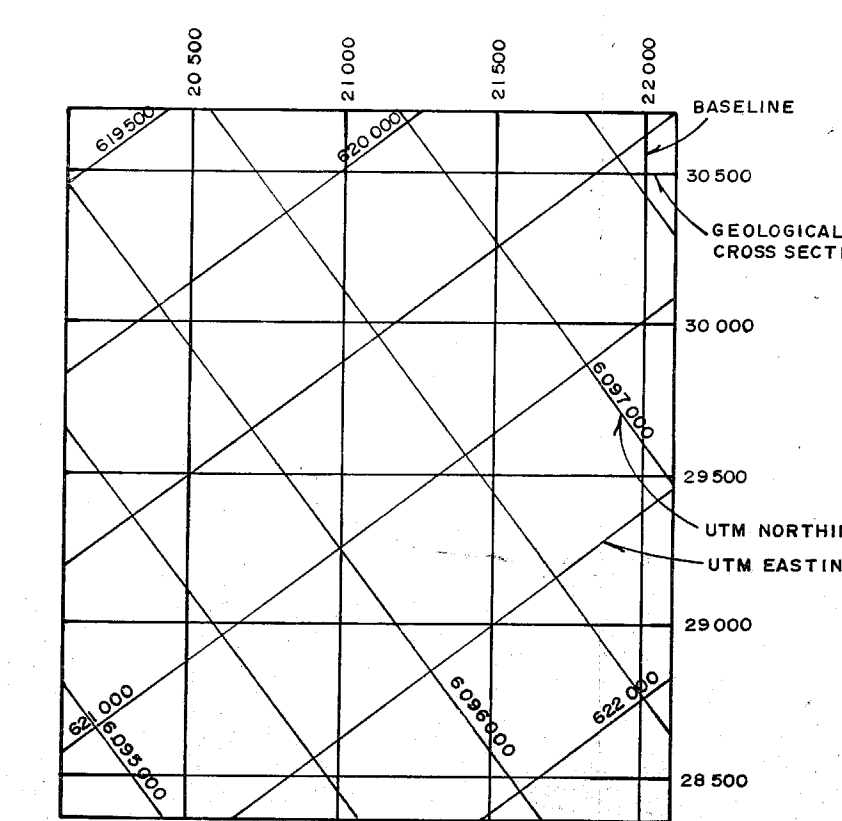
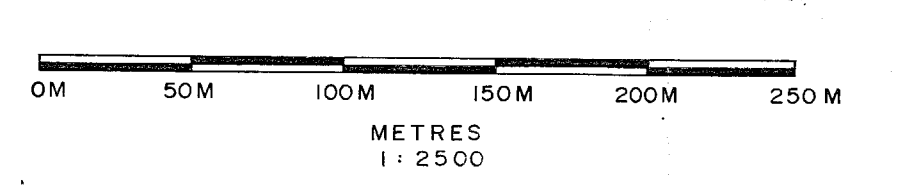
- TREELINE
- == ROADS
-)(TRENCH
- ROTARY DRILL HOLE
- ⊕ DIAMOND DRILL HOLE
- ↗ THRUST FAULT
- ↖ ANTICLINE
- ↘ SYNCLINE
- GEOLOGIC CONTACT
- - - COAL SEAM OUTCROP
- △ CONTROL POINT w. ELEVATION
- 35 STRIKE & DIP - BEDDING
- 30 STRIKE & DIP - COAL SEAM
- 150 STRIKE & DIP - FAULT PLANE

GEOLOGIC FORMATIONS

- [KS] SHAFTSBURY
- [KCB] BOULDER CREEK
- [KCH] HULCROSS
- [KCG] GATES
- [KM] MOOSEBAR
- [KG] GETHING
- [KCD] CADOMIN

LITHOLOGIC SYMBOLS

- [Pattern] CONGLOMERATE
- [Pattern] SANDSTONE
- [Pattern] SILTSTONE (Sandy Shale)
- [Pattern] CLAYSTONE (Shale)
- [Pattern] COAL



739

1	31/2	BY GEOLOGY UPDATE	KJV	DJ	DJ
0	16/2	BY ORIGINAL DRAFT	RLR	H.W.	
REV.	DATE	REVISION DESCRIPTION	DRN.	DES.	APP.

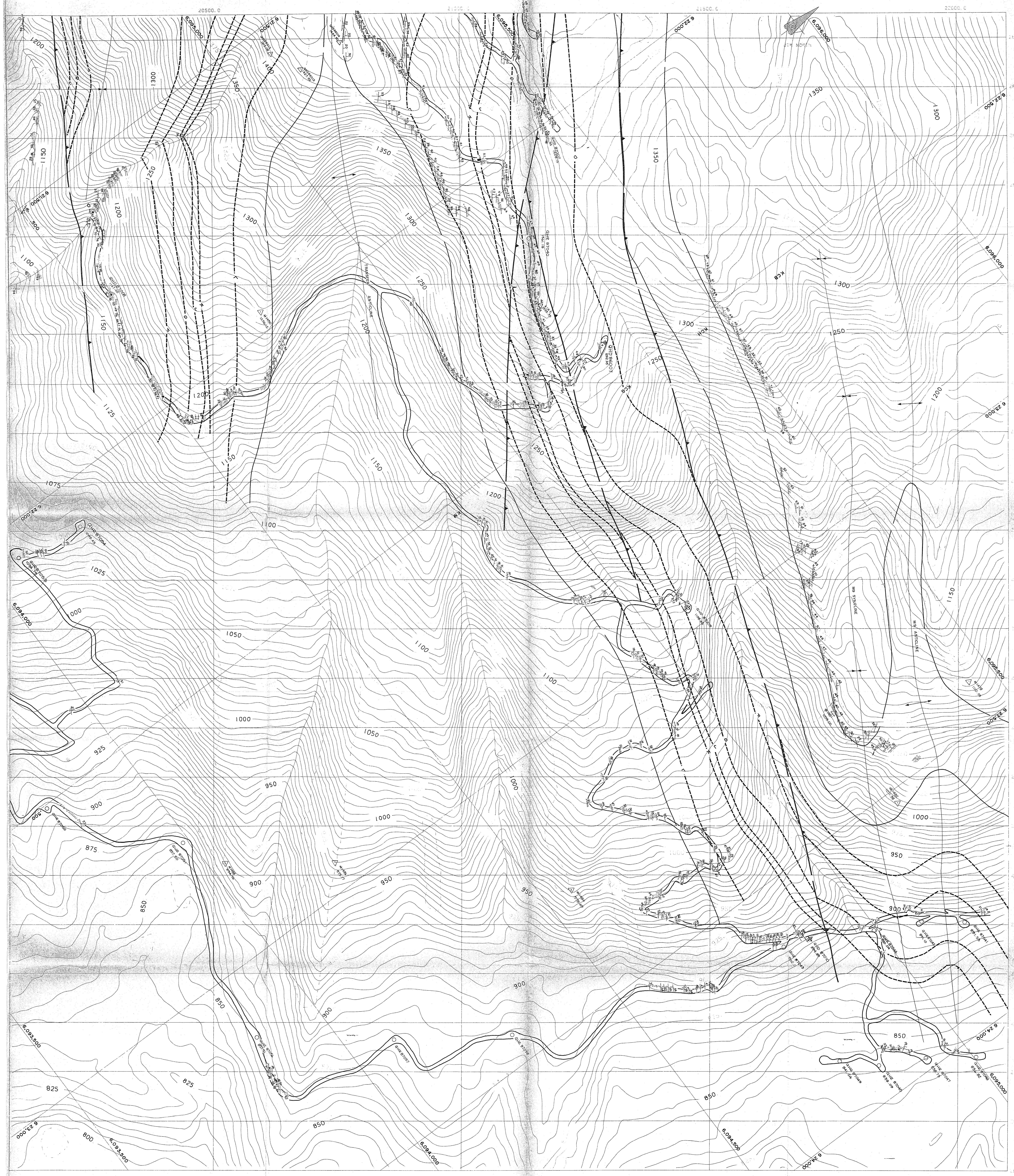
QUINETTE COAL LIMITED
PROJECT MANAGER
DENISON MINES LIMITED
COAL DIVISION

AREA: **TRANSFER** CATEGORY: **GEOLOGY**

DRAWING TITLE:
TRANSFER AREA GEOLOGY

SHEET 1

SCALE: 1:2500 DRAWING FILE: 87-903-20-001



LEGEND

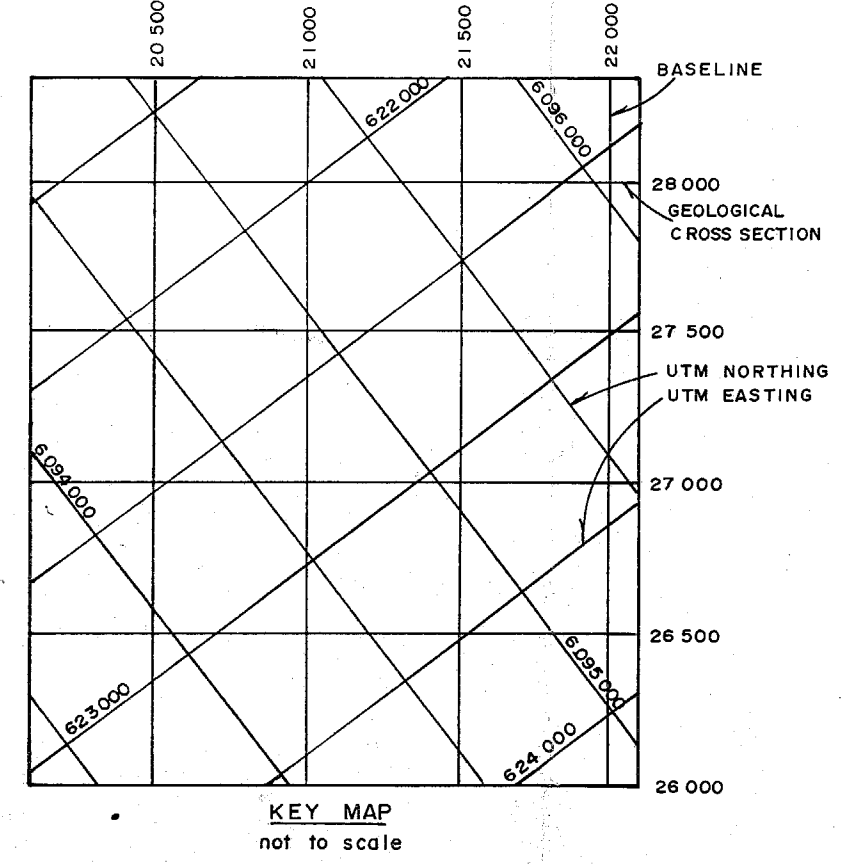
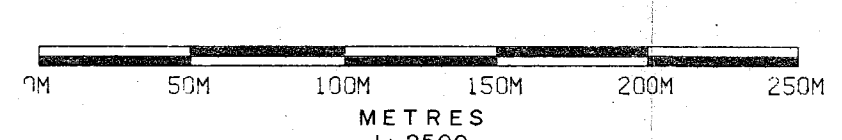
- TREELINE
- == ROADS
- TRENCH
- ROTARY DRILL HOLE
- ⊕ DIAMOND DRILL HOLE
- ▲ THRUST FAULT
- ↕ ANTICLINE
- ↖ SYNGLINE
- GEOLOGIC CONTACT
- COAL SEAM OUTCROP
- △ CONTROL POINT W. ELEVATION
- STRIKE & DIP - BEDDING
- STRIKE & DIP - COAL SEAM
- STRIKE & DIP - FAULT PLANE

GEOLOGIC FORMATIONS

- KS SHAFTSBURY
- KCB BOULDER CREEK
- KCH HULCROSS
- KCG GATES
- KM MOOSEBAR
- KG GETHING
- KCD CADOMIN

LITHOLOGIC SYMBOLS

- CONGLOMERATE
- SANDSTONE
- SILTSTONE (Sandy Shale)
- CLAYSTONE (Shale)
- COAL



739

1	21	2007	GEOLOGY UPDATE	K.J.V.	D.J.	D.J.
0	10	1997	ORIGINAL DRAFT	R.L.R.	H.W.	
REV.	NO.	DATE	REVISION DESCRIPTION	DRN.	QPS.	APP.

QUINTETTE COAL LIMITED
 PROJECT MANAGER
 DENISON MINES LIMITED
 CARL DIVISION

AREA: **TRANSFER** CATEGORY: **GEOLOGY**

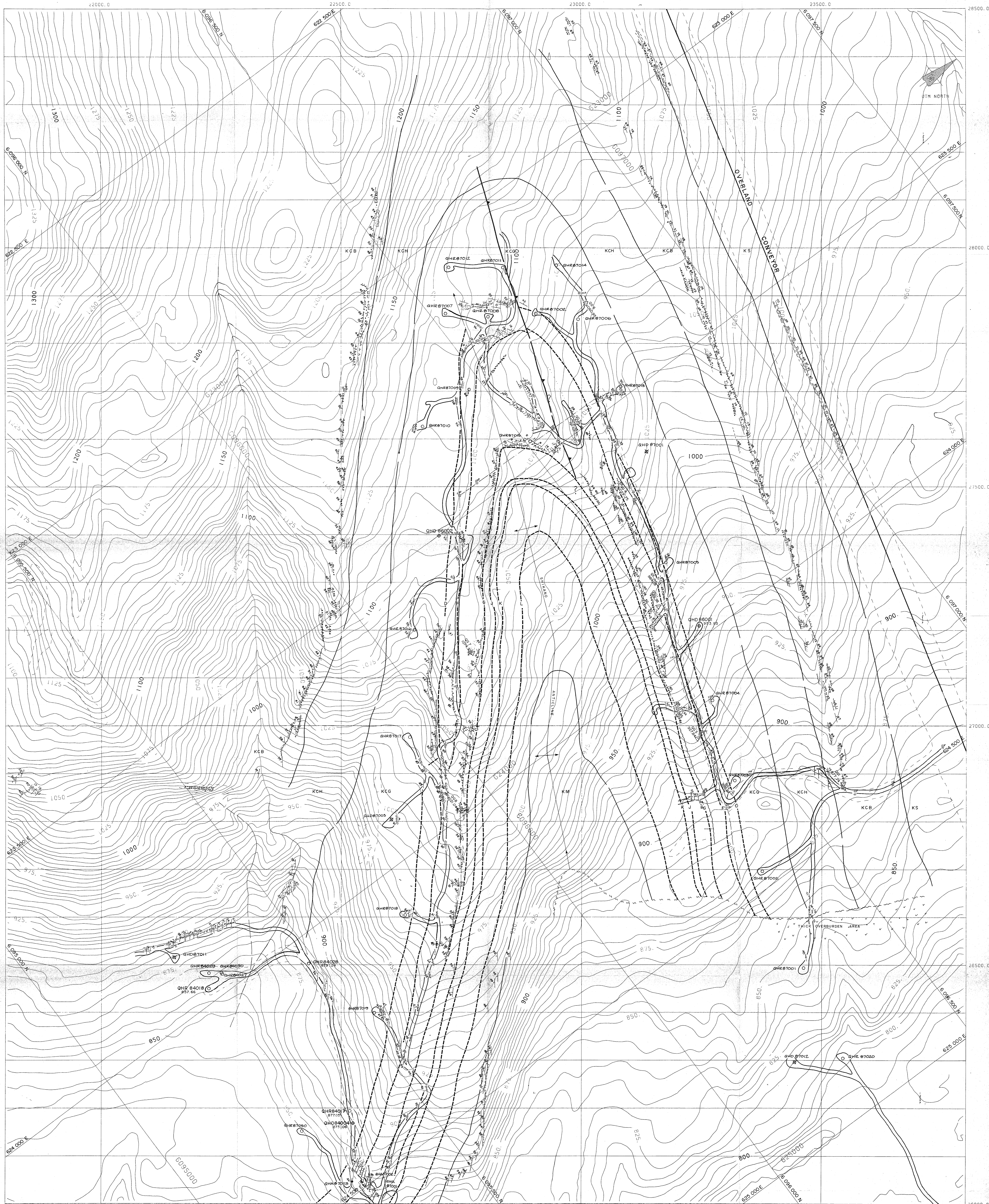
DRAWING TITLE
**TRANSFER AREA
 GEOLOGY**

SHEET **2**
 SCALE: 1:2500 DRAWING FILE: 87-903-20-002

Do not film
this section.

Section 1.2.2

Grizzly Area



LITHOLOGIC SYMBOLS

- CONGLOMERATE
- SANDSTONE
- SILTSTONE (Sandy Shale)
- CLAYSTONE (Shale)
- COAL

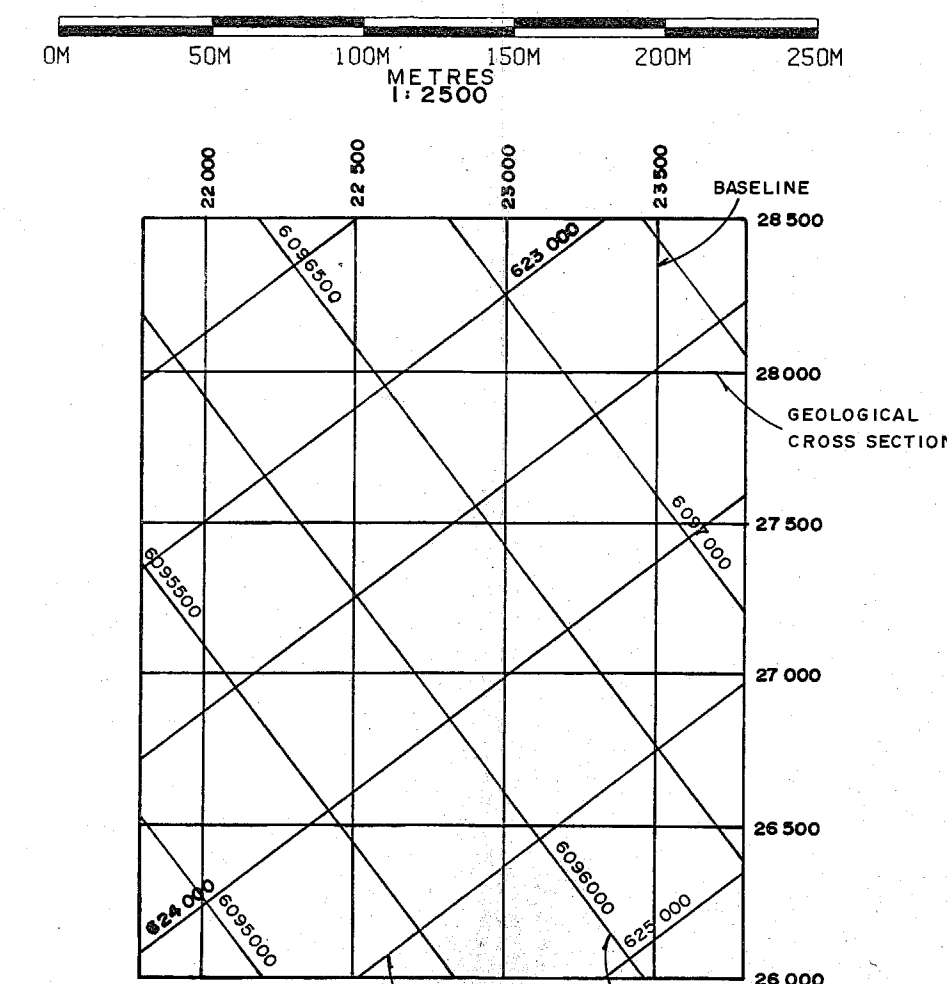
GEOLOGIC FORMATIONS

- KS SHAFTSBURY
- KCB BOULDER CREEK
- KCH HULCROSS
- KCG GATES
- KM MOOSEBAR
- KG GETHING
- KCD CADOMIN

- 4466 975.17 CONTROL POINT w. ELEVATION
- 35 STRIKE & DIP - BEDDING
- 35 STRIKE & DIP - COAL SEAM
- 80 STRIKE & DIP - FAULT PLANE

LEGEND

- TREELINE
- ROADS
- TRENCH
- ROTARY DRILL HOLE
- DIAMOND DRILL HOLE
- THRUST FAULT
- ANTICLINE
- SYNCLINE
- GEOLOGIC CONTACT
- COAL SEAM OUTCROP



739

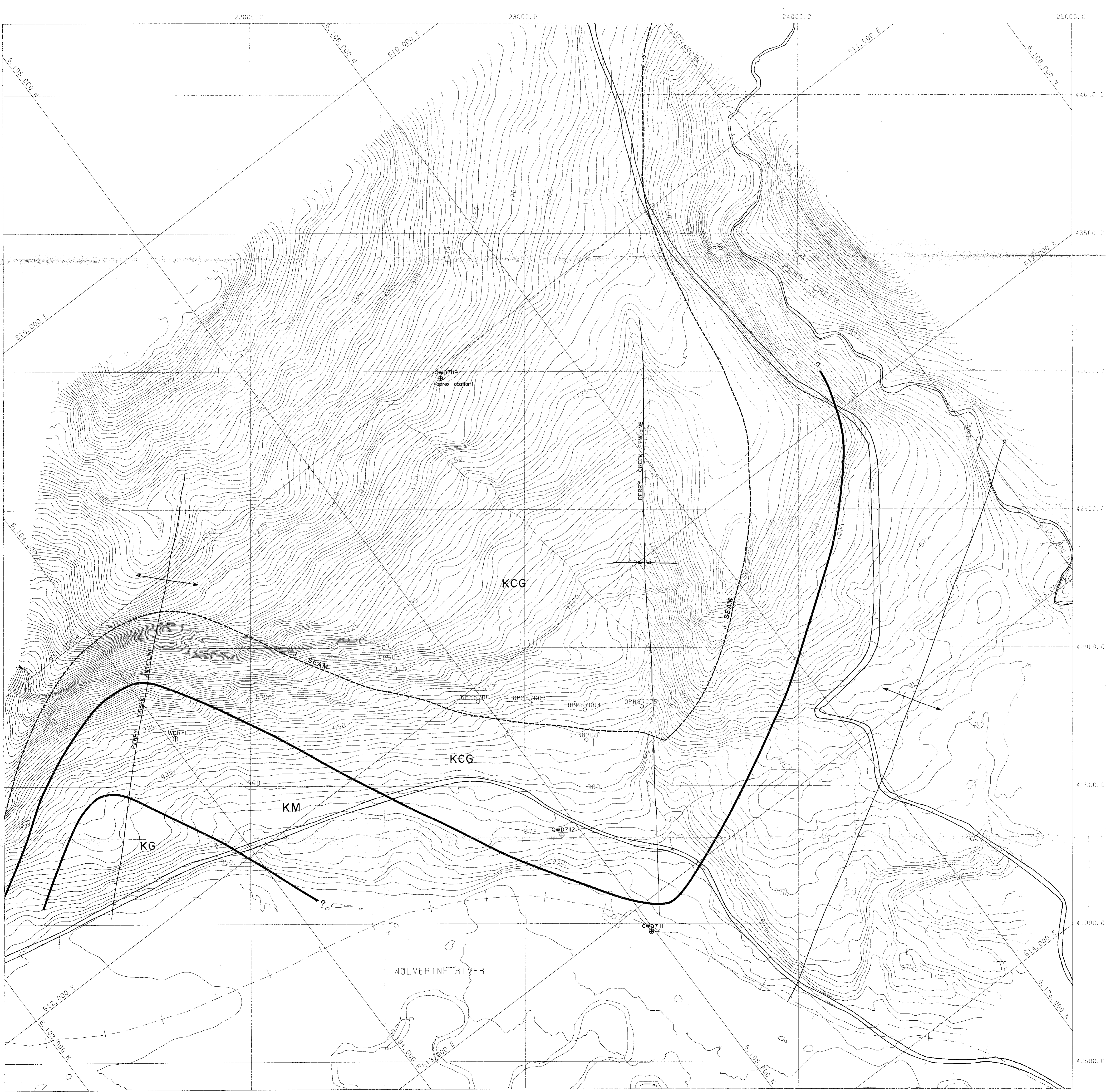
1	31	12	87	GEOLOGY UPDATE	KJV	JHP	DJ
0	05	12	96	ORIGINAL DRAFT	KJV	I.K.	G.P.P.
REV.	D	M	Y	REVISION DESCRIPTION	DRN.	DES.	APP.
<p>QUINTETTE COAL LIMITED PROJECT MANAGER DENISON MINES LIMITED COAL DIVISION</p>							
AREA	GRIZZLY	CATEGORY	TOPOGRAPHY				
DRAWING TITLE							
GRIZZLY AREA GEOLOGY							
SCALE	1:2500			DRAWING FILE	87-905-20-001		

Do not
film this
section.

Appendix 1

Section 1.2.3

Perry Creek Area



LEGEND

- ROAD
- ROTARY DRILL HOLE
- CORE DRILL HOLE
- THRUST FAULT
- SYNCLINE
- ANTICLINE
- STRIKE & DIP (ROCK-COAL)
- GEOLOGIC CONTACT
- COAL SEAM OUTCROP (SEAM TOP)

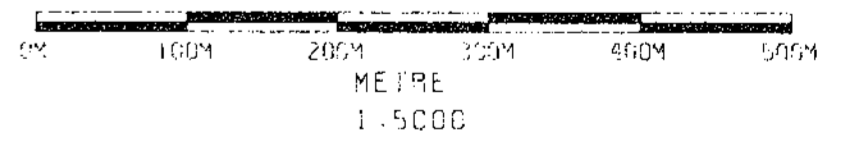
LITHOLOGIC FORMATIONS

- CONGLOMERATE
- SANDSTONE
- SANDY SHALE (SILTSTONE)
- SHALE (CLAYSTONE)
- CARBONACEOUS SHALE
- COAL

GEOLOGIC FORMATIONS

- KS** SHAFTSBURY
- KCB** BOULDER CREEK
- KCH** HULLCROSS
- KCG** GATES
- KM** MOOSEBAR
- KG** GETTING
- KCD** CADOMIN
- JKM** MINNES

TOPOGRAPHY IS A COMPILED FROM
 1:2500 MAP SHEETS 110 K10 (1971)
 1:5000 MAP SHEETS 732 733 732 733 (1976)



739					
1	24/08/88	INTERPRETIVE GEOLOGY	TW	DJ	DJ
0	22/08/88	COMPUTER DRAFT		DL	DJ
REV.	DATE	DESCRIPTION	DRN.	DES.	APP.

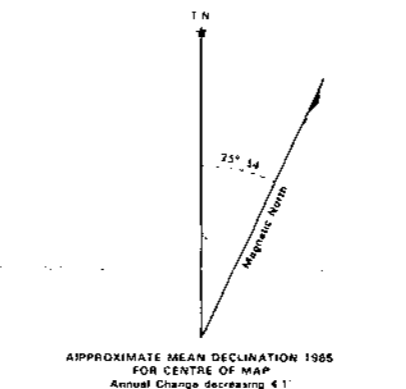
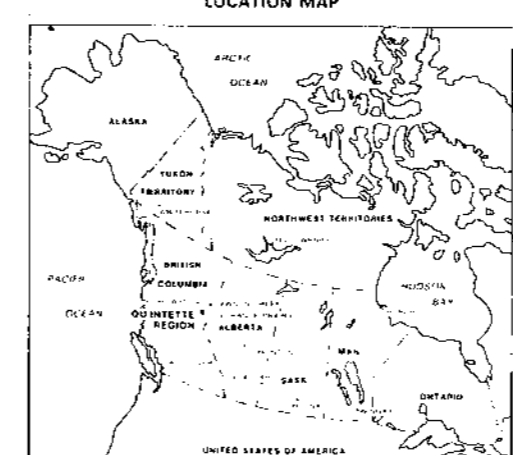
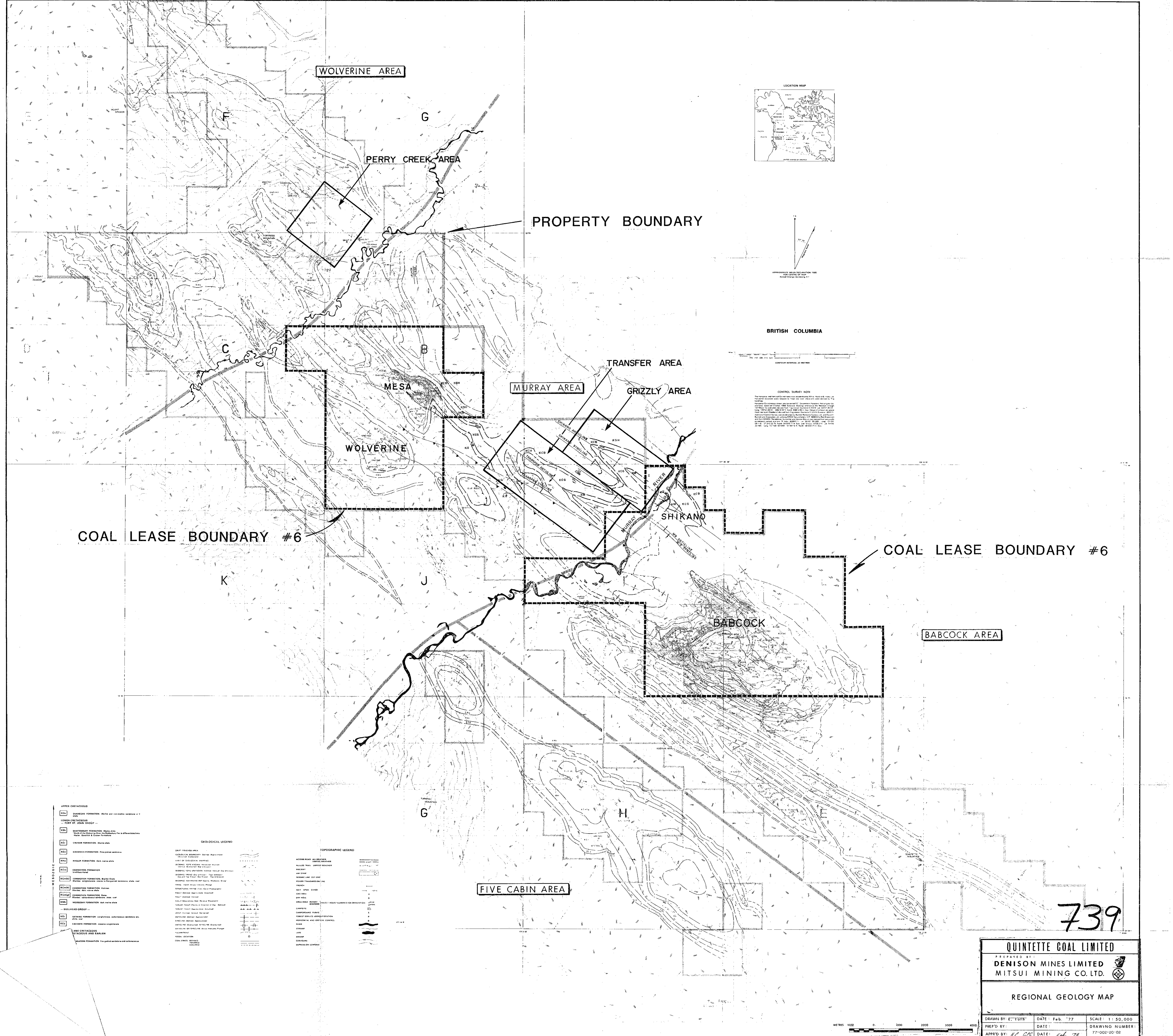
QUINTETTE COAL LIMITED
 PROJECT MANAGER
DENISON MINES LIMITED
 COAL DIVISION

AREA: PERRY CREEK CATEGORY: TOPOGRAPHY

DRAWING TITLE: **PERRY CREEK AREA GEOLOGY**

SCALE: 1:5000 DRAWING FILE: 88-906-20-001 REV: 1

Appendix 1
Section 1.2.4
Regional Geology Map



BRITISH COLUMBIA

CONTROL SURVEY NOTE
 This map was prepared from a control survey conducted by the British Columbia Department of Mines and Geology in 1977. The control survey was conducted in accordance with the requirements of the Survey Act, R.S.B.C. 1977, Chapter 247. The control survey was conducted by the British Columbia Department of Mines and Geology in 1977. The control survey was conducted in accordance with the requirements of the Survey Act, R.S.B.C. 1977, Chapter 247.

COAL LEASE BOUNDARY #6

COAL LEASE BOUNDARY #6

739

MESOPLEISTOCENE

U1	UPPER CRETACEOUS
U2	UPPER CRETACEOUS
U3	UPPER CRETACEOUS
U4	UPPER CRETACEOUS
U5	UPPER CRETACEOUS
U6	UPPER CRETACEOUS
U7	UPPER CRETACEOUS
U8	UPPER CRETACEOUS
U9	UPPER CRETACEOUS
U10	UPPER CRETACEOUS
U11	UPPER CRETACEOUS
U12	UPPER CRETACEOUS
U13	UPPER CRETACEOUS
U14	UPPER CRETACEOUS
U15	UPPER CRETACEOUS
U16	UPPER CRETACEOUS
U17	UPPER CRETACEOUS
U18	UPPER CRETACEOUS
U19	UPPER CRETACEOUS
U20	UPPER CRETACEOUS
U21	UPPER CRETACEOUS
U22	UPPER CRETACEOUS
U23	UPPER CRETACEOUS
U24	UPPER CRETACEOUS
U25	UPPER CRETACEOUS
U26	UPPER CRETACEOUS
U27	UPPER CRETACEOUS
U28	UPPER CRETACEOUS
U29	UPPER CRETACEOUS
U30	UPPER CRETACEOUS
U31	UPPER CRETACEOUS
U32	UPPER CRETACEOUS
U33	UPPER CRETACEOUS
U34	UPPER CRETACEOUS
U35	UPPER CRETACEOUS
U36	UPPER CRETACEOUS
U37	UPPER CRETACEOUS
U38	UPPER CRETACEOUS
U39	UPPER CRETACEOUS
U40	UPPER CRETACEOUS
U41	UPPER CRETACEOUS
U42	UPPER CRETACEOUS
U43	UPPER CRETACEOUS
U44	UPPER CRETACEOUS
U45	UPPER CRETACEOUS
U46	UPPER CRETACEOUS
U47	UPPER CRETACEOUS
U48	UPPER CRETACEOUS
U49	UPPER CRETACEOUS
U50	UPPER CRETACEOUS
U51	UPPER CRETACEOUS
U52	UPPER CRETACEOUS
U53	UPPER CRETACEOUS
U54	UPPER CRETACEOUS
U55	UPPER CRETACEOUS
U56	UPPER CRETACEOUS
U57	UPPER CRETACEOUS
U58	UPPER CRETACEOUS
U59	UPPER CRETACEOUS
U60	UPPER CRETACEOUS
U61	UPPER CRETACEOUS
U62	UPPER CRETACEOUS
U63	UPPER CRETACEOUS
U64	UPPER CRETACEOUS
U65	UPPER CRETACEOUS
U66	UPPER CRETACEOUS
U67	UPPER CRETACEOUS
U68	UPPER CRETACEOUS
U69	UPPER CRETACEOUS
U70	UPPER CRETACEOUS
U71	UPPER CRETACEOUS
U72	UPPER CRETACEOUS
U73	UPPER CRETACEOUS
U74	UPPER CRETACEOUS
U75	UPPER CRETACEOUS
U76	UPPER CRETACEOUS
U77	UPPER CRETACEOUS
U78	UPPER CRETACEOUS
U79	UPPER CRETACEOUS
U80	UPPER CRETACEOUS
U81	UPPER CRETACEOUS
U82	UPPER CRETACEOUS
U83	UPPER CRETACEOUS
U84	UPPER CRETACEOUS
U85	UPPER CRETACEOUS
U86	UPPER CRETACEOUS
U87	UPPER CRETACEOUS
U88	UPPER CRETACEOUS
U89	UPPER CRETACEOUS
U90	UPPER CRETACEOUS
U91	UPPER CRETACEOUS
U92	UPPER CRETACEOUS
U93	UPPER CRETACEOUS
U94	UPPER CRETACEOUS
U95	UPPER CRETACEOUS
U96	UPPER CRETACEOUS
U97	UPPER CRETACEOUS
U98	UPPER CRETACEOUS
U99	UPPER CRETACEOUS
U100	UPPER CRETACEOUS

GEOLOGICAL LEGEND

U1	UPPER CRETACEOUS
U2	UPPER CRETACEOUS
U3	UPPER CRETACEOUS
U4	UPPER CRETACEOUS
U5	UPPER CRETACEOUS
U6	UPPER CRETACEOUS
U7	UPPER CRETACEOUS
U8	UPPER CRETACEOUS
U9	UPPER CRETACEOUS
U10	UPPER CRETACEOUS
U11	UPPER CRETACEOUS
U12	UPPER CRETACEOUS
U13	UPPER CRETACEOUS
U14	UPPER CRETACEOUS
U15	UPPER CRETACEOUS
U16	UPPER CRETACEOUS
U17	UPPER CRETACEOUS
U18	UPPER CRETACEOUS
U19	UPPER CRETACEOUS
U20	UPPER CRETACEOUS
U21	UPPER CRETACEOUS
U22	UPPER CRETACEOUS
U23	UPPER CRETACEOUS
U24	UPPER CRETACEOUS
U25	UPPER CRETACEOUS
U26	UPPER CRETACEOUS
U27	UPPER CRETACEOUS
U28	UPPER CRETACEOUS
U29	UPPER CRETACEOUS
U30	UPPER CRETACEOUS
U31	UPPER CRETACEOUS
U32	UPPER CRETACEOUS
U33	UPPER CRETACEOUS
U34	UPPER CRETACEOUS
U35	UPPER CRETACEOUS
U36	UPPER CRETACEOUS
U37	UPPER CRETACEOUS
U38	UPPER CRETACEOUS
U39	UPPER CRETACEOUS
U40	UPPER CRETACEOUS
U41	UPPER CRETACEOUS
U42	UPPER CRETACEOUS
U43	UPPER CRETACEOUS
U44	UPPER CRETACEOUS
U45	UPPER CRETACEOUS
U46	UPPER CRETACEOUS
U47	UPPER CRETACEOUS
U48	UPPER CRETACEOUS
U49	UPPER CRETACEOUS
U50	UPPER CRETACEOUS
U51	UPPER CRETACEOUS
U52	UPPER CRETACEOUS
U53	UPPER CRETACEOUS
U54	UPPER CRETACEOUS
U55	UPPER CRETACEOUS
U56	UPPER CRETACEOUS
U57	UPPER CRETACEOUS
U58	UPPER CRETACEOUS
U59	UPPER CRETACEOUS
U60	UPPER CRETACEOUS
U61	UPPER CRETACEOUS
U62	UPPER CRETACEOUS
U63	UPPER CRETACEOUS
U64	UPPER CRETACEOUS
U65	UPPER CRETACEOUS
U66	UPPER CRETACEOUS
U67	UPPER CRETACEOUS
U68	UPPER CRETACEOUS
U69	UPPER CRETACEOUS
U70	UPPER CRETACEOUS
U71	UPPER CRETACEOUS
U72	UPPER CRETACEOUS
U73	UPPER CRETACEOUS
U74	UPPER CRETACEOUS
U75	UPPER CRETACEOUS
U76	UPPER CRETACEOUS
U77	UPPER CRETACEOUS
U78	UPPER CRETACEOUS
U79	UPPER CRETACEOUS
U80	UPPER CRETACEOUS
U81	UPPER CRETACEOUS
U82	UPPER CRETACEOUS
U83	UPPER CRETACEOUS
U84	UPPER CRETACEOUS
U85	UPPER CRETACEOUS
U86	UPPER CRETACEOUS
U87	UPPER CRETACEOUS
U88	UPPER CRETACEOUS
U89	UPPER CRETACEOUS
U90	UPPER CRETACEOUS
U91	UPPER CRETACEOUS
U92	UPPER CRETACEOUS
U93	UPPER CRETACEOUS
U94	UPPER CRETACEOUS
U95	UPPER CRETACEOUS
U96	UPPER CRETACEOUS
U97	UPPER CRETACEOUS
U98	UPPER CRETACEOUS
U99	UPPER CRETACEOUS
U100	UPPER CRETACEOUS

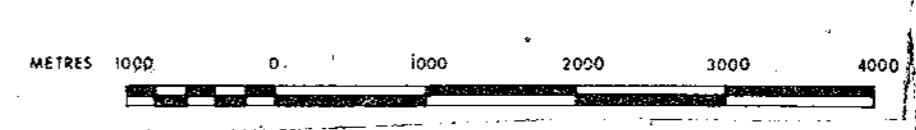
TOPOGRAPHIC LEGEND

1	100 METRE BENCH MARK
2	200 METRE BENCH MARK
3	300 METRE BENCH MARK
4	400 METRE BENCH MARK
5	500 METRE BENCH MARK
6	600 METRE BENCH MARK
7	700 METRE BENCH MARK
8	800 METRE BENCH MARK
9	900 METRE BENCH MARK
10	1000 METRE BENCH MARK
11	1100 METRE BENCH MARK
12	1200 METRE BENCH MARK
13	1300 METRE BENCH MARK
14	1400 METRE BENCH MARK
15	1500 METRE BENCH MARK
16	1600 METRE BENCH MARK
17	1700 METRE BENCH MARK
18	1800 METRE BENCH MARK
19	1900 METRE BENCH MARK
20	2000 METRE BENCH MARK
21	2100 METRE BENCH MARK
22	2200 METRE BENCH MARK
23	2300 METRE BENCH MARK
24	2400 METRE BENCH MARK
25	2500 METRE BENCH MARK
26	2600 METRE BENCH MARK
27	2700 METRE BENCH MARK
28	2800 METRE BENCH MARK
29	2900 METRE BENCH MARK
30	3000 METRE BENCH MARK
31	3100 METRE BENCH MARK
32	3200 METRE BENCH MARK
33	3300 METRE BENCH MARK
34	3400 METRE BENCH MARK
35	3500 METRE BENCH MARK
36	3600 METRE BENCH MARK
37	3700 METRE BENCH MARK
38	3800 METRE BENCH MARK
39	3900 METRE BENCH MARK
40	4000 METRE BENCH MARK
41	4100 METRE BENCH MARK
42	4200 METRE BENCH MARK
43	4300 METRE BENCH MARK
44	4400 METRE BENCH MARK
45	4500 METRE BENCH MARK
46	4600 METRE BENCH MARK
47	4700 METRE BENCH MARK
48	4800 METRE BENCH MARK
49	4900 METRE BENCH MARK
50	5000 METRE BENCH MARK
51	5100 METRE BENCH MARK
52	5200 METRE BENCH MARK
53	5300 METRE BENCH MARK
54	5400 METRE BENCH MARK
55	5500 METRE BENCH MARK
56	5600 METRE BENCH MARK
57	5700 METRE BENCH MARK
58	5800 METRE BENCH MARK
59	5900 METRE BENCH MARK
60	6000 METRE BENCH MARK
61	6100 METRE BENCH MARK
62	6200 METRE BENCH MARK
63	6300 METRE BENCH MARK
64	6400 METRE BENCH MARK
65	6500 METRE BENCH MARK
66	6600 METRE BENCH MARK
67	6700 METRE BENCH MARK
68	6800 METRE BENCH MARK
69	6900 METRE BENCH MARK
70	7000 METRE BENCH MARK
71	7100 METRE BENCH MARK
72	7200 METRE BENCH MARK
73	7300 METRE BENCH MARK
74	7400 METRE BENCH MARK
75	7500 METRE BENCH MARK
76	7600 METRE BENCH MARK
77	7700 METRE BENCH MARK
78	7800 METRE BENCH MARK
79	7900 METRE BENCH MARK
80	8000 METRE BENCH MARK
81	8100 METRE BENCH MARK
82	8200 METRE BENCH MARK
83	8300 METRE BENCH MARK
84	8400 METRE BENCH MARK
85	8500 METRE BENCH MARK
86	8600 METRE BENCH MARK
87	8700 METRE BENCH MARK
88	8800 METRE BENCH MARK
89	8900 METRE BENCH MARK
90	9000 METRE BENCH MARK
91	9100 METRE BENCH MARK
92	9200 METRE BENCH MARK
93	9300 METRE BENCH MARK
94	9400 METRE BENCH MARK
95	9500 METRE BENCH MARK
96	9600 METRE BENCH MARK
97	9700 METRE BENCH MARK
98	9800 METRE BENCH MARK
99	9900 METRE BENCH MARK
100	10000 METRE BENCH MARK

QUINTETTE COAL LIMITED
 PREPARED BY:
DENISON MINES LIMITED
MITSUI MINING CO. LTD.

REGIONAL GEOLOGY MAP

DRAWN BY: E.T.G.T.	DATE: Feb. '77	SCALE: 1:50,000
PREP'D BY:	DATE:	DRAWING NUMBER:
APPRO'D BY: H.P. G.P.	DATE: Feb. '78	77-002-20-02



Do not film
this
section

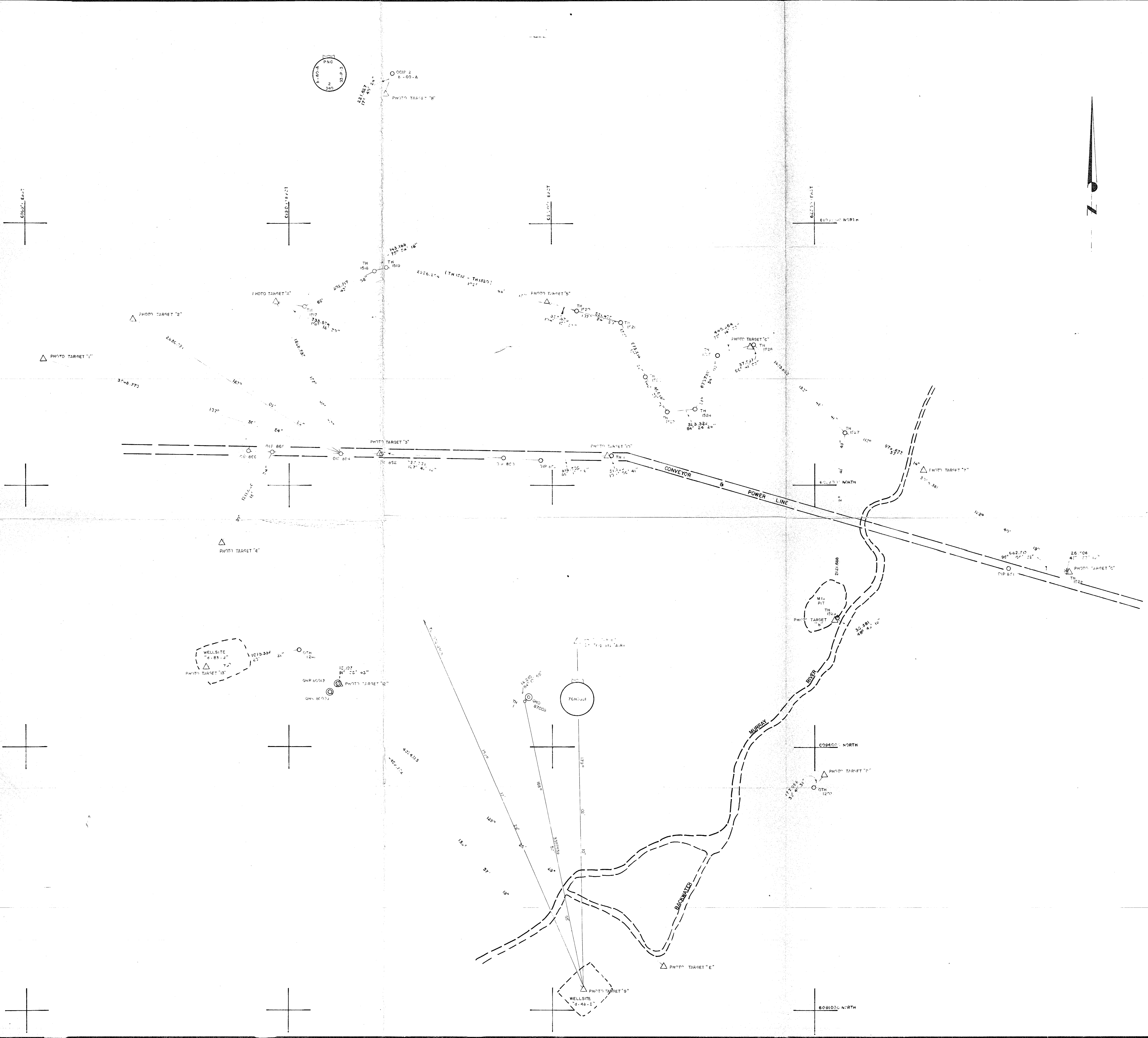
Appendix 1
Section 1.3
Survey Maps

Do not
film this
section.

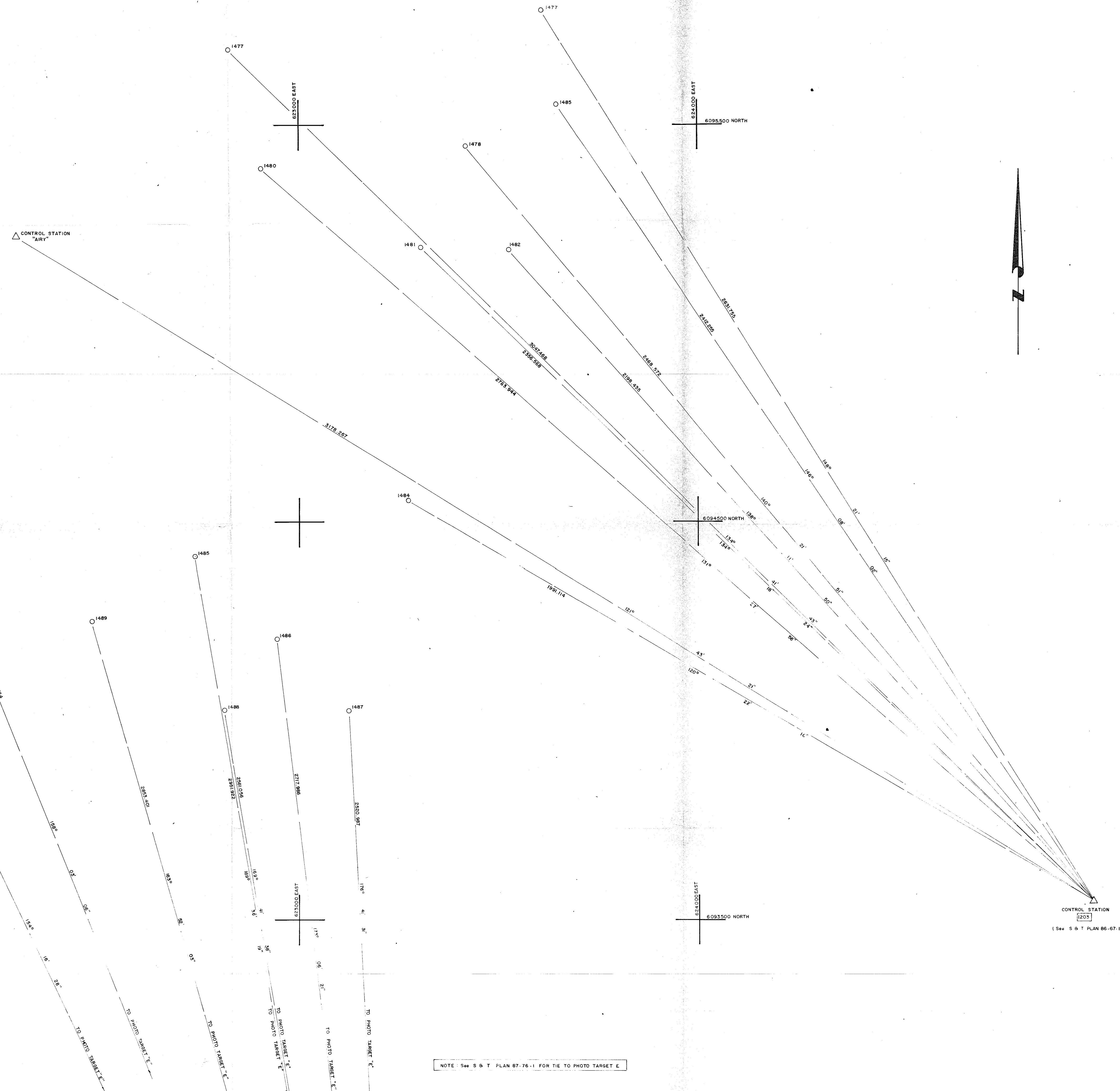
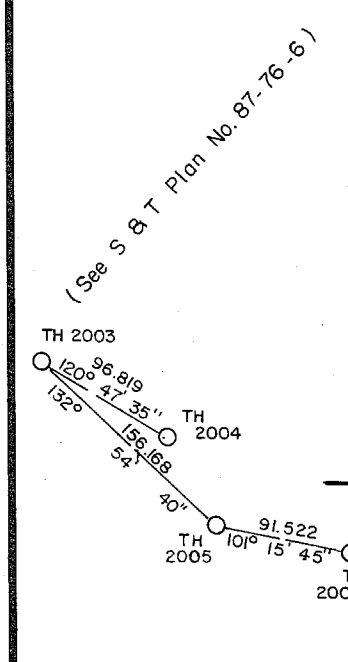
Appendix 1

Section 1.3.1

Transfer and Grizzly Areas



ST-BLES & TRYON TAG No.	PHOTO TARGET OR CONTROL POINT No.	UTM CO-ORDINATES		ELEVATION
		NORTHING	EASTING	
1517		6095061.27	62175.16	1174.96
1518		6095475.03	619580.49	1195.61
1519		6095509.33	620118.37	1112.07
1520		6095716.51	620200.30	1173.69
1521		6095809.56	620787.31	1190.53
1522		6096348.73	620069.25	1102.43
1523		6097243.66	620310.15	1117.96
1524		6097881.33	620634.35	978.27
1525		6098305.16	620881.04	979.16
1526		6098617.44	621070.96	911.88
1527		6099101.00	621300.61	926.99
1528		6099587.01	621590.02	990.78
1529		6100000.22	621827.75	1173.79
1530		6100508.48	622061.93	1102.07
1531		6101016.77	622291.68	1102.07
1532		6101524.23	622521.07	1176.57
1533		6102031.11	622751.31	1107.51
1534		6102538.21	622981.55	1107.51
1535		6103045.31	623211.79	1107.51
1536		6103552.41	623442.03	1107.51
1537		6104059.51	623672.27	1107.51
1538		6104566.61	623902.51	1107.51
1539		6105073.71	624132.75	1107.51
1540		6105580.81	624363.00	1107.51
1541		6106087.91	624593.24	1107.51
1542		6106595.01	624823.48	1107.51
1543		6107102.11	625053.72	1107.51
1544		6107609.21	625283.96	1107.51
1545		6108116.31	625514.20	1107.51
1546		6108623.41	625744.44	1107.51
1547		6109130.51	625974.68	1107.51
1548		6109637.61	626204.92	1107.51
1549		6110144.71	626435.16	1107.51
1550		6110651.81	626665.40	1107.51
1551		6111158.91	626895.64	1107.51
1552		6111666.01	627125.88	1107.51
1553		6112173.11	627356.12	1107.51
1554		6112680.21	627586.36	1107.51
1555		6113187.31	627816.60	1107.51
1556		6113694.41	628046.84	1107.51
1557		6114201.51	628277.08	1107.51
1558		6114708.61	628507.32	1107.51
1559		6115215.71	628737.56	1107.51
1560		6115722.81	628967.80	1107.51
1561		6116229.91	629198.04	1107.51
1562		6116737.01	629428.28	1107.51
1563		6117244.11	629658.52	1107.51
1564		6117751.21	629888.76	1107.51
1565		6118258.31	630119.00	1107.51
1566		6118765.41	630349.24	1107.51
1567		6119272.51	630579.48	1107.51
1568		6119779.61	630809.72	1107.51
1569		6120286.71	631039.96	1107.51
1570		6120793.81	631270.20	1107.51
1571		6121300.91	631500.44	1107.51
1572		6121808.01	631730.68	1107.51
1573		6122315.11	631960.92	1107.51
1574		6122822.21	632191.16	1107.51
1575		6123329.31	632421.40	1107.51
1576		6123836.41	632651.64	1107.51
1577		6124343.51	632881.88	1107.51
1578		6124850.61	633112.12	1107.51
1579		6125357.71	633342.36	1107.51
1580		6125864.81	633572.60	1107.51
1581		6126371.91	633802.84	1107.51
1582		6126879.01	634033.08	1107.51
1583		6127386.11	634263.32	1107.51
1584		6127893.21	634493.56	1107.51
1585		6128400.31	634723.80	1107.51
1586		6128907.41	634954.04	1107.51
1587		6129414.51	635184.28	1107.51
1588		6129921.61	635414.52	1107.51
1589		6130428.71	635644.76	1107.51
1590		6130935.81	635875.00	1107.51
1591		6131442.91	636105.24	1107.51
1592		6131950.01	636335.48	1107.51
1593		6132457.11	636565.72	1107.51
1594		6132964.21	636795.96	1107.51
1595		6133471.31	637026.20	1107.51
1596		6133978.41	637256.44	1107.51
1597		6134485.51	637486.68	1107.51
1598		6134992.61	637716.92	1107.51
1599		6135499.71	637947.16	1107.51
1600		6136006.81	638177.40	1107.51
1601		6136513.91	638407.64	1107.51
1602		6137021.01	638637.88	1107.51
1603		6137528.11	638868.12	1107.51
1604		6138035.21	639098.36	1107.51
1605		6138542.31	639328.60	1107.51
1606		6139049.41	639558.84	1107.51
1607		6139556.51	639789.08	1107.51
1608		6140063.61	640019.32	1107.51
1609		6140570.71	640249.56	1107.51
1610		6141077.81	640479.80	1107.51
1611		6141584.91	640710.04	1107.51
1612		6142092.01	640940.28	1107.51
1613		6142599.11	641170.52	1107.51
1614		6143106.21	641400.76	1107.51
1615		6143613.31	641631.00	1107.51
1616		6144120.41	641861.24	1107.51
1617		6144627.51	642091.48	1107.51
1618		6145134.61	642321.72	1107.51
1619		6145641.71	642551.96	1107.51
1620		6146148.81	642782.20	1107.51
1621		6146655.91	643012.44	1107.51
1622		6147163.01	643242.68	1107.51
1623		6147670.11	643472.92	1107.51
1624		6148177.21	643703.16	1107.51
1625		6148684.31	643933.40	1107.51
1626		6149191.41	644163.64	1107.51
1627		6149698.51	644393.88	1107.51
1628		6150205.61	644624.12	1107.51
1629		6150712.71	644854.36	1107.51
1630		6151219.81	645084.60	1107.51
1631		6151726.91	645314.84	1107.51
1632		6152234.01	645545.08	1107.51
1633		6152741.11	645775.32	1107.51
1634		6153248.21	646005.56	1107.51
1635		6153755.31	646235.80	1107.51
1636		6154262.41	646466.04	1107.51
1637		6154769.51	646696.28	1107.51
1638		6155276.61	646926.52	1107.51
1639		6155783.71	647156.76	1107.51
1640		6156290.81	647387.00	1107.51
1641		6156797.91	647617.24	1107.51
1642		6157305.01	647847.48	1107.51
1643		6157812.11	648077.72	1107.51
1644		6158319.21	648307.96	1107.51
1645		6158826.31	648538.20	1107.51
1646		6159333.41	648768.44	1107.51
1647		6159840.51	648998.68	1107.51
1648		6160347.61	649228.92	1107.51
1649		6160854.71	649459.16	1107.51
1650		6161361.81	649689.40	1107.51
1651		6161868.91	649919.64	1107.51
1652		6162376.01	650149.88	1107.51
1653		6162883.11	650380.12	1107.51
1654		6163390.21	650610.36	1107.51
1655		6163897.31	650840.60	1107.51
1656		6164404.41	651070.84	1107.51
1657		6164911.51	651301.08	1107.51
1658		6165418.61	651531.32	1107.51
1659		6165925.71	651761.56	1107.51
1660		6166432.81	651991.80	1107.51
1661		6166939.91	652222.04	1107.51
1662		6167447.01	652452.28	1107.51
1663		6167954.11	652682.52	1107.51
1664		6168461.21	652912.76	1107.51
1665		6168968.31	653143.00	1107.51
1666		6169475.41	653373.24	1107.51
1667		6169982.51	653603.48	1107.51
1668		6170489.61	653833.72	1107.51
1669		6170996.71	654063.96	1107.51
1670		6171503.81	654294.20	1107.51
1671		6172010.91	654524.44	1107.51
1672		6172518.01	654754.68	1107.51
1673		6173025.11	654984.92	1107.51
1674		6173532.21	655215.16	1107.51
1675		6174039.31	655445.40	1107.51
1676		6174546.41	655675.64	1107.51
1677		6175053.51	655905.88	1107.51
1678		6175560.61	656136.12	1107.51
1679		6176067.71	656366.36	1107.51
1680		6176574.81	656596.60	1107.51
1681		6177081.91	656826.84	1107.51
1682		6177589.01	657057.08	1107.51
1683		6178096.11	657287.32	1107.51
1684		6178603.21	657517.56	1107.51
1685		6179110.31	657747.80	1107.51
1686		6179617.41	657978.04	1107.51
1687		6180124.51	658208.28	1107.51
1688		6180631.61	658438.52	1107.51
1689		6181138.71	658668.76	1107.51
1690		6181645.81	658899.00	1107.51
1691		6182152.91	659129.24	1107.51
1692		6182660.01	659359.48	1107.51
1693		6183167.11	659589.72	1107.51
1694		6183674.21	659819.96	1107.51
1695		6184181.31	660050.20	1107.51
1696		6184688.41	660280.44	1107.51
1697		6185195.51	660510.68	1107.51
1698		6185702.61	660740.92	1107.51
1699		6186209.71	660971.16	1107.51
1700		6186716.81	661201.40	1107.51
1701		6187223.91	661431.64	1107.51
1702		6187731.01	661661.88	1107.51
1703		6188238.11	661892.12	1107.51
1704		6188745.21	662122.36	1107.51
1705		6189252.31	662352.60	1107.51
1706		6189759.41	662582.84	1107.51
1707		6190266.51	662813.08	1107.51
1708		6190773.61	663043.32	1107.51
1709		6191280.71	663273.56	1107.51
1710		6191787.81	663503.80	1107.51
1711		6192294.91	663734.04	1107.51
1712		6192802.01	663964.28	1107.51
1713		6193309.11	664194.52	1107.51
1714		6193816.21	664424.76	1107.51
1715		6194323.31	664655.00	1107.51
1716		6194830.41	664885.24	1107.51
1717		6195337.51	665115.48	1107.51
1718		6195844.61	665345.72	1107.51
1719		6196351.71	665575.96	1107.51
1720		6196858.81	665806.20	1107.51
1721		6197365.91	666036.44	1107.51
1722		6197873.01	66	



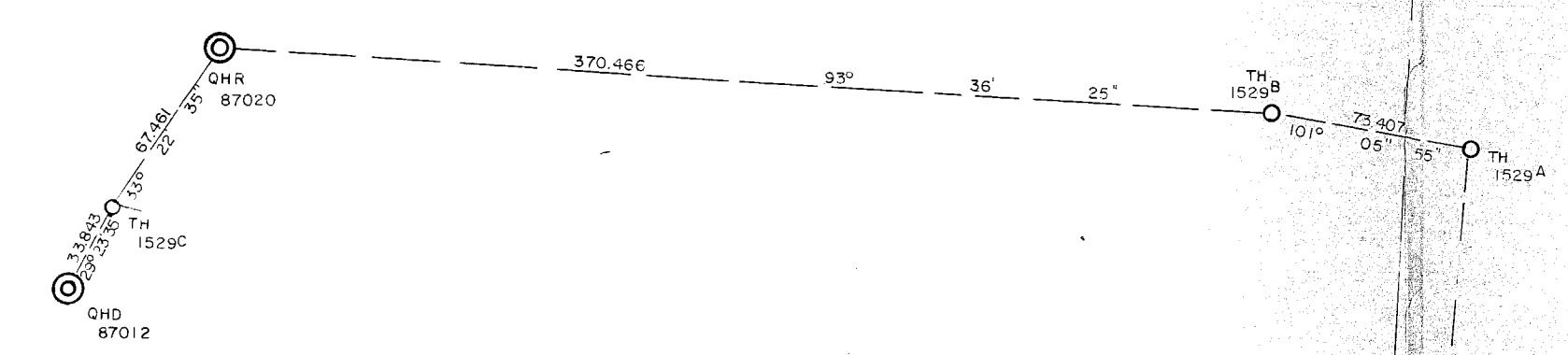
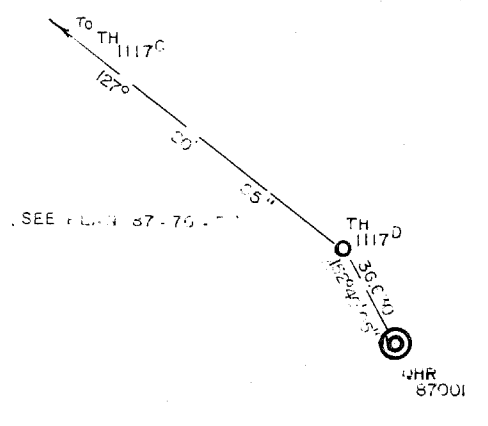
SURVEY STATION	STABLES & TRYON TAG No.	UTM CO-ORDINATES		ELEVATIONS	
		NORTHING	EASTING	TOP OF IRON BAR	GROUND
"AIRY"		6095218.97	622288.57	1353.95	1353.9
	1203	6093548.48	624991.03	780.03	
PHOTO TARGET "E"		6091511.53	623269.74	775.70	
	1477	6095788.12	623610.72	1038.44	1038.3
	1478	6095448.88	623416.88	1110.08	1110.0
	1479	6095691.08	622825.51	1232.95	1232.9
	1480	6095391.25	622905.63	1181.50	1181.5
	1481	6095193.96	623305.24	1059.00	1059.0
	1482	6095186.72	623526.14	1011.38	1011.4
	1483	6095550.78	623647.26	1003.43	1003.3
	1484	6094554.83	623273.76	979.49	979.5
	1485	6094413.97	622737.32	1053.60	1053.6
	1486	6094208.92	622943.60	975.17	975.2
	1487	6094027.45	623124.32	916.49	916.5
	1488	6094030.40	622811.71	894.76	894.8
	1489	6094251.99	622477.18	1028.03	1028.0
	1490	6094761.06	621960.25	1256.12	
	1491	6093948.86	622095.39	1014.55	1014.5
	2003	6095577.28	621753.09	1326.52	
	2004	6095527.74	621836.23	1326.88	
	2005	6095471.00	621867.42	1342.41	
	2006	6095453.13	621957.14	1338.63	
QHD 87907		6095442.39	622018.43	1329.15	

SURVEYED: June 2nd 1987

T.J. Tryon
T.J. TRYON B.C.L.S.

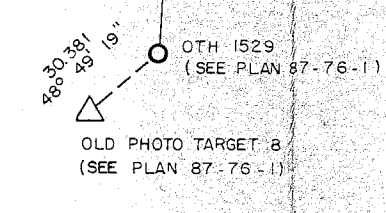
NOTE: See S & T PLAN 87-76-1 FOR TIE TO PHOTO TARGET E.

Plotted Traverse Stations 2003, 2004, 2005, 2006 & Drill Hole QHD 87007 Added Coordinates		12 / 08 / 87
No.	REVISIONS	DATE
QUINETTE COAL LIMITED		
739		
PLAN SHOWING CONTROL POINTS TRANSFER AREA		
SCALE 1:5000		
0 50 100 150 METRES		
STABLES, TRYON AND ASSOCIATES		FILE No. 87-76-2
B.C. LAND SURVEYORS		DAWSON CREEK, B.C.



625000 East
6096000 North

625000 East
6095500 North



625000 East
6095500 North

625000 East
6095000 North

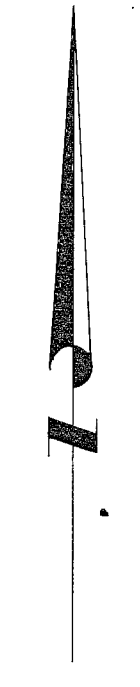


PHOTO TARGET DRILL HOLE OR CONTROL POINT TAG No.	U.T.M. CO-ORDINATES		ELEVATIONS	
	NORTHING	EASTING	TOP OF SPIKE OR CASING	GROUND
Photo Target B	6095472.32	625334.91	773.71	
I529	6095492.32	625257.79	773.70	
I529A	6096220.01	625321.41	767.01	
I529B	6096234.14	625249.40	785.58	
QHR 87020	6096256.36	624879.72	797.81	
I529C	6096200.04	624842.62	819.52	
QHD 87012	6096170.57	624826.02	818.91	

Surveyed July 17th, 1967
T.J. Tryon
T.J. TRYON B.C.L.S.

1	Added Tie To QHD 87012	4 / 9 / 87
No.	REVISIONS	DATE
QUINTETTE COAL LIMITED		
739		
PLAN SHOWING TIE TO DRILL HOLE VICINITY M19 PIT		
SCALE 1:2500 25 0 25 50 100 METRES		
STABLES, TRYON AND ASSOCIATES		FILE No. 87-76-4
B.C. LAND SURVEYORS		DAWSON CREEK, B.C.

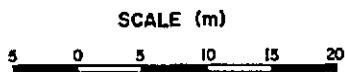
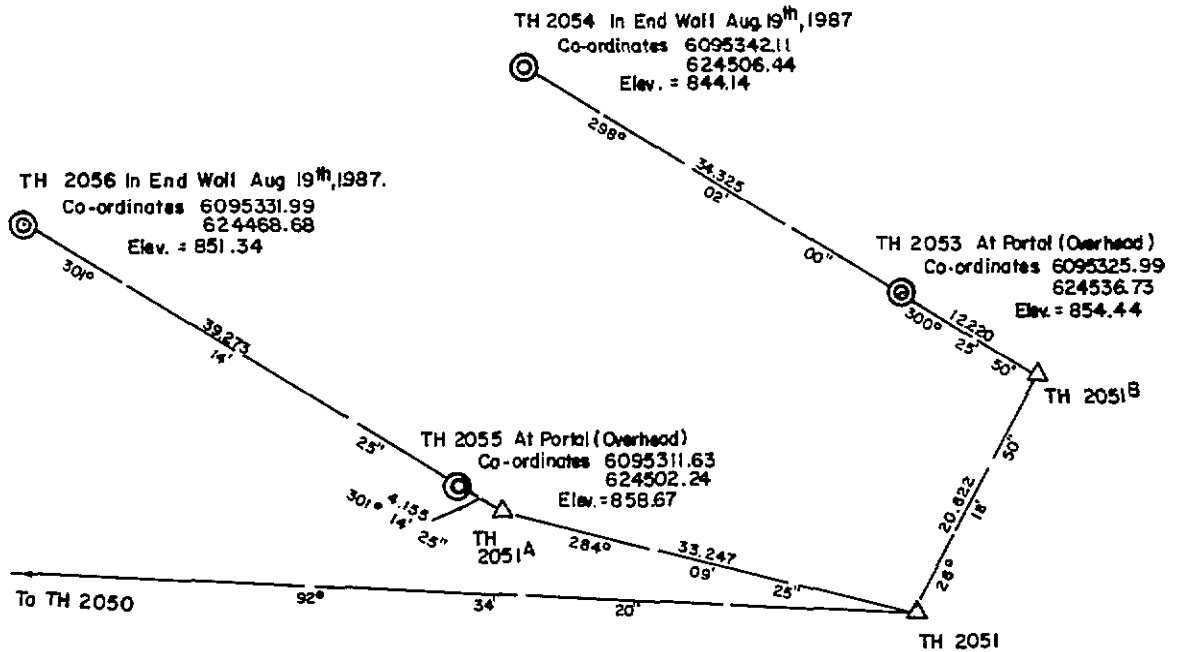
Do not
film this
section

Appendix 1

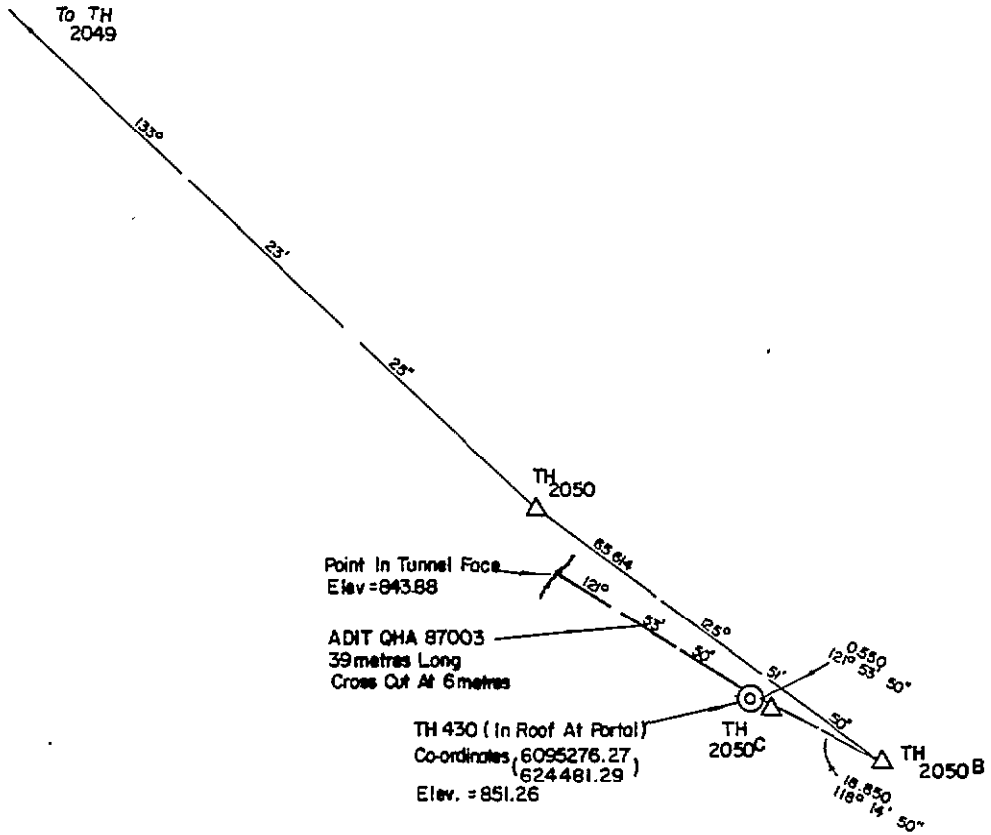
Section 1.3.2

Adit Locations

ADITS QHA 87001 AND QHA 87002



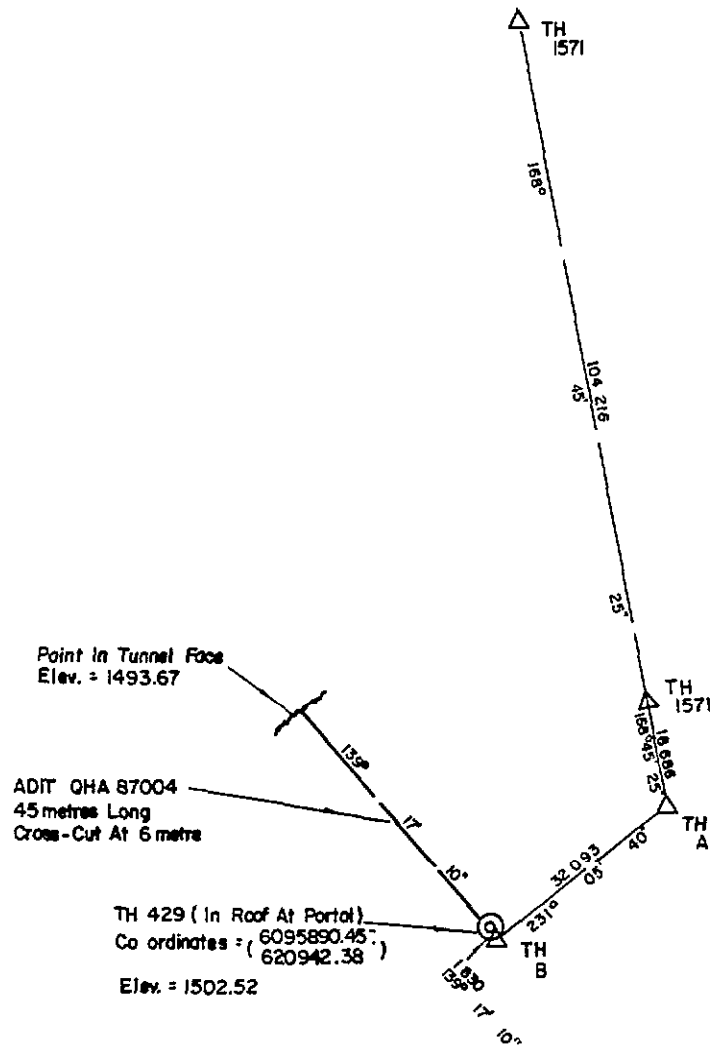
ADIT QHA 87003



SCALE (m)



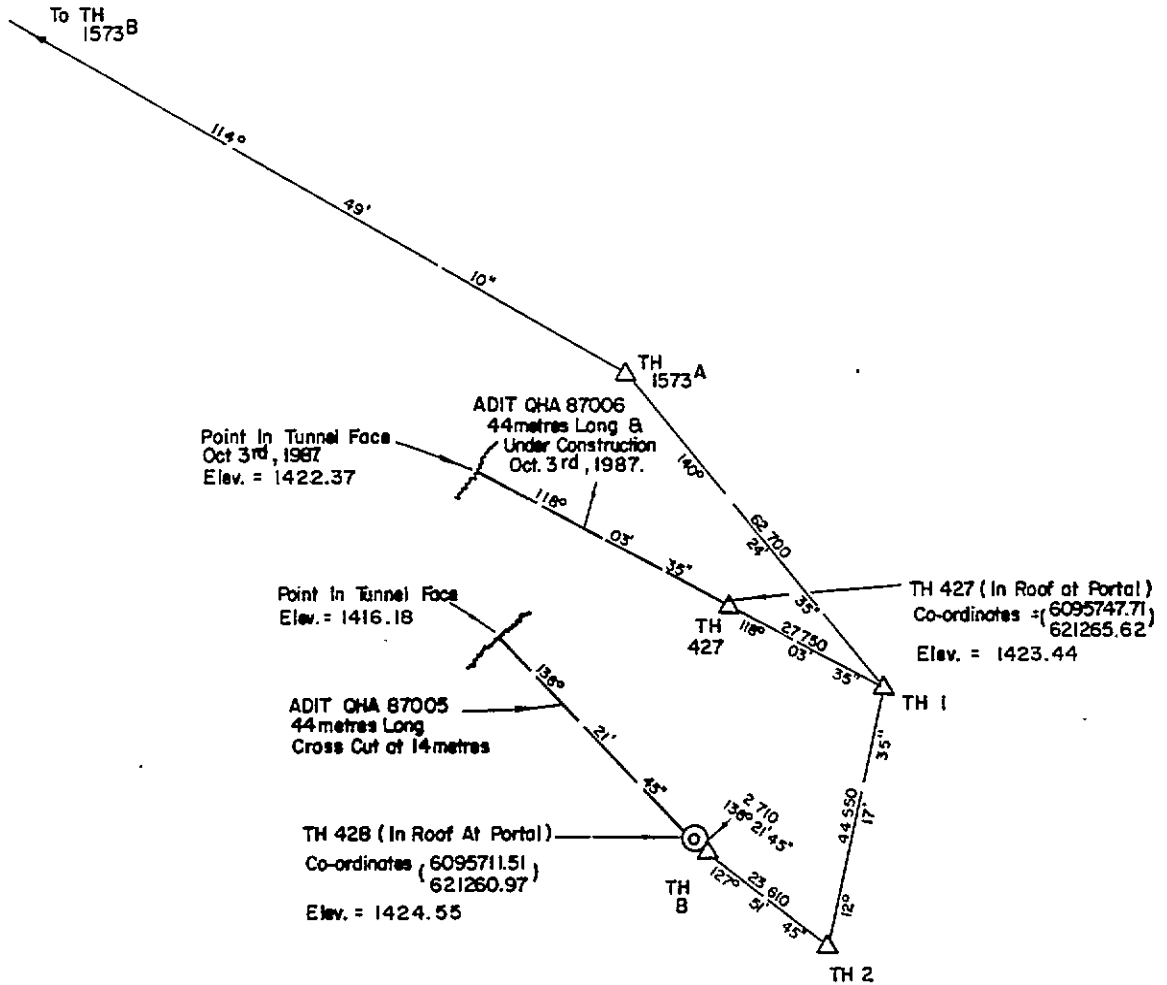
ADIT QHA 87004



SCALE (m)



ADITS QHA 87005 AND QHA 87006



SCALE (m)



Appendix 1
Section 1.3.3
Perry Creek Area