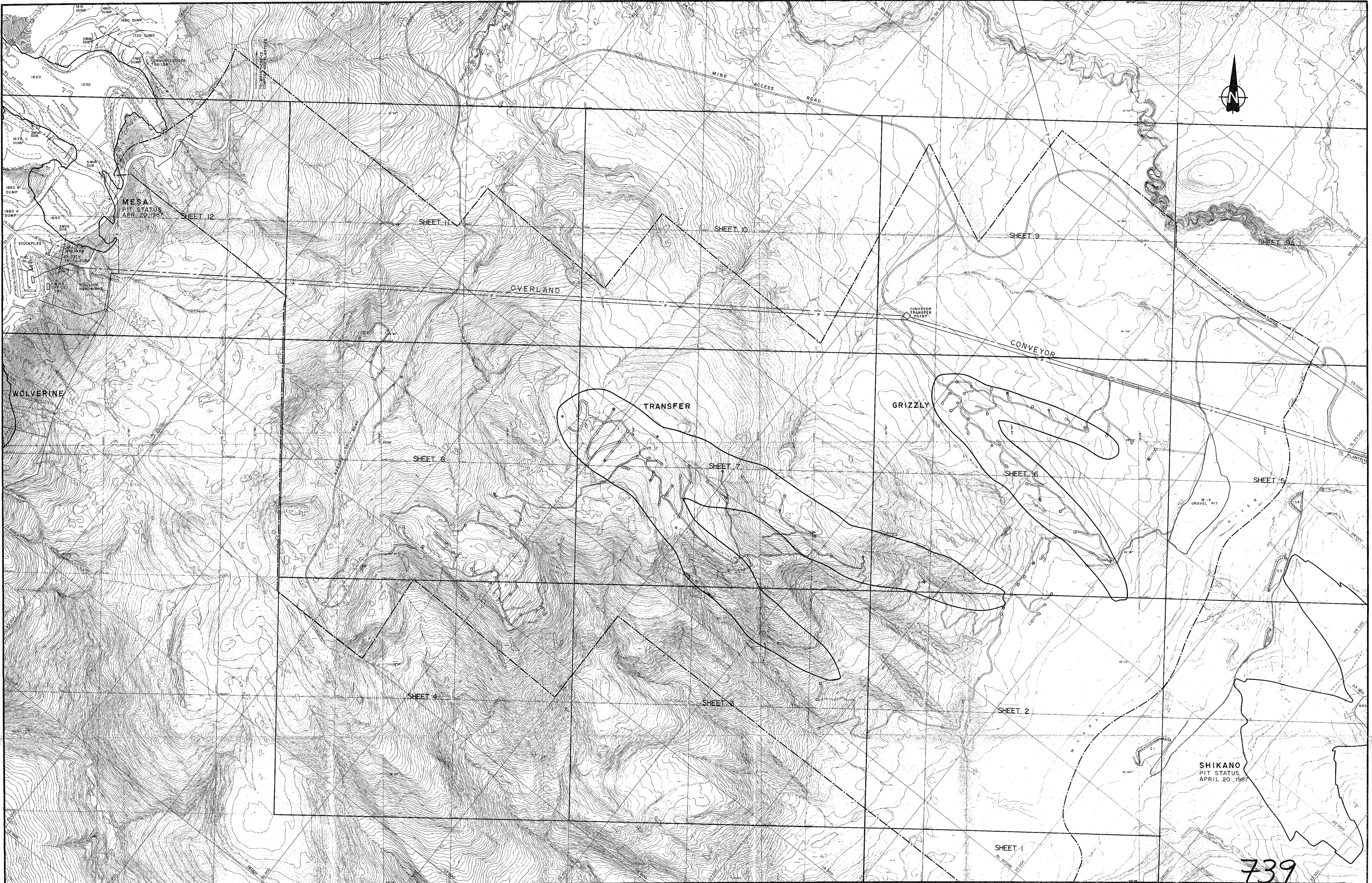
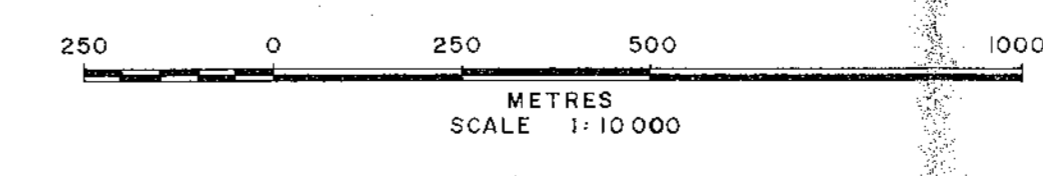


Appendix 1
Section 1.4
Topographic Maps

*Do not
film this
section.*



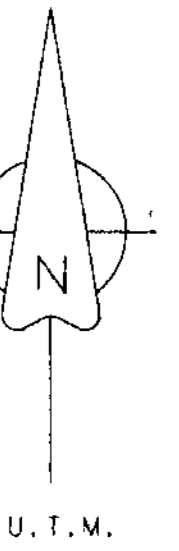
- LEGEND**
- EXISTING ROTARY DRILL HOLE
 - ◉ EXISTING DIAMOND DRILL HOLE
 - PROPOSED ROTARY DRILL HOLE
 - ◆ PROPOSED DIAMOND DRILL HOLE
 - ▲ EXISTING PHOTO OR SURVEY CONTROL POINT
 - ▲ PROPOSED PHOTO OR SURVEY CONTROL POINT
 - EXISTING ACCESS ROAD
 - PROPOSED ACCESS ROAD
 - OVERLAND CONVEYOR
 - POWER LINE
 - TRANSMISSION LINE
 - EXISTING ADIT
 - EXTENT OF 1987 1:2500 TOPOGRAPHIC MAPPING (APPROX.)



0	12/02/88	ORIGINAL DRAFT	TW	DJ	DJ	Drawing Title					
Rev.	D	M	Y	Revision	Description	Drn.	Des.	App.			
QUINTETTE COAL LIMITED Project Manager DENISON MINES LIMITED COAL DIVISION											
Area	TRANSFER/GRIZZLY		Category	LOCATION MAP		Scale	1:10,000	Drawing No.	88-902-12-001	Rev.	0

TRANSFER / GRIZZLY AREA
1987 TOPOGRAPHIC INDEX MAP

739



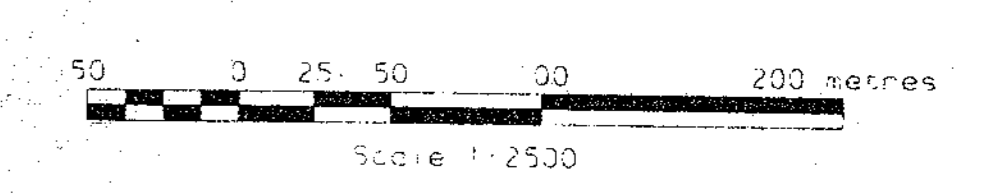
LEGEND

- Clearing Limit
- Contour Line
(2m Interval)
- Road
- Cutline
- Ditch
- Spot Elevation
- Power Poles

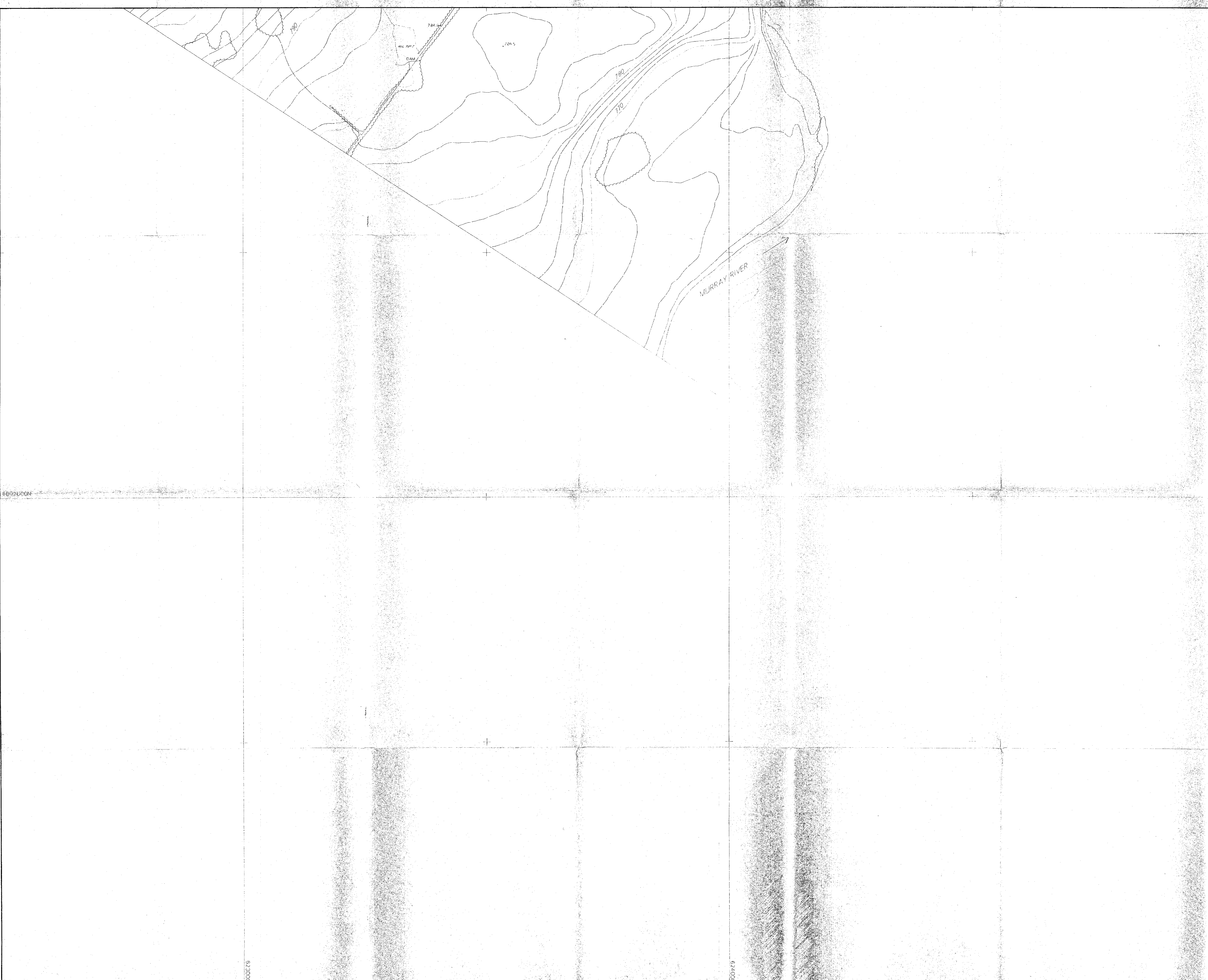
Survey Note for Topographic Mapping:
 *Photo targets numbered 1 - 13, and A - E were surveyed in the summer of 1987 by STABLES TRYON AND ASSOCIATES under the personal supervision of Tom Tryon, British Columbia Land Surveyor. Distances were measured by a "Model 14A" Geodimeter and angles were measured using a "Wild T15" Theodolite. Co-ordinates and elevations of targets 9, 11, 12 & "E" were determined from stations along conveyor and power lines Right-of-Way, from values tabulated by McElhenny and Associates.

INDEX

12	11	10	9	8
	7	6	5	4
	3	2	1	0



0	0088	Original Preparation	TW	D.J.
Rev.	D.M.T.	Revision Description	Drn.	Des. App.
QUINETTE COAL LIMITED				
Project Manager				
DENISON MINES LIMITED				
COAL DIVISION				
Area TRANSFER/GRIZZLY		Category TOPOGRAPHY		
Drawing Title				739
				SHEET 1
Scale	Drawing No.		Rev.	
1:2500	88-902-30-01		0	

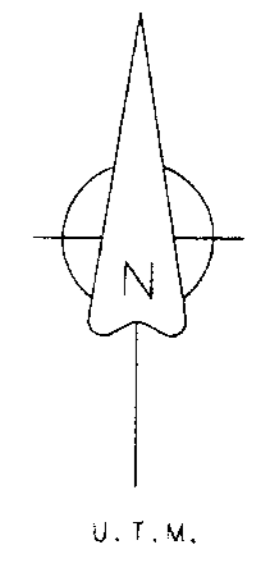
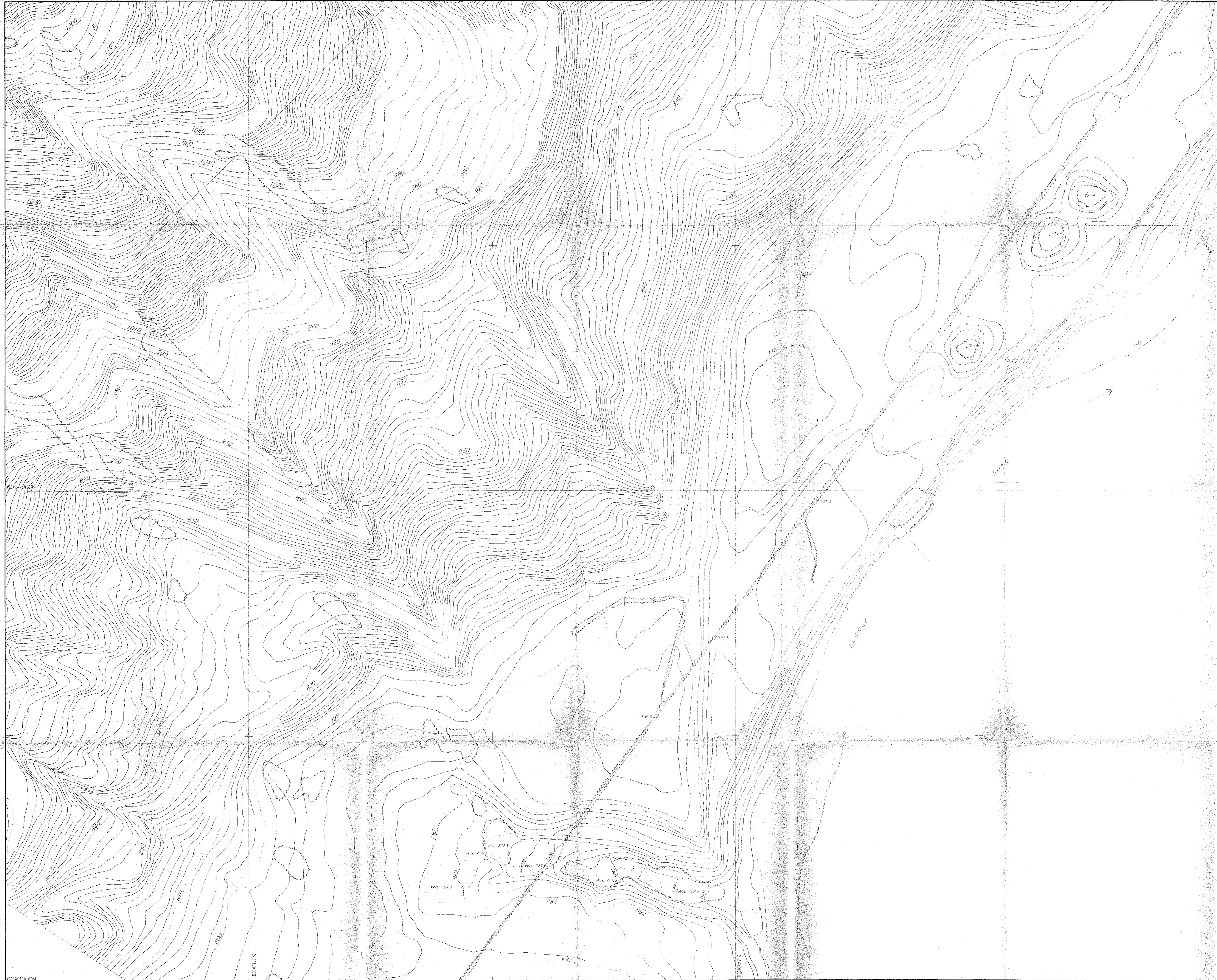


609200N

609100N

62300E

62400E



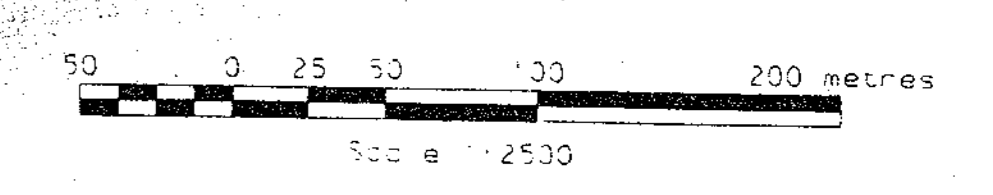
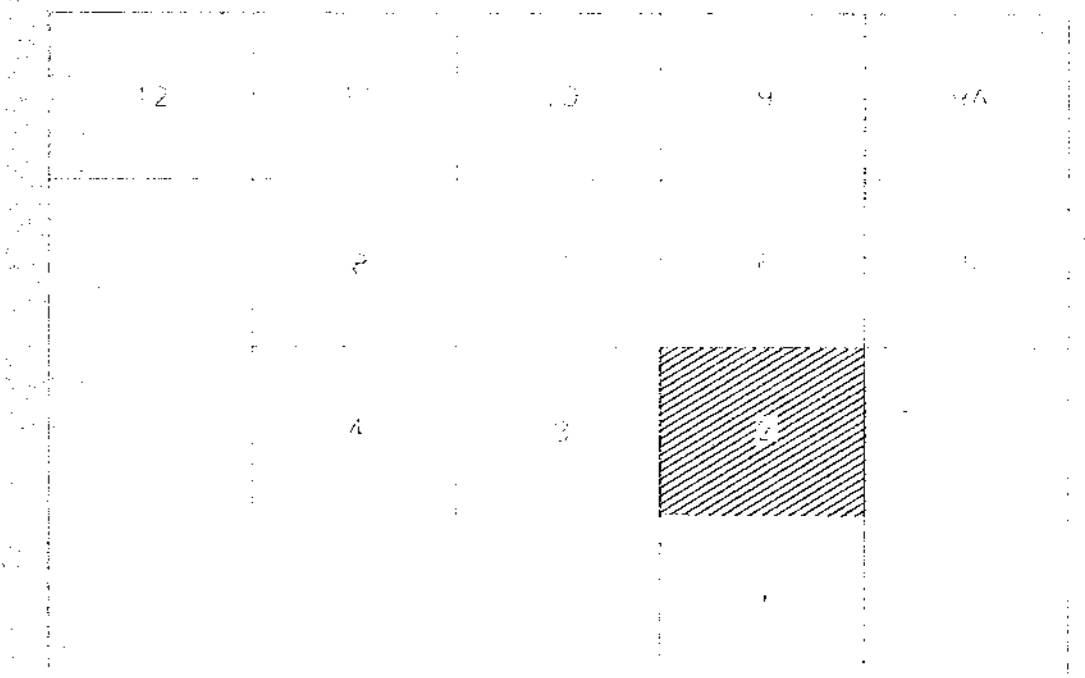
LEGEND

- Clearing Limit
- 800 Contour Line (2m Interval)
- Road
- Cutline
- Ditch
- 776.5 Spot Elevation
- Power Poles

Survey Note for Topographic Mapping:

"Photo targets numbered 1 - 13, and A - E were surveyed in the summer of 1987 by STABLES TRIVON AND ASSOCIATES under the personal supervision of Tom Trivon, British Columbia Land Surveyor. Distances were measured by a "Model 14A" Geodimeter and angles were measured using a "Wild T16" Theodolite. Co-ordinates and elevations of targets 9, 11, 12 & 13 were determined from stations along conveyor and power lines Right-of-Way, from values tabulated by McChamney and Associates".

INDEX



0	19 02 88	Original Preparation	TW	Dj
Rev.	D/M/Y	Revision Description	Drn.	Des. App.

QUINTETTE COAL LIMITED
 Project Manager
DENISON MINES LIMITED
 COAL DIVISION

Area: TRANSFER / GRIZZLY Category: TOPOGRAPHY

Drawing Title: 739

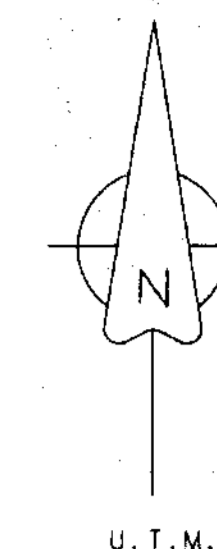
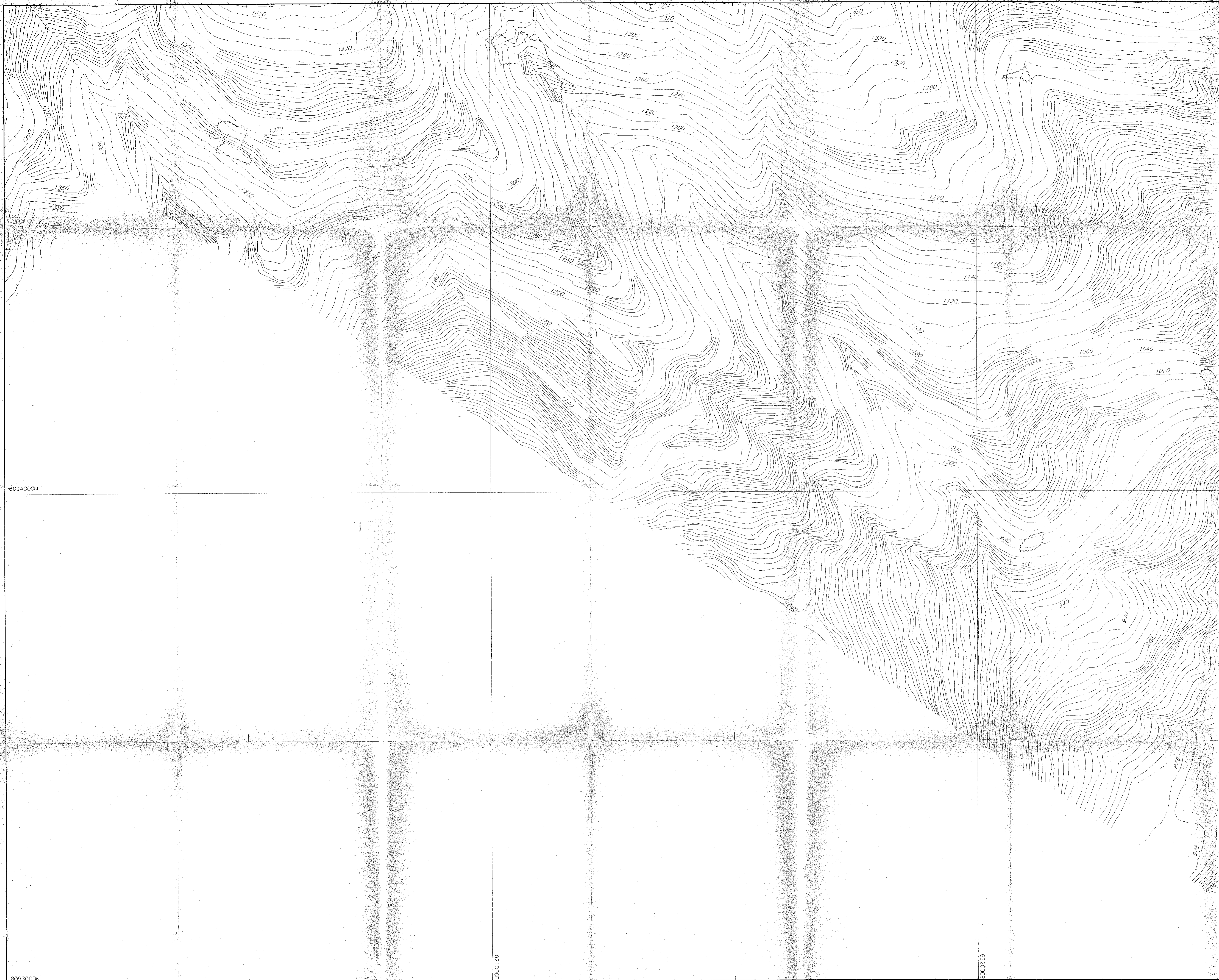
SHEET 2

Scale: 1:2500	Drawing No.: 88-902-30-02	Rev.: 0
---------------	---------------------------	---------

6083000N

573000E

573000E



LEGEND

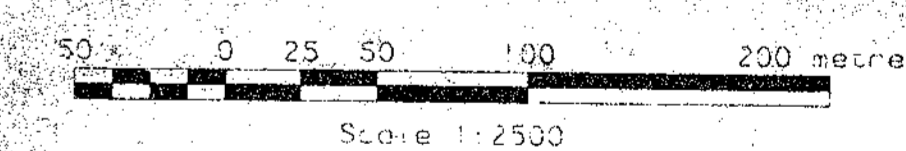
- Clearing Limit
- Contour Line (2m Interval)
- Road
- Outline
- Ditch
- Spot Elevation 776.5
- Power Poles

Survey Note for Topographic Mapping:

"Photo targets numbered 1 - 13, and A - E were surveyed in the summer of 1987 by STABLES TRYON AND ASSOCIATES under the personal supervision of Tom Tryon, British Columbia Land Surveyor. Distances were measured by a "Model 14A" Geodimeter and angles were measured using a "Wild T15" Theodolite. Co-ordinates and elevations of targets 9, 11, 12 & "E" were determined from stations along conveyor and power lines Right-of-Way, from values tabulated by McElhenny and Associates".

INDEX

12	11	10	9	8A
	8	7	6	5
	4		2	
			1	



0	15	2088	Original Preparation		TW	DJ	
Rev.	0	M	Y	Revision Description	Drn.	Des.	App.

QUINTETTE COAL LIMITED
 Project Manager
DENISON MINES LIMITED
 COAL DIVISION

Area: TRANSFER / GRIZZLY Category: TOPOGRAPHY

Drawing Title
739

SHEET 3

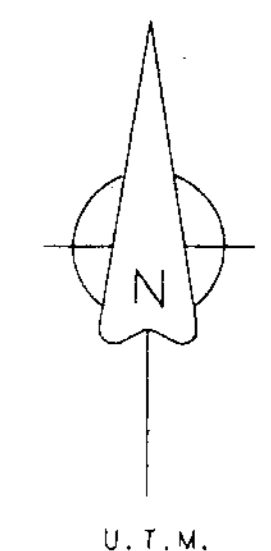
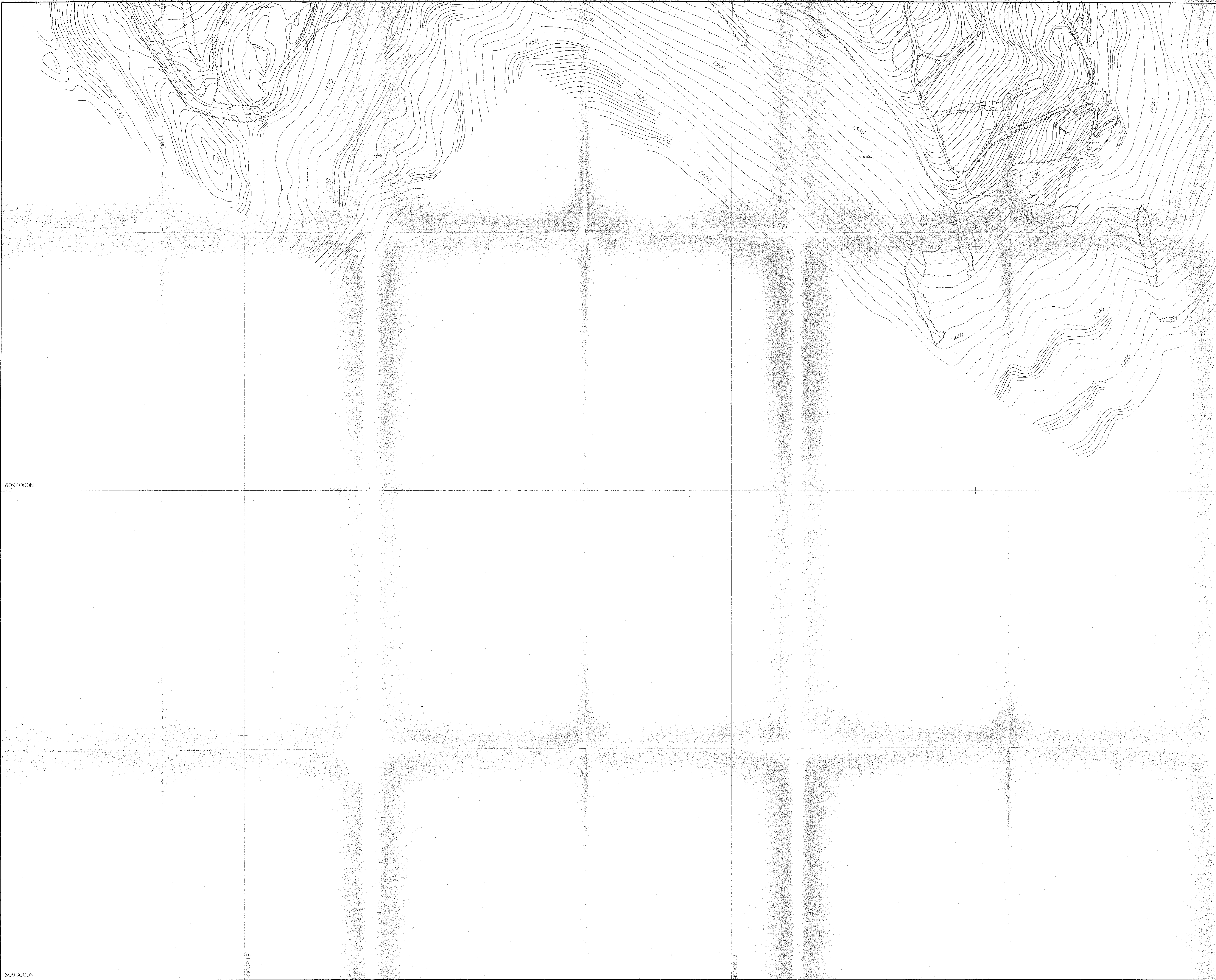
Scale	Drawing No.	Rev.
1:2500	88-902-30-03	0

609400CN

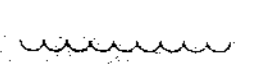
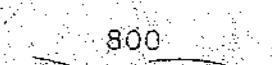
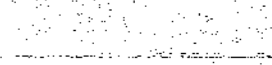


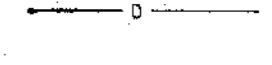
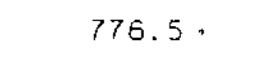
609300CN

621000E

622000E



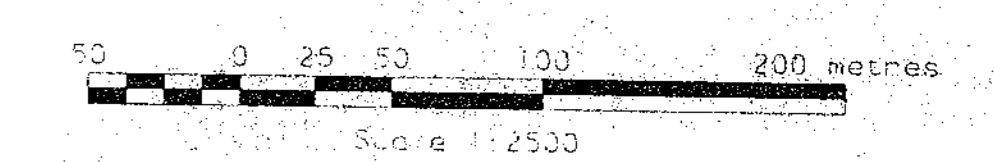
LEGEND

-  Clearing Limit
-  Contour Line (2m Interval)
-  Road
-  Outline
-  Ditch
-  Spot Elevation
-  Power Poles

Survey Note for Topographic Mapping:
 "Photo targets numbered 1 - 13, and A - E were surveyed in the summer of 1987 by STABLES TRYON AND ASSOCIATES under the personal supervision of Tom Tryon, British Columbia Land Surveyor. Distances were measured by a "Model 14A" Geodimeter and angles were measured using a "Wild T16" Theodolite. Co-ordinates and elevations of targets 9, 11, 12 & 13 were determined from stations along conveyor and power lines Right-of-Way, from values tabulated by McElhannay and Associates".

INDEX

12	15	9	8A
8	1	6	5
7	3	2	



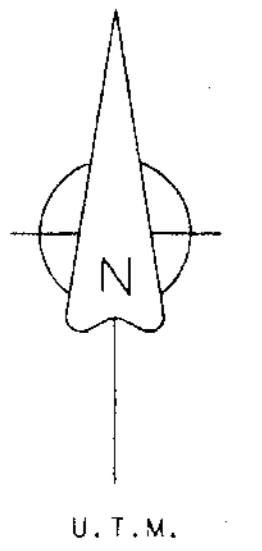
0	9	0288	Original Preparation		TW	DJ
Rev.	D	M	Y	Revision Description	Drn.	Des. App.
QUINETTE COAL LIMITED						
Project Manager						
DENISON MINES LIMITED						
COAL DIVISION						
Area TRANSFER/GRIZZLY			Category TOPOGRAPHY			
Drawing Title			739			
SHEET 4						
Scale	Drawing No.			Rev.		
1:2500	88-902-30-04			0		

6094000N

6094000N

4700619

4700619



LEGEND

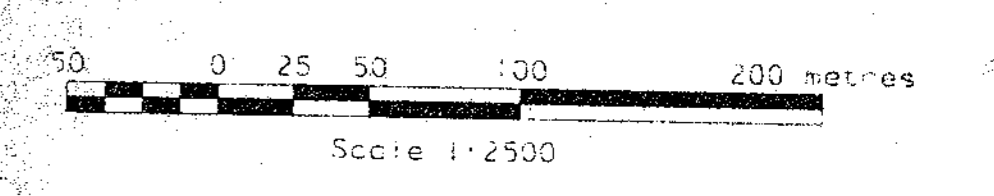
- Clearing Limit
- Contour Line (2m Interval)
- Road
- Outline
- Ditch
- Spot Elevation
- Power Poles

Survey Note for Topographic Mapping:

Photo targets numbered 1 - 13, and A - E were surveyed in the summer of 1987 by STABLES TRYON AND ASSOCIATES under the personal supervision of Tom Tryon, British Columbia Land Surveyor. Distances were measured by a "Model 14A" Goniometer and angles were measured using a "Wild T15" Theodolite. Coordinates and elevations of targets 9, 11, 12 & "E" were determined from stations along conveyor and power lines Right-of-Way. From values tabulated by "McElhannay and Associates".

INDEX

12	11	10	9	8A
	8	7	6	
	4	3	2	
			1	



Rev.	D	M	Y	Revision	Description	Drn.	Des.	App.
0				19 0288	Original Preparation		TW	DJ

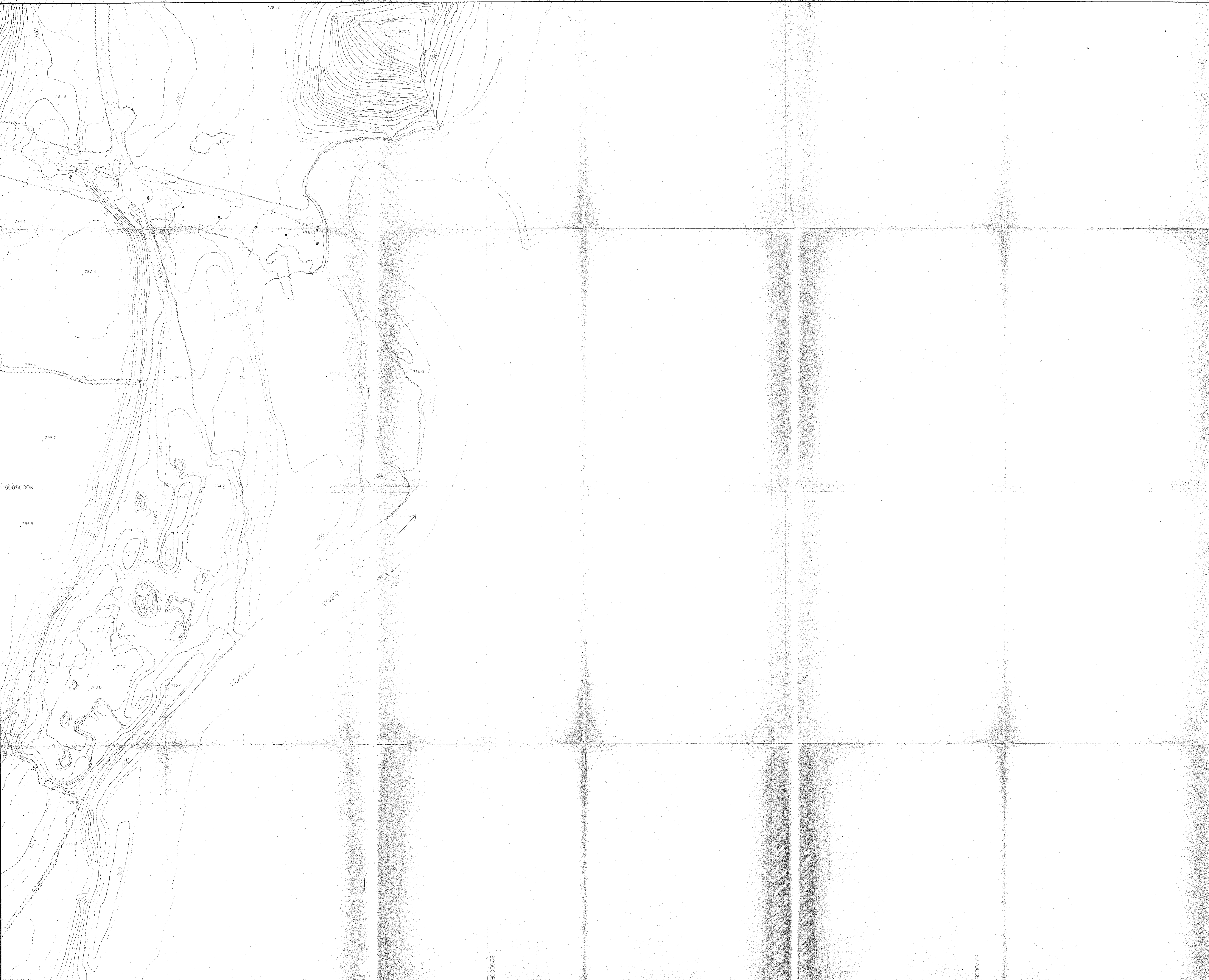
QUINTETTE COAL LIMITED
 Project Manager
DENISON MINES LIMITED
 COAL DIVISION

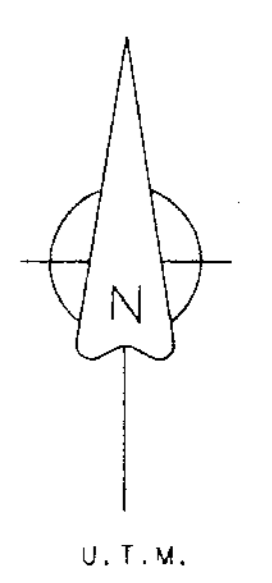
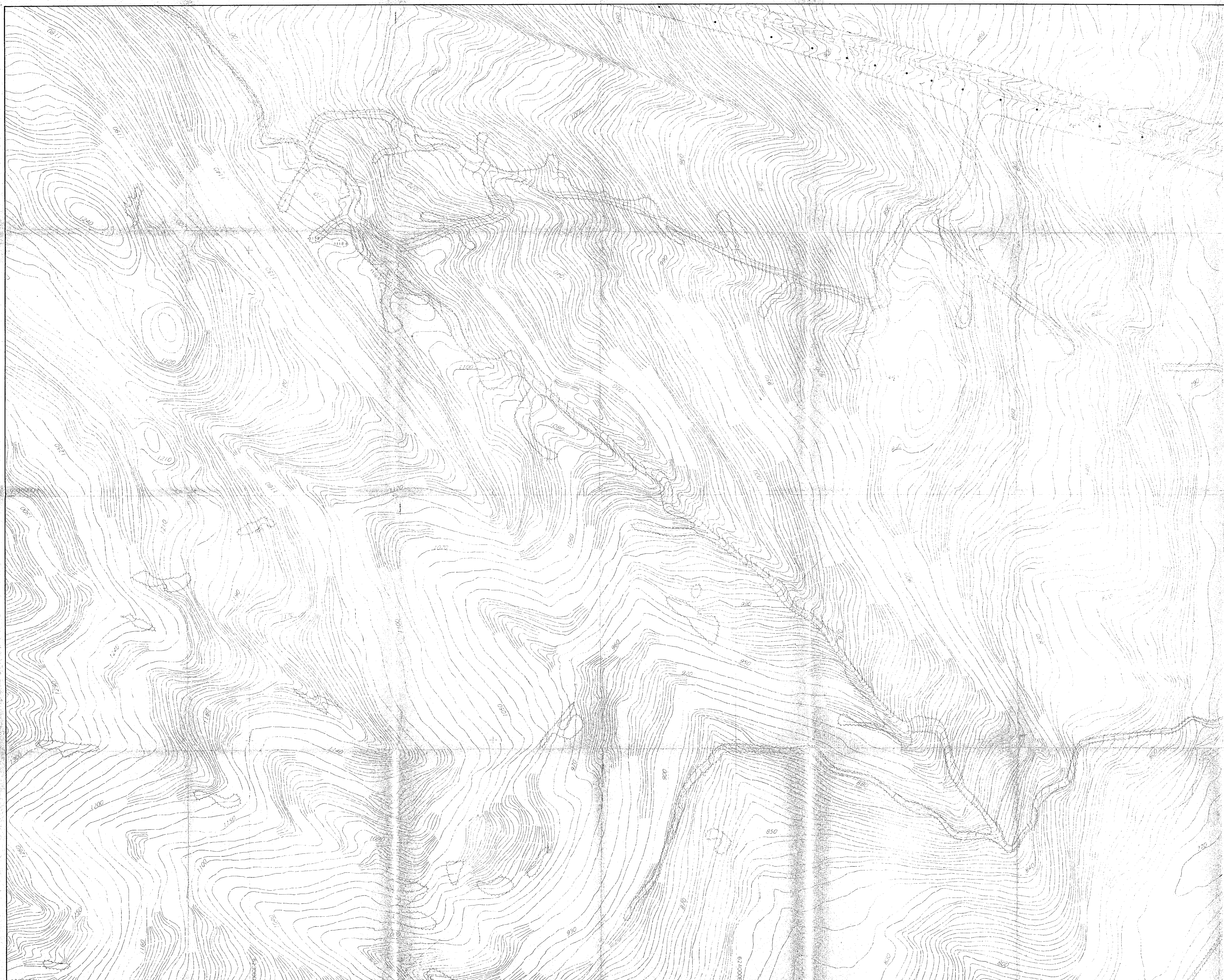
Area TRANSFER / GRIZZLY Category TOPOGRAPHY

Drawing Title
739

SHEET 5

Scale 1:2500	Drawing No. 88-902-30-05	Rev. 0
--------------	--------------------------	--------





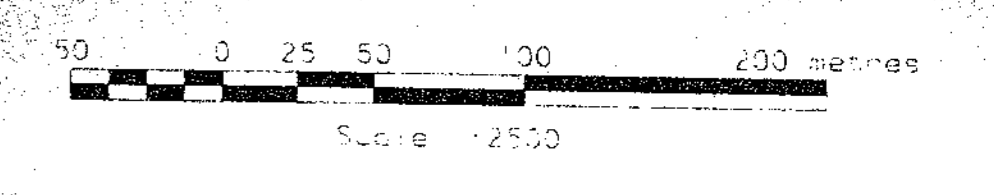
LEGEND

- Clearing Limit
- Contour Line (2m Interval)
- Road
- Cutline
- Ditch
- 776.5 Spot Elevation
- Power Poles

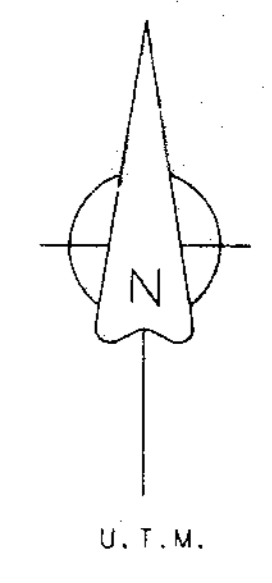
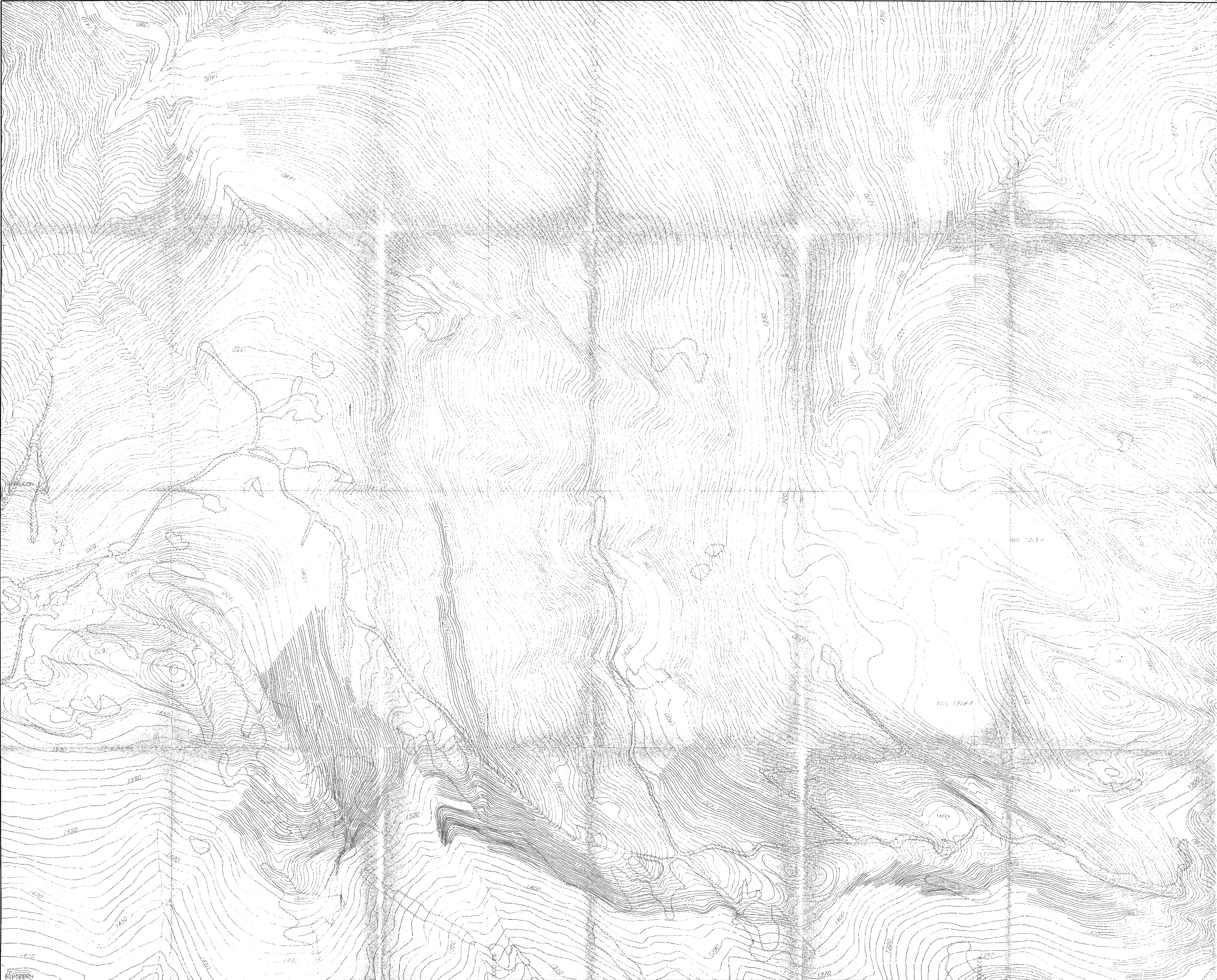
Survey Note for Topographic Mapping:
 "Photo targets numbered 1 - 13, and A - E were surveyed in the summer of 1987 by STABLES TRYON AND ASSOCIATES under the personal supervision of Tom Tryon, British Columbia Land Surveyor. Distances were measured by a "Model 14" Geodimeter and angles were measured using a "Wild T16" theodolite. Co-ordinates and elevations of targets 9, 11, 12 & "E" were determined from stations along conveyor and power lines Right-of-Way, from values tabulated by McElhanney and Associates".

INDEX

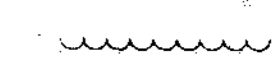
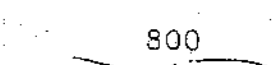
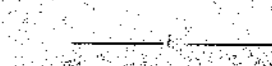




12	11	10	9	8A
	8	7	6	5
	4	3	2	



0	19	02	88	Original Preparation				TW	DJ
Rev.	D	M	Y	Revision Description	Drn.	Des.	App.		
QUINTETTE COAL LIMITED									
Project Manager DENISON MINES LIMITED									
COAL DIVISION									
Area TRANSFER / GRIZZY					Category TOPOGRAPHY				
Drawing Title					739				
SHEET 6									
Scale	1:2500			Drawing No.	88-902-30-06			Rev.	0



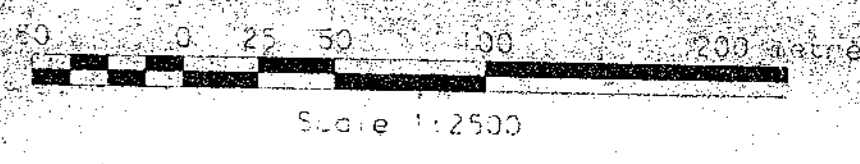
LEGEND

-  Clearing Limit
-  800 Contour Line (2m Interval)
-  Road
-  Outline
-  0 Ditch
-  776.5 Spot Elevation
-  ** Power Poles

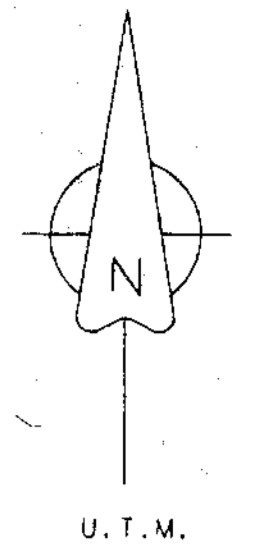
Survey Note for Topographic Mapping:
 Photo targets numbered 1 - 13, and A - E were surveyed in the summer of 1987 by STABLES TRON AND ASSOCIATES under the personal supervision of Tom Tron, British Columbia Land Surveyor. Distances were measured by a "Model 14A" Geodimeter and angles were measured using a "Wild T16" Theodolite. Co-ordinates and elevations of targets 9, 11, 12 & "E" were determined from stations along conveyor and power lines Right-of-Way, from values tabulated by McElhanney and Associates.

INDEX

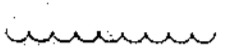
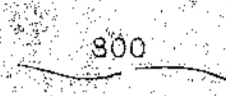
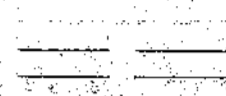

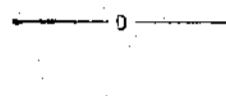
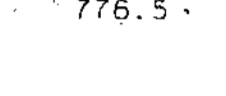

12	11	10	9	8
8		6	5	
4	3	2	1	



0	19 02 88	Original Preparation	TW	DJ
Rev.	0	Revision Description	Drn.	Des. App.
QUINTETTE COAL LIMITED				
Project Manager				
DENISON MINES LIMITED				
COAL DIVISION				
Area TRANSFER/GRIZZLY		Category TOPOGRAPHY		
Drawing Title				739
SHEET 7				
Scale	Drawing No.	Rev.		
1:2500	88-902-30-07	0		



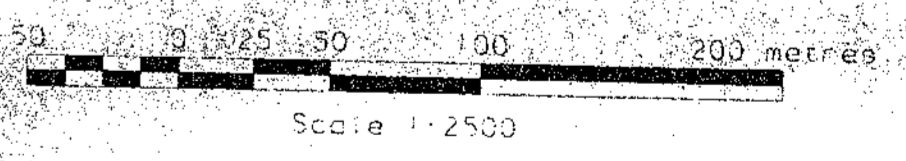
LEGEND

-  Clearing Limit
-  Contour Line
2m Interval
-  Road
-  Outline
-  Ditch
-  Spot Elevation
-  Power Poles

Survey Note for Topographic Mapping:
 Photo targets numbered 1 - 13, and A - E were surveyed in the summer of 1967 by STABLES TRYON AND ASSOCIATES under the personal supervision of Tom Tryon, British Columbia Land Surveyor. Distances were measured by a "Model 144" Geodimeter and angles were measured using a "Wild T15" Theodolite. Coordinates and elevations of targets 9, 11, 12 & "E" were determined from stations along conveyor and power lines Right-of-Way, from values tabulated by McChernomy and Associates".

INDEX

12	1	10	9	9A
		7	6	5
	4	3	2	
			1	



Rev.	D	M	Y	Revision	Description	Drn.	Des.	App.
0	19	02	68	Original Preparation			TW	DJ

QUINTETTE COAL LIMITED
 Project Manager
DENISON MINES LIMITED
 COAL DIVISION

Area: TRANSFER / GRIZZLY Category: TOPOGRAPHY

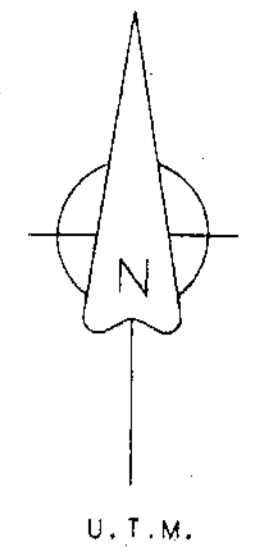
Drawing Title: **739**

SHEET 8

Scale: 1:2500	Drawing No.: 88-902-30-08	Rev.: 0
---------------	---------------------------	---------

6095000N

6095000N



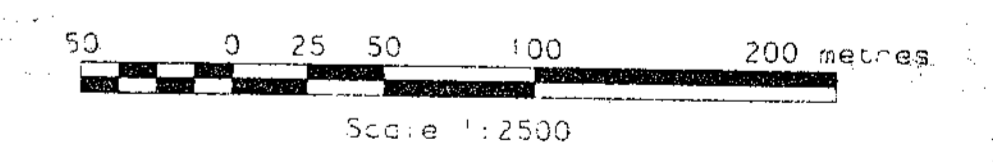
LEGEND

- Clearing Limit
- Contour Line (2m Interval)
- Road
- Cutline
- Ditch
- Spot Elevation
- Power Poles

Survey Note for Topographic Mapping:
 "Photo targets numbered 1 - 13, and A - E were surveyed in the summer of 1987 by STABLES TRYON AND ASSOCIATES under the personal supervision of Tom Tryon, British Columbia Land Surveyor. Distances were measured by a "Model 184" Goniometer and angles were measured using a "Wild T16" Theodolite. Co-ordinates and elevations of targets 9, 11, 12 & "E" were determined from stations along conveyor and power lines Right-of-Way, from values tabulated by McElhanney and Associates".

INDEX

12	11	10	9	8
	7	6	5	
	4	3	2	
			1	



0	19	02	88	Original	Preparation	TW	DJ
Rev.	D	M	Y	Revision	Description	Drn.	Des.

QUINTETTE COAL LIMITED
 Project Manager
DENISON MINES LIMITED
 COAL DIVISION

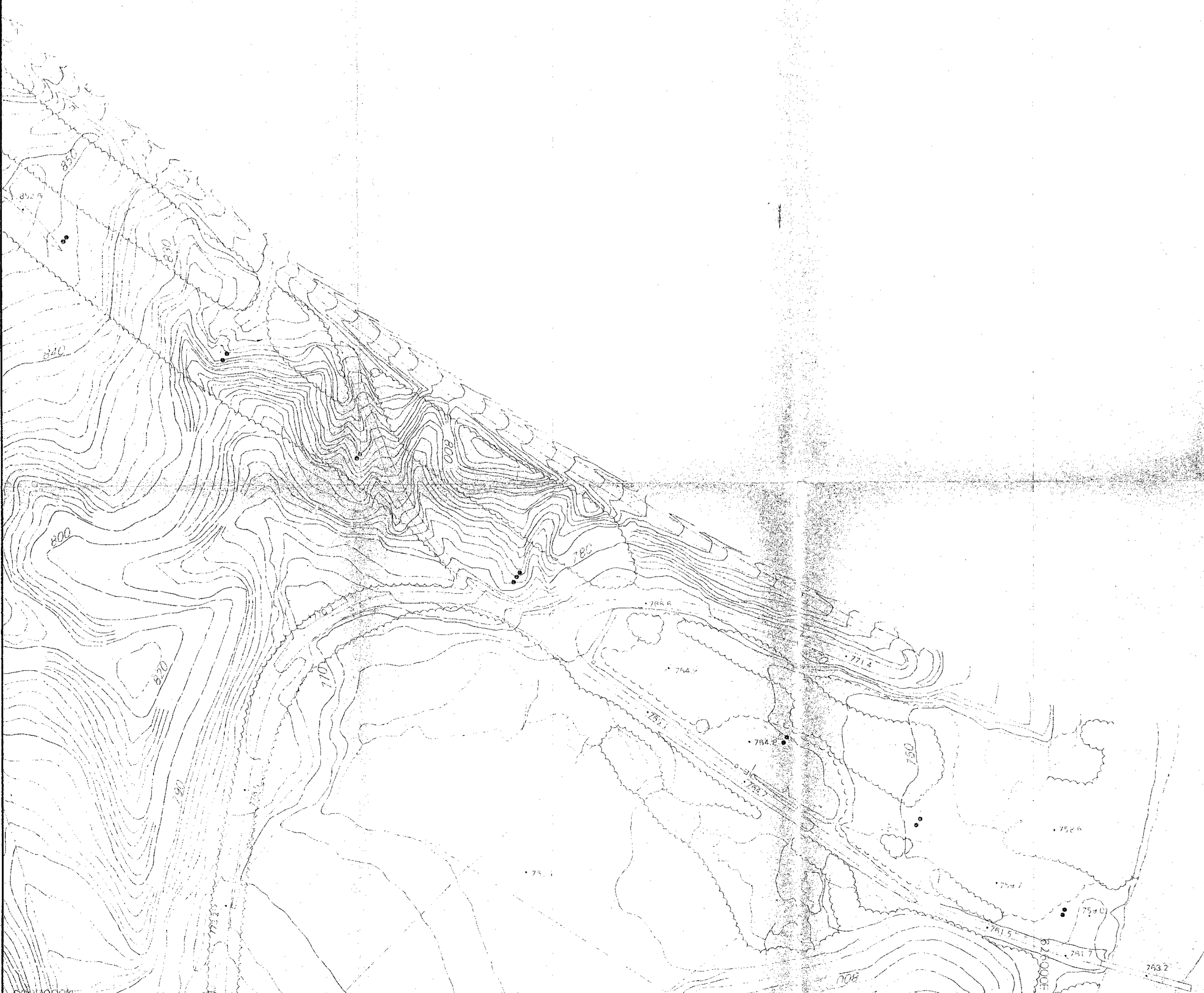
Area TRANSFER / GRIZZLY Category TOPOGRAPHY

Drawing Title 739

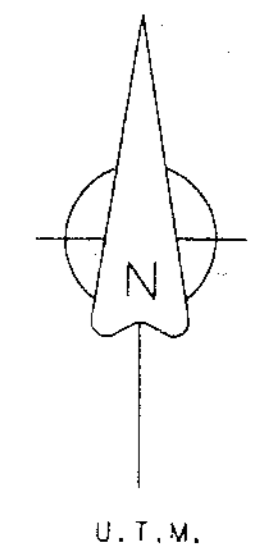
SHEET 9A

Scale 1:2500	Drawing No. 88-902-30-09	Rev. 0
--------------	--------------------------	--------

6090000N



E000179



LEGEND

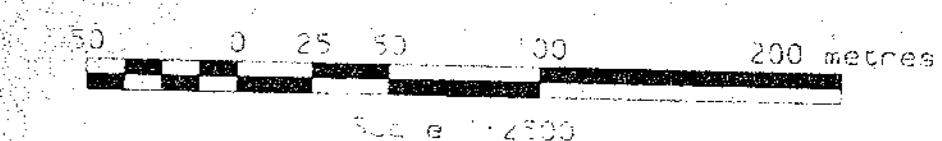
- Clearing Limit
- Contour Line (2m Interval)
- Road
- Outline
- Ditch
- Spot Elevation
- Power Poles

Survey Note for Topographic Mapping:

"Photo targets numbered 1 - 13, and A - F were surveyed in the summer of 1987 by STABLES IRWIN AND ASSOCIATES under the personal supervision of Tom Tryon, British Columbia Land Surveyor. Distances were measured by a "Model 14A" Geodimeter and angles were measured using a "Wild T16" theodolite. Co-ordinates and elevations of targets 9, 11, 12 & "E" were determined from stations along conveyor and power lines Right-of-Way, from values tabulated by McElhanney and Associates".

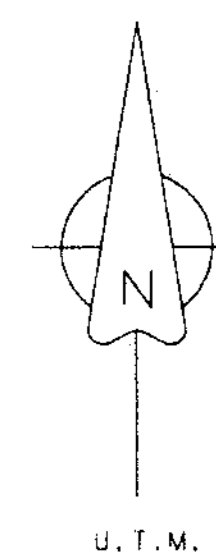
INDEX

12	11	10	9
8	7	6	5


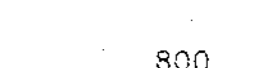

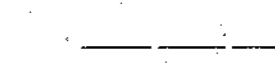
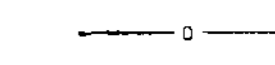
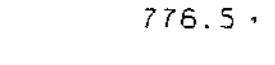



0 19 0298 Original Preparation	
Rev. D.M.Y. Revision Description	Dra. Des. App.
QUINETTE COAL LIMITED	
Project Manager	
DENISON MINES LIMITED	
COAL DIVISION	
Area TRANSFER/GRIZZLY	Category TOPOGRAPHY
739	
SHEET 9	
Scale 1:2500	Drawing No. 88-902-30-10
Rev. 0	





LEGEND

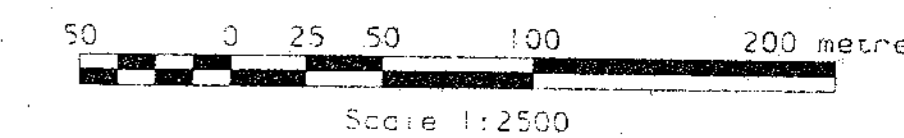
-  Clearing Limit
-  800 Contour Line (2m Interval)
-  Road
-  Outline
-  0 Ditch
-  776.5 Spot Elevation
-  •• Power Poles

Survey Note for Topographic Mapping:

"Photo targets numbered 1 - 13, and A - E were surveyed in the summer of 1987 by STABLES TRYON AND ASSOCIATES under the personal supervision of Tom Tryon, British Columbia Land Surveyor. Distances were measured by a "Model 148" Geodimeter and angles were measured using a "NIX 116" Theodolite. Co-ordinates and elevations of targets 9, 11, 12 & "E" were determined from stations along conveyor and power lines Right-of-Way, from values tabulated by McElhanney and Associates".

INDEX

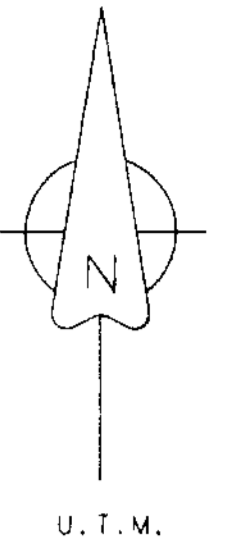
12	11	10	9	8
2	7	6	5	
4	3	2		



0	19 02 88	Original preparation	TW	DJ
Rev.	0	M	Y	
		Revision Description	Drn.	Des. App.
QUINTETTE COAL LIMITED				
Project Manager				
DENISON MINES LIMITED				
COAL DIVISION				
Area	TRANSFER / GRIZZLY	Category	TOPOGRAPHY	
Drawing Title	739			
SHEET 10				
Scale	1:2500	Drawing No.	88-902-30-11	Rev.
				0

809RC004

809RC004



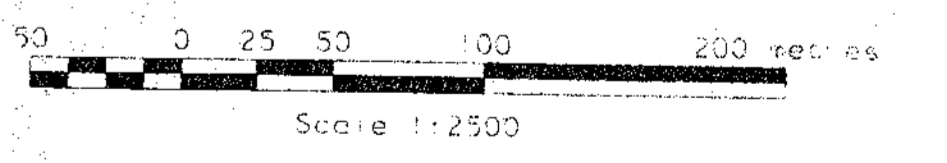
LEGEND

- Clearing Limit
- 800 Contour Line (2m interval)
- Road
- Outline
- Ditch
- 776.5 Spot Elevation
- Power Poles

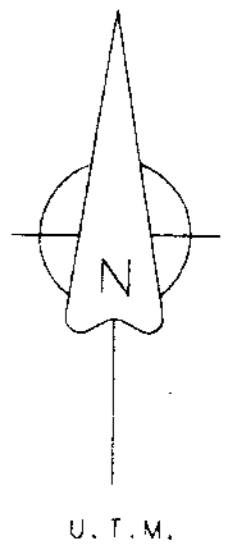
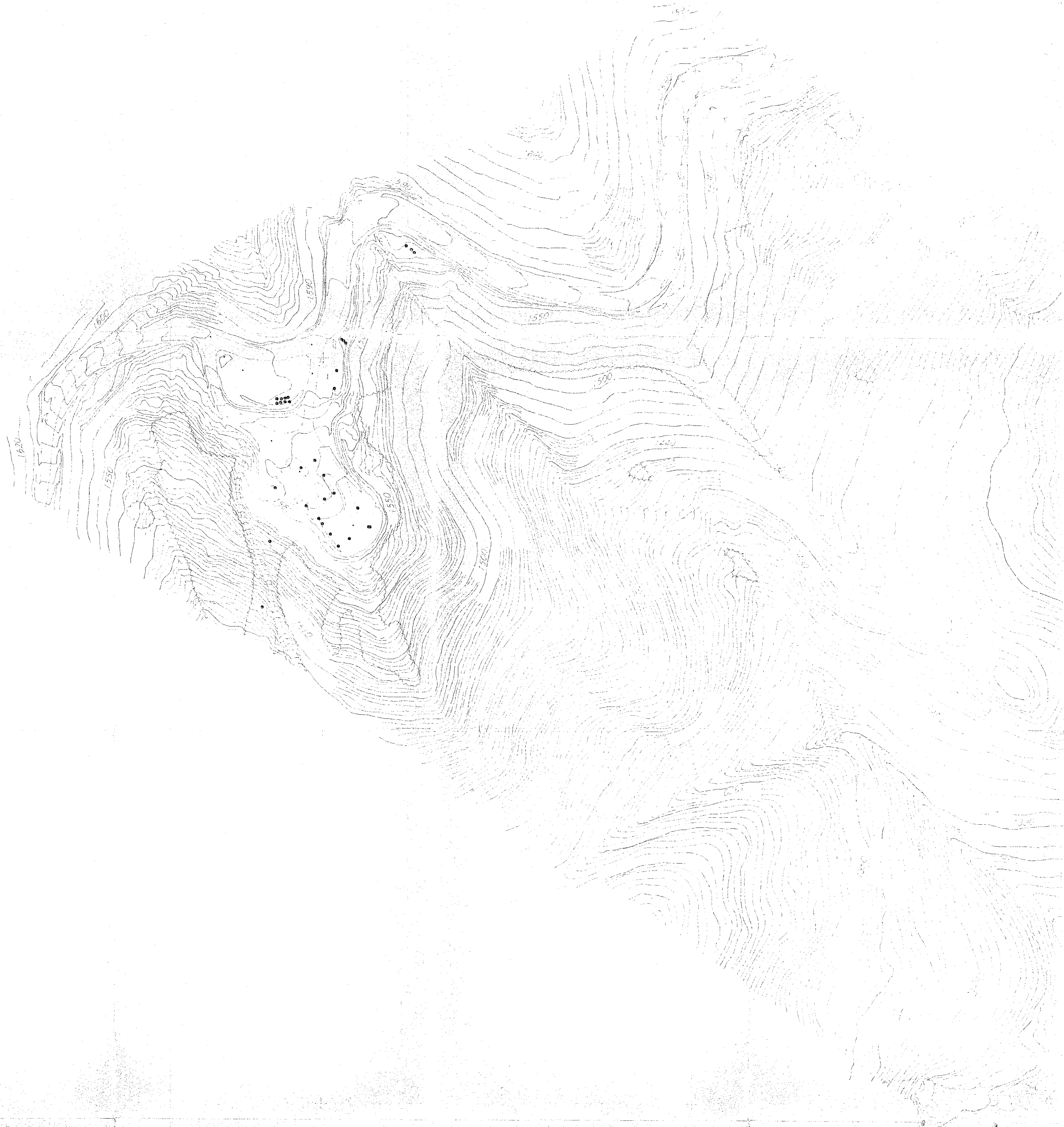
Survey Note for Topographic Mapping:
 "Photo targets numbered 1 - 13, and A - E were surveyed in the summer of 1987 by STABLES TRYON AND ASSOCIATES under the personal supervision of Tom Tryon, British Columbia Land Surveyor. Distances were measured by a "Model 14" Geodimeter and angles were measured using a "Wild T16" Theodolite. Co-ordinates and elevations of targets 9, 11, 12 & "E" were determined from stations along conveyor and power lines sight-of-day, from values tabulated by McElhaney and Associates".

INDEX


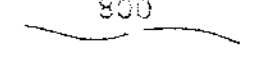
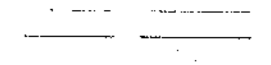
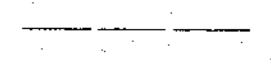
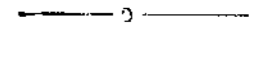
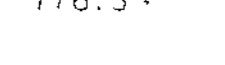

12	13	14	15
2	3	4	5
6	7	8	9



0	19 02 88	Original Preparation	TW	DJ
Rev.	ID	M	Y	Y
		Revision Description	Drn.	Des.
QUINTETTE COAL LIMITED				
Project Manager				
DENISON MINES LIMITED				
COAL DIVISION				
Area TRANSFER / GRIZZLY		Category TOPOGRAPHY		
Drawing Title				
739				
SHEET II				
Scale	Drawing No.	Rev.		
1:2500	88-902-30-12	O		



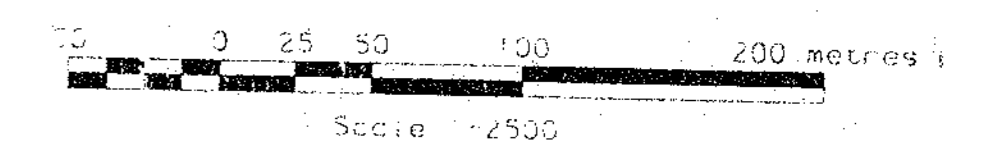
LEGEND

-  Clearing Limit
-  Contour Line (2m Interval)
-  Road
-  Outline
-  Ditch
-  Spot Elevation
-  Power Poles

Survey Note for Topographic Mapping:
 "Photo targets numbered 1 - 13, and A - E were surveyed in the summer of 1987 by STABLES TRYON AND ASSOCIATES under the personal supervision of Tom Tryon, British Columbia Land Surveyor. Distances were measured by a "Model 14A" Geodimeter and angles were measured using a "Wild T15" Theodolite. Co-ordinates and elevations of targets 9, 11, 12 & "E" were determined from stations along conveyor and power lines Right-of-Way, from values tabulated by McElhammy and Associates".

INDEX

--	--	--	--	--	--	--	--	--	--



Rev.	D.	M.	Y.	Revision	Description	Drn.	Des.	App.
0	19	02	04	Original Preparation		TW	DJ	

QUINTETTE COAL LIMITED
 Project Manager
DENISON MINES LIMITED
 COAL DIVISION

Area TRANSFER/GRIZZLY Category TOPOGRAPHY

Drawing Title **739**

SHEET 12

Scale	Drawing No.	Rev.
1:2500	88-902-30-13	0

8092000N

8097000N

873000E

873000E