

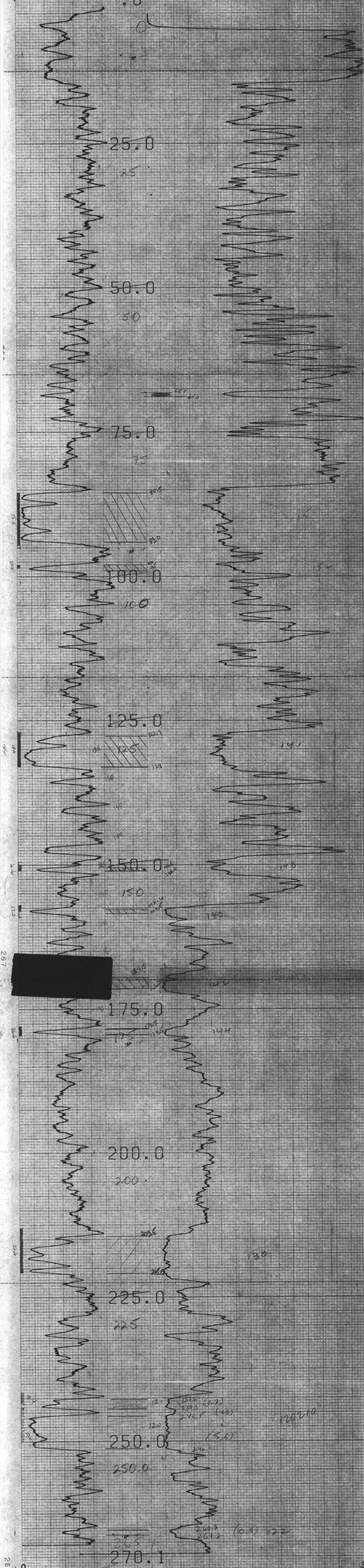
R. H. 1984
 FORDING COAL
 EAGLE MOUNTAIN

149684
 25715.3
 2271.2

750

HOLE DIAMETER = 10.0
 PROBE # 9055A - 010
 SENSOR #1 CAL STD CPS = 152
 SENSOR #1 CAL RUN CPS = 191
 SENSOR #4 CAL BIAS = 0
 DATA V8L2WA TRUCK # 367
 S. FRASER APPL. #7 L1

Notes: ~~MAN picks done 5.0m too deep~~
 ie 15 seconds HW would be @ 80.5m.



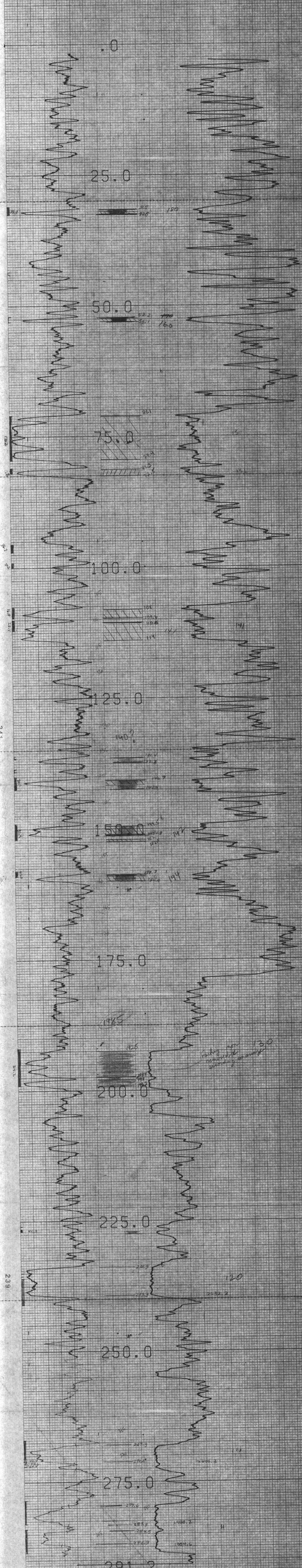
750

2 PLATE 06-03

R.H. 1985
FORDING COAL
EAGLE STAGE 4 WEST

1497-173
25931.1
2731.5

HOLE DIAMETER = 10.0
PROBE # 9855A - 010
SENSOR #4 CAL STD CPS = 152
SENSOR #4 CAL RUN CPS = 191
SENSOR #4 CAL BIAS = 0
DATA V8L2WA TRUCK # 367
S. FRASER APPL #7 L1



GAMMA API
N-N KCPS

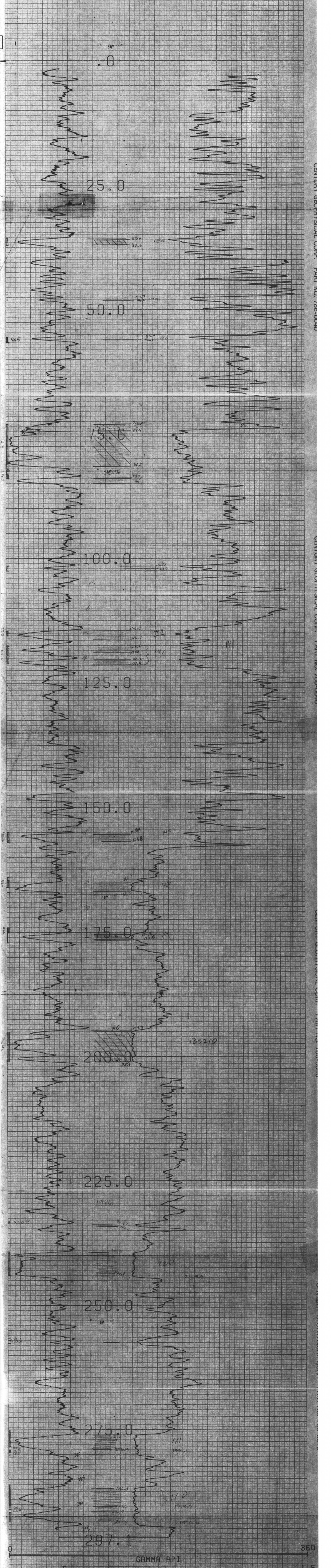
750

149985.0
25421.6
2270.0

COMPU-LOG V8L2 PLOT 06-09-86

R.H. 1986 FORDING COAL EAGLE STAGE 4 WEST

HOLE DIAMETER : 10.0
PROBE # 9055A - 010
SENSOR #4 CAL STD CPS = 152
SENSOR #4 CAL RUN CPS = 191
SENSOR #4 CAL BIAS = 0
DATA V8L2* A TRUCK # 367
S. FRASER APPL.#7 L1



CENTURY GEOPHYSICAL CORP. PART NO. 780-0040

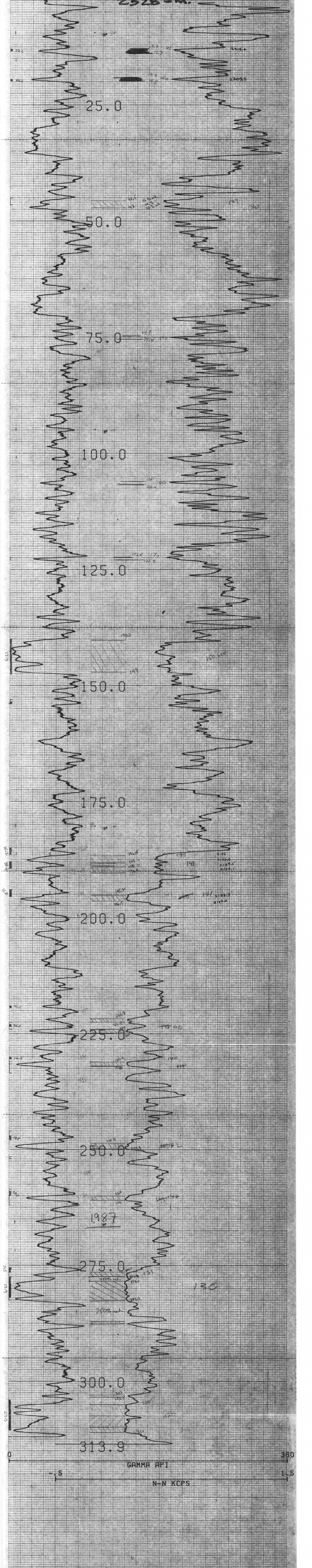
750
150078.3 N
25637.0 E
2328.5

COMPU-LOG VBL2 PLOT 06-23-88

R.H 1987
FORDING COAL
EAGLE STAGE 6 WEST

HOLE DIAMETER : 10.0
PROBE # 9055A - 010
SENSOR #4 CAL STD CPS = 152
SENSOR #4 CAL RUN CPS = 191
SENSOR #4 CAL BIAS = 0
DATA VBL2WA TRUCK # 367
S. FRASER APPL.#7 L1

1987
2328.5m.



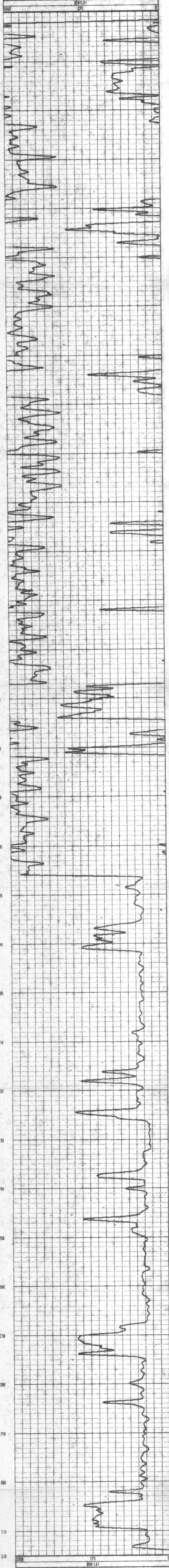
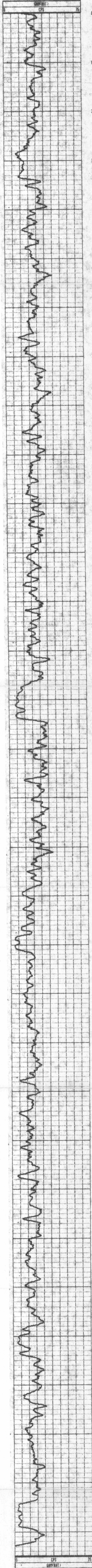


Century

GAMMA-DEN LS

COMPANY : FORDING COAL LTD.	OTHER SERVICES: 750	
WELL : RH 1988		
LOCATION/FIELD : EAGLE STAGE		
COUNTY : ELKFORD		
STATE : B.C		
SECTION :	TOWNSHIP :	
	RANGE :	
DATE : 06/23/88	PERMANENT DATUM : GL	ELEVATIONS
DEPTH DRILLER : 315.00 M	ELEV. PERM. DATUM: KB :	
LOG BOTTOM : 320.00	LOG MEASURED FROM: GL	DF :
LOG TOP : 0.00	DRL MEASURED FROM: GL	GL :
CASING DRILLER : 000	LOGGING UNIT : 8401	
CASING TYPE :	FIELD OFFICE : CALGARY	
CASING THICKNESS: 00	RECORDED BY : S.FORSTER	
BIT SIZE : 12.7	BOREHOLE FLUID : WATER	FILE : PROCESSED
MAGNETIC DECL. : 00	RM : 0	TYPE : 9069C
MATRIX DENSITY : 2.68	RM TEMPERATURE : 0	LOG : 4
FLUID DENSITY : 1.0	MATRIX DELTA T : 173	PLOT : 9069 1D
NEUTRON MATRIX : SANDSTONE	FLUID DELTA T : 690	THRESH: 2500
REMARKS :		
LOGGED THROUGH RODS		

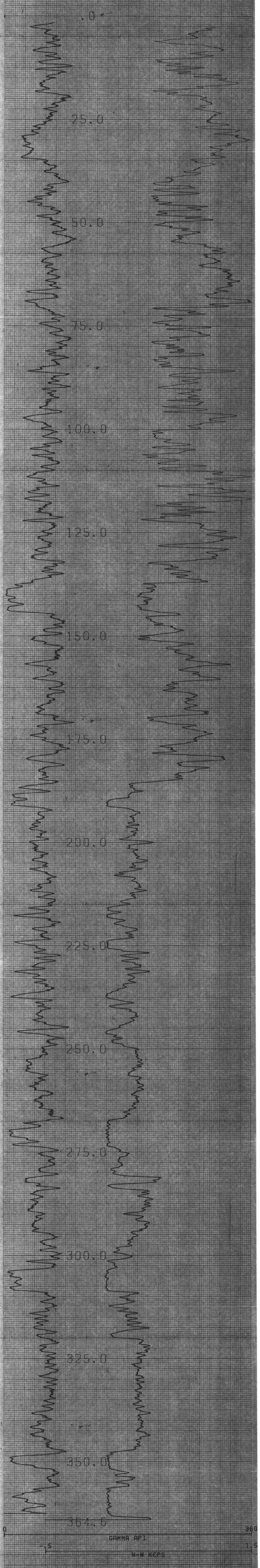
ALL SERVICES PROVIDED SUBJECT TO CGC STANDARD TERMS AND CONDITIONS



TOOL CALIBRATION		TOOL = 9069C	SERIAL NUMBER = 1029		
CAL-DATE	CAL-TIME	SRCE	SENSOR	RESPONSE	STANDARD
0	06/14/88	11:36:05	0	GAMC(NAT)	0.000 CPS
1	06/14/88	11:36:36	0	GAMC(NAT)	0.000 CPS
					0.000 API-GR
					0.000 API-GR

R.H. 1988
FORDING COAL
EAGLE STAGE 6 WEST

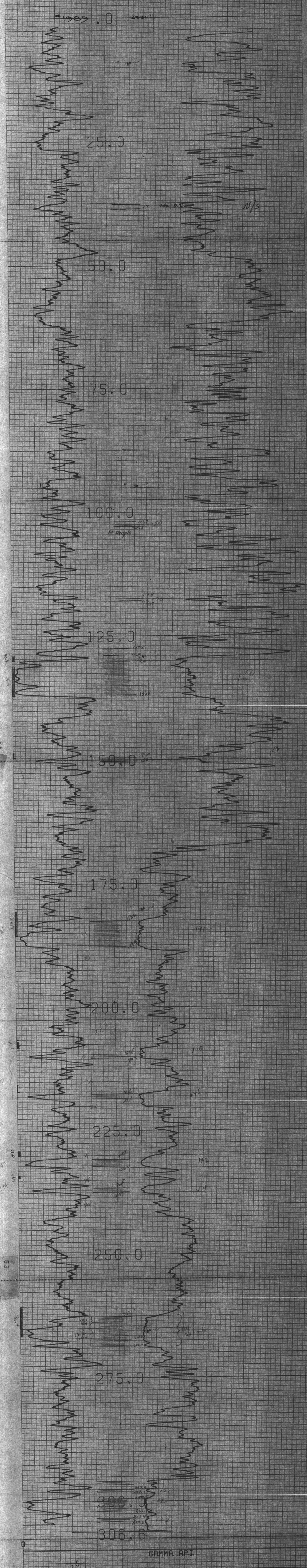
HOLE DIAMETER : 10.0
PROBE # 8059A = 010
SENSOR #1 CAL STD CPS = 152
SENSOR #1 CAL RUN CPS = 191
SENSOR #1 CAL BIAS = 0
DATA VBL2*8 TRUCK # 367
S. FRASER APPL.#7 LI



14990.6
25996.2
2231.1
750

G VBL2 PLOT 06-29-83

R. H. 1989
FORDING COAL
EAGLE STAGE 6 WEST
HOLE DIAMETER = 10.0
PROBE # 9055A - 010
SENSOR #4 CAL STD CPS = 152
SENSOR #4 CAL RUN CPS = 191
SENSOR #4 CAL BIAS = 0
DATA VBL2WA TRUCK # 367
S. FRASER APPL. #7 L1



GAMMA API
N-N KCPS



Century

GAMMA-RES-DENSITY

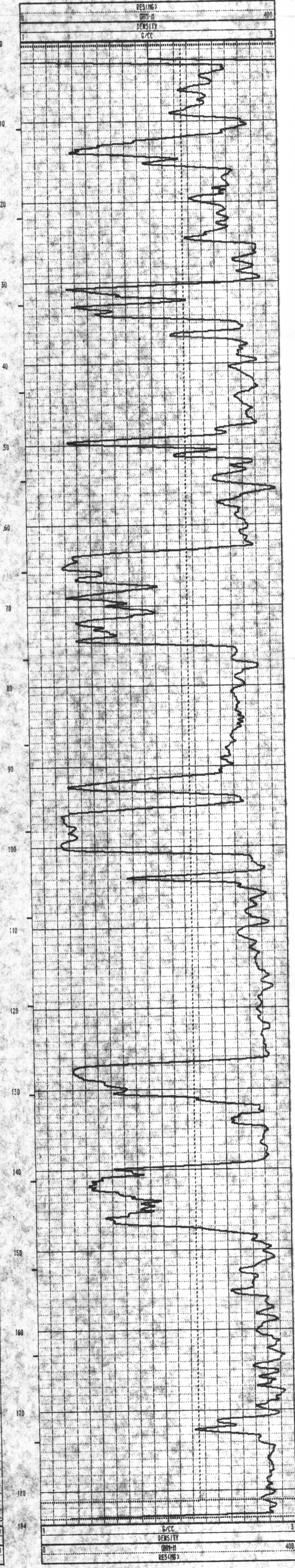
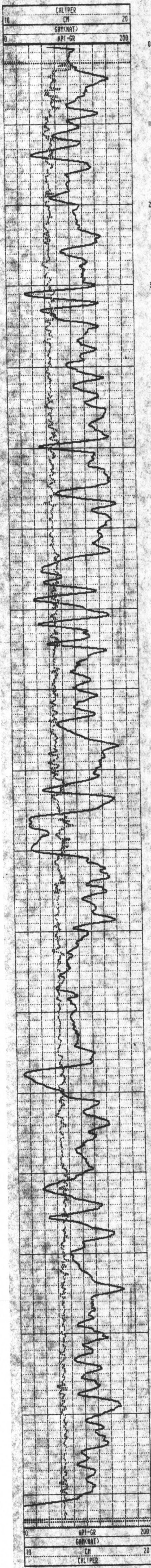
COMPANY : FORDING COAL LTD.
 WELL : RH 1990
 LOCATION/FIELD : EAGLE'S NEST SOUTH PIT
 COUNTY : ELKFORD
 STATE : B.C.
 SECTION :
 DATE : 07/29/88
 DEPTH DRILLER : 180.00 M
 LOG BOTTOM : 183.48
 LOG TOP : 0.36
 CASING DRILLER : 3.00
 CASING TYPE : STEEL
 CASING THICKNESS : 00
 BIT SIZE : 12.00
 MAGNETIC DECL. : 00
 MATRIX DENSITY : 2.64
 FLUID DENSITY : 1.0
 NEUTRON MATRIX : SANDSTONE
 REMARKS :

OTHER SERVICES:

750

TOWNSHIP : RANGE :
 PERMANENT DATUM : ELEVATIONS
 ELEV. PERM. DATUM: KB :
 LOG MEASURED FROM: GROUND DF :
 DRL MEASURED FROM: GL :
 LOGGING UNIT : 8401
 FIELD OFFICE : CALGARY
 RECORDED BY : S. FORSTER
 BOREHOLE FLUID : WATER FILE : ORIGINAL
 RM : 0 TYPE : 9030AA
 RM TEMPERATURE : 0 LOG : 7
 MATRIX DELTA T : 173 PLOT : DEMO 3
 FLUID DELTA T : 690 THRESH: 2500

ALL SERVICES PROVIDED SUBJECT TO CGC STANDARD TERMS AND CONDITIONS



TOOL CALIBRATION			TOOL = 9030AA	SERIAL NUMBER = 420		
CAL-DATE	CAL-TIME	SRCE	SENSOR	RESPONSE	STANDARD	
0	07/18/88	12:30:12	0	GAM(NAT)	0.000 CPS	0.000 API-GR
1	07/18/88	12:29:52	0	GAM(NAT)	0.000 CPS	0.000 API-GR
2	07/19/88	14:02:30	0	DENSITY	5875.000 CPS	1.106 G/CC
3	07/19/88	14:02:30	0	DENSITY	2352.000 CPS	2.120 G/CC
4	07/18/88	12:29:52	0	RES(MG)	0.000 CPS	0.000 QHM-M
5	07/18/88	12:29:52	0	RES(MG)	0.000 CPS	0.000 QHM-M
6	07/19/88	14:13:42	0	CALIPER	290.000 CPS	7.800 CM
7	07/19/88	14:13:42	0	CALIPER	1894.000 CPS	17.800 CM
8	07/18/88	12:29:52	0	DENSITYH	0.000 CPS	0.000 G/CC
9	07/18/88	12:29:52	0	DENSITYH	0.000 CPS	0.000 G/CC
10	07/18/88	12:29:52	0	CALIPERL	0.000 CPS	0.000 CM
11	07/18/88	12:29:52	0	CALIPERL	0.000 CPS	0.000 CM

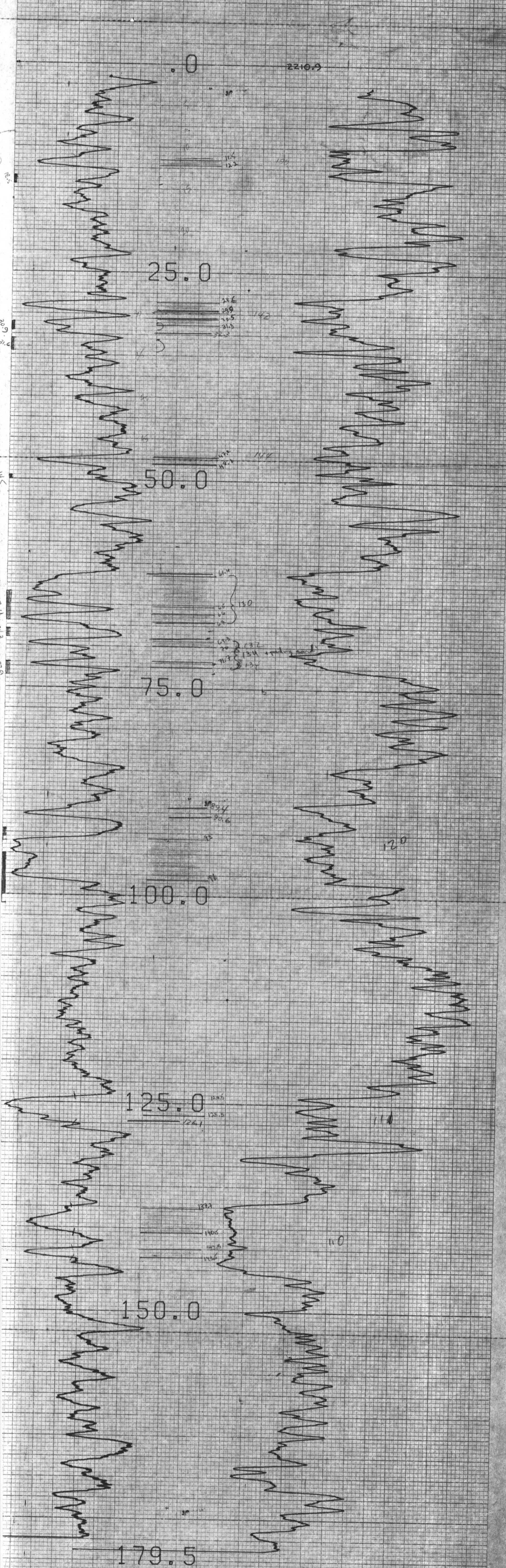
149 031.34
25374.01
2210.9

750

COMPU-LOG V8L2 PLOT 07-26-83

R.H. 1990
F.C.L. JULY 26/88
EAGLE STAGE 6 WEST

HOLE DIAMETER : 07.5
PRobe # 9055A - 232
SENSOR #4 CAL STD CPS = 152
SENSOR #4 CAL RUN CPS = 191
SENSOR #4 CAL BIAS = 0
DATA V8L2#A TRUCK # 367
S. FRASER APPL.#7 L1



CENTURY GEOPHYSICAL CORP. PART NO. 786-0040

CENTURY GEOPHYSICAL CORP. PART NO. 786-0040

CENTURY GEO

GAMMA API 360
N-N KCPS 1.5



Century

GAMMA-RES-DENSITY

COMPANY : FORDING COAL LTD.
 WELL : RH 1991
 LOCATION/FIELD : EAGLE'S NEST SOUTH PIT
 COUNTY : ELKFORD
 STATE : B.C.
 SECTION :
 TOWNSHIP :
 RANGE :
 DATE : 07/29/88
 DEPTH DRILLER : 165.00 M.
 LOG BOTTOM : 164.92
 LOG TOP : 0.12
 CASING DRILLER : 3.00
 CASING TYPE : STEEL
 CASING THICKNESS: 00

OTHER SERVICES:

750

BIT SIZE : 42.00
 MAGNETIC DECL. : 00
 MATRIX DENSITY : 2.64
 FLUID DENSITY : 1.0
 NEUTRON MATRIX : SANDSTONE
 REMARKS :

PERMANENT DATUM :
 ELEV. PERM. DATUM:
 LOG MEASURED FROM: GROUND
 DRL MEASURED FROM:

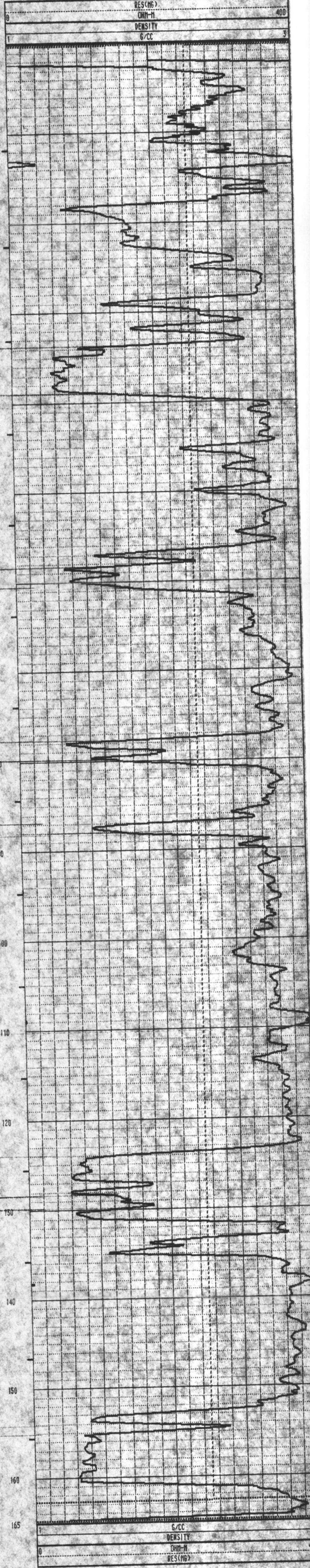
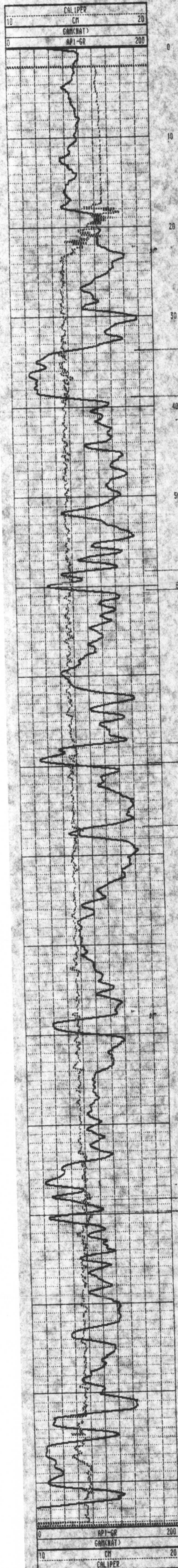
ELEVATIONS
 KB :
 DF :
 GL :

LOGGING UNIT : 8401
 FIELD OFFICE : CALGARY
 RECORDED BY : S. FORSTER

BOREHOLE FLUID : WATER
 RM : 0
 RM TEMPERATURE : 0
 MATRIX DELTA T : 173
 FLUID DELTA T : 690

FILE : ORIGINAL
 TYPE : 9030AA
 LOG : 8
 PLOT : DEMO 3
 THRESH: 2500

ALL SERVICES PROVIDED SUBJECT TO CGC STANDARD TERMS AND CONDITIONS



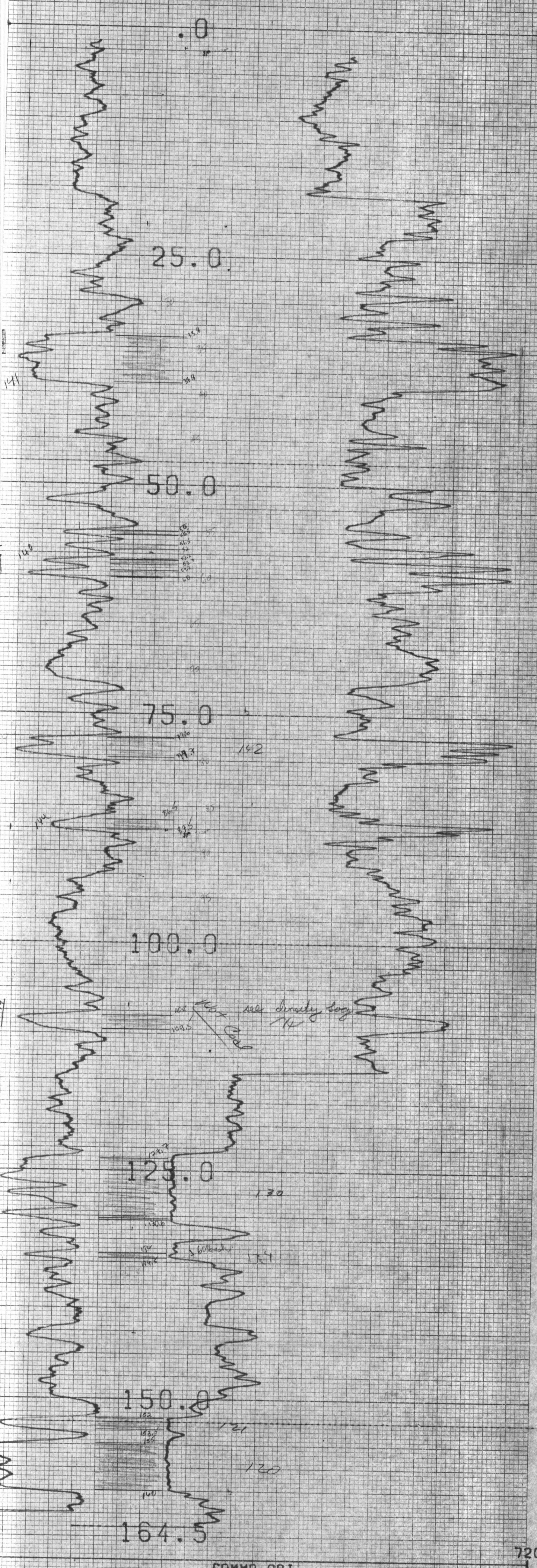
TOOL CALIBRATION TOOL = 9030AA SERIAL NUMBER = 420

CAL-DATE	CAL-TIME	SRCE	SENSOR	RESPONSE	STANDARD	
0	07/18/88	12:30:12	0	GAM(NAT)	0.000 CPS	0.000 API-GR
1	07/18/88	12:29:52	0	GAM(NAT)	0.000 CPS	0.000 API-GR
2	07/19/88	14:02:30	0	DENSITY	5873.000 CPS	1.106 G/CC
3	07/19/88	14:02:30	0	DENSITY	2352.000 CPS	2.120 G/CC
4	07/18/88	12:29:52	0	RES(MG)	0.000 CPS	0.000 OHM-M
5	07/18/88	12:29:52	0	RES(MG)	0.000 CPS	0.000 OHM-M
6	07/19/88	14:13:42	0	CALIPER	290.000 CPS	7.600 CM
7	07/19/88	14:13:42	0	CALIPER	1894.000 CPS	17.800 CM
8	07/18/88	12:29:52	0	DENSITYH	0.000 CPS	0.000 G/CC
9	07/18/88	12:29:52	0	DENSITYH	0.000 CPS	0.000 G/CC
10	07/18/88	12:29:52	0	CALIPERL	0.000 CPS	0.000 CM
11	07/18/88	12:29:52	0	CALIPERL	0.000 CPS	0.000 CM

R.H. 1991
F.C.L. JULY 29/88
EAGLE STAGE 6 WEST

750

HOLE DIAMETER : 07.5
PROBE # 9055A - 232
SENSOR #1 CAL STD CPS = 152
SENSOR #1 CAL RUN CPS = 191
SENSOR #1 CAL BIAS = 0
DATA VBL2WA TRUCK # 367
S. FRASER APPL.#7 LI



GAMMA API

N-N KCPS

720
3.4

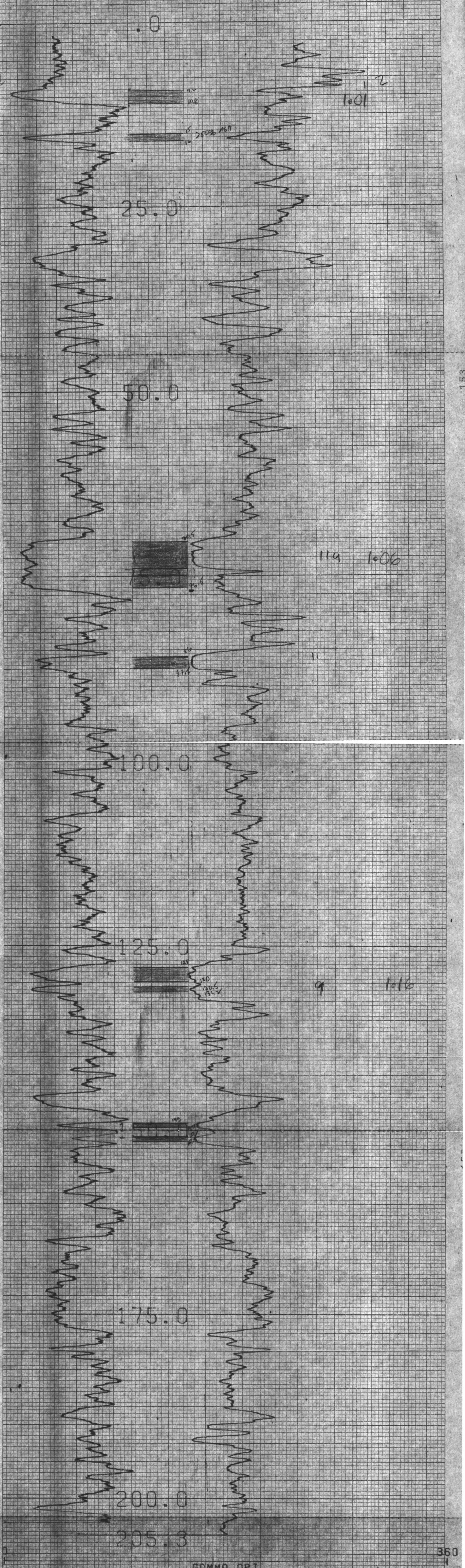
33

35

750

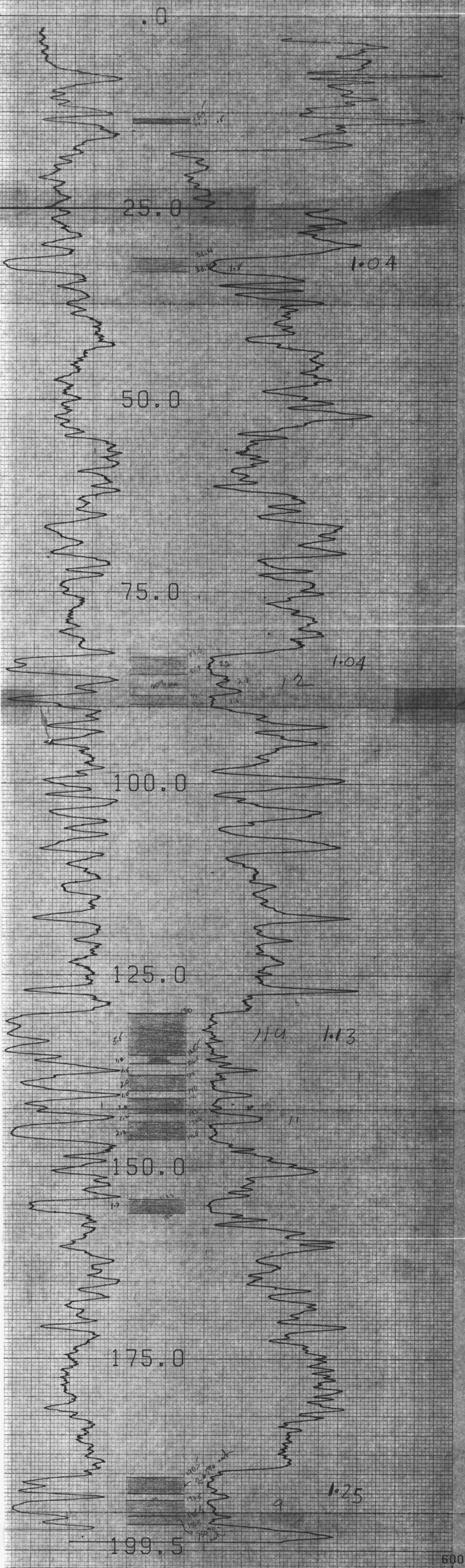
G V8L2 PLDT 07-22-83

R.H. 2076
 F.C.L. JULY 22/88
 HENRETTA
 HOLE DIAMETER : 07.5
 PROBE # 3055A - 232
 SENSOR #1 CAL STD CPS = 152
 SENSOR #4 CAL RIN CPS = 191
 SENSOR #4 CAL BIAS = 0
 DATA V8L2*H TRUCK # 367
 S. FRASER APPL # 7 11



750

R.H. 2077
 F.C.L. JULY 22/88
 HENRETTA
 HOLE DIAMETER = 07.5
 PROBE # 3055A - 232
 SENSOR #4 CAL STD CPS = 152
 SENSOR #4 CAL RUN CPS = 191
 SENSOR #4 CAL QIAS = 0
 DATA V8L2WA TRUCK # 367
 S. FRASER APPL #7 - L1



500
 1.5
 GAMMA API
 N-N KCPS

750

COMPU-LDG V8L2 PLOT 07-16-83

R.H. 2078

F.C.L. JULY 16/88

HENRETTA

HOLE DIAMETER : 10.0

PROBE # 9055A - 010

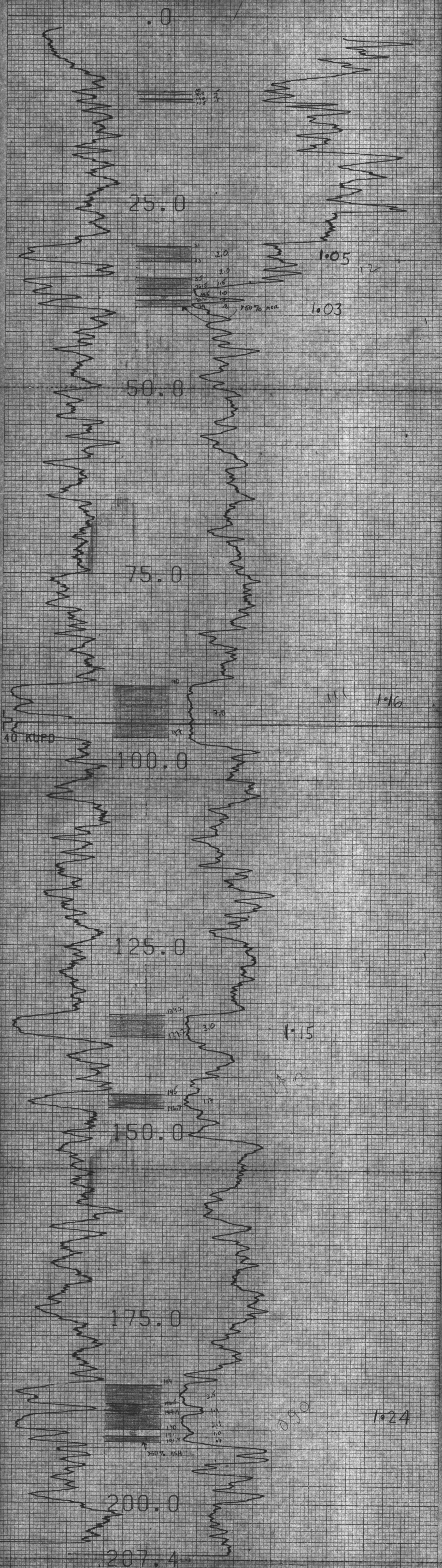
SENSOR #4 CAL STD CPS = 152

SENSOR #4 CAL RUN CPS = 191

SENSOR #4 CAL BIAS = 0

DATA V8L2#A TRUCK # 367

S. FRASER APPL.#7 LI



GAMMA API

N-N KCPS

750

COMPU-LOG V8L2 PLOT 07-15-83

R.H. 2079

F.C.L. JULY 15/88

HENRETTA

HOLE DIAMETER = 10.0

PRODC # 9055A = 010

SENSOR #4 CAL STD CP5 = 152

SENSOR #4 CAL RUN CP5 = 191

SENSOR #4 CAL BIAS = 0

DATA V8L2*RA TRUCK # 367

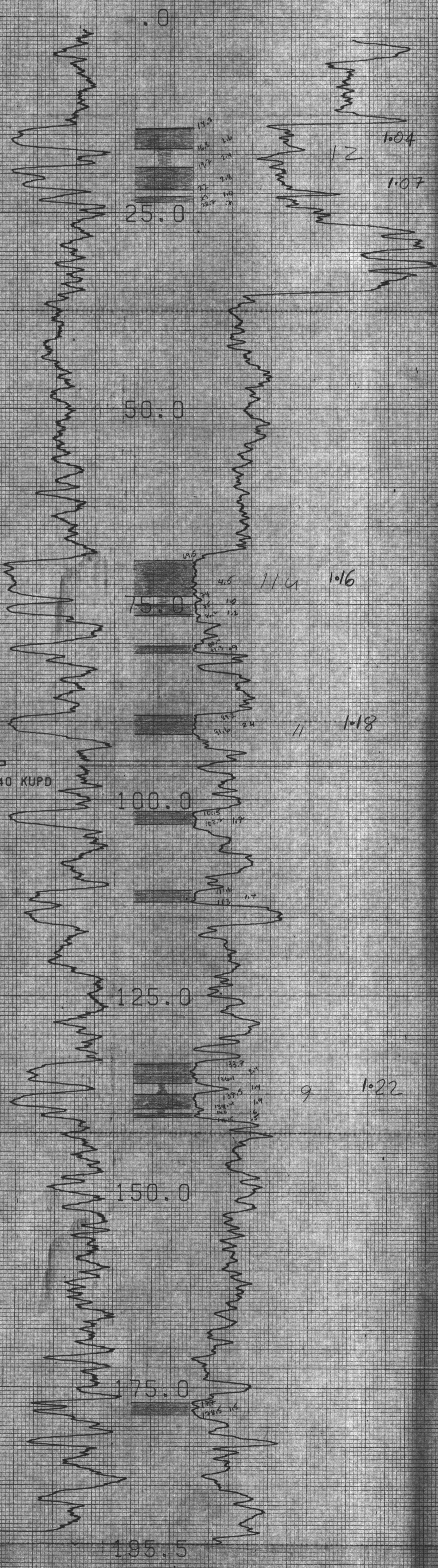
S. FRAZER APPL. #7 LI

CENTURY GEOPHYSICAL CORP. PART NO. 786-0040

CENTURY GEOPHYSICAL CORP. PART NO. 786-0040

CENTURY GEOPHYSICAL CORP. PART NO. 786-0040

CENTURY GEOPHYSICAL CORP. PART NO. 786-0040



GAMMA API

N-N KCPS

31

1.

750

R.H. 2080

F.C.L. JULY 25/88

HENRETTA

HOLE DIAMETER : 07.5

PROBE # 9055A - 232

SENSOR #4 CAL STD CPS = 152

SENSOR #4 CAL RUN CPS = 191

SENSOR #4 CAL BIAS = 0

DATA V8L2WA TRUCK # 367

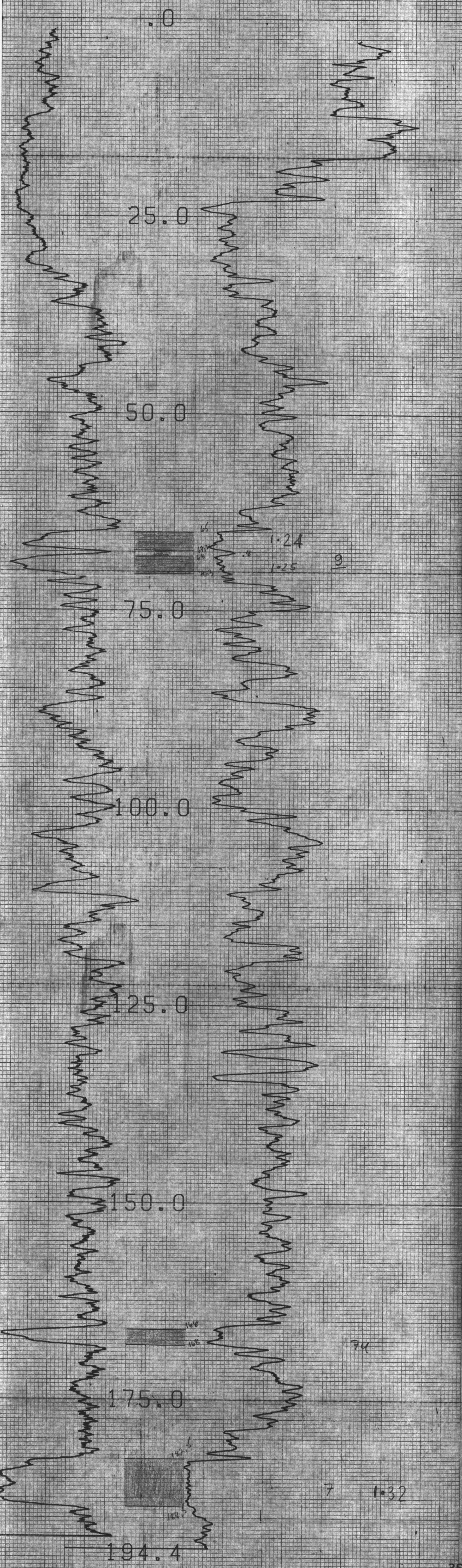
S. FRASER APPL.#7 L1

CENTURY GEOPHYSICAL CORP. PART NO. 786-0040

CENTURY GEOPHYSICAL CORP. PART NO. 786-0040

CENTURY GEOPHYSICAL CORP. PART NO. 786-0040

CENTURY GEOPHYSICAL CORP. PART NO. 786-0040



360
1.5
GAMMA API
N-N KCPS

750

RH 2081

F.C.L

HENRETTA

WELL DIAMETER : 10.0

PROBE # 9055A - 232

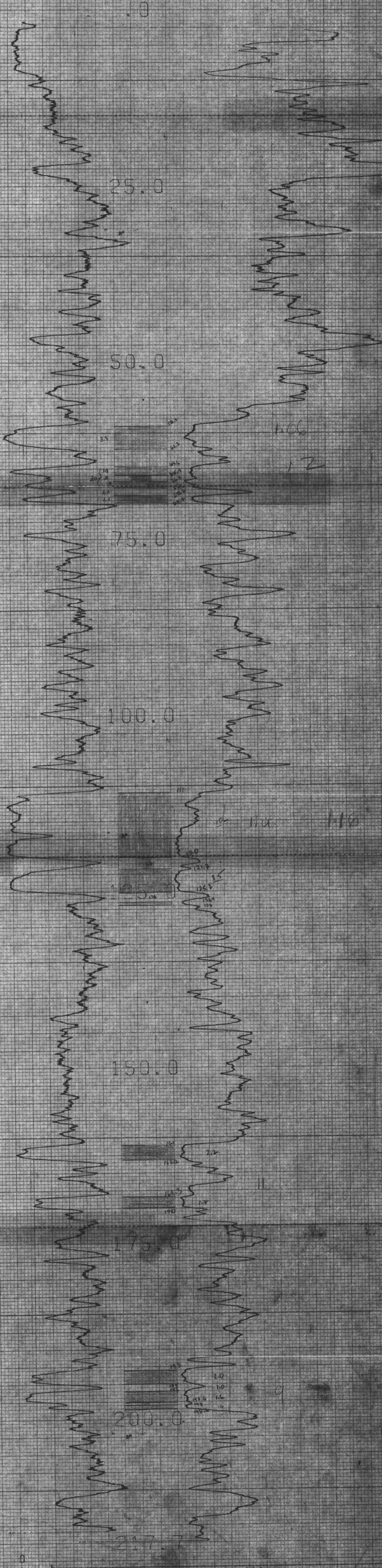
SENSOR #4 CAL STD CPS - 152

SENSOR #4 CAL RUN CPS - 191

SENSOR #4 CAL BIAS - 0

DATE V8L2M9 TRUCK # 367

SPJ SHARMA APPL.#7 LI



GAMMA API

F.C.L 88/07/19

HENR. RH-20802

750

HOLE DIAMETER : 10.0

PROBE # 9055A 232

SENSDR #1 CAL STD CPS = 152

SENSDR #1 CAL RUN CPS = 191

SENSDR #1 CAL BIAS = 0

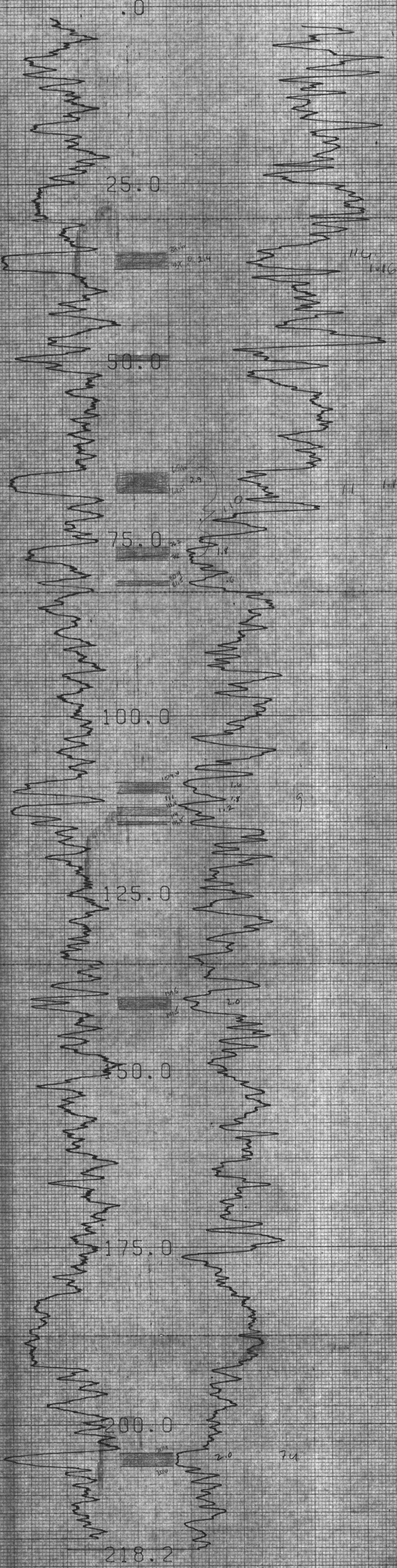
DATA V8L2WA TRUCK # 7920

S. FRASER APPL. # A

123

121

119



GAMMA API

N-N KCPS

7000

750

COMPU-LOG V6L2 PLOT 07-18-83

R.H. 2083

F.C.L. JULY 17/88

HENRETTA

HOLE DIAMETER : 10.0

PROBE # 9055A - 232

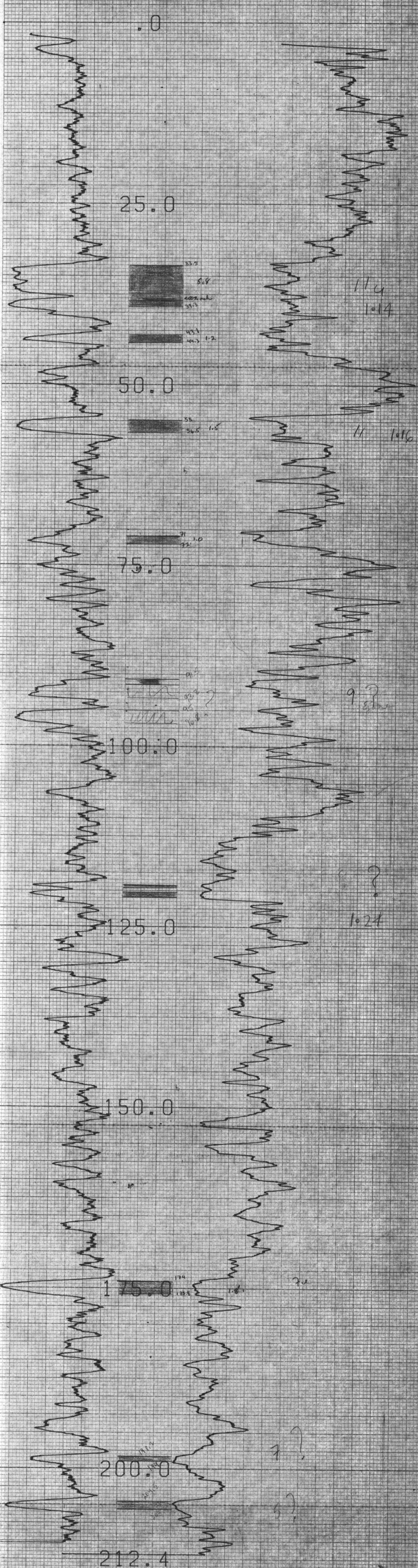
SENSOR #4 CAL STD CPS = 152

SENSOR #4 CAL RUN CPS = 191

SENSOR #4 CAL BIAS = 0

DATA V6L2WA TRUCK # 367

S. FRASER APPL.#7 L1



85

87

2084

750

COMPU-LOG V8L2 PLOT 07-24-83

R.H. 2084

F.C.L. JULY 24/88

HENRETTA

HOLE DIAMETER : 07.5

PROBE # 9055A - 232

SENSOR #4 CAL STD CPS = 152

SENSOR #4 CAL RUN CPS = 191

SENSOR #4 CAL BIAS = 0

DATA V8L2*# TRUCK # 367

S. FRASER APPL.#7 L1

237

0

25.0

50.0

75.0

100.0

125.0

150.0

175.0

200.0

206.2

Remains of
9 scans

119.5
119.4

70

132.7
131.4

1979

1.33

GAMMA API

N-N KCPS

360

1.5

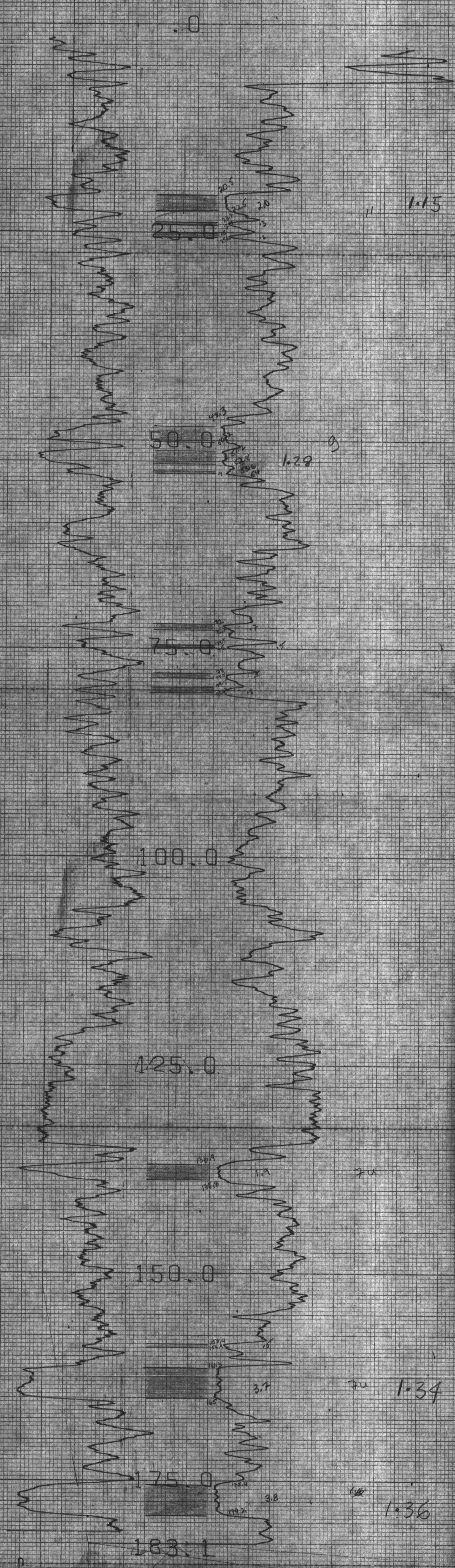
CENTURY GEO

750

COMPY-LOG V8L2 PLOT 07-14-83

2085
F.C.L.
HENRIETTA

HOLE DIAMETER : 10.0
PROBE # 9055A - 010
SENSOR #1 - CAL STD CPS = 152
SENSOR #1 - CAL RUN CPS = 191
SENSOR #1 - CAL BIAS = 0
DATA V8L2xA TRUCK # 367
RAJ SHARMA APPL #7 61



20.5
20.5
20.5
20.5

50.0
49.3
49.3
49.3
49.3

75.0
75.0
75.0
75.0

100.0

125.0

150.0
157.4
157.4
157.4
157.4

175.0
175.0
175.0
175.0

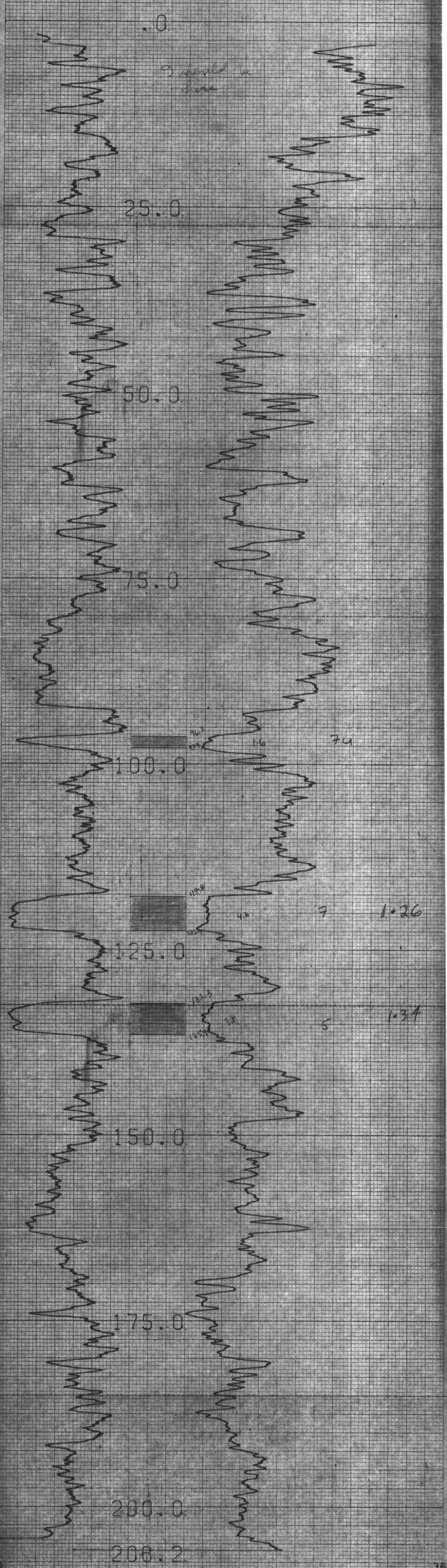
183.1

R.M. 2085
F.C.L. AUG 13/88
HENRETTA

750

HOLE DIAMETER = 07.5
PROBE # 3055A - 010
SENSOR #1 - CAL STD CPS = 152
SENSOR #4 - CAL RUN CPS = 191
SENSOR #2 - CAL BIAS = 0
DATA V8L2*8A TRUCK # 367
S. FRASER APPL.#7 - L1

CENTURY GEOPHYSICAL CORP. PART NO. 786-0040



GAMMA API
N-N KCPS

181

R. H. 208
 F. C. L. AUG. 14/88
 HENRETTA
 HOLE DIAMETER : 07.5
 PROBE # 9055A - 018
 SENSOR #4 CAL STD CPS = 152
 SENSOR #4 CAL RUN CPS = 191
 SENSOR #4 CAL BIAS = 0
 DATA VOL2WA TRUCK # 367
 S. FRASER APPL.#7 L1

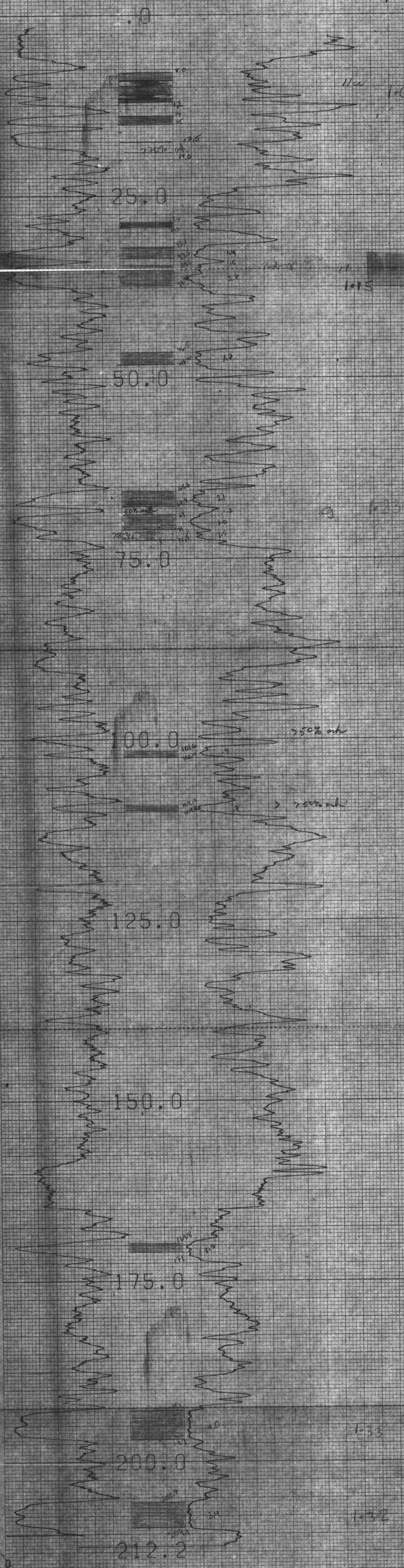
750

CENTURY GEOPHYSICAL CORP. PART NO. 786-0040

CENTURY GEOPHYSICAL CORP. PART NO. 786-0040

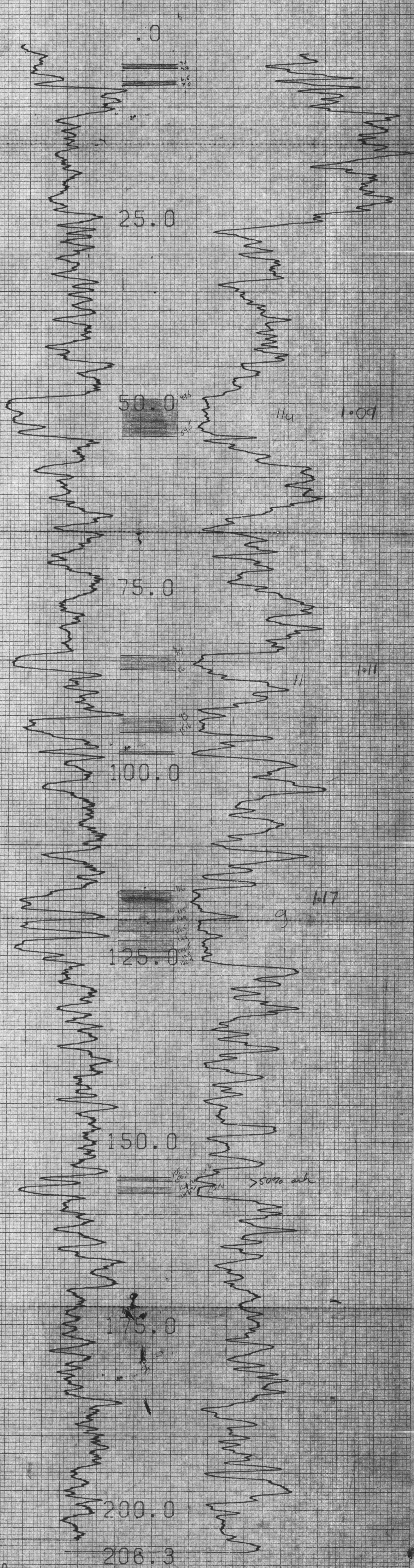
CENTURY GEOPHYSICAL CORP. PART NO. 786-0040

CENTURY GEOPHYSICAL CORP. PART NO. 786-0040



750

RH 2088
F.C.L.
HENRETTA
HOLE DIAMETER : 07.5
PROBE # 9055A - 010
SENSOR #4 CAL STD CPS = 152
SENSOR #4 CAL RUN CPS = 191
SENSOR #4 CAL BIAS = 0
DATA V6L2WA TRUCK # 367
RAJ SHARMA APPL.#7 L1



GAMMA API

N-N KCPS

750

R.H. 2089

F.C.L. NOV. 28/88

HENRETTA

HOLE DIAMETER : 07.5

PROBE # 9058A - 232

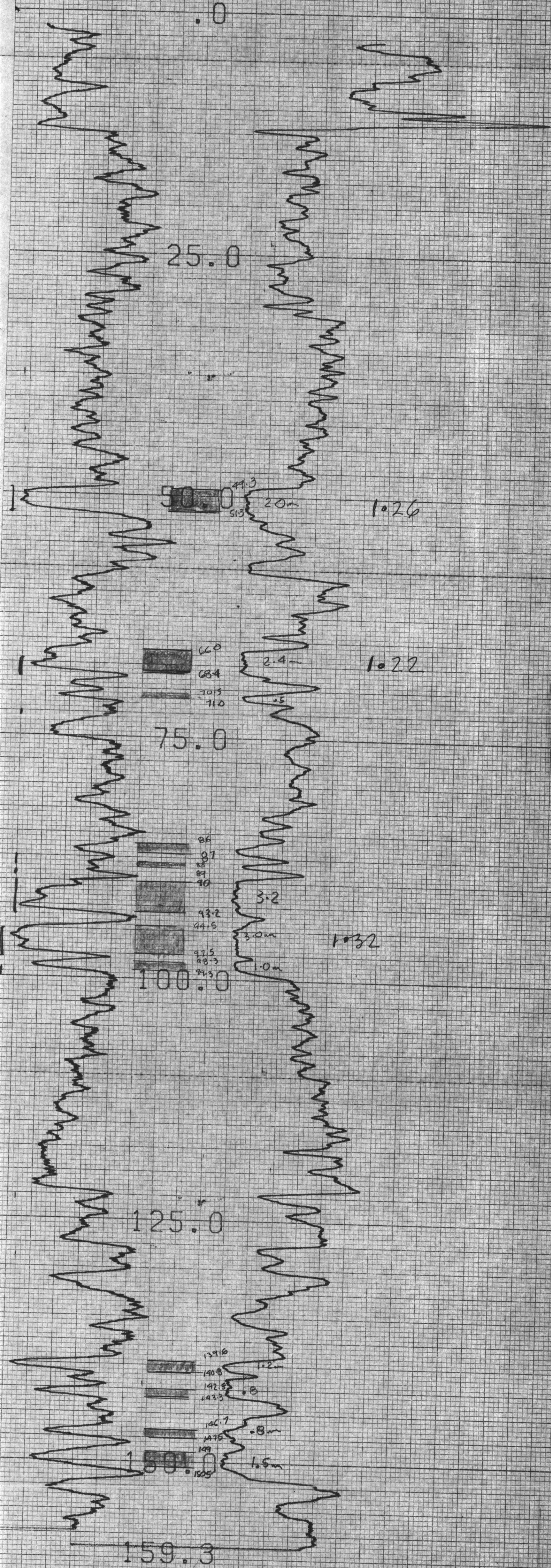
SENSOR #4 CAL STD CPS = 152

SENSOR #4 CAL RUN CPS = 191

SENSOR #4 CAL BIAS = 0

DATA V8L2*#A TRUCK # 367

S. FRASER APPL.#7 L1



CENTURY GEOPHYSICAL CORP. PART NO. 786-0040

CENTURY GEOPHYSICAL CORP. PART NO. 786-0040

750

COMPU-LOG V8L2 PLOT 12-02-88

R.H. 2090

F.C.L.

DEC. 2/88

HOLE DIAMETER : 07.5

PROBE # 9055A - 232

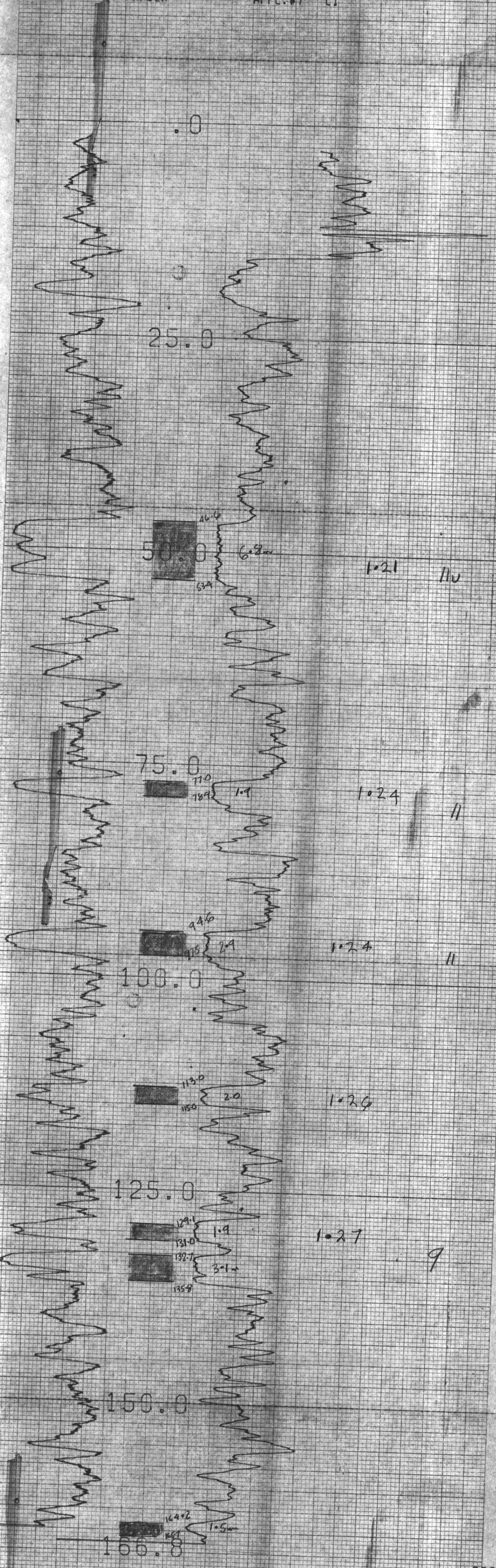
SENSOR #4 CAL STD CPS = 152

SENSOR #4 CAL RUN CPS = 191

SENSOR #4 CAL BIAS = 0

DATA V8L2WA TRUCK # 367

S. FRASER APPL.#7 L1



CENTURY GEOPHYSICAL CORP. PART NO. 786-0040

CENTURY GEOPHYSICAL CORP. PART NO. 786-0040

CENTURY GEOPHYSICAL

GAMMA API

N-N KCPS

750

R.H. 2091

F.C.L. NOV. 23/88

HENRETTA

HOLE DIAMETER : 07.5

PROBE # 9055A = 232

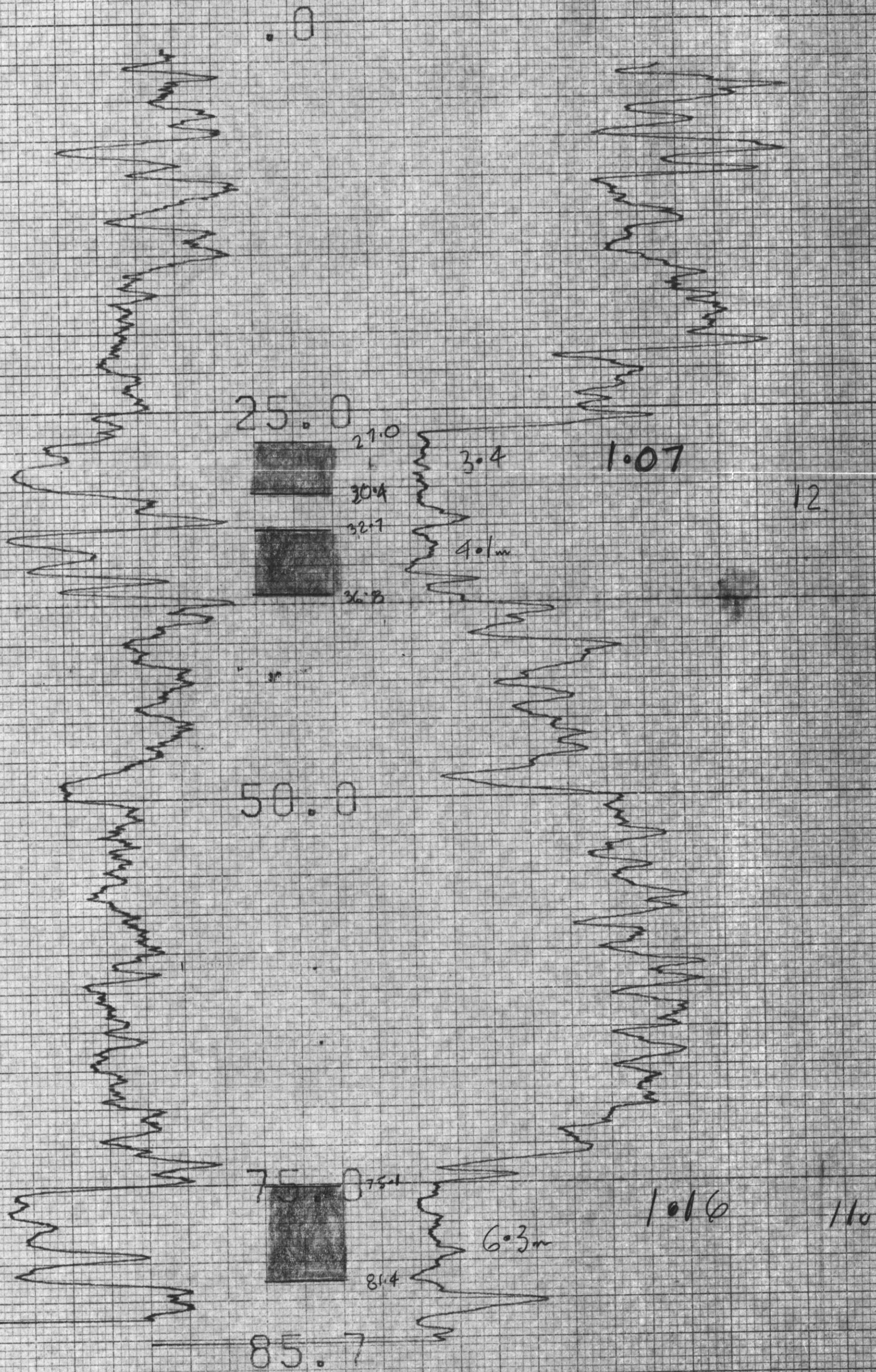
SENSOR #4 CAL STD CPS = 152

SENSOR #4 CAL RUN CPS = 191

SENSOR #4 CAL BIAS = 0

DATA V0L2**A* TRUCK # 367

S. FRASER APPL.#7 LI



GAMMA API

N-N KCPS

750

COMPU-LOG V8L2 PLOT 11-24-86

R.H. 2092

F.C.L. NOV. 24/88

HENRETTA

HOLE DIAMETER : 07.5

PROBE # 9055A - 232

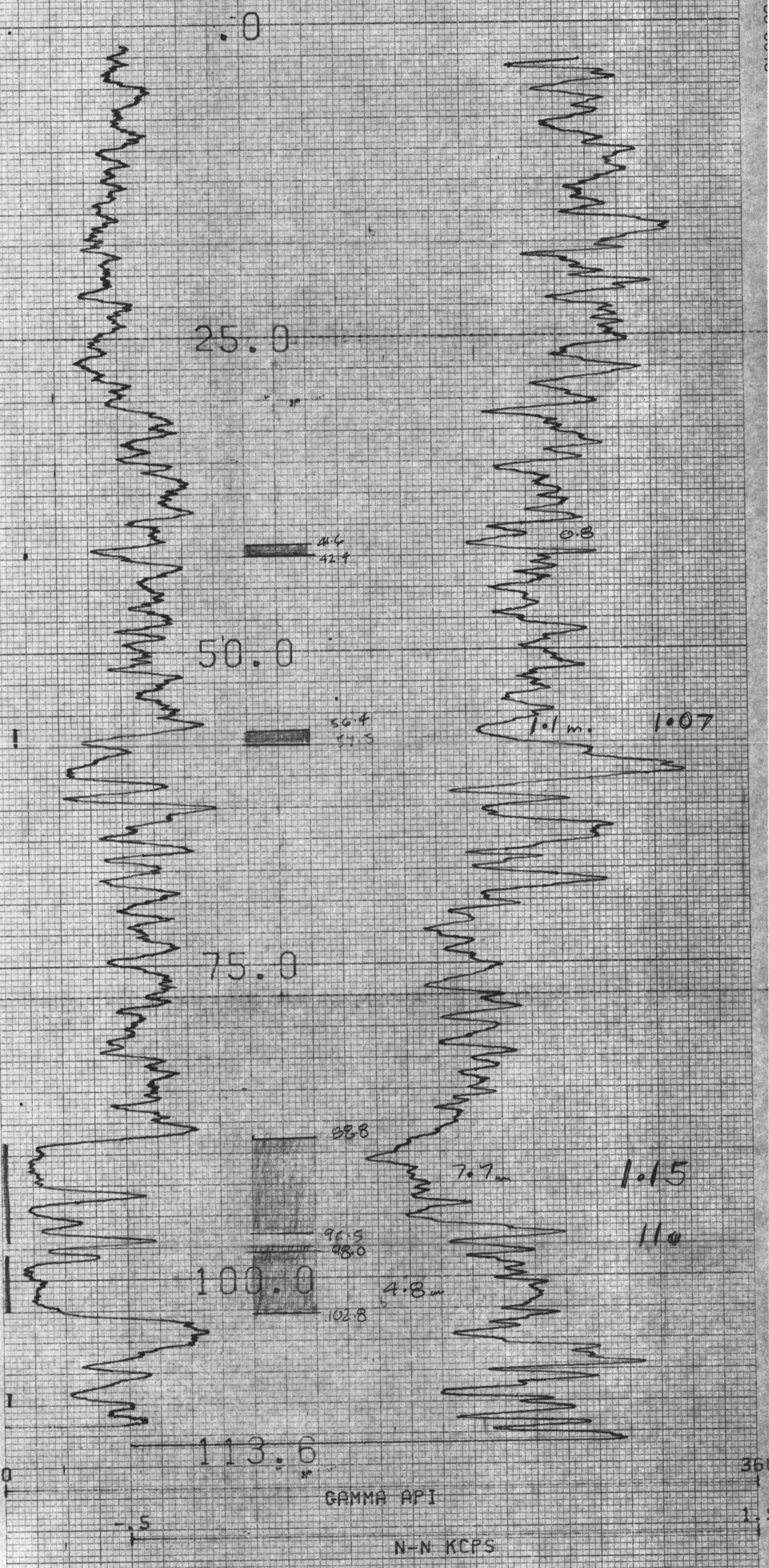
SENSOR #4 CAL STD CPS = 152

SENSOR #4 CAL RUN CPS = 191

SENSOR #4 CAL BIAS = 0

DATA V8L2WA TRUCK # 367

S. FRASER APPL.#7 L1



750

COMPU-LOG VBL2 PLOT 12-16-86

R.H. 2093

F.C.L. DEC. 16/88

HENRETTA

HOLE DIAMETER = 07.5

PROBE # 9055A - 232

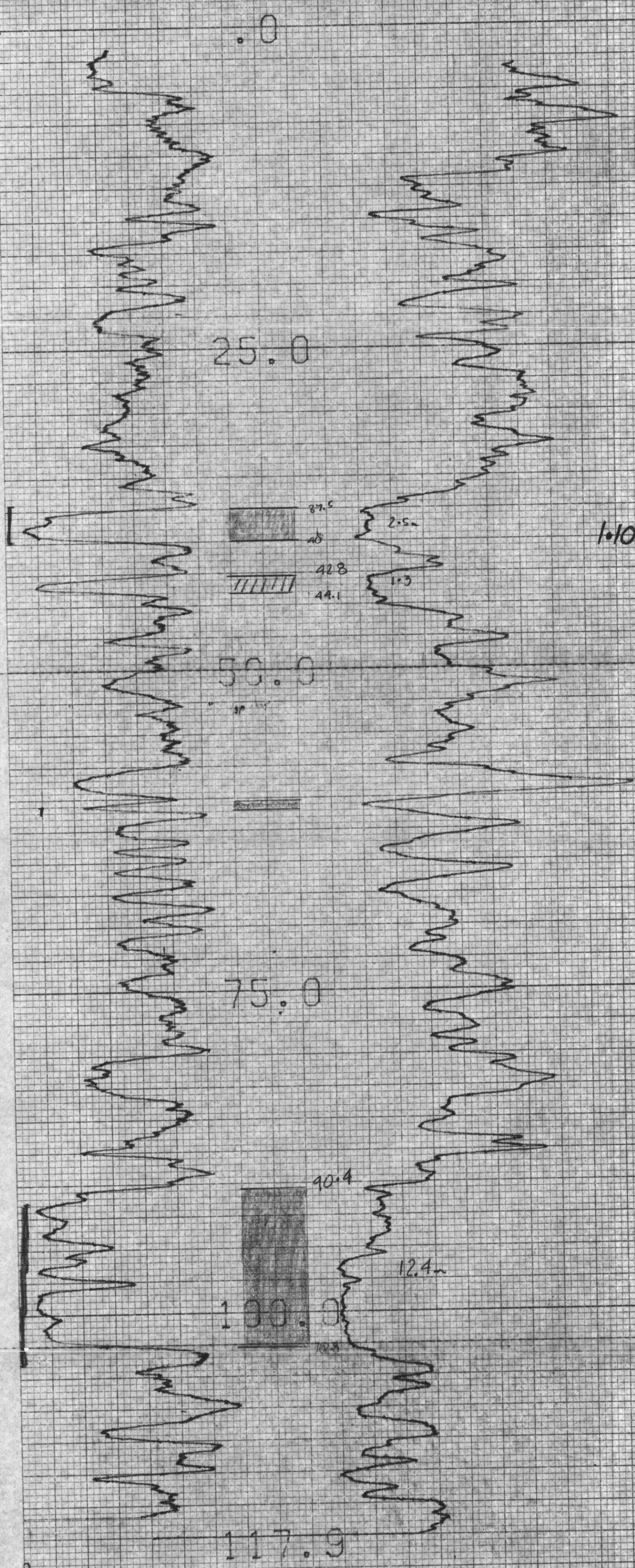
SENSOR #4 CAL STD CPS = 152

SENSOR #4 CAL RUN CPS = 191

SENSOR #4 CAL BIAS = 0

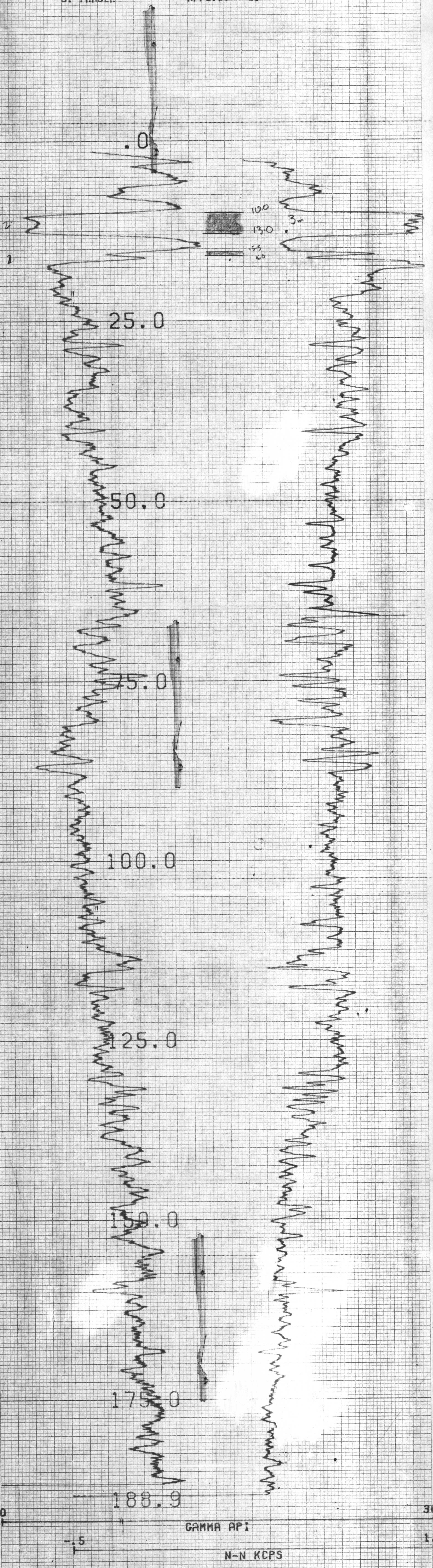
DATA VBL2WA TRUCK # 367

S. FRASER APPL.#7 11



750

R.H. 2094
 F.C.L. JULY 29/88
 WEST CASTLE
 HOLE DIAMETER : 07.5
 PROBE # 9055A - 232
 SENSOR #1 CAL STD CPS = 152
 SENSOR #1 CAL RUN CPS = 191
 SENSOR #1 CAL BIAS = 0
 DATA VBL2WA TRUCK # 367
 S. FRASER APPL.#7 L1



CENTURY GEOPHYSICAL CORP. PART NO. 786-0040

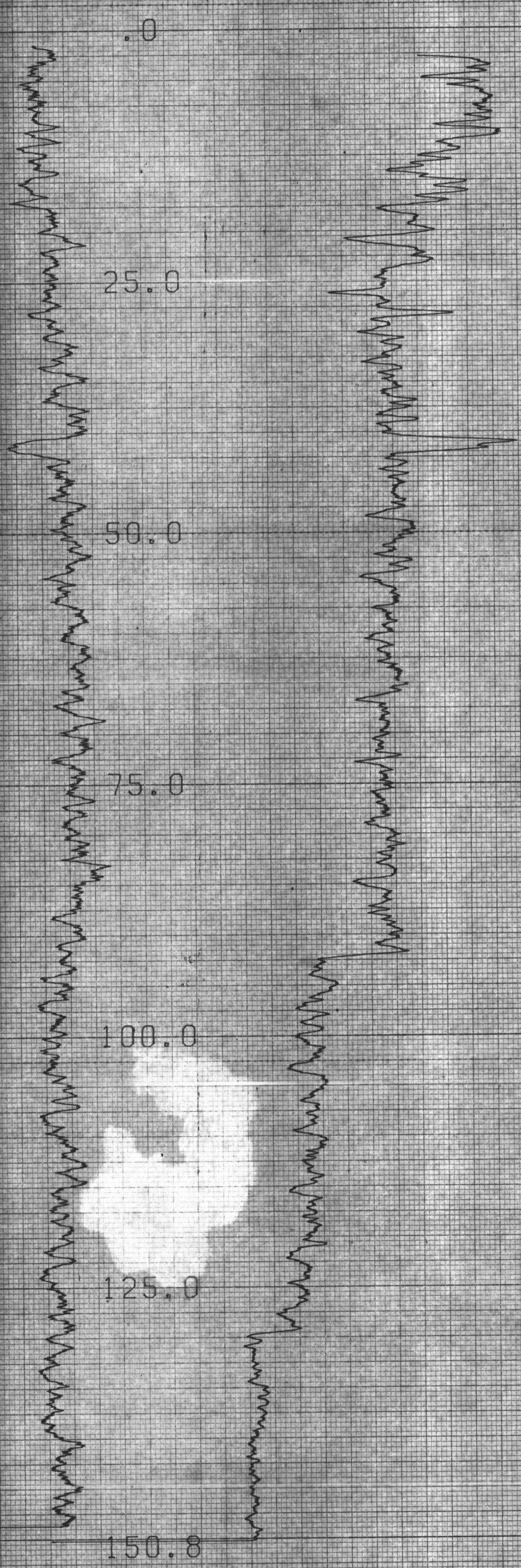
CENTURY GEOPHYSICAL CORP. PART NO. 786-0040

750

COMPU-LOG V6L2 PLOT 07-28-83

R.H. 2096
F.C.L. JULY 29/88
WEST CASTLE

HOLE DIAMETER : 07.5
PROBE # 9055A - 282
SENSDR #4 CAL STD CPS = 152
SENSDR #4 CAL RUN CPS = 191
SENSDR #4 CAL BIAS = 0
DATA V6L2*#A TRUCK # 367
S. FRASER APPL.#7 L1



GAMMA API

N-N KCPS

36

172

750

L2 PLDT 08-05-88

RH 2097

F.C.L.

CASTLE

HOLE DIAMETER = 07.5

PROBE # 9055A - 232

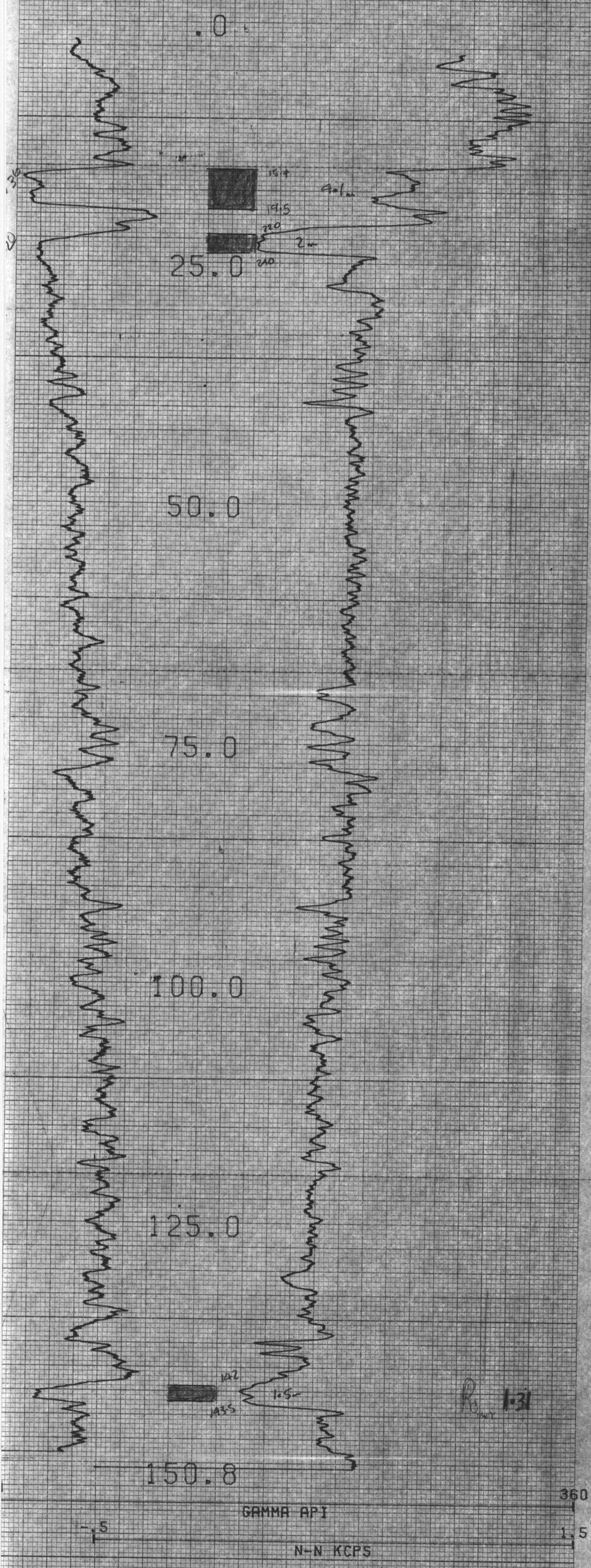
SENSOR #4 CAL STD CPS = 152

SENSOR #4 CAL RUN CPS = 191

SENSOR #4 CAL BIAS = 0

DATA V8L2WA TRUCK # 367

RAJ SHARMA APPL.#7 L1



329

329

750

COMPU-LOG VBL2 PLOT 08-03-83

RH 2098

F.C.L

CASTLE

HOLE DIAMETER : 07.5

PROBE # 9055A - 232

SENSOR #1 CAL STD CPS = 152

SENSOR #1 CAL RUN CPS = 191

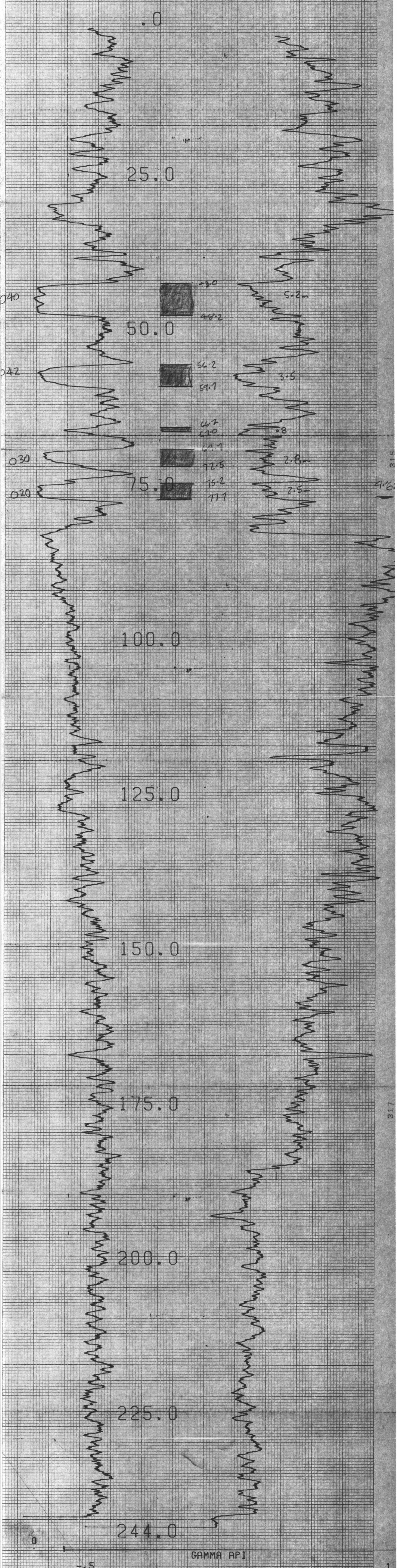
SENSOR #1 CAL BIAS = 0

DATA VBL2WA

TRUCK # 367

RAJ SHARMA

APPL.#7 L1



317

1.

750

RH 2099

F.C.L

CASTLE

HOLE DIAMETER : 07.5

PROBE # 9055A - 232

SENSOR #1 CAL STD CPS = 152

SENSOR #1 CAL RUN CPS = 191

SENSOR #1 CAL BIAS = 0

DATA V8L2WA

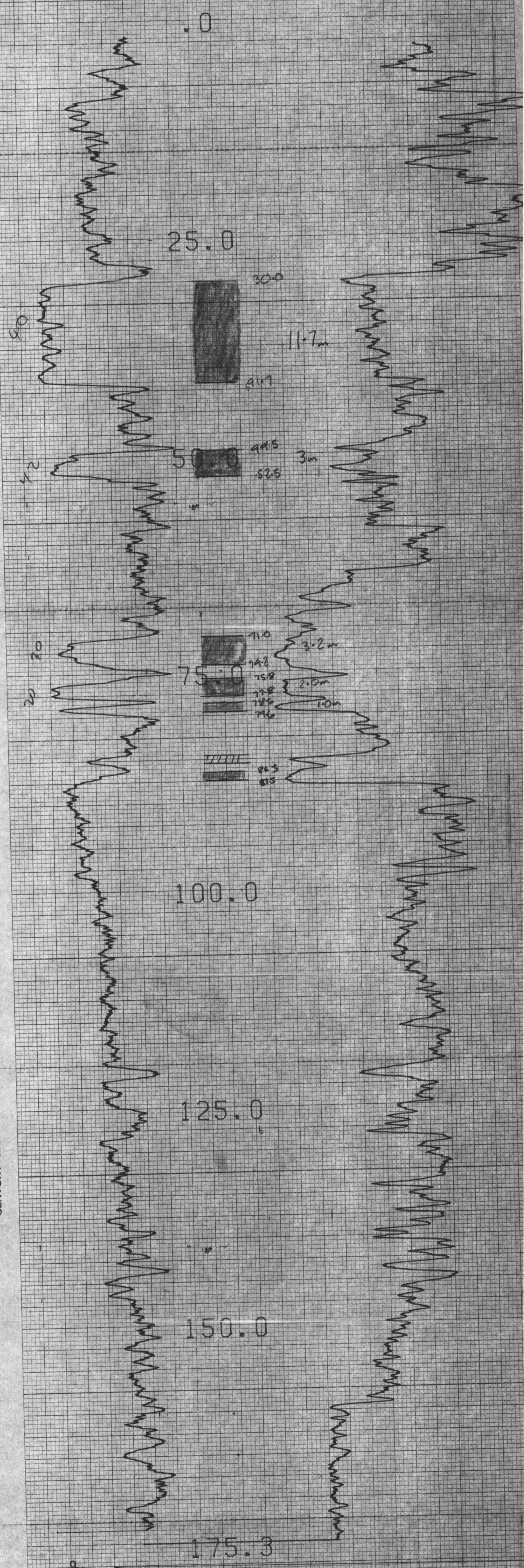
TRUCK # 367

RAJ SHARMA

APPL.#7 L1

CENTURY GEOPHYSICAL CORP. PART NO. 786-0040

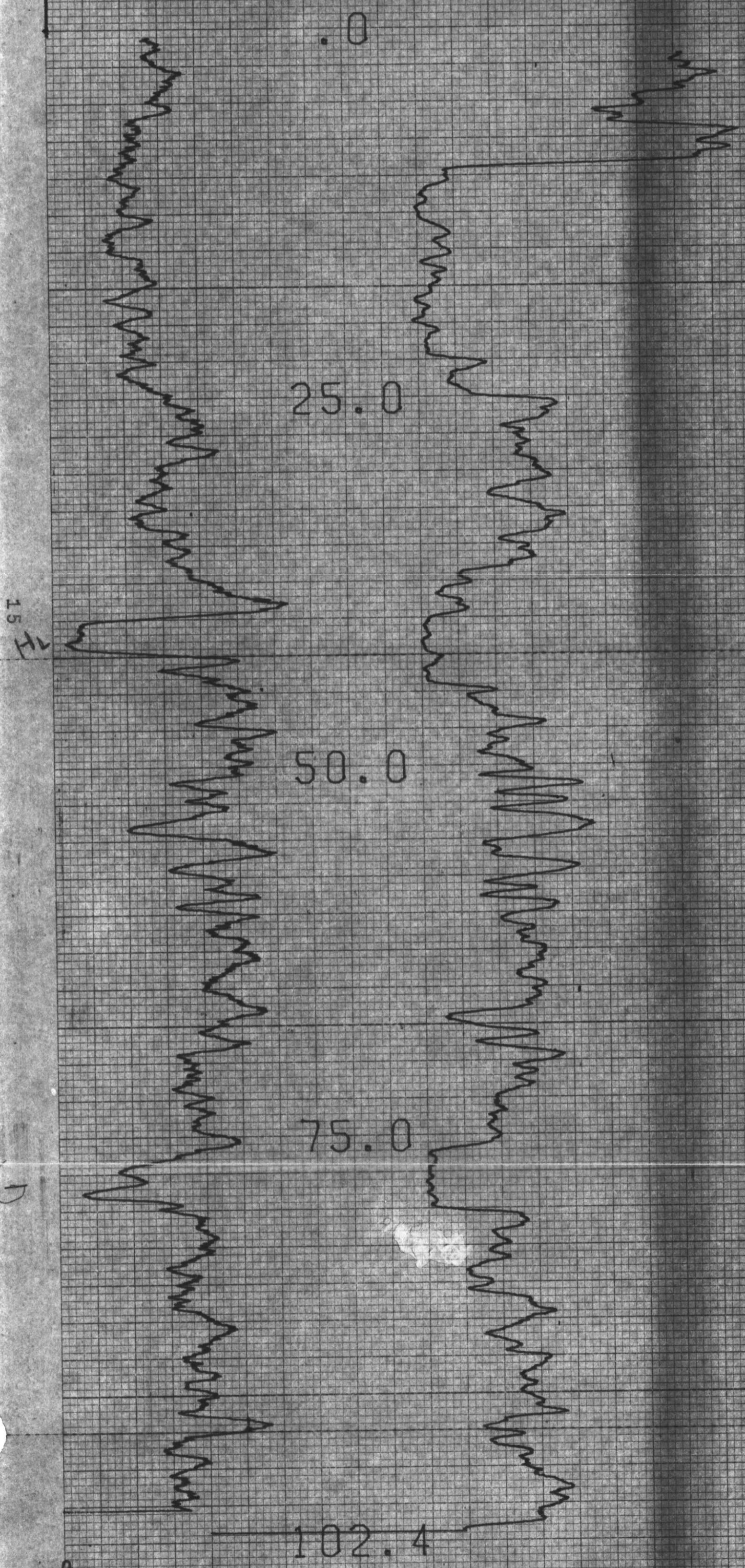
CENTURY GEOPHYSICAL CORP. PART NO. 786-0040



750

RH2128
FORDING
LAKEPIT

HOLE DIAMETER : 10.0
PROBE # 9055A - 010
SENSDR #4 CAL STD CPS = 152
SENSDR #4 CAL RUN CPS = 191
SENSDR #4 CAL BIAS = 0
DATA V8L2WA TRUCK # 367
BUCK DWENS APPL. #7 L1



GAMMA API

N-N KCPS

15