

PRIMARY DRILLING.  
IN COAL BEARING  
FRASER RIVER FM.  
P. GRAHAM

1978

938-9/16

OPEN FILE

766

Preliminary Results of Drilling in the Coal-Bearing  
Fraser River Formation, Quesnel, British Columbia

NTS 93B/9W, 93B/16W

Peter S.W. Graham  
Institute of Sedimentary and Petroleum Geology, Calgary

1978

The Tertiary Fraser River Formation occurs as a narrow belt of weakly lithified clastic sediments along the present Fraser River, from Prince George to 38 km south of Quesnel. A preliminary summary of the geology and coal resource potential of the formation is given in Graham (1978). Results of preliminary work in 1977 were sufficiently promising that a small scale coring program was launched in September 1978 to obtain additional information on the Australian member of the Fraser River Formation near Quesnel. Three holes were drilled for a combined thickness of 610 m. Hole Q-1 (52°43'10"N, 122°26'05"W) was drilled near Australian Creek 30 km south of Quesnel (Figure 1). Hole Q-2 (52°57'48"N, 122°29'25"W) and Q-3 (52°57'25"N, 122°28'20"W) were drilled 1400 m apart on Red Bluff directly south of Quesnel townsite (Figure 2). Geophysical and lithological logs for holes Q-1 to Q-3 are included in this report (Figures 3, 4 and 5). A more complete study is in progress and results of this will be published at a later date.

The author is indebted to B.R. Cormier of the G.S.C. for his core description and many helpful suggestions.

Reference

Graham, P.S.W.

1978: Geology and Coal Resources of the Tertiary sediments, Quesnel-Prince George area, British Columbia; Geol. Surv. Can., Current Research, Paper 78-1B, p. 59-64.

OPEN FILE  
DOSSIER PUBLIC  
599  
Geological Survey  
Commission Géologique  
Ottawa

766

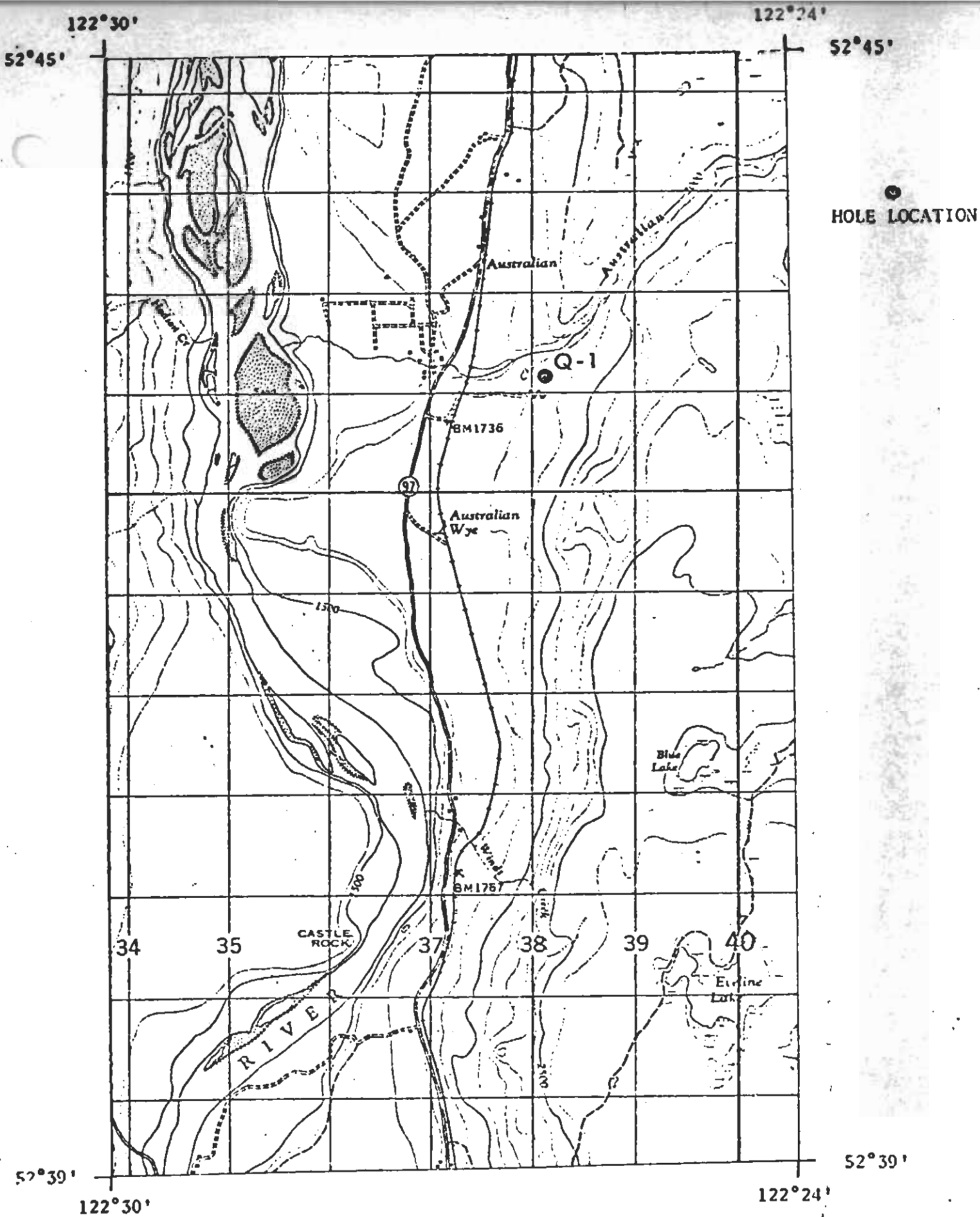


Figure 1  
Scale 1:50 000

NTS:93 B 9 W

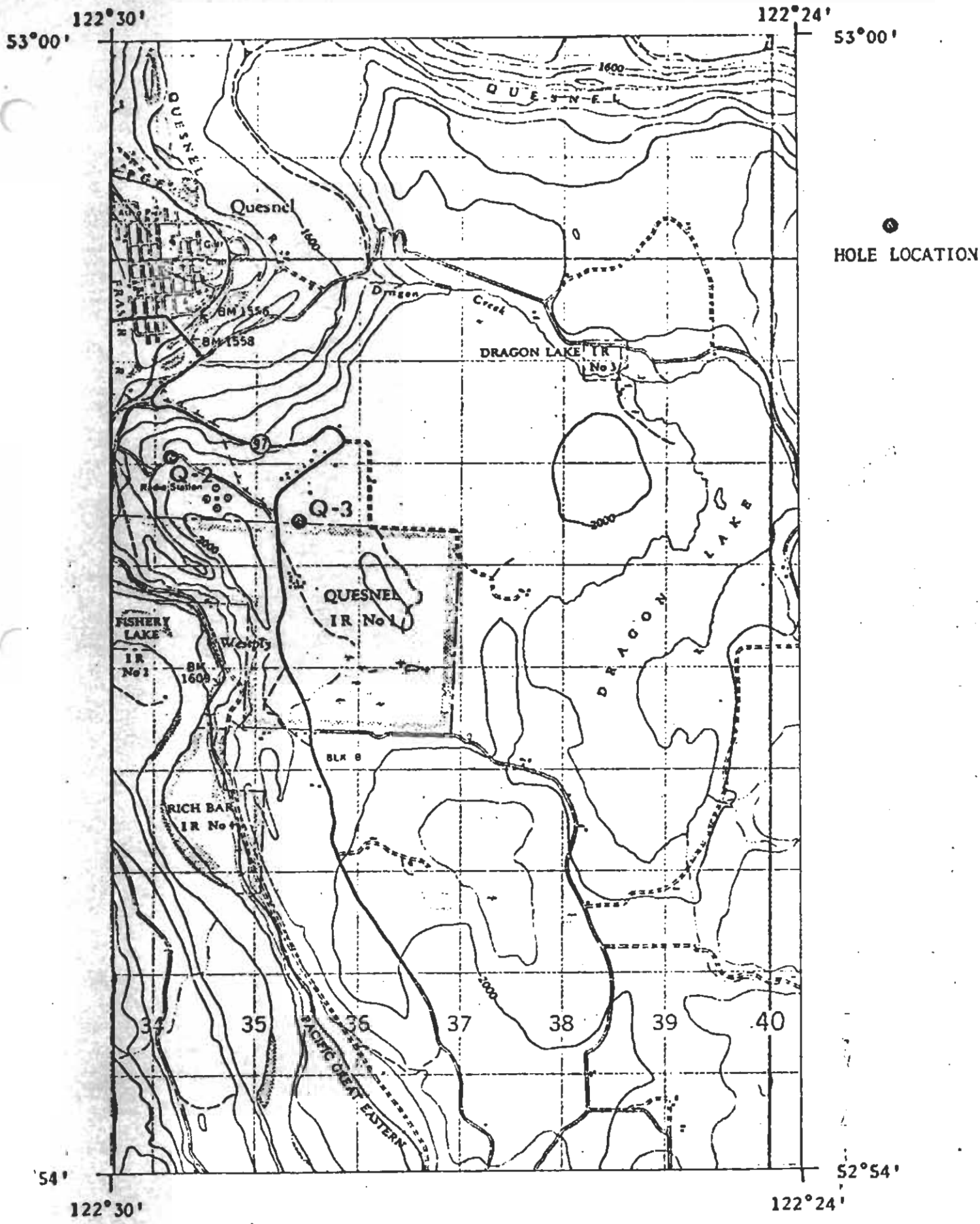


Figure 2  
Scale 1:50 000

NTS:93 B16 W







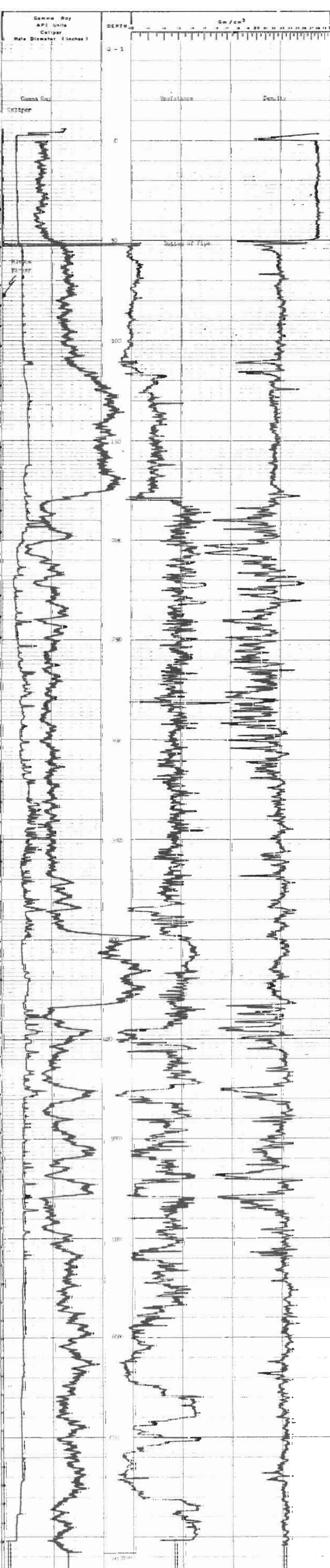


7-66

parted coal seam

<b>CANADIAN ARCTIC SYSTEMS LTD.</b> <b>GAMMA DENSITY &amp; RESISTANCE</b>	
COMPANY: <b>DOMINION ENERGY OF CANADA</b> WELL: <b>2-1</b> FIELD: <b>AUSTRIAN SOLD QUAD</b> PROVINCE: <b>BRITISH COLUMBIA</b> LOG MEASURED FROM: <b>GL</b> TO: <b>11</b> FEET FROM: <b>0</b> LOGGING MEASURED FROM: <b>GL</b> TO: <b>11</b> FEET FROM: <b>0</b>	
LOG NO.: <b>27</b> DATE: <b>27 SEPTEMBER 72</b> LOGGING TIME: <b>11:00 AM</b> LOGGING BY: <b>...</b>	LOG NO.: <b>...</b> DATE: <b>...</b> LOGGING TIME: <b>...</b> LOGGING BY: <b>...</b>

EQUIPMENT DATA				LOGGING DATA			
Run No.	106	Run No.	106	Run No.	106	Run No.	106
Tool Model No.	...	Tool Model No.	...	Tool Model No.	...	Tool Model No.	...
Collimator	...	Collimator	...	Collimator	...	Collimator	...
Tube	...	Tube	...	Tube	...	Tube	...
Length	...	Length	...	Length	...	Length	...
Weight	...	Weight	...	Weight	...	Weight	...
Source Model	...	Source Model	...	Source Model	...	Source Model	...
Serial No.	...	Serial No.	...	Serial No.	...	Serial No.	...
Isotope	...	Isotope	...	Isotope	...	Isotope	...
Strength	...	Strength	...	Strength	...	Strength	...



Legend for log symbols:

- Black box: Solid
- White box: Open
- Box with dots: ...
- Box with horizontal lines: ...
- Box with vertical lines: ...
- Box with diagonal lines: ...
- Box with cross-hatch: ...
- Box with wavy lines: ...
- Box with irregular pattern: ...

Log description text (partially legible):

0-100 ft: ...  
 100-150 ft: ...  
 150-200 ft: ...  
 200-250 ft: ...  
 250-300 ft: ...  
 300-350 ft: ...  
 350-400 ft: ...  
 400-450 ft: ...  
 450-500 ft: ...  
 500-550 ft: ...  
 550-600 ft: ...  
 600-650 ft: ...  
 650-700 ft: ...  
 700-750 ft: ...  
 750-800 ft: ...  
 800-850 ft: ...  
 850-900 ft: ...  
 900-950 ft: ...  
 950-1000 ft: ...

x 8 feet