

NTS 92-P-14

HAND CASEK  
MISC MAPS and  
CROSS-SECTIONS

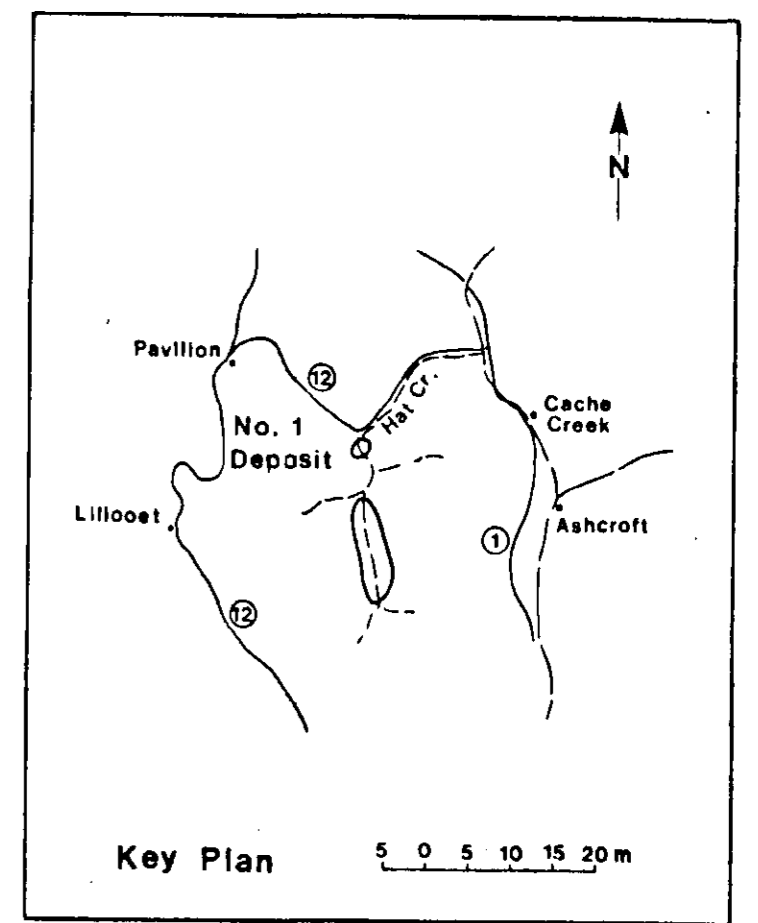
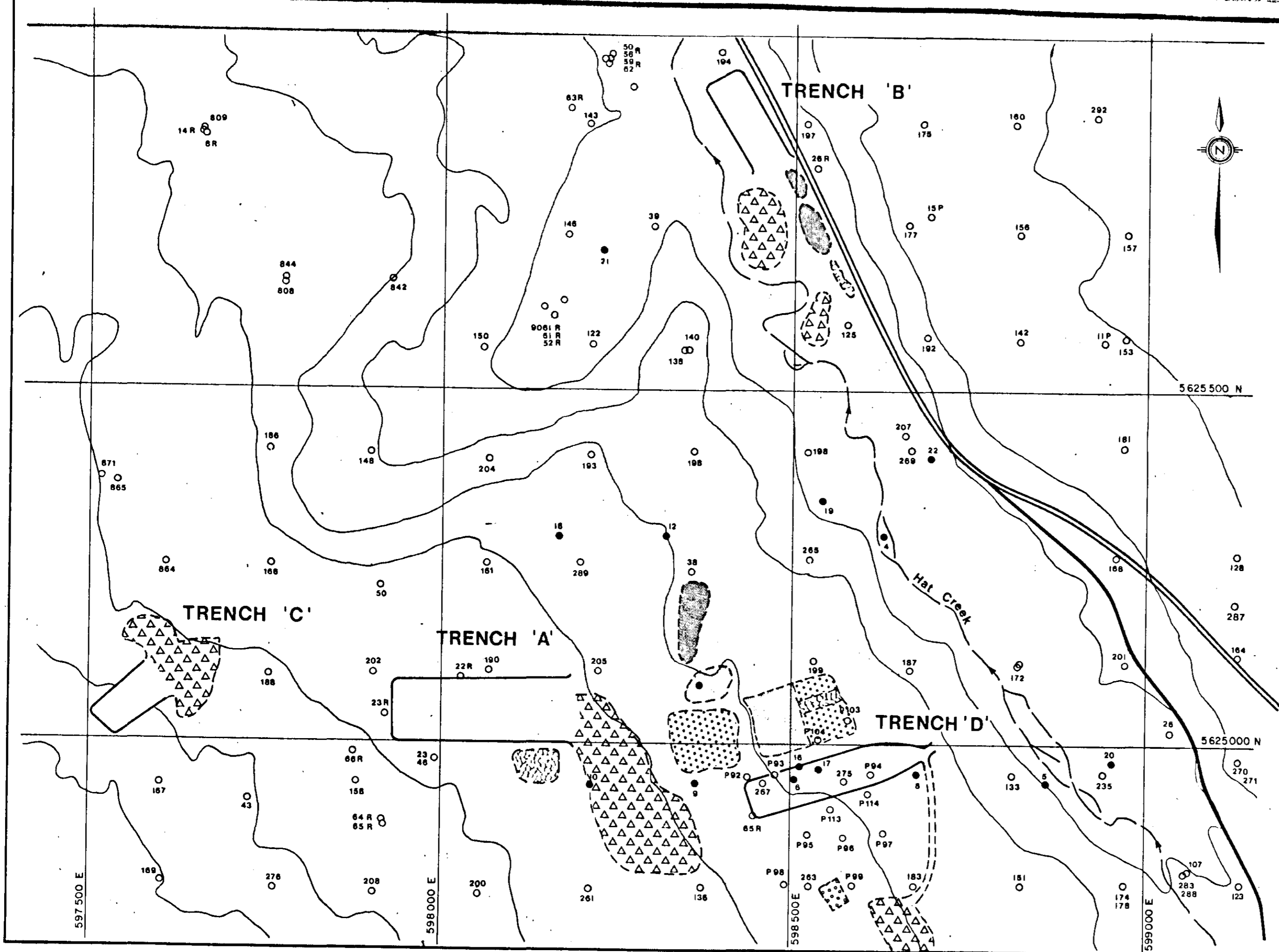
**OPEN FILE**

40001  
82B

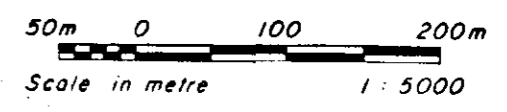
00809

Maps Only

809



- LEGEND**
- Coal Dump
  - Low Grade Coal Dump
  - Coaly Waste Dump
  - Overburden Dump
  - Topsoil Dump
  - Medicine Creek Clay Leachate Pile

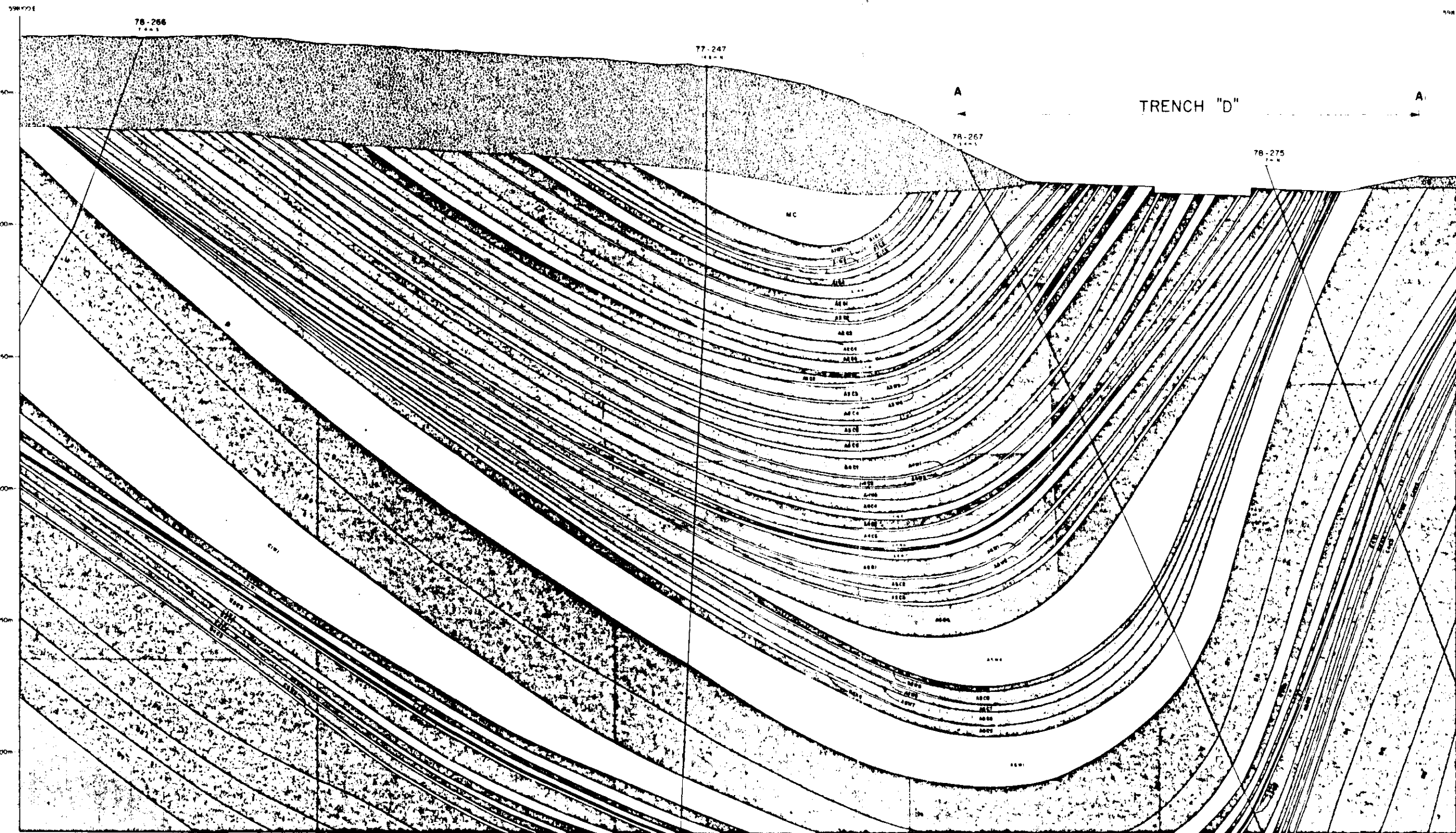


B. C. HYDRO  
 HAT CREEK PROJECT  
 MINING FIELD PROGRAM 1982





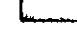
FIGURE 1  
 GENERAL LOCATION PLAN ①

Feb. 1982

809



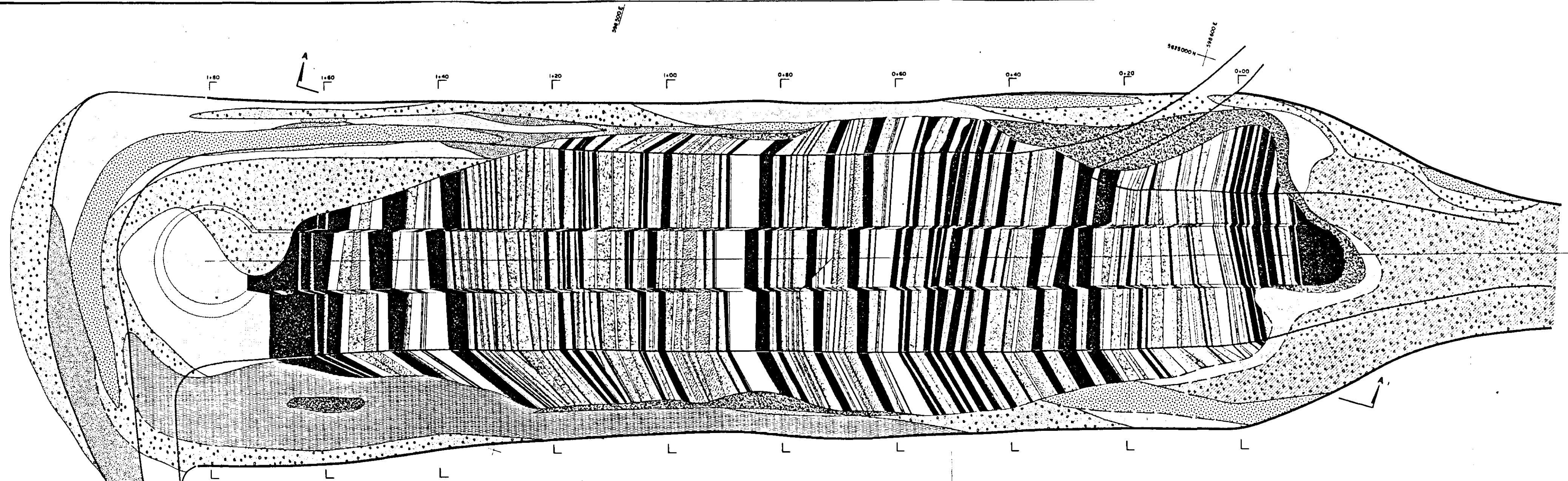
LEGEND

-  OVERBURDEN - clay, silt, gravel and boulders
-  MEDICINE CREEK FORMATION - bentonitic claystone and siltstone
-  HAT CREEK FORMATION WASTE BEDS - mainly claystone and siltstone with intercalated coal
-  HAT CREEK FORMATION COAL BEDS - mainly coal with intercalated siltstone and claystone
-  COLDWATER FORMATION - siltstone, claystone, sandstone, conglomerate, minor coal

809 (2)







SCALE IN METERS

B C HYDRO  
 HAT CREEK PROJECT  
 MINING FIELD PROGRAM 1982  
 FIGURE 5  
 GEOLOGICAL CROSS SECTION "Q"  
 CUTTING ACROSS TRENCH "D"

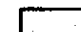









**LEGEND**

**SURFICIAL DEPOSITS**

-  DENSE CLAYS
-  TILL - Dense clays with angular to subangular gravels and boulders (unstratified)
-  LOOSE SILTS AND CLAYS
-  LOOSE SILTS AND CLAYS WITH SUBANGULAR TO SUBROUNDED PEBBLES, GRAVELS AND BOULDERS.
-  GLACIO FLUVIAL BED - Clean sands with rounded to subrounded pebbles, gravels and cobbles.
-  LACUSTRINE SILTS

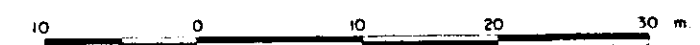
**BEDROCK**

-  MEDICINE CREEK FORMATION
-  OXIDIZED COAL MIXED WITH SOILS
-  WASTE BEDS CONSISTING OF CLAYSTONE, SILTSTONE, FINE GRAINED TO MEDIUM GRAINED SANDSTONE.
-  CARBONACEOUS CLAYSTONE
-  SHALY COAL, DARK GREY EARTHY LOOKING, GENERALLY THINLY BEDDED TO LAMINATED
-  MASSIVE COAL, BLACK TO DARK GREY, LUSTROUS, VISIBLE VITRINS, OCCASIONALLY PLATY AND THICKLY BEDDED.

-  ASH BED
-  FAULT

5624900N

Note: For cross section A - A, refer to dwg. Fig. 5



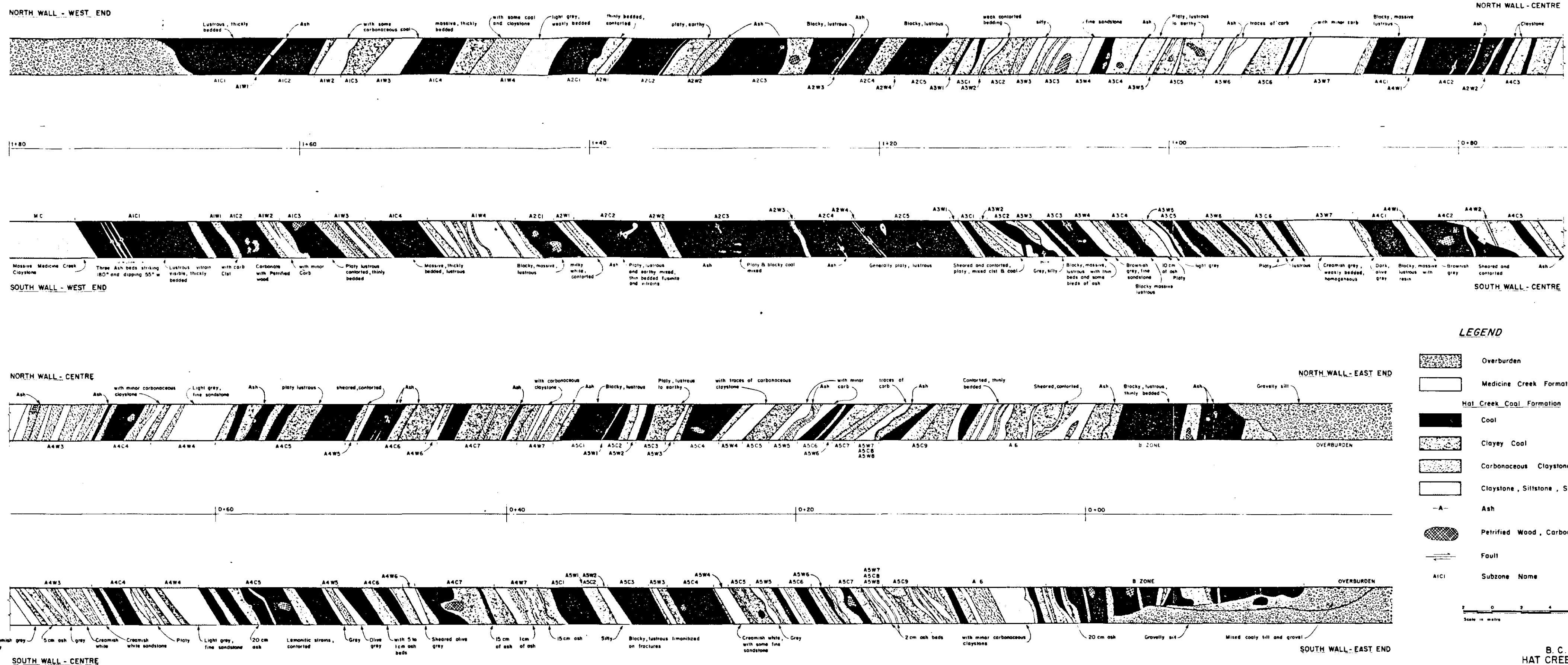
Scale in metre  
Date: Dec 1982

B. C. HYDRO  
HAT CREEK PROJECT  
MINING FIELD PROGRAM 1982

FIGURE 6  
TRENCH D  
GEOLOGICAL PLAN

3  
809

HAT CREEK NTS 921/12?



B. C. HYDRO  
HAT CREEK PROJECT  
MINING FIELD PROGRAM 1982  
FIGURE 7.  
TRENCH D - WALL GEOLOGY

4  
809