

#889

Fording River Operations

Summary Report

2005 Exploration Program

Table of Contents

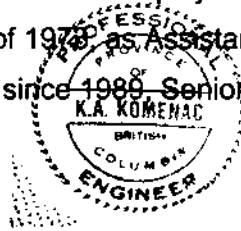
I. INTRODUCTION.....	1
1. GENERAL GEOGRAPHY AND HISTORY.....	1
2. GEOLOGY.....	2
i) Stratigraphy.....	2
ii) Structure.....	4
3. SUMMARY OF WORK DONE IN 2005.....	6
II INDIVIDUAL AREA PROGRAMS.....	8
1. SOUTHEAST TURNBULL MOUNTAIN.....	8
i) Objective.....	8
ii) Summary of Work Done.....	8
iii) Results and Conclusions.....	8
2. CASTLE MOUNTAIN.....	9
i) Objective.....	9
ii) Summary of Work Done.....	9
iii) Results and Conclusions.....	9
3. BARE MOUNTAIN.....	10
i) Objective.....	10
ii) Summary of Work Done.....	10
iii) Results and Conclusions.....	10

List of Illustrations

<u>Illustration No.</u>	<u>Description</u>
1.	a. Index Map - Coal Properties Scale: 1:50,000 b. General Geology Map Scale: 1:25,000
2.	2005 Southeast Turnbull Mountain Exploration Program Scale: 1:10,000
3.	2005 Completed Exploration Chauncey/Bare Mountain Scale: 1:10,000

Statements of Author's Academic and Professional Qualifications

The author of this report, K.A. Komenac, in 1973 received the degree of Bachelor of Science (Geology Major) from the University of British Columbia, and is registered as a Professional Engineer with the Association of Professional Engineers and Geoscientists of the Province of British Columbia. The author has been an employee of Fording Coal Limited at the Fording River Operation since November of 1978, as Assistance Pit Geologist, Exploration Geologist, Senior Exploration Geologist, and since 1989, Senior Geologist.



SCHEDULE C

**PROVINCE OF
BRITISH COLUMBIA**

**MINISTRY OF
ENERGY, MINES AND
PETROLEUM RESOURCES**

**TITLE PAGE OF
ASSESSMENT REPORT**

GENERAL NATURE OF WORK

TOTAL COST

Exploration \$912,300.00

Author of Landsman _____ Signature (s) 

K.A. Komenac (P. Eng.)

Date report filed March 16 / 06 Year of work 2005

Property Name Fording River Operations

Coal type (if applicable) Medium to High Volatile Bituminous

Mining Division Fort Steele Longitude 114° 52'

Latitude 50° 12'

Coal Licence Numbers; Coal Leases; Freehold BC Coal Lease #17, Lot #4588

Coal Licences # 327992, 39799, 328674

Owner (s) _____

(1) Elk Valley Coal Corporation

PO Box 100, Elkford, BC V0B 1H0

Operator (s)

(a)

Same

References to Previous Work

Annual Assessment Reports Since 1970

Fording River Operations

Summary Report

2005 Exploration Program

I. Introduction

1. **General Geography and History**

The Fording River Coal property is located in the Fording River and Upper Elk Valleys, approximately 25 kilometres north of Elkford, BC. Access is by paved road north from Elkford along the Fording River Valley, or north along the Elk River Valley via the Forestry Service gravel road or the Kan-Elk Powerline road.

The Fording River minesite is situated within the front range of the southern Canadian Rocky Mountains. At least ten major coal seams, generally greater than four metres thick, are contained in the Mist Mountain Formation of the Kootenay Group.

The Elk River portion of the property was actively explored by the Canadian Pacific Railway Company in the period 1902 - 1908. Until 1947, the property was comprised of 10,276 hectares in 40 Crown Granted Lots. In that year, the holdings were reduced to 2,979 hectares in 15 Crown Granted Lots. In 1967 and 1968, Canadian Pacific Oil and Gas reacquired part of the coal lands which had been abandoned in 1947. An additional nine Coal Licences located at the south end of the property were acquired in 2001. At the present time, the Fording River Property consists of 22,635 hectares, held on seven Coal Leases, 9 Coal Licences, and 15 Crown Granted Lots.

Mining operations which commenced in 1971, have produced more than 182.0 million tonnes of clean metallurgical and thermal coal for markets in North and South America, Africa, Europe and Asia. Of this total, 9.3 million tonnes were produced in 2005.

Reference:

- i) Illustration No. 1A: Index Map - Coal Properties

2. **Geology**

i) **Stratigraphy**

The general stratigraphic succession on the Fording River Property is summarized in the following table:

Period	Litho-Stratigraphic Units		Principal Rock Types
Recent			Colluvium
Quaternary			Clay, silt, sand, gravel, cobbles
Lower Cretaceous	Blairmore Group		Massive bedded sandstones and conglomerates
Lower Cretaceous to Upper Jurassic	K O O T E N A Y G R O U P	Elk Formation	Sandstone, siltstone, shale, mudstone, chert pebble conglomerate, minor coal
		Mist Mountain Formation	Sandstone, siltstone, shale, mudstone, thick coal seams
		Moose Mountain Member	Medium to coarse grained quartz-chart sandstone
		Weary Ridge Member	Fine to coarse grained, slight ferruginous quartz-chart sandstone
Jurassic	Fernie Formation		Shale, siltstone, fine-grained sandstone
Triassic	Spray River Formation		Sandy shale, shale quartzite
	Rocky Mountain Formation		Quartzite
Mississippian	Rundle Group		Limestone

The oldest rocks present on the Fording River property are the Rundle Group limestones, located on the west bank of the Fording River, near the southern property boundary. They are in faulted contact with the Kootenay Group to the west, and unconformable contact with Rocky Mountain Formation quartzites to the north. The latter are best exposed on the eastern slope of the Brownie Creek Valley.

The Fernie Formation shales occur throughout the area, generally along the sides of the valleys on the lower flanks of the mountains. The shales are recessive and, therefore, poorly exposed. The Fernie Formation is in conformable contact with the Morrissey, through the "Passage Beds," which are a transitional zone from marine to non-marine sedimentation.

The Morrissey Formation, which is the "basal sandstone" of the Kootenay Group, is a prominent cliff-forming marker horizon in many locations. On the Fording River Property, the top of the Moose Mountain member (Morrissey Formation) is in sharp contact with #1 or A seam, the lowermost bed of the Mist Mountain Formation.

The Mist Mountain Formation contains all of the economic coal seams, and is the most widely occurring formation on Fording River Property. This economically important formation is an interbedded sequence of sandstones, siltstones, silty shales, mudstones, and medium to high volatile bituminous coal seams. The volatile content of the coal increases up section, with decreasing rank. Lenticular sandstones comprise about 1/3 of the Mist Mountain sediments at Fording River, but very few laterally extensive sandstone beds exist.

The sandstone above and below seam #4 (B) and above #9 (F), are the most persistent units, and are often cliff-forming marker horizons.

The Mist Mountain Formation is generally overlain conformably by strata of the Elk Formation. On the Fording property, this formation is commonly a succession of sandstones, siltstones, shales, mudstones, chert pebble conglomerates and sporadic, thin, high volatile bituminous coal seams. The coal seams are characterized by a high alginate content and referred to as "Needle" coal. The Elk Formation is observed near the tops of the mountains, mainly on the east side of the Elk Valley on the Greenhills Range, and northward to the Mount Tuxford areas.

The top of the Elk Formation marks the upper boundary of the Kootenay Group, which is unconformably overlain by the basal member of the Blairmore Group. This thick bedded, cliff-forming sandstone and conglomerate unit is observed on the upper slopes of Mount Tuxford.

ii) **Structure**

Subsequent to deposition, the sediments were involved in the mountain building movements of the late Cretaceous to early Tertiary Laramide orogeny. The major structural features of the Fording River property are the north-south trending synclines with near horizontal to steep westerly dipping thrust faults, and a few high angle normal faults. Some of the thrust faults probably were folded late in the tectonic cycle.

The formation of the major fold structures began early in the tectonic cycle. In the current mining area, two asymmetric synclines are evident; the Greenhills Syncline to the west, and the Alexander Creek Synclines to the east of the Fording River.

The thrust faulting (ie: the Ewin Pass and Brownie Ridge Thrusts), was probably contemporaneous with the later stages of folding. The intervening anticline was subsequently faulted (Ericson Fault), then eroded.

The Alexander Creek Syncline can be traced from the southern property boundary on Castle Mountain to the northern end of the property on Weary Ridge. The strata of the west limb, on the west face of Eagle Mountain, dips easterly at 20 to 25^o, decreasing gradually to zero as the axis is approached. The east limb, however, attains a 20^o westerly dip within a much shorter (500m) distance of the axis. This asymmetry is possible due, at least in part, to the influence of the Ewin Pass Thrust which subcrops 600 to 800 metres east of the synclinal axis.

Further to the east, on Brownie Ridge, the strata dips westerly at a mean dip of 42° . The Brownie Ridge Thrust, which subcrops near the crest of the ridge, probably contributes to this steepening.

Within the mining area, the axis of the Alexander Creek Syncline plunges to the north at an average of 4° . Turnbull Mountain exhibits a localized series of an echelon fold structures, plunging both to the north and south. These subsidiary folds may be related to thrust faulting. From the south end of Mount Tuxford, the synclinal axis continues north-northwest along the base of Mount Veits and into the Elk River Valley near Aldridge Creek.

On Mount Tuxford, the beds exposed are those of the Elk Formation and the overlying (non-coal bearing) Cadomin Formation. The area has not been extensively explored. The stratigraphic sequence of the east limb, in the more extensively explored Mist Mountain strata near Aldridge Creek (Elco property), closely resembles the east limb strata found on Henretta Ridge, ten kilometres to the south.

On the northwest corner of Eagle Mountain, the lower Kootenay-upper Fernie section is the locus for a zone of near horizontal thrust faulting. The effect is to cause a double repetition of the lower coal seams and basal sandstone on the west synclinal limb. This fault zone is synclinal in form, and continuous with the Ewin Pass Thrust zone found the east limb.

The Greenhills Syncline in the mining area, is essentially a "mirror-image" of the Alexander Creek structure. The east limb of the asymmetric syncline dips westerly at 15 to 25° , except in areas near the Ericson Fault, where 45 to 55° dips are common. The west limb exhibits much steeper dips; commonly in the 35 to 45° range. The Greenhills Syncline plunges northward (340 to 350°), at less than 5° , then apparently dies out to the north in the area of the Osborne Creek Depression.

The Ericson Fault, which locally runs along the base of the Greenhills Range west of the Fording River, is one of the major regional faults. From south to north, this westerly dipping (40 to 70°) normal fault, brings Mist Mountain strata progressively into contact with Rundle, Rock Mountain, Spray River, Fernie and Morrissey strata. The downthrown block is to the west.

Near the south end of Lake Mountain, the Ericson Fault beings to “splay” into two zones. The main fault runs along the eastern margin of Lake Mountain, and the subsidiary fault runs to the west, and appears to “die out” northward. The steep northward dip exhibited in the Lake Mountain strata could be due to influence from these flanking “splays” of the fault. The flat lying region to the north of Lake Mountain (Osborne Creek Depression area) is completely void of outcrop, and the Ericson Fault has not been traced either through or to the north of this area.

Reference:

- i) Illustration No. 1b: General Geology Map

3. **Summary of Work Done in 2005**

20 reverse circulation drill holes were completed for a total of 7,131 metres. Geological field mapping was conducted by staff geologists on Bare Mountain.

Rotary drilling was done by SDS Drilling using an Ingersol Rand TH100 truck mounted rig and a Jaswell 2400 truck mounted rig.

All holes were geophysically logged through the rods using the gamma-neutron method. Holes that remained open after the rods were pulled were logged for hole deviation, and selected holes were logged for gamma-density. Logging was done by Century Geophysical Corporation.

Coal seams encountered by rotary drilling were samples in 0.5m intervals. Representative composite samples for each coal seam encountered in the hole were prepared at Fording's Process Plant Laboratory. Each seam composite was tested for proximate analysis, % Sulphur and Free Swelling Index. Samples from selected seam composites were sent to David E. Pearson and associates for petrographic analysis.

Fording staff laid out the access roads and drillsite locations. Pre-logging was done by Diesel Logging. Road and drillsite construction was done by Tiegen Contractors Inc. Staff surveyors provided the required survey control and drillhole pickups.

The following table shows the drillhole locations with respect to Coal Lease and Licence boundaries:

<u>Lease / Licence</u>	<u>Drillholes</u>
BC Coal Lease #17	RH # 2824 - 2831 inclusive
Coal Licence #327992	RH # 2797 - 2802 inclusive
Coal Licence #327993	RH # 2803, 2804, 2846 and 2847
Coal Licence #328674	RH # 2848
Lot 4588	RH # 2796

II Individual Area Programs

1. Southeast Turnbull Mountain

i) Objective

Results from an economic analysis of the northeast Eagle/southeast Turnbull region indicated a good potential for additional reserves exists on the southeast flank of Turnbull Mountain. These reserves would extend the current Eagle Mountain reserves an additional 800 metres northward onto Turnbull Mountain.

The objective of the southeast Turnbull drilling program was to provide the fill in geological and coal quality data required to confirm the geological interpretation and economic analysis. The additional drillholes would also bring the drillhole density to within the requirements for reserves designation.

ii) Summary of Work Done

Eight reverse circulation rotary holes were completed for a total of 2,275 metres. All holes were geophysically logged through the drill rods using the gamma-neutron method. All holes were also logged open hole for gamma density and hole deviation, with the exception of RH #2829m which has caved at 95 metres.

iii) Results and Conclusions

The 2005 drilling program on Turnbull Mountain intersected seams from 040 up to the 14 seam series. Most of the seams were slightly thicker than anticipated, particularly seams 130, 120 and 100, the most economically important seams in the area. Re-evaluation of this area, with inclusion of the new drillhole information, is expected to confirm the previous economic evaluation, and should lead to reserves additions.

Reference:

- i) Illustration 2: Southeast Turnbull Exploration Program

2. Castle Mountain

i) Objective

The objective of the 2005 drilling program was to determine the reserves potential of the recently acquired southwest corner of Castle Mountain.

ii) Summary of Work Done

Seven reverse circulation rotary holes were completed for a total of 2,656 metres. All holes were geophysically logged through the drill rods using the gamma-neutron method and open hole, using the gamma density and hole deviation methods.

iii) Results and Conclusions

The 2005 drillholes intersected seams from the entire Mist Mountain Formation, as well as several hundred metres of Elk Formation (RH #2801) and a repeated Moose Mountain sandstone (RH #8796). Seam thicknesses and strip ratios are similar to those encountered further to the north.

Sufficient information is now available to allow a preliminary assessment of the reserves potential over the entire length of the west flank of Castle Mountain.

Reference:

- ii) Illustration 3: 2005 Completed Exploration Chauncey/Bare Mountain

3. **Bare Mountain**

i) **Objective**

Bare Mountain was extensively trenched and field mapped by Crowsnest Resources in the early 1980's. Two deep diamond drillholes were also completed at that time, both on the north facing flank. In 2001 and 2002, four reverse circulation rotary holes were completed by Fording River Operations, all on the north flank of Bare Mountain.

The objective of the 2005 drilling program was to determine if the encouraging seam thicknesses and stripping ratios encountered in the holes on the north facing slope continue southward onto the west facing flank of Bare Mountain.

ii) **Summary of Work Done**

Five reverse circulation rotary drillholes were completed for a total of 2,200 metres. All holes were geophysically logged through the drill rods using the gamma-neutron method. All holes were also logged open hole using the gamma density and hole deviation methods.

iii) **Results and Conclusions**

Results from the 2005 drillholes correlate well with the previous holes drilled on the north facing slope, particularly with the two diamond drillholes completed by Crowsnest Resources in 1981. Seams 11, 7 and 5 are very thick throughout the area, generally exceeding 10m in vertical thickness. True thickness is somewhat less, due to the steep bedding dips that prevail on Bare Mountain (60° or steeper). These thick seams are often repeated throughout the section, by the many thrust faults that affect the area. Strip ratios remain encouraging, in spite of the steep bedding and extensive thrust faulting. Extensive fill in drilling proposed for 2006 will allow completion of an economic evaluation for Bare Mountain.

Reference:

- i) Illustration 3: 2005 Completed Exploration Chauncey/Bare Mountain



ELK VALLEY COAL CORPORATION
FORDING RIVER OPERATIONS

P.O. Box 100
Elkford, BC V0B 1H0

Telephone (250) 865-5167

Facsimile (250) 865-5165

Email:

Website: www.elkvalleycoal.ca

March 15, 2006

Mineral Titles
Ministry of Energy, Mines & Petroleum Resources
6th Floor, 1810 Blanshard Street
PO Box 9326 Stn Prov Govt
Victoria, BC
V8W 9N3

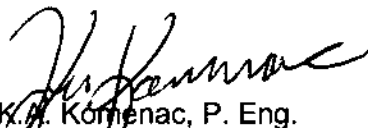
ATTN: Mrs. Kim Stone, Coal Administrator

Dear Mrs. Stone:

Please find enclosed one copy of the report entitled "Summary Report - 2005 Exploration Program."

I trust that this submission will fulfil the requirements under the Coal Act and Coal Act Regulations.

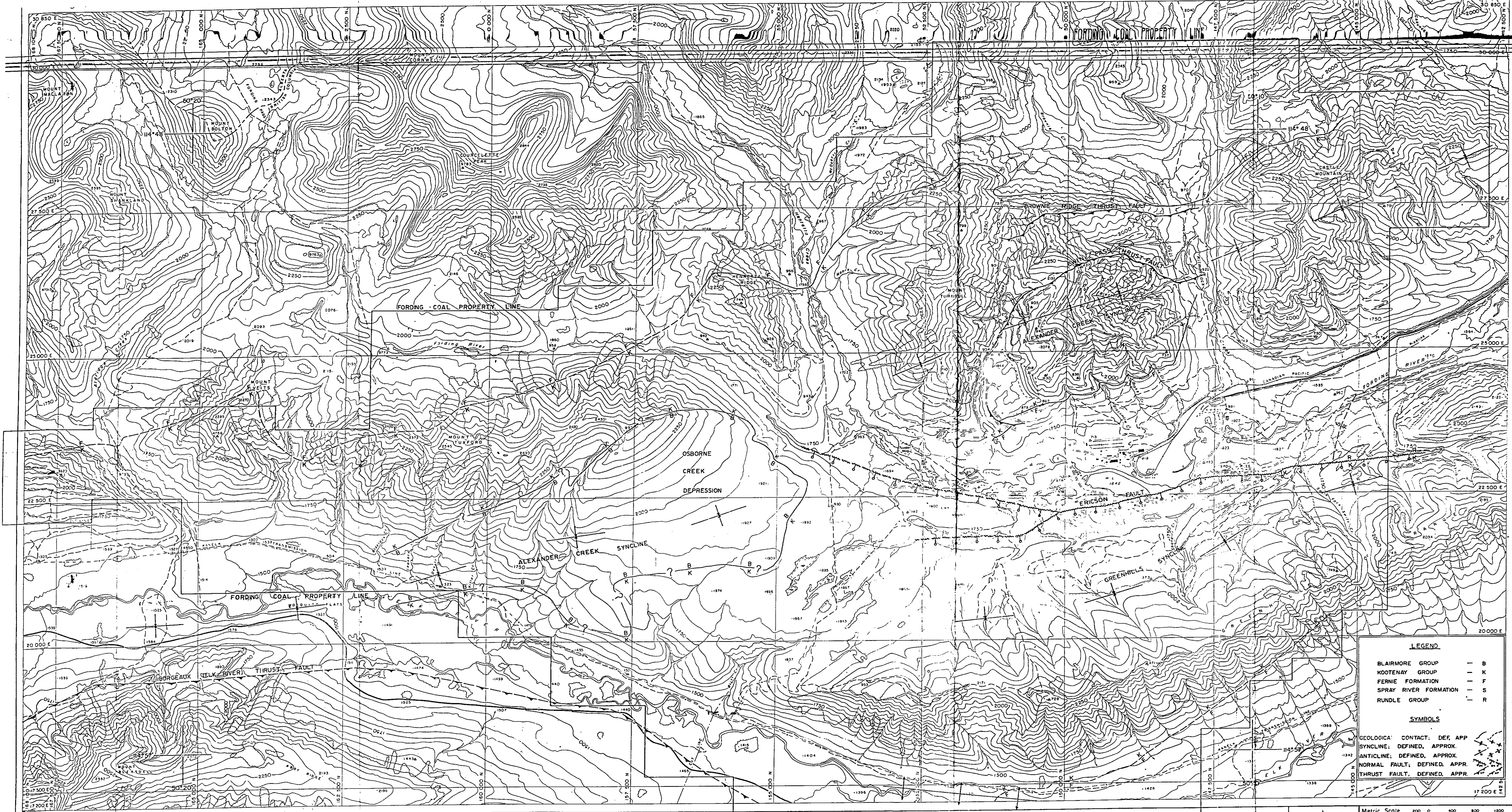
Yours truly,


K.A. Kormenac, P. Eng.
Senior Geologist

KAK:jjn

Enclosure

TITLES DIVISION, MINERAL TITLES VICTORIA, BC
APR 11 2006
FILE NO. _____
LOG IN NO. _____



LEGEND

BLAIRMORE GROUP — B
 KOOTENAY GROUP — K
 FERNIE FORMATION — F
 SPRAY RIVER FORMATION — S
 RUNDLE GROUP — R

SYMBOLS

GEOLOGICAL CONTACT: DEFINED, APPROX.
 SYNCLINE: DEFINED, APPROX.
 ANTICLINE: DEFINED, APPROX.
 NORMAL FAULT: DEFINED, APPROX.
 THRUST FAULT: DEFINED, APPROX.

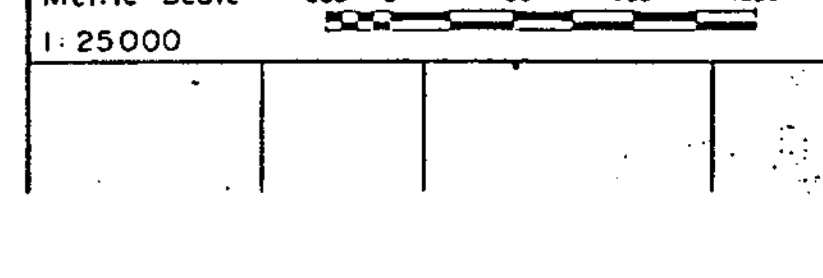
Job No. 06333-7 Date Plotted August 1977
 McELHANNY SURVEYING & ENGINEERING LTD.

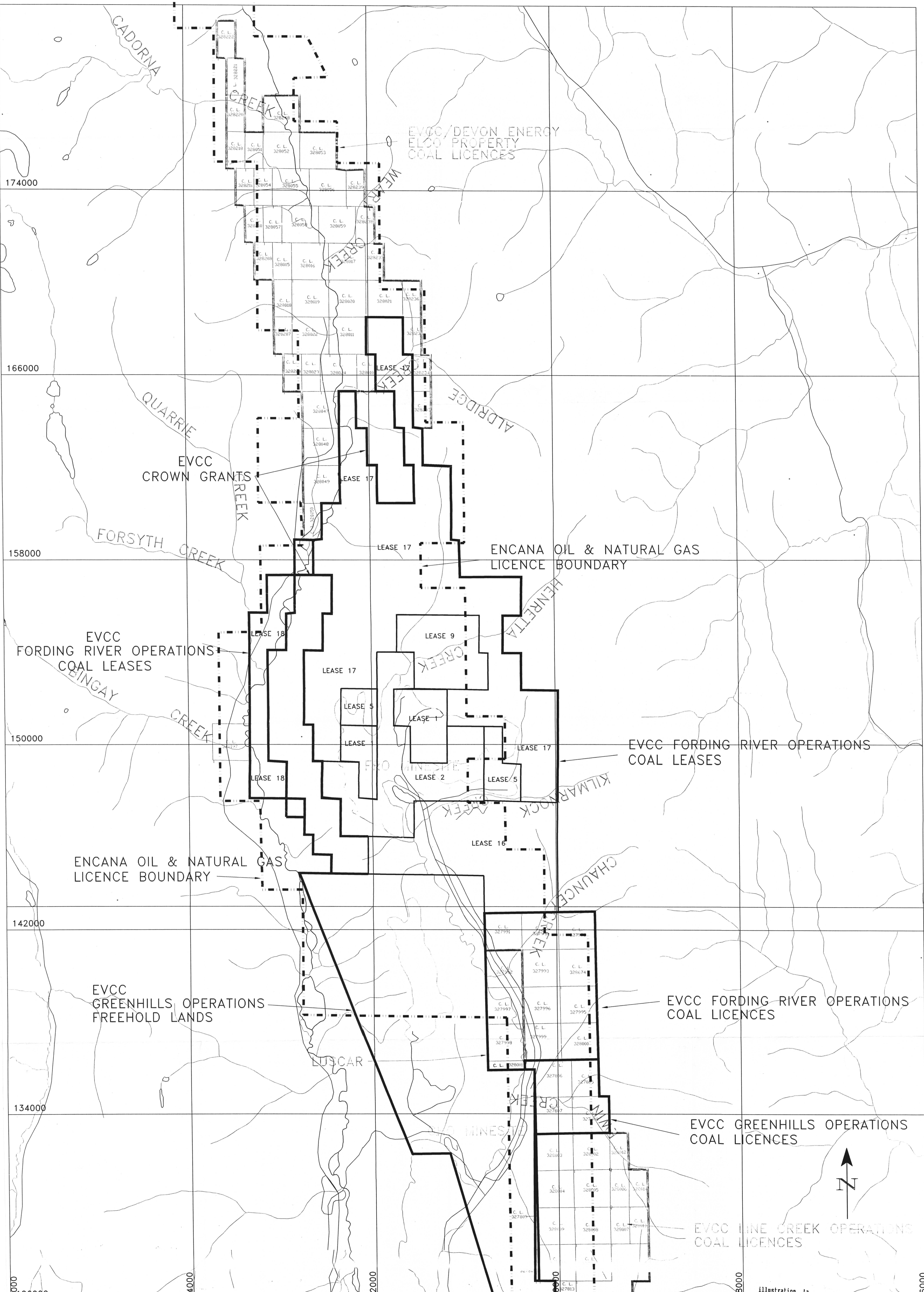
Function	Activity	Section	Job

Revisions	No.	Made by	Date	Description

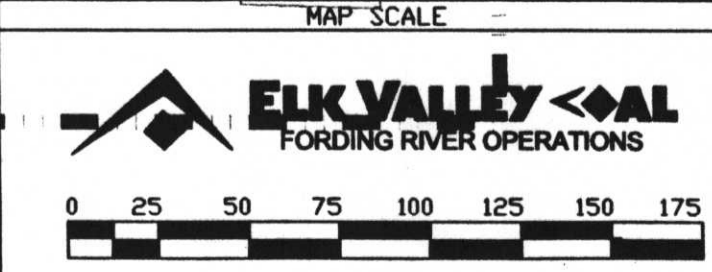
Drawn by J.S. JUNE 1983
 Checked by
 Design Eng.
 Proj. Eng. Approved

GEOLOGY MAP — ILLUSTRATION 1b





LEGEND



APPROVAL	DATE	MADE BY	DESCRIPTION

E.V.C.C. UPPER ELK VALLEY COAL TENURE		
MAP INDEX NUMBER	SCALE	DRAWING NUMBER
	1:50000	



illustration 1a

174000

166000

158000

150000

142000

134000

126000

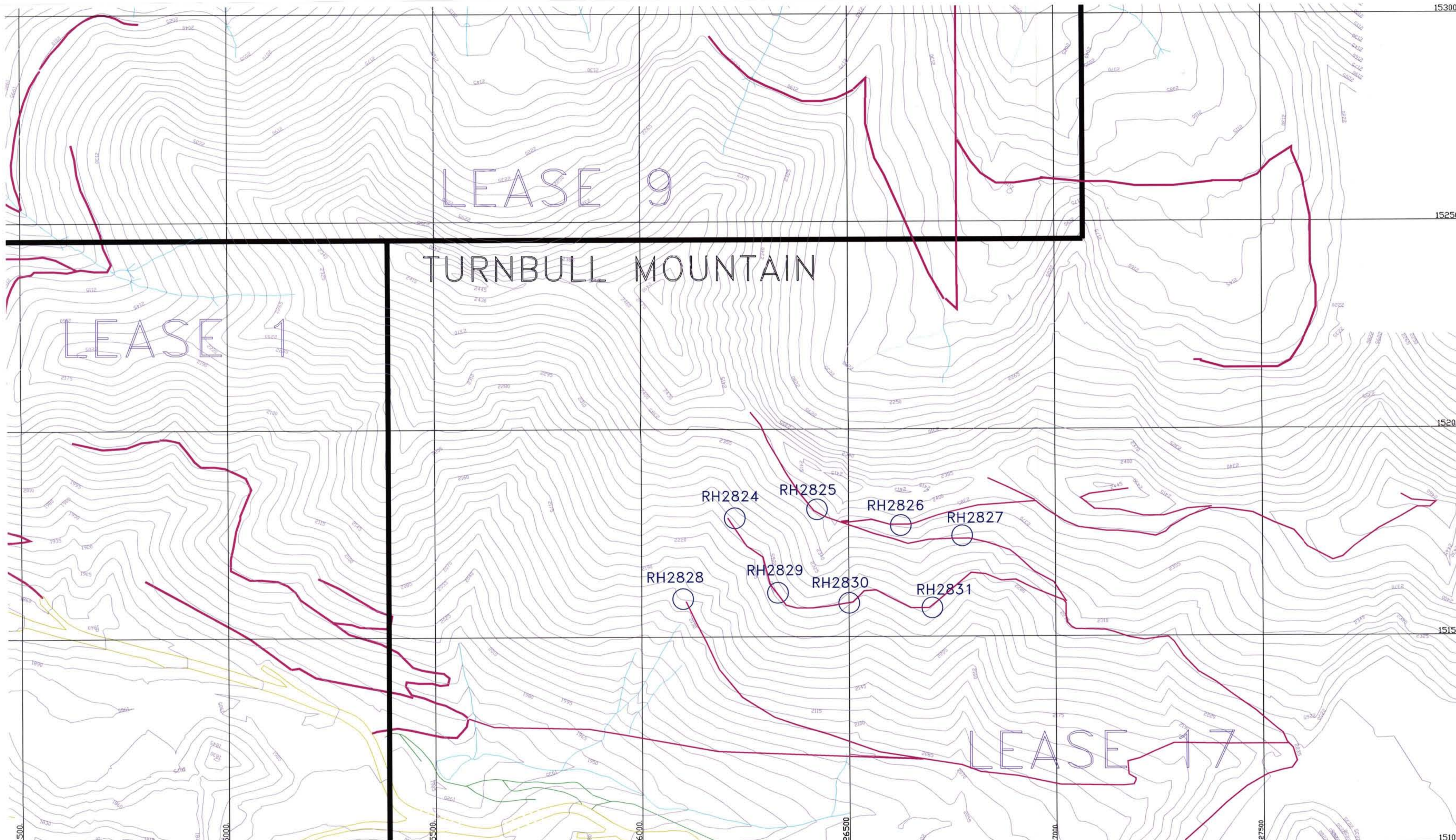
14000

22000

20000

18000

46000



LEASE 9

LEASE 1

TURNBULL MOUNTAIN

LEASE 17

RH2824
RH2825
RH2826
RH2827
RH2828
RH2829
RH2830
RH2831

LEGEND

2005 COMPLETED ROTARY DRILLSITE ○

EXISTING EXPLORATION ACCESS ———

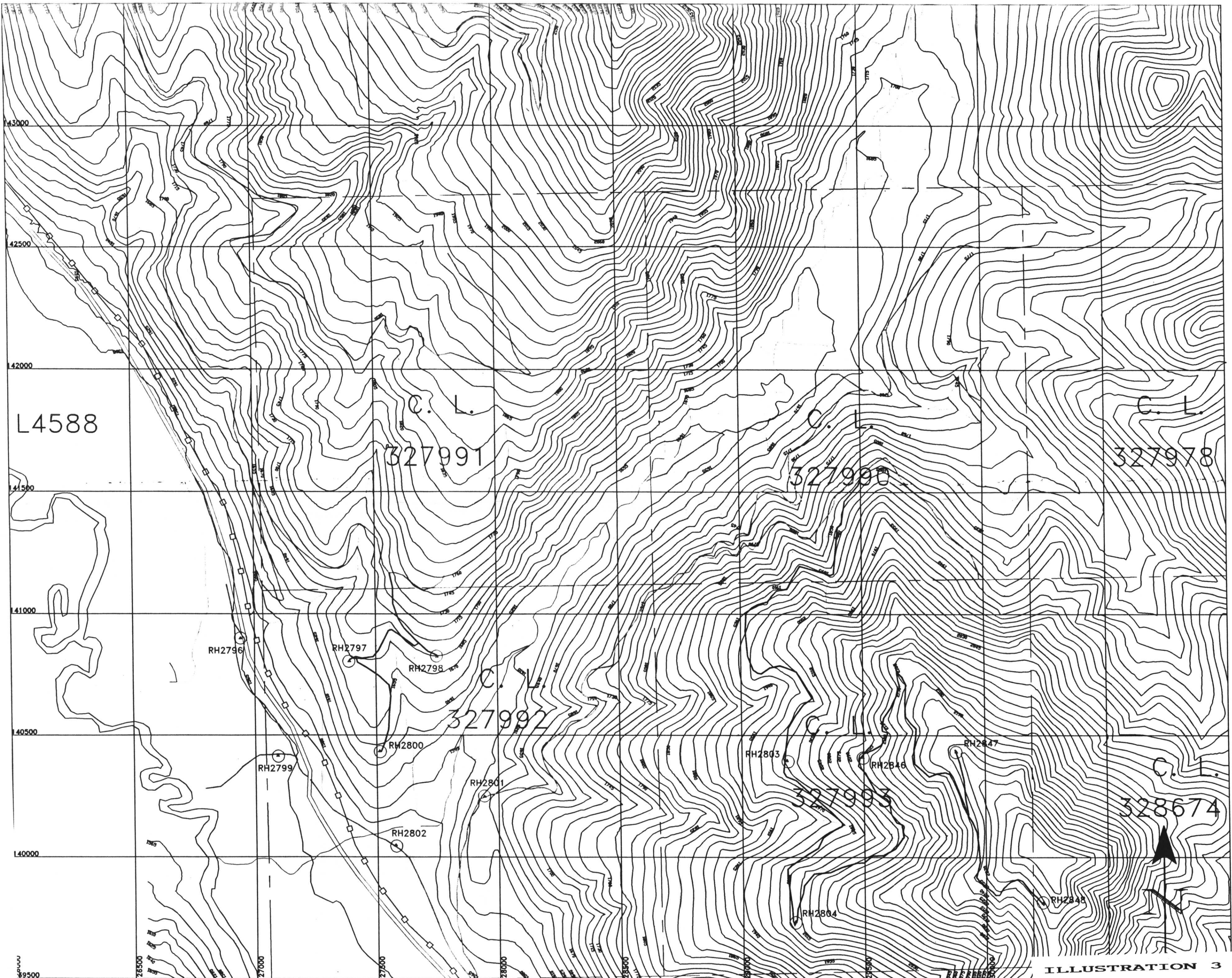
No	DATE	MADE BY	DESCRIPTION
1			
2			
3			
4			
5			

DATE	DRAWN BY	CHECKED	APPROVED
APR 5, 2006	BOB		

ILLUSTRATION NO. 2

2005 COMPLETED EXPLORATION PROGRAM
SOUTH TURNBULL MOUNTAIN

MAP INDEX NUMBER	SCALE	DRAWING NUMBER
	1: 5,000	EXP-9-80



L4588

327991

327990

327978

RH2796

RH2797

RH2798

327992

RH2800

RH2803

RH2806

RH2807

RH2799

RH2801

327993

328674

RH2802

RH2804

RH2808

LEGEND

- EXISTING ACCESS
- 2005 ACCESS
- ⊙ 2005 DRILL HOLES



DATE	MADE BY	DESCRIPTION

2005 COMPLETED EXPLORATION
CHAUNCEY/BARE MOUNTAIN

DATE	REVIEW BY	CHECKED	APPROVED	HPW BLOCK NUMBER	SCALE	DRAWING NUMBER
Nov 20, 2005	GES				1:10000	EXP-9-78

GEOL	2847	29881.457	140433.094	2246.765			
GEOL	BM1	28829.738	141217.750	1781.300			
GEOL	bm2	29130.178	141082.922	1914.856			
GEOL	2846	29496.268	140410.250	2110.844			
GEOL	2848	30232.230	139811.656	2295.503			
GEOL	2828	26103.896	151594.734	2147.493			
GEOL	2797	27391.680	140804.375	1667.335			
GEOL	2800	27511.891	140433.750	1633.564			
GEOL	2798	27752.309	140822.375	1674.391			
GEOL	2801	27941.463	140248.281	1631.517			
GEOL	2803	29184.863	140396.781	1999.160			
GEOL	2804	29213.861	139736.547	2003.192			
GEOL	rh2802	27573.719	140047.281	1570.640			
GEOL	12 167	24539.562	154994.984	1895.204			
GEOL	2843	24506.984	154910.953	1894.394			
GEOL	2827	26793.766	151731.125	2325.587	0.031	0.031	0.200
GEOL	2825	26429.768	151804.439	2361.983	0.028	0.037	0.450
GEOL	2826	26631.889	151757.725	2362.910	0.034	0.030	0.180
GEOL	2831	26699.950	151577.805	2266.016	0.031	0.043	0.220
GEOL	2830	26506.221	151587.735	2250.095	0.031	0.045	0.200
GEOL	2829	26328.039	151598.731	2251.230	0.031	0.040	0.250
GEOL	2824	26232.052	151777.135	2266.472	0.028	0.031	0.250
GEOL	11 238	24619.658	155050.828	1894.619			
GEOL	11 239	24688.121	155277.922	1895.430			
GEOL	11 240	24748.002	155318.062	1895.097			
GEOL	11 241	24730.436	155166.969	1894.696			
GEOL	11 242	24795.871	155070.078	1895.207			
GEOL	11 243	24771.080	154929.094	1895.110			
GEOL	11 244	24965.461	155054.625	1895.573			
GEOL	14 198	26401.387	149866.828	2134.760			
GEOL	2839	25600.023	150199.969	1988.131			
GEOL	2834	25990.481	151068.591	1966.208	0.026	0.032	1.700
GEOL	2799	27090.837	140415.082	1555.063	0.046	0.079	1.700
GEOL	2796	26942.077	140899.105	1565.192	0.039	0.054	1.700
GEOL	2840	26021.375	150375.344	2102.987			
GEOL	2836	25659.076	150704.547	2057.362			
GEOL	2835	26362.078	151005.203	2018.413			
GEOL	2832	25451.463	151039.500	1932.706			
GEOL	2833	25691.172	151129.375	1934.723			
GEOL	2837	25465.061	150500.031	1958.139	0.039	0.076	1.700
GEOL	4-104	27436.078	149834.766	2135.471			
GEOL	7-177	25061.891	150340.531	1957.679			
GEOL	9-189	25143.557	150743.531	1953.044			
GEOL	9-190	25156.604	150595.234	1953.755			
GEOL	4-104	27436.156	149834.625	2135.476			
GEOL	8-81	25298.990	150245.078	1969.738			
GEOL	4-103	27377.941	150026.438	2135.339			
GEOL	4-100	27024.982	150231.000	2121.302			
GEOL	4-101	27135.576	149917.359	2122.007			
GEOL	12-162	25895.988	150226.031	2120.179			
GEOL	12-163	25961.984	150157.062	2120.205			
GEOL	12-164	25823.053	150055.984	2135.368			
GEOL	12-166	25913.957	149756.984	2123.191			
GEOL	2845	26426.006	149500.078	2132.387			
GEOL	5-174	24908.443	150057.281	1956.114			
GEOL	9-189	25143.486	150743.328	1953.194			
GEOL	7-188	27032.967	150787.516	2134.854			
GEOL	4-97	26913.104	150705.000	2135.355			
GEOL	4-96	24721.529	149870.594	1940.957			
GEOL	5-176	25044.941	149717.562	1955.297			
GEOL	4-96	24725.211	149867.906	1940.693			
GEOL	5-177	25228.941	149747.000	1955.873			
GEOL	5-177	25260.002	149631.281	1955.312			
GEOL	5-178	25259.998	149631.281	1955.313			
GEOL	8-80	25121.834	150490.891	1956.164			
GEOL	2844	24572.893	154830.344	1910.765			
GEOL	2841	24598.184	155228.953	1895.001			
GEOL	5-175	24948.955	150239.031	1955.982			
GEOL	5-175	24948.955	150239.031	1955.982			
GEOL	9-189	25143.477	150743.500	1953.130			

ROTARY DRILL HOLE SAMPLING RECORD										ELKVALLEY COAL CORP.		
HOLE NUMBER:		2846	AREA:		BARE	FORDING RIVER OPERATIONS						
FROM	TO	DESCRIPTION	SAMPLE NUMBER	WIDTH	ASH	V.C.M.	I.M.	F.C.	F.S.I.	S	PHOS	REMARKS
35.5	36		185126	0.5	70.3							
36	36.5		185127	0.5	65.8							
36.5	37		185128	0.5	47.8							
37	37.5		185129	0.5	38.4							
37.5	38		185130	0.5	69.7							
38	38.5		185131	0.5	70.2							
57	57.5		185132	0.5	73.4							
58	58.5		185133	0.5	26.6							
59	59.5		185134	0.5	18.4							
59.5	60		185135	0.5	16.4							
59	59.5		185137	0.5	8.6							
59.5	60		185138	0.5	10.8							
60	60.5		185139	0.5	7.6							
60.5	61		185140	0.5	6.6							
61	61.5		185141	0.5	7.7							
61.5	62	386	185142	0.5	16.0							Ro. Max
62	62.5		185143	0.5	13.0							Ro-05-077
62.5	63		185144	0.5	22.4							
63	63.5		185145	0.5	31.3							
63.5	64		185146	0.5	15.1							
64	64.5		185147	0.5	8.1							
64.5	65		185148	0.5	6							
65	65.5		185149	0.5	20.3							
65.5	66		185150	0.5	24.9							
66	66.5		185151	0.5	9.4							
66.5	67		185152	0.5	29.8							
67	67.5		185153	0.5	71.9							

ROTARY DRILL HOLE SAMPLING RECORD										ELKVALLEY COAL CORP.		
HOLE NUMBER:		2846		AREA:		BARE				FORDING RIVER OPERATIONS		
FROM	TO	DESCRIPTION	SAMPLE NUMBER	WIDTH	ASH	V.C.M.	I.M.	F.C.	F.S.I.	S	PHOS	REMARKS
		Compo 386			14.6	25.39	0.49		7.5	0.48		
75	75.5		185154	0.5	29.1							
75.5	76		185155	0.5	51.9							
76	76.5		185156	0.5	69.3							
76.5	77		185157	0.5	67.9							
145	145.5		185158	0.5	26.2							
145.5	146		185159	0.5	44.6							
146	146.5		185160	0.5	45.8							
146.5	147	387	185161	0.5	29.8							Ro. Max
147	147.5		185162	0.5	31.9							Ro-05-078
147.5	148		185163	0.5	26.1							
148	148.5		185164	0.5	22.9							
148.5	149		185165	0.5	24.3							
149	149.5		185166	0.5	19.5							
149.5	150		185167	0.5	15.3							
150	150.5		185168	0.5	32.5							
150.5	151		185169	0.5	47.1							
151	151.5		185170	0.5	43.1							
151.5	152		185171	0.5	63.3							
		Compo 387			32.3	19.19	0.39		1.5	0.38		
156	156.5		185172	0.5	22.5							
156.5	157	388	185173	0.5	28.8							
157	157.5		185174	0.5	55.1							
157.5	158		185175	0.5	64.8							
		Compo 388			27.1	21.68	0.33		1	0.52		
226	226.5		185176	0.5	53.4							
226.5	227		185177	0.5	46.5							
227	227.5		185178	0.5	30.7							
227.5	228	389	185179	0.5	19.9							
228	228.5		185180	0.5	24.9							

ROTARY DRILL HOLE SAMPLING RECORD										ELKVALLEY COAL CORP.		
HOLE NUMBER:		2846		AREA:		BARE				FORDING RIVER OPERATIONS		
FROM	TO	DESCRIPTION	SAMPLE NUMBER	WIDTH	ASH	V.C.M.	I.M.	F.C.	F.S.I.	S	PHOS	REMARKS
228.5	229	389	185181	0.5	30.6							
229	229.5		185182	0.5	26.7							
229.5	230		185183	0.5	10.1							
230	230.5		185184	0.5	19.6							
230.5	231		185185	0.5	32.6							
231	231.5		185186	0.5	17.6							
231.5	232		185187	0.5	28.1							
232	232.5		185188	0.5	49.1							Ro. Max
232.5	233		185189	0.5	41.1							Ro-05-079
233	233.5		185190	0.5	19.4							
233.5	234		185191	0.5	20.9							
234	234.5		185192	0.5	10.6							
234.5	235		185193	0.5	18.1							
235	235.5		185194	0.5	22.9							
235.5	236		185195	0.5	18.8							
236	236.5		185196	0.5	11.4							
236.5	237		185197	0.5	28.3							
237	237.5		185198	0.5	23.2							
237.5	238		185199	0.5	25.1							
238	238.5		185200	0.5	25.3							
238.5	239		185201	0.5	19.7							
239	239.5		185202	0.5	15.4							
239.5	240		185203	0.5	11.3							
240	240.5		185204	0.5	10.3							
240.5	241		185205	0.5	21.8							
241	241.5		185206	0.5	34.3							
241.5	242		185207	0.5	61.6							
242	242.5		185208	0.5	43.6							
242.5	243		185209	0.5	50.4							
243	243.5		185210	0.5	58.4							
243.5	244		185211	0.5	74.7							

ROTARY DRILL HOLE SAMPLING RECORD

ELKVALLEY COAL CORP.

HOLE NUMBER:		2846		AREA:	BARE		FORDING RIVER OPERATIONS					
FROM	TO	DESCRIPTION	SAMPLE NUMBER	WIDTH	ASH	V.C.M.	I.M.	F.C.	F.S.I.	S	PHOS	REMARKS
		Compo 389			23.2	19.37	0.34		1.5	0.35		

ROTARY DRILL HOLE SAMPLING RECORD										ELKVALLEY COAL CORP.			
HOLE NUMBER:		2847	AREA:		BARE						FORDING RIVER OPERATIONS		
FROM	TO	DESCRIPTION	SAMPLE NUMBER	WIDTH	ASH	V.C.M.	I.M.	F.C.	F.S.I.	S	PHOS	REMARKS	
94.5	95		185002		20.6								
95	95.5		185003		20.3								
95.5	96	390	185004		17.1							Ro. Max	
96	96.5		185005		16.1							Ro-05-080	
96.5	97		185006		29.1								
97	97.5		185007	did not	69.5								
97.5	98		185008	include	74.1								
98	98.5		185009		70.3								
		Compo 390			21.7	19.97	0.33		2.5	0.49			
164.5	165		185010		68.4								
165	166.5		185011		41.9								
166.5	167		185012		17.3								
167	167.5		185014		22.6								
167.5	168		185015		17.6								
168	168.5		185016		22.6								
168.5	169	391	185017		21.5							Ro. Max	
169	169.5		185018		29.4							Ro-05-081	
169.5	170		185019		29.3								
170	170.5		185020		27.7								
170.5	171		185021		16.8								
171	171.5		185022		20.5								
171.5	172		185023		40.3								
172	172.5		185024		20.1								
172.5	173		185025		19.5								
173	173.5		185026		16.4								
173.5	174		185027		22.8								
174	174.5		185028		24.2								
174.5	175		185029		30.3								
175	175.5		185030		28.9								
175.5	176		185031		26.8								

ROTARY DRILL HOLE SAMPLING RECORD										ELKVALLEY COAL CORP.			
HOLE NUMBER:		2847	AREA:		BARE						FORDING RIVER OPERATIONS		
FROM	TO	DESCRIPTION	SAMPLE NUMBER	WIDTH	ASH	V.C.M.	I.M.	F.C.	F.S.I.	S	PHOS	REMARKS	
176	176.5		185032	0.5	28.3								
176.5	177	391	185033	0.5	24.3								
177	177.5		185034	0.5	39.1								
		Compo 391			25.8	19.21	0.34		1.5	0.31			
216.5	217		185035	0.5	37.4								
217	217.5		185036	0.5	78.5								
					0.0								
249	249.5		185037	0.5	67.7								
249.5	250		185038	0.5	86.1								
253.5	254		185039	0.5	49.4								
254	254.5		185040	0.5	72.6								
260.5	261		185041	0.5	30.6								
261	261.5		185042	0.5	54.5								
261.5	262		185043	0.5	75.4								
269.5	270		185044	0.5	23.4								
270	270.5		185045	0.5	54.7								
270.5	271		185046	0.5	77.3								
277.5	278		185047	0.5	51.2								
278	278.5		185048	0.5	80.6								

ROTARY DRILL HOLE SAMPLING RECORD

ELKVALLEY COAL CORP.

HOLE NUMBER: 2847		AREA: BARE		FORDING RIVER OPERATIONS								
FROM	TO	DESCRIPTION	SAMPLE NUMBER	WIDTH	ASH	V.C.M.	I.M.	F.C.	F.S.I.	S	PHOS	REMARKS

ROTARY DRILL HOLE SAMPLING RECORD

ELKVALLEY COAL CORP.

HOLE NUMBER: 2847		AREA: BARE								FORDING RIVER OPERATIONS		
FROM	TO	DESCRIPTION	SAMPLE NUMBER	WIDTH	ASH	V.C.M.	I.M.	F.C.	F.S.I.	S	PHOS	REMARKS

ROTARY DRILL HOLE SAMPLING RECORD										ELKVALLEY COAL CORP.		
HOLE NUMBER:		2848		AREA:		BARE				FORDING RIVER OPERATIONS		
FROM	TO	DESCRIPTION	SAMPLE NUMBER	WIDTH	ASH	V.C.M.	I.M.	F.C.	F.S.I.	S	PHOS	REMARKS
37.5	38		185051	0.5	60.4							
38	38.5		185052	0.5	54.1							
38.5	39		185053	0.5	74.9							
39	39.5		185054	0.5	56.6							
39.5	40		185055	0.5	50.4							
40	40.5		185056	0.5	72.3							
40.5	41		185057	0.5	74.8							
41	41.5		185058	0.5	64.8							
41.5	42		185059	0.5	74.6							
42	42.5		185060	0.5	70.9							
42.5	43		185061	0.5	86.1							
65	65.5		185062	0.5	34.2							
65.5	66		185063	0.5	62.5							
66	66.5		185064	0.5	60.1							
66.5	67		185065	0.5	63.4							
91.5	92		185066	0.5	49.1							
92	92.5		185067	0.5	73.4							
101	101.5		185068	0.5	68.3							
101.5	102		185069	0.5	83.9							
107	107.5	426	185070	0.5	30.7							
107.5	108		185071	0.5	25.8							
108	108.5		185072	0.5	22.6							Ro. Max 05-092
108.5	109		185073	0.5	22.9							
109	109.5		185074	0.5	23.5							
109.5	110		185075	0.5	40.2							
110	110.5		185076	0.5	52.8							
110.5	111		185077	0.5	67.7							

ROTARY DRILL HOLE SAMPLING RECORD										ELKVALLEY COAL CORP.		
HOLE NUMBER:		2848		AREA:	BARE		FORDING RIVER OPERATIONS					
FROM	TO	DESCRIPTION	SAMPLE NUMBER	WIDTH	ASH	V.C.M.	I.M.	F.C.	F.S.I.	S	PHOS	REMARKS
218	218.5		185102	0.5	missing							
218.5	219		185103	0.5	88.2							
232	232.5		185104	0.5	52.4							
232.5	233		185105	0.5	91.8							
236	236.5	429	185106	0.5	34.2							
236.5	237		185107	0.5	35.8							
237	237.5		185108	0.5	87.8							
		Compo 429			36.2	14.56	0.41		1	0.52		
241	241.5		185109	0.5	43.9							
241.5	242		185110	0.5	86.7							
243.5	244		185111	0.5	14.7							
244	244.5		185112	0.5	69.4							

ROTARY DRILL HOLE SAMPLING RECORD										ELKVALLEY COAL CORP.		
HOLE NUMBER:		2804		AREA:		CASTLE		FORDING RIVER OPERATIONS				
FROM	TO	DESCRIPTION	SAMPLE NUMBER	WIDTH	ASH	V.C.M.	I.M.	F.C.	F.S.I.	S	PHOS	REMARKS
63	63.5		182776	0.5	54.5							
63.5	64		182777	0.5	69.6							
64	64.5		182778	0.5	83.7							
67.5	68	226	182779	0.5	18.8							Ro Max
68	68.5		182780	0.5	13.6							RO-05-010
68.5	69		182781	0.5	74.6							
69	69.5		182782	0.5	85.2							
		Compo226			17.3	28.66	0.79		7.5	0.76		
71	71.5		182783	0.5	8.8							
71.5	72	226B	182784	0.5	38.9							
72	72.5		182785	0.5	78.3							
		Compo 226B			22.2	29.28	0.77		8	0.81		
76.5	77		182786	0.5	44.4							
77	77.5		182787	0.5	52.9							
77.5	78		182788	0.5	58.9							
78	78.5		182789	0.5	69.3							
78.5	79		182790	0.5	78.2							
95	95.5		182791	0.5	47.6							
95.5	96		182792	0.5	77.1							
96	96.5		182793	0.5	73.3							
96.5	97		182794	0.5	66.1							
97	97.5		182795	0.5	60.9							
97.5	98	227	182796	0.5	21.3							Ro Max
98	98.5		182797	0.5	33.7							RO-05-011
98.5	99		182798	0.5	25.1							
99	99.5		182799	0.5	82.9							
		Compo 227			27.7	24.01	0.74		7.5	1.08		
119	119.5		182801	0.5	79.1							
119.5	120		182802	0.5	86.6							

ROTARY DRILL HOLE SAMPLING RECORD										ELKVALLEY COAL CORP.		
HOLE NUMBER:		2804		AREA:		BARE				FORDING RIVER OPERATIONS		
FROM	TO	DESCRIPTION	SAMPLE NUMBER	WIDTH	ASH	V.C.M.	I.M.	F.C.	F.S.I.	S	PHOS	REMARKS
131	131.5		182803	0.5	55.4							
131.5	132		182804	0.5	73.3							
132	132.5		182805	0.5	62.2							
135.5	136		182806	0.5	35.1							
136	136.5		182807	0.5	85.9							
139.5	140	228	182808	0.5	35.9							
140	140.5		182809	0.5	9.8							
140.5	141		182810	0.5	7.2							Ro Max
141	141.5		182811	0.5	6.3							RO-05-012
141.5	142		182812	0.5	30.5							
142	142.5		182813	0.5	37.7							
142.5	143		182814	0.5	31.7							
143	143.5		182815	0.5	26.1							
143.5	144		182816	0.5	59.9							
144	144.5		182817	0.5	67.9							
144.5	145		182818	0.5	49.5							
145	145.5		182819	0.5	53.6							
145.5	146		182820	0.5	53.5							
146	146.5		182821	0.5	53.4							
146.5	147		182822	0.5	61.3							
147	147.5		182823	0.5	85.7							
		Compo 228			23.5	25.34	0.75		7	0.68		
161.5	162		182824	0.5	13.7							
162	162.5		182825	0.5	7.6							
162.5	163	229	182826	0.5	17.8							
163	163.5		182827	0.5	11.9							Ro Max
163.5	164		182828	0.5	7.7							RO-05-013
164	164.5		182829	0.5	7.9							
164.5	165		182830	0.5	34.4							

ROTARY DRILL HOLE SAMPLING RECORD										ELKVALLEY COAL CORP.		
HOLE NUMBER:		2804		AREA:		BARE				FORDING RIVER OPERATIONS		
FROM	TO	DESCRIPTION	SAMPLE NUMBER	WIDTH	ASH	V.C.M.	I.M.	F.C.	F.S.I.	S	PHOS	REMARKS
165	165.5		182831	0.5	63.5							
		Compo 229			15.4	25.71	0.82		7	0.56		
203.5	204		182832	0.5	47.1							
204	204.5		182833	0.5	45.5							
204.5	205		182834	0.5	89.5							
211	211.5		182835	0.5	76.7							
211.5	212		182836	0.5	88.8							
231.5	232		182837	0.5	27.6							
232	232.5		182838	0.5	82.1							
233	233.5		182839	0.5	55.9							
233.5	234		182840	0.5	84.9							
251	251.5		182841	0.5	73.3							
251.5	252		182842	0.5	76.3							
		230										
253.5	254		182843	0.5	27							
254	254.5	231	182844	0.5	13.7							
254.5	255		182845	0.5	23.1							Ro Max
255	255.5		182846	0.5	24.1							RO-05-014
255.5	256		182847	0.5	18.7							
256	256.5		182848	0.5	80.8							
256.5	257		182849	0.5	22.9							
257	257.5		182850	0.5	55							
257.5	258		182951	0.5	31.1							
258	258.5		182952	0.5	49.7							
258.5	259		182953	0.5	84.3							
259	259.5		182954	0.5	59.1							
259.5	260	232	182955	0.5	25.1							

ROTARY DRILL HOLE SAMPLING RECORD										ELKVALLEY COAL CORP.		
HOLE NUMBER:		2804		AREA:	BARE			FORDING RIVER OPERATIONS				
FROM	TO	DESCRIPTION	SAMPLE NUMBER	WIDTH	ASH	V.C.M.	I.M.	F.C.	F.S.I.	S	PHOS	REMARKS
260.5	261		182956	0.5	69.6							
261	261.5		182957	0.5	44.6							
261.5	262		182958	0.5	22.5							
262	262.5		182959	0.5	46.8							
262.5	263		182960	0.5	46.1							
		Compo 230			22.7	24.2	0.71		7	0.54		
260	260.5		182961	0.5	39.3							
		Compo 231			34	21.75	0.68		6.5	0.47		
263	263.5		182962	0.5	20.9							
263.5	264		182963	0.5	23.2							
264	264.5	233	182964	0.5	13.4							Ro Max
264.5	265		182965	0.5	10.8							RO-05-015
265	265.5		182966	0.5	6.2							
265.5	266		182967	0.5	5.3							
266	266.5		182968	0.5	4.8							
266.5	267		182969	0.5	66.9							
267	267.5		182970	0.5	63.3							
267.5	268		182971	0.5	48.5							
268	268.5		182972	0.5	73.3							
268.5	269		182973	0.5	43.4							
		Compo 232			40	20.62	0.69		6	0.39		
301	301.5		182974	0.5	34.9							
301.5	302	234	182975	0.5	19.5							
302	302.5		182876	0.5	35.9							
		Compo 233			12.2	27.3	0.71		8	0.6		
303.5	304		182877	0.5	58.2							
304	304.5		182878	0.5	78.1							
304.5	305		182879	0.5	79.1							
305	305.5		182880	0.5	57.1							
305.5	306	235	182881	0.5	12.8							
306	306.5		182882	0.5	11.1							

ROTARY DRILL HOLE SAMPLING RECORD										ELKVALLEY COAL CORP.		
HOLE NUMBER:		2804		AREA:	BARE		FORDING RIVER OPERATIONS					
FROM	TO	DESCRIPTION	SAMPLE NUMBER	WIDTH	ASH	V.C.M.	I.M.	F.C.	F.S.I.	S	PHOS	REMARKS
306.5	307		182883	0.5	12.2							
307	307.5		182884	0.5	12.8							
307.5	308		182885	0.5	9.5							
308	308.5		182886	0.5	13.3							
308.5	309		182887	0.5	23.9							
		Compo 234			29	22.11	0.58		6	0.75		
309.5	310		182888	0.5	39.1							
310	310.5		182889	0.5	33.1							Ro Max
310.5	311		182890	0.5	32.9							RO-05-016
311	311.5		182891	0.5	13.4							
311.5	312		182892	0.5	15.6							
312	312.5		182893	0.5	46.2							
312.5	313		182894	0.5	22.2							
313	313.5		182895	0.5	78.4							
313.5	314		182896	0.5	24.7							
314	314.5		182897	0.5	17.9							
314.5	315		182898	0.5	30.7							
315	315.5		182899	0.5	9.3							
315.5	316		182900	0.5	12.1							
316	316.5		182901	0.5	10.4							
316.5	317		182902	0.5	76.9							
		Compo 235			23.4	23.55	0.54		7	0.53		
328.5	329		182903	0.5	76.8							
329	329.5		182904	0.5	76.5							
329.5	330		182905	0.5	60.7							
330	330.5		182906	0.5	65.6							
330.5	331		182907	0.5	80.9							
331	331.5		182908	0.5	80.1							
341.5	342		182909	0.5	66.8							
342	342.5		182910	0.5	85.5							

ROTARY DRILL HOLE SAMPLING RECORD										ELKVALLEY COAL CORP.		
HOLE NUMBER:		2804		AREA:		BARE				FORDING RIVER OPERATIONS		
FROM	TO	DESCRIPTION	SAMPLE NUMBER	WIDTH	ASH	V.C.M.	I.M.	F.C.	F.S.I.	S	PHOS	REMARKS
344	344.5		182911	0.5	28.7							
344.5	345		182912	0.5	79.3							
347	347.5	236	182913	0.5	42.5							
347.5	348		182914	0.5	29.3							
348	348.5		182915	0.5	47.5							
348.5	349		182916	0.5	80.2							
		Compo 236			36.8	19.9	0.5		5.5	0.8		
352.5	353		182917	0.5	67.3							
353	353.5		182918	0.5	32.1							
353.5	354	237	182919	0.5	38.4							Ro. Max 05-095
354	354.5		182920	0.5	33.1							
354.5	355		182921	0.5	49.1							
355	355.5		182922	0.5	70.2							
355.5	356		182923	0.5	66.9							
		Compo 237			35.4	19.93	0.47		5.5	0.66		
417	417.5		182924	0.5	31.9							
417.5	418		182925	0.5	22.6							
418	418.5	238	182926	0.5	16.7							
418.5	419		182927	0.5	42.5							
419	419.5		182928	0.5	34.7							
419.5	420		182929	0.5	11.2							
420	420.5		182930	0.5	11.7							
420.5	421		182931	0.5	9.5							
421	421.5		182932	0.5	19.4							
421.5	422		182933	0.5	54.8							
422	422.5		182934	0.5	72.2							
422.5	423		182935	0.5	61.1							
423	423.5		182936	0.5	66.4							
423.5	424	239	182937	0.5	41.3							
424	424.5		182938	0.5	18.3							

ROTARY DRILL HOLE SAMPLING RECORD										ELKVALLEY COAL CORP.		
HOLE NUMBER:		2804		AREA:	BARE			FORDING RIVER OPERATIONS				
FROM	TO	DESCRIPTION	SAMPLE NUMBER	WIDTH	ASH	V.C.M.	I.M.	F.C.	F.S.I.	S	PHOS	REMARKS
424.5	425		182939	0.5	25.9							
425	425.5		182940	0.5	13.8							
425.5	426		182941	0.5	21.3							Ro Max
426	426.5		182942	0.5	30.1							RO-05-017
426.5	427		182943	0.5	12.5							
427	427.5		182944	0.5	20.4							
427.5	428		182945	0.5	13.4							
428	428.5		182946	0.5	37.5							
428.5	429		182947	0.5	24.9							
429	429.5		182948	0.5	39.1							
429.5	430		182949	0.5	56.7							
		Compo 238			23.5	19.56	0.5		2	0.47		
432.5	433		182950	0.5	67.6							
		Compo 239			26	20.6	0.63		2.5	0.31		
434.5	435		182951	0.5	57.1							
435	435.5		182952	0.5	66.7							
435.5	436		182953	0.5	58.2							
513.5	514		182954	0.5	17.1							
514	514.5		182955	0.5	19.3							
514.5	515		182956	0.5	9.9							
515	515.5	240	182957	0.5	10.9							
515.5	516		182958	0.5	46.9							
516	516.5		182959	0.5	36.3							
516.5	517		182960	0.5	9.2							
517	517.5		182961	0.5	13.4							Ro Max
517.5	518		182962	0.5	12.7							RO-05-018
518	518.5		182963	0.5	18.1							
518.5	519		182964	0.5	14.6							
519	519.5		182965	0.5	21.1							
519.5	520		182966	0.5	20.4							

ROTARY DRILL HOLE SAMPLING RECORD										ELKVALLEY COAL CORP.			
HOLE NUMBER:		2804	AREA:		BARE						FORDING RIVER OPERATIONS		
FROM	TO	DESCRIPTION	SAMPLE NUMBER	WIDTH	ASH	V.C.M.	I.M.	F.C.	F.S.I.	S	PHOS	REMARKS	
520	520.5		182967	0.5	17.4								
520.5	521		182968	0.5	20.1								
521	521.5		182969	0.5	14.5								
521.5	522		182970	0.5	27.6								
522	522.5		182971	0.5	50.8								
		Compo 240			19.9	21.53	0.56		2	0.38			
527.5	528		182972	0.5	68.9								
528	528.5		182973	0.5	85.7								
530	530.5	241	182974	0.5	27.9								
530.5	531		182975	0.5	26.8							Ro Max	
531	531.5		182976	0.5	19.5							RO-05-019	
531.5	532		182977	0.5	28.6								
532	532.5		182978	0.5	51.1								
532.5	533		182979	0.5	70.4								
533	533.5		182980	0.5	50.3								
533.5	534		182981	0.5	22.3								
534	534.5		182982	0.5	79.6								
		Compo 241			25.9	19.8	0.47		3.5	0.49			

ROTARY DRILL HOLE SAMPLING RECORD										ELKVALLEY COAL CORP.		
HOLE NUMBER:		2803		AREA:	BARE		FORDING RIVER OPERATIONS					
FROM	TO	DESCRIPTION	SAMPLE NUMBER	WIDTH	ASH	V.C.M.	I.M.	F.C.	F.S.I.	S	PHOS	REMARKS
12.5	13		181426	0.5	44.3							
13	13.5		181427	0.5	5.2							RoMax 062-06
13.5	14	363	181428	0.5	5.4							
14	14.5		181429	0.5	45.2							
14.5	15		181430	0.5	83.6							
		Compo 363			16.6	26.76	0.71		7.5	0.67		
21	21.5		181431	0.5	52.8							
21.5	22		181432	0.5	27.3							
22	22.5	364	181433	0.5	26.2							RoMax 063-05
22.5	23		181434	0.5	42.8							
23	23.5		181435	0.5	59.5							
23.5	24		181436	0.5	71.6							
		Compo 364			33.6	22.7	0.84		6	0.94		
58.5	59		181437	0.5	53.8							
59	59.5		181438	0.5	79.4							
78.5	79		181439	0.5	65.6							
79	79.5		181440	0.5	61							
79.5	80		181441	0.5	51.2							
80	80.5		181442	0.5	65.4							
80.5	81		181443	0.5	84.6							
77.5	78		181444	0.5	61.2							
78	78.5		181445	0.5	69.8							
88.5	89		181446	0.5	67							
89	89.5		181447	0.5	28.7							
89.5	90		181448	0.5	19.1							RoMax 064-05
90	90.5	365	181449	0.5	38.9							
90.5	91		181450	0.5	24.7							
		compo 365			29.1	25.3	0.62		7.5	0.73		
103	103.5		181451	0.5	28.7							

ROTARY DRILL HOLE SAMPLING RECORD										ELKVALLEY COAL CORP.		
HOLE NUMBER:		2803		AREA:		BARE				FORDING RIVER OPERATIONS		
FROM	TO	DESCRIPTION	SAMPLE NUMBER	WIDTH	ASH	V.C.M.	I.M.	F.C.	F.S.I.	S	PHOS	REMARKS
181	181.5		181479	0.5	13.1							
181.5	182		181480	0.5	32.3							
182	182.5		181481	0.5	27.7							
182.5	183		181482	0.5	26.4							
183	183.5		181483	0.5	60.3							
183.5	184		181484	0.5	80.1							
		Compo 213			23.2	24.77	0.72		7	0.54		
197	197.5		181485	0.5	72							
197.5	198		181486	0.5	84.1							
198	198.5		181487	0.5	69.8							
200	200.5		181488	0.5	61.7							
200.5	201		181489	0.5	23.3							
201	201.5	214	181490	0.5	18.4							
201.5	202		181491	0.5	22.3							
202	202.5		181492	0.5	85.8							
		Compo 214			22.8	25.41	0.63		7.5	0.97		
203	203.5		181493	0.5	31.1							
203.5	204		181494	0.5	34.7							
204	204.5		181495	0.5	47.8							
204.5	205	215	181496	0.5	35.3							
205	205.5		181497	0.5	34.2							
205.5	206		181498	0.5	24.1							RoMax
206	206.5		181499	0.5	19.5							RO-05-003
206.5	207		181500	0.5	20.9							
207	207.5		182626	0.5	21.4							
207.5	208		182627	0.5	19.2							
208	208.5		182628	0.5	15.7							
208.5	209		182629	0.5	47.8							
209	209.5		182630	0.5	83.9							
		Compo215			29.8	23.26	0.58		6	2.09		

ROTARY DRILL HOLE SAMPLING RECORD										ELKVALLEY COAL CORP.		
HOLE NUMBER:		2803		AREA:		BARE				FORDING RIVER OPERATIONS		
FROM	TO	DESCRIPTION	SAMPLE NUMBER	WIDTH	ASH	V.C.M.	I.M.	F.C.	F.S.I.	S	PHOS	REMARKS
213.5	214		182631	0.5	77.5							
214	214.5		182632	0.5	85.9							
214.5	215		182633	0.5	72.5							
215.5	216	216	182634	0.5	28.2							
216	216.5		182635	0.5	39.9							
216.5	217		182636	0.5	63.8							
217	217.5		182637	0.5	70.2							
217.5	218		182638	0.5	52.5							
218	218.5	217	182639	0.5	11.8							RoMax
218.5	219		182640	0.5	15.8							RO-05-004
219	219.5		182641	0.5	77.2							
		Compo 216			34.3	24.4	0.61		5.5	1.61		
221	221.5		182642	0.5	29.1							
221.5	222	218	182643	0.5	30.3							
222	222.5		182644	0.5	70.5							
222.5	223		182645	0.5	44.2							
223	223.5		182646	0.5	71.1							
223.5	224		182647	0.5	85.1							
		Compo 217			13.5	26.74	0.59		8	0.96		
309.5	310		182648	0.5	25.2							
310	310.5	219	182649	0.5	34.6							
310.5	311		182650	0.5	21							
311	311.5		182651	0.5	64.1							
311.5	312		182652	0.5	45.1							
312	312.5		182653	0.5	13.1							
312.5	313	220	182654	0.5	14.2							
313	313.5		182655	0.5	15.6							
313.5	314		182656	0.5	25.6							
314	314.5		182657	0.5	72.4							
314.5	315		182658	0.5	77.8							

ROTARY DRILL HOLE SAMPLING RECORD										ELKVALLEY COAL CORP.		
HOLE NUMBER:		2803		AREA:		BARE				FORDING RIVER OPERATIONS		
FROM	TO	DESCRIPTION	SAMPLE NUMBER	WIDTH	ASH	V.C.M.	I.M.	F.C.	F.S.I.	S	PHOS	REMARKS
315	315.5		182659	0.5	77.4							
315.5	316		182660	0.5	52.9							
316	316.5		182661	0.5	36.8							
316.5	317		182662	0.5	22.8							
317	317.5	221	182663	0.5	10.6							
317.5	318		182664	0.5	15.2							
318	318.5		182665	0.5	16.3							RoMax
318.5	319		182666	0.5	19.1							Maceral Analysis
319	319.5		182667	0.5	30.8							RO-05-005
319.5	320		182668	0.5	24.5							
320	320.5		182669	0.5	31.7							
320.5	321		182670	0.5	20.6							
321	321.5		182671	0.5	33.6							
321.5	322		182672	0.5	18.7							
322	322.5		182673	0.5	62.8							
322.5	323		182674	0.5	34.8							
323	323.5		182675	0.5	86.2							
323.5	324		182676	0.5	88.4							
		Compo 218			31.2	19.87	0.57		4	0.67		
325.5	326		182677	0.5	49.4							
326	326.5		182678	0.5	45.1							
326.5	327		182679	0.5	85.3							
		Compo 219			27	21.67	0.6		4.5	0.5		
333.5	334		182680	0.5	73.9							
334	334.5		182681	0.5	91.8							
		Compo 220			17.1	20.82	0.6		2	0.38		
352	352.5		182682	0.5	18.6							
352.5	353	222	182683	0.5	12.1							RoMax
353	353.5		182684	0.5	23.5							RO-5-006
353.5	354		182685	0.5	60.8							
354	354.5		182686	0.5	83.1							

ROTARY DRILL HOLE SAMPLING RECORD										ELKVALLEY COAL CORP.		
HOLE NUMBER:		2803		AREA:		BARE		FORDING RIVER OPERATIONS				
FROM	TO	DESCRIPTION	SAMPLE NUMBER	WIDTH	ASH	V.C.M.	I.M.	F.C.	F.S.I.	S	PHOS	REMARKS
411	411.5		182687	0.5	41.6							
411.5	412	223	182688	0.5	27.1							
412	412.5		182689	0.5	11.8							
412.5	413		182690	0.5	21.9							
413	413.5		182691	0.5	31.5							
413.5	414		182692	0.5	37.7							RoMax
414	414.5		182693	0.5	60.1							Maceral Analysis
414.5	415		182694	0.5	43.4							RO-05-007
415	415.5		182695	0.5	14.4							
415.5	416		182696	0.5	15.6							
416	416.5		182697	0.5	17.1							
416.5	417		182698	0.5	15.9							
417	417.5		182699	0.5	33.3							
417.5	418		182700	0.5	22.6							
418	418.5		182701	0.5	67.2							
418.5	419		182702	0.5	74.8							
419	419.5		182703	0.5	75.3							
419.5	420	224	182704	0.5	33.8							
420	420.5		182705	0.5	57.6							
420.5	421		182706	0.5	82.9							
421	421.5		182707	0.5	22.4							
421.5	422		182708	0.5	29.8							
422	422.5		182709	0.5	13.9							RoMax
422.5	423		182710	0.5	32.3							RO-05-008
423	423.5		182711	0.5	26.3							
423.5	424		182712	0.5	33.3							
424	424.5		182713	0.5	33.9							
424.5	425		182714	0.5	21.9							
425	425.5		182715	0.5	43.7							
425.5	426		182716	0.5	15.1							
426	426.5		182717	0.5	29.3							

ROTARY DRILL HOLE SAMPLING RECORD										ELKVALLEY COAL CORP.		
HOLE NUMBER:		2803		AREA:		BARE				FORDING RIVER OPERATIONS		
FROM	TO	DESCRIPTION	SAMPLE NUMBER	WIDTH	ASH	V.C.M.	I.M.	F.C.	F.S.I.	S	PHOS	REMARKS
426.5	427		182718	0.5	37.3							
427	427.5		182719	0.5	36.3							
427.5	428		182720	0.5	31.6							
428	428.5		182721	0.5	84.4							
428.5	429		182722	0.5	90.6							
		Compo 221			27.7	21.41	0.64		2.5	0.27		
431	431.5		182723	0.5	24.5							
431.5	432		182724	0.5	54.4							
432	432.5		182725	0.5	48.1							
432.5	433		182726	0.5	88.3							
		Compo 222			18.4	19.37	0.71		1.5	0.5		
482.5	483		182727	0.5	55.2							
483	483.5		182728	0.5	81.7							
483.5	484		182729	0.5	62.9							
484	484.5		182730	0.5	60.7							
484.5	485		182731	0.5	36.6							
485	485.5	225	182732	0.5	21.4							
485.5	486		182733	0.5	37.3							
486	486.5		182734	0.5	64.8							
486.5	487		182735	0.5	27.9							RoMax
487	487.5		182736	0.5	12.1							Maceral Analysis
487.5	488		182737	0.5	25.8							RO-05-009
488	488.5		182738	0.5	18.7							
488.5	489		182739	0.5	16.2							
489	489.5		182740	0.5	13.5							
489.5	490		182741	0.5	23.8							
490	490.5		182742	0.5	22.6							
490.5	491		182743	0.5	26.9							
491	491.5		182744	0.5	16.9							
491.5	492		182745	0.5	23.4							
492	492.5		182746	0.5	52.8							

ROTARY DRILL HOLE SAMPLING RECORD											ELKVALLEY COAL CORP.		
HOLE NUMBER:		2803			AREA:	BARE						FORDING RIVER OPERATIONS	
FROM	TO	DESCRIPTION	SAMPLE NUMBER	WIDTH	ASH	V.C.M.	I.M.	F.C.	F.S.I.	S	PHOS	REMARKS	
492.5	493		182747	0.5	67.3								
493	493.5		182748	0.5	80.5								
		Compo 223			28.9	18.66	0.73		3	0.45			
511	511.5		182749	0.5	61.3								
511.5	512		182750	0.5	75.2								
512	512.5		182751	0.5	84.4								
512.5	513		182752	0.5	81.1								
513	513.5		182753	0.5	87.8								
513.5	514		182754	0.5	84.1								
		Compo 224			35.3	18.98	0.71		1	0.24			
550	550.5		182755	0.5	34.4								
550.5	551		182756	0.5	52.7								
551	551.5		182757	0.5	93.5								
		Compo 225			26.5	18.15	0.63		1	0.34			

ROTARY DRILL HOLE SAMPLING RECORD										ELKVALLEY COAL CORP.		
HOLE NUMBER:		RH 2802		AREA:		BARE				FORDING RIVER OPERATIONS		
FROM	TO	DESCRIPTION	SAMPLE NUMBER	WIDTH	ASH	V.C.M.	I.M.	F.C.	F.S.I.	S	PHOS	REMARKS
34.5	35		182601	0.5	60.6							
35	35.5		182602	0.5	76.3							
35.5	36		182603	0.5	83.2							
57	57.5		182604	0.5	28.8							
57.5	58	377	182605	0.5	8.1							Ro. Max
58	58.5		182606	0.5	9.7							Ro-05-071
58.5	59		182607	0.5	22.8							
		Compo 377			18.1	25.82	0.53		3.5	0.52		
61	61.5		182608	0.5	47.3							
61.5	62		182610	0.5	77.5							
80	80.5		182611	0.5	67.5							
80.5	81		182612	0.5	78.5							
82	82.5	378	182613	0.5	38.8							
82.5	83		182614	0.5	12.9							
		Compo 378			27.6	35.46	0.38		5	0.53		
100	100.5		182615	0.5	67.8							
100.5	101		182616	0.5	42.6							
101	101.5		182617	0.5	3.9							Ro. Max
101.5	102	379	182618	0.5	10.6							Ro-05-072
		Compo 379			20.2	27.19	0.51		8	0.71		
108	108.5		182619	0.5	41.6							
108.5	109		182620	0.5	37.7							
109	109.5	380	182621	0.5	40.8							
109.5	110		182622	0.5	64.3							
110	110.5		182623	0.5	72.1							
110.5	111		182624	0.5	69.1							
111	111.5		182625	0.5	37.8							
111.5	112		181253	0.5	54.1							

ROTARY DRILL HOLE SAMPLING RECORD										ELKVALLEY COAL CORP.		
HOLE NUMBER:		RH 2802		AREA:		BARE				FORDING RIVER OPERATIONS		
FROM	TO	DESCRIPTION	SAMPLE NUMBER	WIDTH	ASH	V.C.M.	I.M.	F.C.	F.S.I.	S	PHOS	REMARKS
148	148.5		181254	0.5	6.4							
148.5	149		181255	0.5	10.1							
149	149.5	381	181256	0.5	5.4							Ro. Max
149.5	150		181257	0.5	3.7							Ro-05-073
150	150.5		181258	0.5	9.5							
150.5	151		181259	0.5	9.9							
151	151.5		181260	0.5	12.4							
151.5	152		181261	0.5	72.8							
		Compo 380			42.3	28.66	0.39		3.5	0.43		
160.5	161		181262	0.5	54.5							
161	161.5		181263	0.5	81.3							
		Compo 381			8.6	27.89	0.55		7.5	0.59		
179.5	180		181264	0.5	64.3							
180	180.5		181265	0.5	77.7							
188	188.5		181266	0.5	11.9							
188.5	189	382	181267	0.5	12.8							
189	189.5		181268	0.5	73.9							
		Compo 382			13	26.27	0.55		7.5	0.63		
198	198.5		181269	0.5	18.3							
198.5	199		181270	0.5	26.5							
199	199.5	383	181271	0.5	54.5							
199.5	200		181272	0.5	25.4							Ro. Max
200	200.5		181273	0.5	34.7							Ro-05-074
200.5	201		181274	0.5	55.2							
201	201.5		181275	0.5	25.1							
201.5	202		181276	0.5	10.8							
202	202.5		181277	0.5	26.3							
202.5	203		181278	0.5	70.8							
203	203.5		181279	0.5	79.6							
		Compo 383			32.1	21.87	0.5		6.5	0.51		

ROTARY DRILL HOLE SAMPLING RECORD										ELKVALLEY COAL CORP.		
HOLE NUMBER:		RH 2802		AREA:		BARE				FORDING RIVER OPERATIONS		
FROM	TO	DESCRIPTION	SAMPLE NUMBER	WIDTH	ASH	V.C.M.	I.M.	F.C.	F.S.I.	S	PHOS	REMARKS
219	219.5		181280	0.5	32.7							
219.5	220		181281	0.5	17.9							
220	220.5		181282	0.5	27.9							
220.5	221	384	181283	0.5	27.9							
221	221.5		181284	0.5	15.1							Ro. Max
221.5	222		181285	0.5	13.5							Ro-05-075
222	222.5		181286	0.5	16.1							
222.5	223		181287	0.5	8.5							
223	223.5		181288	0.5	12.6							
223.5	224		181289	0.5	66.9							
		Compo 384			20.5	24.35	0.44		6.5	0.65		
286.5	287		181290	0.5	31.6							
287	287.5		181291	0.5	41.6							
287.5	288	385	181292	0.5	44.4							Ro. Max
288	288.5		181293	0.5	25.5							Ro-05-076
288.5	289		181294	0.5	22.7							
289	289.5		181295	0.5	61.8							
289.5	290		181296	0.5	80.7							
290	290.5		181297	0.5	76.6							
		Compo 385			35.1	20.68	0.49		6	0.58		

ROTARY DRILL HOLE SAMPLING RECORD										ELKVALLEY COAL CORP.		
HOLE NUMBER:		2801		AREA:		BARE				FORDING RIVER OPERATIONS		
FROM	TO	DESCRIPTION	SAMPLE NUMBER	WIDTH	ASH	V.C.M.	I.M.	F.C.	F.S.I.	S	PHOS	REMARKS
65	65.5		181301	0.5	42.5							
65.5	66		181302	0.5	46.6							
66	66.5		181303	0.5	49.7							
66.5	67		181304	0.5	52.6							
67	67.5		181305	0.5	70.4							
67.5	68		181306	0.5	50.1							
68	68.5		181307	0.5	78.4							
70	70.5		181308	0.5	26.5							RoMax 065-05
70.5	71	366	181309	0.5	28.6							
71	71.5		181310	0.5	73.9							
		Compo 366			27.6	29.39	0.66		6.5	1.14		
78	78.5		181311	0.5	33.1							
78.5	79	367	181312	0.5	41.1							
		Compo 367			39.2	24.83	0.63		5.5	0.69		
96	96.5		181313	0.5	12.3							
96.5	97	368	181314	0.5	21.5							
		Compo 368			18.4	31.17	0.73		7.5	0.86		
104	104.5		181315	0.5	60.9							
104.5	105		181316	0.5	52.5							
105	105.5		181317	0.5	47.3							
166.5	167		181318	0.5	10.9							
167	167.5		181319	0.5	74.2							
167.5	168		181320	0.5	83.5							
168.5	169		181321	0.5	72.9							
169	169.5		181322	0.5	74.1							
171.5	172		181323	0.5	69.5							
172	172.5		181324	0.5	49.6							

ROTARY DRILL HOLE SAMPLING RECORD										ELKVALLEY COAL CORP.		
HOLE NUMBER:		2801		AREA:		BARE				FORDING RIVER OPERATIONS		
FROM	TO	DESCRIPTION	SAMPLE NUMBER	WIDTH	ASH	V.C.M.	I.M.	F.C.	F.S.I.	S	PHOS	REMARKS
172.5	173		181325	0.5	39.2							
178	178.5		181326	0.5	68.7							
178.5	179		181327	0.5	60.8							
183.5	184		181328	0.5	66.3							
184	184.5		181329	0.5	55.1							
184.5	185		181330	0.5	57.5							
225	225.5		181331	0.5	24.3							
225.5	226		181332	0.5	81.4							
267	267.5		181333	0.5	56.8							
267.5	268		181334	0.5	70.4							
268	268.5		181335	0.5	41.3							
268.5	269		181336	0.5	54.5							
298	298.5		181337	0.5	50.4							
298.5	299		181338	0.5	71.2							
299.5	300		181339	0.5	33.9							
300	300.5		181340	0.5	60.2							
300.5	301		181341	0.5	80.3							
345	345.5		181342	0.5	11.2							
345.5	346	369	181343	0.5	18.6							
		Compo 369			16.9	29.99	0.63		8	0.49		
346.5	347		181344	0.5	24.7							RoMax 066-05
347	347.5	370	181345	0.5	18.1							
347.5	348		181346	0.5	61.7							
348	348.5		181347	0.5	62.1							

ROTARY DRILL HOLE SAMPLING RECORD										ELKVALLEY COAL CORP.		
HOLE NUMBER:			AREA:	BARE						FORDING RIVER OPERATIONS		
FROM	TO	DESCRIPTION	SAMPLE NUMBER	WIDTH	ASH	V.C.M.	I.M.	F.C.	F.S.I.	S	PHOS	REMARKS
348.5	349		181348	0.5	62.7							
349	349.5		181349	0.5	34.7							
		Compo 370			21.5	28.55	0.73		8	0.47		
364	364.5		181350	0.5	57.4							
364.5	365		181351	0.5	49.8							
365	365.5		181352	0.5	19.4							
365.5	366		181353	0.5	46.1							
393.5	394		181354	0.5	15.6							
394	394.5		181355	0.5	13.6							RoMax 067-05
394.5	395	371	181356	0.5	10.7							
395	395.5		181357	0.5	27.6							
395.5	396		181358	0.5	11.1							
396	396.5		181359	0.5	7.9							
396.5	397		181360	0.5	15.3							
397	397.5		181361	0.5	59.2							
397.5	398		181362	0.5	53.5							
398	398.5		181363	0.5	39.8							
398.5	399		181364	0.5	61.9							
		Compo 371			14.2	26.41	0.69		7.5	0.59		
400	400.5		181365	0.5	27.3							
400.5	401		181366	0.5	78.8							
399.5	400		181367	0.5	46.1							
411	411.5		181368	0.5	7.9							
411.5	412	372	181369	0.5	8.3							
412	412.5		181370	0.5	37.1							
412.5	413		181371	0.5	76.8							
		Compo 372			18.8	24.31	0.62		7	0.61		
423	423.5		181372	0.5	38.5							
423.5	424	373	181373	0.5	12.9							

ROTARY DRILL HOLE SAMPLING RECORD											ELKVALLEY COAL CORP.	
HOLE NUMBER:		2801		AREA:		BARE				FORDING RIVER OPERATIONS		
FROM	TO	DESCRIPTION	SAMPLE NUMBER	WIDTH	ASH	V.C.M.	I.M.	F.C.	F.S.I.	S	PHOS	REMARKS
424	424.5		181374	0.5	18.8							
424.5	425		181375	0.5	11.7							
425	425.5	373	181378	0.5	8.2							RoMax 068-05
425.5	426		181379	0.5	9.9							
426	426.5		181380	0.5	53.5							
426.5	427		181381	0.5	8.3							
427	427.5		181382	0.5	8.9							
427.5	428		181383	0.5	14.1							
428	428.5		181384	0.5	64.4							
		Compo 373			18	25.45	0.56		7.5	0.51		
444	444.5		181385	0.5	17.2							
444.5	445		181386	0.5	8.9							
445	445.5		181387	0.5	30.3							
445.5	446	374	181388	0.5	41.8							RoMax 069-05
446	446.5		181389	0.5	14.6							
446.5	447		181390	0.5	27.1							
447	447.5		181391	0.5	14.1							
447.5	448		181392	0.5	9.8							
448	448.5		181393	0.5	13.3							
		Compo 374			19.9	24.49	0.64		7	0.57		
476.5	477		181394	0.5	37.8							
477	477.5		181395	0.5	29.2							
477.5	478		181396	0.5	58.9							
478.5	479		181397	0.5	68.4							
479	479.5		181398	0.5	48.2							
479.5	480		181399	0.5	21.5							
480	480.5		181400	0.5	23.5							
480.5	481	375	181401	0.5	36.9							
481	481.5		181402	0.5	43.6							
481.5	482		181403	0.5	50.9							

ROTARY DRILL HOLE SAMPLING RECORD										ELKVALLEY COAL CORP.		
HOLE NUMBER:		2801		AREA:		BARE		FORDING RIVER OPERATIONS				
FROM	TO	DESCRIPTION	SAMPLE NUMBER	WIDTH	ASH	V.C.M.	I.M.	F.C.	F.S.I.	S	PHOS	REMARKS
482	482.5		181404	0.5	83.7							
		Compo 375			32.3	20.67	0.55		6	0.64		
494.5	495		181405	0.5	35.4							
495	495.5		181406	0.5	65.8							RoMax 070-05
495.5	496	376	181407	0.5	37.7							
496	496.5		181408	0.5	19.3							
496.5	497		181409	0.5	32.2							
497	497.5		181410	0.5	73.5							
497.5	498		181411	0.5	85.2							
		Compo 376			37.7	19.59	0.61		7	0.61		

ROTARY DRILL HOLE SAMPLING RECORD										ELKVALLEY COAL CORP.		
HOLE NUMBER:		2800		AREA:	CASTLE		FORDING RIVER OPERATIONS					
FROM	TO	DESCRIPTION	SAMPLE NUMBER	WIDTH	ASH	V.C.M.	I.M.	F.C.	F.S.I.	S	PHOS	REMARKS
24.5	25	347	181001	0.5	9.8							
25	25.5		181002	0.5	13.1							RoMax 054-05
25.5	26		181003	0.5	10.2							
26	26.5		181004	0.5	71.8							
		Compo 347			12	30.25	0.71		8	0.74		
77	77.5		181005	0.5	13.5							
77.5	78	348	181006	0.5	13.4							Romax 055-05
78	78.5		181007	0.5	14.1							
78.5	79		181008	0.5	8.4							
79	79.5		181009	0.5	35.9							
79.5	80		181010	0.5	50.5							
80	80.5		181011	0.5	74.6							
80.5	81		181012	0.5	75.1							
		Compo 348			15.8	27.34	0.65		6	0.55		
81.5	82		181013	0.5	26.1							
82	82.5		181014	0.5	59							
82.5	83		181015	0.5	67.3							
83	83.5		181016	0.5	56.4							
83.5	84		181017	0.5	73.8							
84	84.5		181018	0.5	53.5							
84.5	85		181019	0.5	64.6							
85	85.5		181020	0.5	66.5							
85.5	86		181021	0.5	75.5							
86	86.5		181022	0.5	70							
86.5	87		181023	0.5	81.4							
113	113.5		181024	0.5	60.8							
113.5	114		181025	0.5	53.2							
114	114.5		181026	0.5	24.9							
114.5	115		181027	0.5	64.7							
115	115.5		181028	0.5	88.4							

ROTARY DRILL HOLE SAMPLING RECORD										ELKVALLEY COAL CORP.		
HOLE NUMBER:		2800		AREA:		BARE				FORDING RIVER OPERATIONS		
FROM	TO	DESCRIPTION	SAMPLE NUMBER	WIDTH	ASH	V.C.M.	I.M.	F.C.	F.S.I.	S	PHOS	REMARKS
115.5	116		181029	0.5	67.5							
116	116.5	349	181030	0.5	43.7							
116.5	117		181031	0.5	34.7							
117	117.5		181032	0.5	65.3							
117.5	118		181033	0.5	53.6							
118	118.5	350	181034	0.5	41.0							
118.5	119		181035	0.5	89.0							
119	119.5		181036	0.5	25.7							
		Compo 349			39.9	21.99	0.61		5	0.5		
162.5	163		181037	0.5	11.5							
163	163.5	351	181038	0.5	9.9							
163.5	164		181039	0.5	15.8							RoMax 056-05
164	164.5		181040	0.5	4.9							
164.5	165		181041	0.5	4.7							
165	165.5		181042	0.5	17.4							
165.5	166		181043	0.5	53.0							
166	166.5		181044	0.5	5.8							
166.5	167		181045	0.5	6.0							
167	167.5		181046	0.5	34.0							
167.5	168		181047	0.5	52.7							
168	168.5		181048	0.5	47.3							
168.5	169		181049	0.5	37.0							
169	169.5		181050	0.5	48.2							
		Compo 350			52.7	16.69	0.55		3	0.37		
173.5	174	352	181051	0.5	37.4							
174	174.5		181052	0.5	29							
174.5	175		181053	0.5	66.2							
		Compo 351			10.9	26.81	0.63		7.5	0.55		
186	186.5	353	181054	0.5	10.5							
186.5	187		181055	0.5	10.3							
		Compo 352			34.5	22.34	0.53		6	0.65		

ROTARY DRILL HOLE SAMPLING RECORD										ELKVALLEY COAL CORP.		
HOLE NUMBER:		2800		AREA:		BARE				FORDING RIVER OPERATIONS		
FROM	TO	DESCRIPTION	SAMPLE NUMBER	WIDTH	ASH	V.C.M.	I.M.	F.C.	F.S.I.	S	PHOS	REMARKS
195.5	196	354	181056	0.5	10.5							
196	196.5		181057	0.5	10.6							
196.5	197		181058	0.5	28.5							
		Compo 353			10.8	27.16	0.59		8.5	0.76		
198	198.5		181059	0.5	30.4							
198.5	199	355	181060	0.5	47.4							
199	199.5		181061	0.5	36.7							RoMax 057-05
199.5	200		181062	0.5	20.4							
200	200.5		181063	0.5	29.3							
200.5	201		181064	0.5	11.7							
201	201.5		181065	0.5	32.1							
201.5	202		181066	0.5	61							
		Compo 354			13.4	26.54	0.71		8	0.64		
227	227.5		181067	0.5	68.4							
227.5	228		181068	0.5	63.4							
228	228.5		181069	0.5	24.8							
228.5	229	356	181070	0.5	35.1							
229	229.5		181071	0.5	38.1							RoMax 058-05
229.5	230		181072	0.5	24.5							
230	230.5		181073	0.5	17.5							
230.5	231		181074	0.5	11.6							
231	231.5		181075	0.5	14.6							
231.5	232		181076	0.5	69.8							
		Compo 355			30.3	24.28	0.64		7	0.45		
263	263.5		181077	0.5	57.2							
263.5	264		181078	0.5	70.2							
		Compo 356			24.8	24.39	0.63		7	0.54		
291.5	292		181079	0.5	25.9							
292	292.5	357	181080	0.5	44.2							
292.5	293		181081	0.5	26.4							
293	293.5		181082	0.5	24.2							

ROTARY DRILL HOLE SAMPLING RECORD										ELKVALLEY COAL CORP.					
HOLE NUMBER:		2800		AREA:	BARE								FORDING RIVER OPERATIONS		
FROM	TO	DESCRIPTION	SAMPLE NUMBER	WIDTH	ASH	V.C.M.	I.M.	F.C.	F.S.I.	S	PHOS	REMARKS			
293.5	294		181083	0.5	41.3										
		Compo 357			32.6	21.54	0.59		7.5	0.63					
322.5	323	358	181084	0.5	13.6										
323	323.5		181085	0.5	11.2										
323.5	324		181086	0.5	81										
		Compo 358			12.1	27.91	0.55		9	1.06					
328.5	329		181087	0.5	32.2										
329	329.5	359	181088	0.5	29.3										
329.5	330		181089	0.5	17.2										
330	330.5		181090	0.5	63										
330.5	331		181091	0.5	83.1										
331	331.5		181092	0.5	11.2										
		Compo 359			28.3	20.82	0.6		5.5	0.88					
336	336.5		181093	0.5	34.8										
336.5	337	360	181094	0.5	34.5							RoMax 059-05			
337	337.5		181095	0.5	64.6										
337.5	338		181096	0.5	32.5										
338	338.5		181097	0.5	55.2										
338.5	339		181098	0.5	60.1										
339	339.5		181099	0.5	80.5										
		Compo 360			42.9	17.19	0.57		4	0.55					
342	342.5		181100	0.5	29.2										
342.5	343	361	181101	0.5	25										
343	343.5		181102	0.5	18.3							RoMax 060-05			
343.5	344		181103	0.5	15.3										
344	344.5		181104	0.5	31.7										
344.5	345		181105	0.5	22.4										
345	345.5		181106	0.5	32.9										
345.5	346		181107	0.5	53.5										
346	346.5		181108	0.5	53.2										
346.5	347		181109	0.5	73.3										

ROTARY DRILL HOLE SAMPLING RECORD										ELKVALLEY COAL CORP.		
HOLE NUMBER:		2800		AREA:		BARE		FORDING RIVER OPERATIONS				
FROM	TO	DESCRIPTION	SAMPLE NUMBER	WIDTH	ASH	V.C.M.	I.M.	F.C.	F.S.I.	S	PHOS	REMARKS
348	348.5		181110	0.5	39.2							
348.5	349		181111	0.5	76							
349	349.5		181112	0.5	83.2							
		Compo 361			25.8	20.43	0.53		2.5	0.53		
392	392.5		181113	0.5	24.8							
392.5	393	362	181114	0.5	19							RoMax 061-05
393	393.5		181115	0.5	23.1							
393.5	394		181116	0.5	24.9							
394	394.5		181117	0.5	51.3							
		Compo 362			24.9	22.82	0.37		6	0.67		

ROTARY DRILL HOLE SAMPLING RECORD										ELKVALLEY COAL CORP.		
HOLE NUMBER:		RH 2799		AREA:		CASTLE		FORDING RIVER OPERATIONS				
FROM	TO	DESCRIPTION	SAMPLE NUMBER	WIDTH	ASH	V.C.M.	I.M.	F.C.	F.S.I.	S	PHOS	REMARKS
4.5	5		179426	0.5	46.7							
5	5.5		179427	0.5	18.3							
5.5	6		179428	0.5	27.3							Ro Max -05-025
6	6.5	300	179429	0.5	26							
6.5	7		179430	0.5	25.6							
7	7.5		179431	0.5	25.5							
7.5	8		179432	0.5	30.1							
8	8.5		179433	0.5	35.6							
8.5	9		179434	0.5	30.9							
9	9.5		179435	0.5	47.3							
		Compo 300			27.4	19.57	0.44		1.5	0.74		
104	104.5		179436	0.5	49							
104.5	105		179437	0.5	58.9							
105	105.5		179438	0.5	89.2							
107	107.5		179439	0.5	62.7							
107.5	108		179440	0.5	63.4							
108	108.5		179441	0.5	62							
108.5	109		179442	0.5	54.4							
109	109.5		179443	0.5	70.3							
109.5	110		179444	0.5	67.8							
110	110.5		179445	0.5	33.4							
110.5	111		179446	0.5	71.3							
111	111.5		179447	0.5	76.4							
111.5	112		179448	0.5	81.4							
112	112.5		179449	0.5	78.4							
116.5	117		179450	0.5	79.4							
118.5	119	301	177451	0.5	16.2							
119	119.5		177452	0.5	25.2							

ROTARY DRILL HOLE SAMPLING RECORD										ELKVALLEY COAL CORP.		
HOLE NUMBER:		RH 2799		AREA:		CASTLE		FORDING RIVER OPERATIONS				
FROM	TO	DESCRIPTION	SAMPLE NUMBER	WIDTH	ASH	V.C.M.	I.M.	F.C.	F.S.I.	S	PHOS	REMARKS
119.5	120		177453	0.5	23.2							
120	120.5		177454	0.5	40.5							
120.5	121		177455	0.5	27.4							Ro Max-05-026
121	121.5		177456	0.5	14							
121.5	122		177457	0.5	12.4							
122	122.5		177458	0.5	25							
122.5	123		177459	0.5	14							
123	123.5		177460	0.5	26.7							
123.5	124		177461	0.5	68.8							
		Compo 301			22.8	19.16	0.36		3	0.45		
144	144.5		177462	0.5	20.9							
144.5	145		177463	0.5	52.2							
145	145.5		177464	0.5	59.2							
145.5	146		177465	0.5	62.4							
146	146.5		177466	0.5	84.3							
146.5	147	302	177467	0.5	36.8							
147	147.5		177468	0.5	39							
147.5	148		177469	0.5	69.6							
		Compo 302			40.4	15.54	0.49		1	0.41		
162	162.5		177470	0.5	74							
162.5	163		177471	0.5	45.5							
163	163.5		177472	0.5	14.7							
163.5	164		177473	0.5	10.2							
164	164.5		177474	0.5	9.3							
164.5	165	303	177475	0.5	26.4							Ro Max-05-027
165	165.5		177151	0.5	14.9							
165.5	166		177152	0.5	21.9							
166	166.5		177153	0.5	15.1							
166.5	167		177154	0.5	16.2							
167	167.5		177155	0.5	22.1							
167.5	168		177156	0.5	33.1							

ROTARY DRILL HOLE SAMPLING RECORD											ELKVALLEY COAL CORP.	
HOLE NUMBER:		RH 2799		AREA:		CASTLE				FORDING RIVER OPERATIONS		
FROM	TO	DESCRIPTION	SAMPLE NUMBER	WIDTH	ASH	V.C.M.	I.M.	F.C.	F.S.I.	S	PHOS	REMARKS
168	168.5		177157	0.5	80.1							
168.5	169		177158	0.5	85.4							
169	169.5		177159	0.5	79.2							
169.5	170		177160	0.5	56.1							
170	170.5		177161	0.5	87.6							
170.5	171		177162	0.5	62.5							
171	171.5		177163	0.5	90.3							
		Compo 303			18.2	18.65	0.42		1	0.36		
250	250.5	304	177164	0.5	11.3							
250.5	251		177165	0.5	20.4							
251	251.5		177166	0.5	72.2							
		Compo 304			14.8	19.2	0.39		3.5	0.69		
268	268.5		177167	0.5	19.3							
268.5	269		177168	0.5	14.9							
269	269.5		177169	0.5	14.1							
269.5	270		177170	0.5	44.5							
270	270.5	305	177171	0.5	34.4							Ro Max-05-028
270.5	271		177172	0.5	18.5							
271	271.5		177173	0.5	19.9							
271.5	272		177174	0.5	10.4							
272	272.5		177175	0.5	11.9							
272.5	273		177176	0.5	11.2							
273	273.5		177177	0.5	12.9							
273.5	274		177178	0.5	21.3							
274	274.5		177179	0.5	17.1							
274.5	275		177180	0.5	29.1							
275	275.5		177181	0.5	32.9							
275.5	276		177182	0.5	22.2							
276	276.5		177183	0.5	45.5							
276.5	277		177184	0.5	78.6							
277	277.5		177185	0.5	42.3							

ROTARY DRILL HOLE SAMPLING RECORD

ELKVALLEY COAL CORP.

HOLE NUMBER:		RH 2799		AREA:	CASTLE		FORDING RIVER OPERATIONS					
FROM	TO	DESCRIPTION	SAMPLE NUMBER	WIDTH	ASH	V.C.M.	I.M.	F.C.	F.S.I.	S	PHOS	REMARKS
277.5	278		177186	0.5	68.6							
278	278.5		177187	0.5	58.7							
278.5	279		177188	0.5	58.1							
279	279.5		177189	0.5	14.3							
279.5	280	306	177190	0.5	28.5							
280	280.5		177191	0.5	20.9							
280.5	281		177192	0.5	23.3							
281	281.5		177193	0.5	81.9							
281.5	282		177194	0.5	47.6							
282	282.5		177195	0.5	57.4							
282.5	283		177196	0.5	84.5							
		Compo 305			20.5	18.62	0.39		2.5	0.39		
		Compo 306			21.7	17.6	0.33		1.5	0.41		

ROTARY DRILL HOLE SAMPLING RECORD										ELKVALLEY COAL CORP.		
HOLE NUMBER:		2798		AREA:	BARE					FORDING RIVER OPERATIONS		
FROM	TO	DESCRIPTION	SAMPLE NUMBER	WIDTH	ASH	V.C.M.	I.M.	F.C.	F.S.I.	S	PHOS	REMARKS
46.5	47		181176	0.5	66.4							
47	47.5		181177	0.5	86.7							
143	143.5	339	181178	0.5	30.6							
143.5	144		181179	0.5	33.2							
		Compo 339			32.1	25.06	0.59		7	0.45		
148	148.5		181180	0.5	50.3							
148.5	149		181181	0.5	51.9							
149	149.5		181182	0.5	45.7							
149.5	150		181183	0.5	54.3							
166	166.5		181184	0.5	66.9							
166.5	167		181185	0.5	70.1							
167	167.5		181186	0.5	86.6							
171	171.5		181187	0.5	13.4							
171.5	172		181188	0.5	66.2							
172	172.5		181189	0.5	84.7							
172.5	173		181190	0.5	80.8							
173	173.5		181191	0.5	84.6							
181.5	182		181192	0.5	55.1							
182	182.5		181193	0.5	79.4							
182.5	183		181194	0.5	66.2							
183	183.5		181195	0.5	48.9							
183.5	184		181196	0.5	52.2							
184	184.5		181197	0.5	31.1							
184.5	185		181198	0.5	67.5							
213	213.5		181199	0.5	81.5							
213.5	214		181200	0.5	55.2							

ROTARY DRILL HOLE SAMPLING RECORD										ELKVALLEY COAL CORP.		
HOLE NUMBER:		2798		AREA:		BARE				FORDING RIVER OPERATIONS		
FROM	TO	DESCRIPTION	SAMPLE NUMBER	WIDTH	ASH	V.C.M.	I.M.	F.C.	F.S.I.	S	PHOS	REMARKS
257.5	258	341	181226	0.5	41.7							
258	258.5		181227	0.5	84.8							
		Compo 341			37.7	21.16	0.64		4.5	0.63		
259.5	260		181228	0.5	78.8							
260	260.5		181229	0.5	83.7							
267	267.5	342	181230	0.5	16.2							
267.5	268		181231	0.5	13.6							
268	268.5		181232	0.5	75.6							
268.5	269		181233	0.5	92.8							
		Compo 342			15.8	25.05	0.52		6	0.67		
279	279.5		181234	0.5	18.2							
279.5	280	343	181235	0.5	30.5							RoMax 051-05
280	280.5		181236	0.5	42.4							
280.5	281		181237	0.5	26.1							
281	281.5		181238	0.5	23.6							
281.5	282		181239	0.5	65.2							
282	282.5		181240	0.5	85.2							
282.5	283		181241	0.5	84.5							
		Compo 343			30.1	23.44	0.58		5.5	0.46		
299	299.5		181242	0.5	42.3							
299.5	300		181243	0.5	59.1							
300	300.5	344	181244	0.5	27.7							RoMax 052-05
300.5	301		181245	0.5	35.3							
301	301.5		181246	0.5	18.5							
301.5	302		181247	0.5	32.6							
302	302.5		181248	0.5	59.9							
302.5	303		181249	0.5	79.6							
303	303.5		181250	0.5	92.4							
		Compo 344			37.4	21.8	0.58		4.5	0.49		
323	323.5		183751	0.5	61.6							

ROTARY DRILL HOLE SAMPLING RECORD										ELKVALLEY COAL CORP.		
HOLE NUMBER:		2798		AREA:		BARE				FORDING RIVER OPERATIONS		
FROM	TO	DESCRIPTION	SAMPLE NUMBER	WIDTH	ASH	V.C.M.	I.M.	F.C.	F.S.I.	S	PHOS	REMARKS
323.5	324		183752	0.5	84.6							
324	324.5		183753	0.5	7.04							
336.5	337		183754	0.5	84.1							
337	337.5		183755	0.5	86.5							
337.5	338		183756	0.5	80.2							
338	338.5		183757	0.5	78.3							
340.5	341		183758	0.5	65.2							
341	341.5		183759	0.5	85.7							
341.5	342		183760	0.5	77.5							
342	342.5		183761	0.5	87							
350	350.5		183762	0.5	87.3							
350.5	351		183763	0.5	90.7							
352.5	353	345	183764	0.5	37.6							
353	353.5		183765	0.5	48.4							
353.5	354		183766	0.5	19.8							
354	354.5		183767	0.5	75.4							
354.5	355		183768	0.5	85.8							
355	355.5		183769	0.5	77.3							
355.5	356		183770	0.5	87.5							
356	356.5		183771	0.5	87.1							
356.5	357		183772	0.5	89.8							
		Compo 345			33.6	21.07	0.61		7	0.68		
357.5	358		183773	0.5	82.5							
358	358.5		183774	0.5	84.6							
358.5	359		183775	0.5	86.9							
369.5	370		183776	0.5	54.2							

ROTARY DRILL HOLE SAMPLING RECORD										ELKVALLEY COAL CORP.		
HOLE NUMBER:		2798		AREA:		BARE				FORDING RIVER OPERATIONS		
FROM	TO	DESCRIPTION	SAMPLE NUMBER	WIDTH	ASH	V.C.M.	I.M.	F.C.	F.S.I.	S	PHOS	REMARKS
370	370.5		183777	0.5	76							
370.5	371		183778	0.5	83.1							
372.5	373		183779	0.5	58.2							
373	373.5		183780	0.5	70.9							
373.5	374		183781	0.5	84.9							
375.5	376		183782	0.5	80.2							
376	376.5		183783	0.5	78.3							
376.5	377		183784	0.5	82.1							
393	393.5		183785	0.5	56.9							
393.5	394		183786	0.5	52.4							
394	394.5		183787	0.5	29.3							
394.5	395	346	183788	0.5	36.5							
395	395.5		183789	0.5	45.8							RoMax 053-05
395.5	396		183790	0.5	50							
396	396.5		183791	0.5	38.6							
396.5	397		183792	0.5	77.4							
397	397.5		183793	0.5	80.5							
397.5	398		183794	0.5	72.6							
398	398.5		183795	0.5	75.3							
398.5	399		183796	0.5	69.3							
399	399.5		183797	0.5	80.3							
		Compo 346			40.6	17.93	0.5		2	0.49		
411.5	412		183798	0.5	74.4							
412	412.5		183799	0.5	75.8							
412.5	413		183800	0.5	66.8							
413	413.5		183801	0.5	59.4							
413.5	414		183802	0.5	75.1							
414	414.5		183803	0.5	68.9							

ROTARY DRILL HOLE SAMPLING RECORD										ELKVALLEY COAL CORP.		
HOLE NUMBER:		2798	AREA:		BARE					FORDING RIVER OPERATIONS		
FROM	TO	DESCRIPTION	SAMPLE NUMBER	WIDTH	ASH	V.C.M.	I.M.	F.C.	F.S.I.	S	PHOS	REMARKS
414.5	415		183804	0.5	74.3							
415	415.5		183805	0.5	75.1							
415.5	416		183806	0.5	63.6							
416	416.5		183807	0.5	72.4							
416.5	417		183808	0.5	84.7							
428	428.5		183809	0.5	81							
428.5	429		183810	0.5	75.8							
429	429.5		183811	0.5	76.6							
429.5	430		183812	0.5	91.3							
430	430.5		183813	0.5	91.2							
430.5	431		183814	0.5	83.2							
433	433.5		183815	0.5	86.1							
433.5	434		183816	0.5	90.3							
434	434.5		183817	0.5	90.4							
442.5	443		183818	0.5	81.5							
443	443.5		183819	0.5	88.8							
443.5	444		183820	0.5	82							
444	444.5		183821	0.5	75.8							
444.5	445		183822	0.5	68.8							
445	445.5		183823	0.5	66.7							
445.5	446		183824	0.5	78.1							
446	446.5		183825	0.5	80.7							
446.5	447		183826	0.5	75.7							
447	447.5		183827	0.5	62.4							
447.5	448		183828	0.5	35							
448	448.5		183829	0.5	74.6							
449.5	450		183830	0.5	77.6							

ROTARY DRILL HOLE SAMPLING RECORD										ELKVALLEY COAL CORP.			
HOLE NUMBER:		2797	AREA:		BARE						FORDING RIVER OPERATIONS		
FROM	TO	DESCRIPTION	SAMPLE NUMBER	WIDTH	ASH	V.C.M.	I.M.	F.C.	F.S.I.	S	PHOS	REMARKS	
52	52.5		182426	0.5	41.9								
52.5	53		182427	0.5	50.6								
53	53.5		182428	0.5	34.1								
58	58.5		182429	0.5	31.1								
58.5	59		182430	0.5	51.2								
59	59.5		182431	0.5	70.8								
59.5	60		182432	0.5	45.5								
60	60.5		182433	0.5	46.6								
60.5	61		182434	0.5	55.1								
61	61.5		182435	0.5	76.1								
102.5	103		182436	0.5	10.8								
103	103.5		182437	0.5	9.7								
103.5	104		182438	0.5	11.1								
104	104.5		182439	0.5	9.9								
104.5	105	331	182440	0.5	9.6							RoMax 044-05	
105	105.5		182441	0.5	4.5								
105.5	106		182442	0.5	6.3								
106	106.5		182443	0.5	7.4								
106.5	107		182444	0.5	6.5								
107	107.5		182445	0.5	13.8								
107.5	108		182446	0.5	35.7								
108	108.5		182447	0.5	55.9								
108.5	109		182448	0.5	46.3								
109	109.5		182449	0.5	46.6								
		Compo331			11	27.06	0.56		7.5	0.56			
129	129.5		182450	0.5	18.5								
129.5	130		182376	0.5	67.6								
130	130.5		182377	0.5	90.6								

ROTARY DRILL HOLE SAMPLING RECORD										ELKVALLEY COAL CORP.		
HOLE NUMBER:		2797		AREA:		BARE				FORDING RIVER OPERATIONS		
FROM	TO	DESCRIPTION	SAMPLE NUMBER	WIDTH	ASH	V.C.M.	I.M.	F.C.	F.S.I.	S	PHOS	REMARKS
139	139.5		182378	0.5	10.1							
139.5	140		182379	0.5	24.4							
140	140.5		182380	0.5	36.2							
140.5	141		182381	0.5	68.6							RoMax 045-05
141	141.5	332	182382	0.5	19.8							
141.5	142		182383	0.5	50							
142	142.5		182384	0.5	40.3							
142.5	143		182385	0.5	16.6							
143	143.5		182386	0.5	15							
143.5	144		182387	0.5	13.4							
144	144.5		182388	0.5	29.2							
144.5	145		182389	0.5	69.4							
145	145.5		182390	0.5	87.4							
		Compo 332			30.3	22.5	0.63		7.5	0.57		
161	161.5		182391	0.5	23.3							
161.5	162		182392	0.5	16.4							
162	162.5	333	182393	0.5	60.6							RoMax 046-05
162.5	163		182394	0.5	29.6							
163	163.5		182395	0.5	18							
163.5	164		182396	0.5	23.1							
164	164.5		182397	0.5	14.6							
164.5	165		182398	0.5	29							
165	165.5		182399	0.5	66.5							
165.5	166		182400	0.5	90.2							
		Compo 333			27.7	22.76	0.56		4.5	0.54		
202	202.5		182401	0.5	6							
202.5	203	334	182402	0.5	20.2							RoMax 047-05
203	203.5		182403	0.5	10							
203.5	204		182404	0.5	28.6							
		Compo 334			17.9	26.53	0.5		8.5	0.81		
252	252.5		182405	0.5	64.4							

ROTARY DRILL HOLE SAMPLING RECORD

ELKVALLEY COAL CORP.

HOLE NUMBER:		2797		AREA:	BARE				FORDING RIVER OPERATIONS			
FROM	TO	DESCRIPTION	SAMPLE NUMBER	WIDTH	ASH	V.C.M.	I.M.	F.C.	F.S.I.	S	PHOS	REMARKS
252.5	253		182406	0.5	87.9							
253	253.5		182407	0.5	60.8							
253.5	254		182408	0.5	89.4							
256	256.5	335	182409	0.5	45.8							
256.5	257		182410	0.5	23.7							
257	257.5		182411	0.5	82.3							
Compo 335					35.3	20.73	0.52		8	0.82		
261.5	262		182412	0.5	65.6							
262	262.5		182413	0.5	77.8							
262.5	263		182414	0.5	13							
263	263.5		182415	0.5	84.8							
263.5	264		182416	0.5	56.1							
264	264.5		182417	0.5	39.1							
264.5	265	336	182418	0.5	13.2							RoMax 048-05
265	265.5		182419	0.5	34.2							
265.5	266		182420	0.5	24.2							
266	266.5		182421	0.5	55							
266.5	267		182422	0.5	87.1							
267	267.5		182423	0.5	92.4							
Compo 336					27.5	23.97	0.53		6.5	0.78		
277.5	278		182424	0.5	71.9							
278	278.5		182425	0.5	90							
278.5	279		181126	0.5	66.7							
279	279.5		181127	0.5	83.9							
279.5	280		181128	0.5	81.3							
280	280.5		181129	0.5	88.7							
295	295.5		181130	0.5	84.1							
295.5	296		181131	0.5	87.4							

ROTARY DRILL HOLE SAMPLING RECORD

ELKVALLEY COAL CORP.

HOLE NUMBER: 2797		FORDING RIVER OPERATIONS											
FROM	TO	DESCRIPTION	SAMPLE NUMBER	AREA: BARE	WIDTH	ASH	V.C.M.	I.M.	F.C.	F.S.I.	S	PHOS	REMARKS
299	299.5		181132		0.5	79.6							
299.5	300		181133		0.5	82							
300	300.5		181134		0.5	81.9							
300.5	301		181135		0.5	8.18							
311	311.5		181136		0.5	59.7							
311.5	312		181137		0.5	72.2							
315	315.5		181138		0.5	20.6							
315.5	316	337	181139		0.5	13.3							
316	316.5		181140		0.5	14.9							RoMax 049-05
316.5	317		181141		0.5	28.3							
317	317.5		181142		0.5	22.3							
317.5	318		181143		0.5	68.1							
		Compo 337				19.8	23.15	0.58		7.5	0.76		
364	364.5		181144		0.5	80.4							
364.5	365		181145		0.5	84.8							
365.5	366		181146		0.5	78.6							
366	366.5		181147		0.5	82.3							
370	370.5		181148		0.5	46.3							
370.5	371		181149		0.5	58.7							
371	371.5		181150		0.5	51.3							
371.5	372		181151		0.5	71.2							
372	372.5		181152		0.5	92.3							
372.5	373		181153		0.5	84.1							
373	373.5		181154		0.5	90.7							
373.5	374		181155		0.5	90.3							
374	374.5		181156		0.5	72.3							
374.5	375		181157		0.5	71.8							

ROTARY DRILL HOLE SAMPLING RECORD										ELKVALLEY COAL CORP.		
HOLE NUMBER:		2797		AREA:		BARE				FORDING RIVER OPERATIONS		
FROM	TO	DESCRIPTION	SAMPLE NUMBER	WIDTH	ASH	V.C.M.	I.M.	F.C.	F.S.I.	S	PHOS	REMARKS
375	375.5		181158	0.5	57.1							
375.5	376		181159	0.5	78.7							
376	376.5		181160	0.5	81.4							
378	378.5		181161	0.5	74.4							
378.5	379		181162	0.5	25.1							
379	379.5		181163	0.5	72.2							
379.5	380		181164	0.5	89.1							
387	387.5		181165	0.5	31.1							
387.5	388		181166	0.5	90.1							
388	388.5		181167	0.5	78.1							
388.5	389		181168	0.5	61.1							
391.5	392		181169	0.5	83.9							
389	389.5		181170	0.5	62.7							
392.5	393		181171	0.5	66.6							
393	393.5	338	181172	0.5	40.8							
393.5	394		181173	0.5	42.5							
394	394.5		181174	0.5	53.3							
394.5	395		181175	0.5	82.1							
		Compo 338			44.2	23.88	0.38		1	0.32		

ROTARY DRILL HOLE SAMPLING RECORD											ELKVALLEY COAL CORP.	
HOLE NUMBER:		RH 2796			AREA:		CASTLE		FORDING RIVER OPERATIONS			
FROM	TO	DESCRIPTION	SAMPLE NUMBER	WIDTH	ASH	V.C.M.	I.M.	F.C.	F.S.I.	S	PHOS	REMARKS
23	23.5		177226	0.5	16.2							
23.5	24	274	177227	0.5	22.6							
24	24.5		177228	0.5	29							Ro max
24.5	25		177229	0.5	23.3							RO-05-020
25	25.5		177230	0.5	14.4							
25.5	26		177231	0.5	14.1							
26	26.5		177232	0.5	31.2							
26.5	27		177233	0.5	17.7							
27	27.5		177234	0.5	31.8							
27.5	28		177235	0.5	37.9							
28	28.5		177236	0.5	70.5							
		Compo 274			24.2	19.88	0.42		2.5	0.51		
52.5	53		177237	0.5	34.4							
53	53.5		177238	0.5	26.7							
53.5	54	275	177239	0.5	18.8							
54	54.5		177240	0.5	12.1							Ro max
54.5	55		177241	0.5	17.1							RO-05-021
55	55.5		177242	0.5	39.3							
55.5	56		177243	0.5	16.5							
56	56.5		177244	0.5	27.6							
56.5	57		177245	0.5	86.3							
		Compo 275			25.5	18.19	0.45		2.5	0.53		
76.5	77		177246	0.5	13.6							
77	77.5		177247	0.5	78.8							
77.5	78		177248	0.5	83.3							
78	78.5		177249	0.5	50.4							
78.5	79		177250	0.5	21.1							
79	79.5	276	177201	0.5	14.5							
79.5	80		177202	0.5	12.5							
80	80.5		177203	0.5	19.9							
80.5	81		177204	0.5	18.9							

ROTARY DRILL HOLE SAMPLING RECORD										ELKVALLEY COAL CORP.		
HOLE NUMBER:		RH 2796		AREA:		CASTLE		FORDING RIVER OPERATIONS				
FROM	TO	DESCRIPTION	SAMPLE NUMBER	WIDTH	ASH	V.C.M.	I.M.	F.C.	F.S.I.	S	PHOS	REMARKS
144.5	145		177255	0.5	22.3							
145	145.5		177256	0.5	67.8							
145.5	146		177257	0.5	80.3							
159	159.5		177258	0.5	11							
159.5	160		177259	0.5	14							Ro max
160	160.5	277	177260	0.5	16.7							RO-05-023
160.5	161		177261	0.5	25.5							
161	161.5		177262	0.5	41.5							
161.5	162		177263	0.5	25.5							
162	162.5		177264	0.5	61.5							
162.5	163		177265	0.5	58.8							
163	163.5		177266	0.5	53.8							
163.5	164		177267	0.5	62.9							
164	164.5		177268	0.5	61.4							
164.5	165		177269	0.5	41.4							
165	165.5		177270	0.5	79.2							
165.5	166		177271	0.5	79							
166	166.5		177272	0.5	65.8							
166.5	167		177273	0.5	67.8							
		Compo 277			21.7	18.82	0.48		2	0.36		
199.5	200		177274	0.5	10.1							
200	200.5	278	177275	0.5	20							Ro max
200.5	201		177276	0.5	41.3							RO-05-024
		Compo 278			21.2	19.45	0.4		5	1.09		
203.5	204		177277	0.5	66							
204	204.5	279	177278	0.5	44.8							
204.5	205		177279	0.5	22							
205	205.5		177280	0.5	61.2							
		Compo 279			34.7	18.96	0.49		4	0.48		
206	206.3		177281	0.3	66.1							

ROTARY DRILL HOLE SAMPLING RECORD										ELKVALLEY COAL CORP.		
HOLE NUMBER:		RH 2796		AREA:		CASTLE				FORDING RIVER OPERATIONS		
FROM	TO	DESCRIPTION	SAMPLE NUMBER	WIDTH	ASH	V.C.M.	I.M.	F.C.	F.S.I.	S	PHOS	REMARKS
216.7	217		177282	0.3	54.8							
217	217.5		177283	0.5	61.4							
217.5	218		177284	0.5	44.5							
218	218.5		177285	0.5	55.8							
230	230.5	280	177286	0.5	44.1							
230.5	231		177287	0.5	43.6							
231	231.5		177288	0.5	29.4							
231.5	232		177289	0.5	51.6							
232	232.5		177290	0.5	88.2							
232.5	233		177291	0.5	87.5							
		Compo 280			42.5	14.64	0.47		1	0.51		
235.5	236		177292	0.5	65.8							
236	236.5		177293	0.5	52.1							
236.5	237		177294	0.5	48.3							
237	237.5		177295	0.5	47.4							
237.5	238		177296	0.5	76.4							
238	238.5		177297	0.5	73.5							
239	239.5		177298	0.5	65.1							
239.5	240		177299	0.5	74.9							
240	240.5		177300	0.5	53.5							
240.5	241		177301	0.5	63.2							
241	241.5		177302	0.5	74							
241.5	242	281	177303	0.5	42.4							
242	242.5		177304	0.5	34.9							
242.5	243		177305	0.5	67.6							
		Compo 281			39.4	15.27	0.4		4.5	0.45		

ROTARY DRILL HOLE SAMPLING RECORD										ELKVALLEY COAL CORP.		
HOLE NUMBER:		2824		AREA:		TURNBULL		FORDING RIVER OPERATIONS				
FROM	TO	DESCRIPTION	SAMPLE NUMBER	WIDTH	ASH	V.C.M.	I.M.	F.C.	F.S.I.	S	PHOS	REMARKS
31.5	32	409	181751	0.5	9.9							
32	32.5		181752	0.5	10							
32.5	33		181753	0.5	6.9							Ro. Max 05-082
33	33.5		181754	0.5	4.7							
33.5	34		181755	0.5	14							
34	34.5		181756	0.5	40.8							
34.5	35		181757	0.5	80.8							
		Compo 409			14.3	28.4	0.76		4.5	0.7		
39.5	40		181758	0.5	50							
40	40.5	410	181759	0.5	17.9							
40.5	41		181760	0.5	14.1							
41	41.5		181761	0.5	7.4							
41.5	42		181762	0.5	67.3							
		Compo 410			12.7	28.22	0.97		2	0.52		
86	86.5		181763	0.5	88.2							
86.5	87		181764	0.5	80.9							
87	87.5		181765	0.5	59							
87.5	88		181766	0.5	67.5							
88	88.5		181767	0.5	75.3							
92.5	93		181768	0.5	81.4							
93	93.5		181769	0.5	83.4							
93.5	94		181770	0.5	79.5							
94	94.5		181771	0.5	84.8							
98.5	99		181772	0.5	58.9							
99	99.5		181773	0.5	36.5							
99.5	100		181774	0.5	66.9							
100	100.5		181726	0.5	73.1							
100.5	101		181727	0.5	79.1							
101	101.5		181728	0.5	64.1							

ROTARY DRILL HOLE SAMPLING RECORD										ELKVALLEY COAL CORP.		
HOLE NUMBER:		2824		AREA:		TURNBULL		FORDING RIVER OPERATIONS				
FROM	TO	DESCRIPTION	SAMPLE NUMBER	WIDTH	ASH	V.C.M.	I.M.	F.C.	F.S.I.	S	PHOS	REMARKS
101.5	102		181729	0.5	78.8							
102	102.5		181730	0.5	84.6							
121.5	122		181731	0.5	82.3							
122	122.5	411	181732	0.5	34.8							
122.5	123		181733	0.5	12.5							
123	123.5		181734	0.5	15.4							
123.5	124		181735	0.5	65.2							
124	124.5		181736	0.5	10.7							Ro. Max 05-083
124.5	125		181737	0.5	9.4							
125	125.5		181738	0.5	18.8							
125.5	126		181739	0.5	5.9							
126	126.5		181740	0.5	6.2							
126.5	127		181741	0.5	15.4							
127	127.5		181742	0.5	5.2							
127.5	128		181743	0.5	49							
128	128.5		181744	0.5	46.1							
128.5	129		181745	0.5	69.4							
129	129.5		181746	0.5	87.1							
		Compo 411			19.2	26.4	0.66		7	0.71		
187	187.5	412	181747	0.5	22.1							
187.5	188		181748	0.5	18							
188	188.5		181749	0.5	6.9							
188.5	189		181750	0.5	13.1							
189	189.5		181851	0.5	12.7							
189.5	190		181852	0.5	38.4							Ro. Max 05-084
190	190.5		181853	0.5	82.1							
190.5	191		181854	0.5	25.1							
191	191.5		181855	0.5	40.4							
191.5	192		181856	0.5	76							
192	192.5		181857	0.5	20.9							

ROTARY DRILL HOLE SAMPLING RECORD										ELKVALLEY COAL CORP.		
HOLE NUMBER:		2824		AREA:		TURNBULL		FORDING RIVER OPERATIONS				
FROM	TO	DESCRIPTION	SAMPLE NUMBER	WIDTH	ASH	V.C.M.	I.M.	F.C.	F.S.I.	S	PHOS	REMARKS
192.5	193		181858	0.5	23.7							
193	193.5		181859	0.5	8.2							
193.5	194		181860	0.5	11.2							
194	194.5		181861	0.5	11							
194.5	195		181862	0.5	15							
195	195.5		181863	0.5	7.8							
195.5	196		181864	0.5	18.2							
196	196.5		181865	0.5	19.8							
196.5	197		181866	0.5	71.5							
		Compo 412			29.2	22.75	0.58		7	0.6		
198.5	199	413	181867	0.5	37.9							
199	199.5		181868	0.5	38.5							
199.5	200		181869	0.5	43.1							
		Compo 413			42.7	18.88	0.61		3.5	0.81		
201.5	202		181870	0.5	34.1							
202	202.5		181871	0.5	45.5							
202.5	203		181872	0.5	66.9							
203.5	204	414	181873	0.5	28							
204	204.5		181874	0.5	35.7							
		Compo 414			32.6	22.13	0.62		7.5	1.58		
216.5	217	415	181875	0.5	12.6							
217	217.5		181876	0.5	7.9							Ro. Max 05-085
217.5	218		181877	0.5	11.1							
218	218.5		181878	0.5	61.4							
218.5	219		181879	0.5	69.2							
219	219.5		181880	0.5	79.8							
		Compo 415			12.2	26.36	0.54		8	0.73		
220	220.5	416	181881	0.5	16.3							
220.5	221		181882	0.5	40.2							
221	221.5		181883	0.5	59.8							

ROTARY DRILL HOLE SAMPLING RECORD

ELKVALLEY COAL CORP.

HOLE NUMBER:		2824		AREA:		TURNBULL		FORDING RIVER OPERATIONS				
FROM	TO	DESCRIPTION	SAMPLE NUMBER	WIDTH	ASH	V.C.M.	I.M.	F.C.	F.S.I.	S	PHOS	REMARKS
221.5	222		181884	0.5	66.4							
		Compo 418			29.5	22.36	0.55		8.5	0.55		
229.5	230		181885	0.5	10.2							
230	230.5		181886	0.5	6.3							
230.5	231		181887	0.5	64.1							
231	231.5		181888	0.5	86.6							
259	259.5	417	181889	0.5	14.5							
259.5	260		181890	0.5	5.4							
260	260.5		181891	0.5	5.2							Ro. Max 05-086
260.5	261		181892	0.5	6.6							
261	261.5		181893	0.5	7.1							
261.5	262		181894	0.5	24.2							
262	262.5		181895	0.5	10.5							
262.5	263		181896	0.5	14.5							
263	263.5		181897	0.5	64							
263.5	264		181898	0.5	85.9							
		Compo 417			10.8	24.73	0.59		7.5	0.47		
277	277.5		181899	0.5	68.6							
277.5	278		181901	0.5	89							
299.3	299.5	418	181902	0.2	35.9							Ro. Max 05-087
299.5	300		181903	0.5	12.7							
300	300.5		181904	0.5	13.3							
300.5	301		181905	0.5	18.9							
301	301.5		181906	0.5	54.4							
301.5	302		181907	0.5	69							
302	302.5		181908	0.5	75.4							
302.5	303		181909	0.5	48.7							
303	303.5		181910	0.5	37.2							
303.5	304		181911	0.5	73.4							

ROTARY DRILL HOLE SAMPLING RECORD								ELKVALLEY COAL CORP.				
HOLE NUMBER:		2824	AREA:	TURNBULL				FORDING RIVER OPERATIONS				
FROM	TO	DESCRIPTION	SAMPLE NUMBER	WIDTH	ASH	V.C.M.	I.M.	F.C.	F.S.I.	S	PHOS	REMARKS
304	304.5		181912	0.5	55.4							
304.5	305		181913	0.5	69.9							
305	305.5		181914	0.5	82.1							
		Compo 418			20.7	21.22	0.52		3.5	0.64		
309.5	310		181915	0.5	49.3							
310	310.5		181916	0.5	40.8							
310.5	311		181917	0.5	65.8							
311	311.5		181918	0.5	38.5							
311.5	312		181919	0.5	66.7							
312	312.5		181920	0.5	60.7							
312.5	313		181921	0.5	62.8							
314	314.5		181922	0.5	58							
314.5	315		181923	0.5	70.6							

ROTARY DRILL HOLE SAMPLING RECORD										ELKVALLEY COAL CORP.		
HOLE NUMBER:		2825		AREA:		TURNBULL		FORDING RIVER OPERATIONS				
FROM	TO	DESCRIPTION	SAMPLE NUMBER	WIDTH	ASH	V.C.M.	I.M.	F.C.	F.S.I.	S	PHOS	REMARKS
31.5	32		182026	0.5	56							
32	32.5		182027	0.5	38.9							
32.5	33		182028	0.5	19.9							
33	33.5		182029	0.5	76							
		COMPO 162			30.6	21.96	2.19		0	0.73		
63.5	64		182030	0.5	18.7							
64	64.5		182031	0.5	29							
64.5	65		182032	0.5	71.1							
		COMPO 163			24.8	24.62	1.64		1	1.03		
74	74.5		182033	0.5	62.1							
74.5	75		182034	0.5	53.1							
75	75.5		182035	0.5	47.8							
75.5	76		182036	0.5	21.6							
76	76.5		182037	0.5	9.9							
76.5	77		182038	0.5	62.7							
77	77.5		182039	0.5	22.8							ROMAX PG-05-001
77.5	78		182040	0.5	21.6							
78	78.5		182041	0.5	8.6							
78.5	79		182042	0.5	8.9							
79	79.5		182043	0.5	6.8							
79.5	80		182044	0.5	21.5							
80	80.5		182045	0.5	71.6							
80.5	81		182046	0.5	77.1							
		COMPO 164			20.9	26.16	1		7.5	0.84		
81.5	82		182047	0.5	41.5							
82	82.5		182048	0.5	51.7							
82.5	83		182049	0.5	61.7							
97	97.5		182050	0.5	48.8							
97.5	98		182051	0.5	77.9							
98	98.5		182052	0.5	70.4							

ROTARY DRILL HOLE SAMPLING RECORD										ELKVALLEY COAL CORP.		
HOLE NUMBER:		2825		AREA:		TURNBULL		FORDING RIVER OPERATIONS				
FROM	TO	DESCRIPTION	SAMPLE NUMBER	WIDTH	ASH	V.C.M.	I.M.	F.C.	F.S.I.	S	PHOS	REMARKS
156	156.5		182080	0.5	13.1							
156.5	157		182081	0.5	22.8							
157	157.5		182082	0.5	83.9							
		COMPO 167			18.8	24.24	0.85		8	0.76		
164	164.5		182083	0.5	17.7							
164.5	165		182084	0.5	40.9							
165	165.5		182085	0.5	65.5							
165.5	166		182086	0.5	59.3							
		COMPO 168			25.9	23.67	0.81		7.5	0.77		
176.5	177		182087	0.5	47.4							
177	177.5		182088	0.5	50.2							
177.5	178		182089	0.5	85.1							
191.5	192		182090	0.5	53.5							
192	192.5		182091	0.5	11.5							
192.5	193		182092	0.5	14.4							
193	193.5		182093	0.5	26.2							
193.5	194		182094	0.5	5.4							
194	194.5		182095	0.5	6.6							
194.5	195		182096	0.5	6.1							ROMAX PG-05-003
195	195.5		182097	0.5	6							
195.5	196		182098	0.5	7.4							
196	196.5		182099	0.5	8.6							
196.5	197		182100	0.5	11.2							
197	197.5		182101	0.5	18.2							
197.5	198		182102	0.5	17.3							
198	198.5		182103	0.5	21.4							
198.5	199		182104	0.5	13.8							
199	199.5		182105	0.5	68.6							
199.5	200		182106	0.5	19.9							
		COMPO 169			16.2	24.02	0.9		7.5	0.53		

ROTARY DRILL HOLE SAMPLING RECORD										ELKVALLEY COAL CORP.		
HOLE NUMBER:		2825		AREA:		TURNBULL		FORDING RIVER OPERATIONS				
FROM	TO	DESCRIPTION	SAMPLE NUMBER	WIDTH	ASH	V.C.M.	I.M.	F.C.	F.S.I.	S	PHOS	REMARKS
203.5	204		182107	0.5	68.3							
234	234.5		182108	0.5	21.4							
234.5	235		182109	0.5	20.4							ROMAX PG-05-004
235	235.5		182110	0.5	15.3							
235.5	236		182111	0.5	12							
236	236.5		182112	0.5	21.1							
236.5	237		182113	0.5	38.6							
237	237.5		182114	0.5	77.1							
237.5	238		182115	0.5	58.1							
238	238.5		182116	0.5	25.2							
238.5	239		182117	0.5	36.3							
239	239.5		182118	0.5	56							
239.5	240		182119	0.5	51.8							
240	240.5		182120	0.5	61.3							
		COMPO 170			19.9	20.72	0.73		3.5	0.68		
248.5	249		182121	0.5	35.9							
249	249.5		182122	0.5	71.1							
249.5	250		182123	0.5	74.3							
		COMPO 171			31.1	20.27	0.75		7	0.67		
252	252.5		182124	0.5	43.7							
252.5	253		182125	0.5	71.5							
257.5	258		182126	0.5	72.5							
258	258.5		182127	0.5	58.1							
269	269.5		182128	0.5	74.7							
269.5	270		182129	0.5	84.4							
322.5	323		182130	0.5	63.4							
323	323.5		182131	0.5	25.4							

ROTARY DRILL HOLE SAMPLING RECORD										ELKVALLEY COAL CORP.		
HOLE NUMBER:		2825		AREA:		TURNBULL		FORDING RIVER OPERATIONS				
FROM	TO	DESCRIPTION	SAMPLE NUMBER	WIDTH	ASH	V.C.M.	I.M.	F.C.	F.S.I.	S	PHOS	REMARKS
323.5	324		182132	0.5	24.6							
324	324.5		182133	0.5	21.1							ROMAX PG-05-005
324.5	325		182134	0.5	16.6							
325	325.5		182135	0.5	17.2							
325.5	326		182136	0.5	66.9							
		COMPO 172			20.9	20.17	0.68		3.5	0.47		
333	333.5		182137	0.5	60.9							
333.5	334		182138	0.5	82.1							
334.5	335		182139	0.5	missing							
335	335.5		182140	0.5	74.2							
336	336.5		182141	0.5	62.5							
336.5	337		182142	0.5	74.4							
337	337.5		182143	0.5	71.2							
338.5	339		182144	0.5	86.1							
339	339.5		182145	0.5	85.9							
340.8	341		182146	0.2	45.5							
341	341.5		182147	0.5	38.4							
341.5	342		182148	0.5	37.2							
		COMPO 173			36.7	17.23	0.67		3	0.52		

ROTARY DRILL HOLE SAMPLING RECORD										ELKVALLEY COAL CORP.		
HOLE NUMBER:		2826		AREA:		TURNBULL		FORDING RIVER OPERATIONS				
FROM	TO	DESCRIPTION	SAMPLE NUMBER	WIDTH	ASH	V.C.M.	I.M.	F.C.	F.S.I.	S	PHOS	REMARKS
7	7.5		182151	0.5	33.8							
7.5	8		182152	0.5	44.7							
8	8.5		182153	0.5	68.4							
8.5	9	307	182154	0.5	9.9							
9	9.5		182155	0.5	7.1							Ro Max-05-029
9.5	10		182156	0.5	12.4							
10	10.5		182157	0.5	4.1							
10.5	11		182158	0.5	73.1							
11	11.5		182159	0.5	14.5							
11.5	12		182160	0.5	13.1							
12	12.5		182161	0.5	7.5							
12.5	13		182162	0.5	16.7							
13	13.5		182163	0.5	17.1							
13.5	14		182164	0.5	64.3							
14	14.5		182165	0.5	82.1							
14.5	15		182166	0.5	65.8							
		Compo 307			25	22.64	0.66		4.5	0.59		
18	18.5		182167	0.5	28.9							
18.5	19		182168	0.5	82.2							
26	26.5	308	182169	0.5	6.1							
26.5	27		182170	0.5	16.2							
27	27.5		182171	0.5	18.4							
27.5	28		182172	0.5	80.6							
		Compo 308			13.8	24.6	0.53		6	0.87		
34	34.5		182173	0.5	32.3							
34.5	35		182174	0.5	78.1							
72	72.5		182175	0.5	52.1							
72.5	73		182176	0.5	51.1							
73	73.5		182177	0.5	80.8							

ROTARY DRILL HOLE SAMPLING RECORD										ELKVALLEY COAL CORP.		
HOLE NUMBER:		2826		AREA:		TURNBULL		FORDING RIVER OPERATIONS				
FROM	TO	DESCRIPTION	SAMPLE NUMBER	WIDTH	ASH	V.C.M.	I.M.	F.C.	F.S.I.	S	PHOS	REMARKS
73.5	74		182178	0.5	72.1							
74	74.5		182179	0.5	50.6							
74.5	75	309	182180	0.5	30.1							
75	75.5		182181	0.5	26.8							
75.5	76		182182	0.5	14.8							Ro Max-05-030
76	76.5		182183	0.5	16.1							
76.5	77		182184	0.5	17.7							
77	77.5		182185	0.5	7.3							
77.5	78		182186	0.5	7.3							
78	78.5		182187	0.5	50.5							
78.5	79		182188	0.5	55.1							
79	79.5		182189	0.5	45.2							
79.5	80		182190	0.5	53.5							
80	80.5		182191	0.5	missing							
80.5	81	310	182192	0.5	35.6							
81	81.5		182193	0.5	17.4							
81.5	82		182194	0.5	19.9							
82	82.5		182195	0.5	68.1							
		Compo 309			17.9	23.99	0.49		6.5	0.41		
121	121.5		182196	0.5	23.4							
121.5	122	311	182197	0.5	21.5							
122	122.5		182198	0.5	32.1							
122.5	123		182199	0.5	62.9							
123	123.5		182200	0.5	62.3							
123.5	124		182201	0.5	44.8							
124	124.5		182202	0.5	49.4							
124.5	125		182203	0.5	71.4							
		Compo 310			24.9	20.8	0.53		3.5	0.62		
191	191.5		182204	0.5	76.1							
191.5	192		182205	0.5	60.3							
192	192.5		182206	0.5	54.1							

ROTARY DRILL HOLE SAMPLING RECORD										ELKVALLEY COAL CORP.		
HOLE NUMBER:		2826		AREA:		TURNBULL		FORDING RIVER OPERATIONS				
FROM	TO	DESCRIPTION	SAMPLE NUMBER	WIDTH	ASH	V.C.M.	I.M.	F.C.	F.S.I.	S	PHOS	REMARKS
192.5	193		182207	0.5	52.3							
193	193.5		182208	0.5	52.6							
193.5	194		182209	0.5	31.7							
194	194.5		182210	0.5	18.3							
194.5	195	312	182211	0.5	14.4							Ro Max-05-031
195	195.5		182212	0.5	13.4							Ro Max-05-032
195.5	196		182213	0.5	40.8							
196	196.5		182214	0.5	24.6							
196.5	197		182215	0.5	15.7							
197	197.5		182216	0.5	37.7							
197.5	198		182217	0.5	35.6							
198	198.5		182218	0.5	38.5							
198.5	199		182219	0.5	65.2							
199	199.5		182220	0.5	74.1							
199.5	200		182221	0.5	81.4							
		Compo 311			25.6	19.57	0.43		1.5	0.68		
214	214.5	313	182222	0.5	20.7							
214.5	215		182223	0.5	42.2							
215	215.5		182224	0.5	79.4							
		Compo 312			27.1	19.39	0.48		2	0.42		
		Compo 313			32.9	17.78	0.42		2.5	0.58		

ROTARY DRILL HOLE SAMPLING RECORD										ELKVALLEY COAL CORP.		
HOLE NUMBER:		2827		AREA:		TURNBULL		FORDING RIVER OPERATIONS				
FROM	TO	DESCRIPTION	SAMPLE NUMBER	WIDTH	ASH	V.C.M.	I.M.	F.C.	F.S.I.	S	PHOS	REMARKS
12	12.5		181501	0.5	66							
12.5	13		181502	0.5	66.6							
13	13.5		181503	0.5	42.9							
13.5	14		181504	0.5	54.3							
14	14.5		181505	0.5	63.8							
14.5	15		181506	0.5	71							
17.5	18		181507	0.5	35.4							
18	18.5		181508	0.5	77.3							
20.5	21		181509	0.5	43.1							
21	21.5		181510	0.5	47.1							
21.5	22		181511	0.5	70.5							
22	22.5		181512	0.5	63.9							
22.5	23		181513	0.5	51							
43	43.5		181514	0.5	71.5							
43.5	44		181515	0.5	26.4							
44	44.5		181516	0.5	82.1							
70.5	71		181517	0.5	26.1							
72	72.5	314	181518	0.5	11.2							
72.5	73		181519	0.5	14.4							
73	73.5		181520	0.5	16.2							
73.5	74		181521	0.5	12.7							
74	74.5		181522	0.5	24.4							
74.5	75		181523	0.5	13.2							Ro Max
75	75.5		181524	0.5	28.9							RO-05-033
75.5	76		181525	0.5	11.3							
76	76.5		181526	0.5	39.2							

ROTARY DRILL HOLE SAMPLING RECORD										ELKVALLEY COAL CORP.		
HOLE NUMBER:		2827		AREA:		TURNBULL		FORDING RIVER OPERATIONS				
FROM	TO	DESCRIPTION	SAMPLE NUMBER	WIDTH	ASH	V.C.M.	I.M.	F.C.	F.S.I.	S	PHOS	REMARKS
76.5	77		181527	0.5	28.7							
77	77.5		181528	0.5	56.4							
77.5	78		181529	0.5	83.5							
78	78.5		181530	0.5	82.1							
		Compo 314			19.8	21.28	0.76		1.5	0.39		
93.5	94		181531	0.5	63							
94	94.5		181532	0.5	54.2							
94.5	95		181533	0.5	82							
181.5	182		181534	0.5	73.9							
182	182.5		181535	0.5	87.5							
207	207.5	315	181551	0.5	11							
207.5	208		181552	0.5	14.1							Ro Max
208	208.5		181553	0.5	19.6							RO-05-034
208.5	209		181554	0.5	13.4							
209	209.5		181555	0.5	12.8							
209.5	210		181556	0.5	21.1							
210	210.5		181557	0.5	45.8							
210.5	211		181558	0.5	51.5							
		Compo 315			15.5	18.75	0.67		1	0.41		
212	212.5		181559	0.5	38.2							
212.5	213		181560	0.5	55.5							
213	213.5		181561	0.5	72.8							
215.5	216		181562	0.5	77.1							
216	216.5		181563	0.5	71							
225.5	226		181564	0.5	83.4							
241.5	242	316	181565	0.5	38.5							

ROTARY DRILL HOLE SAMPLING RECORD										ELKVALLEY COAL CORP.		
HOLE NUMBER:		2827		AREA:		TURNBULL		FORDING RIVER OPERATIONS				
FROM	TO	DESCRIPTION	SAMPLE NUMBER	WIDTH	ASH	V.C.M.	I.M.	F.C.	F.S.I.	S	PHOS	REMARKS
242	242.5		181566	0.5	38							
242.5	243		181567	0.5	26.5							Ro Max
243	243.5		181568	0.5	33.7							RO-05-035
243.5	244		181569	0.5	70.2							
244	244.5		181570	0.5	67							
244.5	245		181571	0.5	69.6							
245	245.5		181572	0.5	85.2							
245.5	246		181573	0.5	79.4							
246	246.5		181574	0.5	73.1							
246.5	247		181575	0.5	63.8							
247	247.5		181576	0.5	47.7							
247.5	248	317	181577	0.5	27.5							
248	248.5		181578	0.5	32.6							
248.5	249		181579	0.5	29.1							
249	249.5		181580	0.5	24.2							Ro Max
249.5	250		181581	0.5	25.8							RO-05-036
250	250.5		181582	0.5	46.1							
250.5	251		181583	0.5	39.7							
251	251.5		181584	0.5	68.3							
251.5	252		181585	0.5	79.4							
252	252.5		181586	0.5	86.2							
252.5	253		181587	0.5	79.9							
253	253.5		181588	0.5	dumped							
		Compo 316			35.6	16.65	0.68		1	0.37		
		Compo 317			34.2	20.98	0.58		1	0.34		

ROTARY DRILL HOLE SAMPLING RECORD										ELKVALLEY COAL CORP.		
HOLE NUMBER:		2828		AREA:		TURNBULL		FORDING RIVER OPERATIONS				
FROM	TO	DESCRIPTION	SAMPLE NUMBER	WIDTH	ASH	V.C.M.	I.M.	F.C.	F.S.I.	S	PHOS	REMARKS
30.5	31	419	183551	0.5	9.9							
31	31.5		183552	0.5	13.7							
31.5	32		183553	0.5	22.4							
32	32.5		183554	0.5	33.8							
32.5	33		183555	0.5	58.4							
33	33.5		183556	0.5	53.7							
33.5	34		183557	0.5	52.8							
34	34.5		183558	0.5	68.2							
34.5	35		183559	0.5	73.8							
35	35.5	420	183560	0.5	18.5							
35.5	36		183561	0.5	22.1							
36	36.5		183562	0.5	14.3							Ro. Max 05-088
36.5	37		183563	0.5	15.9							
37	37.5		183564	0.5	8.5							
37.5	38		183565	0.5	56.2							
38	38.5		183566	0.5	78.8							
		Compo 419			19.8	26.77	0.69		5.5	0.56		
119	119.5	421	183567	0.5	13.3							
119.5	120		183568	0.5	16.8							
120	120.5		183569	0.5	77.6							
120.5	121		183570	0.5	42.6							Ro. Max 05-089
121	121.5		183571	0.5	26.9							
121.5	122		183572	0.5	31.2							
122	122.5		183573	0.5	16.4							
122.5	123		183574	0.5	12.3							
123	123.5		183575	0.5	55.7							
123.5	124		183576	0.5	27.5							
124	124.5		183577	0.5	60.8							
124.5	125		183578	0.5	41.3							
		Compo 420			15.3	29.2	0.78		6.5	0.44		
183.5	184		183579	0.5	46.5							

ROTARY DRILL HOLE SAMPLING RECORD

ELKVALLEY COAL CORP.

HOLE NUMBER:		2828		AREA:		TURNBULL		FORDING RIVER OPERATIONS				
FROM	TO	DESCRIPTION	SAMPLE NUMBER	WIDTH	ASH	V.C.M.	I.M.	F.C.	F.S.I.	S	PHOS	REMARKS
184	184.5	422	183580	0.5	14.7							
184.5	185		183581	0.5	23.7							
185	185.5		183582	0.5	20.9							
185.5	186		183583	0.5	41.2							Ro. Max- 05-090
186	186.5		183584	0.5	60.5							
186.5	187		183585	0.5	22.9							
187	187.5		183586	0.5	16.9							
187.5	188		183587	0.5	24							
188	188.5		183588	0.5	48.2							
188.5	189		183589	0.5	24.2							
189	189.5		183590	0.5	26.2							
189.5	190		183591	0.5	19.1							
190	190.5		183592	0.5	35.9							
190.5	191		183593	0.5	13.3							
191	191.5		183594	0.5	76.4							
		Compo 421			33	22.33	0.63		6.5	0.64		
193.5	194		183595	0.5	79.1							
194	194.5		183596	0.5	70.4							
194.5	195		183597	0.5	47.3							
195	195.5	423	183598	0.5	15.5							
195.5	196		183599	0.5	9.6							
196	196.5		183600	0.5	26.8							
196.5	197		183601	0.5	55.9							
197	197.5		183602	0.5	60.8							
197.5	198	424	183603	0.5	18.2							
198	198.5		183604	0.5	60.1							
198.5	199		183605	0.5	42.4							
199	199.5		183606	0.5	65.3							
		Compo 422			29.3	22.21	0.59		5.5	0.49		
231	231.5	425	183607	0.5	20.1							
231.5	232		183608	0.5	15.1							

ROTARY DRILL HOLE SAMPLING RECORD										ELKVALLEY COAL CORP.		
HOLE NUMBER:		2828		AREA:		TURNBULL		FORDING RIVER OPERATIONS				
FROM	TO	DESCRIPTION	SAMPLE NUMBER	WIDTH	ASH	V.C.M.	I.M.	F.C.	F.S.I.	S	PHOS	REMARKS
232	232.5		183609	0.5	6.3							
232.5	233		183610	0.5	14.1							
233	233.5		183611	0.5	7.5							
233.5	234		183612	0.5	10.5							Ret Max 05-091
234	234.5		183613	0.5	10.6							
234.5	235		183614	0.5	12.1							
235	235.5		183615	0.5	9.1							
235.5	236		183616	0.5	14.1							
236	236.5		183617	0.5	23.8							
236.5	237		183618	0.5	30.6							
237	237.5		183619	0.5	6.8							
237.5	238		183620	0.5	7.5							
238	238.5		183621	0.5	15.3							
238.5	239		183622	0.5	16.4							
239	239.5		183623	0.5	7.4							
239.5	240		183624	0.5	6.9							
240	240.5		183625	0.5	81.6							
		Compo 423			16.6	24.91	0.62		7	0.52		
		Compo 424			40.3	18.94	0.64		6	0.55		
		Compo 425			11.3	24.31	0.61		7	0.49		

ROTARY DRILL HOLE SAMPLING RECORD										ELKVALLEY COAL CORP.		
HOLE NUMBER:		2829	AREA:		TURNBULL			FORDING RIVER OPERATIONS				
FROM	TO	DESCRIPTION	SAMPLE NUMBER	WIDTH	ASH	V.C.M.	I.M.	F.C.	F.S.I.	S	PHOS	REMARKS
38.5	39	318	181601	0.5	11.6							
39	39.5		181602	0.5	35.9							
39.5	40		181603	0.5	58.8							
40	40.5		181604	0.5	75							
		Compo 318			24.3	20.68	0.88		7	1.49		
66.5	67		181605	0.5	54.4							
67	67.5		181606	0.5	52							
67.5	68	319	181607	0.5	43.2							
68	68.5		181608	0.5	40.7							
68.5	69		181609	0.5	36							Ro Max
69	69.5		181610	0.5	40.4							RO-05-037
69.5	70		181611	0.5	39.7							
70	70.5		181612	0.5	54.6							
70.5	71		181613	0.5	66.6							
		Compo 319			41.2	20.58	0.89		3.5	0.51		
91	91.5		181614	0.5	78.8							
91.5	92		181615	0.5	72.8							
137.5	138	320	181616	0.5	21.7							
138	138.5		181617	0.5	12.8							
138.5	139		181618	0.5	28.3							
139	139.5		181619	0.5	18.5							
139.5	140		181620	0.5	61.1							
140	140.5		181621	0.5	11.9							
140.5	141		181622	0.5	20.3							
141	141.5		181623	0.5	37.6							Ro Max
141.5	142		181624	0.5	10.6							RO-05-038
142	142.5		181625	0.5	8.3							
142.5	143		181626	0.5	23							
143	143.5		181627	0.5	9.3							
143.5	144		181628	0.5	10							

ROTARY DRILL HOLE SAMPLING RECORD										ELKVALLEY COAL CORP.		
HOLE NUMBER:		2829	AREA:		TURNBULL	FORDING RIVER OPERATIONS						
FROM	TO	DESCRIPTION	SAMPLE NUMBER	WIDTH	ASH	V.C.M.	I.M.	F.C.	F.S.I.	S	PHOS	REMARKS
144	144.5		181629	0.5	11.7							
144.5	145		181630	0.5	13.2							
145	145.5		181631	0.5	9.2							
145.5	146		181632	0.5	12.6							
146	146.5		181633	0.5	19.7							
146.5	147		181634	0.5	60.5							
147	147.5		181635	0.5	82							
		Compo 320			20	24.23	0.93		7	0.52		
148	148.5		181636	0.5	46.6							
148.5	149		181637	0.5	63.9							
149	149.5		181638	0.5	20.3							
149.5	150		181639	0.5	73.3							
152	152.5		181640	0.5	20.7							
152.5	153		181641	0.5	68.6							
153	153.5		181642	0.5	85							
159.5	160	321	181643	0.5	18.9							
160	160.5		181644	0.5	15.9							
160.5	161		181645	0.5	29							
161	161.5		181646	0.5	53.1							
161.5	162		181647	0.5	65.7							
		Compo 321			22	23.29	0.82		7	0.58		
163.5	164		181648	0.5	29.8							
164	164.5	322	181649	0.5	25.6							
164.5	165		181650	0.5	46.2							
165	165.5		181651	0.5	78.1							
		Compo 322			34.2	20.57	0.69		5	0.71		
192	192.5		181652	0.5	28.2							
192.5	193		181653	0.5	77.1							
193	193.5		181654	0.5	83.2							

ROTARY DRILL HOLE SAMPLING RECORD										ELKVALLEY COAL CORP.		
HOLE NUMBER:		2829		AREA:		TURNBULL		FORDING RIVER OPERATIONS				
FROM	TO	DESCRIPTION	SAMPLE NUMBER	WIDTH	ASH	V.C.M.	I.M.	F.C.	F.S.I.	S	PHOS	REMARKS
193.5	194		181655	0.5	50.1							
194	194.5		181656	0.5	25.1							
194.5	195	323	181657	0.5	29.8							
195	195.5		181658	0.5	19.3							
195.5	196		181659	0.5	11.6							
196	196.5		181660	0.5	9.9							Ro Max
196.5	197		181661	0.5	7.7							RO-05-039
197	197.5		181662	0.5	11.1							
197.5	198		181663	0.5	11.9							
198	198.5		181664	0.5	9.6							
198.5	199		181665	0.5	27.8							
199	199.5		181666	0.5	43.7							
199.5	200		181667	0.5	28.1							
200	200.5		181668	0.5	71.9							
		Compo 323			20.1	23.53	0.71		6	0.38		
231.5	232		181669	0.5	34.9							
232	232.5	324	181670	0.5	16							
232.5	233		181671	0.5	36.5							
233	233.5		181672	0.5	73							
233.5	234		181673	0.5	80.8							
		Compo 324			30	18.89	0.57		1	0.52		
234.5	235		181674	0.5	48.8							
235	235.5		181675	0.5	76.3							
235.5	236		181676	0.5	79.6							
241.5	242		181677	0.5	62							
242	242.5		181678	0.5	83.8							
242.5	243		181679	0.5	59.3							
243	243.5		181680	0.5	69.5							
243.5	244		181681	0.5	71.1							

ROTARY DRILL HOLE SAMPLING RECORD										ELKVALLEY COAL CORP.		
HOLE NUMBER:		2829		AREA:		TURNBULL		FORDING RIVER OPERATIONS				
FROM	TO	DESCRIPTION	SAMPLE NUMBER	WIDTH	ASH	V.C.M.	I.M.	F.C.	F.S.I.	S	PHOS	REMARKS
250	250.5		181682	0.5	83.1							
250.5	251		181683	0.5	80.4							
251	251.5		181684	0.5	73.5							
251.5	252		181685	0.5	74.5							
274.5	275		181686	0.5	44.1							
275	275.5		181687	0.5	80.2							
275.5	276		181688	0.5	81.9							
299.5	300		181689	0.5	58.6							
300	300.5		181690	0.5	53.7							
300.5	301	325	181691	0.5	44.5							
301	301.5		181692	0.5	32.6							
301.5	302		181693	0.5	25.8							
302	302.5		181694	0.5	16.1							
302.5	303		181695	0.5	39.4							Ro Max
303	303.5		181696	0.5	20.9							RO-05-040
303.5	304		181697	0.5	16.2							
304	304.5		181698	0.5	16.8							
304.5	305		181699	0.5	25.5							
305	305.5		181700	0.5	26.9							
305.5	306		181701	0.5	44.3							
306	306.5		181702	0.5	63.9							
306.5	307		181703	0.5	93.2							
		Compo 325			28.3	21.15	0.59		1	0.3		
307.5	308		181704	0.5	67.6							
308	308.5		181705	0.5	57.8							

ROTARY DRILL HOLE SAMPLING RECORD										ELKVALLEY COAL CORP.		
HOLE NUMBER:		2830		AREA:		TURNBULL		FORDING RIVER OPERATIONS				
FROM	TO	DESCRIPTION	SAMPLE NUMBER	WIDTH	ASH	V.C.M.	I.M.	F.C.	F.S.I.	S	PHOS	REMARKS
5	5.5		181776	0.5	61.5							
5.5	6		181777	0.5	77.8							
6	6.5		181778	0.5	61.1							
6.5	7		181779	0.5	75.9							
7	7.5		181780	0.5	80.8							
9	9.5		181781	0.5	40.7							
9.5	10		181782	0.5	82.1							
10	10.5		181783	0.5	86.7							
22.5	23	326	181784	0.5	29.3							
23	23.5		181785	0.5	44.3							
23.5	24		181786	0.5	51.3							
24	24.5		181787	0.5	72.6							
24.5	25		181788	0.5	87.6							
		Compo 326			37	20.99	0.65		3.5	0.5		
26.5	27		181789	0.5	40.3							
27	27.5		181790	0.5	54.4							
27.5	28		181791	0.5	67.8							
28	28.5		181792	0.5	87.1							
64	64.5		181793	0.5	42.7							
64.5	65		181794	0.5	82.9							
65	65.5		181795	0.5	76.7							
65.5	66	327	181796	0.5	38.4							
66	66.5		181797	0.5	14.5							
66.5	67		181798	0.5	12.5							
67	67.5		181799	0.5	34.2							
67.5	68		181800	0.5	20.9							
68	68.5		181801	0.5	22.1							
68.5	69		181802	0.5	10.9							

ROTARY DRILL HOLE SAMPLING RECORD										ELKVALLEY COAL CORP.		
HOLE NUMBER:		2830	AREA:		TURNBULL					FORDING RIVER OPERATIONS		
FROM	TO	DESCRIPTION	SAMPLE NUMBER	WIDTH	ASH	V.C.M.	I.M.	F.C.	F.S.I.	S	PHOS	REMARKS
69	69.5		181803	0.5	15.2							
69.5	70		181804	0.5	16.7							
70	70.5		181805	0.5	16.6							RoMax
70.5	71		181806	0.5	6.3							RO-041-05
71	71.5		181807	0.5	8.2							
71.5	72		181808	0.5	24.8							
72	72.5		181809	0.5	19.7							
72.5	73		181810	0.5	24.4							
73	73.5		181811	0.5	16.1							
73.5	74		181812	0.5	17.3							
74	74.5		181813	0.5	65.8							
74.5	75		181814	0.5	20.8							
75	75.5		181815	0.5	13.8							
75.5	76		181816	0.5	15.2							
76	76.5		181817	0.5	14.1							
76.5	77		181818	0.5	38.8							
77	77.5		181819	0.5	71.4							
		Compo 327			21.4	23.7	0.7		6.5	0.45		
95.5	96		181820	0.5	67.6							
96	96.5		181821	0.5	81.5							
96.5	97		181822	0.5	84.1							
97	97.5		181823	0.5	83.6							
116	116.5	328	181824	0.5	30.4							
116.5	117		181825	0.5	25.2							RoMax
117	117.5		181826	0.5	16.2							RO-042-05
117.5	118		181827	0.5	32.2							
118	118.5		181828	0.5	47.1							
118.5	119		181829	0.5	66.4							
119	119.5		181830	0.5	47.4							
119.5	120		181831	0.5	40.3							

ROTARY DRILL HOLE SAMPLING RECORD										ELKVALLEY COAL CORP.		
HOLE NUMBER:		2830		AREA:		TURNBULL		FORDING RIVER OPERATIONS				
FROM	TO	DESCRIPTION	SAMPLE NUMBER	WIDTH	ASH	V.C.M.	I.M.	F.C.	F.S.I.	S	PHOS	REMARKS
120	120.5		181832	0.5	60.2							
120.5	121		181833	0.5	80.9							
121	121.5		181834	0.5	73.3							
121.5	122		181835	0.5	70.9							
122	122.5		181836	0.5	83.7							
122.5	123		181837	0.5	80.8							
		Compo 328			26.1	20.87	0.58		4	1.37		
129	129.5		181838	0.5	75.9							
129.5	130		181839	0.5	58.9							
130	130.5		181840	0.5	53.8							
130.5	131		181841	0.5	75.4							
131	131.5		181842	0.5	34.7							
131.5	132		181843	0.5	56.3							
132	132.5		181844	0.5	65.6							
132.5	133		181845	0.5	77.4							
135.5	136		181846	0.5	69.1							
136	136.5		181847	0.5	70.3							
141	141.5		181848	0.5	62.7							
141.5	142		181849	0.5	57.4							
142	142.5		181850	0.5	56.1							
142.5	143		181951	0.5	69.8							
175	175.5		181952	0.5	62.6							
175.5	176		181953	0.5	45.4							
176	176.5		181954	0.5	39.6							
197.5	198		181955	0.5	50.3							
198	198.5	329	181956	0.5	35.1							
198.5	199		181957	0.5	31.5							

ROTARY DRILL HOLE SAMPLING RECORD

ELKVALLEY COAL CORP.

HOLE NUMBER:		2830		AREA:		TURNBULL		FORDING RIVER OPERATIONS				
FROM	TO	DESCRIPTION	SAMPLE NUMBER	WIDTH	ASH	V.C.M.	I.M.	F.C.	F.S.I.	S	PHOS	REMARKS
199	199.5		181958	0.5	58.8							
199.5	200		181959	0.5	72.1							
		Compo 329			33	17.93	0.55		1.5	0.47		
211	211.5		181960	0.5	16.6							
211.5	212	330	181961	0.5	12.9							
212	212.5		181962	0.5	30.9							RoMax
212.5	213		181963	0.5	27.1							RO-043-05
213	213.5		181964	0.5	50.1							
213.5	214		181965	0.5	19.4							
214	214.5		181966	0.5	64.3							
		Compo 330			24.2	20.36	0.54		3	0.35		
223.5	224		181967	0.5	77.5							
224	224.5		181968	0.5	68.6							
224.5	225		181969	0.5	57.6							
225	225.5		181970	0.5	30.9							
225.5	226		181971	0.5	77.6							
226.5	227		181972	0.5	36.4							
227	227.5		181973	0.5	79.5							
231	231.5		181974	0.5	47.7							
231.5	232		181975	0.5	53.3							
232	232.5		181976	0.5	44.2							

ROTARY DRILL HOLE SAMPLING RECORD										ELKVALLEY COAL CORP.		
HOLE NUMBER:		2831		AREA:		TURNBULL		FORDING RIVER OPERATIONS				
FROM	TO	DESCRIPTION	SAMPLE NUMBER	WIDTH	ASH	V.C.M.	I.M.	F.C.	F.S.I.	S	PHOS	REMARKS
33.5	34		182501	0.5	57.9							
34	34.5		182502	0.5	28.2							
34.5	35		182503	0.5	65.5							
43.5	44		182504	0.5	62.1							
44	44.5		182505	0.5	78.1							
89	89.5		182506	0.5	69.8							
89.5	90		182507	0.5	71.4							
90	90.5		182508	0.5	33.1							
90.5	91		182509	0.5	23.8							
91	91.5		182510	0.5	35.6							
91.5	92		182511	0.5	10.6							
92	92.5	Compo 430	182512	0.5	24.2							
92.5	93		182513	0.5	21.9							
93	93.5		182514	0.5	20.4							
93.5	94		182515	0.5	30.1							
94	94.5		182516	0.5	19.3							
94.5	95		182517	0.5	14.1							
95	95.5		182518	0.5	12.2							
95.5	96		182519	0.5	27.2							
96	96.5		182520	0.5	11.9							
96.5	97		182521	0.5	22.9							
97	97.5		182522	0.5	19.2							
97.5	98		182523	0.5	20.6							
98	98.5		182524	0.5	22.5							
98.5	99		182525	0.5	16.7							
99	99.5		182526	0.5	20.6							
99.5	100		182527	0.5	9.8							
100	100.5		182528	0.5	25.1							
100.5	101		182529	0.5	12.9							

ROTARY DRILL HOLE SAMPLING RECORD							ELKVALLEY COAL CORP.					
HOLE NUMBER:		2831		AREA:		TURNBULL		FORDING RIVER OPERATIONS				
FROM	TO	DESCRIPTION	SAMPLE NUMBER	WIDTH	ASH	V.C.M.	I.M.	F.C.	F.S.I.	S	PHOS	REMARKS
260	260.5		182557	0.5	36.2							
260.5	261		182558	0.5	24.3							
261	261.5	431	182559	0.5	21.8							
261.5	262		182560	0.5	12							
262	262.5		182561	0.5	10							
262.5	263		182562	0.5	30.5							
263	263.5		182563	0.5	58.6							
263.5	264		182564	0.5	78.6							
264	264.5		182565	0.5	74.5							
264.5	265		182566	0.5	25							
265	265.5		182567	0.5	32.4							
265.5	266	432	182568	0.5	20.1							
266	266.5		182569	0.5	56							
266.5	267		182570	0.5	67.6							
267	267.5		182571	0.5	48.1							
267.5	268		182572	0.5	19							
268	268.5	433	182573	0.5	11.1							
268.5	269		182574	0.5	36.8							
269	269.5		182575	0.5	80.5							
269.5	270		182576	0.5	81.7							
270	270.5		182577	0.5	48.4							
270.5	271		182578	0.5	49.4							
271	271.5		182579	0.5	35.6							
271.5	272		182580	0.5	74.3							
272	272.5		182581	0.5	72.4							
272.5	273		182582	0.5	86							
273	273.5		182583	0.5	52.3							
273.5	274		182584	0.5	81.1							
		Compo 431			30.6	16.35	0.42		2.5	0.39		
		compo432			26.9	17.78	0.37		2	0.42		
		Compo 433			22.3	18.06	0.37		2	0.43		