

century-geo.com
COMPANY ANGIO AMERICAN
WELL P001
FIELD N/A
MUNICIPALITY TUBBER RIDGE
PROVINCE BRITISH COLUMBIA
OTHER SERVICES
NEUTRON DIAPHRAGM N/A

LOCATION PROSPECT
SECTION N/A
TOWNSHIP N/A
RANGE N/A
API NO. N/A
UNIQUE WELL ID. N/A

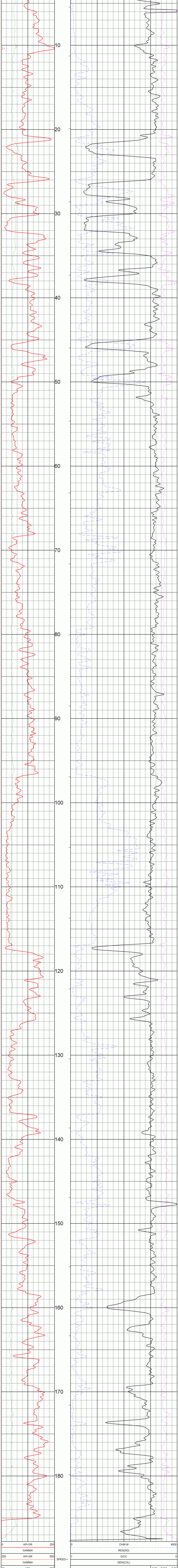
PERMANENT DATUM G.T.L.
LOG MEASURED FROM G.L.
DATE 12/13/06
DEPTH DRILLER 8.89
BIT SIZE 0.21
LOG TOP 187.79
LOG BOTTOM 10.18

CASING BOTTOM 7.92
CASING OD 10.18
ROD TYPE STEEL
ROD HOLE FLUID WATER
ROD TEMPERATURE N/A
MUD RES. N/A
MUD WEIGHT N/A
WITNESSED BY
RECORDED BY
REMARKS 1
REMARKS 2

ALL SERVICES PROVIDED SUBJECT TO STANDARD TERMS AND CONDITIONS

1:100 BULK DENSITY P001 12/13/06
LOG PARAMETERS

MATRIX DENSITY : 2.65 NEUTRON MATRIX : SANDSTONE MATRIX DELTA T : 177
MAGNETIC DECL : 21.6 ELECT. CUTOFF : 99999 BIT SIZE : 8.89
PRESENTATION NAME/DATE = 9239C1.0 12/13/2006 VERSION = 3.64EE



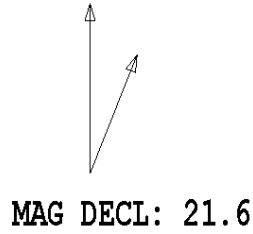
1:100 BULK DENSITY P001 12/13/06
LOG PARAMETERS

MATRIX DENSITY : 2.65 NEUTRON MATRIX : SANDSTONE MATRIX DELTA T : 177
MAGNETIC DECL : 21.6 ELECT. CUTOFF : 99999 BIT SIZE : 8.89
PRESENTATION NAME/DATE = 9239C1.0 12/13/2006 VERSION = 3.64EE

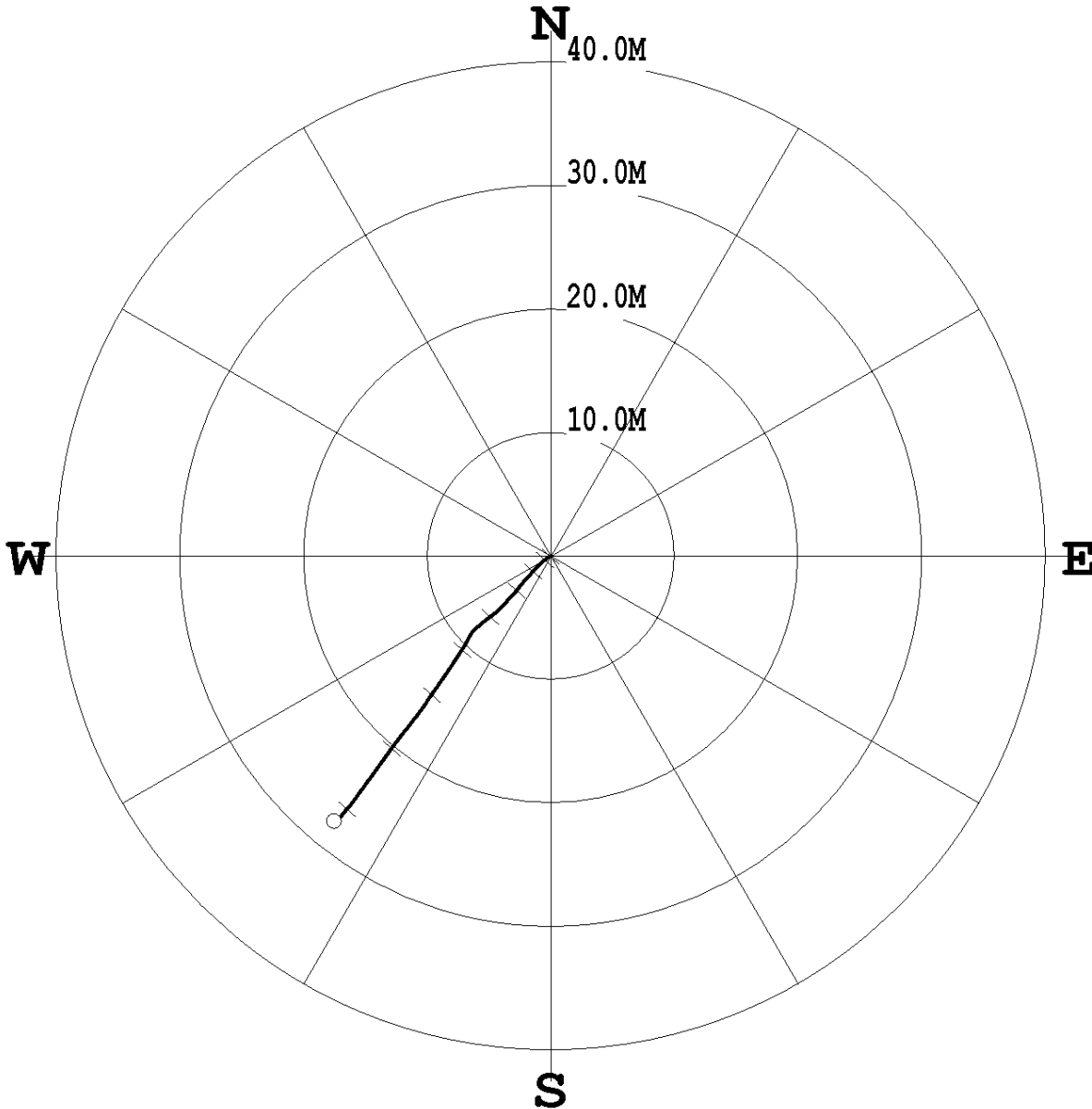
DATE	TIME	SENSOR	STANDARD	RESPONSE
1	Dec13.06 10:48:21	GAMMA	Default [CPS]	Default [CPS]
2	Dec13.06 10:48:21	GAMMA	283.000 [API-GR]	288.00 [CPS]
3	Dec13.06 10:49:11	VOLTAGE	31.850 [MV]	5358.00 [CPS]
4	Dec13.06 10:50:35	VOLTAGE	572.000 [MV]	76681.00 [CPS]
5	Dec13.06 10:50:35	CALIPER	25.400 [MM]	25725.00 [CPS]
6	Dec13.06 10:50:35	CALIPER	203.200 [MM]	43375.00 [CPS]
7	Dec13.06 10:51:33	DEN(LS)	1.000 [G/CC]	5650.00 [CPS]
8	Dec13.06 10:51:33	DEN(LS)	2.383 [G/CC]	500.00 [CPS]
9	Dec13.06 10:52:15	DEN(SS)	1.000 [G/CC]	9950.00 [CPS]
10	Dec13.06 15:43:03	DEN(SS)	2.383 [G/CC]	4575.00 [CPS]
11	Dec13.06 10:53:14	CALIPERL	76.200 [MM]	109092.90 [CPS]
12	Dec13.06 10:53:14	CALIPERL	254.000 [MM]	314045.19 [CPS]
13	Dec13.06 10:53:55	CURRENT	39.600 [UA]	10840.00 [CPS]
14	Dec13.06 10:53:55	CURRENT	281.000 [UA]	28568.00 [CPS]
15	Dec13.06 10:45:28	F	Default [CPS]	
16	Dec13.06 10:45:28	X	Default [CPS]	

PLAN VIEW COMPU-LOG DEVIATION

CLIENT: ANGLO AMERICAN
LOCATION: N/A
HOLE ID: P001
DATE OF LOG: 12/13/06
PROBE: 9057A 1067



SCALE: 5 M/CM
TRUE DEPTH: 184.42 M
AZIMUTH: 219.2
DISTANCE: 27.7 M
+ = 20 M INCR
○ = BOTTOM OF HOLE

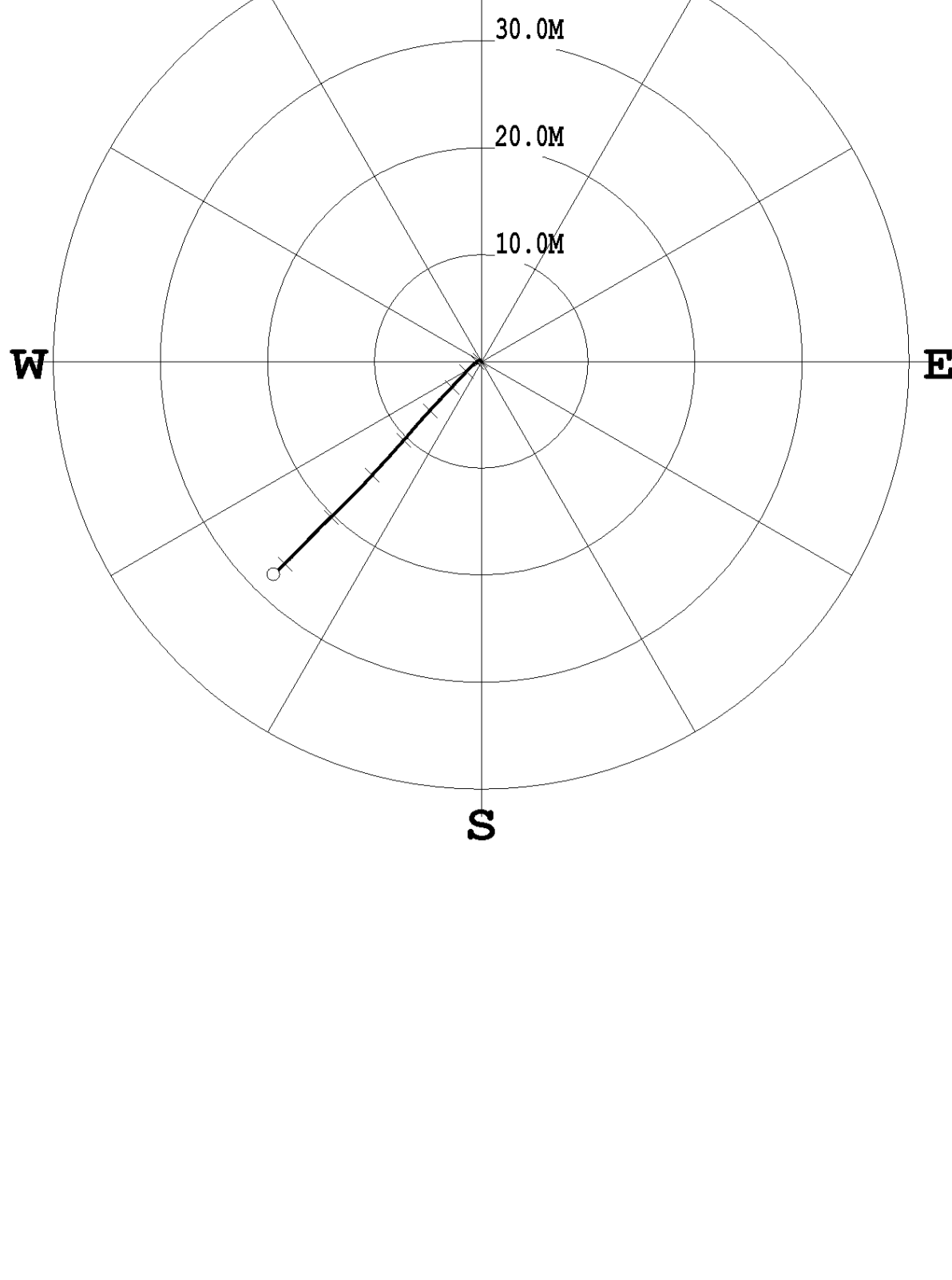


PLAN VIEW COMPU-LOG DEVIATION

CLIENT: ANGLO AMERICAN
LOCATION: N/A
HOLE ID: P001
DATE OF LOG: 12/13/06
PROBE: 9411A 390

MAG DECL: 21.6

SCALE: 5 M/CM
TRUE DEPTH: 184.26 M
AZIMUTH: 224.3
DISTANCE: 27.8 M
+ = 20 M INCR
○ = BOTTOM OF HOLE



Century-geo.com
 COMPANY: ANGLO AMERICAN
 WELL: P001
 FIELD: N/A
 MUNICIPALITY: TUMBER RIDGE
 PROVINCE: BRITISH COLUMBIA
 LOCATION: PROSPECT
 SECTION: N/A
 TOWNSHIP: N/A
 RANGE: N/A
 APN NO.: N/A
 UNIQUE WELL ID: N/A

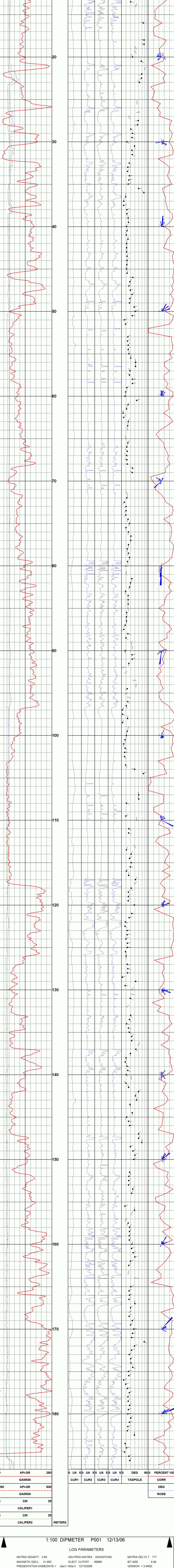
OTHER SERVICES:
 NEUTRON: N/A
 RESISTIVITY: N/A

PERMANENT DATUM: G.S.L.
 LOG MEASURED FROM: G.S.L.
 ELEVATION RB: N/A
 ELEVATION DI: N/A
 DATE: 12/13/06
 DEPTH DILLER: 188.86
 BIT SIZE: 8.89
 LOG TOP: 3.46
 LOG BOTTOM: 10.16
 CASING CD: 10.16
 CASING BOTTOM: 7.92

ROBBERIE FLUID: WATER
 ROBBOR TEMPERATURE: N/A
 MUD WEIGHT: N/A
 WITNESSED BY: N/A
 FACHECK: N/A
 RECORDED BY: 3.5" BIT G.L. TO 370' 3.25" BIT TO TD
 REMARKS 1: N/A
 REMARKS 2: N/A
 ALL SERVICES PROVIDED SUBJECT TO STANDARD TERMS AND CONDITIONS

1:100 DIPMETER P001 12/13/06

LOG PARAMETERS
 MATRIX DENSITY : 2.65
 MAGNETIC DECL : 21.600
 PRESENTATION NAME/DATE = dipc1-100a.0 12/13/2006
 NEUTRON MATRIX : SANDSTONE
 ELECT. CUTOFF : 99999
 MATRIX DELTA T : 177
 BIT SIZE : 8.89
 VERSION = 3.64EE

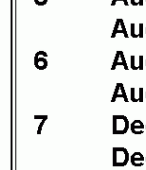
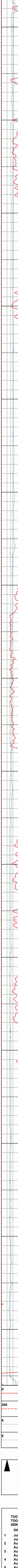
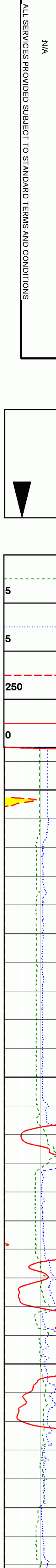
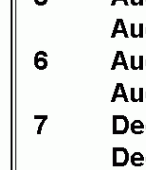
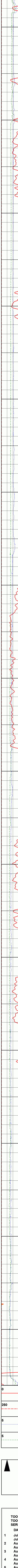
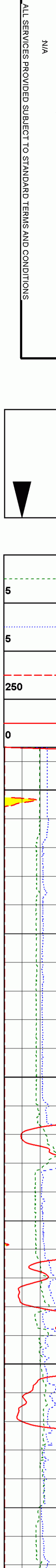
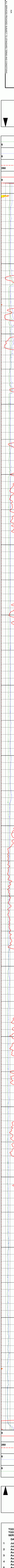


1:100 DIPMETER P001 12/13/06

LOG PARAMETERS
 MATRIX DENSITY : 2.65
 MAGNETIC DECL : 21.600
 PRESENTATION NAME/DATE = dipc1-100a.0 12/13/2006
 NEUTRON MATRIX : SANDSTONE
 ELECT. CUTOFF : 99999
 MATRIX DELTA T : 177
 BIT SIZE : 8.89
 VERSION = 3.64EE

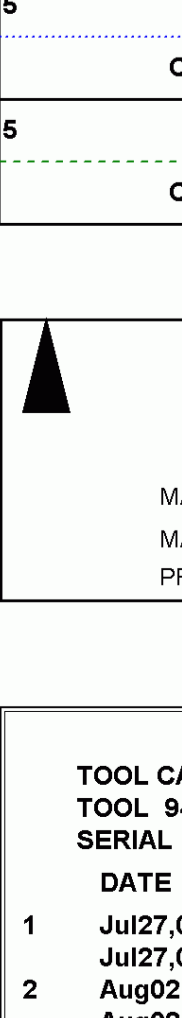
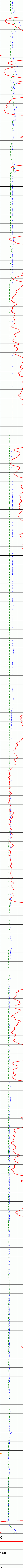
TOOL CALIBRATION P001 12/13/06 12:12
 TOOL 9411A TM VERSION 1
 SERIAL NUMBER 390

DATE	TIME	SENSOR	STANDARD	RESPONSE
1	Jul27.05 10:45:12	GAMMA	Default [CPS]	Default [CPS]
1	Jul27.05 10:45:12	GAMMA	Default [CPS]	Default [CPS]
2	Aug02.05 09:21:29	VOLTAG	104.800 [MV]	720.00 [CPS]
2	Aug02.05 09:21:29	VOLTAG	350.700 [MV]	2360.00 [CPS]
3	Aug02.05 10:37:25	CUR1	4.213 [UA]	7855.00 [CPS]
3	Aug02.05 10:37:25	CUR1	0.000 [UA]	80.00 [CPS]
4	Aug02.05 09:27:32	CUR2	4.177 [UA]	7910.00 [CPS]
4	Aug02.05 09:27:32	CUR2	0.000 [UA]	105.00 [CPS]
5	Aug02.05 09:24:02	CUR3	4.250 [UA]	7900.00 [CPS]
5	Aug02.05 09:24:02	CUR3	0.000 [UA]	140.00 [CPS]
6	Aug02.05 09:26:09	CUR4	4.270 [UA]	7860.00 [CPS]
6	Aug02.05 09:26:09	CUR4	0.000 [UA]	180.00 [CPS]
7	Dec13.06 13:53:50	CALIPER	7.620 [INCH]	10038.66 [CPS]
7	Dec13.06 13:53:50	CALIPER	25.400 [INCH]	3548.14 [CPS]



LOG PARAMETERS
MATRIX DENSITY : 2.65
MAGNETIC DECL : 21.600
PRESENTATION NAME/DATE = dipc1-100STICKPLOTa.0 12/14/2006

NEUTRON MATRIX : SANDSTONE
ELECT. CUTOFF : 99999
ROSE DEGR : 177
BIT SIZE : 8.89
VERSION = 3.64EE



1:100 DIPMETER STICK PLOT P001 12/13/06

LOG PARAMETERS
MATRIX DENSITY : 2.65
MAGNETIC DECL : 21.600
PRESENTATION NAME/DATE = dipc1-100STICKPLOTa.0 12/14/2006

NEUTRON MATRIX : SANDSTONE
ELECT. CUTOFF : 99999
ROSE DEGR : 177
BIT SIZE : 8.89
VERSION = 3.64EE

TOOL CALIBRATION P001 12/13/06 12:12
TOOL 9411A TM VERSION 1
SERIAL NUMBER 390

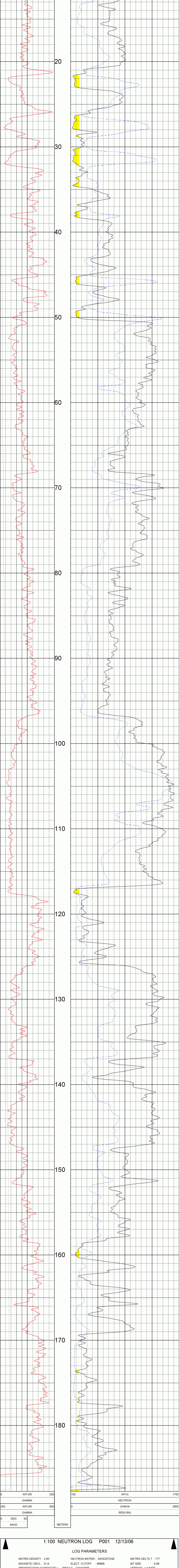
DATE	TIME	SENSOR	STANDARD	RESPONSE
1	Jul27_05 10:45:12	GAMMA	Default	Default
1	Jul27_05 10:45:12	GAMMA	Default	Default
2	Aug02_05 09:21:29	VOLTAG	104.800 [MV]	720.00 [CPS]
2	Aug02_05 09:21:29	VOLTAG	350.700 [MV]	2360.00 [CPS]
3	Aug02_05 10:37:25	CUR1	4.213 [UA]	7855.00 [CPS]
3	Aug02_05 10:37:25	CUR1	0.000 [UA]	80.00 [CPS]
4	Aug02_05 09:27:32	CUR2	4.177 [UA]	7910.00 [CPS]
4	Aug02_05 09:27:32	CUR2	0.000 [UA]	105.00 [CPS]
5	Aug02_05 09:24:02	CUR3	4.250 [UA]	7900.00 [CPS]
5	Aug02_05 09:24:02	CUR3	0.000 [UA]	140.00 [CPS]
6	Aug02_05 09:26:09	CUR4	4.200 [UA]	7860.00 [CPS]
6	Aug02_05 09:26:09	CUR4	0.000 [UA]	180.00 [CPS]
7	Dec13_06 13:53:50	CALIPER	7.620 [INCH]	10038.66 [CPS]
7	Dec13_06 13:53:50	CALIPER	25.400 [INCH]	3548.14 [CPS]

COMPANY	ANGLO AMERICAN	OTHER SERVICES	
WELL	P001	DENSITY	
FIELD	N/A	DIAMETER	
MUNICIPALITY	TUMBER RIDGE		
PROVINCE	ARTIFICIAL COLLIERY		
LOCATION	PROSPECT		
SECTION	N/A		
TOWNSHIP	N/A		
RANGE	N/A		
APN NO.	N/A		
UNIQUE WELL ID	N/A		
PERMANENT DATUM	51.1	ELEVATION KB N/A	
LOG MEASURED FROM G.L.		ELEVATION DF N/A	
DATE	12/13/06	ELEVATION GL N/A	
DEPTH DRIILLER	181.86		
BIT SIZE	8.89		
LOG TOP	0.23		
LOG BOTTOM	181.70		
CASING OD	10.18		
CASING BOTTOM	7.92		
CASING TYPE	STEEL		
BOREHOLE FLUID	WATER		
RM TEMPERATURE	N/A		
MUD RES	N/A		
MUD WEIGHT	N/A		
WITNESSED BY			
RECORDED BY	FRACZHEK		
REMARKS 1	3.5 BIT GL TO 397.235 BIT TO TD		
REMARKS 2	N/A		

1:100 NEUTRON LOG P001 12/13/06

LOG PARAMETERS

MATRIX DENSITY : 2.65	NEUTRON MATRIX : SANDSTONE	MATRIX DELTA T : 177
MAGNETIC DECL : 21.6	ELECT. CUTOFF : 99999	BIT SIZE : 8.89
PRESENTATION NAME/DATE = 9057A.0 12/13/2006		VERSION = 3.64EE



1:100 NEUTRON LOG P001 12/13/06

LOG PARAMETERS

MATRIX DENSITY : 2.65	NEUTRON MATRIX : SANDSTONE	MATRIX DELTA T : 177
MAGNETIC DECL : 21.6	ELECT. CUTOFF : 99999	BIT SIZE : 8.89
PRESENTATION NAME/DATE = 9057A.0 12/13/2006		VERSION = 3.64EE

TOOL CALIBRATION P001 12/13/06 10:17
 TOOL 9057A TM VERSION 1
 SERIAL NUMBER 1067

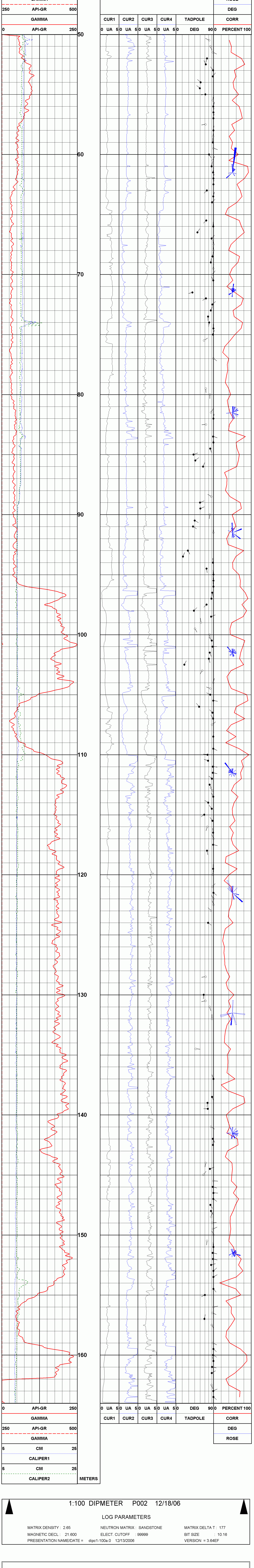
DATE	TIME	SENSOR	STANDARD	RESPONSE
1	May22.06 08:03:18	GAMMA	0.000 [API-GR]	1.00 [CPS]
2	May22.06 08:03:18	GAMMA	325.000 [API-GR]	325.00 [CPS]
3	Oct24.05 14:50:54	NEUTRON	Default [CPS]	Default [CPS]
3	Oct24.05 14:50:54	NEUTRON	152.000 [API-N]	167.00 [CPS]
4	Dec01.05 14:21:19	SP	Default [CPS]	Default [CPS]
4	Dec01.05 14:21:19	SP	Default [CPS]	Default [CPS]
4	Dec01.05 14:54:52	RES(16N)	Default [CPS]	Default [CPS]
4	Dec01.05 14:54:52	RES(16N)	Default [CPS]	Default [CPS]
5	Dec01.05 14:55:00	RES(64N)	Default [CPS]	Default [CPS]
5	Dec01.05 14:55:00	RES(64N)	Default [CPS]	Default [CPS]
6	Dec01.05 14:55:07	TEMP	Default [CPS]	Default [CPS]
6	Dec01.05 14:55:07	TEMP	Default [CPS]	Default [CPS]
7	Dec01.05 14:55:17	RES	Default [CPS]	Default [CPS]
7	Dec01.05 14:55:17	RES	Default [CPS]	Default [CPS]
8	Apr11.02 17:42:07	POR(NEU)	100.000 [PERCENT]	178.00 [CPS]

COMPANY	ANGLO AMERICAN	OTHER SERVICES:	DENSITY
WELL	P002	NEUTRON	NEUTRON
FIELD	N/A		
MUNICIPALITY	TUMBLER RIDGE		
PROVINCE	BRITISH COLUMBIA		
LOCATION	PROSPECT		
SECTION	N/A		
TOWNSHIP	N/A		
RANGE	N/A		
API NO.	N/A		
UNIQUE WELL ID.	N/A		
PERMANENT DATUM	G.L.	ELEVATION: N/A	
LOG MEASURED FROM	G.L.	ELEVATION: N/A	
DRL MEASURED FROM	G.L.	ELEVATION: N/A	
DATE	12/18/06		
DEPTH DRILLER	1:89.16		
BIT SIZE	10.16		
LOG TOP	7.00		
LOG BOTTOM	164.00		
CASING OD	10.16		
CASING BOTTOM	3.048		
CASING TYPE	STEEL		
BORHOLE FLUID	WATER		
RM TEMPERATURE	N/A		
MUD RES	N/A		
MUD WEIGHT	N/A		
WITNESSED BY	N/A		
RECORDED BY	RAOZHEK		
REMARKS 1	80 DEGREE ANGLE HOLE		
REMARKS 2	AZIMUTH UNKNOWN		

1:100 DIPMETER P002 12/18/06

LOG PARAMETERS

MATRIX DENSITY : 2.65	NEUTRON MATRIX : SANDSTONE	MATRIX DELTA T : 177
MAGNETIC DECL : 21.600	ELECT. CUTOFF : 99999	BIT SIZE : 10.16
PRESENTATION NAME/DATE = dipc1-100a 0	12/13/2006	VERSION = 3.64EF



1:100 DIPMETER P002 12/18/06

LOG PARAMETERS

MATRIX DENSITY : 2.65	NEUTRON MATRIX : SANDSTONE	MATRIX DELTA T : 177
MAGNETIC DECL : 21.600	ELECT. CUTOFF : 99999	BIT SIZE : 10.16
PRESENTATION NAME/DATE = dipc1-100a 0	12/13/2006	VERSION = 3.64EF

TOOL CALIBRATION P002 12/18/06 15:25

DATE	TIME	SENSOR	STANDARD	RESPONSE
1	Jul27,05 10:45:12	GAMMA	Default [CPS]	Default [CPS]
1	Jul27,05 10:45:12	GAMMA	Default [CPS]	Default [CPS]
2	Aug02,05 09:21:29	VOLTAG	104.800 [MV]	720.00 [CPS]
2	Aug02,05 09:21:29	VOLTAG	350.700 [MV]	2360.00 [CPS]
3	Aug02,05 10:37:25	CUR1	0.000 [UA]	7855.00 [CPS]
3	Aug02,05 10:37:25	CUR2	4.177 [UA]	80.00 [CPS]
4	Aug02,05 09:27:32	CUR3	0.000 [UA]	7910.00 [CPS]
4	Aug02,05 09:27:32	CUR4	4.250 [UA]	105.00 [CPS]
5	Aug02,05 09:24:02	CUR3	4.250 [UA]	7900.00 [CPS]
5	Aug02,05 09:24:02	CUR4	0.000 [UA]	140.00 [CPS]
6	Aug02,05 09:26:09	CUR3	4.270 [UA]	7860.00 [CPS]
6	Aug02,05 09:26:09	CUR4	0.000 [UA]	180.00 [CPS]
7	Dec18,06	CALIPER1	7.620 [INCH]	10039.00 [CPS]
7	Dec18,06	CALIPER2	25.400 [INCH]	3548.00 [CPS]

COMPANY	ANGLO-AMERICAN	OTHER SERVICES	
WELL	P002	DENSITY	IRMI-E
FIELD	N/A	IRMI-E	N/A
MUNICIPALITY	TIMBLER RIDGE		
PROVINCE	SOUTH-COLUMBIA		
PROSPECT			

LOCATION	
SECTION	N/A
TOWNSHIP	N/A
RANGE	N/A
API NO.	N/A
UNIQUE WELL ID	N/A
PERMANENT DATUM	G.L.
LOG MEASURED FROM	G.L.
DRL MEASURED FROM	G.L.
ELEVATION NG N/A	
ELEVATION DE N/A	
ELEVATION GL N/A	

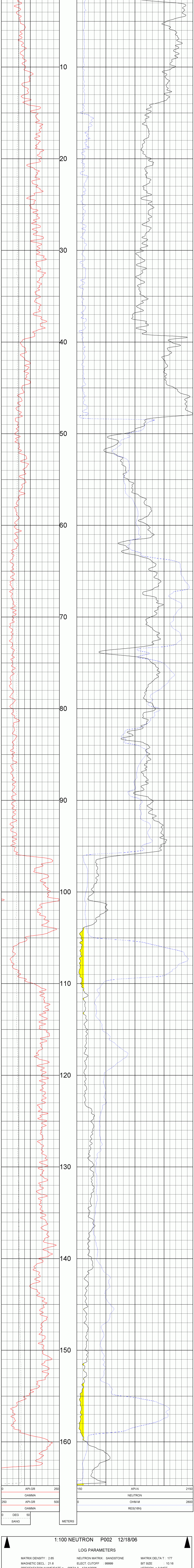
DATE	12/18/06
DEPTH DRILLER	189.16
LOG TOP	-10.16
LOG BOTTOM	-184.73
CASING OD	3.048
CASING BOTTOM	
CASING TYPE	STEEL
BORING FLUID	WATER
ROD TEMPERATURE	N/A
MUD RES	N/A
MUD WEIGHT	N/A
WITNESSED BY	N/A
RECORDED BY	RACZHECK
REMARKS 1	90 DEGREE ANGLE HOLE
REMARKS 2	AZIMUTH UNKNOWN

ALL SERVICES PROVIDED SUBJECT TO STANDARD TERMS AND CONDITIONS

1:100 NEUTRON P002 12/18/06

LOG PARAMETERS

MATRIX DENSITY : 2.65	NEUTRON MATRIX : SANDSTONE	MATRIX DELTA T : 177
MAGNETIC DECL : 21.6	ELECT. CUTOFF : 99999	BIT SIZE : 10.16
PRESENTATION NAME/DATE = 9057A.0 12/14/2006		VERSION = 3.64EE



1:100 NEUTRON P002 12/18/06

LOG PARAMETERS

MATRIX DENSITY : 2.65	NEUTRON MATRIX : SANDSTONE	MATRIX DELTA T : 177
MAGNETIC DECL : 21.6	ELECT. CUTOFF : 99999	BIT SIZE : 10.16
PRESENTATION NAME/DATE = 9057A.0 12/14/2006		VERSION = 3.64EE

TOOL CALIBRATION P002 12/18/06 13:58

TOOL SERIAL NUMBER	DATE	TIME	SENSOR	STANDARD	RESPONSE
1067	May22.06	08:03:18	GAMMA	0.000 [API-GR]	1.00 [CPS]
	May22.06	08:03:18	GAMMA	325.000 [API-GR]	325.00 [CPS]
	Oct24.05	14:50:54	NEUTRON	Default [CPS]	Default [CPS]
	Dec01.05	14:50:54	NEUTRON	152.000 [API-N]	167.00 [CPS]
	Dec01.05	14:21:19	SP	Default [CPS]	Default [CPS]
	Dec01.05	14:21:19	SP	Default [CPS]	Default [CPS]
	Dec01.05	14:54:52	RES(16N)	Default [CPS]	Default [CPS]
	Dec01.05	14:54:52	RES(16N)	Default [CPS]	Default [CPS]
	Dec01.05	14:55:00	RES(64N)	Default [CPS]	Default [CPS]
	Dec01.05	14:55:00	RES(64N)	Default [CPS]	Default [CPS]
	Dec01.05	14:55:07	TEMP	Default [CPS]	Default [CPS]
	Dec01.05	14:55:07	TEMP	Default [CPS]	Default [CPS]
	Dec01.05	14:55:17	RES	Default [CPS]	Default [CPS]
	Dec01.05	14:55:17	RES	Default [CPS]	Default [CPS]
	Apr11.02	17:42:07	POR(NEU)	100.000 [PERCENT]	178.00 [CPS]

COMPANY	ANGLO AMERICAN	OTHER SERVICES	NEUTRON
WELL	P002	NEUTRON	ELEMENT
FIELD	N/A	NEUTRON	N/A
MUNICIPALITY	TIMBLER RIDGE		
PROVINCE	BATSWI COLUMBIA		

LOCATION	PROSPECT
SECTION	N/A
TOWNSHIP	N/A
RANGE	N/A
AP NO.	N/A
UNIQUE WELL ID	N/A
PERMANENT DTM	G.L.
LOG MEASURED FROM G.L.	ELEVATION M N/A
DPL MEASURED FROM G.L.	ELEVATION G.L. N/A

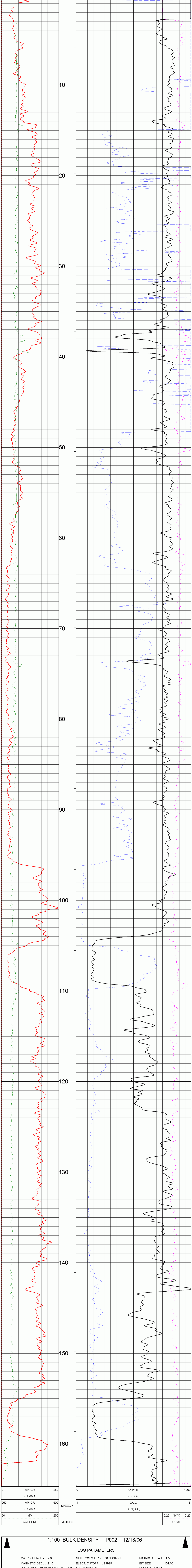
DATE	12/18/06
DEPTH DRILLER	199 16
BIT SIZE	101.60
LOG TOP	0.25
LOG BOTTOM	-184.87
CASING OD	-10.18
CASING BOTTOM	3.048
CASING TYPE	STEEL
BOREHOLE FLUID	WATER
ROOM TEMPERATURE	N/A
MUD RES	N/A
MUD WEIGHT	N/A
WITNESSED BY	N/A
RECORDED BY	N/A
REMARKS 1	90 DEGREE ANGLE HOLE
REMARKS 2	AZIMUTH UNKNOWN

ALL SERVICES PROVIDED SUBJECT TO STANDARD TERMS AND CONDITIONS

1:100 BULK DENSITY P002 12/18/06

LOG PARAMETERS

MATRIX DENSITY : 2.65	NEUTRON MATRIX : SANDSTONE	MATRIX DELTA T : 177
MAGNETIC DECL : 21.6	ELECT. CUTOFF : 99999	BIT SIZE : 101.60
PRESENTATION NAME/DATE = 9239C1.0 12/13/2006		VERSION = 3.64EE



1:100 BULK DENSITY P002 12/18/06

LOG PARAMETERS

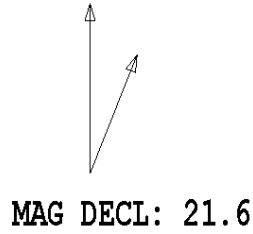
MATRIX DENSITY : 2.65	NEUTRON MATRIX : SANDSTONE	MATRIX DELTA T : 177
MAGNETIC DECL : 21.6	ELECT. CUTOFF : 99999	BIT SIZE : 101.60
PRESENTATION NAME/DATE = 9239C1.0 12/13/2006		VERSION = 3.64EE

TOOL CALIBRATION P002 12/18/06 14:35

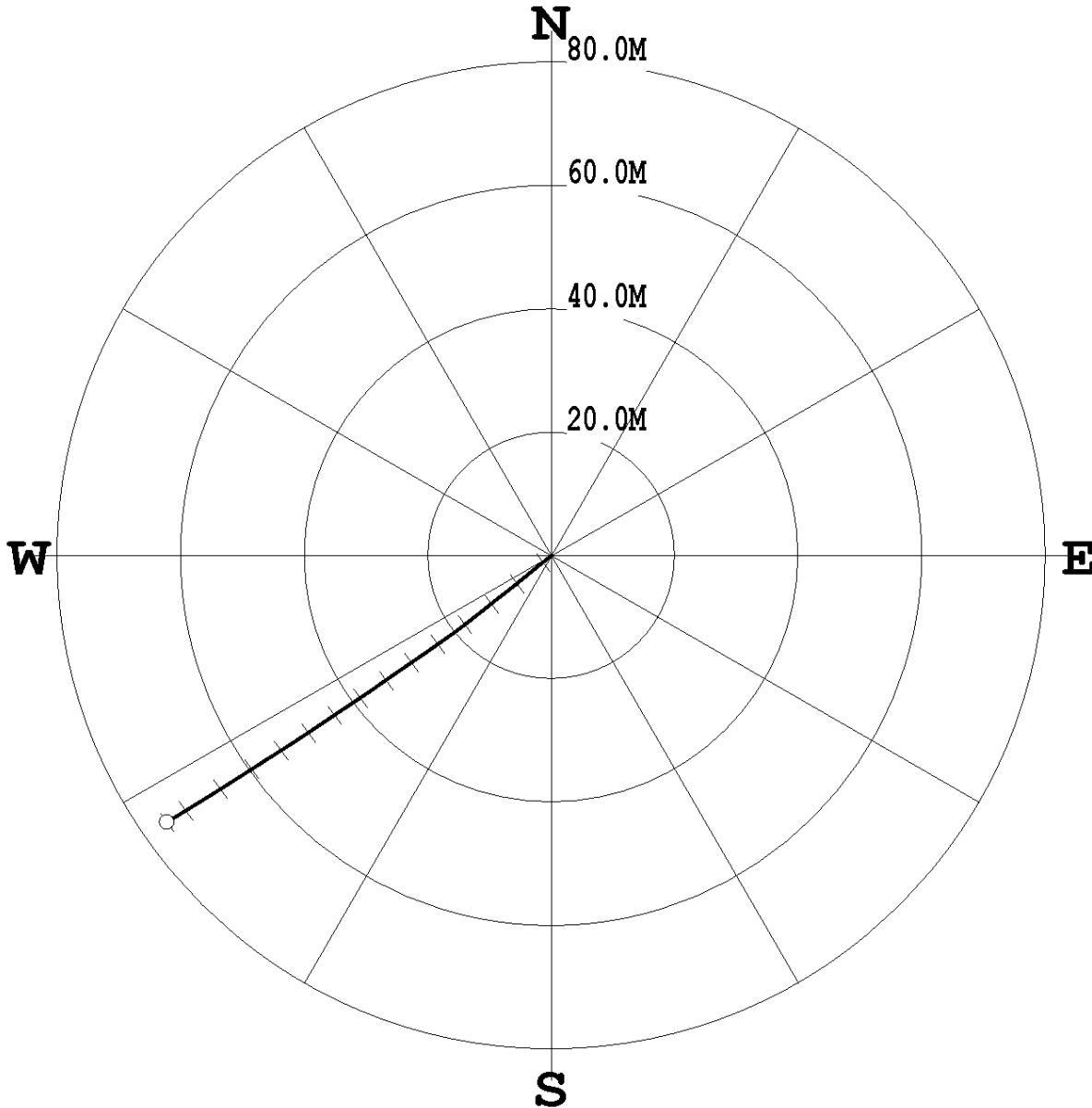
DATE	TIME	SENSOR	STANDARD	RESPONSE
1	Dec13,06 10:48:21	GAMMA	Default [CPS]	286.00 [CPS]
1	Dec13,06 10:48:21	GAMMA	283.000 [API-GR]	5358.00 [CPS]
1	Dec13,06 10:49:11	VOLTAGE	31.850 [MV]	76981.00 [CPS]
1	Dec13,06 10:50:35	VOLTAGE	572.000 [MV]	25725.00 [CPS]
1	Dec13,06 10:50:35	CALIPER	25.400 [MM]	43375.00 [CPS]
1	Dec13,06 10:50:35	CALIPER	203.200 [MM]	6150.00 [CPS]
1	Dec18,06 20:52:31	DEN(LS)	1.000 [G/CC]	5000.00 [CPS]
1	Dec18,06 20:52:31	DEN(LS)	2.383 [G/CC]	6150.00 [CPS]
1	Dec18,06 20:52:31	DEN(SS)	1.000 [G/CC]	10300.00 [CPS]
1	Dec18,06 20:57:29	DEN(SS)	2.383 [G/CC]	3500.00 [CPS]
1	Dec13,06 10:53:14	CALIPERL	76.200 [MM]	108092.90 [CPS]
1	Dec13,06 10:53:14	CALIPERL	254.000 [MM]	314045.19 [CPS]
1	Dec13,06 10:53:55	CURRENT	99.600 [UA]	10840.00 [CPS]
1	Dec13,06 10:53:55	CURRENT	291.000 [UA]	29568.00 [CPS]
1	Dec13,06 10:45:28	F	Default [CPS]	
1	Dec13,06 10:45:28	X	Default [CPS]	

PLAN VIEW COMPU-LOG DEVIATION

CLIENT: ANGLO AMERICAN
LOCATION: N/A
HOLE ID: P002
DATE OF LOG: 12/18/06
PROBE: 9411A 390



SCALE: 10 M/CM
TRUE DEPTH: 145.20 M
AZIMUTH: 235.2
DISTANCE: 75.7 M
+ = 10 M INCR
○ = BOTTOM OF HOLE

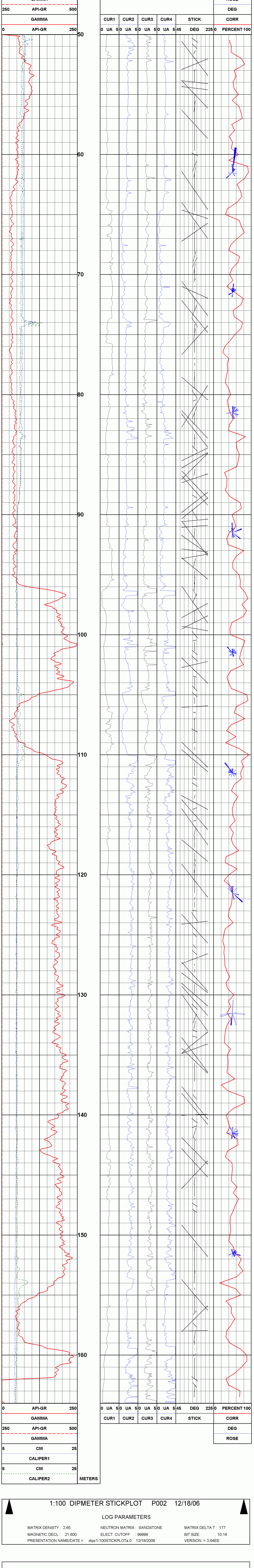


COMPANY	ANGLO AMERICAN	OTHER SERVICES:	DENSITY
WELL	P002	NEUTRON	NEUTRON
FIELD	N/A		
MUNICIPALITY	TUMBLER RIDGE		
PROVINCE	BRITISH COLUMBIA		
LOCATION	PROSPECT		
SECTION	N/A		
TOWNSHIP	N/A		
RANGE	N/A		
API NO.	N/A		
UNIQUE WELL ID.	N/A		
PERMANENT DATUM	S.L.	ELEVATION IN M	N/A
LOG MEASURED FROM	S.L.	ELEVATION OF N/A	
DRL MEASURED FROM	S.L.	ELEVATION OF N/A	
DATE	12/18/06		
DEPTH DRILLER	1:89.16		
BIT SIZE	10.16		
LOG TOP	7.00		
LOG BOTTOM	164.00		
CASING OD	10.16		
CASING BOTTOM	3.048		
CASING TYPE	STEEL		
BORHOLE FLUID	WATER		
RM TEMPERATURE	N/A		
MUD RES	N/A		
MUD WEIGHT	N/A		
WITNESSED BY	N/A		
RECORDED BY	FAOZHECK		
REMARKS 1	80 DEGREE ANGLE HOLE		
REMARKS 2	AZIMUTH UNKNOWN		
ALL SERVICES PROVIDED SUBJECT TO STANDARD TERMS AND CONDITIONS			

1:100 DIPMETER STICKPLOT P002 12/18/06

LOG PARAMETERS

MATRIX DENSITY : 2.65	NEUTRON MATRIX : SANDSTONE	MATRIX DELTA T : 177
MAGNETIC DECL : 21.600	ELECT. CUTOFF : 99999	BIT SIZE : 10.16
PRESENTATION NAME/DATE = dipc1-100STICKPLOTa.0 12/18/2006		VERSION = 3.64EE



1:100 DIPMETER STICKPLOT P002 12/18/06

LOG PARAMETERS

MATRIX DENSITY : 2.65	NEUTRON MATRIX : SANDSTONE	MATRIX DELTA T : 177
MAGNETIC DECL : 21.600	ELECT. CUTOFF : 99999	BIT SIZE : 10.16
PRESENTATION NAME/DATE = dipc1-100STICKPLOTa.0 12/18/2006		VERSION = 3.64EE

TOOL CALIBRATION P002 12/18/06 15:25						
TOOL 9411A TM VERSION 1						
SERIAL NUMBER 390						
DATE	TIME	SENSOR	STANDARD		RESPONSE	
1	Jul27,05 10:45:12	GAMMA	Default	[CPS]	Default	[CPS]
	Jul27,05 10:45:12	GAMMA	Default	[CPS]	Default	[CPS]
2	Aug02,05 09:21:29	VOLTAG	104.800	[MV]	720.00	[CPS]
	Aug02,05 09:21:29	VOLTAG	350.700	[MV]	2360.00	[CPS]
3	Aug02,05 10:37:25	CUR1	4.213	[UA]	7855.00	[CPS]
	Aug02,05 10:37:25	CUR1	0.000	[UA]	80.00	[CPS]
4	Aug02,05 09:27:32	CUR2	4.177	[UA]	7910.00	[CPS]
	Aug02,05 09:27:32	CUR2	0.000	[UA]	105.00	[CPS]
5	Aug02,05 09:24:02	CUR3	4.250	[UA]	7900.00	[CPS]
	Aug02,05 09:24:02	CUR3	0.000	[UA]	140.00	[CPS]
6	Aug02,05 09:26:09	CUR4	4.270	[UA]	7860.00	[CPS]
	Aug02,05 09:26:09	CUR4	0.000	[UA]	180.00	[CPS]
7	Dec18,06	CALIPER1	7.620	[INCH]	10039.00	[CPS]
	Dec18,06	CALIPER	25.400	[INCH]	3548.00	[CPS]

COMPANY	ANGLO AMERICAN	OTHER SERVICES:
WELL	P003	NEUTRON
FIELD	PROSPECT	BIPHASE
COUNTRY	CANADA	

STATE	ALBERTA
LOCATION	TUMBLER RIDGE
SECTION	N/A
TOWNSHIP	N/A
RANGE	N/A
API NO.	N/A
UNIQUE WELL ID.	N/A

PERMANENT DATUM	GL	ELEVATION KB N/A
LOG MEASURED FROM	GL	ELEVATION DR N/A
DRL MEASURED FROM	GL	ELEVATION GL N/A

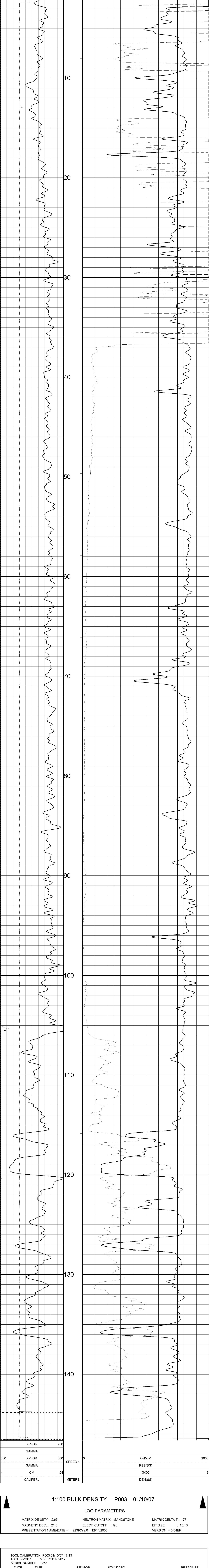
DATE	01/10/07
DEPTH DRILLER	150.88
BIT SIZE	10.16
LOG TOP	0.22
LOG BOTTOM	146.82
CASING OD	10.16
CASING BOTTOM	3.048
CASING TYPE	STEEL
BOREHOLE FLUID	WATER
BOREHOLE TEMPERATURE	N/A
MUD RES	N/A
MUD WEIGHT	N/A
WITNESSED BY	N/A
RECORDED BY	R. RAJAZ
REMARKS 1	80 DEGREE ANGLE HOLE
REMARKS 2	BOREHOLE CLEANED TWICE

ALL SERVICES PROVIDED SUBJECT TO STANDARD TERMS AND CONDITIONS

1:100 BULK DENSITY P003 01/10/07

LOG PARAMETERS

MATRIX DENSITY : 2.65 NEUTRON MATRIX : SANDSTONE MATRIX DELTA T : 177
 MAGNETIC DECL : 21.6 ELECT. CUTOFF : GL BIT SIZE : 10.16
 PRESENTATION NAME/DATE = 9239Ccs.0 12/14/2006 VERSION = 3.64EK



1:100 BULK DENSITY P003 01/10/07

LOG PARAMETERS

MATRIX DENSITY : 2.65 NEUTRON MATRIX : SANDSTONE MATRIX DELTA T : 177
 MAGNETIC DECL : 21.6 ELECT. CUTOFF : GL BIT SIZE : 10.16
 PRESENTATION NAME/DATE = 9239Ccs.0 12/14/2006 VERSION = 3.64EK

DATE	TIME	SENSOR	STANDARD	RESPONSE
1	Jan13,07 09:49:35	GAMMA	120.000 [API-GR]	104.00 [CPS]
1	Jan13,07 09:49:35	VOLTAGE	295.000 [MV]	275.00 [CPS]
2	Oct29,06 14:51:37	VOLTAGE	572.000 [MV]	76681.00 [CPS]
2	Oct29,06 14:53:08	CALIPER	2.540 [CM]	25725.00 [CPS]
3	Oct29,06 14:53:08	CALIPER	20.320 [CM]	433775.00 [CPS]
4	Jan13,07 08:59:01	DEN(LS)	1.000 [G/CC]	7954.00 [CPS]
4	Jan13,07 09:01:22	DEN(LS)	2.383 [G/CC]	1956.20 [CPS]
5	Jan13,07 09:21:19	DEN(LS)	1.000 [G/CC]	55714.50 [CPS]
5	Jan13,07 09:32:46	DEN(SS)	2.383 [G/CC]	17737.30 [CPS]
5	Jan08,07 12:54:09	DEN(SS)	1.000 [G/CC]	57286.30 [CPS]
6	Jan13,07 09:57:07	CALIPERL	7.620 [CM]	145789.00 [CPS]
7	Jan13,07 09:57:07	CURRENT	25.400 [UA]	989989.00 [CPS]
7	Oct29,06 14:54:27	CURRENT	291.000 [UA]	29568.00 [CPS]
8	Oct29,06 14:54:32	F	Default [CPS]	
8	Oct29,06 14:49:46	X	Default [CPS]	

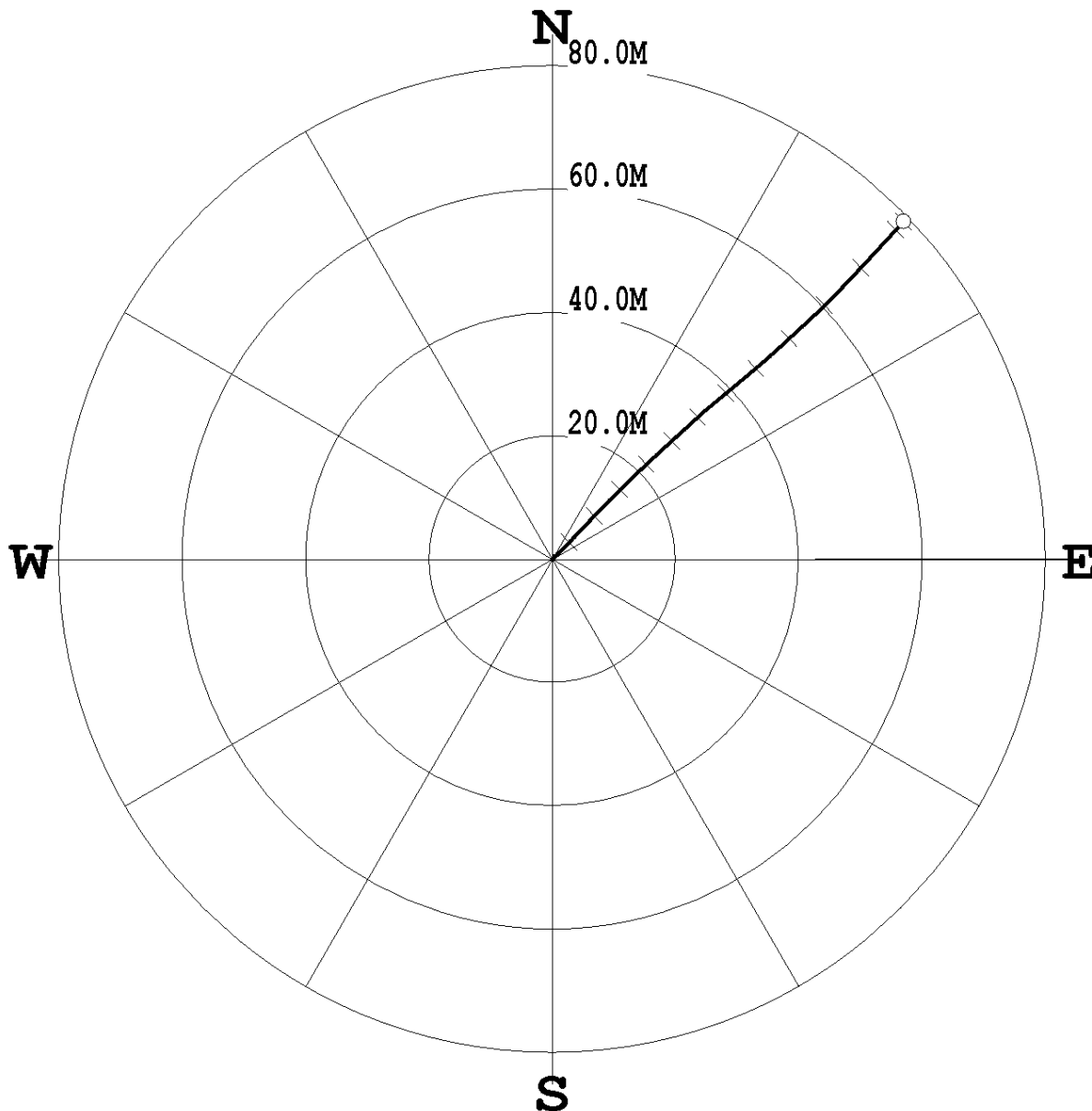
PLAN VIEW COMPU-LOG DEVIATION

CLIENT: ANGLO AMERICAN
LOCATION: PROSPECT
HOLE ID: P003
DATE OF LOG: 01/10/07
PROBE: 9057A 1074



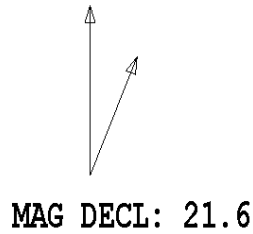
MAG DECL: 21.6

SCALE: 10 M/CM
TRUE DEPTH: 122.29 M
AZIMUTH: 46.1
DISTANCE: 79.0 M
+ = 10 M INCR
○ = BOTTOM OF HOLE

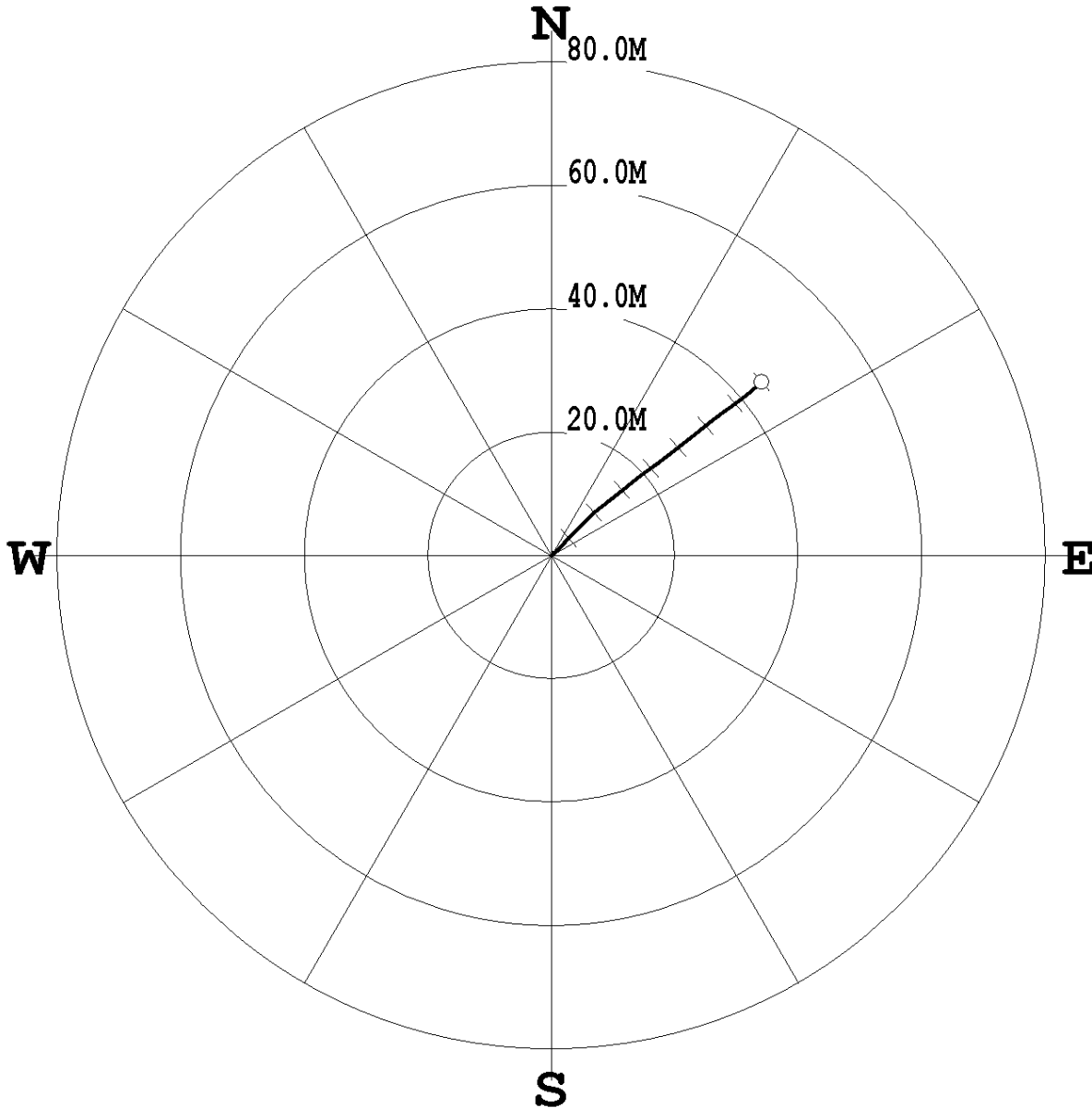


PLAN VIEW COMPU-LOG DEVIATION

CLIENT: ANGLO AMERICAN
LOCATION: N/A
HOLE ID: P003
DATE OF LOG: 12/18/06
PROBE: 9057A 1067



SCALE: 10 M/CM
TRUE DEPTH: 78.87 M
AZIMUTH: 50.4
DISTANCE: 44.1 M
+ = 10 M INCR
○ = BOTTOM OF HOLE



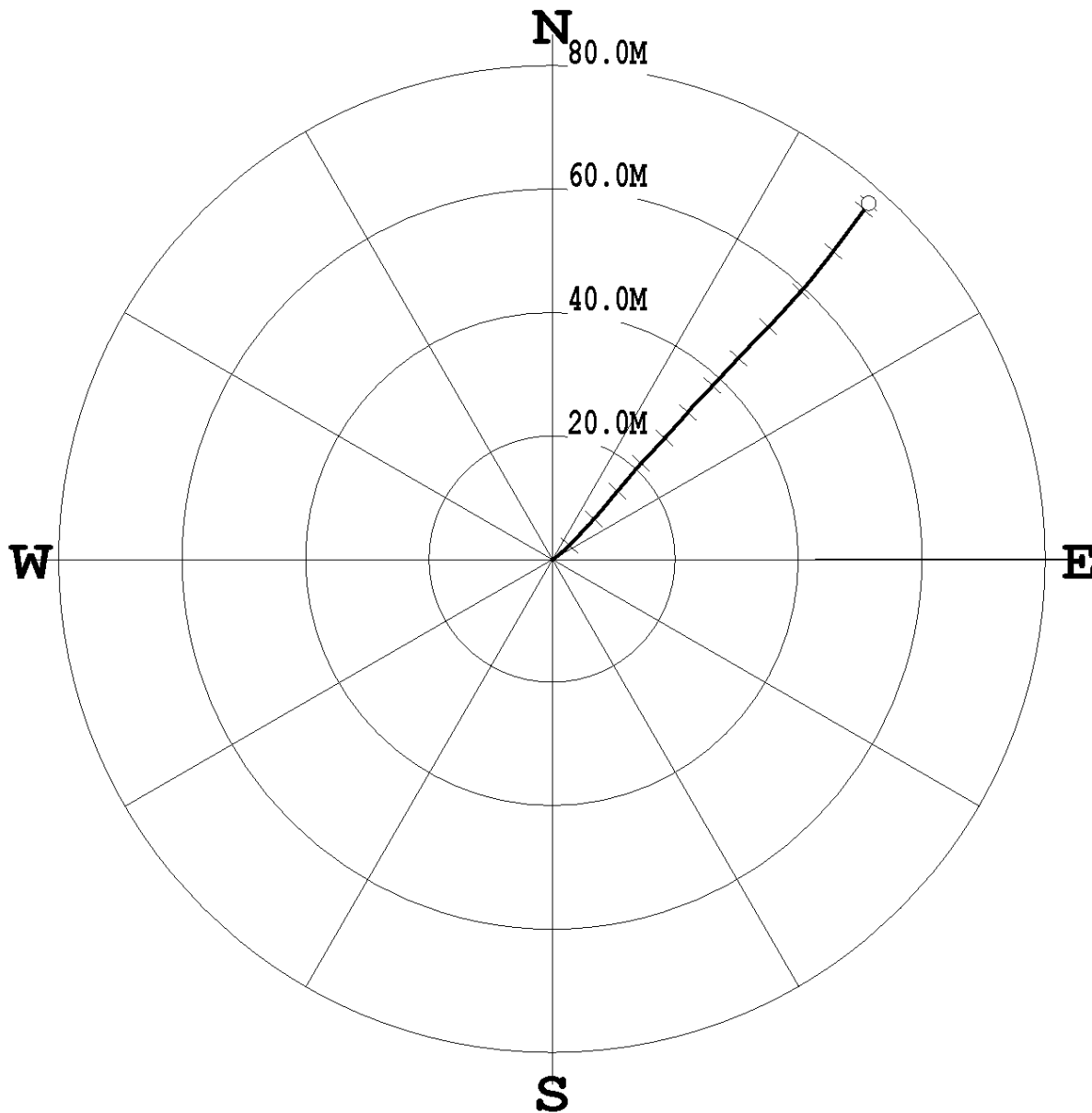
PLAN VIEW COMPU-LOG DEVIATION

CLIENT: ANGLO AMERICAN
LOCATION: PROSPECT
HOLE ID: P003
DATE OF LOG: 01/10/07
PROBE: 9411A 380



MAG DECL: 21.6

SCALE: 10 M/CM
TRUE DEPTH: 121.51 M
AZIMUTH: 41.7
DISTANCE: 77.1 M
+ = 10 M INCR
○ = BOTTOM OF HOLE



COMPANY	ANGLO AMERICAN	OTHER SERVICES	NEUTRON DENSITY
WELL	P003		
FIELD	PROSPECT		
COUNTRY	CANADA		
STATE	BRITISH COLUMBIA		
LOCATION	TUMBLER RIDGE		

SECTION	N/A
TOWNSHIP	N/A
RANGE	N/A
API NO.	N/A
UNIQUE WELL ID.	N/A

PERMANENT DATUM	GL	ELEVATION KB N/A
LOG MEASURED FROM	GL	ELEVATION DI N/A
DLL MEASURED FROM	GL	ELEVATION GL N/A

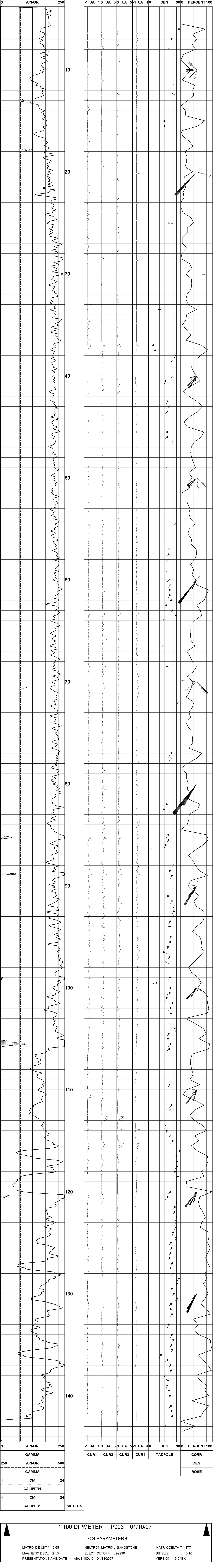
DATE	01/10/07
DEPTH DRILLER	150.88
BIT SIZE	10.18
LOG TOP	3.78
LOG BOTTOM	144.50
CASING OD	10.18
CASING BOTTOM	3.048
CASING TYPE	STEEL
BORHOLE FLUID	WATER
RM TEMPERATURE	N/A
MUD RES	N/A
MUD WEIGHT	N/A
WITNESSED BY	N/A
RECORDED BY	R. RACZ
REMARKS 1	* 10.16 CM BIT TO TD
REMARKS 2	50 DEGREE ANGLE HOLE

ALL SERVICES PROVIDED SUBJECT TO STANDARD TERMS AND CONDITIONS

1:100 DIPMETER P003 01/10/07

LOG PARAMETERS

MATRIX DENSITY : 2.85	NEUTRON MATRIX : SANDSTONE	MATRIX DELTA T : 177
MAGNETIC DECL : 21.6	ELECT. CUTOFF : 99999	BIT SIZE : 10.16
PRESENTATION NAME/DATE = dipct-100a.0 01/14/2007		VERSION = 3.64EK



1:100 DIPMETER P003 01/10/07

LOG PARAMETERS

MATRIX DENSITY : 2.85	NEUTRON MATRIX : SANDSTONE	MATRIX DELTA T : 177
MAGNETIC DECL : 21.6	ELECT. CUTOFF : 99999	BIT SIZE : 10.16
PRESENTATION NAME/DATE = dipct-100a.0 01/14/2007		VERSION = 3.64EK

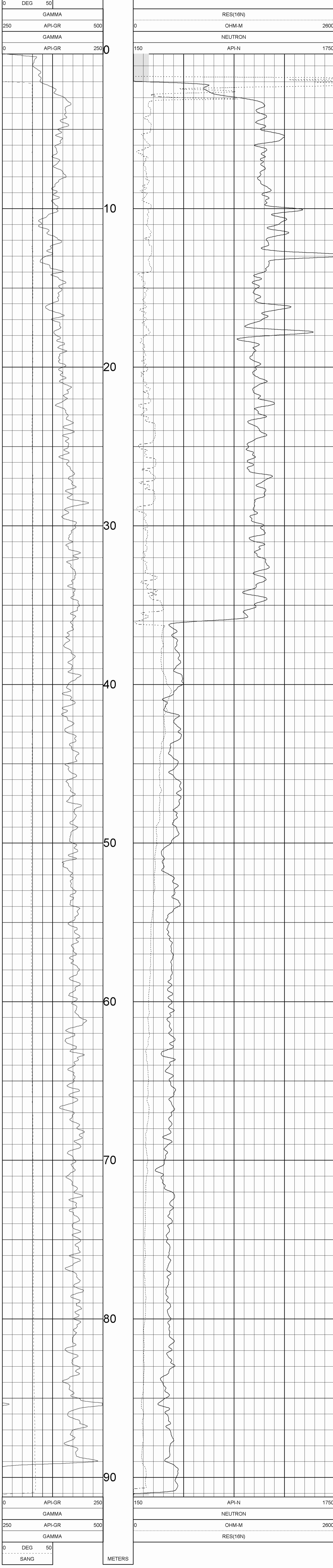
DATE	TIME	SENSOR	STANDARD	RESPONSE
1	Jan15,07 01:06:31	GAMMA	Default [CPS]	Default [CPS]
1	Jan15,07 01:06:31	GAMMA	410.000 [API-GR]	380.00 [CPS]
2	Dec06,06 06:51:33	VOLTAGE	Default [CPS]	Default [CPS]
2	Dec06,06 06:51:33	VOLTAGE	341.000 [MV]	1715.00 [CPS]
3	Dec06,06 08:06:02	CUR1	Default [CPS]	Default [CPS]
3	Dec06,06 08:06:02	CUR1	2.135 [UA]	19950.00 [CPS]
4	Dec06,06 08:06:06	CUR2	Default [CPS]	Default [CPS]
4	Dec06,06 08:06:06	CUR2	2.135 [UA]	12850.00 [CPS]
5	Dec06,06 08:06:10	CUR3	Default [CPS]	Default [CPS]
5	Dec06,06 08:06:10	CUR3	2.135 [UA]	19285.00 [CPS]
6	Dec06,06 08:06:14	CUR4	Default [CPS]	Default [CPS]
6	Dec06,06 08:06:14	CUR4	2.135 [UA]	18400.00 [CPS]
7	Jan15,07 01:07:58	CALIPER	7.620 [INCH]	7566.08 [CPS]
7	Jan15,07 01:07:58	CALIPER	17.780 [INCH]	15561.82 [CPS]

COMPANY	ANGLO AMERICAN	OTHER SERVICES:	
WELL	P003	DENSITY	
FIELD	N/A	DIPMETER	
MUNICIPALITY	TUMBLER RIDGE		
PROVINCE	BRITISH COLUMBIA		
LOCATION	PROSPECT		
SECTION	N/A		
TOWNSHIP	N/A		
RANGE	N/A		
API NO.	N/A		
UNIQUE WELL ID.	N/A		
PERMANENT DATUM	G.L.	ELEVATION KB N/A	
LOG MEASURED FROM	G.L.	ELEVATION DF N/A	
DRL MEASURED FROM	G.L.	ELEVATION QL N/A	
DATE	12/18/06		
DEPTH DRILLER	150.88		
BIT SIZE	10.16		
LOG TOP	0.23		
LOG BOTTOM	91.20		
CASING OD	10.16		
CASING BOTTOM	3.048		
CASING TYPE	STEEL		
BOREHOLE FLUID	WATER		
RH TEMPERATURE	N/A		
MUD RES	N/A		
MUD WEIGHT	N/A		
WITNESSED BY	N/A		
RECORDED BY	FAZCHECK		
REMARKS 1	90 DEGREE ANGLE HOLE		
REMARKS 2	AZIMUTH UNKNOWN		

1:100 NEUTRON P003 12/18/06

LOG PARAMETERS

MATRIX DENSITY : 2.65 NEUTRON MATRIX : SANDSTONE MATRIX DELTA T : 177
 MAGNETIC DECL : 21.6 ELECT. CUTOFF : 99999 BIT SIZE : 10.16
 PRESENTATION NAME/DATE = 9057A.0 12/14/2006 VERSION = 3.64EF



1:100 NEUTRON P003 12/18/06

LOG PARAMETERS

MATRIX DENSITY : 2.65 NEUTRON MATRIX : SANDSTONE MATRIX DELTA T : 177
 MAGNETIC DECL : 21.6 ELECT. CUTOFF : 99999 BIT SIZE : 10.16
 PRESENTATION NAME/DATE = 9057A.0 12/14/2006 VERSION = 3.64EF

DATE	TIME	SENSOR	STANDARD	RESPONSE
1	May22,06 08:03:18	GAMMA	0.000 [API-GR]	1.00 [CPS]
1	May22,06 08:03:18	GAMMA	325.000 [API-GR]	325.00 [CPS]
2	Oct24,05 14:50:54	NEUTRON	Default [CPS]	Default [CPS]
2	Dec01,05 14:21:19	NEUTRON	152.000 [API-N]	167.00 [CPS]
3	Dec01,05 14:21:19	SP	Default [CPS]	Default [CPS]
3	Dec01,05 14:21:19	SP	Default [CPS]	Default [CPS]
4	Dec01,05 14:54:52	RES(16N)	Default [CPS]	Default [CPS]
4	Dec01,05 14:54:52	RES(16N)	Default [CPS]	Default [CPS]
5	Dec01,05 14:55:00	RES(64N)	Default [CPS]	Default [CPS]
5	Dec01,05 14:55:00	RES(64N)	Default [CPS]	Default [CPS]
6	Dec01,05 14:55:07	TEMP	Default [CPS]	Default [CPS]
6	Dec01,05 14:55:07	TEMP	Default [CPS]	Default [CPS]
7	Dec01,05 14:55:17	RES	Default [CPS]	Default [CPS]
7	Dec01,05 14:55:17	RES	Default [CPS]	Default [CPS]
8	Apr11,02 17:42:07	POR(NEU)	100.000 [PERCENT]	178.00 [CPS]

TOOL CALIBRATION P003 12/18/06 18:16
 SERIAL 9057A TM VERSION 2
 SERIAL NUMBER 1067

COMPANY	ANGLO AMERICAN	OTHER SERVICES	NEUTRON
WELL	P003	PROSPECT	BENSITY
COUNTRY	CANADA	STATE	
LOCATION	TUMBLER RIDGE		

SECTION	N/A
TOWNSHIP	N/A
RANGE	N/A
API NO.	
UNIQUE WELL ID.	N/A

PERMANENT DATUM	GL	ELEVATION KB N/A
LOG MEASURED FROM	GL	ELEVATION DI N/A
DLL MEASURED FROM	GL	ELEVATION GL N/A

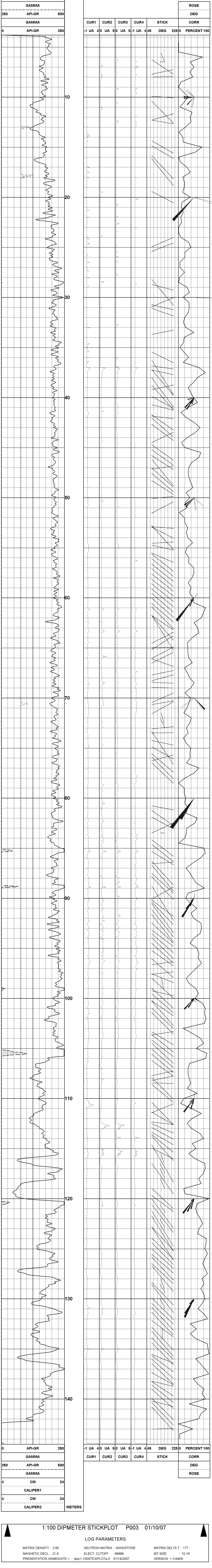
DATE	01/10/07
DEPTH DRILLER	150.88
BIT SIZE	10.16
LOG TOP	3.78
LOG BOTTOM	144.50
CASING OD	10.16
CASING BOTTOM	3.048
CASING TYPE	STEEL
BORHOLE FLUID	WATER
RM TEMPERATURE	N/A
MUD RES	N/A
MUD WEIGHT	N/A
WITNESSED BY	N/A
RECORDED BY	R. RACZ
REMARKS 1	4" 10.16 CM BIT TO TD
REMARKS 2	50 DEGREE ANGLE HOLE

ALL SERVICES PROVIDED SUBJECT TO STANDARD TERMS AND CONDITIONS

1:100 DIPMETER STICKPLOT P003 01/10/07

LOG PARAMETERS

MATRIX DENSITY : 2.85	NEUTRON MATRIX : SANDSTONE	MATRIX DELTA T : 177
MAGNETIC DECL : 21.6	ELECT. CUTOFF : 99999	BIT SIZE : 10.16
PRESENTATION NAME/DATE = dipc1-100STICKPLOTa.0 01/14/2007		VERSION = 3.64EK



CALIPER2	4	CM	24
CALIPER1	4	CM	24
GAMMA	250	API-GR	500
GAMMA	0	API-GR	250

CUR1	-1 UA	CUR2	40 UA	CUR3	50 UA	CUR4	5-1 UA	STICK	445 DEG	CORR	2250 PERCENT 100
CUR1		CUR2		CUR3		CUR4		STICK		CORR	
										DEG	ROSE

1:100 DIPMETER STICKPLOT P003 01/10/07

LOG PARAMETERS

MATRIX DENSITY : 2.85	NEUTRON MATRIX : SANDSTONE	MATRIX DELTA T : 177
MAGNETIC DECL : 21.6	ELECT. CUTOFF : 99999	BIT SIZE : 10.16
PRESENTATION NAME/DATE = dipc1-100STICKPLOTa.0 01/14/2007		VERSION = 3.64EK

TOOL CALIBRATION P003 01/10/07 17:58			
TOOL 9411A TM VERSION 1			
SERIAL NUMBER 380			
DATE	TIME	SENSOR	STANDARD

1	Jan15,07	01:06:31	GAMMA	Default	[CPS]	Default	[CPS]
1	Jan15,07	01:06:31	GAMMA	410.000	[API-GR]	380.00	[CPS]
2	Dec06,06	06:51:33	VOLTAGE	Default	[CPS]	Default	[CPS]
2	Dec06,06	06:51:33	VOLTAGE	341.000	[MV]	1715.00	[CPS]
3	Dec06,06	08:06:02	CUR1	Default	[CPS]	Default	[CPS]
3	Dec06,06	08:06:02	CUR1	2.135	[UA]	19950.00	[CPS]
4	Dec06,06	08:06:06	CUR2	Default	[CPS]	Default	[CPS]
4	Dec06,06	08:06:06	CUR2	2.135	[UA]	12850.00	[CPS]
5	Dec06,06	08:06:10	CUR3	Default	[CPS]	Default	[CPS]
5	Dec06,06	08:06:10	CUR3	2.135	[UA]	19285.00	[CPS]
6	Dec06,06	08:06:14	CUR4	Default	[CPS]	Default	[CPS]
6	Dec06,06	08:06:14	CUR4	2.135	[UA]	18400.00	[CPS]
7	Jan15,07	01:07:58	CALIPER	7.620	[INCH]	7566.08	[CPS]
7	Jan15,07	01:07:58	CALIPER	17.780	[INCH]	15561.82	[CPS]

Century-geo.com
 COMPANY: ANGLO AMERICAN
 WELL: P004
 FIELD: PROSPECT
 COUNTY: TAMBLER RIDGE
 STATE: BRITISH COLUMBIA
 LOCATION: TAMBLER RIDGE
 SECTION: N/A
 TOWNSHIP: N/A
 RANGE: N/A
 APNO: N/A
 UNIQUE WELL ID: N/A

OTHER SERVICES:
 NEUTRON
 IPM/EI

PERMANENT DTDUM: GL
 LOG MEASURED FROM: GL
 DRL MEASURED FROM: GL
 ELEVATION KB: N/A
 ELEVATION DE: N/A
 ELEVATION GL: N/A

DATE: 01/11/07
 DEPTH DRILLER: 157.64
 BIT SIZE: 10.16
 LOG TOP: 0.25
 LOG BOTTOM: 165.21
 CASING OD: 10.16
 CASING BOTTOM: 3.046
 CASING TYPE: STEEL
 BOREHOLE FLUID: WATER
 BOREHOLE TEMPERATURE: N/A
 MUD RES: N/A
 MUD WEIGHT: N/A
 WITNESSED BY: R. RACZ
 RECORDED BY: 4" (10.16 CM) BIT TO TD
 REMARKS 1: VERTICAL WELL
 REMARKS 2: ALL SERVICES PROVIDED SUBJECT TO STANDARD TERMS AND CONDITIONS

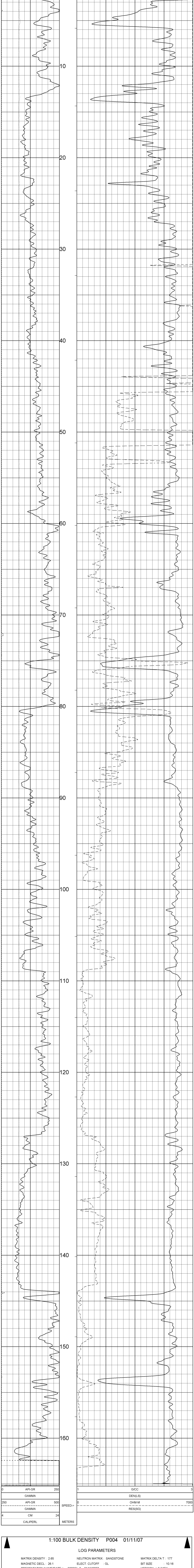
LOG TOP: 0.25
 LOG BOTTOM: 165.21
 CASING OD: 10.16
 CASING BOTTOM: 3.046
 CASING TYPE: STEEL
 BOREHOLE FLUID: WATER
 BOREHOLE TEMPERATURE: N/A
 MUD RES: N/A
 MUD WEIGHT: N/A
 WITNESSED BY: R. RACZ
 RECORDED BY: 4" (10.16 CM) BIT TO TD
 REMARKS 1: VERTICAL WELL
 REMARKS 2: ALL SERVICES PROVIDED SUBJECT TO STANDARD TERMS AND CONDITIONS

DATE: 01/11/07
 DEPTH DRILLER: 157.64
 BIT SIZE: 10.16
 LOG TOP: 0.25
 LOG BOTTOM: 165.21
 CASING OD: 10.16
 CASING BOTTOM: 3.046
 CASING TYPE: STEEL
 BOREHOLE FLUID: WATER
 BOREHOLE TEMPERATURE: N/A
 MUD RES: N/A
 MUD WEIGHT: N/A
 WITNESSED BY: R. RACZ
 RECORDED BY: 4" (10.16 CM) BIT TO TD
 REMARKS 1: VERTICAL WELL
 REMARKS 2: ALL SERVICES PROVIDED SUBJECT TO STANDARD TERMS AND CONDITIONS

ALL SERVICES PROVIDED SUBJECT TO STANDARD TERMS AND CONDITIONS

1:100 BULK DENSITY P004 01/11/07
 LOG PARAMETERS

MATRIX DENSITY : 2.65 NEUTRON MATRIX : SANDSTONE MATRIX DELTA T : 177
 MAGNETIC DECL : 26.1 ELECT. CUTOFF : GL BIT SIZE : 10.16
 PRESENTATION NAME/DATE = 9239C1s.0 01/16/2007 VERSION = 3.64EK



1:100 BULK DENSITY P004 01/11/07
 LOG PARAMETERS

MATRIX DENSITY : 2.65 NEUTRON MATRIX : SANDSTONE MATRIX DELTA T : 177
 MAGNETIC DECL : 26.1 ELECT. CUTOFF : GL BIT SIZE : 10.16
 PRESENTATION NAME/DATE = 9239C1s.0 01/16/2007 VERSION = 3.64EK

TOOL CALIBRATION P004 01/11/07 13:34
 TOOL 9239C1 TM VERSION 2017
 SERIAL NUMBER 1268

DATE	TIME	SENSOR	STANDARD	RESPONSE
1	Jan13,07 12:37:15	GAMMA	120,000 [API-GR]	89.00 [CPS]
1	Jan13,07 12:37:15	VOLTAGE	295,000 [MV]	245.00 [CPS]
2	Oct29,06 14:51:37	VOLTAGE	572,000 [MV]	76681.00 [CPS]
2	Oct29,06 14:53:08	CALIPER	2,340 [CM]	25725.00 [CPS]
3	Oct29,06 14:53:08	CALIPER	20,320 [CM]	433775.00 [CPS]
3	Jan13,07 10:56:53	DEN(LS)	1,000 [G/CC]	27954.00 [CPS]
4	Jan13,07 10:48:15	DEN(LS)	2,383 [G/CC]	2456.20 [CPS]
4	Jan13,07 12:03:02	DEN(LS)	1,000 [G/CC]	53714.50 [CPS]
5	Jan13,07 11:14:46	DEN(SS)	2,383 [G/CC]	21537.30 [CPS]
5	Jan08,07 12:54:09	DEN(SS)	1,000 [G/CC]	57286.30 [CPS]
6	Jan13,07 12:11:47	CALIPERL	7,620 [CM]	145789.00 [CPS]
7	Jan13,07 12:11:47	CALIPERL	25,400 [UA]	959889.00 [CPS]
7	Oct29,06 14:54:27	CURRENT	291,000 [UA]	25668.00 [CPS]
8	Oct29,06 14:54:32	F	Default [CPS]	
8	Oct29,06 14:49:46	X	Default [CPS]	

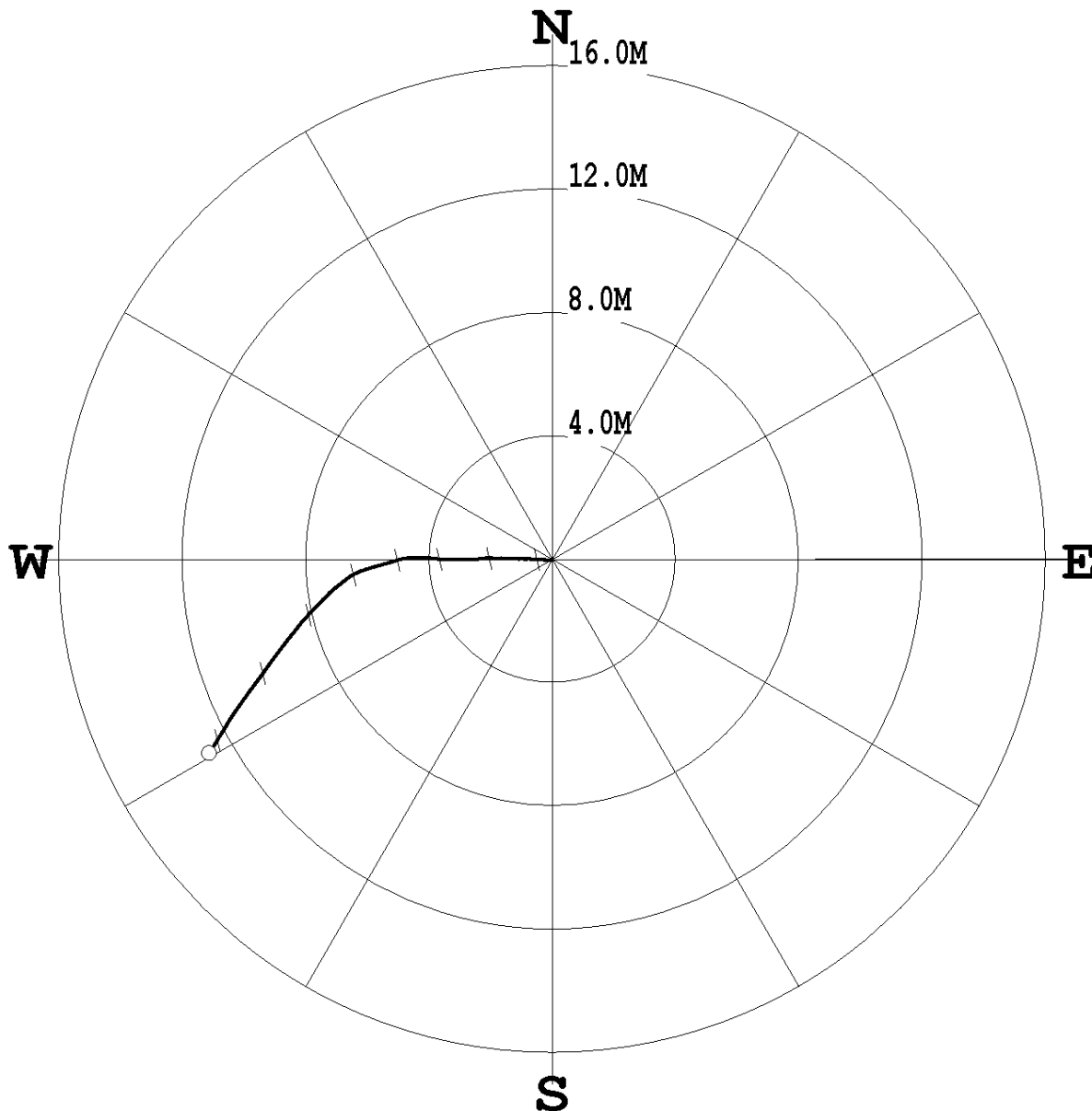
PLAN VIEW COMPU-LOG DEVIATION

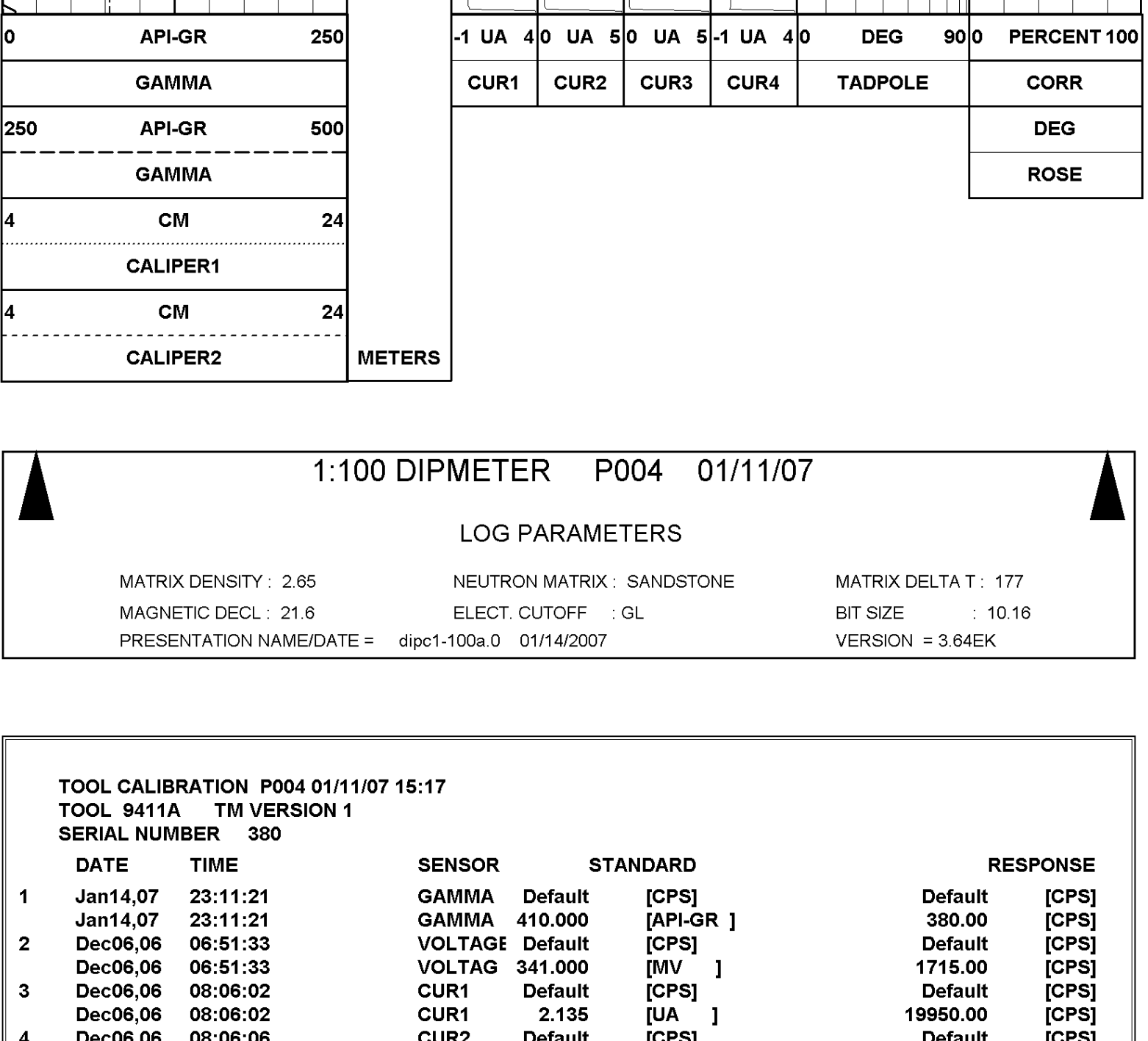
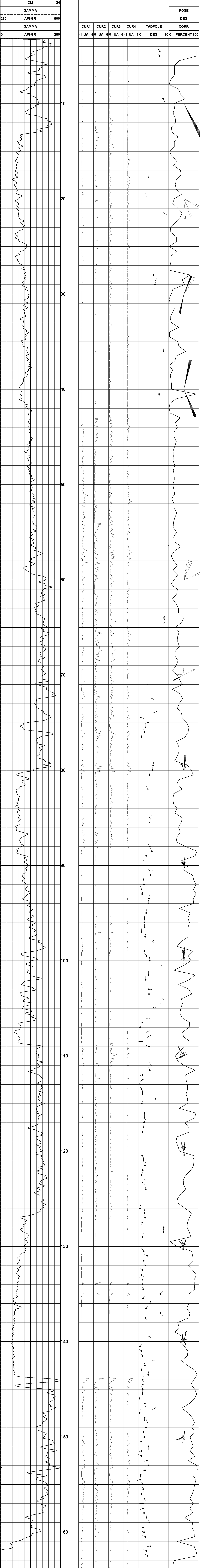
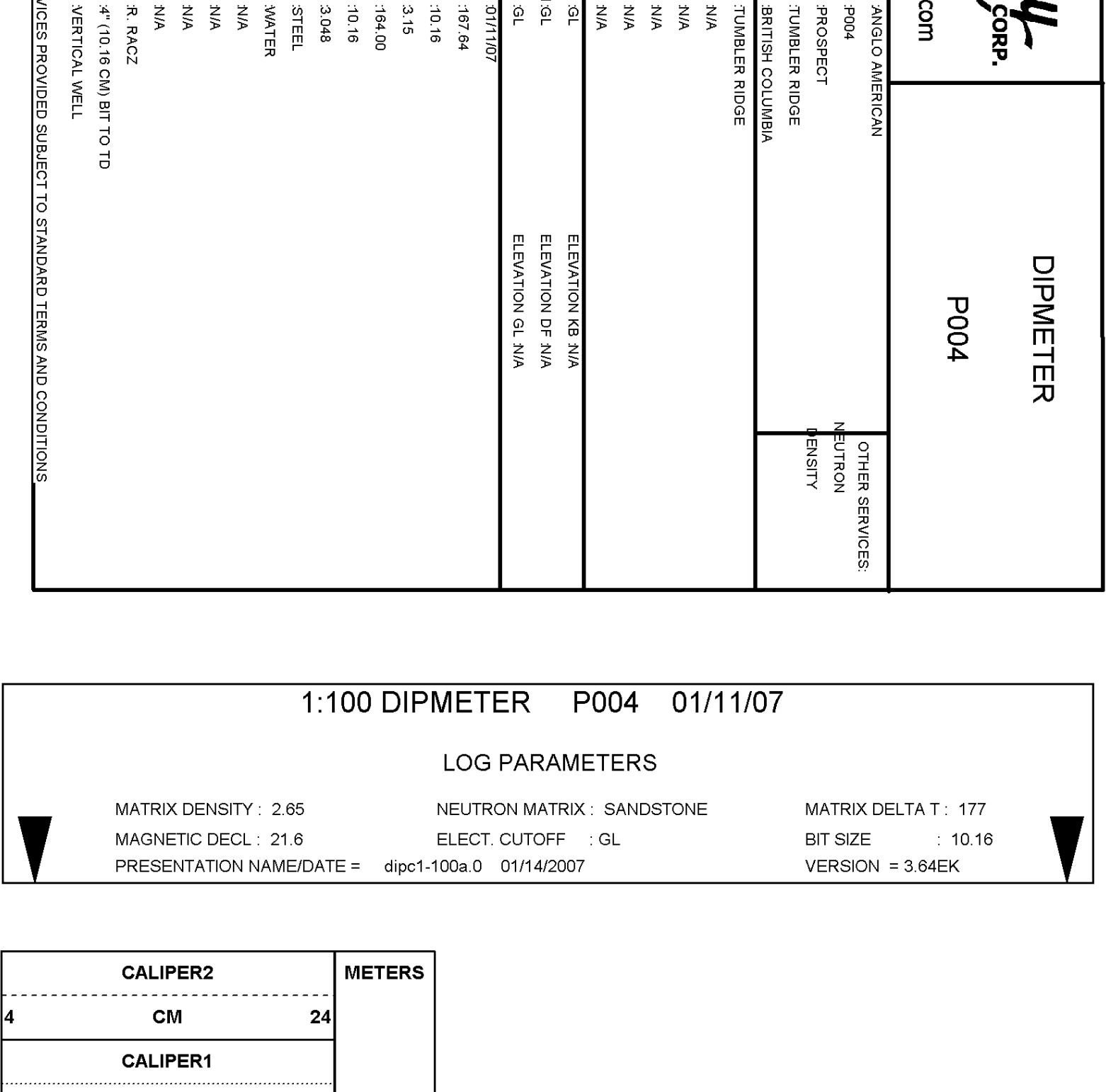
CLIENT: ANGLO AMERICAN
LOCATION: PROSPECT
HOLE ID: P004
DATE OF LOG: 01/11/07
PROBE: 9411A 380



MAG DECL: 21.6

SCALE: 2 M/CM
TRUE DEPTH: 163.83 M
AZIMUTH: 240.5
DISTANCE: 12.8 M
+ = 20 M INCR
○ = BOTTOM OF HOLE





TOOL CALIBRATION P004 01/11/07 15:17
TOOL 9411A TM VERSION 1
SERIAL NUMBER 380

DATE	TIME	SENSOR	STANDARD	RESPONSE
1	Jan14,07 23:11:21	GAMMA	Default [CPS]	Default [CPS]
1	Jan14,07 23:11:21	VOLTAGE	Default [CPS]	Default [CPS]
2	Dec06,06 06:51:33	VOLTAG	341.000 [MV]	1715.00 [CPS]
3	Dec06,06 08:06:02	CUR1	Default [CPS]	Default [CPS]
3	Dec06,06 08:06:02	CUR2	2.135 [UA]	19950.00 [CPS]
4	Dec06,06 08:06:06	CUR2	Default [CPS]	Default [CPS]
4	Dec06,06 08:06:06	CUR3	2.135 [UA]	12850.00 [CPS]
5	Dec06,06 08:06:10	CUR3	Default [CPS]	Default [CPS]
5	Dec06,06 08:06:10	CUR4	2.135 [UA]	19285.00 [CPS]
6	Dec06,06 08:06:14	CUR4	Default [CPS]	Default [CPS]
6	Dec06,06 08:06:14	CALIPER	2.135 [INCH]	18400.00 [CPS]
7	Jan14,07 21:38:11	CALIPER	7.820 [INCH]	7566.08 [CPS]
7	Jan14,07 21:38:11	CALIPER	17.780 [INCH]	15561.82 [CPS]

COMPANY	ANGLO AMERICAN	OTHER SERVICES	
WELL	P004	NEUTRON	
FIELD	PROSPECT	DENSITY	
COUNTY	TUMBLER RIDGE		
STATE	BATCHELOR		

LOCATION	TUMBLER RIDGE
SECTION	N/A
TOWNSHIP	N/A
RANGE	N/A
APNO.	N/A
UNIQUE WELL ID.	N/A

PERMANENT ID	GL	ELEVATION M	N/A
LOG MEASURED FROM	GL	ELEVATION OF N/A	
DEL. MEASURED FROM	GL	ELEVATION GL	N/A

DATE	01/11/07
DEPTH DRILLER	157.74
BIT SIZE	10.16
LOG TOP	3.15
LOG BOTTOM	-184.00
CASING OD	10.16
CASING BOTTOM	3.048

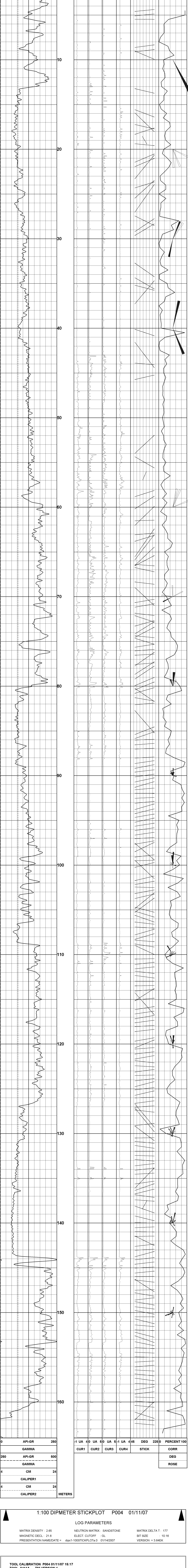
CASING TYPE	STEEL
BORING FLUID	WATER
RAT TEMPERATURE	N/A
MUD RES	N/A
MUD WEIGHT	N/A
WITNESSED BY	N/A
RECORDED BY	R. RACZ
REMARKS 1	4" (10.16 CM) BIT TO TD
REMARKS 2	VERTICAL WELL

ALL SERVICES PROVIDED SUBJECT TO STANDARD TERMS AND CONDITIONS.

1:100 DIPMETER STICKPLOT P004 01/11/07

LOG PARAMETERS

MATRIX DENSITY : 2.65	NEUTRON MATRIX : SANDSTONE	MATRIX DELTA T : 177
MAGNETIC DECL : 21.6	ELECT. CUTOFF : GL	BIT SIZE : 10.16
PRESENTATION NAME/DATE = dipc1-100STICKPLOTa.0	01/11/2007	VERSION = 3.64EK



1:100 DIPMETER STICKPLOT P004 01/11/07

LOG PARAMETERS

MATRIX DENSITY : 2.65	NEUTRON MATRIX : SANDSTONE	MATRIX DELTA T : 177
MAGNETIC DECL : 21.6	ELECT. CUTOFF : GL	BIT SIZE : 10.16
PRESENTATION NAME/DATE = dipc1-100STICKPLOTa.0	01/11/2007	VERSION = 3.64EK

TOOL CALIBRATION P004 01/11/07 15:17

TOOL 9411A	TM VERSION 1
SERIAL NUMBER 380	

DATE	TIME	SENSOR	STANDARD	RESPONSE
1	Jan14,07 23:11:21	GAMMA	Default [CPS]	Default [CPS]
1	Jan14,07 23:11:21	GAMMA	410.000 [API-GR]	380.00 [CPS]
2	Dec06,06 06:51:33	VOLTAGE	Default [MV]	Default [CPS]
2	Dec06,06 06:51:33	VOLTAGE	341.000 [CPS]	1715.00 [CPS]
3	Dec06,06 08:06:02	CUR1	Default [CPS]	Default [CPS]
3	Dec06,06 08:06:02	CUR1	2.135 [UA]	19950.00 [CPS]
4	Dec06,06 08:06:06	CUR2	Default [CPS]	Default [CPS]
4	Dec06,06 08:06:06	CUR2	2.135 [UA]	12850.00 [CPS]
5	Dec06,06 08:06:10	CUR3	Default [CPS]	Default [CPS]
5	Dec06,06 08:06:10	CUR3	2.135 [UA]	19285.00 [CPS]
6	Dec06,06 08:06:14	CUR4	Default [CPS]	Default [CPS]
6	Dec06,06 08:06:14	CUR4	2.135 [UA]	18400.00 [CPS]
7	Jan14,07 21:38:11	CALIPER	7.620 [INCH]	7566.08 [CPS]
7	Jan14,07 21:38:11	CALIPER	17.780 [INCH]	15561.82 [CPS]

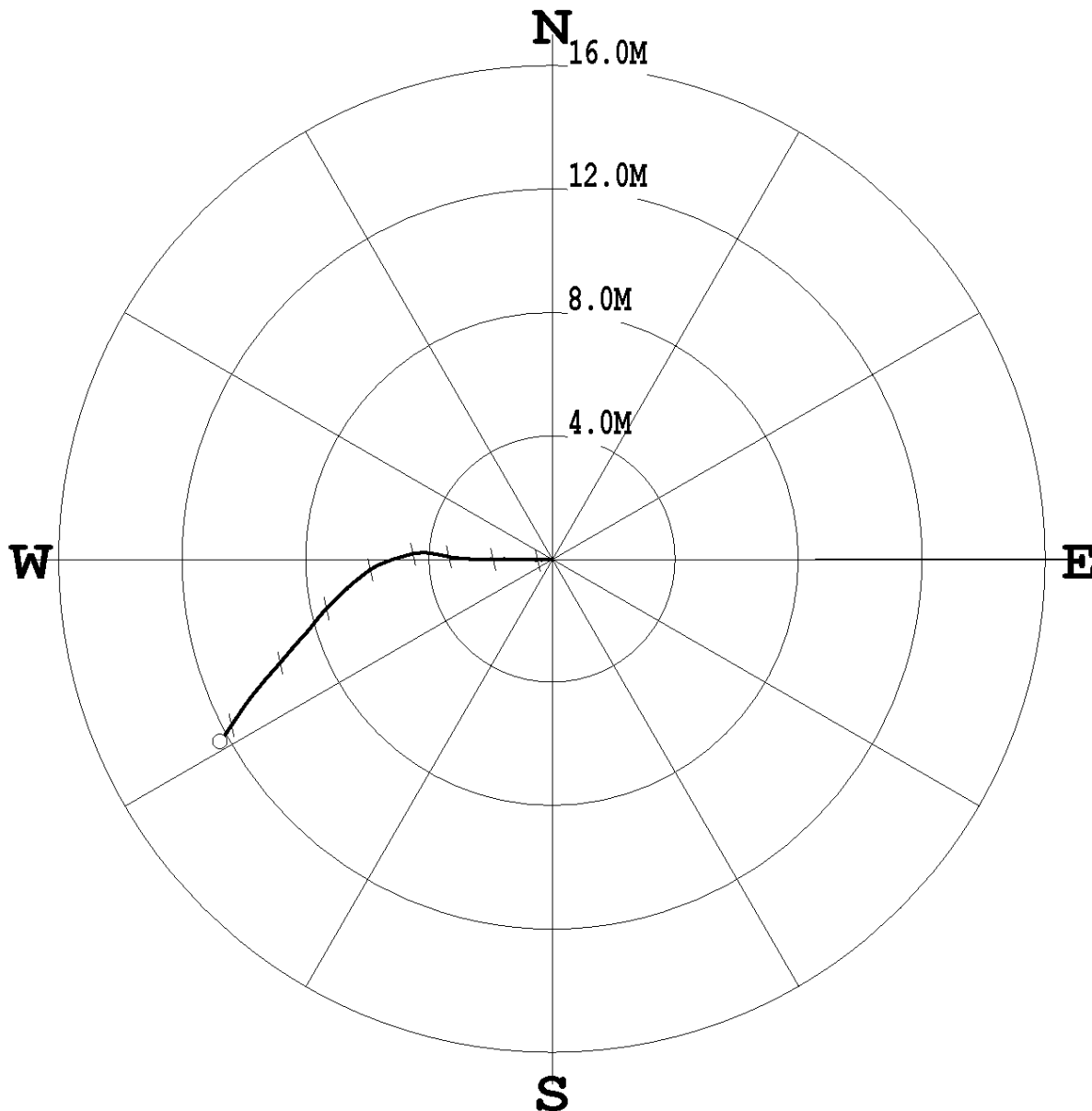
PLAN VIEW COMPU-LOG DEVIATION

CLIENT: ANGLO AMERICAN
LOCATION: PROSPECT
HOLE ID: P004
DATE OF LOG: 01/11/07
PROBE: 9057A 1074



MAG DECL: 21.6

SCALE: 2 M/CM
TRUE DEPTH: 164.97 M
AZIMUTH: 241.2
DISTANCE: 12.3 M
+ = 20 M INCR
○ = BOTTOM OF HOLE





Century-geo.com

GAMMA - NEUTRON

P004

COMPANY: JANGO AMERICAN
WELL: P004
FIELD: PROSPECT
COUNTY: TIMBLER RIDGE
STATE: SOUTHERN CALIFORNIA

OTHER SERVICES:
DENSITY
RHOMEGA
NONE

LOCATION: TIMBLER RIDGE
SECTION: N/A
TOWNSHIP: N/A
RANGE: N/A
APNO: N/A
UNIQUE WELL ID: N/A

PERMANENT DATUM: GL
LOG MEASURED FROM: GL
DRL MEASURED FROM: GL
ELEVATION M: N/A
ELEVATION OF N/A
ELEVATION GL: N/A

DATE: 01/11/07
DEPTH DRIWER: 197.64
BIT SIZE: 10.16
LOG TOP: 0.21
LOG BOTTOM: -165.79

CASING OD: 3.048
CASING BOTTOM: 10.16
CASING TYPE: STEEL
BORING FLUID: WATER
MUD RES: N/A
MUD WEIGHT: N/A
MUD TEMPERATURE: N/A

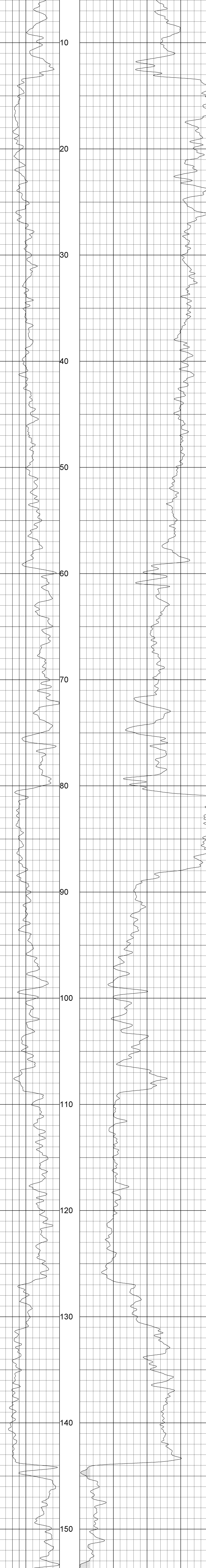
RECORDED BY: R. RACZ
WITNESSED BY: N/A
REMARKS 1: 4" (10.16 CM) BIT SIZE TO TD
REMARKS 2: VERTICAL WELL

ALL SERVICES PROVIDED SUBJECT TO STANDARD TERMS AND CONDITIONS

1:100 NEUTRON P004 01/11/07

LOG PARAMETERS

MATRIX DENSITY : 2.65 NEUTRON MATRIX : SANDSTONE MATRIX DELTA T : 177
MAGNETIC DECL : 21.6 ELECT. CUTOFF : G.L. BIT SIZE : 10.16
PRESENTATION NAME/DATE = 9057A.0 01/14/2007 VERSION = 3.64EK



1:100 NEUTRON P004 01/11/07

LOG PARAMETERS

MATRIX DENSITY : 2.65 NEUTRON MATRIX : SANDSTONE MATRIX DELTA T : 177
MAGNETIC DECL : 21.6 ELECT. CUTOFF : G.L. BIT SIZE : 10.16
PRESENTATION NAME/DATE = 9057A.0 01/14/2007 VERSION = 3.64EK

TOOL CALIBRATION	P004 01/11/07 12:48	SENSOR	STANDARD	RESPONSE
TOOL 9057A	TM VERSION 2	GAMMA	Default	Default
SERIAL NUMBER 1074		GAMMA	Default	Default
		NEUTRON	152.000	210.00
		SP	0.000	59686.00
		SP	343.000	25870.00
		RES(16N)	0.000	3872.00
		RES(16N)	2000.000	103688.00
		RES(64N)	0.000	3852.00
		RES(64N)	2002.000	103797.00
		TEMP	14.610	90500.00
		TEMP	36.280	55705.00
		RES	180.000	19005.00
		RES	1045.000	61980.00
		POR(NEU)	100.000	157.00

COMPANY	ANGLO AMERICAN	OTHER SERVICES	NEUTRON
WELL	P005	PROSPECT	DIAPHRANE
COUNTY	TUMBLER RIDGE	STATE	BREITSH COLUMBIA
LOCATION	TUMBLER RIDGE	SECTION	N/A
TOWNSHIP	N/A	RANGE	N/A
APR NO.	N/A	UNIQUE WELL ID	N/A

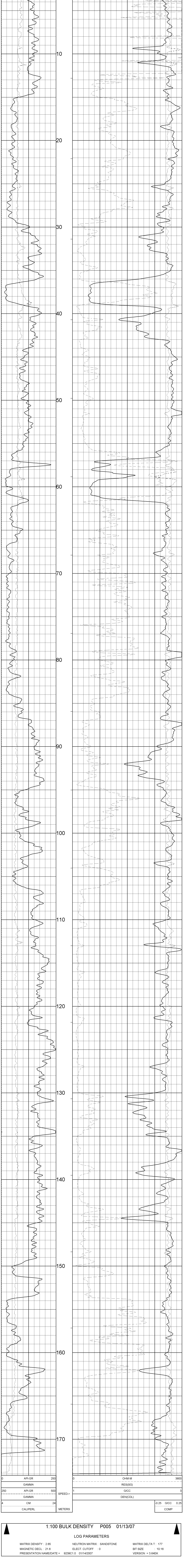
PERMANENT DATUM	GA	ELEVATION RB N/A
LOG MEASURED FROM GIL		ELEVATION OF N/A
DATE	01/13/07	
DEPTH DRILLER	175.28	
BIT SIZE	10.16	
LOG TOP	-0.57	
LOG BOTTOM	174.14	
CASING OD	11.113	
CASING BOTTOM	3.048	
CASING TYPE	STEEL	
BOREHOLE FLUID	WATER	
RHO TEMPERATURE	N/A	
MUD RES	N/A	
MUD WEIGHT	N/A	
WITNESSED BY	N/A	
RECORDED BY	R. RACZ	
REMARKS 1	4" TO 13" 16" 3.5" TO 10"	
REMARKS 2	VERTICAL BOREHOLE	

ALL SERVICES PROVIDED SUBJECT TO STANDARD TERMS AND CONDITIONS

1:100 BULK DENSITY P005 01/13/07

LOG PARAMETERS

MATRIX DENSITY : 2.65	NEUTRON MATRIX : SANDSTONE	MATRIX DELTA T : 177
MAGNETIC DECL : 21.6	ELECT. CUTOFF : 0	BIT SIZE : 10.16
PRESENTATION NAME/DATE = 9239C1.0 01/14/2007		VERSION = 3.64EK



1:100 BULK DENSITY P005 01/13/07

LOG PARAMETERS

MATRIX DENSITY : 2.65	NEUTRON MATRIX : SANDSTONE	MATRIX DELTA T : 177
MAGNETIC DECL : 21.6	ELECT. CUTOFF : 0	BIT SIZE : 10.16
PRESENTATION NAME/DATE = 9239C1.0 01/14/2007		VERSION = 3.64EK

DATE	TIME	SENSOR	STANDARD	RESPONSE
1	Jan13.07 17:41:45	GAMMA	Default [CPS]	Default [CPS]
1	Jan13.07 17:41:45	GAMMA	283.000 [API-GR]	286.00 [CPS]
1	Jan13.07 17:41:45	VOLTAGE	31.850 [MV]	5358.00 [CPS]
1	Jan13.07 17:38:27	VOLTAGE	572.000 [MV]	76681.00 [CPS]
2	Jan13.07 17:38:33	CALIPER	7.620 [CM]	90569.90 [CPS]
2	Jan13.07 17:38:33	CALIPER	17.780 [CM]	196580.91 [CPS]
3	Jan13.07 17:39:09	DEN(LS)	2.383 [G/CC]	4346.20 [CPS]
3	Jan13.07 17:39:09	DEN(LS)	1.000 [G/CC]	33914.50 [CPS]
4	Jan13.07 17:39:17	DEN(SS)	2.383 [G/CC]	30037.30 [CPS]
4	Jan13.07 17:39:17	DEN(SS)	1.000 [G/CC]	57286.30 [CPS]
5	Jan13.07 08:22:33	CALIPERL	7.620 [CM]	109069.91 [CPS]
5	Jan13.07 08:22:33	CALIPERL	17.780 [CM]	211580.91 [CPS]
6	Jan13.07 17:39:42	CURRENT	291.000 [UA]	29568.00 [CPS]
7	Jan13.07 17:39:42	CURRENT	Default [CPS]	Default [CPS]
8	Oct29.06 14:49:46	X	Default [CPS]	Default [CPS]

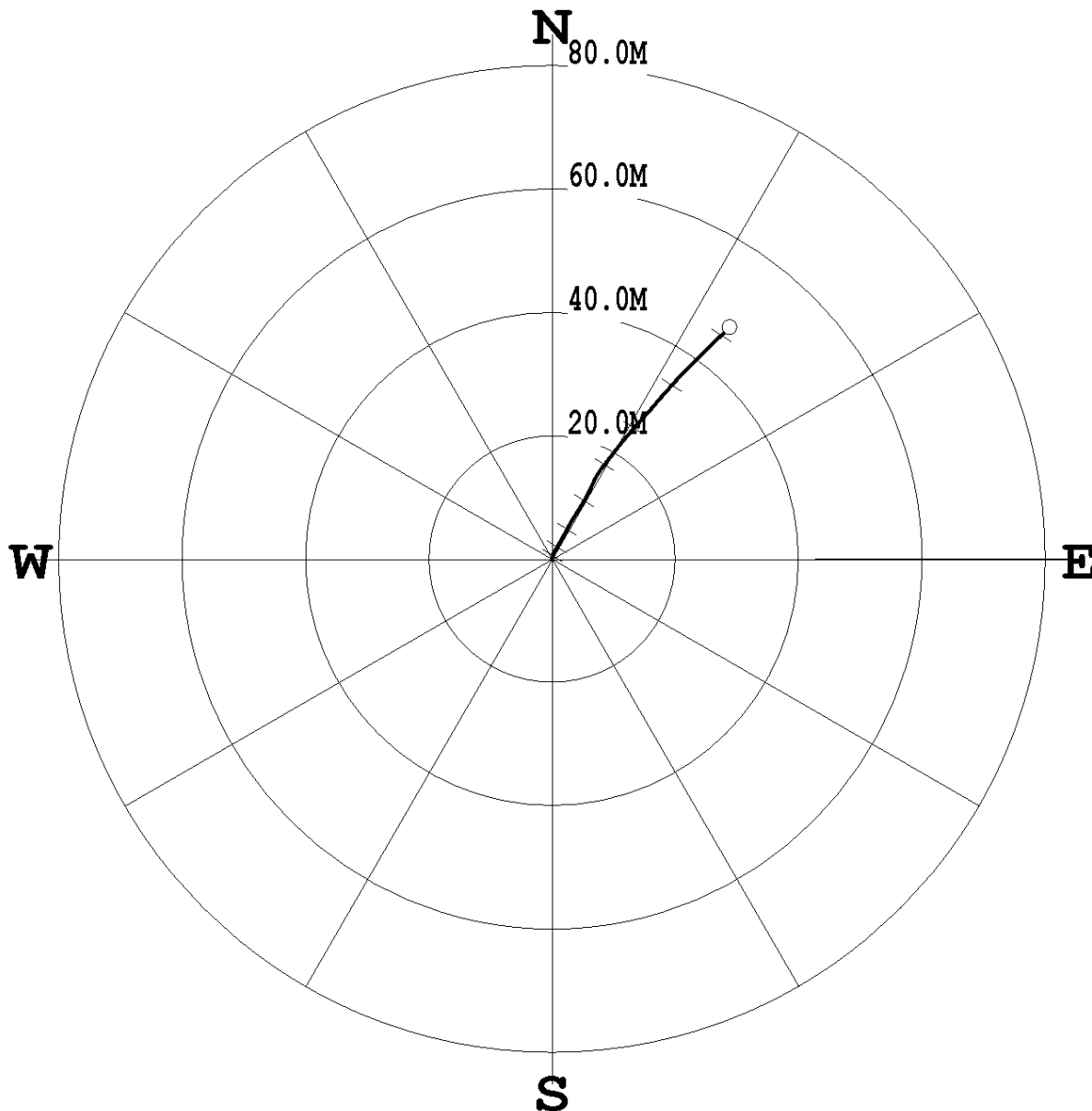
PLAN VIEW COMPU-LOG DEVIATION

CLIENT: ANGLO AMERICAN
LOCATION: PROSPECT
HOLE ID: P005
DATE OF LOG: 01/13/07
PROBE: 9411A 380



MAG DECL: 21.6

SCALE: 10 M/CM
TRUE DEPTH: 162.95 M
AZIMUTH: 37.4
DISTANCE: 47.3 M
+ = 20 M INCR
○ = BOTTOM OF HOLE



Century-geo.com

COMPANY	ANGLO AMERICAN	OTHER SERVICES	
WELL	P005	NEUTRON DENSITY	
FIELD	PROSPECT		
COUNTY	TUMBLER RIDGE		
STATE	BATTS COLUMBA		

LOCATION	TUMBLER RIDGE
SECTION	N/A
TOWNSHIP	N/A
RANGE	N/A
API NO.	N/A
UNIQUE WELL ID.	N/A
PERMANENT ID	31
LOG MEASURED FROM GL	ELEVATION RB N/A
DRL MEASURED FROM GL	ELEVATION OF N/A
	ELEVATION GL N/A

DATE	01/13/07
DEPTH DRIWER	175.26
BIT SIZE	10.16
LOG TOP	4.45
LOG BOTTOM	171.50
CASING OD	111.13
CASING BOTTOM	3.046

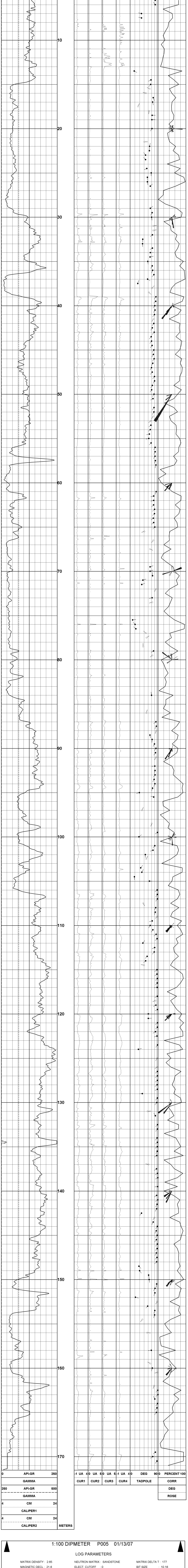
CASING TYPE	STEEL
BOHROCK FLUID	WATER
ROI TEMPERATURE	N/A
MUD RES	N/A
MUD WEIGHT	N/A
WITNESSED BY	N/A
RECORDED BY	R. RACZ
REMARKS 1	4" TO 13" IS 3.5" TO 7"
REMARKS 2	VERTICAL BONDHOLE

ALL SERVICES PROVIDED SUBJECT TO STANDARD TERMS AND CONDITIONS

1:100 DIPMETER P005 01/13/07

LOG PARAMETERS

MATRIX DENSITY : 2.65	NEUTRON MATRIX : SANDSTONE	MATRIX DELTA T : 177
MAGNETIC DECL : 21.6	ELECT. CUTOFF : 0	BIT SIZE : 10.16
PRESENTATION NAME/DATE = dipc1-100a.0 01/14/2007		VERSION = 3.64EK



1:100 DIPMETER P005 01/13/07

LOG PARAMETERS

MATRIX DENSITY : 2.65	NEUTRON MATRIX : SANDSTONE	MATRIX DELTA T : 177
MAGNETIC DECL : 21.6	ELECT. CUTOFF : 0	BIT SIZE : 10.16
PRESENTATION NAME/DATE = dipc1-100a.0 01/14/2007		VERSION = 3.64EK

TOOL CALIBRATION P005 01/13/07 19:13

SERIAL NUMBER	DATE	TIME	SENSOR	STANDARD	RESPONSE
380	Jan14,07	13:06:15	GAMMA	0.000 [API-GR]	10.00 [CPS]
	Jan14,07	13:06:15	GAMMA	410.000 [API-GR]	445.00 [CPS]
	Jan14,07	13:22:43	VOLTAG	104.000 [MV]	720.00 [CPS]
	Jan14,07	13:22:43	VOLTAG	341.000 [MV]	1715.00 [CPS]
	Dec06,06	08:06:02	CUR1	Default [UA]	Default [CPS]
	Dec06,06	08:06:02	CUR1	2.135 [UA]	19950.00 [CPS]
	Dec06,06	08:06:06	CUR2	Default [CPS]	Default [CPS]
	Dec06,06	08:06:06	CUR2	2.135 [UA]	12850.00 [CPS]
	Dec06,06	08:06:10	CUR3	Default [CPS]	Default [CPS]
	Dec06,06	08:06:10	CUR3	2.135 [UA]	19285.00 [CPS]
	Dec06,06	08:06:14	CUR4	Default [CPS]	Default [CPS]
	Dec06,06	08:06:14	CUR4	2.135 [UA]	18400.00 [CPS]
	Jan14,07	21:12:32	CALIPER1	7.620 [INCH]	7566.08 [CPS]
	Jan14,07	21:12:32	CALIPER1	17.780 [INCH]	15561.82 [CPS]

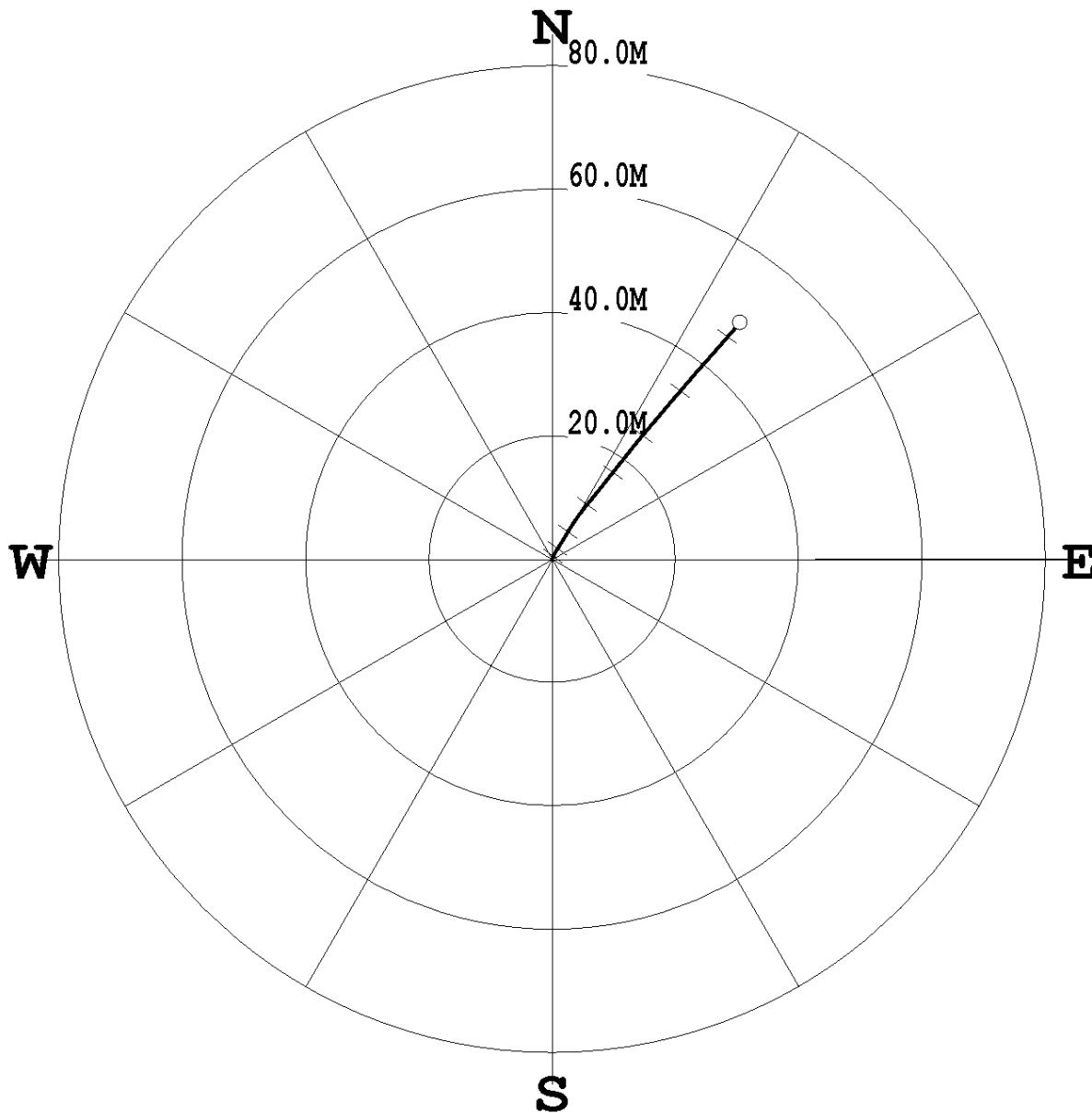
PLAN VIEW COMPU-LOG DEVIATION

CLIENT: ANGLO AMERICAN
LOCATION: PROSPECT
HOLE ID: P005
DATE OF LOG: 01/13/07
PROBE: 9057A 1074



MAG DECL: 21.6

SCALE: 10 M/CM
TRUE DEPTH: 164.52 M
AZIMUTH: 38.4
DISTANCE: 48.9 M
+ = 20 M INCR
○ = BOTTOM OF HOLE



COMPANY	ANGLO AMERICAN	OTHER SERVICES	
WELL	P005	DENSITY	
COUNTY	PROSPECT	IPMETS	
STATE	TUMBLER RIDGE		
LOCATION	TUMBLER RIDGE		
SECTION	N/A		
TOWNSHIP	N/A		
RANGE	N/A		
AP NO.	N/A		
UNIQUE WELL ID.	N/A		

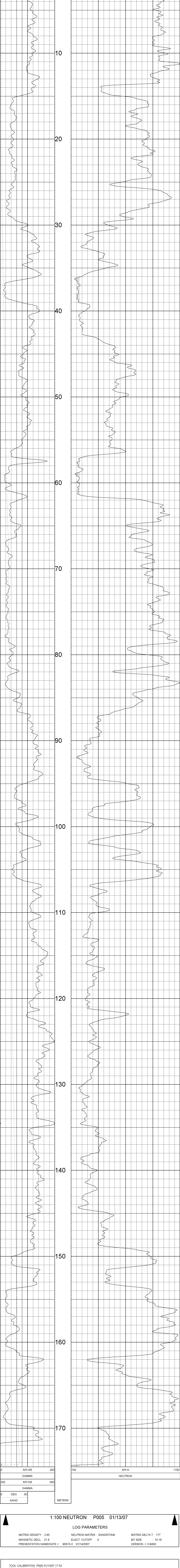
PERMANENT DATUM	GL	ELEVATION RB N/A
LOG MEASURED FROM GL		ELEVATION OF N/A
DRL MEASURED FROM GL		ELEVATION OF N/A
DATE	01/13/07	
DEPTH DRIFFER	175.28	
BIT SIZE	10.16	
LOG TOP	-0.57	
LOG BOTTOM	174.46	
CASING OD	11.113	
CASING BOTTOM	3.946	
CASING TYPE	STEEL	
BOREHOLE FLUID	WATER	
RHM TEMPERATURE	N/A	
MUD RES.	N/A	
MUD WEIGHT	N/A	
WITNESSED BY	N/A	
RECORDED BY	R. RACZ	
REMARKS 1	* TO 137.16, 3.5" TO D	
REMARKS 2	GAMMA FROM DENSITY TOOL	

ALL SERVICES PROVIDED SUBJECT TO STANDARD TERMS AND CONDITIONS

1:100 NEUTRON P005 01/13/07

LOG PARAMETERS

MATRIX DENSITY : 2.65	NEUTRON MATRIX : SANDSTONE	MATRIX DELTA T : 177
MAGNETIC DECL : 21.6	ELECT. CUTOFF : 0	BIT SIZE : 10.16
PRESENTATION NAME/DATE = 9057A.0 01/14/2007		VERSION = 3.64EK



1:100 NEUTRON P005 01/13/07

LOG PARAMETERS

MATRIX DENSITY : 2.65	NEUTRON MATRIX : SANDSTONE	MATRIX DELTA T : 177
MAGNETIC DECL : 21.6	ELECT. CUTOFF : 0	BIT SIZE : 10.16
PRESENTATION NAME/DATE = 9057A.0 01/14/2007		VERSION = 3.64EK

TOOL CALIBRATION	P005 01/13/07 17:52
TOOL	9239C1 TM VERSION 2017
SERIAL NUMBER	1268

DATE	TIME	SENSOR	STANDARD	RESPONSE
1	Jan13,07 17:41:45	GAMMA	Default [CPS]	Default [CPS]
1	Jan13,07 17:41:45	GAMMA	283.000 [API-GR]	286.00 [CPS]
2	Jan13,07 17:38:27	VOLTAGE	31.850 [MV]	5358.00 [CPS]
2	Jan13,07 17:38:27	VOLTAGE	572.000 [MV]	76681.00 [CPS]
3	Jan13,07 17:38:33	CALIPER	7.620 [CM]	90569.80 [CPS]
3	Jan13,07 17:38:33	CALIPER	17.780 [CM]	168580.91 [CPS]
4	Jan13,07 17:39:09	DEN(LS)	2.383 [G/CC]	4346.20 [CPS]
4	Jan13,07 17:39:09	DEN(LS)	1.000 [G/CC]	33914.50 [CPS]
5	Jan13,07 17:39:17	DEN(SS)	2.383 [G/CC]	30037.30 [CPS]
5	Jan13,07 17:39:17	DEN(SS)	1.000 [G/CC]	57286.30 [CPS]
6	Jan14,07 08:22:33	CALIPERL	7.620 [CM]	109069.91 [CPS]
6	Jan14,07 08:22:33	CALIPERL	17.780 [CM]	211580.91 [CPS]
7	Jan13,07 17:39:42	CURRENT	291.000 [UA]	29568.00 [CPS]
7	Jan13,07 17:39:42	CURRENT	Default [CPS]	Default [CPS]
8	Oct29,06 14:49:46	X	Default [CPS]	Default [CPS]

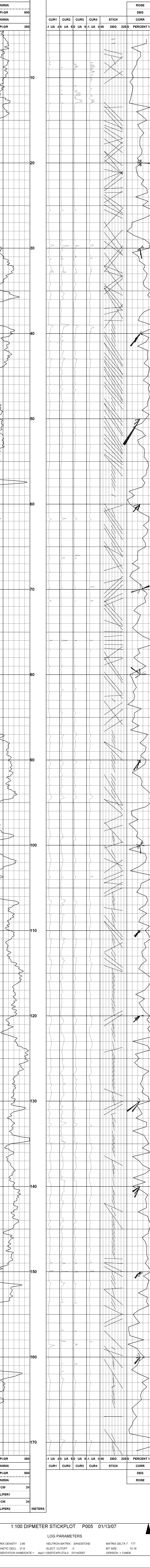
COMPANY	ANGLO AMERICAN	OTHER SERVICES	NEUTRON DENSITY
WELL	P005		
FIELD	PROSPECT		
COUNTY	TUMBLER RIDGE		
STATE	TUMBLER RIDGE		
LOCATION	TUMBLER RIDGE		
SECTION	N/A		
TOWNSHIP	N/A		
RANGE	N/A		
API NO.	N/A		
UNIQUE WELL ID.	N/A		
PERMANENT ID	31	ELEVATION RB N/A	
LOG MEASURED FROM GL		ELEVATION OF N/A	
DRL MEASURED FROM GL		ELEVATION GL N/A	

DATE	01/13/07	
DEPTH DRIILLER	175.26	
BIT SIZE	10.16	
LOG TOP	4.45	
LOG BOTTOM	171.90	
CASING OD	111.13	
CASING BOTTOM	3.046	
CASING TYPE	STEEL	
BOHNERO FLUID	WATER	
RHO TEMPERATURE	N/A	
MILD RES	N/A	
MILD WEIGHT	N/A	
WITNESSED BY	N/A	
RECORDED BY	R. RACZ	
REMARKS 1	4" TO 13" IS 3.5" TO 7"	
REMARKS 2	VERTICAL BONDHOLE	
ALL SERVICES PROVIDED SUBJECT TO STANDARD TERMS AND CONDITIONS		

1:100 DIPMETER STICKPLOT P005 01/13/07

LOG PARAMETERS

MATRIX DENSITY : 2.65	NEUTRON MATRIX : SANDSTONE	MATRIX DELTA T : 177
MAGNETIC DECL : 21.6	ELECT. CUTOFF : 0	BIT SIZE : 10.16
PRESENTATION NAME/DATE = dipc1-100STICKPLOTa.0	01/14/2007	VERSION = 3.64EK



1:100 DIPMETER STICKPLOT P005 01/13/07

LOG PARAMETERS

MATRIX DENSITY : 2.65	NEUTRON MATRIX : SANDSTONE	MATRIX DELTA T : 177
MAGNETIC DECL : 21.6	ELECT. CUTOFF : 0	BIT SIZE : 10.16
PRESENTATION NAME/DATE = dipc1-100STICKPLOTa.0	01/14/2007	VERSION = 3.64EK

TOOL CALIBRATION P005 01/13/07 19:13

TOOL 9411A TM VERSION 1 SERIAL NUMBER 380

DATE	TIME	SENSOR	STANDARD	RESPONSE
1	Jan14,07 13:06:15	GAMMA	0.000 [API-GR]	10.00 [CPS]
1	Jan14,07 13:06:15	GAMMA	410.000 [API-GR]	445.00 [CPS]
2	Jan14,07 13:22:43	VOLTAG	104.000 [MV]	720.00 [CPS]
2	Jan14,07 13:22:43	VOLTAG	341.000 [MV]	1715.00 [CPS]
3	Dec06,06 08:06:02	CUR1	Default [UA]	Default [CPS]
4	Dec06,06 08:06:02	CUR1	2.135 [UA]	19950.00 [CPS]
4	Dec06,06 08:06:06	CUR2	Default [CPS]	Default [CPS]
5	Dec06,06 08:06:10	CUR2	2.135 [UA]	12850.00 [CPS]
6	Dec06,06 08:06:10	CUR3	Default [CPS]	Default [CPS]
6	Dec06,06 08:06:10	CUR3	2.135 [UA]	19285.00 [CPS]
6	Dec06,06 08:06:14	CUR4	Default [CPS]	Default [CPS]
6	Dec06,06 08:06:14	CUR4	2.135 [UA]	18400.00 [CPS]
7	Jan14,07 21:12:32	CALIPER	17.820 [INCH]	7566.08 [CPS]
7	Jan14,07 21:12:32	CALIPER	7.620 [INCH]	15561.82 [CPS]