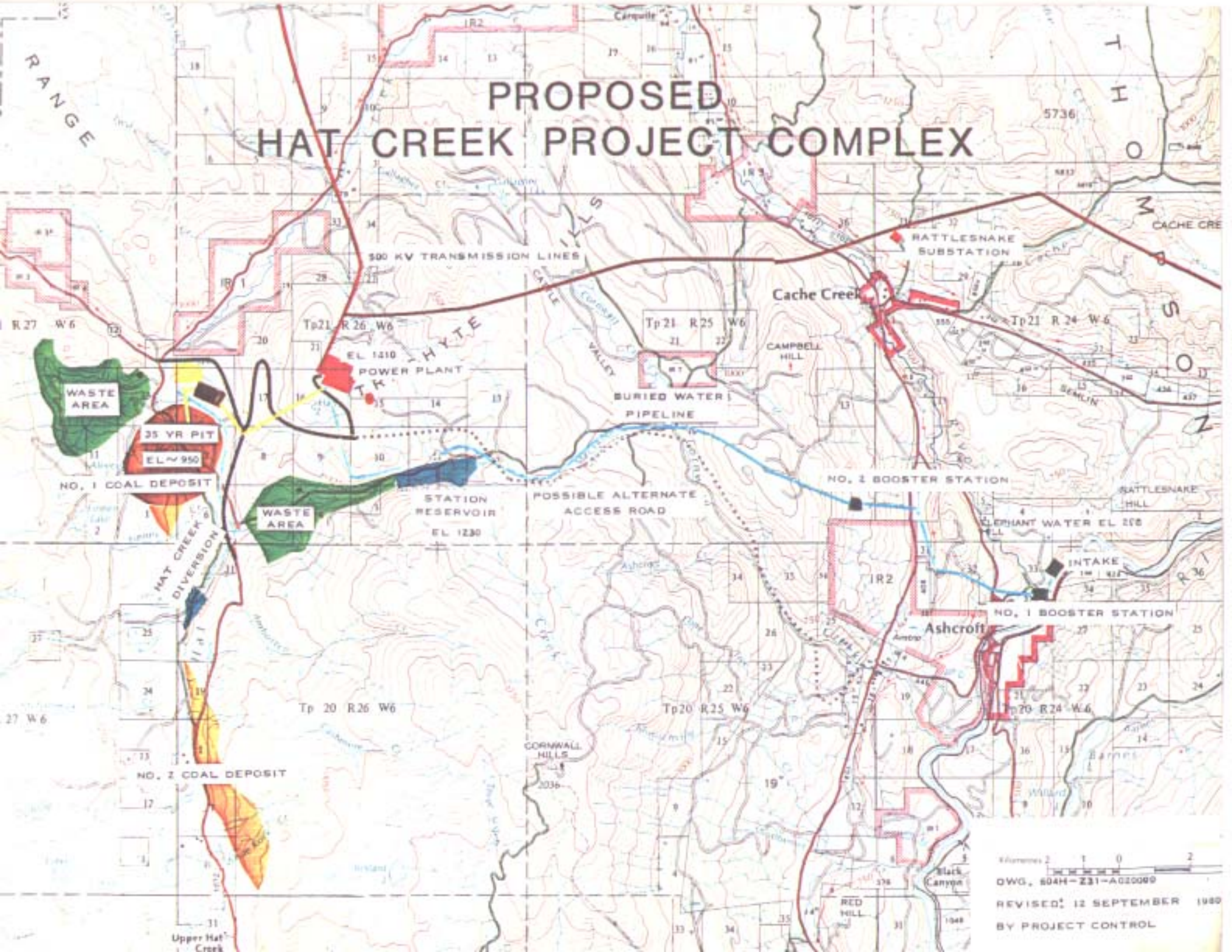


BRITISH COLUMBIA HYDRO AND POWER AUTHORITY

HAT CREEK PROJECT

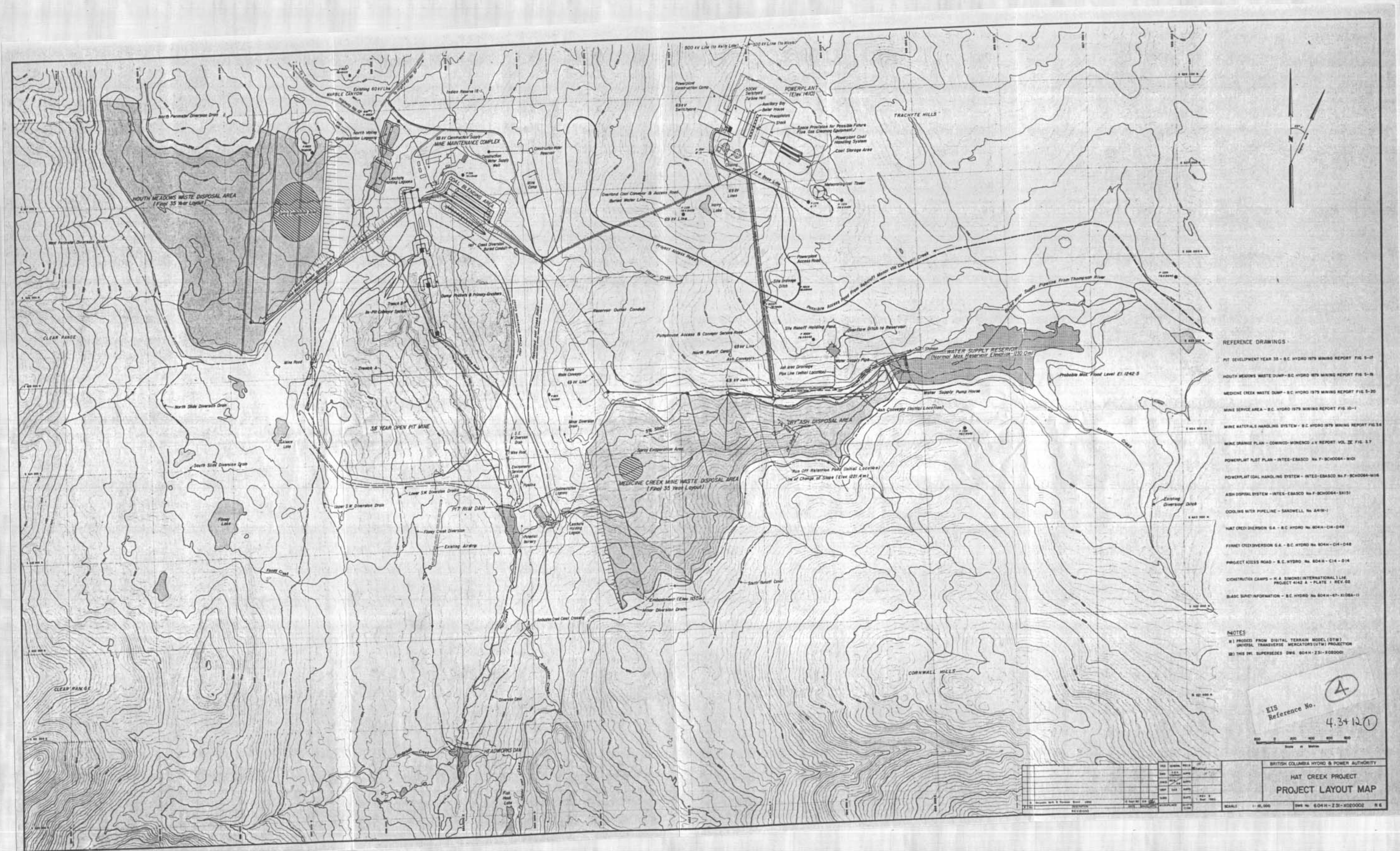
3. British Columbia Hydro and Power Authority - Hat Creek Project -  
Proposed Hat Creek Project Complex Map - 12 September 1980 -  
Drawing 604H-Z31-A020000.
4. British Columbia Hydro and Power Authority - Hat Creek Project -  
Project Layout Map - Drawing 604H-Z31-X020002 R6 - September 1980.
12. British Columbia Hydro and Power Authority - Hat Creek Project -  
Master Schedule (1983 In-Service Unit 1) Drawing 604H-Z30-X031101  
R0 - 12 November 1980.

# PROPOSED HAT CREEK PROJECT COMPLEX



Kilometers 2 1 0 1 2  
 DWG. 604H-231-A020099  
 REVISED: 12 SEPTEMBER 1980  
 BY PROJECT CONTROL





- REFERENCE DRAWINGS**
- PIT DEVELOPMENT YEAR 35 - B.C. HYDRO 1979 MINING REPORT FIG. 9-17
  - HOUTH MEADOWS WASTE DUMP - B.C. HYDRO 1979 MINING REPORT FIG. 9-18
  - MEDICINE CREEK WASTE DUMP - B.C. HYDRO 1979 MINING REPORT FIG. 9-20
  - MINE SERVICE AREA - B.C. HYDRO 1979 MINING REPORT FIG. 10-1
  - MINE MATERIALS HANDLING SYSTEM - B.C. HYDRO 1979 MINING REPORT FIG. 33
  - MINE DRAINAGE PLAN - COMING-MONROE J.V. REPORT VOL. II, FIG. 3.7
  - POWERPLANT PLOT PLAN - INTES-EBASCO No. F-8C00064-M01
  - POWERPLANT COAL HANDLING SYSTEM - INTES-EBASCO No. F-8C00064-M04
  - ASH DISPOSAL SYSTEM - INTES-EBASCO No. F-8C00064-S151
  - COOLING WATER PIPELINE - SANDWELL No. A419-1
  - HAT CREEK DIVERSION G.A. - B.C. HYDRO No. 604H-C14-D48
  - FINNEY CREEK DIVERSION G.A. - B.C. HYDRO No. 604H-C14-D48
  - PROJECT ACCESS ROAD - B.C. HYDRO No. 604H-C14-D14
  - CONSTRUCTION CAMPS - H.A. SIMONS (INTERNATIONAL) Ltd. PROJECT 4142 A - PLATE 1 REV. 02
  - BASIC SAPE INFORMATION - B.C. HYDRO No. 604H-67-X08000-11

**NOTES**

- 1) PROJECT FROM DIGITAL TERRAIN MODEL (DTM)
- 2) UNIVERSAL TRANSVERSE MERCATORS (UTM) PROJECTION
- 3) THIS DRAWING SUPERSEDES DWG. 604H-Z31-X08000-11

EIS Reference No. **4.34121**

Scale: 1" = 20,000'

BRITISH COLUMBIA HYDRO & POWER AUTHORITY

**HAT CREEK PROJECT**

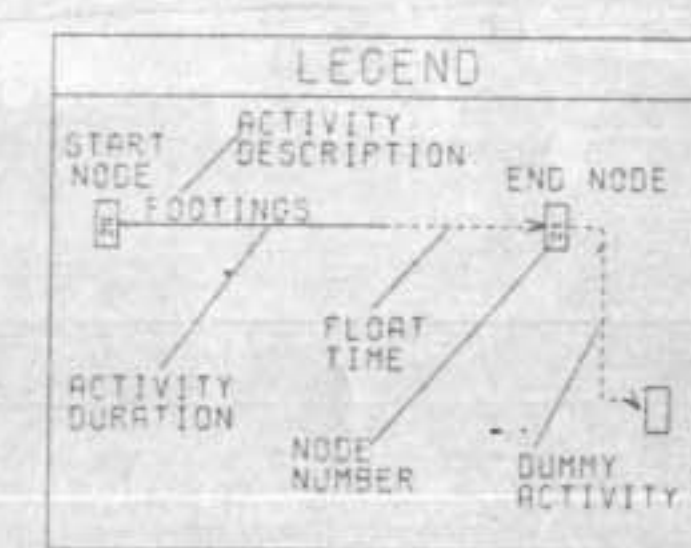
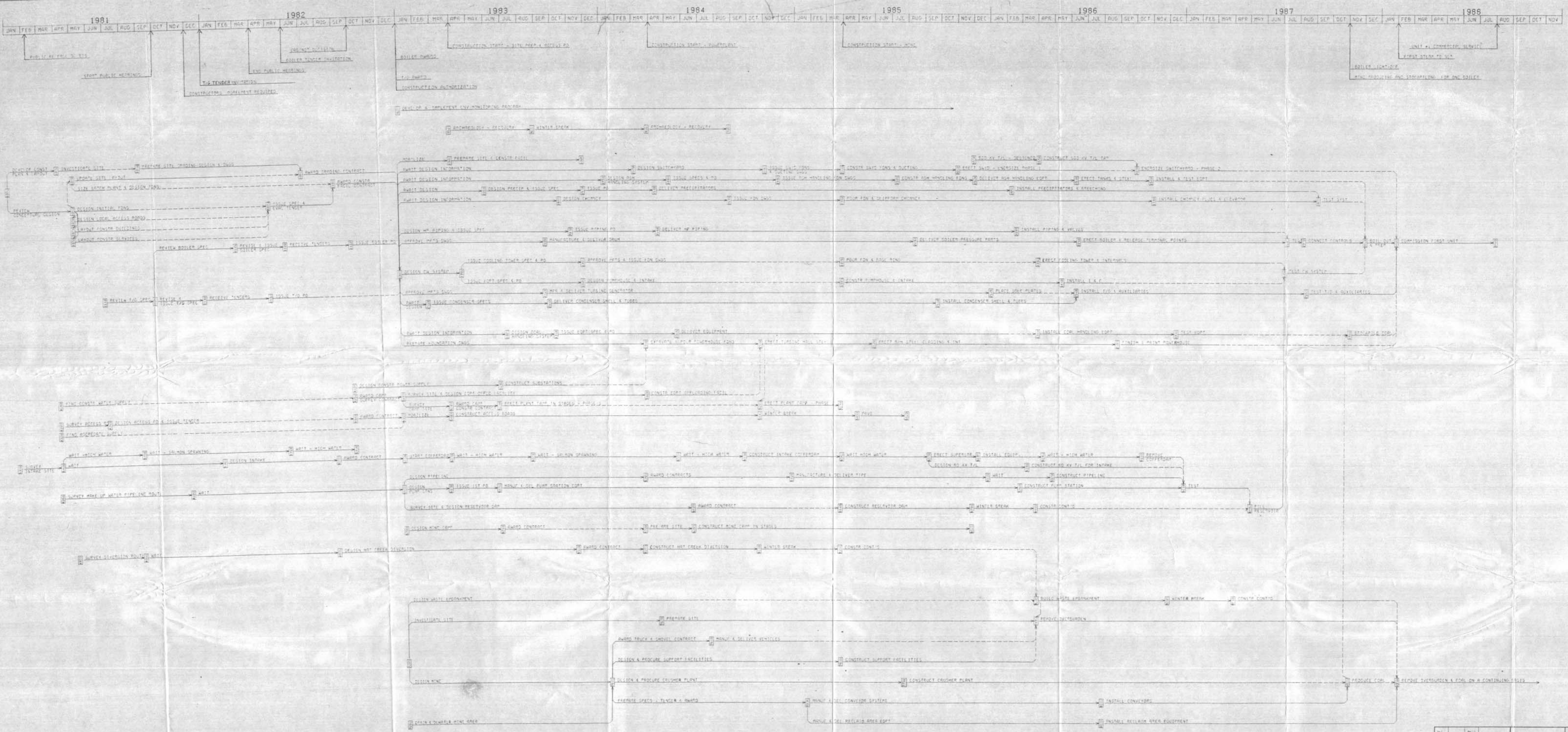
**PROJECT LAYOUT MAP**

DWG. No. 604H-Z31-X08000-11

NO.	DATE	BY	DESCRIPTION



MILESTONES  
ENV.  
POWERPLANT  
OFFSITES  
MINE



4.3+12 (2)

NOTE: THIS IS THE REFERENCE FOR THE E.I.S. SCHEDULE  
BRITISH COLUMBIA HYDRO AND POWER AUTHORITY  
HATCREEK THERMAL PROJECT  
MASTER SCHEDULE  
(1988 IN-SERVICE UNIT 1)  
2000 MW ALTERNATIVE

REV.	DATE	BY	CHKD.
1	1988	BN	
2	1988	BN	
3	1988	BN	
4	1988	BN	
5	1988	BN	
6	1988	BN	
7	1988	BN	
8	1988	BN	
9	1988	BN	
10	1988	BN	
11	1988	BN	
12	1988	BN	
13	1988	BN	
14	1988	BN	
15	1988	BN	
16	1988	BN	
17	1988	BN	
18	1988	BN	
19	1988	BN	
20	1988	BN	
21	1988	BN	
22	1988	BN	
23	1988	BN	
24	1988	BN	
25	1988	BN	
26	1988	BN	
27	1988	BN	
28	1988	BN	
29	1988	BN	
30	1988	BN	
31	1988	BN	
32	1988	BN	
33	1988	BN	
34	1988	BN	
35	1988	BN	
36	1988	BN	
37	1988	BN	
38	1988	BN	
39	1988	BN	
40	1988	BN	
41	1988	BN	
42	1988	BN	
43	1988	BN	
44	1988	BN	
45	1988	BN	
46	1988	BN	
47	1988	BN	
48	1988	BN	
49	1988	BN	
50	1988	BN	