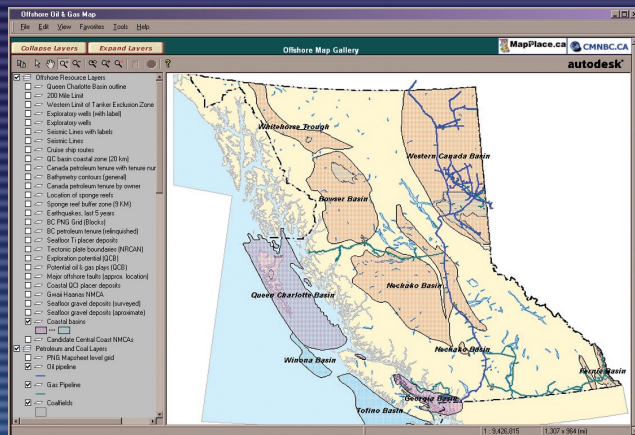


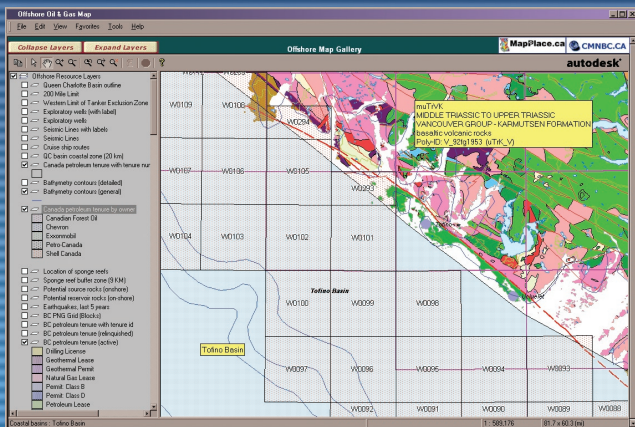
The Offshore Map Gallery uses a free, on-line, cutting edge tool (AutoDesk MAPGUIDE Viewer) to immediately deliver data on marine and submarine resources to the user over the Internet.

The Offshore Map Gallery technology enables on-line users to create multiple, customized maps from a large atlas of geospatial datasets.

The Gallery presents a unique insight into the distribution of resources in the Pacific coastal and marine areas including fisheries, sensitive habitats, marine parks, sedimentary basins with oil and gas resource potential, geological hazards such as earthquakes and shoreline sensitivity maps prepared for oil spill response.



Provincial scale map showing location of sedimentary basins and pipeline network in B.C.



Zoom in to Tofino Basin showing offshore tenure, exploratory wells and bedrock geology. Note the fly-out which gives attribute information for the selected bedrock polygon.



BRITISH COLUMBIA

Ministry of Energy and Mines
Offshore Oil and Gas Team

www.mapplace.ca

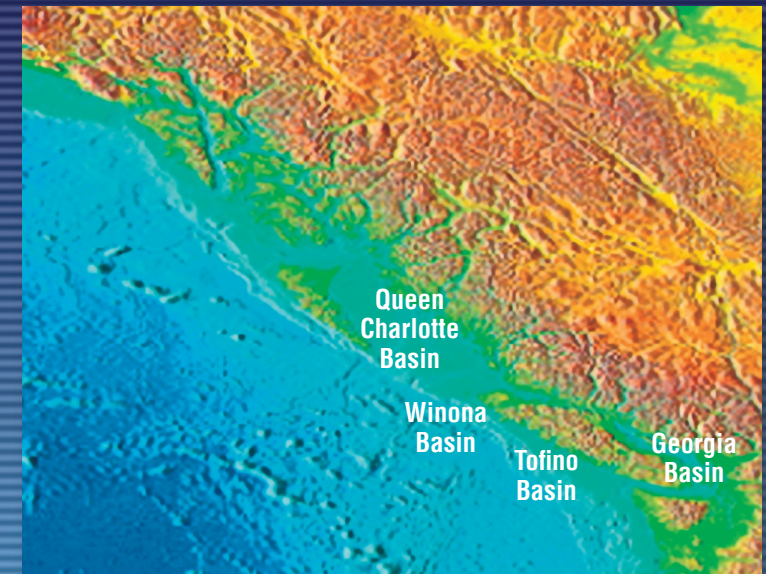
www.offshoreoilandgas.gov.bc.ca



BRITISH COLUMBIA

Ministry of Energy and Mines
Offshore Oil and Gas Team

BRITISH COLUMBIA OFFSHORE MAP GALLERY



Contact

Larry Jones, P.Geo.

Geosciences, Research & Development

Ministry of Energy & Mines

PO Box 9320 Stn Prov Govt

Victoria, BC V8W 9N3

Ph: (250)952-0386

Fax: (250) 952-0381

Email: larry.jones@gems5.gov.bc.ca

- FIND detailed information on coastal and offshore B.C.
- CREATE custom maps using AutoDesk MAPGUIDE Viewer
- LAYER coastal and marine resource information

www.offshoreoilandgas.gov.bc.ca

www.offshoreoilandgas.gov.bc.ca

The MapGuide Viewer

The screenshot shows the 'Offshore Oil & Gas Map' application window. The interface includes a menu bar (File, Edit, View, Favorites, Tools, Help), a toolbar with navigation icons, and a 'Layers' panel on the left. The main map area displays a topographic map of the BC coast with a grid overlay. A specific feature, 'W0227', is highlighted in yellow. A context menu is open over the map, showing options like 'Copy', 'Zoom', 'Bookmarks', 'Select', 'View', and 'About'. The status bar at the bottom shows the current layer ('Canada petroleum tenure with tenure number : W0227'), a scale of 1:2,162,964, and a map size of 305 x 214 (mi).

Copy to other graphics software

Pan, Zoom and Zoom-to-Search Tools

Report for Selected Object

Fly-out attributes for selected feature

Custom layer selection

Layer identification and cursor position

Pop-up Menu accessed by right mouse button

Full User's Manual and On-line Help available at www.mapplace.ca

Viewing scale

Size of map window

Use the Offshore Map Gallery...

FOR EDUCATION

The Offshore Map Gallery is a hands on education resource for teachers, students and coastal communities. It provides immediate desktop access to information on coastal and marine resources.

FOR PLANNING AND BUSINESS

The Offshore Map Gallery is a comprehensive research and planning tool providing immediate access to data for the BC coastal and marine areas. The Gallery enables the manipulation of data and provides access to a wide variety of datasets that can assist integrated management and informed decision making in many scenarios.

Sources of Data

The Offshore Map Gallery and the partner Community Mapping Network (CMN) site use a state of the art Internet tool to access public data from a number of remote computers through a distributed network. The data are owned and operated by the host organizations. Their permission to link to and display their data is acknowledged. Currently the Offshore Map Gallery and the partner CMN link to data from the federal Dept. of Fisheries & Oceans, Natural Resources Canada and Environment Canada and to the provincial Ministries of Energy & Mines, Sustainable Resource Management and Water Land and Air Protection.