

BRITISH COLUMBIA
PROSPECTORS ASSISTANCE PROGRAM
MINISTRY OF ENERGY AND MINES
GEOLOGICAL SURVEY BRANCH

PROGRAM YEAR: 2001/2002

REPORT #: PAP 01-3

NAME: DAVID JAVORSKY

BRITISH COLUMBIA PROSPECTORS ASSISTANCE PROGRAM

PROSPECTING REPORT

Platinum Nuggets From Tulameen River, B.C.



Submitted by: DAVID JAVORSKY
P.O. Box 806
STEWART B.C.
V0T 1W0 CAN.

JANUARY 10, 2002

map received 2/27/02
misc

Rec'd
all 5/02
JH

In Conclusion

The prospector's Assistance grant keep me in the field for 54 days and I spent 8 days traveling to government offices, Regional geologist, assayers and Recorders offices. I've gotten part of the ground optioned and that company has already flown an Airborn Magnetic survey and has contracted to do \$40,000 worth of work on the ground in 2002. I expect to option other parts of this property before the end of the Roundup.

- 1.) I accomplished a lot of Road Repair.
 - 2.) I visited and sampled the sulfide zones at the edges of the ultra mafic intrusion.
 - 3.) I located a reef carrying chromite and it assays 0.148 ounce platinum per ton.
 - 4.) I obtained some of the best platinum nugget samples to come out of the Tulameen River and the B.C. Geo Survey currently is studying them.
 - 5.) The platinum ^{nuggets} contains chromite crystals and the chromite's contain platinum, so at least some of the platinum in the tulameen is associated with chromite and now we have a chromite Reef that contains platinum.
 - 6.) Obtained some nice pictures of platinum Nuggets.
- This has been a successful season.

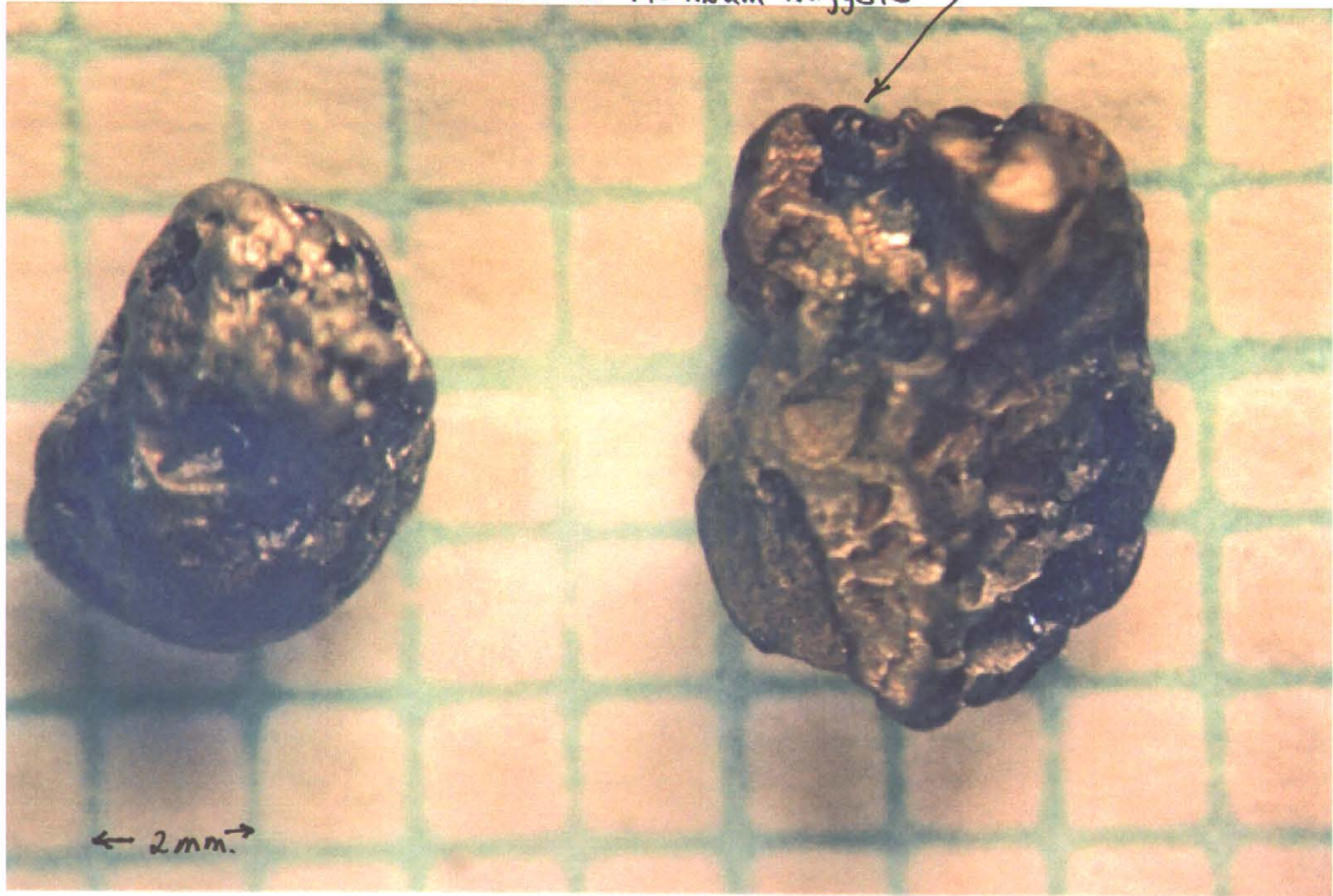
Dave Tavorosky

platinum Nugget from the Tulameen River, B.C. Canada

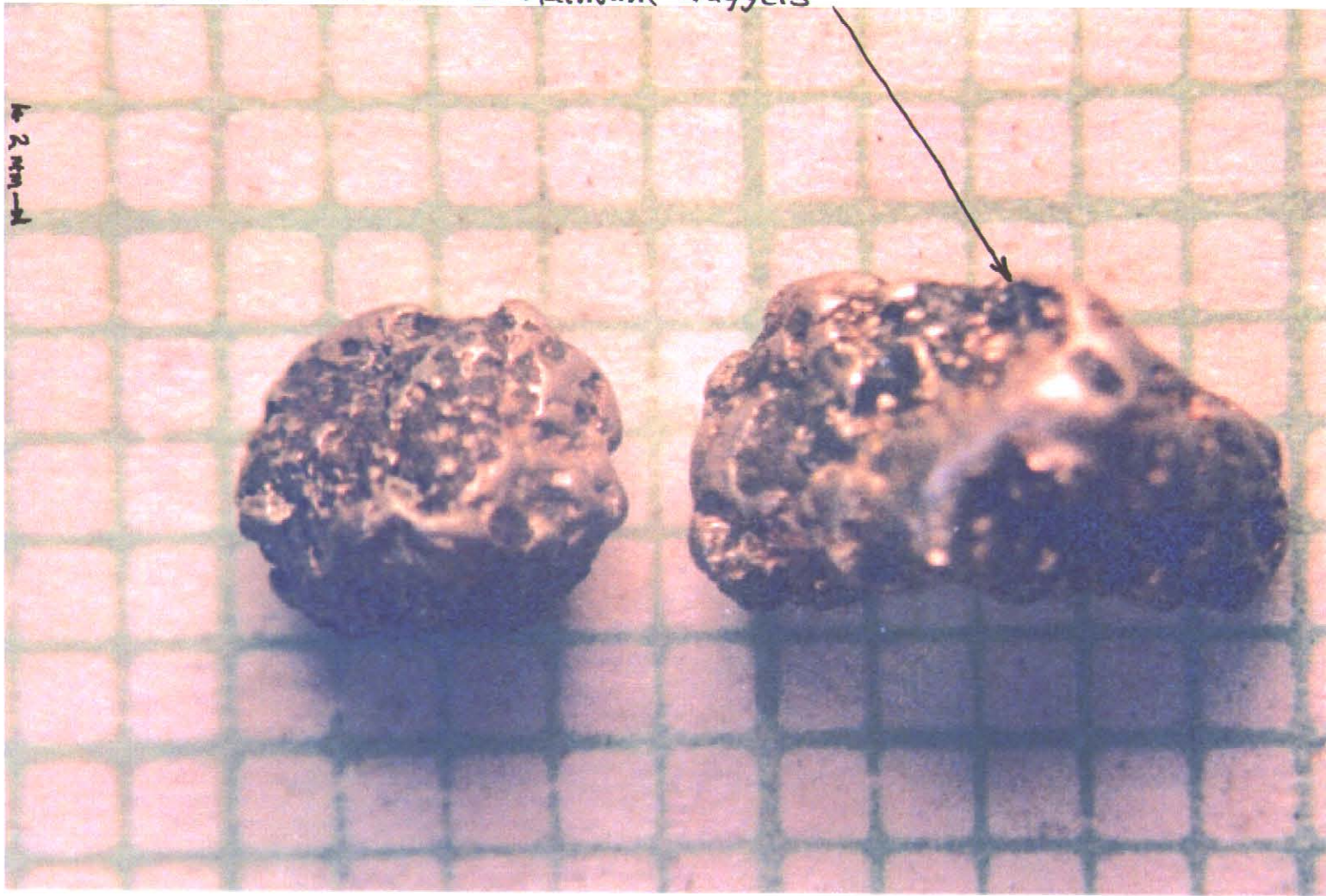


2 mm.

Chromite Grains in Platinum Nuggets



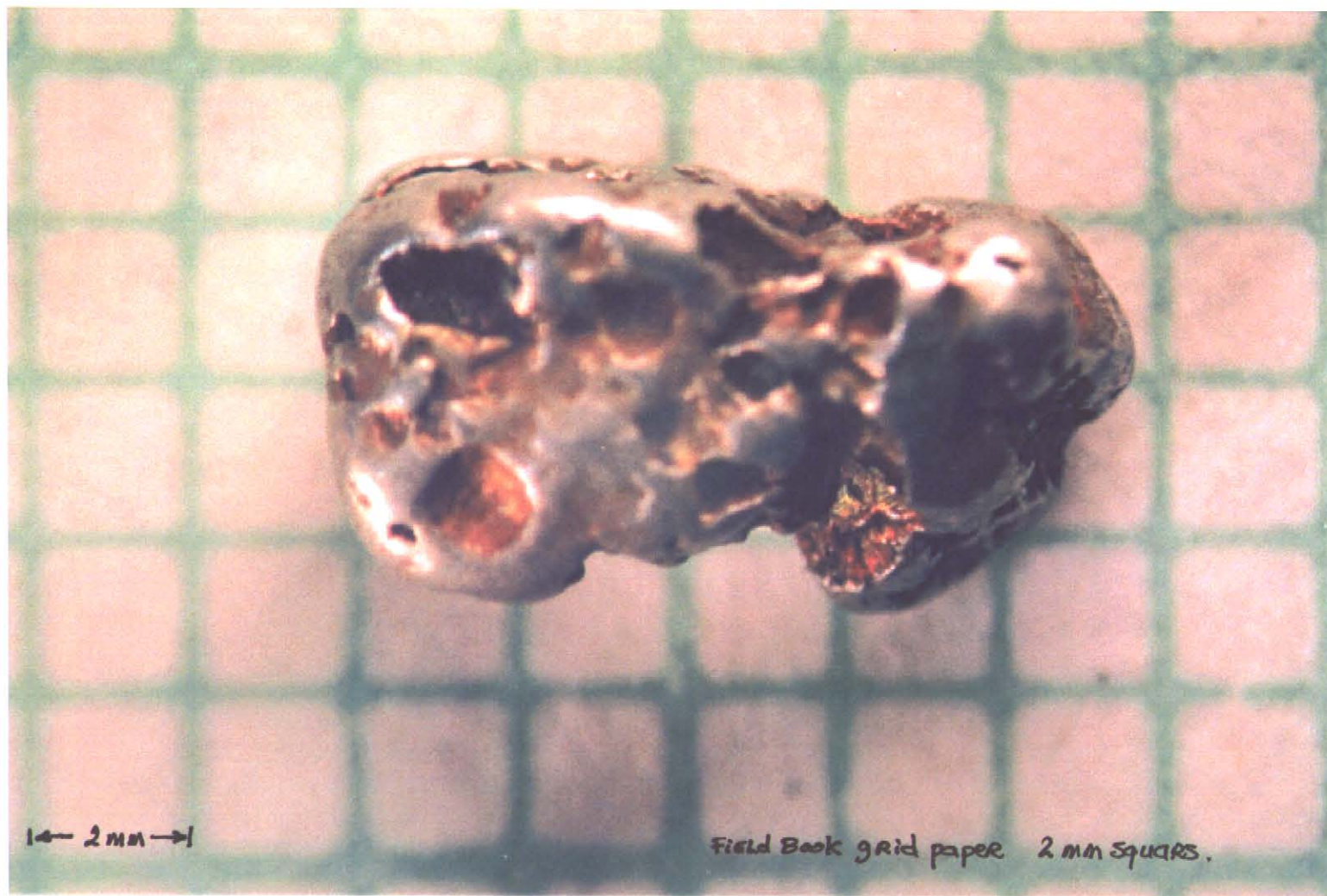
Chromite Grains in Platinum Nuggets





2mm

Platinum Nugget inside of a chunk of chromite



D. TECHNICAL REPORT



BRITISH
COLUMBIA

Ministry of Energy and Mines
Energy and Minerals Division

- One technical report to be completed for each project area.
- Refer to Program Regulations 15 to 17, page 6.

SUMMARY OF RESULTS

- This summary section must be filled out by all grantees, one for each project area

Information on this form is confidential for one year and is subject to the provisions of the Freedom of Information Act.

Name Dave JAVORSKY

Reference Number 2001/2002 P5

LOCATION/COMMODITIES

Project Area (as listed in Part A) Tulameen River Platinum Project MINFILE No. if applicable 92H NE 205

Location of Project Area NTS 92H 056 Lat 49° 31' Long 120° 51'

Description of Location and Access Tulameen River Road, Lawley Creek Forestry Access Road and Champion Creek Logging Road and Bear Creek Mining Road all seen through the project area claim blocks.

Prospecting Assistants(s) - give name(s) and qualifications of assistant(s) (see Program Regulation 13, page 6)

Local tulameen area prospectors occasionally would spend a day in the field with me. Jay Adams, Nick Savin, Frank Kramaric and Robin Brien.

Main Commodities Searched For platinum, chernite, magnetite

Known Mineral Occurrences in Project Area Gold, platinum, silver, copper, chromite magnetite. See attached mineral occurrences map.

WORK PERFORMED

1. Conventional Prospecting (area) 4 Square Kilometers
2. Geological Mapping (hectares/scale) _____
3. Geochemical (type and no. of samples) _____
4. Geophysical (type and line km) Beep Mat = Mag and VLF. 2 km
5. Physical Work (type and amount) Sampling, Digging, obtaining Samples of Platinum Nuggets
6. Drilling (no. holes, size, depth in m, total m) _____
7. Other (specify) _____

FEEDBACK: comments and suggestions for Prospector Assistance Program

I believe that the prospecting school program was very successful.

Tom Richards program was very helpful.

These program could be handled by the regional geologist with the help of the survey.

The prospectors assistance program is probably down the drain with the current government. However the program has worked and is successful in getting prospectors onto the ground.

Without the prospectors, Big Companies will do fewer grassroots projects.

D. TECHNICAL REPORT (continued)

REPORT ON RESULTS

- Those submitting a copy of an Assessment Report or a report of similar quality that covers all the key elements listed below are not required to fill out this section.
- Refer to Program Regulation 17D on page 6 for details before filling this section out (use extra pages if necessary)
- Supporting data must be submitted with the following TECHNICAL REPORT or any report accepted in lieu of.

Information on this form is confidential for one year from the date of receipt subject to the provisions of the *Freedom of Information Act*.

Name DAVE JAVORSKY

Reference Number 2001/2002/P5

1. LOCATION OF PROJECT AREA [Outline clearly on accompanying maps of appropriate scale.]

project area, Olivine-Grasshopper Mountains
along the Tulameen River of B.C.

2. PROGRAM OBJECTIVE [Include original exploration target.]

To locate a source for the platinum material
that is found in the placer in the Tulameen River -

3. PROSPECTING RESULTS [Describe areas prospected and significant outcrops/float encountered. Mineralization must be described in terms of specific minerals and how they occur. These details must be shown on accompanying map(s) of appropriate scale; prospecting traverses should be clearly marked.]

Platinum nuggets were found with crystals of
chromite attached within them.

Chromite nuggets were found with pieces of
platinum within them.

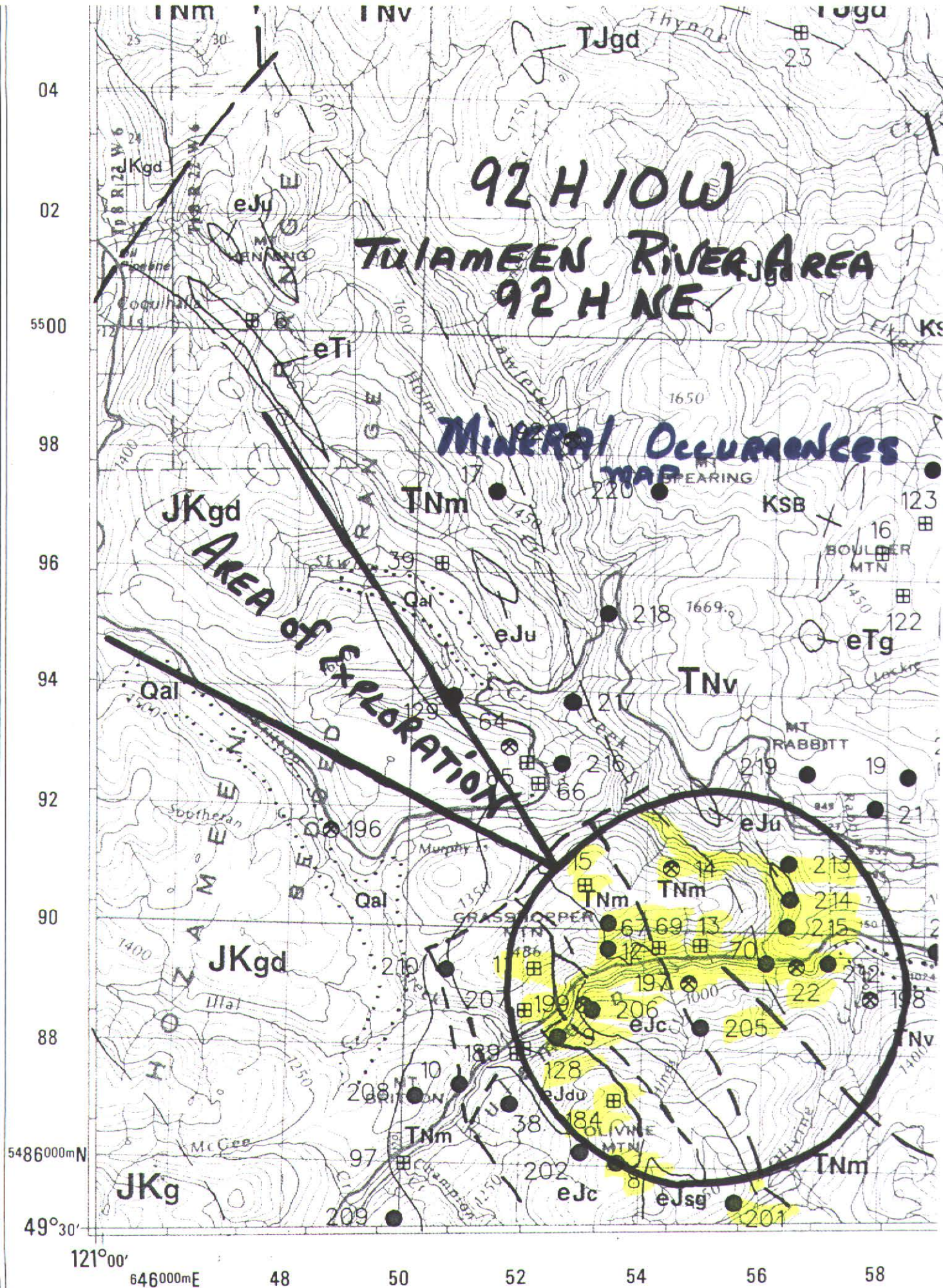
At least some of the platinum in the Tulameen River
is associated with chromite.

A Bed of chromite was found on Olivine Mountain.

Samples of this chromite assayed 0.148 ounce
platinum per ton. New showing called "JAVORSKY'S REEF"

14 new claim units were staked

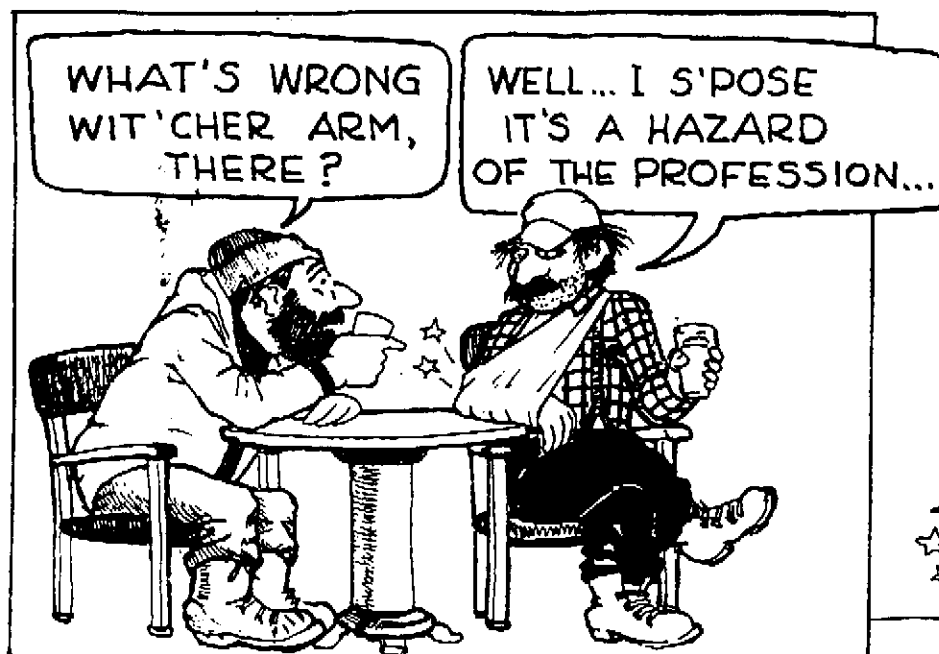
One option agreement was ~~was~~ obtained on
part of the property. So far an Air born survey
has been flown over the ground. and \$40,000
work commitment for 2002 has been included in the
contract.



Known Mineral Occurrences in the Project Area.

Minfil.	Number	Name	Commodity
92 H	008	Jenson's	Copper
	009	Sootheran	Pb, Cu, Zn, Ag.
	010	Britton	Cu, Ag.
	011	Grasshopper Mtn.	Pt, Cr, Pd.
	012	Bonanza	Cu.
	013	Sunrise	Au, Cu, Pb, Zn.
	014	Rabbit	Au, Ag, Cu, Pb, Zn.
	015	Ace	Cu, Au, Ag.
92 HNE	022	El Alamein	Au, Ag, Cu.
	067	Marcotte	Cu.
	069	Bonanza Queen L-72	Cu, Au, Ag, Pb.
	070	Enniskillen	Cu.
	128	D	Cr, Pt, Cu, Ni, Ab.
	184	Olivine Mtn.	Pt, Cr.
	197	Heins Creek Placer	Pt, Au.
92 HNE	199	Tulameen River Placer	AU, Pt.
	201	Asp 14	Cu.
	205	H. & H.	Cu, Ag, Pd, Pt, Au.
	212	Welden 1	Cu, Zn.
	213	Welden 2	Cu.
	214	Lawless Creek West Bank	Cu, Ag, Au.
	215	Mint	Cu, Pb, Zn.
	184	Olivine mts	er.

Kelly's Corner



AFTER THIRTY YEARS OF
SCRAPIN' MOSS, BREAK'IN ROCKS,
SAMPLIN' SHOWIN'S, STAKIN'
CLAIMS, BLAZIN' LINES, DRAGGIN'
E.M. CABLES, PUMPIN'
UP COLEMANS,
OPENIN' CANS,
SPLITTIN' FIREWOOD,
PLOTTIN' TRAVERSES,
WRITIN' UP NOTES.....



CORRESPONDIN' WITH ALL THEM EXPLORATION
MANAGERS, CORPORATE GEOLOGISTS AN'
COMPANY LAWYERS, FILLIN' OUT
ZILLIONS OF GOVERNMENT FORMS
AND, NATURALLY,
HOISTIN' A FEW
BEER HERE AN'
THERE....



THE DOC SAYS I'VE DEVELOPED
'PROSPECTOR'S ELBOW'!





RASSHOPPER #2

GAIL GOLD
248632

248631

GOLD MOUNT

248929

92H056

248712
2NX1W
47266

GOLD CLIFF
373522
1SX5W
237564

SHOPPER #1

248928

236586
RAND
367846
3SX2E

This Ground
was optioned
to Network
Slate #2
Mining Inc.

PGM

J6 FR
304711
208182

ANN 10

This claim
came open
and was restored
to the PGM claim

John

248991

A AIRBORNE
Magnetic
Survey has
been flown
over it.

317701

AMY #1

317700

248689

248774

248856

340212

BUCK 44

Rock Sample Descriptions with GPS Locations

Sample #

35401: Coarse grained pyroxinite, tiny blebs of black mineral. Very small disseminated bits of chalcopyrite. One of the trenches of the old Bagger showing.

GPS Nad 27, 10 u 0650655 E

UTM 5489630 A

35402: Looks like some limestone that has been cooked up. Has pyrite veinlets, with very minor chalcopyrite. Sample mixed with pyroxinite float and rubble dug up locally. Location, next to above.

There is a limestone bed close by and this sulfide^{rich} part of the ultrabasic melt probably dumped its sulfur when it came in contact with the limestone. We are on the perimeter of the Basic intrusion.

35403: Coarse grained pyroxinite with silver melatics and minor chalcopyrite.

GPS: 0650660 E

5489642 A

Sample #
35404

Looks like skarn or sediment
contact to the pyroxenite with minor
mineralization. From the 100 meter
trench in road cut GPS 10N 0650425 E
5489337 N

35405

From 1 meter north of 35404, very
fine grained cooked up sediment (?)
with tiny silvery metallics. Rusty contact
zone

35406

Very selected sample of disseminated
sulfide, silver metallics, from area of
sample 35405. Sedimentary contact
to pyroxenite on the south side.

35407.

Disseminated sulfides in contact zone
getting closer to pyroxenites. Very Rusty
weathering. There are limestones and
lime sediments close by so things really
had to have a lot of iron in order to rust
this bad. GPS. 10N 0650429 E
5489352 N

Sample #

35408

Crossing over the contact into the very coarse grained pyroxenite.

GPS: 102 0650436 E

5489352 N

High Beep mat-mag channel, 3000 counts. very coarse grained Hornblend crystals with mineral in between them. Not quite net texture. Nice day to sit in the Sun, Sampling, no bugs, Breezy sunny.

35409

Very coarse grained Hornblend pyroxenite. Not quite as large crystals as sample 35407. With disseminated mineralization between the hornblend crystals. Rubble in Roadcut. Blackish Brown weathering. GPS 102 0650436 E
5489359 N

35410

Decomposed pyroxenite rubble from Road cut with disseminated mineralization. GPS: 102 0650439 E, 5489363 N.

35411

Pyroxenite with very coarse grains of hornblend with disseminated mineralization. GPS: 102 0650437 E
5489375 N.

Sample #
35412

Very coarse grained pyroxenite
2" crystals with disseminated sulfides
and minor stringers of sulfides. Pegmatite
Should clean off the overburden between
35411 and 35413. GPS: 102 0650434 E
5489377 N

35413

Very Rusty (silicious material)
silver-metallic in a pyroxenite, coarse
grained. GPS. 0650438 E
5489391 N

35414

Same area as 35413. Silver
metallics in a pyroxenite. Coarse grained,
stringers and disseminated metallics.

35415

coarse grained pyroxenite with
disseminated sulfides. GPS 0650433 E
5489399 N

35416

Coarse grained pyroxenite with
large (1") hornblende crystals and
disseminated metallics GPS. 0650430 E
5489399 N

Sample #
35417

Coarse grained pyroxenite with
large hornblende crystals, silvery metallics.
GPS: 104 0650432 E, 5489413 N.

35418

Along Tulameen River Road. Light
blue rock. Basic. Rusty weathering, with
silver metallics. GPS. 0654940 E,
5489532 N.

35419

Light blue intrusive, fine grained
with silver metallics. GPS. 0654919 E
5489543 N

35420

Flat Bolder. Black argillite with
mineralization. GPS. 0654882 E
5489554 N

35421

Sedimentary argillite bed 5' to
six' wide striking SE-NW. Minor
mineralization squeezed between
nicola volcanics. GPS 0654916 E
5489624 N

35422

Altered volcanic? Mineralized
with silver metallics. GPS. 0654895 E
5489630 N

Sample #

35423 Mineralized iron carbonate zone.
6" wide. From 2 ft. below and parallel
to sample 35422

35424 Float from below cliffs. Black,
Basic mineralized float.
GPS. 102. 0654908E, 5489672N

35425 meter wide white quartz vein
on Bonanza claim, very narrow part of
Road cut. GPS 102: 065423E, 5489476N.

35426 Next to 35425, immediately to west,
Bluish white silicious material. Very
small dots of mineralization. 1 meter with.

35427 Between 35425 and 35426 the
Quartz is full of Rust, very hard and
contains iron carbonate. Sample 35427
is selected heavy iron carbonate.

35428 Silicious Replacement zone along
Tulameen River Road, in alteration. Across
from Eugene Rice's home. Rusty Brown halo.
GPS. 102 067063E, 5485247N

Sample #

35429

Ladder veining in Road cut in
an intrusive Rock, altered Lisuarite?
on Smarts land. Gps 1021 0657615 E
5490013 N

Nad 83 from here on out.

35430

Rambler Showings: One meter of
quartz from the west side of the vein.
Nad 83 Gps 1021 0654289 E
5490061 N

35431

same location as above (35430)
except on east side of the 1 meter
wide quartz vein.

35432

Same location as 35430, west
side of Quartz vein. Light green wall
rock to Quartz vein. Top of vein with
tiny disseminated pyrites.

35433

Wall rock on SW side of the Quartz
vein (35430) which dips to NE into hill
Blue green color. Gps 0654324 E
5490020 N

35434

1 meter wide clean quartz vein.
Gps 0654324 E, 5490020 N.

Sample #
35435

Chalcopyrite in Quartz float,
10 meters down hill from sample 35434.

35436

Wall rock to a clean Quartz vein
3" wide in a old pit. Slightly mineralized.
the wallrock is silicious and greenish blue.
GPS: 0654298 E, 5489717 N.

35437

Possible old tunnel sight. A trench
forshure on the vein. 1 to 2 meters wide.
sample of Quartz vein material.
GPS: 0654484 E, 5489926 N.

35438

Light brown dike in contact with
the quartz (sample 35437) contains
disiminated pyrite. Lots of veins running
through this dike material. The dike is
at least 4 meters wide and over 5 meters
long at this point. Location; next to 35437.

35439

Location as above. Sample of the
stockwork of veins from within the dike
sample 35438. Weathering tan, the fresh
rock is Bluish green with disiminated pyrite.

Sample #
35440

Same location as sample 35437
Very weathered, decomposed, semi massive,
Sulfides. Pyrite in wall rock very Rusty.

35441

Dump at entrance to open cut-
Portal(?) Gneissic argillite -
Gps. 10 u 0654480E, 5489980 N.

35442

Next to 35441, Gneissic argillite
mineralized with pyrite, mixed with
quartz vein.

35443

Location same as 35441. Fine
grained dike rock from the vein's
wall rock. With finely disseminated
pyrite sulfides.

35444

Large crystals Hornblende clinopyroxene
with Silver gray metallics, probably pyrite
close to Au2 post Gps: 0654245E
5489655 N.

35445

Sulfide contact(?) Zone in grabo
on Britton mountain in road cut. Silver Metallics
Gps. 10 u 0651025E, 5487509 N

Sample #

35446

On Heins Creek Trail, below old campsite. A Tan weathering Basic Rock, with black specks of ? (chromite) very Rusty. Gps: 0654400E, 5488818N.

35447

Tan weathering with quartz and Black crystals. Either chromite or specular Hematite. Gps. 0654405E
5488733N.

35448

Basic Rock, asbestos, Rust, with Serpentine alteration. Gps 0654259E
5483969N.

35449

35450 Bleached Dunite(?) with +/- chromite, North nose of summit of Olivine Mountain. Redish orange weathering Rust of chromite. Gps: 0653346E, 5487253N.

35451

Shear zone in Dunite(?) running 20-200 magnetic North. Serpentine, asbestos chromeite, light blue color to cooked rock. Gps: 0653310E, 5487213N.

Sample #

35452

Possible Breccia pipe claps of
green and blue gabbro. GPS 0654107E
5489535N

35453

Old Halliday blasted quarry. Olivine
Rich Rock with chromite shillens in the
Rock +5% chromite. Very weathered

- 5899 pp #
0.148 opt #

GPS: 0653275E, 5487163N,
MINFILE # 92HNE 184?

35454

In Tulameen River bed, below
slide at narrow spot in Road. At contact
with the Basic intrusive and the Volcanics
some olivine some altered blue green gabbro
Lots of veining going in all directions.
GPS 10X. 0654107E, 5489535N.

35455:

Unable to get gps reading from
here on up river as the steepness of the
cliffs blocks the satellites. Sulfide zone
in walls of River on the North Face. A
0.3 meter wide zone of NET Texture sulfides.
Painted number of Sample on the Rock face.

35456

Similar to 35455 except about 50
meters down stream to the East. Net Texture
Sulfides. GPS: 0653867E, 5489451N

Sample #

35457:

Sulfides in pyroxnite. Very
Rusty. Location similar to 35456.
GPS. 0653867 E, 5489451 N.

35458

On west side of claim line.
Olivine clino pyroxnite with silver
metallics. GPS 0652608 E
5488988 N

35459

Dunite with silver metallics. 2 little
dry lake beds. Someone has dug a
shaft in the easterly lake, perhaps to
get water. GPS 0651355 E
5489520 N.

This could be a possible breccia pipe.
The matrix appears to have weathered to
a mud and the claps are fresh.

P. 02

FAX NO. 6042531716

JAN-11-2002 FRI 09:27 AM ACME ANALYTICAL LAB

ACME ANALYTICAL LABORATORIES LTD.
(ISO 9002 Accredited Co.)

852 E. HASTINGS ST. VANCOUVER BC V6A 1R6

PHONE (604) 253-3158 FAX (604) 253-1716

AA
11

GEOCHEM PRECIOUS METALS ANALYSIS

Javorsky, Dave File # A102741

818 - 470 Granville St., Vancouver BC V6C 1V5 Submitted by: Dave Javorsky

AA
11

SAMPLE#	Au** ppb	Pt** ppb	Pd** ppb	Rh** ppb
35401	2	50	38	<5
35402	9	<2	2	<5
35403	<2	16	20	<5
35404	5	<2	<2	<5
35405	<2	3	<2	<5
35406	<2	6	<2	<5
35407	4	12	11	<5
35408	6	5	<2	<5
35409	4	3	<2	<5
35411	8	28	82	<5
35412	7	75	188	5
35413	4	20	31	<6
35414	4	51	111	<5
RE 35414	6	53	119	<5
35415	5	4	3	5
35416	8	109	217	<5
35417	10	109	190	<5
35418	<2	3	<2	<5
35419	<2	<2	<2	<5
35424	<2	3	<2	5
STANDARD FA-10R	484	467	467	21

GROUP 38 - FIRE GEOCHEM AU, PT, PD, RH - 30 GM SAMPLE FUSION, DORE DISSOLVED IN AQUA - REGIA, ICP ANALYSIS. UPPER LIMITS = 10 PPM.
 - SAMPLE TYPE: ROCK R150 60C Samples beginning 'RE' are Reruns and 'RRE' are Reject Reruns.

DATE RECEIVED: AUG 17 2001

DATE REPORT MAILED:

Aug 24/01

SIGNED BY:

C. L.

D. TOYE, C. LEONG, J. WANG; CERTIFIED B.C. ASSAYERS

All results are considered the confidential property of the client. Acme assumes the liabilities for actual cost of the analysis only.

Data FA

YJW

P. 03

FAX NO. 6042531716

JAN-11-2002 FRI 09:28 AM ACME ANALYTICAL LAB

ACME ANALYTICAL LABORATORIES LTD.
(ISO 9002 Accredited Co.)

852 E. HASTINGS ST. VANCOUVER BC V6A 1R6

PHONE (604) 253-3158 FAX (604) 253-1716

AA
LL

GEOCHEMICAL ANALYSIS CERTIFICATE

AA
LLJavorsky, Dave File # A102742
818 - 470 Granville St., Vancouver BC V6C 1V5 Submitted by: Dave Javorsky

SAMPLE#

Ag Au**
ppm ppb35420
35421
35422
35423
35425.3 8
<.3 2
<.3 4
<.3 7
<.3 835426
35427
35428
35429
RE 35429<.3 13
<.3 43
<.3 <2
<.3 2
<.3 5

STANDARD C3/AU-R

5.7 482

GROUP 1D - 0.50 GM SAMPLE LEACHED WITH 3 ML 2-2-2 HCL-HNO3-H2O AT 95 DEG. C FOR ONE HOUR, DILUTED TO 10 ML, ANALYSED BY ICP-ES.
 UPPER LIMITS - AG, AU, HG, W = 100 PPM; MO, CO, CD, SB, BI, TH, U & B = 2,000 PPM; CU, PB, ZN, NI, MN, AS, V, LA, CR = 10,000 PPM.
 ASSAY RECOMMENDED FOR ROCK AND CORE SAMPLES IF CU PB ZN AS > 1%, AG > 30 PPM & AU > 1000 PPB
 - SAMPLE TYPE: ROCK R150 60C AU** GROUP 3B - 30.00 GM SAMPLE ANALYSIS BY FA/ICP.
 Samples beginning 'RE' are Retuns and 'RRE' are Relect Retuns.

DATE RECEIVED: AUG 17 2001 DATE REPORT MAILED: Aug 24/01 SIGNED BY: C.L. D. TOYE, C. LEONG, J. WANG; CERTIFIED B.C. ASSAYERS

All results are considered the confidential property of the client. Acme assumes the liabilities for actual cost of the analysis only.

Data LFA 1/11/01

P. 04

FAX NO. 6042531716

JAN-11-2002 FRI 09:29 AM ACME ANALYTICAL LAB

ACME ANALYTICAL LABORATORIES LTD.
(ISO 9002 Accredited Co.)

852 E. HASTINGS ST. VANCOUVER BC V6A 1R6

PHONE (604) 253-3158 FAX (604) 253-1716

AA

GEOCHEMICAL ANALYSIS CERTIFICATE

AA

Javorsky, Dave File # A102999

818 - 470 Granville St., Vancouver BC V6C 1V5 Submitted by: Dave Javorsky

SAMPLE#	Ag ppm	Au** ppb
35430	<.3	10
35431	<.3	<2
35432	<.3	<2
35433	<.3	5
35434	.9	116
35435	12.8	121
35436	.5	26
35437	<.3	44
35438	.4	142
35439	<.3	34
RE 35439	<.3	28
35440	<.3	<2
35441	<.3	39
35442	1.0	668
35443	<.3	71
STANDARD C3/AU-R	6.2	477
STANDARD G-2	<.3	-

GROUP 10 - 0.50 GM SAMPLE LEACHED WITH 3 ML 2-2-2 HCL-HNO3-H2O AT 95 DEG. C FOR ONE HOUR, DILUTED TO 10 ML, ANALYSED BY ICP-ES.
 UPPER LIMITS - AG, AU, HG, W = 100 PPM; MO, CO, CD, SB, BI, TH, U & B = 2,000 PPM; CU, PB, ZN, NI, MN, AS, V, LA, CR = 10,000 PPM.
 ASSAY RECOMMENDED FOR ROCK AND CORE SAMPLES IF CU PB ZN AS > 1%, AG > 30 PPM & AU > 1000 PPB
 - SAMPLE TYPE: ROCK R150 60C AU** GROUP 3B - 30.00 GM SAMPLE ANALYSIS BY FA/ICP.
 Samples beginning 'RE' are Reruns and 'RRE' are Reject Reruns.

DATE RECEIVED: SEP 4 2001

DATE REPORT MAILED:

SIGNED BY:

D. TOYE, C. LEONG, J. WANG; CERTIFIED B.C. ASSAYERS

All results are considered the confidential property of the client. Acme assumes the liabilities for actual cost of the analysis only.

Data FA Y/N

P. 05

FAX NO. 6042531716

JAN-11-2002 FRI 09:29 AM ACME ANALYTICAL LAB

ACME ANALYTICAL LABORATORIES LTD.
(ISO 9002 Accredited Co.)

852 E. HASTINGS ST. VANCOUVER BC V6A 1R6

PHONE (604) 253-3158 FAX (604) 253-1716

AA
11

GEOCHEM PRECIOUS METALS ANALYSIS

Javorsky, Dave File # A103000

818 - 470 Granville St., Vancouver BC V6C 1V5 Submitted by: Dave Javorsky

AA
11

SAMPLE#	Au** ppb	Pt** ppb	Pd** ppb
35444	<2	2	4
35445	<2	9	9
RE 35445	<2	10	9
STANDARD FA-10R	485	451	476

GROUP 3B - FIRE GEOCHEM AU, PT, PD - 30 GM SAMPLE FUSION, DORE DISSOLVED IN AQUA - REGIA, ICP ANALYSIS. UPPER LIMITS = 10 PPM.

- SAMPLE TYPE: ROCK R150 60C Samples beginning 'RE' are Reruns and 'RRE' are Reject Reruns.

DATE RECEIVED: SEP 4 2001 DATE REPORT MAILED:

SIGNED BY

D. TOYE, C. LEONG, J. WANG; CERTIFIED B.C. ASSAYERS

All results are considered the confidential property of the client. Acme assumes the liabilities for actual cost of the analysis only.

Data 2 FA

P. 06

FAX NO. 6042531716

JAN-11-2002 FRI 09:30 AM ACME ANALYTICAL LAB

ACME ANALYTICAL LABORATORIES LTD.
(ISO 9002 Accredited Co.)

852 E. HASTINGS ST. VANCOUVER BC V6A 1R6

PHONE (604) 253-3158 FAX (604) 253-1716

AA
LL

GEOCHEM PRECIOUS METALS ANALYSIS

AA
LL

Javorsky, Dave File # A103161

818 - 470 Granville St., Vancouver BC V6C 1V5 Submitted by: Dave Javorsky

SAMPLE#	Au** ppb	Pt** ppb	Pd** ppb
SI	<2	<2	2
35446	<2	20	<2
35447	<2	177	10
35448	<2	29	4
35449	<2	48	2
35450	<2	737	3
35452	2	17	7
35453	8	5894	27
35454	<2	8	<2
35455	<2	47	130
RE 35455	2	48	124
35456	20	210	508
35457	6	204	196
35458	3	2	4
35459	5	181	<2
STANDARD FA-10R	470	471	467

GROUP 38 - FIRE GEOCHEM AU, PT, PD - 30 GM SAMPLE FUSION, DORE DISSOLVED IN AQUA - REGIA, ICP ANALYSIS. UPPER LIMITS = 10 PPM.

- SAMPLE TYPE: ROCK R150 60C Samples beginning 'RE' are Reruns and 'RRE' are Reject Reruns.DATE RECEIVED: SEP 14 2001 DATE REPORT MAILED: *Sept 24/01* SIGNED BY: *C. Leong* TOYE, C. LEONG, J. WANG; CERTIFIED B.C. ASSAYERS

All results are considered the confidential property of the client. Acme assumes the liabilities for actual cost of the analysis only.

Data *P* FA *Y089*

ACME ANALYTICAL LABORATORIES LTD.
(ISO 9002 Accredited Co.)

852 E. HASTINGS ST. VANCOUVER BC V6A 1R6

PHONE (604) 253-3158 FAX (604) 253-1716

AA
LL

WHOLE ROCK ICP ANALYSIS

AA
LL

Javorsky, Dave File # A103161R

818 470 Granville St., Vancouver BC V6C 1V5 Submitted by: Dave Javorsky

SAMPLE#	SiO2	Al2O3	Fe2O3	MgO	CaO	Na2O	K2O	TiO2	P2O5	MnO	Cr2O3	Ba	Ni	Sr	Zr	Y	Nb	Sc	LOI	TOT/C	TOT/S	SUM
	%	%	%	%	%	%	%	%	%	%	%	ppm	ppm	ppm	ppm	ppm	ppm	ppm	%	%	%	%
35450	25.33	.34	9.55	35.30	.34	<.01	.02	.04	.08	.16	2.399	8	830	<10	37	<10	<10	3	26.2	6.10	<.01	99.88
35452	45.00	1.02	9.26	20.66	16.72	.09	.02	.16	.04	.13	.067	15	181	87	11	<10	<10	54	6.7	1.26	.12	99.91
35453	26.73	2.16	19.64	32.54	.36	<.01	<.02	.17	.06	.26	7.382	<5	911	<10	37	38	<10	5	10.3	.37	<.01	99.74
RE 35453	26.82	2.19	19.79	32.54	.39	<.01	<.02	.17	.14	.26	7.332	<5	911	<10	42	39	<10	5	10.0	.37	<.01	99.77
STANDARD SO-17/CSB	61.36	14.13	5.82	2.34	4.65	4.10	1.37	.59	1.00	.51	.463	399	25	297	340	28	19	23	3.4	2.42	5.35	99.87

GROUP 4A - 0.200 GM SAMPLE BY LIBO2 FUSION, ANALYSIS BY ICP-ES. LOI BY LOSS ON IGNITION.
TOTAL C & S BY LECO. (NOT INCLUDED IN THE SUM)

- SAMPLE TYPE: ROCK PULP

Samples beginning 'RE' are Reruns and 'RRE' are Reject Reruns.

DATE RECEIVED: OCT 11 2001 DATE REPORT MAILED: Oct 22/01 SIGNED BY: C. L. D. TOYE, C. LEONG, J. WANG; CERTIFIED B.C. ASSAYERS

All results are considered the confidential property of the client. Acme assumes the liabilities for actual cost of the analysis only.

Data FA

P. 08

FAX NO. 6042531716

JAN-11-2002 FRI 09:32 AM ACME ANALYTICAL LAB

ACME ANALYTICAL LABORATORIES LTD.
(ISO 9002 Accredited Co.)

852 E. HASTINGS ST. VANCOUVER BC V6A 1R6

PHONE (604) 253-3158 FAX (604) 253-1716

AA

ASSAY CERTIFICATE

AA

Javorsky, Dave File # A103161R2
818 - 470 Granville St., Vancouver BC V6C 1V5 Submitted by: Dave Javorsky

SAMPLE#	S.Wt gm	NPt mg	-Pt opt	TotPt opt
35453	215	.02	.145	.148

-PT : -150 PT BY FIRE ASSAY FROM AU INQUART. DUPPT: PT DUPLICATED FROM -150 MESH. NPT - NATIVE PT, TOTAL SAMPLE FIRE ASSAY.
- SAMPLE TYPE: ROCK REJ.

DATE RECEIVED: OCT 11 2001 DATE REPORT MAILED: Oct 22/01 SIGNED BY: *C. Leong* D. TOYE, C. LEONG, J. WANG; CERTIFIED B.C. ASSAYERS

All results are considered the confidential property of the client. Acme assumes the liabilities for actual cost of the analysis only.

Data FA

WST

P. 09

FAX NO. 6042531716

JAN-11-2002 FRI 09:32 AM ACME ANALYTICAL LAB

ACME ANALYTICAL LABORATORIES LTD.
(ISO 9002 Accredited Co.)

852 E. HASTINGS ST. VANCOUVER BC V6A 1R6

PHONE (604) 253-3158 FAX (604) 253-1716

AA

ASSAY CERTIFICATE

AA

Javorsky, Dave File # A103161R2
818 - 470 Granville St., Vancouver BC V6C 1V5 Submitted by: Dave Javorsky

SAMPLE#	S.Wt	NPd	-Pd	TotPd
	gm	mg	opt	opt
35453	215	<.00	.001	.001

-PD : -150 PD BY FIRE ASSAY FROM AU INQUART. DUPPD: PD DUPLICATED FROM -150 MESH. NPd - NATIVE PD, TOTAL SAMPLE FIRE ASSAY.
- SAMPLE TYPE: ROCK REJ.

DATE RECEIVED: OCT 11 2001 DATE REPORT MAILED: Oct 22/01 SIGNED BY: *C. Leong* D. TOYE, C. LEONG, J. WANG; CERTIFIED B.C. ASSAYERS

All results are considered the confidential property of the client. Acme assumes the liabilities for actual cost of the analysis only.

Date FA *YIN*

P. 10

FAX NO. 6042531716

JAN-11-2002 FRI 09:33 AM ACME ANALYTICAL LAB

ACME ANALYTICAL LABORATORIES LTD.
(ISO 9002 Accredited Co.)

852 B. HASTINGS ST. VANCOUVER BC V6A 1R6

PHONE (604) 253-3158 FAX (604) 253-1716

AA

ASSAY CERTIFICATE

Javorsky, Dave File # A103161R2

818 - 470 Granville St., Vancouver BC V6C 1V5 Submitted by: Dave Javorsky

AA

SAMPLE#	S.Wt	NRh	-Rh	TotRh
	gm	mg	opt	opt
35453	215	<.00	.001	.001

-RH : -150 RH BY FIRE ASSAY FROM AU INQUART. DUPRH: RH DUPLICATED FROM -150 MESH. NRH - NATIVE RH, TOTAL SAMPLE FIRE ASSAY.
- SAMPLE TYPE: ROCK REJ.

DATE RECEIVED: OCT 11 2001 DATE REPORT MAILED: *Oct 22/01* SIGNED BY: *C. Leong* D. TOYE, C. LEONG, J. WANG; CERTIFIED B.C. ASSAYERS

All results are considered the confidential property of the client. Acme assumes the liabilities for actual cost of the analysis only.

Data FA

YWS

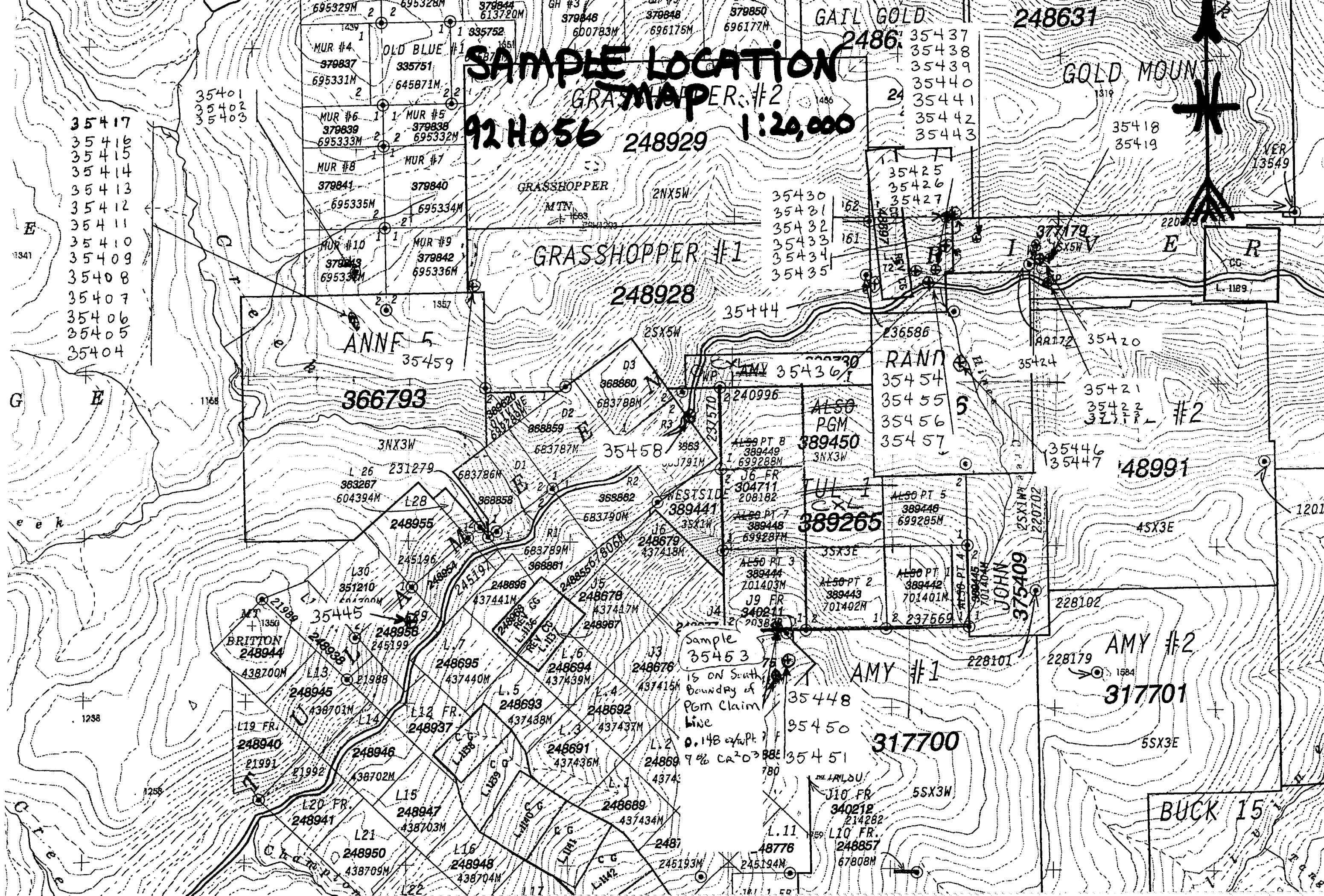


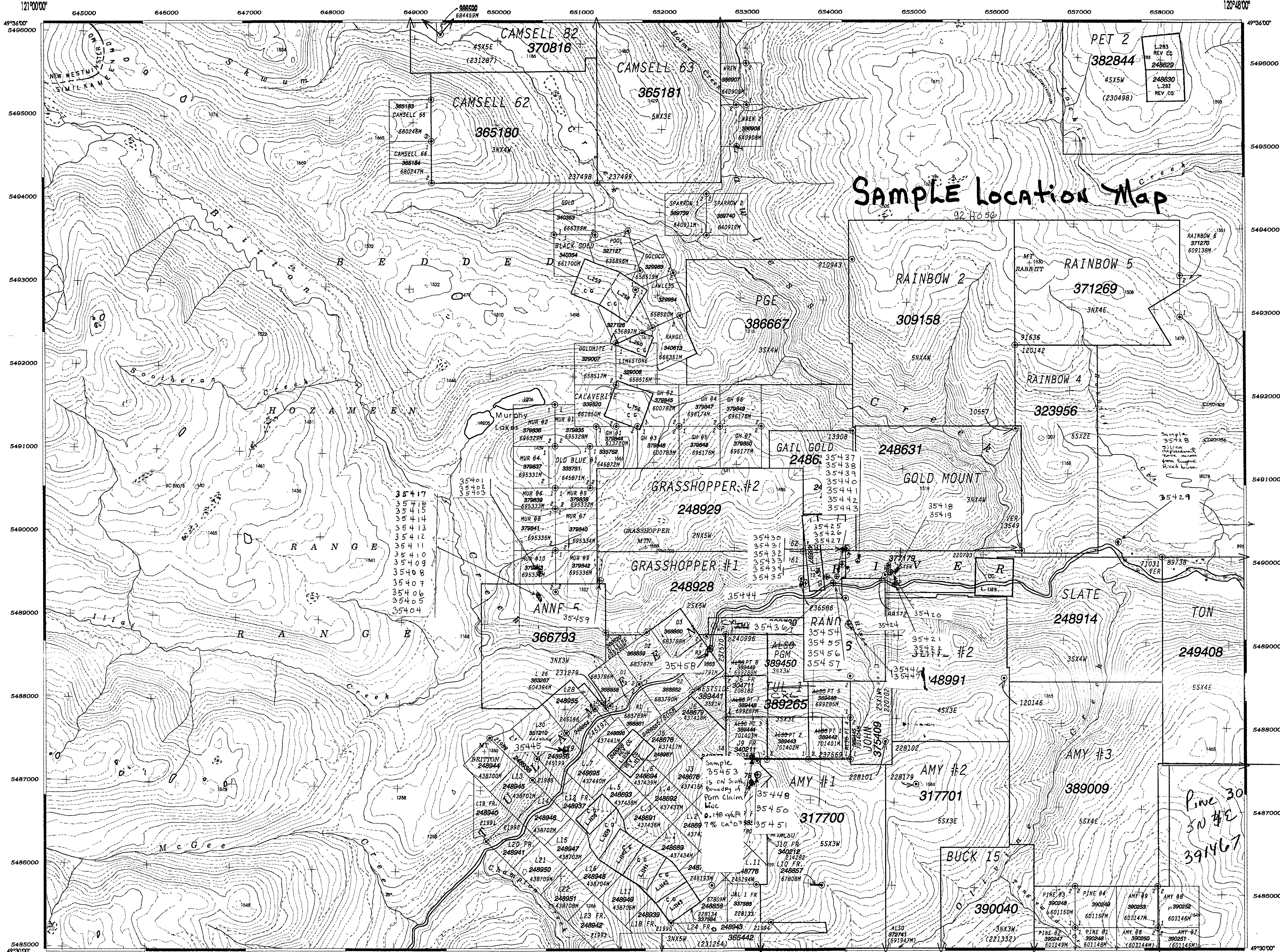
Dave J. Javorsky Prospecting

818 - 470 Granville Street
Vancouver, B.C. V6C 1V5
604-733-6022



SAMPLE LOCATION
GRASSHOPPER #2
92 H056 248929 1:20,000





M092H056

MINERAL LEGEND

ADMINISTRATIVE AREAS
MINING DIVISION(S): NEW WESTMINSTER & SIMILKAMEEN
LAND DISTRICT(S): YALE DIVISION OF YALE

ADMINISTRATIVE BOUNDARIES
MINING DIVISION
LAND DISTRICT
PROVINCIAL BOUNDARY
INTERNATIONAL BOUNDARY
NO STAKING RESERVE
ECOLOGICAL RESERVE, PARK OR RECREATION AREA
INDIAN RESERVE (SEE NOTES 1)
CONDITIONAL AREA

MINERAL TENURES
MINERAL CLAIM
MINING LEASE
INDUSTRIAL MINERAL TITLE
MINING LEASE
INDUSTRIAL MINERAL
CLAIM NAME
TENURE NUMBER
TAG NUMBER
CLAIM SIZE (UNITS)
LEGAL POST
WITNESS POST
TENURE HOOK
VERIFIED
SURVEYED
GLOBAL POSITIONING SYSTEM
CROWN GRANTED 2 POST CLAIM
F LOT (Real Estate Lot)
REVERTED C.G. 2 POST CLAIMS
Reverted C.G. (Not Open for Staking)
BID LOT
R.C.G. (Issued under a former Act)

PLANIMETRIC LEGEND
DRAINAGE AND RELATED FEATURES
COASTLINE, DEFINITE
INDEFINITE
RIVER / STREAM, DEFINITE
INDEFINITE
LAKE, DEFINITE
LAKE, INDEFINITE
DAM
DYKE
SAND / GRAVEL BAR
FLOODED LAND
SWAMP / MARSH
FALLS / RAPIDS
ICE FIELD / GLACIER
RESERVOIR, DEFINITE
RESERVOIR, INDEFINITE
CLIFF / SCARP
ESKER
SLIDE
LANDMARK FEATURE
MINE
PIER / WHARF
PIPELINE
QUARRY
TRANSMISSION LINE
TRANSPORTATION FEATURES
AIRFIELD
OUTLINE / SEISMIC LINE
RAIL LINE
RAIL LINE (ABANDONED)
ROAD, SURFACE PAVED
ROAD, SURFACE LOOSE
ROAD, SURFACE ROUGH / TRAIL
BRIDGE
CONTROL DATA
HORIZONTAL CONTROL POINT, MARKED
VERTICAL CONTROL POINT, MARKED
MAJOR CONTOUR
MINOR CONTOUR
CONTOUR INTERVAL - 20 METRES

DISCLAIMER

This map is prepared only as a guide to the location of mineral tenure as shown on the locator's sketches. For current or more specific information, application should be made to the appropriate Gold Commissioner.

SOURCES OF INFORMATION

Planimetric and topographic information is obtained from the Terrestrial Resource Information Management (TRIM) base mapping program. For more information contact Geographic Data BC, Ministry of Environment, Lands and Parks. Source Date: 1997 OCT 08
Cadastral produced from spatial data is obtained from the Cadastral Data Management System (CDMS). For more information contact the Surveyor General Branch, Ministry of Environment, Lands and Parks. Source Date: 2000 MAR 06
This map depicts only the mineral tenure theme. For the placer tenure theme see appropriate placer map and for the coal tenure theme see appropriate coal map.
Additional tenure information is available on the Internet: <http://www.em.gov.bc.ca/mlda>

NOTES FROM MINERAL LEGEND

- Staking is not permitted within Indian Reserves.
- Staking is not permitted over Section 23 Recreation Areas due to a No Staking Reserve. (B.C. Reg. 97/97)
- For Uranium and Thorium Regulations, please refer to Mines Act.

MISCELLANEOUS NOTES

Staking is not permitted over all Crown Granted Lots issued since August 15, 1985. (B.C. Reg. 138/94)
Staking is not permitted within tidal waters. (B.C. Reg. 100/98)
Surface lots with mineral rights are not shown.
Please refer to the Mineral Tenure Act, Mineral Tenure Act Regulation, Mines Act, and the Guide to Staking in British Columbia for more complete information.

GOLD COMMISSIONER OFFICES

CARIBOO
102 350 Berrow Street
Quebec BC V2L 2C1
Public Query: (250) 692-4301
FAX: (250) 692-4314
Mining Division: Cariboo

VANCOUVER ISLAND
3001 1810 Blenheim Street
P.O. Box 9322 Stn Prov Govt
Victoria BC V8W 9A5
Public Query: (250) 952-0542
FAX: (250) 952-0541
Mining Division: Alberni, Nanaimo, and Victoria

OMINECA
1020 Murray Street Bag 5000
Smithers BC V0J 2H0
Public Query: (250) 847-7207
FAX: (250) 847-7232
Mining Division: Omineca

COAST / LIARD
302 885 Homby Street
Vancouver BC V6Z 2G8
Public Query: (604) 680-2872
FAX: (604) 680-2853
Mining Divisions: Atlin, Clinton, Liard, Lillicoet, Skeena, New Westminster, and Vancouver

KAMLOOPS / OKANAGAN
250 455 Columbia Street
Kamloops BC V2C 8K4
Public Query: (250) 828-4540
FAX: (250) 828-4233
Mining Divisions: Kamloops, Nicola, Osoyoos, Revelstoke, Similkameen, and Vernon

EAST KOOTENAY
100 Cranbrook Street North
Cranbrook BC V1C 5P6
Public Query: (250) 428-1211
FAX: (250) 428-1253
Mining Divisions: Fort Steele and Golden

KOOTENAY
310 Ward Street
Nelson BC V1L 5S4
Public Query: (250) 354-6103
FAX: (250) 354-6407
Mining Divisions: Greenwood, Nelson, Siccan, and Trail Creek

DEC 17 2001
GOVERNMENT AGENT
KAMLOOPS

GUIDE TO THE NTS AND BCGS MAPPING SYSTEMS

NATIONAL TOPOGRAPHIC SYSTEM (NTS)
1:50,000 NTS MAPSHEET
094H05

BRITISH COLUMBIA GEOGRAPHIC SYSTEM (BCGS)
1:20,000 BCGS MAPSHEET
094H070

1 CLAIM UNIT
1640.42 ft
25 ha
61.78 ac
500 m

(UTM) UNIVERSAL TRANSVERSE MERCATOR
CROSS HAIRS EVERY 1000 METRES.

MAGNETIC DECLINATION AS OF 2000
T.N. 19° 15'

1000 m 0 1 km

ORIGINAL PRODUCED AT 1:20,000
LAST MAP UPDATE: 2001 DEC 03
Version Number:0010

INDEX TO ADJOINING MAPS

092H065	092H066	092H067
092H055	092H056	092H057
092H045	092H046	092H047

MINISTRY OF ENERGY AND MINES

ENERGY AND MINERALS DIVISION
MINERAL TITLES BRANCH

MINERAL TITLES REFERENCE MAP

M092H056

1983 North American Datum
U.T.M. Coordinate System - Zone 10
Compilation Date: 2000 APR 14