

100 Data Layers

Geology

☒ Bedrock Geology (1:5M, 1M, 250K)

☐ Map Indexes, Downloads, Legend

☐ Basin Outlines / Earthquakes

☐ Tectonic Plates & Faults

☐ Selected Detailed Maps (1:30K)

☐ Raster & AutoCAD Maps

Databases

☒ Mineral & Aggregate Potential

☐ Mineral Occurrences - MINFILE

☐ Assessment Reports - ARIS

☒ Regional Geochemistry - RGS

☐ Coal Assessment Reports, Boreholes

☐ Fisheries Data & Reports

☐ Birds & Mammals

☐ Aquifers in BC / Climate Stations

Tenure

☐ Crown Grant Raster (view & download)

☒ Mineral Tenure, link to Titles data (MIDA)

☐ Petroleum Tenure & PNG Wells

☐ Oil & Gas Pipelines / PNG Grid

Basemap

☐ Contours (1:1M to 1:20K), Bathymetry

☒ Rivers / Lakes / Glaciers (1:6M to 1:20K)

☐ Road / Rail (1:6M to 1:20K)

☐ Map Grids / UTM Grids / Gazetteer

☐ DEM Shaded Relief

☐ LandSat / Aeromag / Gravity

Administrative

☐ First Nations / Land Use Planning

☐ Parks / Forestry / Mining Regions

☐ Cities / Communities / Municipalities

Functions

Link & Download Attribute Data

☐ Zoom / Bookmark / Print to Scale

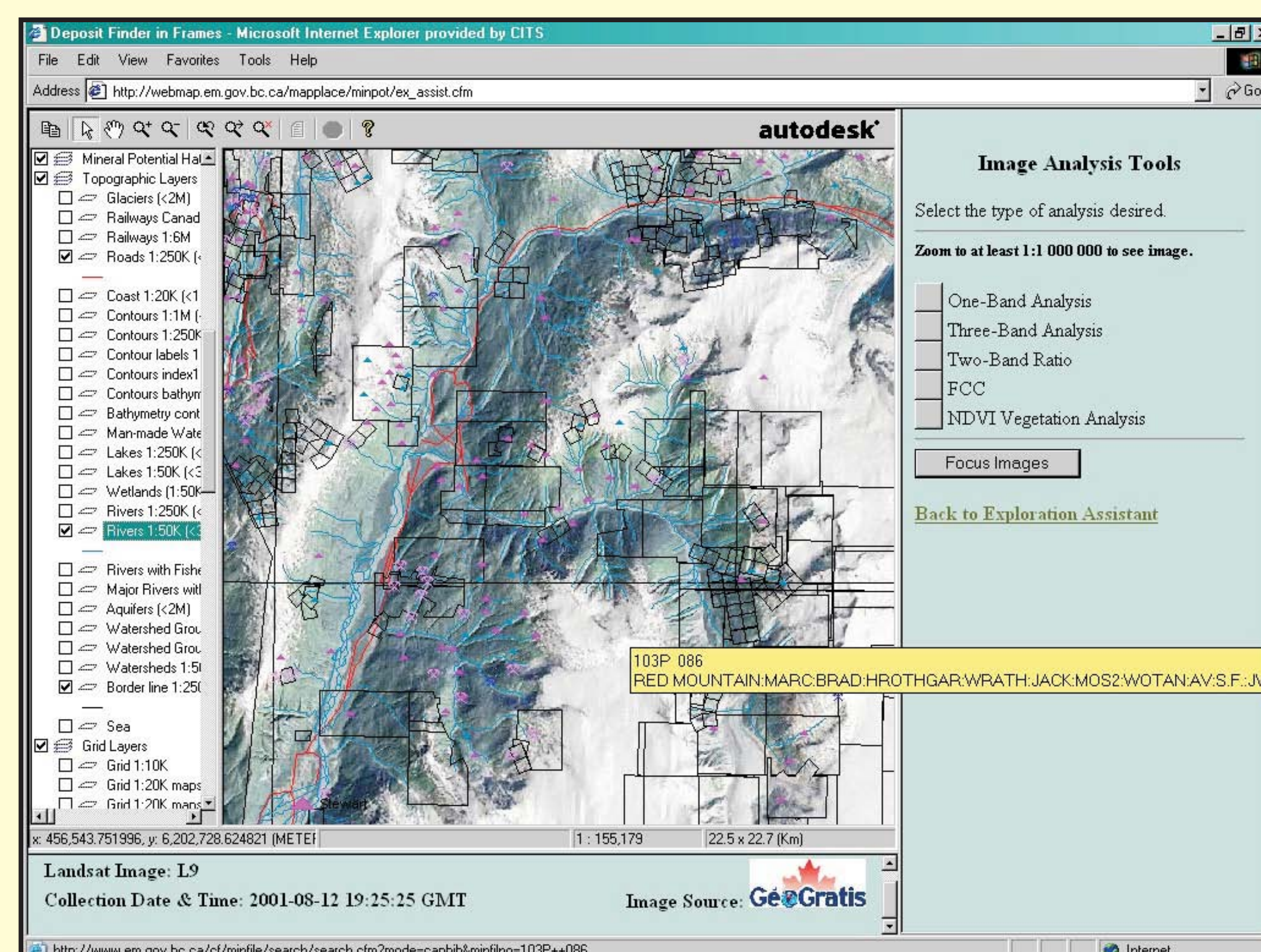
☐ Select Objects within Polygons

☐ Input / Search / Report / Copy

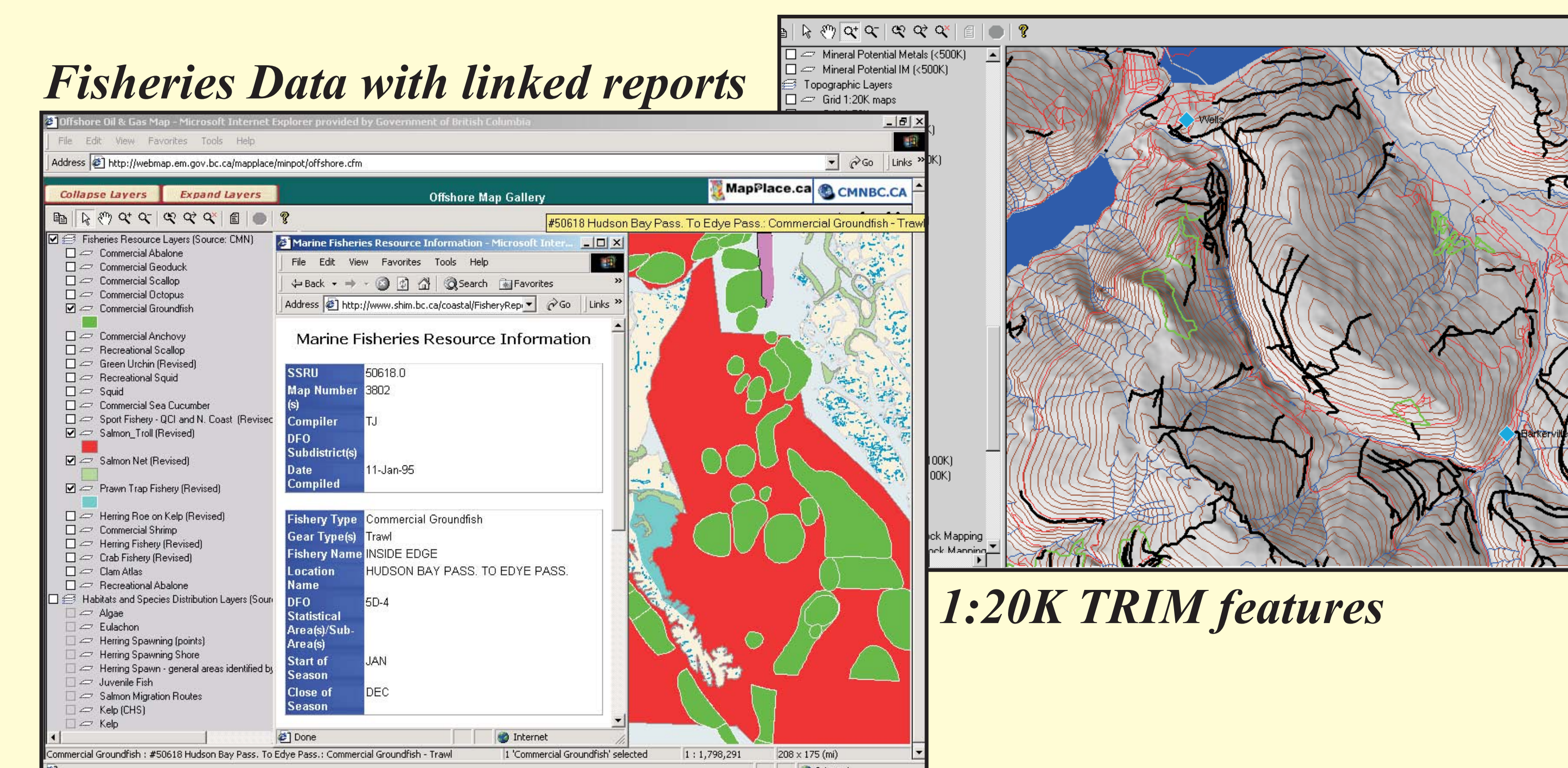
☐ Buffers, Distance, Cursor Location

☐ Download Geospatial Data

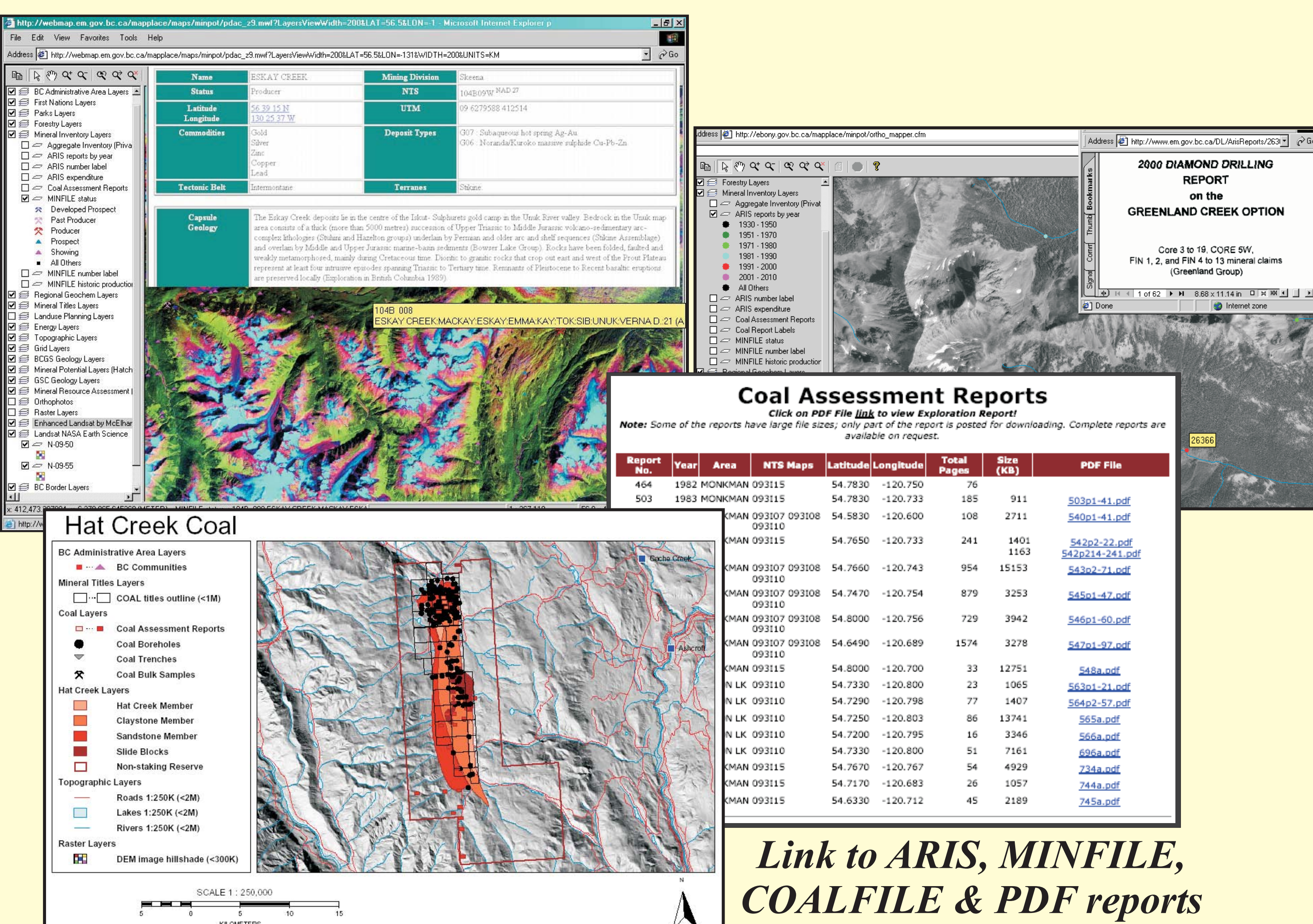
Create Interactive Maps & Reports; Access Comprehensive Geoscience Databases



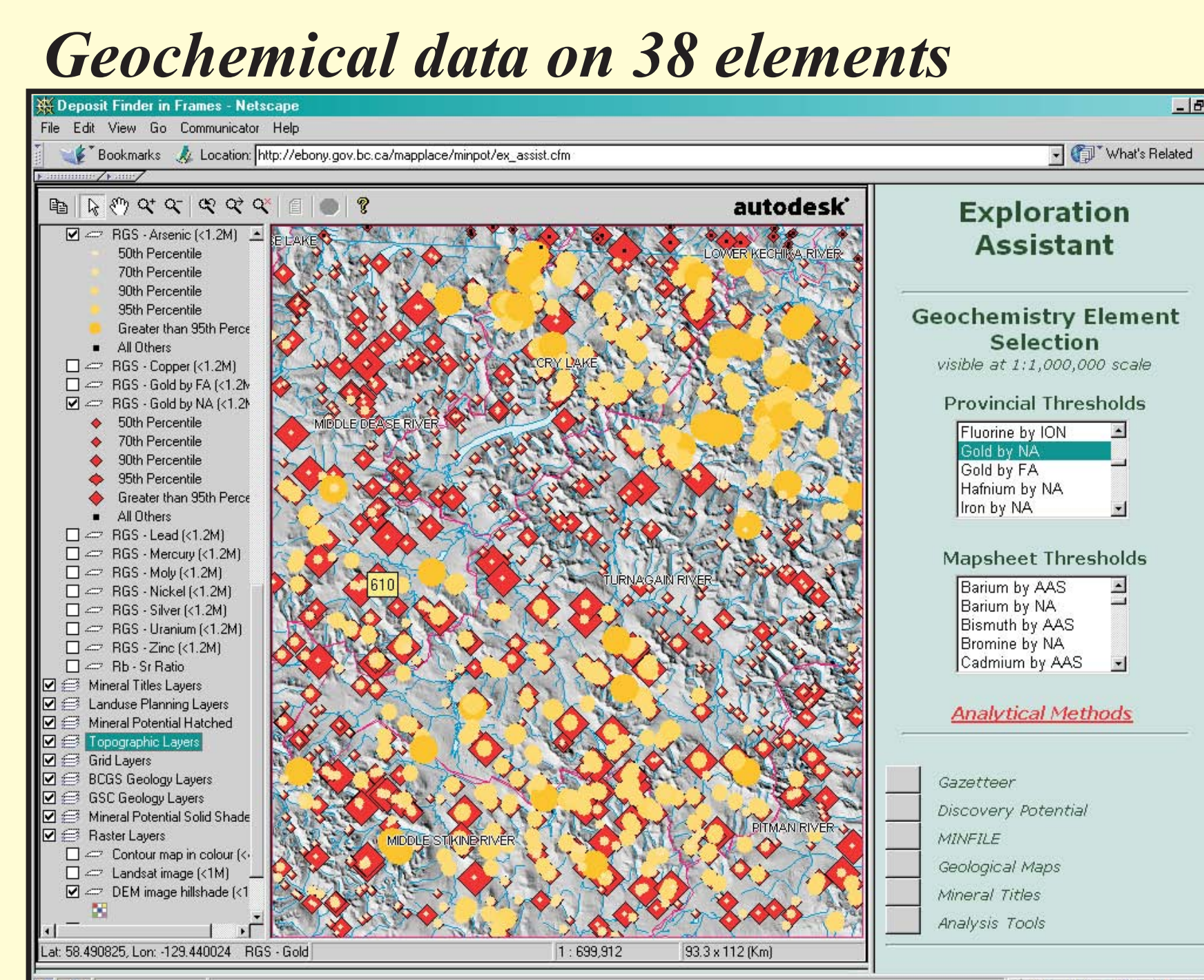
Claims in the Stewart Area; example of the Image Analysis Tools



1:20K TRIM features



Link to ARIS, MINFILE, COALFILE & PDF reports



New Grid Overlay Tool; create customized grids

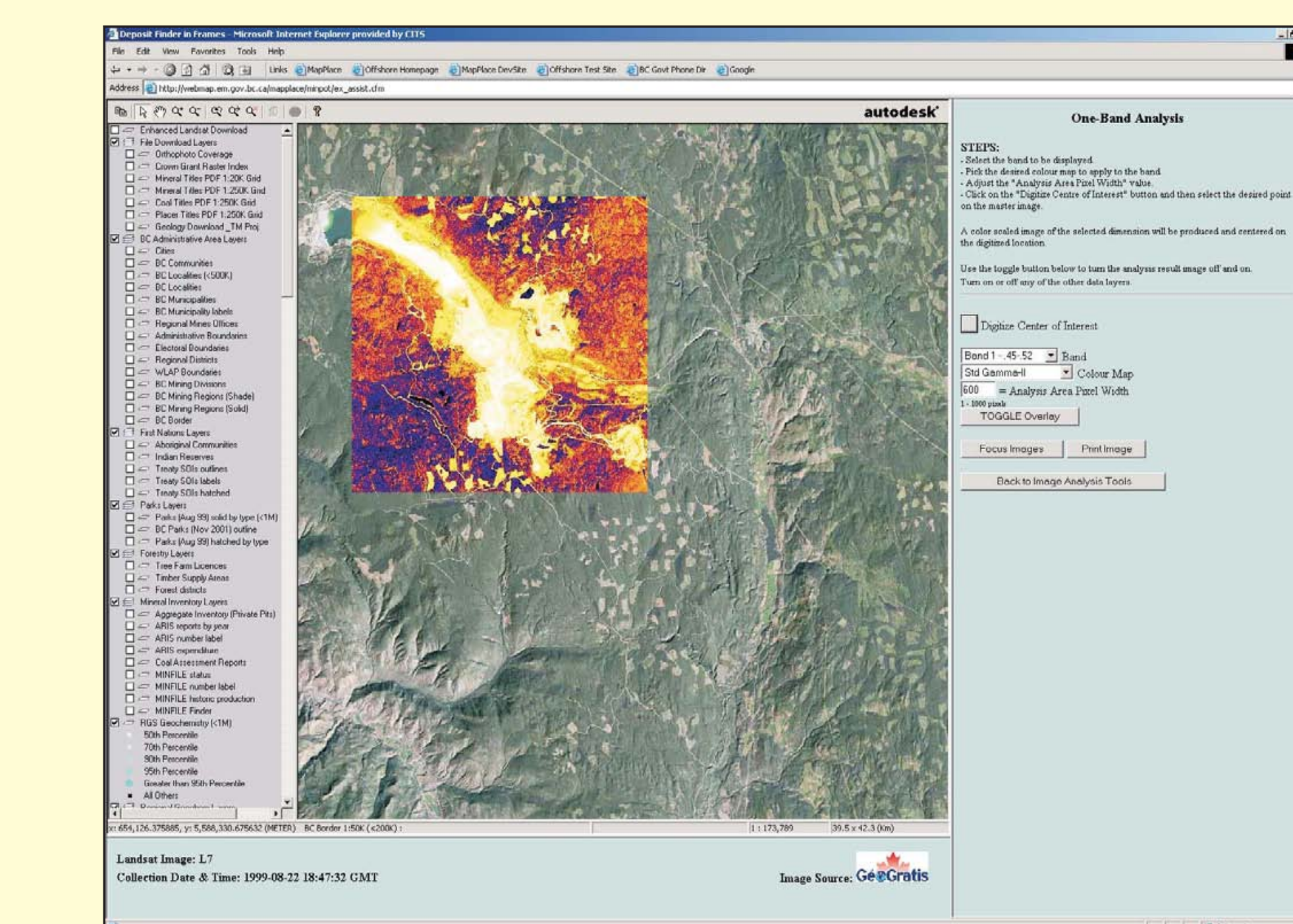
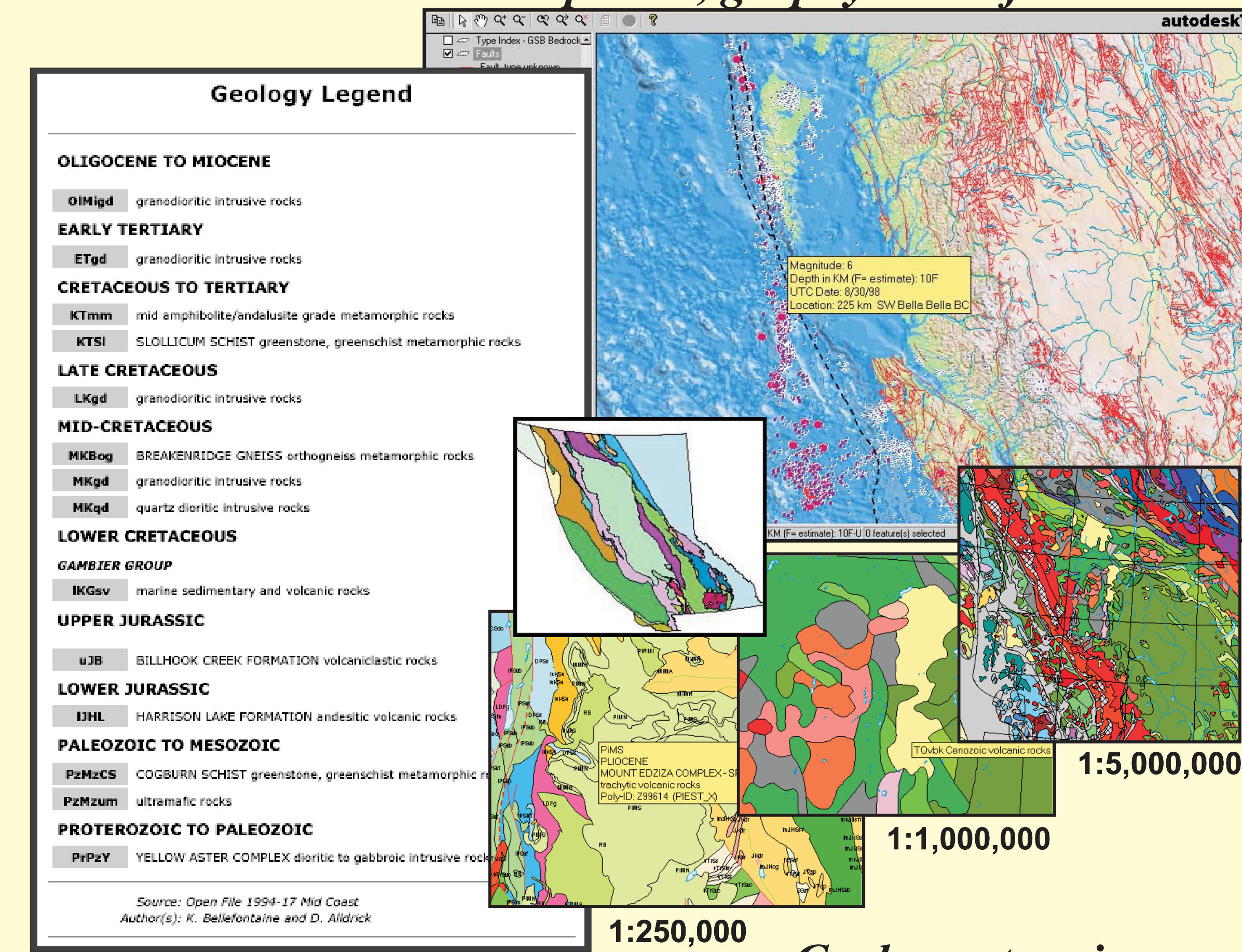


Image Analysis Tools: One-Band Analysis window illustrating all the major user input components. See Geological Fieldwork 2003 (p209-215)

Full user's manual and on-line help available at www.mapplace.ca/

Earthquakes, geophysics & faults



Geology at various scales

Exploration Assistant

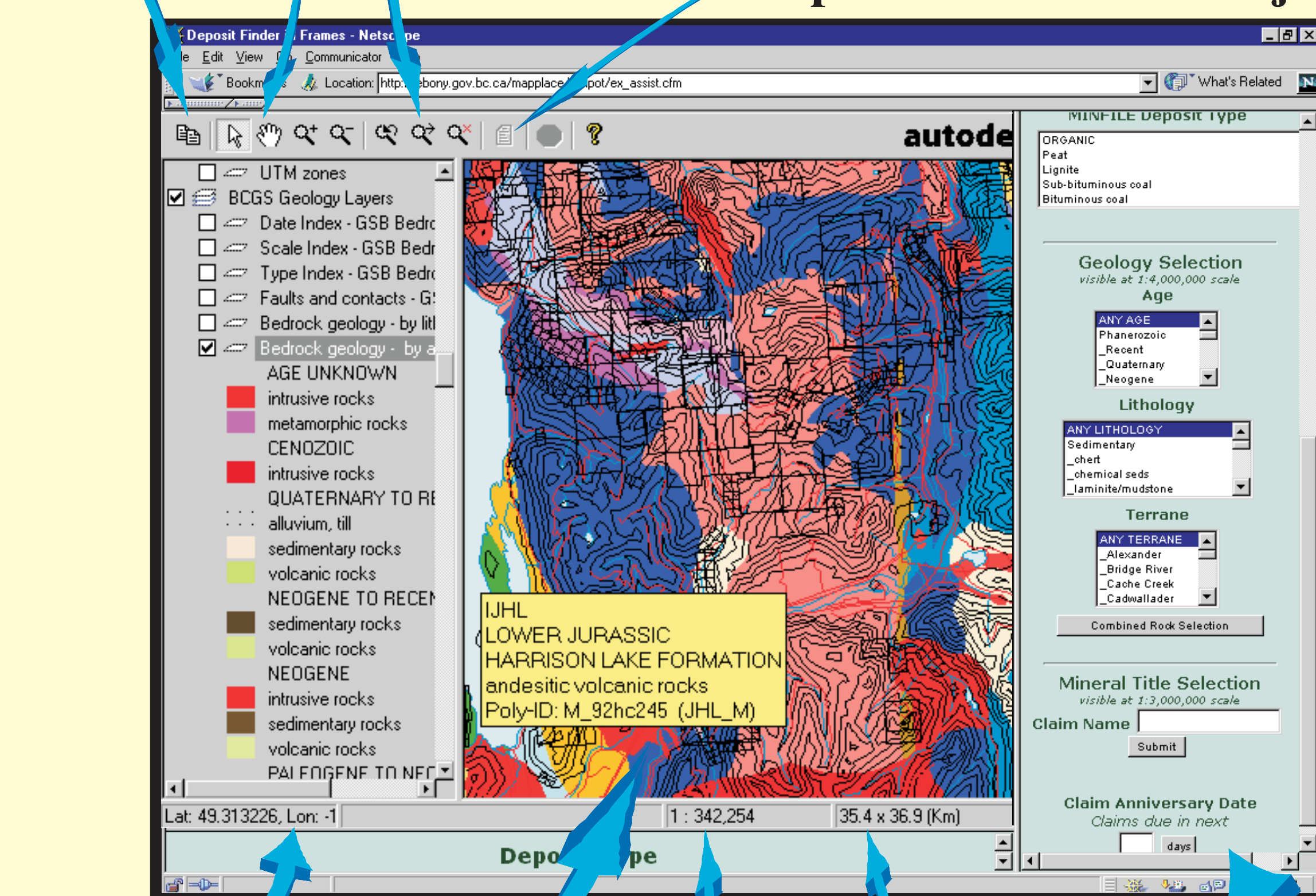
Pop-Up Menu

Accessed with right mouse button

Copy to other Graphic Package

Zoom-to Search Tool

Report on Selected Object



Cursor Position

Fly-out Attributes for Selected Features

Viewing Scale

Size of Map Window

Java Script Frame Provides Search Capabilities

Ask About Our New "Mapper Wrapper" and About Taking the MapPlace into the Field!

FIND detailed information on geology, mineral occurrences, tenure, geochemistry, mineral potential, exploration reports, and many other datasets in a choice of over 20 maps.

DRAW lines, polygons, symbols and text on MapPlace maps.

ANALYZE discovery potential of deposits, geology by age and lithology, structure by enhanced imagery, anniversary dates of claims, and geochemistry by elements with the Exploration Assistant.

CREATE and **PRINT** customized maps using a large assortment of spatial layers.

The options are limitless!

New Interactive Map Features

Image Analysis Toolbox

To select an image click on it with the arrow cursor so it is highlighted

Bring to Top
Original Order
Analyze Image
Clear Selection
Focus Image

Toggle Image Group Layers (on/off)

ASTER LANDSAT AVIRIS

Enhanced Landsat Download

Double click in red image outline

MAPPER TOOL

Layer Control

Active Layer Name: Drill Holes
Layer Priority: 99
(0 - 100)

Add/Change Layer

Add Symbols
Add Lines
Add Polygons
Add Text
Erase Objects
Save Map

Coming Soon

- Geochemistry Symbol Resizing
- Copy Maps with Scale Preservation
- Offline Map Viewing
- Reprojection of Raster Images
- for details see Geological Fieldwork 2003 (p217-218)

Exploration Assistant

Tools

- ☐ Gazetteer
- ☐ Discovery Potential
- ☐ MINFILE
- ☐ Regional Geochemistry
- ☐ Geological Maps
- ☐ Mineral Titles
- ☐ Image Analysis Toolbox **NEW**
- ☐ Grid Overlay **NEW**

Grid Overlay

- Coordinate System
 - Map Coordinate System (MCS?)
 - Latitude and Longitude
- Tick Marks or Lines
 - Lines
 - Tick Marks
- Line Labels
 - On
 - Off
- Label Size [8000 M] Get Default

Colour (1-256)
4 Colours

East-West Lines

Spacing(N): 5 South Line: 48

North-South Lines

Spacing(W): 1 West Line: 126

Get Grid Estimate
Build Grid
Clear Grid

Acknowledgements & Data Sources

- Community Mapping Network
- Department of Fisheries and Oceans
- National Resources Canada
- Ministries of Sustainable Resource Management, Forests, and Water, Land & Air Protection