



British Columbia Geological Survey Mineral Development Office



Ministry of
Energy, Mines and
Low Carbon Innovation

Information Circular 2023-03



Mineral Development Office

The Mineral Development Office (MDO) is the Vancouver base of the British Columbia Geological Survey. It links the more than 1100 global exploration and mining companies headquartered in Vancouver to provincial mineral and coal information.

The MDO distributes British Columbia Geological Survey data and provides technical information and expertise about mineral opportunities to the domestic and international investment community.

The MDO monitors the activities of the exploration and mining sector, informing other government agencies and industry, and produces the annual Provincial Overview of Mining and Exploration volume.

Exploration and mining

Exploration and mining are important to the provincial economy. In 2022, total exploration expenditures are estimated \$740.4 million and the total forecast of mine production is estimated at \$18.2 billion.

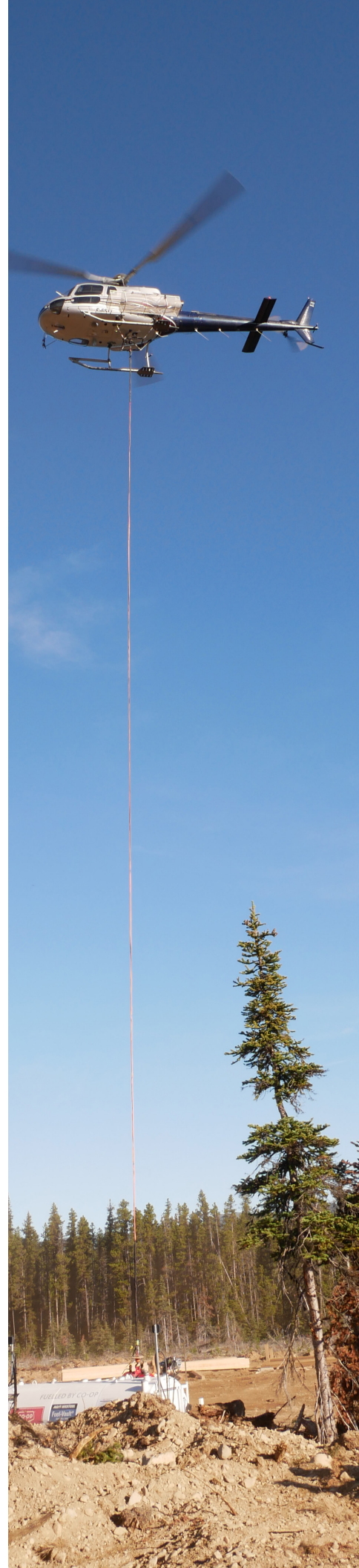
As the steward of mineral and coal resources in the province, the Survey has an important role in stimulating activity, attracting investment, and providing continuous research based on a corporate memory that extends back more than 125 years.

The Survey reduces exploration costs by: providing the geological framework to identify areas with high mineral potential; increasing exploration efficiency by gathering regional information used for property-scale evaluation; and archiving exploration results so that projects can be advanced without duplicating previous work.

Regional Geologists

Based in Smithers, Prince George, Cranbrook, Kamloops, and Vancouver, the Regional Geologists monitor exploration and mining activities in their jurisdictions.

They also provide information on exploration trends, possible investment opportunities, land-use processes, First Nation capacity building, and public outreach, and prepare summaries for the annual Provincial Overview of Exploration and Mining Information Circular.





Contacts

Chief Geologist and Executive Director

Adrian Hickin

250-953-3801; Adrian.Hickin@gov.bc.ca

Director, Cordilleran Geoscience Section

Vacant

250-953-3801; Adrian.Hickin@gov.bc.ca

Director, Resource Information Section

Yao Cui

250-952-0440; Yao.Cui@gov.bc.ca

Director, Mineral Development Office

Gordon Clarke

604-660-2094; Gordon.Clarke@gov.bc.ca

email

Geological.Survey@gov.bc.ca

Mail

British Columbia Geological Survey

PO Box 9333 Stn Prov Gov't

Victoria BC, V8W 9N3

Main Office

6th floor

1810 Blanshard Street

Victoria BC, V8T 4J1

Mineral Development Office

300-865 Hornby Street

Vancouver BC, V6Z 2G3