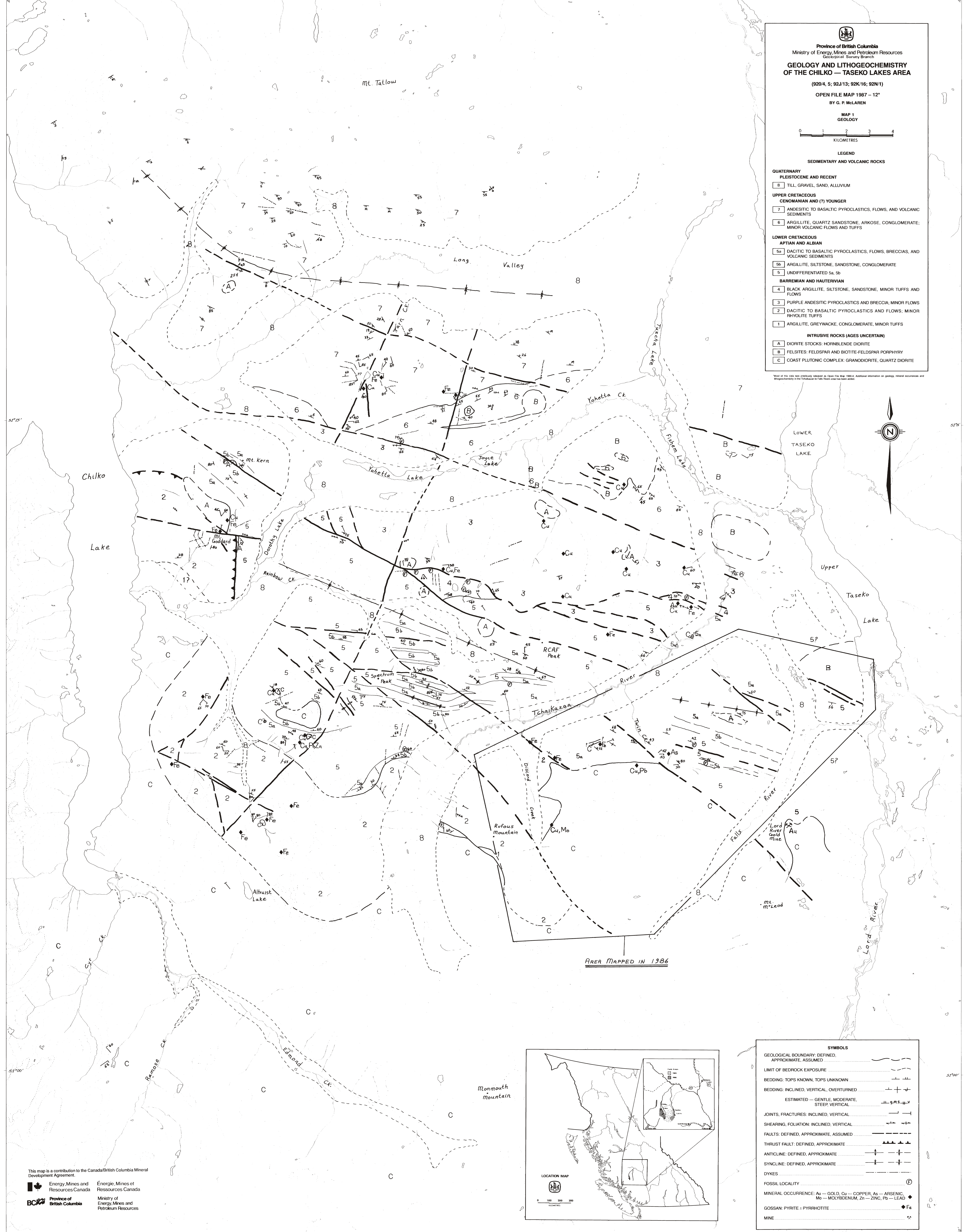
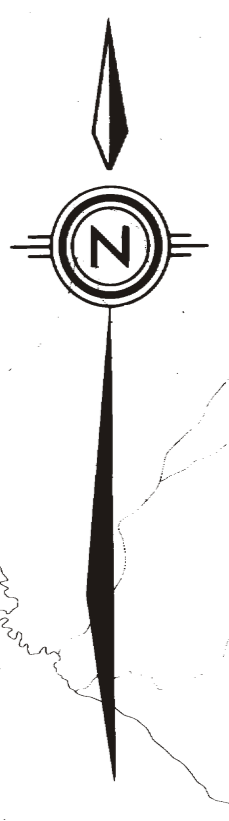
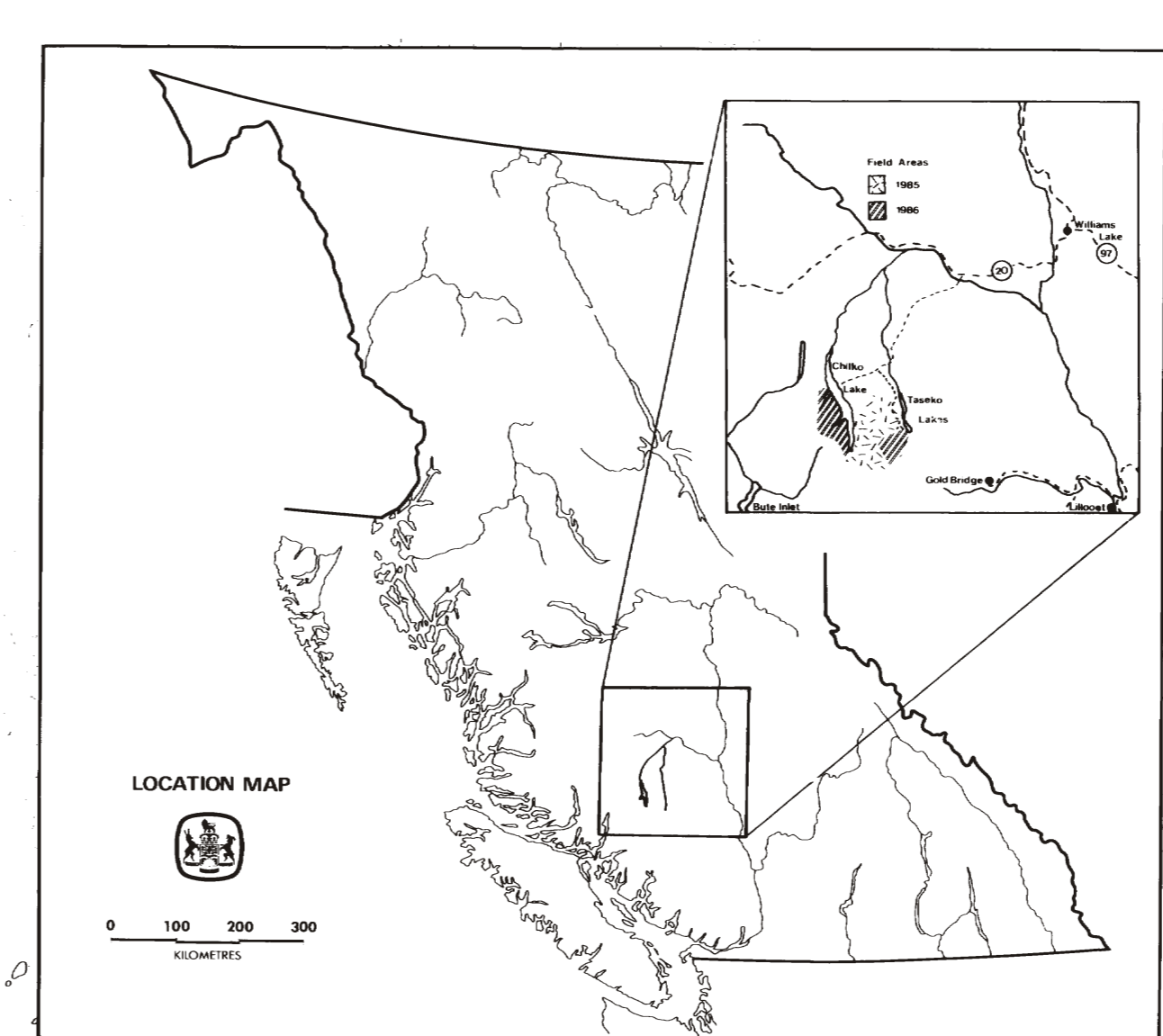


- LEGEND**
- SEDIMENTARY AND VOLCANIC ROCKS**
- QUATERNARY**  
**PLEISTOCENE AND RECENT**  
 8 TILL, GRAVEL, SAND, ALLUVIUM
- UPPER CRETACEOUS**  
**CENOMANIAN AND (?) YOUNGER**  
 7 ANDESITIC TO BASALTIC PYROCLASTICS, FLOWS, AND VOLCANIC SEDIMENTS  
 6 ARGILLITE, QUARTZ SANDSTONE, ARKOSE, CONGLOMERATE; MINOR VOLCANIC FLOWS AND TUFFS
- LOWER CRETACEOUS**  
**APTIAN AND ALBIAN**  
 5a DACITIC TO BASALTIC PYROCLASTICS, FLOWS, BRECCIAS, AND VOLCANIC SEDIMENTS  
 5b ARGILLITE, SILTSTONE, SANDSTONE, CONGLOMERATE  
 5 UNDIFFERENTIATED 5a, 5b
- BARREMIAN AND HAUTERIVIAN**  
 4 BLACK ARGILLITE, SILTSTONE, SANDSTONE, MINOR TUFFS AND FLOWS  
 3 PURPLE ANDESITIC PYROCLASTICS AND BRECCIA; MINOR FLOWS  
 2 DACITIC TO BASALTIC PYROCLASTICS AND FLOWS; MINOR RHYOLITE TUFFS  
 1 ARGILLITE, GREYWACKE, CONGLOMERATE, MINOR TUFFS
- INTRUSIVE ROCKS (AGES UNCERTAIN)**  
 A DIORITE STOCKS; HORNBLENDE DIORITE  
 B FELSITES; FELDSPAR AND BIOTITE-FELDSPAR PORPHYRY  
 C COAST PLUTONIC COMPLEX; GRANODIORITE, QUARTZ DIORITE

Note: All data were originally released as Open File Map 1984-4. Additional information on geology, mineral occurrence and lithogeochemistry on the Taseko to Fish Lake River area has been added.




AREA MAPPED IN 1986

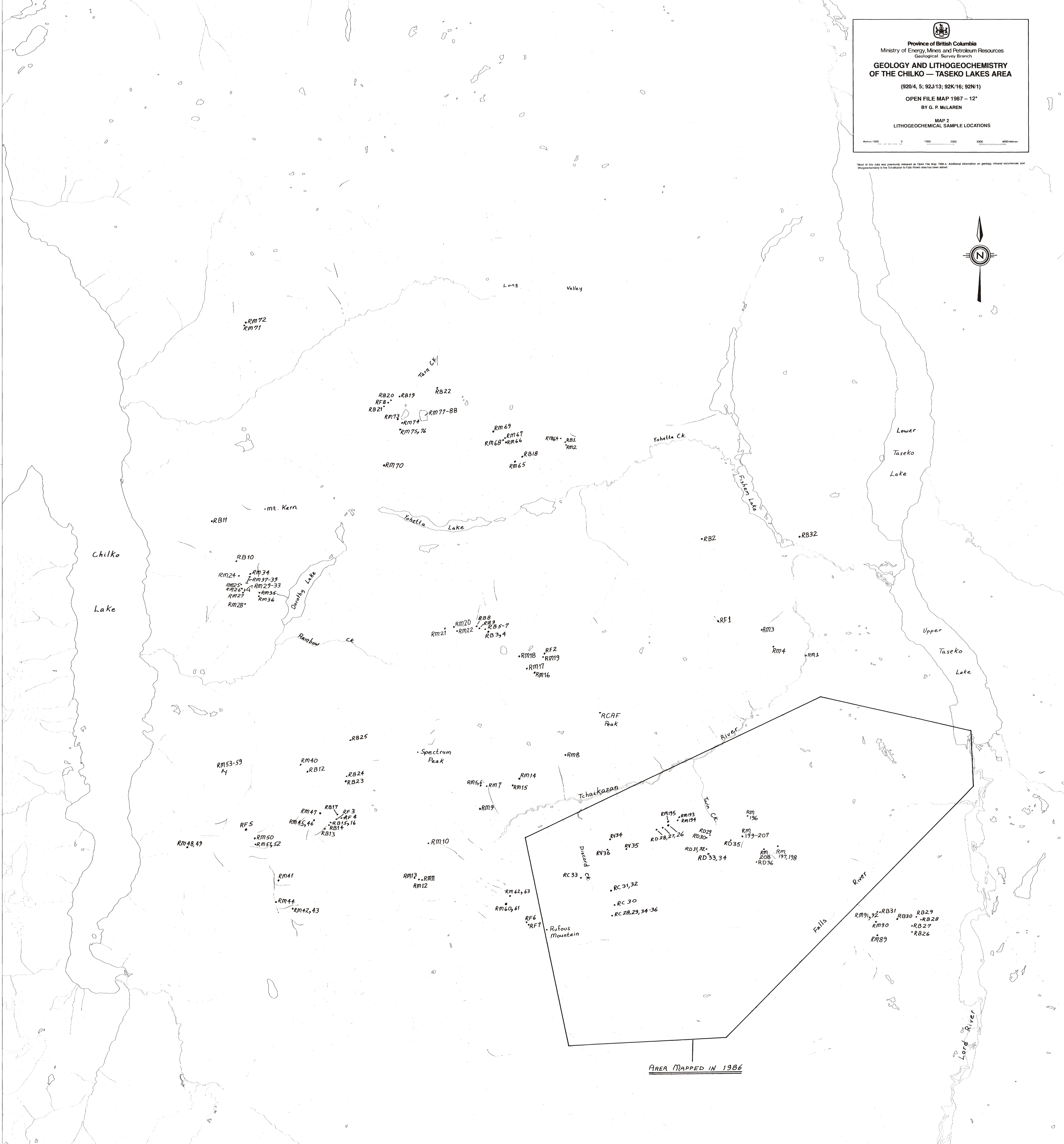


- SYMBOLS**
- GEOLOGICAL BOUNDARY: DEFINED, APPROXIMATE, ASSUMED
- LIMIT OF BEDROCK EXPOSURE
- BEDDING: TOPS KNOWN, TOPS UNKNOWN
- BEDDING: INCLINED, VERTICAL, OVERTURNED
- ESTIMATED — GENTLE, MODERATE, STEEP, VERTICAL
- JOINTS, FRACTURES: INCLINED, VERTICAL
- SHEARING, FOLIATION: INCLINED, VERTICAL
- FAULTS: DEFINED, APPROXIMATE, ASSUMED
- THRUST FAULT: DEFINED, APPROXIMATE
- ANTICLINE: DEFINED, APPROXIMATE
- SYNCLINE: DEFINED, APPROXIMATE
- DYKES
- FOSSIL LOCALITY
- MINERAL OCCURRENCE: Au — GOLD, Cu — COPPER, As — ARSENIC, Mo — MOLYBDENUM, Zn — ZINC, Pb — LEAD, Fe
- GOSSAN: PYRITE — PYRRHOTITE
- MINE



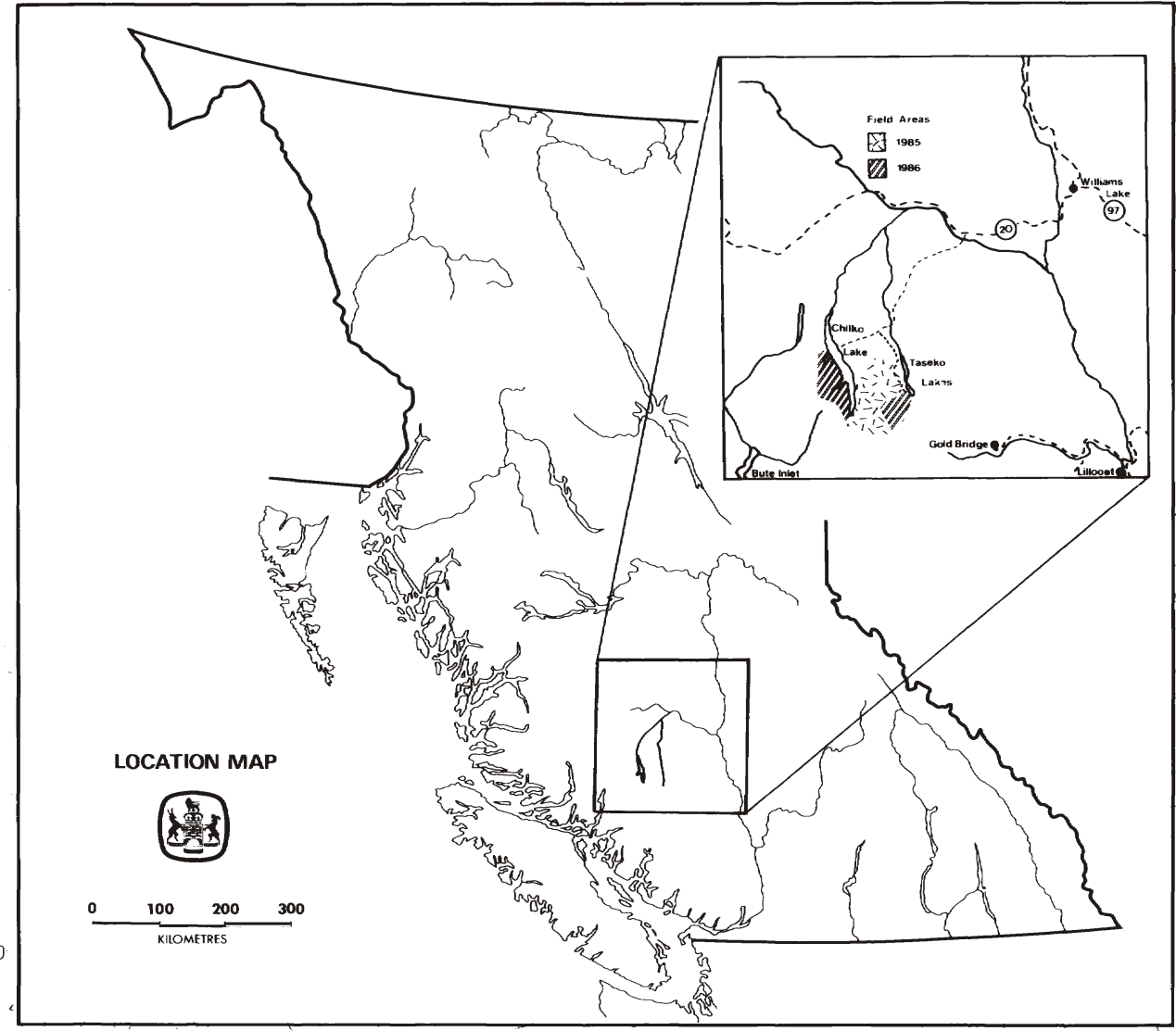
  
 Province of British Columbia  
 Ministry of Energy, Mines and Petroleum Resources  
 Geological Survey Branch  
**GEOLOGY AND LITHOGEOCHEMISTRY  
 OF THE CHILKO — TASEKO LAKES AREA**  
 (920/4, 5; 92J/13; 92K/16; 92N/1)  
 OPEN FILE MAP 1987 — 12\*  
 BY G. P. McLAREN  
 MAP 2  
 LITHOGEOCHEMICAL SAMPLE LOCATIONS  
Scale: 1:100,000

\*Most of the data was previously released as Open File Map 1986-4. Additional information on geology, mineral occurrences and lithogeochemistry in the Tachakazan to Falls River area has been added.

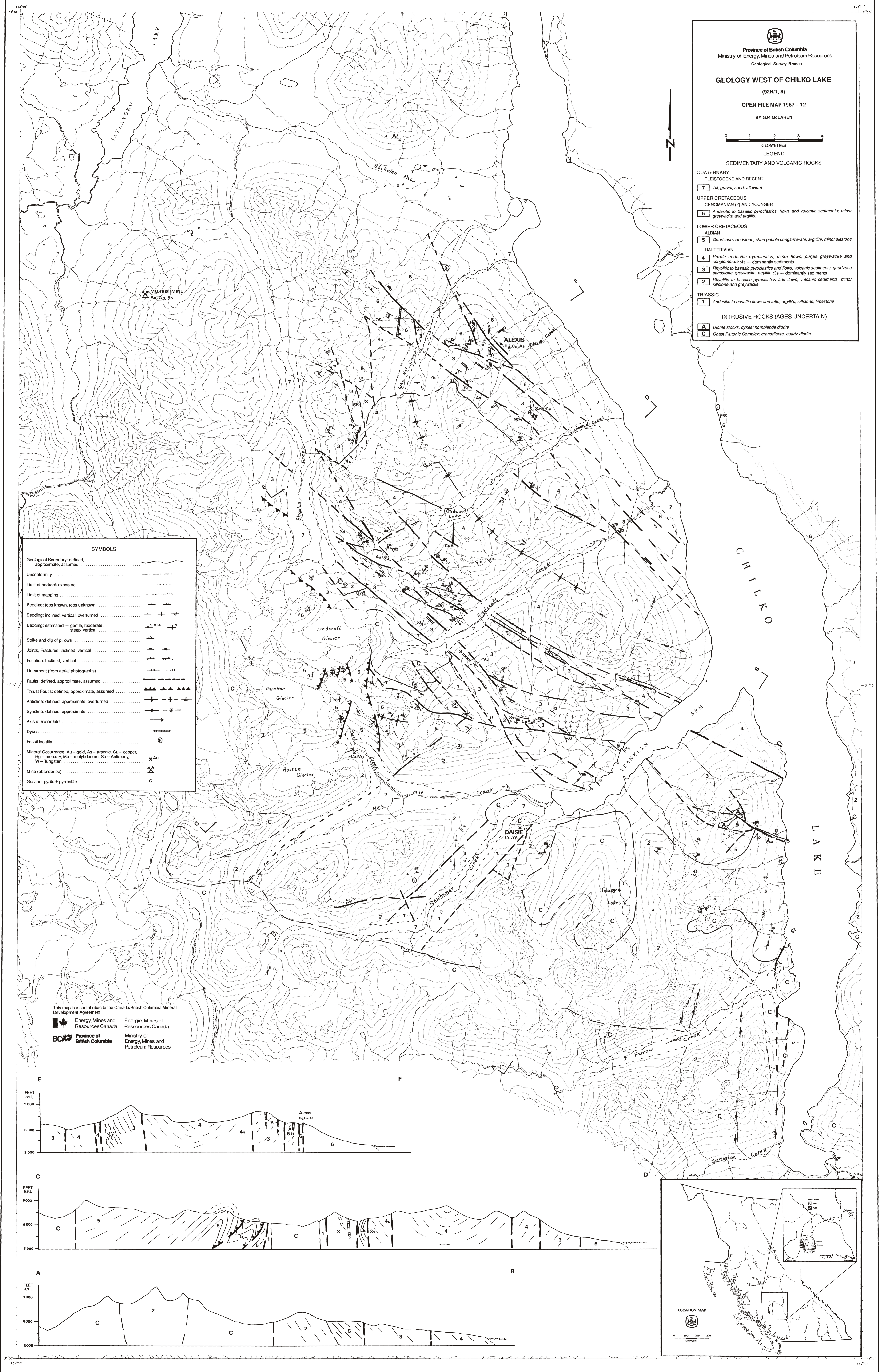


**AREA MAPPED IN 1986**

This map is a contribution to the Canada/British Columbia Mineral Development Agreement.  
 Energy, Mines and Resources Canada  
 Province of British Columbia  
 Ministry of Energy, Mines and Petroleum Resources







Province of British Columbia  
 Ministry of Energy, Mines and Petroleum Resources  
 Geological Survey Branch

**GEOLOGY WEST OF CHILKO LAKE**  
 (92N/1, 8)

OPEN FILE MAP 1987 - 12  
 BY G.P. McLAREN



- SEDIMENTARY AND VOLCANIC ROCKS
- QUATERNARY  
 PLEISTOCENE AND RECENT  
 7 Till, gravel, sand, alluvium
- UPPER CRETACEOUS  
 CENOMANIAN (?) AND YOUNGER  
 6 Andesitic to basaltic pyroclastics, flows and volcanic sediments; minor greywacke and argillite
- LOWER CRETACEOUS  
 ALBIAN  
 5 Quartzose sandstone, chert pebble conglomerate, argillite, minor siltstone
- HAUTERIVIAN  
 4 Purple andesitic pyroclastics, minor flows, purple greywacke and conglomerate -As - dominantly sediments  
 3 Rhyolitic to basaltic pyroclastics and flows, volcanic sediments, quartzose sandstone, greywacke, argillite -Sb - dominantly sediments  
 2 Rhyolitic to basaltic pyroclastics and flows, volcanic sediments, minor siltstone and greywacke
- TRIASSIC  
 1 Andesitic to basaltic flows and tuffs, argillite, siltstone, limestone
- INTRUSIVE ROCKS (AGES UNCERTAIN)  
 A Diorite stocks, dykes; hornblende diorite  
 C Coast Plutonic Complex: granodiorite, quartz diorite

**SYMBOLS**

- Geological Boundary: defined, approximate, assumed
- Unconformity
- Limit of bedrock exposure
- Limit of mapping
- Bedding: tops known, tops unknown
- Bedding: inclined, vertical, overturned
- Bedding: estimated - gentle, moderate, steep, vertical
- Strike and dip of pillows
- Joints, Fractures: inclined, vertical
- Foliation: Inclined, vertical
- Lineament (from aerial photographs)
- Faults: defined, approximate, assumed
- Thrust Faults: defined, approximate, assumed
- Anticline: defined, approximate, overturned
- Syncline: defined, approximate
- Axis of minor fold
- Dykes
- Fossil locality
- Mineral Occurrences: Au - gold, As - arsenic, Cu - copper, Hg - mercury, Mo - molybdenum, Sb - Antimony, W - Tungsten
- Mine (abandoned)
- Gossan: pyrite ± pyrrhotite

This map is a contribution to the Canada/British Columbia Mineral Development Agreement.

Energy, Mines and Resources Canada / Énergie, Mines et Ressources Canada

Province of British Columbia / Ministry of Energy, Mines and Petroleum Resources

