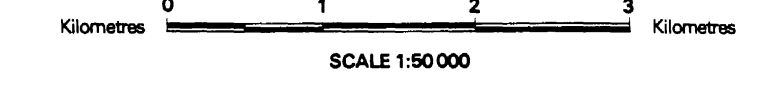


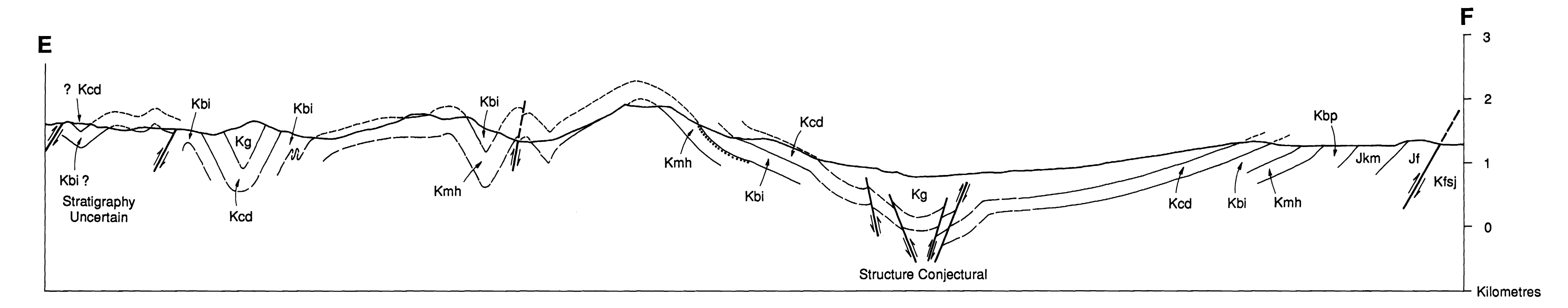
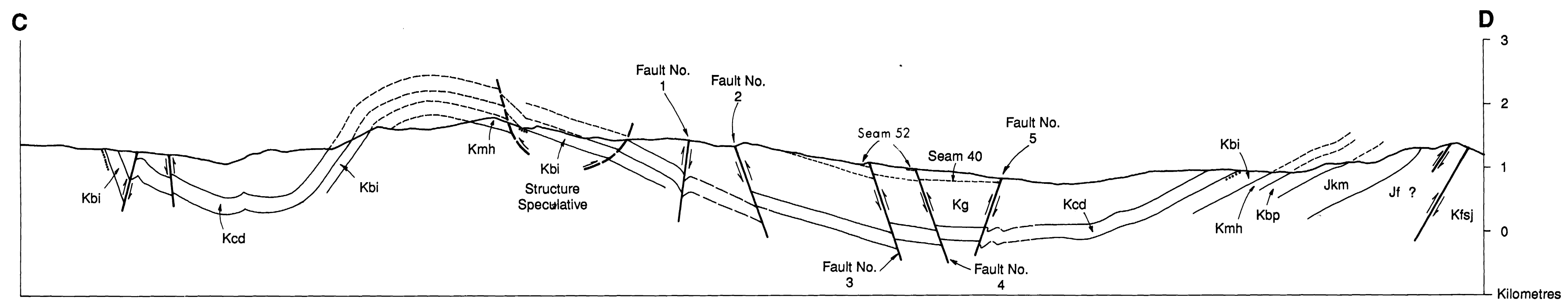
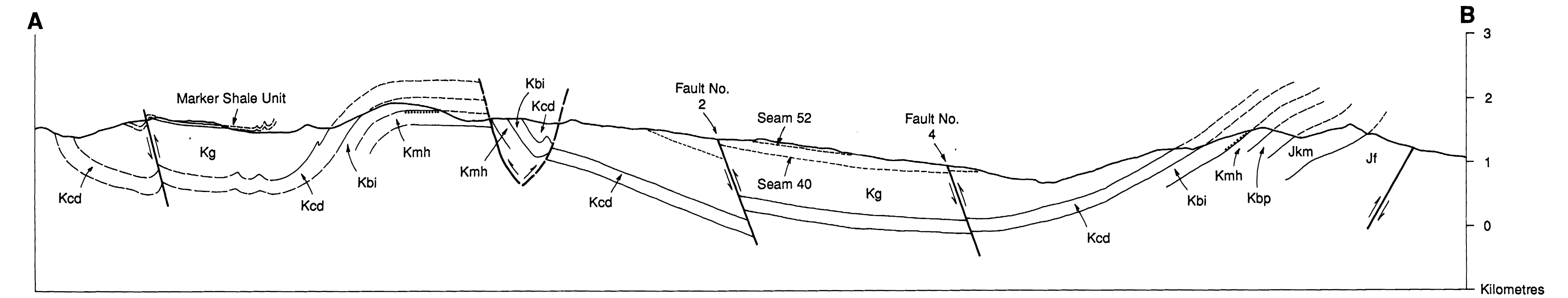


Province of British Columbia
 Ministry of Energy, Mines and Petroleum Resources
 GEOLOGICAL SURVEY BRANCH
 OPEN FILE 1987-21
GEOLOGY OF THE CARBON CREEK AREA
 GEOLOGY BY ANDREW LEGUN
 N.T.S. 930/15



- Sugary quartz arenite beds _____
- Geologic boundary (defined, approximate, assumed) _____
- Bedding attitude (horizontal, inclined, overturned) _____
- Thrust fault - teeth in direction of dip on upthrust side (defined, approximate) _____
- Fault _____
- Syncline (defined, approximate) _____
- Anticline (defined, approximate) _____
- Syncline or anticline (arrow indicates plunge) _____
- Monocline or kink fold (north limb relatively flat) _____
- Anticline and syncline (overturned) _____
- Diamond drill hole _____
- Mine site _____
- Coal exposure(s) (thickness in metres) _____
- Gas well site _____
- Direction of glacial striae _____

LOWER CRETACEOUS	FORT ST. JOHN GROUP	UPPER FORT ST. JOHN GROUP MOOSEBAR FM.	Kmb	Ktsj
	BULLHEAD GROUP	GETHING FM. CADOMIN FM.	Kg Kcd	
JURASSIC	MINNIES GROUP	BICKFORD FM. MONACH FM. BEATTIE PEAKS FM. MONTEITH FM.	Kbi Kmh Kbp Jkm	Jf
		FERNIE FM.	Jf	
			T	
TRIASSIC				T



THIS PROJECT IS A CONTRIBUTION TO THE CANADA/BRITISH COLUMBIA
 MINERAL DEVELOPMENT AGREEMENT, 1985-1990



Province of British Columbia
 Ministry of Energy, Mines and Petroleum Resources



Energy, Mines and Resources Canada
 Énergie, Mines et Ressources Canada