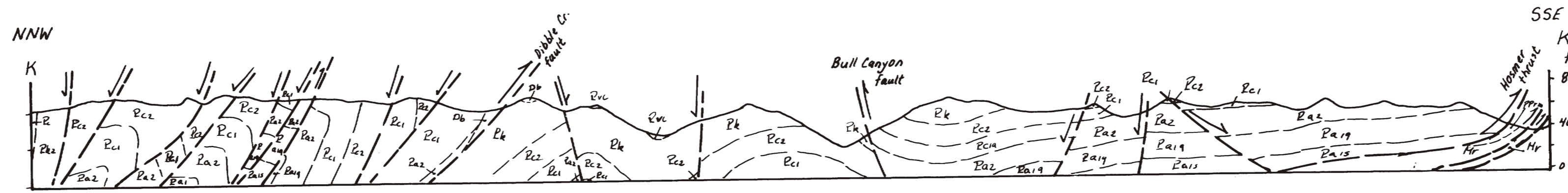


MINERAL OCCURRENCES

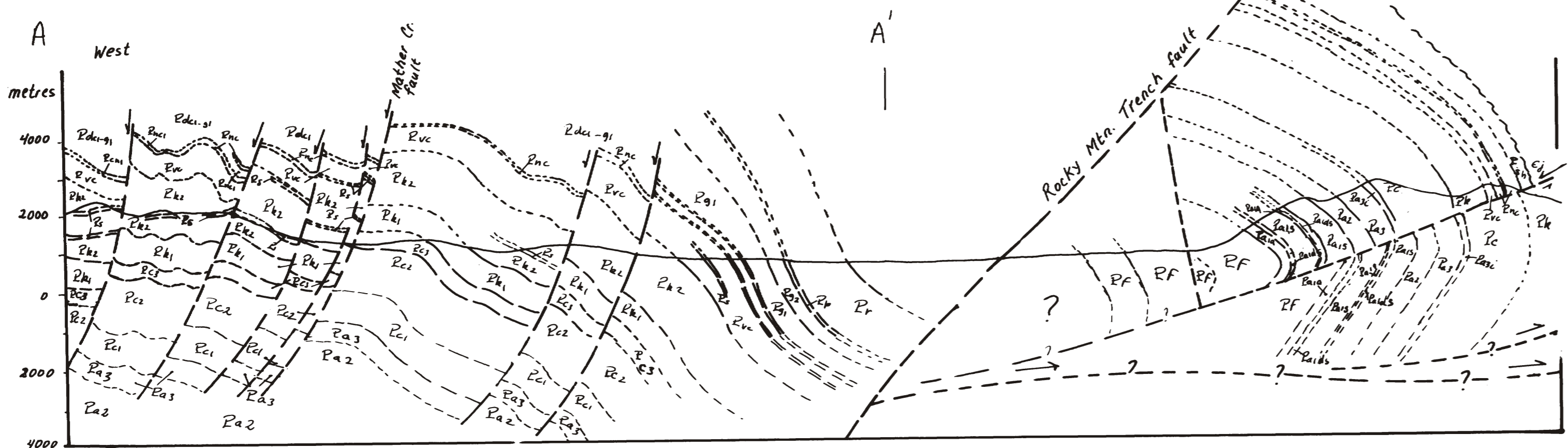
MAP NO.	MINFILE NO	NAME	COMMODITIES
1	G/NW-065	Brenda	Cu, Au, Ag, Ba
2	G/NW-052	BBX	Ba
3	G/NW-076	War Eagle	Co, Ni, Cu
4	G/NW-064	Federal	Cu
5	G/NW-058	Pre	Pb, Zn, Cu
6	G/NW-061	Lazy 32	Cu
7	G/NW-059	Lazy 19	Cu
8	G/NW-035	Golden Fleece	Cu, Au, Ag, Pb
9	G/NW-045	Emily-Tiger	Cu, Au, Ag, Pb
10	G/NW-046	Wanda B	Cu
11	G/NW-049	April	Cu
12	G/NW-050	Hot 1	Cu
13	G/NW-008	Estella	Ag, Pb, Zn
14	G/NW-016	Kootenay	Cu, Pb, Ag
15	G/NW-017	Try Again	Cu, W
16	G/NW-009	Kootenay King	Ag, Pb, Zn
17	G/NW-062	Cher	Cu
18	G/NW-074	Olivia	Cu
19	G/NW-060	Cedar	W, Cu, Ag, Mo
20	G/NW-057	Jolly-Molly	Pb, Zn, Cu, W
21	G/NW-018	Coronado	Cu, Ag
22	G/NW-053	Fort Steele	magnesite
23	G/NW-047	Wallinger	magnesite
24	G/NW-020	Lily May	Au, Ag, Pb, Zn
25	G/NW-019	Dardenelle	Pb, Au, Ag, Zn, Cu
26	G/NW-011	Lily May Ext	Pb, Cu
27	G/NW-021	St. Tresa	Pb, Ag
28	G/NW-029	Expander	placer Au
29	G/NW-001	Magnet	Pb, Zn, Ag
30	G/NW-024	Dougherty	Au
31	G/NW-039	Ft. Steele	clay
32	G/NW-036	Boulder Creek	magnesite
33	G/NW-022	Midas	Au, Ag, Pb, Cu
34	G/NW-023	Fisher	Au, Ag, Pb, Cu
35	G/NW-007	Maus Creek	placer Au
36	G/NW-025	Eagle Plume	Cu, Ag, Au
37	G/NW-026	Eagle's Nest	Cu
38	G/NW-032	Eagle Too	Cu, Au
39	G/NW-051	Box	Pb, Cu
40	G/NW-004	Victor	Pb, Zn, Ag, Au
41	G/NW-003	Dibble	Cu, Ag, Au
42	F/NE-116	Stemwinder	Ag, Pb, Zn
43	F/NE-053	North Star	Pb, Zn, Ag
44	F/NE-101	Polaris	Cu
45	F/NE-161	Mattews Creek	graphite
46	G/NW-042	Omineca	Cu
47	G/NW-063	Black Bear	Pb, Zn
48	G/NW-075	Kim 53	Cu, Pb, Zn
49	G/NW-043	Black Hills	Cu, Pb
50	G/NW-041	Blue Dragon	Cu
51	G/NW-040	Sylvia	Cu, Pb, Zn
52	G/NW-070	Rigel	Pb, Zn
53	F/NE-101	Polaris	Cu
54	F/NE-054	Polaris (Contoir, Fors)	Pb, Zn
55	G/NW-005	Marysville	magnesite
56	F/NE-056	Anderson (Golden Egg)	Au, Ag, Pb
57	F/NE-154	Janet (Perry Creek)	Au
58	F/NE-057	Birdie L.	Pb, Ag
59	F/NE-117	Perry Creek	placer Au
60	G/NW-067	Perry	placer Au
61	F/NE-058	Rome, Valley (AC)	Au, Pb
62	F/NE-059	Running Wolf	Au
63	G/SW-003	Bert	silica
64	G/SW-004	B & V	Pb, Zn, Ag
65	G/SW-001	Nord	Ag, Pb, Zn, Cu, Au
66	G/SW-049	Vine 55	Pb, Zn, Ag
67	G/SW-002	Jim 16	Pb
68	G/SW-007	Jim 6	Pb
69	G/SW-006	Jim 4	Pb
70	G/SW-037	Payroll	Au, Ag, Cu, Pb
71	G/SW-039	Moyie River	Au
72	F/SE-029	Prospector's Dream	Au
73	G/SW-008	Lumberton	Fe, Ag, Pb, Zn
74	G/SW-051	Vine 17	Pb, Zn
75	G/SW-057	Ranch	Pb, Zn
76	G/SW-050	Vine 1	Pb, Zn, Ag, Cu, Au
77	G/SW-035	Helg	Pb, Zn, Ag
78	G/SW-038	Pee Pee	Pb
79	G/SW-042	Pee Pee 50	Pb
80	G/SW-043	Pee Pee 55	Pb, Zn, Ag
81	F/SE-064	Royal Crown	Pb, Cu, Ag
82	G/SW-027	Guindon	Ag, Pb, Zn
83	G/SW-023	Aurora	Pb, Zn, Ag
84	G/SW-025	St. Eugene Mine	Ag, Pb, Zn, Au
85	G/SW-030	Society Girl	Pb, Ag, Zn
86	G/SW-058	Silver Pipe	Pb, Ag, Cu
87	G/SW-021	Midway	Au, Pb, Zn, Sn, Cu
88	G/NW-012	Park	Pb, Ag
89	G/NW-033	King	Cu
90	G/NW-056	Eager Station	clay
91	G/NW-027	Copper Belt	Cu, Ag, Au
92	G/NW-037	Cranbrook	clay
93	G/SW-045	Sunrise	gypsum
94	G/SW-044	Mayook Quarry	gypsum
95	G/SW-032	Bull River	dolomite, limestone
96	G/SW-031	Bull River	gypsum
97	G/SW-036	Wardner	limestone, dolomite
98	G/SW-009	Chipka Creek	gypsum
99	G/SW-034	Frankie	Hg
100	G/NW-002	Bull River	Cu, Ag, Au
101	G/NW-006	Copper King	Cu, Ag, Au, Pb
102	G/NW-015	Yankee Girl	Cu, Ag, Au
103	G/NW-028	Cuckoo	Pb, Cu, Ag
104	G/NW-072	Trilby	Pb, Zn, Ag, Au
105	G/NW-044	Bull River	Fe
106	G/SW-056	Viking	Cu, Pb, Ag
107	G/SW-040	Great Western	Cu, Ag, Pb, Zn, Au
108	G/SW-054	Cedar	Pb, Ag
109	G/SW-046	Pit	Cu
110	G/SW-052	Ross 1	Cu, Zn
111	G/SW-026	Sand Creek	Fe
112	G/NW-034	Island Lake One	phosphate
113	G/NW-031	Island Lake Two	phosphate
114	G/NW-048	Fernie	clay
115	G/NW-055	Mutz Creek	phosphate
116	G/NW-066	Fernie	coal
117	G/SW-059	Lizard	phosphate
118	G/SW-053	Ross 2	Pb
119	G/SW-055	OK	Pb, Ag
120	G/SW-016	Blue Grouse	Cu
121	G/SW-015	Empire	Cu, Pb, Ag, Au, Sb
122	G/SW-018	Burt	Zn, Pb, Ag, Cu
123	G/SW-047	Mountain	Cu, Pb, Ag
124	G/SW-017	Peacock Copper	Cu
125	G/SW-014	Jessie	Pb, Cu
126	G/SW-048	Don	Cu
127	G/SW-013	Burton	Cu, Ag, Au
128	G/SW-005	Elko	clay
129	G/SW-028	Silver King	Cu
130	G/SW-010	Ramshorn	Cu
131	G/SW-029	Leah	Ag, Pb
132	G/SW-011	Jennie	Cu, Fe
133	G/SW-012	Sweet May	Cu, Fe
134	G/SW-020	Green	Cu, Zn, barite
135	G/SW-019	Wilda	Cu, Zn
136	F/NE-123	Hotspring 1	hotspring
137	F/NE-055	Rice (Lone Eagle; Qtz Mtn.)	Au, Ag, silica
138	F/NE-052	Sullivan	Pb, Zn, Ag
139	F/NE-135	Dean	Pb, Zn, Ag
140	G/NW-013	Luke	Cu
141	G/NW-014	Grey Copper	Cu, Au, Ag
142	G/NW-073	BC	Pb, Zn, Cu
143	G/NW-015	Yankee Girl	Cu, Au, Ag, Pb, Zn

OPEN FILE MAP NO. 1988-14
 GEOLOGY OF THE FERNIE W $\frac{1}{2}$ MAP SHEET
 (AND PART OF NELSON E $\frac{1}{2}$)
 (NTS 82G/W $\frac{1}{2}$ AND 82F/E $\frac{1}{2}$)

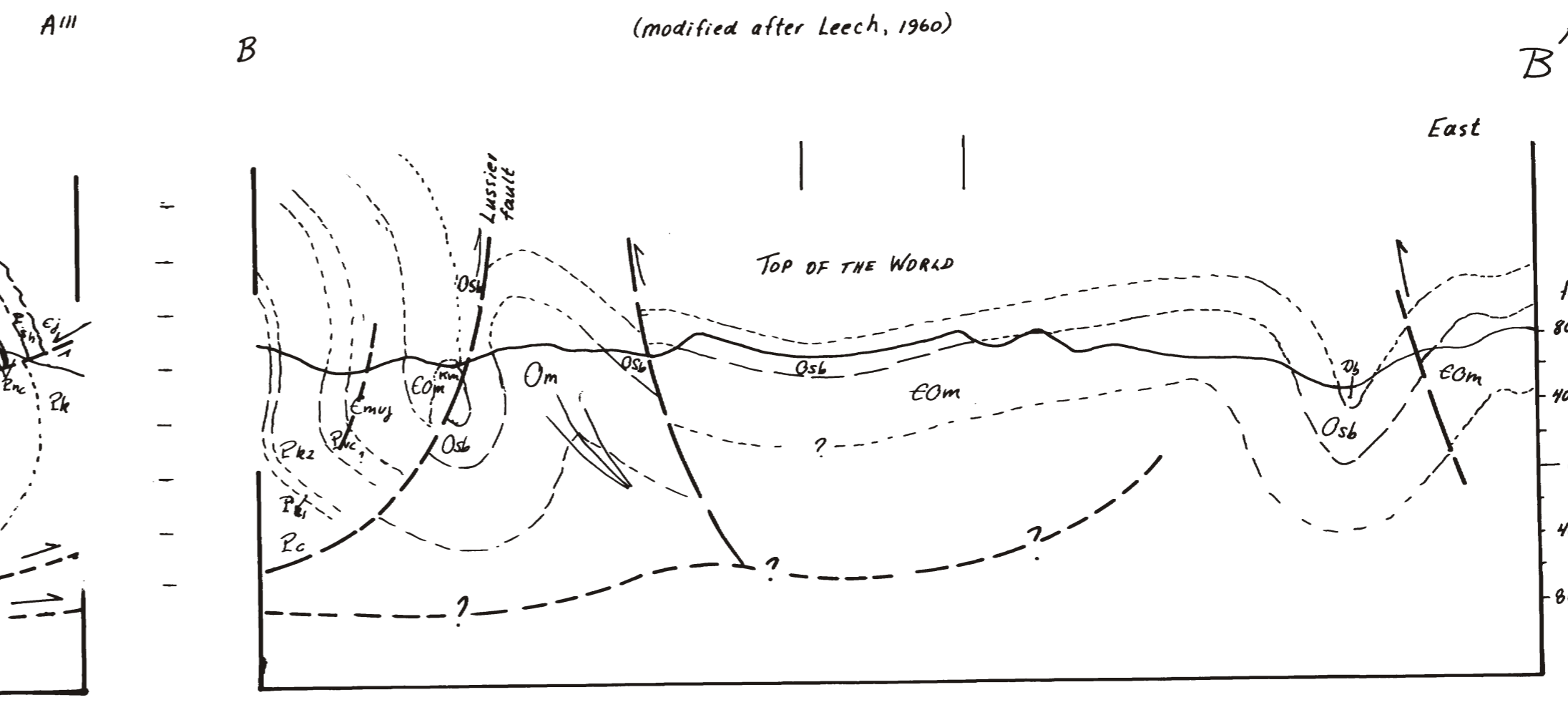
LONGITUDINAL SECTION - Mt. FISHER SAND CREEK AREA
(after McMechan, 1981)



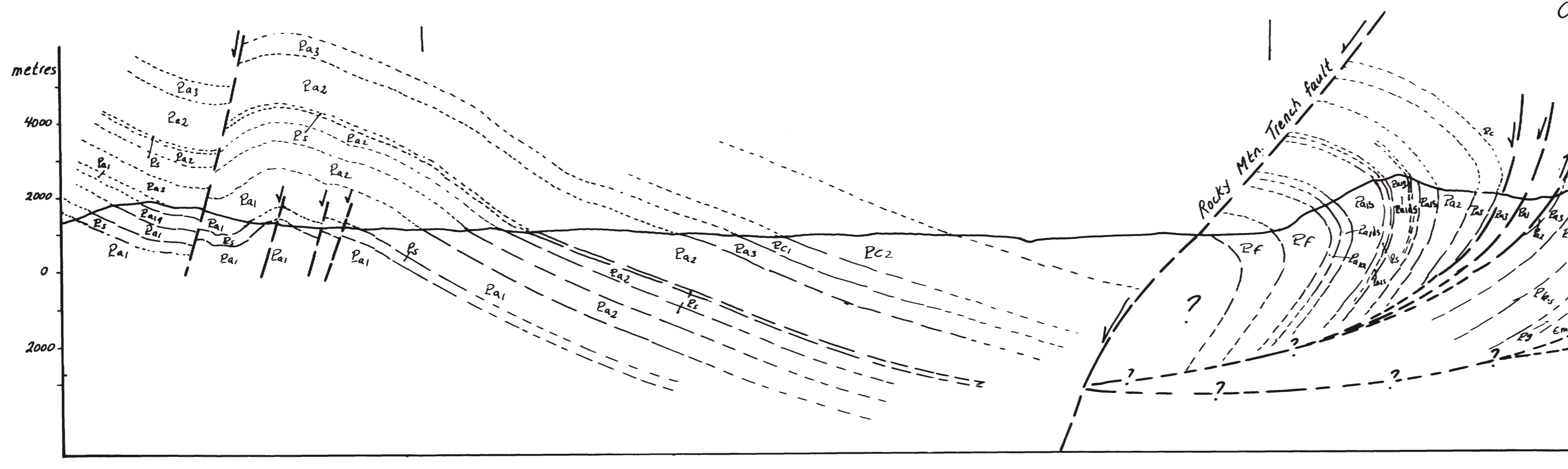
PURCELL MOUNTAINS - SKOOKUMCHUCK AREA
(after Carter & Höy, 1984)



ESTELLA-KOOTENAY KING AREA
(modified after Höy, 1984)



KIMBERLEY AREA
(after Höy, 1984)



ESTELLA-KOOTENAY KING AREA
(modified after Höy, 1984)

