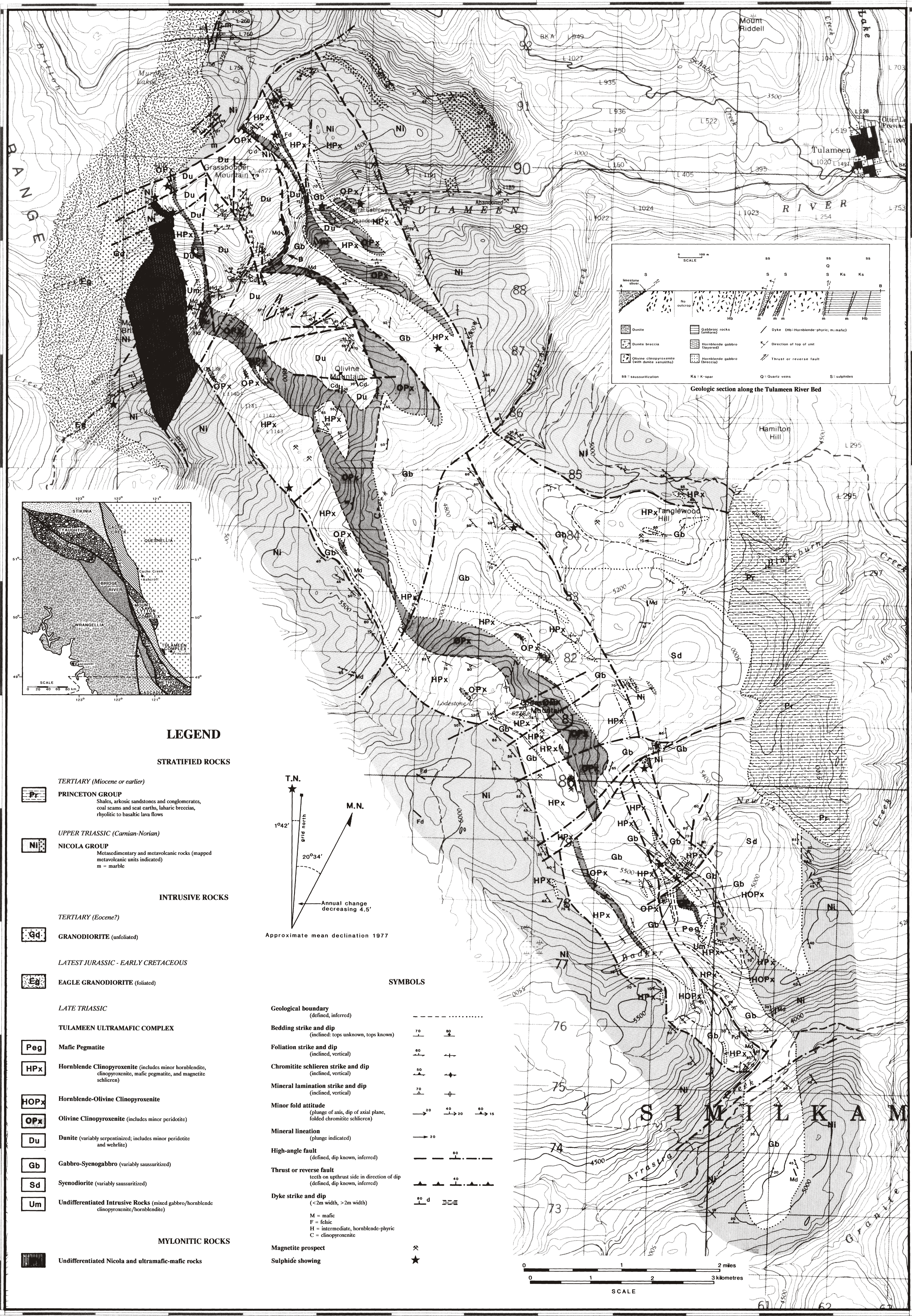


120°55'

120°50'

120°45'

49°30'



THIS PROJECT IS A CONTRIBUTION TO THE CANADA/BRITISH COLUMBIA
MINERAL DEVELOPMENT AGREEMENT, 1985-1990

OPEN FILE 1988-25

GEOLOGY OF THE TULAMEEN ULTRAMAFIC COMPLEX

NTS 92H/7 AND 92H/10
Geology by G. T. Nixon 1987 as modified from D. C. Findlay 1963

Findlay, D. C., 1963. Petrology of the Tulameen Ultramafic Complex, Yale District, British Columbia. Unpublished Ph.D. Thesis, Queen's University, Kingston, Ontario, 415 p.

Compilation by G. T. Nixon
Drafted by L. Spellacy

120°55'

120°50'

120°45'

49°30'

49°25'