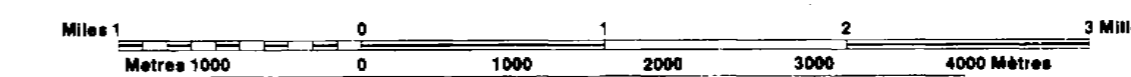


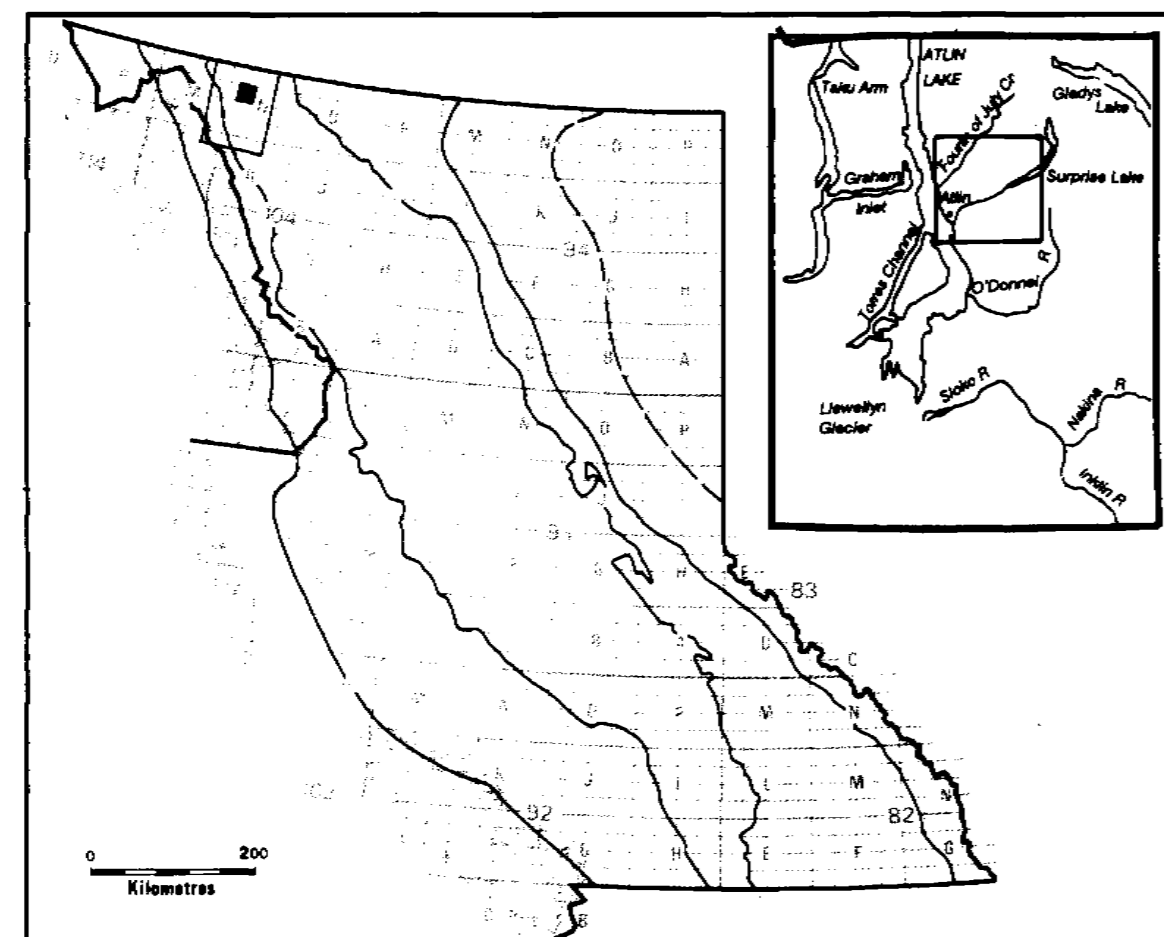
GEOLOGY OF THE ATLIN AREA

NTS 104N/11W, 12E
M.A. BLOODGOOD, C.J. REES,
AND D.V. LEFEBURE

SCALE 1:50 000



LOCATION OF THE MAP AREA



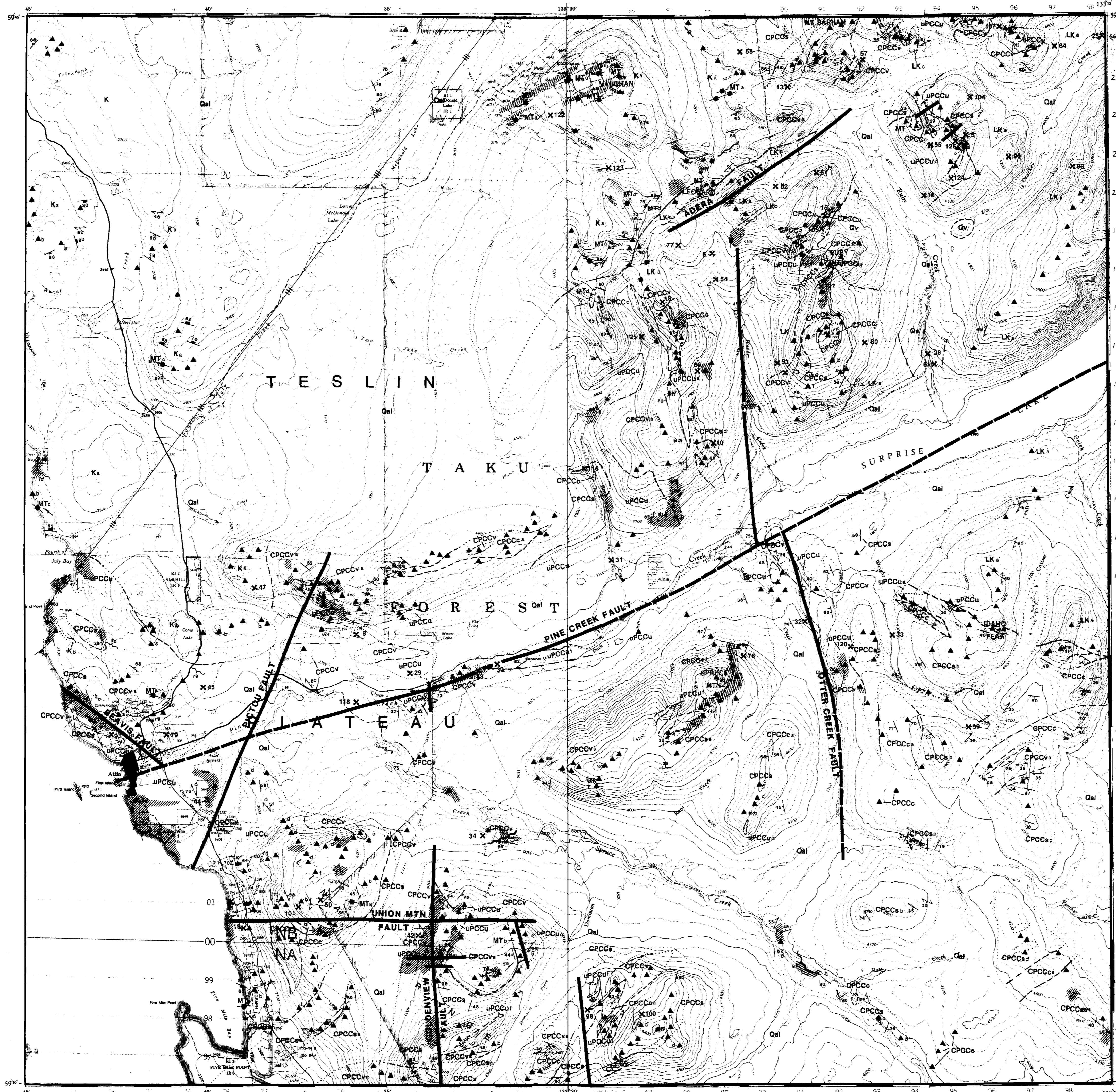
MINFILE MINERAL OCCURRENCES

Minfile Number	Name	Minfile Number	Name	Minfile Number	Name
005	Purple Rose	042	Golden View	080	Gold 218A
006	Black Diamond	043	Yellow Jacket	084	Fisher
007	Blaevis	044	Picou (L5643)	090	Plato 2
008	Imperial	045	Relief	091	Gold Star
009	Lakeview	046	Anacosta	093	WMC
010	White Star	047	Eagle	098	Shuksan
011	Atlin Ruffner	050	Monarch Mountain	099	Eagle Creek
013	Mount Barham	051	Hobo 1	100	GV
015	Thor	052	Adanac	101	Anna
016	Pereye Tungsten	053	South	105	Ruby Mountain
018	Birch Creek-Tungsten	054	North	106	Plato 1
019	Atken Gold	055	Pub	107	Utopia
025	Cracker Creek	057	Dam	116	Cabin Silver
027	Boulder Creek	058	Volcanic Creek Moly	118	Utopia
028	Ruby Creek	061	RU	121	O-1
029	Willow Creek	064	Pit	122	Ruff
030	Pine Creek	069	Silver Diamond	123	Omega
031	Birch Creek	073	Surbeam	124	Pereye Asbestos
032	Otter Creek	076	Surprise	125	Little Edna
033	Wright Creek	077	RU Silver	126	Atlin Magnetite
034	Spruce Creek	079	Atlin	127	Ruby Mountain

Reference: Minfile Map 104N, Atlin (1:250 000), B.C.M.E.M.P.R., December 1988

ADDITIONAL SOURCES

- Aitken, J.D. (1959): Atlin Map Area, British Columbia, 104N. Geological Survey of Canada, Memoir 307, 89 pages, accompanied by Map 1062A.
- Dandy, L. (1988): Geochemical, geophysical, trenching, rotary and diamond drilling report on the Lakeview Property, B.C. Ministry of Energy, Mines and Petroleum Resources, Assessment Report 17440.
- Gonzales, R.A. (1984): Geological and geochemical assessment report on the "O" Claims, B.C. Ministry of Energy, Mines and Petroleum Resources, Assessment Report 12622.
- Gonzales, R.A. (1984): Geological and geochemical assessment report on the "S" Claims, B.C. Ministry of Energy, Mines and Petroleum Resources, Assessment Report 13774.
- Mclvor, D. (1987): Summary Report: Reconnaissance geological mapping and lithochemical sampling on the "East Group" of claims (YJ1, YJ2, YJ3, Jack 22, Jack 24), Surprise Lake Property, B.C. Ministry of Energy, Mines and Petroleum Resources, Assessment Report 16529.
- Mclvor, D. and Bozek, J. (1988): Homestake Mineral Development Company, In-house Map.
- Troup, A.G. and Wong, C. (1983): Geochemical, geological and geophysical report on the Snap, Crackle, S and O Claims, B.C. Ministry of Energy, Mines and Petroleum Resources, Assessment Report 12283.
- Troup, A.G. and Wong, C. (1984): Diamond drilling, geochemical, geological and geophysical report on the Shuksan Property, B.C. Ministry of Energy, Mines and Petroleum Resources, Assessment Report 13410.



LEGEND

LAYERED ROCKS

- QUATERNARY**
- Qal UNCONSOLIDATED GLACIAL TILL AND ALLUVIUM
 - Qv OLIVINE BASALT LAVA FLOWS, SCORIA AND TEPHRA
- UPPER PALEOZOIC**
- CACHE CREEK GROUP**
- ULTRAMAFIC ROCKS**
- UPCCu PERIDOTITE
 - QUARTZ
 - SERPENTINITE
 - MONSBY (PYROXENE) WEATHERING PERIDOTITE
 - GABBRO
 - CARBONATE OR CARBONATE-SILICA ALTERED SERPENTINITE
 - BLACK, GREASY-TEXTURED SERPENTINITE
- MAFIC VOLCANIC ROCKS**
- CPCCv MOTTLED, FLOW BANDED FRAGMENTAL ROCKS
 - VOLCANIC CONGLOMERATE
 - VOLCANICS INTERBEDDED WITH IMPURE CHERTS OR SEDIMENTS
- CARBONATE ROCKS**
- CPCCc MASSIVE GREY LIMESTONE
 - CHERTY LIMESTONE
 - LIMESTONE WITH CALC-SILICATE BEDS AND LENSES
 - LIMESTONE BRECCIA OR CONGLOMERATE
- CHERT AND SILICLASTIC META-SEDIMENTARY ROCKS**
- CPCCs BEDDED CHERT
 - CHERT INTERBEDDED WITH FINE CLASTIC SEDIMENTS
 - ARGILLACEOUS SEDIMENTS WITH MINOR SILTSTONE AND CHERT
 - SILICEOUS AND PELTIC ARGILLITES WITH MINOR CHERT
 - PALE ORANGE WEATHERING GREYWACKE
 - LIMEY CHERT OR CHERT INTERBEDDED WITH CARBONATE

INTRUSIVE ROCKS

- AGE UNCERTAIN (MESOZOIC - TERTIARY)**
- MT DYKES AND MINOR INTRUSIONS
 - MAFIC DYKE
 - DIORITE
 - HORNBLENDE PORPHYRY
 - QUARTZ-FELDSPAR PORPHYRY
 - RYHOLITE PORPHYRY

- LATE CRETACEOUS**
- SURPRISE LAKE BATHOLITH**
- LK LEUCOCRATIC GRANITE
 - APLITE
 - QUARTZ-FELDSPAR PORPHYRY

- CRETACEOUS (?)**
- FOURTH OF JULY BATHOLITH**
- K GRANODIORITE
 - PINK K-FELDSPAR BEARING GRANITE
 - DIORITE

SYMBOLS

- Geological boundaries (defined, approximate, assumed) [Symbol]
- Geological boundary from additional sources [Symbol]
- Limit of Quaternary deposits [Symbol]
- Bedding (horizontal, inclined, vertical) [Symbol]
- Igneous flow layering (inclined, vertical) [Symbol]
- Schistosity, foliation (inclined, vertical) [Symbol]
- Joint (inclined, vertical) [Symbol]
- Dyke, vein (inclined, vertical) [Symbol]
- Axial plane of minor fold (inclined, vertical) [Symbol]
- Minor fault or shear zone attitude [Symbol]
- Fault (defined, approximate) [Symbol]
- Lineament (from air photographs) [Symbol]
- Station locality [Symbol]
- Minfile mineral occurrence and number [Symbol]
- Alteration and mineralization [Symbol]

SAMPLE LOCATION MAP AND ANALYTICAL DATA

NTS 104N/11W, 12E

M.A. BLOODGOOD, C.J. REES AND D.V. LEFEBURE

SCALE 1:100 000

ASSAY RESULTS FROM THE ATLIN MAP AREA (104N-11W/12E)

Table with columns: MAP NUMBER, SAMPLE NUMBER, UTM (ZONE 8) EASTING NORTHING, Au, Ag, Cu, Pb, Zn, Co, Ni, Mo, Cr, Hg, As, Sb, ROCK TYPE. Contains assay data for samples MAB8-1 to MAB8-124.

Table with columns: MAP NUMBER, SAMPLE NUMBER, UTM (ZONE 8) EASTING NORTHING, Au, Ag, Cu, Pb, Zn, Co, Ni, Mo, Cr, Hg, As, Sb, ROCK TYPE. Contains assay data for samples MAB8-285 to MAB8-338.

Table with columns: MAP NUMBER, SAMPLE NUMBER, UTM (ZONE 8) EASTING NORTHING, Au, Ag, Cu, Pb, Zn, Co, Ni, Mo, Cr, Hg, As, Sb. Contains assay data for samples MAB8-125 to MAB8-284.

Table with columns: MAP NUMBER, SAMPLE NUMBER, UTM (ZONE 8) EASTING NORTHING, Au, Ag, Cu, Pb, Zn, Co, Ni, Mo, Cr, Hg, As, Sb. Contains assay data for samples MAB8-285 to MAB8-338.

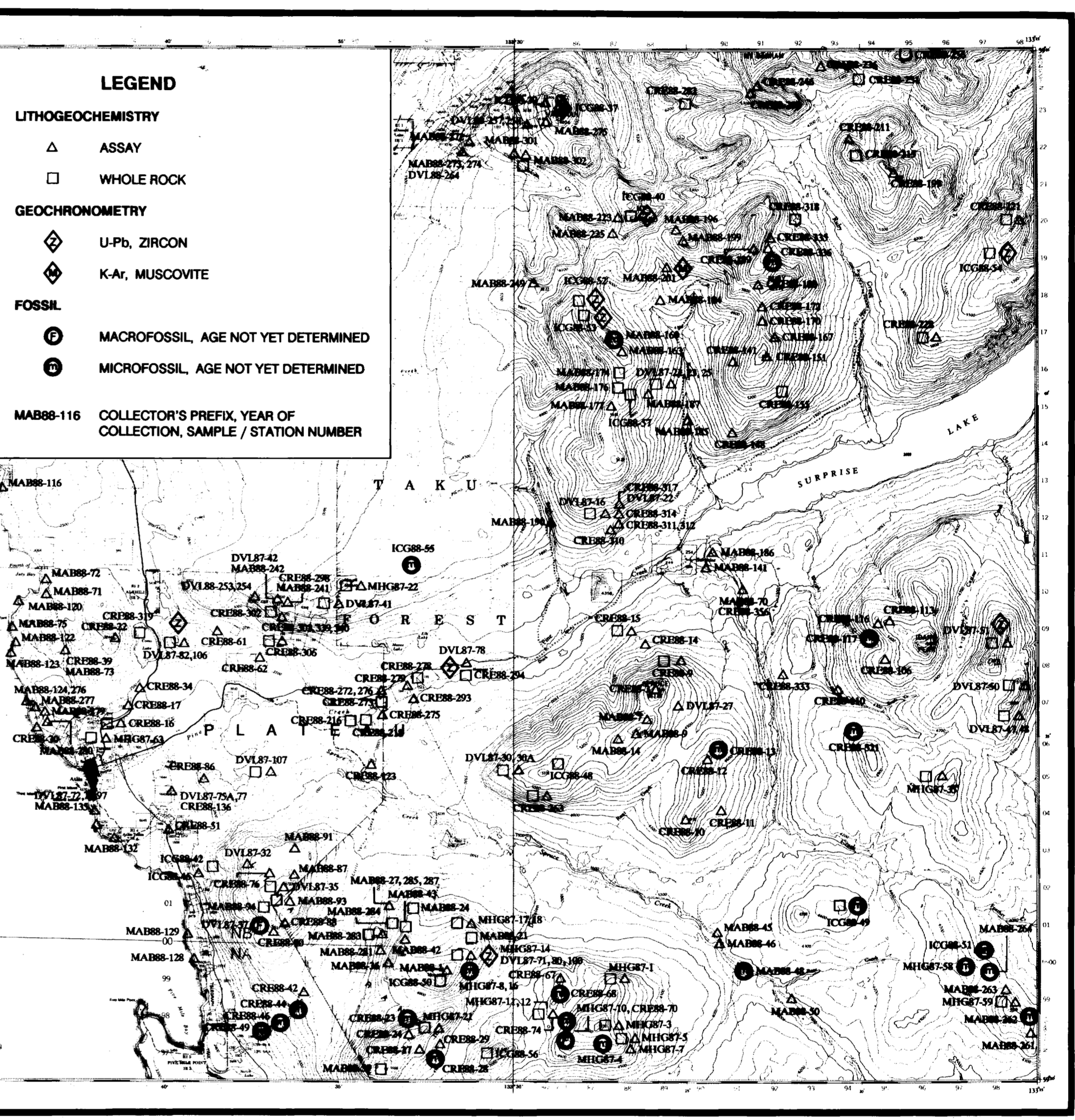
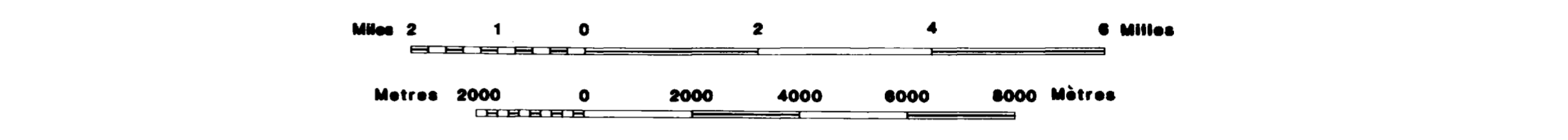


Table with columns: MAP NUMBER, SAMPLE NUMBER, UTM (ZONE 8) EASTING NORTHING, SiO2, TiO2, Al2O3, Fe2O3, MnO, MgO, CaO, Na2O, K2O, P2O5, S, CO2, FeO, LOI, SUM, ROCK TYPE. Contains whole rock analyses for samples MAB8-1 to MAB8-338.

ANALYTICAL TECHNIQUES: Whole rock analysis by ICP-AES... Calibration done by using international standard reference materials.

ANALYTICAL TECHNIQUES: Samples are pulverized to approximately minus 200 mesh using tungsten carbide equipment. Au, Ag, Cu, Pb, Zn, Co, Ni, Mo, As, Sb: Analyzed by ICP-AES... Fossil Determination: Fossils are identified by Dr. M.J. Orchard, Geological Survey of Canada.

ANALYTICAL TECHNIQUES: Samples are pulverized to approximately minus 200 mesh using tungsten carbide equipment. Au, Ag, Cu, Pb, Zn, Co, Ni, Mo, As, Sb: Analyzed by ICP-AES... Fossil Determination: Fossils are identified by Dr. M.J. Orchard, Geological Survey of Canada.