

GEOLOGY AND MINERAL OCCURRENCES OF THE PURCELL WILDERNESS CONSERVANCY, EAST HALF

NTS 82F/16; 82K/1,8
GRAEME McLAREN, GREGG STEWART
AND ROBERT LANE
SCALE 1:50 000

LEGEND

INTRUSIVE ROCKS

MESOZOIC

CRETACEOUS

- 1 WHITE CREEK BATHOLITH: GRANODIORITE, QUARTZ MONZONITE, PEGMATITE
- 2 FAY CREEK BATHOLITH: QUARTZ MONZONITE
- 3 FAYING FAY CREEK STOCK: QUARTZ MONZONITE, GRANODIORITE

STRATIFIED ROCKS

PROTEROZOIC

WINDERMERE SUPERGROUP (HADRYANAN)

- PEB HORSESHOE CREEK GROUP: FELSIC CONGLOMERATE, GRAY, QUARTZITE AND SLATE
- PURCELL SUPERGROUP (HELIKIAN)
- PEBm MOUNT AIRSON FORMATION: WHITE QUARTZ GRANITE, GREEN SLISTONE, OLIGOMYCITE QUARTZ WACKE AND SILTSTONE, MARCON ANDESITE, BUFF DOLCOMITE AND GREY LIMESTONE
- PEBa DOUTH CREEK AND AITCHENER FORMATIONS: UNDATED
- PEBd DOUTH CREEK FORMATION: GREEN SLISTONE, BROWN OLIGOMYCITE SILTSTONE, GREY ANDESITE, BUFF WEATHERING ALGA, DOLCOMITE, UNDATED AS PEBd
- PEBn UPPER FORMATION: BUFF WEATHERING OLIGOMYCITE SILTSTONE AND DOLCOMITE, GREY AND BROWN ANDESITE AND SILTSTONE, MARCON ANDESITE
- PEBc LOWER FORMATION: GREY AND GREEN QUARTZ SILTSTONE AND ANDESITE, GREEN OR GREY-WHITE QUARTZITE, MARCON SILTSTONE, QUARTZ WACKE, BROWN OLIGOMYCITE SILTSTONE, ALGAL FORMATION
- PEBm1 UPPER AND MIDDLE ONDONGS: UNDATED
- PEBm2 UPPER ONDONGS: GREY ANDESITE AND SILTSTONE, MARCON QUARTZ WACKE
- PEBm3 MIDDLE ONDONGS: MASSIVE GREY QUARTZ ANDESITE AND QUARTZ WACKE INTERBEDDED WITH THIN-BEDDED ANDESITE
- PEBm4 LOWER ONDONGS: THIN-BEDDED, BUFF WEATHERING, QUARTZ WACKE, QUARTZ GRANITE, SILTSTONE AND ANDESITE
- m MINE SILLS: GABBRO AND DIORITE

GEOLOGICAL CONTACTS:

- DEFINITE, APPROXIMATE, ASSUMED
- ADAPTED FROM RECTOR (1984, 1978)
- DEFINITE, APPROXIMATE
- ADAPTED FROM RECTOR (1984, 1978)
- THULET OR RECTOR FAULT
- NORMAL FAULT

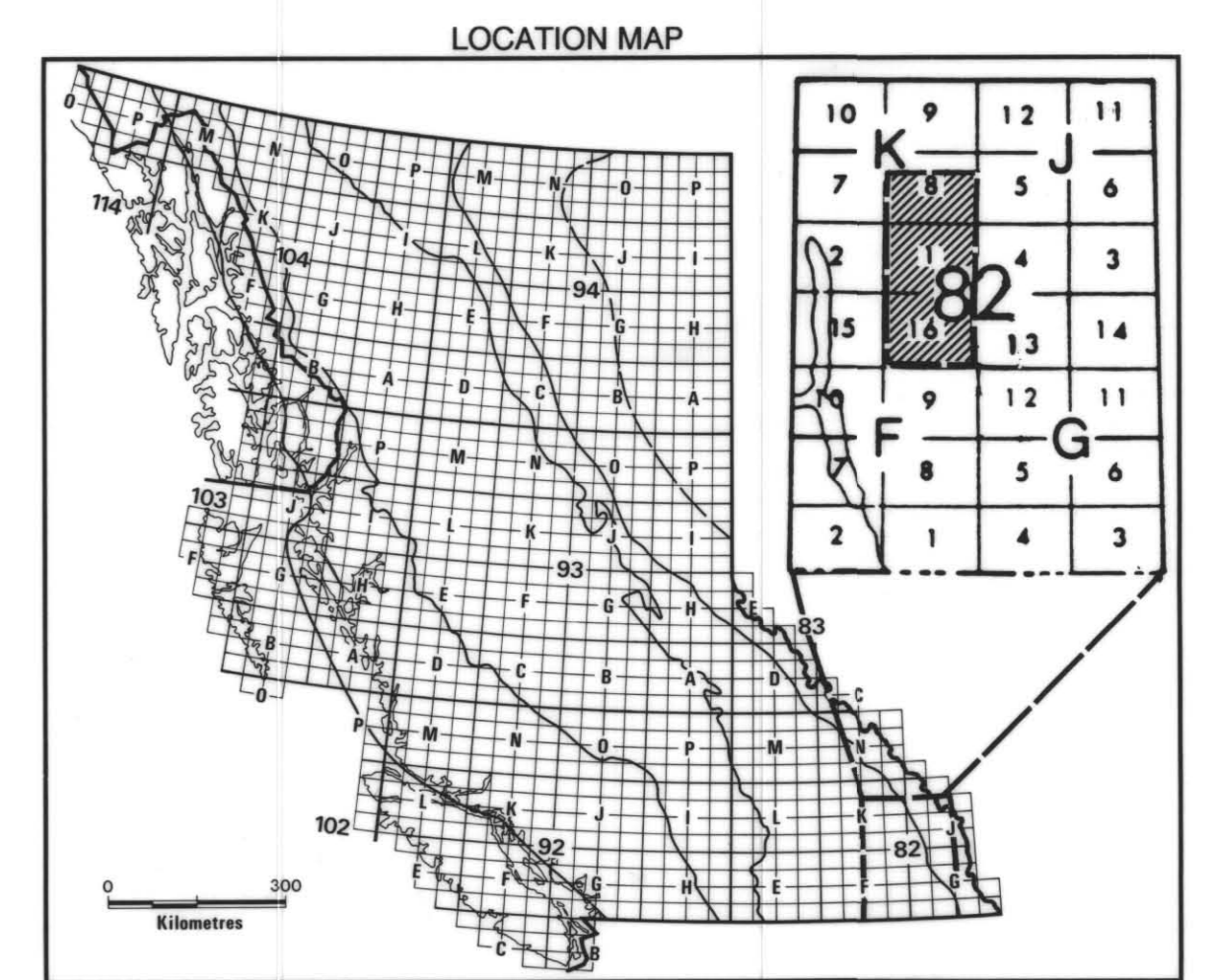
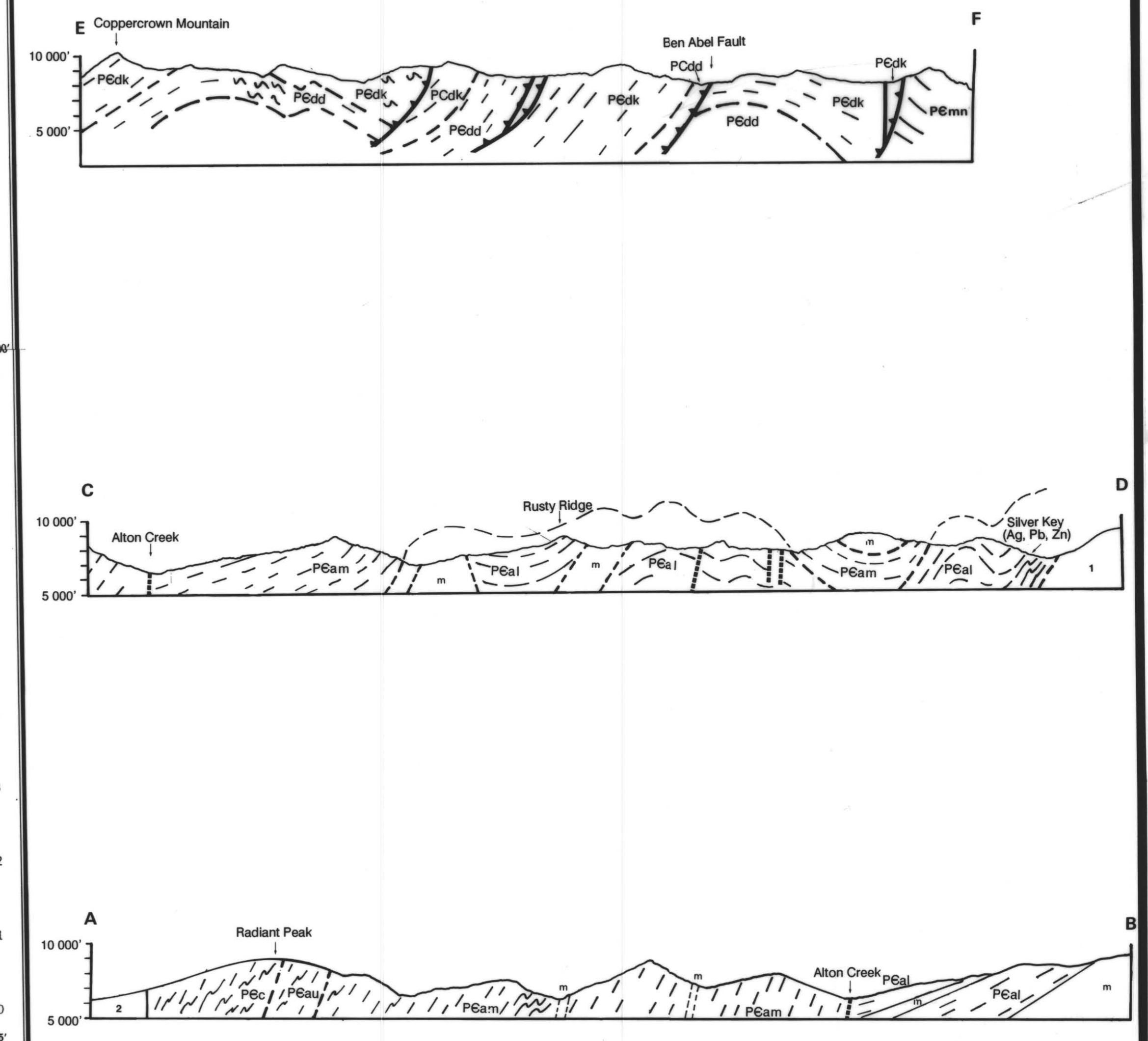
SYMBOLS

- FOLD AXES: ANTICLINE, SYNCLINE
- BEDDING: UNCLINED, UNDIFFERENTIATED, VERTICAL, SHALE, MUDSTONE, SLIP
- FOUNDATION: CLEARANCE
- MINOR FOLD AXES
- MINE, PROSPECT OR OCCURRENCE

MINERAL OCCURRENCES

| NAME | MINERAL NUMBER | COMMODITIES | TYPE |
|------------------|----------------|-----------------------|--|
| X1. Green Dale | 082NE 001 | Ag, Pb, Zn | Structurally controlled silver-lead-zinc deposit |
| 2. Vulcan | 082NE 002 | Pb, Zn | Subvolcanic massive deposit |
| 3. Inlay | 082NE 003 | W | Quartz veins associated with host intrusion |
| 4. Poco | 082NE 004 | W | Quartz veins associated with host intrusion |
| 5. Silver Key | 082NE 005 | Ag, Pb, Zn | Structurally controlled silver-lead-zinc deposit |
| 6. Dead Alpine | 082NE 006 | Pb | Structurally controlled silver-lead deposit |
| 7. Ben | 082NE 007 | Cu, Mo, W | Quartz veins associated with host intrusion |
| 8. Yarnoc | 082NE 008 | Pb, Ag, Zn | Structurally controlled silver-lead-zinc deposit |
| 9. Shady Castle | 082NE 009 | Pb, Cu, Zn | Structurally controlled silver-lead-zinc deposit |
| 10. Mineral King | 082NE 010 | Zn, Pb, Ag, Cu, Mo, W | Volcanic replacement deposit |

Diagrammatic cross-sections along lines A-B, C-D and E-F



SOURCES OF INFORMATION

- Anderson, S. J. (1978). Geology of the Tolly Creek Area, B.C. Ministry of Energy, Mines and Petroleum Resources, Preliminary Map 23.
- Barnett, S. M.H. (1980). The Geology of the Mount Foster Map Area, Purcell Mountains, Significance Basin, Columbia River, B.C. Ministry of Energy, Mines and Petroleum Resources, Preliminary Map 22.
- Carver, G. and Day, T. (1987a). Geology of the Skookumchuck Map Area (81/12), Southeastern British Columbia 82D/190, B.C. Ministry of Energy, Mines and Petroleum Resources, Open File 1987-1, pages 1-5, 143-158.
- Carver, G. and Day, T. (1987b). Geology of the Skookumchuck Map Area Southeastern British Columbia 82D/190, B.C. Ministry of Energy, Mines and Petroleum Resources, Geological Factbook 1987, Part 1, pages 1-5, 143-158.
- Flynn, J.T. (1958). Mineral Map, B.C. Ministry of Mines Annual Report, pages 74-83.
- Gunn, B. (1977). Preliminary Mineral Potential Review, Purcell Wilderness Conservancy, B.C. Ministry of Energy, Mines, and Petroleum Resources, unpublished internal report.
- Rector, J.E. (1984). Deer Creek Map area, with Special Emphasis on the White Creek Batholith, British Columbia. Geological Survey of Canada, Memoir 265, 75 pages.
- (1975). Geology of the Lakeshore Map area, East Half British Columbia. Geological Survey of Canada, Memoir 265, 129 pages.

