



Province of British Columbia
Ministry of Energy, Mines
and Petroleum Resources

Geological Survey Branch
OPEN FILE MAP 1991-4
(SHEET 1 OF 2)

**GEOLOGY OF THE BURNT RIVER
AND GWILLIM LAKE (SOUTHWEST
HALF) AREAS, NORTHEASTERN
BRITISH COLUMBIA**

NTS 93P/5; 93P/6
Geology by D.J. Hunter and J.M. Cunningham
SCALE 1:50 000

LEGEND

UPPER CRETACEOUS

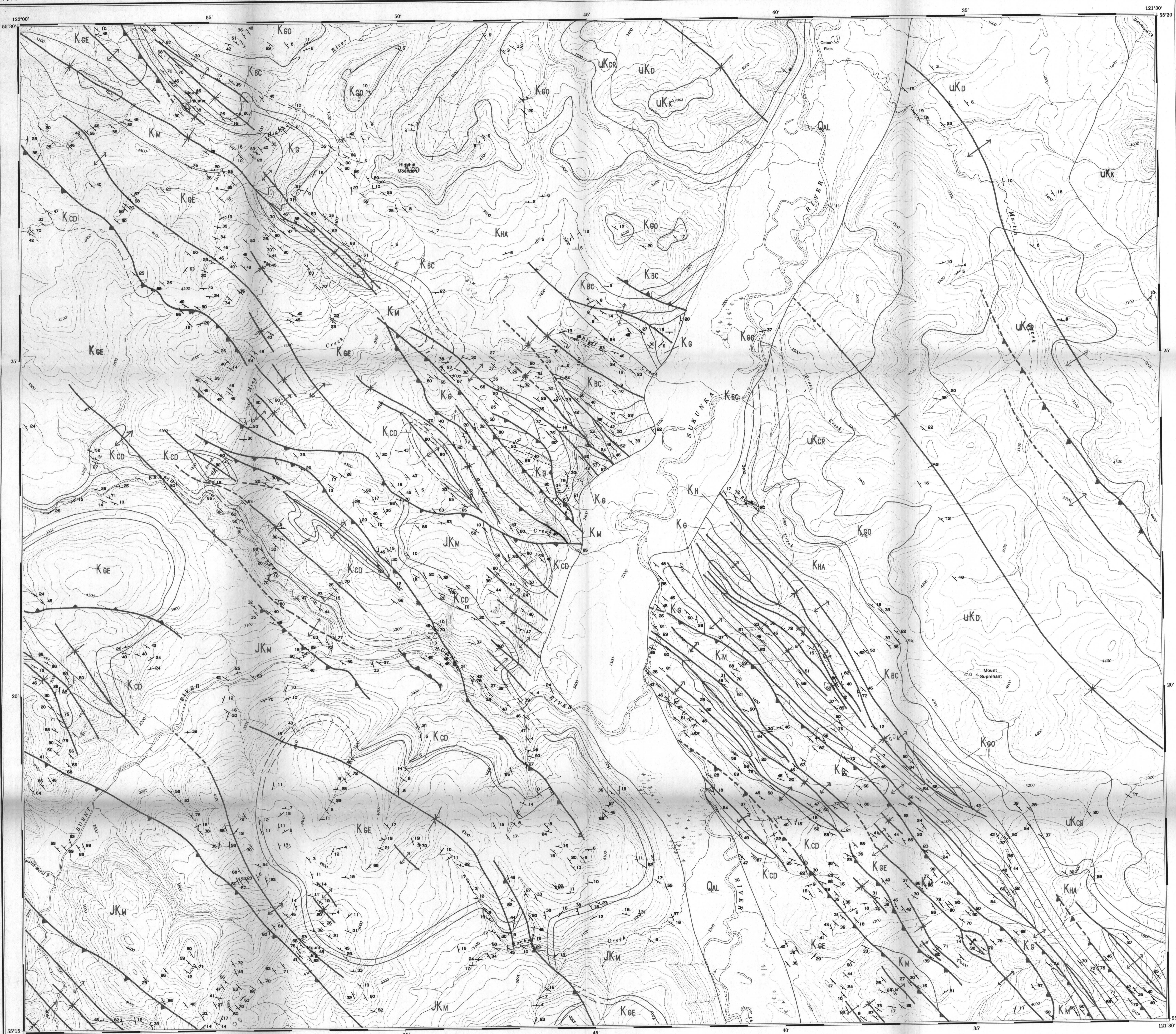
- UKW** **WAPITI FORMATION:** non-marine conglomerate, sandstone, shale and coal
- UKPC** **SMOKY GROUP**
CHUNGO MEMBER: light grey marine sandstone
- UKP** **PUSHWASKAU FORMATION:** concretionary grey marine shale
- UKB** **BADHEART FORMATION:** marine and nonmarine quartz sandstone
- UKM** **MUSKIKI FORMATION:** grey marine shale
- UKC** **CARDIUM FORMATION:** marine and nonmarine sandstone
- UKK** **KASKAPAU FORMATION:** dark grey marine shale
- UKD** **DUNVEGAN FORMATION:** marine and non-marine sandstone, shale and coal

LOWER CRETACEOUS

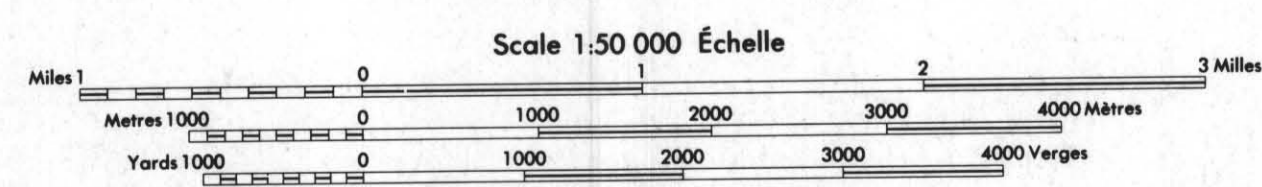
- UKCR** **FORT ST. JOHN GROUP**
CRUISER FORMATION: dark grey marine shale
- KGO** **GOODRICH FORMATION:** marine and nonmarine sandstone, shale and mudstone
- KHA** **HASLER FORMATION:** dark grey marine shale
- KBC** **BOULDER CREEK FORMATION:** massive conglomerate, sandstone, shale and coal
- KH** **HILLCROSS FORMATION:** dark grey marine shale
- KG** **GATES FORMATION:** marine and nonmarine conglomerate, sandstone, shale and coal
- KM** **MOOSEBAR FORMATION:** dark grey marine shale
- KGE** **BULLHEAD GROUP**
BETHING FORMATION: marine and nonmarine conglomerate, sandstone, shale and coal
- KCD** **CADOMIN FORMATION:** massive pebble to cobble conglomerate
- JKM** **MINNES GROUP**
UNDIVIDED: thinly bedded sandstone, shale and coal

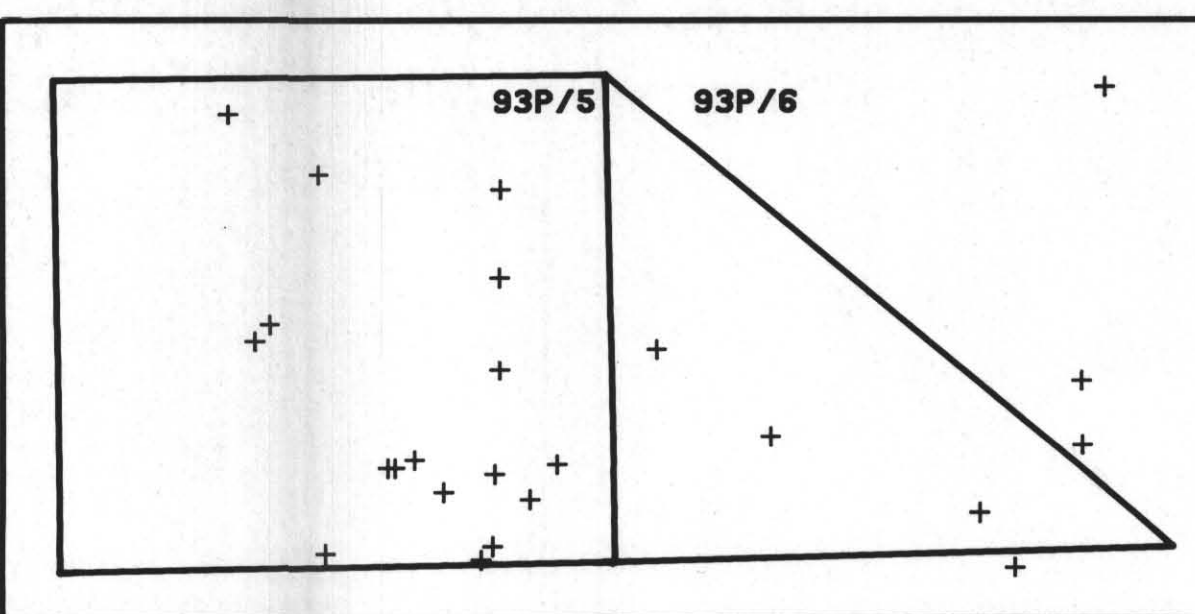
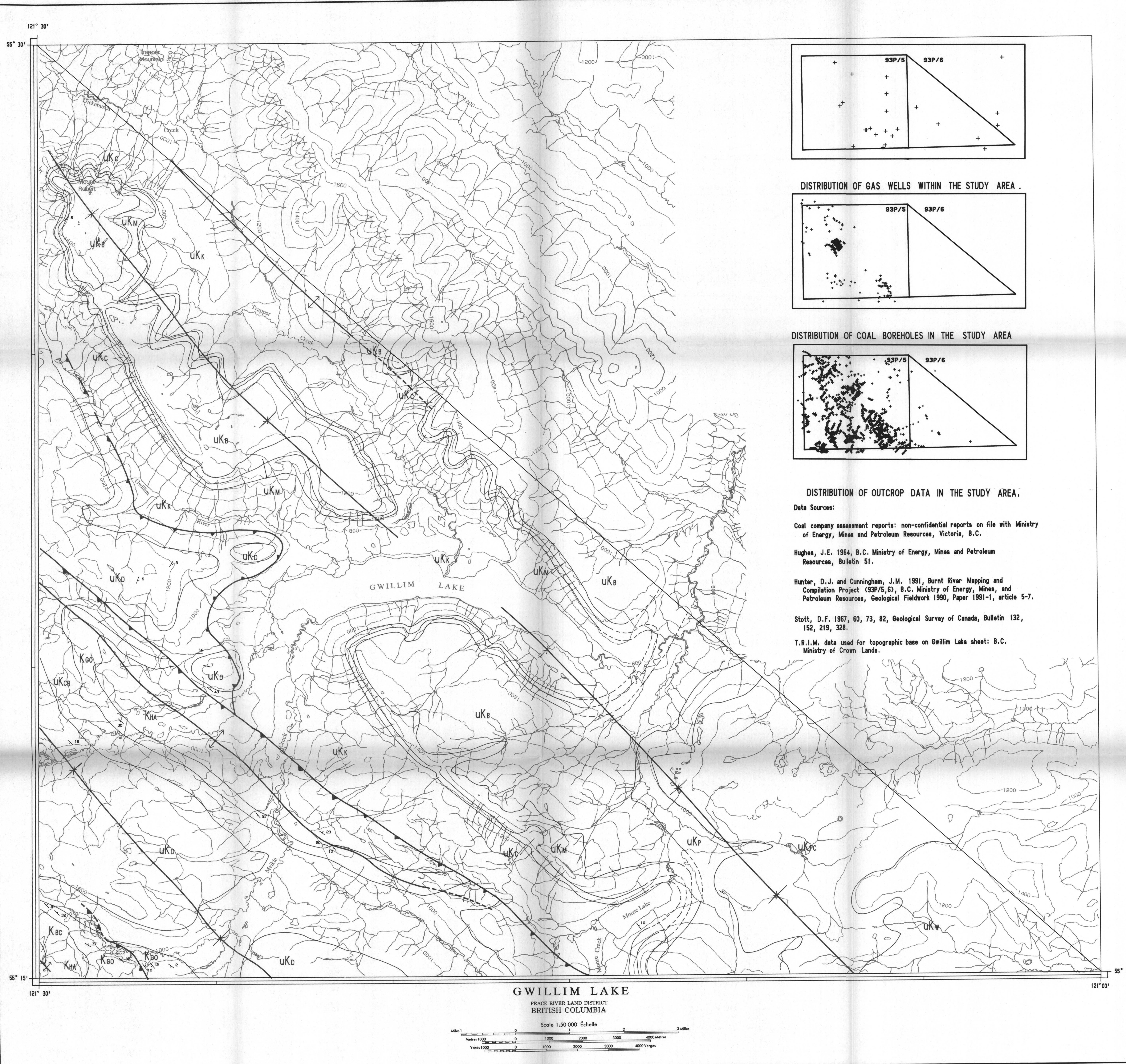
SYMBOLS

- Geologic boundary (observed, inferred)....
- Bedding orientation (inclined, overturned)..... 10° (5°)
- Thrust fault or reverse (defined, approximate)....
- Anticline, surface trace (upright, overturned)....
- Syncline, surface trace (upright, overturned)....

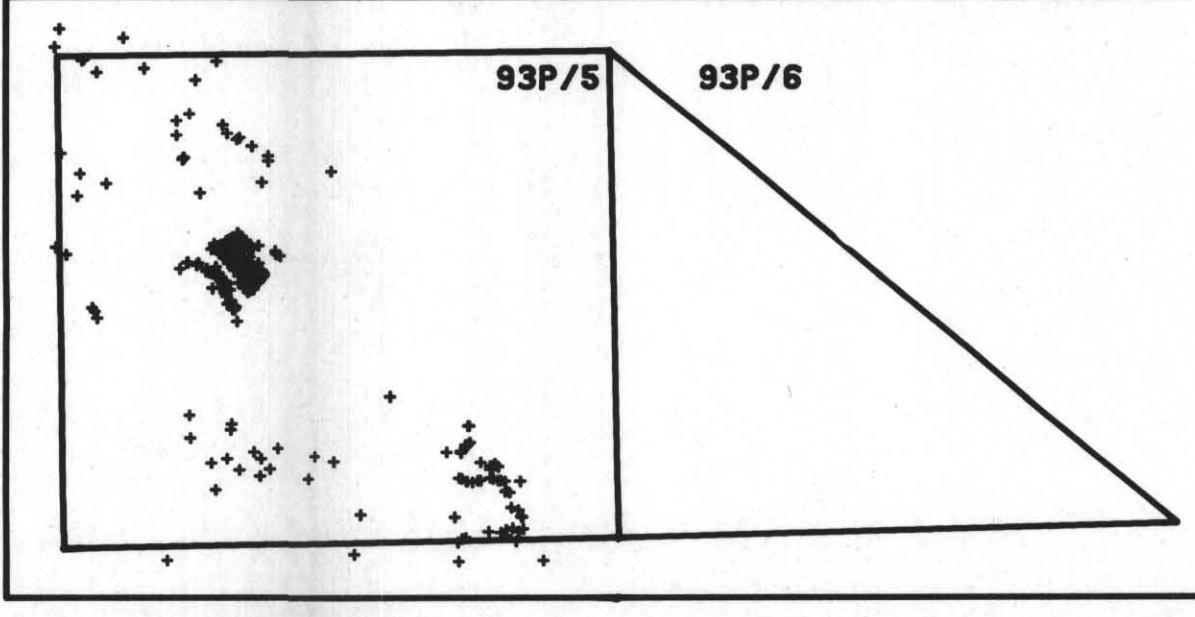


BURNT RIVER
PEACE RIVER LAND DISTRICT
BRITISH COLUMBIA

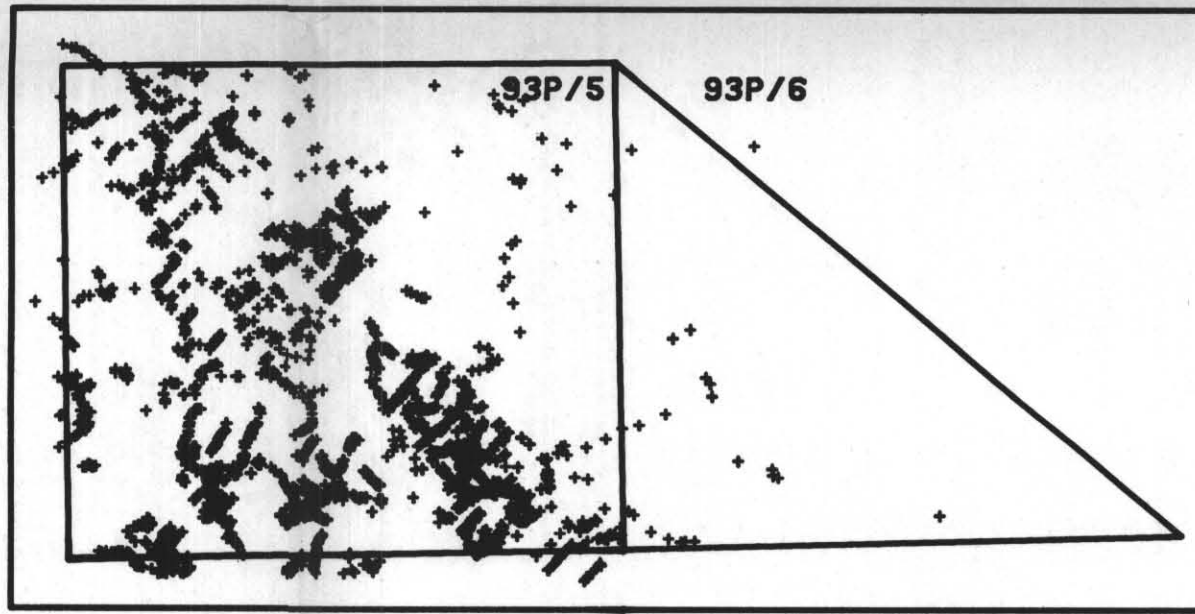




DISTRIBUTION OF GAS WELLS WITHIN THE STUDY AREA.



DISTRIBUTION OF COAL BOREHOLES IN THE STUDY AREA



DISTRIBUTION OF OUTCROP DATA IN THE STUDY AREA.

Data Sources:

Coal company assessment reports: non-confidential reports on file with Ministry of Energy, Mines and Petroleum Resources, Victoria, B.C.

Hughes, J.E. 1964, B.C. Ministry of Energy, Mines and Petroleum Resources, Bulletin 51.

Hunter, D.J. and Cunningham, J.M. 1991, Burnt River Mapping and Compilation Project (93P/5,6), B.C. Ministry of Energy, Mines, and Petroleum Resources, Geological Fieldwork 1990, Paper 1991-1, article 5-7.

Stott, D.F. 1967, 60, 73, 82, Geological Survey of Canada, Bulletin 132, 152, 219, 328.

T.R.I.M. data used for topographic base on Gwillim Lake sheet: B.C. Ministry of Crown Lands.

BC
Province of British Columbia
Ministry of Energy, Mines
and Petroleum Resources

Geological Survey Branch

OPEN FILE MAP 1991-4
(SHEET 2 OF 2)
**GEOLOGY OF THE BURNT RIVER
AND GWILLIM LAKE (SOUTHWEST
HALF) AREAS, NORTHEASTERN
BRITISH COLUMBIA**
NTS 93P/5; 93P/6
Geology by D.J. Hunter and J.M. Cunningham
SCALE 1:50 000

- LEGEND**
- UPPER CRETACEOUS**
- UKW** WAPITI FORMATION: non-marine conglomerate, sandstone, shale and coal
 - UKPC** SMOKY GROUP
 - UKPC** CHUNGO MEMBER: light grey marine sandstone
 - UKP** PUSHWASKAU FORMATION: concretionary grey marine shale
 - UKB** BALHEART FORMATION: marine and nonmarine quartz sandstone
 - UKM** MUSKOKI FORMATION: grey marine shale
 - UKC** CARDIUM FORMATION: marine and nonmarine sandstone
 - UKK** KASKAPAU FORMATION: dark grey marine shale
 - UKD** DUNVEGAN FORMATION: marine and non-marine sandstone, shale and coal
- LOWER CRETACEOUS**
- UKCR** FORT ST. JOHN GROUP
 - UKCR** CRUISER FORMATION: dark grey marine shale
 - KGO** GOODRICH FORMATION: marine and nonmarine sandstone, shale and mudstone
 - KHA** HASLER FORMATION: dark grey marine shale
 - KBC** BOULDER CREEK FORMATION: massive conglomerate, sandstone, shale and coal
 - KH** HILLCROSS FORMATION: dark grey marine shale
 - KG** GATES FORMATION: marine and nonmarine conglomerate, sandstone, shale and coal
 - KM** MOOSEBAR FORMATION: dark grey marine shale
 - BULLHEAD GROUP**
 - KGE** GETTING FORMATION: marine and nonmarine conglomerate, sandstone, shale and coal
 - KCD** CADOMIN FORMATION: massive pebble to cobble conglomerate
 - MINNES GROUP**
 - JKM** UNDIVIDED: thinly bedded sandstone, shale and coal

- SYMBOLS**
- Geologic boundary (observed, inferred)....
 - Bedding orientation (inclined, overturned)..... 15°
 - Thrust fault or reverse (defined, approximate)....
 - Anticline, surface trace (upright, overturned)....
 - Syncline, surface trace (upright, overturned)....

