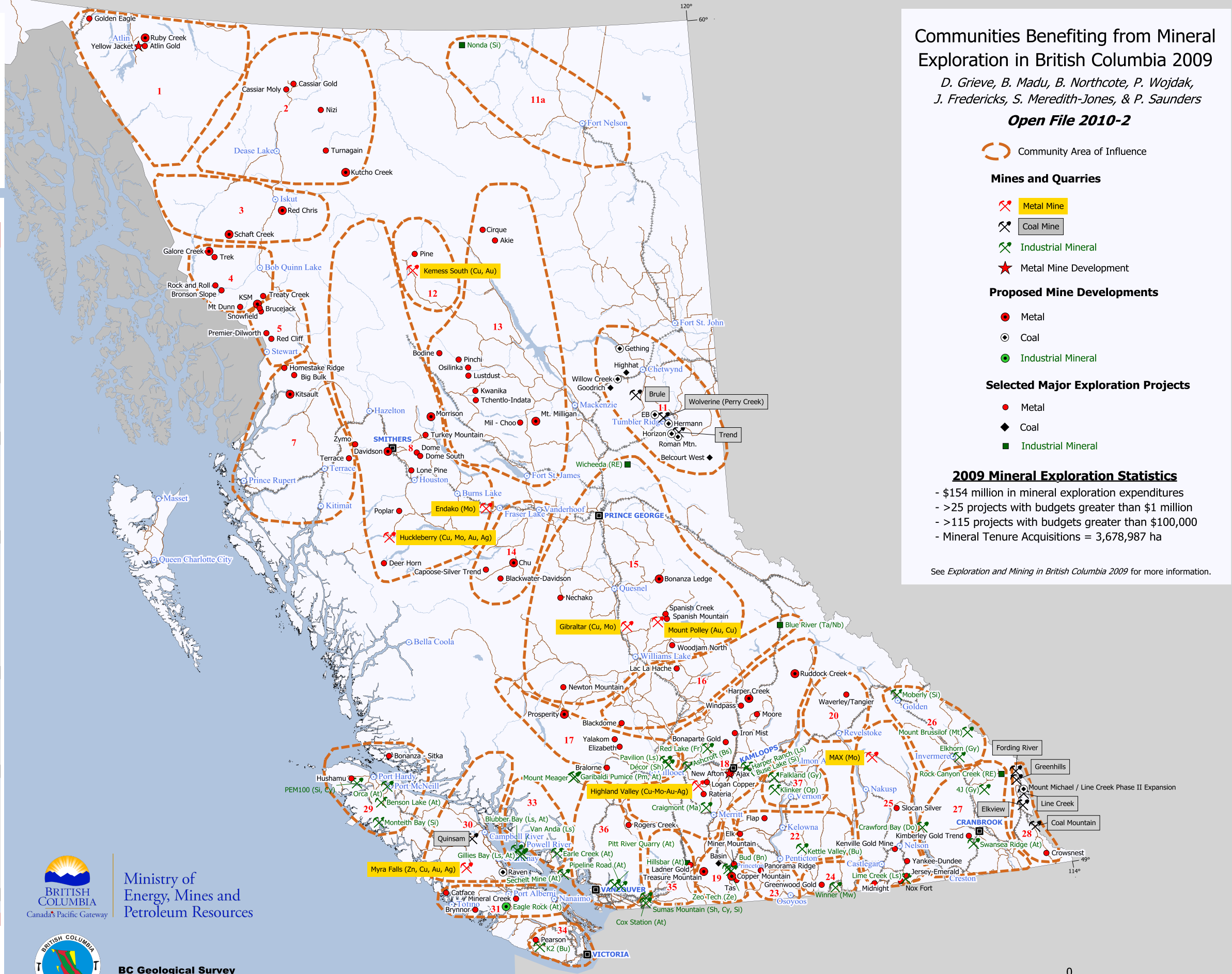


Communities Benefiting from B.C. Mineral Exploration in 2009

Community number	Number of projects	Expenditure (C\$M)	Employment (Field Person Years)
Northwest Region			
1	6	0.6	3
2	12	4.2	27
3	6	25.6	30
4	9	5.1	11
5	12	11.7	34
6	2	0.0	0
7	10	11.2	21
8	23	6.3	15
Northwest Totals	80	64.7	141
Northeast Region			
11	n/a	20.1	n/a
11a	n/a	n/a	n/a
Northeast Totals	n/a	20.1	n/a
North Central Region			
10	n/a	n/a	n/a
12	n/a	n/a	n/a
13	n/a	n/a	n/a
14	n/a	n/a	n/a
15	n/a	n/a	n/a
North Central Totals	n/a	23.0	n/a
South Central Region			
16	14	5.3	n/a
17	20	5.1	n/a
18	45	6.8	n/a
19	14	1.7	n/a
20	6	0.3	n/a
21	1	0.0	n/a
22	5	1.0	n/a
23	3	0.4	n/a
South Central Totals	108	20.5	n/a
South East Region			
24	2	1.0	2
25	44	6.9	33
26	5	0.7	3
27	8	1.4	5
28	4	4.3	10
Southeast Totals	63	14.4	53
South West Region			
29	4	0.4	2
30	7	6.2	10
31	8	2.1	6
33	2	0.0	2
34	3	1.5	7
35	5	0.9	3
36	1	0.5	3
Southwest Totals	30	11.1	31
Provincial Totals	>350	154	

n/a = not available
 * There are more than 800 additional, full time mineral exploration jobs based in the Lower Mainland and other major cities.
 **Estimates include field, office, and service industry expenditures (lab analysis, legal services, etc.) Individual total may not necessarily equal provincial totals due to rounding of numbers.
 Note: A field year equals 250 days in the field. Exploration workers can work for periods of weeks on small projects to all year on large projects. Some workers will work on several projects which can be for different companies.



Communities Benefiting from Mineral Exploration in British Columbia 2009

D. Grieve, B. Madu, B. Northcote, P. Wojdak, J. Fredericks, S. Meredith-Jones, & P. Saunders

Open File 2010-2

- Community Area of Influence
- Mines and Quarries
 - Metal Mine
 - Coal Mine
 - Industrial Mineral
 - Metal Mine Development
- Proposed Mine Developments
 - Metal
 - Coal
 - Industrial Mineral
- Selected Major Exploration Projects
 - Metal
 - Coal
 - Industrial Mineral

2009 Mineral Exploration Statistics

- \$154 million in mineral exploration expenditures
- >25 projects with budgets greater than \$1 million
- >115 projects with budgets greater than \$100,000
- Mineral Tenure Acquisitions = 3,678,987 ha

See *Exploration and Mining in British Columbia 2009* for more information.

BRITISH COLUMBIA
Canada's Pacific Gateway

Ministry of Energy, Mines and Petroleum Resources

BC Geological Survey
www.empr.gov.bc.ca/Mining/Geoscience