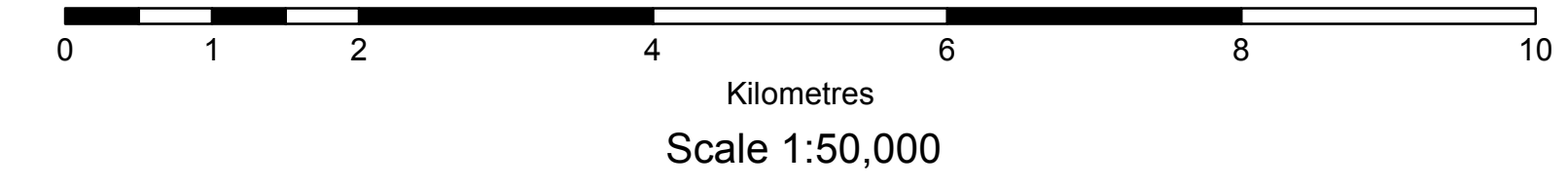


Basal till potential of the Euehinko River map area (NTS 093F/08), British Columbia

D. Sacco, T. Ferbey and W. Jackaman



Geology and data compilation by D. Sacco. Cartography by H. Arnold.

SURFICIAL GEOLOGY

- NOTE:** Where map units are composed of multiple surficial materials, a compound map unit designator is used, separating more extensive materials from less extensive (e.g., for Tb, Tu, Tv, Tb is more extensive than Tv).
- ORGANIC DEPOSITS:** Largely saturated organic materials, consisting mainly of mosses, sedges, or other hydrophytic vegetation.
- O Undifferentiated organic deposits:** Bogs, fens, and swamps; generally where shallow lakes have been infilled and in depressions along floodplains and abandoned meltwater channels.
- COLLUVIAL DEPOSITS:** Materials deposited by direct gravity-induced movement; lithologic composition dependent on source material; typically poorly sorted, massive to crudely stratified diamicton.
- Cz Landslide deposits:** Debris deposited by landslide events; form a chaotic, toe-slope topography.
- GLACIOFLUVIAL DEPOSITS:** Poorly sorted to well sorted sand and gravel transported and deposited directly by glacial meltwater.
- Gfp Glaciofluvial outwash:** Plains (0-3° surface slope) deposited in front of or adjacent to a glacier; composed of well sorted gravel deposited in fining-upward successions; may be affected by post depositional channeling; may contain subcircular kettle depressions from melting of buried ice blocks.
- Gfv Glaciofluvial veneer:** Deposits less than 2 m thick that conform to underlying topography.
- Gfb Glaciofluvial blanket:** Deposits greater than 2 m thick that mask subtle variations in substrate surface but generally conform to underlying topography.
- Gfc Ice-contact deposits:** Stratified sand and gravel with minor diamicton deposited as hillocks and hollows.
- BASAL TILL DEPOSITS:** Diamictons eroded, transported and deposited at the base of an active glacier. They are dense, massive and matrix supported. Matrix is typically composed of silt and clay with lesser amounts of sand. Clasts are often subangular to subrounded and can be faceted and striated.
- Tv Till veneer:** Deposits less than 2 m thick that conform to underlying topography; predominantly in upland regions with isolated bedrock exposures.
- Tb Till blanket:** Deposits greater than 2 m thick that mask subtle variations in substrate surface but generally conform to underlying topography; predominantly in areas of low relief.
- Ts Streamlined till:** Flutings, drumlins, and the sediment (down ice) part of crag-and-tails.
- ABLATION TILL DEPOSITS:** Diamictons deposited by melt-out, commonly from stagnant ice, of far-travelled supraglacial and englacial material. These deposits lack the density of basal till and have a high percentage of matrix sand. May be stratified and include sorted sands and gravels.
- Tu Undulating till:** Loose, sandy diamicton commonly representing thinner deposits near the margins of widespread ice stagnation or in depressions where localized ice stagnation occurred. Consist of hillocks and hollows with slopes $\leq 15^\circ$.
- Th Hummocky till:** Loose sandy diamicton commonly representing thicker deposits and widespread ice stagnation. Consist of hillocks and hollows with slopes $\geq 15^\circ$.
- BEDROCK:** Lithology varies greatly across the map area and includes sedimentary, metamorphic, volcanic, and intrusive rocks of Permian to Quaternary age. Outcrop is generally limited to areas of high relief.
- R Undifferentiated bedrock:** High-angle slopes in upland areas or in incised meltwater channels; may be susceptible to rock fall; hummocky, or undulating expressions are the result of glacial or meltwater erosion, or preferential erosion due to structural weaknesses; streamlined bedrock is the result of glacial erosion.
- TILL SAMPLES** (Labeled with sample number)
- Matrix geochemistry (Sacco et al., 2014)
 - Matrix geochemistry and mineralogy (Sacco et al., 2014)
 - Matrix geochemistry (Plouffe et al., 2001)
- FIELD STATIONS**
- (Sacco et al., 2014)
- ICE-FLOW INDICATORS** (Ferbey et al., 2013)
- Unidirectional indicators**
- Crag-and-tail
 - Drumlin
 - Striation
- Bidirectional indicators**
- Drumloid or fluting
 - Striation or groove
- Provincial Parks
 Roads

BASAL TILL POTENTIAL

- High**
- 1: Only thick basal till (Tb or Ts), may contain lesser amounts of thin basal till (e.g., Tb, Tv).
 - 2: Only thin basal till (Tv); may contain lesser amounts of thick basal till (e.g., Tu, Tb).
 - 3: Basal till with lesser amounts of another surficial material, excluding ablation till (e.g., Tb, Cb, Tv, R).
- Moderate**
- 4: Basal till with lesser amounts of ablation till (Tb, Tu).
 - 5: Basal till with lesser amounts of basal till (Tu, Tb).
- Low**
- 6: Another surficial material with lesser amounts of basal till (e.g., Cb, Tb).
- Poor**
- 7: Only ablation till at surface (Th or Tu), or ablation till and another surficial material, excluding basal till (e.g., Th, Gf, Gfb, Tu).
- None**
- Surficial material other than till.

	063G13	BCOS OF 2014-15 GBC 2014-06-10
	063G12	BCOS OF 2014-14 GBC 2014-06-09
	063G05	BCOS OF 2014-12 GBC 2014-06-07
	063F08	BCOS OF 2014-13 GBC 2014-06-08
	063G04	BCOS OF 2014-11 GBC 2014-06-06
	063F01	BCOS OF 2014-10 GBC 2014-06-05
	063C16	BCOS OF 2014-09 GBC 2014-06-04
	063C09	BCOS OF 2014-08 GBC 2014-06-03
	063B13	BCOS OF 2014-07 GBC 2014-06-02
	063B12	BCOS OF 2014-06-01 GBC 2014-06-01

Recommended citation:
 Sacco, D., Ferbey, T., and Jackaman, W., 2014. Basal till potential of the Euehinko River map area (NTS 093F/08), British Columbia. British Columbia Ministry of Energy and Mines, British Columbia Geological Survey Open File 2014-13, Geoscience BC Map 2014-06-08, scale 1:50,000.

DESCRIPTIVE NOTES

The Euehinko River map area (NTS 093F/08) is in flat to gently rolling country of the Nechako Plateau, a subdivision of the Interior Plateau physiographic region. Mainly drift covered and with sparse outcrop (Holland, 1976), the area remains underexplored despite being underlain by the Stikine terrane island-arc assemblage, which has high potential for mineralization such as calc-alkalic Cu-Mo-Au and alkaline Cu-Au porphyries (Logan, 2013).

The surficial geology of the Euehinko River map area was included in mapping by Plouffe and Leveson (2001) and Plouffe et al. (2004), concurrent with a till geochemical survey to assess mineral potential (Plouffe and Williams, 1998; Plouffe et al., 2001). This work was part of a larger project (Struk and MacIntyre, 2001) to better understand the tectonic context of central British Columbia and evaluate drift prospecting in a region with a complex ice-flow history (Leveson, 2001a). Current work in the Euehinko River map area is part of Geoscience BC's Targeting Resources for Exploration and Knowledge (TREK) project. Initiated in 2013, this project applies modern geochemical and geophysical methods to build on previous studies (Clifford and Hart, 2014; Sacco et al., 2014).

The basal till potential map presented here is one of a series of 10 maps (see inset map) that were completed for the planning and implementation phases of the TREK geochemical program. Samples shown on these maps were collected for till matrix geochemical and mineralogical analysis; results will be released in future publications.

Surficial sediment geochemical and mineralogical anomalies can be used to locate buried bedrock mineralization. Sediments with a relatively simple transport and depositional history, such as basal tills, are better suited for mineral exploration. Basal till is ideal for assessing mineral potential because: 1) it is a common sediment in glaciated terrain; 2) it can be considered a first derivative of bedrock (Shilts, 1993) and therefore has a similar geochemical signature to its bedrock source; 3) its transport history can be determined by local ice-flow reconstructions; and 4) it produces a geochemical signature that is areally more extensive than the bedrock source (Leveson, 2001b). Glacial transport and deposition of basal till produces a dispersal train, elongated down ice from its parent rock (Figure 1).

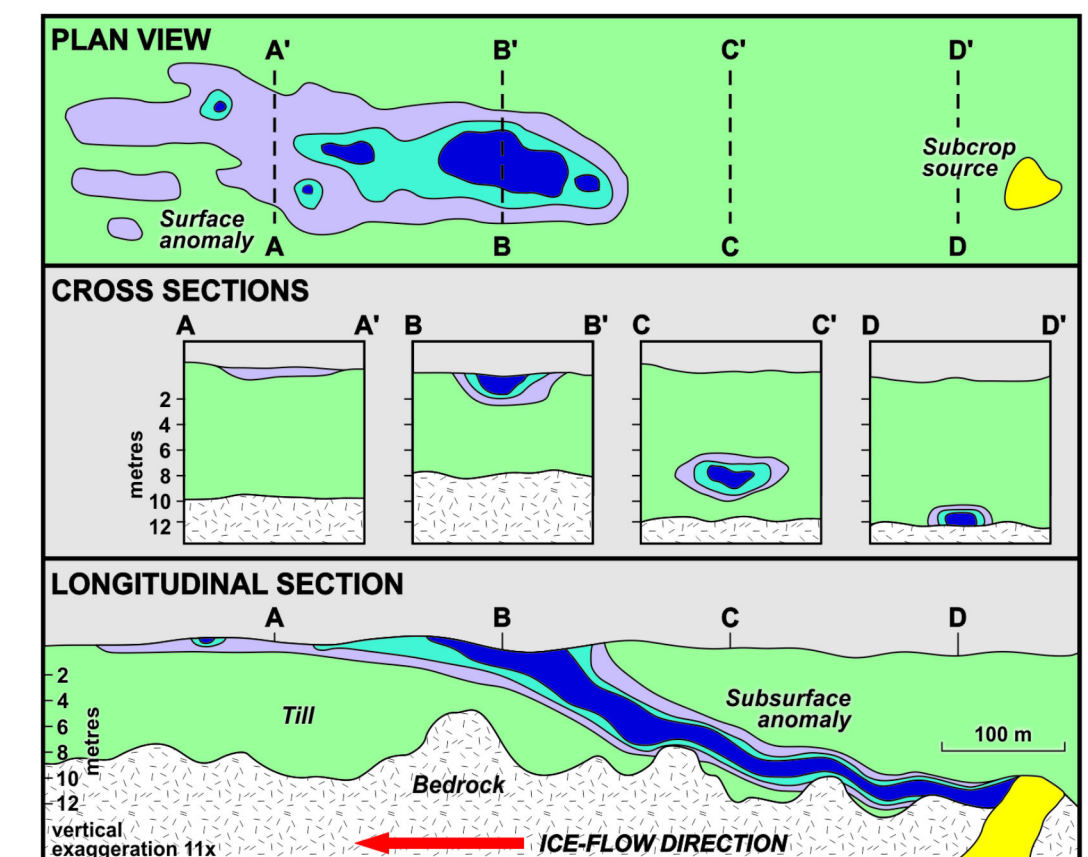


Figure 1. Model of clastic dispersal in basal till (modified from Miller, 1984). Highest values (dark blue) define the head of a dispersal train at surface, and decrease exponentially in the down-ice direction (light purple). Note how the head of a dispersal train is offset, in the down-ice direction, from its subcrop source.

of ice-flow history reconstructions. Compared to basal till, the transport distance of ablation till is longer and the depositional history more complex. Ablation till consists of material transported within and on top of a glacier. It is deposited by passive melt-out processes. Deposition of ablation till adjacent to remnant ice-blocks produces an irregular, undulating to hummocky topography. Ablation till is a less compact diamicton. It contains more gravel and has a sandier matrix (Figure 4). It can be massive to crudely stratified and may contain lenses of sorted sand and gravel. Formed by ice downwasting during deglaciation, ablation tills are typically exposed at the surface and can overlie basal tills.

Each mapped till unit is assigned a basal till potential rating. This assignment is based on the spatial and genetic association of basal till with other surficial materials and their depositional

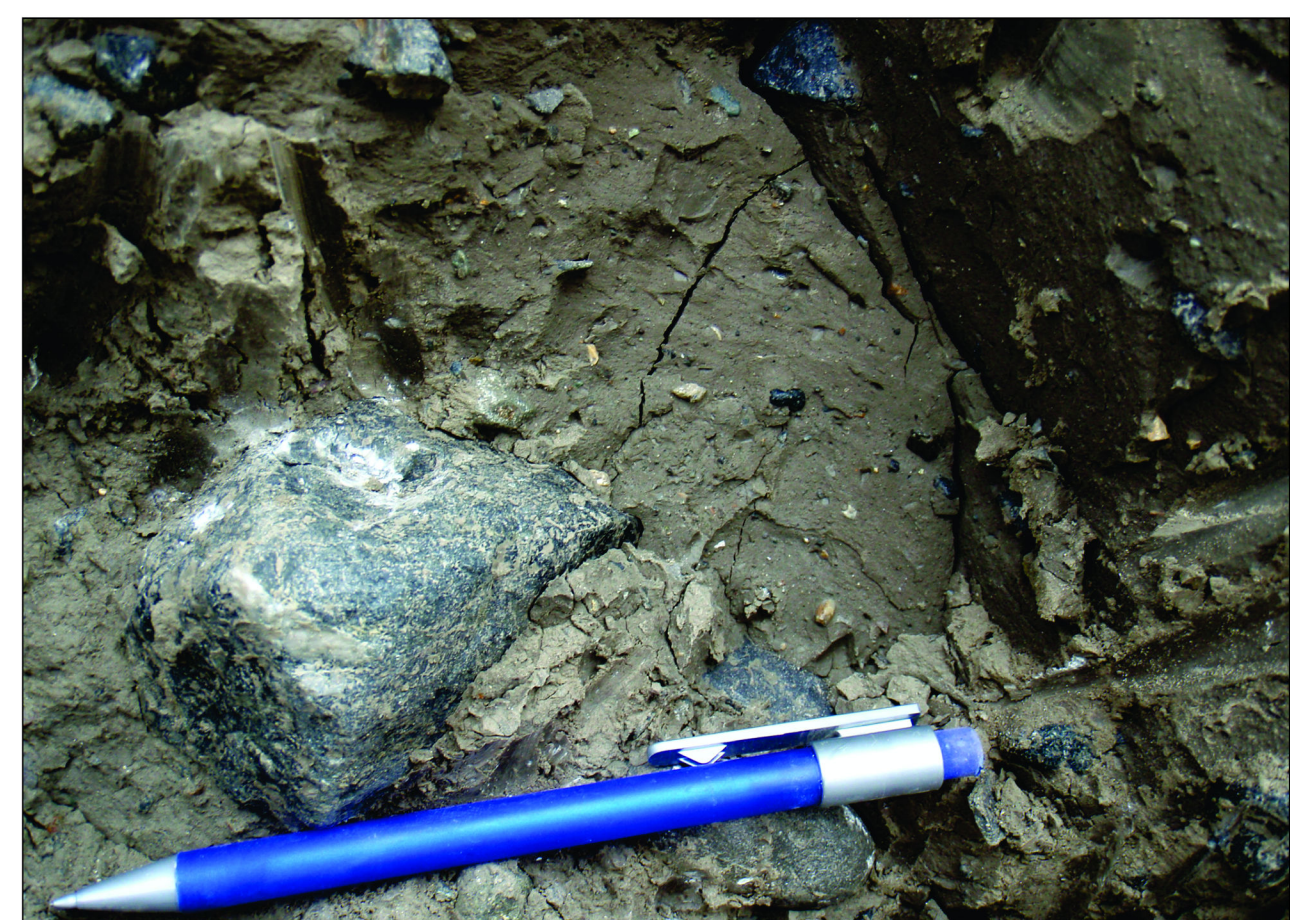


Figure 2. Basal till in vertical exposure. Note blocky appearance. Granule and coarser-sized clasts can be seen floating in a clayey-silt matrix.

environments. For example, windows through an ablation till overlying a basal till, may be smaller than the resolution of current air photos. Basal till, as a primary or secondary surface material, is unlikely to occur at surface in areas designated as 'none'.

High potential is assigned to units containing mainly basal till. The highest potential category (1) includes till blankets (>2 m thick) and streamlined till with some till veneer (<2 m thick). In these map units, samples can be collected from most exposures. In the second category of high potential (2), basal till veneers are predominant and likely include some bedrock exposures. In these areas, sample collection may be most productive down-ice from bedrock outcrop, where till might be sufficiently thick to avoid post-depositional surface processes such



Figure 3. Ablation till exposed in road cut (65 cm pick for scale both photos). There is a higher percentage of sand and gravel, compared to typical basal till (see Figure 2), and lower density.

as depositional. High potential (3) map units are mostly basal till with lesser amounts of another surficial material (excluding ablation till). Knowledge of the surface expression of this secondary material, which is provided in the map unit label, will assist in targeting basal till.

Moderate potential is assigned to map units containing varying amounts of basal till and ablation till. These map units typically represent (4) thick basal till deposits in depressions or small valleys where ablation till has been deposited, or (5) near the margins of areally extensive ablation till map units where basal till may be found within a few metres of surface or in areas of higher elevation (i.e., where ablation till thins).

Low potential (6) is assigned to map units that are predominantly another surface material. These areas may include basal till deposits that are too small or discontinuous to resolve at the current map scale. Poor potential (7) is assigned where thick ablation till overlies basal till. These areas typically consist of hummocky ablation till and may include lesser amounts of another surficial material (e.g., ice-contact glaciofluvial deposits). These areas are still mapped as having basal till potential because exposures of sufficient depth could expose underlying basal till deposits.

ACKNOWLEDGEMENTS
 L.B. Aspler and A.S. Hickin are thanked for their review of this map.

REFERENCES
 Clifford, A., and Hart, C.J.R., 2014. Targeting Resources through Exploration and Knowledge (TREK): Geoscience BC's newest minerals project, Interior Plateau Region, central British Columbia (NTS 093B, C, F, G). In: Geoscience BC Summary of Activities 2013, Geoscience BC, Report 2014-1, pp. 13-18.

Deblonde, C., Plouffe, A., E. Boisvert, Buller, G., Davenport, P., Everett, D., Huntley, D., Inglis, E., Ken, D., Moore, A., Paradis, S.J., Parent, M., Smith, I.R., St. Onge, D., and Westra, A., 2012. Science language for an integrated Geological Survey of Canada data model for surficial geology maps, version 1.2. Geological Survey of Canada, Open File 7003, 224 p.

Ferbey, T., Arnold, H., and Hickin, A.S., 2013. Ice-flow indicator compilation, British Columbia. British Columbia Ministry of Energy and Mines, British Columbia Geological Survey Open File 2013-06, 1:1650 000 scale.

Holland, S.S., 1976. Landforms of British Columbia: a physiographic outline. British Columbia Ministry of Energy and Mines, and Petroleum Resources, British Columbia Geological Survey Bulletin 48, 138 p.

Leveson, V.M., 2001a. Quaternary geology of the Babine porphyry copper district: implications for geochemical exploration. Canadian Journal of Earth Sciences, 38, 733-749.

Leveson, V.M., 2001b. Regional till geochemical surveys in the Canadian Cordillera: sample media, methods, and anomaly evaluation. In: McClenaghan, M.B., Bobrowsky, P.T., Hall, G.E.M., and Cook, S.J. (Eds.), Drift Exploration in Glaciated Terrain, Geological Society, Special Publication 185, pp. 45-68.

Logan, J.M., 2013. Porphyry systems of central and southern BC: an overview and field trip road log. In: Logan, J.M., and Schroeter, T.G. (Eds.), Porphyry systems of central and southern BC: four of central BC porphyry deposits from Prince George to Princeton, Society of Economic Geologists, Guidebook Series 44, pp. 1-45.

Miller, J.K., 1984. Model for classic indicator trains in till. In: Prospecting in Areas of Glaciated Terrain, Institution of Mining and Metallurgy, London, pp. 69-77.

Plouffe, A., and Williams, S.P., 1998. Regional till geochemistry, gold and pathfinder elements, northern Nechako River, British Columbia. Geological Survey of Canada, Open File 3687, 1:400 000 scale.

Plouffe, A., and Leveson, V.M., 2001. Surficial geology, Teteleuk Lake, British Columbia. Geological Survey of Canada, Open File 4001, 1:100 000 scale.

Plouffe, A., Leveson, V.M., and Mate, D.J., 2001. Regional till geochemistry of the Nechako River map area (NTS 93F), British Columbia. Geological Survey of Canada, Open File 4166, 1:550 000 scale.

Plouffe, A., Leveson, V.M., and Mate, D.J., 2004. Surficial geology, Nechako River, British Columbia. Geological Survey of Canada, Map 2057A, 1:250 000 scale.

Proffoot, D.N., Bobrowsky, P.T., and Meldrum, D.G., 1995. Drift exploration potential maps derived from terrain geology maps. In: Bobrowsky, P.T., Slobick, S.J., Newell, J.M., and Matyssek, P.F. (Eds.), Drift Exploration in the Canadian Cordillera, British Columbia Ministry of Energy and Mines, British Columbia Geological Survey Paper 1995-2, pp. 23-31.

Sacco, D.A., Jackaman, W., and Ferbey, T., 2014. Targeted geochemical and mineralogical surveys in the TREK Project area, central British Columbia (parts of NTS 093B, C, F, G). In: Geoscience BC Summary of Activities 2013, Geoscience BC Report 2014-1, pp. 19-34.

Shilts, W., 1993. Geological Survey of Canada's contributions to understanding the composition of glacial sediments. Canadian Journal of Earth Sciences, 30, 333-353.

Struk, L.C., and MacIntyre, D.G., 2001. Introduction to the special issue of Canadian Journal of Earth Sciences: the Nechako NATMAP project of the central Canadian Cordillera. Canadian Journal of Earth Sciences, 38, 485-494.