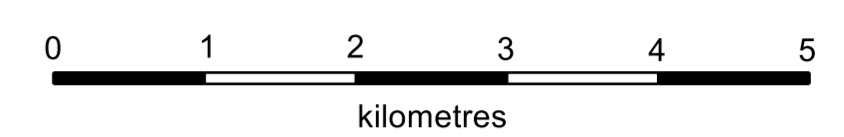


Bedrock geology, Stump Lake - Salmon River
parts of NTS 82L/05 and 92I/08

P. Scharizza

Scale 1:50,000



Legend

- Eocene**
 - Ev Andesite, dacite, basalt
- Jurassic (?)**
 - Jt Hornblende-biotite tonalite
 - Jd Hornblende-pyroxene diorite
- Early Jurassic**
 - EJgd Hornblende-biotite granodiorite and tonalite; local granite, diorite
- Late Triassic or Early Jurassic**
 - TJd Hornblende-biotite diorite and quartz diorite
- Middle Triassic to Lower Jurassic**
 - Nicola Group**
 - TJNsc Polymictic conglomerate, conglomeratic sandstone, sandstone; conglomerate typically includes mafic plutonic clasts; locally includes pyroxene-hornblende-plagioclase-phryic basalt and peperite breccia
 - uTNv Pyroxene-plagioclase-phryic basalt and basalt breccia
 - uTNsc Volcanic conglomerate and conglomeratic sandstone
 - uTNs Feldspathic sandstone, pyroxene-feldspar sandstone, siltstone, slate, volcanic conglomerate
 - muTNs Siltstone, chert, slate
 - Lower Jurassic**
 - IJs Siltstone, calcareous sandstone, sandstone, argillite, slate; local conglomerate, basalt
 - IJsc Polymictic conglomerate
 - Upper Triassic**
 - uTsl Limestone, pebbly limestone, calcarenite; local shale, chert
- Paleozoic**
 - Chaparron Group**
 - PC Sericite-chlorite-quartz schist, chlorite schist, chert, limestone, quartzite; talc-magnesite-serpentine schist

- Geologic contact (approximate, inferred).....
- Unconformity (approximate, inferred).....
- Fault (approximate, inferred).....
- Axial trace of anticline.....
- Bedding, tops known; inclined, right-way-up.....
- Bedding, tops unknown (inclined, vertical).....
- Schistosity or slaty cleavage (inclined, vertical).....
- Axis of mesoscopic fold.....
- Field station, 2016 mapping program.....
- Late Triassic conodont locality.....
- Location of detrital zircon sample showing Early Jurassic maximum depositional age.....
- MINFILE occurrence with map reference number (Table 1).....
- Road (paved, gravel or dirt).....
- Topographic contour (20 m, 100 m intervals).....
- Stream.....
- Lake.....
- Wetland.....

BC Albers projection, NAD 83
1 km UTM grids (zones 10 and 11) superimposed
Magnetic declination (2022) is 15.61° E, decreasing 0.10° per year

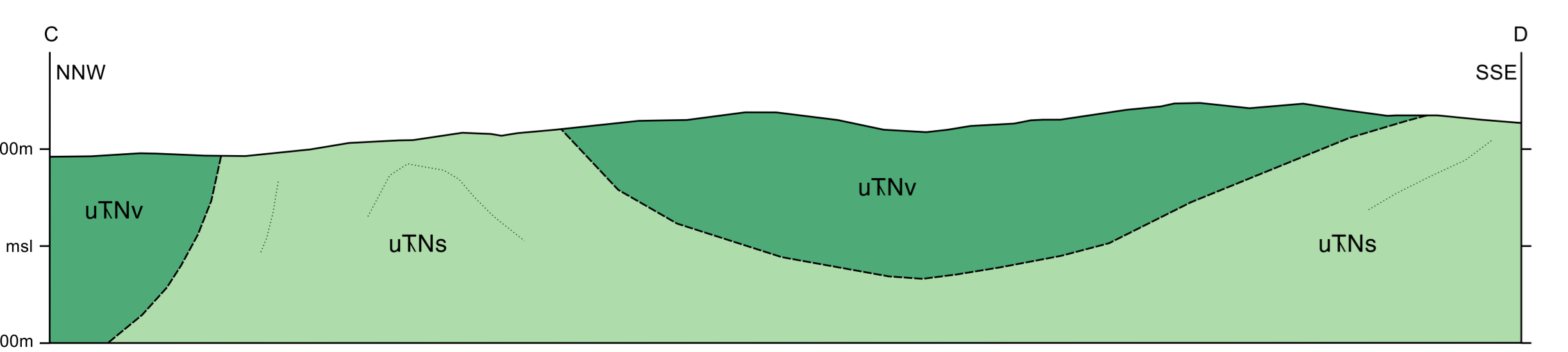
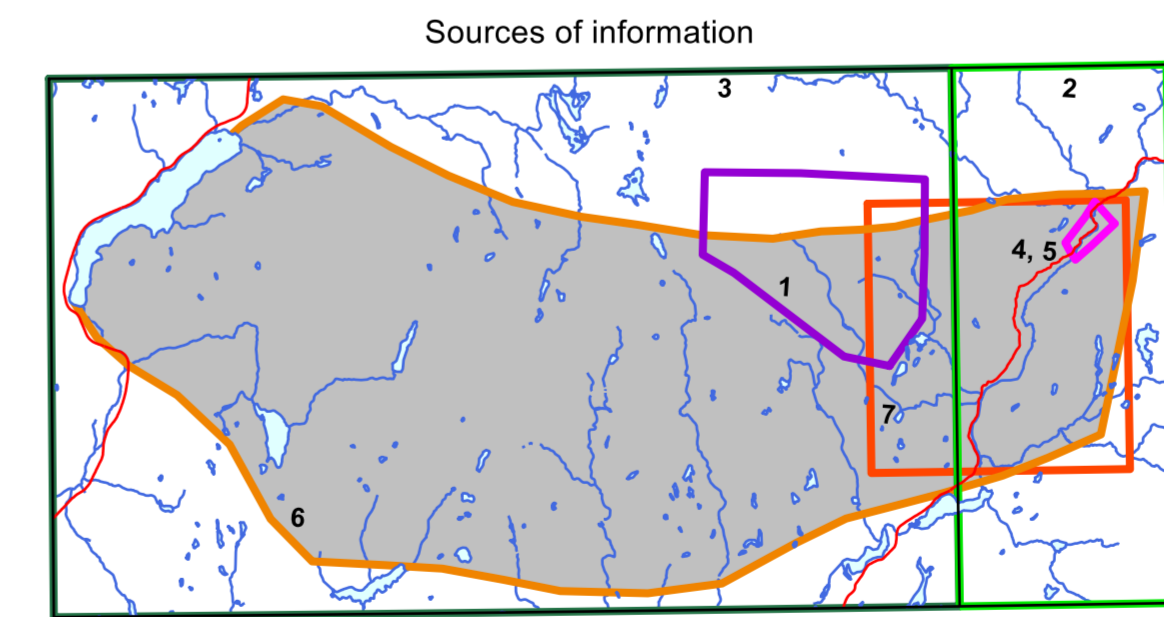
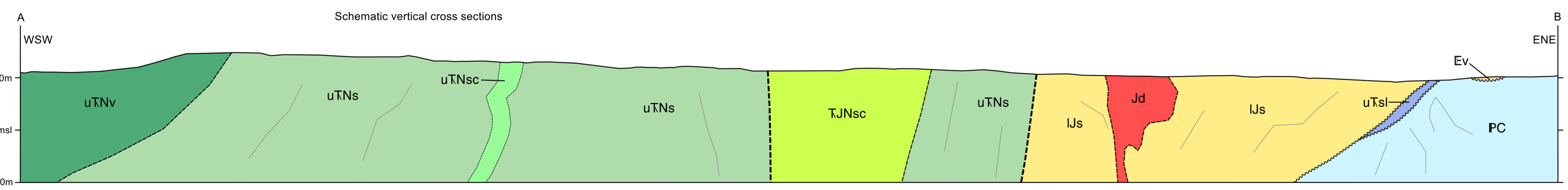


Table 1: Mineral occurrences (Stump Lake mining camp)

Map #	Name	MINFILE #	Eastings	Northing	Status
1	Enterprise	092ISE028	685804	5580520	Past Producer
2	Planet No. 1	092ISE029	685213	5579810	Showing
3	Jenny Long	092ISE031	687608	5577131	Past Producer
4	Johannesburg	092ISE032	688633	5576703	Showing
5	Tubal Cain	092ISE108	685923	5580804	Prospect
6	Joshua	092ISE109	686226	5580715	Past Producer
7	King William	092ISE110	686175	5579764	Prospect
8	Silver King No. 2	092ISE111	685623	5579541	Showing
9	Emulator	092ISE112	686407	5579773	Showing
10	Moon	092ISE113	687185	5577431	Showing
11	Raven No. 2	092ISE114	687030	5578811	Showing
12	Mary Reynolds	092ISE115	689290	5578605	Past Producer
13	Don	092ISE136	688166	5579845	Showing
14	Cop 100	092ISE158	689665	5577204	Showing
15	Trump	092ISE161	690978	5584500	Showing
16	No Surrender	092ISE175	686098	5579978	Showing
17	Maybelle Fraction	092ISE176	686190	5580273	Showing
18	Marion C Fraction	092ISE177	686188	5579220	Showing
19	IDL No. 6	092ISE184	687393	5578435	Showing
20	Lincoln	092ISE200	689310	5578604	Showing



- Clarke, J., and Boyd, G., 2015. Assessment Report on the 2014 geochemical surveying and geologic mapping at the Weyman claims. British Columbia Ministry of Energy and Mines, British Columbia Geological Survey, Assessment Report 35405.
- Daughtry, K.L., and Thompson, R.I., 2004. Geology, Westfold, British Columbia. Geological Survey of Canada, Open File 4374; scale 1:50,000.
- Monger, J.W.H., and McMillan, W.J., 1989. Geology, Ashcroft, British Columbia. Geological Survey of Canada, Map 42-1989; scale 1:250,000.
- Preto, V.A., 1984. Structural relations between the Shuswap terrane and the Cache Creek Group in southern British Columbia. M.Sc. thesis, The University of British Columbia, 87p.
- Read, P.B., and Okulitch, A.V., 1977. The Triassic unconformity in south-central British Columbia. Canadian Journal of Earth Sciences, 14, 606-638.
- Scharizza, P., 2017. Ongoing stratigraphic studies in the Nicola Group: Stump Lake - Salmon River area, south-central British Columbia. In: Geological Fieldwork 2016, British Columbia Ministry of Energy and Mines, British Columbia Geological Survey Paper 2017-1, pp. 17-33.
- Scharizza, P., Orchard, M.J., and Friedman, R.M., 2022. Conodonts and detrital zircons from Triassic and Jurassic rocks above the Salmon River unconformity, Thompson Plateau, south-central British Columbia. In: Geological Fieldwork 2021, British Columbia Ministry of Energy, Mines and Low Carbon Innovation, British Columbia Geological Survey Paper 2022-01, pp. 17-30.

Recommended citation:
Scharizza, P., 2022. Bedrock geology, Stump Lake - Salmon River (parts of NTS 82L/05 and 92I/08). British Columbia Ministry of Energy, Mines and Low Carbon Innovation, British Columbia Geological Survey Open File 2022-03; scale 1:50,000.